

Cite this: *Chem. Sci.*, 2023, 14, 3400

All publication charges for this article have been paid for by the Royal Society of Chemistry

# Insights into alloy/oxide or hydroxide interfaces in Ni–Mo-based electrocatalysts for hydrogen evolution under alkaline conditions

Min Luo,<sup>a</sup> Jietian Yang,<sup>a</sup> Xingang Li,<sup>id a</sup> Miharu Eguchi,<sup>bc</sup> Yusuke Yamauchi<sup>id bc</sup> and Zhong-Li Wang<sup>id \*a</sup>

Nickel–molybdenum (Ni–Mo) alloys are promising non-noble metal electrocatalysts for the hydrogen evolution reaction (HER) in alkaline water; however, the kinetic origins of their catalytic activities still remain under debate. In this perspective, we systematically summarize the structural characteristics of Ni–Mo-based electrocatalysts recently reported and find that highly active catalysts generally have alloy–oxide or alloy–hydroxide interface structures. Based on the two-step reaction mechanism under alkaline conditions, water dissociation to form adsorbed hydrogen and combination of adsorbed hydrogen into molecular hydrogen, we discuss in detail the relationship between the two types of interface structures obtained by different synthesis methods and their HER performance in Ni–Mo based catalysts. For the alloy–oxide interfaces, the Ni<sub>4</sub>Mo/MoO<sub>x</sub> composites produced by electrodeposition or hydrothermal combined with thermal reduction exhibit activities close to that of platinum. For only the alloy or oxide, their activities are significantly lower than that of composite structures, indicating the synergistic catalytic effect of binary components. For the alloy–hydroxide interfaces, the activity of the Ni<sub>x</sub>Mo<sub>y</sub> alloy with different Ni/Mo ratios is greatly improved by constructing heterostructures with hydroxides such as Ni(OH)<sub>2</sub> or Co(OH)<sub>2</sub>. In particular, pure alloys obtained by metallurgy must be activated to produce a layer of mixed Ni(OH)<sub>2</sub> and MoO<sub>x</sub> on the surface to achieve high activity. Therefore, the activity of Ni–Mo catalysts probably originates from the interfaces of alloy–oxide or alloy–hydroxide, in which the oxide or hydroxide promotes water dissociation and the alloy accelerates hydrogen combination. These new understandings will provide valuable guidance for the further exploration of advanced HER electrocatalysts.

Received 15th November 2022  
Accepted 8th January 2023

DOI: 10.1039/d2sc06298d

rsc.li/chemical-science

## 1. Introduction

The increasing energy crisis induced by fast depletion of limited fossil fuels and environmental impacts have resulted in an urgent demand for clean and renewable energy resources. Owing to its high energy density and environmentally friendly characteristics, molecular hydrogen is an attractive energy carrier to meet future global energy demands.<sup>1–4</sup> Electrochemical water splitting that converts water into hydrogen and oxygen is a promising way for sustainable production of hydrogen, especially when it is driven by green electricity from sunlight, wind, hydropower, *etc.* Alkaline water electrolysis is one of the most mature and widely used electrolysis technologies for hydrogen

production due to its low-cost components and high durability. However, the sluggish reaction kinetics of the hydrogen evolution reaction (HER) in alkaline media lead to high overpotentials for practical water splitting. To promote the HER kinetics, efficient electrocatalysts are necessary to decrease the reaction overpotentials, thus making the water splitting more energy-saving. As a benchmark HER electrocatalyst, precious metal platinum (Pt)-based materials are almost still the catalysts with the highest intrinsic activity.<sup>5</sup> Unfortunately, the scarcity and high cost of Pt seriously impede its large-scale applications in the electrocatalytic HER.

To develop efficient and earth-abundant alternatives to Pt as HER electrocatalysts, great efforts have been made to explore transition metal-based electrocatalysts over the past decade, including metal oxides,<sup>6–8</sup> metal alloys,<sup>9–12</sup> traditional metal phosphides,<sup>13–17</sup> carbides,<sup>18,19</sup> and sulfides.<sup>20–22</sup> Among them, nickel-based materials are the most used electrocatalysts in alkaline electrolyzers, and especially, nickel–molybdenum (Ni–Mo) bimetallic catalysts exhibit the best HER catalytic performance among all the non-noble metal-based materials.<sup>23–42</sup> Typically, Ni<sub>4</sub>Mo alloy nanoparticles supported by MoO<sub>2</sub> cuboids on nickel foam exhibited zero onset overpotential, an

<sup>a</sup>Tianjin Key Laboratory of Applied Catalysis Science and Technology, School of Chemical Engineering and Technology, Tianjin University, Tianjin 300072, China. E-mail: wang.zhongli@tju.edu.cn

<sup>b</sup>JST-ERATO Yamauchi Materials Space-Tectonics Project and International Center for Materials Nanoarchitectonics (WPI-MANA), National Institute for Materials Science (NIMS), 1-1 Namiki, Tsukuba, Ibaraki 305-0044, Japan

<sup>c</sup>School of Chemical Engineering and Australian Institute for Bioengineering and Nanotechnology (AIBN), The University of Queensland, Brisbane, QLD 4072, Australia



overpotential of 15 mV at 10 mA cm<sup>-2</sup> and a low Tafel slope of 30 mV dec<sup>-1</sup> in 1 M KOH.<sup>23</sup> Such performance is comparable to that of Pt and superior to those of state-of-the-art Pt-free electrocatalysts. However, the detailed mechanism for the enhanced activity of Ni–Mo catalysts remains controversial, and several mechanisms have been proposed to account for the high HER activity of Ni–Mo-based electrocatalysts. One prevailing explanation is related to the electronic synergy of Ni and Mo in the alloy, leading to an appropriate hydrogen adsorption energy of the catalyst surface.<sup>43,44</sup> The second proposed mechanism is that Ni activates water dissociation to produce adsorbed hydrogen species which then transfer to the Mo surface *via* hydrogen spillover to produce molecular hydrogen, called the hydrogen-spillover effect.<sup>45</sup> And the third explanation is that the intrinsic activity of the Ni–Mo alloy originates from Ni and surface area enhancement through Mo dissolution improves the current density.<sup>46</sup> These three mechanisms focus on the role of metallic Ni as the primary active site. However, the recent results demonstrated that a Mo oxo species (most likely Mo<sup>3+</sup>) supported on metallic Ni or the Ni<sub>x</sub>Mo<sub>y</sub> alloy was responsible for the high activity of a Ni–Mo catalyst for water reduction to form hydrogen.<sup>47</sup> It can be clearly seen that these mechanisms are inconsistent, indicating the complexity of the Ni–Mo catalytic system. Therefore, it is necessary to further explore the factors that affect the activity of the Ni–Mo catalyst and deeply understand the nature of high activity.

As shown in Fig. 1, the HER kinetics in alkaline solutions involves two steps: water dissociation to form adsorbed hydrogen (Volmer step) and combination of adsorbed hydrogen into molecular hydrogen (Heyrovsky or Tafel step).<sup>48,49</sup> Compared to the HER under acidic conditions, where protons are directly used as reactants, the reactants in an alkaline solution switch from protons to water as the hydrogen source, and an additional water dissociation step needs to occur to release protons, which

significantly decreases the reaction rate of the HER. As a result, even for Pt-based catalysts, the catalytic performance and kinetics are hindered by the slow rate of water cleavage in the Volmer step. Due to this reason, the reaction rate on Pt is usually 2–3 orders lower in an alkali than that in an acid.<sup>50</sup> Therefore, efficient HER under alkaline conditions requires that the active sites of the catalyst simultaneously accelerate the water dissociation and hydrogen combination reactions. Interestingly, the decoration of Ni(OH)<sub>2</sub> on the Pt surfaces has been demonstrated to drastically increase the HER performance of Pt catalysts under alkaline conditions, and it is proposed that Ni(OH)<sub>2</sub> promotes the cleavage of H–OH bonds in the water dissociation step, while Pt facilitates adsorption and combination of the generated hydrogen intermediates to form H<sub>2</sub> molecules.<sup>5</sup> Pt/Ni(OH)<sub>2</sub>-based systems have not only advanced electrocatalytic performances but also provided insight into reaction mechanisms.

Inspired by the fundamental HER mechanism that occurs on Pt/Ni(OH)<sub>2</sub> interface, we systematically summarize the structural characteristics of Ni–Mo-based electrocatalysts recently reported, and find surprisingly that highly active catalysts generally have alloy–oxide or alloy–hydroxide interface structures. It is not difficult to speculate that the two components at the interface may jointly promote the two-step reaction of the HER in Ni–Mo systems. Based on this understanding, we discuss in detail the relationship between the two types of interface structures obtained by different synthesis methods and their HER performance in Ni–Mo-based catalysts. For the alloy–oxide interfaces, the Ni<sub>4</sub>Mo/MoO<sub>x</sub> (mixed oxide with the Mo ion valence from +4 to +6) composites produced by electrodeposition or hydrothermal combined with thermal reduction exhibit activities close to that of platinum. For only the alloy or oxide, their activities are significantly lower than that of composite structures, indicating the synergistic catalytic effect of binary components. For the alloy–hydroxide interfaces, the activity of the Ni<sub>x</sub>Mo<sub>y</sub> alloy with different Ni/Mo ratios is greatly improved by constructing heterostructures with hydroxides such as Ni(OH)<sub>2</sub> or Co(OH)<sub>2</sub>. In particular, pure alloys obtained by metallurgy must be activated to produce a layer of mixed Ni(OH)<sub>2</sub> and MoO<sub>x</sub> on the surface to achieve high activity. Therefore, it can be seen that the activity of Ni–Mo catalysts probably originates from the interfaces of alloy–oxide or alloy–hydroxide, in which the oxide or hydroxide promotes water dissociation and the alloy accelerates hydrogen combination. These new understandings will provide valuable guidance for the further exploration of advanced HER electrocatalysts.

## 2. Ni–Mo alloy/oxide interfaces

The preparation of the Ni–Mo alloy can be divided into two categories according to different raw materials: chemical method and metallurgical method. The chemical method generates alloys from Ni and Mo metal salts through a series of chemical reactions, while the metallurgical method directly produces alloys from two metals at high temperatures. Chemical methods are widely used in the synthesis of Ni–Mo alloy catalysts due to their advantages such as simple operation and controllable structure. According to the reaction process, chemical methods can also be divided into two types: one is the direct reduction of



**Fig. 1** (A) The reaction mechanism for the HER in alkaline electrolytes and two pathways are presented in the forms of the Volmer–Heyrovsky mechanism and the Volmer–Tafel mechanism. (B) Schematic diagram of synergistic catalysis of alloy–oxide or alloy–hydroxide interface structures, in which the oxide or hydroxide promotes water dissociation and the alloy accelerates hydrogen combination.





Fig. 2 (A) Schematic of the  $\text{Ni}_4\text{Mo}/\text{MoO}_x$  synthesis route on Cu foam. (i) Induced codeposition; (ii) formation of nanointerfaces with the dispersion of the alloy nanoparticles. (B and C) TEM images, (D) HRTEM image, and (E) SAED pattern of  $\text{Ni}_4\text{Mo}$  nanoparticles on amorphous  $\text{MoO}_x$  nanosheets. (F) Polarization curves of Pt/C, bare Cu foam, Ni,  $\text{Ni}_4\text{Mo}$  alloy, and  $\text{Ni}_4\text{Mo}/\text{MoO}_x$ . (G) Electronic properties of interface model systems. Brown balls = Cu; cyan balls = Mo; blue balls = Ni; and red balls = O. (H) Free energy pathway, chemisorption, and formation energy for the HER. Reproduced with permission.<sup>51</sup> Copyright 2019, Wiley-VCH.

metal salts to produce alloys in one step, such as electrochemical reduction deposition, and the other is the two-step method, *i.e.*, the metal salts first form oxide intermediates, such as  $\text{NiMoO}_4$  through a hydrothermal reaction, and then the intermediates are reduced in a hydrogen atmosphere to produce alloys. Since  $\text{Mo}^{6+}$  is more difficult to reduce than  $\text{Ni}^{2+}$ , only part of Mo ions is reduced to form alloys during the reduction of metal salts or oxide intermediates, and excessive Mo ions will form oxides, resulting in a large number of alloy/oxide interface structures. Therefore, the proportion of Ni/Mo and the reduction conditions determine the composition of the products, mainly including the type of Ni–Mo alloy, the content, and valence of  $\text{MoO}_x$ . Under general chemical reduction conditions, such as electrochemical reduction or hydrogen reduction below 600 °C, the Ni–Mo alloy is mainly  $\text{Ni}_4\text{Mo}$ , and  $\text{MoO}_x$  is a mixed oxide with the Mo ion valence from +4 to +6. In the following, we will introduce several Ni–Mo-based catalysts prepared by a chemical method, focusing on the interface structures of  $\text{Ni}_4\text{Mo}/\text{MoO}_x$  and their HER performances.

The  $\text{Ni}_4\text{Mo}$  nanodot/amorphous  $\text{MoO}_x$  nanosheet interface structure was synthesized on copper foam *via* a one-step electrodeposition process as shown in Fig. 2A.<sup>51</sup> In the electrodeposition process, the  $\text{MoO}_4^{2-}$  anions,  $\text{Ni}^{2+}$  cations, and the citrate

anions first formed  $[(\text{NiCit})(\text{MoO}_x)]_{\text{ads}}^-$ , followed by the reduction of  $\text{Ni}^{2+}$  to metallic  $\text{Ni}^0$ , and then the resulting Ni atoms acted as the active sites for the depositing the  $\text{Ni}_4\text{Mo}$  alloy on the  $\text{MoO}_x$  surface. By changing the ratio of Ni/Mo and electroreduction current density, the samples of  $\text{Ni}_4\text{Mo}$  and pure Ni were also synthesized for the comparison experiment. The as-synthesized composite catalyst exhibits ultrathin nanosheet morphology (Fig. 2B) and many nanoparticles with a diameter of about 5 nm are homogeneously distributed on the nanosheets (Fig. 2C). The high-resolution transmission electron microscope (HRTEM) image (Fig. 2D) and selective area electron diffraction (SAED) pattern (Fig. 2E) show lattice fringes of (121) and (310) planes of the  $\text{Ni}_4\text{Mo}$  nanoparticle, while no crystal lattice of  $\text{MoO}_x$  nanosheets could be observed, suggesting the amorphous nature of the  $\text{MoO}_x$  nanosheets. The strong Raman peaks in the range of 550–1000  $\text{cm}^{-1}$  also verify the presence of amorphous molybdenum oxide, and the X-ray photoelectron spectroscopy (XPS) with Ar etching shows that all  $\text{Ni}^{2+}$  is reduced to  $\text{Ni}^0$ , while the Mo element exists not only in the form of  $\text{Mo}^0$  but also oxidized forms including  $\text{Mo}^{4+}$  and  $\text{Mo}^{5+}$ . Fig. 2F shows the polarization curves of Ni metal,  $\text{Ni}_4\text{Mo}$  alloy, and  $\text{Ni}_4\text{Mo}/\text{MoO}_x$  for HER electrocatalysis. The overpotential of  $\text{Ni}_4\text{Mo}/\text{MoO}_x$  at a current density of 10  $\text{mA cm}^{-2}$  is only 16 mV, close to that of Pt/C, and







**Fig. 3** (A) Schematic illustration of the formation of  $\text{MoNi}_4/\text{MoO}_{3-x}$  nanorod arrays on Ni foam. (B) HRTEM image for  $\text{MoNi}_4/\text{MoO}_{3-x}$  (inset: SAED pattern). (C) Raman spectra of  $\text{NiMoO}_4$  (black) and  $\text{MoNi}_4/\text{MoO}_{3-x}$  (green). (D) Mo 3d XPS spectra of  $\text{NiMoO}_4$  (black) and  $\text{MoNi}_4/\text{MoO}_{3-x}$  (green). (E) Polarization curves for Pt/C, Ni foam,  $\text{NiMoO}_4$ , and  $\text{MoNi}_4/\text{MoO}_{3-x}$ . (F) Polarization curves of  $\text{MoNi}_4/\text{MoO}_{3-x}$  for the HER before and after electrochemical oxidation. (G) Polarization curves of  $\text{MoNi}_4/\text{MoO}_{3-x}$  and  $\text{NiMoO}_4$  annealed in an Ar atmosphere (sample-Ar). Scan rate:  $2 \text{ mV s}^{-1}$ . Reproduced with permission.<sup>52</sup> Copyright 2017, Wiley-VCH.

much lower than that of Ni metal (169 mV) and the  $\text{Ni}_4\text{Mo}$  alloy (40 mV). Evidently, the HER activity of Ni increases substantially by forming an alloy with Mo and is further boosted by constructing the  $\text{Ni}_4\text{Mo}/\text{MoO}_x$  nanointerfaces, indicating the beneficial bimetallic ligand effect and synergetic effect between the metal and metal oxide. The theoretical study shows that the  $\text{Ni}_4\text{Mo}/\text{MoO}_x$  has a strong bonding at the interface and the electronic distribution indicates that the  $\text{Ni}_4\text{Mo}$  alloy is more electron-rich (Fig. 2G), compared with the hole-rich  $\text{MoO}_x$ . The comparison of projected density of states (PDOS) indicates that the d-band center of Ni at the interface downshifts toward lower energy levels, which optimizes the bonding strength of  $^*\text{H}$  on the alloy. In  $\text{MoO}_x$ , the deep localized O-2p band overlaps with the Mo-4d-t<sub>2g</sub> state propelling more electrons towards the Mo-4d-e<sub>g</sub> level, which leads Mo sites to high binding activities for the O-related species such as  $^*\text{OH}$  intermediates. Therefore,  $\text{Ni}_4\text{Mo}/\text{MoO}_x$  interface provides a high active area for bond-cleavage of water-splitting under alkaline conditions. The free energy profile for the HER pathway under alkaline conditions is also studied (Fig. 2H), and the  $\text{Ni}_4\text{Mo}/\text{MoO}_x$  interface shows substantial energetic favorable with reaction energy ( $-1.35 \text{ eV}$ ) gained for the HER.

In addition to one-step direct reduction, the two-step method is also widely used in the synthesis of the  $\text{Ni}_4\text{Mo}/\text{MoO}_x$  interface.

Typically,  $\text{NiMoO}_4$  nanorod arrays were first grown on Ni foam *via* a solvothermal process using Ni foam itself as a Ni source and ammonium molybdate as a Mo source, and then  $\text{NiMoO}_4$  was partially decomposed to  $\text{MoNi}_4$  nanocrystals and amorphous  $\text{MoO}_{3-x}$  by annealing in a  $\text{H}_2/\text{Ar}$  atmosphere at  $350 \text{ }^\circ\text{C}$  (Fig. 3A).<sup>52</sup> The HRTEM image (Fig. 3B) displays clear lattice fringes with distances of 1.81 and 2.07 Å corresponding to the (310) and (121) planes of the  $\text{MoNi}_4$  alloy, suggesting the production of  $\text{MoNi}_4$  nanocrystals. Due to the amorphous phase of  $\text{MoO}_{3-x}$ , no continuous lattice fringes are observed in the HRTEM image, but Raman and XPS spectra clearly evidence the existence of  $\text{MoO}_{3-x}$ . As shown in Fig. 3C, the annealed  $\text{MoNi}_4/\text{MoO}_{3-x}$  exhibits three new peaks at 121, 480, and  $719 \text{ cm}^{-1}$  compared to the  $\text{NiMoO}_4$  precursor, and the three peaks could be ascribed to the lattice deformation mode, deformation of  $\text{Mo}=\text{O}$  stretching mode, and modification of the  $\text{Mo}_2\text{-O}$  bond for  $\text{MoO}_{3-x}$  species, respectively. The high-resolution Mo 3d XPS spectra (Fig. 3D) of  $\text{MoNi}_4/\text{MoO}_{3-x}$  further demonstrate the existence of  $\text{Mo}^0$ ,  $\text{Mo}^{4+}$ ,  $\text{Mo}^{5+}$ , and  $\text{Mo}^{6+}$ , and the low-valence states of Mo ( $\text{Mo}^{5+}$  and  $\text{Mo}^{4+}$ ) imply the formation of  $\text{MoO}_{3-x}$  with oxygen vacancies. As dual active components, the  $\text{MoNi}_4/\text{MoO}_{3-x}$  hybrid exhibits a remarkable HER activity with low overpotentials of 17 mV at  $10 \text{ mA cm}^{-2}$  and 114 mV at  $500 \text{ mA cm}^{-2}$  (Fig. 3E), comparable to the values of the Pt catalyst (13 and 59 mV). The turnover



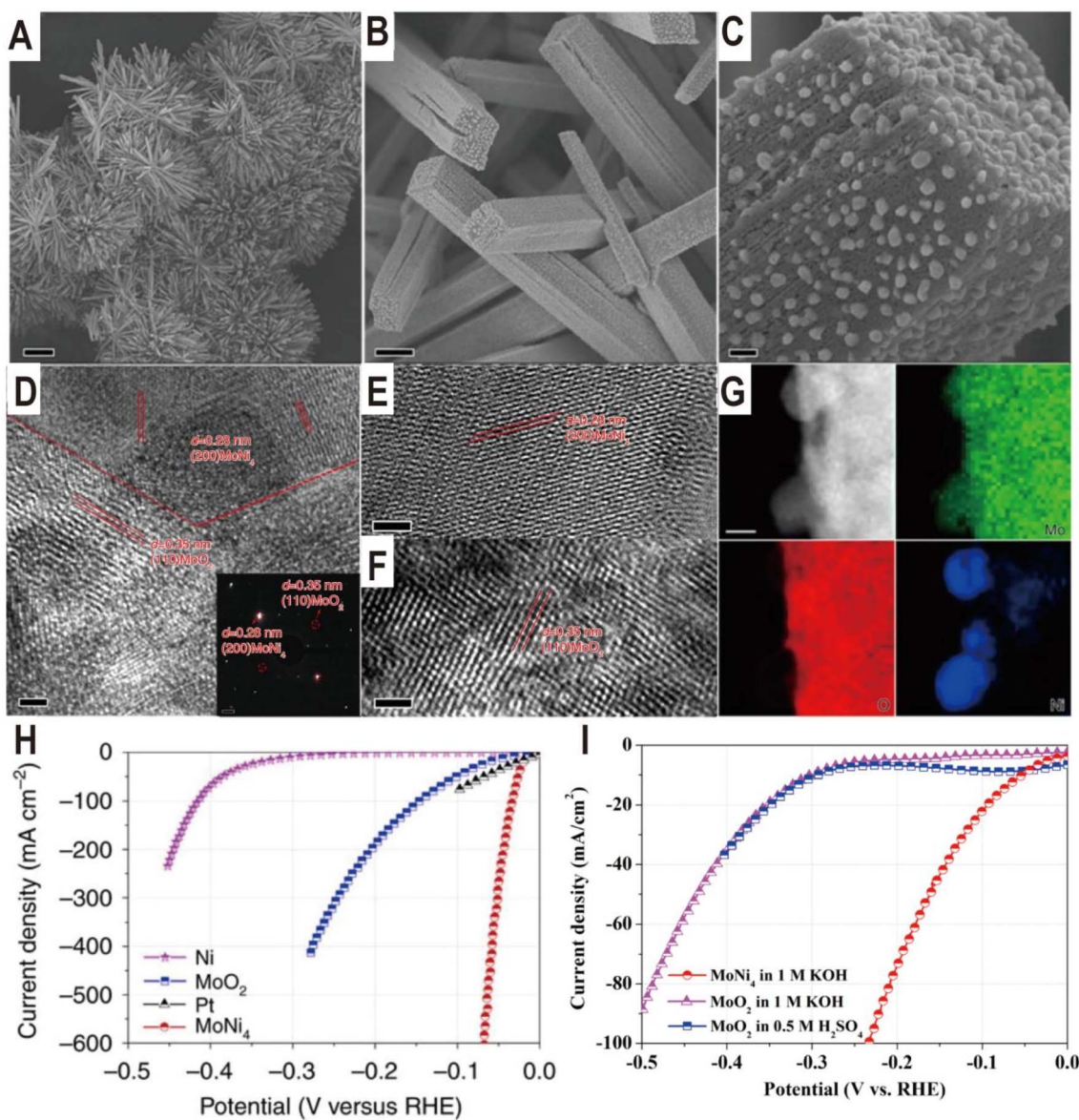


Fig. 4 (A–C) Typical SEM images of MoNi<sub>4</sub>/MoO<sub>2</sub>@Ni. Scale bars, (A) 20 μm; (B) 1 μm; (C) 100 nm. (D–F) HRTEM images of MoNi<sub>4</sub>/MoO<sub>2</sub>@Ni. The inset image in (D) is the related selected-area electron diffraction pattern of the MoNi<sub>4</sub> electrocatalyst and the MoO<sub>2</sub> cuboids. Scale bars, (D–F) 2 nm; inset in (D), 1.1/nm. (G) Corresponding elemental mapping images of the MoNi<sub>4</sub> electrocatalyst and the MoO<sub>2</sub> cuboids. Scale bars: 20 nm. (H) Polarization curves of the MoNi<sub>4</sub> electrocatalyst supported by the MoO<sub>2</sub> cuboids, pure Ni nanosheets, and MoO<sub>2</sub> cuboids on nickel foam. (I) Polarization curves of the MoO<sub>2</sub> nanosheets and the MoNi<sub>4</sub> electrocatalyst supported by the MoO<sub>2</sub> cuboids on carbon cloth in different electrolytes. Reproduced with permission.<sup>23</sup> Copyright 2017, Springer Nature.

frequency (TOF) is also estimated, and at an overpotential of 100 mV, the TOF of MoNi<sub>4</sub>/MoO<sub>3-x</sub> is 1.13 s<sup>-1</sup>, much higher than that of Ni foam (0.06 s<sup>-1</sup>). After the 20 h chronoamperometry test at 20 or 30 mA cm<sup>-2</sup>, the decline of overpotential is negligible and the structure of nanorod arrays and composition remain almost unchanged, keeping the similar valence states of Mo<sup>0</sup>, Mo<sup>4+</sup>, and Mo<sup>5+</sup>. In order to investigate the origin of intrinsic activity, the Mo<sup>0</sup> and Ni<sup>0</sup> as well as Mo<sup>4+</sup> and Mo<sup>5+</sup> in MoNi<sub>4</sub>/MoO<sub>3-x</sub> were oxidized to the high valence states of Mo<sup>6+</sup> and Ni<sup>2+</sup> by *in situ* electrochemical oxidation. As a result, HER activity decreases significantly (Fig. 3F), indicating that the activity of high valence molybdenum oxide is very low. Interestingly, the

control sample annealed in an Ar atmosphere exhibits better activity than the completely oxidized sample due to the existence of little MoO<sub>3-x</sub>; however, since there is no MoNi<sub>4</sub> alloy produced, its activity is still much lower than that of the samples obtained in a reducing atmosphere (Fig. 3G). Therefore, the MoNi<sub>4</sub> alloy and MoO<sub>3-x</sub> should synergistically catalyze the HER at the interface. Other MoNi<sub>4</sub>/MoO<sub>3-x</sub> or MoNi<sub>4</sub>/NiMoO<sub>x</sub> interfaces with different structures such as hollow, branch-leaf hierarchical, or nanowire structures have been prepared by reducing the NiMoO<sub>4</sub> intermediate, and all exhibited excellent HER performance with the overpotentials from 29 to 38 mV at 10 mA



$\text{cm}^{-2}$ , further demonstrating the unique advantages of  $\text{Ni}_4\text{Mo}/\text{MoO}_x$  interfaces.<sup>53–56</sup>

The  $\text{Ni}_4\text{Mo}/\text{MoO}_x$  interface structure of different components can be derived from the  $\text{NiMoO}_4$  intermediate by regulating the reduction temperature. The reduction temperature determines the reduction degree of  $\text{Mo}^{6+}$  ions in  $\text{MoO}_x$ . For example, the  $\text{Ni}_4\text{Mo}/\text{MoO}_2$  interface was obtained by reducing  $\text{NiMoO}_4$  cuboids in a  $\text{H}_2/\text{Ar}$  atmosphere at 500 °C for 2 h.<sup>23</sup> The  $\text{NiMoO}_4$  cuboids were grown beforehand on a piece of nickel foam *via* a hydrothermal reaction, and after reduction,  $\text{MoNi}_4$  nanoparticles were directly constructed on the surfaces of the  $\text{MoO}_2$  cuboids (Fig. 4A–C). The HRTEM images of the samples show lattice fringes with lattice distances of 0.35 and 0.28 nm, which correspond to the (110) facet of  $\text{MoO}_2$  and the (200) facet of  $\text{MoNi}_4$ , respectively (Fig. 4D–F). The energy-dispersive X-ray spectroscopy (EDX) analysis indicates that the surface nanoparticles are constituted by only Mo and Ni with an atomic ratio of 1 : 3.84 (Fig. 4G), which well approaches 1 : 4. The polarization curves (Fig. 4H) show a zero onset potential and the overpotentials at current densities of 10 and 200  $\text{mA cm}^{-2}$  for the  $\text{Ni}_4\text{Mo}/\text{MoO}_2$  electrocatalyst were as low as 15 and 44 mV, respectively, which are significantly lower than the values for the

Ni nanosheets,  $\text{MoO}_2$  cuboids, and commercial Pt/C. For the Pt/C electrocatalyst, it exhibits an overpotential of only 10 mV at a current density of 10  $\text{mA cm}^{-2}$ , but the maximum current density only reaches 80  $\text{mA cm}^{-2}$  due to the Pt catalyst significantly peeling off from the support. In contrast, the three-dimensional (3D) cuboid array grown *in situ* on Ni foam enables the current density of  $\text{Ni}_4\text{Mo}/\text{MoO}_2$  to reach 600  $\text{mA cm}^{-2}$ . Therefore, in addition to intrinsic activity, the 3D structure of the catalyst is also critical to the activity. Based on the electrochemical double-layer capacitances, the TOF of  $\text{MoNi}_4/\text{MoO}_2$  is calculated to be 0.4  $\text{s}^{-1}$  at the overpotential of 50 mV, which is higher than the TOF values of the previously reported Pt-free electrocatalysts. In addition, it can be seen from the polarization curve that  $\text{MoO}_2$  cuboids have a certain HER activity, which is much higher than that of Ni nanosheets. Interestingly, the HER activity of  $\text{MoO}_2$  loaded on carbon paper in acidic and alkaline media is very close (Fig. 4I), which indicates that the additional water dissociation in alkaline media does not reduce the reaction rate, and the overall low activity indicates that the binding capacity of H on  $\text{MoO}_2$  surface is poor. The  $\text{Ni}_4\text{Mo}$  alloy just makes up for this shortcoming, and the combination of the two produces complementary and synergistic effects. The highly

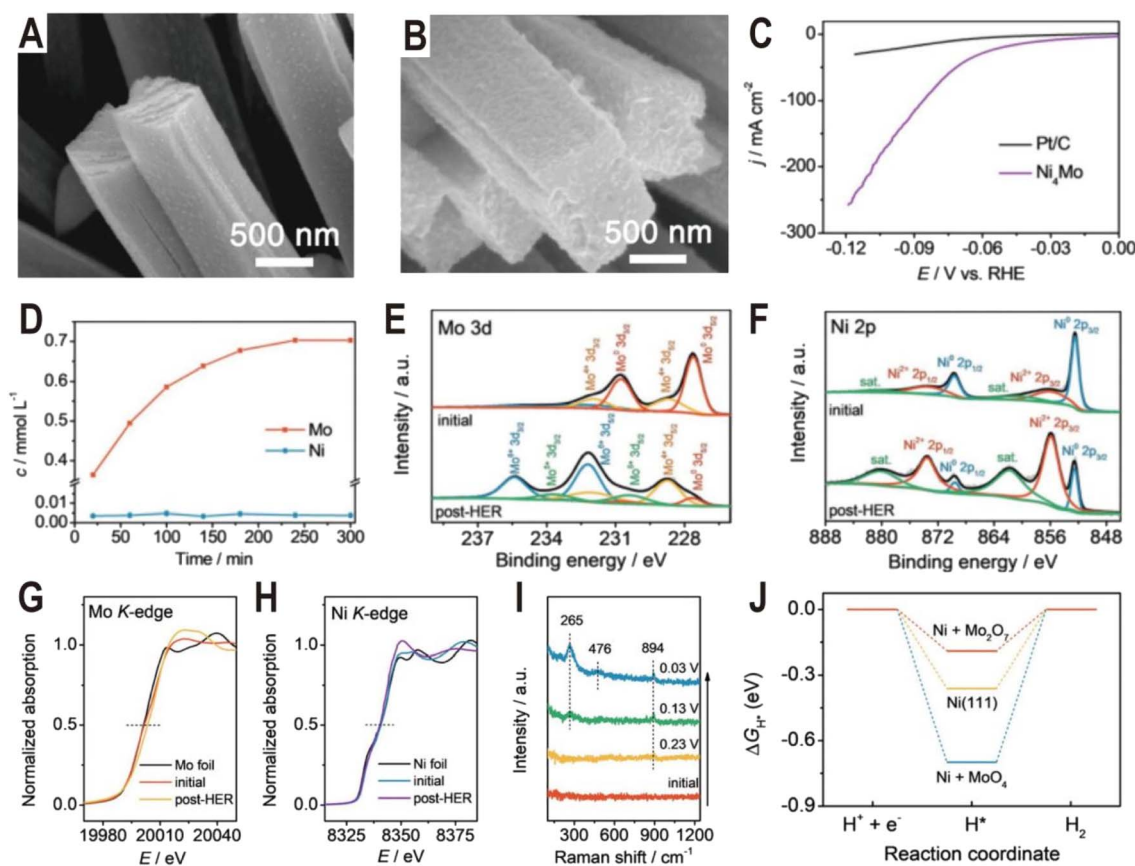


Fig. 5 SEM images of the (A) as-prepared  $\text{Ni}_4\text{Mo}$  nanorod arrays and (B)  $\text{Ni}_4\text{Mo}$  nanorod arrays after the HER test for 12 h. (C) Polarization curves of the  $\text{Ni}_4\text{Mo}$  alloy and Pt/C. (D) Time-dependent concentration of dissolved Mo and Ni in the electrolyte of the  $\text{Ni}_4\text{Mo}$  alloy. (E) Mo 3d and (F) Ni 2p XPS spectra of  $\text{Ni}_4\text{Mo}$  before and after the HER test. (G) Mo K-edge and (H) Ni K-edge XANES spectra of  $\text{Ni}_4\text{Mo}$  before and after the HER test. (I) Potential-dependent *in situ* Raman spectra of  $\text{Ni}_4\text{Mo}$  during the alkaline HER process. (J) Free energy diagrams of the HER on bare Ni(111), Ni(111) +  $\text{MoO}_4$ , and Ni(111) +  $\text{Mo}_2\text{O}_7$ . Reproduced with permission.<sup>58</sup> Copyright 2021, Wiley-VCH.





active Ni<sub>4</sub>Mo/MoO<sub>2</sub> interface has also been demonstrated on other substrates such as stainless-steel wires obtained from worn-out tires (the overpotentials at the current densities of 100 and 200 mA cm<sup>-2</sup> were only 63 and 77 mV, respectively).<sup>57</sup>

The Ni<sub>4</sub>Mo/MoO<sub>x</sub> active interface can be generated not only by controlling the synthesis conditions but also in the electrochemical activation process. Typically, it is demonstrated that some Mo in Ni<sub>4</sub>Mo is oxidized during the activation process and dissolved in the form of MoO<sub>4</sub><sup>2-</sup>.<sup>58</sup> Then, the dissolved MoO<sub>4</sub><sup>2-</sup> will re-adsorb on the alloy surface and polymerize into the dimer Mo<sub>2</sub>O<sub>7</sub><sup>2-</sup> to form a highly active Ni<sub>4</sub>Mo (or Ni)/Mo<sub>2</sub>O<sub>7</sub><sup>2-</sup> interface. Fig. 5A and B show the SEM images of the as-prepared Ni<sub>4</sub>Mo nanorod arrays before and after the HER test. After the electrochemical activation, the nanorod array structure is nearly unchanged, except for the roughened surface and increased porosity. As shown in the polarization curves of Fig. 5C, the activated Ni<sub>4</sub>Mo displays an extremely low overpotential of only 86 mV at 100 mA cm<sup>-2</sup>, which is much better than that of commercial 20% Pt/C with the same mass loading. By analyzing the content of Mo and Ni in the electrolyte, it is found that the content of Ni keeps at a low level throughout the activation process while the content of Mo increases with time and reaches the summit after 4 h (Fig. 5D). The Mo 3d XPS spectra (Fig. 5E) show that the peaks of Mo<sup>0</sup> obviously decrease after the HER test, while the peaks of Mo<sup>4+</sup>, Mo<sup>5+</sup>, and Mo<sup>6+</sup> notably increase, indicating the oxidation of Mo. Similarly, in the Ni 2p XPS spectra (Fig. 5F), the ratio of Ni<sup>2+</sup> also increases. X-ray absorption near edge structure (XANES) is further employed to investigate the change of valence state of Mo and Ni. In the Mo K-edge spectra (Fig. 5G), the post-HER absorption edge is obviously larger than that of the initial one, confirming the oxidation of Mo, while for the Ni K-edge spectra (Fig. 5H), both the initial and the post-HER samples show a similar absorption edge to Ni foil, indicating that Ni is mainly zero valent in the reaction process. *In situ* Raman spectra are then used to explore the change of Mo species during HER activation (Fig. 5I). Initially, there is no Raman signal, and after applying a voltage of 0.23 V, a peak centered at 894 cm<sup>-1</sup> first appears, which can be assigned to Mo=O symmetric stretching vibration in the MoO<sub>4</sub> tetrahedron, indicating the production of MoO<sub>4</sub><sup>2-</sup> ions. Interestingly, with the potential decreasing, another two peaks at 265 and 476 cm<sup>-1</sup> arise and become strong, both of which correspond to the deformation mode and symmetric stretching mode of Mo–O–Mo, respectively. The appearance of these two new peaks indicates the possible polymerization of MoO<sub>4</sub><sup>2-</sup> into the dimer of Mo<sub>2</sub>O<sub>7</sub><sup>2-</sup>. The DFT calculations further demonstrate that the Ni (Ni<sub>4</sub>Mo)/Mo<sub>2</sub>O<sub>7</sub><sup>2-</sup> interface optimizes the bonding energy with the adsorbed hydrogen (Fig. 5J).

### 3. Ni<sub>x</sub>Mo<sub>y</sub> alloy/hydroxide interfaces

Except oxides, metal hydroxides such as Ni(OH)<sub>2</sub> and Co(OH)<sub>2</sub> are another kind of active component to promote the dissociation of water for the HER. For example, the Ni(OH)<sub>2</sub> modified Mo<sub>0.84</sub>Ni<sub>0.16</sub> alloy exhibited significantly enhanced activity for the HER compared to the unmodified alloy.<sup>59</sup> The synthesis process of Mo<sub>0.84</sub>Ni<sub>0.16</sub>@Ni(OH)<sub>2</sub> hybrids is illustrated in Fig. 6A. First the

NiMoO<sub>4</sub> nanowire precursors were grown on Ni foam by a facile hydrothermal process and then were calcined in a H<sub>2</sub>/Ar atmosphere to obtain the NiMoO<sub>4</sub>–Mo<sub>0.84</sub>Ni<sub>0.16</sub> composites. Subsequently, the Ni(OH)<sub>2</sub> nanosheets were modified on the surface of the composites by electrodeposition. As a result, the Mo<sub>0.84</sub>Ni<sub>0.16</sub> alloy and Ni(OH)<sub>2</sub> nanosheets formed a heterostructure (Mo<sub>0.84</sub>Ni<sub>0.16</sub>@Ni(OH)<sub>2</sub>). The HRTEM image of the interface (Fig. 6B) demonstrates the lattice distance of 0.27, 0.23, 0.20, and 0.34 nm, which corresponds to the (100), (101), (240), and (040) planes of Ni(OH)<sub>2</sub>, respectively, and the crystalline lattice distance of 0.24 nm and 0.28 nm corresponds to the (111) plane of Mo<sub>0.84</sub>Ni<sub>0.16</sub> and (–111) plane of NiMoO<sub>4</sub>, respectively. In the O 1s XPS spectra (Fig. 6C), the intensity of the OH<sup>-</sup> peak becomes strong in Mo<sub>0.84</sub>Ni<sub>0.16</sub>@Ni(OH)<sub>2</sub> compared to NiMoO<sub>4</sub>–Mo<sub>0.84</sub>Ni<sub>0.16</sub> and both O 1s peaks also exhibit a positive shift, suggesting the strong electronic interaction between Mo<sub>0.84</sub>Ni<sub>0.16</sub> and Ni(OH)<sub>2</sub>. As expected, due to the abundant interface structure and synergistic effect between Mo<sub>0.84</sub>Ni<sub>0.16</sub> and Ni(OH)<sub>2</sub>, the Mo<sub>0.84</sub>Ni<sub>0.16</sub>@Ni(OH)<sub>2</sub> heterostructure exhibited high HER activity with a very small overpotential at 10 mA cm<sup>-2</sup> (10 mV), low Tafel slope (71 mV dec<sup>-1</sup>), and excellent stability (100 h) (Fig. 6D–F), which is much better than that of unmodified NiMoO<sub>4</sub>–Mo<sub>0.84</sub>Ni<sub>0.16</sub>. After the 100 h stability test, the SEM image of Mo<sub>0.84</sub>Ni<sub>0.16</sub>@Ni(OH)<sub>2</sub> (the inset of Fig. 6F) displays the consistent surface morphology with the original Mo<sub>0.84</sub>Ni<sub>0.16</sub>@Ni(OH)<sub>2</sub>. Another more complex heterostructure is composed of Ni<sub>4</sub>Mo, Ni<sub>3</sub>N, Ni, and Ni(OH)<sub>2</sub> (Fig. 6G and H), which was synthesized by low-temperature H<sub>2</sub>/N<sub>2</sub> plasma activation of Mo-doped Ni(OH)<sub>2</sub> nanosheets arrays (P–Mo–Ni(OH)<sub>2</sub> NSAs).<sup>60</sup> Due to the synergistic effect of different components, especially the interaction between Ni<sub>4</sub>Mo and Ni(OH)<sub>2</sub>, the optimized heterostructure only needs a low overpotential of 22 and 98 mV to deliver a current density of 10 and 100 mA cm<sup>-2</sup> (Fig. 6I), respectively. At an overpotential of 50 mV, the TOF value of P–Mo–Ni(OH)<sub>2</sub> is 1.325 s<sup>-1</sup>, which is much larger than that of Ni(OH)<sub>2</sub> (0.42 s<sup>-1</sup>). After the 100 h stability test at an overpotential of 22 mV, the HRTEM image, XRD pattern, and XPS spectra imply that metallic Ni, Ni<sub>4</sub>Mo alloy, Ni<sub>3</sub>N, and Mo incorporated Ni(OH)<sub>2</sub> still exist. Moreover, it is found that the Mo concentration in the electrolyte first increases from 0 to 1.13 ppm and then remains relatively stable, and except for the dissolution of a certain amount of Mo and N and the oxidation of some amount of metallic Ni, the chemical composition and valence states of the P–Mo–Ni(OH)<sub>2</sub> change little during the HER. Theoretical and experimental studies show that the metallic Ni<sub>4</sub>Mo optimizes the Gibbs free energy for hydrogen adsorption and Ni(OH)<sub>2</sub> can weaken the HO–H bond of adsorbed water to facilitate water dissociation in the hetero-interface of Ni<sub>4</sub>Mo/Ni(OH)<sub>2</sub>.

Ni(OH)<sub>2</sub> on the NiMo alloy surface can not only be modified additionally but also be produced *in situ* by introducing Fe ions. It has been demonstrated that the presence of Fe on the surface of the Ni<sub>4</sub>Mo alloy can induce the conversion of the Ni to Ni(OH)<sub>2</sub> by forming the Fe–(OH)<sub>4</sub>–Ni<sub>4</sub> motif.<sup>50</sup> This catalyst is composed of hydroxide-mediated Ni<sub>4</sub>Mo nanoparticles decorated with FeO<sub>x</sub> and anchored onto MoO<sub>2</sub> nanosheets (h–NiMoFe). It was prepared by a two-step method: Fe-doped NiMoO<sub>4</sub> microsphere precursors (Fe–NiMoO<sub>4</sub>) were first grown





Fig. 6 (A) Schematic illustration of the preparation of the  $\text{Mo}_{0.84}\text{Ni}_{0.16}@\text{Ni}(\text{OH})_2$  heterostructure. (B) HRTEM image of  $\text{Mo}_{0.84}\text{Ni}_{0.16}@\text{Ni}(\text{OH})_2$ . (C) The high-resolution XPS spectra of O 1s for  $\text{NiMoO}_4\text{-Mo}_{0.84}\text{Ni}_{0.16}$  composites and the  $\text{Mo}_{0.84}\text{Ni}_{0.16}@\text{Ni}(\text{OH})_2$  heterostructure. (D and E) Polarization curves and the corresponding Tafel plots of  $\text{NiMoO}_4\text{-Mo}_{0.84}\text{Ni}_{0.16}$  and  $\text{Mo}_{0.84}\text{Ni}_{0.16}@\text{Ni}(\text{OH})_2$  with different deposition times of 5, 10, and 15 min, and Pt/C. (F) The chronoamperometric curve at an overpotential of 34 mV for  $\text{Mo}_{0.84}\text{Ni}_{0.16}@\text{Ni}(\text{OH})_2$ . The inset is the SEM image after the stability test. Reproduced with permission.<sup>59</sup> Copyright 2020, Royal Society of Chemistry. (G and H) SAED pattern and HRTEM image of P-Mo-Ni(OH)<sub>2</sub> NSAs. (I) Polarization curves of Ni foam, P-Ni foam, Ni(OH)<sub>2</sub> NSAs, Mo-Ni(OH)<sub>2</sub> NSAs, P-Ni(OH)<sub>2</sub> NSAs, P-Mo-Ni(OH)<sub>2</sub> NSAs, and Pt/C. Reproduced with permission.<sup>60</sup> Copyright 2020, Elsevier.

on Ni foam by the hydrothermal method and then reduced at 500 °C in a Ar/H<sub>2</sub> atmosphere. The TEM image (Fig. 7A) shows that the catalyst is composed of ultrathin nanosheets with nanoparticles anchored onto them and the HRTEM images (Fig. 7B and C) show typical lattice spacings of 0.24 nm and 0.20 nm, corresponding to the (020) plane of MoO<sub>2</sub> and the (220) plane of Ni<sub>4</sub>Mo, respectively, and no Fe-based compounds are detected. The polarization curves in Fig. 7D show that the activity of h-NiMoFe is much better than that of NiMo and Ni samples, indicating that alloying of Ni<sub>4</sub>Mo and addition of Fe play vital roles in the good performance of the h-NiMoFe catalyst. The overpotential of h-NiMoFe at 10 mA cm<sup>-2</sup> is only 14 mV and even at an increased current density of 1000 mA cm<sup>-2</sup>, the overpotential is still very low (98 mV). After 40 h continuous operation, h-NiMoFe shows good stability and maintains its crystalline structure well. In the Ni 3s XPS spectra, it is found that there is a higher content of surface hydroxide on h-NiMoFe than those on the control NiMo and Ni samples due to the introduction of Fe (Fig. 7E). *In situ* XAS characterization results

indicate that a new chemical species containing the Fe-O(H)-Ni motif forms and FT-EXAFS fitting results show that an iron site is coordinated by four O atoms (or OH groups) and four Ni atoms. Density functional theory (DFT) calculations confirm the local structure of one Fe connecting to four hydroxylated Ni sites on the Ni<sub>4</sub>Mo surface (denoted as Fe-(OH)<sub>4</sub>-Ni<sub>4</sub>, Fig. 7F and G). The added iron in h-NiMoFe extracts electrons from Ni atoms to lead to more unoccupied states of Ni sites, which remarkably changes the charge distribution of Ni sites. The comparison of PDOS shows that the d-band centers of Ni in h-NiMoFe exhibit more negative energy than the NiMo catalyst, indicating a stronger H bonding behavior. The energy diagrams of Gibbs free energies further show nearly 0 eV adsorption free energy of H ( $\Delta G_{\text{H}}$ ) and a much lower energy barrier and fast kinetics for water dissociation for h-NiMoFe compared to Pt (Fig. 7H and I). In addition to Ni(OH)<sub>2</sub>, this system also contains MoO<sub>2</sub>, which can also promote water dissociation as discussed above, so this system may be a catalytic system with synergistic effects of two interfaces: Ni<sub>4</sub>Mo/Ni(OH)<sub>2</sub> and Ni<sub>4</sub>Mo/MoO<sub>2</sub>.







Fig. 7 (A) TEM image of the h-NiMoFe catalyst. (B and C) HRTEM images of h-NiMoFe. (B) An enlarged view of h-NiMoFe, lattice fringes of a MoO<sub>2</sub> nanosheet (blue box) and Ni<sub>4</sub>Mo nanoparticles (red box), scale bars in the insets are 5 1/nm; (C) side view of the MoO<sub>2</sub> nanosheet. (D) Polarization curves of h-NiMoFe and its control samples. (E) Relative percentages of surface Ni species from the Ni 3s XPS spectra on the Ni, NiMo, and h-NiMoFe samples before and after the HER test. (F) FT-EXAFS of the h-NiMoFe catalyst and control samples at Fe K-edges. (G) Calculated relaxed configuration of an Fe-(OH)<sub>n</sub>-Ni<sub>4</sub> motif on a Ni<sub>4</sub>Mo (002) slab and the corresponding charge density difference in this configuration. (H and I) Adsorption energies for H and dissociated H<sub>2</sub>O on h-NiMoFe and control samples. Reproduced with permission.<sup>50</sup> Copyright 2021, Royal Society of Chemistry.

Similar to Ni(OH)<sub>2</sub>, Co(OH)<sub>2</sub> is also used to modify the NiMo alloy to improve the HER performance. The Co(OH)<sub>2</sub> cavity array-encapsulated NiMo alloy on carbon cloth (Co(OH)<sub>2</sub>/NiMo CA@CC) was prepared by a two-step electrodeposition route.<sup>64</sup> As shown in Fig. 8A, the NiMo alloy was first deposited on carbon cloth by chronopotentiometry (defined as NiMo@CC). And then, with the assistance of a layer of polystyrene (PS) template, Co(OH)<sub>2</sub> was confined to nucleate and grow around the PS microspheres by the second electrodeposition. After dissolving the PS template, the uniform and ordered Co(OH)<sub>2</sub> cavity array was obtained on the surface of NiMo@CC (defined as Co(OH)<sub>2</sub>/NiMo CA@CC). The NiMo alloy is composed of uniform nanoparticles with an average size of ~70 nm and these nanoparticles are connected to the Co(OH)<sub>2</sub> thin nanosheets. The HRTEM image at the boundary shows lattice fringes with a distance of 0.21 and 0.25 nm (Fig. 8B), corresponding to the (111) plane of Ni metal and the (100) plane of α-Co(OH)<sub>2</sub>, respectively, suggesting that metallic Ni as the dominant phase exists in the Ni<sub>x</sub>Mo<sub>y</sub> alloy and forms a heterojunction interface with Co(OH)<sub>2</sub>. From the

XPS spectra (Fig. 8C–E), it is found that both the Ni 2p peaks and Mo 3d peaks in Co(OH)<sub>2</sub>/NiMo CA@CC are shifted by 0.4 and 0.5 eV toward the lower binding energy relative to those of NiMo@CC, respectively, while the characteristic peaks of Co 2p are shifted toward high binding energy by 0.8 eV (Fig. 8E), indicating the transfer of electrons from Co of Co(OH)<sub>2</sub> to the surface of the NiMo alloy. The HER polarization curves (Fig. 8F) show that Co(OH)<sub>2</sub>/NiMo CA@CC exhibits the highest catalytic activity among NiMo@CC, Co(OH)<sub>2</sub>@CC, and NiMo/Co(OH)<sub>2</sub>@CC with an overpotential of 30 mV to reach 10 mA cm<sup>-2</sup>. The comparative experiments demonstrate that the coupling of NiMo with Co(OH)<sub>2</sub> and the cavity array structure can effectively boost the HER activity. The Gibbs free energy diagram (Fig. 8G) shows that water is more easily adsorbed on Co(OH)<sub>2</sub> than on NiMo alloy, and the energy barrier to break the H–OH bond is only 0.58 eV on Co(OH)<sub>2</sub>, which is much lower than that of the NiMo alloy (up to 1.04 eV), indicating that the introduction of Co(OH)<sub>2</sub> substantially accelerates the kinetics of the water adsorption and dissociation steps. Moreover, from the PDOS of





Fig. 8 (A) Synthetic illustration of the fabrication process of  $\text{Co(OH)}_2/\text{NiMo CA@CC}$ . (B) HRTEM image of NiMo alloy particles from  $\text{Co(OH)}_2/\text{NiMo CA@CC}$ . (C–E) XPS spectra of Ni 2p, Mo 3d, and Co 2p of  $\text{Co(OH)}_2/\text{NiMo CA@CC}$ ,  $\text{Co(OH)}_2/\text{NiMo@CC}$ ,  $\text{NiMo@CC}$ , and  $\text{Co(OH)}_2@\text{CC}$ . (F) Polarization curves of bare CC,  $\text{Co(OH)}_2/\text{NiMo CA@CC}$ ,  $\text{Co(OH)}_2/\text{NiMo@CC}$ ,  $\text{NiMo@CC}$ ,  $\text{Co(OH)}_2@\text{CC}$ , and Pt/C@CC toward the HER in 1.0 M KOH. (G) The free energy diagram for the HER on the surface of  $\text{Ni}_{58}\text{Mo}_6$  and  $\text{Co(OH)}_2$ , and the interface of  $\text{Co(OH)}_2/\text{Ni}_{44}\text{Mo}_4$ . (H) The projected density-of-states of d orbitals of  $\text{Ni}_{58}\text{Mo}_6$ ,  $\text{Co(OH)}_2$ , and  $\text{Co(OH)}_2/\text{Ni}_{44}\text{Mo}_4$  with aligned Fermi levels. Reproduced with permission.<sup>61</sup> Copyright 2021, Wiley-VCH.

d orbitals (Fig. 8H), the d-band center of  $\text{Co(OH)}_2/\text{NiMo}$  (−1.80 eV) is downshifted relative to the single NiMo (−1.58 eV), which can weaken the bonding strength of H and thus promote the  $\text{H}_2$  evolution.

In addition to the interfaces of controllable synthesis, the  $\text{Ni}_x\text{Mo}_y$  alloy/hydroxide interface can also be generated during electrochemical activation. For the  $\text{Ni}_x\text{Mo}_y$  alloys obtained by high-temperature metallurgy, their HER activities are generally not high due to the lack of an interface structure, but their activities will be greatly improved after electrochemical activation to produce a layer of  $\text{Ni(OH)}_2$  or  $\text{MoO}_x$  on the surface. A typical example is the nanosponge-like  $\text{Ni}_{0.33}\text{Mo}_{0.67}$  solid solution catalyst synthesized *via* a one-step high-temperature (900 °C) sintering method by using metallic Ni, Mo, and magnesium (Mg) powders (Fig. 9A).<sup>62</sup> Spherical Mg powder was added as a pore-making agent to prepare nanoporous alloys. The HRTEM image of the  $\text{Ni}_{0.33}\text{Mo}_{0.67}$ -900 solid solution shows an interplanar

spacing of 0.221 nm (Fig. 9B), corresponding to the (110) facet of the metallic Mo body-centered cubic (bcc) structure. Interestingly, after an activation of 200 cycles with a scan rate of  $10 \text{ mV s}^{-1}$  and an overpotential range of 0–0.447 V (*vs.* RHE), an (oxy)hydroxide layer with a thickness of approximately 8 nm was clearly formed on the surface of  $\text{Ni}_{0.33}\text{Mo}_{0.67}$ -900, as shown in Fig. 9C. XPS spectra further prove the change of surface composition before and after activation. For Ni 2p (Fig. 9D), after aging, the peaks of  $\text{Ni}^0$  and  $\text{Ni}^{3+}$  at 852.4 eV and 855.8 eV disappear and the peak of  $\text{Ni}^{2+}$  at 855.6 eV is produced, corresponding to a phase of  $\text{Ni(OH)}_2$ . For Mo 3d (Fig. 9E), the relative amount of  $\text{Mo}^0$ ,  $\text{Mo}^{4+}$ , and  $\text{Mo}^{5+}$  species in the activated sample rapidly decreases relative to the pristine sample; in contrast,  $\text{Mo}^{6+}$  increases, indicating the formation of high valence  $\text{MoO}_x$ . For O 1s (Fig. 9F), the peak intensity of hydroxyl groups has an obvious increase. The polarization curves in Fig. 9G show that the activated  $\text{Ni}_{0.33}\text{Mo}_{0.67}$ -900 solid solution catalyst exhibits a lower overpotential of 37 mV at







Fig. 9 (A) Schematic diagram of the fabrication process for a nanosponge-like NiMo solid solution prepared by high-temperature sintering. (B and C) HRTEM images of  $\text{Ni}_{0.33}\text{Mo}_{0.67}$ -900 before and after the HER test. (D–F) Ni 2p, Mo 3d, and O 1s XPS spectra of  $\text{Ni}_{0.33}\text{Mo}_{0.67}$ -900 before and after aging. (G) Polarization curves of pure Ni-1000, pure Mo-1000,  $\text{Ni}_{0.94}\text{Mo}_{0.06}$ -1000,  $\text{Ni}_{0.5}\text{Mo}_{0.5}$ -1000,  $\text{Ni}_{0.33}\text{Mo}_{0.67}$ -900, and Pt/C electrodes in a 1 M KOH solution. (H) Comparison of polarization curves of  $\text{Ni}_{0.33}\text{Mo}_{0.67}$ -900 obtained under different conditions. (I) Bath voltage variations at a current density of  $2 \text{ A cm}^{-2}$  in 1 M KOH solution. Reproduced with permission.<sup>62</sup> Copyright 2020, American Chemical Society.

a current density of  $10 \text{ mA cm}^{-2}$ , and the performance of the sample without activation is obviously lower than that of the sample (Fig. 9H). The stability test curve also shows an obvious activation process, and the bath voltage demonstrates a fast decrease in the initial period of electrolysis, as shown in Fig. 9I. After activation, the  $\text{Ni}_{0.33}\text{Mo}_{0.67}$ -900 solid solution possesses an ultrahigh stability (>300 h) at  $2 \text{ A cm}^{-2}$  in a 1 M KOH electrolyte. As another example, the plasma sprayed RANEY®-type NiMo electrode also forms a layer of  $\text{Ni}(\text{OH})_2$  and  $\text{MoO}_x$  after chemical activation.<sup>63</sup> Due to proper micropore/macropore distribution, appropriate amounts of active nickel and molybdenum species, and the oxidation degree, the activated NiMo electrode delivered a high current density of  $200 \text{ mA cm}^{-2}$  at 82 mV and stabilized with no measurable degradation over 47 days for the HER in 30 wt% KOH.

From the above example analysis, it can be seen that the  $\text{Ni}_x\text{Mo}_y$  alloy/hydroxide interface exhibits a bi-functional effect to simultaneously promote the dissociation of water and the

combination of adsorbed hydrogen. The kinetics of the HER in alkaline solutions will depend both on the rate of desorption of  $\text{OH}_{\text{ad}}$  to accommodate the adsorption of  $\text{H}_2\text{O}$  on hydroxide and on the rate of  $\text{H}_{\text{ad}}$  recombination, which is optimized on the alloy. For the dissociation of water, the activity will be controlled by the bond strength between metal hydroxides  $\text{M}(\text{OH})_x$  and  $\text{OH}_{\text{ad}}$ . In order to explore their interaction, a descriptor,  $\text{OH}-\text{M}^{2+\delta}$  bond strength ( $0 \leq \delta \leq 1.5$ ), was proposed, and it was found that the activity trend was  $\text{Mn} < \text{Fe} < \text{Co} < \text{Ni}$ , which was inversely proportional to the  $\text{OH}-\text{M}^{2+\delta}$  strength of  $\text{Ni} < \text{Co} < \text{Fe} < \text{Mn}$ .<sup>64</sup> For the Fe and Mn hydroxides, due to their strong bonding with  $\text{OH}_{\text{ad}}$ ,  $\text{OH}_{\text{ad}}$  cannot be desorbed and the reaction cannot continue, resulting in ‘poisoning’ of the surface. In contrast, for Ni hydroxides that bind  $\text{OH}_{\text{ad}}$  neither too strongly nor too weakly, the maximum activity was realized for the HER. Thus, the overall rate of the HER may, in principle, be controlled by optimizing the density and the nature of the sites required for dissociation of water on  $\text{M}(\text{OH})_x$ , as well as the  $\text{OH}-\text{M}^{2+\delta}$  and alloy- $\text{H}_{\text{ad}}$  energetics.







Table 1 Electrochemical performances of highly active Ni–Mo-based catalysts with alloy–oxide interfaces in 1 M KOH

Electrocatalyst	Synthesis method	Composition and structure	Onset potential (mV)	Overpotential (mV)	TOF (s <sup>-1</sup> )	Tafel slope (mV per decade)	Stability	Ref.
Ni <sub>4</sub> Mo/MoO <sub>x</sub> /Cu	Electrodeposition	Ni <sub>4</sub> Mo, MoO <sub>x</sub> , nanosheets	0	$\eta_{10} = 16$ , $\eta_{250} = 105$ (70 °C, 30% KOH)	—	64	10 mA cm <sup>-2</sup> , 24 h, 50 mA cm <sup>-2</sup> , 24 h, 100 mA cm <sup>-2</sup> , 24 h	51
MoNi <sub>4</sub> /MoO <sub>3-x</sub>	Hydrothermal and reduction @ 350 °C	MoNi <sub>4</sub> , MoO <sub>3-x</sub>	5	$\eta_{10} = 17$ , $\eta_{100} = 52$ , $\eta_{500} = 114$	1.13 @ $\eta_{100}$	36	20 and 30 mA cm <sup>-2</sup> for total 30 h	52
MoNi <sub>4</sub> /MoO <sub>2</sub> @NF	Hydrothermal and reduction @ 500 °C	MoNi <sub>4</sub> , MoO <sub>2</sub> , cuboids	0	$\eta_{10} = 15$ , $\eta_{200} = 44$	0.4 @ $\eta_{50}$	30	2000 CV cycles; 10, 100, 23 and 200 mA cm <sup>-2</sup> for total 30 h	23
MoNi <sub>4</sub> /SSW	Precipitation and decomposition	MoO <sub>2</sub> , MoNi <sub>4</sub>	—	$\eta_{100} = 63$ , $\eta_{200} = 77$ , $\eta_{500} = 115$ (5 M KOH, 353 K), $\eta_{1000} = 161$ (5 M KOH, 353 K)	—	40	100 mA cm <sup>-2</sup> , 18 h, 150 mA cm <sup>-2</sup> , 150 h (5 M KOH, 353 K)	57
MoNi-HS	Hydrothermal and reduction @ 500 °C	Ni <sub>4</sub> Mo, MoO <sub>x</sub> , nanosheets	—	$\eta_{10} = 38$	—	31.4	10 mA cm <sup>-2</sup> , 10 h	53
NiMo/MoO <sub>2</sub>	Hydrothermal and reduction @ 450 °C	MoO <sub>2</sub> , NiMo, nanosheets	12	$\eta_{10} = 52$	1.06 @ $\eta_{150}$	43.6	100 mA cm <sup>-2</sup> , 30 h	56
NC/NiMo/NiMoO <sub>x</sub> /NF	Hydrothermal and reduction @ 400 °C	Ni <sub>4</sub> Mo, MoO <sub>3-x</sub> , NiMoO <sub>4</sub> , nanowires	5	$\eta_{10} = 29$ , $\eta_{200} = 160$	—	46	179 mA cm <sup>-2</sup> , 50 h	54
MoNi <sub>4</sub> /MoO <sub>3-x</sub> /NiCo@NF	Hydrothermal and reduction @ 350 °C	MoNi <sub>4</sub> , MoO <sub>3-x</sub> , NiCo, nanowires	—	$\eta_{10} = 33$ , $\eta_{100} = 149$	—	34	3000 CV cycles; 20 mA cm <sup>-2</sup> , 24 h	55
Ni–Mo–O/Ni <sub>4</sub> Mo@NC	Electrodeposition, calcination, and electrodeposition	Ni <sub>4</sub> Mo, nanosheets	—	$\eta_{10} = 61$	—	99	10 mA cm <sup>-2</sup> , 15 h	24
NiMoFe@MoO <sub>2</sub>	Hydrothermal and reduction @ 500 °C	NiMoFe, MoO <sub>2</sub> , nano-pillars	—	$\eta_{10} = 24$ , $\eta_{100} = 63$ , $\eta_{200} = 83$ , $\eta_{500} = 130$	—	33	10, 100, 200, 100, and 10 mA cm <sup>-2</sup> for total 140 h	25
MoNi <sub>4</sub> @MoO <sub>3-x</sub>	Hydrothermal and reduction @ 550 °C	MoNi <sub>4</sub> , MoO <sub>3-x</sub> , nanorods	5.4	$\eta_{10} = 58.6$	—	44.8	10 mA cm <sup>-2</sup> , 10 h	37
NiMo M/O	Hydrothermal and reduction @ 500 °C	MoNi <sub>4</sub> , MoO <sub>2</sub> , nanosheets	—	$\eta_{10} = 16$ , $\eta_{50} = 50$	—	31.9	10 mA cm <sup>-2</sup> , 11 h	28

Table 2 Electrochemical performances of highly active Ni–Mo-based catalysts with alloy–hydroxide interfaces in 1 M KOH

Electrocatalyst	Synthesis method	Composition and structure	Overpotential (mV)	TOF (s <sup>-1</sup> )	Tafel slope (mV per decade)	Stability	Ref.
Mo <sub>0.84</sub> Ni <sub>0.16</sub> @Ni(OH) <sub>2</sub>	Hydrothermal, reduction @ 500 °C and electrodeposition	NiMo <sub>0.84</sub> , Mo <sub>0.84</sub> Ni <sub>0.16</sub> , Ni(OH) <sub>2</sub> , nanowires	$\eta_{10} = 10$ , $\eta_{100} = 91$	0.93 @ $\eta_{100}$	71	3000 CV cycles; 20 mA cm <sup>-2</sup> , 100 h	59
P–Mo–Ni(OH) <sub>2</sub>	Hydrothermal and low-temperature H <sub>2</sub> /N <sub>2</sub> plasma activation	MoNi <sub>4</sub> , Ni(OH) <sub>2</sub> , Ni <sub>3</sub> N, MoNiN, nanosheet	$\eta_{10} = 22$ , $\eta_{100} = 98$	1.325 @ $\eta_{50}$	80	10 mA cm <sup>-2</sup> , 100 h, 50 mA cm <sup>-2</sup> , 50 h	60
Co(OH) <sub>2</sub> /NiMo CA@CC	Electrodeposition	Ni <sub>x</sub> Mo <sub>y</sub> , Co(OH) <sub>2</sub> , nanosheet	$\eta_{10} = 30$	—	41	10 mA cm <sup>-2</sup> , 24 h, 50 mA cm <sup>-2</sup> , 24 h, 100 mA cm <sup>-2</sup> , 24 h	61
h–NiMoFe	Hydrothermal and reduction @ 500 °C	MoO <sub>2</sub> , Ni <sub>4</sub> Mo, Fe–(OH) <sub>4</sub> –Ni <sub>4</sub> , nanosheet	$\eta_{10} = 14$ , $\eta_{500} = 74$ , $\eta_{1000} = 97$	2 @ $\eta_{50}$	30.6	200, 600, 1000, and 1500 mA cm <sup>-2</sup> for total 40 h	50
Ni <sub>0.33</sub> Mo <sub>0.67</sub> –900	High-temperature sintering	Ni <sub>0.33</sub> Mo <sub>0.67</sub> , MoO <sub>3</sub> , Ni(OH) <sub>2</sub> , nanosponge	$\eta_{10} = 37$ , $\eta_{1000} = 316$	—	39.2	2 A cm <sup>-2</sup> , 300 h	62
RANEY®-type NiMo	Atmospheric plasma spraying and activation	MoNi, Mo <sub>1.08</sub> Ni <sub>2.93</sub> , Ni(OH) <sub>2</sub> , nanosponge	$\eta_{200} = 82$ (30 wt% KOH)	—	36	2 A, 47 days (30 wt% KOH)	63
NiMo/Ni(OH) <sub>2</sub> /CC	Hydrothermal and electrodeposition	NiMo, Ni(OH) <sub>2</sub> , nanosheet	$\eta_{10} = 132$	—	134.1	10 mA cm <sup>-2</sup> , 24 h	41
NiMo@Ni(OH) <sub>2</sub> MoO <sub>x</sub>	Electrodeposition	Ni(OH) <sub>2</sub> , MoO <sub>3</sub> , MoO <sub>2</sub> , nanoparticles	$\eta_{100} = 160$	—	115	10 mA cm <sup>-2</sup> , 24 h, 100 mA cm <sup>-2</sup> , 24 h	42

## 4. Conclusions and perspectives

In this perspective, we systematically summarize the characteristics of structures and components obtained by different synthesis methods in Ni–Mo-based catalysts, and discuss their corresponding relationship with HER performance in detail. It can be found that most of the currently reported highly active Ni–Mo-based catalysts have alloy–oxide or alloy–hydroxide interface structures, as summarized in Tables 1 and 2. According to the logic of synthesis–structure–performance, we discuss the influence of the composition changes of two types of interface structures on HER activity. For the alloy–oxide interfaces, the Ni<sub>4</sub>Mo/MoO<sub>x</sub> (mixed oxide with the Mo ion valence from +4 to +6) composites produced by electrodeposition or hydrothermal combined with thermal reduction exhibit activities close to that of platinum. For only the alloy or oxide, their activities are significantly lower than that of composite structures, indicating the synergistic catalytic effect of binary components. Interestingly, the HER activity of MoO<sub>2</sub> in acidic and alkaline media is very close, indicating that MoO<sub>2</sub> can eliminate the influence of additional water dissociation under alkaline conditions. For the alloy–hydroxide interfaces, the activity of the Ni<sub>x</sub>Mo<sub>y</sub> alloy with different Ni/Mo ratios is greatly improved by constructing heterostructures with hydroxides such as Ni(OH)<sub>2</sub> or Co(OH)<sub>2</sub>. In particular, pure alloys obtained by metallurgy must be activated to produce a layer of mixed Ni(OH)<sub>2</sub> and MoO<sub>x</sub> on the surface to achieve high activity. Theoretical and experimental studies show that metallic Ni<sub>x</sub>Mo<sub>y</sub> alloys optimize the Gibbs free energy for hydrogen adsorption and MoO<sub>x</sub> or Ni(OH)<sub>2</sub> can weaken the HO–H bond of absorbed water to facilitate water dissociation in the hetero-interfaces. Therefore, it can be seen that the activity of Ni–Mo catalysts probably originates from the interfaces of alloy–oxide or alloy–hydroxide.

Although NiMo-based catalysts exhibit outstanding HER activity, the dissolvable nature of Mo in alkaline solution results in the poor stability of the Ni<sub>x</sub>Mo<sub>y</sub> alloy due to the lower oxidation potential of Mo than that of H<sub>2</sub>. Therefore, controlling the dissolution of Mo species is crucial to improve the stability of NiMo-based catalysts. At present, there are three strategies that have proved effective and can be tried to develop: (1) preparation of the pure phase NiMo alloy with high specific surface area by a metallurgical method; the most stable catalysts reported are almost all treated by high-temperature alloying. Compared with nanoalloys prepared by a low-temperature chemical method, high-temperature alloying is beneficial to improve the compactness and continuity of the catalyst. After electrochemical activation, a layer of Ni(OH)<sub>2</sub> or MoO<sub>x</sub> on the surface is formed, which can not only facilitate the dissociation of water but also provide a protective layer to prevent the dissolution of the Mo element. (2) The formed interface structure is coated with carbon or other conductive oxides or hydroxides; by adsorbing or depositing a layer of carbon precursor molecules on the surface and then carbonizing, an alloy/oxide or alloy/hydroxide interface structure uniformly coated with carbon layer can be obtained. An additional



protective layer will partially inhibit the dissolution of Mo. (3) Establishment of dynamic dissolution and re-adsorption equilibrium of Mo ions in electrolytes; the literature results reveal that  $\text{MoO}_4^{2-}$  can be easily dissolved in KOH electrolyte and re-adsorbed on the surface of the catalyst during the oxygen evolution reaction (OER), which delivers a promoting effect on OER performance.<sup>65</sup> Theoretical calculations show that the adsorption of the dimer  $\text{Mo}_2\text{O}_7^{2-}$  can promote the HER activity of metallic Ni.<sup>58</sup> Therefore, the dissolution of Mo will be effectively inhibited and the stability of NiMo-based catalysts will be greatly improved through reasonable control of the above three aspects.

## Data availability

All data in this perspective were cited from other references.

## Author contributions

Z.-L. W. and Y. Y. conceived the topic and structure of the paper. All authors reviewed and contributed to this paper.

## Conflicts of interest

There are no conflicts to declare.

## Acknowledgements

This work was supported by the National Natural Science Foundation of China (NSFC) [Grant number 22075201] and the JST-ERATO Yamauchi Materials SpaceTectonics Project (JPMJER2003). This work was performed in part at the Queensland node of the Australian National Fabrication Facility, a company established under the National Collaborative Research Infrastructure Strategy to provide nano and microfabrication facilities for Australia's researchers.

## References

- Q. Wang, M. Nakabayashi, T. Hisatomi, S. Sun, S. Akiyama, Z. Wang, Z. Pan, X. Xiao, T. Watanabe, T. Yamada, N. Shibata, T. Takata and K. Domen, *Nat. Mater.*, 2019, **18**, 827.
- J. H. Kim, D. Hansora, P. Sharma, J. W. Jang and J. S. Lee, *Chem. Soc. Rev.*, 2019, **48**, 1908–1971.
- J. D. Blakemore, R. H. Crabtree and G. W. Brudvig, *Chem. Rev.*, 2015, **115**, 12974–13005.
- H. Lyu, T. Hisatomi, Y. Goto, M. Yoshida, T. Higashi, M. Katayama, T. Takata, T. Minegishi, H. Nishiyama, T. Yamada, Y. Sakata, K. Asakura and K. Domen, *Chem. Sci.*, 2019, **10**, 3196.
- R. Subbaraman, D. Tripkovic, D. Strmcnik, K. C. Chang, M. Uchimura, A. P. Paulikas, V. Stamenkovic and N. M. Markovic, *Science*, 2011, **334**, 1256–1260.
- Y. Zhao, C. Chang, F. Teng, Y. Zhao, G. Chen, R. Shi, G. I. N. Waterhouse, W. Huang and T. Zhang, *Adv. Energy Mater.*, 2017, **7**, 1700005.
- T. Ling, T. Zhang, B. Ge, L. Han, L. Zheng, F. Lin, Z. Xu, W. Hu, X. Du, K. Davey and S. Qiao, *Adv. Mater.*, 2019, **31**, 1807771.
- H. Zhou, F. Yu, Q. Zhu, J. Sun, F. Qin, L. Yu, J. Bao, Y. Yu, S. Chen and Z. Ren, *Energy Environ. Sci.*, 2018, **11**, 2858–2864.
- Y. Chen, Y. Zhang, X. Zhang, T. Tang, H. Luo, S. Niu, Z. Dai, L. Wan and J. Hu, *Adv. Mater.*, 2017, **29**, 1703311.
- J. Zhang, T. Wang, P. Liu, Z. Liao, S. Liu, X. Zhuang, M. Chen, E. Zschech and X. Feng, *Nat. Commun.*, 2017, **8**, 15437.
- Z. Cao, Q. Chen, J. Zhang, H. Li, Y. Jiang, S. Shen, G. Fu, B. Lu, Z. Xie and L. Zheng, *Nat. Commun.*, 2017, **8**, 15131.
- C. Wei, Y. Sun, G. G. Scherer, A. C. Fisher, M. Sherburne, J. W. Ager and Z. J. Xu, *J. Am. Chem. Soc.*, 2020, **142**, 7765–7775.
- B. You, Y. Zhang, Y. Jiao, K. Davey and S. Z. Qiao, *Angew. Chem., Int. Ed.*, 2019, **58**, 11796–11800.
- T. Zhang, K. Yang, C. Wang, S. Li, Q. Zhang, X. Chang, J. Li, S. Li, S. Jia, J. Wang and L. Fu, *Adv. Energy Mater.*, 2018, **8**, 1801690.
- I. K. Mishra, H. Zhou, J. Sun, F. Qin, K. Dahal, J. Bao, S. Chen and Z. Ren, *Energy Environ. Sci.*, 2018, **11**, 2246–2252.
- F. Yu, H. Zhou, Y. Huang, J. Sun, F. Qin, J. Bao and Z. Ren, *Nat. Commun.*, 2018, **9**, 1–9.
- Z. Wang, J. Chen, E. Song, N. Wang, J. Dong, X. Zhang, P. M. Ajayan, W. Yao, C. Wang, J. Liu, J. Shen and M. Ye, *Nat. Commun.*, 2021, **12**, 5960.
- C. Lu, D. Tranca, J. Zhang, F. R. Hernandez, Y. Su, X. Zhuang, F. Zhang, G. Seifert and X. Feng, *ACS Nano*, 2017, **11**, 3933–3942.
- N. Han, K. R. Yang, Z. Lu, Y. Li, W. Xu, T. Gao, Z. Cai, Y. Zhang, V. S. Batista, W. Liu and X. Sun, *Nat. Commun.*, 2018, **9**, 924.
- Y. Luo, X. Li, X. Cai, X. Zou, F. Kang, H. M. Cheng and B. Liu, *ACS Nano*, 2018, **12**, 4565–4573.
- Y. Zang, S. Niu, Y. Wu, X. Zheng, J. Cai, J. Ye, Y. Xie, Y. Liu, J. Zhou, J. Zhu, X. Liu, G. Wang and Y. Qian, *Nat. Commun.*, 2019, **10**, 1217.
- Q. Wang, Z. L. Zhao, S. Dong, D. He, M. J. Lawrence, S. Han, C. Cai, S. Xiang, P. Rodriguez, B. Xiang, Z. Wang, Y. Liang and M. Gu, *Nano Energy*, 2018, **53**, 458–467.
- J. Zhang, T. Wang, P. Liu, Z. Liao, S. Liu, X. Zhuang, M. Chen, E. Zschech and X. Feng, *Nat. Commun.*, 2017, **8**, 15437.
- Z. Jin, L. Wang, T. Chen, J. Liang, Q. Zhang, W. Peng, Y. Li, F. Zhang and X. Fan, *Ind. Eng. Chem. Res.*, 2021, **60**, 5145–5150.
- P. Liu, W. Pan, R. Yao, L. Zhang, Q. Wu, F. Kang, H. Fan and C. Yang, *J. Mater. Chem. A*, 2022, **10**, 3760–3770.
- R. B. Patil, S. D. House, A. Mantri, J. C. Yang and J. R. McKone, *ACS Catal.*, 2020, **10**, 10390–10398.
- J. Park, H. Kim, G. H. Han, J. Kim, S. J. Yoo, H. J. Kim and S. H. Ahn, *J. Mater. Chem. A*, 2021, **9**, 3677–3684.
- M. Zhou, Y. Zeng, Y. Liu, Y. Sun, F. Lu, X. Zhang, R. Cao, Y. Xue, X. Zeng and Y. Wu, *Appl. Surf. Sci.*, 2022, **597**, 153597.
- M. Wang, H. Yang, J. Shi, Y. Chen, Y. Zhou, L. Wang, S. Di, X. Zhao, J. Zhong, T. Cheng, W. Zhou and Y. Li, *Angew. Chem.*, 2021, **133**, 5835–5841.





- 30 Z. Xie, Y. Zou, L. Deng and J. Jiang, *Adv. Mater. Interfaces*, 2020, **7**, 1901949.
- 31 J. Song, Y. Q. Jin, L. Zhang, P. Dong, J. Li, F. Xie, H. Zhang, J. Chen, Y. Jin, H. Meng and X. Sun, *Adv. Energy Mater.*, 2021, **11**, 2003511.
- 32 J. Cao, H. Li, R. Zhu, L. Ma, K. Zhou, Q. Wei and F. J. Luo, *J. Alloys Compd.*, 2020, **844**, 155382.
- 33 K. Kim, A. P. Tiwari, G. Hyun, Y. Yoon, H. Kim, J. Y. Park, K. An and S. J. Jeon, *J. Mater. Chem. A*, 2021, **9**, 7767–7773.
- 34 A. Nairan, P. Zou, C. Liang, J. Liu, D. Wu, P. Liu and C. Yang, *Adv. Funct. Mater.*, 2019, **29**, 1903747.
- 35 D. D. Rodene, E. H. Eladgham, R. B. Gupta, I. U. Arachchige and V. Tallapally, *ACS Appl. Energy Mater.*, 2019, **2**, 7112–7120.
- 36 L. Rößner, H. Schwarz, I. Veremchuk, R. Zerdoumi, T. Seyller and M. Armbrüster, *ACS Appl. Mater. Interfaces*, 2021, **13**, 23616–23626.
- 37 J. Wei, Q. Jia, B. Chen, H. Wang, X. Ke, Y. Dong, G. Liu and Y. Peng, *J. Alloys Compd.*, 2021, **876**, 160152.
- 38 M. Fang, W. Gao, G. Dong, Z. Xia, S. Yip, Y. Qin, Y. Qu and J. C. Ho, *Nano Energy*, 2016, **27**, 247–254.
- 39 X. Lu, M. Cai, J. Huang and C. Xu, *J. Colloid Interface Sci.*, 2020, **562**, 307–312.
- 40 M. Gong, D. Y. Wang, C. C. Chen, B. J. Hwang and H. Dai, *Nano Res.*, 2016, **9**, 28–46.
- 41 C. Li, J. Wang, Y. Wang, J. Li, Z. Yao and Z. Jiang, *ChemistrySelect*, 2020, **5**, 6774–6779.
- 42 M. Zhao, E. Li, N. Deng, Y. Hu, C. Li, B. Li, F. Li, Z. Guo and J. He, *Renewable Energy*, 2022, **191**, 370–379.
- 43 Y. Zhou, T. Lin, X. Luo, Z. Yan, J. Wu, J. Wang and Y. Shen, *J. Catal.*, 2020, **388**, 122–129.
- 44 J. M. Jaksic, M. V. Vojnovic and N. V. Krstajic, *Electrochim. Acta*, 2000, **45**, 4151–4158.
- 45 J. G. Highfield, E. Claude and K. Oguro, *Electrochim. Acta*, 1999, **44**, 2805–2814.
- 46 A. Kawashima, E. Akiyama, H. Habazaki and K. Hashimoto, *Mater. Sci. Eng., A*, 1997, **226**, 905–909.
- 47 J. Bau, S. Kozlov, L. Azofra, S. Ould-Chikh, A. Emwas, H. Idriss, L. Cavallo and K. Takanebe, *ACS Catal.*, 2020, **10**, 12858–12866.
- 48 N. Dubouis and A. Grimaud, *Chem. Sci.*, 2019, **10**, 9165–9181.
- 49 L. Peng, M. Liao, X. Zheng, Y. Nie, L. Zhang, M. Wang, R. Xiang, J. Wang, L. Li and Z. Wei, *Chem. Sci.*, 2020, **11**, 2487–2493.
- 50 Y. Luo, Z. Zhang, F. Yang, J. Li, Z. Liu, W. Ren, S. Zhang and B. Liu, *Energy Environ. Sci.*, 2021, **14**, 4610–4619.
- 51 Y. An, X. Long, M. Ma, J. Hu, H. Lin, D. Zhou, Z. Xing, B. Huang and S. Yang, *Adv. Energy Mater.*, 2019, **9**, 1901454.
- 52 Y. Y. Chen, Y. Zhang, X. Zhang, T. Tang, H. Luo, S. Niu, Z. H. Dai, L. J. Wan and J. S. Hu, *Adv. Mater.*, 2017, **29**, 1703311.
- 53 Y. Zhou, M. Luo, W. Zhang, Z. Zhang, X. Meng, X. Shen, H. Liu, M. Zhou and X. Zeng, *ACS Appl. Mater. Interfaces*, 2019, **11**, 21998–22004.
- 54 J. Hou, Y. Wu, S. Cao, Y. Sun and L. Sun, *Small*, 2017, **13**, 1702018.
- 55 Y. Zhang, G. Yan, Y. Shi, H. Tan and Y. Li, *New J. Chem.*, 2021, **45**, 10890–10896.
- 56 L. Yang, H. Liu, Z. Zhou, Y. Chen, G. Xiong, L. Zeng, Y. Deng, X. Zhang, H. Liu and W. Zho, *ACS Appl. Mater. Interfaces*, 2020, **12**, 33785–33794.
- 57 V. Jothi, K. Karuppasamy, T. Maiyalagan, H. Rajan, C. Jung and S. Yi, *Adv. Energy Mater.*, 2020, **10**, 1904020.
- 58 W. Du, Y. Shi, W. Zhou, Y. Yu and B. Zhang, *Angew. Chem., Int. Ed.*, 2021, **60**, 7051–7055.
- 59 X. Lu, M. Cai, Z. Zou, J. Huang and C. Xu, *Chem. Commun.*, 2020, **56**, 1729–1732.
- 60 W. Zhang, Y. Tang, L. Yu and X. Y. Yu, *Appl. Catal., B*, 2020, **260**, 118154.
- 61 Q. Zhang, W. Xiao, W. H. Guo, Y. X. Yang, J. L. Lei, H. Q. Luo and N. B. Li, *Adv. Funct. Mater.*, 2021, **31**, 2102117.
- 62 P. Shang, Z. Ye, Y. Ding, Z. Zhu, X. Peng, G. Ma and D. Li, *ACS Sustainable Chem. Eng.*, 2020, **8**, 10664–10672.
- 63 F. Razmjooei, T. Liu, D. A. Azevedo, E. Hadjixenophontos, R. Reissner, G. Schiller, S. A. Ansar and K. A. Friedrich, *Sci. Rep.*, 2020, **10**, 10948.
- 64 R. Subbaraman, D. Tripkovic, K. Chang, D. Strmcnik, A. Paulikas, P. Hirunsit, M. Chan, J. Greeley, V. Stamenkovic and N. Markovic, *Nat. Mater.*, 2012, **11**, 550–557.
- 65 H. Liao, X. Zhang, S. Niu, P. Tan, K. Chen, Y. Liu, G. Wang, M. Liu and J. Pan, *Appl. Catal., B*, 2022, **307**, 121150.

