

# Green Chemistry

Accepted Manuscript



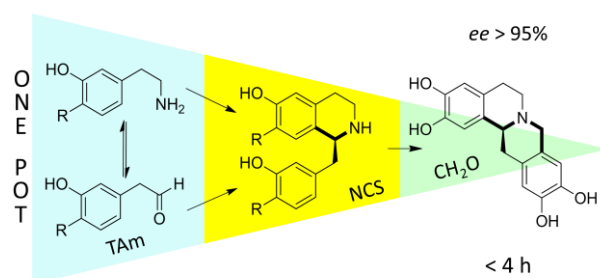
This is an *Accepted Manuscript*, which has been through the Royal Society of Chemistry peer review process and has been accepted for publication.

*Accepted Manuscripts* are published online shortly after acceptance, before technical editing, formatting and proof reading. Using this free service, authors can make their results available to the community, in citable form, before we publish the edited article. We will replace this *Accepted Manuscript* with the edited and formatted *Advance Article* as soon as it is available.

You can find more information about *Accepted Manuscripts* in the [Information for Authors](#).

Please note that technical editing may introduce minor changes to the text and/or graphics, which may alter content. The journal's standard [Terms & Conditions](#) and the [Ethical guidelines](#) still apply. In no event shall the Royal Society of Chemistry be held responsible for any errors or omissions in this *Accepted Manuscript* or any consequences arising from the use of any information it contains.

One-pot, one-substrate, triangular chemoenzymatic cascades featuring transaminase (TAm) and norcoclaurine synthase (NCS) enables the formation of (*S*)-benzylisoquinoline and (*S*)-tetrahydroprotoberberine alkaloids.



## COMMUNICATION

## One-pot triangular chemoenzymatic cascades for the syntheses of chiral alkaloids from dopamine

Cite this: DOI: 10.1039/x0xx00000x

B. R. Lichman<sup>a</sup>, E. D. Lamming<sup>b</sup>, T. Pesnot<sup>b</sup>, J. M. Smith<sup>a</sup>, H. C. Hailes<sup>b\*</sup> and J. M. Ward<sup>a\*</sup>Received 00th January 2012,  
Accepted 00th January 2012

DOI: 10.1039/x0xx00000x

www.rsc.org/

**We describe novel chemoenzymatic routes to (*S*)-benzylisoquinoline and (*S*)-tetrahydroprotoberberine alkaloids using the enzymes transaminase (TAm) and norcoclaurine synthase (NCS) in a one-pot, one-substrate ‘triangular’ cascade. Employment of up to two C-C bond forming steps allows for the rapid generation of molecular complexity under mild conditions.**

### Introduction

In order to minimise waste products and reduce the usage of finite resources, chemistry must find ‘green’ alternatives to traditional synthetic methods.<sup>1</sup> The employment of enzymes as catalysts offers significant potential in this regard as enzymes often demonstrate exquisite chemo- and enantio-selectivity, and operate in mild conditions.<sup>2</sup> Furthermore, using enzymes in one-pot cascades can enable the formation of highly complex compounds from cheap starting materials, frequently without the requirement of intermediate isolation or functional group protection strategies.<sup>3</sup>

Benzylisoquinoline alkaloids (BIAs) are a large, diverse family of natural products found in both plants<sup>4</sup> and animals<sup>5</sup>. Many BIAs have pharmacological activities — these include analgesic<sup>6</sup>, antimicrobial<sup>7</sup> and antitumor<sup>8</sup> effects — and consequently are common synthetic targets.<sup>9</sup> A key step in the synthesis of many of these compounds is the formation of the tetrahydroisoquinoline (THIQ) moiety via a Pictet-Spengler condensation.<sup>10</sup> Recently, a mild one-pot biomimetic approach to the formation of THIQs was developed, using phosphate buffer as a catalyst.<sup>11</sup> There has also been recent progress made in the enzymatic synthesis of diverse chiral THIQs using the plant enzyme norcoclaurine synthase (NCS).<sup>12</sup>

Norlaudanoline (tetrahydropapaveroline) **1a** is a BIA found in mammals: it is the precursor to ‘endogenous’ morphine<sup>5</sup>, and also has a number of neuronal effects including roles in Parkinson’s disease<sup>13</sup> and drug addiction<sup>14</sup>. Synthetically, **1a** is a versatile BIA precursor, and consequently it has been employed in synthetic biology/metabolic engineering routes to various BIAs.<sup>15</sup> BIA **1a** can be accessed

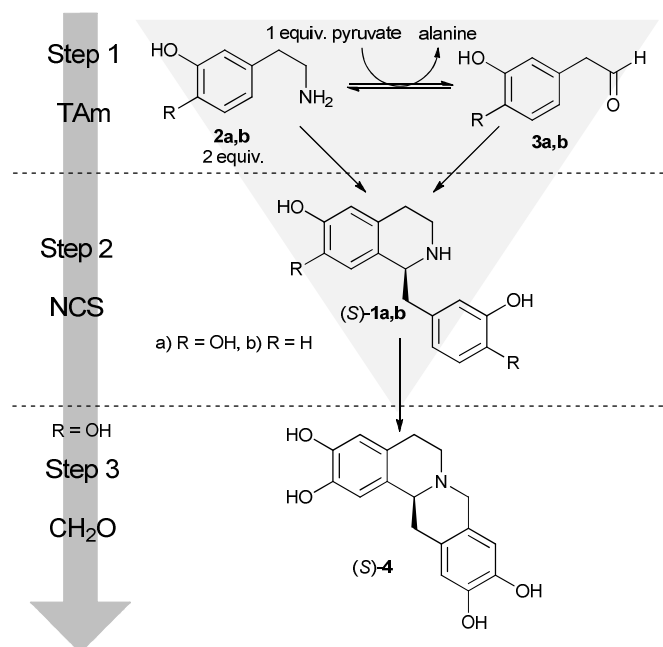
by a Pictet-Spengler condensation between dopamine **2a** and 3,4-dihydroxyphenylacetaldehyde **3a**.<sup>16</sup>

Tetrahydroprotoberberine alkaloids (THPBs, berbines) are a subgroup of the BIAs found in both plants and animals, and include compounds such as canadine<sup>17</sup> and spinosine.<sup>18a</sup> The THPB moiety can be accessed from **1a** via a Pictet-Spengler reaction with formaldehyde.<sup>18</sup> The two compounds directly formed by this reaction (**4** and **5**) have been shown to have potential in cancer chemotherapeutics.<sup>19</sup> The regioselectivity of this chemical Pictet-Spengler reaction (major product: 10,11-dihydroxy **4**) contrasts with the regioselectivity of the plant berberine-bridge enzyme (BBE), which typically forms 9,10-dihydroxy-THPBs from a *N*-methylated BIA precursor.<sup>20</sup> Thus chemical approaches to THPBs provide a complementary method to the reported BBE approach.

### Triangular cascade design

In this work, we present one-pot two-enzyme one-substrate syntheses of (*S*)-**1a** and (*S*)-**1b** using the enzymes transaminase (TAm) and NCS. The reaction involves *in situ* generation and utilisation of reactive aldehyde species. We also demonstrate a one-pot, two-enzyme, three-step chemoenzymatic synthesis of the THPB (*S*)-**4**. This synthesis uses the same cascade route as for (*S*)-**1a**, but involves the sequential addition of formaldehyde to trigger a second Pictet-Spengler cyclisation (Scheme 1).

Previous attempts to achieve this type of cascade *in vitro* and *in vivo* have utilised a monoamine oxidase (MAO) as the catalyst in the first step, converting **2a** to **3a**. Several MAO approaches have focused on forming *rac*-**1a** through a spontaneous Pictet-Spengler reaction (typically phosphate catalysis).<sup>16</sup> A number of *in vivo* metabolic cascades forming (*S*)-reticuline report the use of recombinant NCS as the Pictet-Spengler catalyst. However, it is not clear that NCS is active in these systems: any chirality reported seems to be the result of (*S*)-selective enzymes downstream of NCS.<sup>15a-d</sup>



**Scheme 1.** Overview of the biocatalytic and non-enzymatic cascades presented in this work, including the 'triangular' cascade.

Here, we employ a TAM for the conversion of **2a** to **3a** (step 1), which then combine to form **1a** (step 2). TAMs have an advantage over MAOs in this system: the conversion of **2a** to **3a** with TAMs can be controlled by stoichiometrically limiting the quantity of co-substrate (in this instance, pyruvate) available. Furthermore, we avoid the problems associated with driving TAM reactions to completion, as the Pictet-Spengler reaction removes equal quantities of molecules from both sides

of the TAM equilibrium. This three-sided 'triangular' cascade design results in a system with high atom economy.<sup>3</sup>

## Results and discussion

The first step towards establishing the one-pot cascade system was the identification of a TAM with good activity towards **2a**. The screening reaction was conducted in phosphate buffer, which enabled the *in situ* formation of *rac*-**1a** from **2a** and **3a** (Table 1). The screen identified two TAMs with activity towards **2a** at pH 7.5: CV2025 (*Chromobacterium violaceum*)<sup>21</sup> and PP\_3718 (*Pseudomonas putida*), providing 21% and 15% conversion of **1a** from 50 mM **2a** respectively. Trace activities were found in PP\_0596 (*P. putida*), SaV\_2612 (*Streptomyces avermitilis*) and VF\_JS17 (*Vibrio fluvialis*)<sup>22</sup> (Table 1, Supplementary Figure S1). We selected the best performing TAM, CV2025, for use in further studies.

In order to form *(S)*-**1a** from **2a** two aspects of the previous TAM screening reaction conditions were modified. Changing the buffer from phosphate to HEPES removed most of the background chemical reaction<sup>11</sup> and adding purified  $\Delta$ 29TfNCS enabled catalytic formation of the chiral product *(S)*-**1a** from **2a**. Optimum reaction conditions were determined by varying the concentrations of **2a**, NCS and TAM present. A balance between reaction components was crucial to ensure the rates of the two steps were matched; a build-up of **3a** would cause an increase in undesirable side-reactions including the non-enzymatic Pictet-Spengler condensation, which would reduce the final enantiomeric excess (*ee*) of the product.

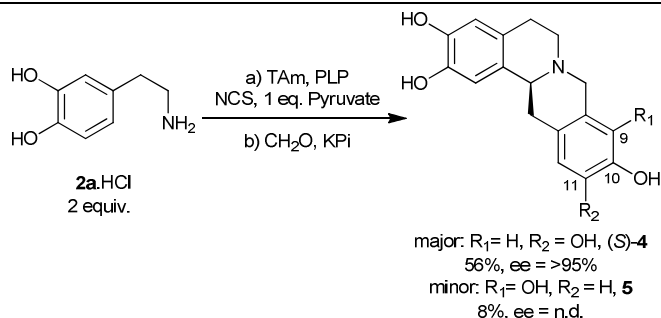
**Table 1.** TAM mediated synthesis of *rac*-**1a** from **2a**.<sup>a</sup>

Entry	TAM	Organism	Uniprot entry name	Gene name	Conv. (%) <sup>b</sup>
1	Empty vector				n.d. <sup>c</sup>
2	BSU_09260	<i>Bacillus subtilis</i>	YHXA_BACSU	yhxA	n.d.
3	CV_2025 <sup>21</sup>	<i>Chromobacterium violaceum</i>	Q7NWX4_CHRVO	CV_2025	21
4	Dgeo_1416	<i>Deinococcus geothermalis</i>	Q1IYH3_DEIGD	argD/lysJ	n.d.
5	KPN_00255	<i>Klebsiella pneumoniae</i>	A6T537_KLEP7	gabT	n.d.
6	PP_0596	<i>Pseudomonas putida</i>	Q88Q98_PSEPK	PP_0596	Trace
7	PP_3718	<i>Pseudomonas putida</i>	Q88GK3_PSEPK	PP_3718	14
8	SaV_2612	<i>Streptomyces avermitilis</i>	Q82JZ2_STRAW	SAV_2612	Trace
9	SaV_4551	<i>Streptomyces avermitilis</i>	Q82ER2_STRAW	SaV_4551	n.d.
10	VF_JS17 <sup>22</sup>	<i>Vibrio fluvialis</i>	F2XBU9_VIBFL	JS17	Trace

<sup>a</sup> 50 mM **2a**, 25 mM pyruvate, 1 mM PLP, 10% v.v<sup>-1</sup> TAM, 37 °C, 4 h. <sup>b</sup> Concentration of *rac*-**1a**, determined by analytical HPLC. <sup>c</sup> n.d. = not detected. See Supplementary Figure S1 for reaction time course.

BIA (*S*)-**1a** was produced from **2a** with very good conversions and excellent enantioselectivity. In all cases, an increase in TAM concentration resulted in a greater consumption of **2a**, generally leading to an increase in product formation (Table 2). However, at lower concentrations of **2a** (20 mM) the use of 20% v.v<sup>-1</sup> CV2025 lysate, rather than 30%, was optimal. The enantioselectivity was excellent under all conditions. In terms of conversion, the effect of NCS concentration was more apparent with higher concentrations of dopamine. The best conditions identified were those with 20 mM **2a**, 500 μg.mL<sup>-1</sup> NCS and 20% v.v<sup>-1</sup> CV2025 lysate, which provided an 87% conversion of (*S*)-**1a** from **2a** with an *ee* of 99%.

**Table 2:** One pot synthesis of (*S*)-BIAs<sup>a</sup>.



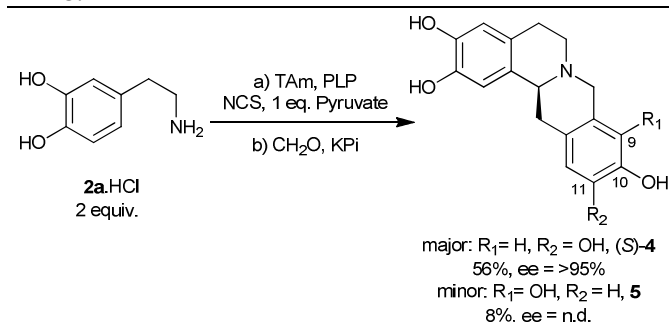
Amine	CV2025	NCS	Conv.	<i>ee</i>
[mM]	(v.v <sup>-1</sup> ) [%]	[μg.mL <sup>-1</sup> ]	[%] <sup>b</sup>	[%] <sup>c</sup>
<b>2a</b>	20	100	74 (74)	99
<b>2a</b>	20	100	86 (89)	99
<b>2a</b>	20	100	82 (93)	99
<b>2a</b>	20	500	77 (82)	99
<b>2a</b>	20	500	87 (92)	99
<b>2a</b>	20	500	84 (95)	98
<b>2a</b>	50	100	36 (42)	98
<b>2a</b>	50	100	55 (66)	97
<b>2a</b>	50	100	70 (78)	99
<b>2a</b>	50	500	42 (48)	98
<b>2a</b>	50	500	65 (73)	98
<b>2a</b>	50	500	72 (85)	96
<b>2b</b>	20	500	56 (57)	90

<sup>a</sup> General reaction conditions: 2 equivalents **2a** or **2b**, 1 equivalent pyruvate, purified Δ29TfNCS and CV2025 lysate, 50 mM HEPES pH 7.5, 37 °C, 3 h. <sup>b</sup> Determined by analytical HPLC. Conversions in brackets refer to depletion of primary amine. <sup>c</sup> Determined by chiral HPLC of the crude product.

To demonstrate the versatility of this system, it was used to synthesise (*S*)-**1b** from 2-(3-hydroxyphenyl)ethylamine **2b**. The *para*-hydroxyl group of **2a** is not required for the Pictet-Spengler condensation, and thus **2b** is a suitable substrate for NCS.<sup>12b</sup> Using the optimum conditions determined previously for **2a**, (*S*)-**1b** was formed from **2b** with a fair conversion of 56% and a high *ee* of 90%. The lower conversion and *ee* compared to (*S*)-**1a** is possibly reflective of a poorer affinity of TfNCS towards for **2b** compared to the natural substrate **2a**.

In order to form THPBs (*S*)-**4** and (*S*)-**5**, a one-pot synthesis of (*S*)-**1a** was conducted (as described above) and formaldehyde was added to the reaction after 3 hours. This triggered the second Pictet-Spengler condensation and resulted in the formation of (*S*)-**4** and (*S*)-**5** in a ratio of approximately 7:1 (Scheme 2). This cascade features 2 enzymes, 3 steps and the formation of 4 bonds, including 2 C-C bonds. The overall reaction occurred with good conversion: the second Pictet-Spengler step alone (from (*S*)-**1a**) provided 74% conversion

(64% and 9% for (*S*)-**4** and (*S*)-**5** respectively), which translates as an overall 64% conversion (56% and 8%) from **2a**. As the chirality of the system is established by NCS, the subsequent addition of formaldehyde does not affect the *ee*: only the (*S*)-enantiomer of the major product **4** was observed by chiral HPLC.



**Scheme 2.** One-pot chemoenzymatic synthesis of (*S*)-**4** and (*S*)-**5**. Reaction conditions: (a) 20 mM **2**, 10 mM sodium pyruvate, 500 μg.mL<sup>-1</sup> NCS and 20% v.v<sup>-1</sup> CV2025 lysate, 50 mM HEPES pH 7.5, 37 °C, 3 h. (b) 40 mM formaldehyde, 1 M sodium phosphate, pH 6, 30 min, 37 °C.

The major regioisomer **4** formed by this method has 10,11-dihydroxy regiochemistry. BBE, a plant enzyme which catalyses the formation of (*S*)-THPBs *en route* to berberine, typically forms products with 9,10-dihydroxy regioselectivity.<sup>20</sup> This enzyme has recently been used in a novel *in vitro* deracemisation cascade to produce (*S*)-THPBs.<sup>20b</sup> The synthesis presented here and the BBE catalysed cascade can be seen as complementary methods, providing efficient chemoenzymatic routes to 10,11-dihydroxy-(*S*)-THPBs and 9,10-dihydroxy-(*S*)-THPBs respectively.

Finally, to demonstrate the preparative potential of our cascades, we performed syntheses of (*S*)-**1a** and (*S*)-**4** on a 0.5 mmole scale. The concentrations of components in these cascades were the same as those used in the micro-scale cascades (Scheme 2). The synthesis scaled with no complications: conversion of **2a** to (*S*)-**1a** was achieved in 2 hours with 86% conversion and 62% isolated yield (>95% *ee*). (*S*)-**4** was formed from **2a** in 2.5 hours with 47% conversion and 42% isolated yield (>95% *ee*). The identities of these products were verified by NMR.

## Conclusions

In summary, we have developed one-pot syntheses of chiral alkaloids, using the enzymes TAM and NCS in a 'triangular' cascade. BIA (*S*)-**1a** was formed from **2a** with very good conversion and excellent enantioselectivity in only 2 hours. (*S*)-**1b** was formed in a similar manner with fair conversion and a high *ee*. A chemical extension to the cascade enabled the formation of (*S*)-**4** in a one-pot three-step reaction from the low-cost starting material **2a**, again with excellent enantioselectivity and an overall reaction time of less than 3 hours.

The cascades presented here exhibit high atom economy, the *in situ* generation of reactive intermediates, and the rapid accumulation of molecular complexity through C-C bond forming steps. Overall, these syntheses demonstrate the remarkable potential of *in vitro* biocatalysis for the formation of complex chiral compounds.

We gratefully acknowledge the Wellcome Trust for studentship funding to B. R. L., EPSRC and GlaxoSmithKline for studentship funding to E. D. L., and the Biotechnology and Biological Sciences Research Council (BBSRC) (BB/G014426/1) for funding T. P.

#### Notes and references

- <sup>a</sup> Department of Biochemical Engineering, University College London, Bernard Katz Building, Gordon Street, London, WC1H 0AH, UK. E-mail: j.ward@ucl.ac.uk
- <sup>b</sup> Department of Chemistry, University College London, Christopher-Ingold Building, 20 Gordon Street, London, WC1H 0AJ, UK. E-mail: h.c.hailes@ucl.ac.uk
- † Electronic Supplementary Information (ESI) available: [details of any supplementary information available should be included here]. See DOI: 10.1039/b000000x/
- (a) J. H. Clark, *Green Chem.* 1999, **1**, 1–8; (b) R. A. Sheldon, *Pure Appl. Chem.* 2000, **72**, 1233–1246.
  - B. M. Nestl, S. C. Hammer, B. A. Nebel, B. Hauer, *Angew. Chem. Int. Ed.* 2014, **53**, 3070–3095
  - For reviews see: (a) E. Ricca, B. Brucher, J. H. Schrittwieser, *Adv. Synth. Catal.* 2011, **353**, 2239–2262; (b) R. C. Simon, N. Richter, E. Busto, W. Kroutil, *ACS Catal.* 2014, **4**, 129–143.
  - J. M. Hagel, P. J. Facchini, *Plant Cell Physiol.* 2013, **54**, 647–672.
  - (a) C. Poeaknapo, J. Schmidt, M. Brandsch, B. Dräger, M. H. Zenk, *Proc. Natl. Acad. Sci. U. S. A.* 2004, **101**, 14091–14096; (b) C. Boettcher, M. Fellermeier, C. Boettcher, B. Dräger, M. H. Zenk, *Proc. Natl. Acad. Sci. U. S. A.* 2005, **102**, 8495–8500; (c) N. Grobe, M. Lamshöft, R. G. Orth, B. Dräger, T. M. Kutchan, M. H. Zenk, M. Spiteller, *Proc. Natl. Acad. Sci. U. S. A.* 2010, **107**, 8147–8152.
  - A. J. Goodman, B. Le Bourdonnec, R. E. Dolle, *ChemMedChem* 2007, **2**, 1552–1570.
  - K. Iwasa, M. Moriyasu, Y. Tachibana, H. Kim, Y. Wataya, W. Wiegrebe, K. F. Bastow, L. M. Cosentino, M. Kozuka, K.-H. Lee, *Bioorg. Med. Chem.* 2001, **9**, 2871–2884.
  - P. Jabbarzadeh Kaboli, A. Rahmat, P. Ismail, K.-H. Ling, *Eur. J. Pharmacol.* 2014, **740**, 584–595.
  - M. Chrzanowska, M. D. Rozwadowska, *Chem. Rev.* 2004, **104**, 3341–3370.
  - J. Stöckigt, A. P. Antonchick, F. Wu, H. Waldmann, *Angew. Chem. Int. Ed.* 2011, **50**, 8538–64
  - T. Pesnot, M. C. Gershater, J. M. Ward, H. C. Hailes, *Chem. Commun.* 2011, **47**, 3242–3244.
  - (a) A. Bonamore, I. Rovardi, F. Gasparrini, P. Baiocco, M. Barba, C. Molinaro, B. Botta, A. Boffi, A. Macone, *Green Chem.* 2010, **12**, 1623–1627; (b) T. Pesnot, M. C. Gershater, J. M. Ward, H. C. Hailes, *Adv. Synth. Catal.* 2012, **354**, 2997–3008; (c) B. M. Ruff, S. Bräse, S. E. O'Connor, *Tetrahedron Lett.* 2012, **53**, 1071–1074; (d) M. Nishihachijo, Y. Hirai, S. Kawano, A. Nishiyama, H. Minami, T. Katayama, Y. Yasohara, F. Sato, H. Kumagai, *Biosci. Biotechnol. Biochem.* 2014, **78**, 701–707; (e) J. J. Maresh, S. O. Crowe, A. a. Ralko, M. D. Aparece, C. M. Murphy, M. Krzeszowiec, M. W. Mullowney, *Tetrahedron Lett.* 2014, **55**, 5047–5051.
  - M. A. Collins, *Neurotoxicology* 2004, **25**, 117–120.
  - L. Yao, P. Fan, M. Arolfo, Z. Jiang, M. F. Olive, J. Zablocki, H.-L. Sun, N. Chu, J. Lee, H.-Y. Kim, K. Leung, J. Shryock, B. Blackburn, I. Diamond, *Nat. Med.* 2010, **16**, 1024–1028.
  - J. Name.*, 2012, **00**, 1–3

- For examples which synthesise norlaudanoline *in situ*: (a) H. Minami, J.-S. Kim, N. Ikezawa, T. Takemura, T. Katayama, H. Kumagai, F. Sato, *Proc. Natl. Acad. Sci. U. S. A.* 2008, **105**, 7393–7398; (b) A. Nakagawa, H. Minami, J.-S. Kim, T. Koyanagi, T. Katayama, F. Sato, H. Kumagai, *Nat. Commun.* 2011, **2**, 326, DOI: 10.1038/ncomms1327; (c) A. Nakagawa, H. Minami, J.-S. Kim, T. Koyanagi, T. Katayama, F. Sato, H. Kumagai, *Bioeng. Bugs* 2012, **3**, 49–53; (d) J.-S. Kim, A. Nakagawa, Y. Yamazaki, E. Matsumura, T. Koyanagi, H. Minami, T. Katayama, F. Sato, H. Kumagai, *Biosci. Biotechnol. Biochem.* 2013, **77**, 2166–2168; examples which use racemic norlaudanoline as a feedstock: (e) K. M. Hawkins, C. D. Smolke, *Nat. Chem. Biol.* 2008, **4**, 564–573; (f) E. Fossati, A. Ekins, L. Narcross, Y. Zhu, J.-P. Falgueyret, G. A. W. Beaudoin, P. J. Facchini, V. J. J. Martin, *Nat. Commun.* 2014, **5**, 3283, DOI: 10.1038/ncomms4283.
- (a) P. Holtz, K. Stock, E. Westermann, *Nature* 1964, **203**, 656–658; (b) L. K. Hoover, M. Moo-Young, R. L. Legge, *Biotechnol. Bioeng.* 1991, **38**, 1029–1033; (c) A. Nakagawa, C. Matsuzaki, E. Matsumura, T. Koyanagi, T. Katayama, K. Yamamoto, F. Sato, H. Kumagai, H. Minami, *Sci. Rep.*, 2014, **4**, 6695, DOI: 10.1038/srep06695.
- E. F. Queiroz, F. Roblot, A. Cavé, M. de Q. Paulo, A. Fournet, *J. Nat. Prod.* 1996, **7**, 438–440.
- (a) K. Iwasa, W. Cui, T. Takahashi, Y. Nishiyama, M. Kamigauchi, J. Koyama, A. Takeuchi, M. Moriyasu, K. Takeda, *J. Nat. Prod.* 2010, **73**, 115–122; (b) K. D. McMurtrey, L. R. Meyerson, J. L. Cashaw, V. E. Davis, *J. Org. Chem.* 1984, **49**, 947–948.
- W. Cui, K. Iwasa, H. Tokuda, A. Kashihara, Y. Mitani, T. Hasegawa, Y. Nishiyama, M. Moriyasu, H. Nishino, M. Hanaoka, C. Mukai, K. Takeda, *Phytochemistry* 2006, **67**, 70–79.
- (a) J. H. Schrittwieser, V. Resch, S. Wallner, W.-D. Lienhart, J. H. Sattler, J. Resch, P. Macheroux, W. Kroutil, *J. Org. Chem.* 2011, **76**, 6703–6714; (b) J. H. Schrittwieser, B. Groenendaal, V. Resch, D. Ghislieri, S. Wallner, E.-M. Fischereder, E. Fuchs, B. Grischek, J. H. Sattler, P. Macheroux, N. J. Turner, W. Kroutil, *Angew. Chem. Int. Ed.* 2014, **53**, 3731–3734.
- U. Kaulmann, K. Smithies, M. E. B. Smith, H. C. Hailes, J. M. Ward, *Enzyme Microb. Technol.* 2007, **41**, 628–637.
- J.-S. Shin, H. Yun, J.-W. Jang, I. Park, B.-G. Kim, *Appl. Microbiol. Biotechnol.* 2003, **61**, 463–471.