



Cite this: *J. Anal. At. Spectrom.*, 2023, **38**, 1135

Characterisation of gas cell reactions for 70+ elements using N₂O for ICP tandem mass spectrometry measurements†

Shaun T. Lancaster, *^a Thomas Prohaska ^{ab} and Johanna Irrgeher ^{ab}

One widely utilised method to reduce spectral interferences for measurements using inductively coupled plasma mass spectrometry (ICP-MS) is to employ the use of a reaction cell gas. Nitrous oxide (N₂O) is a highly reactive gas typically used for mass-shifting only target analytes to a higher mass-to-charge ratio with increased sensitivity (e.g. +16, +32, +48 amu for monoxide, dioxide, and trioxide product ions respectively). Traditionally, the use of N₂O was limited to selected applications due to the creation of new interferences that also interfere with the detected masses of interest. However, with the advent of inductively coupled plasma tandem mass spectrometry (ICP-MS/MS), the use of N₂O has gained more traction, with a growing number of publications in recent years. Here, a comprehensive study of the use of N₂O for the determination of 73 elements has been conducted, with a comparison to the most widely used mass-shift method using oxygen (O₂) as a reaction gas. In total, 59 elements showed improved sensitivity when performing mass-shift with N₂O compared to O₂, with 8 elements showing no reaction with either gas. Additionally, N₂O demonstrated a collisional focusing effect for 36 elements when measuring on-mass. This effect was not observed using O₂. Monitoring asymmetric charge transfer reactions with N₂O highlighted 14 elements, primarily non-metals and semi-metals, that enter the gas cell as metastable ions and could be used as an alternative mass-shift option. The results from this study highlight the high versatility of N₂O as a reaction cell gas for routine ICP-MS/MS measurements.

Received 19th January 2023
 Accepted 4th April 2023

DOI: 10.1039/d3ja00025g

rsc.li/jaas

Introduction

Overcoming spectral interferences in inductively coupled plasma mass spectrometry (ICP-MS) measurements is of utmost importance when striving to achieve reliable data. One widely utilised method to obtain interference free determinations is to employ the use of a reaction cell gas. A multitude of different gases have been used, summarised in detail previously.^{1–4} In the cell, two possible reactions can occur: atom transfer and asymmetric charge transfer. With the advent of tandem mass spectrometry (MS/MS), only interferences with the same mass-to-charge ratio (*m/z*) as the target analyte remain of concern as all other ions (that can potentially become interferences depending on the reactions employed) are removed by a mass filter before entering the reaction cell.

Resolution of spectral interferences by atom transfer is often achieved in two ways: atom transfer to the analyte or atom transfer to the interference. In the former case, the most

common approach is to perform the reaction of the target analyte with oxygen (O₂),³ such that M⁺ + O₂ → MO⁺ + O. This is known as a “mass-shift” determination, where the analyte, M, is detected at a higher *m/z* (in this case +16 amu). Conversely, mass-shifting the interference allows the target analyte to be analysed at the same *m/z* as it enters the cell – known as an “on-mass” determination. Other gases used for atom transfer reactions include nitrous oxide (N₂O),^{5–8} carbon dioxide,⁹ sulphur hexafluoride,¹⁰ and methyl fluoride.^{11,12}

Asymmetric charge transfer reactions remove interferences by transferring the charge of an interference to the reaction gas (e.g. ammonia (NH₃)), such that M⁺ + NH₃ → M + NH₃⁺. Due to the vacuum conditions of the gas cell, only exothermic reactions can proceed. Therefore, for charge transfer to occur, the ionisation energy of the reaction gas must be lower than that of the interfering ion. The use of NH₃ is a widely-used option^{2,13} due to its low ionisation energy (10.070 eV)¹⁴ as well as its reactivity to form clusters with selected elements.⁴ Other gases used for charge transfer reactions include hydrogen, xenon, methane, and nitrogen.¹

The application of a cell gas can also lead to a collisional focusing effect, first observed by Douglas and French.¹⁵ This effect gives an apparent increase in sensitivity with increased gas pressures due to loss of radial kinetic energy. This focuses the ions to the minimum of the effective potential of the

^aDepartment of General, Analytical and Physical Chemistry, Chair of General and Analytical Chemistry, Montanuniversität Leoben, Leoben, Austria. E-mail: shaun.lancaster@unileoben.ac.at

^bDepartment of Physics and Astronomy, University of Calgary, Calgary, Canada

† Electronic supplementary information (ESI) available. See DOI: <https://doi.org/10.1039/d3ja00025g>



quadrupole, allowing for increased transmission through the exit aperture.¹⁶ This, in turn, can lead to increased sensitivity of the target analyte. Gases that have previously demonstrated a collisional focusing effect include hydrogen,^{12,17} helium,^{1,18,19} and NH₃.^{20,21}

While the choice of reaction gas is an important consideration for removal of interferences, differences in the types of reaction cells used have shown to have a significant contribution to the removal of interferences. Koppenaal *et al.* summarized that quadrupole-based reaction cells allow for effective mass-selective ejection of unwanted precursor and product ions but lower transmission and higher scattering losses. In contrast to this, multipole-based reaction cells allow for higher transmission but lower selectivity – thus generally requiring more selective reaction gases.¹ Therefore, although both cell designs give good analytical performance, it should be noted that differences may be seen between instruments with different types of gas cells.

While O₂ and NH₃ have been successfully used with ICP-MS/MS determinations, they are not without their disadvantages. NH₃ is a corrosive and toxic gas that is not universally compatible with every gas cell and O₂ only has a selective range of elements that react readily enough to benefit from mass-shift. N₂O is an alternative reaction gas to form oxide species. It has a much higher reactivity than O₂ and leads to increased sensitivity when used in ICP-MS.^{22,23} However, due to its high reactivity, a tendency to form new spectral interferences from other matrix components historically rendered N₂O unfavourable for ICP-MS measurements. Nevertheless, with ICP-MS/MS, formations of new interferences are no longer as problematic. Thus, N₂O becomes a more viable option and is recently gaining traction within the community.

Here, a comprehensive evaluation of N₂O as a reaction cell gas for ICP-MS/MS measurements with a quadrupole-based reaction cell has been carried out for 73 elements. Mass-shift determinations have been compared against the most widely used alternative of O₂ for the removal of interferences. Additionally, possibilities for on-mass determinations of these elements using N₂O have been determined based on collisional focusing effects observed for the target analytes, as well as oxide and doubly-charged interferences. Finally, charge transfer reactions have been considered as possibilities for removal of interferences.

Experimental

Reagents

Nitric acid (HNO₃, *w* = 65%, p.a. grade; Carl Roth GmbH, Karlsruhe, Germany) was purified using a sub-boiling distillation system (Savillex DST-4000, AHF Analysentechnik, Tübingen, Germany). Hydrochloric acid (HCl, *w* = 65%, p.a. grade; Carl Roth GmbH) was purified by sub-boiling (Savillex DST-1000, AHF Analysentechnik). Reagent grade I water (18.2 MΩ cm; MilliQ IQ 7000, Merck-Millipore, Darmstadt, Germany) was used for all acid dilutions. Vials and pipette tips were pre-cleaned by soaking overnight in diluted sub-boiled nitric acid (*w* = 3%) before use.

Single-element standards of beryllium (Be), boron (B), cadmium (Cd), caesium (Cs), chromium (Cr), copper (Cu),

gadolinium (Gd), hafnium (Hf), indium (In), lithium (Li), magnesium (Mg), molybdenum (Mo), phosphorus (P), potassium (K), rubidium (Rb), sodium (Na), and tungsten (W) ($\beta = 1000 \mu\text{g mL}^{-1}$; Certipur, Merck); cerium (Ce), dysprosium (Dy), erbium (Er), europium (Eu), germanium (Ge), holmium (Ho), lanthanum (La), lutetium (Lu), neodymium (Nd), osmium (Os), praseodymium (Pr), samarium (Sm), terbium (Tb), thulium (Tm), and ytterbium (Y) ($\beta = 1000 \mu\text{g mL}^{-1}$; High Purity Standards, North Charleston, SC, USA); aluminium (Al), antimony (Sb), barium (Ba), bismuth (Bi), calcium (Ca), cobalt (Co), gold (Au), iodine (I), iron (Fe), lead (Pb), manganese (Mn), niobium (Nb), palladium (Pd), platinum (Pt), rhenium (Re), rhenium (Re), scandium (Sc), strontium (Sr), sulphur (S), tantalum (Ta), thallium (Tl), tin (Sn), titanium (Ti), zinc (Zn), zirconium (Zr), selenium (Se), and vanadium (V) ($\beta = 1000 \mu\text{g mL}^{-1}$; Inorganic Ventures, Christiansburg, VA, USA); selenium (Se) and vanadium (V) ($\beta = 1000 \mu\text{g mL}^{-1}$; Peak Performance, CPI international, Santa Rosa, CA, USA); nickel (Ni, $\beta = 1000 \mu\text{g mL}^{-1}$; Alfa Aesar, Karlsruhe, Germany); silicon (Si, $\beta = 1000 \mu\text{g mL}^{-1}$; SPEX Chemicals, Metuchen, NJ, USA); gallium (Ga) and yttrium (Y) ($\beta = 10 \mu\text{g mL}^{-1}$; Elemental Scientific, Omaha, NE, USA); tellurium (Te, $\beta = 10 \mu\text{g mL}^{-1}$; High Purity Standards); arsenic (As), iridium (Ir), ruthenium (Ru), and silver (Ag) ($\beta = 10 \mu\text{g mL}^{-1}$; Inorganic Ventures); and mercury (Hg, $\beta = 1 \mu\text{g mL}^{-1}$; Inorganic Ventures) were used throughout this work. Additionally, ICP multi-element standard solution VI (Certipur, Merck), rare earth element multi-element standard AHF-CAL-7 (Inorganic Ventures), and precious metal multi-element calibration standard #2 (AccuStandard, New Haven, CT, USA) were also used.

Tetramethylammonium hydroxide (TMAH, *w* = 25%; Sigma-Aldrich, Steinheim, Germany) diluted to *w* = 1% in reagent grade I water was used for analysis of the halogens. Sodium chloride ($\geq 99.5\%$, p.a. grade; Carl Roth GmbH) and potassium bromide (NORMAPUR grade; VWR, Vienna, Austria) salts were used to prepare standards for the analysis of chlorine (Cl) and bromine (Br) respectively.

Instrumentation

All work was carried out using a NexION 5000 (PerkinElmer, Waltham, MA, USA), an ICP-MS/MS system equipped with a quadrupole-based dynamic reaction cell (DRC). Here, the mass filter (prior to the reaction cell) is termed Q1 and the mass analyser (after the reaction cell) is termed Q3. Instrument parameters for the different measurement modes applied are given in Table 1. Argon (purity 5.0 ($\geq 99.999\%$); Linde Gas GmbH, Stadl-Paura, Austria) was used as the plasma gas. An in-house tuning solution containing 400 pg g⁻¹ Ce was used for tuning the oxide rate to 1.6–1.9%. The rate of Ce²⁺ formation was monitored (Ce²⁺/Ce⁺ of 4.5–5.0%). Nitrous oxide (medicinal grade; Linde Gas GmbH) and oxygen (purity 3.5 ($\geq 99.95\%$); Linde Gas GmbH) were used as reaction gases.

Analytical measurement

Mass-shift and on-mass determinations. For each element, a calibration was produced using purchased or in-house multi-element standards (ESI A; Table S1a†) and analysed in standard



Table 1 Instrument and plasma parameters for ICP-MS/MS measurements using the PerkinElmer NexION 5000

Parameter	Standard mode	O ₂ DRC mode	N ₂ O DRC mode
Scan mode	MS/MS	MS/MS	MS/MS
Cell gas	None	O ₂	N ₂ O
RPq	0.25	0.45	0.45
Sample introduction	Self-aspiration	Self-aspiration	Self-aspiration
Nebulizer	PFA MicroFlow	PFA MicroFlow	PFA MicroFlow
Spray chamber	Peltier cooled SilQ cyclonic spray chamber	Peltier cooled SilQ cyclonic spray chamber	Peltier cooled SilQ cyclonic spray chamber
Spray chamber temperature	5 °C	5 °C	5 °C
Interface cones	Nickel	Nickel	Nickel
RF power	1600 W	1600 W	1600 W
Ar nebulizer gas flow	0.96–1.01 L min ⁻¹	0.96–1.01 L min ⁻¹	0.96–1.01 L min ⁻¹
Ar auxiliary gas flow	1.2 L min ⁻¹	1.2 L min ⁻¹	1.2 L min ⁻¹
Ar plasma gas flow	16 L min ⁻¹	16 L min ⁻¹	16 L min ⁻¹
QID fixed voltage	-12 V	-12 V	-12 V
Hyperskimmer park voltage	5 V	5 V	5 V
OmniRing park voltage	-185 V	-185 V	-185 V
Inner target lens voltage	2 V	2 V	2 V
Outer target lens voltage	-7 V	-7 V	-7 V
Deflector exit voltage	-8 V	-8 V	-8 V
Differential aperture voltage	-3.5 V	-3.5 V	-3.5 V
Q1 AC rod offset	-6 V	-10 V	-7.5 V
Q1 rod offset	-2 V	-0 V	0 V
Cell rod offset	-33 V	-5 V	-2 V
Axial field voltage	0 V	125 V	250 V
Cell entrance voltage	-5 V	-8.5 V	-7.5 V
Cell exit voltage	-2 V	-5.5 V	-5 V
Q3 AC rod offset	-2.5 V	-7 V	-8 V
Q3 rod offset	-2 V	-10 V	-10 V
Dwell time	50 ms	50 ms	50 ms
Mass range	7–238 amu	7–280 amu	7–285 amu

(=no-gas) mode. For DRC measurements, intensities of selected product ions, as well as on-mass intensities, were determined over the range of 0–1 mL min⁻¹ gas flows of N₂O and O₂. For product ions that had been observed, but had not reached maximum intensity at 1 mL min⁻¹, the range was extended to 2 mL min⁻¹. Sensitivity was determined based on the slopes of the calibration curve. The formation rate of the product ions from DRC measurements were calculated based on the ratio of the slope of the product ion calibration curve to the slope of the calibration obtained using standard mode (expressed as a percentage).

A qualitative profile of the on-mass interaction of Xe with N₂O was carried out using the trace levels of Xe found within the Ar gas supply between 0–1 mL min⁻¹ of N₂O.

In order to determine if interfering oxide and doubly-charged ions (which are formed in the plasma) could be removed using on-mass determinations, further measurements were carried out between 0–1 mL min⁻¹ using N₂O only. The instrument was tuned to a higher oxide-rate of 200–300% in standard mode (compared to 1.6–1.9% used previously) by adjusting the z-position of the torch 1.5 mm closer to the sampler cone and increasing the nebulizer gas flow to 1.01 mL min⁻¹. Formation of Ce²⁺ was monitored (Ce²⁺/Ce⁺ of 40–50%) but not further tuned. In-house multi-element standards were prepared accounting for the interferences

on oxides and doubly-charged ions of analytes (ESI A; Table S1b†).

Asymmetric charge transfer. Screening of analytes that show asymmetric charge transfer with N₂O (over the range of 0–1 mL min⁻¹) was carried out using multi-element standards (ESI A; Table S1a†) with Q3 set to *m/z* of 44. Elements that showed a charge transfer reaction were re-analysed using single element standards with Q3 set to *m/z* of 30, 32 and 44 using N₂O flow rates of 0–2 mL min⁻¹. Ar, N, and O were measured with the addition of dilute HNO₃ blank (*w* = 2%) and with Q1 set to *m/z* 38, 15, and 17 respectively.

Results and discussion

General observations

Mass-shift determinations. Sensitivities, given by the slope of a calibration curve, were compared between O₂ and N₂O reaction gases for mass-shifting of the target analytes (Fig. 1). Of the 73 elements measured, 59 showed greater sensitivities when using N₂O compared to O₂. Li, Na, K, Rb, Cs, Ga, In, and Tl did not react with either gas. The use of O₂ provided higher sensitivities for the analysis of B, Mo, Ru, and Re. Finally, W and Cl showed minimal difference in sensitivity (<10%) using either gas. While the formation of dioxide (MO₂⁺, +32 amu) and, for very few elements, minimal formation of the trioxide (MO₃⁺, +48 amu) product ions were observed using O₂, the monoxide (MO⁺,



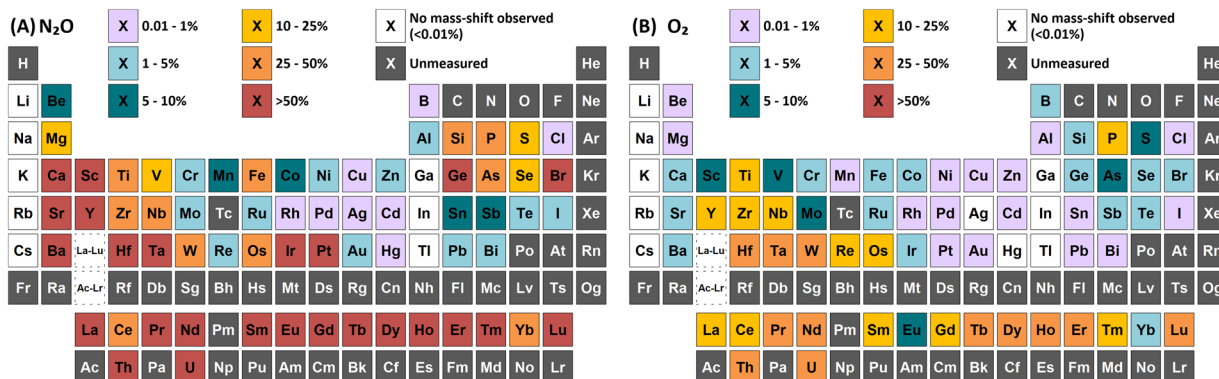


Fig. 1 Comparison of maximum achieved sensitivity (relative to standard mode) for mass-shift determinations (by atom transfer) using (A) N_2O and (B) O_2 reaction gases.

+16 amu) mass-shift produced the greatest sensitivity for all elements in each case. This was in contrast to previous studies using different ICP-MS/MS instrumentation where certain elements showed greater formation of the dioxide product ions.⁶ Using N_2O , certain elements showed higher sensitivities for the formation of the MO_2^+ , MO_3^+ , or tetroxide (MO_4^+ , +64 amu) product ions, as well as numerous different N-containing clusters. The product ions that gave the highest sensitivity for each element are highlighted in Fig. 2A. Additionally, it was observed that the variation of sensitivity with reaction gas flow rate generally provided much sharper optimums using N_2O compared to the broader optimums using O_2 . This suggests that, while N_2O does generally provide higher sensitivities of formed product ions compared to O_2 , the optimum gas flow range to capitalize on this sensitivity gain is rather narrow, which is a potential limitation since gas flows have to be adapted for each single analyte individually. Plots of variation of selected product ion formations with N_2O and O_2 flow rates for each element are included in ESI B.† Tables of maximum sensitivity of selected product ions and their optimum flow rate are provided in ESI A (Table S2 and S3†). Additionally, a comparison of observed limits of detection (LODs) and background equivalence concentrations (BECs) between standard mode and mass shift determinations with N_2O and O_2 is also provided (Table S4 and S5†).

On-mass determinations. The effect of N_2O and O_2 when used for on-mass determinations was also monitored. In total, 36 of the 73 measured elements showed a collisional focusing effect for on-mass determinations using N_2O (Fig. 2B). Generally, the effect was observed for elements that displayed lower atom transfer reactivity with N_2O , however Fe, Tm, and Yb (which react well with N_2O , but not completely) also showed a collisional focusing effect. While the collisional focusing effect is considered to give an apparent increase in sensitivity, the use of N_2O in this study only provided a moderate increase in sensitivity (compared to standard mode) for Au, Hg, and Tl, and an overall reduction in sensitivity for all other elements. This is likely due to a combination of the high collisional cross section of N_2O , the high reactivity (which removes some of the analyte by atom transfer), and that the gas cell voltages were

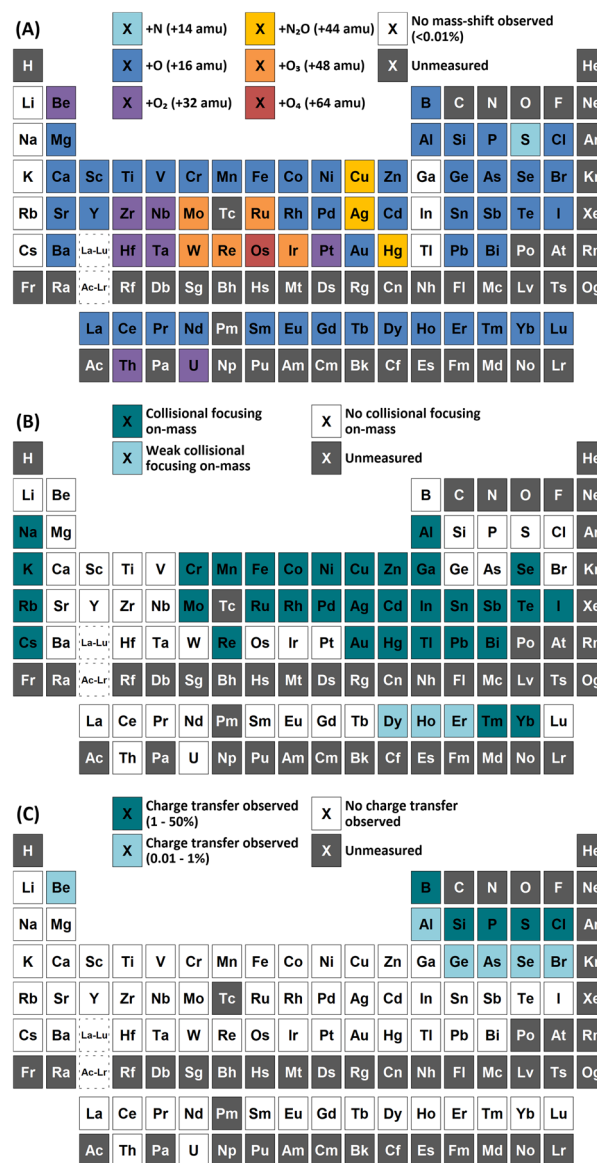


Fig. 2 Observations of (A) atom transfer with greatest sensitivity, (B) on-mass collisional focusing, and (C) asymmetric charge transfer reactions using N_2O reaction gas.



optimised specifically for mass-shift. However, the presence of the collisional focusing effect for certain elements meant that suppression of interferences was possible where interferences did not display this effect. No such collisional focusing effect was observed when using O₂ as the cell gas. Therefore, the use of N₂O can be a distinct advantage over O₂ as it can provide greater sensitivities for on-mass determinations for less reactive elements, as well as increased sensitivity for mass-shift determinations of more reactive elements. Variation of analyte sensitivity on-mass with N₂O flow rate is provided in ESI B.† Equally, variation of doubly-charged (M²⁺) and MO⁺ interferences of selected elements have also been included. Comparison of observed LODs and BECs between standard mode and on-mass determinations with N₂O is provided in ESI A (Table S6†).

Asymmetric charge transfer. The use of N₂O produced asymmetric charge transfer reactions with N⁺ (as well as N₂⁺), O⁺, Cl⁺, and Ar⁺, forming ¹⁴N₂¹⁶O⁺ on *m/z* 44 as well as ¹⁴N¹⁶O⁺ on *m/z* 30 and ¹⁶O₂⁺ on *m/z* 32. However, it was additionally observed that 10 analytes with ionisation energies lower than that of N₂O also underwent a charge transfer reaction – primarily the lighter p-block elements (Fig. 2C, Table S7†). For such reactions to be thermodynamically favourable, the analyte ions in the gas cell must be in an excited, metastable (M_(m)⁺) state (formed in the plasma) that have energies greater than the ionisation energy of N₂O. Such asymmetric charge transfer reactions have previously been reported for selected elements using O₂ gas²⁴ and occurs for ions that exhibit low-lying metastable ionic states. Observations of such charge transfer reactions using N₂O are discussed further here for individual elements.

Reaction with argon

Both N₂O and O₂ primarily react with Ar by the process of an asymmetric charge transfer reaction. For O₂, the ¹⁶O₂⁺ product was primarily observed, with an additional small formation of ³⁸Ar¹⁶O⁺ (0.008%) on *m/z* = 54 at 0.1 mL min⁻¹ that fell to baseline levels by 0.5 mL min⁻¹. In the case of N₂O, the primary product formed was the ¹⁴N₂¹⁶O⁺, with ¹⁴N¹⁶O⁺ and ¹⁶O₂⁺ also present at lower intensities. No formation of ³⁸Ar¹⁶O⁺ was observed on *m/z* = 54 and, as reported previously, no significant oxide formation was noted for ⁴⁰Ar above 0.4 mL min⁻¹ when considering the oxide formation from blank ⁴⁰Ca.²⁵

s-Block elements

Group 1 metals do not react with either N₂O or O₂. However, a collisional focusing effect was observed for on-mass determinations of these elements using N₂O, with the exception of Li. The magnitude of this effect was observed to increase down the group. On the other hand, group 2 metals react greatly with N₂O to form the monoxide product ion, with negligible formation of the dioxide product ion (<0.1%) observed (except Be). As such, the use of N₂O is a highly effective option of avoiding the isobaric interferences of ⁴⁰Ar⁺ and ⁴⁰K⁺ on ⁴⁰Ca⁺ (as well as ²⁴Mg¹⁶O⁺)^{25,26} and ⁸⁷Rb⁺ on ⁸⁷Sr⁺,^{26,27} as well as for the removal of isobaric Ba⁺ interferences for measurements of Cs

radioisotopes.^{28–30} Relative sensitivities of the oxide product ion (compared to standard mode) increased down the group, from Mg (13%) to Ba (70%). In the case of Be, both the monoxide and dioxide product ions formed, with relative sensitivities of 5.5% and 7.8% compared to that of standard mode respectively. The group 2 metals did not react well with O₂ (<2% formation) as it is an endothermic reaction. Be also showed evidence of charge transfer with N₂O, with 0.28% formation of ¹⁴N¹⁶O⁺ and 0.12% formation of ¹⁴N₂¹⁶O⁺.

p-Block elements

Group 13 elements. Mass shift of B⁺ to BO⁺ was found to give a greater sensitivity using O₂ compared to N₂O, albeit still with a low rate of formation (2.1%). Instead, the asymmetric charge transfer reaction of B_(m)⁺ with N₂O gave the greatest sensitivity (19% formation of ¹⁴N₂¹⁶O⁺). Conversely, mass shift of Al was found to give increased sensitivity using N₂O compared to O₂, though with similarly low rate of AlO⁺ formation (1.5%). In addition, collisional focusing was observed for on-mass determination of Al using N₂O. While an asymmetric charge transfer reaction of Al_(m)⁺ with N₂O was observed, the rate was much lower than that observed for B (¹⁴N¹⁶O⁺: 0.01%, ¹⁴N₂¹⁶O⁺: 0.01%). Ga, In, and Tl did not react with either N₂O or O₂, although collisional focusing was observed when measuring on-mass with N₂O. For Tl, oxide interferences of d-block elements can be effectively reduced using this approach, whereas Al and Ga still suffer from certain oxide-based interferences (Al⁺ from BO⁺ and Be⁺; Ga⁺ from MnO⁺). For In, on-mass determination with N₂O did not resolve the isobaric interferences of ¹¹³Cd⁺ and ¹¹⁵Sn⁺ as both of these elements were also found to exhibit collisional focusing on-mass.

Silicon. The use of N₂O formed new interferences at lower shifted masses (e.g. +14 and +16 amu). The most abundant isotope, ²⁸Si (92.23%), was unable to be used for mass-shift to ²⁸Si¹⁶O⁺ (*m/z* = 44) with N₂O as this product ion was masked by a large formation of the isobaric interference ¹⁴N₂¹⁶O⁺, formed by the process of a charge transfer reaction with ¹⁴N₂⁺, as the lower ionisation potential of N₂O (12.886 eV) compared to that of N₂ (15.5808 eV) renders such a reaction favourable.¹⁴ Mass-shift of ³⁰Si⁺ to ³⁰Si¹⁴N⁺ and ³⁰Si¹⁶O⁺ was found to suffer from interference due to the reaction of ¹⁴N¹⁶O⁺ with N₂O to form ¹⁴N₂¹⁶O⁺ and ¹⁴N¹⁶O₂⁺ respectively and varied with the matrix HNO₃ concentration. Therefore, ²⁹Si was used to assess the product ions formed.

A wide variety of product ions were observed to form when using N₂O. High formation of the SiO⁺ product ion (29%) was obtained – an improvement of 9 times greater than using O₂ reaction gas. Additionally, the charge transfer reaction between ²⁹Si_(m)⁺ and N₂O was found to give higher formations of ¹⁶O₂⁺ (28%) compared to the formation of ¹⁴N₂¹⁶O⁺ (23%) and ¹⁴N₂¹⁶O⁺ (7.3%). While mass-shift of ²⁸Si with O₂ to ²⁸Si¹⁶O⁺ has previously been demonstrated to successfully remove interferences and provide low-level Si determinations,³¹ the high background due to charge transfer with ¹⁴N₂⁺ that cannot be resolved makes the same approach using N₂O unfavourable. A good alternative is to mass-shift using the ²⁸Si¹⁶O₂⁺ product ion,



which gave 11% formation. This approach allows for an increase of 3.4 times sensitivity and similar LODs and BECs compared to O₂.

Phosphorus and sulphur. Both P and S showed high formation of the PO⁺ and SO⁺ product ions (28% and 11% respectively) using N₂O, giving 2.8 times and 1.5 times better sensitivity than for mass-shifting using O₂. Additionally, both elements formed the MN⁺ product ion at a significant rate. Both gases also displayed similar effective reduction in the LODs and BECs of 1–2 orders of magnitude (Table S4 and S5[†]). However, as with Si, the interference of NO⁺ from nitric acid causes a significant problem due to formations of N₂O⁺ and NO₂⁺. S showed a 5.9% formation of the SO₂⁺ product ion using N₂O, whereas minimal formation of SO₂⁺ was observed using O₂. Such formation of SO₂⁺ allows for reduction of interference of NO⁺, which is not possible with the SN⁺ or SO⁺ product ions. Conversely, P did not show similarly high rates of PO₂⁺ formation and therefore still suffers from NO⁺ interference.

In addition, both P and S showed a high rate of charge transfer with N₂O due to the formation of metastable ions. In both cases, formation of the ¹⁴N¹⁶O⁺ product ion was the greatest, at 16% and 12% for ³¹P_(m)⁺ and ³⁴S_(m)⁺ respectively. Charge transfer of ³¹P_(m)⁺ additionally formed ¹⁴N₂¹⁶O⁺ at 12% and ¹⁶O₂⁺ at 1.9% (although this may also include partial formation of ³¹P¹H⁺ from trace impurities in the N₂O, such as water vapour), while charge transfer of ³⁴S_(m)⁺ additionally formed ¹⁴N₂¹⁶O⁺ at 5.5% and ¹⁶O₂⁺ at 6.2%. Such a process may also be an option for removing interferences for both elements.

Germanium, arsenic, and selenium. Ge, As, and Se all showed greater sensitivity using N₂O to mass-shift from M⁺ to MO⁺ compared to O₂, with the formation rates of these elements using N₂O decreasing across the period. Ge showed the greatest improvement, with 29 times greater sensitivity using N₂O (68% formation), allowing for more effective reduction of interferences from the d-block metal oxide interferences. However, in extremely high Fe-containing matrices, interference of FeO⁺ on *m/z* 70, 72, 73, and 74 is likely not completely removed, as a small degree FeO₂⁺ was observed after mass-shift of Fe⁺ (0.4%).

As and Se showed improvements in sensitivity of 4.4 times and 2.9 times respectively using N₂O, while the formation rate achieved was 37% and 11% respectively. The use of N₂O still allows for the effective removal of interferences of d-block element oxides and doubly-charged f-block elements, as well as interferences of ArCl⁺ (by charge transfer),³² while boosting sensitivity and detection limits compared to O₂. ⁷⁴Se⁺ also shares an isobaric interference with ⁷⁴Ge⁺. The mass-shift approach only allowed for the measurement of ⁷⁴Ge⁺ with reduced interference from ⁷⁴Se⁺, as optimum sensitivity for ⁷⁴Ge⁺ was obtained with a lower flow rate of N₂O (0.4 mL min⁻¹) compared to that of ⁷⁴Se⁺ (1.3 mL min⁻¹) but the sensitivity of ⁷⁴Ge⁺ still remained relatively high at higher flow rates. Alternatively, Se showed collisional focusing on-mass using N₂O, whereas Ge did not. Therefore, on-mass determinations of ⁷⁴Se⁺ may be more suited to reducing the isobaric interference from ⁷⁴Ge⁺ and ⁷⁶Ge⁺ in addition to the aforementioned

interferences, with the exception of Sm²⁺ and Eu²⁺, which also showed collisional focusing (see f-Block section).

A charge transfer reaction was also observed between Ge_(m)⁺ and N₂O, forming ¹⁴N₂¹⁶O⁺ at 0.19%. Interestingly, As and Se also showed evidence of charge transfer with N₂O despite the ionisation potential of the low-lying energy levels of metastable As_(m)⁺ (9.920–12.590 eV) and Se_(m)⁺ (11.385–12.715 eV)²⁴ being slightly lower than that of N₂O (12.886 eV), thus leading to an endothermic reaction that should be unfavourable. ¹⁴N₂¹⁶O⁺ formations of 0.57% and 0.12% were observed for As and Se. It could be that the charge transfer reaction proceeds due to the addition of the kinetic energy component of the ions passing through the cell, or perhaps that the ions exist in an even higher energy state (induced by charge transfer reactions with metastable Ar_(m)⁺). Further investigation is required to evaluate the reason for this anomaly.

Tin, lead, antimony, bismuth, and tellurium. Similar to Ge, As, and Se, the heavier p-block elements tended to only form MO⁺ product ions with N₂O, with formations decreasing along both the periods and the groups. Additionally, collisional focusing was observed when using N₂O. This was contrary to the observed mass-shifts with O₂, where only Sb and Te showed significant MO⁺ formation (4.8% and 1.9% respectively), with Sn, Pb, and Bi showing minimal reaction (<1%).

Of these elements, Sn showed the greatest benefit from mass-shift using N₂O, with 9.8% formation. This allows for the removal of the isobaric interference of ¹¹⁵In⁺ on ¹¹⁵Sn⁺, as well as the removal of interferences from oxides of d-block elements. However, ²³⁸U²⁺ may be an issue due to observed high UO₂⁺ formation with N₂O, which may also indicate high formation ²³⁸U¹⁶O₂²⁺ that would interfere on ¹¹⁹Sn¹⁶O⁺. Here, the collisional focusing effect is advantageous, as this offers reduction of ²³⁸U²⁺ as well as the aforementioned interferences. For Sb, Te, Pb, and Bi, on-mass determinations may be preferable for maintaining higher sensitivity and reducing oxide-based interferences, however the isobaric interferences between Sn, Sb, and Te cannot be resolved using N₂O due to similarities in reactivity and collisional focusing effects.

Halogens. Reaction of Br and I with N₂O gave much higher sensitivities for the formation of the MO⁺ product ion compared to that of O₂ reaction gas (48× and 3.6× greater sensitivity respectively). However, only Br showed a high rate of oxide formation (57%), allowing for reduced interference from CuO⁺, ZnO⁺, and doubly-charged f-block elements. Conversely, formation of IO⁺ was much lower at 1.8%. Instead, the observed collisional focusing on-mass using N₂O allows for a greater sensitivity. The radionuclide ¹²⁹I (used for isotope dilution) suffers interference from ¹²⁹Xe, which can be present in trace quantities in the Ar gas supply. O₂ has been used previously to successfully resolve this interference on-mass.³³ Here, on-mass measurements of trace ¹²⁹Xe and ¹³²Xe with N₂O showed a collisional focusing effect, which indicates that the isobaric interference of ¹²⁹Xe on ¹²⁹In cannot be resolved in this way. Therefore, O₂ is likely more preferable in this case.

Cl did not show a significant improvement in sensitivity of oxide formation, with a ClO⁺ formation rate of approximately 0.7% for both reaction gases. Instead, Cl primarily underwent



a charge transfer reaction process, as the ionisation potential of Cl^+ (12.968 eV) is greater than that of both N_2O and O_2 . Here, the formation of $^{14}\text{N}_2^{16}\text{O}^+$ was 50%, with additional formations of $^{16}\text{O}_2^+$ and $^{14}\text{N}^{16}\text{O}^+$ at 0.76% and 0.88% respectively. Asymmetric charge transfer was also observed for Br (due to $\text{Br}_{(\text{m})}^+$) but to a much lower degree, with $^{14}\text{N}_2^{16}\text{O}^+$ formation of 0.60% and $^{14}\text{N}^{16}\text{O}^+$ formation of 0.07% observed.

d-Block elements

Comparison of the formations of selected product ions for the d-block elements using N_2O and O_2 reaction gases is provided in Fig. 3.

Scandium and yttrium. Using N_2O , Sc and Y both showed high oxide formation (67% and 54% formation respectively) with minimal dioxide formation (<0.4%). Compared to the use of O_2 , N_2O provides a sensitivity enhancement of 7.5 times for Sc and 4.1 times for Y. Given both elements are monoisotopic, it is vital to resolve the spectral interferences. In the case of ^{89}Y ,

mass shift to $^{89}\text{Y}^{16}\text{O}^+$ can resolve interferences of $^{73}\text{Ge}^{16}\text{O}^+$ and $^{71}\text{Ga}^{18}\text{O}^+$, as well as interferences from transition metals that form clusters with Ar, as they do not readily react with N_2O . However, the observed high formations of HfO_2^+ in the reaction cell may indicate that the isobaric interference of $^{178}\text{Hf}^{2+}$ may not be removed using either reaction gas. In the case of Sc, interference of $^{89}\text{Y}^{2+}$ (on $m/z = 44.5$) may be removed (due to observed low formations of the dioxide product ion), however the major interference of SiO^+ (primarily $^{28}\text{Si}^{17}\text{O}^+$ and $^{29}\text{Si}^{16}\text{O}^+$) is not removed using N_2O due to the observed high formation of the SiO_2^+ product ion. Therefore, in high Si-containing matrices, O_2 may perform better as a reaction gas due to the much lower observed formation of SiO_2^+ in the reaction cell. The discussion for La and Lu is contained within the lanthanides section (f-Block elements).

Group 4 and 5 elements. Both the Ti- and V-group elements also react very well with O_2 and N_2O , with relative sensitivities of the product ions generally increasing down the groups. For

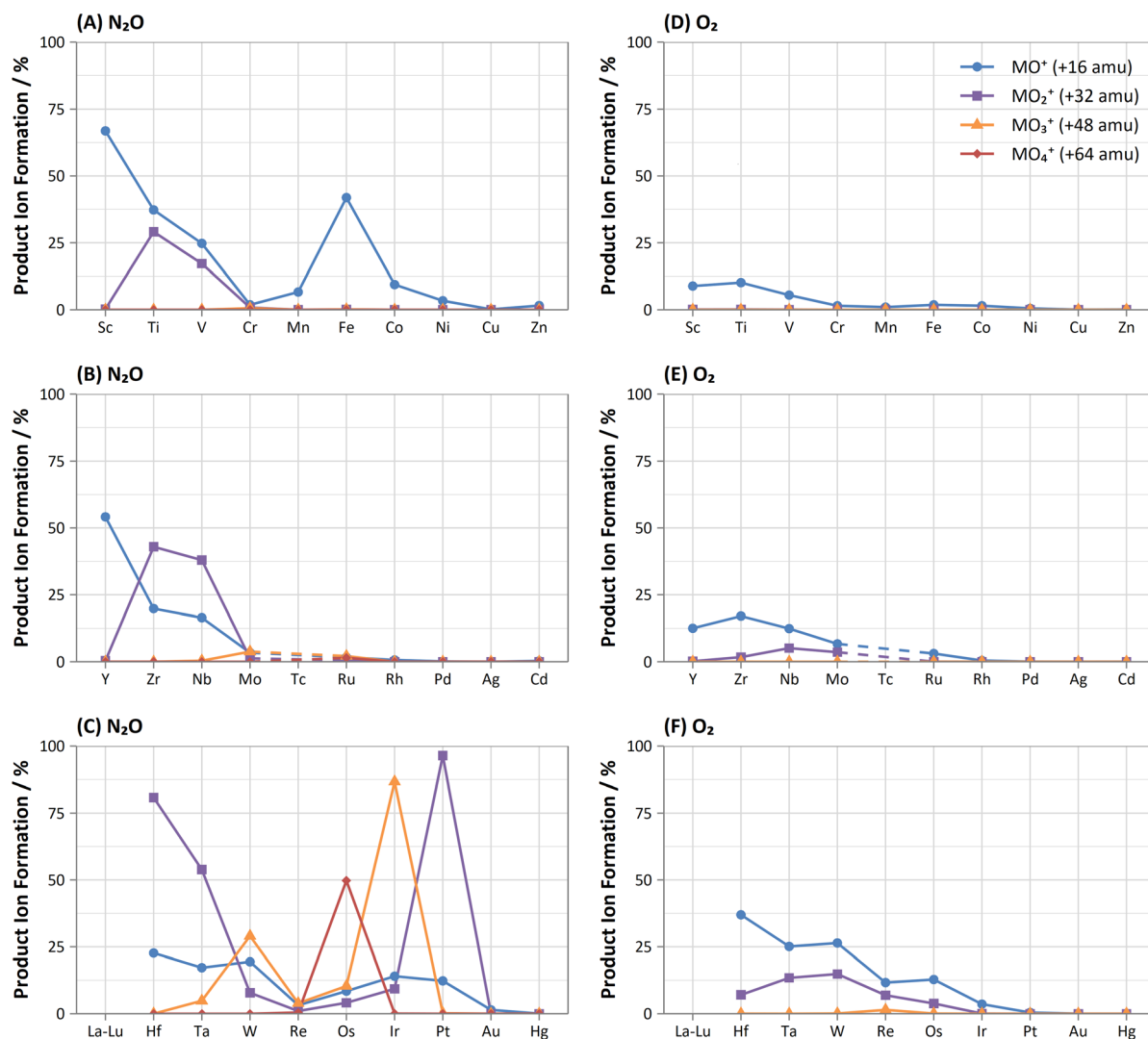


Fig. 3 Comparison of obtained maximum formations of metal-oxide (blue, circle), -dioxide (purple, square), -trioxide (orange, triangle), and -tetroxide (red, diamond) product ions for d-block elements using (A–C) N_2O and (D–F) O_2 reaction gases between 0–1 mL min^{-1} .



example, oxide formations using O₂ gave relative sensitivities varying from 10% (for Ti) to 33% (for Hf), and from 5.5% (for V) to 37% (for Ta). When using N₂O as a reaction gas, the dioxide product ion gave the best sensitivities for Zr, Nb, Hf, and Ta, with the relative sensitivities of Hf and Ta notably reaching 81% and 54% respectively. This allows for effective removal of interferences from p-block and f-block element oxides, as well as the removal of Hf²⁺, Ta²⁺ and W²⁺ interferences on Zr⁺ and Nb⁺ (however Os was found to form OsO₄⁺ with a high rate, so Os²⁺ interferences may not be removed). Ti and V gave the greatest relative sensitivities when monitoring the MO⁺ product ion (37% and 25% respectively). Although, it should be noted that the MO₂⁺ product ion also formed at a high rate (29% and 17% respectively) and could also be utilized – for example, to remove Zr²⁺, Nb²⁺, Mo²⁺, and Ru²⁺ interferences, and to remove SO⁺ interferences in high S-containing matrixes. Fu *et al.* proposed an alternative approach to remove SO⁺ interferences on V⁺ using the VN⁺ product ion.³⁴ However this approach was found not to be viable in this study, as the VN⁺ product ion formed at only 0.5%, which could be due to the difference in the type of reaction cell design used in the NexION 5000. Ti also showed only a small formation of TiN⁺ at 2.6% however, formation of the MN⁺ product ion was observed to be much greater for Zr (16%), Nb (8.1%), Hf (10%) and Ta (7.7%).

Chromium, manganese, iron, and cobalt. Fe showed high reactivity with N₂O, forming the FeO⁺ product ion at a rate of 42%. Mn and Co reacted less with N₂O, with 6.6% and 9.4% formation of the MO⁺ product ion respectively, while Cr only showed 1.9% formation. Mass-shift of these elements allowed for effective reduction of Ar-based interferences (such as ArC⁺ and ArO⁺),³⁴ M²⁺ interferences (from p-block elements), and MO⁺ interferences of ClO⁺, KO⁺ and CaO⁺. Of these analytes, Fe showed the greatest benefit from mass-shifting, as the LOD and BEC were lowered by 340 times and 8300 times respectively (Table S4†). Cr, Fe, Mn, and Co additionally showed collisional focusing on-mass with N₂O, which provides an alternative approach to reducing interferences and maintaining high sensitivity, particularly in the case of Cr as the LOD and BEC were reduced by 180 times and 5600 times respectively (Table S6†).

Molybdenum, ruthenium, and rhodium. Mo, Ru, and Rh showed generally low atom transfer reactivity with N₂O. The highest sensitivity for Mo and Ru was obtained for the MO₃⁺ product ion (3.8% and 2.1% respectively). Rh showed the highest formation for the RhO⁺ product ion, although the formation was <1% for both gases. In comparison, O₂ performed 1.8 and 1.5 times better for Mo and Ru respectively. While the use of N₂O for mass-shift of these elements can reduce interferences, the low sensitivity is a limiting factor. On-mass determinations with N₂O showed collisional focusing for all three elements. This allows for the reduction of doubly-charged interferences from W²⁺, Os²⁺, and Ir²⁺, as well as isobaric interferences from Zr⁺ on Mo⁺, which are removed by the process of atom transfer. However, interferences from high levels of BrO⁺, SeO⁺, and SrO⁺ cannot be resolved on-mass.

Tungsten, rhenium, osmium, and iridium. Numerous product ions were observed for W, Os, and Ir using N₂O. In

particular, high formations of MN⁺, MO⁺, MO₂⁺, and MO₃⁺ were observed. Both W and Ir showed the highest sensitivity for the MO₃⁺ product ion, at 29% and 87% formation respectively. Compared to the use of O₂, N₂O provided little benefit in terms of sensitivity for W. However, for Ir, a marked improvement in sensitivity of 24 times was observed. Both gases can be used to effectively remove the lanthanide oxide interference. However, neither gas can eliminate the isobaric interferences of ¹⁸⁰Ta⁺ and ¹⁸⁰Hf⁺ on ¹⁸⁰W⁺, or ¹⁸⁶Os⁺ on ¹⁸⁶W⁺ due to the similar formation of product ions. Os additionally formed the OsO₄⁺ product ion at a high rate (50% formation) with N₂O, which provided a 3.8 times greater sensitivity than for O₂. Additionally, N₂O allows for the resolution of isobaric interferences from ¹⁸⁴W⁺, ¹⁸⁶W⁺, ¹⁹⁰Pt⁺ and ¹⁹²Pt⁺, which did not form significant MO₄⁺ product ions, as well as the reduction of isobaric interference from ¹⁸⁷Re⁺, since Re was observed to also form ReO₄⁺ but at a much lower rate (0.48%). In comparison, Re did not show high sensitivity using mass-shift with N₂O (maximum of 3.8% formation for ReO₃⁺), with O₂ providing 3.2 times greater sensitivities. Collisional focusing was observed on-mass using N₂O, which also allows for the reduction of isobaric interference from ¹⁸⁷Os⁺ and higher sensitivity, however interferences from lanthanide oxides persist.

Group 10, 11 and 12 elements. With the exception of Pt, the Ni-, Cu-, and Zn-group elements generally showed minimal reaction with O₂ (≤1% formation) or N₂O (≤3.4% formation). Ag showed no oxide formation using either gas and Hg showed no oxide formation using O₂. These elements also formed the MN₂O⁺ product ion using N₂O reaction gas, albeit also with very low formation rates (≤1% formation). However, observed formations of the MO₂⁺ and MN₂O·O⁺ product ions from interfering Ti- and V-group transition metals may mean that resolution of interfering transition metal oxides is not likely to be possible by mass-shifting.

Collisional focusing of Au and Hg, as well as removal of TaO⁺, HfO⁺, WO⁺, ReO⁺ and OsO⁺ with N₂O, allows for on-mass determinations. Equally, the same approach could resolve the interferences of ZrO⁺, NbO⁺, and MoO⁺ on Ag⁺ and Cd⁺. However, Cd also suffers from isobaric interferences of Pd⁺, In⁺, and Sn⁺, which could not be resolved in this way due to similar collisional focusing effects of these elements. Therefore, for routine measurements, on-mass determinations of Cd with N₂O on *m/z* = 111 would be advisable. Oxide interferences of Be- and Sc-group elements, as well as VO⁺, CrO⁺, and MnO⁺ demonstrated collisional focussing on-mass. Therefore, these interferences cannot be resolved for Co, Ni, and Cu, as well as Pd using N₂O.

Contrary to the other elements in these groups, Pt shows markedly higher reactivity with N₂O, while still producing minimal oxide formation using O₂. In this case, the PtO₂⁺ product ion gave the highest sensitivity, with 96% formation. Therefore, mass-shift of Pt to PtO₂⁺ could be used to resolve interferences from HfO⁺, TaO⁺, and even the isobaric interferences of ¹⁹⁶Hg⁺ and ¹⁹⁸Hg⁺, however the observed high formation of WO₃⁺ may indicate that the WO⁺ interference (on *m/z* = 196 and 198) may not be resolved. Additionally, isobaric



interferences from $^{190}\text{Os}^+$ and $^{192}\text{Os}^+$ cannot be resolved due to high formation of OsO_2^+ .

f-Block elements

Lanthanides. A comparison of the obtained relative sensitivities of lanthanide oxides for N_2O and O_2 is given in Fig. 4. Similar to the Sc-group elements (see d-block elements), the lanthanides show high oxide formation (44–76%) and low dioxide formation (<0.6%, with the exception of Lu, which gave 2.8%) using N_2O as a reaction gas. Additionally, N_2O provided greater sensitivity compared to O_2 for all lanthanides, especially for Eu and Yb (13.6 and 11.2 times greater sensitivity respectively), which showed much lower sensitivities with O_2 (due to the lower bond dissociation energies of EuO^+ and YbO^+ that result from the half- and fully-filled f-orbital respectively)^{35,36} whereas similarly low sensitivities were not observed when using N_2O (also observed in literature).^{6,23} However, other examples of a similar periodicity were observed using N_2O . High formation of the MN^+ product ion was obtained for La and Ce (11% and 16% respectively), with further elements showing decreasing formation towards Eu. Gd and Tb also showed elevated MN^+ formation (2.5% and 2.1% respectively), with subsequent elements, again, showing lower formations.

The flow rate of N_2O that gave the greatest MO^+ sensitivity increased across the period, from 0.5 mL min^{-1} for La to 0.8 mL min^{-1} and 0.7 mL min^{-1} for Yb and Lu respectively, whereas for O_2 the flow rate was in most cases 0.3 mL min^{-1} (but slightly higher for Eu and Yb). Both N_2O and O_2 are capable of resolving oxide-based interferences of other lanthanides, as

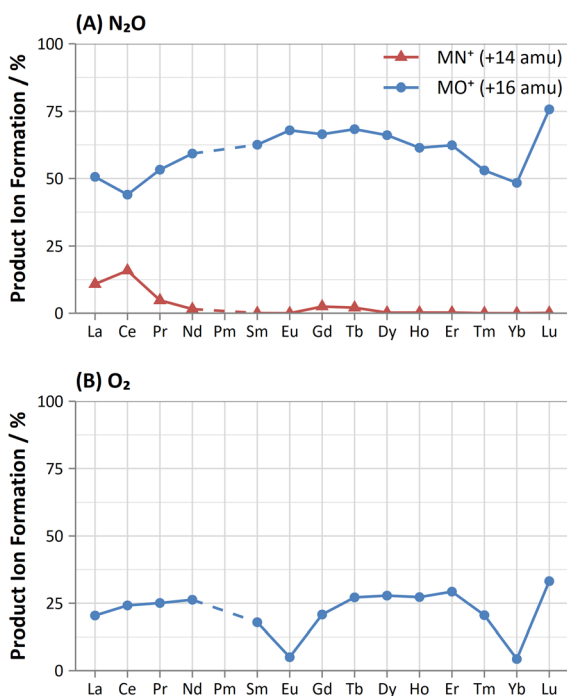


Fig. 4 Comparison of obtained product ion formations for oxide (blue, circle) and nitride (red, triangle) product ion formation using (A) N_2O and (B) O_2 reaction gases.

well as SnO^+ , SbO^+ , TeO^+ , CsO^+ , and BaO^+ , however the increased sensitivity offered by N_2O makes it more preferable.

On-mass determinations with N_2O showed evidence of collisional focusing from Dy to Yb, which became more prevalent across the period (Fig. 5). The observed strong on-mass collisional focusing effect for Yb allows for the reduction of isobaric interferences from $^{174}\text{Hf}^+$, $^{176}\text{Hf}^+$ and $^{176}\text{Lu}^+$, as no collisional focusing effect was observed for these interfering elements. However, the reduction of isobaric interferences from $^{168}\text{Er}^+$ and $^{170}\text{Er}^+$ are less effective as the interference also exhibits some collisional focusing effect. Equally so, any interferences of lanthanide oxides formed in the plasma also could not be resolved on-mass due to the collisional focusing effect. Therefore, this observation may be limited to a few specific applications.

Furthermore, on-mass collisional focusing of doubly-charged lanthanides with N_2O was observed primarily for Sm^{2+} , Eu^{2+} , Tm^{2+} and Yb^{2+} (ESI B^+), whereas other doubly-charged lanthanides were generally removed with the addition of N_2O . This indicates that on-mass determinations of other analytes (such as As^+ and Se^+) will continue to suffer interferences from these four lanthanides. Product ion scans of the doubly-charged lanthanides revealed minimal product ion formation where a strong collisional focusing effect was observed, which was similarly observed for other singly-charged elements with low reactivity (Fig. 2A and B). Doubly-charged lanthanides that did not show collisional focusing were removed by mass-shifting with N_2O to a different m/z . For these lanthanides, MO^+ was the major product ion observed, with MO^{2+} and N_2O^+ product ions additionally present. The M^+ product ion was not observed in any case. The observed product ions likely indicate an initial atom transfer reaction to form MO^{2+} , followed by a charge transfer reaction with N_2O to form MO^+ and N_2O^+ . This is supported in part by the thermodynamically unfavourable (endothermic) charge transfer reaction between N_2O and doubly-charged lanthanides (second ionisation potentials between 10.55–12.18 eV for La–Yb)¹⁴ combined with the absence of M^+ product ions. However, this cannot yet be stated with certainty as literature values for the second

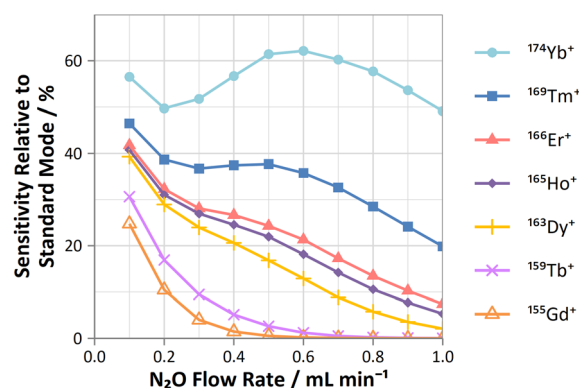


Fig. 5 Profiles of sensitivities for Gd, Tb, Dy, Ho, Er, Tm, and Yb (relative to standard mode) determined on-mass using N_2O reaction gas.



ionisation potential of gas phase lanthanide oxides is, to the authors' knowledge, not presently available.

Actinides. Contrary to the reactions observed for the lanthanides, the two actinides measured in this study (Th and U) showed substantially higher formation of the MO_2^+ product ion (63% and 51% respectively), with a reduced formation of the MO^+ product ion (23% and 27% respectively), when using N_2O as a reaction gas. Additionally, higher formation of the MNO^+ product ion, as well as the MN^+ product ion, were observed. Reaction with O_2 also showed the formation of both the MO^+ and MO_2^+ product ions, however the MO^+ product ion showed greater relative sensitivities.

Conclusions

This work highlights the versatility and applicability of N_2O as a reaction cell gas for determinations of 73 elements. While it may not be suitable for every individual application, its high effectiveness of oxide formations compared to oxygen, as well as its ability to induce a collisional focusing effect on-mass, makes it a strong choice for routine analysis using ICP-MS/MS.

While the rate of product ion formation by atom transfer may traditionally be the primary determining factor for performing mass-shift or on-mass determinations, the data provided here demonstrates considerable overlap of effectiveness of both approaches. Given this context, different interference removal approaches using N_2O may be preferable depending on the level of interfering matrix elements and the concentration of the target analyte in solution.

Author contributions

Shaun T. Lancaster: conceptualization, investigation, data curation, writing—original draft preparation; Thomas Prohaska: conceptualization, supervision, writing—review and editing; Johanna Irrgeher: conceptualization, funding acquisition, supervision, writing—review and editing.

Conflicts of interest

There are no conflicts to declare.

Acknowledgements

This research was partially funded by the Austrian Science Fund FWF (Fonds zur Förderung der wissenschaftlichen Forschung), grant number P 33099-N. This project (20IND01 MetroCycleEU) has received funding from the EMPIR programme co-financed by the Participating States and from the European Union's Horizon 2020 research and innovation programme. The authors would like to thank PerkinElmer for their cooperation in the study.

Notes and references

1 D. W. Koppenaal, G. C. Eiden and C. J. Barinaga, *J. Anal. At. Spectrom.*, 2004, **19**, 561–570.

- 2 L. Balcaen, E. Bolea-Fernandez, M. Resano and F. Vanhaecke, *Anal. Chim. Acta*, 2015, **894**, 7–19.
- 3 E. Bolea-Fernandez, L. Balcaen, M. Resano and F. Vanhaecke, *J. Anal. At. Spectrom.*, 2017, **32**, 1660–1679.
- 4 Y. Zhu, T. Ariga, K. Nakano and Y. Shikamori, *At. Spectrosc.*, 2021, **42**, 299–309.
- 5 K. Harouaka, C. Allen, E. Bylaska, R. M. Cox, G. C. Eiden, M. L. di Vacri, E. W. Hoppe and I. J. Arnquist, *Spectrochim. Acta, Part B*, 2021, **186**, 106309.
- 6 O. Klein, T. Zimmermann and D. Pröfrock, *J. Anal. At. Spectrom.*, 2021, **36**, 1524–1532.
- 7 S. T. Lancaster, T. Prohaska and J. Irrgeher, *Anal. Bioanal. Chem.*, 2022, 3–10.
- 8 S. Trimmel, T. C. Meisel, S. T. Lancaster, T. Prohaska and J. Irrgeher, *Anal. Bioanal. Chem.*, 2023, **415**, 1159–1172.
- 9 K. Harouaka, K. Melby, E. J. Bylaska, R. M. Cox, G. C. Eiden, A. French, E. W. Hoppe and I. J. Arnquist, *Geostand. Geoanal. Res.*, 2022, **46**, 387–399.
- 10 D. Pröfrock, P. Leonhard, S. Wilbur and A. Prange, *J. Anal. At. Spectrom.*, 2004, **19**, 623–631.
- 11 E. Bolea-Fernandez, L. Balcaen, M. Resano and F. Vanhaecke, *Anal. Chem.*, 2014, **86**, 7969–7977.
- 12 E. Bolea-Fernandez, D. Leite, A. Rua-Ibarz, L. Balcaen, M. Aramendia, M. Resano and F. Vanhaecke, *J. Anal. At. Spectrom.*, 2017, **32**, 2140–2152.
- 13 S. D'Ilio, N. Violante, C. Majorani and F. Petrucci, *Anal. Chim. Acta*, 2011, **698**, 6–13.
- 14 *CRC Handbook of Chemistry and Physics*, ed. D. R. Lide, CRC Press, Boca Raton, FL, 80th edn, 2000, pp. 10–175 to 10–177.
- 15 D. J. Douglas and C. J. B. French, *J. Am. Soc. Mass Spectrom.*, 1992, **3**, 398–408.
- 16 D. J. Douglas, *J. Am. Soc. Mass Spectrom.*, 1998, **9**, 101–113.
- 17 B. Russell, S. L. Goddard, H. Mohamud, O. Pearson, Y. Zhang, H. Thompkins and R. J. C. Brown, *J. Anal. At. Spectrom.*, 2021, **36**, 2704–2714.
- 18 S. F. Boulyga and J. S. Becker, *J. Anal. At. Spectrom.*, 2002, **17**, 1202–1206.
- 19 E. McCurdy and G. Woods, *J. Anal. At. Spectrom.*, 2004, **19**, 607–615.
- 20 F. Ardini, E. Magi and M. Grotti, *Anal. Chim. Acta*, 2011, **706**, 84–88.
- 21 C. Suárez-Oubiña, P. Herbelo-Hermelo, P. Bermejo-Barrera and A. Moreda-Piñeiro, *Spectrochim. Acta, Part B*, 2022, 187.
- 22 V. V. Lavrov, V. Blagojevic, G. K. Koyanagi, G. Orlova and D. K. Bohme, *J. Phys. Chem. A*, 2004, **108**, 5610–5624.
- 23 G. K. Koyanagi and D. K. Bohme, *J. Phys. Chem. A*, 2001, **105**, 8964–8968.
- 24 K. Böting, S. Treu, P. Leonhard, C. Heiß and N. H. Bings, *J. Anal. At. Spectrom.*, 2014, **29**, 578–582.
- 25 S. T. Lancaster, T. Prohaska and J. Irrgeher, *Anal. Bioanal. Chem.*, 2022, **414**, 7495–7502.
- 26 K. J. Hogmalm, T. Zack, A. K. O. Karlsson, A. S. L. Sjöqvist and D. Garbe-Schönberg, *J. Anal. At. Spectrom.*, 2017, **32**, 305–313.
- 27 D. T. Murphy, C. M. Allen, O. Ghidan, A. Dickson, W. P. Hu, E. Briggs, P. W. Holder and K. F. Armstrong, *Rapid Commun. Mass Spectrom.*, 2020, **34**(5), e8604.



- 28 M. Granet, A. Nonell, G. Favre, F. Chartier, H. Isnard, J. Moureau, C. Caussignac and B. Tran, *Spectrochim. Acta, Part B*, 2008, **63**, 1309–1314.
- 29 T. Ohno and Y. Muramatsu, *J. Anal. At. Spectrom.*, 2014, **29**, 347–351.
- 30 L. Zhu, X. Hou and J. Qiao, *Anal. Chem.*, 2020, **92**, 7884–7892.
- 31 R. S. Amais, C. D. B. Amaral, L. L. Fialho, D. Schiavo and J. A. Nóbrega, *Anal. Methods*, 2014, **6**, 4516–4520.
- 32 D. R. Bandura, V. I. Baranov and S. D. Tanner, *Fresenius. J. Anal. Chem.*, 2001, **370**, 454–470.
- 33 T. Ohno, Y. Muramatsu, Y. Shikamori, C. Toyama, N. Okabe and H. Matsuzaki, *J. Anal. At. Spectrom.*, 2013, **28**, 1283–1287.
- 34 L. Fu, G. Huang, Y. Hu and F. Pan, *Anal. Chem.*, 2022, **94**, 3035–3040.
- 35 R. J. Ackermann, E. G. Rauh and R. J. Thorn, *J. Chem. Phys.*, 1976, **65**, 1027–1031.
- 36 Y. Zhu, *Talanta*, 2020, **209**, 120536.

