

Cite this: *Chem. Sci.*, 2018, 9, 2443

Increasing the bioactive space of peptide macrocycles by thioamide substitution†

Hitesh Verma,^a Bhavesh Khatri,^a Sohini Chakraborti^a
and Jayanta Chatterjee^{*ab}

We show that substituting a single atom, O to S (amide to thioamide), in a peptide bond results in global restriction of the conformational flexibility in peptide macrocycles with minimal perturbation of the parent conformation. The van der Waals interactions between the C=S group and the surrounding atoms are the major driving force in inducing the conformational restriction, resulting in well-defined structures of these cyclic peptides with static 3-D presentation of the pharmacophores. Utilizing this property of thioamides, we report the development of a superactive antagonist of pro-angiogenic $\alpha\beta3$, $\alpha\beta5$ and $\alpha5\beta1$ integrins, which are responsible for cancer cell proliferation and survival. Using simple thio-scanning and spatial screening of a non-efficacious and conformationally flexible cyclic peptide, we could achieve a more than 10^5 fold enhancement in its efficacy *in cellulo* via a single O to S substitution. The developed peptide shows better efficacy in inhibiting the pro-angiogenic integrins than the drug candidate cilengitide, with a significantly enhanced serum half-life of 36 h compared to that of cilengitide (12 h). The long shelf-life, absence of non-specific toxicity and resistance to degradation of the thioamidated macrocyclic peptides in human serum suggest the promise of thioamides in markedly improving the affinity, efficacy and pharmacology of peptide macrocycles.

Received 28th October 2017
Accepted 19th January 2018

DOI: 10.1039/c7sc04671e

rsc.li/chemical-science

Introduction

In recent years, peptide macrocycles, as opposed to small molecules, have emerged as an extremely useful scaffold to target various extracellular and intracellular proteins.¹ The complex structures of peptide macrocycles give rise to a unique combination of ϕ , ψ , and χ space aiding in molecular recognition towards target binding.² Nevertheless, macrocyclic structures are often associated with conformational flexibility, introducing an entropic penalty to target binding that severely compromises their affinity and selectivity against a biological target.³ Thus, covalent or noncovalent constraints that minimize the conformational entropy in peptides are highly desirable.^{3,6,4} In particular, constraints that minimally alter the bioactive peptide sequence are of paramount interest. In this context, peptide bond surrogates like peptoids,⁵ retro-inverso peptides,⁶ depsipeptides,⁷ azapeptides⁸ and *N*-methylated peptides⁹ have found use in delivering bioactive analogs with increased affinity, selectivity and metabolic stability. However, the strictest isostere of a peptide bond, the thioamide,¹⁰ attracted our attention. Thioamides show longer C=S bonds of

1.65 Å compared to 1.23 Å for C=O bonds, and a larger van der Waals radius of S of 1.80 Å compared to 1.52 Å for O in oxoamides.¹⁰ In addition, the increased rotational barrier about the C–N bond, and the reduced hydrogen bond acceptor but stronger hydrogen bond donor capacity of thioamides compared to regular amides,¹⁰ encouraged us to understand the conformational behavior of thio-substituted macrocyclic peptides. Thioamides have found great utility both in biophysics and medicinal chemistry. They have been utilized as minimal fluorescence quenchers, protease sensors, photoswitchable elements in peptides, and probes to interrogate the dynamics of hydrogen bonds in α -helices and β -sheets.¹¹ Furthermore, thioamides have also shown improved bioactivity and metabolic stability compared to linear bioactive peptides.¹² Despite the versatile utility of thioamides, their potential to deliver selective and high-affinity macrocyclic ligands has not been systematically addressed.¹³

Thus, we set out to investigate the role of thioamides in peptide macrocycles, with special emphasis on the effect of thionation in the secondary structure motifs commonly occurring in bioactive macrocycles *viz.* β II, β II', β VI and γ -turns, as observed in cyclosporine A, gramicidin S, somatostatin agonists, integrin antagonists *etc.*, which have found enormous utility in treating pathological conditions.^{3c} This report details the conformational impact of thioamide substitution on cyclic peptide backbones that leads to reduced flexibility of the peptide backbone and allows for the static presentation of the pharmacophores, resulting in a dramatically increased binding

^aMolecular Biophysics Unit, Indian Institute of Science, Bangalore 560012, India. E-mail: jayanta@iisc.ac.in

^bNMR Research Centre, Indian Institute of Science, Bangalore 560012, India

† Electronic supplementary information (ESI) available. See DOI: 10.1039/c7sc04671e



affinity and enhanced metabolic stability of the thioamidated macrocyclic peptides.

Results and discussion

Conformational impact of thioamides on a cyclic peptide backbone

To initially determine the conformational impact of thioamide substitution in peptide macrocycles, we synthesized a regioisomeric library of monothionated analogs of the parent cyclic peptide cyclo(-D-Ala-Ala₄-), which is known to adopt a βII'-type and γ-type turn (Fig. 1A).¹⁴ The ¹H NMR spectra of all the thionated cyclic peptides in DMSO-*d*₆ were well dispersed indicating the presence of a well-defined conformation (ESI†). Utilizing the distance restraints obtained from the ROESY spectrum, we derived the solution conformations of the cyclic peptides (Fig. 1A). The introduction of the C=S groups did not introduce large perturbation to the global conformations of the cyclic peptides, however, we observed that unlike the C=O groups, none of the thioamides were internally oriented, indicating a lack of intramolecular hydrogen bonding with the C=S groups. The high-resolution structures of the thionated cyclic pentapeptides indicated the coexistence of βII'-type and γ-type turns. The γ-type

turn is in equilibrium between an open (indicated by the NOE between the Ala⁴HN-Ala⁵HN protons) and a closed form (suggested by the low temperature coefficient of Ala⁵HN, which is indicative of intramolecular hydrogen bonding (Fig. 1B)) as demonstrated by Kessler and Marshall *et al.*¹⁵ The thionation of D-Ala¹, Ala², Ala⁴ and Ala⁵ resulted in cyclic pentapeptides (1, 2, 4 and 5) with similar global conformations but different φ and ψ values (ESI†), where the βII'-type turn is centered about D-Ala¹-Ala² and the γ-turn is centered about Ala⁴.¹⁵ However, the thionation of Ala³ resulted in a conformation with the βII'-type turn centered about Ala²-Ala³ and the γ-turn centered about Ala⁵ (3).

The true externally oriented (solvent exposed) C=O groups in the cyclic pentapeptide are at D-Ala¹, Ala² and Ala⁴, and upon thionation did not perturb the conformation of the parent peptide. However, thionation at the internally oriented C=O groups, in the case of Ala³ (3), completely changes the conformation of the peptide; this is also observed for Ala⁵ (5), albeit to a lesser extent. These results indicate that thioamide substitution at a site where the C=O group does not engage in intramolecular hydrogen bonding can retain the conformation of the parent macrocyclic peptide. Thus, we note that thioamides can be valuable probes for identifying the hydrogen bond involved in stabilizing the conformation of a macrocycle.^{14f} However, we were intrigued by the “frame-shifted” conformation of 3 and wondered whether this was a result of the enhanced hydrogen bond (H-bond) donating properties of the thioamide, as noted by Kessler *et al.*^{13d} To understand this behavior, we analysed the temperature coefficients of the amide protons in these peptides (Fig. 1B) along with the ¹H chemical shifts. The upfield shift of the amide resonances in Ala³HN and Ala⁵HN indicate their involvement in intramolecular hydrogen bonding, as opposed to D-Ala¹HN, Ala²HN, and Ala⁴HN in all the peptides except 3 (ESI†).

It was interesting to note that despite the possibility of Ala²HN being involved in a γ-turn with Ala⁵CO in 1,¹⁶ there was no enhancement in the thioamide H-bond donation and structural alteration. Similarly, the temperature coefficients of the thioamide HN in 2 and 4 did not indicate a significant increase in the thioamide H-bond donation. This suggests that the increased thioamide H-bond donor propensity¹⁷ is not the driving force for the structural alteration in 3 and 5, instead, the van der Waals interactions between S (due to the increased size of sulfur and the longer C=S bond) and the surrounding atoms are crucial in dictating the conformation of the peptide, as predicted from the computational studies of thioamides containing dipeptides by Lipton *et al.*^{11a} Thus, the internally oriented Ala³CO completely flips outward on thio substitution in 3, presumably due to the 1,2 and 1,3-diaxial strain between S and the flanking Ala³ and Ala⁴C^β. However, owing to the flanking heterochiral residues, thio substitution of Ala⁵CO allows for a partial flip of the thioamide bond.

Preliminary indication of the structural rigidity in cyclic peptides

To understand whether the thioamide substitution results in reduced flexibility of the cyclic peptide backbone, we

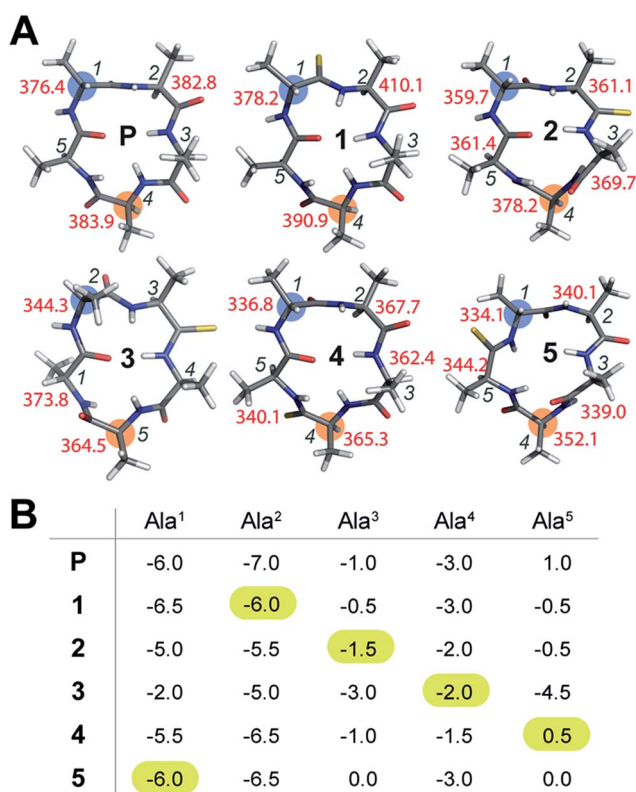


Fig. 1 (A) Solution conformation of cyclo(aA₄) (P) and its thio analogs (1–5). The T₁ values of the resolved C^α are indicated adjacent to the residues. The *i* + 1 residue in the β-turn, and the residue about which the γ-turn is centered, are highlighted. (B) The amide proton temperature coefficients (in ppb K⁻¹) determined from the ¹H NMR spectra acquired between 298 K and 323 K. The value for the thioamide NH is highlighted.



determined the ^{13}C spin-lattice relaxation time (T_1) of the backbone C^α in these cyclic peptides, which provides qualitative information on the segmental motion of amino acids in peptides.¹⁸ It was intriguing to note that in all the peptides, the $i + 1$ residue in the β -turn displayed the lowest T_1 compared to the other residues in the same macrocycle indicating its segmental rigidity (Fig. 1A) (comparison of the intermolecular T_1 is not feasible due to differences in the concentration and viscosity of the samples).^{18a} Subsequently, we compared the T_1 of the $i + 1$ residue with the T_1 of the alanine about which the flexible γ -turn is centered (highlighted in Fig. 1A). Curiously, we observed that this difference in T_1 was smallest in **1** compared to all other thio analogs. Additionally, the difference in T_1 within the residues in **P** was also less than that in the thio analogs, indicating comparable flexibility in the different segments of **P**. This led us to speculate that thioamide substitution presumably assists in increasing the (segmental) structural rigidity in cyclic peptides.

Evidence of enhanced structural rigidity in aqueous solution

To validate our observation of enhanced structural rigidity in peptide macrocycles through thionation in aqueous solution (due to the hydrogen bonding properties of water, it effectively solvates the intramolecular H-bonds in the peptides, leading to greater flexibility), we resorted to a moderate affinity cyclic peptide integrin antagonist cyclo(RGDfV) (**6**),^{16b} which is also known to adopt a $\beta\text{II}'$ -type turn about D-Phe-Val and a γ -turn about Gly as observed in **1**. Interestingly, we noted that **6** displays two conformations in the ratio 1 : 2 on the NMR time scale (Fig. 2A and ESI†) at 25 °C, making it a suitable model to test our hypothesis. Thus, we synthesized a thio-scan library of **6** and assessed the conformations by NMR. Since thioamides undergo sulfur to oxygen exchange under acidic conditions, the orthogonally protected cyclic peptides were initially purified and subjected to global deprotection using an optimized cleavage cocktail of TFA/DCM/TIPS/ H_2O (62.5 : 32.5 : 2.5 : 2.5).¹⁹ Although we were successful in obtaining all the orthogonally protected thioamidated peptides, c(RGDfV^t) (**8**) underwent spontaneous acid catalyzed degradation.¹⁹ To analyze whether the flanking amino acids of the thioamide bond have a role to play in the degradation, we synthesized three additional cyclic peptides with identical chirality but different functional groups: c(RGDfA^t), c(KGDfV^t) and c(NleGDfV^t) (Nle: norleucine). It was surprising to note that all of these protected cyclic peptides underwent spontaneous acid catalyzed degradation as observed in **8** (ESI†). This suggested that the backbone conformation of the peptide has a key role in degradation, rather than the amino acid side chains flanking the thioamide bond. It is worth noting at this point that the model cyclic peptides (**1–5**) did not show any trace of thio to oxo conversion even after 24 months at 25 °C in DMSO solution, indicating the stability of the thiopeptides in an oxidizing environment.

Adding to our excitement, all the thio-variants of **6** displayed a single conformation on the NMR time scale at room temperature, unlike the all-amide **6** (Fig. 2A). Variable temperature ^1H

NMR, recorded from 5 °C to 50 °C, also did not reveal the existence of any minor conformers in slow exchange in **7–11**, (ESI†) directly demonstrating the rigidifying role of the thioamides in the peptide macrocycles, irrespective of the substitution site.

To demonstrate the uniform behavior of the thioamides in dictating the conformation of the cyclic peptide, we analyzed the solution conformations of **7–11** (Fig. 2B). It was encouraging to note that the conformation of these thionated RGD peptides reflects the conformation of the model alanine peptides with identical patterns of thioamide substitution. Furthermore, as observed in **3**, **9** displayed a “frame-shifted” conformation due to the steric bulk associated with the $\text{C}=\text{S}$ group and not the improved thioamide H-bonding ability.¹⁷ Despite the involvement of the GlyHN thioamide in a β -type turn in **9**, its temperature coefficient is -6.8 ppb K^{-1} , indicating the absence of intramolecular hydrogen bonds, as opposed to D-PheHN (-2.4 ppb K^{-1}) and ArgHN (-1.6 ppb K^{-1}), which are involved in γ -turns (Fig. 2B). Likewise, the thioamide in **11** (D-PheHN) is also solvent exposed (-5.0 ppb K^{-1}) and was not involved in stabilizing the γ -turn about Asp with GlyCO.

We were quite excited to observe that unlike *N*-methylation, which introduces severe conformational heterogeneity into macrocyclic peptides *via cis-trans* isomerism (due to the reduced *cis-trans* rotational barrier and the pseudoallylic strain between the *N*-methyl and the flanking C^β groups within two homochiral residues),²⁰ thioamides lower the conformational heterogeneity by reducing the conformational space of the cyclic peptide, which is guided by the van der Waals repulsion between S and the surrounding atoms and the increased *cis-trans* rotational barrier of the thioamide bond.²¹ Furthermore, despite structural alteration by thionation of the internally oriented amide bonds (**3** and **9**), the structural rearrangement results in a parent-like conformation, but with an altered side chain identity. These two observations suggested that (i) thioamides are valuable tools to reduce the conformational entropy in peptide macrocycles and (ii) thioamide substitution is an ideal modification for spatial screening²² of peptide sequences in search of bioactive conformations.

Thioamide incorporation yields superactive pro-angiogenic integrin antagonists

To validate our hypothesis and demonstrate the potential of thioamides in delivering selective and high-affinity ligands, we chose to target the cell-adhesion receptors, integrins.²³ Integrins mediate a diverse set of cellular functions by binding to extracellular matrix components through a set of 24 distinct integrin heterodimers, formed by a combination of 18 α -subunits and 8 β -subunits. We were keen to simultaneously target the pro-angiogenic $\alpha\text{v}\beta3$, $\alpha\text{v}\beta5$ and $\alpha5\beta1$ integrins, which have partially overlapping ligand specificity and are associated with migration, proliferation and survival in tumor cells.^{23b} We sought to develop subtype selective integrin antagonists because: (a) these integrins are validated drug-targets for treating cancer, (b) pre-organization of the pharmacophore (–RGD– sequence) is known to modulate the integrin subtype





Fig. 2 (A) ¹H NMR spectra of cyclo(RGDfV) (6) and its thio-analogs 7–11. The γ -CH₃ of Val in both the conformers (A and B) of 6 is shown. (B) The solution structures of 7–11 deduced from 2D ¹H NMR spectroscopy in aqueous conditions. (C) ¹H NMR spectra of cyclo(RGDfV) (12) showing two conformers. (D) Solution structures of spatial screen analogs of 9 (9a–9d). The temperature coefficients of the amide protons (ppb K⁻¹) are shown and the asterisk denotes the site of the D-amino acid (Gly in 9b). Significant resonance overlap precluded the structure determination of 6 and 12. The hydrogen atoms are omitted for the sake of clarity.

selectivity, and (c) the *N*-methylated cyclic peptide, cilengitide (**Cilen**), unfortunately failed in phase III clinical trials against glioblastoma.²⁴

The inhibitory potency of the peptides to block the association between the extracellular matrix and the integrins overexpressed on cell-surfaces was determined using an *in vitro* competitive solid phase binding assay.²⁵ We assessed the affinity of these peptides against the pro-angiogenic $\alpha v\beta 3$, $\alpha v\beta 5$ and $\alpha 5\beta 1$ integrins, and their selectivity against their $\alpha IIb\beta 3$ integrin, which plays an important role in platelet aggregation (Table 1).²⁶ The parent peptide, 6, showed a moderate affinity towards the pro-angiogenic integrins due to the conformational flexibility, which does not allow the static presentation of the

pharmacophores responsible for tight binding. On the contrary, the conformationally rigid thio analogs yielded very interesting results. 7, which can be directly compared with **Cilen**, where an *N*-methylated amide bond is substituted with a thioamide bond, displayed a higher IC₅₀ than 6 against $\alpha v\beta 3$. However, remarkably it showed a better IC₅₀ than **Cilen** against $\alpha v\beta 5$ and $\alpha 5\beta 1$ in the *in vitro* assays with purified integrins.

To validate our *in vitro* data and determine the efficacy of the peptides against the pro-angiogenic integrins in a complex cellular milieu, we subjected the peptides to a competitive cell-adhesion assay (Table 1) utilizing MDA-MB-231 human breast cancer cells expressing $\alpha v\beta 5$ integrins, and U-87 MG human glioblastoma cells expressing $\alpha v\beta 3$, $\alpha v\beta 5$ and $\alpha 5\beta 1$ integrins.²⁷



Table 1 *In vitro* IC₅₀ (nM) values of the peptides against α v β 3, α v β 5, α 5 β 1 and α IIb β 3 integrins determined from competitive ELISAs. The efficacy (*in cellulo* IC₅₀ in nM) was determined from the competitive cell-adhesion to vitronectin with α v β 5 expressing MDA-MB-231 breast cancer cells and α v β 3, α v β 5 and α 5 β 1 expressing U-87 MG glioblastoma cells. MCF7 breast cancer cells were taken as negative control in the cell-adhesion assay, where the IC₅₀ for all the analogs was in the high μ M range (data not shown). $n = 5 \pm$ SEM

Compound	<i>In vitro</i>				<i>In cellulo</i>		
	α v β 3	α v β 5	α 5 β 1	α IIb β 3	MDA-MB-231	U-87 MG	α v β 3 α v β 5 ^a
6	140 \pm 95	516 \pm 117	164 \pm 134	>10 ⁵	>10 ⁵	>10 ⁵	>10 ⁵
7	372 \pm 52	0.7 \pm 0.2	1.3 \pm 0.6	>10 ⁴	4 \pm 2	326 \pm 97	260.4
9	>10 ⁵	>10 ⁴	53 \pm 42	>10 ⁴	>10 ⁵	>10 ⁵	>10 ⁵
10	252 \pm 200	>10 ⁵	>10 ⁵	>10 ⁵	>10 ⁵	>10 ⁵	>10 ⁵
11	72 \pm 63	1.3 \pm 1	62 \pm 45	>10 ⁵	4.2 \pm 4	96 \pm 77	93.6
9a	169 \pm 100	0.5 \pm 0.3	23 \pm 12	>10 ⁵	11 \pm 9	40 \pm 28	84.5
9b	0.2 \pm 0.1	1.6 \pm 0.3	2 \pm 0.4	>10 ⁵	1 \pm 0.1	1.6 \pm 0.6	0.32
9c	>10 ⁵	>10 ⁴	461 \pm 246	>10 ⁵	>10 ⁵	>10 ⁵	>10 ⁵
9d	584 \pm 504	>10 ⁴	104 \pm 95	>10 ⁵	>10 ⁵	>10 ⁵	>10 ⁵
12	166 \pm 98	>10 ⁴	48 \pm 20	>10 ⁵	>10 ⁵	>10 ⁵	>10 ⁵
Cilen	0.6 \pm 0.4	3 \pm 2	6 \pm 1	>10 ⁵	1.2 \pm 1	3 \pm 2	1.8

^a Multiplication of *in vitro* IC₅₀ against these integrins.

Despite the moderate affinity of **6** towards the pro-angiogenic integrins *in vitro*, it failed to show any efficacy at all in the cell-based assay, which could be attributed to the off-target binding associated with the conformational flexibility in **6**. On the other hand, we observed a remarkable correlation between the *in vitro* affinity of the thioamidated peptides against the purified integrins and their efficacy *in cellulo* (α v β 5 with MDA-MB-231, and α v β 3 and α v β 5 with U-87 MG). This suggests the high specificity and selectivity of the thioamidated analogs towards the pro-angiogenic integrins in the presence of complex cellular components, which can otherwise sequester the peptides, reducing their efficacy.

We were quite excited to note that as detected in the solid phase assay, **7** strongly competed with vitronectin (Vn) in inhibiting the adhesion of MDA-MB-231 cells, suggesting its strong affinity towards α v β 5. A relatively lower potency of **7** was observed when inhibiting U-87 MG cell-adhesion to Vn (Vn binds to α v β 3 and α v β 5),^{23a} which is in accord with the lower affinity of **7** towards α v β 3. **11** was the other member of the thio-scan library that showed better affinity than **6** towards the pro-angiogenic integrins *in vitro*, which was also reflected by its efficacy in the cell-adhesion assay.

The lowest affinity towards the pro-angiogenic integrin α v β 3 was obtained for **9** with thionation at Arg, which led to a complete reshuffling of the residues about which both the turns in **9** were centered (Fig. 2B), resulting in a total loss of its efficacy. However, since **9** displayed a β II'- and γ -type turn, we hypothesized that a subsequent spatial screening by altering the spatial position of the pharmacophore on the cyclic peptide backbone might improve the affinity and efficacy of the resulting peptides.

The spatial screening of **9** resulted in **9a–9d** (Fig. 2C), of which **9c** and **9d** did not show any appreciable change in affinity and efficacy against the pro-angiogenic integrins. However, **9a** displayed a remarkable improvement in affinity, and the most exciting observation was the dramatically enhanced ($\sim 10^5$ fold)

affinity and efficacy of **9b** in comparison to **9**, by simple alteration in the spatial positioning of the pharmacophores on the thioamide backbone. To emphasize the effect of thio substitution, we synthesized compound **12** (a non-thio analog of **9b**) (Fig. 2C), which showed moderate affinity only towards α v β 3 and α 5 β 1 integrins with no efficacy in the cell-adhesion assay. Additionally, we noted that **12** also displayed two conformers (1 : 2) on the NMR time scale, as observed in **6**, whereas **9b** (along with **9a**, **9c** and **9d**) showed a single conformation, further reinforcing the rigidifying role of thioamides in peptide macrocycles.

Interestingly, the backbone conformations of **9** and the spatial screen analogs (**9a–9c**) were comparable, except for **9d**, which did not undergo the conformational switch (Fig. 2D). This is due to the absence of C ^{β} in glycine resulting in its ability to adopt a left-handed α -helical conformation,²⁸ allowing the conformation of **9d**. This result, along with the high temperature coefficient value of the thioamide in **9d**, re-emphasizes the fact that the van der Waals interactions between the C=S group and the surrounding atoms are critical in dictating the conformation of thioamidated macrocycles.

Taking into consideration the *in vitro* and *in cellulo* activity of the synthesized peptides (Table 1), we then performed docking simulations to understand the structure activity relationships of the thioamidated peptides with respect to the α v β 3 integrin, for which the crystal structure in complex with **Cilen** is already known (Fig. 3A).²⁹ The most potent thioamidated peptide **9b** and **Cilen** display a similar bound pose, the similarity being closest at the –RGD– motif (Fig. 3D) (ESI[†]). The important electrostatic interactions mediated by Arg and Asp of the –RGD– motif and the hydrophobic contacts mediated by Gly and the aromatic ring of Phe are also maintained in **9b**.²⁹ Additionally, **9b** shows an aromatic hydrogen bond (C–H \cdots O interaction) between H^c of Phe and one of the carboxylate oxygens of (β)-Asp126 (Fig. 3B). The C–H \cdots O interactions are very weak but play an important role in protein–ligand binding events.³⁰ This



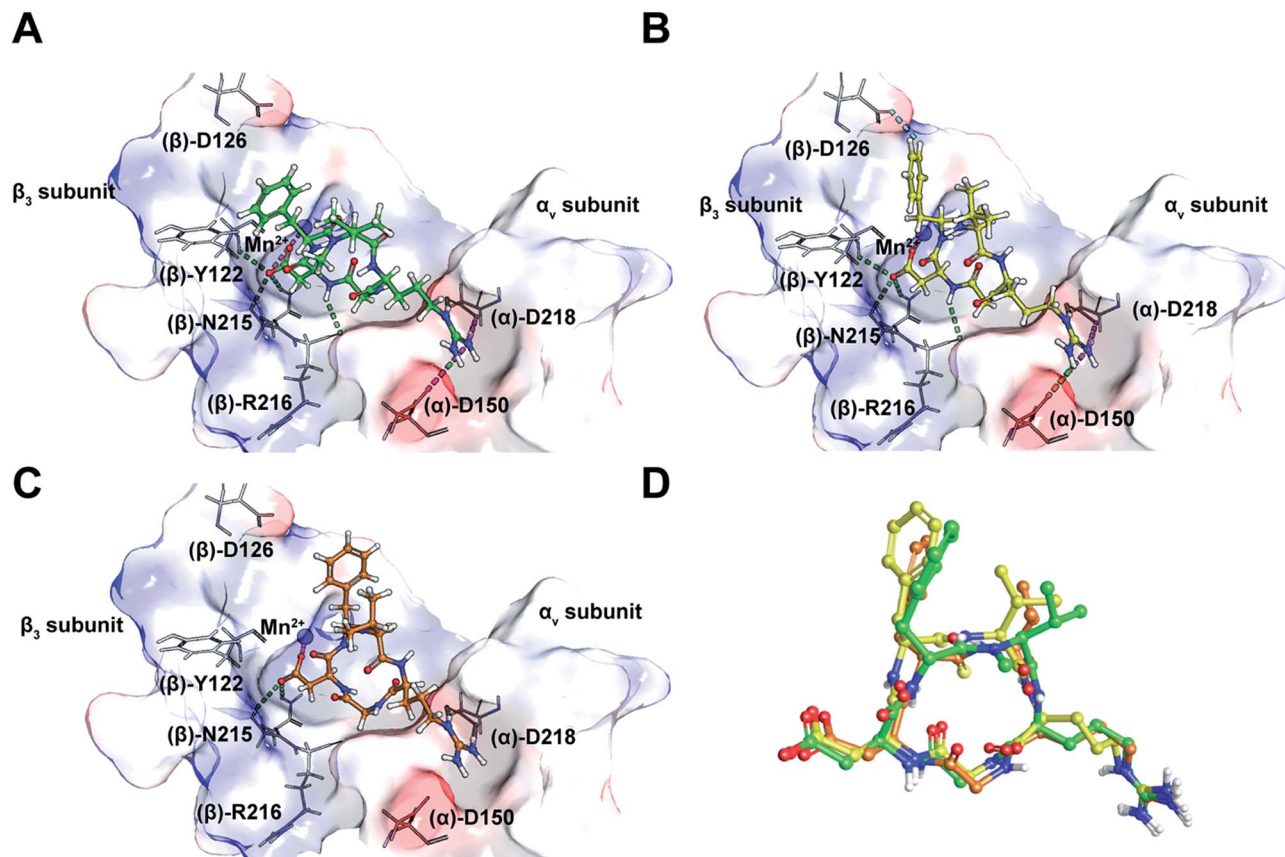


Fig. 3 (A) The interaction of cilengitide (shown as a green ball and stick model) bound to the $\alpha_5\beta_3$ integrin in the PDB entry 1L5G. (B) The interaction of docked **9b** (shown as a yellow ball and stick model) with the $\alpha_5\beta_3$ integrin. (C) The interaction of docked **7** (shown as an orange ball and stick model) with the $\alpha_5\beta_3$ integrin. (D) An overlay of the docked poses of **9b** and **7** onto that of **Cilen** co-crystallized with the $\alpha_5\beta_3$ integrin in 1L5G. The green, magenta and cyan dashed lines represent hydrogen bonds, salt bridges and aromatic hydrogen bonds, respectively. The binding site of the protein is shown as a surface representation and the carbon atoms of the protein residues are shown in grey. Oxygen, nitrogen, hydrogen and sulphur atoms are shown in red, blue, white and yellow, respectively. Please see the ESI† for a detailed description of the interactions between the various ligands and the $\alpha_5\beta_3$ integrin.

extra C-H \cdots O interaction, together with the improved van der Waals interactions (mediated by a S atom as discussed later), possibly contributes to the slightly improved inhibitory potency of **9b**.

The docked poses of all the other thioamidated peptides do not show such a C-H \cdots O interaction, except for **11**. However, the lower potency of **11** stems from the loss of some crucial interactions with the receptor mediated by the -RGD- motif (ESI†). Likewise, all other analogs except **9b** show the loss of one or multiple electrostatic interactions with the receptor. The substitution of O with S provides a greater contact surface area between the peptide and the receptor, which leads to improved van der Waals interactions mediated by the C=S group compared to the C=O group.¹⁰ Although we did not notice any direct hydrogen bonds between the protein and S atom,³¹ we cannot fully negate the possibility of any water mediated hydrogen bonding between the S atom and the receptor.³²

Interestingly, **9b** and **7**, which differ only in the chirality about the phenylalanine, show comparable affinity for $\alpha_5\beta_5$ and $\alpha_5\beta_1$, but $>10^3$ fold difference in $\alpha_5\beta_3$ affinity. Docking of **7** revealed that this difference is due to the smaller distance

between Arg and Asp C ^{β} compared to **Cilen** and **9b**, leading to the loss of end-on hydrogen bonding between Arg and (α)-Asp150 (Fig. 3C) and the side chain mediated interaction of Asp with the backbone of (β)-Tyr122. Additionally, the backbone mediated interaction of Asp and (β)-Arg216 is also lost due to a flip in the Gly-Asp amide bond (Fig. 3D). This result demonstrates how an inversion of chirality drastically affects the overall efficacy of a macrocyclic peptide.²⁶ Lastly, our docking results were nicely validated by **9**, which did not yield any meaningful binding mode (ESI†). The complete loss in its affinity could be rationalized by the absence of biologically relevant interactions mediated by the Asp and Arg side chains with $\alpha_5\beta_3$. Thus, our *in silico* analysis corroborates the *in vitro* and *in cellulo* results.

Thionated macrocyclic peptides show minimal non-specific cytotoxicity and enhanced serum half-life

Since integrin antagonists are known to inhibit the proliferation of cancer cells,³³ we assessed the effect of a subset of these analogs on the proliferation of MDA-MB-231 and U-87 MG cells and simultaneously determined whether the incorporation of



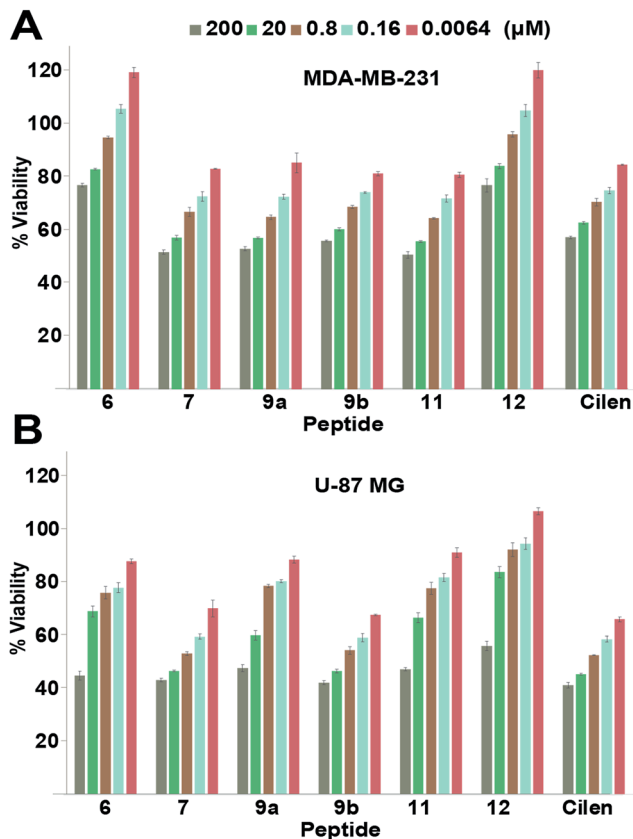


Fig. 4 Proliferation of (A) breast cancer cells and (B) glioblastoma cells at 48 h; $n = 4 \pm \text{SEM}$. Note the slow dose-dependent decrease in proliferation and minimal cytotoxicity even with a 2×10^4 fold increase in initial concentration. Please refer to the ESI† for the entire dose-dependent study.

thioamides in peptide macrocycles leads to unspecific cytotoxicity, which is of paramount importance in lead design (Fig. 4). Although in both the cell types we observed a moderate dose-dependent decrease in cell viability at 48 h, a very high concentration of the thio-analogs and **Cilen** was required to achieve the half maximal inhibitory concentration (IC_{50}). This clearly suggested that incorporation of thioamides into macrocyclic peptides does not result in unspecific cytotoxicity even after 48 h, which is an important concern for the use of thioamides in lead design. We also noted that glioblastoma cells were more sensitive towards these antagonists (**Cilen**, **9b** and **7**) than breast cancer cells, presumably due to the expression of all the pro-angiogenic integrins, despite the known resistance of U-87 MG cells against detachment-induced apoptosis.²⁷ Furthermore, as expected the least efficacious flexible cyclic peptides **6** and **12** displayed minimal detachment-induced apoptosis in breast cancer cells compared to the potent thioanalogs.

One major drawback to translating peptides as drugs is their inherent metabolic instability due to the action of endo- and exoproteases.^{4b} Thus, we determined the stability of the unmodified peptide macrocycles, **Cilen** (*N*-methylated peptide) and the most potent thioanalogs in human serum *ex vivo* for

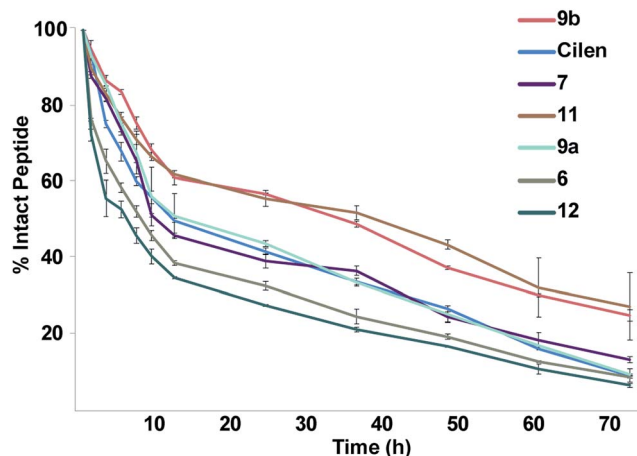


Fig. 5 The *ex vivo* metabolic stability of the macrocyclic peptides in freshly isolated human serum for 72 h; $n = 6 \pm \text{SEM}$. Note the rapid degradation of the unmodified cyclic peptides **6** and **12**. Even at 72 h, 1/4 of the thioamidated peptides **9b** and **11** are intact.

72 h (Fig. 5). As expected, **6** showed slightly better metabolic stability ($t_{1/2}$: 9 h) than **12** ($t_{1/2}$: 7 h) due to the presence of *D*-Phe. It is interesting to note the significant improvement in metabolic stability of all the thioamidated analogs throughout the course of the experiment as observed previously in linear thio-nated peptides.^{12a,b,e,f} Since these analogs have thionation at different amino acids, we speculate that thioamidation has the potential to significantly improve the metabolic stability of macrocyclic peptides irrespective of the site and amino acid being substituted. It was also quite striking to note that **11** and **9b** showed a significantly improved serum half-life ($t_{1/2}$: 36 h each) compared to that of the clinical candidate **Cilen** ($t_{1/2}$: 12 h). These data collectively suggest that thioamidation could have a stronger influence in improving the metabolic stability of macrocyclic peptides than *D*-amino acid incorporation.

Conclusions

In summary, we have demonstrated that macrocyclic peptides exhibit conformational flexibility in both apolar (model alanine peptides) and polar environments (integrin antagonists), which tends to reduce their bioactivity.^{3a,b,4c} We observed that C=O to C=S substitution in peptide macrocycles dramatically reduces the conformational flexibility while minimally perturbing the global conformation as observed in the model alanine, thio-scan and spatial screen integrin antagonists. Thus, thioamide incorporation leads to predictable changes in the conformation of the peptide backbone, unlike other amide bond modifications. Thioamide incorporation fine tunes the 3D-pharmacophore orientation, which qualifies thioamides as important bioisosteric mimics of peptide bonds.³⁴ The remarkable correlation between the *in vitro* and *in cellulo* data against the pro-angiogenic integrins demonstrates the specificity of these thioamidated macrocyclic peptides against their endogenous target, which can be extended to other bioactive peptides as well. Thioamidated macrocyclic peptides are non-



cytotoxic and, presumably due to their marked conformational rigidity, display enhanced stability against degradation by proteases,³⁵ leading to their increased therapeutic efficacy. Due to the adoption of well-defined structures (turns) caused by increased conformational rigidity, thioamides might have the potential to increase the membrane permeability of cyclic peptides.³⁶

It is curious to note that few thioamide containing peptide natural products, such as thioviridamide, thioholgamides, and their related analogs,³⁷ which are ribosomally synthesized and post-translationally modified (RiPP), or are of non-ribosomal origin (closthioamide),³⁸ show potent antibacterial and anti-neoplastic activity compared to their all-oxo-amide variant.^{38a} Thus, the potent biological activity in these compounds possibly arises from a combination of conformational restriction, increased metabolic stability and enhanced cellular permeability by thio substitution. Furthermore, as observed in **10**, the conformational restriction imparted by the thioamidation of glycine is also predicted to stabilize the local conformation in the vicinity of the active site in methyl-coenzyme M reductase, leading to the increased half-life of the protein.³⁹ Therefore, we strongly believe that this single atom substitution, by successfully overcoming the two major drawbacks of peptides *i.e.* conformational flexibility and metabolic instability, will accelerate the discovery of peptide-based drugs and antibacterials.⁴⁰ All the efficacious thioamidated macrocyclic peptides reported here have the potential to block angiogenesis *in vivo* and are currently being investigated.

Conflicts of interest

There are no conflicts of interest to declare.

Acknowledgements

The authors acknowledge the DBT through the project 6242/P-17/2015 and the DST through the project SB/YS/LS-220/2013 for JC, the DBT-IISc partnership program, the DST-FIST and the Indian Institute of Science (MHRD) for funding this work. We thank the DST & DBT funded NMR and proteomics facility at the IISc. We are grateful to Prof. R. Sowdhamini for her generous support in providing access to the Schrödinger suite of programs, Prof. S. P. Sarma for help with NMR relaxation experiments and Prof. D. Pal for access to Discovery Studio. Prof. A. Rangarajan and Prof. K. Somasundaram are acknowledged for their kind gift of MDA-MB-231, MCF7 and U-87 MG cell lines.

References

- (a) C. Heinis, *Nat. Chem. Biol.*, 2014, **10**, 696; (b) A. K. Yudin, *Chem. Sci.*, 2015, **6**, 30; (c) L. J. Walport, R. Obexer and H. Suga, *Curr. Opin. Biotechnol.*, 2017, **48**, 242; (d) A. Zorzi, K. Deyle and C. Heinis, *Curr. Opin. Chem. Biol.*, 2017, **38**, 24.
- E. M. Driggers, S. P. Hale, J. Lee and N. K. Terrett, *Nat. Rev. Drug Discovery*, 2008, **7**, 608.

- (a) V. J. Hruby, *Life Sci.*, 1982, **31**, 189; (b) S. Jackson, W. Degrado, A. Dwivedi, A. Parthasarathy, A. Higley, J. Krywko, A. Rockwell, J. Markwalder, G. Wells, R. Wexler, S. Mousa and R. Harlow, *J. Am. Chem. Soc.*, 1994, **116**, 3220; (c) T. A. Hill, N. E. Shepherd, F. Diness and D. P. Fairlie, *Angew. Chem., Int. Ed.*, 2014, **53**, 13020.
- (a) M. Gongora-Benitez, J. Tulla-Puche and F. Albericio, *Chem. Rev.*, 2014, **114**, 901; (b) D. J. Craik, D. P. Fairlie, S. Liras and D. Price, *Chem. Biol. Drug Des.*, 2013, **81**, 136; (c) G. R. Marshall, *Tetrahedron*, 1993, **49**, 3547; (d) C. J. White and A. K. Yudin, *Nat. Chem.*, 2011, **3**, 509.
- R. J. Simon, R. S. Kania, R. N. Zuckermann, V. D. Huebner, D. A. Jewell, S. Banville, S. Ng, L. Wang, S. Rosenberg, C. K. Marlowe, D. C. Spellmeyer, R. Y. Tan, A. D. Frankel, D. V. Santi, F. E. Cohen and P. A. Bartlett, *Proc. Natl. Acad. Sci. U. S. A.*, 1992, **89**, 9367.
- G. Guichard, N. Benkirane, G. Zederlutz, M. H. V. Vanregenmortel, J. P. Briand and S. Muller, *Proc. Natl. Acad. Sci. U. S. A.*, 1994, **91**, 9765.
- T. Cupido, J. Spengler, J. Ruiz-Rodriguez, J. Adan, F. Mitjans, J. Piulats and F. Albericio, *Angew. Chem., Int. Ed.*, 2010, **49**, 2732.
- J. Zhang, M. Mulumba, H. Ong and W. D. Lubell, *Angew. Chem., Int. Ed.*, 2017, **56**, 6284.
- E. Biron, J. Chatterjee, O. Ovadia, D. Langenegger, J. Brueggen, D. Hoyer, H. A. Schmid, R. Jelinek, C. Gilon, A. Hoffman and H. Kessler, *Angew. Chem., Int. Ed.*, 2008, **47**, 2595.
- A. Choudhary and R. T. Raines, *ChemBioChem*, 2011, **12**, 1801.
- (a) D. R. Artis and M. A. Lipton, *J. Am. Chem. Soc.*, 1998, **120**, 12200; (b) R. Frank, M. Jakob, F. Thuncke, G. Fischer and M. Schutkowski, *Angew. Chem., Int. Ed.*, 2000, **39**, 1120; (c) J. H. Miwa, A. K. Patel, N. Vivatrat, S. M. Popek and A. M. Meyer, *Org. Lett.*, 2001, **3**, 3373; (d) J. H. Miwa, L. Pallivathucal, S. Gowda and K. E. Lee, *Org. Lett.*, 2002, **4**, 4655; (e) A. Reiner, D. Wildemann, G. Fischer and T. Kiefhaber, *J. Am. Chem. Soc.*, 2008, **130**, 8079; (f) R. M. Culik, H. Jo, W. F. DeGrado and F. Gai, *J. Am. Chem. Soc.*, 2012, **134**, 8026; (g) J. M. Goldberg, S. Batjargal, B. S. Chen and E. J. Petersson, *J. Am. Chem. Soc.*, 2013, **135**, 18651; (h) J. M. Goldberg, X. Chen, N. Meinhardt, D. C. Greenbaum and E. J. Petersson, *J. Am. Chem. Soc.*, 2014, **136**, 2086; (i) C. R. Walters, D. M. Szantai-Kis, Y. Zhang, Z. E. Reinert, W. S. Horne, D. M. Chenoweth and E. J. Petersson, *Chem. Sci.*, 2017, **8**, 2868.
- (a) P. A. Bartlett, K. L. Spear and N. E. Jacobsen, *Biochemistry*, 1982, **21**, 1608; (b) P. Campbell and N. T. Nashed, *J. Am. Chem. Soc.*, 1982, **104**, 5221; (c) K. Clausen, A. F. Spatola, C. Lemieux, P. W. Schiller and S. O. Lawesson, *Biochem. Biophys. Res. Commun.*, 1984, **120**, 305; (d) M. Schutkowski, S. Wollner and G. Fischer, *Biochemistry*, 1995, **34**, 13016; (e) B. Zacharie, M. Lagraoui, M. Dimarco, C. L. Penney and L. Gagnon, *J. Med. Chem.*, 1999, **42**, 2046; (f) A. Bach, J. N. N. Eildal, N. Stuhr-Hansen, R. Deeskamp, M. Gottschalk, S. W. Pedersen, A. S. Kristensen and K. Stromgaard, *J. Med. Chem.*, 2011, **54**, 1333; (g) X. Chen,



- E. G. Mietlicki-Baase, T. M. Barrett, L. E. McGrath, K. Koch-Laskowski, J. J. Ferrie, M. R. Hayes and E. J. Petersson, *J. Am. Chem. Soc.*, 2017, **139**, 16688.
- 13 (a) D. B. Sherman and A. F. Spatola, *J. Am. Chem. Soc.*, 1990, **112**, 433; (b) D. Seebach, S. Y. Ko, H. Kessler, M. Kock, M. Reggelin, P. Schmieder, M. D. Walkinshaw, J. J. Bolsterli and D. Bevec, *Helv. Chim. Acta*, 1991, **74**, 1953; (c) H. Kessler, A. Geyer, H. Matter and M. Kock, *Int. J. Pept. Protein Res.*, 1992, **40**, 25; (d) H. Kessler, H. Matter, A. Geyer, H. J. Diehl, M. Kock, G. Kurz, F. R. Opperdoes, M. Callens and R. K. Wierenga, *Angew. Chem., Int. Ed.*, 1992, **31**, 328; (e) Y. Hitotsuyanagi, J. Suzuki, Y. Matsumoto, K. Takeya and H. Itokawa, *J. Chem. Soc., Perkin Trans. 1*, 1994, 1887; (f) H. Morita, Y. S. Yun, K. Takeya, H. Itokawa and O. Shirota, *Bioorg. Med. Chem.*, 1997, **5**, 631; (g) P. Jeschke, A. Harder, W. Etzel, W. Gau, G. Thielking, G. Bonse and K. Iinuma, *Pest Manage. Sci.*, 2001, **57**, 1000; (h) W. L. Lin, F. Erdmann, A. Quintero, G. Fischer and Y. X. Zhang, *Bioorg. Med. Chem. Lett.*, 2016, **26**, 5754.
- 14 J. Chatterjee, D. Mierke and H. Kessler, *J. Am. Chem. Soc.*, 2006, **128**, 15164.
- 15 (a) D. F. Mierke, M. Kurz and H. Kessler, *J. Am. Chem. Soc.*, 1994, **116**, 1042; (b) X. M. Zhang, G. V. Nikiforovich and G. R. Marshall, *J. Med. Chem.*, 2007, **50**, 2921.
- 16 (a) Z. P. Liu and L. M. Gierasch, *Biopolymers*, 1992, **32**, 1727; (b) R. Haubner, R. Gratias, B. Diefenbach, S. L. Goodman, A. Jonczyk and H. Kessler, *J. Am. Chem. Soc.*, 1996, **118**, 7461.
- 17 H. J. Lee, Y. S. Choi, K. B. Lee, J. Park and C. J. Yoon, *J. Phys. Chem. A*, 2002, **106**, 7010.
- 18 (a) J. P. Meraldi, V. J. Hruby and A. I. R. Brewster, *Proc. Natl. Acad. Sci. U. S. A.*, 1977, **74**, 1373; (b) C. H. Niu, L. G. Pease and E. R. Blout, *Biopolymers*, 1978, **17**, 115.
- 19 S. Mukherjee, H. Verma and J. Chatterjee, *Org. Lett.*, 2015, **17**, 3150.
- 20 J. Chatterjee, C. Gilon, A. Hoffman and H. Kessler, *Acc. Chem. Res.*, 2008, **41**, 1331.
- 21 K. B. Wiberg and P. R. Rablen, *J. Am. Chem. Soc.*, 1995, **117**, 2201.
- 22 T. Weide, A. Modlinger and H. Kessler, *Top. Curr. Chem.*, 2007, **272**, 1.
- 23 (a) M. Barczyk, S. Carracedo and D. Gullberg, *Cell Tissue Res.*, 2010, **339**, 269; (b) J. S. Desgrosellier and D. A. Cheresh, *Nat. Rev. Cancer*, 2010, **10**, 9.
- 24 R. Stupp, M. E. Hegi, T. Gorlia, S. C. Erridge, J. Perry, Y. K. Hong, K. D. Aldape, B. Lhermitte, T. Pietsch, D. Grujcic, J. P. Steinbach, W. Wick, R. Tarnawski, D. H. Nam, P. Hau, A. Weyerbrock, M. J. B. Taphoorn, C. C. Shen, N. Rao, L. Thurzo, U. Herrlinger, T. Gupta, R. D. Kortmann, K. Adamska, C. McBain, A. A. Brandes, J. C. Tonn, O. Schnell, T. Wiegel, C. Y. Kim, L. B. Nabors, D. A. Reardon, M. J. van den Bent, C. Hicking, A. Markivskyy, M. Picard, M. Weller, E. O. R. T. Canc, C. B. T. Consortium and C. S. Team, *Lancet Oncol.*, 2014, **15**, 1100.
- 25 C. Mas-Moruno, J. G. Beck, L. Doedens, A. O. Frank, L. Marinelli, S. Cosconati, E. Novellino and H. Kessler, *Angew. Chem., Int. Ed.*, 2011, **50**, 9496.
- 26 C. Mas-Moruno, F. Rechenmacher and H. Kessler, *Anti-Cancer Agents Med. Chem.*, 2010, **10**, 753.
- 27 J. W. Kim, F. V. Cochran and J. R. Cochran, *J. Am. Chem. Soc.*, 2015, **137**, 6.
- 28 J. S. Richardson, *Adv. Protein Chem.*, 1981, **34**, 167.
- 29 J. P. Xiong, T. Stehle, R. G. Zhang, A. Joachimiak, M. Frech, S. L. Goodman and M. A. Arnaout, *Science*, 2002, **296**, 151.
- 30 A. C. Pierce, K. L. Sandretto and G. W. Bemis, *Proteins: Struct., Funct., Genet.*, 2002, **49**, 567.
- 31 V. R. Mundlapati, S. Gautam, D. K. Sahoo, A. Ghosh and H. S. Biswal, *J. Phys. Chem. Lett.*, 2017, **8**, 4573.
- 32 M. S. Bodnarchuk, *Drug Discovery Today*, 2016, **21**, 1139.
- 33 A. Abdollahi, D. W. Griggs, H. Zieher, A. Roth, K. E. Lipson, R. Saffrich, H. J. Grone, D. E. Hallahan, R. A. Reisfeld, J. Debus, A. G. Niethammerl and P. E. Huber, *Clin. Cancer Res.*, 2005, **11**, 6270.
- 34 J. Vagner, H. C. Qu and V. J. Hruby, *Curr. Opin. Chem. Biol.*, 2008, **12**, 292.
- 35 K. V. Lawson, T. E. Rose and P. G. Harran, *Proc. Natl. Acad. Sci. U. S. A.*, 2013, **110**, E3753.
- 36 (a) G. Lattig-Tunnemann, M. Prinz, D. Hoffmann, J. Behlke, C. Palm-Apergi, I. Morano, H. D. Herce and M. C. Cardoso, *Nat. Commun.*, 2011, **2**, 453; (b) J. E. Bock, J. Gavenonis and J. A. Kritzer, *ACS Chem. Biol.*, 2013, **8**, 488.
- 37 (a) Y. Hayakawa, K. Sasaki, H. Adachi, K. Furihata, K. Nagai and K. Shin-ya, *J. Antibiot.*, 2006, **59**, 1; (b) L. Frattaruolo, R. Laret, A. R. Cappello and A. W. Truman, *ACS Chem. Biol.*, 2017, **12**, 2815; (c) L. Kjaerulff, A. Sikandar, N. Zaburannyi, S. Adam, J. Herrmann, J. Koehnke and R. Muller, *ACS Chem. Biol.*, 2017, **12**, 2837.
- 38 (a) T. Lincke, S. Behnken, K. Ishida, M. Roth and C. Hertweck, *Angew. Chem., Int. Ed.*, 2010, **49**, 2011; (b) V. F. Miari, P. Solanki, Y. Hieba, R. A. Stabler and J. T. Heap, *Antimicrob. Agents Chemother.*, 2017, **61**, 929.
- 39 D. D. Nayak, N. Mahanta, D. A. Mitchell and W. W. Metcalf, *eLife*, 2017, **6**, 29218.
- 40 D. W. Carney, K. R. Schmitz, J. V. Truong, R. T. Sauer and J. K. Sello, *J. Am. Chem. Soc.*, 2014, **136**, 1922.

