

PCCP

Accepted Manuscript



This is an *Accepted Manuscript*, which has been through the Royal Society of Chemistry peer review process and has been accepted for publication.

Accepted Manuscripts are published online shortly after acceptance, before technical editing, formatting and proof reading. Using this free service, authors can make their results available to the community, in citable form, before we publish the edited article. We will replace this *Accepted Manuscript* with the edited and formatted *Advance Article* as soon as it is available.

You can find more information about *Accepted Manuscripts* in the [Information for Authors](#).

Please note that technical editing may introduce minor changes to the text and/or graphics, which may alter content. The journal's standard [Terms & Conditions](#) and the [Ethical guidelines](#) still apply. In no event shall the Royal Society of Chemistry be held responsible for any errors or omissions in this *Accepted Manuscript* or any consequences arising from the use of any information it contains.

Delineating the conformational flexibility of trisaccharides from NMR spectroscopy experiments and computer simulations

Mingjun Yang,^{1#} Thibault Angles d'Ortoli,^{2#} Elin Sävén,² Madhurima Jana,^{1,3} Göran Widmalm^{2*},
Alexander D. MacKerell, Jr.^{1*}

¹Department of Pharmaceutical Sciences, School of Pharmacy, University of Maryland,
Baltimore, Maryland 21201

²Department of Organic Chemistry, Arrhenius Laboratory, Stockholm University, S-106 91
Stockholm, Sweden

³Department of Chemistry, National Institute of Technology Rourkela, Odisha, India 769008

#M.Y. and T.A.d'O. contributed equally to this work.

*Corresponding authors: alex@outerbanks.umaryland.edu and goran.widmalm@su.se

KEYWORDS

J coupling, effective distance, enhanced sampling, CHARMM, replica exchange, Karplus equation

ABSTRACT

The conformation of saccharides in solution is challenging to characterize in the context of a single well-defined three-dimensional structure. Instead, they are better represented by an ensemble of conformations associated with their structural diversity and flexibility. In this study, we delineate the conformational heterogeneity of five trisaccharides via a combination of

experimental and computational techniques. Experimental NMR measurements target conformationally sensitive parameters, including J couplings and effective distances around the glycosidic linkages, while the computational simulations apply the well-calibrated additive CHARMM carbohydrate force field in combination with efficient enhanced sampling molecular dynamics simulation methods. Analysis of conformational heterogeneity is performed based on sampling of discrete states as defined by dihedral angles, on root-mean-square differences of Cartesian coordinates and on the extent of volume sampled. Conformational clustering, based on the glycosidic linkage dihedral angles, shows that accounting for the full range of sampled conformations is required to reproduce the experimental data, emphasizing the utility of the molecular simulations in obtaining an atomic detailed description of the conformational properties of the saccharides. Results show the presence of differential conformational preferences as a function of primary sequence and glycosidic linkage types. Significant differences in conformational ensembles associated with the anomeric configuration of a single glycosidic linkage reinforce the impact of such changes on the conformational properties of carbohydrates. The present structural insights of the studied trisaccharides represent a foundation for understanding the range of conformations adopted in larger oligosaccharides and how these molecules encode their conformational heterogeneity into the monosaccharide sequence.

Introduction

Saccharides, as well as various glycoconjugates, are essential components in a broad range of biological processes. They serve both structural and functional roles as molecular scaffolds, energy storage units, post-translational modifications, molecular recognition motifs, and

modulatory factors, among others.¹ In addition, these molecules have industrial and biopharmaceutical applications such as biofuels,² biocompatible and biodegradable materials,³ human vaccines design,⁴⁻⁶ and excipients in drugs.^{7, 8} The monosaccharides are connected together to form oligo- or polysaccharides through the O-glycosidic linkages. Therefore, the conformation of saccharides can be characterized by the dihedral angles about the linkages.⁹⁻¹⁴ The intriguing relationship between functional variation and conformational heterogeneity of saccharides has stimulated intensive studies using both experimental and simulation approaches in recent years.^{9, 13-18}

The structure of saccharides is better characterized as an ensemble of conformations in solution instead of one well-defined state because of the intrinsic flexibility along the glycosidic linkages, presenting challenges to both experimental and theoretical studies. NMR spectroscopy is the most widely used experimental techniques to provide distance or dihedral distributions, lifetimes and relaxation rates of specific states or processes in saccharides.^{19, 20} These measurements can characterize the accessible range of conformational space or kinetics of a conversion for flexible saccharide molecules. However, a detailed atomic representation from these studies is difficult to obtain. To overcome this, computational simulations can complement experiments to describe conformational states at an atomic level of detail. In practice, this represents a synergistic approach in which conformational information from simulations is validated by the experimental methods, allowing for improvements in the computational methods with the obtained atomistic models stimulating the design and application of novel experimental analysis from which an improved understanding of the structure-function relationship encoded in saccharides may be obtained.

In this work, we aim to delineate the conformational heterogeneity encoded in different trisaccharides that constitute the structural elements in more complicated oligo- or polysaccharides. To this end, five representative trisaccharides with different monosaccharide compositions and linkage types with a common theme, viz., vicinal disubstitution either as linear (1→2),(1→3)-linked or representing branched structures by substituting a monosaccharide with (1→2)[(1→3)- or (1→3)[1→4]-linked glucosyl residues, were subjected to combined experimental and computational studies (Figure 1). The five trisaccharides were previously analyzed to different extents using molecular mechanics conformational searches, Monte Carlo or molecular dynamics simulations in conjunction with NMR spectroscopy experiments.²¹⁻²⁶ However, further improvements in understanding the conformational properties of these saccharides can be attained due to the advent of improved force fields for carbohydrates,²⁷⁻³³ computational enhanced sampling techniques³⁴⁻³⁶ and novel NMR experiments^{37, 38} in conjunction with further developed Karplus-type relationships³⁹ that allow for interpretation of transglycosidic heteronuclear $^3J_{\text{CH}}$ coupling constants and of homonuclear $^3J_{\text{CC}}$ couplings. To this end, site-specifically ^{13}C -labeled versions of compound **3** were synthesized, namely isotopologues having carbon-13 atoms at C1 or C2 of the glucopyranosyl residues thereby facilitating determination of long-range $^nJ_{\text{CC}}$ across the glycosidic linkages related to both the ϕ and ψ torsion angles. In the simulations, the recently developed replica-exchange with concurrent solute scaling and biasing potential (HREST-BP) method³⁵ was employed to perform conformational sampling of the trisaccharides under the CHARMM36 (C36) force field for carbohydrates. The C36 force field has been carefully calibrated against both QM calculations and experimental measurements^{28, 30, 40} and has been successfully used for the study of (1→4)- and (1→6)-linked disaccharides and oligo-saccharides.^{9, 10, 13, 14, 35, 36}

The remainder of the paper is organized as follows. The experimental measurements are first described followed by synthesis and simulation details in the method section. The computational section includes a description of approaches by which the conformation of the trisaccharides can be defined. Results of the conformational propensity of these trisaccharides are then presented based on the NMR J coupling constants and effective proton-proton distances combined with an atomic detail interpretation of those results based on the computational data. The conformational heterogeneity is discussed in terms of the sampling along the glycosidic linkages and on the overall conformations based on clustering analysis using linkage dihedrals and Cartesian coordinates.

Experimental Section

General. The atoms in some of the middle residues are labeled by a prime and the terminal groups are denoted by a prime or a double prime (Figure 1). Glycosidic torsion angles ϕ and ψ are denoted by subscripts related to the substitution position (n) and defined by $H_1-C_1-O_n-C_n$ and $C_1-O_n-C_n-H_n$, respectively. The site-specifically ^{13}C -labeled starting materials, D-[1- ^{13}C]glucose and D-[2- ^{13}C]glucose, both 99 atom% ^{13}C , were obtained from OMICRON Biochemicals, Inc., USA.

NMR spectroscopy. NMR experiments were carried out in D_2O on trisaccharides **1** – **5** in the concentration range of 42 – 96 mM. The translational diffusion experiments were repeated 8 – 10 times. A pulse field gradient spin-echo experiment (PFG-LED)⁴¹ with a fixed diffusion time ($\Delta = 100$ ms) and a pulsed field gradient increasing linearly over 32 steps was used, ranging from 2 to 95% of the maximum gradient strength being $55.7 \text{ G}\cdot\text{s}^{-1}$. The pulsed field gradients were

calibrated using a doped water sample (1% H₂O in D₂O with 1 mg·mL⁻¹ GdCl₃) and a literature value of $1.90 \times 10^{-9} \text{ m}^2\text{s}^{-1}$ for the HDO diffusion coefficient in D₂O at 25 °C.⁴²

Measurements of transglycosidic heteronuclear carbon-proton coupling constants were performed at 30 °C on a 700 MHz Bruker AVANCE III spectrometer equipped with a 5 mm TCI Z-gradient CryoProbe. Proton-proton cross-relaxation rates were measured at 30 °C on 500 and 700 MHz Bruker AVANCE spectrometers equipped with 5 mm TCI Z-gradient CryoProbes, except for 1D NOESY experiments on compound **2** that were performed at 37 °C on a 600 MHz Bruker spectrometer, or on 600 and 900 MHz Varian Inova spectrometers equipped with a PFG triple-resonance probe and a 5 mm triple resonance ColdProbe. Translational diffusion measurements were performed on a 600 MHz Bruker AVANCE III spectrometer equipped with a 5 mm Z-gradient probe at 25 °C. Temperature calibration with MeOD-*d*₄⁴³ was carried out prior to each set of experiments.

Measurements of the transglycosidic carbon-proton coupling constants were performed with J-HMBC experiments.⁴⁴ A three-fold low-pass *J*-filter (*J* = 140 Hz, 155 Hz and 175 Hz) was used to suppress ¹*J*_{CH}. Scaling factors of approximately 13.7 and 20.6, calculated from $\kappa = \Delta/t_1^{\max}$, where Δ was at least 60% of the inverse of the smallest coupling constant to be measured, were used to scale the coupling in the indirect (*F*₁) dimension. A spectral width of 6 ppm for ¹H and 60 ppm for ¹³C were used. The experiments were performed with 2048 × 512 points and 32 scans per *t*₁ increment with the echo/antiecho method. Forward linear prediction to 1024 points in the *F*₁ dimension and subsequent zero-filling to 2048 × 8192 points was applied prior to Fourier transformation. Coupling constants were extracted from 1D-projections of the resonances of interest.

Proton-proton cross-relaxation rates were measured using 1D ^1H , ^1H -DPFGSE-NOESY and T-ROESY experiments.^{24, 45} Selective excitations of anomeric protons were enabled using 30 – 70 ms long SNOB-2 shaped pulses. For each anomeric resonance excited, 6 – 8 different mixing times between 40 ms and 310 ms were used with a relaxation delay of $> 5 T_1$. The T-ROESY spin-lock was applied with $\gamma B_1 / 2\pi$ between 2.6 and 3.4 kHz. All spectra were baseline corrected and integrated with the same limits in all mixing times.

For trisaccharide **5** additional cross-relaxation rates were determined at 278 K employing 1D ^1H , ^1H -NOESY and 1D ^1H , ^1H -STEP-NOESY experiments.⁴⁶ In these cases, selective excitation was achieved by single or double PFGSE modules utilizing 30 ms r-SNOB or i-SNOB-2 shaped pulses for the NOESY experiment and 30 – 50 ms r-SNOB shaped pulses for the STEP-NOESY experiment. The strengths of the first and second gradient pairs were 15% and 40 %, respectively, of the maximum (55.7 G cm^{-1}) for the NOESY experiments. For the STEP-NOESY, the strengths of the gradients were set to 10% or 6.5% for the first and 45% or 15% for the second excitation, respectively. During the STEP-NOESY experiment the resonance from H3 from compound **5** was selectively excited and magnetization transferred to H4 using a 3.8 kHz DIPSI-2 spin-lock with a duration of 20 ms prior to selective excitation of H4. In the STEP-NOESY experiments, zero-quantum coherences were suppressed using the scheme devised by Thrippleton et al.⁴⁷ where a 30 – 50 ms adiabatic Chirp pulse with a bandwidth of 20 kHz was applied together with a gradient pulse with 3% of the maximum power. In the NOESY experiment a 20 ms adiabatic Chirp pulse with a bandwidth of 40 kHz was used in combination with a gradient pulse at 6% of the maximum power. For the NOESY as well as the STEP-NOESY experiments, 10 – 13 cross-relaxation delays between 70 – 700 ms were collected for each of the excited spins. A spectral width of 6 ppm was sampled using 16k data points and 512

– 3072 transients were averaged. The repetition time was 8 – 10 s, i.e., in all cases longer than $5 \times T_1$. Prior to Fourier transformation, the FIDs of the 1D experiments were zero-filled to 262 k points and multiplied by an exponential line-broadening function of 2 Hz. Baseline correction was performed prior to integration which used the same integration limits for all experiments within a series. The areas of relevant peaks were divided by the area of the inverted peak and least-square fitted to a first order function yielding the cross-relaxation rate constant.

The ^{13}C NMR experiments were recorded at 290 K over 197 ppm with 65536 data points and the FIDs zero were filled to 524k data points. ^{13}C resonances had a full-width-at-half-maximum of 1.1 Hz prior resolution enhancement. To measure ^{13}C , ^{13}C coupling constants from 1D ^{13}C spectra a Lorentzian-Gaussian window function ($l_b = -1.2$ to -1.0 , $g_b = 0.35 - 0.8$) was applied. The measurements of transglycosidic $^2J_{\text{CC}}$ and $^3J_{\text{CC}}$ coupling constants were also carried out using one-dimensional INADEQUATE experiments⁴⁸ for compounds **3-c1'** and **3-c1''** or selective 1D INADEQUATE experiments⁴⁹ for compound **3-c2'/c2''**. The latter employed ^{13}C site-selective excitation with a Gaussian shaped pulse of 40 ms duration. The evolution delay, $\frac{1}{2} \times J_{\text{CC}}$ to achieve antiphase ^{13}C magnetization, was nominally set for J_{CC} with a magnitude of 6 – 8.5 Hz; an acquisition time of 4 s, 9216 – 18432 transients and 128 – 256k data points were used. Zero-filling was performed to 512k data points and an exponential line-broadening function, $l_b = 0.3$ Hz, was employed. The transglycosidic $^3J_{\text{CH}}$ coupling constants visible as additional splittings in the ^1H NMR spectra of the resonances from H2 and H3 in compounds **3-c1'** and **3-c1''**, respectively, were extracted by the J doubling methodology⁵⁰ implemented in-house by a MATLAB script.

Synthesis. The synthesis of ^{13}C -labeled variants of **3**, viz., $\beta\text{-D-[1}'\text{-}^{13}\text{C]Glc}p\text{-(1}\rightarrow\text{2)[}\beta\text{-D-Glc}p\text{-(1}\rightarrow\text{3)]-}\alpha\text{-D-Man}p\text{-OMe (3-c1'}$), $\beta\text{-D-Glc}p\text{-(1}\rightarrow\text{2)[}\beta\text{-D-[1}''\text{-}^{13}\text{C]Glc}p\text{-(1}\rightarrow\text{3)]-}\alpha\text{-D-Man}p\text{-OMe (3-c1''}$), and $\beta\text{-D-[2}'\text{-}^{13}\text{C]Glc}p\text{-(1}\rightarrow\text{2)[}\beta\text{-D-[2}''\text{-}^{13}\text{C]Glc}p\text{-(1}\rightarrow\text{3)]-}\alpha\text{-D-Man}p\text{-OMe (3-c2'/c2''}$) were synthesized as follows. A solution of donor ethyl 2,3,4,6-tetra-*O*-benzoyl-1-thio- $\beta\text{-D}$ -glucopyranoside (0.22 – 0.53 mmol, 1.5 eq) and acceptor methyl 4,6-*O*-benzylidene- $\alpha\text{-D}$ -mannopyranoside (0.15 – 0.35 mmol) in dry CH_2Cl_2 was stirred for 20 min in the presence of molecular sieves (4 Å, 0.4 g) under N_2 atmosphere. NIS (2.2 eq) followed after 15 min by TfOH (0.15 eq) were added at 0 °C. The reaction was monitored by TLC and left to stir at room temperature for 1 h. The mixture was then quenched by addition of NEt_3 (2.5 eq) and was filtered through Celite. It was then diluted with CH_2Cl_2 and washed successively with solutions of satd $\text{Na}_2\text{S}_2\text{O}_3$, brine and dried over Na_2SO_4 . The solvent was removed in vacuo and the residue thus obtained was purified by column chromatography (TLC: $R_f = 0.40$ Tol/EtOAc 3:1) to yield protected disaccharides as a white powders (78 – 86% yield). The disaccharide intermediate methyl 2,3,4,6-tetra-*O*-benzoyl- $\beta\text{-D}$ -glucopyranosyl-(1 \rightarrow 3)-4,6-*O*-benzylidene- $\alpha\text{-D}$ -mannopyranoside (0.08 – 0.14 mmol) and donor ethyl 2,3-di-*O*-benzoyl-4,6-*O*-benzylidene-1-thio- $\beta\text{-D}$ -glucopyranoside (0.16 – 0.28 mmol, 2 eq) were stirred for 10 min in dry CH_2Cl_2 with molecular sieves (4 Å, 0.2 g) at room temperature under N_2 . The reaction mixture was then cooled to 0 °C and NIS (2.6 eq) was added. TfOH (0.2 eq) was added dropwise 15 min later at the same temperature. The reaction was quenched by addition of NEt_3 after 2 h and filtered through Celite. The solution was diluted in CH_2Cl_2 and washed successively with solutions of satd $\text{Na}_2\text{S}_2\text{O}_3$, brine and dried over Na_2SO_4 . The solvent was removed in vacuo and the residue thus obtained was purified by column chromatography (TLC: $R_f = 0.75$ Tol/EtOAc 3:1) to yield protected trisaccharides as a colorless oils (72 – 78% yield).

To a solution of protected trisaccharide (0.06 – 0.09 mmol) in 80% AcOH (aq.) was added a few drops of THF. The reaction mixture was heated to 70 °C for 2 h and monitored by TLC. Once the reaction was completed, the mixture was diluted with Tol and solvents were co-evaporated. The crude oil was purified by column chromatography (TLC: Rf = 0.40 CH₂Cl₂/Acetone 3:1) to yield protected trisaccharides intermediates as colorless oils (65 – 71% yield). Tetraol methyl 2,3-di-*O*-benzoyl-*O*-β-D-glucopyranosyl-(1→2)[2,3,4,6-tetra-*O*-benzoyl-β-D-glucopyranosyl-(1→3)]-α-D-mannopyranoside (0.04 – 0.06 mmol) was dissolved in methanol (2 mL), a few drops from a 1 M solution of NaOMe in MeOH were added to reach pH = 9 and the mixture was stirred at room temperature overnight. TLC (Rf = 0.1, EtOAc/MeOH/H₂O 7:2:1) analysis indicated completion of the reaction and the solution was neutralized with Dowex-H⁺. The resin was filtered, washed with methanol and solvents were evaporated. The product methyl β-D-glucopyranosyl-(1→2)[β-D-glucopyranosyl-(1→3)]-α-D-mannopyranoside was obtained in 89 – 93% yield as white powders. The trisaccharide obtained was then purified on t-C18 Sep-Pak[®] cartridges and isolated by gel permeation chromatography using an ÄKTA[™] system equipped with a Superdex[™] column (GE Healthcare, Uppsala, Sweden). The eluent system was H₂O with 1% BuOH at a flowrate of 1 mL·min⁻¹. UV and RI detection were used to monitor elution. ¹H and ¹³C NMR data were in complete agreement with literature data.⁵¹ HRMS of **3-c1'**: [M+Na]⁺ *m/z* calculated for C₁₈¹³CH₃₄O₁₆Na 542.1773, found 542.1783, **3-c1''**: [M+Na]⁺ *m/z* calculated for C₁₈¹³CH₃₄O₁₆Na 542.1773, found 542.1788, **3-c2'/c2''**: [M+Na]⁺ *m/z* calculated for C₁₇¹³C₂H₃₄O₁₆Na 543.1806, found 543.1824.

Computational Details

Molecular dynamics (MD) simulations were performed with the program CHARMM⁵² under the CHARMM36 additive force field for carbohydrates^{28, 30, 40} and the CHARMM TIP3P

water model.⁵³⁻⁵⁵ Each one of the five trisaccharides was solvated in a $32\text{\AA}\times 32\text{\AA}\times 32\text{\AA}$ water box. In the simulations the temperature was maintained using the Hoover extended system algorithm with a thermal piston mass of $1000\text{ kcal/mol}\cdot\text{ps}^2$.⁵⁶ A constant pressure of 1 atm was realized using the Langevin piston algorithm with a collision frequency of 20 ps^{-1} and mass of 1630 amu.⁵⁷ The covalent bonds involving hydrogen atoms were constrained with the SHAKE algorithm and a time step of 2 fs was used to integrate the equation of motion.⁵⁸ The nonbonded Lennard-Jones interactions were computed within a cutoff of 12 \AA , with a smoothing switch function over the range from 10 to 12 \AA . The electrostatic interactions were treated by the particle mesh Ewald method with a real space cutoff of 12 \AA , a charge grid of 1 \AA , and the 6-th order spline function for mesh interpolation.⁵⁹

Conformational sampling in the MD simulations was enhanced by applying the recently developed Hamiltonian replica exchange with concurrent solute scaling and biasing potential (HREST-BP) method.^{35,36} A total of 6 replicas were carried out for each system and exchanges attempted every 1000 MD steps according to the Metropolis criterion. In HREST-BP simulations, the scaling temperatures were assigned to 303 K, 324 K, 351 K, 382 K, 414 K and 450 K, with the ground-state replica temperature of 303 K selected to correspond to the experimental studies. The Hamiltonian biasing potential was constructed using the 2-dimensional grid-based correction map (bpCMAP) along the torsional dihedrals $\text{O}_5\text{-C}_1\text{-O}_n\text{-C}_n/\text{C}_1\text{-O}_n\text{-C}_n\text{-C}_{n+1}$ for each glycosidic linkage in the trisaccharides,³⁶ where O_n , C_n and C_{n+1} are atoms at the reducing-end monosaccharide of the linkage. The distribution of scaling factors for the bpCMAPs across the perturbed replicas was determined as previously described and the acceptance ratio between different neighboring replicas was examined to guarantee that sufficient exchanges were being obtained.³⁵ Each replica was simulated for 40 ns for the

production runs. All the production HREST-BP simulations were carried out in CHARMM using the replica exchange module REPDST with BLOCK to scale the solute-solute and solute-solvent interactions,^{52, 60} and with CMAP to apply the 2D biasing potentials along each one of the glycosidic linkages,^{61, 62} respectively. For trisaccharide **1**, a second 100-ns HREST-BP simulation was carried out to examine the convergence of sampling about the linkage motions, which shows adequate conformational sampling obtained from a simulation time of 40 ns by comparing the free energy profiles with 40 and 100 ns trajectories (see Figure S1 in supporting information).

Coordinates from the 40 ns trajectory from the ground-state replicas were saved every 1 ps for various data analyses. The reparametrized Karplus equation JCX/SU09,³⁹ which takes the uncertainty and flexibility of the torsion angles, the in-plane effect, and the inner oxygen substituents of the model compound into account, was employed to compute NMR heteronuclear proton-carbon and homonuclear carbon-carbon NMR coupling constants, as shown in eq. (1-4),

$${}^3J_{CH}(\phi) = 6.54 \cos^2(\phi - \Delta) - 0.62 \cos(\phi - \Delta) - 0.17 \quad (1)$$

$${}^3J_{CH}(\psi) = 6.54 \cos^2(\psi) - 0.62 \cos(\psi) + 0.33 + 0.6 \exp(\kappa \cos(\phi_{O5} - 180)) / \exp(\kappa) \quad (2)$$

$${}^3J_{CC}(\phi_{C2}) = 3.72 \cos^2(\phi_{C2} + \Delta) - 0.08 + CIP \quad (3)$$

$${}^3J_{CC}(\psi_{C1}) = 4.28 \cos^2(\psi_{C1}) - 0.11 + 0.6 \exp(\kappa \cos(\phi_{O5} - 180)) / \exp(\kappa) + CIP \quad (4)$$

where the dihedrals are defined as $\phi = \text{H}_1\text{-C}_1\text{-O}_n\text{-C}_n$, $\psi = \text{C}_1\text{-O}_n\text{-C}_n\text{-H}_n$, $\phi_{O5} = \text{O}_5\text{-C}_1\text{-O}_n\text{-C}_n$, $\phi_{C2} = \text{C}_2\text{-C}_1\text{-O}_n\text{-C}_n$ and $\psi_{C1} = \text{C}_1\text{-O}_n\text{-C}_n\text{-C}_{n-1}$ or $\text{C}_1\text{-O}_n\text{-C}_n\text{-C}_{n+1}$, with O_n , C_n , H_n , C_{n+1} and C_{n-1} being the atoms in the reducing end monosaccharide of a given glycosidic linkage. Δ is a phase shift factor

depending on the stereochemistry of the linkage between the sugar residues, which has a value of -12° for α -D-hexopyranoses and $+12^\circ$ for β -D-hexopyranoses. This phase shift is adopted to account for the impact of the O5 atom in the sugar ring along the torsional angle ϕ . κ has a value of 8 and this term accounts for the variable in-plane effect (VIP). The constant in-plane (CIP) term has a value of 0.6 and was employed for a ψ_{C1} torsion angle along the atom sequence C_1' - O_2 - C_2 - C_1 of trisaccharide **3** to account for the terminal in-plane oxygen substituent (O1 atom in α -D-mannose). To provide insight into the deviation between experimental and simulated coupling constants, these quantities were also computed for trisaccharide **3** using density functional theory (DFT) with the hybrid functional B3LYP and the 6-31G* basis set.^{63, 64} A total of 100 evenly distributed trisaccharide conformations were extracted from the ground-state replica for the gas phase DFT calculations. For each trisaccharide conformation, two disaccharide models, β -D-Glcp-(1 \rightarrow 2)- α -D-Manp-OMe and β -D-Glcp-(1 \rightarrow 3)- α -D-Manp-OMe, were constructed by capping the previously substituted oxygen atom with a hydrogen atom to examine the effect of the system size on the coupling constants obtained from the DFT calculation.

From simulations, the effective $^1\text{H}, ^1\text{H}$ distances in trisaccharides **1** – **5** were calculated according to eq. (5).

$$1/r = \langle r^{-6} \rangle^{1/6} \quad (5)$$

The free energy or potential of mean force (PMF) along one or two linkage dihedrals was computed from the unperturbed ground-state replica under the NPT ensemble as,

$$\begin{aligned}
 G(\omega_i) &= \frac{-1}{\beta_0} \ln \left\{ \int \rho(\mathbf{R}) \delta(\Omega(\mathbf{R}) - \omega_i) d\mathbf{R} \right\} \\
 &= \frac{-1}{\beta_0} \ln \left\{ \sum_{j=1}^{N_s} \Delta(\Omega(\mathbf{R}_j) - \omega_i) / N_s \right\}
 \end{aligned} \tag{6}$$

where N_s is the number of snapshots recorded in the ground-state replica and $\Delta(\Omega(\mathbf{R}_j) - \omega_i) = 1$ if $\Omega(\mathbf{R}_j)$ is within the bin $[w_i - \Delta w / 2, w_i + \Delta w / 2]$ and otherwise $\Delta(\Omega(\mathbf{R}_j) - \omega_i) = 0$.

Results and Discussions

Experimental and computational studies were performed for the five trisaccharides shown in Figure 1. The selected trisaccharides include the monosaccharides glucose and mannose, which have different anomeric configurations, with the monosaccharides connected by (1→2)-, (1→3)- and/or (1→4)-glycosidic linkages. Trisaccharides **1**, **2**, **4** and **5** are all composed of glucose monosaccharides while there is one mannose residue in trisaccharide **3**. These represent a range of saccharide structural variability and connectivity some of which occur in larger biologically important oligo- and polysaccharides.^{65, 66}

To delineate the conformational heterogeneity of these trisaccharides, the J coupling parameters and $^1\text{H}, ^1\text{H}$ -effective distances, which are all conformationally sensitive, were measured with NMR spectroscopy.¹⁹ To obtain an atomic-detail resolution picture of the conformational properties and compare with experimental measurements, MD simulations were carried out for each trisaccharide in aqueous solution using the HREST-BP enhanced sampling method.³⁵ Previous studies have shown that simulations with HREST-BP can enhance the

sampling of different conformational states along both the glycosidic linkages and the noncontiguous monosaccharide-monosaccharide distances and thus provide sufficient conformational sampling within a simulation time of 40 ns for the trisaccharide systems (see Figure S1 in supporting information).^{35, 36} Simulations herein used the CHARMM36 additive force field for hexopyranoses^{28, 30}, which has been shown to yield good agreement between the computed and experimentally measured J coupling constants and effective $^1\text{H}, ^1\text{H}$ distances for various disaccharides.^{9, 14}

NMR spectroscopy

Conformational aspects of trisaccharides **1** – **5** were investigated in D_2O solution at 303 K where they have a rotational correlation time $\tau_c \approx 235$ ps, as determined from translational diffusion NMR experiments being $D_t = 3.19 \times 10^{-10}$ (SD 0.06×10^{-10}) $\text{m}^2 \cdot \text{s}^{-1}$ in D_2O at 298 K. The NMR observables $^1\text{H}, ^1\text{H}$ cross-relaxation rates and homo- as well as heteronuclear spin-spin coupling constants $^nJ_{\text{CC}}$ and $^3J_{\text{CH}}$, respectively, were determined; these were used to derive experimental proton-proton distances and analyzed employing Karplus-type relationships for the latter. To this end 1D $^1\text{H}, ^1\text{H}$ -NOESY and 1D $^1\text{H}, ^1\text{H}$ -T-ROESY experiments (Figure 2)^{24, 45} were performed at high magnetic field strengths corresponding to a ^1H resonance frequency of up to 900 MHz in order to obtain better resolved spectra. In some cases severe spectral overlap limited the analysis and a 1D STEP-NOESY experiment⁴⁶ was carried out for compound **5** (Figure 3), which facilitated the cross-relaxation rate to be obtained for the H4-H1" interresidue interaction in an efficient way via a PANIC-based analysis of the NOE buildup curve.^{67, 68} The $^1\text{H}, ^1\text{H}$ cross-relaxation rates for the trisaccharides were also obtained by extrapolation to zero mixing time (Figure 4a) as devised by Dixon et al.⁶⁹ and data for compounds **1** – **5** are compiled in Table 1. The corresponding proton-proton distances, using r^{-6} -averaged effective reference distances

from the MD simulations (vide infra), in conjugation with eqn. 5 lead to experimentally determined $^1\text{H}, ^1\text{H}$ distances in the trisaccharides (Table 2).

Spin-spin coupling constants across the glycosidic linkage are complementary to the interresidue proton-proton distances obtained from NOE and T-ROE experiments and are analyzed and interpreted by Karplus-type relationships. The heteronuclear $^3J_{\text{CH}}$ coupling constants, compiled in Table 3, were determined by J-HMBC (Figure 4b) and 1DLR experiments.^{44, 70, 71} Homonuclear $^3J_{\text{CC}}$ as well as $^2J_{\text{CC}}$ coupling constants will supply additional information on conformational preferences at glycosidic linkages. They are attainable by e.g. ^1H -detected IPAP DEPT-INADEQUATE experiments³⁷, albeit at long acquisition times with high concentrations of compounds. Alternatively, isotopologues, ^{13}C -labeled at the anomeric carbon and at the glycosyloxyated carbon atom,¹⁴ i.e., the carbon at the linkage position of a glycosidic linkage, efficiently results in six transglycosidic J couplings, viz., $^3J_{\text{H1}',\text{Cn}}$, $^3J_{\text{C1}',\text{Hn}}$, $^3J_{\text{C2}',\text{Cn}}$, $^3J_{\text{C1}',\text{C}(n-1)}$, $^3J_{\text{C1}',\text{C}(n+1)}$, and $^2J_{\text{C1}',\text{Cn}}$, where n is the substitution position, although this requires synthesis of the site-specifically labeled oligosaccharide.⁷² An alternative approach to obtaining most of these homonuclear coupling constants is to synthesize isotopologues that are only ^{13}C -labeled in the non-reducing residue at the glycosidic linkage of an oligosaccharide, e.g., in a rhamnose-containing disaccharide at C1' thereby giving information related to the ψ torsion angle⁷³ as well as at C2' for which the $^3J_{\text{CC}}$ coupling constant reports on the ϕ torsion angle preferences.⁷⁴

Herein we have used this methodology by synthesizing site-specifically ^{13}C -labeled isotopologues and isotopomers of compound **3**. The ^1H NMR spectral region 4 – 5 ppm is indicative of differences between the three different ^{13}C -labeling patterns (Figure 5). In the doubly labeled compound **3-c2'/c2''** it is evident that for the terminal β -D-glucopyranosyl residues $^2J_{\text{C2},\text{H1}} \approx 0$ Hz since the resonances from H1' and H1'' are doublets ($^3J_{\text{H1},\text{H2}} \approx 7.7$ Hz)

devoid of any two-bond heteronuclear couplings, consistent with the fact that the ${}^2J_{C_2,H_1}$ coupling constant in β -D-glucose is small.⁷⁵ In contrast, the resonances of the anomeric protons in **3-c1'** and **3-c1''** are split by ${}^1J_{C_1,H_1} = 161$ Hz as a consequence of the site-specific ${}^{13}\text{C}$ -labeling (Figure 5). Furthermore, the presence of ${}^3J_{CH}$ across the glycosidic linkages are readily observed since the multiplicity of the H2 and H3 resonances is a *ddd* (Figure 5) and the magnitudes of these J couplings (Table 3) are obtained using the J doubling procedure.⁵⁰ The homonuclear ${}^3J_{CC}$ couplings related to the ϕ torsion angles were obtained from 1D ${}^{13}\text{C}$ or 1D INADEQUATE NMR spectra^{48,49} (Figure 6) of **3-c2'/c2''** showing the splitting of the resonances from the C2 and C3 atoms of the mannosyl residue. In a similar way the ${}^3J_{CC}$ related to the ψ_2 and ψ_3 torsion angles were determined from the NMR spectra of the isotopomers **3-c1'** and **3-c1''**, respectively (Figure 6). The ${}^2J_{CC}$ coupling constant, which is negative, at the glycosidic linkage carries information about rotamers⁷⁶ and torsion angle preferences.⁷⁷ From the NMR spectra of the isotopomers **3-c1'** and **3-c1''** the ${}^3J_{C_1',C_2}$ and ${}^3J_{C_1'',C_3}$ were readily obtained, respectively (Figure 6, Table 3). It may be noted that since the linewidths of the ${}^{13}\text{C}$ resonances (full width at half maximum) correspond to $\nu_{\text{FWHM}} \approx 1.1$ Hz the determined values in the 1D INADEQUATE spectra are not limited by cancellation effects⁷⁸ when ${}^nJ_{CC} > 2$ Hz; the absence of some signals in the spectra are also consistent with ${}^3J_{CC} < 1$ Hz (Table 3).

Experimentally measured and simulation computed J coupling constants and effective ${}^1\text{H}, {}^1\text{H}$ distances

The experimental J coupling constants and effective ${}^1\text{H}, {}^1\text{H}$ distances were measured along the rotatable glycosidic linkages of the five trisaccharides. The experimental results may be used to determine the conformations being sampled by the trisaccharides, in part via the use of the Karplus equation to interpret the J coupling constants. In addition, a detailed atomic picture of

the conformational ensembles being sampled by the trisaccharides may then be extracted from the MD simulations, and the ensembles of simulated conformations can be used to calculate the J couplings with the reparametrized Karplus relation JCX/SU09 (eqs.1-4),³⁹ thereby allowing for verification of the computational approach. The JCX/SU09 equation makes several important corrections to better reproduce the experimental measurements for carbohydrate molecules and has been successfully used on different disaccharides.^{9, 14, 39}

The experimental and computed values of $^3J_{CH}$ couplings are shown in Table 3 and plotted in Figure 7. Qualitative agreement was observed for all five trisaccharides with the largest deviation being 1.1 Hz for the ϕ_4 dihedral in trisaccharide **5** (4.3 vs 3.2 Hz) and the smallest deviation being zero for ψ_2 in trisaccharide **1** (3.8 vs 3.8 Hz). The computed J couplings have a root mean square deviation (RMSD) of 0.65 Hz with respect to the corresponding experimental values along the torsional angle ϕ and 0.54 Hz along the ψ torsion. A detailed examination shows that all the computed J couplings along the linkage dihedral ϕ were overestimated if the α -anomer was the non-reducing end monosaccharide (ϕ_2/ϕ_3 of trisaccharide **1**, ϕ_2 of trisaccharide **2**, ϕ_3 of trisaccharide **4**); while the calculated values with β -anomeric configurations included are underestimated (ϕ_3 of trisaccharide **2**, ϕ_2/ϕ_3 of trisaccharide **3**, ϕ_4 of trisaccharide **4**, and ϕ_3/ϕ_4 of trisaccharide **5**). As shown in Figure 8, a left-shift of the ϕ distribution can simultaneously reduce the deviation for both α - and β -linked sugars. This correction can be added through an additional term of the phase shift Θ in the following equation derive from equ. (1),

$$^3J_{CH}(\phi) = 6.54 \cos^2(\phi - \Delta - \Theta) - 0.62 \cos(\phi - \Delta - \Theta) - 0.17 \quad (7)$$

with $\Theta=6^\circ$, which represents a balance of the overestimated and underestimated J couplings. With this correction the RMSD is reduced from 0.65 to 0.35 Hz along the torsional angle ϕ and the signed difference, $\sum(J_{\text{exp}} - J_{\text{calc}}) / N$, is reduced from 0.15 to 0.05 Hz, with N being the number of J couplings along the torsional angle ϕ . With this correction, the largest deviation of J couplings along ϕ was 0.7 Hz for ϕ_4 dihedral in trisaccharide **5** (4.3 vs 3.6 Hz) and the smallest deviation for ϕ_3 occurred in trisaccharide **3** with a value of zero (3.7 vs 3.7 Hz) (Table 3).

Accurate estimation of the coupling constants requires sufficient conformational sampling of the trisaccharide, faithful description of the energy landscape of the system by the force field, and accurate estimates of the coupling constants by the Karplus equation. According to previous studies and the convergence check in this work the duration of the HREST-BP simulation is adequate to obtain sufficient conformational samplings and,^{35,36} thus, this point will not contribute significantly to the discrepancy between experiment and simulation. This leaves the remaining two issues; however, they are coupled and are hard to separate completely. To shed some light on the possible causes of the discrepancy, QM calculations of $^3J_{\text{CH}}$ coupling constants were performed at DFT/B3LYP/6-31G* level for 100 conformations of trisaccharide **3** and for the associated disaccharides in the same conformations. The resulting $^3J_{\text{CH}}$ constants are very close to each other for the trisaccharide and corresponding disaccharides along both ϕ torsional angles in the linkages, with a RMSD of 0.22 Hz and 0.20 Hz for $\phi=\text{H1}'\text{-C1}'\text{-O2-C2}$ and $\phi=\text{H1}''\text{-C1}''\text{-O3-C3}$ (Figure 9a and b), respectively. This suggests that the DFT result is not sensitive to the system size variation in $^3J_{\text{CH}}$ coupling constant calculations. The coupling constants derived from Karplus equations (1) and (7) are compared with those from the DFT calculation (Figure 9c and d). The Pearson's correlation coefficients were computed for the $^3J_{\text{CH}}$

values from the Karplus equation and from DFT analysis, yielding values of 0.86 and 0.86 for eq. (1) and (7) along $\phi=H1'-C1'-O2-C2$, respectively, and 0.83 and 0.82 for eq. (1) and (7) along $\phi=H1''-C1''-O3-C3$, respectively. However, the RMSD with respect to the DFT result is about 0.3 Hz larger for the coupling constants computed with eq. (7) than those from eq. (1) along both ϕ dihedrals. Noting that the phase shift of the Karplus curve for the ϕ torsion angle is inherently dictated by an electronegative substituent along the coupling pathway,^{79, 80} and the above mentioned inability to separate contributions from force field sampling and Karplus equation to the differences, the development of more accurate force fields, e.g. the Drude polarizable force field for carbohydrates,^{81, 82} appears to be required to provide an improved understanding of the origin of these differences.

For J couplings along the torsional angle ψ , the signed difference is -0.37 Hz, suggesting this J coupling is overestimated from simulation except for ψ_2 in trisaccharide **3** (5.1 vs 4.7 Hz) (Figure 7 and Table 3). In addition to the torsional angle ψ , this J coupling value also depends on the dihedral ϕ_{O5} to account for the variable in-plane (VIP) effect as expressed in eq. (2). However, for the trisaccharides we studied here, the contribution from the VIP term is negligible since the dihedral distribution of ϕ_{O5} concentrates around 74° and -72° for glycosidic linkages with the α - and β -anomeric configurations at the non-reducing end monosaccharide, respectively. The RMSD between experimental and computed J couplings is 0.54 Hz. The smallest deviation of zero was observed for ψ_2 in trisaccharide **1** (3.8 vs 3.8 Hz) and ψ_3 in trisaccharide **3** (4.3 vs 4.3 Hz) and the largest deviation of 1.0 Hz for ψ_3 in trisaccharide **2** (4.7 vs 5.7 Hz).

In trisaccharide **3**, some additional ${}^3J_{CC}$ coupling constants were measured related to ϕ_{C2} , $\psi_{C1,Cn+1}$, and $\psi_{C1,Cn-1}$ (Table 3). The ${}^3J_{CC} \approx 3.0$ Hz related to the ϕ torsion angles in **3** are consistent with

anti-periplanar orientations at the torsion angles $C2'-C1'-O2-C2$ and $C2''-C1''-O3-C3$ and the prevalence of the exo-anomeric conformation. This conclusion is further supported by the ${}^2J_{CC} \approx -2$ Hz at the glycosidic linkages.⁷⁶ In addition, the latter ${}^2J_{CC}$ values support ψ torsional angles close to zero degrees, i.e., a syn-conformation as the major one at the glycosidic linkages.⁷⁷ The simulation overestimated the experimental J coupling by ~ 0.5 Hz for the torsional angles ϕ_{C2} and $\psi_{C1,Cn+1}$. However, the data set is too small to apply a suitable correction to eq. (3) and (4) for the J coupling calculation. For the J couplings related to $\psi_{C1,Cn-1}$ the simulations predicted ${}^3J_{CC} \leq 1$ Hz, in very good agreement with experimental estimates.

The overall agreement for ${}^1H, {}^1H$ -effective distances is indeed good between the experimental and simulated results (Table 2). The largest deviations 0.11~0.14 Å, 0.17 Å, 0.27 Å, 0.29 Å and 0.30 Å were observed for $H1'-H1''$ in trisaccharide **1**, $H1''-H5''$ in trisaccharide **2**, $H1''-H3$ in trisaccharide **3**, $H1'-H2''$ in trisaccharide **4**, and $H1''-H5$ in trisaccharide **5**.

Conformational preferences of the monosaccharide rings and exocyclic hydroxymethyl group

The conformational preferences of a trisaccharide can be represented through the states of the exocyclic hydroxymethyl groups, the ring puckers, and the relative orientations of the monosaccharides along the glycosidic linkages. From the simulations, the conformational propensity of the ring puckers and exocyclic hydroxymethyl rotations were examined in each monosaccharide. The pucker analysis, represented with Cremer-Pople parameters (R , θ , ϕ), shows a stable 4C_1 chair state near $\theta=0^\circ$ for all the monosaccharides, including α/β -D-glucopyranose and α -D-manopyranose within the 40 ns HREST-BP simulation (see Figure S2 in the supporting information).⁸³ This observation is in agreement with previous experimental and

computational studies which suggest a preferred 4C_1 chair conformation for the *gluco*- and *manno*-configured hexopyranoses around $\theta=0^\circ$.^{14, 84} The exocyclic hydroxymethyl group samples three different conformations as defined by the O5-C5-C6-O6 torsion angle, with comparable populations at the *gt* ($0^\circ\sim 120^\circ$) and *gg* ($-120^\circ\sim 0^\circ$) states and a relatively small population at the *tg* ($-180^\circ\sim -120^\circ$) & ($120^\circ\sim 180^\circ$) state (see Figure S3 in supporting information). This result suggests a preferred conformational conversion between the *gt* and *gg* states over the *tg* state, which is in agreement with previous observations from both experiments and simulations.^{14, 85} Taken together, similar conformational sampling was observed in the ring puckers and the exocyclic hydroxymethyl groups for all the included monosaccharides. Accordingly, in the following discussion, we will mainly focus on the conformational preferences along the glycosidic linkages, which control the flexibility and structural packing patterns in the oligo- or polysaccharide molecules, as well as the overall conformations of the trisaccharides as defined by the Cartesian coordinates.

Free energy landscape along the glycosidic linkages

The conformational preference between the connected monosaccharides is represented with two torsion angles, $\phi(H_1-C_1-O_n-C_n)$ and $\psi(C_1-O_n-C_n-H_n)$, defined for the (1 \rightarrow 2)-, (1 \rightarrow 3)- and (1 \rightarrow 4)-glycosidic linkages. In the simulations, the ϕ dihedral adopts a global minimum on the free energy landscapes from -54° to -30° for an α -anomeric form and 48° to 54° for a β -anomeric form as the non-reducing end monosaccharide, respectively (Figure 10 and Table 4). Here the non-reducing end monosaccharide refers to the sugar unit that includes atoms H_1 and C_1 in the definition of $\phi(H_1-C_1-O_n-C_n)$. For ϕ dihedrals with a sugar residue having an α -anomeric configuration at the non-reducing end monosaccharide, there is only one stable state sampled in the region (-60° , 0°). This is seen with the (1 \rightarrow 2)- and (1 \rightarrow 3)-linkages in trisaccharide **1**, the

(1→2)-linkage in trisaccharide **2**, and the (1→3)-linkage in trisaccharide **4**. On the other hand, for the sugar residues having the β -anomeric configuration there are additional sub-states observed around $\phi=+/-180^\circ$ or $\phi=-15^\circ$ in some glycosidic linkages besides the most stable conformation within $\phi\in(0^\circ, 60^\circ)$ (Figure 10). This is present in the (1→2)- and (1→3)-linkages in trisaccharide **3**, the (1→4)-linkage in trisaccharide **4**, and the (1→3)- and (1→4)-linkages in trisaccharide **5**. The observation of the sampled distribution along ϕ is in agreement with the prediction from the *exo*-anomeric effect and crystallographic structures.⁸⁴ The conformation along the ψ dihedral has multiple sub-states as shown in the free energy maps, suggesting additional flexibility along this linkage dihedral. For all five trisaccharides, the global minima along ψ is positioned around the syn-periplanar conformation at $\psi=0^\circ$ (Figure 10). Specifically, if the β -anomeric configuration is present at the non-reducing end unit, the global minima along ψ are positioned at the regions of $0^\circ\leq\psi\leq36^\circ$ and, if the α -anomeric form is present instead, the range $-36^\circ\leq\psi\leq0^\circ$ occurs. The exception occurs for the (1→3)-linkage in trisaccharide **4** where the global minimum is at $\psi=24^\circ$ (Table 4), but in this case the global energy minimum region is elongated covering both positive and negative values at the ψ torsion angle. This result for ψ was also observed in many crystal structures for *gluco*- and *manno*-configured hexopyranoses as the non-reducing end unit.^{86, 87}

Dihedral-based clustering analysis of the trisaccharide conformations

The structural flexibility of saccharides allows for a range of conformations to be sampled in solution, suggesting that the oligo- or polysaccharides may not typically be characterized in terms of a single 3D structure. This requires that these molecules be represented by an ensemble of conformations and to define this ensemble two approaches were undertaken. The first involved defining conformations based on the internal coordinates defined by the dihedrals at the

glycosidic linkages and the second involved the range of conformations in terms of Cartesian coordinates (see below). Defining the conformations based on glycosidic linkages used cluster analysis for each trisaccharide, with the analysis performed on the different local minima sampled on the free energy surface of each linkage. As shown in Figure 11, individual conformational states for each linkage are defined based on different ranges of the ϕ/ψ dihedrals associated with individual, local minima as determined from the above free energy landscapes. An index number is assigned to each region to be subsequently used as the basis for cluster analysis. Although this partitioning of ϕ/ψ space has the possibility of including more than one local minima in a given region or splitting one local minimum into two regions in some cases, the definitions used here are generally applicable to carbohydrate molecules and approximately corresponds to different free energy minima for the glycosidic linkages.

To apply this approach for each recorded snapshot from the simulation, the conformation of each glycosidic linkage is identified and assigned the corresponding index number. With trisaccharides this involves two index numbers associated with the two glycosidic linkages defining the overall conformation of each trisaccharide. For example, 1/0 represent the conformation with the first linkage at $\phi \in (-120^\circ, 0^\circ)/\psi \in (0^\circ, 120^\circ)$ and the second linkage at $\phi \in (-120^\circ, 0^\circ)/\psi \in (-120^\circ, 0^\circ)$. In this approach all conformations in a specific cluster are in the same local minima on the free energy landscape as defined by the glycosidic linkages. We refer to these as glycosidic linkage, or GL clusters. As shown below, conformations in the same GL cluster can vary in terms of Cartesian coordinates; however, as they occupy the same minima these different “Cartesian conformations” can readily interconvert without encountering any high free energy barriers. This is because all conformations in a given GL cluster are in the same local minima along every glycosidic linkage such that the interconversion between conformations can

occur without encountering significant energy barriers. GL clusters, therefore, provide a high dimensional representation of the carbohydrate conformation as compared to the 1D- or 2D-PMF profiles. Furthermore, the hydrogen bonding interactions, J coupling constants, and proton-proton effective distances can be analyzed for the conformations present in each given GL cluster to provide more structural insights into the conformational heterogeneity of saccharide molecules.

In trisaccharides **1**, **2** and **3**, both (1→2)- and (1→3)-glycosidic linkages are included but with different monosaccharides or anomeric configurations. According to the GL clustering, the first two clusters in trisaccharide **1** accounts for 89% of the total population (Table 5). The largest cluster corresponds to the global minimum of the two linkages in the free energy landscape, that is, $\phi_3 \in (-120^\circ, 0^\circ) / \psi_3 \in (-120^\circ, 0^\circ)$ & $\phi_2 \in (-120^\circ, 0^\circ) / \psi_2 \in (-120^\circ, 0^\circ)$. The second cluster is located at one local minima about the first linkage, $\phi_3 \in (-120^\circ, 0^\circ) / \psi_3 \in (0^\circ, 120^\circ)$, and the global minimum of the second linkage $\phi_2 \in (-120^\circ, 0^\circ) / \psi_2 \in (-120^\circ, 0^\circ)$.

To better understand the structural factors that govern the conformational preference, possible inter-monosaccharide hydrogen bonding interactions were monitored in the simulations. The result shows one stable interacting pair in GL cluster 1 (HO4-O2''), while in GL cluster 2 two interacting pairs are significantly sampled involving the HO2-O5' and OH2-O6' pairs. Beyond the largest two clusters, the remaining clusters comprise around 10% of the sampled conformations, of which no stable hydrogen bonding interactions were found (Figure 12 and 13), indicating the contribution of inter-monosaccharide hydrogen bonding interactions in stabilizing the most populated conformers. We also examined the water-mediated hydrogen bonding interactions in the simulation. Table 6 shows a very small occupancy ratio (~ 0.07) of this interaction over the whole trajectory, which is dominated by the contribution from GL cluster 1.

For the J coupling constants and effective $^1\text{H}, ^1\text{H}$ distances, the agreement is very good between experimental and simulated results. The largest deviation was 0.4 Hz for J coupling constants along torsional angle ϕ_3 (3.4 vs 3.8 Hz) if the corrected equation (7) was used (Table 3) and 0.11 for the effective distance between H1' and H1'' (2.37~2.40 vs 2.26 Å) (Table 2). Interestingly, the simulated values of different effective proton-proton distances for the first five GL clusters show large variations with respect to the experimental results as shown by the RMSD value (Table 5), while the weighted average with the respective cluster populations results in very good agreement to the experimental measurements (Table 2 and 3). This observation indicates that the simulation can faithfully reproduce the distribution of thermodynamically accessible conformations of this trisaccharide molecule, yielding the overall good agreement with the NMR data.

Trisaccharide **2** differs from trisaccharide **1** in the anomeric configuration of the central monosaccharide, with β -D-glucopyranose replacing the α -D-glucopyranose in trisaccharide **1** (Figure 1). There are again two largely populated clusters observed for trisaccharide **2**, which account for 82% of the total population (see Table S1 in Supporting Information). The largest cluster, occupying 60% of the overall conformations, corresponds to the global minima in the free energy surfaces of the two glycosidic linkages, $\phi_3 \in (0^\circ, 120^\circ)/\psi_3 \in (0^\circ, 120^\circ)$ & $\phi_2 \in (-120^\circ, 0^\circ)/\psi_2 \in (-120^\circ, 0^\circ)$. The second GL cluster positions within $\phi_3 \in (0^\circ, 120^\circ)/\psi_3 \in (-120^\circ, 0^\circ)$ & $\phi_2 \in (-120^\circ, 0^\circ)/\psi_2 \in (-120^\circ, 0^\circ)$. One stable hydrogen bond interaction was observed in GL clusters 1 and 2 between HO2 and O2'' (Figure 13 and Figure S4 in Supporting Information). In GL cluster 2 there is another stable hydrogen bond interaction HO4-O5'. GL clusters 3 and 4 account for populations of 9.1% and 7.0%, respectively. Interestingly, the stable HO4-O5' interaction pair exists in the conformations of cluster 3, while no stable interaction was observed in cluster 4.

For this molecule, the water-mediated hydrogen bonding interaction has an occupancy ratio of 0.14, with these interactions more frequently observed in GL clusters 1 and 4 (Table 6). The two largest J coupling constant deviations were observed along torsional angles ψ_3 (4.7 vs 5.7 Hz) and ϕ_2 (3.1 vs 3.5 Hz) and about the effective $^1\text{H}, ^1\text{H}$ distances for the intra-saccharide H1''-H5'' (3.82 vs 3.65 Hz) and the inter-saccharide H1''-H2 (3.22 vs 3.34 Hz), both of which are long distances (relative to the intraresidual reference distance) differing by ~ 0.15 Å between experiment and simulation (Table 3 and 2). The decomposition of simulated results also shows a large variation in different GL clusters, suggesting the influence of different conformational states to the measured J coupling constants and effective distances (see Table S1 in Supporting Information). Taken together, the simulation can well reproduce the experimental measurements for this trisaccharide and the contributions for various conformational states are further decomposed into different GL clusters.

Unlike a linear connection through the (1 \rightarrow 2)- and (1 \rightarrow 3)-glycosidic linkages in trisaccharides **1** and **2**, trisaccharide **3** is a model of a branched molecule with only one reducing end monosaccharide mannose (Figure 1). For **3**, the first 2 clusters account for 91% of the total population. They correspond to the most stable states in the linkage dihedral space, $\phi_2 \in (0^\circ, 120^\circ) / \psi_2 \in (0^\circ, 120^\circ)$ & $\phi_3 \in (0^\circ, 120^\circ) / \psi_3 \in (0^\circ, 120^\circ)$ for the largest cluster and $\phi_2 \in (0^\circ, 120^\circ) / \psi_2 \in (0^\circ, 120^\circ)$ & $\phi_3 \in (0^\circ, 120^\circ) / \psi_3 \in (-120^\circ, 0^\circ)$ for the second cluster (see Table S2 in Supporting Information). One highly populated inter-monosaccharide hydrogen bond, HO6'-O2'', between the two terminal adjacent glucosyl residues is formed in cluster 1, stabilizing this conformation. In addition, a HO4-O5'' hydrogen bond was found in clusters 2 and 4 of this trisaccharide (Figure 13 and Figure S5 in Supporting Information). The longer range HO6'-O2'' hydrogen bond appears to stabilize the conformation of GL cluster 1 to a greater extent than the

HO4-O5'' hydrogen bonds that occur across the glycosidic linkage in adjacent monosaccharides even though the latter occurs with a higher probability. Water-mediated hydrogen bonding interactions have an occupancy ratio of 0.11 with the largest contribution from GL cluster 1 (Table 6). The agreement for J coupling constants along ϕ and ψ is very good, with the largest deviation observed for torsion angle ψ_2 (5.1 vs 4.7 Hz) and the other three dihedrals less than 0.1 Hz (Table 3). This good agreement was also observed for the effective $^1\text{H}, ^1\text{H}$ distances with the largest discrepancy of 0.19 Å between H1' and H2 (2.23 vs 2.42 Å) (Table 2). However, the simulation overestimated the $^3J_{\text{cc}}$ by approximately 0.5 Hz for torsion angles $\phi_{\text{C}2}$ and $\psi_{\text{C}1-\text{C}n+1}$. Importantly, though, the values differ at the two glycosidic linkages indicating that torsional preferences and/or dynamics are not the same at these two linkages. Cluster analysis (see Table S2 in Supporting Information) shows that the corresponding J coupling constants in GL cluster 1 are all overestimated with respect to the experimental values along $\phi_{\text{C}2}$ and $\psi_{\text{C}1,\text{C}n+1}$, e.g. $J_{\text{C}2',\text{C}2}$, $J_{\text{C}2'',\text{C}3}$, $J_{\text{C}1'-\text{C}3}$, and $J_{\text{C}1'',\text{C}4}$. Under the assumption that eqs. (3-4) used to compute the J coupling constants are accurate, this result suggests that conformations in the first GL cluster were over-sampled in the simulation. However, in the current study, we cannot identify if this discrepancy arises from deviations from the ideal parameterizations in eqs. (3-4) or the relative population of conformational sampling (see Table S2 in Supporting Information). Overall, the agreement between experimental and simulated observations is satisfactory for this trisaccharide.

Both trisaccharides **4** and **5** are representing branched oligosaccharide structures connected through (1→4)- and (1→3)-glycosidic linkages. The same (1→4)-linkage is present in the two molecules between the α -D-glucose and β -D-glucose at the reducing and non-reducing ends, respectively, (Figure 1). This type of linkage is present in cellobiose. However, the (1→3)-linkages differ with respect to the anomeric configurations in the non-reducing end

monosaccharides, with α -D-glucose in trisaccharide **4** and β -D-glucose in trisaccharide **5**. The anomeric difference results in significantly different conformational heterogeneity of the two molecules. For trisaccharide **4**, the two largest clusters comprise 85% of the total population (see Table S3 in Supporting Information) while those in trisaccharide **5** only accounts for 50% of the population (see Table S4 in Supporting Information). For the two trisaccharides, the largest cluster involves the free energy global minima for the glycosidic linkages: $\phi_3 \in (-120^\circ, 0^\circ) / \psi_3 \in (0^\circ, 120^\circ)$ & $\phi_4 \in (0^\circ, 120^\circ) / \psi_4 \in (0^\circ, 120^\circ)$ for trisaccharide **4** and $\phi_3 \in (0^\circ, 120^\circ) / \psi_3 \in (0^\circ, 120^\circ)$ & $\phi_4 \in (0^\circ, 120^\circ) / \psi_4 \in (0^\circ, 120^\circ)$ for trisaccharide **5**. In trisaccharide **4**, one stable hydrogen bond between HO2 and O5' is formed in GL clusters 1, 3 and 4 with an additional interacting pair involving HO2' and O5'' between the terminal glucosyl residues in clusters 1 and 3 (Figure 13 and Figure S6 in Supporting Information). For this system, the water-mediated interactions are very weak and only have an occupancy ratio of 0.06. In trisaccharide **5** no stable hydrogen bond interactions were observed, which, together with the large number of clusters that sample relatively small amounts of conformation, indicates additional conformational flexibility due to the lack of stabilizing inter-monosaccharide hydrogen bonds. Alternatively, the water-mediated hydrogen bonding interactions most frequently observed in this molecule with an occupancy ratio of 0.16. Such hydrogen bonding interactions occur in GL clusters 1, 2, 4, and 5 (Table 6). The simulations overestimate the J coupling constants by 0.6 and 0.5 Hz for torsion angles ψ_3 (4.5 vs 5.1 Hz) and ψ_4 (5.4 vs 5.9 Hz) in trisaccharide **4** and 0.6 and 0.7 Hz along dihedrals ψ_3 (4.8 vs 5.4 Hz) and ψ_4 (5.3 vs 6.0 Hz) in trisaccharide **5** (Table 3). For the effective $^1\text{H}, ^1\text{H}$ distances, the largest two discrepancies were observed for H1'-H2'' (3.56 vs 3.27 Å) and H1'-H1'' (3.99 vs 4.10 Å) in trisaccharide **4** and for H1''-H5 (3.30 vs 3.60 Å) and H1'-H3 (2.34 vs 2.49 Å) as well as H1''-H4 (2.62 vs 2.45 Å) in trisaccharide **5** (Table 2). Table S3 in Supporting Information shows the first

3 GL clusters all overestimate the J coupling constants along ψ_3 and ψ_4 in trisaccharide **4**. The similar overestimation of ${}^3J_{C,H}$ was also observed from the simulation of **5** along torsional angles ψ_3 and ψ_4 (See Table S4 in Supporting Information). It is interesting to note that the third most populated cluster of trisaccharide **5**, with index 45 and a population of 19%, contains a significantly populated anti- ψ conformation (Figure 10). This indicates that the enhanced conformational heterogeneity as seen from the dispersed distribution of the GL clusters and the free energy landscape of the glycosidic linkages may indicate the presence of conformational epitopes in more complex oligosaccharide structures, such as lipopolysaccharides from *Moraxella catarrhalis* where an anti- ψ conformation is present at the corresponding β -(1 \rightarrow 4)-linkage. Accordingly, trisaccharide **5** represents a structural element of a larger oligosaccharide.⁸⁸⁻⁹¹

Taken together, specific hydrogen bonding patterns are found in different GL clusters of a given trisaccharide, suggesting specific interactions that stabilize respective conformational states. Notably, the conformational heterogeneity differs significantly with variations in the anomeric configuration of only one monosaccharide as observed from the comparison between trisaccharides **4** and **5**. Such an effect indicates that small changes in the composition of a polysaccharide can have a significant impact on the overall conformational properties.

3D spatial distribution of the trisaccharide conformations

GL clustering identifies conformers of a saccharide that are in the same local minima on the free energy landscapes of the glycosidic linkages. However, this clustering method does not present a direct 3D spatial distribution of the conformations. To show the spatial extension for individual GL clusters, we computed the Cartesian coordinate-based RMSD distributions and the spatial 3D probability distribution for the trisaccharides. For each GL cluster, the ‘central

conformation' was determined based on the conformer with the smallest deviation relative to the remaining conformations in the cluster. Then RMSD values for all conformations in each cluster were computed with respect to the central conformation. In addition, the RMSD values were calculated for all conformations for each trisaccharide relative to the central conformations of the top five GL clusters. The RMSD distributions shows that most conformations associated with each GL cluster are distributed around one major peak within a range of 1.5 Å in most cases (Figure 14, solid lines). This is consistent with the GL clusters being defined based on the local minima in the 2D glycosidic linkage free energy surfaces. However, GL cluster 3 of trisaccharides **3** and **5** has a broader distribution out to 2.2 Å. Concerning the RMSD values calculated for all the conformations in the trisaccharides with respect to the central conformation of individual GL clusters (Figure 14, dotted lines), the RMSD distributions are significantly larger than in the individual GL clusters, with RMSD values of 3 Å. The largest extent of conformational sampling is observed for trisaccharides **3**, **4** and **5**, representing branched structures, compared to the linear trisaccharides **1** and **2**. The combination of the GL cluster and RMSD analysis indicates that sampling of conformations beyond a single GL cluster leads to an expected increase in sampling of Cartesian coordinate space. However, even within a given GL cluster the extent of Cartesian coordinate sampling is significant and likely to occur on short time scales given the lack of significant barriers between conformations.

Besides RMSD, the spatial distribution can also be represented by the volume of the sampled conformations. To compute the sampled volume, a 3D map with a voxel size of 1Å×1Å×1Å was constructed around each saccharide and then each non-hydrogen atom of an aligned conformation was assigned to a grid. The sampled volume is the total number of voxels occupied by at least one atom. This analysis was performed for all conformations sampled by each

trisaccharide or for individual GL clusters (Figure 15). The most highly populated clusters typically sample the largest volumes, though with trisaccharides **2**, **4** and **5**, GL cluster 2 samples larger volumes. This indicates that specific hydrogen bond interactions that stabilize a GL cluster may lead to a decrease in conformational variability.

Analysis of the volumes sampled by the saccharides offers a convenient approach to visualize the extent of conformational sampling. Shown in Figure 16 are 3D spatial distributions sampled by trisaccharide **4** overlaid on a selected conformation of the trisaccharide (Figure 1). As is evident, a broad spatial range of conformations is being sampled by the trisaccharide. Notable is the sampling of similar, but slightly different spatial regions by GL cluster 1 vs. 2 and, as expected, a wider range of sampling occurs when all conformations are taken into account.

The range of the spatial distributions sampled in the different GL clusters being similar is expected because of the presence of only two glycosidic linkages. With additional glycosidic linkages that would be present in complex oligo- or polysaccharides, small deviations in the dihedral space sampled in different GL clusters can be anticipated to result in larger accumulated spatial differences. This spatial difference may correspond to different packing patterns, which are stabilized by favorable long-range hydrogen bond interactions. In such cases, the inter-monsaccharide nonbonded interactions in conjunction with the localized glycosidic linkage conformations will play an important role in dictating to the overall conformational sampling of complex saccharides.

Conclusions

For the five studied trisaccharides the simulated results reproduce well the experimental J coupling constants and effective $^1\text{H}, ^1\text{H}$ distances. Whereas the NOE-based experiments give a good description of the 3D-structure of an oligosaccharide, they are limited by the $\langle r^{-6} \rangle$

averaging making the detailed interpretation somewhat less precise with respect to subtle conformational differences, the J -based experiments are excellent in picking up small perturbations from the environment (solvent) *per se* or due to changes in structure such as with the five trisaccharides investigated herein. However, the combination of the two types of experiments facilitates a powerful way to elucidate the conformational space sampled by the molecules. Detailed analysis of the simulation results additionally provides an atomic-level interpretation of the conformational heterogeneity of the trisaccharides, from which the impact of monosaccharide compositions and linkage types can be identified. Notably, accounting for the full range of sampled conformations, as defined by clustering of the conformational states based on the glycosidic linkage dihedrals, is required to reproduce the experimental data. These results stress the usefulness of the MD simulations in obtaining a high-resolution description at the atomic level of detail of the conformational heterogeneity of the oligosaccharides.

The present study shows that the variation in anomeric configuration can result in significant difference in the conformational preferences of the trisaccharides. In addition, the intermonosaccharide hydrogen bonding interactions also play a critical role in defining the conformational sampling of the trisaccharides. The present observations will facilitate our understanding of how trisaccharides contribute to conformational heterogeneity in more complicated saccharides, as well as enable the determination of structure-function relationships, which will help to direct the rational design of oligo- and polysaccharides with specific functions, such as those that are used in the development of vaccines where the presentation of key structural epitopes is essential for immunogenic response.

Acknowledgements

This work was supported by grants from NIH (GM070855) to ADM Jr. and the Swedish Research Council (No. 621-2013-4859) and The Knut and Alice Wallenberg Foundation to GW. The Swedish NMR Centre at Göteborg University is thanked for access to a high field spectrometer and computational support from the University of Maryland Computer-Aided Drug Design Center is acknowledged. MJ acknowledges the helpful discussion with Dr. Jing Huang on the calculation of J coupling constants using the DFT method.

Tables

Table 1. ^1H , ^1H cross-relaxation rates $\times 10^2$ in s^{-1} for trisaccharides **1** – **5**.

Compound	1		2				3^a			4		5		
Proton pair	$\sigma_{\text{T-ROE}}$ 900 MHz	$\sigma_{\text{T-ROE}}$ 600 MHz	Proton pair	$\sigma_{\text{T-ROE}}$ 700 MHz	$ \sigma_{\text{NOE}} ^{\text{c,d}}$ 600 MHz	$\sigma_{\text{T-ROE}}$ 500 MHz	Proton pair	$\sigma_{\text{T-ROE}}$ 600 MHz	$ \sigma_{\text{NOE}} $ 600 MHz	Proton pair	$\sigma_{\text{T-ROE}}$ 700 MHz	Proton pair	$\sigma_{\text{T-ROE}}$ 900 MHz	$ \sigma_{\text{NOE}} ^{\text{d,e}}$ 600 MHz
H1'-H3	11.8	16.8	H1''-H1'		0.47		H1'-H1	11.5	3.4	H1'-H1''	0.457	H1'-H3	6.95	
H1'-H1''	10.2	13.1	H1''-H2'		6.00		H1'-H2	15.9	4.15	H1'-H3	14.3	H1''-H3	2.55	
H1''-H2'	6.75	8.16	H1''-H2		0.90		H1''-H2	11.8	3.35	H1'-H2''	0.901	H1''-H5	0.877	
H1''-H3	<0.820		H1''-H5''		0.33		H1''-H3	12.0	4.45	H1''-H4	11.9	H1'-H3'	4.28	
H1'-H2'	8.50 ^b	11.8 ^b	H1''-H2''		5.31 ^b		H3-H5	8.4 ^b	2.2 ^b	H1'-H2'	9.65 ^b	H1'-H5'	7.66	
												H1''-H3''	4.67	
												H1''-H5''	7.52 ^b	
			H1''-H2	1.68		1.87						H1''-H4		4.61 ^f
			H1''-H5''	0.988 ^b		1.14 ^b						H1-H2		7.55 ^b

^a Cross-relaxation rates from ref.²⁴ ^b Pertinent cross-relaxation rates used as reference for **1** – **5**.

^c Acquired at 37 °C.

^d Zero-quantum suppression filter used⁴⁷ and data analyzed using the PANIC approach.⁶⁸

^e Acquired at 5 °C.

^f Acquired using a STEP-NOESY experiment.⁴⁶

Table 2. Effective ^1H , ^1H distances in trisaccharides **1** – **5** calculated from MD simulations^a and experimentally determined.^b

Compound	1			2			3^a			4			5						
Proton pair	r_{HH}	$r_{\text{T-ROE}}$ 900 MHz	$r_{\text{T-ROE}}$ 600 MHz	Proton pair	r_{HH}	$r_{\text{T-ROE}}$ 700 MHz	r_{NOE} 600 MHz	$r_{\text{T-ROE}}$ 500 MHz	Proton pair	r_{HH}	$r_{\text{T-ROE}}$ 600 MHz	r_{NOE} 600 MHz	Proton pair	r_{HH}	$r_{\text{T-ROE}}$ 700 MHz	Proton pair	r_{HH}	$r_{\text{T-ROE}}$ 900 MHz	r_{NOE} ^c 600 MHz
H1'-H3	2.33	2.31	2.30	H1"-H1'	3.69		3.59		H1'-H1	2.42	2.35	2.31	H1'-H1"	4.10	3.99	H1'-H3	2.49	2.34	
H1'-H1"	2.26	2.37	2.40	H1"-H2'	2.33		2.35		H1'-H2	2.42	2.23	2.23	H1'-H3	2.22	2.25	H1"-H3	2.86	2.76	
H1"-H2'	2.56	2.54	2.59	H1"-H2	3.34		3.22		H1"-H2	2.37	2.34	2.31	H1'-H2"	3.27	3.56	H1"-H5	3.60	3.30	
H1"-H3	3.69	>3.60		H1"-H5"	3.65		3.82		H1"-H3	2.47	2.34	2.20	H1"-H4	2.39	2.32	H1'-H3'	2.51	2.54	
H1'-H2'	2.44 ^c	2.44 ^c	2.44 ^c	H1"-H2"	2.40 ^c		2.40 ^c		H3-H5	2.48 ^c	2.48 ^c	2.48 ^c	H1'-H2'	2.40 ^c	2.40 ^c	H1'-H5'	2.30	2.30	
																H1"-H3"	2.52	2.50	
																H1"-H5"	2.31 ^c	2.31 ^c	
				H1"-H2	3.34	3.34		3.36								H1"-H4	2.45		2.62
				H1"-H5"	3.65 ^c	3.65 ^c		3.65 ^c								H1-H2	2.41 ^c		2.41 ^c
R ^c		1.00	0.83			1.00	0.99	1.00			0.50	0.26			0.98			0.99	1.00
RMSD ^c		0.06	0.07			0.00	0.10	0.01			0.11	0.16			0.14			0.13	0.12

^a $1/r = \langle r^{-6} \rangle^{1/6}$ computed from the 40 ns trajectory of ground-state replica. ^b $r_{ij} = r_{\text{ref}}(\sigma_{\text{ref}}/\sigma_{ij})^{1/6}$. ^c Reference distance. ^c Pearson's correlation coefficient (R) and RMSD computed between experimental and simulated results.

Table 3. Transglycosidic ${}^3J_{\text{CH}}$ and ${}^3J_{\text{CC}}$ in Hz for trisaccharides **1** – **5**.

Compound	1 ^a		2		3 ^b		4		5		Compound		3 ^f					
Atom pair	${}^3J_{\text{expt}}$	${}^3J_{\text{calc}}^{\text{h}}$	${}^3J_{\text{expt}}$	${}^3J_{\text{calc}}$	${}^3J_{\text{expt}}$	${}^3J_{\text{calc}}$	${}^3J_{\text{expt}}$	${}^3J_{\text{calc}}$	${}^3J_{\text{expt}}$	${}^3J_{\text{calc}}$	Atom pair	${}^3J_{\text{expt}}^{\text{g}}$	${}^3J_{\text{calc}}$	Atom pair	${}^3J_{\text{expt}}^{\text{g}}$	${}^3J_{\text{calc}}$	Atom pair	${}^2J_{\text{expt}}$
H1'-Cn	3.4	4.3 (3.8)	3.8	3.5 (4.0)	4.1	3.5 (4.0)	4.2	4.4 (3.9)	3.8	3.0 (3.6)	C2'-C2	2.8	3.4	C2"-C3	2.9	3.4	C1'-C2	-1.8
C1'-Hn	4.7	4.9	4.7	5.7	5.1{5.2} ^d	4.7	4.5	5.1	4.8	5.4	C1'-C1	<1.0	1.0 ^c	C1"-C2	<1.0	0.6	C1"-C3	-2.0
H1"-Cn	3.0	3.3 (2.7)	3.1	4.1 (3.5)	3.7	3.1 (3.7)	3.6	3.2 (3.8)	4.3	3.2 (3.6)	C1'-C3	2.0	2.5	C1"-C4	2.1	2.6		
C1"-Hn	3.8	3.8	4.7	5.1	4.3{4.2} ^e	4.3	5.4	5.9	5.3	6.0								
R ¹		0.85(0.95)		0.78(0.96)		0.93(0.98)		0.97(0.94)		0.95(0.94)								
RMSD. ¹		0.5(0.3)		0.8(0.6)		0.5(0.2)		0.5(0.4)		0.8(0.6)								

^a ${}^3J_{\text{CH}}$ from ref. ²⁵ ^b ${}^3J_{\text{CH}}$ from ref. ⁹² ^c Calculated with a constant-in-plane (CIP) effect. ^{39d} Measured in **3-c1'**. ^e Measured in **3-c1''**. ^f ${}^{13}\text{C}_{\text{FWHM}} \approx 1.1$ Hz for trisaccharide **3** at 175 MHz. ^g ${}^nJ_{\text{CC}}$ are given as the average between in-phase and anti-phase measurements, deviating with ± 0.1 Hz from the average. ^h ${}^3J_{\text{calc}}$ is calculated from eq. (1) and values in parenthesis are computed from eq. (7) using averaging over four evenly distributed trajectory segments each of 10 ns. ¹ Pearson's correlation coefficient (R) and RMSD between experimental and simulated results. The values in parenthesis are computed using the ${}^3J_{\text{CH}}$ constants from eq. (7) for the dihedral ϕ .

Table 4. Location of global minimum in the free energy landscape about the glycosidic dihedrals ϕ and ψ ($^\circ$).

Trisaccharide	ϕ/ψ (linkage 1) ^a	ϕ/ψ (linkage 2) ^a
1	-36/-24	-54/-36
2	48/12	-42/-24
3	48/24	54/36
4	-30/24	48/12
5	54/24	54/0

- a. Linkage 1 is defined for the linkage including the monosaccharide with one prime at the non-reducing end and linkage 2 includes the monosaccharide with double primes at the non-reducing end. See Figure 1 for the structural models.

Table 5. Dihedral-based clustering for trisaccharide **1**^a.

Cluster index ^b	Population/%	³ J _{calc} (H1'-Cn)	³ J _{calc} (C1'-Hn)	³ J _{calc} (H1''-Cn)	³ J _{calc} (C1''-Hn)	RMSD ^c	R ^c	r _{H1'-H3}	r _{H1'-H1''}	r _{H1''-H2'}	r _{H1''-H3}	r _{H1'-H2'}	RMSD ^c	R ^c
00	67.7	4.0(3.5)	5.0	3.2(2.6)	3.8	0.4(0.3)	0.94(0.99)	2.38	2.23	2.61	4.28	2.43	0.31	0.99
10	21.3	5.1(4.7)	4.4	3.2(2.7)	3.6	0.9(0.7)	0.32(0.55)	2.18	2.26	2.55	3.16	2.45	0.21	0.97
20	3.2	4.6(4.1)	6.6	3.4(2.8)	4.4	1.2(1.1)	0.96(0.99)	3.62	2.29	2.45	4.85	2.44	0.81	0.81
01	2.4	4.2(3.7)	4.8	4.8(4.3)	3.9	1.0(0.7)	0.13(0.62)	2.38	3.50	2.24	5.85	2.49	1.13	0.91
40	2.1	4.3(4.7)	5.3	3.4(2.8)	4.2	0.6(0.8)	0.95(0.83)	2.17	2.27	2.55	2.62	2.46	0.45	0.72
Sum	96.7													

- a. The first 5 clusters listed in this table are out of a total of 22 clusters sampled for trisaccharide **1**; the ³J_{calc} coupling constant and effective ¹H, ¹H distance r_{HH} were computed for each cluster. The values in parenthesis were computed with eq. (7) and the other J coupling constants were computed with eq. (1-4).
- b. The linkage index was defined in Figure 1 and the conformation of the two linkages was represented by two corresponding numbers.
- c. The Pearson's correlation coefficient R and RMSD values were computed for each GL cluster against the experimental measurements. For J coupling constants, the RMSD and R values in parenthesis correspond to ³J_{calc} computed from eq. (7). For the ¹H, ¹H distances, the R and RMSD were computed against the experiments at 900 MHz (see Table 2).

Table 6. Occupancy of the water mediated hydrogen bonding interactions in the entire trajectory and the first five GL clusters.^a

GL cluster	Trisaccharide 1	Trisaccharide 2	Trisaccharide 3	Trisaccharide 4	Trisaccharide 5
	O2'-O2''	O4-HO6'	O4-HO6''	O4-O2''	O4-HO6'
1	0.09 (0.06)	0.17 (0.10)	0.12 (0.09)	0.05 (0.03)	0.23 (0.06)
2	0.05 (0.01)	0.08 (0.02)	0.06 (0.01)	0.07 (0.02)	0.24 (0.06)
3	0.03 (0.00)	0.06 (0.01)	0.18 (0.01)	0.06 (0.00)	0.00 (0.00)
4	0.01 (0.00)	0.15 (0.01)	0.03 (0.00)	0.11 (0.00)	0.32 (0.02)
5	0.00 (0.00)	0.00 (0.00)	0.16 (0.00)	0.07 (0.00)	0.17 (0.01)
Entire trajectory	(0.07)	(0.14)	(0.11)	(0.06)	(0.16)

- a. Occupancy (*occ*) was computed as $occ = \frac{\sum_{i=1}^N t_i}{t_{total}}$, with N , t_i and t_{total} the number of water mediated hydrogen bonding events for a given pair of atoms, the lifetime of the i -th event, and the total simulation time for a given conformation pool, respectively. The water-mediated hydrogen bonding event was defined active when the distance is less than 2.4 Å between water atom and the respective donor or acceptor of both atoms in the given pair. The occupancy was computed relative to the conformations in a given GL cluster only and all frames in the entire trajectory (values in parenthesis). The inter-saccharide atom pair with the largest occupancy value was listed in this table for each trisaccharide system.

References

1. *Essentials of Glycobiology*, Cold Spring Harbor Laboratory Press: Cold Spring Harbor, New York, 2nd edn., 2009.
2. D. M. Alonso, S. G. Wettstein and J. A. Dumesic, *Chem. Soc. Rev.*, 2012, **41**, 8075-8098.
3. A. M. Slaney, V. A. Wright, P. J. Meloncelli, K. D. Harris, L. J. West, T. L. Lowary and J. M. Buriak, *ACS Appl. Mater. Interfaces*, 2011, **3**, 1601-1612.
4. R. D. Astronomo and D. R. Burton, *Nat. Rev. Drug Discovery*, 2010, **9**, 308-324.
5. Y. Huang and C. Wun, *Expert Rev. Vaccines*, 2010, **9**, 1257-1274.
6. D. R. Burton, P. Poignard, R. L. Stanfield and I. A. Wilson, *Science*, 2012, **337**, 183-186.
7. R. Lang, G. Winter, L. Vogt, A. Zuercher, B. Dorigo and B. Schimmele, *Drug Dev. Ind. Pharm.*, 2009, **35**, 83-97.
8. R. K. Shukla and A. Tiwari, *Crit. Rev. Ther. Drug Carrier Syst.*, 2011, **28**, 255-292.
9. E. Hatcher, E. Sawen, G. Widmalm and A. D. MacKerell, Jr., *J. Phys. Chem. B*, 2011, **115**, 597-608.
10. S. S. Mallajosyula and A. D. MacKerell, Jr., *J. Phys. Chem. B*, 2011, **115**, 11215-11229.
11. S. Re, N. Miyashita, Y. Yamaguchi and Y. Sugita, *Biophys. J.*, 2011, **101**, L44-L46.
12. S. Re, W. Nishima, N. Miyashita and Y. Sugita, *Biophys. Rev.*, 2012, **4**, 179-187.
13. S. S. Mallajosyula, K. M. Adams, J. J. Barchi and A. D. MacKerell, Jr., *J. Chem. Inf. Model.*, 2013, **53**, 1127-1137.
14. D. S. Patel, R. Pendrill, S. S. Mallajosyula, G. Widmalm and A. D. MacKerell, Jr., *J. Phys. Chem. B*, 2014, **118**, 2851-2871.
15. S. Andre, T. Kozar, R. Schuberth, C. Unverzagt, S. Kojima and H.-J. Gabius, *Biochemistry*, 2007, **46**, 6984-6995.
16. E. C. Stanca-Kaposta, D. P. Gamblin, E. J. Cocinero, J. Frey, R. T. Kroemer, A. J. Fairbanks, B. G. Davis and J. P. Simons, *J. Am. Chem. Soc.*, 2008, **130**, 10691-10696.
17. X. He, E. Hatcher, L. Eriksson, G. Widmalm and A. D. MacKerell, Jr., *J. Phys. Chem. B*, 2013, **117**, 7546-7553.
18. S. Krishnan, F. Liu, R. Abrol, J. Hodges, W. A. Goddard and N. V. Prasadarao, *J. Biol. Chem.*, 2014, **289**, 30937-30949.
19. G. Widmalm, *Carbohydr. Res.*, 2013, **378**, 123-132.
20. in *NMR Spectroscopy of Glycoconjugates*, eds. J. Jiménez-Barbero and T. Peters, Wiley-VCH Verlag GmbH & Co. KGaA, 2003.
21. A. Adeyeye, P.-E. Jansson, L. Kenne and G. Widmalm, *J. Chem. Soc. Perk. Trans. 2*, 1991, 963-973.
22. A. Kjellberg, J. Kowalewski and G. Widmalm, *J. Phys. Chem. B*, 1998, **102**, 1013-1020.
23. P. Soderman, P.-E. Jansson and G. Widmalm, *J. Chem. Soc. Perk. Trans. 2*, 1998, 639-648.
24. A. Kjellberg and G. Widmalm, *Biopolymers*, 1999, **50**, 391-399.
25. C. Höög and G. Widmalm, *Arch. Biochem. Biophys.*, 2000, **377**, 163-170.
26. A. M. Dixon, R. Venable, G. Widmalm, T. E. Bull and R. W. Pastor, *Biopolymers*, 2003, **69**, 448-460.
27. R. Eklund and G. Widmalm, *Carbohydr. Res.*, 2003, **338**, 393-398.
28. O. Guvench, S. N. Greene, G. Kamath, J. W. Brady, R. M. Venable, R. W. Pastor and A. D. Mackerell, Jr., *J. Comput. Chem.*, 2008, **29**, 2543-2564.

29. K. N. Kirschner, A. B. Yongye, S. M. Tschampel, J. Gonzalez-Outeirino, C. R. Daniels, B. L. Foley and R. J. Woods, *J. Comput. Chem.*, 2008, **29**, 622-655.
30. O. Guvench, E. Hatcher, R. M. Venable, R. W. Pastor and A. D. MacKerell, Jr., *J. Chem. Theory Comput.*, 2009, **5**, 2353-2370.
31. E. Hatcher, O. Guvench and A. D. MacKerell, Jr., *J. Phys. Chem. B*, 2009, **113**, 12466-12476.
32. E. P. Raman, O. Guvench and A. D. MacKerell, Jr., *J. Phys. Chem. B*, 2010, **114**, 12981-12994.
33. W. Plazinski, A. Lonardi and P. H. Hünenberger, *J. Comput. Chem.*, 2016, **37**, 354-365.
34. M. Yang, L. Yang, Y. Gao and H. Hu, *J. Chem. Phys.*, 2014, **141**, 044108.
35. M. Yang, J. Huang and A. D. MacKerell, *J. Chem. Theory Comput.*, 2015, **11**, 2855-2867.
36. M. Yang and A. D. MacKerell, Jr., *J. Chem. Theory Comput.*, 2015, **11**, 788-799.
37. L. Jin, K. E. Kövér, M. R. Lenoir and D. Uhrin, *J. Magn. Reson.*, 2008, **190**, 171-182.
38. R. Pendrill, O. W. Sørensen and G. Widmalm, *Magn. Reson. Chem.*, 2014, **52**, 82-86.
39. E. Säwén, T. Massad, C. Landersjö, P. Damberg and G. Widmalm, *Org. Biomol. Chem.*, 2010, **8**, 3684-3695.
40. O. Guvench, S. S. Mallajosyula, E. P. Raman, E. Hatcher, K. Vanommeslaeghe, T. J. Foster, F. W. Jamison and A. D. MacKerell, Jr., *J. Chem. Theory Comput.*, 2011, **7**, 3162-3180.
41. P. Damberg, J. Jarvet and A. Gräslund, *J. Magn. Reson.*, 2001, **148**, 343-348.
42. R. Mills, *J. Phys. Chem.*, 1973, **77**, 685-688.
43. M. Findeisen, T. Brand and S. Berger, *Magn. Reson. Chem.*, 2007, **45**, 175-178.
44. A. Meissner and O. W. Sørensen, *Magn. Reson. Chem.*, 2001, **39**, 49-52.
45. K. Stott, J. Keeler, Q. N. Van and A. J. Shaka, *J. Magn. Reson.*, 1997, **125**, 302-324.
46. H. Hu, S. A. Bradley and K. Krishnamurthy, *J. Magn. Reson.*, 2004, **171**, 201-206.
47. M. J. Thrippleton and J. Keeler, *Angew. Chem. Intl. Ed.*, 2003, **42**, 3938-3941.
48. A. Bax, R. Freeman and S. P. Kempell, *J. Am. Chem. Soc.*, 1980, **102**, 4849-4851.
49. S. Berger, *Angew. Chem. Intl. Ed.*, 1988, **27**, 1196-1197.
50. F. Delrioportilla, V. Blechta and R. Freeman, *Journal*, 1994, **111**, 132-135.
51. P.-E. Jansson, A. Kjellberg, T. Rundlof and G. Widmalm, *J. Chem. Soc. Perk. Trans. 2*, 1996, 33-37.
52. B. R. Brooks, C. L. Brooks, III, A. D. Mackerell, Jr., L. Nilsson, R. J. Petrella, B. Roux, Y. Won, G. Archontis, C. Bartels, S. Boresch, A. Caflisch, L. Caves, Q. Cui, A. R. Dinner, M. Feig, S. Fischer, J. Gao, M. Hodoscek, W. Im, K. Kuczera, T. Lazaridis, J. Ma, V. Ovchinnikov, E. Paci, R. W. Pastor, C. B. Post, J. Z. Pu, M. Schaefer, B. Tidor, R. M. Venable, H. L. Woodcock, X. Wu, W. Yang, D. M. York and M. Karplus, *J. Comput. Chem.*, 2009, **30**, 1545-1614.
53. W. L. Jorgensen, J. Chandrasekhar, J. D. Madura, R. W. Impey and M. L. Klein, *J. Chem. Phys.*, 1983, **79**, 926-935.
54. W. E. Reiher, *Theoretical studies of hydrogen bonding*, 1985.
55. E. Neria, S. Fischer and M. Karplus, *J. Chem. Phys.*, 1996, **105**, 1902-1921.
56. W. G. Hoover, *Phys. Rev. A*, 1985, **31**, 1695-1697.
57. S. E. Feller, Y. Zhang, R. W. Pastor and B. R. Brooks, *J. Chem. Phys.*, 1995, **103**, 4613-4621.
58. J.-P. Ryckaert, G. Ciccotti and H. J. C. Berendsen, *J. Comput. Phys.*, 1977, **23**, 327-341.

59. T. Darden, D. York and L. Pedersen, *J. Chem. Phys.*, 1993, **98**, 10089-10092.
60. W. Jiang, M. Hodoscek and B. Roux, *J. Chem. Theory Comput.*, 2009, **5**, 2583-2588.
61. A. D. MacKerell, Jr., M. Feig and C. L. Brooks, *J. Comput. Chem.*, 2004, **25**, 1400-1415.
62. A. D. MacKerell, Jr., M. Feig and C. L. Brooks, *J. Am. Chem. Soc.*, 2004, **126**, 698-699.
63. K. Ruud, T. Helgaker, K. L. Bak, P. Jo/rgensen and H. J. r. A. Jensen, *J. Chem. Phys.*, 1993, **99**, 3847-3859.
64. C. Lee, W. Yang and R. G. Parr, *Phys. Rev. B*, 1988, **37**, 785-789.
65. J. Breitling and A. Markus, *Cold Spring Harbor Perspectives in Biology*, 2013, **5**, a013359.
66. D. Kaur, H. Pham, G. Larrouy-Maumus, M. Rivière, V. Vissa, M. E. Guerin, G. Puzo, P. J. Brennan and M. Jackson, *PLoS One*, 2009, **4**, e5447.
67. H. Hu and K. Krishnamurthy, *J. Magn. Reson.*, 2006, **182**, 173-177.
68. S. Macur, B. T. Farmer and L. R. Brown, *J. Magn. Reson.*, 1986, **70**, 493-499.
69. A. M. Dixon, G. Widmalm and T. E. Bull, *J. Magn. Reson.*, 2000, **147**, 266-272.
70. T. Nishida, G. Widmalm and P. Sandor, *Magn. Reson. Chem.*, 1995, **33**, 596-599.
71. T. Nishida, G. Widmalm and P. Sándor, *Magn. Reson. Chem.*, 1996, **34**, 377-382.
72. M. Zerbetto, A. Polimeno, D. Kotsyubynskyy, L. Ghalebani, J. Kowalewski, E. Meirovitch, U. Olsson and G. Widmalm, *J. Chem. Phys.*, 2009, **131**, 234501.
73. R. Pendrill, O. Engström, A. Volpato, M. Zerbetto, A. Polimeno and G. Widmalm, *Phys. Chem. Chem. Phys.*, 2016, **18**, 3086-3096.
74. K. H. M. Jonsson, E. Säwén and G. Widmalm, *Org. Biomol. Chem.*, 2012, **10**, 2453-2463.
75. M. Oikawa, S. Adachi and S. Kusumoto, *Org. Lett.*, 2005, **7**, 661-664.
76. T. Church, I. Carmichael and A. S. Serianni, *Carbohydr. Res.*, 1996, **280**, 177-186.
77. F. Cloran, I. Carmichael and A. S. Serianni, *J. Am. Chem. Soc.*, 2000, **122**, 396-397.
78. D. Neuhaus, G. Wagner, M. Vasák, J. H. R. Kägi and K. Wüthrich, *Eur. J. Biochem.*, 1985, **151**, 257-273.
79. K. G. R. Pachler, *Tetrahedron*, 1971, **27**, 187-199.
80. K. G. R. Pachler, *Tetrahedron Lett.*, 1970, **11**, 1955-1958.
81. D. S. Patel, X. He and A. D. MacKerell, Jr., *J. Phys. Chem. B*, 2015, **119**, 637-652.
82. M. Jana and A. D. MacKerell, *J. Phys. Chem. B*, 2015, **119**, 7846-7859.
83. D. Cremer and J. A. Pople, *J. Am. Chem. Soc.*, 1975, **97**, 1354-1358.
84. V. S. R. Rao, P. K. Qasba, P. V. Balaji and R. Chandrasekaran, *conformation of carbohydrates*, Amsterdam : Harwood Academic, 1998.
85. R. Stenutz, I. Carmichael, G. Widmalm and A. S. Serianni, *J. Org. Chem.*, 2002, **67**, 949-958.
86. S. Jo and W. Im, *Nucleic Acids Res.*, 2013, **41**, D470-D474.
87. S. Jo, H. S. Lee, J. Skolnick and W. Im, *PLoS Comput. Biol.*, 2013, **9**, e1002946.
88. H. Masoud, M. B. Perry, J.-R. Brisson, D. Uhrin and J. C. Richards, *Can. J. Chem.*, 1994, **72**, 1466-1477.
89. T. Holme, M. Rahman, P. E. Jansson and G. Widmalm, *Eur. J. Biochem.*, 1999, **265**, 524-529.
90. K. Lycknert, P. Edebrink and G. Widmalm, *Angew. Chem. Intl. Ed.*, 2004, **43**, 2288-2290.
91. M. Frank, P. M. Collins, I. R. Peak, I. D. Grice and J. C. Wilson, *Molecules*, 2015, **20**, 14234-14253.

92. T. Rundlöf, A. Kjellberg, C. Damberg, T. Nishida and G. Widmalm, *Magn. Reson. Chem.*, 1998, **36**, 839-847.

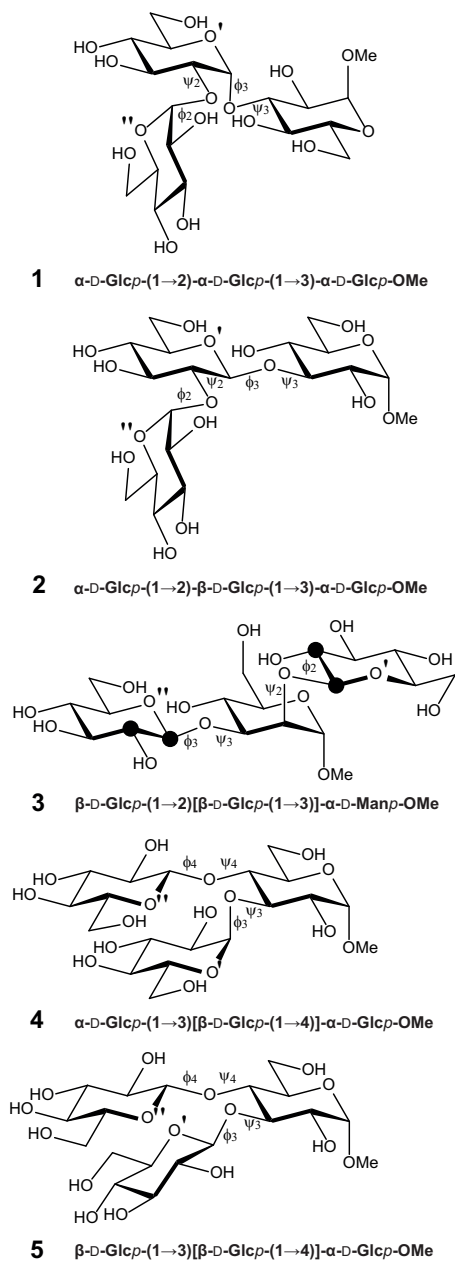


Figure 1. Schematic of trisaccharides **1** – **5**. Subscripts on glycosidic torsion angles ϕ and ψ denote the number of the carbon on the ring not containing the anomeric carbon involved in the glycosidic linkage. Atoms are specified as unprimed (*O*-methyl glycoside sugar residue), singly, or doubly primed as indicated next to the ring oxygen atoms of each residue. Atomic positions that specifically have been ^{13}C -labeled in different versions of compound **3** are highlighted by filled black circles.

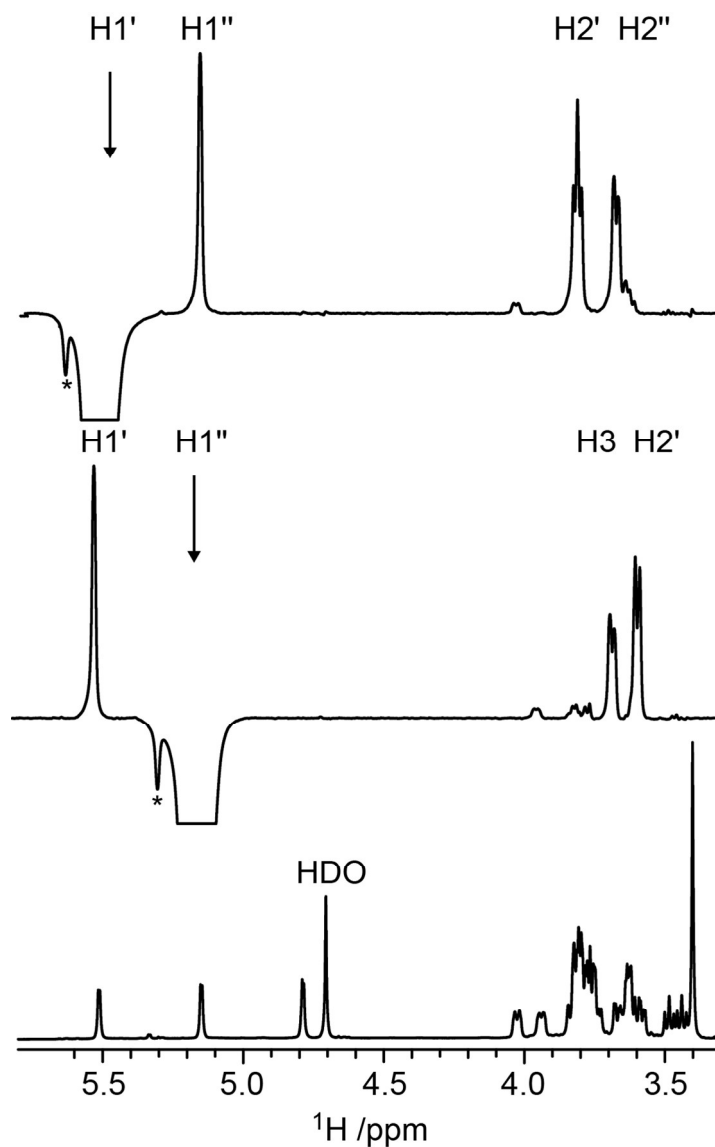


Figure 2. ^1H NMR spectrum of trisaccharide **1** (bottom) at 14.1 T; 1D $^1\text{H},^1\text{H}$ -T-ROESY NMR spectrum ($\tau_{mix} = 210$ ms) of **1** in which the anomeric proton H1'' has been selectively excited (middle); the corresponding $^1\text{H},^1\text{H}$ -T-ROESY spectrum with the anomeric proton H1' selectively excited (top). The asterisk denotes unknown impurities in the sample.

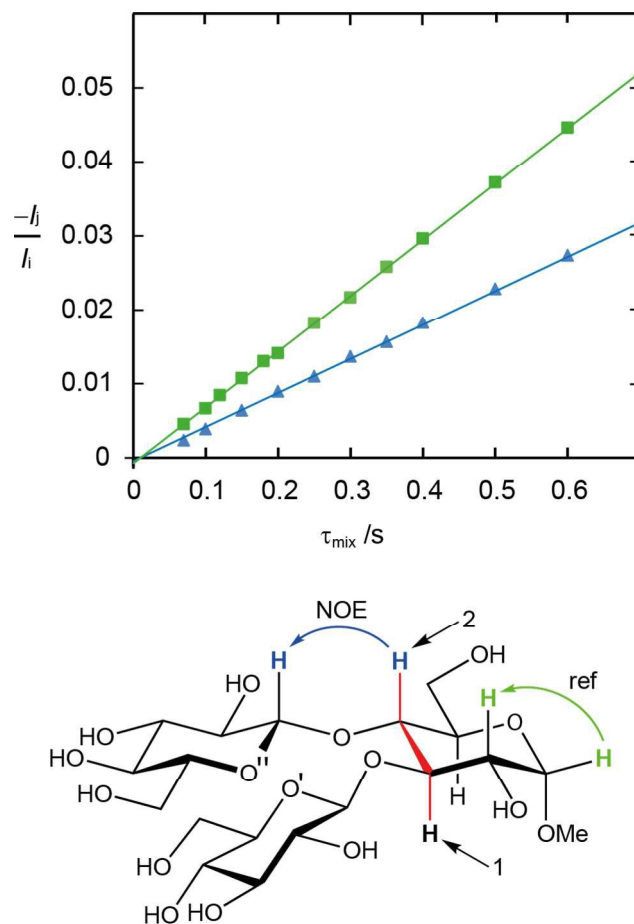


Figure 3. Schematic of the STEP-NOESY experiment for measuring the cross-relaxation rate between H4 and H1'' in trisaccharide **5**; selective excitation of H3 (1), followed by isotropic mixing transfers magnetization to H4, which then can be selectively inverted (2), for subsequent cross-relaxation to H1'' (bottom). $^1\text{H}, ^1\text{H}$ -NOE buildup curves for **5** obtained at a 600 MHz spectrometer frequency employing the PANIC approach in which $-I_j/I_i$ vs. τ_{mix} are plotted. The cross-relaxation rates are obtained from the slopes of the fitted data: H4-H1'' (filled blue triangles) and the reference distance H1-H2 (filled green squares) (top); the NMR data of the latter interaction were obtained from a 1D NOESY experiment.

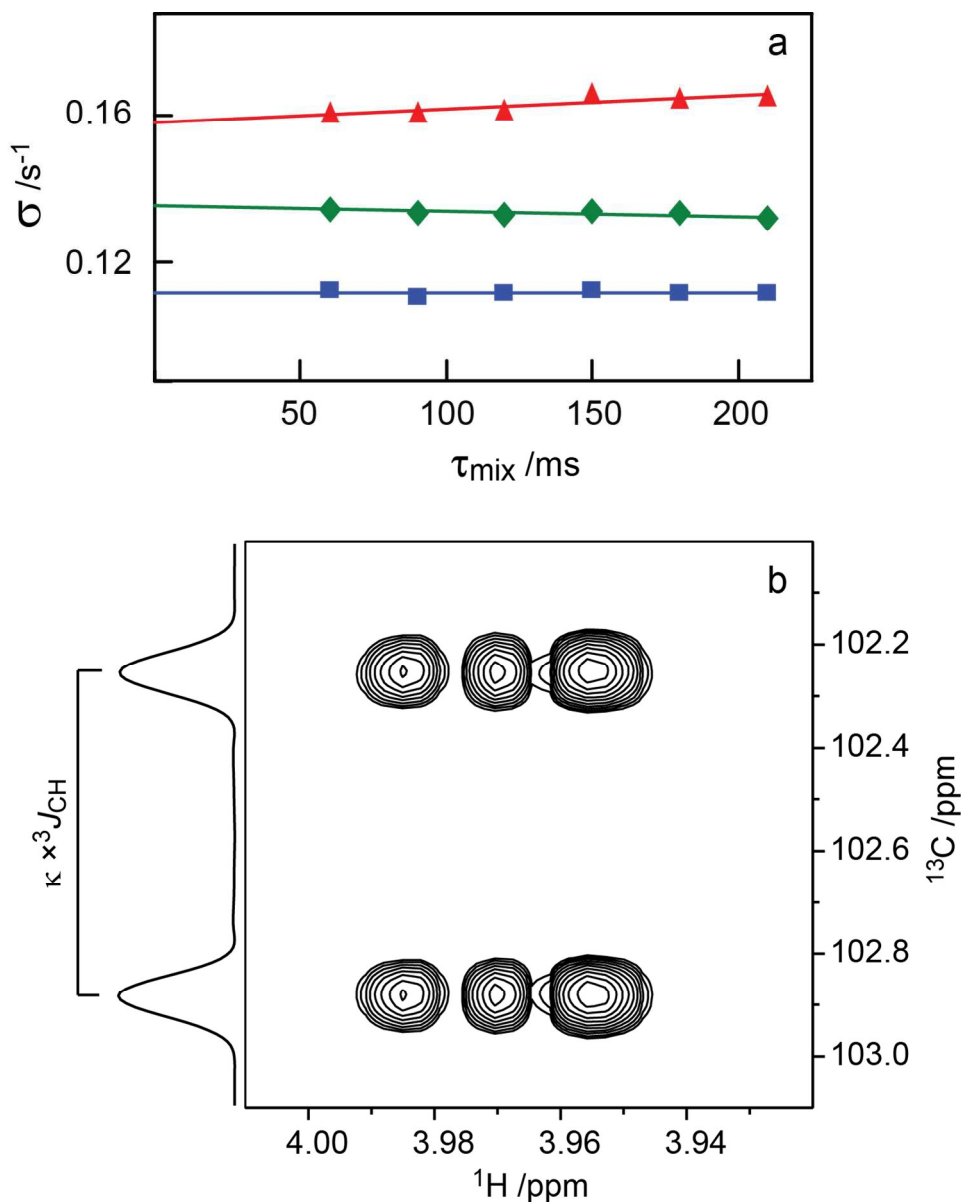


Figure 4. (a) Plots of $-I_j(\tau_{\text{mix}})/[\tau_{\text{mix}}I_i]$ versus τ_{mix} for the 1D ^1H , ^1H -T-ROESY experiment applied to trisaccharide **1** (cf. Figure 2). Selective excitation was carried out for the resonance from H1' and cross-relaxation observed to H3 (red filled triangle), H1'' (green filled diamond) and H2' (blue filled square) were investigated. (b) Selected spectral region of the ^1H , ^{13}C -J-HMBC NMR spectrum of **4** recorded with $\kappa = 20.6$ showing the cross-peak between C1'' and H4. The $^3J_{\text{C1'',H4}}$ coupling constant is obtained from the cross-peak separation in the F_1 -dimension by dividing by the scaling factor κ . The 1D projection is plotted to the left the 2D spectrum.

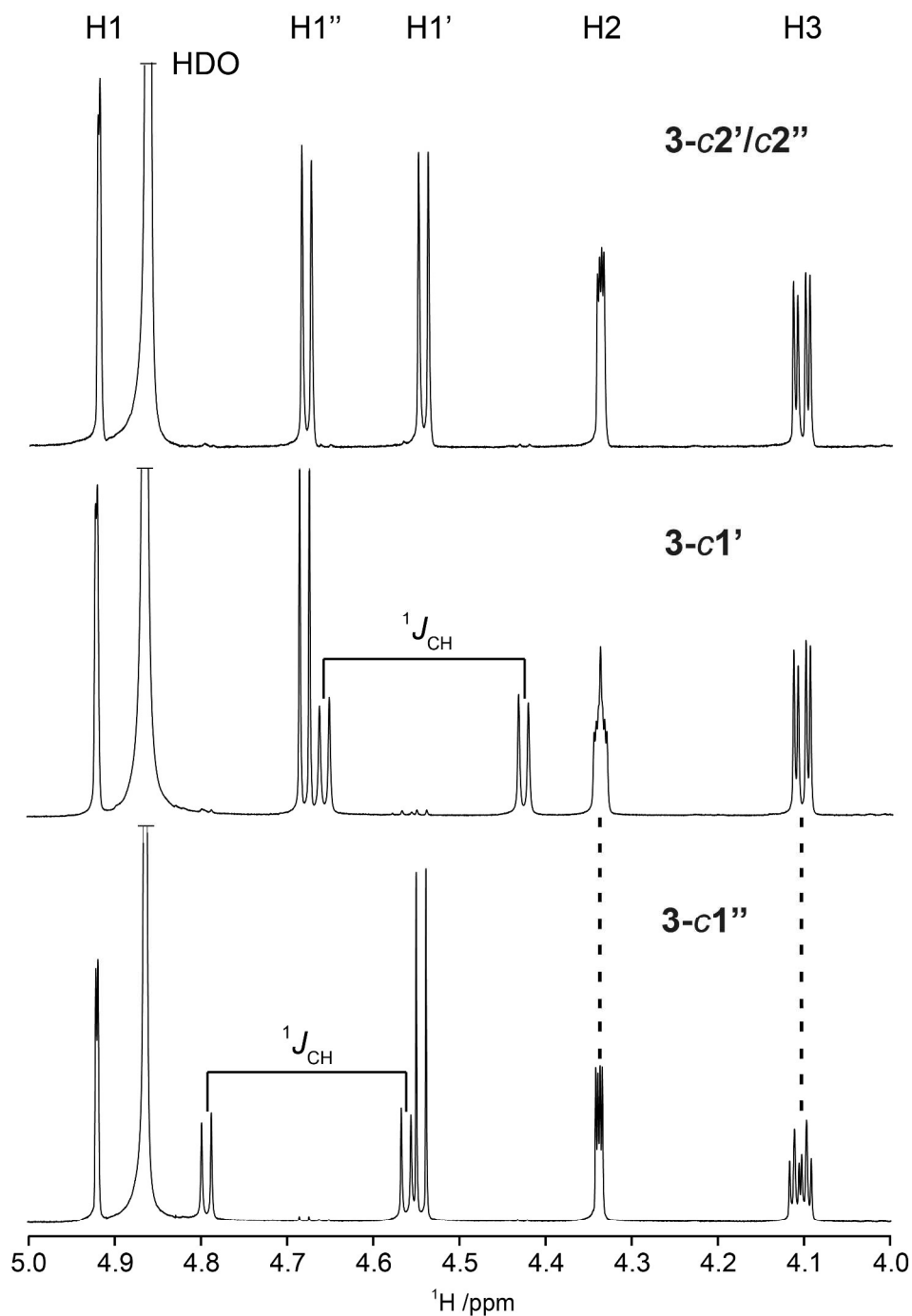


Figure 5. Selected region of ^1H NMR spectra of compound **3-c2'/c2''** (top), compound **3-c1'** (middle) and compound **3-c1''** (bottom) recorded at 16.4 T and a temperature of 290 K. The site-specific ^{13}C -labeling of C1' and C1'' splits H1' and H1'', respectively, by 161 Hz; the influence of $^3J_{\text{C1}',\text{H2}}$ and $^3J_{\text{C1}'',\text{H3}}$ are clearly visible for compounds **3-c1'** and **3-c1''**, respectively.

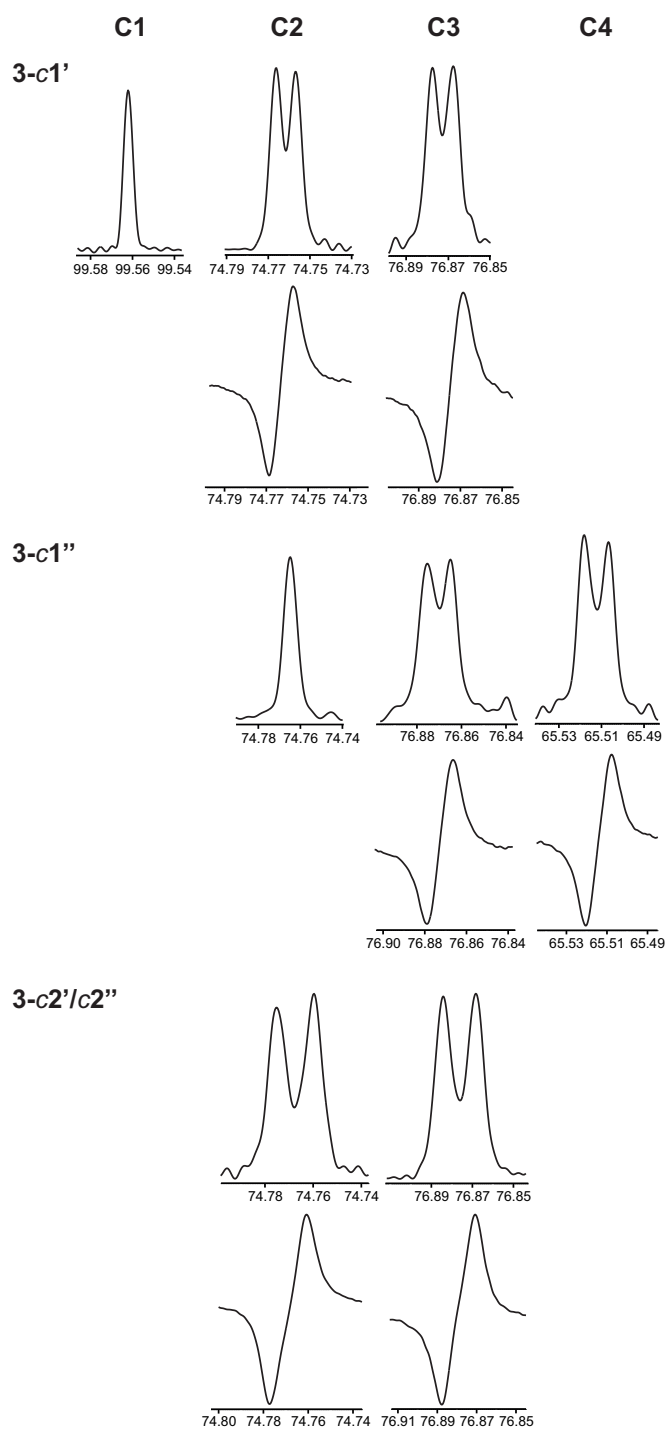


Figure 6. ^{13}C NMR resonances from C1 – C4 of the mannose residue in trisaccharides **3-c1'**, **3-c1''** and **3-c2'/c2''** extracted from 1D spectra (in-phase peaks) and from 1D $^1\text{INADEQUATE}$ spectra (anti-phase peaks). Chemical shifts are reported in ppm.

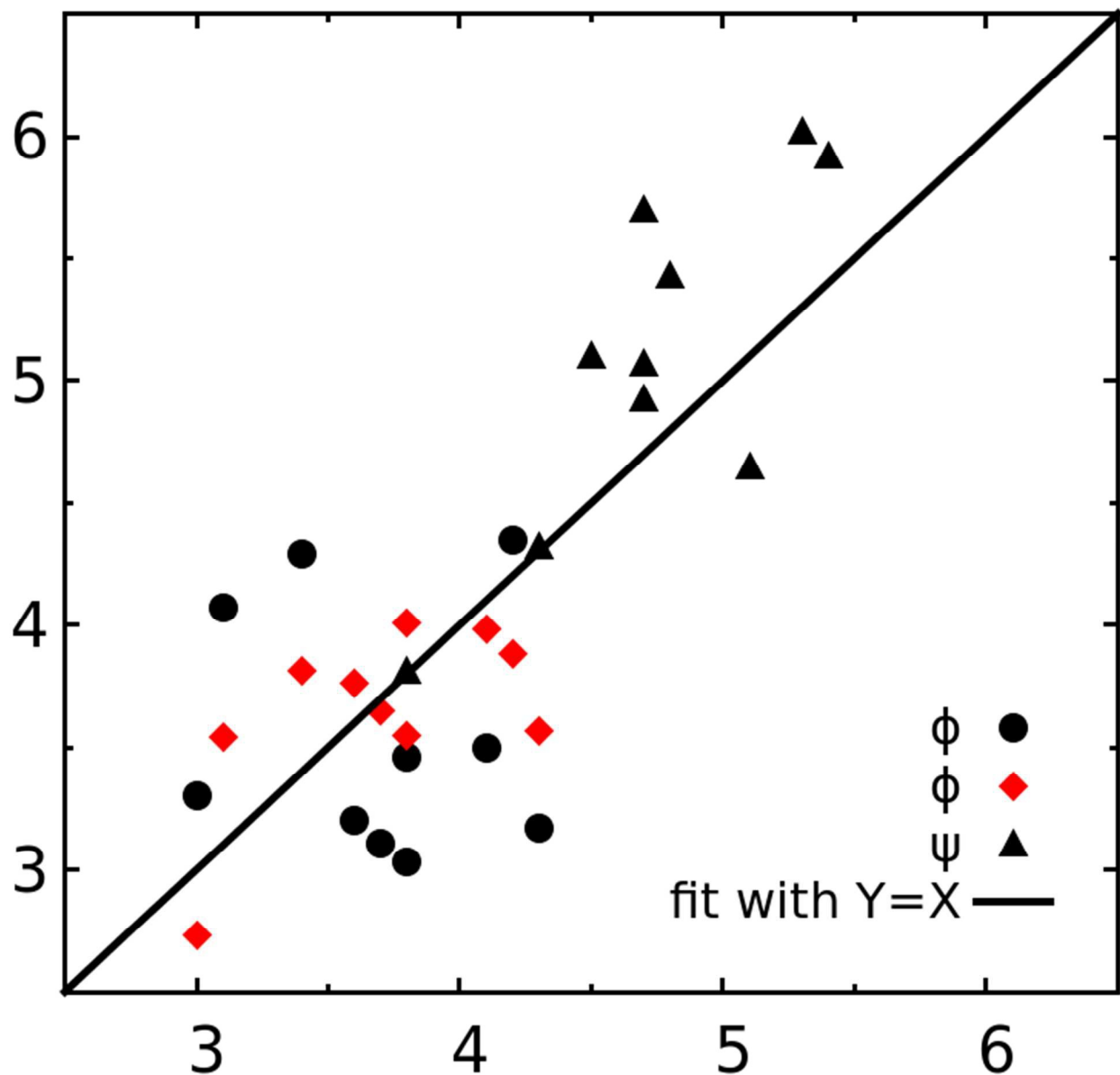


Figure 7. Comparison of the computed and experimental NMR J coupling constants (in Hz). Black filled circles and triangles represent the computed J coupling constants from eq. (1-2) and red square are calculated with eq. (7).

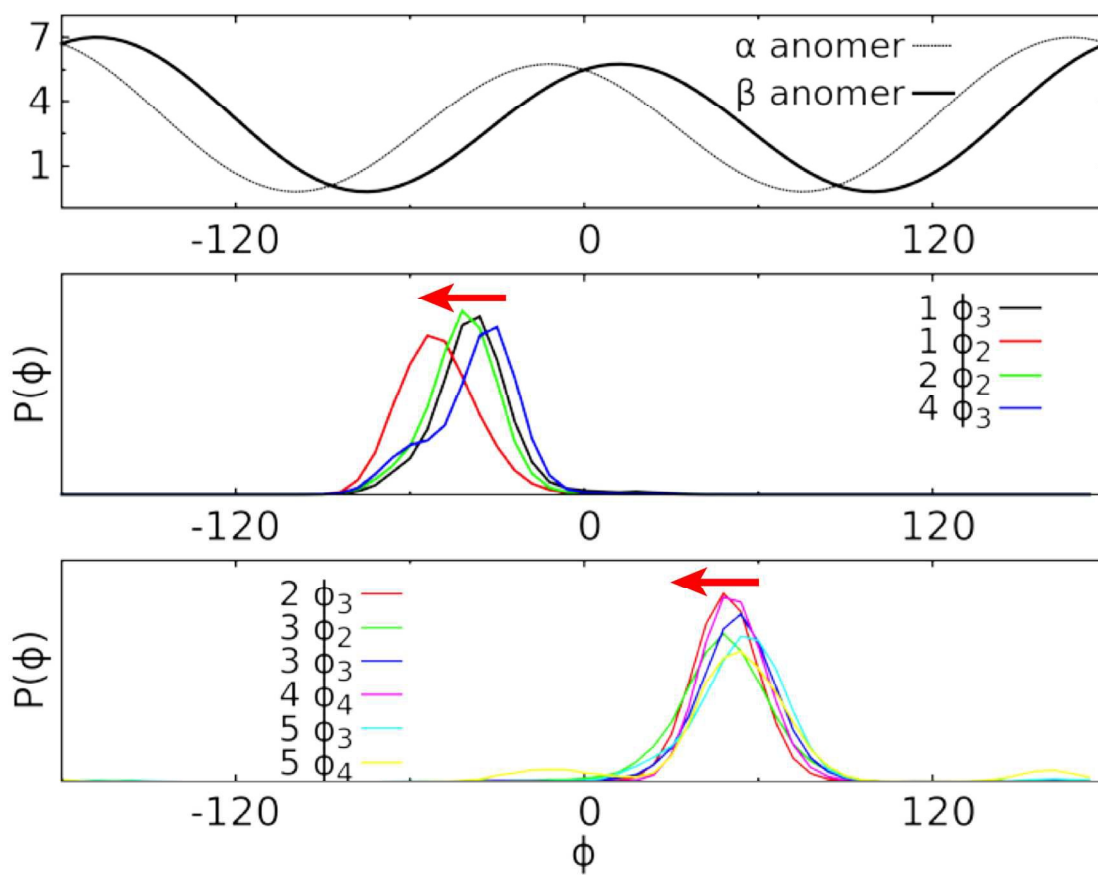


Figure 8. Plot of Karplus equation for $^3J_{CH}$ (in Hz) along the torsional angle ϕ (in degree) based on eq. (1) (top) and the probability distribution of ϕ in each trisaccharide for the sugar residues having the the α - or β -anomeric configuration at the non-reducing end (middle and bottom panels, respectively). Red arrows indicate that an additional left-shift of the distribution can reduce the systematic deviation between computed and experimental values. The probability distribution of ϕ was computed using the frames recorded in the ground state replica of HREST-BP simulations with a bin size of 6° .

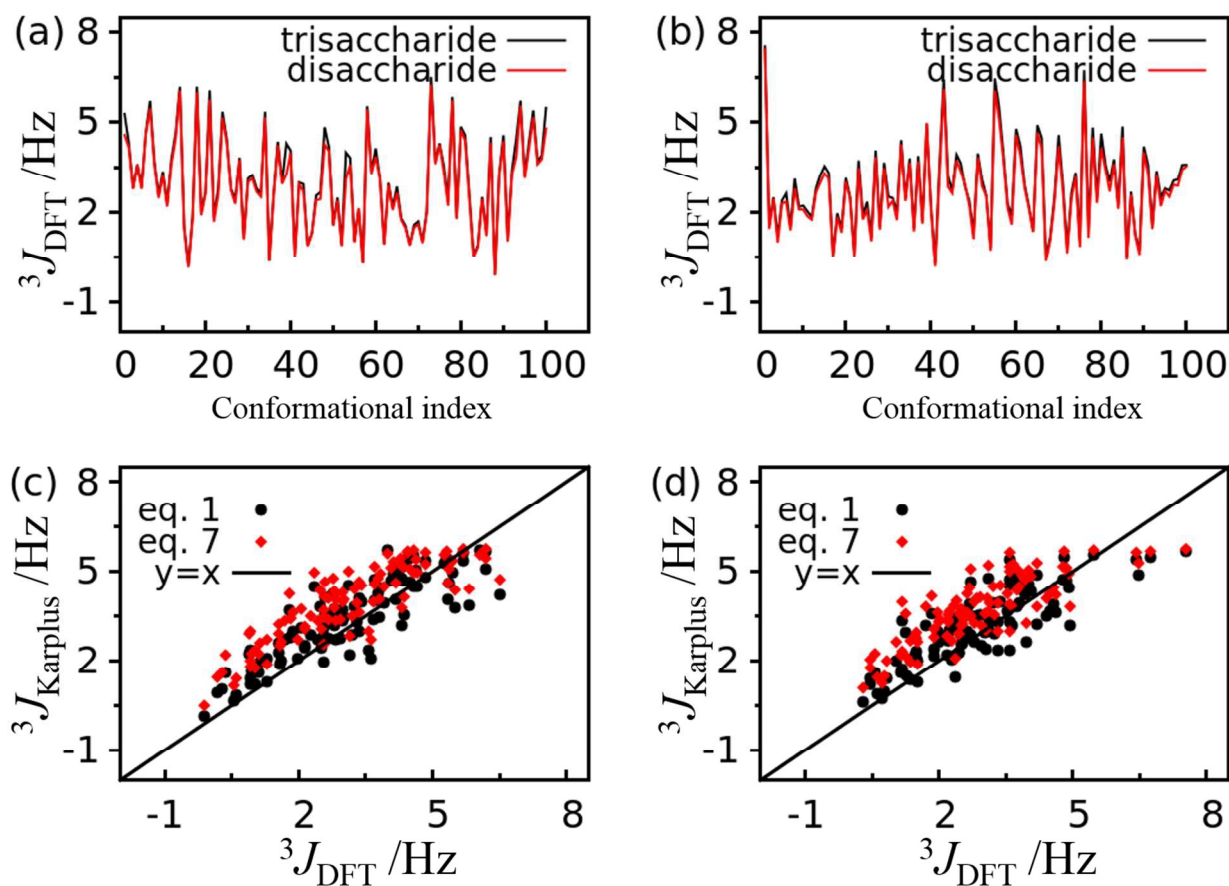


Figure 9. $^3J_{\text{CH}}$ coupling constants computed from Karplus equations (1) and (7) and DFT/B3LYP/6-31G* calculations for trisaccharide **3**. (a) Comparison of $^3J_{\text{CH}}$ coupling constants from each conformation of the trisaccharide and the corresponding disaccharide along glycosidic dihedral $\phi = \text{H1}'\text{-C1}'\text{-O2-C2}$. (b) Comparison of $^3J_{\text{CH}}$ coupling constants from each conformation of the trisaccharide and the corresponding disaccharide along glycosidic dihedral $\phi = \text{H1}''\text{-C1}''\text{-O3-C3}$. (c) Comparison of $^3J_{\text{CH}}$ coupling constants computed from Karplus equation 1 and DFT for each trisaccharide conformation along glycosidic dihedral $\phi = \text{H1}'\text{-C1}'\text{-O2-C2}$. (d) Comparison of $^3J_{\text{CH}}$ coupling constants computed from Karplus equation 7 and DFT for each trisaccharide conformation along glycosidic dihedral $\phi = \text{H1}''\text{-C1}''\text{-O3-C3}$.

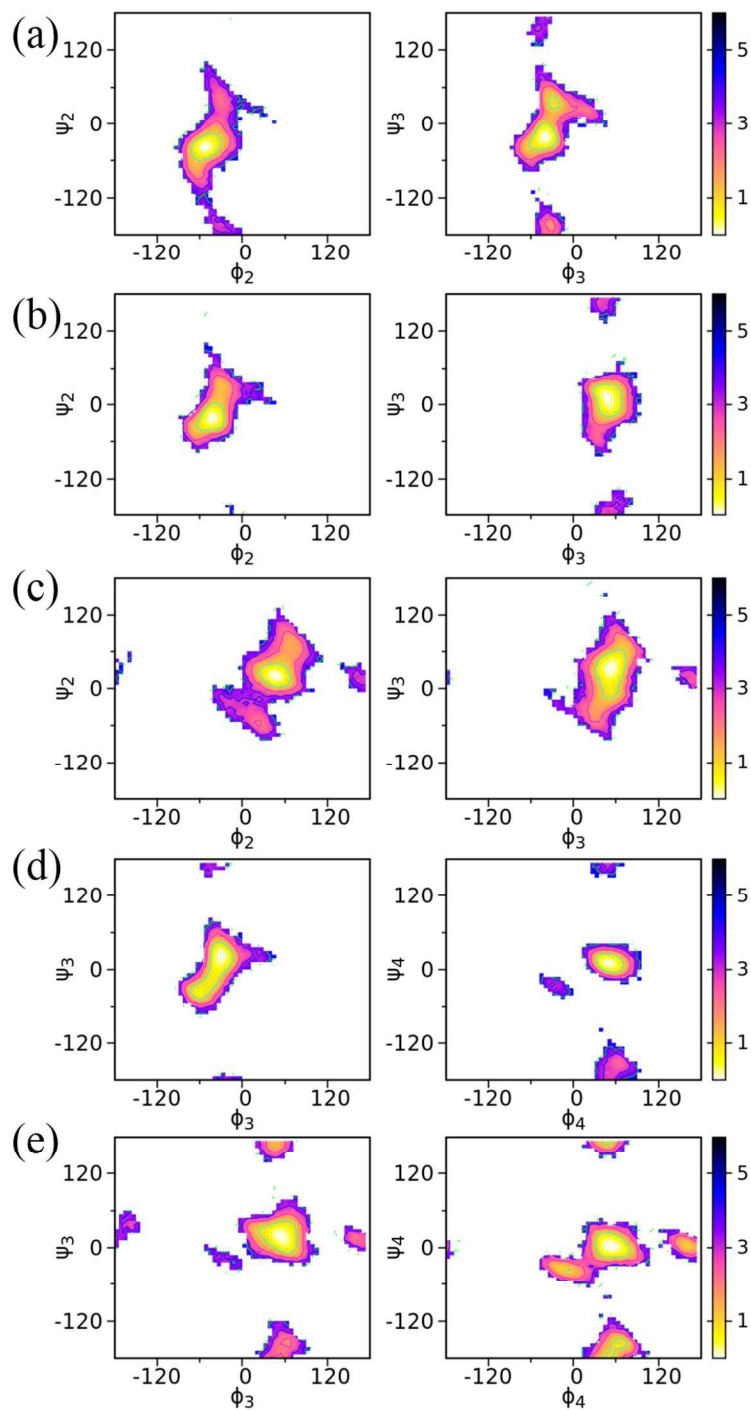


Figure 10. 2D Potential of mean force (PMF) profiles along the glycosidic linkage dihedrals in trisaccharides **1** (a), **2** (b), **3** (c), **4** (d) and **5** (e). The definition of the torsion angles (in degree) is shown in the structural models in Figure 1.

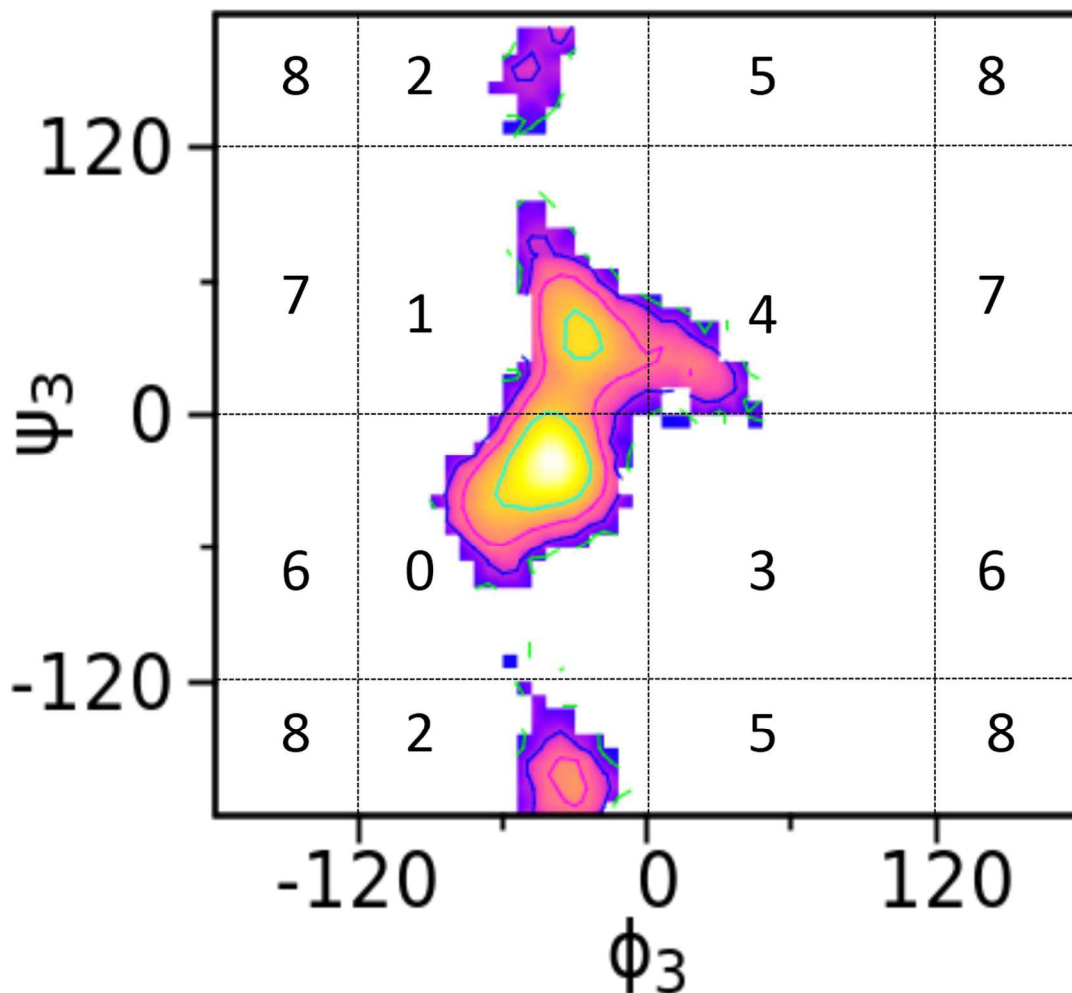


Figure 11. Index of free energy minima for each glycosidic linkage used in the dihedral-based clustering. The α -(1 \rightarrow 3)-linkage in trisaccharide **1** is used as an example. Torsion angles are given in degree.

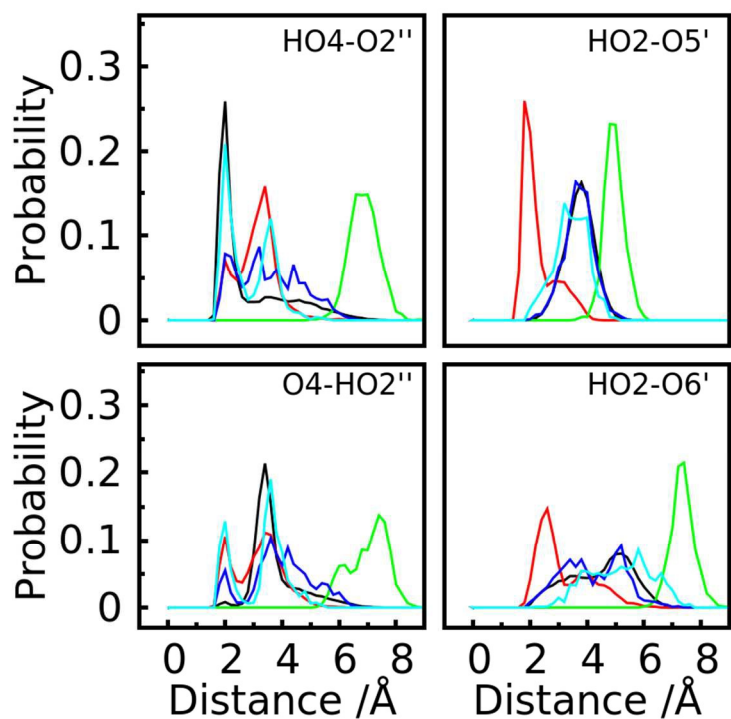


Figure 12. Probability distribution of hydrogen bonding interaction pairs (labeled in the figure for proton to acceptor distance) between different monosaccharides in the first five clusters of trisaccharide **1**. GL clusters are colored black for cluster 1, red for cluster 2, green for cluster 3, blue for cluster 4 and cyan for cluster 5.

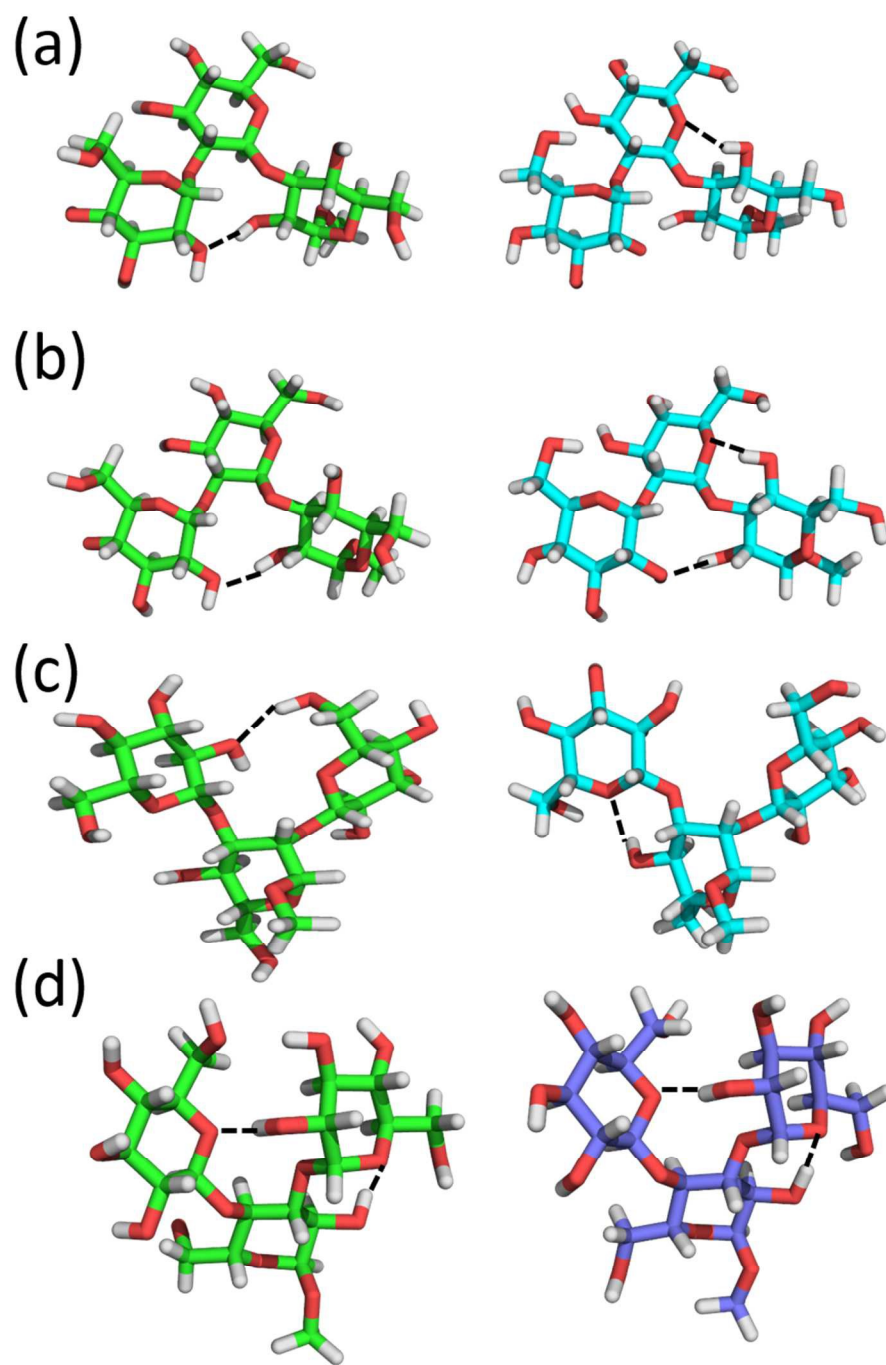


Figure 13. Structural models of the hydrogen bond interactions (dashed line) in different GL clusters of trisaccharides **1** – **4**. (a) GL cluster 1 (left) and 2 (right) of trisaccharide **1**. (b) GL cluster 1 (left) and 2 (right) of trisaccharide **2**. (c) GL cluster 1 (left) and 2 (right) of trisaccharide **3**. (d) GL cluster 1 (left) and 3 (right) of trisaccharide **4**.

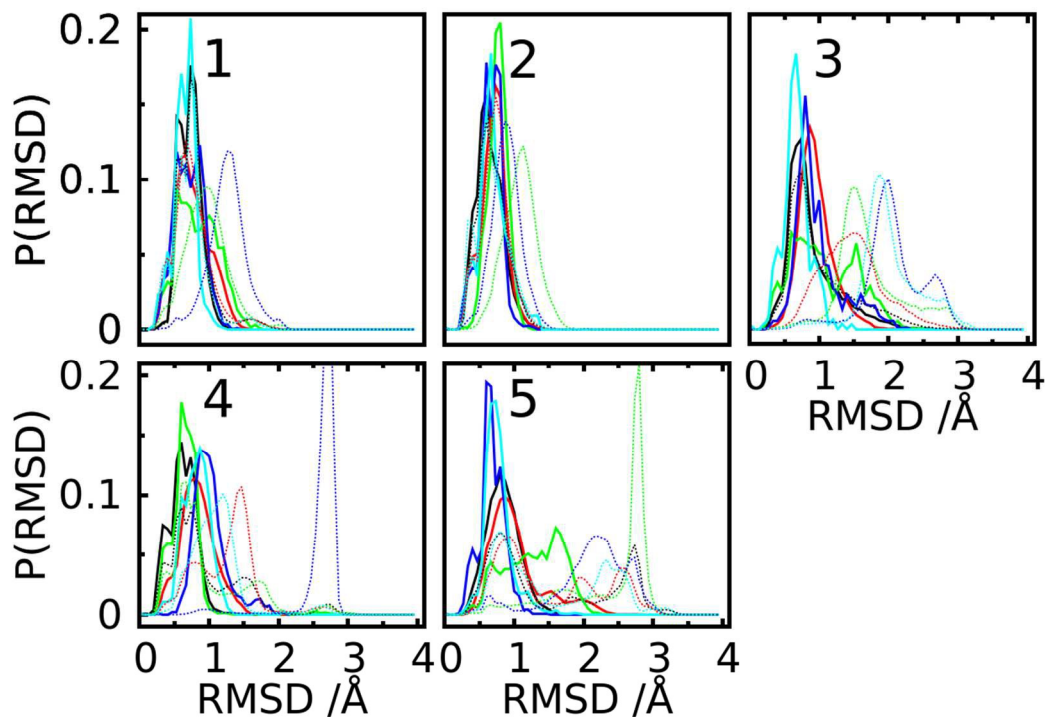


Figure 14. Distribution of the RMSD values for the first five dihedral-based clusters in each simulation of trisaccharides **1** – **5**. Solid lines represents RMSD values computed using conformations only in the given cluster with respect to the central conformation of the cluster; dotted lines correspond to the RMSD for all conformations in the trajectory relative to the same reference as the respective solid line with same color represented. Each conformation in one cluster or the whole trajectory was first aligned to the reducing-end monosaccharide, i.e. the *O*-methyl glycoside residue, of the reference state and then the RMSD was computed for all atoms in the other two monosaccharides. GL clusters are colored black for cluster 1, red for cluster 2, green for cluster 3, blue for cluster 4 and cyan for cluster 5.

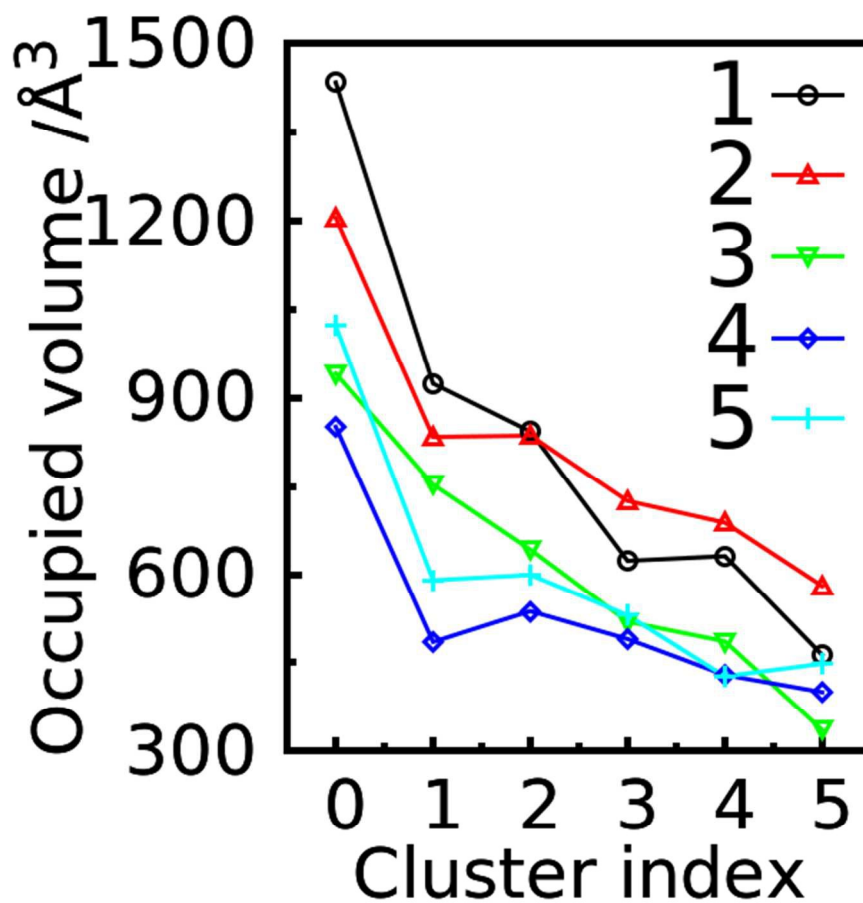


Figure 15. The occupied volume for conformations in the first five clusters or the whole trajectory (cluster 0) in the simulations of trisaccharides **1** – **5** based on the number of occupied voxels. The spatial occupancy was computed by aligning the reducing-end monosaccharide of each conformation to the reference state and then assigning each non-hydrogen atom of a conformation into one voxel. The voxel size is defined as $1\text{\AA}\times 1\text{\AA}\times 1\text{\AA}$.

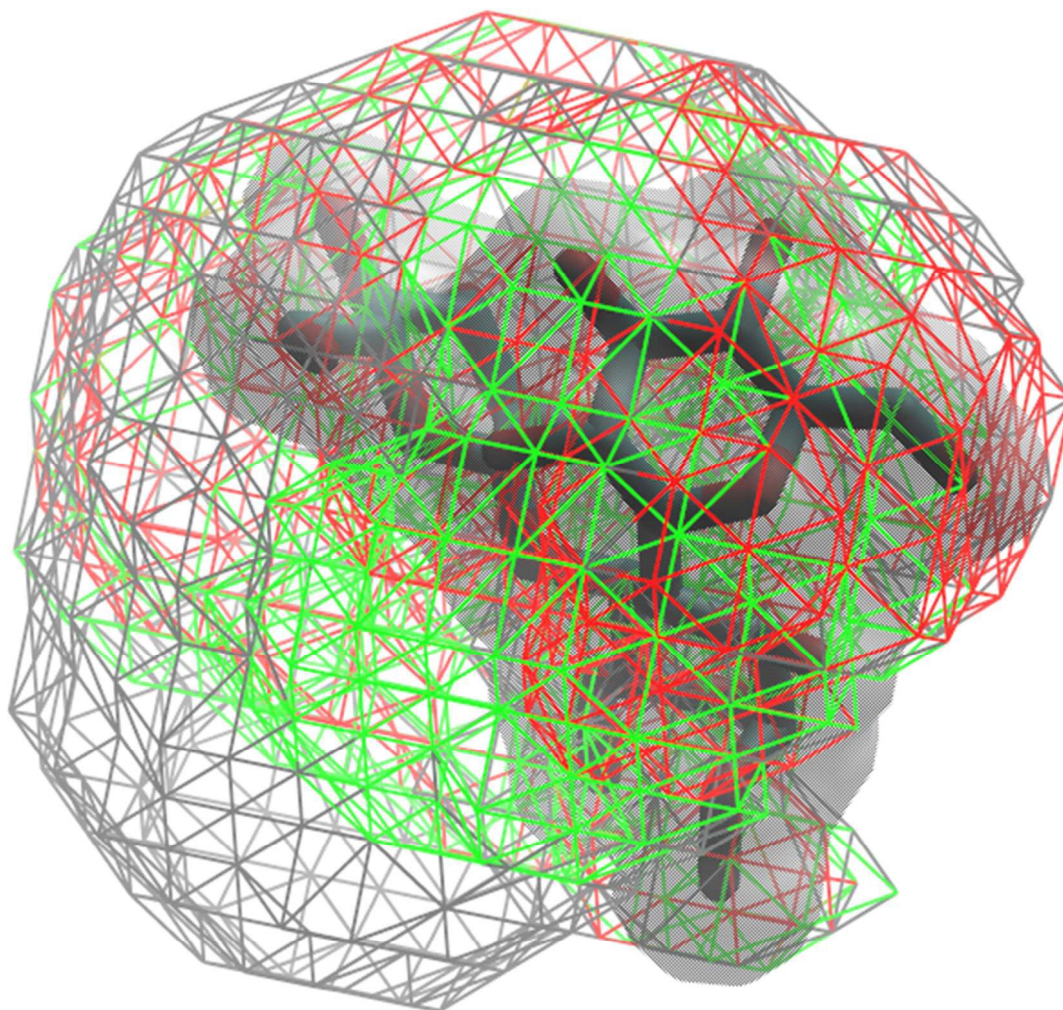


Figure 16. 3D spatial distribution of the sampled conformations for trisaccharide **4**. The occupied volume for the entire trajectory, GL clusters 1 and 2 are shown in wireframes and colored in gray, red and green, respectively. The solid surface in gray represents the van der Waals surface of a selected conformation of the trisaccharide. Conformations were aligned based on the *O*-methyl monosaccharide (Figure 1).