

# Journal of Materials Chemistry A

Accepted Manuscript



This is an *Accepted Manuscript*, which has been through the Royal Society of Chemistry peer review process and has been accepted for publication.

*Accepted Manuscripts* are published online shortly after acceptance, before technical editing, formatting and proof reading. Using this free service, authors can make their results available to the community, in citable form, before we publish the edited article. We will replace this *Accepted Manuscript* with the edited and formatted *Advance Article* as soon as it is available.

You can find more information about *Accepted Manuscripts* in the [Information for Authors](#).

Please note that technical editing may introduce minor changes to the text and/or graphics, which may alter content. The journal's standard [Terms & Conditions](#) and the [Ethical guidelines](#) still apply. In no event shall the Royal Society of Chemistry be held responsible for any errors or omissions in this *Accepted Manuscript* or any consequences arising from the use of any information it contains.

## Catalyst-free growth of carbon nanotube arrays directly on Inconel<sup>®</sup> substrates for electrochemical carbon-based electrodes

R.M. Silva<sup>a,b</sup>, A.C. Bastos<sup>a</sup>, F.J. Oliveira<sup>a</sup>, D.E. Conte<sup>b</sup>, Y.F. Fan<sup>b</sup>, N. Pinna<sup>b,\*</sup>, R.F. Silva<sup>a,\*</sup>

<sup>a</sup>*Department of Materials and Ceramic Engineering, CICECO, University of Aveiro, 3810-193 Aveiro, Portugal.*

<sup>b</sup>*Institut für Chemie, Humboldt-Universität zu Berlin, Brook-Taylor-Str. 2, 12489 Berlin, Germany.*

Corresponding author email: nicola.pinna@hu-berlin.de, rsilva@ua.pt

### Abstract

Vertically aligned carbon nanotubes (VACNTs) were grown directly on a pretreated Inconel<sup>®</sup> metallic substrate by thermal chemical vapor deposition without the need of catalyst addition. This experimental approach allows the substrate surface to act as both the catalyst and support for the CNTs growth therefore enhancing the connection between the two. It was found that uniformly dispersed and densely packed nano-sized, intrinsic catalytic particles, generated during the annealing pretreatment, allow the growth of the vertically aligned CNTs. Scanning electron microscopy, transmission electron microscopy and Raman spectroscopy were used to assess the quality and the nature of the formed CNTs. Electrochemical measurements were performed to evaluate the possibility to use the Inconel/VACNTs system as an electrode material. As a proof of concept, the capacitive behavior of the VACNTs arrays coupled to the Inconel substrate as the active electrode material and the current collector, respectively, in supercapacitors is demonstrated.

### 1. Introduction

Direct growth of vertically-aligned carbon nanotubes (VACNTs) on metallic substrates is of great interest for applications such as high surface area electrodes for sensors, electrochemical capacitors and lithium-ion batteries [1,2]. Moreover, it is of utmost importance to have VACNTs directly grown on metallic current collectors. This strategy enables the elaboration of binder-free electrodes and the formation of robust CNT-metal contacts during the growth. In this context, one-step electrode preparation is more attractive and powerful than the transfer technique consisting in, firstly, detaching the VACNTs from the original substrate and then, depositing them onto the conductive substrates with the help of binders to fabricate VACNTs electrodes [3]. As a matter of

fact, the use of binders may occlude the surface of the nanotubes which could affect their electrochemical properties, stressing out the necessity to grow VACNTs directly on the metallic current collector. Among the several metallic alloys, Inconel<sup>®</sup> 600 (Inconel) has been used as a conductive substrate to grow aligned nanotubes by vapor-phase catalyst delivery method [1, 4-6]. This Ni-based superalloy is a standard engineering material for applications that require resistance to corrosion and heat.

CNT growth by thermal chemical vapor deposition (TCVD) is a widely applied synthesis technique for the production of CNTs. In the available literature, the TCVD growth of VACNTs is reported for insulating and nonmetallic substrates, such as alumina and silicon oxide, coated with a thin film catalyst (e.g. Fe). This approach can be seen as a two-stage process: (i) the restructuring of the catalyst thin film into catalytically active nano-sized particles (e.g. by annealing under a reductive atmosphere) and (ii) graphitic network formation and CNT growth from a carbon feedstock [7]. For example, this approach permitted to grow VACNTs on Al<sub>2</sub>O<sub>3</sub>-buffered superalloy Inconel 718 coated with a catalytic Fe film by e-beam evaporation, following the same approach used for insulating substrates [8].

The direct growth of CNTs on metallic substrates by TCVD without a prior ex-situ deposition of a catalyst (e.g. transition metals such as Fe, Ni or Co) and oxide buffer layer (e.g. Al<sub>2</sub>O<sub>3</sub>) or by assisting the process via vapor-phase delivering of the catalyst has proven to be very challenging [9]. The process would rely on the in-situ formation of nano-sized catalyst particles onto the Inconel surface. For example, Yi et al. [9] used plasma enhanced hot filament CVD technique to grow VACNTs on oxidized Inconel 600 plates without addition of catalyst, evidencing that the Inconel itself can provide catalytic active sites for CNTs growth and their alignment mechanism has also been proposed [10].

In this work, we demonstrate that VACNTs can be successfully grown directly on polished and heat treated Inconel substrate by the TCVD technique, without the addition of external catalyst. This simpler approach was optimized to accomplish the growth of VACNTs as a uniform and dense layer on the metallic substrate. In order to prove the good electric contact between the substrate and the carbon nanotubes and its good electrical properties, the VACNTs array coupled to the Inconel was directly used as an electrode material in supercapacitors operating in aqueous Na<sub>2</sub>SO<sub>4</sub> electrolyte.

## 2. Experimental

### 2.1. Sample preparation

A 15 x 15 cm<sup>2</sup> Inconel<sup>®</sup> 600 (main composition: Ni-72 wt.%, Cr-16 wt.%, Fe-8wt.%) sheet with a thickness of 0.1 mm was purchased from Goodfellow and subsequently cut into 1 x 1 cm<sup>2</sup> size samples. These were mechanically polished with SiC grinding paper (grit 4000), cleaned with ethanol and dried with N<sub>2</sub>. The Inconel substrates were placed in a quartz boat and inserted into the TCVD furnace for a heat treatment of 45s at 850 °C in air to oxidize the surface [5].

### 2.2 Growth of VACNTs on Inconel substrates

The VACNT arrays were grown by TCVD technique in a furnace consisting of an horizontal mounted quartz tube (diameter ~ 5cm) coupled to a thermal heater, equipped with various gas lines and standard mass flow controllers to regulate the flow of carbon source (acetylene ≥ 99.6%), reducing gas (hydrogen ≥ 99.999%) and inert gas (argon ≥ 99.999%). More details of the CVD set-up are given elsewhere [7].

The reactor was evacuated to 3.0 x 10<sup>-3</sup> mbar with a rotary pump and subsequently filled with Ar up to atmospheric pressure. Substrates were placed in a region of the furnace where the temperature is 650 °C, under a flow of Ar (1000 sccm) for 5 minutes, followed by a pretreatment in a reductive flow of H<sub>2</sub> (500 sccm) and Ar (100 sccm) for 1 minute (i.e. annealing step). Immediately after, C<sub>2</sub>H<sub>2</sub> (10 sccm), H<sub>2</sub> (100 sccm) and Ar (400 sccm) were introduced for 15 minutes. The gas flows were stopped and the samples removed from the furnace and cooled down to room temperature.

### 2.3 Sample characterization

Scanning electron microscopy (SEM) was performed with a Hitachi SU-70 microscope operated in secondary electron mode at 15 kV equipped with energy dispersive X-ray spectroscopy (EDS). A polished and heat treated Inconel substrate was cut into ~0.5 x 1 cm<sup>2</sup> slices for SEM cross-section observation. Since the Inconel substrates do not remain flat after cutting, samples were sandwiched between two pieces of Si wafer by means of a thermally activated two component epoxy resin. A hot-mounting press metallographic preparation was then carried out for the polishing procedure of the Inconel/Si interface by a sequence of SiC grinding papers finalized by colloidal silica. The Inconel substrate top surfaces were also characterized by grazing incident X-ray diffraction (XRD) technique using a Rigaku Geigerflex D Max-C Series Diffractometer

equipped with Cu K $\alpha$  radiation ( $\lambda=1.5418 \text{ \AA}$ ). The scan time and step size were of 100 s and  $0.02 \text{ } 2\theta^\circ$  respectively, with the sample mounted in the thin film geometry arrangement. Glow Discharge Optical Emission Spectroscopy (GDOES) technique using a Jobin Yvon HORIBA GD Profiler was employed in order to obtain the elemental depth profile from the Inconel substrate surface.

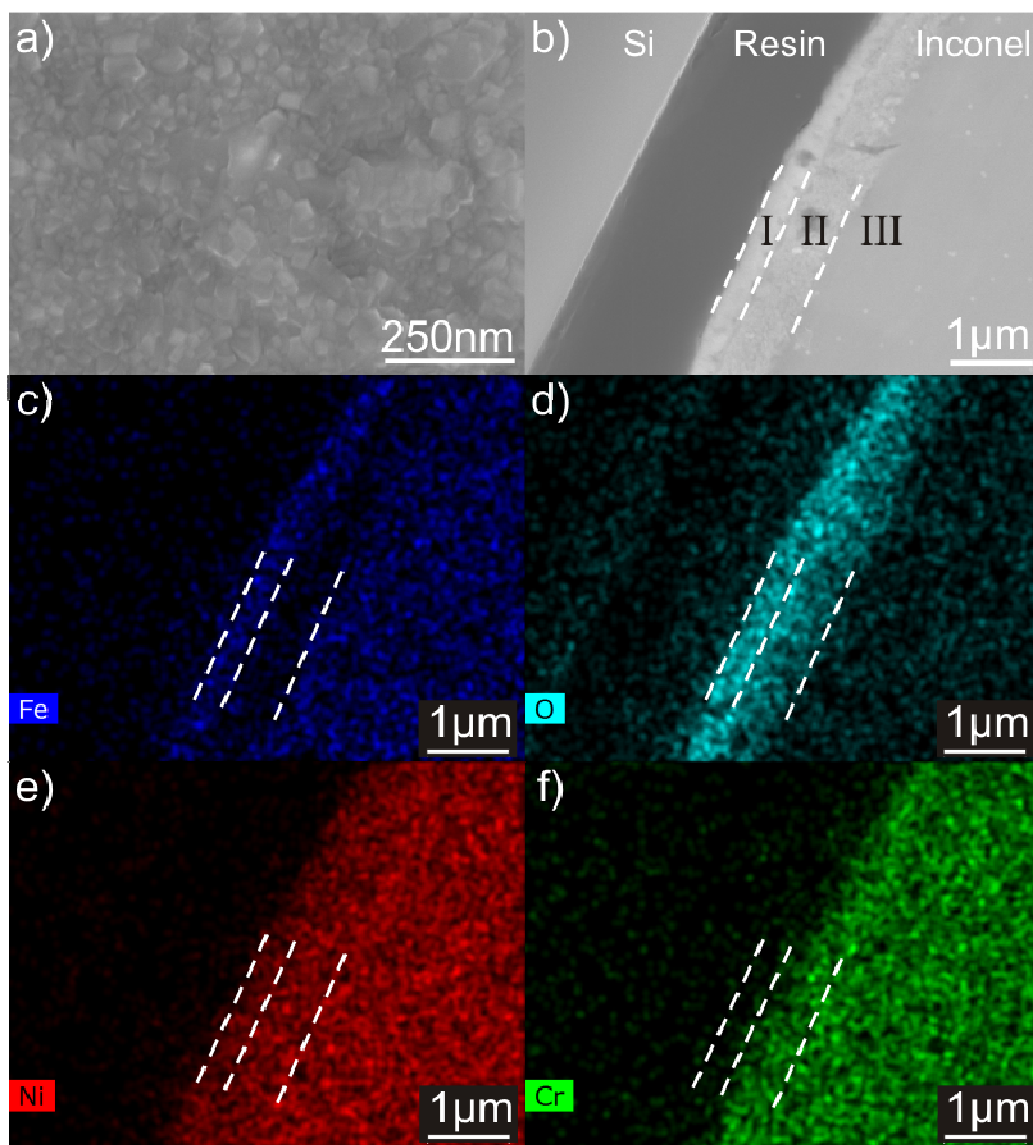
A 3D surface optical profiler (Sensofar S NEOX) was used for the measurement of the VACNTs height. Cross sections of the VACNTs were also observed by SEM, with  $45^\circ$  tilting, after removing them from the substrate surface. Transmission electron microscopy (TEM) measurements as well the selected area electron diffraction (SAED) on the CNTs was carried out on a JEOL JEM-2200FS or on a Philips CM200 LaB $_6$  microscopes operated at 200 kV. Samples for TEM observations were prepared by deposition a drop of a diluted ethanol dispersion of the CNTs (previously sonicated for a few seconds) on a holey carbon grid; the solvent was allowed to dry in air. Raman spectroscopy (Jobin Yvon T64000) was carried out at a 532 nm excitation wavelength on the as-grown VACNTs in order to evaluate their quality in terms of amorphous carbon content. The electrochemical measurements were performed using a Bio-Logic VMP3 Potentiostat-Galvanostat (Science Instruments). The experiments were conducted in a three-electrode electrochemical set-up, where the CNTs/Inconel was used as the working electrode, with platinum foil as the counter electrode and a standard silver/silver chloride electrode (Ag/AgCl) as the reference electrode. The electrolyte (1 M Na $_2$ SO $_4$ ) was prepared from Na $_2$ SO $_4$  (Sigma Aldrich, 99.0%) and Millipore water. The solution was degassed with Ar before and during the measurements. The electrochemical impedance spectroscopy (EIS) studies were carried out in the frequency region from 0.01 to 100,000 Hz with the test signal amplitude of 5 mV.

### 3. Results and discussion

#### 3.1. Surface features of Inconel substrates

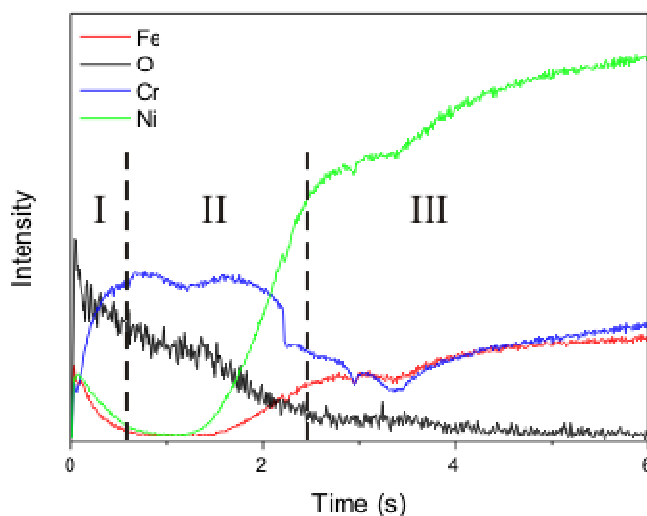
The XRD patterns of the as-received and the heat-treated surfaces of the Inconel substrate are shown in Figure S1 (Supplementary Information). The XRD pattern of the as-received surface only reveals the presence of nickel, the main constituent of Inconel<sup>®</sup> 600. After the heat treatment, the emergence of hematite (Fe $_2$ O $_3$ , JCPDS #01-088-2359) and iron-nickel alloy (Fe $_{0.916}$ Ni $_{0.084}$ , JCPDS #01-081-8233) can be observed. The surface of the heat-treated Inconel substrate under an SEM is shown in Figure 1a

revealing a granular morphology. This appearance is totally distinct from that of the Inconel substrates, prior to the heat treatment, as presented in Supplementary Material, where SEM micrographs of the bare (Figure S2a) and polished surfaces (Figure S2b) are presented. Figure 1b shows the SEM cross section image through the Si-resin-Inconel assembly. Three different regions are distinctly observed: I and II are clearly modified microstructures probably resulting from the oxidation treatment of the Inconel alloy whose bare microstructure is shown in region III, this finding is also supported by the Figure S3 (Supplementary Information). In order to elucidate the nature of such regions, EDS elemental mapping of iron (Fe), oxygen (O), nickel (Ni) and chromium (Cr) was performed, (Figures 1c to f). The most evident elemental features are: i) the oxygen-enriched surface in agreement with the XRD data (Figure S1); ii) an outermost layer, region I, with a high concentration of iron and a visible chromium depletion; iii) a subsurface, region II, with exactly the opposite property, i.e. lack of iron and chromium enrichment; iv) the variation in the nickel content through regions I and II is not significant, as this metal is the major component of the Inconel alloy.



**Figure 1.** SEM images of the heat treated Inconel substrate: top view a) and cross-sectional view b). The elemental map reveals the presence of iron c), oxygen d), nickel e) and chromium f).

The GDOES elemental depth profile shown in Figure 2 provides more information about this layered structure to support the above statements. The profile reveals that oxygen presents a decreasing gradient of concentration from the surface, with a very high GDOES intensity at the outermost layer that corresponds to region I in Figure 1. Moreover, GDOES data confirm the enrichment in Fe occurring in region I but points out to a similar phenomenon also occurring to the Ni component. The subsurface corresponding to region II is almost only composed by Cr, whose intensity remains constant for a certain depth, besides oxygen. For higher sputtering times, the metallic constituents of Inconel appear with concentrations similar to their nominal values.



**Figure 2.** GDOES elemental depth profile for oxidized Inconel.

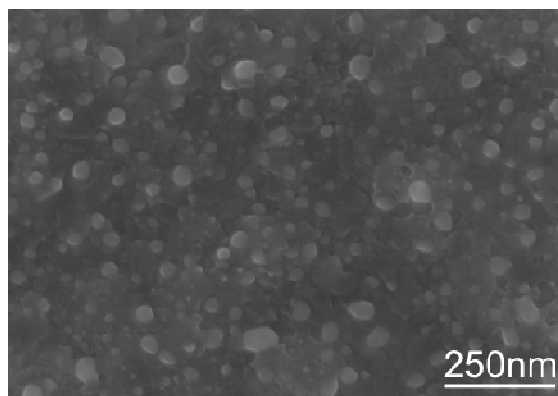
The combination of XRD data, EDS elemental mapping and GDOES (Figure S4, Supplementary Information) depth profile analysis allows to conclude that during the oxidation pretreatment Fe is preferentially segregated to the outer layer (region I) forming  $\text{Fe}_2\text{O}_3$  while Cr remains in the adjacent subsurface region II. Ni associates to Fe diffusion to the surface. Even though Inconel is an alloy where a chromium oxide ( $\text{Cr}_2\text{O}_3$ ) passivation barrier is formed upon air exposure at elevated temperatures (e.g. 850 °C) [5], the XRD pattern does not show the presence of this oxide on the outer layer. In fact, a continuous  $\text{Cr}_2\text{O}_3$  layer is formed underneath of the other oxides, uplifting them to the outer region. These observations are in agreement with recent oxidation studies on Inconel<sup>®</sup> 600 that showed that inward oxygen diffusion promoted the formation of a  $\text{Cr}_2\text{O}_3$  inner type layer, whereas Ni ions move outward [11]. Earlier studies highlighted the importance of the relative rates of diffusion of elements from the bulk alloy to explain the formation of different oxide layers, in opposition to free-energy considerations (that would favor oxidation in the order  $\text{Cr} > \text{Fe} > \text{Ni}$ ) and availability of metal (that would promote the oxidation order  $\text{Ni} > \text{Cr} > \text{Fe}$ ) [12].

### 3.2. Growth of VACNTs on Inconel substrate

It is well-known that the VACNTs growth depends on the formation of nano-sized metal catalyst particles on the substrate surface [7,13]. Hence, the granular morphology produced after heat treatment (Figure 1a) together with its iron oxide chemical nature

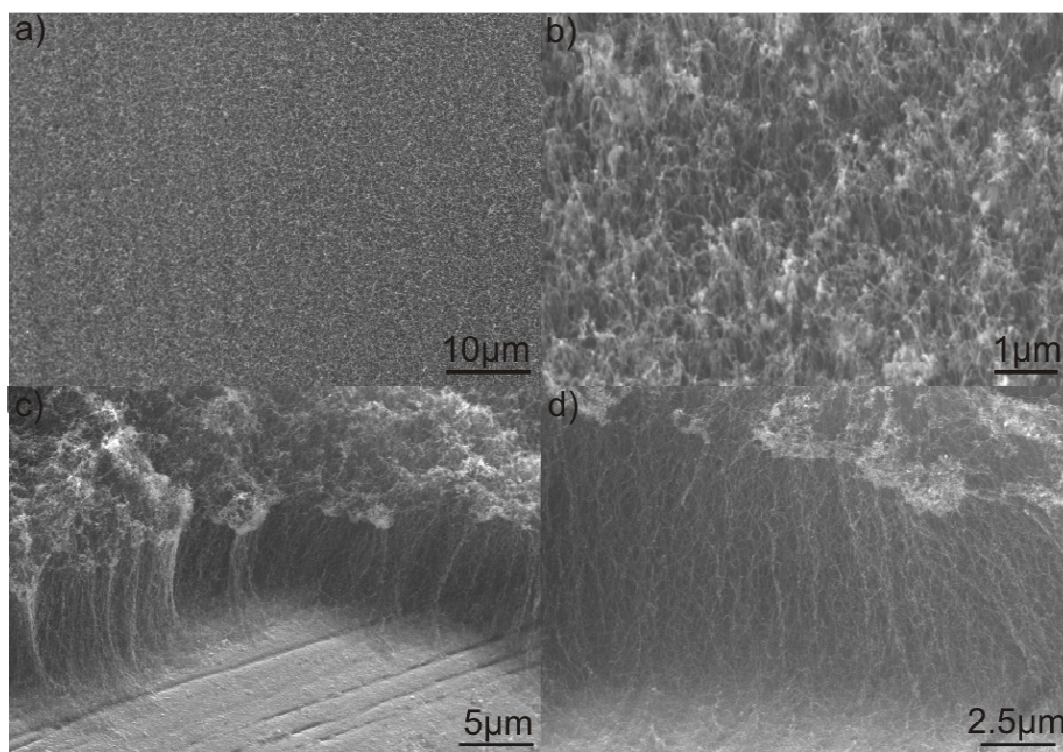


(Figures S1, 1c and 2), appears as an ideal combination for the in-situ direct growth on Inconel provided a reduction treatment is undertaken. This was the reason for the shorter annealing step (1 min) in a reductive mixture flow of  $H_2$  and Ar that resulted in the surface morphology presented in Figure 3. Longer annealing times lead to the agglomeration of the small nano-sized particles into larger ones, decreasing their catalyst activity and eventually suppress the CNTs growth. As a result, an even distribution of nano-sized particles with pseudo-spherical morphology is obtained, demonstrating that the grains were restructured to a smaller size constituting ideal catalytic active sites for the CNTs growth. In fact, they promote the adsorption and dissociation of the carbon source (i.e.,  $C_2H_2$ ) on their surfaces, and the dissolution and further precipitation of the carbon atoms, leading to the growth of a CNT [13].



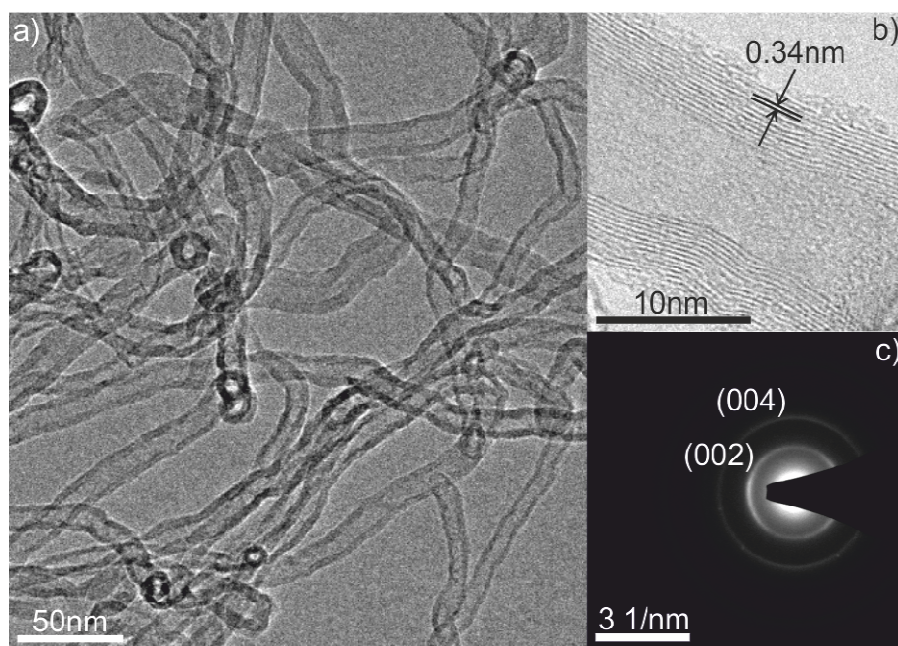
**Figure 3.** SEM image of the Inconel surface before the CNT growth step.

The high number of nucleation sites leads to a high density of CNTs grown over the substrate, as shown in Figures 4a and b. The vertical alignment with respect to the substrate is depicted from images in Figures 4c and d. This alignment results from the sufficient density of growing CNTs that causes surface crowding constraining a preferentially unidirectional growth. This means that, as CNTs begin to grow from the densely distributed nano-sized catalyst particles, it is generally accepted that van der Waals forces among CNT neighbors cause them to all grow vertically to the substrate [14]. The final height of the VACNTs after 15 min of growth was observed to be around  $18 \mu m$  by 3D optical profilometry measurement, denoting a higher growth rate than that attained by hot filament CVD, where  $10 \mu m$  in height forests were grown for 1 hour [9].



**Figure 4.** SEM images of the CNTs distribution over the substrate at different magnifications: (a) top view; (b) 45° tilted; (c and d) side views of the VACNTs.

The TEM image reported in Figure 5a depicts an overview of the CNTs taken at low magnification. The image reveals that the nanotubes are multiwalled CNTs with 14-18 nm in outer diameter. The crystallinity of the CNTs was examined by HRTEM together with SAED shown in Figure 5b and c, respectively. The characteristic 0.34 nm inter-wall spacing of the CNTs is given in Figure 6b and the ring-like pattern in SAED in Figure 5c shows the (002) and (004) rings planes of the graphitic walls.



**Figure 5.** Overview TEM and HRTEM image (a and b) and SAED ring-like pattern (c) of the CNTs.

Raman spectroscopy was employed to investigate the purity and the degree of graphitization of the grown VACNTs. As shown in Figure S5 (Supplementary Information), the Raman spectra exhibit two main bands around  $1340\text{ cm}^{-1}$  (D band) and around  $1575\text{ cm}^{-1}$  (G band) characteristics of multi-walled CNTs [15-18]. For comparison, the CNTs were also grown on Si buffered substrate, i.e., iron thin film was deposited onto  $\text{Al}_2\text{O}_3/\text{SiO}_2/\text{Si}$  substrate by physical vapour deposition. The strong G band corresponds to the stretching mode of the C-C bond in the graphitic plane and demonstrates the presence of crystalline graphitic carbon. On the other hand, the D band is indicative of defects in CNTs, i.e., carbonaceous impurities with  $sp^3$  bonding and broken  $sp^2$  side walls. The intensity ratio  $I_D/I_G$  is indicative of the degree of purity of the CNT samples [17]. The lower value of this ratio indicates less defects and amorphous carbon and thus higher level of purity. The  $I_D/I_G$  ratio estimated from the Raman studies are  $I_D/I_G = 1.00$  and  $0.91$  for the VACNTs grown onto Inconel substrate and Si buffered substrate, respectively. These results reveal a similar defects level of both of the VACNTs samples.

It is generally accepted that the CNT growth mechanism is dependent on the surface chemistry interactions between the carbon precursor and the existent metallic phases, and also on the presence of an underneath diffusion barrier [6,9]. As above reported, Fe preferably diffuses into the surface leading to the formation of  $\text{Fe}_2\text{O}_3$  that is

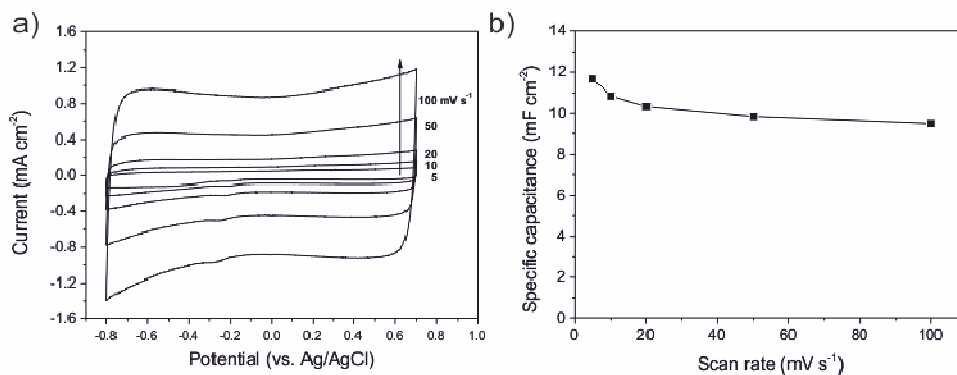
subsequently reduced to Fe in the annealing step. As matter of fact, Fe<sub>2</sub>O<sub>3</sub> nanoparticles have been intentionally used as pre-catalyst for VACNTs growth. [19,20]. For example, we already showed that a microwave-assisted synthesis of a solution of Fe(acac)<sub>3</sub> in benzyl alcohol permitted the deposition of Fe<sub>2</sub>O<sub>3</sub> nanoparticles onto a variety of substrates, which were shown to be the active catalysts, after the in-situ reduction to metallic Fe, for the VACNTs growth [21].

The Inconel surface was characterized by grazing angle XRD after the CNT growth (Figure S6, Supplementary Information) and the removal of the VACNTs. The pattern, on top of the reflections of Ni, shows low intensity Fe reflections and no Fe<sub>2</sub>O<sub>3</sub>. This demonstrates that, on the one hand Fe<sub>2</sub>O<sub>3</sub> has been reduced to metallic Fe, which was the active catalyst in the CNTs growth. On the other hand, the low intensity of the Fe reflections suggests that most of the surface iron catalysts particles are lifted up during the growth, as also in agreement with the TEM image reported in Figure S7. The presence of these particles inside of the tubes can be due to the growth process that employs the whole Inconel surface as catalyst. Chen et al. [22] suggested that stretching force causes the nano-sized catalytic particles, that are in a liquid state at the growth temperature, to elongate and finally to break into two parts, one staying at the base, while another being lifted up. It can be concluded that the CNTs grown on the Inconel follow the base growth mechanism.

No less important is the Cr<sub>2</sub>O<sub>3</sub> layer formation underneath the outer Fe<sub>2</sub>O<sub>3</sub> layer (Figures 1 and 2) that acts as a diffusion barrier and supporting layer for the formation of evenly distributed nano-sized catalytic particles [9]. Indeed, a Cr<sub>2</sub>O<sub>3</sub> oxide layer has been used by others for the stabilization of Fe on Inconel and subsequent CNT growth by vapor-phase catalyst delivery CVD method [1, 4-6].

### 3.3. Electrochemical characterization

In order to prove that the VACNTs directly grown on the metallic current collector (Inconel substrate) display good electrical properties and can be used as electrode in a variety of applications electrochemical measurements have been carried out. Figure 6a shows cyclic voltammograms (CV) of the CNTs/Inconel at different scan rates ranging from 5 to 100 mV s<sup>-1</sup> in 1 M Na<sub>2</sub>SO<sub>4</sub>, where the potential limits are restricted from -0.8 to 0.7 V in a standard three electrode cell.

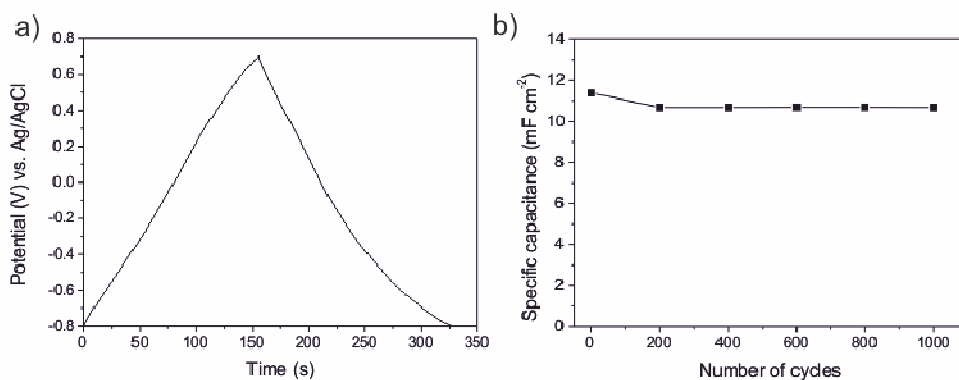


**Figure 6.** Cyclic voltammograms (a) of CNTs/Inconel electrode measured at different scan rates ranging from 5 to 100  $\text{mV s}^{-1}$  and dependence of the specific capacitance derived from the CV measurements (b).

It can be seen that all CV curves at the different scan rates are all of a rectangular-like shape. It is well known that a large-current, rectangular-type CV and symmetry in anodic and cathodic directions are the indications of ideal capacitor behavior of the electrode materials. This suggests that the VACNTs have very rapid current response on voltage reversal, small equivalent serial resistance (ESR) and low contact resistance with the substrate. The straight rectangular sides of  $I$ - $E$  responses also support this feature. As a matter of fact, a large resistance will distort the response, into a narrower loop with an oblique shape, especially at a high sweep rate [20]. The capacitance was derived from the cyclic voltammogram curves using the equation (1):

$$C_{sp} = \frac{\int I(E)dE}{2v(E_2 - E_1)} \quad (1)$$

where  $C_{sp}$  is the specific capacitance in  $\text{mF cm}^{-2}$ ,  $I(E)$  is the instantaneous current in A,  $v$  is the scan rate in  $\text{V s}^{-1}$  and  $(E_2 - E_1)$  is the potential range in V. Therefore, the average  $C_{sp}$  was obtained by integrating positive and negative current over the CV curves [19]. The overall measured capacitance for the three-electrode system was  $10.43 \text{ mF cm}^{-2}$ . Figure 6b shows the influence of scan rate on  $C_{sp}$ . It can be seen a  $C_{sp}$  of  $11.67 \text{ mF cm}^{-2}$  is obtained at low scan rate of  $5 \text{ mV s}^{-1}$  and the  $C_{sp}$  only slightly decrease with the increasing potential scan rate, indeed at a high scan rate of  $100 \text{ mV s}^{-1}$ , the VACNTs still delivery a significant  $C_{sp}$  of  $9.48 \text{ mF cm}^{-2}$ .



**Figure 7.** Galvanostatic charge-discharge curve (a) of the CNTs/Inconel electrode under a current density of  $0.5 \text{ A g}^{-1}$  and dependence of the specific capacitance on the cycle number (b).

Galvanostatic charge-discharge measurements were also applied to characterize the properties of the CNTs/Inconel electrode, where the carbon based electrode was charge-discharged under a current density of  $0.5 \text{ A g}^{-1}$ . Figure 7a shows a typical current charge-discharge (E-t) curve of the CNTs/Inconel electrode. On both curves, the E-t responses of the charge process reveal a mirror-like image of their corresponding discharge counter parts and no significant IR drop was observed. It can be concluded that the resistance is low and highly charge-discharge efficiency. The  $C_{sp}$  can be estimated according to the following equation (2):

$$C_{sp} = \frac{I\Delta t}{\Delta E} \quad (2)$$

where the  $I$  refers to discharge current in A,  $\Delta t$  represents the discharge time in s and  $\Delta E$  is the potential range in V. The calculated  $C_{sp}$  of the CNTs/Inconel electrode was  $11.37 \text{ mF cm}^{-2}$ . In order to evaluate the stability of the CNTs/Inconel electrode during the charge-discharge cycle, the values  $C_{sp}$  with respect to charge-discharge cycle number (up to 1000 cycles) were measured (Figure 7b). The  $C_{sp}$  decline slowly during the first 200 cycles but remained constant thereafter. Since the length of cycle life of a supercapacitor is a crucial parameter for its application. The calculated specific capacitances from the CV and galvanostatic charge-discharge techniques corroborate each other. These findings emphasize that the grown multi-walled CNTs are active electrode materials for storage of energy in supercapacitors by the development of a double layer capacitance.

Electrochemical impedance spectroscopy results represented by Nyquist plot (Figure S8, Supplementary Information) consist of three frequency-dependent regions. At very high frequencies (A), the CNTs electrode behaves like a pure resistance. The equivalent series resistance (ESR) obtained from the real axis intercept of the Nyquist plot is  $9.1 \Omega$  corresponding to the sum of electrolyte resistance and contact resistance between the CNTs and the current collector (Inconel) [23]. At low frequency (region B), the imaginary part of the impedance sharply increases and the plot tends to a vertical line characteristic of a purely capacitive behavior. This vertical line along the imaginary axle indicates good capacitance behavior and lower ion diffusion resistance of the CNTs/electrolyte. The influence of the matt-like structure and thickness of the CNTs electrode on the access of the electrolyte to the entire available surface, can be observed in the medium frequency (C). It can be concluded that the as-prepared CNTs provide a large accessible area for the electrolyte diffusion and therefore the formation of the double layer capacitance. Moreover, these findings imply that the VACNTs exhibit low internal resistance and good dynamic charge-discharge response characteristics

#### 4. Conclusions

Here we have reported for the first time a simple procedure to directly grow VACNTs on an Inconel substrate by TCVD, without the addition of an external catalyst. The Inconel substrate surface acts both as catalyst and as support for the CNTs growth. The results demonstrate that the growth of VACNTs is directly related to the uniformly dispersed and densely packed nano-sized catalytic particles formed by a simple annealing of the Inconel alloy in air. This work paves the way for the growth of CNTs directly on metallic substrates which resolves the problem of adhesion of nanotubes on metallic substrates and fulfills the requirement for electrochemical applications. Further evidence in support of this statement was obtained from the cyclic voltammetry and electrochemical impedance spectroscopy. Finally, our growth process may lead to new opportunities in electrode preparation for various applications in sensors and energy storage and conversion.

**Acknowledgments**

R.M. Silva is very grateful to FCT for the grant SFRH/BD/90844/2012. The RNME - Pole University of Aveiro, FCT Project REDE/1509/RME/2005 is acknowledged. The authors would like to acknowledge A. J. S. Fernandes and M. C. Ferro from University of Aveiro for the Raman spectra and TEM studies, respectively. This work was developed in the scope of the project CICECO-Aveiro Institute of Materials (Ref. FCT UID /CTM /50011/2013), financed by national funds through the FCT/MEC and co-financed by FEDER under the PT2020 Partnership Agreement.



**References**

- [1] S. Talapatra, S. Kar, S. K. Pal, R. Vajtai, L. Ci, P. Victor, M. M. Shaijumon, S. Kaur, O. Nalamasu, P. M. Ajayan, *Nat. Nanotechnol.*, 2006, **1**, 112-116.
- [2] L. Gao, A. Peng, Z. Y. Wang, H. Zhang, Z. Shi, Z. Gu, G. Cao, B. Ding, *Solid State Comm.*, 2008, **146**, 380-383.
- [3] H. Zhang, G. Cao, Y. Yang, *Energy Environ. Sci.*, 2009, **2**, 932-943.
- [4] S. K. Pal, S. Talapatra, S. Kar, L. Ci, R. Vajtai, T. Borca-Tascicu, L. S. Schadler, P.M. Ajayan, *Nanotechnology*, 2008, **19**, 045610-045615.
- [5] J. B. Bult, W. G. Sawyer, P. M. Ajayan, L. S. Schadler, *Nanotechnology*, 2009, **20**, 085302-085309.
- [6] S. K. Pal, S. Kar, S. Lastella, A. Kumar, R. Vajtai, S. Talapatra, T. Borca-Tascicu, P. M. Ajayan, *Carbon*, 2010, **48**, 844-853.
- [7] D. Mata, R. M. Silva, A. J. S. Fernandes, F. J. Oliveira, P. M. F. J. Costa, R. F. Silva, *Carbon*, 2012, **50**, 3585-3606.
- [8] S. Sridhar, L. Ge, C. S. Tiwary, A. C. Hart, S. Ozden, K. Kalaga, S. Lei, S. V. Sridhar, R. K. Sinha, H. Harsh, K. Kordas, P. M. Ajayan, R. Vajtai, *ACS Appl. Mater. Interfaces*, 2014, **6**, 1986-1991.
- [9] W. Yi, Q. Yang, *Diamond Relat. Mater.*, 2010, **19**, 870-874.
- [10] W. Yi, Q. Yang, *Appl. Phys. A*, 2010, **98**, 659-669.
- [11] J. Xiao, N. Prud'homme, N. Li, V. Ji, *Appl. Surf. Sci.*, 2013, **284**, 446-452.
- [12] J. M. Francis, J. A. Jutson, J. H. Buddery, *J. Mat. Sci.*, 1967, **2**, 78-87.
- [13] H. Ma, L. Pan, Y. Nakayama, *Carbon*, 2011, **49**, 854-861.
- [14] Y. Lan, Y. Wang, Z. F. Ren, *Adv. Phys.*, 2011, **60**, 553-678.
- [15] F. Tuinstra, J. L. Koenig, *J. Chem. Phys.*, 1970, **53**, 1126-1130.
- [16] A. M. Rao, A. Jorio, M. A. Pimenta, M. S. S. Dantas, R. Satio, G. Dresselhaus, M. S. Dresselhaus, *Phys. Rev. Lett.*, 2000, **84**, 1820-1823.
- [17] M. S. Dresselhaus, G. Dresselhaus, R. Satio, A. Jorio, *Phys. Reports*, 2005, **409**, 47-99.
- [18] R. A. DiLeo, B. J. Landi, R. P. Raffaele, *J. Appl. Phys.*, 2007, **101**, 064307-064312.
- [19] M. Felisberto, L. Sacco, I. Mondragon, G. H. Rubiolo, R. J. Candal, S. Goynes, *Mater. Lett.* 2010, **64**, 2188-2190.
- [20] K. Yamada, A. Kaneko, H. Kato, Y. Homma, *Mater. Express*, 2012, **2**, 257-260.

- [21] R. M. Silva, A. Pucci, C. Marichy, D. Mata, M. C. Ferro, R. F. Silva, N. Pinna, *Cryst. Eng. Comm.*, 2012, **14**, 48-52.
- [22] X. Chen, R. Wang, J. Xu, D. Yu, *Micron*, 2004, **35**, 455-460
- [23] B. E. Conway, *Electrochemical Supercapacitors: Scientific Fundamentals and Technological Applications*, Plenum, 1999, New York.

## Table of contents

Vertically aligned carbon nanotubes grown directly onto a metallic substrate without external catalyst can be used as the active electrode material and the current collector, respectively.

