

# Soft Matter

Accepted Manuscript



This is an *Accepted Manuscript*, which has been through the Royal Society of Chemistry peer review process and has been accepted for publication.

*Accepted Manuscripts* are published online shortly after acceptance, before technical editing, formatting and proof reading. Using this free service, authors can make their results available to the community, in citable form, before we publish the edited article. We will replace this *Accepted Manuscript* with the edited and formatted *Advance Article* as soon as it is available.

You can find more information about *Accepted Manuscripts* in the [Information for Authors](#).

Please note that technical editing may introduce minor changes to the text and/or graphics, which may alter content. The journal's standard [Terms & Conditions](#) and the [Ethical guidelines](#) still apply. In no event shall the Royal Society of Chemistry be held responsible for any errors or omissions in this *Accepted Manuscript* or any consequences arising from the use of any information it contains.

Cite this: DOI: 10.1039/xxxxxxxxxx

## Nonlinear electro-osmosis of dilute non-adsorbing polymer solutions with low ionic strength

Yuki Uematsu<sup>\*a</sup>Received Date  
Accepted Date

DOI: 10.1039/xxxxxxxxxx

www.rsc.org/journalname

Nonlinear electro-osmotic behaviour of dilute non-adsorbing polymer solutions with low salinity is investigated using Brownian dynamics simulations and a kinetic theory. In the Brownian simulations, the hydrodynamic interaction between the polymers and a no-slip wall is considered using the Rotne-Prager approximation of the Blake tensor. In a plug flow under a sufficiently strong applied electric field, the polymer migrates toward the bulk, forming a depletion layer thicker than the equilibrium one. Consequently, the electro-osmotic mobility increases nonlinearly with increasing electric field and becomes saturated. This nonlinear mobility does not depend qualitatively on the details of the rheological properties of the polymer solution. Analytical calculation using the kinetic theory for the same system quantitatively reproduces the results of the Brownian dynamics simulation well.

### 1 Introduction

Electro-osmosis is observed widely in many systems such as colloids, porous materials, and biomembranes. It characterises the properties of interfaces between solids and electrolyte solutions.<sup>1,2</sup> Interests in applications of electro-osmosis has been growing recently. For instance, it is used to pump fluids in microfluidic devices, as it is more easily implemented than pressure-driven flow.<sup>3</sup> Application to an electrical power conversion in chemical engineering is also very fascinating.<sup>4,5</sup> When the electrokinetic properties of a surface are characterised by a zeta potential, the Smoluchowski equation is often employed in conjunction with measurements of the electro-osmotic or electrophoretic mobilities. However, the validity of this equation should be considered more seriously. It is derived from the Poisson-Boltzmann equation and Newton's constitutive equation for viscous fluids. The zeta potential is defined as the electrostatic potential at the plane where a no-slip boundary condition is assumed. When these equations cannot be validated, the Smoluchowski equation is also questionable. The Poisson-Boltzmann equation, the simple hydrodynamic equations, or both sometimes do not work well for a strong coupling double layer,<sup>6</sup> inhomogeneity of viscosity and dielectric constant near the interface,<sup>7,8</sup> and non-Newtonian fluids<sup>9–12</sup>, for example.

To control the electrokinetic properties of charged capillaries, the structures of liquid interfaces in contact with charged surfaces are modified by grafting or adding polymers.<sup>13</sup> In capillary electrophoresis, for example, the electro-osmotic flow is reduced

by grafted polymers on the interfaces. Several studies of surfaces with end-grafted charged and uncharged polymers have also been reported.<sup>14–19</sup> Under a weak applied electric field, the grafted polymer remains in the equilibrium configuration, and the resultant electro-osmotic velocity behaves linearly with respect to the electric field. To measure the mobility of such a surface, the hydrodynamic screening and anomalous charge distributions due to the grafted polymers are important.<sup>14–19</sup> When a sufficiently large electric field is applied, the polymers are deformed by the flow and electric field; thus, the electro-osmotic velocity becomes nonlinear.<sup>16</sup> Note that the end-grafted polymers cannot migrate toward the bulk, as one of the ends is fixed on the surfaces.

When we add polymers to solutions, a depletion or adsorption layer is often formed near a solid wall, as well as diffusive layers of ions in equilibrium states. The interaction between the polymers and the wall determines whether the polymers are depleted from or adhere to the surfaces. The thickness of the depletion or adsorption layer is of the same order as the gyration length of the polymers. When polymers adhere to the wall, the viscosity near the wall becomes large, so the electro-osmotic mobility is strongly suppressed.<sup>20</sup> Moreover, it is known that an adsorption layer of charged polymers can change the sign of the mobility.<sup>7,21–24</sup> The curvature of the surface also modulates the surface charge density and even increases the mobility beyond the suppression caused by the viscosity enhancement.<sup>20</sup>

Electro-osmosis of a non-adsorbing polymer solution has been analysed in terms of two length scales: the equilibrium depletion length  $\delta_0$  and the Debye length  $\lambda$ .<sup>7,25</sup> In the depletion layer, the viscosity is estimated approximately as that of the pure solvent, and it is smaller than the solution viscosity in the bulk. When

<sup>a</sup> Department of Physics, Kyoto University, Kyoto 606-8502, Japan. E-mail: y\_uematsu@scphys.kyoto-u.ac.jp

the Debye length is smaller than the depletion length, the electro-osmotic mobility is larger than that estimated from the bulk value of the viscosity. Typically, for 10 mM electrolyte solutions, one has  $\lambda \approx 3$  nm and  $\delta_0 \approx 100$  nm. In such a case,<sup>26–28</sup> an electro-osmotic flow with a high shear rate is localised at a distance  $\lambda$  from the wall. Thus, the electro-osmotic flow profile and resultant electro-osmotic mobility are almost independent of the polymers. Such behaviours are experimentally observed in solutions of carboxymethyl cellulose with urea.<sup>27</sup> On the other hand, in the solutions of small polymers with low salinity (typically for 0.1 mM electrolyte solutions,  $\lambda \approx 30$  nm and  $\delta_0 \approx 5$  nm), the electro-osmotic mobility is suppressed by the polymeric stress.<sup>25</sup>

When a sufficiently strong electric field is applied, the electro-osmosis of a polymer solution shows nonlinear behaviours.<sup>27,29</sup> These nonlinearities are theoretically analysed by models of uniform non-Newtonian shear-thinning fluids.<sup>9–12</sup> Assuming that polymers remain in the interfacial layers and the viscosity depends on the local shear rate, as in power-law fluids, their phenomenological parameters differ from those in the bulk, as the concentration in the interfacial layers differs from the bulk concentration.<sup>27</sup> Thus, the understanding of nonlinear electro-osmosis remains phenomenological. Furthermore, when shear flow is applied to polymer solutions near a wall, it is experimentally and theoretically confirmed that cross-stream migration is induced toward the bulk.<sup>30–32</sup> The concentration profiles of the polymer near the wall have been calculated, and the depletion length dynamically grows tenfold larger than the gyration radius.<sup>31</sup> However, these hydrodynamic effects in the electrokinetics have not been studied to date, to the best of our knowledge.

In this context, this paper discusses another origin of nonlinearity, which is induced by hydrodynamic interaction between the polymer and the wall, considering mainly situations where  $\delta_0 \ll \lambda$ . For this purpose, this paper is organised as follows. Section 2 presents a toy model of nonlinear electro-osmosis of dilute polymer solutions. Section 3 describes the Brownian dynamics simulation, and section 4 presents the results of the simulation. In section 5, we discuss an analytical approach to nonlinear electro-osmosis by using the kinetic theory of cross-stream migration.<sup>31</sup> Section 6 outlines the main conclusions.

## 2 Toy Model

First, we propose a toy model for electro-osmosis of polymer solutions. A dilute solution of non-adsorbing polymers is considered. The viscosity of the solution is given by

$$\eta = \eta_0(1 + \eta_{sp}), \quad (1)$$

where  $\eta_0$  is the viscosity of the pure solvent, and  $\eta_{sp}$  is the specific viscosity of the solution. The gyration length of the polymers is defined as  $\delta_0$ , which is of the same order as the equilibrium depletion length. It is assumed that the polymers have  $\delta_0 \approx 100$  nm. Ions are also dissolved in the solution with the Debye length  $\lambda$ . When well-deionised water is considered, the Debye length is on the order of  $\lambda \approx 10^3$  nm, although such salt-free water is rarely realised owing to spontaneous dissolution of carbon dioxides. The interfacial structure near a charged surface is characterised by  $\lambda$

and  $\delta_0$ . When an external electric field is applied, a shear flow is imposed locally within a distance  $\lambda$  from the wall, and the resultant shear rate is

$$\dot{\gamma} \approx \frac{\mu_0 E}{\lambda}, \quad (2)$$

where  $\mu_0$  is the electro-osmotic mobility of the pure solvent and is typically estimated as  $\mu_0 \approx 10^{-8} \text{ m}^2/(\text{V}\cdot\text{s})$ . According to studies of cross-stream migration in uniform shear flow<sup>31</sup>, the depletion layer thickness depends on the shear rate,

$$\delta \approx \delta_0(\tau\dot{\gamma})^2, \quad (3)$$

where  $\tau$  is the characteristic relaxation time of the polymers,

$$\tau \approx \frac{\eta_0 \delta_0^3}{k_B T}, \quad (4)$$

where  $k_B T$  is the thermal energy, and is typically  $10^{-4}$  s at room temperature. Using eqs.(2) and (3), the depletion length in the presence of the applied electric field  $E$  can be expressed as

$$\delta \approx \begin{cases} \delta_0 & \text{for } E < E_0, \\ \left(\frac{E}{E_0}\right)^2 \delta_0 & \text{for } E_0 \leq E \leq E_1, \\ \lambda & \text{for } E_1 < E, \end{cases} \quad (5)$$

where  $E_0 = \lambda/\tau\mu_0$ , and  $E_1 = E_0\sqrt{\lambda/\delta_0}$ . Here, for simplicity, we assume that the depletion length does not exceed the Debye length. The effective viscosity in the double layer is given by

$$\eta_{\text{eff}} \approx \eta_0 \left[ 1 + \eta_{sp} \left( 1 - \frac{\delta}{\lambda} \right) \right], \quad (6)$$

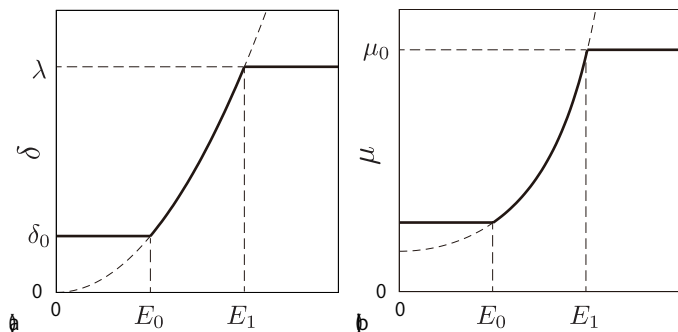
and the nonlinear mobility can be estimated as  $\mu \approx \mu_0(\eta_0/\eta_{\text{eff}})$ . Therefore, the mobility is obtained as

$$\mu \approx \begin{cases} \frac{\mu_0}{1 + \eta_{sp}(1 - (\delta_0/\lambda))} & \text{for } E < E_0, \\ \frac{\mu_0}{1 + \eta_{sp}(1 - (E/E_1)^2)} & \text{for } E_0 \leq E \leq E_1, \\ \mu_0 & \text{for } E_1 < E. \end{cases} \quad (7)$$

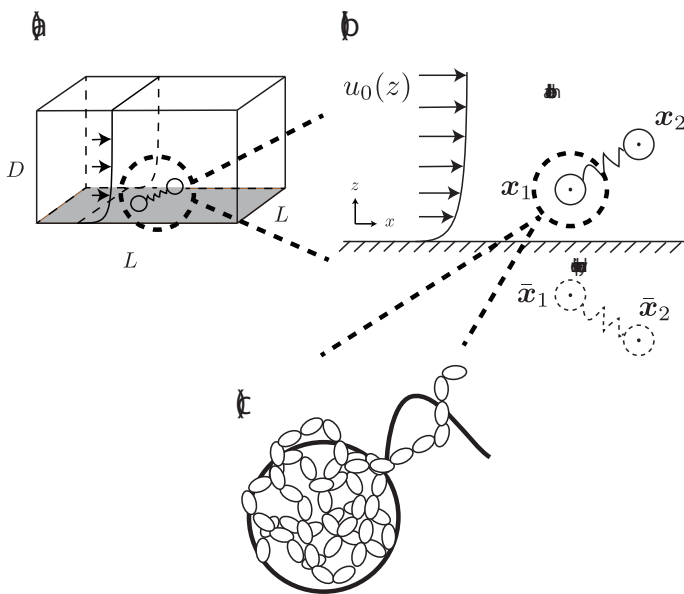
Fig. 1 (a) schematically shows the thickness of the depletion layer as a function of the electric field strength. Fig. 1 (b) shows the nonlinear electro-osmotic mobility. The mobility increases and is saturated with increasing electric field. The threshold electric field  $E_0$  is typically  $10^3$  V/m, which is experimentally accessible.

## 3 Model for simulation

In this section, our method of Brownian dynamics simulation is described. As shown in Fig. 2(a), a dumbbell is simulated in an electrolyte solution with a no-slip boundary at  $z = 0$ . The dumbbell behaves like a dilute solution. The solvent is described as a continuum fluid with the viscosity  $\eta_0$  and fills the upper half of the space ( $z > 0$ ). Electrolytes are also treated implicitly with the Debye length  $\lambda = \kappa^{-1}$ . The dumbbell has two beads whose hydro-



**Fig. 1** (a) Depletion length as a function of the applied electric field. (b) Electro-osmotic mobility as a function of the applied electric field.



**Fig. 2** (a) Dumbbell in the simulated box with  $L \times L \times D$ . Periodic boundary condition is imposed at  $x$ - $y$  plane. (b) An  $x$ - $z$  projection of the dumbbell in the electro-osmotic flow. (c) Enlarged illustration of the bead in the dumbbell. It is composed of many monomeric units of the polymers.

dynamic radii are  $a$ , and each bead consists of many monomeric units of the polymer [see Fig. 2(c)]. The positions of the beads are represented by  $\mathbf{x}_1$  and  $\mathbf{x}_2$  [see Fig. 2(b)]. Then we solve the overdamped Langevin equations<sup>33</sup> given by

$$\frac{dx_{n\alpha}}{dt} = u_0(z_n)\delta_{\alpha x} + \sum_{m,\beta} \left( G_{\alpha\beta}^{nm} F_{m\beta} + k_B T \nabla_{m\beta} G_{\alpha\beta}^{nm} \right) + \xi_{n\alpha},$$

$$\text{for } n = 1, 2, \alpha = x, y, z, \quad (8)$$

where  $X_{n\alpha}$  is the  $\alpha$  component of the vector  $\mathbf{X}_n$ . Further,  $u_0(z)$  is the external plug flow,  $\nabla_{n\alpha} = \partial/\partial x_{n\alpha}$ ,  $\mathbf{G}$  is the mobility tensor,  $\mathbf{F}_n = -\nabla_n U$  is the force exerted on the  $n$ th bead, and  $U$  is the interaction energy given as a function of  $\mathbf{x}_n$ .  $\xi_n$  is the thermal noise which satisfies the fluctuation-dissipation relation as

$$\langle \xi_{n\alpha}(t) \xi_{m\beta}(t') \rangle = 2k_B T G_{\alpha\beta}^{nm} \delta(t - t'). \quad (9)$$

To include the effects of the no-slip boundary, the Rotne-Prager approximation for the Blake tensor<sup>34</sup> is used as the mobility tensor for distinct particles ( $n \neq m$ ),<sup>35,36</sup> although it is valid only for particles separated by a large distance. In this study, we neglect lubrication corrections for nearby particles.<sup>37</sup> The Blake tensor for the velocity at  $\mathbf{x}_2$  induced by a point force at  $\mathbf{x}_1$  with the no-slip boundary at  $z = 0$  is given by the Oseen tensor and the coupling fluid-wall tensor as<sup>34</sup>

$$G_{\alpha\beta}^B(\mathbf{x}_2, \mathbf{x}_1) = S_{\alpha\beta}(\mathbf{q}) + G_{\alpha\beta}^W(\mathbf{x}_2, \mathbf{x}_1), \quad (10)$$

where  $\mathbf{q} = \mathbf{x}_2 - \mathbf{x}_1$ ,  $\mathbf{R} = \mathbf{x}_2 - \bar{\mathbf{x}}_1$ , and  $\bar{\mathbf{x}}_1$  is the mirror image of  $\mathbf{x}_1$  with respect to the plane  $z = 0$  [see Fig. 2(b)]. The Oseen tensor is given by

$$S_{\alpha\beta}(\mathbf{q}) = \frac{1}{8\pi\eta_0} \left( \frac{\delta_{\alpha\beta}}{q} + \frac{q_\alpha q_\beta}{q^3} \right), \quad (11)$$

where  $q$  is the magnitude of  $\mathbf{q}$ . The second term in eq. (10) is

$$G_{\alpha\beta}^W(\mathbf{x}_2, \mathbf{x}_1) = -S_{\alpha\beta}(\mathbf{R}) + z_1^2 (1 - 2\delta_{\beta z}) \nabla_R^2 S_{\alpha\beta}(\mathbf{R}) - 2z_1 (1 - 2\delta_{\beta z}) S_{\alpha z, \beta}(\mathbf{R}), \quad (12)$$

where

$$S_{\alpha\beta, \gamma}(\mathbf{q}) = \nabla_{q\gamma} S_{\alpha\beta}(\mathbf{q}), \quad (13)$$

and  $\nabla_{q\gamma} = \partial/\partial q_\gamma$ . The Rotne-Prager approximation of the Blake tensor is given by<sup>6,35-38</sup>

$$G_{\alpha\beta}^{\text{RPB}}(\mathbf{x}_2, \mathbf{x}_1) = \begin{cases} \left( 1 + \frac{a^2}{6} \nabla_1^2 + \frac{a^2}{6} \nabla_2^2 \right) G_{\alpha\beta}^B(\mathbf{x}_2, \mathbf{x}_1) + \mathcal{O}(a^4) & \text{for } q > 2a, \\ \frac{1}{6\pi\eta_0 a} \left[ \delta_{\alpha\beta} - \frac{9q}{32a} \left( \delta_{\alpha\beta} - \frac{q_\alpha q_\beta}{3q^2} \right) \right] + \left( 1 + \frac{a^2}{6} \nabla_1^2 + \frac{a^2}{6} \nabla_2^2 \right) G_{\alpha\beta}^W(\mathbf{x}_2, \mathbf{x}_1) + \mathcal{O}(a^4) & \text{for } q \leq 2a. \end{cases} \quad (14)$$

The mobility tensor for the self part is given by<sup>6,35-38</sup>

$$G_{\alpha\beta}^{\text{self}}(z) = \lim_{\mathbf{x} \rightarrow \mathbf{x}_1} G_{\alpha\beta}^{\text{RPB}}(\mathbf{x}, \mathbf{x}_1) = \begin{pmatrix} \mu_{\parallel}(z) & 0 & 0 \\ 0 & \mu_{\parallel}(z) & 0 \\ 0 & 0 & \mu_{\perp}(z) \end{pmatrix}, \quad (15)$$

where

$$\mu_{\parallel}(z) = \frac{1}{6\pi\eta_0 a} \left[ 1 - \frac{9a}{16z} + \frac{1}{8} \left( \frac{a}{z} \right)^3 \right] + \mathcal{O}(a^4), \quad (16)$$

$$\mu_{\perp}(z) = \frac{1}{6\pi\eta_0 a} \left[ 1 - \frac{9a}{8z} + \frac{1}{2} \left( \frac{a}{z} \right)^3 \right] + \mathcal{O}(a^4). \quad (17)$$

Finally we obtain the mobility tensor as

$$G_{\alpha\beta}^{nm} = \delta_{nm} G_{\alpha\beta}^{\text{self}}(z_n) + (1 - \delta_{nm}) G_{\alpha\beta}^{\text{RPB}}(\mathbf{x}_n, \mathbf{x}_m). \quad (18)$$

The non-uniform mobility term in eq. (8) can be simplified within the Rotne-Prager approximation of the Blake tensor because the following relation holds:

$$\sum_{\beta=x,y,z} \nabla_{m\beta} G_{\alpha\beta}^{\text{RPB}}(\mathbf{x}_n, \mathbf{x}_m) = 0. \quad (19)$$

Thus, the non-uniform mobility term is rewritten as

$$\sum_{m,\beta} \nabla_{m\beta} G_{\alpha\beta}^{\text{nm}} = \delta_{\alpha z} \nabla_{nz} \mu_{\perp}(z_n). \quad (20)$$

The interaction energy includes the spring and bead-wall interaction given by

$$U = U^s(q) + \sum_{n=1,2} U^w(z_n), \quad (21)$$

where  $U^s$  is the spring energy,

$$U^s(q) = \begin{cases} \frac{H}{2} q^2, & \text{Hookian dumbbells,} \\ -\frac{H}{2} q_0^2 \ln \left[ 1 - \left( \frac{q}{q_0} \right)^2 \right], & \text{FENE dumbbells,} \end{cases} \quad (22)$$

where a FENE dumbbell is a finitely extensible nonlinear elastic dumbbell, and the parameter  $b = Hq_0^2/k_B T$  is defined for convenience.  $U^w$  is the bead-wall interaction,<sup>39</sup> which is purely repulsive:

$$U^w(z) = \begin{cases} w \left[ \frac{2}{5} \left( \frac{a}{z} \right)^{10} - \left( \frac{a}{z} \right)^4 + \frac{3}{5} \right] & \text{for } z \leq a, \\ 0 & \text{for } z > a. \end{cases} \quad (23)$$

Eq. (8) is solved numerically. A reflection boundary condition is set at  $z = D$ . When the centre of the dumbbell crosses the boundary, the  $z$  coordinates of each bead are transformed from  $z$  to  $2D - z$ . In the lateral directions, periodic boundary conditions are imposed. The size of the lateral directions is  $L \times L$ .

## 4 Results of simulation

The concentration and velocity profiles are calculated as

$$c(z) = \frac{1}{L^2} \left\langle \delta \left( z - \frac{z_1 + z_2}{2} \right) \right\rangle, \quad (24)$$

and

$$\delta u(z) = \frac{1}{\eta_0 L^2} \left\langle \sum_{n=1,2} \min(z, z_n) F_{nx} \right\rangle, \quad (25)$$

where  $\delta(z)$  is the delta function,  $\delta u(z) = u(z) - u_0(z)$  is the velocity increment due to the polymeric stress, and  $\langle \dots \rangle$  is the statistical average in the steady state. Eq. (25) is derived in Appendix A.

For a surface with a small zeta potential compared to  $k_B T/e$ , where  $e$  is the elementary charge, the imposed electro-osmotic flow  $u_0(z)$  is given by

$$u_0(z) = \mu_0 E (1 - e^{-\kappa z}), \quad (26)$$

where  $\mu_0$  is the electro-osmotic mobility in the pure solvent, and  $E$  is the applied electric field.<sup>2</sup> Eq. (8) is rewritten in a dimen-

**Table 1** Simulation parameters.  $N_t$  is the number of total steps,  $N_i$  is the number of interval steps for observation,  $N_m$  is the number of sampling for each parameter set, and  $\Delta\tau$  is the time increment.

	Hookian	FENE $b = 600$	FENE $b = 50$
$N_t$	$5 \times 10^{10}$	$5 \times 10^{10}$	$25 \times 10^{10}$
$N_i$	$5 \times 10^3$	$5 \times 10^3$	$25 \times 10^3$
$N_m$	3	3	5
$\Delta\tau$	0.01	0.0025	0.0001

sionless form with the length scale  $\delta_0 = \sqrt{k_B T/H}$  and time scale  $\tau = 6\pi\eta_0 a/4H$ . Different types of dumbbells are simulated using the parameters listed in Table 1. Note that the simulated systems are treated as dilute systems, and the linearity with respect to the bulk polymer concentration is preserved. After sample averaging, we obtain the concentration at the upper boundary  $c(D)$ , which deviates slightly from  $(L^2 D)^{-1}$  because of the inhomogeneity near the surface. Hereafter, we define the normalised concentration as,

$$C(z) = \frac{c(z)}{c(D)}. \quad (27)$$

The velocity increment  $\delta u(z)$ , as well as the concentration profile, is linear with respect to  $c(D)$ . For convenience, we set a characteristic concentration  $c_b = 0.1\delta_0^{-3}$ , and the nonlinear electro-osmotic mobility is defined as

$$\mu(E) = \mu_0 + \frac{c_b}{c(D)} \frac{\delta u(D)}{E}. \quad (28)$$

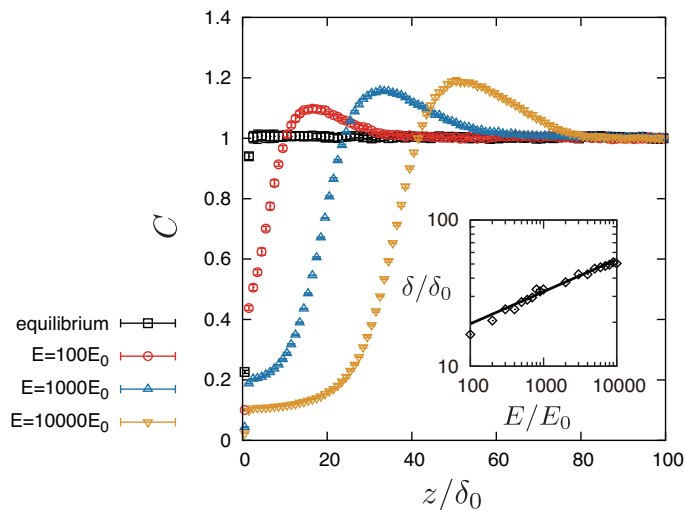
The top boundary is placed at  $D = 100\delta_0$ , the lateral size is set to  $L = 1000\delta_0$ , and the Debye length is set to  $\lambda = \kappa^{-1} = 10\delta_0$ . We also set  $w = 3k_B T$  and define a hydrodynamic parameter  $h^*$  as<sup>31</sup>

$$h^* = \frac{a}{\sqrt{\pi}\delta_0} = 0.25. \quad (29)$$

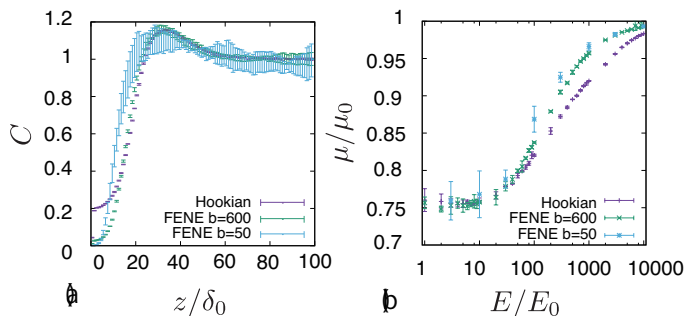
Fig. 3 shows the steady-state profiles of the Hookian dumbbell concentration as functions of the distance from the wall. In the equilibrium state of  $E = 0$ , the profile shows a depletion layer whose width is of the same order as the gyration length  $\delta_0$ . When the applied electric field is increased further, the depletion layer becomes larger than the equilibrium one, and a peak is formed. The inset in Fig. 3 shows the depletion length as a function of the applied field. The depletion length is defined by the position of the concentration peak. It shows power-law behaviour with an exponent of 0.22, which is much smaller than that of 2.0 for a uniform shear flow.<sup>31</sup> The value of the concentration at the peak also increases as the electric field grows.

The results given above are for the Hookian dumbbell which is infinitely extensible with the shear deformation. To consider more realistic polymers, the finitely extensible nonlinear elastic (FENE) dumbbell is simulated. Fig. 4 (a) shows the concentration profiles at  $E = 1000E_0$ . Interestingly, one-peak behaviour is also observed in the FENE dumbbells. For the Hookian dumbbell, the concentration near the surface remains finite. On the other hand, for the FENE dumbbells, the concentrations near the surface are negligibly small. Fig. 4 (b) plots the electro-osmotic





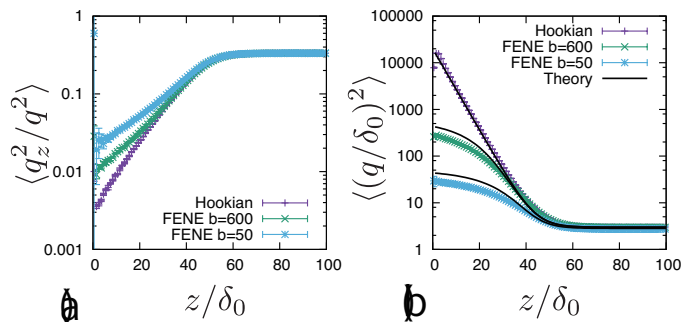
**Fig. 3** Concentration profiles of Hookian dumbbells under various applied electric fields. Inset shows the depletion length as a function of the applied field. The points are obtained by the Brownian dynamics simulation, and the line is fitted by  $\delta/\delta_0 = A(E/E_0)^B$ , where  $A = 7.08$ , and  $B = 0.22$ .



**Fig. 4** (a) Concentration profiles of the polymers at  $E = 1000E_0$  in different types of dumbbells. (b) Nonlinear electro-osmotic mobility with respect to  $E$ .

mobilities with respect to the applied electric field. The resultant electro-osmosis clearly grows nonlinearly with respect to the applied electric field. When the applied field becomes stronger, the mobility increases and is saturated, similar to that in the toy model. The two types of the dumbbells have different rheological properties in the bulk,<sup>40–42</sup> so this nonlinearity is not due to the rheological properties of the dumbbells. On the other hand, the mobility is almost constant for  $E \lesssim 10E_0$ , and this threshold of the linearity is larger than  $E_0$ , which is predicted by the toy model. Likewise, saturation is observed when  $E \approx 10^4 E_0$ , which is larger than  $E_1$ .

To clarify the difference in the profiles near the surface,  $\langle q^2 \rangle$  and  $\langle q_z^2/q^2 \rangle$  are plotted with respect to the distance from the surface. Fig. 5 (a) shows the profiles of  $\langle q_z^2/q^2 \rangle$ . In the bulk, they approach  $1/3$ , which means that the dumbbells are distributed isotropically. Near the surface, the polymers are inclined by the shear flow. The Hookian dumbbell has the largest angle between the  $z$  axis and the dumbbell direction. Fig. 5 (b) plots the profiles of  $\langle q^2 \rangle$ . In the bulk, they approach  $3\delta_0$ , which is their equilibrium value. Near the surface, they become larger because the polymers



**Fig. 5** (a) Profiles of  $\langle q_z^2/q^2 \rangle$  at  $E = 1000E_0$  in different types of the dumbbells. (b) Profiles of  $\langle (q/\delta_0)^2 \rangle$  at  $E = 1000E_0$  in different types of the dumbbells. Curved lines are calculated using eqs. (62) and (71).

are elongated by the shear flow. For the FENE dumbbells, saturation of the dumbbell length is observed. These behaviours differ greatly from the minor differences in the concentration profiles.

## 5 Kinetic theory

In this section, a kinetic theory for a dumbbell is developed on the basis of the Ma-Graham theory<sup>31</sup>. The probability function  $\Psi(\mathbf{x}_1, \mathbf{x}_2, t)$  obeys the continuity equation

$$\frac{\partial \Psi}{\partial t} = -\nabla_1 \cdot (\dot{\mathbf{x}}_1 \Psi) - \nabla_2 \cdot (\dot{\mathbf{x}}_2 \Psi), \quad (30)$$

where  $\dot{\mathbf{x}}_n$  is the flux velocity being given by<sup>43</sup>

$$\dot{x}_{n\alpha} = u_0(z_n)\delta_{x\alpha} - \sum_{m,\beta} G_{\alpha\beta}^{nm} \nabla_{m\beta} (U + k_B T \ln \Psi). \quad (31)$$

In the kinetic model, the beads are treated as point-like particles. Thus, the mobility tensor is obtained by using  $\mathbf{G}^B$  instead of  $\mathbf{G}^{RPB}$  for both the self and distinct parts. The continuity equation can be rewritten using  $\mathbf{q}$  and  $\mathbf{r}$  as

$$\frac{\partial \Psi}{\partial t} = -\nabla_r \cdot (\dot{\mathbf{r}} \Psi) - \nabla_q \cdot (\dot{\mathbf{q}} \Psi), \quad (32)$$

where  $\mathbf{r} = (\mathbf{x}_1 + \mathbf{x}_2)/2$  is the centre of the mass of the dumbbell. We also define  $\nabla_1$  and  $\nabla_2$  as

$$\nabla_1 = \frac{1}{2} \nabla_r - \nabla_q, \quad (33)$$

$$\nabla_2 = \frac{1}{2} \nabla_r + \nabla_q. \quad (34)$$

Then, the probability function is also regarded as a function of  $\mathbf{r}$  and  $\mathbf{q}$ . Here we neglect the interaction between the wall and the beads. The flux velocities for  $\mathbf{r}$  and  $\mathbf{q}$  are obtained as

$$\begin{aligned} \dot{r}_\alpha &= \frac{1}{2} [u_0(z_1) + u_0(z_2)] \delta_{x\alpha} + \frac{1}{2} \bar{G}_{\alpha\beta} F_\beta^s \\ &+ \frac{k_B T}{2} \bar{G}_{\alpha\beta} \nabla_{q,\beta} \ln \Psi - D_{\alpha\beta}^K \nabla_{r,\beta} \ln \Psi, \end{aligned} \quad (35)$$

$$\begin{aligned} \dot{q}_\alpha &= [u_0(z_2) - u_0(z_1)] \delta_{x\alpha} - \hat{G}_{\alpha\beta} F_\beta^s \\ &+ \frac{k_B T}{2} \bar{G}_{\alpha\beta} \nabla_{r,\beta} \ln \Psi - k_B T \hat{G}_{\alpha\beta} \nabla_{q,\beta} \ln \Psi, \end{aligned} \quad (36)$$

where  $\mathbf{F}^s = -\nabla_1 U^s$  is the spring force, and  $\mathbf{D}^K$  is the Kirkwood diffusion tensor, which characterises the diffusivity of macromolecules and is given by

$$\mathbf{D}^K = \frac{k_B T (\mathbf{G}^{11} + \mathbf{G}^{12} + \mathbf{G}^{21} + \mathbf{G}^{22})}{4}. \quad (37)$$

$\tilde{\mathbf{G}}$  and  $\hat{\mathbf{G}}$  are variants of the mobility tensors defined as

$$\tilde{\mathbf{G}} = \mathbf{G}^{11} - \mathbf{G}^{12} + \mathbf{G}^{21} - \mathbf{G}^{22}, \quad (38)$$

$$\hat{\mathbf{G}} = \mathbf{G}^{11} - \mathbf{G}^{12} - \mathbf{G}^{21} + \mathbf{G}^{22}. \quad (39)$$

The concentration field  $c(\mathbf{r}, t)$  can be obtained by integrating the probability function with respect to the spring coordinate. It is given by

$$c(\mathbf{r}, t) = \int \Psi(\mathbf{r}, \mathbf{q}, t) d\mathbf{q}. \quad (40)$$

We also define the probability function only for the spring coordinate as

$$\hat{\Psi}(\mathbf{q}, t; \mathbf{r}) = \frac{\Psi(\mathbf{r}, \mathbf{q}, t)}{c(\mathbf{r}, t)}. \quad (41)$$

These new fields satisfy the continuity conditions, such that

$$\frac{\partial c}{\partial t} = -\nabla_r \cdot (c \langle \dot{\mathbf{r}} \rangle_q), \quad (42)$$

$$\frac{\partial \hat{\Psi}}{\partial t} = -\nabla_q \cdot (\hat{\Psi} \dot{\mathbf{q}}), \quad (43)$$

where  $\langle \dots \rangle_q$  represents the average with the spring coordinate:

$$\langle \dots \rangle_q = \frac{\int \dots \Psi(\mathbf{r}, \mathbf{q}, t) d\mathbf{q}}{c(\mathbf{r}, t)} = \int \dots \hat{\Psi}(\mathbf{r}, \mathbf{q}, t) d\mathbf{q}. \quad (44)$$

For the limit of  $q \ll r$ ,  $\tilde{\mathbf{G}}$  and  $\mathbf{D}^K$  can be expanded using  $\mathbf{r}$ . Keeping only the leading term, we obtain

$$\tilde{\mathbf{G}} = \frac{3}{32\pi\eta_0 z^2} \begin{pmatrix} -q_z & 0 & -\chi q_x \\ 0 & -q_z & -\chi q_y \\ \chi q_x & \chi q_y & -2q_z \end{pmatrix} + \dots, \quad (45)$$

$$\mathbf{D}^K = \frac{k_B T}{12\pi\eta_0 a} \left[ \mathbf{I} + \frac{3a}{4} \mathbf{S}(\mathbf{q}) \right] + \dots, \quad (46)$$

where

$$\chi = \left[ 1 + \frac{q_x^2 + q_y^2}{4z^2} \right]^{-5/2}. \quad (47)$$

Note that the approximation is more accurate than that in a previous study<sup>31</sup> as that study considered only  $\chi \approx 1$ , which is not satisfied near the surface. With the approximation, eq. (36) is averaged by  $\hat{\Psi}$ , and finally we obtain the concentration flux for the  $z$  direction as

$$c \langle \dot{r}_z \rangle_q = c u_{\text{mig}}(z) - \frac{d}{dz} \left[ c \langle D_{zz}^K \rangle_q \right], \quad (48)$$

where

$$\begin{aligned} u_{\text{mig}}(z) &= \frac{1}{2} \langle \tilde{\mathbf{G}}_{z\beta} F_\beta^s - k_B T \nabla_{q\beta} \tilde{\mathbf{G}}_{z\beta} \rangle_q \\ &= \frac{3}{64\pi\eta_0 z^2} \\ &\quad \times \langle \chi (q_x F_x^s + q_y F_y^s) - 2q_z F_z^s - 2k_B T (\chi - 1) \rangle_q. \end{aligned} \quad (49)$$

Eq. (48) indicates two opposite fluxes of the polymers due to the external flow field. One is the migration flux from the wall toward the bulk and originates from the hydrodynamic interaction between the wall and the force dipoles.<sup>31</sup> The other is the diffusion flux from the bulk to the surface wall and is not found for polymers in uniform shear flows.<sup>31</sup> Note that the second flux includes not only the ordinary diffusion flux  $\langle D_{zz}^K \rangle_q \nabla_{r,z} c$ , but also the diffusion flux due to the  $q$  inhomogeneity,  $c \nabla_{r,z} \langle D_{zz}^K \rangle_q$ . When the external shear flow is uniform, the second flux vanishes, and the depletion length is proportional to the square of the shear rate, as the migration velocity is proportional to the normal stress difference.<sup>31</sup> In a plug flow, the diffusion flux suppresses the growth of the depletion layer, and this behaviour may explain why the exponent of the depletion length is much smaller than 2.0 in a uniform shear flow. In steady states of the electro-osmosis, the total flux in eq. (48) becomes zero; thus,

$$\frac{dc}{dz} = \frac{c}{\langle D_{zz}^K \rangle_q} \left( u_{\text{mig}} - \frac{d \langle D_{zz}^K \rangle_q}{dz} \right). \quad (50)$$

This equation shows that the migration flux and the diffusion flux are balanced at the peak of the concentration profiles. Finally the concentration profile is calculated as

$$c = c_b \exp \left[ \int_D^z \frac{1}{\langle D_{zz}^K \rangle_q} \left( u_{\text{mig}}(z') - \frac{d \langle D_{zz}^K \rangle_q}{dz} \right) dz' \right]. \quad (51)$$

The resultant flow profile can be calculated as

$$\delta u(z) = -\frac{1}{\eta_0} \int_0^z \sigma_{xz}^p(z') dz', \quad (52)$$

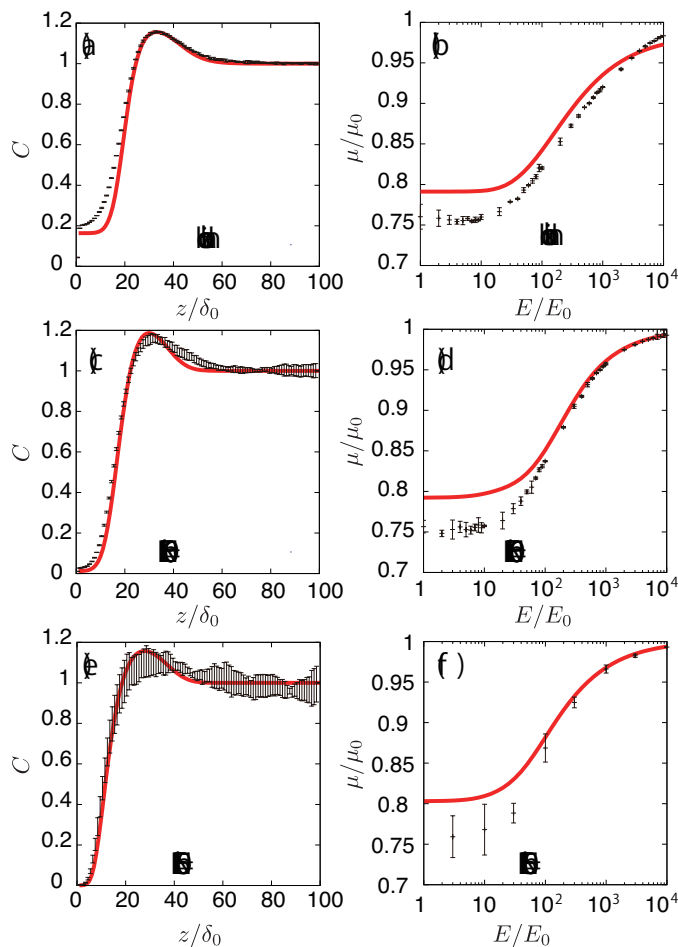
where  $\sigma^p$  is the polymeric part of the stress tensor:

$$\sigma^p = c \langle \mathbf{q} \mathbf{F}^s \rangle_q - c k_B T \mathbf{I}. \quad (53)$$

To obtain explicit expressions for  $c$  and  $\delta u$ , it is necessary to estimate  $u_{\text{mig}}$ ,  $\langle D_{zz}^K \rangle_q$ , and  $\sigma^p$ . For this purpose, eq. (43) should be analysed. However, eq. (43) is highly complicated. Even without the wall effects, it cannot be solved exactly, so several approximation methods have been proposed.<sup>44</sup> For simplicity, all the hydrodynamic interactions are ignored; thus, the continuity equation is given as

$$\frac{\partial \hat{\Psi}}{\partial t} = -\nabla_{q\alpha} \left[ \left( \frac{du_0}{dz} q_z \delta_{z\alpha} - \frac{2F_\alpha^s}{6\pi\eta_0 a} \right) \hat{\Psi} - \frac{2k_B T}{6\pi\eta_0 a} \nabla_{q\alpha} \hat{\Psi} \right]. \quad (54)$$

For the Hookian dumbbell, eq. (54) can be solved for the second moment of  $\mathbf{q}$ , and for the FENE dumbbell, a pre-averaged ap-



**Fig. 6** (a) Concentration profiles of the Hookian dumbbell as a function of the distance from the surface. Points show the simulation results; curved line is calculated by the kinetic theory. (b) Nonlinear electro-osmotic mobilities of the Hookian dumbbell as a function of an applied electric field. (c) and (d) Same as (a) and (b), respectively, but for the FENE dumbbell with  $b = 600$ . (e) and (f) Same as (a) and (b), respectively, but for the FENE dumbbell with  $b = 50$ .

proximation<sup>41,42</sup> is employed. The curved lines in Fig. 5 are calculated using these approximations, and they exhibit good quantitative agreement with the simulation results. Appendix B gives approximate expressions for these quantities of the Hookian and FENE dumbbells.

Fig. 6 (a), (c), and (e) show the concentration profiles for the applied field  $E = 1000E_0$ . The points are obtained by the Brownian dynamics simulation and the curved lines are obtained by the kinetic theory. The theoretical calculations quantitatively cover the simulations well. Moreover, they reproduce the differences in the concentration near the surface between the Hookian and FENE dumbbells, as the migration velocity can be approximately proportional to  $\langle \chi \rangle_q$  (see Appendix B), and it is greatly suppressed in the Hookian dumbbells. Fig. 6 (b), (d), and (f) show the nonlinear electro-osmotic mobilities with respect to the applied field. The theoretical curved lines also exhibit acceptable agreement with the simulation results. However, they are not as consistent with the simulation results under weak applied electric fields, as the equilibrium depletion layer is not considered in the kinetic

theory.

## 6 Summary and remarks

Brownian dynamics simulations are used to study nonlinear electro-osmotic behaviour of dilute polymer solutions. The simulation results agree with a toy model and analytical calculations using a kinetic theory. The main results are summarised below.

- (i) Under an external plug flow, the polymer migrates toward the bulk. The concentration profile of the polymer shows a depletion layer and a single peak. The thickness of the depletion layer depends on the electric field. At the peak, the migration flux is balanced by the diffusion flux.
- (ii) The growth of the depletion layer leads to an increase and saturation of the electro-osmotic mobility. This behaviour does not depend qualitatively on the rheological properties of the dumbbells.
- (iii) The results of analytical calculation of the concentration and the nonlinear mobility using the kinetic theory agree with the results of the Brownian dynamics simulation. The threshold of the electric field for nonlinear growth and saturation of the mobility is much larger than that predicted by the toy model, as the diffusive flux suppresses the migration toward the bulk due to the inhomogeneous shear flow.

We conclude this study with the following remarks.

- (1) Nonlinear electro-osmosis with  $\lambda \ll \delta_0$  has already been observed experimentally.<sup>26,27</sup> These studies reported that the mobility increased with increasing electric field. However, nonlinear electro-osmosis with  $\lambda \gg \delta_0$  has not been reported experimentally; therefore, experimental verification of our findings is highly desired.
- (2) It remains a future problem to determine whether the hydrodynamic interaction between the polymers and the surface plays an important role in electro-osmosis of polymer solutions with  $\lambda \ll \delta_0$ . In this case, the elongation of the polymers is strongly inhomogeneous under plug flow with a short Debye length; thus, more realistic chain models should be considered.
- (3) Addition of charged polymers to solutions can change the direction of the linear electro-osmotic flow.<sup>7,23</sup> When a sufficiently strong electric field is applied to this system, the flow might recover its original direction. This needs to be investigated theoretically and experimentally.

## Acknowledgement

The author is grateful to O. A. Hickey, T. Sugimoto, R. R. Netz, and M. Radtke for helpful discussions. The author also thanks M. Itami, M. R. Mozaffari, and T. Araki for their critical reading of the manuscript. This work was supported by the JSPS Core-to-Core Program “Nonequilibrium dynamics of soft matter and information”, a Grant-in-Aid for JSPS Fellows, and KAKENHI Grant No. 25000002.



## A Derivation of the velocity equation for Brownian dynamics simulation

In this appendix, the derivation of eq. (25) is explained. The velocity field induced by the polymer is given by

$$\delta u(z) = -\frac{1}{\eta_0} \int_0^z \sigma_{xz}^p(z) dz, \quad (55)$$

and the polymeric part of the stress tensor is obtained by averaging the microscopic expressions in the lateral directions as

$$\sigma_{\alpha\beta}^p = \frac{1}{L^2} \int dx dy \hat{\sigma}_{\alpha\beta}^p(\mathbf{x}). \quad (56)$$

Here the microscopic expression of the stress tensor is given by

$$\hat{\sigma}_{\alpha\beta}^p(\mathbf{x}) = -\frac{1}{2} \sum_n \sum_{m \neq n} F_{nm, \alpha} x_{nm, \beta} \delta_{nm}^s(\mathbf{x}), \quad (57)$$

where  $\mathbf{F}_{nm}$  is the force exerted on the  $n$ -th bead by the  $m$ -th bead, and  $\delta_{nm}^s(\mathbf{x})$  is the symmetrised delta function given by

$$\delta_{nm}^s(\mathbf{x}) = \int_0^1 ds \delta(\mathbf{x} - s\mathbf{x}_n - (1-s)\mathbf{x}_m). \quad (58)$$

The symmetrised delta function is integrated in the lateral directions as

$$\begin{aligned} \bar{\delta}_{nm}^s(z) &= \int dx dy \delta_{nm}^s(\mathbf{x}) = \int_0^1 ds \delta(z - sz_n - (1-s)z_m) \\ &= \frac{\theta(z - z_m) - \theta(z - z_n)}{z_n - z_m}, \end{aligned} \quad (59)$$

where  $\theta(z_n - z) = 1 - \theta(z - z_n)$ . Then we obtain

$$\begin{aligned} \int_0^z dz' \bar{\delta}_{nm}^s(z') &= \frac{(z - z_n)\theta(z - z_n) - (z - z_m)\theta(z - z_m)}{z_m - z_n} \\ &= \frac{\min(z, z_n) - \min(z, z_m)}{z_n - z_m}, \end{aligned} \quad (60)$$

where  $\min(z, z_n) = z\theta(z) - (z - z_n)\theta(z - z_n)$ . Finally, the velocity increment is expressed as

$$\begin{aligned} \delta u(z) &= \frac{1}{2\eta_0 L^2} \sum_{n,m} F_{nm,1}(z_n - z_m) \int_0^z dz' \bar{\delta}_{nm}^s(z') \\ &= \frac{1}{2\eta_0 L^2} \sum_{nm} F_{nm,1} [\min(z, z_n) - \min(z, z_m)] \\ &= \frac{1}{\eta_0 L^2} \sum_n \min(z, z_n) F_{n,1}. \end{aligned} \quad (61)$$

## B Approximated expressions for kinetic theory

### B.1 Hookian dumbbell

Eq. (54) can be rewritten in a closed form for the second moment of the spring coordinates in a steady state with an imposed plug flow. The solution is given by<sup>42</sup>

$$\langle \mathbf{q}\mathbf{q} \rangle_q = \frac{k_B T}{H} \begin{pmatrix} 1 + 2\phi^2 & 0 & \phi \\ 0 & 1 & 0 \\ \phi & 0 & 1 \end{pmatrix}, \quad (62)$$

where

$$\phi = \tau \frac{du_0}{dz} = \tau \kappa \mu_0 E e^{-\kappa z}. \quad (63)$$

Therefore, we have

$$\langle \mathbf{q}\mathbf{F}^s \rangle_q = H \langle \mathbf{q}\mathbf{q} \rangle_q, \quad (64)$$

and the polymeric stress tensor is

$$\begin{aligned} \boldsymbol{\sigma}^p &= c \langle \mathbf{q}\mathbf{F}^s \rangle - c k_B T \mathbf{I} \\ &= c k_B T \begin{pmatrix} 2\phi^2 & 0 & \phi \\ 0 & 0 & 0 \\ \phi & 0 & 0 \end{pmatrix}. \end{aligned} \quad (65)$$

The Kirkwood diffusion constant can be estimated as

$$\begin{aligned} \langle D_{zz}^K \rangle_q &= \frac{k_B T}{12\pi\eta_0 a} \left[ 1 + \frac{3a}{4} \left\langle \frac{1}{q} \left( 1 + \frac{q_z^2}{q^2} \right) \right\rangle \right] \\ &\approx \frac{k_B T}{12\pi\eta_0 a} \left[ 1 + \frac{3a}{4} \frac{\langle q^2 + q_z^2 \rangle}{\langle q^2 \rangle^{3/2}} \right], \end{aligned} \quad (66)$$

where the second term is split into the second-order moments; thus, we obtain

$$\langle D_{zz}^K \rangle_q = \frac{k_B T}{12\pi\eta_0 a} \left[ 1 + \frac{3a}{4\delta} \frac{2(\phi^2 + 2)}{(2\phi^2 + 3)^{3/2}} \right]. \quad (67)$$

It is differentiated by  $z$  as

$$\frac{d}{dz} \langle D_{zz}^K \rangle_q = \frac{k_B T}{12\pi\eta_0 a} \frac{3a}{4\delta} \frac{4\kappa\phi^2(\phi^2 + 3)}{(2\phi^2 + 3)^{5/2}}. \quad (68)$$

The migration velocity can be estimated using the splitting approximation of the averages as

$$\begin{aligned} u_{\text{mig}}(z) &= \frac{3k_B T}{64\pi\eta_0 z^2} \langle \chi(q_x^2 + q_y^2) - 2\chi \rangle_q \\ &\approx \frac{3k_B T}{32\pi\eta_0 z^2} \langle \chi \rangle_q \langle q_x^2 + q_y^2 - 2 \rangle_q \\ &= \frac{3k_B T}{32\pi\eta_0 z^2} \langle \chi \rangle_q \phi^2, \end{aligned} \quad (69)$$

where

$$\begin{aligned} \langle \chi \rangle_q &= \left\langle \left( 1 + \frac{q_x^2 + q_y^2}{4z^2} \right)^{-5/2} \right\rangle_q \\ &\approx \left( 1 + \frac{\phi^2 + 1}{2z^2} \right)^{-5/2}. \end{aligned} \quad (70)$$

### B.2 FENE dumbbell

The second moment of the spring coordinate for a FENE dumbbell can be obtained by pre-averaged closures of a p-FENE model.<sup>41,42</sup>

It is given by

$$\langle \mathbf{q}\mathbf{q} \rangle_q = \frac{k_B T}{H} \frac{\psi}{\phi} \begin{pmatrix} 1+2\psi^2 & 0 & \psi \\ 0 & 1 & 0 \\ \psi & 0 & 1 \end{pmatrix}, \quad (71)$$

and

$$\langle \mathbf{q}\mathbf{F} \rangle_q = k_B T \begin{pmatrix} 1+2\psi^2 & 0 & \psi \\ 0 & 1 & 0 \\ \psi & 0 & 1 \end{pmatrix}, \quad (72)$$

where

$$\psi = 6\sqrt{\frac{3+b}{54}} \sinh \left\{ \frac{1}{3} \operatorname{arcsinh} \left[ \frac{b\phi}{108} \left( \frac{3+b}{54} \right)^{-3/2} \right] \right\}. \quad (73)$$

The polymer stress tensor is

$$\boldsymbol{\sigma}^P = ck_B T \begin{pmatrix} 2\psi^2 & 0 & \psi \\ 0 & 0 & 0 \\ \psi & 0 & 0 \end{pmatrix}. \quad (74)$$

The Kirkwood diffusion constant is

$$\langle D_{zz}^K \rangle_q = \frac{k_B T}{12\pi\eta_0 a} \left[ 1 + \frac{3a}{4\delta} \sqrt{\frac{\phi}{\psi}} \frac{2(\psi^2+2)}{(2\psi^2+3)^{3/2}} \right], \quad (75)$$

and its derivative is

$$\begin{aligned} \frac{d}{dz} \langle D_{zz}^K \rangle_q &= \frac{k_B T}{12\pi\eta_0 a} \frac{3a}{4\delta} \times \kappa \sqrt{\frac{\phi}{\psi}} \\ &\times \left[ \phi \frac{d\psi}{d\phi} \frac{4\psi(\psi^2+3)}{(2\psi^2+3)^{5/2}} + \left( \frac{\phi}{\psi} \frac{d\psi}{d\phi} - 1 \right) \frac{2(\psi^2+2)}{(2\psi^2+3)^{3/2}} \right], \end{aligned} \quad (76)$$

where

$$\begin{aligned} \frac{d\psi}{d\phi} &= 2\sqrt{\frac{b+3}{54}} \cosh \left\{ \frac{1}{3} \operatorname{arcsinh} \left[ \frac{b\phi}{108} \left( \frac{3+b}{54} \right)^{-3/2} \right] \right\} \\ &\times \frac{b}{108} \left[ \left( \frac{b\phi}{108} \right)^2 + \left( \frac{b+3}{54} \right)^3 \right]^{-1/2}. \end{aligned} \quad (77)$$

Finally the migration velocity is obtained as

$$u_{\text{mig}} \approx \frac{3k_B T}{32\pi\eta_0 z^2} \langle \chi \rangle_q \psi^2, \quad (78)$$

where

$$\langle \chi \rangle_q \approx \left( 1 + \frac{\psi}{\phi} \frac{\psi^2+1}{2z^2} \right)^{-5/2}. \quad (79)$$

## References

- 1 S. S. Dukhin and B. V. Derjaguin, *Surface and Colloid Science*, ed. E. Matijevic, Wiley, New York, 1974, vol.7.
- 2 W. B. Russel, D. A. Saville, and W. R. Schowalter, *Colloidal Dispersions*, Cambridge University Press, Cambridge, 1989.
- 3 T. M. Squires and S. R. Quake, *Rev. Mod. Phys.*, 2005, **77**, 977.
- 4 X. Wang, C. Cheng, S. Wang, and S. Liu, *Microfluid Nanofluid*,

2009, **6**, 145.

- 5 F. H. J. van der Heyden, D. J. Bonthuis, D. Stein, C. Meyer, and C. Dekker, *Nano Lett.*, 2006, **6**, 2232.
- 6 Y. W. Kim and R. R. Netz, *J. Chem. Phys.*, 2006, **124**, 114709.
- 7 Y. Uematsu and T. Araki, *J. Chem. Phys.*, 2013, **139**, 094901.
- 8 D. J. Bonthuis, R. R. Netz, *Langmuir*, 2012, **28**, 16049.
- 9 C. Zhao and C. Yang, *Electrophoresis*, 2010, **31**, 973.
- 10 C. Zhao and C. Yang, *Biomicrofluids*, 2010, **5**, 014110.
- 11 C. Zhao and C. Yang, *J. Non-Newtonian Fluid Mech.*, 2011, **166**, 1076.
- 12 C. Zhao and C. Yang, *Adv. Colloid Interface Sci.*, 2013, **201-202**, 94.
- 13 J. Znalezniona, J. Peter, R. Knob, V. Maier, and J. Ševčík, *Chromatographia*, 2008, **67**, 5.
- 14 H. Ohshima, *J. Colloid Interface Sci.*, 1994, **163**, 474.
- 15 H. Ohshima, *Adv. Colloid Interface Sci.*, 1995, **62**, 189.
- 16 J. L. Harden, D. Long, and A. Ajdari, *Langmuir*, 2001, **17**, 705.
- 17 O. A. Hickey, C. Holm, J. L. Harden, and G. W. Slater, *Macromolecules (Washington, DC, U. S.)*, 2011, **44**, 4495.
- 18 S. Raafatnia, O. A. Hickey, and C. Holm, *Phys. Rev. Lett.*, 2014, **113**, 238301.
- 19 S. Raafatnia, O. A. Hickey, and C. Holm, *Macromolecules (Washington, DC, U. S.)*, 2015, **48**, 775.
- 20 O. A. Hickey, J. L. Harden, and G. W. Slater, *Phys. Rev. Lett.*, 2009, **102**, 108304.
- 21 X. Liu, D. Erickson, D. Li, and U. J. Krull, *Anal. Chim. Acta*, 2004, **507**, 55.
- 22 G. Danger, M. Ramonda, and H. Cottet, *Electrophoresis*, 2007, **28**, 925.
- 23 L. Feng, Y. Adachi, and A. Kobayashi, *Colloids Surf., A*, 2014, **440**, 155.
- 24 U.M.B. Marconi, M. Monteferrante, and S. Melchionna, *Phys. Chem. Chem. Phys.*, 2014, **16**, 25473.
- 25 F.-M. Chang and H.-K. Tsao, *App. Phys. Lett.*, 2007, **90**, 194105.
- 26 C. L. A. Berli and M. L. Olivares, *J. Colloid Interface Sci.*, 2008, **320** 582.
- 27 M. L. Olivares, L. Vera-Candioti, and C. L. A. Berli, *Electrophoresis*, 2009, **30**, 921.
- 28 C. L. A. Berli, *Electrophoresis*, 2013, **34**, 622.
- 29 M. S. Bello, P. de Besi, R. Rezzonico, P. G. Righetti, and E. Casiraghi, *Electrophoresis*, 1994, **15**, 623.
- 30 R. M. Jendrejack, D. C. Schwartz, J. J. de Pablo, and M. D. Graham, *J. Chem. Phys.*, 2004, **120**, 2513.
- 31 H. Ma and M. D. Graham, *Phys. Fluids*, 2005, **17**, 083103.
- 32 J. P. Hernández-Ortiz, H. Ma, J. J. de Pablo, and M. D. Graham, *Phys. Fluids*, 2006, **18**, 123101.
- 33 D. L. Ermak and J. A. McCammon, *J. Chem. Phys.*, 1978, **69**, 1352.
- 34 J. R. Blake, *Proc. Cambridge Philos. Soc.*, 1971, **70**, 303.
- 35 E. Wajnryb, K. A. Mizerski, P. J. Zuk, and P. Szymczak, *J. Fluid Mech.*, 2013, **731**, R3.
- 36 P. J. Zuk, E. Wajnryb, K. A. Mizerski, and P. Szymczak, *J. Fluid*

- Mech.*, 2014, **741**, R5.
- 37 J. W. Swan and J. F. Brady, *Phys. Fluids*, 2007, **19**, 113306.
- 38 Y. von Hansen, M. Hinczewski and R. R. Netz, *J. Chem. Phys.*, 2011, **134**, 235102.
- 39 I. Bitsanis and G. Hadziioannou, *J. Chem. Phys.*, 1990, **92**, 3827.
- 40 R. L. Christiansen and R. B. Bird, *J. Non-Newtonian Fluid Mech.*, 1977/1978, **3**, 161.
- 41 R. B. Bird, P. J. Dotson, and N.L. Johnson, *J. Non-Newtonian Fluid Mech.*, 1980, **7**, 213.
- 42 R. B. Bird, C. F. Curtiss, R. C. Armstrong, and O. Hassager, *Dynamics of Polymeric Liquids*, Wiley, New York, 1987, vol. 2.
- 43 M. Doi and S.F. Edwards, *The Theory of Polymer Dynamics*, Oxford University Press, New York, 1986.
- 44 W. Zylka and H. C. Öttinger, *J. Chem. Phys.*, 1989, **90**, 474.

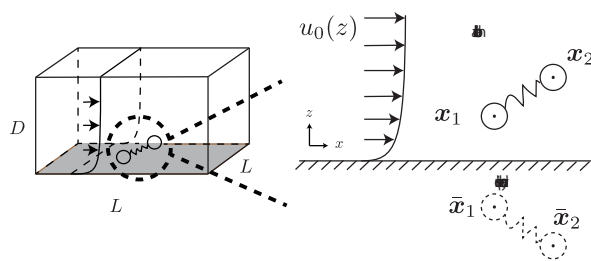


Figure 1: Nonlinear electro-osmosis of polymer solutions with low salinity is investigated using Brownian dynamics simulation and a kinetic theory.