

**Enantiodivergent Asymmetric Catalysis with the tropos
BIPHEP Ligand and a Proline Derivative as Chiral Selector**

Journal:	<i>Chemical Science</i>
Manuscript ID	SC-EDG-09-2015-003465.R1
Article Type:	Edge Article
Date Submitted by the Author:	08-Oct-2015
Complete List of Authors:	Oczipka, Philipp; RWTH Aachen University, Institut für Technische und Makromolekulare Chemie Müller, Dennis; RWTH Aachen University, Institut für Technische und Makromolekulare Chemie Leitner, Walter; RWTH Aachen University, Institut für Technische und Makromolekulare Chemie Franciò, Giancarlo; RWTH Aachen University, Institut für Technische und Makromolekulare Chemie

Enantiodivergent Asymmetric Catalysis with the *tropos* BIPHEP Ligand and a Proline Derivative as Chiral Selector

P. Oczipka,^a D. Müller,^a W. Leitner,^{*a} and G. Franciò^{*a}

Received 00th January 20xx,
Accepted 00th January 20xx

DOI: 10.1039/x0xx00000x

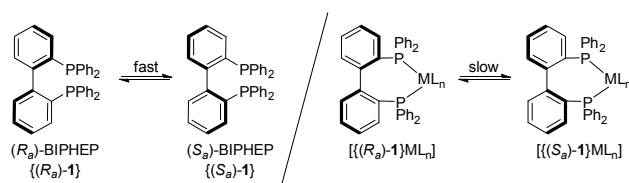
www.rsc.org/

A catalytic system based on the *tropos* ligand BIPHEP and (*S*)-proline methyl ester as chiral selector was studied for Rh-catalysed asymmetric catalysis. By careful control of the catalyst preformation conditions, the enantioselectivity could be completely reversed in asymmetric hydrogenation of prochiral olefins maintaining the same absolute level in favorable cases. The enantiodivergent asymmetric catalysis could be rationalised by the interplay of the dynamic chirality (*tropos*) of the phosphine ligand and the coordination of the proline selector. Treating a suitable Rh-BIPHEP precursor with the (*S*)-proline-based ionic liquid led to an equimolar mixture of (*R*,*S*)- and (*S*,*S*)- diastereomers that is kinetically stable at 0 °C. At higher temperature, an irreversible diastereomerisation process was observed resulting in the diastereomerically pure (*R*,*S*)-complex [Rh{(*R*,*S*)-BIPHEP}{(*S*)-ProlOMe}]. Whereas the use of the pure (*R*,*S*)-complex led to 51 % *ee* (*R*) in the hydrogenation of methyl 2-acetamidoacrylate, the *S*-product was formed with almost identical enantioselectivity when the (*R*,*S*)/(*S*,*S*)-mixture was applied under identical conditions. This inversion was associated with the relative stability of the diastereomers in the equilibria forming the catalytically active substrate complex. The possibility to use this different reactivity to control the direction of enantioselectivity was demonstrated for the hydrogenation of different substrates whereby *ee*'s of up to 80 % could be achieved. Moreover, the (*R*,*S*)-complex led to high enantioselectivities of up to 86 % *ee* in the asymmetric hydroboration of styrene, approaching the performance of the *atropos* BINAP ligand for this reaction.

Introduction

Asymmetric organometallic catalysis is one of the most useful synthetic tools for producing enantioenriched compounds.¹ The stereo-information usually provided by chiral ligands is efficiently “multiplied”² and high catalytic activities at high levels of stereocontrol can be achieved in a variety of transformations. Some of the most effective ligands with “permanent” chirality are atropisomeric (*atropos*)³ bidentate disphosphine ligands such as BINAP⁴ or MeO-BIPHEP.⁵

In contrast, fluxional *tropos* BIPHEP (**1**) ligands rapidly interconvert at room temperature between the *R_a* and *S_a* conformation (“dynamic chirality”, Scheme 1).



Scheme 1: Fluxional behavior of the ligand BIPHEP (**1**).

Upon coordination to a metal center, however, the rotation about the biaryl axis is much slower and a racemic pair is obtained.^{6,7} Thus, with the aid of an enantiomeric pure co-ligand^{3,8} or counteranion,^{9,10} which act as a chiral template, a dynamic resolution of the BIPHEP (**1**) backbone can be conveyed and the resulting diastereomerically pure complexes may be isolated.^{11,12} After displacement of the chiral template molecule (diols, diamines, aminoalcohols, or dienes) the enantiomeric pure BIPHEP-metal fragment can be used in asymmetric catalysis, provided the racemisation is slow at the conditions of catalytic turnover. This approach was first demonstrated by Gagné¹³ and applied by Mikami in different catalytic reactions.¹⁴ Inter alia, high enantioselectivities in the Rh-catalysed hydrogenation have been reported by Mikami¹⁵ and Brown¹⁶. All these examples have the following features in common: Complete resolution of the coordinated BIPHEP-ligand (diastereomerisation¹⁷) was always accomplished prior to use the complex in catalysis; otherwise no or very poor enantioselectivity was observed.^{16,18} Only in cases where ligand and selector both remain coordinated to the complex while the substrate is converted, as in Noyori-type catalysts, a complete diastereomerisation was not mandatory due to different reactivity of the two diastereomers in the outer-sphere hydrogen transfer (so called “asymmetric activation”).¹⁹

Independently from our studies reported here, the group of Trapp recently developed BIPHEP derivatives that contain covalently bound chiral auxiliaries at the 3,3'-positions. These chiral substituents can also act as chiral selectors for the

^a Institut für Technische und Makromolekulare Chemie, RWTH Aachen University, Worringerweg 2, 52074 Aachen, Germany. E-Mail: francio@itmc.rwth-aachen.de; leitner@itmc.rwth-aachen.de

† Electronic Supplementary Information (ESI) available: See DOI: 10.1039/x0xx00000x

biphenyl backbone, as demonstrated with “bidirectional enantioselectivity” in Rh-catalysed hydrogenation²⁰ and selective binding for analytical purposes.²¹

In a complementary approach, research from our laboratories has shown that good enantioselectivities can be achieved with *tropos* BIPHEP ligands using a chiral ionic liquid (IL) as the reaction medium in the Rh-catalysed hydrogenation.²² The same approach proved successful employing the racemic atropisomeric ligand BINAP together with the chiral IL.²³ NMR-spectroscopic analysis and kinetic studies furnished evidences that the enantiodifferentiation in this system results from coordination of the proline ester moiety to the chiral cation, effectively blocking one of the two enantiomeric Rh-phosphine units.²³ A similar “chiral-poisoning mechanism” was evidenced for cationic *rac*BINAP/Rh-catalysts in the presence of BINOL-based borate anions.²⁴

Here, we report a fundamental investigation of the dynamic interaction of catalytically active fragment and chiral selector responsible for the chirality transfer when [HProlOMe][NTf₂]⁻ (**2**) is used as the enantiopure auxiliary in combination with the *tropos* BIPHEP ligand in Rh-catalysed transformations.²² This knowledge allowed us to set appropriate conditions for the preferred formation of either the *R*- or *S*-configured products with almost identical absolute enantioselectivity using the identical catalytic system in the asymmetric hydrogenation of the same substrate. The catalytic system could be successfully applied also in the Rh-catalysed hydroboration demonstrating that the BIPHEP backbone can lead to very significant asymmetric inductions also in this transformation.

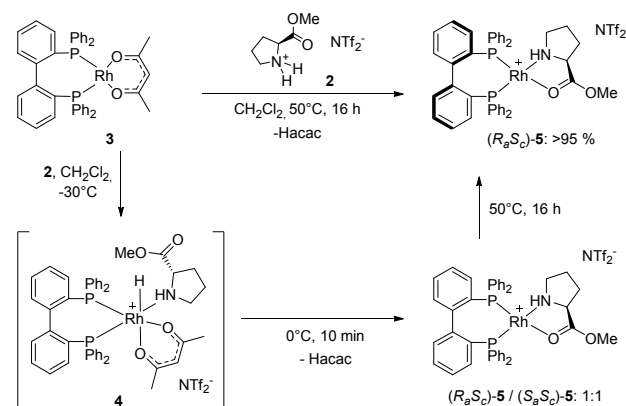
Results and discussion

Synthesis, characterisation, and dynamics of Rh-complexes

While the Rh-BIPHEP catalyst was prepared *in situ* in presence of the chiral selector in our preliminary communication,²² we set out to generate a defined complex of type [Rh(BIPHEP)(ProlOMe)][NTf₂]⁻ (**5**). Following the procedure developed for the BINAP system,²⁵ the complex [Rh(BIPHEP)(acac)]²⁶ was treated with a slight excess of the prolininium IL [HProlOMe][NTf₂]²⁷ (**2**) in CH₂Cl₂. By monitoring this reaction with ¹H and ³¹P NMR at -30 °C, we found that formation of **5** involves the formal oxidative addition of **2** at the Rh(I)-center followed by reductive elimination of acetylacetonate leading to the *N,O*-chelation of the proline ester (Scheme 2).

The two diastereomers of the intermediate Rh(III)-BIPHEP-hydride species (**4**) were formed in a 1:1 ratio in solution at -30 °C as deduced from multinuclear NMR spectroscopy (Figure 1). The structure of **4** was assigned on the basis of following spectroscopic data: i) in the ³¹P NMR, two sets of doublets of doublets for each diastereomer were observed indicating different *trans*-substituents to each phosphorus; ii) in the characteristic hydride region of the ¹H NMR, a doublet of triplets for each diastereomer was observed arising from the ¹⁰³Rh-coupling and two almost identical ³¹P-coupling, respectively; iii) distinct signals for the two methyl groups of the acetylacetonato ligand were present in ¹H and ¹³C-NMR; furthermore, cross peaks from both sides of the acetylacetonato

group with P-nuclei in the ¹H-³¹P-hmhc spectrum indicated that acetylacetonate is η²-coordinated to the Rh-center and has different substituents in *trans*-position of each oxygen donor.



Scheme 2. Reaction of Rh-BIPHEP complex **3** with [HProlOMe][NTf₂]⁻ **2**

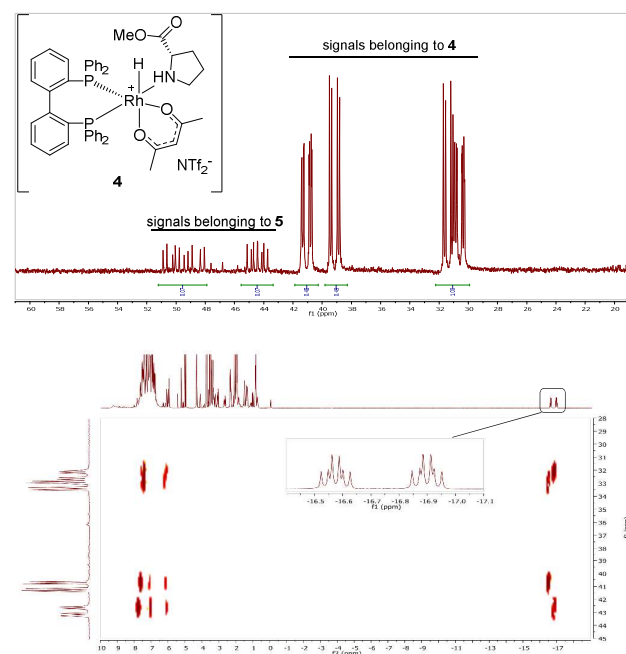


Fig. 1 ³¹P{¹H}-NMR (CD₂Cl₂, -30 °C) of Rh complexes **4** (major) and **5** (minor) (upper spectrum) and 2D-NMR-HMBC-³¹P-¹H-NMR of the same sample showing coupling to hydride signals (bottom spectrum).

At 0 °C the octahedral Rh(III) complex **4** rapidly eliminates acetylacetonate (Hacac) resulting in the formation of the square planar cationic Rh(I) complex [Rh(BIPHEP)(ProlOMe)][NTf₂]⁻ **5**. As observed for the catalyst system Rh-*rac*BINAP/**2**,²³ the chiral IL [HProlOMe][NTf₂]⁻ **2** serves upon deprotonation as the source of (*S*)-proline methylester as a *N,O*-chelating ligand. The complex is characterised by two sets of doublets of doublets for each diastereomer in the ³¹P NMR indicating different donor

ligand *trans* to the bisphosphine. The signal sets centred at $\delta = 52.1$ and 45.8 are assigned to (R_aS_c) -**5**, those at $\delta = 50.44$ and 46.3 to the (S_aS_c) -**5** diastereomer, respectively. The assignment of the configuration in the BIPHEP ligand is based on the catalytic results (*vide infra*) upon comparison with the atropisomeric ligand BINAP under the plausible assumption that identical axial chirality will lead to the same preferred product configuration.

The equimolar ratio of (S_aS_c) -**5** and (R_aS_c) -**5** does not vary even over extended period of time when the temperature is maintained at or below 0°C . However, raising the temperature to room temperature leads to the decrease of one set of signals on the expense of the other pair, indicating that a diastereomerisation process takes place (Figure 2). The signals of (S_aS_c) -**5** gradually decrease and completely disappear by heating the mixture at 50°C for 20 h resulting in the clean formation of (R_aS_c) -**5** (>95 % by NMR).²⁸ This process is irreversible, and no reformation of the (S_aS_c) -diastereomer was observed by temperature variation in any direction once the diastereomerisation was completed.

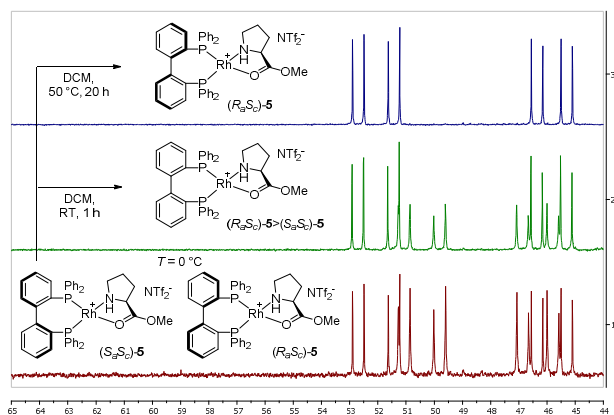


Fig. 2 Diastereomerisation of the 1:1 (S_aS_c) -**5**: (R_aS_c) -**5** mixture to (R_aS_c) -**5** upon raising the temperature monitored by $^{31}\text{P}\{^1\text{H}\}$ -NMR spectra (CD_2Cl_2).

These results demonstrate that proline-methylester acts as very effective chiral selector that is able to affect the dynamic behaviour of the BIPHEP ligand **1** in the Rh-chelate fragment and eventually to dictate the thermodynamically preferred axial chirality of the *tropos*-moiety in $[\text{Rh}(\text{BIPHEP})\text{-(ProLOMe)}][\text{NTf}_2]$ (**5**). The rate of the diastereomerisation reaction was determined at 25°C , 30°C , 35°C and 50°C via ^{31}P -NMR in dichloroethane- d_4 as solvent. From the resulting Arrhenius-plot the rotation barrier for the conversion of (S_a) - to (R_a) -BIPHEP in **5** was determined as $24.3 \pm 1 \text{ kcal mol}^{-1}$. This barrier is higher than the energy required for the tropo-inversion of the free ligand ($22 \pm 1 \text{ kcal mol}^{-1}$)^{29,30} and in good agreement with the value of $25.0 \text{ kcal mol}^{-1}$ reported by Faller for the racemisation of $[\{(S_a)$ -BIPHEP] $\text{Rh}(\text{CO})_2]$.⁷ A slightly higher activation energy ($26.1 \text{ kcal mol}^{-1}$) was reported for the pseudo-racemisation of the substituted ligand in $[\{(S_aSS)$ -3,3'-BIPHEP^{ONap*}] $\text{Rh}(\text{cod})\text{BF}_4$ by Trapp.²⁰

Asymmetric Hydrogenation

The diastereomerically pure complex (R_aS_c) -**5** was evaluated first as catalyst for asymmetric hydrogenation (Table 1). Using a solution of (R_aS_c) -**5** prepared as described above, the prototypical substrate methyl 2-acetamidoacrylate (**6**) could be hydrogenated quantitatively in CH_2Cl_2 at 0°C resulting in 51 % *ee* for the (R) -enantiomer (entry 1). Monitoring the hydrogen uptake at a strongly reduced catalyst to substrate ratio of 1:4000 revealed full conversion after 75 min corresponding to a TON of 4000 and an average TOF_{av} of 3200 h^{-1} while maintaining the same level of asymmetric induction. Addition of 2.5 eq of the achiral acid HNtF_2 to promote the dissociation of the chiral template has no significant impact on the enantioselectivity yielding 53 % *ee* (R) under otherwise identical conditions (entry 2). Raising the reaction temperature to 35°C resulted in a slightly reduced *ee* (46 % (R), entry 3). This value is still slightly higher than the enantioselectivity (44 % *ee*) reported by Punniyamurthy and Brown using $[\{(S_a)$ -BIPHEP] $\text{Rh}\{(S,S)\text{-bicyclo}[3.3.1]\text{nona-2,6-diene}\}^+\text{CF}_3\text{SO}_3^-$ as precursor at room temperature.¹⁶ Decreasing the reaction temperature to -20°C led to an increase of enantioselectivity to 56 % *ee* (R) (entry 4). While somewhat lower enantioselectivities were observed upon using THF and methanol as solvents (47 % *ee*, entry 5; and 49 % *ee* entry 6; respectively), a substantial increase could be achieved using alcohol/water mixtures as the reaction medium (entries 7-9). The best results were achieved with a 1:1 methanol/water mixture resulting in 66 % *ee* (R).

Table 1. Rh-catalysed asymmetric hydrogenation of methyl 2-acetamidoacrylate (**6**) using (R_aS_c) -**5** as catalyst^[a]

Nr.	T [$^\circ\text{C}$]	Solvent	<i>ee</i> [%]
1 ^[b]	0	DCM	51 (R)
2	0	DCM	53 (R)
3	35	DCM	45 (R)
4	-20	DCM	56 (R)
5	0	THF	47 (R)
6	0	MeOH	49 (R)
7	0	2-PrOH / H_2O : 1/1	55 (R)
8	0	EtOH / H_2O : 1/1	57 (R)
9	0	MeOH / H_2O : 1/1	66 (R)

^[a] See the exp. Section for the procedure. Full conversion achieved in all experiments.

^[b] No HNtF_2 was added.

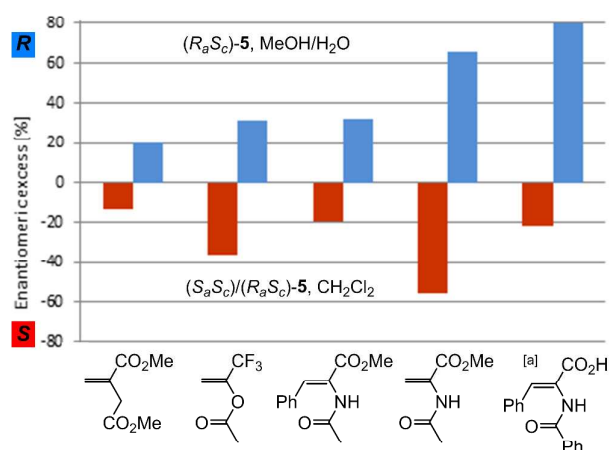
Analysis of the reaction mixture after complete hydrogenation of the substrate by $^{31}\text{P}\{^1\text{H}\}$ -NMR spectroscopy revealed that the complex (R_aS_c) -**5** was the major species present in solution

(>90% see SI). Only very small signals of other BIPHEP-Rh-species were observed, but no signals resulting from the diastereomeric complex (S_aS_c)-**5** could be detected. This observation further corroborates the high stability of the (R_aS_c)-configuration pair. Under the reasonable assumption that the hydrogenation under these conditions follows a typical Halpern-Brown mechanism,³¹ this observation is consistent with a release/catch mechanism where (R_aS_c)-**5** serves as pre-catalyst for the catalytically active complex $[\{(R_a)-\text{BIPHEP}\}\text{Rh}(\mathbf{6})]^+$. The chirality of the chelating phosphine unit is stabilised and prevented from racemisation by re-coordination of the proline ester once the substrate is converted and product is released.

A striking different result was obtained when the diastereomeric mixture (R_aS_c)/(S_aS_c)-**5** was used as pre-catalyst. Under identical condition as in Table 1 entry 1, the hydrogenation of **6** resulted in preferential formation of the (S)-product with 51 % *ee*. Thus, the same absolute value of enantioselectivity was achieved but towards the opposite enantiomer as with the (R_aS_c)-**5** complex (Figure 3).³² As the racemisation of the BIPHEP-Rh unit is very slow at 0°C, this indicates that product formation now occurs practically exclusively *via* (S_a)-configured phosphine-rhodium complexes.

The $^{31}\text{P}\{^1\text{H}\}$ -NMR spectra of the mixture recorded after the catalysis support this assumption. The relative concentration of (R_aS_c)-**5** had not changed significantly indicating that only a small fraction of (S_aS_c)-**5** was potentially converted to the more stable diastereomer (see SI). The signals of (S_aS_c)-**5** were, however, considerably broadened and partially converted to new species with signals in the similar region, most probably associated with the corresponding π -phenyl bridged dimer.³³ Thus, the “inverse” enantioselectivity obtained with the (R_aS_c)/(S_aS_c)-**5** mixture can be explained by a chiral poisoning mechanism.²³ While the proline methyl ester is very readily displaced by the incoming substrate from the less stable (S_aS_c)-**5**, the thermodynamically preferred (R_aS_c)-**5** remains “catalytically silent” under competitive conditions. Thus, the enantiodivergent asymmetric hydrogenation with **5** can be rationalised by the relative stability of the two diastereomeric complexes in the pre-equilibrium to form the catalytically active substrate complex.

The catalytic system was then evaluated in the asymmetric hydrogenation of structurally different prochiral olefins (Figure 3). In all cases the enantiodivergent formation of either the (S)- or the (R)-product was observed using the (R_aS_c)/(S_aS_c)-**5** mixture or the pure (R_aS_c)-**5** complex, respectively. The enantioselectivity achieved with the single diastereomer (R_aS_c)-**5** as pre-catalyst can be regarded as the intrinsic maximum asymmetric induction of the enantiomerically pure BIPHEP ligand in the Rh-catalysed hydrogenation under the given conditions. Moderate enantioselectivities were achieved in the hydrogenation using dimethylitaconate, methyl 2-(trifluoromethyl)acrylate, and methyl 2-acetamido-3-phenylacrylate. *Z*-2-benzamido-3-phenylacrylic acid could be hydrogenated with 80 % *ee* in MeOH/H₂O using (R_aS_c)-**5**, thus even surpassing the *ee* of the standard substrate **6**.



[a] MeOH/H₂O was used also with the diastereomeric mixture (R_aS_c)/(S_aS_c)-**5**.

Fig. 3 Enantiodivergent asymmetric hydrogenation of prochiral substrates with (R_aS_c)-**5** and (R_aS_c)/(S_aS_c)-**5**. Full conversion was obtained in all experiments.

The magnitude of absolute enantioselectivity obtained towards the opposite product enantiomer with the diastereomeric mixture (R_aS_c)/(S_aS_c)-**5** in CH₂Cl₂ as solvent is generally in the same range as with the pure diastereomer, except for *Z*-2-benzamido-3-phenylacrylic acid where both reactions were carried out in MeOH/H₂O. The strong influence of substrate and solvent on the absolute value of the inversion may reflect the influence of the equilibria precluding the catalytic cycle.

Remarkably, the enantioselectivities obtained with this system are in a similar range than those observed with the enantiopure *atropis* ligand BINAP in rhodium-catalysed hydrogenation of these substrates. Whereas higher *ee*'s are observed with BINAP for *Z*-2-benzamido-3-phenylacrylic acid (96%)³³ and dimethylitaconate (67%),²⁴ they are lower for methyl 2-acetamido-3-phenylacrylate (16%)³⁴ and methyl 2-acetamidoacrylate (25%)²³. For the latter substrate, very high *ee*'s were reported by Mikami (95%)¹⁵ and Brown (81%)¹⁶ using substituted BIPHEP ligands, showing a clear path for future developments.

Asymmetric Hydroboration

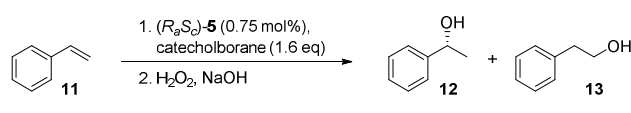
Next, the use of *tropis* BIPHEP together with the chiral selector **2** was evaluated in the Rhodium-catalysed hydroboration of styrene. Atropisomeric ligands like BINAP belong to the most efficient diphosphines for this transformation.^{35,36} Recently, Faller et al. used a diastereomerically pure (S_a)-BIPHEP-Rh complex bearing an enantiomerically pure diene as chiral auxiliary in this reaction. However, only a very low enantioselectivity of 12 % *ee* was obtained with this pre-catalyst.⁷

Using the diastereomeric mixture (R_aS_c)/(S_aS_c)-**5** as pre-catalyst for the hydroboration of styrene with catecholborane under various conditions resulted only in racemic product. This indicates that the substrates are able to displace the proline-methylester from both complexes with equal efficiency, resulting in two enantiomeric catalytic cycles. In contrast, an enantioselectivity of 55 % *ee* at full conversion was achieved using the diastereomerically pure pre-

catalyst (R_aS_c)-**5** in THF within 1 h at room temperature (Table 2, entry 1). Lowering the temperature to 0 °C, both the regio- (97 %) and the enantioselectivity (70 % *ee*) could be enhanced (entry 2). A temperature reduction to -50 °C resulted in a further increase of the enantioselectivity (77 % *ee*) albeit at the expenses of strongly reduced conversion (entry 3). Using 1,2-dimethoxyethane (1,2-DME) as solvent gave similar enantioselectivities, but conversion now remained high even at the very low temperatures (entries 4-5). Most gratifyingly, the use of 2-methyl-tetrahydrofuran (2-Me-THF), which is recommended as most sustainable ether-type solvent by solvent selection guides,³⁷ allowed to achieve full conversion, perfect regioselectivity, and an *ee* of 86 % (entry 6).

The performance of the *tropos* BIPHEP together with the proline-based selector **2** compares well with that obtained with the enantiomerically pure *atropos* ligand (R_a)-BINAP under optimised comparable conditions (88% *ee* (*R*), 54% conversion, 1h, -50 °C, 1,2-DME)³⁵. This demonstrates that the chirality adjusted in the flexible ligand framework during the diastereomerisation is maintained stable throughout the catalytic cycle. Together with the previous results of Fallér et al., this suggests that the proline-based auxiliary is again not only responsible for the selection, but also the stabilisation of the chiral fragment under catalytic conditions.

Table 2: Hydroboration of styrene with catecholborane using (R_aS_c)-**5** as catalyst



Nr.	solvent	t [h]	T [°C]	Conv. [%]	12/13 [%]	ee [%]
1	THF	1	r.t.	>99	93	55 (<i>R</i>)
2	THF	3	0 °C	>99	97	70 (<i>R</i>)
3	THF	12	-50 °C	8	95	77 (<i>R</i>)
4	1,2-DME	3	0 °C	>99	97	70 (<i>R</i>)
5	1,2-DME	12	-50 °C	91	>99	79 (<i>R</i>)
6	2-Me-THF	12	-50 °C	>99	>99	86 (<i>R</i>)

Conclusions

The combination of the simple *tropos* BIPHEP ligand and the readily accessible proline-based IL [(S_c)-HProLOMe][NTf₂] (**2**) as chiral selector provides an effective system for high levels of enantioselectivity in rhodium catalysed reactions. In asymmetric hydrogenation, it is one of the few systems that can generate both enantiomeric products from a prochiral olefin using the same catalyst components under identical reaction conditions. The key to this enantiodivergent asymmetric catalysis lies in the temperature control during the formation of the pre-catalyst by reaction of the [Rh(BIPHEP)(acac)] with **2**, providing selective access to the kinetic product mixture (R_aS_c)/(S_aS_c)-[Rh(BIPHEP)(ProLOMe)][NTf₂] (**5**) or the thermodynamically preferred (R_aS_c)-**5** as single diastereomer (Figure 4).

The diastereomeric mixture and the pure diastereomer constitute two sides of a *Janus*-faced catalytic system yielding the two product configurations with similar or even identical absolute levels of *ee* depending on the nature of the substrate. When the diastereomeric mixture is used, the chiral selector is readily displaced from (S_aS_c)-diastereomer and the resulting catalytically active (S_a)-BIPHEP/Rh species lead to the preferential formation of the *S*-hydrogenation products. Whereas the more stable (R_aS_c)-**5** diastereomer remains silent under these competitive conditions, it acts as effective pre-catalyst and stabilizer for the (R_a)-BIPHEP/Rh fragment, resulting in up to 80% *ee* in hydrogenation reactions. The diastereomerically pure (R_aS_c)-**5** could be also successfully used in the asymmetric hydroboration resulting in full conversion, perfect regioselectivity, and an enantioselectivity of 86% *ee*, competitive with the best results obtained with the enantiopure *atropos* BINAP ligand in this transformation.

The results of this study fosters the increasing evidence that the strategy of combining a latent chiral *tropos* BIPHEP ligand and a chiral selector opens new opportunities in the asymmetric catalysis. It demonstrates that adaptive chiral systems can be steered into different enantiomeric reaction channels on basis of the understanding of the underlying mechanism. Using cheap and readily available proline as the chiral selector is of course attractive from a practical point of view. At the same time, the modular approach of the present systems allows exploitation of the structural diversity of amino acid esters and other chelating structures as the selector as well as the use of ligands with different fluxional backbones,³⁸ opening a broad range of possibilities for further optimisation and application.

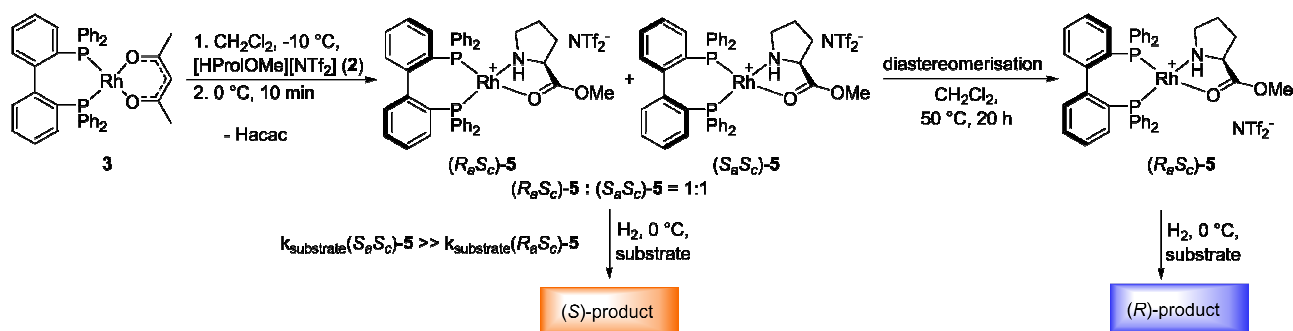


Fig. 4 Overall scheme for enantiodivergent asymmetric catalysis using BIPHEP and the prolin-based selector **2** via the diastereomeric complexes **5**.



Chemical Science

ARTICLE

Acknowledgements

We thank the company W. C. Heraeus for generous supply of precious metal precursors, Christel Dittmer (IOC, RWTH Aachen) for HR-MS measurements, Wolfgang Falter for ESI-MS measurements, Julia Wurlitzer and Hannelore Eschmann for GC- and HPLC-analysis and Ines Bachmann-Remy for NMR-measurements. This work was supported by the priority program 1191 of the Deutsche Forschungsgemeinschaft (SPP 1191: Schwerpunktprogramm ionic liquids).

Notes and references

- E. N. Jacobsen, A. Pfaltz, H. Yamamoto, *Comprehensive Asymmetric Catalysis*, Springer, Berlin, 1999.
- H. Brunner, *J. Organomet. Chem.* 1986, **300**, 39-56; R. Noyori, *Chem. Soc. Rev.* 1989, **18**, 187.
- K. Mikami, K. Aikawa, Y. Yusa, J. J. Jodry and M. Yamanaka, *Synlett* 2002, 1561.
- R. Noyori and T. Ohkuma, *Angew. Chem., Int. Ed.* 2001, **40**, 40.
- R. Schmid, E. A. Broger, M. Cereghetti, Y. Cramer, J. Foricher, M. Lalonde, R. K. Muller, M. Scalone, G. Schoettel and U. Zutter, *Pure Appl. Chem.* 1996, **68**, 131.
- M. D. Tudor, J. J. Becker, P. S. White and M. R. Gagné, *Organometallics*, 2000, **19**, 4376.
- J. W. Faller and J. C. Wilt, *J. Organomet. Chem.* 2006, **691**, 2207.
- K. Mikami and S. Matsukawa, *Nature* 1997, **385**, 613.
- J. Lacour and V. Hebbe-Viton, *Chem. Soc. Rev.* 2003, **32**, 373.
- M. Mahlau and B. List, *Angew. Chem., Int. Ed.* 2013, **52**, 518.
- N. Kurono, T. Katayama and T. Ohkuma, *Bull. Chem. Soc. Jpn.* 2013, **86**, 577.
- For diastereomerisation of BIPHEP-type phosphine oxides over chiral solid supports and their use as organocatalysts in asymmetric aldol condensation, see: F. Maier and O. Trapp, *Angew. Chem. Int. Ed.* 2014, **53**, 8756.
- J. J. Becker, P. S. White and M. R. Gagné, *J. Am. Chem. Soc.* 2001, **123**, 9478.
- K. Aikawa and K. Mikami, *Chem. Commun.* 2012, **48**, 11050.
- T. Punniyamurthy, M. Mayr, A. S. Dorofeev, C. J. R. Bataille, S. Gosiewska, B. Nguyen, A. R. Cowley and J. M. Brown, *Chem. Commun.* 2008, 5092.
- K. Aikawa, Y. Takabayashi, S. Kawauchi and K. Mikami, *Chem. Commun.* 2008, 5095.
- C. Wolff, *Dynamic Stereochemistry of Chiral Compounds*, RSC Publishing, Cambridge, 2008.
- K. Mikami, K. Aikawa and Y. Yusa, *Org. Lett.* 2002, **4**, 95.
- K. Mikami, T. Korenaga, M. Terada, T. Ohkuma, T. Pham and R. Noyori, *Angew. Chem., Int. Ed.* 1999, **38**, 495.
- G. Storch and O. Trapp *Angew. Chem., Int. Ed.* 2015, **54**, 3580.
- G. Storch, M. Siebert, F. Rominger and O. Trapp, *Chem. Commun.* 2015, DOI: 10.1039/C5CC06306J.
- M. Schmitkamp, D. Chen, W. Leitner, J. Klankermayer and G. Franciò, *Chem. Commun.* 2007, 4012.
- D. Chen, M. Schmitkamp, G. Franciò, J. Klankermayer and W. Leitner, *Angew. Chem. Int. Ed.* 2008, **47**, 7339.
- D. Chen, B. Sundararaju, R. Krause, J. Klankermayer, P. H. Dixneuf and W. Leitner, *ChemCatChem* 2010, **2**, 55.
- [Rh(BIPHEP)(acac)] was synthesised from [Rh(CO)₂(acac)] and one equivalent of BIPHEP: see SI for details.
- A. Jegorov, J. Podlaha, J. Podlahová and F. Tureček, *J. Chem. Soc., Dalton Trans.*, 1990, 3259.
- G.-h. Tao, L. He, N. Sun and Y. Kou, *Chem. Commun.* 2005, 3562.
- The assignment of the absolute axial chirality is based on the catalytic results upon comparison with atropisomeric ligand like BINAP under the plausible hypothesis that identical axial chirality will lead to the same preferred product configuration: vide infra.
- O. Desponds and M. Schlosser, *Tetrahedron Lett.* 1996, **37**, 47.
- For the quantification of the inversion barrier of several 3,3'-substituted BIPHEP and BIPHEPO derivatives, see: F. Maier and O. Trapp, *Angew. Chem. Int. Ed.* 2012, **51**, 2985.
- J. M. Brown, Hydrogenation of functionalised carbon-carbon double bonds, in *Comprehensive Asymmetric Catalysis*, Eds. E. N. Jacobsen, A. Pfaltz, H. Yamamoto, Vol. 1, pag. 121-182, Springer 1999, Berlin.
- For recent examples of enantioinversion see: R. J. Chew, X.-R. Li, Y. Li, S. A. Pullarkat and P.-H. Leung *Chem. Eur. J.* 2015, **21**, 4800; M. K. Ilg, L. M. Wolf, L. Mantilli, C. Farès, W. Thiel and A. Fürstner *Chem. Eur. J.* 2015, **21**, 12279.
- For instance the π -phenyl bridged Rh-BINAP dimer displays in ³¹P NMR a doublet at δ 46.41 ppm ($J_{\text{RhP}} = 199.2$ Hz): A. Miyashita, H. Takaya, T. Souchi and R. Noyori, *Tetrahedron* **1984**, **40**, 1245.
- A. Preetz, H.-J. Drexler, S. Schulz and D. Heller, *Tetrahedron: Asymmetry* 2010, **21**, 1226.
- C. M. Crudden and D. Edwards, *Eur. J. Org. Chem.* 2003, 4695.
- T. Hayashi, Y. Matsumoto and Y. Ito, *Tetrahedron: Asymmetry* **1991**, **2**, 601.
- D. Prat, O. Pardigon, H.-W. Flemming, S. Letestu, V. Ducandas, P. Isnard, E. Guntrum, T. Senac, S. Ruisseau, P. Cruciani and P. Hosek, *Org. Proc. Res. Dev.* 2013, **17**, 1517.
- See for instance: K. Mikami, K. Wakabayashi, Y. Yusa and K. Aikawa, *Chem. Commun.* 2006, 2365.

Do not look at the following list!

- ¹ E. N. Jacobsen, A. Pfaltz, H. Yamamoto, *Comprehensive Asymmetric Catalysis*, Springer, Berlin, **1999**.
- ² H. Brunner, *J. Organomet. Chem.* **1986**, **300**, 39-56; R. Noyori, *Chem. Soc. Rev.* **1989**, **18**, 187-208.
- ³ K. Mikami, K. Aikawa, Y. Yusa, J. J. Jodry and M. Yamanaka, *Synlett* **2002**, 1561.
- ⁴ R. Noyori and T. Ohkuma, *Angew. Chem., Int. Ed.* **2001**, **40**, 40-73.
- ⁵ R. Schmid, E. A. Broger, M. Cereghetti, Y. Cramer, J. Foricher, M. Lalonde, R. K. Muller, M. Scalone, G. Schoettel and U. Zutter, *Pure Appl. Chem.* **1996**, **68**, 131-138.
- ⁶ M. D. Tudor, J. J. Becker, P. S. White and M. R. Gagné, *Organometallics*, **2000**, **19**, 4376-4384.
- ⁷ J. W. Faller and J. C. Wilt, *J. Organomet. Chem.* **2006**, **691**, 2207-2212.
- ⁸ K. Mikami and S. Matsukawa, *Nature* **1997**, **385**, 613-617.
- ⁹ J. Lacour and V. Hebbe-Viton, *Chem. Soc. Rev.* **2003**, **32**, 373-382.
- ¹⁰ M. Mahlau and B. List, *Angew. Chem., Int. Ed.* **2013**, **52**, 518-533.
- ¹¹ N. Kurono, T. Katayama, T. Ohkuma, *Bull. Chem. Soc. Jpn.* **2013**, **86**, 577-582.
- ¹² For diastereomerisation of BIPHEP-type phosphine oxides over chiral solid supports and their use as organocatalysts in asymmetric aldol condensation, see: F. Maier and O. Trapp, *Angew. Chem. Int. Ed.*, **2014**, **53**, 8756-8760.
- ¹³ J. J. Becker, P. S. White and M. R. Gagné, *J. Am. Chem. Soc.* **2001**, **123**, 9478
- ¹⁴ K. Aikawa and K. Mikami, *Chem. Commun.* **2012**, **48**, 11050-11069; K. Aikawa, Y. Miyazaki, K. Mikami, *Bull. Chem. Soc. Jpn.* **2012**, **85**, 201-208.
- ¹⁵ K. Aikawa, Y. Takabayashi, S. Kawauchi and K. Mikami, *Chem. Commun.* **2008**, 5095-5097.
- ¹⁶ T. Punniyamurthy, M. Mayr, A. S. Dorofeev, C. J. R. Bataille, S. Gosiewska, B. Nguyen, A. R. Cowley and J. M. Brown, *Chem. Commun.* **2008**, 5092-5094.
- ¹⁷ C. Wolff, *Dynamic Stereochemistry of Chiral Compounds*, RSC Publishing, Cambridge, **2008**.
- ¹⁸ K. Mikami, K. Aikawa and Y. Yusa, *Org. Lett.* **2002**, **4**, 95-97.
- ¹⁹ K. Mikami, T. Korenaga, M. Terada, T. Ohkuma, T. Pham, R. Noyori, *Angew. Chem., Int. Ed.* **1999**, **38**, 495-497.
- ²⁰ G. Storch and O. Trapp *Angew. Chem., Int. Ed.* **2015**, **54**, 3580-3586.
- ²¹ G. Storch, M. Siebert, F. Rominger, O. Trapp *Chem. Commun.* **2015**, DOI: 10.1039/C5CC06306J
- ²² M. Schmitkamp, D. Chen, W. Leitner, J. Klankermayer and G. Franciò, *Chem. Commun.* **2007**, 4012-4014.
- ²³ D. Chen, M. Schmitkamp, G. Franciò, J. Klankermayer and W. Leitner, *Angew. Chem. Int. Ed.* **2008**, **47**, 7339-7341.
- ²⁴ D. Chen, B. Sundararaju, R. Krause, J. Klankermayer, P. H. Dixneuf and W. Leitner, *ChemCatChem* **2010**, **2**, 55-57.
- ²⁵ [Rh(BIPHEP)(acac)] was synthesised from [Rh(CO)₂(acac)] and one equivalent of BIPHEP: see SI for details.
- ²⁶ A. Jegorov, J. Podlaha, J. Podlahová and F. Tureček, *J. Chem. Soc., Dalton Trans.*, **1990**, 3259-3263
- ²⁷ G.-h. Tao, L. He, N. Sun and Y. Kou, *Chem. Commun.* **2005**, 3562-3564.
- ²⁸
- ²⁹ O. Desponds and M. Schlosser *Tetrahedron Lett.*, **1996**, 3747-48.
- ³⁰ For the quantification of the inversion barrier of several 3,3'-substituted Biphep derivatives see: F. Maier and O. Trapp, *Angew. Chem. Int. Ed.* **2012**, **51**, 2985-2988
- ³¹ J. M. Brown, Hydrogenation of functionalised carbon-carbon double bonds, in *Comprehensive Asymmetric Catalysis*, Eds. E. N. Jacobsen, A. Pfaltz, H. Yamamoto, Vol. 1, pag. 121-182, Springer **1999**, Berlin.
- ³² For a recent examples of enantioinversion see: R. J. Chew, X.-R. Li, Y. Li, S. A. Pullarkat, P.-H. Leung *Chem. Eur. J.* **2015**, **21**, 4800-4804; M. K. Ilg, L. M. Wolf, L. Mantilli, C. Farès, W. Thiel, A. Fürstner *Chem. Eur. J.* **2015**, **21**, 12279-12284.
- ³³ For instance the η^5 -phenyl bridged Rh-BINAP dimer displays in ³¹P NMR a doublet at δ 46.41 ppm ($J_{\text{RhP}} = 199.2$ Hz): A. MiYashita, H. Takaya, T. Souchi, R. Noyori. *Tetrahedron* **1984**, **40**, 1245-1253.
- ³⁴ A. Preetz, H.-J. Drexler, S. Schulz and D. Heller, *Tetrahedron: Asymmetry* **2010**, **21**, 1226
- ³⁵ C. M. Crudden and D. Edwards, *Eur. J. Org. Chem.* **2003**, 4695-4712.
- ³⁶ T. Hayashi, Y. Matsumoto and Y. Ito, *Tetrahedron: Asymmetry* **1991**, **2**, 601-612.
- ³⁷ D. Prat, O. Pardigon, H.-W. Flemming, S. Letestu, V. Ducandas, P. Isnard, E. Guntrum, T. Senac, S. Ruisseau, P. Cruciani and P. Hosek, *Org. Proc. Res. Dev.* **2013**, **17**, 1517-1525.
- ³⁸ See for instance: K. Mikami, K. Wakabayashi, Y. Yusa, K. Aikawa, *Chem. Commun.* **2006**, 2365-2367.