

# RSC Advances



This is an *Accepted Manuscript*, which has been through the Royal Society of Chemistry peer review process and has been accepted for publication.

*Accepted Manuscripts* are published online shortly after acceptance, before technical editing, formatting and proof reading. Using this free service, authors can make their results available to the community, in citable form, before we publish the edited article. This *Accepted Manuscript* will be replaced by the edited, formatted and paginated article as soon as this is available.

You can find more information about *Accepted Manuscripts* in the [Information for Authors](#).

Please note that technical editing may introduce minor changes to the text and/or graphics, which may alter content. The journal's standard [Terms & Conditions](#) and the [Ethical guidelines](#) still apply. In no event shall the Royal Society of Chemistry be held responsible for any errors or omissions in this *Accepted Manuscript* or any consequences arising from the use of any information it contains.

# The Structural Evolution of an Isoindigo-based Non-Fullerene Acceptor for Use in Organic Photovoltaics

Seth M. McAfee,<sup>1†</sup> Jessica M. Topple,<sup>2</sup> Jon-Paul Sun,<sup>2</sup> Ian G. Hill,<sup>2\*</sup> and Gregory C. Welch<sup>1\*†</sup>

Department of Chemistry<sup>1</sup>, Department of Physics<sup>2</sup>, Dalhousie University, 6274 Coburg Road, Halifax, Nova Scotia, Canada B3H 4R2

**Key Words:** *Organic Semiconductors, Organic Solar Cells, Solution Processed Small Molecules, Isoindigo, Non-Fullerene Acceptors*

**ABSTRACT:** The structural evolution of a functional isoindigo-based non-fullerene acceptor led to the development of three new materials to address the deficiencies of the original framework. Owing to the versatility of the structure and the flexibility of the synthetic procedures, these three new materials were accessible from previously optimized reaction conditions and similar precursor materials. The influence of structural modification on the optical, electrochemical and thermal properties were assessed and correlated with DFT calculations to provide compelling evidence for the effect of each substitution and how they relate to each particular adaptation. The structure-property relationships were investigated for their photovoltaic performance in solution processable BHJ devices fabricated in inverted architectures. Evaluation of device performance demonstrated that a single modification did not improve on the efficiency of the original structure, but the combination of both induced non-planarity, and increased electron affinity of the fourth iteration showed the potential of our framework, with PCE reaching 1.9 %.

## 1. INTRODUCTION

Solution processed organic photovoltaic devices (OPVs) represent a clean energy generating technology due to their potential for low-cost manufacturing *via* printing techniques.<sup>1–7</sup> The field of OPVs is dominated by the conjugated polymer-fullerene bulk heterojunction (BHJ) solar cell.<sup>8–10</sup> The development of soluble organic small molecules in place of either, or both, the polymer and fullerene components in BHJ solar cells is an active area of research.

The key advantages of molecular materials are related to their well-defined structures, high absorption coefficients, readily tunable electronic energy levels, and ease of synthesis.<sup>11–15</sup> Early development of molecular active layer materials focused on replacing polymeric donor materials with small molecule donors. The invested interest in small molecule donors has led to PCEs above 9 % when combined with fullerene derivatives in solution processable BHJ OPV devices.<sup>16–20</sup> On the other hand, the development of small molecule fullerene alternatives was initially quite difficult, and until recently the highest performances remained below 3 %.<sup>21</sup> Within the last year this rapidly evolving field has seen significant improvements in the performance of non-fullerene based organic solar cells, and just in the last few months, PCEs are now exceeding 6 %, using small molecule acceptors.<sup>22–26</sup>

Key to the development of new high performance materials is to understand the structure-property relationships at play and identify the strengths and weaknesses of the framework. Considering this, successful non-fullerene small molecule acceptors are designed to exploit the properties that make fullerene derivatives such excellent electron acceptors while at the same time improving on their well-documented deficiencies including cost, synthetic accessibility and poor light harvesting properties. For more information on the history of fullerenes

and how to replace them we refer the reader to several recent reviews.<sup>27–33</sup>

One of the most prominent classes of non-fullerene acceptors are based around perylene diimide (PDI) core structures,<sup>34–37</sup> known for their large extinction coefficients and high electron mobilities. The structure-property relationships of perylene acceptors have been extensively studied, with the major obstacle facing PDI derivatives identified as their tendency for strong aggregation into crystalline domains.<sup>38,39</sup> Therefore their designs are dictated by the requirement for bulky aliphatic side chains,<sup>40,41</sup> or framework substituents,<sup>42–44</sup> to mitigate large-scale aggregate formation. Despite the favorable accessibility of the perylene building block, their synthesis can be demanding and low yielding, with the formation of unwanted isomers a persistent challenge limiting their synthetic scalability.<sup>45</sup>

Small molecule non-fullerene acceptors that do not implement a PDI core structure have been demonstrated to offer key advantages in comparison to their PDI-based counterparts. These materials can be designed under similar principles as many PDI-based acceptors,<sup>46</sup> but are not plagued by the same structural and synthetic limitations. They are usually simplistic in nature, and offer a modular structure accessible from a straightforward synthetic procedure.<sup>47–49</sup>

The recent development of a high performance indacenodithiophene-based non-fullerene acceptor serves to highlight the importance of a versatile structure and the enormous potential for these materials to evolve and reach new echelons in performance. In this case, the incorporation of branched aliphatic side chains to the bridging thiophene units of original design,<sup>50</sup> saw an approximately 60 % increase in performance with device optimization.<sup>22</sup> This was followed by a third iteration that instead fused the thiophene bridging units and returned the highest recorded performance non-fullerene acceptor to date at

6.8 % PCE.<sup>25</sup> Evidently, these small structural changes had a major influence on the performance of this class of materials, further demonstrating the influence of the structure on material properties and performance.

Considering the overwhelming potential for massive performance increases as a result of structural modification, we decided to take advantage of the versatility and synthetic accessibility of an isoindigo small molecule non-fullerene acceptor recently designed and synthesized in our lab. **Oct-II(ThPhth-1EP)<sub>2</sub>** is a low-cost electron deficient small molecule that can be synthesized *via* a sustainable synthetic protocol from readily available building blocks.<sup>51</sup> In terms of material properties, **Oct-II(ThPhth-1EP)<sub>2</sub>** exhibited several desirable characteristics, (1) a broad and extended absorption profile efficient for light harvesting, (2) low-lying lowest unoccupied molecular orbital (LUMO) energy levels suitable for its use as an acceptor component in OPVs and (3) excellent thermal stability. OPV devices employing *p*-DTS(FBTTh<sub>2</sub>)<sub>2</sub> as the donor component were found to have high open circuit voltages ( $V_{oc}$ ) but suffered from poor current generation. While device engineering and innovative active layer processing can lead to significant performance increases,<sup>52–56</sup> we instead decided to focus on synthetic chemistry to refine this initial framework in the pursuit of improved efficiencies.

Herein we detail the design, synthesis and characterization of three new isoindigo non-fullerene acceptors modeled from our initial structure and explore the influence of this structural evolution on material performance through proof-of-concept organic photovoltaic devices.

## 2. DESIGN AND SYNTHESIS

It is well known that the infinite tunability of organic small molecules enables systematic alterations to the molecular structure with the goal of realizing improved material performance. This advantageous feature was been exploited to improve the performance of our previously reported non-fullerene acceptor **Oct-II(ThPhth-1EP)<sub>2</sub>**, referred to hereafter as **S1**.

### 2.1 Materials Design

Experimental evidence related to the poor device performance of **S1** highlighted two main concerns, thin-film morphology and energy level alignment.

The most noticeable issue was the tendency of **S1** to form crystalline domains,<sup>51</sup> as observed by thin-film X-ray diffraction (TF-XRD) and atomic force microscopy (AFM). Although as-cast films were amorphous, post-deposition thermal and solvent vapour annealing led to the materialization of crystalline domains. The best performance for devices with **S1** as the acceptor component was achieved with the inclusion of a small volume fraction of 1,8-diiodooctane (DIO) in the active layer blend. The introduction of DIO induced a more subtle change to the blend morphology and so we propose that this improved efficiency results from a more favourable mixing of the active layer components.

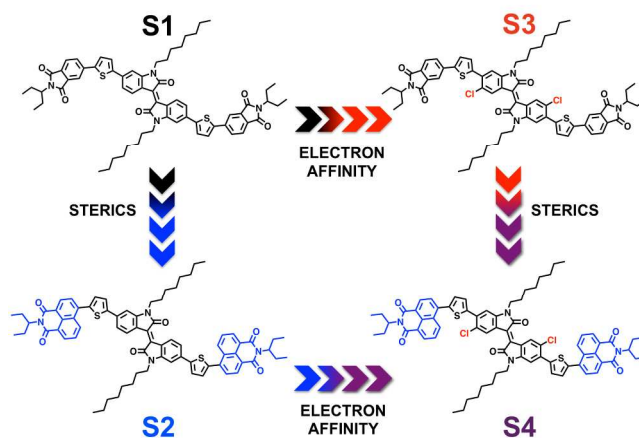
Another area of interest was to increase the electron-accepting character of **S1**. This acceptor has a relatively high LUMO level of  $-3.67$  eV relative to the vacuum,<sup>51</sup> in comparison to many of the high performance small molecule non-

fullerene acceptors in the literature, which tend to exist at approximately  $-3.8$  eV or below.<sup>27</sup> Therefore we had considered that perhaps a slight increase in the electron affinity of **S1** could be beneficial for more efficient charge separation and lead to further increases in efficiency.

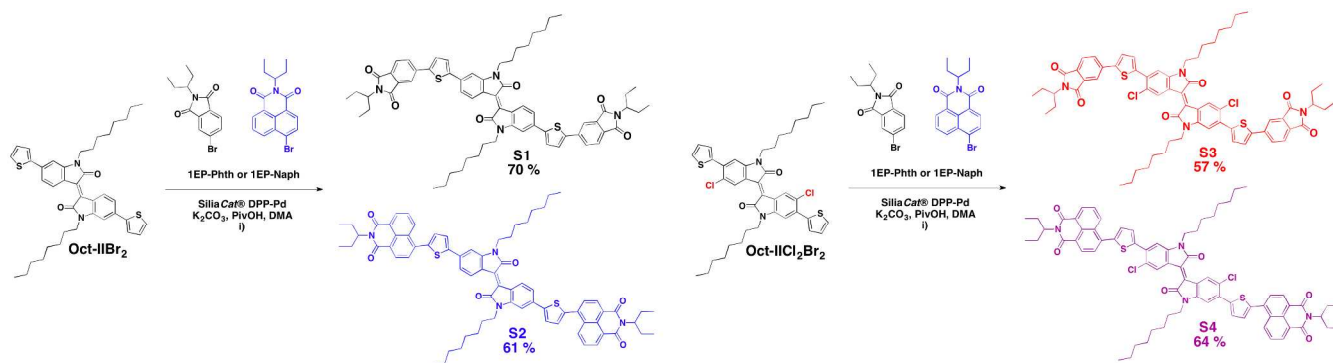
With these considerations in mind, the structural evolution focused on two prominent design strategies often employed in the design on non-fullerene acceptors: (1) bulky substituents and induced non-planarity to reduce the tendency for strong  $\pi$ - $\pi$  interactions and large aggregate formation, and (2) strong electron-withdrawing functionalities to increase the  $\pi$ -accepting character of the molecular framework.

The systematic structural modification of **S1** is depicted in Figure 1, and has been devised to decouple the influence of introducing steric demand to- and increasing the electron affinity of- the  $\pi$ -conjugated system. The molecular design of **S2** focused on introducing steric bulk to the  $\pi$ -conjugated backbone in the form of a naphthalimide terminal acceptor in place of the less encumbering phthalimide unit. Naphthalimide is another promising imide building block that has a notable use in some recent high performance non-fullerene acceptors.<sup>57–59</sup> Although, more importantly for our design, naphthalimide has been shown to reduce the overall crystallinity of a given material as a consequence of its steric demand. This has been communicated in previous work from our group with an analogous diketopyrrolopyrrole small molecule,<sup>60</sup> which revealed the complete loss of a crystallization trace in the DSC thermogram upon the substitution of phthalimide for naphthalimide. It is expected that this feature will also manifest itself in **S2** where steric bulk should judiciously disrupt the co-planarity of naphthalimide and the adjacent thiophene bridging unit and obstruct crystallization.

To address our interest in increasing the electron affinity of the  $\pi$ -conjugated backbone **S3** was designed to incorporate a chlorine atom at the 5,5' positions on the aromatic rings of the isoindigo core. The substitution of chlorine for hydrogen is proposed to serve a dual purpose, (1) increase the electron affinity by replacing hydrogen with the more electronegative chlorine atom, and (2) slightly disrupt the co-planarity between the isoindigo core and thiophene bridging unit as a re-



**Figure 1.** The structural evolution of isoindigo non-fullerene acceptors with increased electron affinity and reduced crystallinity in pursuit of a favorable morphology and increased OPV device efficiencies.



**Scheme 1.** Synthesis of isoindigo small molecules **S1–4** i) 2.2 eq of **1EP-Phth** or **1EP-Naph**, 5 mol % SiliaCat®DPP-Pd, 30 mol % PivOH, and 2.5 eq  $K_2CO_3$ , 80 °C for 16 hours.

sult of the more sterically demanding chlorine atom.

The final structure, **S4**, represents an elegant design based on the concept that the sum is greater than the parts. The integration of a chlorinated isoindigo core within a naphthalimide terminated  $\pi$ -conjugated framework was desirable to synergistically tailor the energy levels of the material and cleverly distort backbone planarity in pursuit of a less crystalline and more favourable thin-film morphology that would translate into improved OPV device performance.

## 2.2 Materials Synthesis

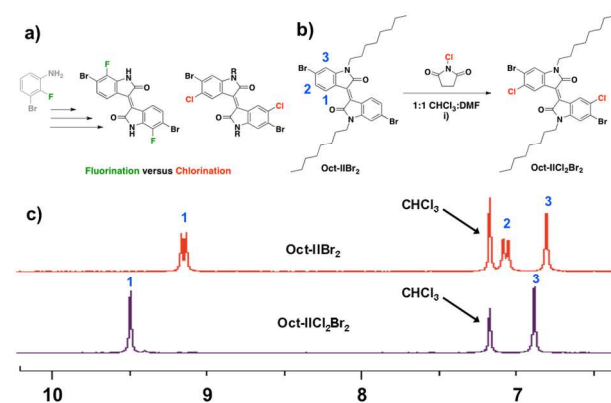
The following describes the synthetic strategies used to access isoindigo derivatives **S2–4** (Scheme 1). We refer the reader to our previous work for the complete synthesis of **S1**, and the precursor materials relevant to the synthesis of **S2–4**.<sup>51</sup> The final isoindigo small molecules **S1–4** were identified by  $^1H$  and  $^{13}C$  NMR spectroscopy, mass spectrometry and elemental analysis with  $^1H$ - $^1H$  COSY NMR spectroscopy to confirm regio-selectivity of the direct heteroarylation couplings. Complete experimental details for all new precursors and final materials can be found in the Experimental Section.

The isoindigo derivative **S2** was synthesized from the same molecular core as **S1**, albeit with coupling to a naphthalimide, **1EP-Naph**, rather than phthalimide, **1EP-Phth**, terminal acceptor. This **1EP-Naph** terminal acceptor was synthesized from its anhydride through a base catalyzed condensation with 1-ethylpropylamine (0.98 g, 78 %). The precursor molecular core, **Oct-IITH<sub>2</sub>**, was then coupled with this terminal acceptor through Pd catalyzed direct heteroarylation employing the heterogeneous catalyst SiliaCat® DPP-Pd. The use of this heterogeneous catalyst for C-H bond activation has proven to be a versatile synthetic strategy that has been extensively used within our research group.<sup>51,61–63</sup> SiliaCat® DPP-Pd has been shown to not only match homogeneous alternatives, but also circumvent inert reaction conditions, and diminish trace Pd metal impurities in the final product.<sup>61</sup> The use of the heterogeneous catalyst also simplified the reaction work up and purification since it can be easily removed from the soluble product simply through vacuum filtration. The filtrate was subsequently concentrated under reduced pressure and the product purified by flash column chromatography with  $CH_2Cl_2$  as the eluent. The final product was isolated as a purple-black solid

and washed with a hot solution of iPrOH to remove any residual polar impurities (0.28 g, 63 %).

The syntheses of isoindigo derivatives **S3** and **S4** was analogous to those of **S1** and **S2**, the difference being the requirement of a chlorinated isoindigo precursor. The incorporation of halogen atoms to a final isoindigo material is not a foreign concept, with both fluorinated<sup>64–66</sup> and chlorinated<sup>67</sup> derivatives reported in the literature. Fluorination is by far the most popular, highlighted by several publications within the last few years, but requires a fluorinated precursor to the base isoindigo core.<sup>66</sup> On the other hand, the chlorination reaction offers the advantage of being accessible onto a previously synthesized and alkylated isoindigo core unit.

In this structure chlorination occurs primarily at the 5,5' positions, directed to the *ortho* position by bromine substituent of **Oct-IIBr<sub>2</sub>** and away from the position nearest the amido nitrogen. This selectivity is different from fluorinations which typically occur at the 7,7' due to the *ortho*-directing groups  $-Br$  and  $-NH_2$  of the 3-bromoaniline precursor (Figure 2a). The electrophilic chlorination of isoindigo with *N*-chlorosuccinimide (NCS) has been previously reported for the synthesis of polymeric materials,<sup>67</sup> but until now has not been exploited in a molecular framework (Figure 2b). Although not exclusively selective to the 5,5' position in the presence of any excess NCS, the use exact stoichiometry, 2.0 equivalents, re-



**Figure 2.** a) Fluorinated and chlorinated isoindigo materials b) Chlorination of **Oct-IIBr<sub>2</sub>** i) 2.0 eq of NCS, 70 °C for 16 hours and c)  $^1H$  NMR spectra of the aromatic region shows the disappearance of **2** illustrating full conversion to the chlorinated precursor **Oct-IICl<sub>2</sub>Br<sub>2</sub>**.

sults in nearly full conversion to the chlorinated product (Figure 2c). The subsequent work up and purification of the chlorinated isoindigo core was straightforward. The reaction mixture was concentrated under reduced pressure and the product isolated by filtration, washing with H<sub>2</sub>O and MeOH. This was followed by dissolution in CH<sub>2</sub>Cl<sub>2</sub> and precipitation into pentanes to yield a dark red-purple solid (0.58 g, 87 %).

In a similar protocol to that outlined for the synthesis of **Oct-IHTh<sub>2</sub>**, the chlorinated isoindigo product was flanked with thiophene bridging units through a SiliaCat® DPP-Pd catalyzed and microwave-assisted Stille reaction. Again, benefiting from the use of a heterogeneous catalyst, the work up of final product was facile. **Oct-IICl<sub>2</sub>** was isolated from the catalyst by vacuum filtration and the solvent removed under reduced pressure to yield a dark purple-brown solid thoroughly washed with pentanes to remove residual impurities, and did not require purification by flash column chromatography (0.48 g, 88 %).

Isoindigo derivative **S3** and **S4** were both synthesized from the chlorinated precursor material **Oct-IICl<sub>2</sub>** through the same direct heteroarylation protocol outlined previously for **S2**. The synthesis of **S3** occurred through the coupling between the chlorinated isoindigo molecular core and **1EP-Phth**, while the synthesis of **S4** made use of **1EP-Naph** as the terminal acceptor. Both products were isolated and purified in the same manner as **S2**, and yielded dark black solids (0.23 g, 57 % and 0.22 g, 64 % respectively).

### 3. CHARACTERIZATION

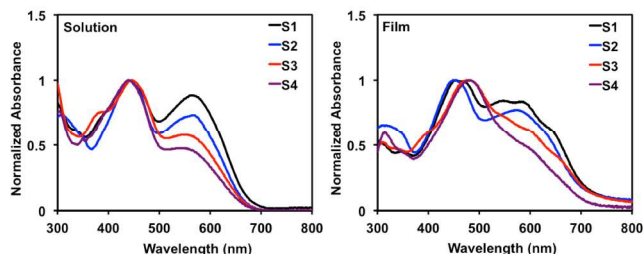
The structure-property relationships that manifest from the structural evolution of **S1** were closely analyzed by UV/visible spectroscopy (UV/vis), cyclic voltammetry (CV), and differential scanning calorimetry (DSC). Table 1 summarizes the observed properties of **S1–4** and the results will be discussed in the following section.

#### 3.1 Optical Properties

The optical absorption profiles of isoindigo derivatives **S1–4** were collected by UV/visible absorption spectroscopy (UV/vis), solution and thin-film spectra are shown in Figure 3. In accordance with our previous publication, each small molecule was subject to thermal and solvent vapour post-deposition annealing to investigate their influence on thin-film absorption profiles. Individual absorption profiles under these conditions can be found in the Supporting Information.

The solution absorption spectra of small molecule isoindigo derivatives **S1–4** have two distinct features, a low-energy absorption band at approximately x nm and a high-energy band at approximately 450 nm. In comparing the relative intensities of these two bands a significant variance is observed with each

structural modification. To emphasize this noteworthy change in the low-energy HOMO to LUMO transition, the absorption spectra have been normalized to the high-energy band at 450



**Figure 3.** Normalized solution and thin-film absorption profiles of isoindigo non-fullerene acceptors **S1–4**. Spectra obtained from 1.0 w/v % solutions in CHCl<sub>3</sub> and cast onto glass substrates.

nm.

As we substitute naphthalimide for phthalimide in **S2**, we see a sizeable decrease in the intensity of this band; which becomes reduced further in **S3** when substituting a chlorinated isoindigo core, with **S4** displaying the largest drop in this intensity. This suggests that the successive modifications to the original isoindigo framework have a direct influence on the intensity, and therefore the probability of these orbital transitions.

The source of these observed differences is proposed to originate from the sterically hindered co-planarity of the framework, which translates into inefficient orbital mixing of the donor and acceptor components within the structure. Introducing a twist to the  $\pi$ -conjugated backbone will disrupt the extent of  $\pi$ -orbital delocalization and consequently hinder electronic transitions. We have previously discussed how naphthalimide for phthalimide substitution at the terminal acceptor can have this effect,<sup>60</sup> and thus can be correlated with the observed spectra. Similarly, the integration of chlorine atoms can also disrupt planarity; however, the influence on orbital transitions is more pronounced in this case as it directly involves the isoindigo core where the LUMO is largely localized. Therefore it is rational that **S4**, which incorporates both of these sterically demanding modifications, has the most restricted low-energy transition.

Thin-film UV/vis spectra have provided additional insight towards the influence of the structural evolution on optical properties. In the solid state, each absorption profile is red-shifted, consistent with similar dyes in the literature.<sup>68,69</sup> The red-shift is more pronounced for the chlorinated derivatives **S3** and **S4**, suggesting that the chlorine atoms play a role in the solid state self-assembly of these materials. Similar to the solution profiles, a reduced low energy transition is observed for each subsequent structural modification. Further evidence

**Table 1.** A summary of the optical, electronic and thermal properties of isoindigo small molecules **S1–4**.

Small Molecule	Abs <sub>max</sub> (nm) <sup>a</sup>	Abs <sub>onset</sub> (nm) <sup>a</sup>	IE (eV) <sup>b</sup>	HOMO (eV) <sup>c</sup>	LUMO (eV) <sup>c</sup>	Band gap (eV) <sup>c</sup>	T <sub>m</sub> (°C)	T <sub>c</sub> (°C)
<b>S1</b>	455	708	5.7	-5.58	-3.67	1.81	257	210
<b>S2</b>	450	709	5.6	-5.53	-3.70	1.83	274	–
<b>S3</b>	477	719	5.8	-5.64	-3.80	1.84	258	240
<b>S4</b>	482	711	5.7	-5.61	-3.73	1.88	–	–

<sup>a</sup> Estimated from thin-film absorption profile.

<sup>b</sup> Estimated from ultraviolet photoemission spectroscopy.

<sup>c</sup> Estimated from cyclic voltammetry measurements with ferrocene as the internal reference.

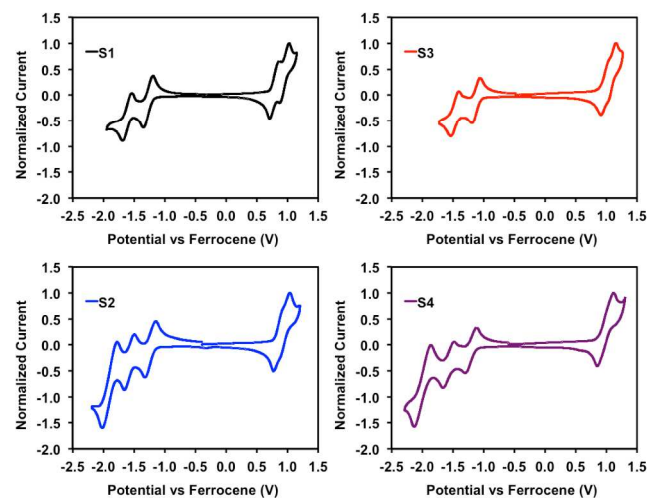
pertaining to solid-state self-assembly is manifested in the appearance of fine structure, which can be seen as a ripple in the profiles of **S1** and **S3** between 500 and 700 nm to suggest an ordered morphology. On the other hand, the profiles of **S2** and **S4** display smoother profiles, which is rationalized as a consequence of the phthalimide for naphthalimide substitution where it is expected that the materials will be less crystalline, and therefore represent a less ordered solid-state assembly.

### 3.2 Electrochemical Properties

The electrochemical properties of isoindigo derivatives **S1–4** were analyzed by cyclic voltammetry (CV), shown in Figure 4, and ultraviolet photoemission spectroscopy (UPS), shown in the Supporting Information. Individual cyclic voltammograms including the internal reference ferrocene can be found in the Supporting Information.

With **S1** as a point of comparison, the replacement of phthalimide with naphthalimide terminal acceptors (**S2**) is not accompanied by any significant changes to the oxidation or reduction potentials. On the other hand, the most evident change is seen in the reduction profile where naphthalimide extends the one-electron double reduction of phthalimide to a reversible triple reduction. Not dissimilar to PC<sub>61</sub>BM,<sup>70</sup> this suggests that **S2** has the capability to reversibly accept more than just one electron, beneficial for its role in separating charge in a photovoltaic cell.

The effect of the chlorination of isoindigo on the electrochemical properties of **S3** was evaluated in comparison to **S1** and displayed a similar voltammogram trace. In this case, there exists a shift in the oxidation and reduction potentials to more positive voltages, most prominent in the onset of oxidation. Consistent with the chlorination previously reported in the literature, this suggests that upon the substitution of chlo-



**Figure 4.** Reduction and oxidation traces of isoindigo non-fullerene acceptors **S1–4**. Cyclic voltammogram obtained in CH<sub>2</sub>Cl<sub>2</sub> solution under an N<sub>2</sub> atmosphere with a sweep rate of 100 mV/s.

rine for hydrogen, a stabilization of the energy levels occurs as a result of the integration of a more electronegative atom to the framework. As expected, **S4** benefits from both of these

structural modifications and exhibits both a reversible triple reduction and an overall stabilization of the energy levels.

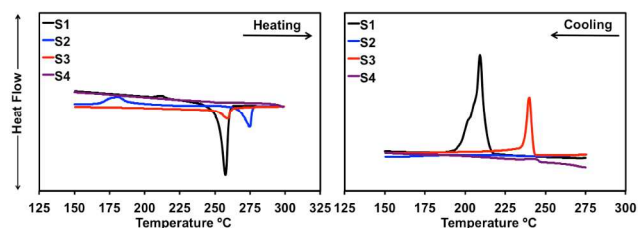
UPS measurements show that the ionization energy is slightly affected by each structural modification. In the thin film, **S1** has an ionization energy of approximately 5.7 eV, which is lowered to 5.6 eV following naphthalimide substitution (**S2**) and raised to 5.8 eV upon chlorination of the isoindigo core (**S3**). Following this trend, **S4** was shown to have the same ionization potential as **S1**, 5.7 eV, as the two structural modifications have an offsetting influence.

These small changes to the electrochemical properties of **S1–4** serves to highlight the ability of the synthetic chemist to systematically tune the energy levels of a given molecular system through intricate structural modification of a functional framework.

### 3.3 Thermal Properties

The thermal properties isoindigo derivatives **S1–4** were monitored by differential scanning calorimetry (DSC), the melting and crystallization transitions are shown in Figure 5. Individual DSC thermograms can be found in the Supporting Information.

Consistent with our previous work, the naphthalimide for phthalimide substitution was accompanied by a complete loss of the crystallization transition for **S2**, confirming our notion that naphthalimide substitution could significantly reduce the crystallinity of the small molecule acceptor **S1**. On the other hand, the influence of a chlorinated isoindigo core, **S3**, was not as pronounced. The thermogram displayed both melting and crystallization transitions, albeit with crystallization oc-



**Figure 5.** Thermal transitions of isoindigo non-fullerene acceptors **S1–4**. DSC thermograms obtained from scanning at 10 °C/min from 50 to 300 °C.

curing at a higher temperature than that observed for **S1**. The combination of naphthalimide and a chlorinated isoindigo core, **S4**, not only suppressed crystallization but also revealed a high thermal stability with no melting transition detected within the thermal range of our experiment.

### 3.4 Computational Analysis

The use of computational methods to investigate the theoretical optical and electronic properties of small molecules has been well-documented.<sup>71–73</sup> We have previously demonstrated how density functional theory (DFT) can be used to screen a variety of small molecules and highlight promising structures to pursue synthetically.<sup>74</sup> In this work the molecular geometries were optimized at the B3LYP/6-31G(d,p) level of theory with time-dependent (TD) calculations completed using TD-B3LYP/6-31G(d,p) to predict the optical and electronic properties of the molecules. For further details on our DFT meth-

ods we refer the reader to our previous work.<sup>74</sup> Summaries of the results are represented in Figure 6 with complete computational data included in the Supporting Information.

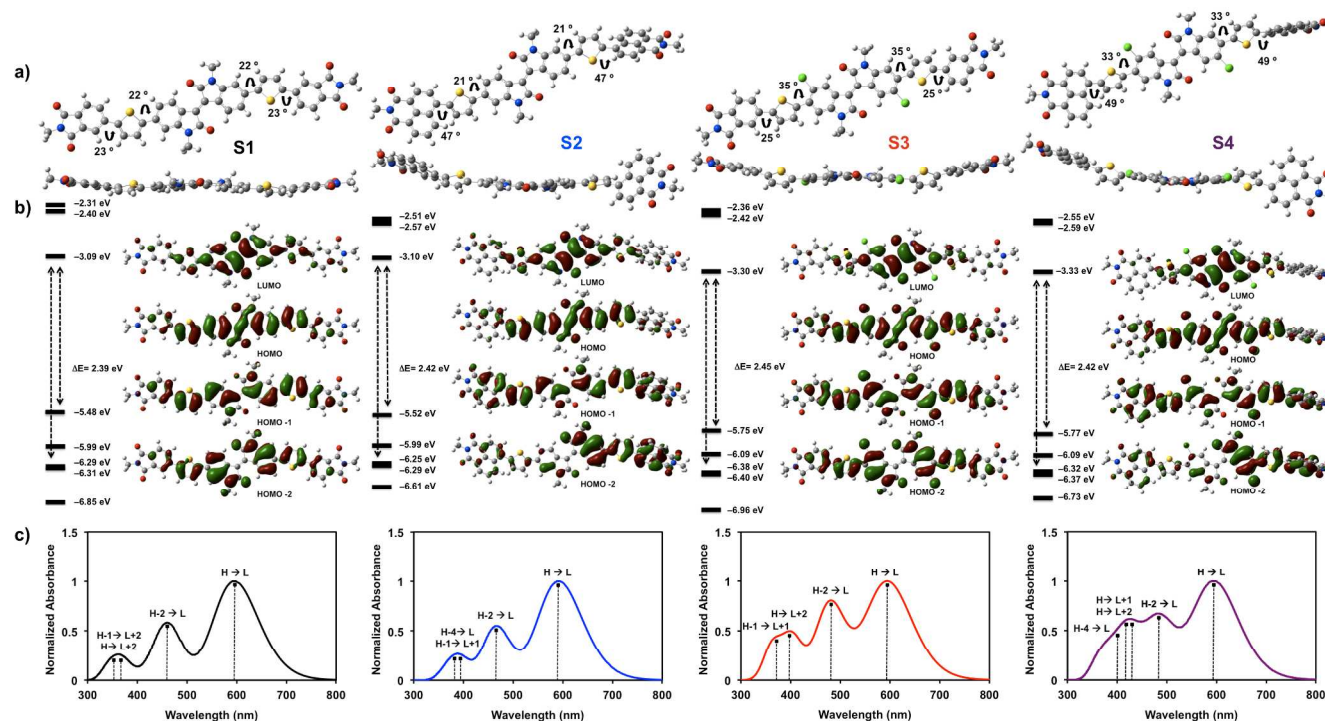
The optimized structures of **S1–4** (Figure 6a) depict the gradual increase in non-planarity with each modification. Considering the planar **S1** structure as a point of comparison, naphthalimide for phthalimide substitution (**S2**) was shown to induce a drastic 24° increase in the torsion angle between the thiophene bridging unit and the terminal acceptor (23° to 47°) as a result of the increased steric demand of the naphthalimide terminal acceptor. Similar deviations from planarity were observed for the inclusion of chlorine atoms to the isoindigo core (**S3**). In this case we focused on the torsion angle between the thiophene bridging unit and the isoindigo core, which results in a smaller, yet still significant, 13° increase (22° to 35°). This value is nearly identical to that reported for the chlorinated isoindigo polymer **PCI2T**,<sup>67</sup> where the increase in dihedral angle is attributed to the larger atomic radii of a chlorine atom in comparison to hydrogen. This reveals a unique method to alter both sterics and electronic configuration through the chlorination of organic materials. As expected, these torsion angles were conserved in the **S4** structure, which depicted a considerably non-planar optimized structure. Evidently, the increased steric demands of both the naphthalimide terminal acceptor and the integrated chlorine atoms have a pronounced influence on the backbone planarity of these isoindigo materials, which could account for differences in materials properties and performance.

Comparing the predicted energy levels of **S1–4** (Figure 6b) serves to highlight the influence of each structural evolution and the trends that exist. While DFT calculations do not accurately predict HOMO/LUMO energies, trends in these energies between closely related materials can be reliably computed. Introducing naphthalimide terminal acceptors (**S2**) has a negligible influence on the predicted LUMO energy level of

**S1** (3.09 eV versus 3.10 eV) but, as expected, incorporating chlorine atoms (**S3**) has a much greater effect on the LUMO energy level, bringing it down 0.21 eV to –3.30 eV. Again these influences are preserved in the **S4** structure, which depicts the most stabilized energy levels of all isoindigo derivatives at –3.33 eV.

Analysis of the predicted orbital transitions of **S1–4** (Figure 6c) can help reinforce our rationale for the differences observed in the UV/vis optical absorption profiles of the four isoindigo materials. The gradual decrease in intensity observed in each subsequent structural modification fuels the proposition that the decline in HOMO to LUMO transitions could be due to inefficient orbital mixing between the donor and acceptor components in the structure as a result of decreased coplanarity. The orbital surface depictions also support this conclusion; they display an increasingly localized LUMO orbital system, exposing the development of a truncated  $\pi$ -conjugated system as a result of the twist in the backbone. If we consider the observed UV/vis profiles, a small reduction in intensity was observed for naphthalimide substitution - this agrees with the predicted orbital depictions which show that even the planar original structure does not offer a delocalized  $\pi$ -system that extends to include the terminal acceptor. The reduced intensity is more notable with the introduction of chlorine to the structure. This relates to the disrupted co-planarity between the isoindigo core and the thiophene bridging unit, and the resultant highly localized  $\pi$ -system at the isoindigo core. This limited delocalization could be responsible for deterred HOMO to LUMO transitions and consequently reduced intensity.

Another transition of note is the increased contribution of the HOMO to LUMO +1 and LUMO +2 in the chlorinated derivatives. The LUMO +1 and LUMO +2 orbital surfaces are highly localized at the terminal acceptor units (see Supporting Information). This feature of the chlorinated derivatives is ra-



**Figure 6.** Summary of the computational analysis for **S1–S4** a) optimized structure b) predicted energy levels and orbital depictions and c) predicted orbital transitions.

tionalized to emerge as a result of the aforementioned encumbered HOMO to LUMO transitions, and thus increases the probability for orbital transition to these higher LUMO levels.

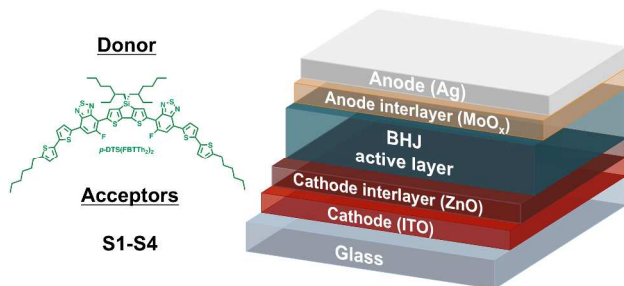
To summarize, the computational analysis of this series of isoindigo materials has proven to be crucial to the understand the structure-property relationships within this series of molecules. Both structural features, be it a chlorine atom at the isoindigo core or naphthalimide as the terminal acceptor, exert a significant influence on the backbone planarity of the structure. These alterations to the molecular geometry lead to significant differences in the predicted orbital transitions. When extended to the experimental absorption profiles, the computational analysis offers an explanation for the observed decrease in intensity of the low-energy absorption maxima where the inefficient orbital mixing resulting from a twisted structure perturbs this normally strong transition in planar molecules.

#### 4. DEVICE PERFORMANCE

While these  $\pi$ -conjugated isoindigo small molecules can be applicable to various organic electronic applications, our interest is primarily focused on the development of alternatives to fullerene acceptors in OPV. To explore the influence of structural evolution on the performance of **S1–4** as non-fullerene acceptors, proof-of-concept photovoltaic devices were fabricated in the same manner as our previous publications involving this framework.<sup>51</sup> Our choice of inverted architecture: ITO/ZnO/*p*-DTS(FBTTh<sub>2</sub>)<sub>2</sub>:SX/MoO<sub>3</sub>/Ag (Figure 7) is based on our investigation of **S1** where an inverted architecture demonstrated a 90 % increase in efficiency with the best cells reaching 1.0 % PCE.<sup>51</sup> The active layers were composed of 1:1 weight ratios and cast from 2.0 wt/v% solutions in chlorobenzene (CB) with 0.4 v/v% DIO additive. We maintained the same device fabrication procedure with regards to architecture and active layer casting conditions in order to assess how our two design criteria (reduced planarity and increased electron affinity) affected device performance. The performance of **S1–4** in OPV devices has been summarized in Table 2 with best cell current-voltage curves shown in Figure 8. Complete current-voltage curves for each isoindigo derivative can be found in the Supporting Information.

External quantum efficiency (EQE) spectra of devices with *p*-DTS(FBTTh<sub>2</sub>)<sub>2</sub>:SX active layer compositions displayed photocurrent generation beginning at approximately 750 nm and extending past 400 nm. The greatest efficiency was recorded in the low-energy region with major contribution from the donor material *p*-DTS(FBTTh<sub>2</sub>)<sub>2</sub>, with the major contribution from the acceptor materials **S1–4** being the broad spectral

coverage. EQE spectra and device parameters can be found in



**Figure 7.** Schematic of the inverted device architecture used in our experiments and the chemical structure of the donor small molecule *p*-DTS(FBTTh<sub>2</sub>)<sub>2</sub>

the Supporting Information.

Considering our previous results, devices were tested as-cast with no post-deposition annealing of the active layers. The performance of **S1** was consistent with the metrics attained in our previous report for its optimization in an inverted architecture. Naphthalimide for phthalimide substitution, **S2**, was anticipated to improve thin-film morphology and the resultant device performance based on reducing the tendency for crystallization observed in **S1**. Unfortunately, this did not manifest in devices, which instead showed a significant decrease in efficiency (0.38 % versus 1.01 %), with current density ( $J_{SC}$ ) roughly half of that reached for **S1** ( $-1.29 \text{ mA/cm}^2$  versus  $-2.60 \text{ mA/cm}^2$ ). The open circuit voltage ( $V_{OC}$ ) also exhibited a substantial decline (0.68 V versus 0.92 V). Based on these results, the issue that plagues device performance is likely related to the compatibility of the active layer materials, presumably poor molecular mixing, leading to inefficient charge separation and transport.

The chlorination of isoindigo, **S3**, slightly improved on the performance of **S2**, but remained well below the efficiency of **S1** (0.46 % versus 1.01 %).  $J_{SC}$  was again limited in comparison to **S1** ( $-1.23 \text{ mA/cm}^2$  versus  $-2.60 \text{ mA/cm}^2$ ), but displayed a similar  $V_{OC}$  (0.90 V versus 0.92 V). In the process of casting the active layer under our outlined conditions, it became evident that the difficulty in forming uniform thin-films plagued the performance of **S3** (see Supporting Information). When cast from chlorobenzene the active layer blend of *p*-DTS(FBTTh<sub>2</sub>)<sub>2</sub>:**S3** led to the formation of non-uniform thin-films with large cloudy patches, in many cases leading to shorted cells (images of thin-film devices shown in the Supporting Information). Due to the large substrate size (18 cells per substrate) the performance of **S3** was highly variable and

**Table 2.** Summary of the OPV device performance of non-fullerene acceptors **S1–S4**.

				% <sup>a</sup>
<b>S1</b>	0.91 (0.92)	-2.52 (-2.60)	0.41 (0.42)	0.93 (1.01)
<b>S2</b>	0.68 (0.68)	-1.15 (-1.29)	0.40 (0.44)	0.31 (0.38)
<b>S3</b>	0.84 (0.90)	-0.89 (-1.23)	0.44 (0.41)	0.33 (0.46)
<b>S4</b>	0.82 (0.87)	-2.94 (-3.39)	0.44 (0.42)	1.07 (1.24)
<b>S4*</b>	0.87	-5.27	0.42	1.93

<sup>a</sup> Average (Best PCE) Cell

\* Best performance cell to date



was dependent on the nature of the thin film at each individual cell, but even the best cell could not match **S1**.

The combination of a chlorinated isoindigo core and naphthalimide end caps finally culminated in a derivative that was better than the predecessor **S1**. The best performing cell of **S4** reached 1.24 % PCE, with an increase in  $J_{SC}$  ( $-3.39 \text{ mA/cm}^2$  versus  $2.60 \text{ mA/cm}^2$ ) and only a slight decrease in  $V_{OC}$  ( $0.87 \text{ V}$  versus  $0.92 \text{ V}$ , LUMO energies  $-3.73 \text{ eV}$  versus  $-3.67 \text{ eV}$ ). **S4** suffered from the same film-forming problems as **S3**, and led to highly variable performance metrics, which undoubtedly curbed our efficiencies.

AFM images were obtained to investigate the thin-film morphology of **S1–S4** OPV devices, the images can be found in the Supporting Information. Unfortunately the AFM imaging of the active layer devices did not bring any clarity to the situation, and displayed only subtle changes to the thin-film microstructure with no clear indication of any major differences.

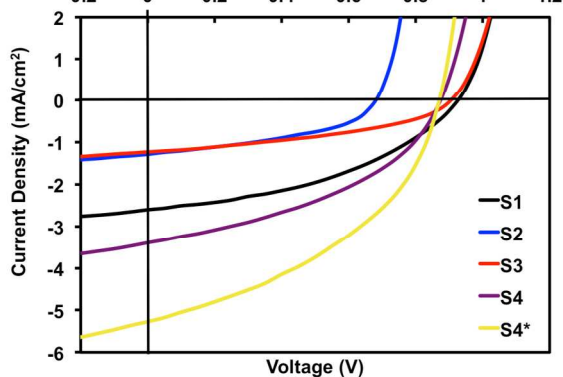
The difficulty associated with processing uniform thin-films is often overlooked but undoubtedly plays a crucial role in the overall performance of these materials. The performance of the chlorinated isoindigo derivatives **S3** and **S4** is visibly plagued by poor film-forming properties when cast from chlorobenzene and thus warranted further exploration. We considered several different processing solvents, *o*-dichlorobenzene did not wet the substrate, but uniform thin-films were manageable when cast from solutions of chloroform or 1:4 chloroform:chlorobenzene, although the resulting device performance was quite poor, demonstrating that despite the lack of uniformity, films cast from chlorobenzene generally led to the best device performance. Throughout the investigation of the different processing solvents we continued to look at casting from chlorobenzene. With numerous substrates to choose from, we selected those that visually appeared to be the most uniform for device incorporation. From this selection, our champion cell was able to reach 1.93 % (versus 1.01 % for **S1**) this current-voltage trace is shown in Figure 8 (**S4\***). This remarkable rise in performance is largely attributed to a substantial increase in  $J_{SC}$  ( $5.31 \text{ mA/cm}^2$  versus  $2.60 \text{ mA/cm}^2$ ) undoubtedly a result of a more favourable thin-film formation, and serves to highlight the potential for additional performance increases with a more favourable thin-film morphology.

Considering the inherent high  $V_{OC}$  of these isoindigo materials, the large increase in  $J_{SC}$  that accompanied our champion **S4** cell suggests that this material can adopt a more favourable thin-film morphology for device operations than any of its predecessors. It appears that the twisted nature of the **S4** backbone could be responsible for this improved performance, not unlike that which has been documented for some of the recent high-performance PDI acceptors discussed beforehand.

## 5. CONCLUSIONS

The importance of a versatile structure cannot be understated, this key design feature enabled the adaptability of our original isoindigo framework to evolve through synthetic modification and reach improved efficiencies.

The targeted structural modifications of **S1** were selected based on the deficiencies that most likely led to its restricted



OPV performance: the tendency to over-crystallize, and its moderate electron-deficient character. We designed three new materials to address these issues: (1) a naphthalimide terminal acceptors to reduce backbone planarity and disrupt crystallization. **Figure 8.** Current-voltage curves for the best performing cells of **S1–4**. **S4\*** denotes best performing cell to-date and serves to highlight the potential of this material for further optimization.

tion, (2) a chlorinated isoindigo core to increase electron-accepting character and (3) the combination of both these modifications into one framework.

The structural evolution of the isoindigo-based non-fullerene acceptor **S1** culminated in a new material that was greater than its predecessors. Although no single modification to the core or terminal acceptor outperformed the original, the combination of both structural alterations within the same small molecule led to a new derivative that was able to reach greater efficiencies, with the highest performance to date reaching 1.93 % PCE.

Despite the seemingly inherently poor film-forming properties of **S4** from chlorobenzene solutions, the potential to reach even higher performance metrics exists, but requires further investigation of the active layer processing conditions and optimization of device fabrication, which is an on-going interest in our research groups. Meanwhile, synthetically we are exploring other structural modifications of the **S4** framework to expand our understanding of isoindigo-based materials.

## 6. EXPERIMENTAL SECTION

**General Synthetic Details:** Preparations were carried out on a bench top or under an atmosphere of dry,  $O_2$ -free  $N_2$  via Schlenk line techniques and/or an Innovative Technology Inc.  $N_2$  atmosphere glove box. Purification by flash column chromatography was performed using a Biotage® Isolera flash system.

**Materials:** The isoindigo starting materials, 6-bromoisatin and 6-bromo-2-oxindole were purchased from Ontario Chemicals Inc. Heterogeneous catalyst SiliaCat® DPP-Pd was purchased from SiliCycle. All other materials were purchased from either Sigma-Aldrich or TCI America. The small molecule donor, *p*-DTS(FBTTh<sub>2</sub>)<sub>2</sub> was purchased from 1-Material.

**Precursor synthetic procedure:** Isoindigo precursors and **S1** were synthesized according to previously reported literature procedures.<sup>51</sup>

**Synthesis of 4-bromo-1-(ethylpropyl)naphthalimide (1EP-Naph):** The following synthesis was based on a modified literature procedure.<sup>75</sup> A 10-20 mL glass vial was loaded with 4-bromo-1,8-naphthalic anhydride (1.01 g, 3.65 mmol) and 1-ethylpropylamine (0.60 g, 6.88 mmol) in ethanol (10 mL). The vial was sealed with a silicone cap set to stir in an oil bath at 110 °C for 16 hours. The reaction mixture was subsequently removed from heat and precipitated into vigorously stirring H<sub>2</sub>O (400 mL). The product was isolated by vacuum filtration, recrystallized from iPrOH and dried in *vacuo* to yield an off-white solid (0.98 g, 2.83 mmol, 78 % yield).

**<sup>1</sup>H NMR (CDCl<sub>3</sub>):** δ 8.65 (d, 1H, <sup>1</sup>J<sub>H-H</sub> = 7 Hz), 8.57 (d, 1H, <sup>1</sup>J<sub>H-H</sub> = 9 Hz), 8.41 (d, 1H, <sup>1</sup>J<sub>H-H</sub> = 8 Hz), 8.05 (d, 1H, <sup>1</sup>J<sub>H-H</sub> = 8 Hz), 7.86 (d, 1H, <sup>1</sup>J<sub>H-H</sub> = 7 Hz, <sup>2</sup>J<sub>H-H</sub> = 1 Hz), 5.04 (m, 1H), 2.23 (m, 2H), 1.92 (m, 2H), 0.91 (t, 6H).

**<sup>13</sup>C NMR (CDCl<sub>3</sub>):** δ 132.9, 132.0, 131.2, 131.1, 130.5, 129.9, 129.2, 128.1, 57.6, 25.0, 11.3. Theoretical: 15 peaks, Experimental: 11 peaks.

**MS (APCI-TOF):** *m/z* 346.0. *calcd.* 346.2.

**Synthesis of 6,6'-bis(thiophen-5,2-diyl)bis(2-(1-ethylpropyl)naphthalimide)-1,1'-di(octyl)isoindigo (S2):** A 2-5 mL glass vial was loaded bench top with 6,6'-di(thiophen-2-yl)-1,1'-di(octyl)isoindigo (0.25 g, 0.38 mmol), 4-bromo-1-(ethylpropyl)naphthalimide (0.32 g, 0.92 mmol), potassium carbonate (0.13 g, 0.94 mmol), SiliaCat® DPP-Pd (0.08 g, 5 mol %), pivalic acid (0.02 g, 0.2 mmol) and DMA (3 mL). The purple reaction mixture was sealed with a silicone cap and stirred in an oil bath at 80 °C for 16 hours. The resultant black reaction mixture was dissolved in CH<sub>2</sub>Cl<sub>2</sub> (100 mL) and filtered through silica-gel to isolate from the heterogeneous catalyst with thorough washing with dichloromethane (300 mL). The filtrate was concentrated under reduced pressure and was liquid loaded on a SiliaSep™ 25g cartridge and purified by flash column chromatography with dichloromethane as the eluent. The final product can be isolated by filtration from MeOH, washing with hot iPrOH to yield a purple-black solid (0.28 g, 0.24 mmol, 63 % yield).

**<sup>1</sup>H NMR (CDCl<sub>3</sub>):** δ 9.27 (d, 2H, <sup>1</sup>J<sub>H-H</sub> = 8 Hz), 8.68 (m, 6H), 7.89 (d, 2H, <sup>1</sup>J<sub>H-H</sub> = 8 Hz), 7.81 (m, 2H), 7.57 (d, 2H, <sup>1</sup>J<sub>H-H</sub> = 4 Hz), 7.38 (d, ov, 2H, <sup>1</sup>J<sub>H-H</sub> = 4 Hz), 7.38 (d, ov, 2H, <sup>1</sup>J<sub>H-H</sub> = 8 Hz), 7.05 (s, 2H), 5.08 (m, 2H), 3.87 (t, 4H), 2.28 (m, 4H), 1.94 (m, 4H), 1.79 (m, 4H), 1.46–1.28 (m, 20H), 0.93 (t, 12H), 0.86 (t, 6H).

**<sup>13</sup>C NMR (CDCl<sub>3</sub>):** δ 168.2, 146.1, 145.5, 140.5, 138.2, 137.3, 132.2, 131.8, 130.6, 130.1, 129.7, 129.1, 128.5, 127.4, 125.1, 121.6, 119.4, 104.7, 57.5, 40.2, 31.8, 29.3, 29.2, 27.6, 27.1, 25.1, 22.6, 14.1, 11.3. Theoretical: 35 peaks, Experimental: 29 peaks.

**MS (APCI-TOF):** *m/z* 1181.5. *calcd.* 1181.6.

**EA:** Calculated for C<sub>74</sub>H<sub>76</sub>N<sub>4</sub>O<sub>6</sub>S<sub>2</sub>: C, 75.2; H, 6.5; N, 4.7. Found: C, 75.1; H, 6.3; N, 4.7.

**Synthesis of 5,5'-dichloro-6,6'-dibromo-1,1'-di(octyl)isoindigo (Oct-IICl<sub>2</sub>Br<sub>2</sub>):** The following synthesis was based on a literature procedure.<sup>67</sup> A 10-20 mL glass vial was loaded bench top with 6,6'-dibromo-1,1'-di(octyl)isoindigo (0.60 g, 0.93 mmol) and *N*-

chlorosuccinimide (0.25 g, 1.86 mmol). The contents were solubilized in a 1:1 mixture of DMF (7 mL) and CHCl<sub>3</sub> (7 mL), purged with N<sub>2</sub> and sealed with a silicone cap. The reaction mixture was heated at 70 °C for 16 hours and subsequently filtered through silica-gel, washing with CH<sub>2</sub>Cl<sub>2</sub> (100 mL) and concentrated under reduced pressure. The dark red solid was slurried in H<sub>2</sub>O, and isolated by filtration, washing thoroughly with MeOH. The isolated product was further purified by dissolving in a small amount of CH<sub>2</sub>Cl<sub>2</sub> (5 mL), precipitating into a vigorously stirring solution of pentanes (300 mL) and collected by filtration to yield a dark red solid (0.58 g, 0.81 mmol, 87 % yield).

**<sup>1</sup>H NMR CDCl<sub>3</sub>:** δ 9.42 (s, 2H), 7.02 (s, 2H), 3.73 (t, 4H), 1.68 (m, 4H), 1.36–1.28 (m, 20H), 0.89 (t, 6H).

**<sup>13</sup>C NMR CDCl<sub>3</sub>:** δ 167.2, 144.0, 132.6, 131.3, 127.7, 126.7, 121.5, 112.7, 40.4, 31.7, 29.2, 29.1, 27.3, 26.9, 22.6, 14.1. Expected: 16 peaks Experimental: 16 peaks

**MS (APCI-TOF):** *m/z* 713.1. *calcd.* 713.4.

**Synthesis of 5,5'-dichloro-6,6'-(dithiophen-2-yl)-1,1'-di(octyl)isoindigo (Oct-IICl<sub>2</sub>Th<sub>2</sub>):** A 10-20 mL glass vial was loaded bench top with 5,5'-dichloro-6,6'-dibromo-1,1'-di(octyl)isoindigo (0.54 g, 0.76 mmol), 2-tributylstannyl thiophene (0.62 g, 1.67 mmol), SiliaCat® DPP-Pd (0.15 g, 5 mol%) and reagent grade toluene (10 mL). The dark red reaction mixture was sealed with a silicone cap and heated in a Biotage® Initiator+ microwave reactor for 5 minutes at 100 °C followed by 15 minutes at 170 °C under 5 bar of pressure. Following microwave irradiation, the dark purple-red reaction mixture was poured into CH<sub>2</sub>Cl<sub>2</sub> (200 mL) and set to stir with a 5:1 mixture of silica:K<sub>2</sub>CO<sub>3</sub> to remove residual tin impurities. The solution was purified by filtering through silica-gel and the filtrate was concentrated under reduced pressure to yield a dark purple solid. The product was collected by filtration, washing with pentanes. (0.48 g, 0.67 mmol, 88 % yield).

**<sup>1</sup>H NMR CDCl<sub>3</sub>:** δ 9.43 (s, 2H), 7.54 (d, 2H, <sup>1</sup>J<sub>H-H</sub> = 3Hz), 7.47 (d, 2H, <sup>1</sup>J<sub>H-H</sub> = 3 Hz), 7.15 (dd, 2H, <sup>1</sup>J<sub>H-H</sub> = 4 Hz, <sup>2</sup>J<sub>H-H</sub> = 1 Hz), 6.92 (s, 2H), 3.79 (t, 4H), 1.72 (m, 4H), 1.37–1.28 (m, 20H), 0.87 (t, 6H).

**<sup>13</sup>C NMR CDCl<sub>3</sub>:** δ 167.5, 143.6, 140.2, 136.3, 132.3, 132.1, 128.7, 127.4, 127.3, 125.2, 121.5, 109.5, 40.2, 31.8, 29.2, 29.2, 27.4, 27.0, 22.6, 14.1. Expected: 20 peaks Experimental: 20 peaks

**MS (APCI-TOF):** *m/z* 719.2. *calcd.* 719.8.

**Synthesis of 5,5'-dichloro-6,6'-(thiophen-5,2-diyl)bis(2-(1-ethylpropyl) phthalimide)-1,1'-di(octyl)isoindigo (S3):** A 2-5 mL glass vial was loaded bench top with 5,5'-dichloro-6,6'-di(thiophen-2-yl)-1,1'-di(octyl)isoindigo (0.25 g, 0.35 mmol), 4-bromo-1-(ethylpropyl)phthalimide (0.25 g, 0.84 mmol), potassium carbonate (0.11 g, 0.80 mmol), SiliaCat® DPP-Pd (0.09 g, 5 mol %), pivalic acid (0.02 g, 0.2 mmol) and DMA (4 mL). The purple reaction mixture was sealed with a silicone cap and stirred in an oil bath at 80 °C for 16 hours. The resultant black reaction mixture was dissolved in CH<sub>2</sub>Cl<sub>2</sub> (100 mL) and filtered through silica-gel to isolate from the heterogeneous catalyst with thorough washing with dichloromethane (300 mL). The filtrate was concentrated under re-

duced pressure and was liquid loaded on a SiliaSep™ 25g cartridge and purified by flash column chromatography with dichloromethane as the eluent. The final product can be isolated by filtration from MeOH, washing with hot iPrOH to yield a purple-black solid (0.23 g, 0.20 mmol, 57 % yield).

**<sup>1</sup>H NMR (CDCl<sub>3</sub>):** δ 9.45 (s, 2H), 8.04 (s, 2H), 7.91 (d, 2H, <sup>1</sup>J<sub>H-H</sub> = 8 Hz), 7.57 (d, 2H, <sup>1</sup>J<sub>H-H</sub> = 4 Hz), 7.46 (d, 2H, <sup>1</sup>J<sub>H-H</sub> = 4 Hz), 6.92 (s, 2H), 4.07 (m, 2H), 3.85 (t, 4H), 2.09 (m, 4H), 1.81 (m, 8H), 1.43–1.30 (m, 20H), 0.91 (t, 18H).

**<sup>13</sup>C NMR (CDCl<sub>3</sub>):** δ 168.4, 168.3, 167.4, 143.7, 143.6, 141.6, 139.5, 135.2, 133.0, 132.4, 132.1, 130.4, 130.2, 130.0, 125.4, 124.8, 123.8, 121.9, 119.8, 108.6, 55.8, 40.3, 31.8, 29.3, 29.2, 27.5, 27.0, 25.3, 22.6, 14.1, 11.2. Theoretical: 31 peaks, Experimental: 31 peaks.

**MS (APCI-TOF):** *m/z* 1149.4. *calcd.* 1150.3.

**EA:** Calculated for C<sub>66</sub>H<sub>70</sub>Cl<sub>2</sub>N<sub>4</sub>O<sub>6</sub>S<sub>2</sub>: C, 68.9; H, 6.1; N, 4.9. Found: C, 69.0; H, 5.9; N, 4.9.

**Synthesis of 5,5-dichloro-6,6'-bis(thiophen-5,2-diyl)bis(2-(1-ethylpropyl)naphthalimide)-1,1'-di(octyl)isoindigo (S4):** A 2-5 mL glass vial was loaded bench top with 5,5'-dichloro-6,6'-di(thiophen-2-yl)-1,1'-di(octyl)isoindigo (0.20 g, 0.28 mmol), 4-bromo-1-(ethylpropyl)naphthalimide (0.26 g, 0.75 mmol), potassium carbonate (0.11 g, 0.80 mmol), SiliaCat® DPP-Pd (0.07 g, 5 mol %), pivalic acid (0.02 g, 0.2 mmol) and DMA (4 mL). The purple reaction mixture was sealed with a silicone cap and stirred in an oil bath at 80 °C for 16 hours. The resultant black reaction mixture was dissolved in CH<sub>2</sub>Cl<sub>2</sub> (100 mL) and filtered through silica-gel to isolate from the heterogeneous catalyst with thorough washing with dichloromethane (300 mL). The filtrate was concentrated under reduced pressure and was liquid loaded on a SiliaSep™ 25g cartridge and purified by flash column chromatography with dichloromethane as the eluent. The final product can be isolated by filtration from MeOH, washing with hot iPrOH to yield a purple-black solid (0.22 g, 0.18 mmol, 64 % yield).

**<sup>1</sup>H NMR (CDCl<sub>3</sub>):** δ 9.53 (s, 2H), 8.67 (m, 6H), 7.91 (d, 2H, <sup>1</sup>J<sub>H-H</sub> = 8 Hz), 7.81 (m, 2H), 7.71 (d, 2H, <sup>1</sup>J<sub>H-H</sub> = 4 Hz), 7.42 (d, 2H, <sup>1</sup>J<sub>H-H</sub> = 4 Hz), 7.05 (s, 2H), 5.09 (m, 2H), 3.87 (m, 4H), 2.27 (m, 4H), 1.95 (m, 4H), 1.79 (m, 4H), 1.42–1.29 (m, 20H), 0.94 (t, 12H), 0.87 (t, 6H).

**<sup>13</sup>C NMR (CDCl<sub>3</sub>):** δ 167.5, 143.8, 142.2, 141.8, 138.0, 135.6, 132.4, 131.8, 130.7, 129.7, 129.4, 129.1, 128.6, 127.4, 125.2, 121.9, 109.1, 99.0, 57.5, 40.3, 31.8, 29.3, 29.2, 27.5, 27.0, 25.0, 22.6, 14.0, 11.3. Theoretical: 35 peaks, Experimental: 29 peaks.

**MS (APCI-TOF):** *m/z* 1249.4. *calcd.* 1250.4.

**EA:** Calculated for C<sub>74</sub>H<sub>74</sub>Cl<sub>2</sub>N<sub>4</sub>O<sub>6</sub>S<sub>2</sub>: C, 71.1; H, 6.0; N, 4.5. Found: C, 70.9; H, 5.8; N, 4.5.

**Device Fabrication:** BHJ OSC devices were fabricated using commercially available ITO-coated glass substrates (Lumtec), cleaned by sequentially ultrasonically detergent and deionized water, acetone, and ethanol, and followed by exposure to UV/ozone. ZnO was deposited as a sol-gel precursor solution, following the method of Sun *et al.*,<sup>76</sup> 500 mg of zinc acetate dihydrate were dissolved in 5 mL of 2-methoxyethanol with

142 μL of ethanolamine and stirred overnight at room temperature in air. The room temperature solution was spin-cast unfiltered at a speed of 5000 RPM, then annealed at 200 °C in air for 1 hour, for an expected thickness of 30 nm. Active layers solutions of *p*-DTS(FBTTh<sub>2</sub>)<sub>2</sub> and **S1–4** were prepared with a total concentration of 20 mg/mL in chlorobenzene with 0.4 v/v% 1,8-diiodooctane (TCI Chemicals) additive. Solutions were heated to 80 °C and stirred overnight prior to hot-casting through a PTFE filter and spinning at a speed of 1000 RPM. Top contacts of 5.5 nm of molybdenum oxide followed by 110 nm of silver were thermally deposited under vacuum. The active areas of resulting devices were 0.04 cm<sup>2</sup>. Completed devices were then transferred directly into an Ar glovebox and tested using a xenon short arc lamp fully reflective solar simulator (Sciencetech SS-0.5k). Light from the simulator was passed through a neutral density filter to match AM1.5G illumination with a power density of 100 mW/cm<sup>2</sup> (calibrated with a standardized silicon photodetector immediately prior to use).

## ASSOCIATED CONTENT

**Supporting Information.** Includes complete experimental procedures, characterization data, DFT analysis, and device performance data. This material is available free of charge via the Internet at <http://pubs.acs.org>.

## AUTHOR INFORMATION

### Corresponding Author

\*E-mail: [gregory.welch@ucalgary.ca](mailto:gregory.welch@ucalgary.ca)

### Present Addresses

†Department of Chemistry, University of Calgary, 2500 University Drive N.W., Calgary, Alberta, T2N 1N4.

### Author Contributions

All authors have given approval to the final version of the manuscript.

### Funding Sources

GCW acknowledges NSERC Discovery Program, Canada Research Chairs, and the Canadian Foundation for Innovation. IGH acknowledges the NSERC Discovery Program, NSERC Photovoltaics Innovation Network and the Canadian Foundation for Innovation. JMT acknowledges NSERC CREATE DREAMS for financial support. JPS acknowledges Killam Trusts, NSERC and NSERC CREATE DREAMS for financial support.

## ACKNOWLEDGEMENTS

We thank Abby Payne, Andrew Namespetra and Arthur Hendsbee for helpful discussions.

## REFERENCES

- (1) Darling, S. B.; You, F. *RSC Adv.* **2013**, *3* (39), 17633.
- (2) Forrest, S. R. *Nature* **2004**, *428* (6986), 911.
- (3) Kaltenbrunner, M.; White, M. S.; Głowacki, E. D.; Sekitani, T.; Someya, T.; Saricicfci, N. S.; Bauer, S. *Nat. Commun.* **2012**, *3*, 770.
- (4) Kippelen, B.; Brédas, J.-L. *Energy Environ. Sci.* **2009**, *2* (3), 251.
- (5) Li, G.; Zhu, R.; Yang, Y. *Nat. Photonics* **2012**, *6* (3), 153.

- (6) Søndergaard, R.; Hösel, M.; Angmo, D.; Larsen-Olsen, T. T.; Krebs, F. C. *Mater. Today* **2012**, *15* (1–2), 36.
- (7) Su, Y.-W.; Lan, S.-C.; Wei, K.-H. *Mater. Today* **2012**, *15* (12), 554.
- (8) Dennler, G.; Scharber, M. C.; Brabec, C. J. *Adv. Mater.* **2009**, *21* (13), 1323.
- (9) Gendron, D.; Leclerc, M. *Energy Environ. Sci.* **2011**, *4* (4), 1225.
- (10) Duan, C.; Huang, F.; Cao, Y. *J. Mater. Chem.* **2012**, *22* (21), 10416.
- (11) Roncali, J.; Leriche, P.; Blanchard, P. *Adv. Mater.* **2014**, *26* (23), 3821.
- (12) Roncali, J. *Acc. Chem. Res.* **2009**, *42* (11), 1719.
- (13) Welch, G. C.; Bakus, R. C.; Teat, S. J.; Bazan, G. C. *J. Am. Chem. Soc.* **2013**, *135* (6), 2298.
- (14) Henson, Z. B.; Welch, G. C.; van der Poll, T.; Bazan, G. C. *J. Am. Chem. Soc.* **2012**, *134* (8), 3766.
- (15) Takacs, C. J.; Sun, Y.; Welch, G. C.; Perez, L. A.; Liu, X.; Wen, W.; Bazan, G. C.; Heeger, A. J. *J. Am. Chem. Soc.* **2012**, *134* (40), 16597.
- (16) Coughlin, J. E.; Henson, Z. B.; Welch, G. C.; Bazan, G. C. *Acc. Chem. Res.* **2014**, *47* (1), 257.
- (17) Zhang, F.; Wu, D.; Xu, Y.; Feng, X. *J. Mater. Chem.* **2011**, *21* (44), 17590.
- (18) Walker, B.; Kim, C.; Nguyen, T.-Q. *Chem. Mater.* **2011**, *23* (3), 470.
- (19) Lin, Y.; Li, Y.; Zhan, X. *Chem. Soc. Rev.* **2012**, *41* (11), 4245.
- (20) Chen, Y.; Wan, X.; Long, G. *Acc. Chem. Res.* **2013**, *46* (11), 2645.
- (21) Sonar, P.; Lim, J. P. F.; Chan, K. L. *Energy Environ. Sci.* **2011**, *4* (5), 1558.
- (22) Lin, Y.; Zhang, Z.-G.; Bai, H.; Wang, J.; Yao, Y.; Li, Y.; Zhu, D.; Zhan, X. *Energy Environ. Sci.* **2014**, *8*, 610.
- (23) Zhang, X.; Zhan, C.; Yao, J. *Chem. Mater.* **2014**, *27*, 166.
- (24) Zhong, Y.; Trinh, M. T.; Chen, R.; Wang, W.; Khlyabich, P. P.; Kumar, B.; Xu, Q.; Nam, C.-Y.; Sfeir, M. Y.; Black, C.; Steigerwald, M. L.; Loo, Y.-L.; Xiao, S.; Ng, F.; Zhu, X.-Y.; Nuckolls, C. *J. Am. Chem. Soc.* **2014**, *136* (43), 15215.
- (25) Lin, Y.; Wang, J.; Zhang, Z.-G.; Bai, H.; Li, Y.; Zhu, D.; Zhan, X. *Adv. Mater.* **2015**, *27*, 1170.
- (26) Zhao, J.; Li, Y.; Lin, H.; Liu, Y.; Jiang, K.; Mu, C.; Ma, T.; Lai, J. Y. L.; Hu, H.; Yu, D.; Yan, H. *Energy Environ. Sci.* **2015**, *8*, 520.
- (27) McAfee, S. M.; Topple, J. M.; Hill, I. G.; Welch, G. C. *J. Mater. Chem. A* **2015**, *3*, 16393.
- (28) Eftaiha, A. F.; Sun, J.-P.; Hill, I. G.; Welch, G. C. *J. Mater. Chem. A* **2013**, *2* (5), 1201.
- (29) Lin, Y.; Zhan, X. *Mater. Horiz.* **2014**, *1* (5), 470.
- (30) Kozma, E.; Catellani, M. *Dyes Pigments* **2013**, *98* (1), 160.
- (31) Anthony, J. E. *Chem. Mater.* **2011**, *23* (3), 583.
- (32) Chochos, C. L.; Tagmatarchis, N.; Gregoriou, V. G. *RSC Adv.* **2013**, *3* (20), 7160.
- (33) Hudhomme, P. *EPJ Photovolt.* **2013**, *4*, 40401.
- (34) Schmidt-Mende, L.; Fechtenkötter, A.; Müllen, K.; Moons, E.; Friend, R. H.; MacKenzie, J. D. *Science* **2001**, *293* (5532), 1119.
- (35) Schön, J. H.; Kloc, C.; Batlogg, B. *Appl. Phys. Lett.* **2000**, *77* (23), 3776.
- (36) Struijk, C. W.; Sieval, A. B.; Dakhorst, J. E. J.; van Dijk, M.; Kimkes, P.; Koehorst, R. B. M.; Donker, H.; Schaafsma, T. J.; Picken, S. J.; van de Craats, A. M.; Warman, J. M.; Zuilhof, H.; Sudhölter, E. J. R. *J. Am. Chem. Soc.* **2000**, *122* (45), 11057.
- (37) Li, J.; Dierschke, F.; Wu, J.; Grimsdale, A. C.; Müllen, K. *J. Mater. Chem.* **2006**, *16* (1), 96.
- (38) Chen, Z.; Lohr, A.; Saha-Möllner, C. R.; Würthner, F. *Chem. Soc. Rev.* **2009**, *38* (2), 564.
- (39) Ye, T.; Singh, R.; Butt, H.-J.; Floudas, G.; Keivanidis, P. E. *ACS Appl. Mater. Interfaces* **2013**, *5* (22), 11844.
- (40) Sharenko, A.; Gehrig, D.; Laquai, F.; Nguyen, T.-Q. *Chem. Mater.* **2014**, *26* (14), 4109.
- (41) Singh, R.; Aluicio-Sarduy, E.; Kan, Z.; Ye, T.; MacKenzie, R. C. I.; Keivanidis, P. E. *J. Mater. Chem. A* **2014**, *2* (35), 14348.
- (42) Lin, Y.; Wang, Y.; Wang, J.; Hou, J.; Li, Y.; Zhu, D.; Zhan, X. *Adv. Mater.* **2014**, *26* (30), 5137.
- (43) Liu, Y.; Mu, C.; Jiang, K.; Zhao, J.; Li, Y.; Zhang, L.; Li, Z.; Lai, J. Y. L.; Hu, H.; Ma, T.; Hu, R.; Yu, D.; Huang, X.; Tang, B. Z.; Yan, H. *Adv. Mater.* **2014**, *27*, 1015.
- (44) Hartnett, P. E.; Timalisina, A.; Matte, H. S. S. R.; Zhou, N.; Guo, X.; Zhao, W.; Facchetti, A.; Chang, R. P. H.; Hersam, M. C.; Wasielewski, M. R.; Marks, T. N. *J. Am. Chem. Soc.* **2014**, *136* (46), 16345.
- (45) Holliday, S.; Ashraf, R. S.; Nielsen, C. B.; Kirkus, M.; Röhr, J. A.; Tan, C.-H.; Collado-Fregoso, E.; Knall, A.-C.; Durrant, J. R.; Nelson, J.; McCulloch, I. *J. Am. Chem. Soc.* **2014**, *137* (2), 898.
- (46) Li, H.; Earmme, T.; Ren, G.; Saeki, A.; Yoshikawa, S.; Murari, N. M.; Subramaniyan, S.; Crane, M. J.; Seki, S.; Jenekhe, S. A. *J. Am. Chem. Soc.* **2014**, *136* (41), 14589.
- (47) Bloking, J. T.; Giovenzana, T.; Higgs, A. T.; Ponec, A. J.; Hoke, E. T.; Vandewal, K.; Ko, S.; Bao, Z.; Sellinger, A.; McGehee, M. D. *Adv. Energy Mater.* **2014**, *4* (12), 1301426(1).
- (48) Shi, H.; Fu, W.; Shi, M.; Ling, J.; Chen, H. *J. Mater. Chem. A* **2015**, *3*, 1902.
- (49) Kim, Y.; Song, C. E.; Moon, S.-J.; Lim, E. *Chem. Commun.* **2014**, *50* (60), 8235.
- (50) Bai, H.; Wang, Y.; Cheng, P.; Wang, J.; Wu, Y.; Hou, J.; Zhan, X. *J. Mater. Chem. A* **2014**, *3*, 1910.
- (51) McAfee, S. M.; Topple, J. M.; Payne, A.-J.; Sun, J.-P.; Hill, I. G.; Welch, G. C. *ChemPhysChem* **2015**, *16*, 1190.
- (52) Liao, H.-C.; Ho, C.-C.; Chang, C.-Y.; Jao, M.-H.; Darling, S. B.; Su, W.-F. *Mater. Today* **2013**, *16* (9), 326.
- (53) Hoven, C. V.; Dang, X.-D.; Coffin, R. C.; Peet, J.; Nguyen, T.-Q.; Bazan, G. C. *Adv. Mater.* **2010**, *22* (8), E63.
- (54) Lai, T.-H.; Tsang, S.-W.; Manders, J. R.; Chen, S.; So, F. *Mater. Today* **2013**, *16* (11), 424.

- (55) Choi, H.; Kim, H.-B.; Ko, S.-J.; Kim, J. Y.; Heeger, A. J. *Adv. Mater.* **2015**, *27* (5), 892.
- (56) Jo, J.; Pouliot, J.-R.; Wynands, D.; Collins, S. D.; Kim, J. Y.; Nguyen, T. L.; Woo, H. Y.; Sun, Y.; Leclerc, M.; Heeger, A. J. *Adv. Mater.* **2013**, *25* (34), 4783.
- (57) Kwon, O. K.; Park, J.-H.; Kim, D. W.; Park, S. K.; Park, S. Y. *Adv. Mater.* **2015**, *27*, 1951.
- (58) Kwon, O. K.; Park, J.-H.; Park, S. K.; Park, S. Y. *Adv. Energy Mater.* **2015**, *5* (1), 1400929(1).
- (59) Zhang, X.; Zhang, J.; Lu, H.; Wu, J.; Li, G.; Li, C.; Li, S.; Bo, Z. *J. Mater. Chem. C* **2015**.
- (60) Hendsbee, A. D.; Sun, J.-P.; Rutledge, L. R.; Hill, I. G.; Welch, G. C. *J. Mater. Chem. A* **2014**, *2* (12), 4198.
- (61) McAfee, S. M.; McCahill, J. S. J.; Macaulay, C. M.; Hendsbee, A. D.; Welch, G. C. *RSC Adv.* **2015**, *5* (33), 26097.
- (62) Areephong, J.; Hendsbee, A. D.; Welch, G. C. *New J. Chem.* **2015**.
- (63) Hendsbee, A. D.; McAfee, S. M.; Sun, J.-P.; McCormick, T. M.; Hill, I. G.; Welch, G. C. *J. Mater. Chem. C* **2015**, *3* (34), 8904.
- (64) Deng, Y.; Li, W.; Liu, L.; Tian, H.; Xie, Z.; Geng, Y.; Wang, F. *Energy Environ. Sci.* **2015**, *8* (2), 585.
- (65) Yang, Y.; Wu, R.; Wang, X.; Xu, X.; Li, Z.; Li, K.; Peng, Q. *Chem. Commun.* **2013**, *50* (4), 439.
- (66) Lei, T.; Dou, J.-H.; Ma, Z.-J.; Yao, C.-H.; Liu, C.-J.; Wang, J.-Y.; Pei, J. *J. Am. Chem. Soc.* **2012**, *134* (49), 20025.
- (67) Lei, T.; Dou, J.-H.; Ma, Z.-J.; Liu, C.-J.; Wang, J.-Y.; Pei, J. *Chem. Sci.* **2013**, *4* (6), 2447.
- (68) Pappenfus, T. M.; Schliep, K. B.; Dissanayake, A.; Ludden, T.; Nieto-Ortega, B.; López Navarrete, J. T.; Ruiz Delgado, M. C.; Casado, J. *J. Chem. Educ.* **2012**, *89* (11), 1461.
- (69) Sonar, P.; Williams, E. L.; Singh, S. P.; Manzhos, S.; Dodabalapur, A. *Phys. Chem. Chem. Phys.* **2013**, *15* (40), 17064.
- (70) Yoo, S. H.; Kum, J. M.; Cho, S. O. *Nanoscale Res. Lett.* **2011**, *6* (1), 545.
- (71) McCormick, T. M.; Bridges, C. R.; Carrera, E. I.; DiCarmine, P. M.; Gibson, G. L.; Hollinger, J.; Kozycz, L. M.; Seferos, D. S. *Macromolecules* **2013**, *46* (10), 3879.
- (72) Duan, Y.-A.; Geng, Y.; Li, H.-B.; Jin, J.-L.; Wu, Y.; Su, Z.-M. *J. Comput. Chem.* **2013**, *34* (19), 1611.
- (73) Pandey, L.; Risko, C.; Norton, J. E.; Brédas, J.-L. *Macromolecules* **2012**, *45* (16), 6405.
- (74) Rutledge, L. R.; McAfee, S. M.; Welch, G. C. *J. Phys. Chem. A* **2014**, *118*, 7939.
- (75) Jiang, W.; Tang, J.; Qi, Q.; Wu, W.; Sun, Y.; Fu, D. *Dyes Pigments* **2009**, *80* (1), 11.
- (76) Sun, Y.; Seo, J. H.; Takacs, C. J.; Seifert, J.; Heeger, A. J. *Adv. Mater.* **2011**, *23* (14), 1679.

Insert Table of Contents artwork here

