

# Polymer Chemistry

Accepted Manuscript



This is an *Accepted Manuscript*, which has been through the Royal Society of Chemistry peer review process and has been accepted for publication.

*Accepted Manuscripts* are published online shortly after acceptance, before technical editing, formatting and proof reading. Using this free service, authors can make their results available to the community, in citable form, before we publish the edited article. We will replace this *Accepted Manuscript* with the edited and formatted *Advance Article* as soon as it is available.

You can find more information about *Accepted Manuscripts* in the [Information for Authors](#).

Please note that technical editing may introduce minor changes to the text and/or graphics, which may alter content. The journal's standard [Terms & Conditions](#) and the [Ethical guidelines](#) still apply. In no event shall the Royal Society of Chemistry be held responsible for any errors or omissions in this *Accepted Manuscript* or any consequences arising from the use of any information it contains.

# Cyclohexene Oxide/Carbon Dioxide Copolymerization by Chromium(III) Amino-bis(phenolato) Complexes and MALDI-TOF MS Analysis of the Polycarbonates<sup>†</sup>

Received 00th January 20xx,  
Accepted 00th January 20xx

DOI: 10.1039/x0xx00000x

www.rsc.org/

Katalin Devaine-Pressing,<sup>a</sup> Louise N. Dawe,<sup>a,b</sup> and Christopher M. Kozak<sup>\*a</sup>

Amine-bis(phenolato) chromium(III) chloride complexes **1**-THF, **2**-THF and **1**-DMAP catalyze the copolymerization of cyclohexene oxide and carbon dioxide. These catalysts incorporate tetradentate amine-bis(phenolato) ligands [**L1**] and [**L2**], (where [**L1**] = 2-pyridyl-*N,N*-bis(2-methylene-4-methoxy-6-*tert*-butylphenolato) and [**L2**] = dimethylaminoethylamino-*N,N*-bis(2-methylene-4-methoxy-6-*tert*-butylphenolato)) and when combined with 4-(*N,N*-dimethylamino)pyridine (DMAP) or bis(triphenylphosphoranylidene)ammonium chloride or azide, (PPNCl or PPN<sub>3</sub>), yield low molecular weight polycarbonate with narrow dispersities. The structure of **1**-DMAP incorporates one molecule of 4-(*N,N*-dimethylamino)pyridine (DMAP) and can be used as a single-component catalyst precursor. Polymer end group analysis by MALDI-TOF mass spectrometry reveals possible initiation pathways.

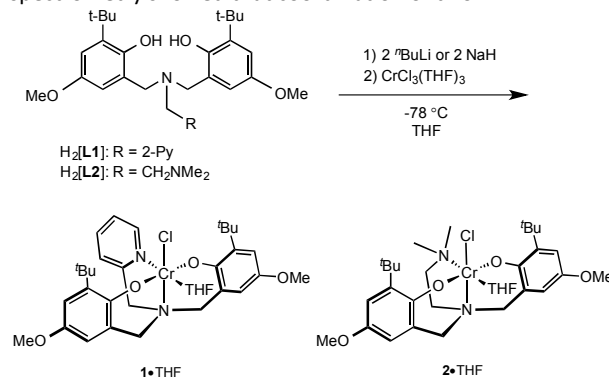
## Introduction

The copolymerization of carbon dioxide (CO<sub>2</sub>) and epoxides has recently become a growing area of interest for several reasons. Most importantly, the reaction is an appealing alternative to the traditional method of polycarbonate synthesis, which involves the use of the endocrine disruptor Bisphenol-A and highly toxic phosgene.<sup>1-4</sup> Furthermore, the high free energy of epoxides drives the reaction forward to convert the very stable CO<sub>2</sub>.<sup>5</sup> Another advantage is that CO<sub>2</sub> is incorporated into the product, which is favorable not only with respect to the atom economy of the reaction, but also because CO<sub>2</sub> is a readily available, non-toxic and low-cost feedstock.<sup>6</sup> Also, CO<sub>2</sub> can be considered a renewable resource,<sup>7</sup> so its utilization is preferred over dwindling fossil fuels that are still the main basis for commercial polycarbonate synthesis.<sup>8</sup>

In order to carry out and control the CO<sub>2</sub>/epoxide copolymerization reaction, an efficient catalyst system is needed.<sup>9</sup> Recently, a large number of complexes have been developed as active catalyst precursors for the copolymerization of CO<sub>2</sub> and epoxides. For example, complexes with Zn,<sup>10-12</sup> Al,<sup>13</sup> Co,<sup>14-21</sup> Fe,<sup>22-23</sup> Mg,<sup>24</sup> and Cr<sup>25-42</sup>

have proven to be active in CO<sub>2</sub>/epoxide copolymerization. Many catalyst systems require a suitable ionic or neutral nucleophilic co-catalyst, the most broadly used include methylimidazole (*N*-Melm), 4-(*N,N*-dimethylamino)pyridine (DMAP) and bis(triphenylphosphoranylidene)ammonium (PPN<sup>+</sup>) salts, such as PPN-chloride, azide, or 2,4-dinitrophenolate (PPNCl, PPN<sub>3</sub>, PPN(2,4-DNP)).

The mechanism of CO<sub>2</sub>/epoxide coupling and copolymerization, particularly the role of the co-catalyst, has been studied by several groups.<sup>34,43-48</sup> For chromium salen complexes, Daresbourg found that the anionic nucleophiles of PPN<sup>+</sup> salts do not exhibit initiation periods, unlike the neutral co-catalysts studied (*N*-heterocyclic amines or phosphines). This was proposed to be due to the fast formation of active, anionic six-coordinate [(salen)Cr(N<sub>3</sub>X)]<sup>-</sup> derivatives.<sup>34</sup> Studies of the binding of DMAP to salen and salan Cr(III) complexes using electrospray ionization mass spectrometry showed that coordination of two DMAP

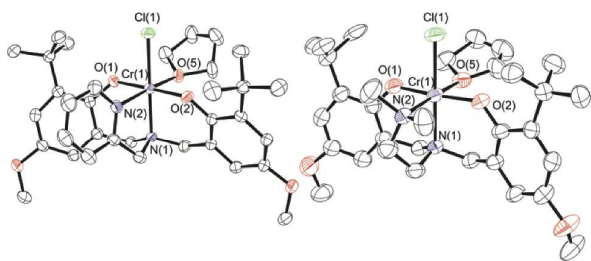


Scheme 1. Synthesis of **1**-THF and **2**-THF.

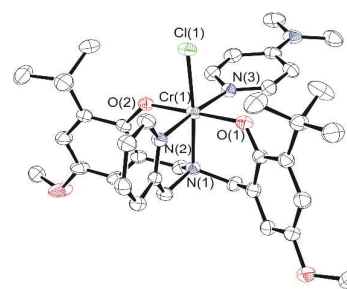
<sup>a</sup> Department of Chemistry, Memorial University of Newfoundland, St. John's, Newfoundland, A1B 3X7, Canada. E-mail: ckozak@mun.ca; Tel: +1-709-864-8082.

<sup>b</sup> C-CART X-ray Diffraction Laboratory, Department of Chemistry, Memorial University of Newfoundland, St. John's, Newfoundland, A1B 3X7, Canada. Current address: Department of Chemistry and Biochemistry, Wilfrid Laurier University, 75 University Ave. W. Waterloo, Ontario, N2L 3C5, Canada.

<sup>†</sup> Electronic supplementary information (ESI) available: Experimental, MALDI-TOF MS, UV-Vis and IR spectra of **1**-THF, **2**-THF and **1**-DMAP, representative <sup>1</sup>H and <sup>13</sup>C NMR and MALDI-TOF mass spectra of PCHC, and crystallographic information files (CIF) for **1**-THF, **2**-THF and **1**-DMAP. CCDC reference numbers: 1408672 – 1408674. For ESI and crystallographic data in CIF or other electronic format see DOI: 10.1039/XXXXXX



**Figure 1.** Partially labeled molecular structures of **1**·THF (left) and **2**·THF (right). Thermal ellipsoids are drawn at 50% probability and H atoms are excluded for clarity.



**Figure 2.** Molecular structure of **1**·DMAP. Thermal ellipsoids are drawn at 50% probability. H atoms are excluded for clarity.

molecules to the Cr center of the salen complex is possible, even under low DMAP to Cr ratios.<sup>44</sup> It was proposed that the stability of the six-coordinate  $[\text{salenCr}(\text{DMAP})_2]^+$  ions is a cause for the long initiation time for this catalyst system. In comparison, no induction period was observed for the *salan* analogue, which also showed a much lower propensity for bis-DMAP adduct formation, requiring much higher DMAP:Cr ratios to observe the presence of  $[\text{salanCr}(\text{DMAP})_2]^+$  ions. The difference in the geometry of the two complexes was speculated as the reason for the difference in DMAP binding. The time needed for the active species to form was ascribed to the slow dissociation of DMAP from the Cr-center of the salen complex to generate a vacant site allowing coordination of the epoxide for subsequent ring opening.

We previously reported the activity of amine-bis(phenolato) chromium(III) complexes for the copolymerization of epoxides and  $\text{CO}_2$ <sup>49-51</sup> and the binding ability of DMAP to several derivatives of these ligands using matrix assisted laser desorption/ionization time-of-flight (MALDI-TOF) mass spectrometry.<sup>52</sup> When used with DMAP, our Cr(III) complexes showed good activity with over 80% conversion of cyclohexene oxide to poly(cyclohexene carbonate) (PCHC) with nearly quantitative carbonate linkages giving polymers with molecular weights up to 13.1 kg/mol. The polymer dispersities were generally low showing good control of the reaction.

Next, we sought to investigate whether amine-bis(phenolato) chromium(III) complexes bearing methoxy groups *para* to the phenolate oxygen instead of the *tert*-butyl substituents present in our previously reported compounds will exhibit an enhanced catalytic activity due to the increased electron donating ability of the phenolate, which was a positive effect observed by Darensbourg and co-workers.<sup>33</sup> Herein, we report the synthesis and structure of three new amine-bis(phenolato) chromium(III) complexes including an amine-bis(phenolato) chromium(III)-DMAP adduct and their activity for the copolymerization of  $\text{CO}_2$  and cyclohexene oxide. Furthermore, the effect of three co-catalysts (DMAP, PPNCI and PPNN<sub>3</sub>) is also studied in detail by end-group analysis of the resulting polymers using MALDI-TOF MS, revealing further insights of the initiation of the polymerization.

## Results and discussion

### Synthesis and characterization of chromium complexes

The protio ligands 2-pyridylmethylamino-*N,N*-bis(2-hydroxy-3-*tert*-butyl-5-methoxyphenol) ( $\text{H}_2[\text{L1}]$ )<sup>53-55</sup> and dimethylethyleneamino-*N,N*-bis(2-hydroxy-3-*tert*-butyl-5-methoxyphenol)<sup>56</sup> ( $\text{H}_2[\text{L2}]$ ) (Scheme 1) were prepared via modified Mannich condensation and using water in place of methanol as solvent. The amine-bis(phenolato) chromium(III) complexes **1** and **2** (or their THF adducts, **1**·THF and **2**·THF) can be synthesized by salt metathesis using the alkali-metallated amine-bis(phenolate)s. The protonated ligands  $\text{H}_2[\text{L1}]$  and  $\text{H}_2[\text{L2}]$  were reacted with either <sup>n</sup>BuLi or NaH at  $-78^\circ\text{C}$  in THF to afford the corresponding Li or Na salts, respectively, which were subsequently reacted with  $\text{CrCl}_3(\text{THF})_3$  at  $-78^\circ\text{C}$  in THF (Scheme 1).

Dark green and purple solids of **1** and **2**, respectively, were obtained in good yields, regardless of the alkali metal used. Elemental analyses of the purified amorphous materials were most consistent with the THF-free compounds (see Experimental), however the structures obtained by single crystal X-ray diffraction showed the crystalline materials are THF adducts (see below). The complexes were further characterized by MALDI-TOF MS, UV-Vis and IR spectroscopy and magnetic susceptibility measurement. The MALDI-TOF mass spectrum of **1** shows a fragment at  $m/z$  577.17 corresponding to the  $[\text{CrClL1}]^+$  ion. The fragment at  $m/z$  542.22 represents the  $[\text{CrL1}]^+$  ion after the loss of the chloride. The isotopic distribution of the experimental  $[\text{CrClL1}]^+$  and  $[\text{CrL1}]^+$  ions are in good agreement with the theoretical representations (See ESI Figures S1 and S2). Two additional peaks are observed at the higher mass region (Figure S1) with the peak at  $m/z$  1156.30 corresponding to a dimeric species  $[\text{Cr}_2\text{L1}_2\text{Cl}_2]^+$  and the peak at  $m/z$  1119.35 represents the fragment ion after chloride loss,  $[\text{Cr}_2\text{L1}_2\text{Cl}]^+$ . The presence of a chloride-bridged dimeric complex is very probable and we have previously reported the structure of such a species.<sup>49</sup> The complex is probably formed as a dimer during synthesis, dissociating to monomeric species in the presence of a coordinating solvent such as THF. In the case of complex **2**, fragments are observed at  $m/z$  522.20 and 557.17, which correspond to the  $[\text{CrL2}]^+$  and  $[\text{CrClL2}]^+$  ions, respectively.

Crystals of **1**·THF and **2**·THF suitable for X-ray diffraction were grown via slow evaporation of toluene/THF solvent mixtures. The molecular structures are shown in Figure 1 and crystallographic and structure refinement data are given in

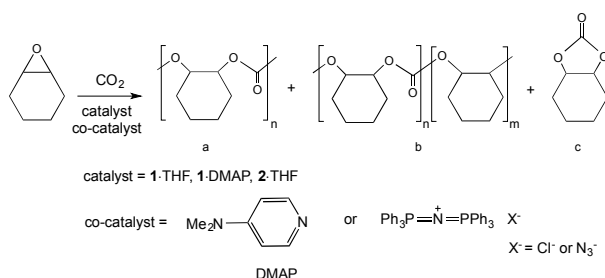
Electronic Supplementary Information (ESI Table S1). As previously observed for other Cr(III)-complexes of amine-bis(phenolato) ligands from our group,<sup>49-51,57</sup> the structure of **1**·THF shows a distorted octahedral geometry at the chromium with one THF molecule coordinated to the metal *trans* to the pendant pyridyl donor. The two phenolate oxygens are coordinated *trans* to each other and the chloride group is *trans* to the amine nitrogen. The same geometry was observed with complex **2**·THF.

Detailed mechanistic studies previously showed that the first step in obtaining the catalytically active species from the catalyst precursor complexes is the coordination of a nucleophilic co-catalyst to the metal center. Indeed, six-coordinate co-catalyst bound salen chromium(III) complexes have been observed both spectroscopically<sup>44</sup> and structurally.<sup>26,44,58</sup> Similarly, reaction of **1**·THF with DMAP allowed isolation of the six-coordinate DMAP adduct, **1**·DMAP. The MALDI-TOF mass spectrum of **1**·DMAP (Figure S4) shows the presence of an intense peak at  $m/z$  699.23 corresponding to the  $[\text{CrL1DMAP}]^+$  ion, indicating that the DMAP is quite strongly bound to the chromium center.<sup>52</sup> The fragment at  $m/z$  664.27 corresponds to the  $[\text{CrL1DMAP}]^+$  ion resulting from chloride loss. The theoretical models are in good agreement with the experimentally observed peaks.

Crystals of **1**·DMAP were obtained via slow evaporation of an equimolar solution of **1**·THF and DMAP in dichloromethane. The molecular structure is shown in Figure 2 and a comparison of the bond lengths and angles for the three Cr complexes is given in Table 1. **1**·DMAP contains two strong  $\sigma$ -donor groups (the pendant pyridyl and DMAP) coordinated to the chromium. As a consequence, **1**·DMAP contains the most electron-rich chromium center among these three complexes, and thus shows the longest average interatomic distances – the two exceptions being the Cr(1)–Cl(1) and the Cr(1)–N(2) interatomic distances. The Cr(1)–N(2) bond is, of course, the longest in complex **2**·THF, as expected for an  $sp^3$ -hybridized amino *N*-donor compared to the pyridine donor in **1**·THF and **1**·DMAP. Furthermore, the steric influence of the tertiary amine is reflected in the bond angles around the chromium. Both the O(1)–Cr(1)–N(2) and O(2)–Cr(1)–N(2) angles are greater than  $90^\circ$  (90.23(15) and 95.29(14) respectively) in **2**·THF meaning that the phenolate oxygens are pushed away from the tertiary amine. The pushing away of the phenolates by the bulkier amine results in a modest weakening of the bond between THF and Cr, resulting in a longer Cr(1) – O(5) bond length in **2**·THF than in **1**·THF. Interestingly, this increased steric crowding of the chromium coordination sphere is believed to inhibit binding of more than one DMAP molecule to the metal in dimethylaminoethyl-functionalized amine,<sup>52</sup> however, the influence of the phenolate substituents cannot be ignored.

### Copolymerization of cyclohexene oxide with CO<sub>2</sub>

The copolymerization of CHO and CO<sub>2</sub> was investigated with complex **1**·THF, **2**·THF and **1**·DMAP (Scheme 2). Nucleophilic neutral or ionic co-catalysts are essential for the reaction; therefore, the activity of the complexes was tested with



**Scheme 2.** Copolymerization of CHO and CO<sub>2</sub> with the possible products of the reaction: (a) PCHC, (b) polyether formation in the polymer chain and (c) cyclohexene carbonate.

DMAP, PPNCI or PPNN<sub>3</sub>. Copolymerization results show good conversion of cyclohexene oxide to PCHC employing **1**·THF and **1**·DMAP complexes with moderate conversions using **2**·THF (Table 2). It is worth noting that the catalysts are selective toward polymer formation (Scheme 2, product a) as there is no or negligible evidence of either polyether (product b) (3.74 ppm in Figure S13) or cyclic carbonate (c) (4.10 ppm in Figure S13) formation based on <sup>1</sup>H NMR spectroscopy (Figures S13 and S14). Resonances at 3.58 and 4.41 ppm correspond to the methine protons of the cyclohexane rings of the end groups. The carbonyl region of the <sup>13</sup>C NMR spectra shows that the obtained polymers are atactic, containing both syndiotactic and isotactic PCHC (Figure S15). The maximum conversion achieved was 83% (Table 2, entries 5, 6 and 11) at which point only the solid polymer was found in the reaction vessel after opening the reactor. No conversion of CHO was observed in the absence of co-catalysts (Table 2, entry 1). Also, complex **1**·THF with DMAP did not show any activity toward CHO homopolymerization (entry 2). Overall, very good conversions and yields were obtained at CO<sub>2</sub> pressures of ~40 bar, 60 °C and at 0.2 mol% catalyst loading (entries 3, 5 – 7, 10 and 11). The dispersities ( $M_w/M_n$ ) of the polymers did not change with molecular weight and are generally narrow with values between 1.26 and 1.43. Decreasing the catalyst loading from 0.2 mol% to 0.1 mol% resulted in a decreased conversion as well as molecular weight (entry 4). This is in accordance with previously obtained CHO/CO<sub>2</sub> copolymerization results in our group.<sup>49,51</sup> Comparing the three co-catalysts utilized, there is no significant difference in conversions, molecular weights and dispersities obtained. PPNCI and PPNN<sub>3</sub> proved to be only slightly better than DMAP, giving higher conversions, activities and molecular weights when **1**·THF was used (entries 3, 5, 6). Carrying out the reaction at room temperature did not produce any polymer product (entry 8) and shortening the reaction time from 24 h to 5 h also produced lower conversion (entry 9). Complex **2**·THF proved to be inferior to complexes **1**·THF and **1**·DMAP, as it showed low conversions with DMAP and PPNCI co-catalysts, and moderate activity with PPNN<sub>3</sub> (entries 12 – 14).

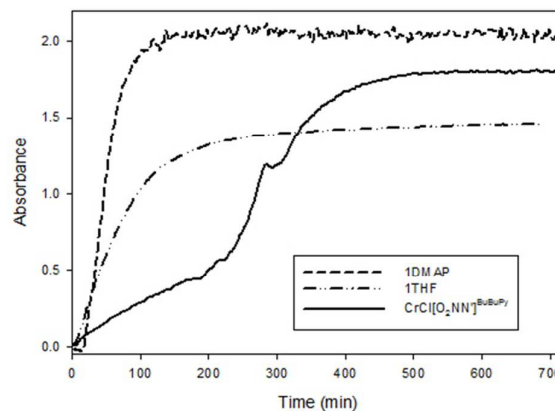
Next, we investigated the effect of co-catalyst mixtures on the copolymerization, thus **1**·DMAP was used together with one eq. of either PPNCI or PPNN<sub>3</sub>. Interestingly, only a slight

**Table 1:** Selected bond lengths (Å) and bond angles (°) of 1·THF, 2·THF and 1·DMAP.

	1·THF	2·THF	1·DMAP
Cr(1)–O(1)	1.943(2)	1.901(3)	1.946(2)
Cr(1)–O(2)	1.912(2)	1.913(3)	1.926(2)
Cr(1)–O(5)	2.074(2)	2.095(3)	-
Cr(1)–N(1)	2.097(2)	2.086(4)	2.129(2)
Cr(1)–N(2)	2.065(3)	2.116(4)	2.088(2)
Cr(1)–N(3)	-	-	2.100(2)
Cr(1)–Cl(1)	2.3463(9)	2.319(2)	2.3386(11)
O(1)–Cr(1)–O(2)	178.17(9)	174.22(13)	178.84(8)
O(1)–Cr(1)–O(5)	86.98(8)	87.38(14)	-
O(2)–Cr(1)–O(5)	91.88(9)	87.26(13)	-
O(1)–Cr(1)–N(2)	89.25(9)	90.23(15)	87.15(9)
O(2)–Cr(1)–N(2)	91.74(10)	95.29(14)	92.86(9)
O(1)–Cr(1)–N(1)	92.09(8)	91.38(13)	91.23(8)
O(2)–Cr(1)–N(1)	86.53(8)	90.92(13)	87.62(8)
O(1)–Cr(1)–N(3)	-	-	89.16(9)
O(2)–Cr(1)–N(3)	-	-	90.78(9)
O(1)–Cr(1)–Cl(1)	91.78(6)	90.21(9)	91.07(6)
O(2)–Cr(1)–Cl(1)	89.67(6)	87.67(9)	90.09(6)
N(2)–Cr(1)–Cl(1)	95.35(7)	94.41(10)	93.49(7)
O(5)–Cr(1)–Cl(1)	90.70(6)	90.52(9)	-
N(3)–Cr(1)–Cl(1)	-	-	89.12(7)

decrease in molecular weights could be observed giving 4.9 kg/mol with PPNCl and 5.6 kg/mol with PPN<sub>3</sub> (entries 10 and 11) compared to 7.3 kg/mol using 1·DMAP alone (entry 7). Selectivity toward polymer formation was unaffected by the addition of these salts. Usually, increasing the amount of co-catalyst used can favor the formation of cyclic carbonate over polycarbonate,<sup>23,50</sup> however, in our system cyclic carbonate formation was not observed upon addition of PPNX salts to 1·DMAP (entries 10 and 11). Potentially, molecular weights might be controlled with elevated amounts of co-catalysts. The observed lower molecular weight can be attributed to the increased concentration of co-catalyst that serves to initiate ring-opening of the epoxide fragment, hence an increased concentration of activated epoxide monomer resulting in growth of a larger number of polymer chains. The increased concentration of nucleophilic co-catalysts may also assist the displacement of the polymer chains from the metal center, which can then participate in chain transfer events leading to polymers terminated with the different initiator species.

The effect of methoxy substituents *para* and *tert*-butyl groups *ortho* to the phenoxide group has been investigated for chromium(III) salen complexes.<sup>33</sup> In that study, the rate of copolymer production was increased when these strongly electron donating salen complexes were employed compared to the di-*tert*-butyl analogues. It was proposed that the increased electron-donating ability of the phenolates had a more positive effect on the rate of polymer formation than by modifying the diimine backbone. Where we previously reported the CHO/CO<sub>2</sub> copolymerization activity of the di-*tert*-butyl substituted amine-bis(phenolate) chromium(III) complex bearing a pyridyl side-arm (i.e. a di-*tert*-butyl functionalized

**Figure 3.** First 12 h of the reaction profiles showing the growth of the absorbance of the polycarbonate carbonyl C=O band at 1750 cm<sup>-1</sup> catalyzed by 1·DMAP (solid line), 1·THF (dashed line) and CrCl[O<sub>2</sub>NN']<sup>BuBuPy</sup> (dashed-dotted line). Reaction conditions: 40 bar CO<sub>2</sub>, 60 °C, [Cr]:[CHO]:[DMAP] = 1:500:1.

analog of complex 1),<sup>49</sup> we compared the rate of copolymerization of that complex with 1·THF and 1·DMAP monitored by *in situ* attenuated total reflectance infrared spectroscopy (ATR-IR). The initial rates of CHO/CO<sub>2</sub> copolymerization catalyzed by 1·DMAP, 1·THF and the previously reported chromium(III) amine-bis(phenolate) complex (abbreviated as CrCl[O<sub>2</sub>NN']<sup>BuBuPy</sup>) were compared and are presented in Figure 3. DMAP was added as co-catalyst for 1·THF and CrCl[O<sub>2</sub>NN']<sup>BuBuPy</sup>.

The fastest initial reaction rate was exhibited by 1·DMAP followed by 1·THF in the presence of equimolar DMAP. It is also worth noting that signal saturation (reaching a plateau in the absorbance of the polycarbonate ν(C=O)) was also achieved within the shortest time by 1·DMAP (~ 2 h), whereas CrCl[O<sub>2</sub>NN']<sup>BuBuPy</sup> reached signal saturation after 8 h. The reaction catalyzed by CrCl[O<sub>2</sub>NN']<sup>BuBuPy</sup> exhibited two stages during the first 6 h. The first stage occurs over 4 h and represents the slowest propagation among the three complexes, while the second stage is faster and lasts for ~ 150 min before signal saturation occurs. In both stages, propagation was slower than for the 1·DMAP and the 1·THF/DMAP catalyzed reactions. Relative reaction rates were calculated based on the propagation in the first hour of the reaction after stabilization of the reaction conditions (~20 min) directly from the change of the carbonyl signal intensity as the slope of the plots (Figure 4). The rates of propagation obey the order of 1·DMAP > 1·THF/DMAP > CrCl[O<sub>2</sub>NN']<sup>BuBuPy</sup>/DMAP and are represented in Table 3.

The first 20 min of the reaction exhibit short initiation periods of approximately 8 min for 1·THF/DMAP and approximately 17 min for 1·DMAP (Figure S11). These initiation times are in accordance with the initiation periods observed for copolymerization by Cr(III)-salen complexes.<sup>34</sup> The longer initiation with 1·DMAP is possibly due to the relatively strong coordination of DMAP, which results in a more stable complex compared to 1·THF/DMAP. The procedure for use of the 1·THF/DMAP catalyst system involves the addition of DMAP to a solution of 1·THF in CHO where the labile THF could rapidly

**Table 2.** Results of the copolymerization of CO<sub>2</sub> and CHO.

Entry <sup>a</sup>	Cat.	[Cr]:[CHO]: [Co-cat.]	Co-cat.	Time (h)	Temp (°C)	CO <sub>2</sub> Pressure (bar)	% Conversion <sup>b</sup>	% Yield <sup>c</sup>	TON <sup>d</sup>	M <sub>n</sub> <sup>e</sup> (kg/mol)	M <sub>w</sub> /M <sub>n</sub> <sup>e</sup>
1	1-THF	1:500:0	-	24	60	40	0	0	0	ND <sup>f</sup>	ND
2	1-THF	1:500:1	DMAP	24	60	0	0	0	0	ND	ND
3 <sup>g</sup>	1-THF	1:500:1	DMAP	24	60	42	75 ± 7	72 ± 1	375 ± 35	7.1	1.36
4 <sup>g</sup>	1-THF	1:1000:1	DMAP	24	60	40	32 ± 4	29 ± 1	320 ± 40	3.7	1.29
5	1-THF	1:500:1	PPNCl	24	60	44	83	82	415	8.1	1.43
6	1-THF	1:500:1	PPNN <sub>3</sub>	24	60	42	83	73	415	7.5	1.26
7	1-DMAP	1:500:0	-	24	60	40	81	62	405	7.3	1.30
8	1-DMAP	1:500:0	-	24	r.t.	40	0	0	0	ND	ND
9	1-DMAP	1:500:0	-	5	60	40	44	25	220	ND	ND
10	1-DMAP	1:500:1	PPNCl	24	60	40	78	73	390	4.9	1.37
11	1-DMAP	1:500:1	PPNN <sub>3</sub>	24	60	40	83	73	415	5.6	1.32
12 <sup>g</sup>	2-THF	1:500:1	DMAP	24	60	40	12 ± 3	ND	60	ND	ND
13	2-THF	1:500:1	PPNCl	24	60	40	20	ND	100	ND	ND
14	2-THF	1:500:1	PPNN <sub>3</sub>	24	60	40	62	46	310	4.3	1.32

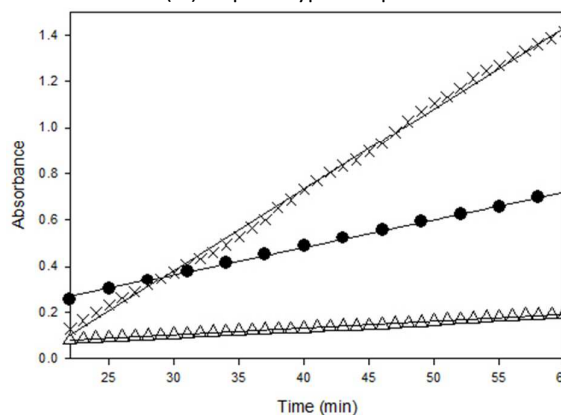
<sup>a</sup>All copolymerization reactions were carried out in neat cyclohexene-oxide (4 mL). <sup>b</sup>Calculated by <sup>1</sup>H-NMR. <sup>c</sup>Yield = moles of isolated product (mass of polymer / molar mass of repeating unit) divided by the moles of starting monomer. <sup>d</sup>Turnover number: moles of repeating units produced per mole of Cr present. <sup>e</sup>Determined by gel permeation chromatography (GPC) in CHCl<sub>3</sub>, calibrated with polystyrene standards. <sup>f</sup>ND = not determined due to low or no conversion. <sup>g</sup>Based on two runs.

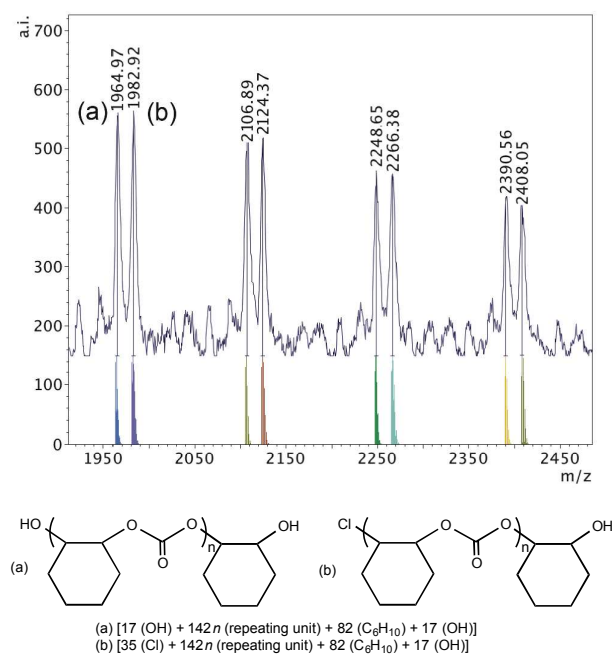
**Table 3.** Relative reaction rates based on the changes in the absorbance at 1750 cm<sup>-1</sup> corresponding to the ν(C=O) of the growing polycarbonate chains and R<sup>2</sup> values of the linear regressions.

Complex	Relative reaction rate <i>r</i> <sub>obs</sub> (× 10 <sup>-2</sup> min <sup>-1</sup> )	Relative reaction rate <i>r</i> <sub>obs</sub> (× 10 <sup>-4</sup> s <sup>-1</sup> )	R <sup>2</sup>
1-DMAP	3.5 ± 0.026	5.8 ± 0.043	0.9980
1-THF	1.2 ± 0.020	2.0 ± 0.033	0.9978
CrCl[O <sub>2</sub> NN'] <sup>BuBuPy</sup>	0.29 ± 0.0032	0.48 ± 0.0053	0.9960

give rise to an open coordination site, therefore CHO coordination to the chromium center of **1** may occur prior to DMAP binding. DMAP coordination to our chromium(III)-complexes was studied in detail in our group previously and the binding of two equivalents of DMAP was observed by MALDI-TOF MS even under equimolar concentrations of chromium complex **1** and DMAP.<sup>52</sup> By comparison, CrCl[O<sub>2</sub>NN']<sup>BuBuPy</sup> is THF-free, but exists as a dimer in the solid state and in non-coordinating solvents.<sup>49</sup> The very short initiation time of approximately 5 min. may arise from dissociation of the dimeric complex to monomeric species. This may also serve to explain the two stages of the reaction giving different rates or propagation. Dissociation of the dimer into monomers leads to five-coordinate Cr(III) sites that catalyze copolymerization according to the rate observed in the first stage (as modeled in Figure 4). A faster rate ensues during the second stage, which may be due to DMAP

coordination and chloride dissociation. Initiation of epoxide ring opening by chloride nucleophiles is believed to dominate the reaction based on end-group analysis of the polymer by MALDI-TOF MS, where no DMAP-containing end-groups were observed.<sup>49,52</sup> Even for the faster second stage, the rate proved to be slower (*r*<sub>obs</sub> = 0.75 × 10<sup>-2</sup> min<sup>-1</sup>, Figure S12) than the rates with *para*-methoxy-containing 1-DMAP and 1-THF (3.5 × 10<sup>-2</sup> min<sup>-1</sup> and 1.2 × 10<sup>-2</sup> min<sup>-1</sup> respectively). Rieger and co-workers observed two different rates of propagation after initiation with a dinuclear Cr(III)-salphen type complex.<sup>59</sup>

**Figure 4.** Initial rates of reaction profiles during the first hour based on the absorbance of the ν(C=O) of the polycarbonates. 1-DMAP (x), 1-THF (●), CrCl[O<sub>2</sub>NN']<sup>BuBuPy</sup> (Δ). Lines represent best fits of a linear model to the observed data (see Table 3).



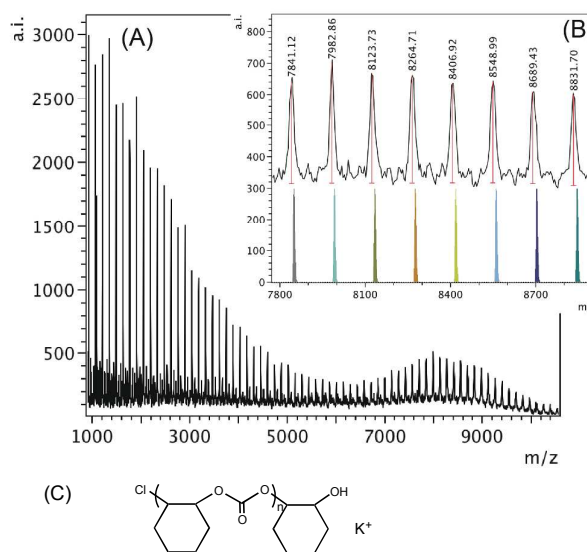
**Figure 5.** MALDI-TOF mass spectrum ( $m/z$  1950 – 2450,  $n = 13 - 17$ ) produced by 1-DMAP according to Table 2, entry 7 with calculated masses of fragments shown beneath the observed spectrum and the proposed structures of polymers (a) and (b).

The first stage was attributed to a heterogeneous phase due to the insolubility of the flexibly linked dinuclear complex, which was followed by a homogeneous stage after dissolution of the complex. Our complex, CrCl(O<sub>2</sub>NN)<sup>1-BuBuPy</sup> proved to be highly soluble in CHO, so this is unlikely the cause for the two different rates in our case.

#### Polymer end group analysis on polymers produced by 1-THF and 1-DMAP by MALDI-TOF mass spectrometry

MALDI-TOF mass spectrometry is valuable for end-group analysis and the mass spectra of the polymers obtained show multiple end-group series, where repeating units of  $m/z$  142 are observed corresponding to the expected cyclohexane carbonate motif. The variety of end groups is a result of different initiation possibilities demonstrated by these catalyst systems, i.e. the chromium chloride-containing catalyst and the additional DMAP, chloride or azide nucleophile. In the next section, first, the end groups of the polymers produced with 1-DMAP alone and with 1-THF/DMAP will be discussed. Then, the end group analysis of the polymers produced by 1-DMAP and added PPNX salts will follow revealing more information on the initiation of the copolymerization.

When 1-DMAP was used according to the conditions in Table 2, entry 7, the MALDI-TOF MS spectrum of the polymer produced shows two major sets of chains (Figure 5). One series possesses chloride and a hydroxyl end groups, whereas the other series possesses two hydroxyl group ends, which implies that there is either adventitious water present and/or cyclohexene-1,2-diol is produced during polymerization causing rapid chain transfers.<sup>60</sup> No DMAP end-groups were



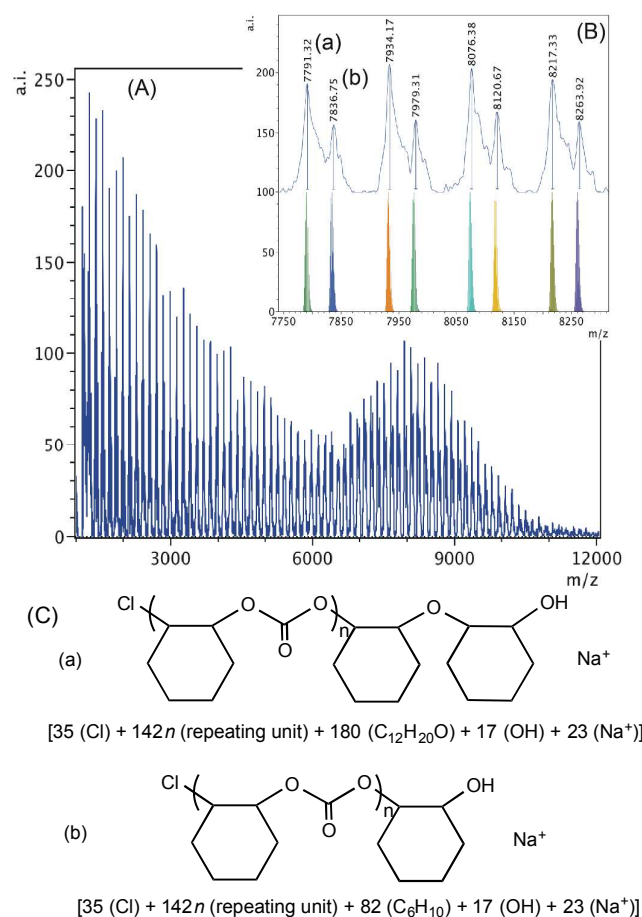
**Figure 6.** (A) MALDI-TOF mass spectrum produced by 1-THF according to Table 2, entry 3. (B) Higher mass region ( $m/z$  7800 – 8900,  $n = 54 - 61$ ) of the spectrum with calculated masses of fragments shown beneath the observed spectrum. (C) Proposed structure of the high mass polymer.

observed, showing a probable chloride dissociation and initiation, while DMAP stays coordinated.

The higher mass region of the MALDI-TOF mass spectrum of the polymer produced by 1-THF according to Table 2, entry 3 is shown in Figure 6. The polymer consists of only one main chain in the higher mass region ( $m/z$  7800 – 8900, inset of Figure 6B), which is also chloride initiated and hydroxyl group terminated with a K<sup>+</sup> ion in the chain, also corresponding to chloride initiation again.

Inspection of the low molecular weight region of the MALDI-TOF mass spectrum between  $m/z$  1900 to 2700, however, reveals the presence of both DMAP and chloride initiated polymer chains (Figure S16). Altogether, four different species were detected. Series (a) with the most intense peaks corresponds to a polymer with DMAP and chloride end groups with one ether linkage in the polymer structure (the ether linkage could be located anywhere in the chain). The presence of DMAP in one end of the polymer end groups indicates that DMAP can also initiate ring opening of the epoxide. Series (b) – the lowest intensity peaks that disappear above  $m/z$  2300 – possess DMAP and chloride termini. Series (c) with two hydroxyl group ends is probably the result of chain transfer reactions caused by trace water contamination.<sup>60</sup> Series (d) is represented by chloride and hydroxyl end group-containing polymer, where a sodium ion is also present.

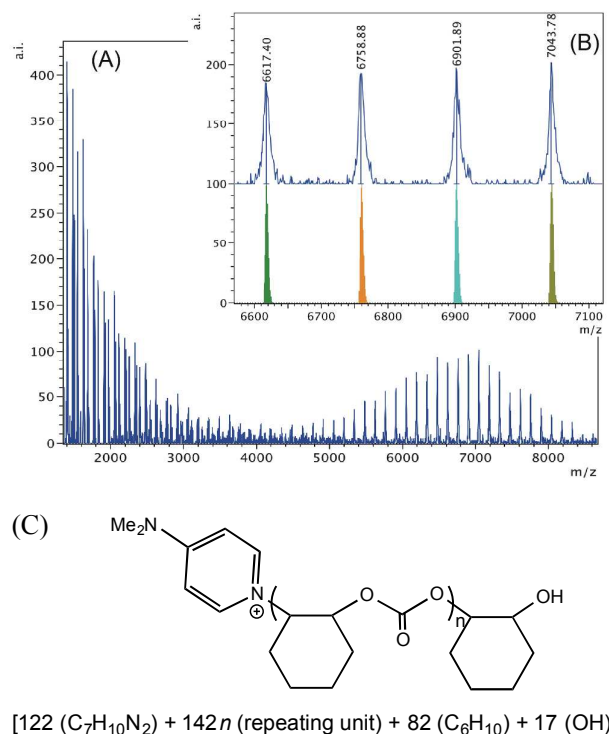
When 1-THF is used with PPNCl, chloride initiation is anticipated as both the complex and the co-catalyst contain chloride groups capable of ring-opening. As shown in Figure 7, chloride groups are observed in both of the two sets of polymers detected in the higher mass region. Series (a) and (b)



**Figure 7.** (A) MALDI-TOF mass spectrum produced by 1-THF according to Table 2, entry 5. (B) Higher mass region ( $m/z$  7750 – 8300,  $n = 53 - 56$ ) of the spectrum with calculated masses of fragments shown beneath the observed spectrum. (C) Proposed structures of the high mass range polymers (a) and (b).

are both hydroxyl group terminated and contain sodium ions. The difference between the two is the presence of an ether linkage incorporated in polymer chain (a). The presence of the chloride end groups in both cases, again, is the indication of initiation by chlorides, which can come from the complex or the added PPNCl nucleophile. In the lower mass region (Figure S17) three sets of polymer chains are observed; series (a) is dihydroxylated, series (b) contains chloride and hydroxyl termini, and series (c) contains chloride end groups. Series (c) could be the result of intermolecular chain transfer of two chains initiated by chloride.<sup>50</sup>

Interestingly, when 1-DMAP is used together with PPNCl, only DMAP initiated polymer chains are observed in both the upper and the lower mass region (Figure 8A). This suggests that the coordinated DMAP is displaced by the anionic chloride and can attack a coordinated cyclohexene oxide. The polymer chain illustrated in the high mass region (Figure 8B) is present over a wide mass range from 2000 – 8000  $m/z$  shows initiation by a DMAP molecule and termination by hydrolysis of the metal alkoxide. In the lower mass region (Figure S18) we can only see DMAP initiated polymer chains. In series (a) we

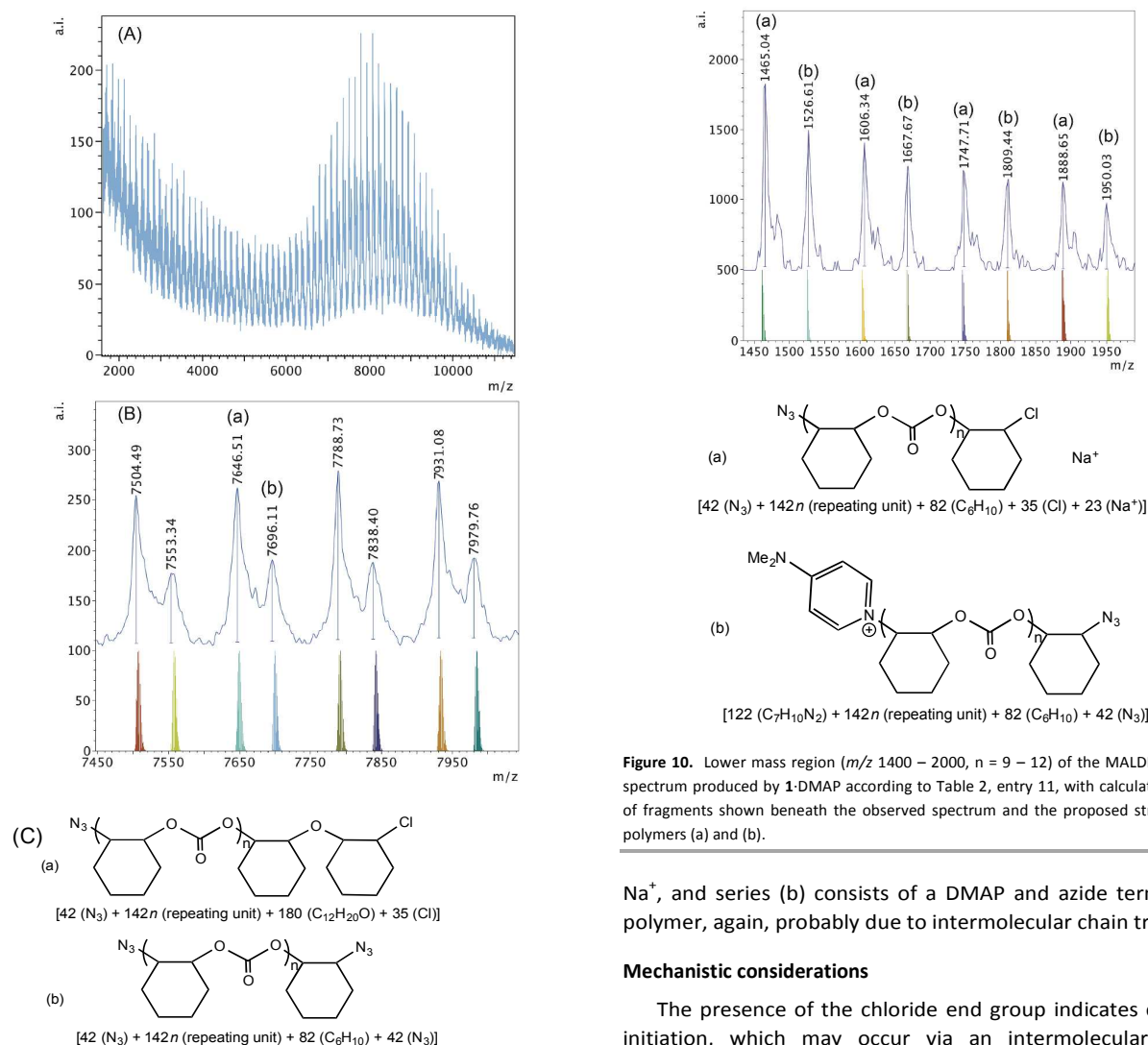


**Figure 8.** (A) MALDI-TOF mass spectrum of polycarbonate produced by 1-DMAP according to Table 2, entry 10. (B) Higher mass region ( $m/z$  6600 – 7100,  $n = 45 - 48$ ) of the spectrum with calculated masses of fragments shown beneath the observed spectrum. (C) Proposed structure of the high mass range polymer.

observe a series with an ether linkage incorporated in the chain terminated by a hydroxyl group, plus a sodium ion. Series (b) consists of a hydroxyl end group and series (c) of a chloride and DMAP termini with a  $\text{Na}^+$  ion. Most likely series (c) represents an intermolecular chain transfer between a DMAP and a chloride initiated polymer chain. This observation is different from the 1-DMAP-catalyzed reaction without any PPNX salt (Table 2, entry 7), where there were no DMAP initiated polymer chains found. The difference may be attributed to the elevated amount of chloride ions. When PPNCl is added, there are twice as many chloride ions present coming from both the complex and the  $\text{PPN}^+$  salt compared to where there is no PPNCl added. Consequently, the competition for an open coordination site is higher, which can easily result in DMAP dissociation and incorporation of the polymer chain end.

The spectrum of the polymer obtained when 1-THF was used in the presence of  $\text{PPN}_3$  shows high intensity peaks in the high mass region (Figure 9). Two sets of polymers can be observed in this region between  $m/z$  7400 – 8000. Based on the calculation shown in Figure 9 (C), series (a) shows an ether linkage in the polymer chain that was initiated by a nucleophilic attack of an azide group and was terminated by a chloride group. Series (b) is again most likely the result of an intermolecular chain transfer between two polymer chains that were both initiated by azide groups. In the lower mass





**Figure 10.** Lower mass region ( $m/z$  1400 – 2000,  $n = 9 - 12$ ) of the MALDI-TOF mass spectrum produced by **1**-DMAP according to Table 2, entry 11, with calculated masses of fragments shown beneath the observed spectrum and the proposed structures of polymers (a) and (b).

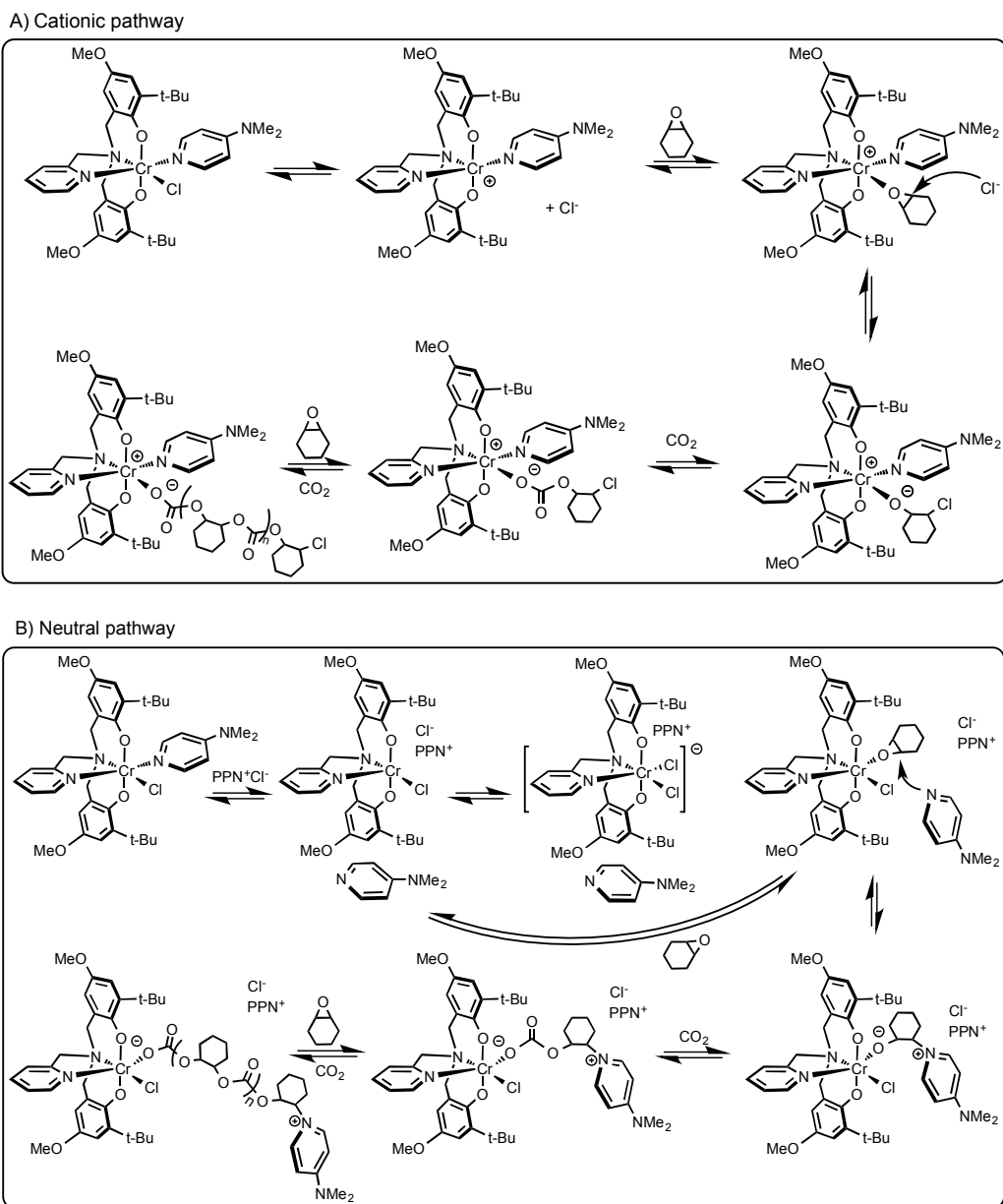
$Na^+$ , and series (b) consists of a DMAP and azide terminated polymer, again, probably due to intermolecular chain transfer.

#### Mechanistic considerations

The presence of the chloride end group indicates chloride initiation, which may occur via an intermolecular or an intramolecular pathway.<sup>49</sup> Displacement of the chloride by an epoxide has been shown to be viable based on the bond strengths between chromium and epoxide or chloride with salen complexes calculated in an elegant recent computational study.<sup>61</sup> In this manner one possible pathway can be the replacement of the chloride with an epoxide, which points toward the intermolecular ring opening by the chloride. After the chloride loss, a cationic complex is produced and provides the platform for copolymerization. This possibility of the cationic route is depicted in Scheme 3A. Of course, it cannot be excluded that under polymerization conditions the nucleophilic co-catalyst (DMAP) dissociates from the central metal, e.g. in the case of the **1**-DMAP/PPNCl system and ring opens a then coordinated epoxide (Scheme 3B). In this case, the chlorides of PPNCl compete with the DMAP for coordination to the metal center leading to a chromium dichloride intermediate.<sup>26</sup> Displacement of one of the chlorides produces a vacant site for epoxide binding and the free DMAP can now serve as nucleophile for epoxide ring-opening. Initiation by a chloride, however, is also possible based on the end group analysis of the **1**-DMAP/PPNCl system,

region, however, azide group-initiated polymer chains are not observed (Figure S19). Series (a) with chloride and hydroxyl end groups and series (b) with two hydroxyl termini represent polymers where chain termination and chain transfer could be caused by adventitious water resulting in lower molecular weight polymer chains.

Azide initiated polymer chains were also observed when **1**-DMAP was used together with PPNN<sub>3</sub> (Figure S20 and Figure 10). In the high mass region (Figure S20) of the spectrum there is only one significant high intensity set of peaks observed, which corresponds to an azide and chloride terminated polymer cationized by  $Na^+$ . In the lower mass region two main sets of polymers can be discerned from the spectrum (Figure 10): series (a) possesses azide and chloride groups plus



**Scheme 3.** (A) Proposed initiation pathway for the copolymerization of cyclohexene oxide and carbon dioxide with **1**-DMAP and (B) with **1**-DMAP/PPNCl

where both DMAP and chloride termini were observed in the lower mass region of the MALDI-TOF mass spectrum likely caused by chain transfer. Several different initiation possibilities were extensively elaborated upon and compiled in reviews.<sup>7,62-63</sup> Based on our observations, we propose that it is the monometallic intermolecular initiation pathway that most likely occurs with these chromium(III)-bis(phenolate) complexes (Scheme 3).

## Conclusions

Chromium(III) complexes **1**·THF and **1**-DMAP show improved catalytic activity over our previously reported complex, CrCl[O<sub>2</sub>NN']<sup>BuBuPy</sup>, in the copolymerization of cyclohexene

oxide and CO<sub>2</sub>. End group analysis of the polymers obtained by **1**·THF and **1**-DMAP indicates that ring opening is most probably initiated by the anion of the co-catalyst except when **1**-DMAP is used with PPNCl, in which case DMAP dissociation is observed, leading to its role as the epoxide ring-opening nucleophile as shown by polymer end group analysis by MALDI-TOF MS. Based on this end group analysis, we propose that CO<sub>2</sub>/epoxide copolymerization catalyzed by chromium (III) amine-bis(phenolate) complexes is initiated by epoxide ring opening by an external nucleophile, that is, an intermolecular pathway.

## Acknowledgements

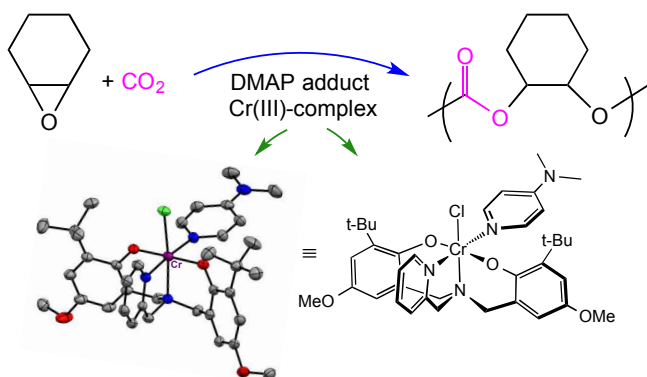
Financial support was provided by the Canada Foundation for Innovation (CFI), Newfoundland and Labrador Research Development Corporation, the Natural Sciences and Engineering Research Council (NSERC) of Canada and Memorial University of Newfoundland.

## References

1. T. Sakakura, J.-C. Choi and H. Yasuda, *Chem. Rev.*, 2007, **107**, 2365-2387.
2. A. M. Nelson and T. E. Long, *Polym. Int.*, 2012, **61**, 1485-1491.
3. S. Fukuoka, M. Kawamura, K. Komiyama, M. Tojo, H. Hachiya, K. Hasegawa, M. Aminaka, H. Okamoto, I. Fukawa and S. Konno, *Green Chem.*, 2003, **5**, 497-507.
4. W. B. Kim, U. A. Joshi and J. S. Lee, *Ind. Eng. Chem. Res.*, 2004, **43**, 1897-1914.
5. D. J. Darensbourg, *Inorg. Chem.*, 2010, **49**, 10765-10780.
6. D. J. Darensbourg, *Chem. Rev.*, 2007, **107**, 2388-2410.
7. M. R. Kember, A. Buchard and C. K. Williams, *Chem. Commun.*, 2011, **47**, 141-163.
8. M. Tolinski, *Plastics and Sustainability : Towards a Peaceful Coexistence Between Bio-Based and Fossil Fuel-Based Plastics*, Wiley-Scrivener, Hoboken, NJ, USA, 2011.
9. G. W. Coates and D. R. Moore, *Angew. Chem. Int. Ed.*, 2004, **43**, 6618-6639.
10. K. Nakano, T. Hiyama and K. Nozaki, *Chem. Commun.*, 2005, 1871-1873.
11. H. Sugimoto and A. Ogawa, *React. Funct. Polym.*, 2007, **67**, 1277-1283.
12. N. Ikpo, L. N. Saunders, J. L. Walsh, J. M. B. Smith, L. N. Dawe and F. M. Kerton, *Eur. J. Inorg. Chem.*, 2011, 5347-5359.
13. D. J. Darensbourg and D. R. Billodeaux, *Inorg. Chem.*, 2005, **44**, 1433-1442.
14. X. B. Lu, L. Shi, Y. M. Wang, R. Zhang, Y. J. Zhang, X. J. Peng, Z. C. Zhang and B. Li, *J. Am. Chem. Soc.*, 2006, **128**, 1664-1674.
15. G. P. Wu, S. H. Wei, W. M. Ren, X. B. Lu, T. Q. Xu and D. J. Darensbourg, *J. Am. Chem. Soc.*, 2011, **133**, 15191-15199.
16. X. B. Lu, W. M. Ren and G. P. Wu, *Acc. Chem. Res.*, 2012, **45**, 1721-1735.
17. J. Yoo, S. J. Na, H. C. Park, A. Cyriac and B. Y. Lee, *Dalton Trans.*, 2010, **39**, 2622-2630.
18. K. Nakano, S. Hashimoto and K. Nozaki, *Chem. Sci.*, 2010, **1**, 369-373.
19. C. E. Anderson, S. I. Vagin, W. Xia, H. Jin and B. Rieger, *Macromolecules*, 2012, **45**, 6840-6849.
20. L. N. Saunders, N. Ikpo, C. F. Petten, U. K. Das, L. N. Dawe, C. M. Kozak and F. M. Kerton, *Catal. Commun.*, 2012, **18**, 165-167.
21. M. Reiter, P. T. Altenbuchner, S. Kissling, E. Herdtweck and B. Rieger, *Eur. J. Inorg. Chem.*, 2015, **2015**, 1766-1774.
22. A. Buchard, M. R. Kember, K. G. Sandeman and C. K. Williams, *Chem. Commun.*, 2011, **47**, 212-214.
23. M. Taherimehr, S. M. Al-Amsyar, C. J. Whiteoak, A. W. Kleij and P. P. Pescarmona, *Green Chem.*, 2013, **15**, 3083-3090.
24. M. R. Kember and C. K. Williams, *J. Am. Chem. Soc.*, 2012, **134**, 15676-15679.
25. K. Nakano, M. Nakamura and K. Nozaki, *Macromolecules*, 2009, **42**, 6972-6980.
26. D. J. Darensbourg and A. I. Moncada, *Inorg. Chem.*, 2008, **47**, 10000-10008.
27. P. Chen, M. H. Chisholm, J. C. Gallucci, X. Zhang and Z. Zhou, *Inorg. Chem.*, 2005, **44**, 2588-2595.
28. R. L. Paddock and S. T. Nguyen, *J. Am. Chem. Soc.*, 2001, **123**, 11498-11499.
29. S. Mang, A. I. Cooper, M. E. Colclough, N. Chauhan and A. B. Holmes, *Macromolecules*, 2000, **33**, 303-308.
30. D. J. Darensbourg and J. C. Yarbrough, *J. Am. Chem. Soc.*, 2002, **124**, 6335-6342.
31. D. J. Darensbourg, J. C. Yarbrough, C. Ortiz and C. C. Fang, *J. Am. Chem. Soc.*, 2003, **125**, 7586-7591.
32. R. Eberhardt, M. Allmendinger and B. Rieger, *Macromol. Rapid Commun.*, 2003, **24**, 194-196.
33. D. J. Darensbourg, R. M. Mackiewicz, J. L. Rodgers, C. C. Fang, D. R. Billodeaux and J. H. Reibenspies, *Inorg. Chem.*, 2004, **43**, 6024-6034.
34. D. J. Darensbourg and R. M. Mackiewicz, *J. Am. Chem. Soc.*, 2005, **127**, 14026-14038.
35. D. J. Darensbourg, R. M. Mackiewicz and D. R. Billodeaux, *Organometallics*, 2005, **24**, 144-148.
36. B. Li, R. Zhang and X. B. Lu, *Macromolecules*, 2007, **40**, 2303-2307.
37. X. Q. Xu, C. M. Wang, H. R. Li, Y. Wang, W. L. Sun and Z. Q. Shen, *Polymer*, 2007, **48**, 3921-3924.
38. B. Li, G. P. Wu, W. M. Ren, Y. M. Wang, D. Y. Rao and X. B. Lu, *J. Polym. Sci., Part A: Polym. Chem.*, 2008, **46**, 6102-6113.
39. D. J. Darensbourg and S. B. Fitch, *Inorg. Chem.*, 2009, **48**, 8668-8677.
40. D. J. Darensbourg, M. Ulusoy, O. Karroonnirum, R. R. Poland, J. H. Reibenspies and B. Çetinkaya, *Macromolecules*, 2009, **42**, 6992-6998.
41. D. J. Darensbourg, R. R. Poland and A. L. Strickland, *J. Polym. Sci., Part A: Polym. Chem.*, 2012, **50**, 127-133.
42. L. P. Guo, C. M. Wang, W. J. Zhao, H. R. Li, W. L. Sun and Z. Q. Shen, *Dalton Trans.*, 2009, 5406-5410.
43. D. Adhikari, S. T. Nguyen and M.-H. Baik, *Chem. Commun.*, 2014, **50**, 2676-2678.
44. D. Y. Rao, B. Li, R. Zhang, H. Wang and X. B. Lu, *Inorg. Chem.*, 2009, **48**, 2830-2836.
45. Y. L. Xiao, Z. Wang and K. L. Ding, *Macromolecules*, 2006, **39**, 128-137.
46. G. A. Luinstra, G. R. Haas, F. Molnar, V. Bernhart, R. Eberhardt and B. Rieger, *Chem. Eur. J.*, 2005, **11**, 6298-6314.
47. M. H. Chisholm and Z. P. Zhou, *J. Am. Chem. Soc.*, 2004, **126**, 11030-11039.
48. M. Cheng, D. R. Moore, J. J. Reczek, B. M. Chamberlain, E. B. Lobkovsky and G. W. Coates, *J. Am. Chem. Soc.*, 2001, **123**, 8738-8749.
49. R. K. Dean, L. N. Dawe and C. M. Kozak, *Inorg. Chem.*, 2012, **51**, 9095-9103.
50. R. K. Dean, K. Devaine-Pressing, L. N. Dawe and C. M. Kozak, *Dalton Trans.*, 2013, **42**, 9233-9244.
51. H. Chen, L. N. Dawe and C. M. Kozak, *Catal. Sci. Technol.*, 2014, **4**, 1547-1555.
52. C. M. Kozak, A. M. Woods, C. S. Bottaro, K. Devaine-Pressing and K. Ni, *Faraday Discuss.*, 2015, In press.
53. S. Menage, G. Gellon, J.-L. Pierre, D. Zurita and E. Saint-Aman, *Bull. Soc. Chim. Fr.*, 1997, **134**, 785-791.
54. K. Devaine-Pressing, J. H. Lehr, M. E. Pratt, L. N. Dawe, A. A. Sarjeant and C. M. Kozak, *Dalton Trans.*, 2015, **44**, 12365-12375.
55. S. Heidari, E. Safaei, A. Wojtczak, P. Cotic and A. Kozakiewicz, *Polyhedron*, 2013, **55**, 109-116.
56. L. M. Alcazar-Roman, B. J. O'Keefe, M. A. Hillmyer and W. B. Tolman, *Dalton Trans.*, 2003, 3082-3087.

57. R. K. Dean, S. L. Granville, L. N. Dawe, A. Decken, K. M. Hattenhauer and C. M. Kozak, *Dalton Trans.*, 2010, **39**, 548-559.
58. D. J. Darensbourg, A. I. Moncada, W. Choi and J. H. Reibenspies, *J. Am. Chem. Soc.*, 2008, **130**, 6523-6533.
59. S. Klaus, S. I. Vagin, M. W. Lehenmeier, P. Deglmann, A. K. Brym and B. Rieger, *Macromolecules*, 2011, **44**, 9508-9516.
60. F. Jutz, A. Buchard, M. R. Kember, S. B. Fredriksen and C. K. Williams, *J. Am. Chem. Soc.*, 2011, **133**, 17395-17405.
61. D. J. Darensbourg and A. D. Yeung, *Polym. Chem.*, 2015, **6**, 1103-1117.
62. P. P. Pescarmona and M. Taherimehr, *Catal. Sci. Technol.*, 2012, **2**, 2169-2187.
63. S. Klaus, M. W. Lehenmeier, C. E. Anderson and B. Rieger, *Coord. Chem. Rev.*, 2011, **255**, 1460-1479.

## Table of contents entry and graphic



Single-component chromium(III) catalysts for copolymerization of  $\text{CO}_2$  and cyclohexene oxide have been prepared and mechanistic information has been obtained by detailed MALDI-TOF mass spectrometry studies of the resulting polymers.