

# Organic & Biomolecular Chemistry

Accepted Manuscript



This is an *Accepted Manuscript*, which has been through the Royal Society of Chemistry peer review process and has been accepted for publication.

*Accepted Manuscripts* are published online shortly after acceptance, before technical editing, formatting and proof reading. Using this free service, authors can make their results available to the community, in citable form, before we publish the edited article. We will replace this *Accepted Manuscript* with the edited and formatted *Advance Article* as soon as it is available.

You can find more information about *Accepted Manuscripts* in the [Information for Authors](#).

Please note that technical editing may introduce minor changes to the text and/or graphics, which may alter content. The journal's standard [Terms & Conditions](#) and the [Ethical guidelines](#) still apply. In no event shall the Royal Society of Chemistry be held responsible for any errors or omissions in this *Accepted Manuscript* or any consequences arising from the use of any information it contains.

# Acyclic Cucurbit[n]uril-Type Molecular Containers: Influence of Glycoluril Oligomer Length on their Function as Solubilizing Agents

Cite this: DOI: 10.1039/x0xx00000x

Laura Gilberg,<sup>†,‡</sup> Ben Zhang,<sup>‡</sup> Peter Y. Zavalij,<sup>‡</sup> Vladimir Sindelar,<sup>\*,†</sup> Lyle Isaacs<sup>\*,‡</sup>

Received 00th January 2012,  
Accepted 00th January 2012

DOI: 10.1039/x0xx00000x

www.rsc.org/

We present the synthesis of a series of six new glycoluril derived molecular clips and acyclic CB[n]-type molecular containers (**1** – **3**) that all feature SO<sub>3</sub><sup>-</sup> solubilizing groups but differ in the number of glycoluril rings between the two terminal dialkoxyaromatic sidewalls. We report the x-ray crystal structure of **3b** which shows that its dialkoxy-naphthalene sidewalls actively define a hydrophobic cavity with high potential to engage in  $\pi$ - $\pi$  interactions with insoluble aromatic guests. Compounds **1** – **3** possess very good solubility characteristics ( $\geq 38$  mM) and undergo only very weak self-association ( $K_s < 92$  M<sup>-1</sup>) in water. The weak self-association is attributed to unfavorable SO<sub>3</sub><sup>-</sup>•••SO<sub>3</sub><sup>-</sup> electrostatic interactions in the putative dimers **1**<sub>2</sub> – **4**<sub>2</sub>. Accordingly, we created phase solubility diagrams to study their ability to act as solubilizing agents for four water insoluble drugs (PBS-1086, camptothecin,  $\beta$ -estradiol, and ziprasidone). We find that the containers **3a** and **3b** which feature three glycoluril rings between the terminal dialkoxy-*o*-xylylene and dialkoxy-naphthalene sidewalls are less efficient solubilizing agents than **4a** and **4b** because of their smaller hydrophobic cavities. Containers **1** and **2** behave as molecular clip type receptors and therefore possess the ability to bind to and thereby solubilize aromatic drugs like camptothecin and ziprasidone, and PBS-1086.

## Introduction

A ubiquitous problem facing the pharmaceutical industry is that an estimated 40-70% of new drug candidates are so poorly soluble that they cannot be formulated on their own.<sup>1</sup> Accordingly, there is a real need for the development of new tools that improve the solubility of poorly soluble drugs that enable their formulation. To date, a wide variety of methods that enhance the rate and extent of dissolution have been developed including solid dispersions and nanocrystalline solid forms of the drug.<sup>2</sup> Other methods that have been demonstrated to improve solubility include the preparation of salts, higher solubility prodrugs, dendrimer-drug systems, and designed co-crystalline forms of the drug.<sup>3</sup> However, the most attractive approach to improving solubility of insoluble drugs from the point of view of supramolecular chemists relies on the use of cyclodextrin molecular containers (e.g. HP- $\beta$ -CD, SBE- $\beta$ -CD, Figure 1) as solubilizing excipients.<sup>4</sup> Cyclodextrin derivatives are currently used to formulate a number of drugs that are administered to humans.

In recent years, we and others, have been actively investigating the synthesis, molecular recognition properties, and applications of an alternative class of molecular container compounds known as cucurbit[n]urils (CB[n], n = 5, 6, 7, 8, 10,

14; Figure 1).<sup>5</sup> The great interest in CB[n] compounds arises from the availability of a homologous series of hosts that display both high affinity ( $K_a$  up to 10<sup>17</sup> M<sup>-1</sup>) and high selectivity toward their guests in water.<sup>6</sup> In addition, the inherent stimuli responsiveness (pH, chemical, electrochemical, photochemical) of CB[n]•guest complexes have made CB[n] popular components to create functional systems including molecular machines, chemical sensors, affinity capture phases, and gas purification materials.<sup>7</sup> Accordingly, workers in the CB[n] field envisioned that CB[n] compounds – particularly CB[7] with its good water solubility – might be good substitutes for cyclodextrins in pharmaceutical applications. In recent years, the macrocyclic CB[n] compounds were demonstrated to have low *in vitro* and *in vivo* toxicity<sup>8</sup> and have been used to solubilize, protect, activate, and deliver pharmaceutical agents.<sup>9</sup> CB[8] has been used as a glue to create polymer hydrogels and nanocapsules based on ternary complex formation.<sup>10</sup> Derivatives of macrocyclic CB[n] have even been used for targeted drug delivery applications.<sup>11</sup> Over the years, both the Isaacs and Sindelar groups have worked toward an improved understanding of the mechanism of CB[n] formation – especially with regard to the intermediate methylene bridged glycoluril dimers and higher oligomers<sup>12</sup> –

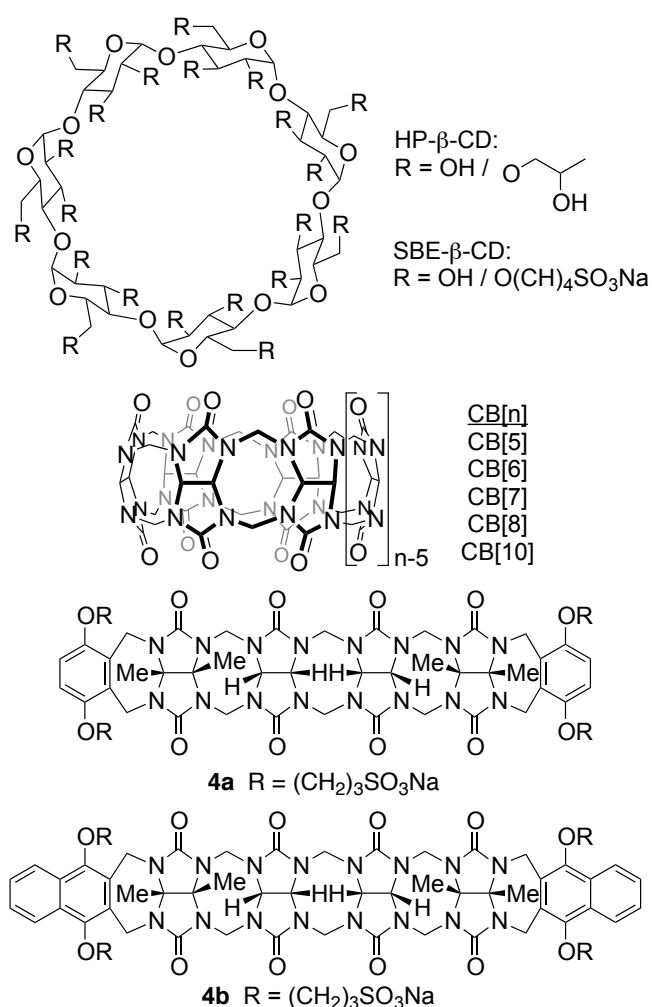


Figure 1. Structures of solubilizing molecular containers.

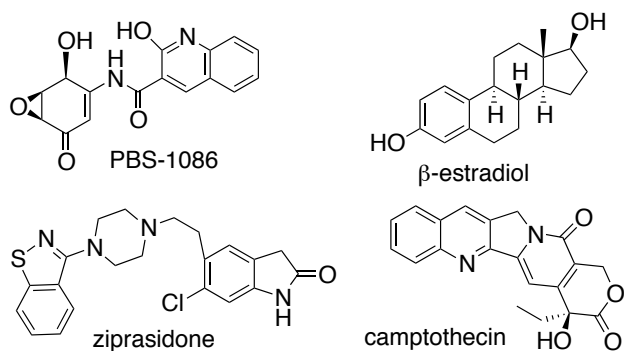


Figure 2. Structures of insoluble drugs used in this study.

and the preparation of new members of the cucurbit[n]uril family. These studies have resulted in the preparation of glycoluril dimer based molecular clips,<sup>13</sup> CB[n] analogues,<sup>14</sup> inverted CB[n],<sup>15</sup> nor-seco-CB[n],<sup>16</sup> bambus[n]urils,<sup>17</sup> CB[n] derivatives,<sup>11a,12e,18</sup> CB[n] dimers,<sup>19</sup> and acyclic CB[n]-type receptors.<sup>12d,12g,12j,20</sup> Recently, the Isaacs group used acyclic CB[n] containers as solubilizing excipients<sup>21</sup> for insoluble drugs and reported the influence of the nature of the

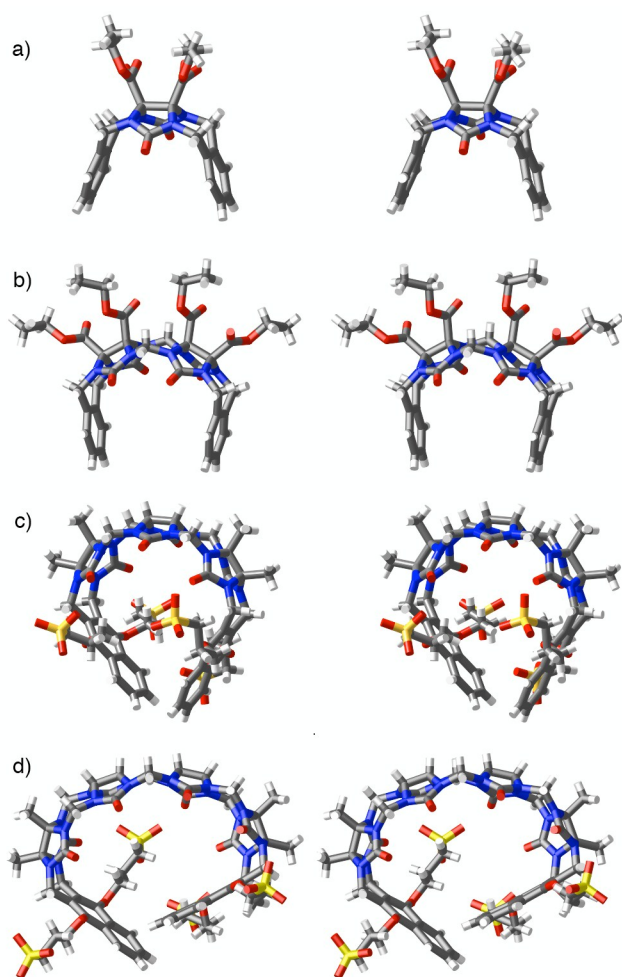
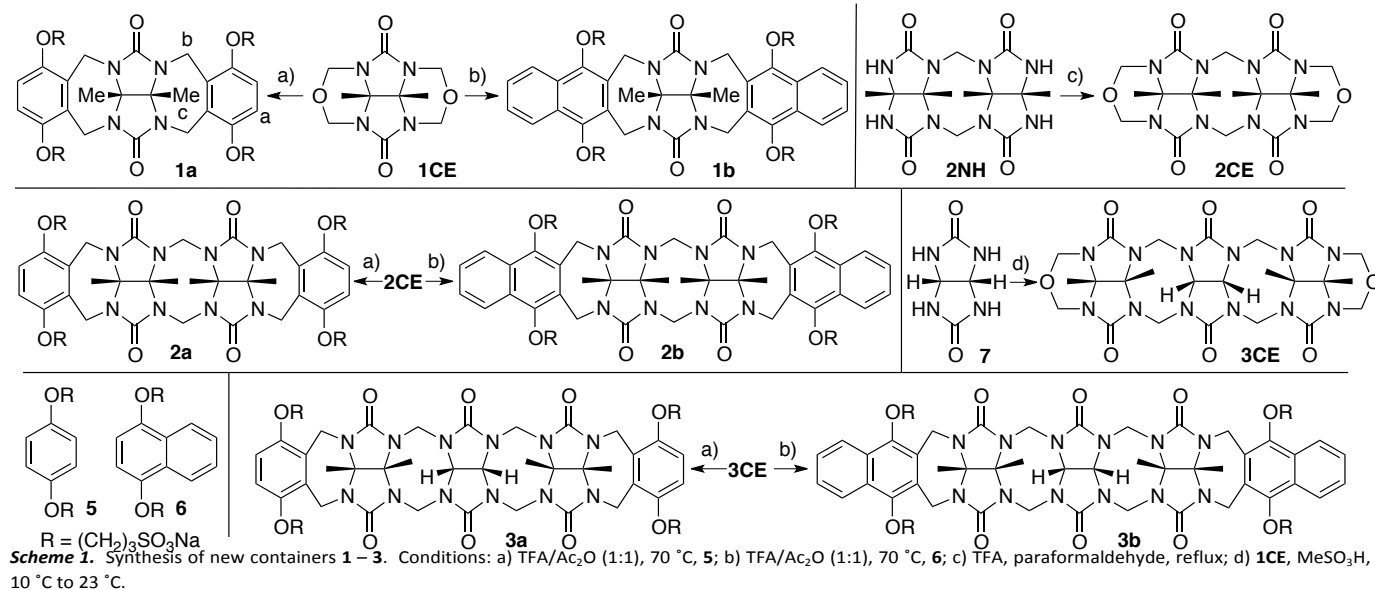
solubilizing groups<sup>22</sup> and aromatic sidewalls<sup>23</sup> on their function. In this paper we explore the influence of the length of the central glycoluril oligomer on their ability of acyclic CB[n]-type receptors **1** – **4** to solubilize four insoluble drugs (Figure 2).

## Results and discussion

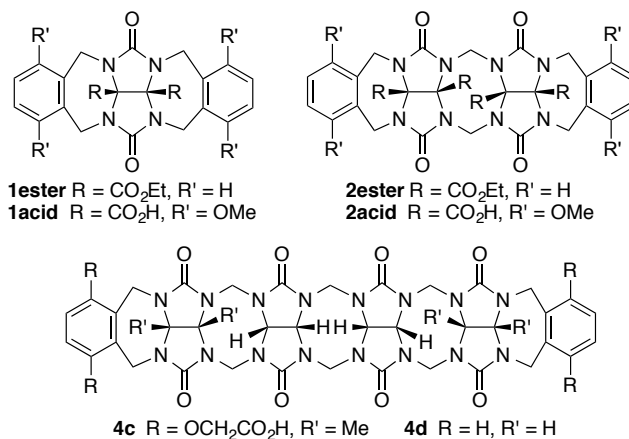
This results and discussion section is organized as follows. First, we present the synthesis of six new containers (**1** – **3**), studies of their inherent solubility, and studies of their tendency toward self-association. Next, we present the x-ray crystal structure of **3b** and compare it to the x-ray crystal structures of previously reported glycoluril monomer, dimer, and tetramer derived containers. Next, we report the ability of **1** – **3** to act as solubilizing agents for four insoluble drugs. Finally, we compare the trends in the solubilization data for **1** – **3** with that of previously reported **4a** and **4b**.

**Synthesis of Containers 1 – 3.** Scheme 1 shows the synthesis of new compounds **1** – **3**. For the preparation of molecular clips **1a** and **1b** we followed the path blazed by Nolte and co-workers and allowed glycoluril bis(cyclic ether) **1CE** to react with the corresponding dialkoxyaromatic walls (**5** and **6**) at 70 °C in TFA/Ac<sub>2</sub>O to deliver molecular clips **1a** and **1b** in high yield.<sup>21,24</sup> To prepare molecular clips **2a** and **2b** we first transformed the known glycoluril dimer **2NH**<sup>25</sup> into bis(cyclic ether) **2CE** by treatment with paraformaldehyde in TFA at reflux (40%). Subsequently, we reacted **2CE** with **5** or **6** in TFA/Ac<sub>2</sub>O at 70 °C to yield molecular clips **2a** and **2b** in good yield. For the preparation of acyclic CB[n] compounds **3a** and **3b** we first needed to prepare the glycoluril trimer **3CE**. The preparation of **3CE** was accomplished by reaction of glycoluril (**7**) with **1CE** in methanesulfonic acid with careful temperature control (10 °C for 2h and then 23 °C for 2h). Subsequently, we allowed **3CE** to react with **5** or **6** in TFA/Ac<sub>2</sub>O at 70 °C to give **3a** (48%) and **3b** (59%) in good yields.

We were fortunate to obtain the x-ray crystal structure of acyclic CB[n]-type receptor **3b** (Figure 3). Figure 3 also shows the x-ray crystal structure of previously prepared molecular clips **1ester** and **2ester** (Figure 4) and acyclic CB[n]-type receptor **4b** to illustrate the geometrical change that occurs across the homologous series of receptors **1** – **4** upon elongation of the glycoluril oligomer backbone. As can be readily seen, as one increases the number of glycoluril rings the receptors change from molecular clips with divergent to nearly parallel aromatic sidewalls (**1** and **2**) to containers with a well defined hydrophobic cavity despite their acyclic nature (**3** and **4**). Overall, as a result of the glycoluril trimer backbone, **3b** is C-shaped and the two naphthalene rings help to define a cavity that is occupied by a molecule of acetone in the crystal. The mean planes of the aromatic rings of **3b** are oriented at an average angle of 65.5° (range over 4 independent molecules in the crystal: 110.6° to 116.6°) and do not undergo either  $\pi$ - $\pi$  stacking or edge-to-face CH- $\pi$  interactions with each other. For example, molecular clips based on glycolurils (e.g. relatives of



**Figure 3.** Cross-eyed stereoviews of the x-ray crystal structures of: a) **1ester**,<sup>26</sup> b) **2ester**,<sup>27</sup> c) **3b**, d) **4b**.<sup>21</sup> Color code: C, gray; H, white; N, blue; O, red; S, yellow.



**Figure 4.** Structures of comparison compounds.

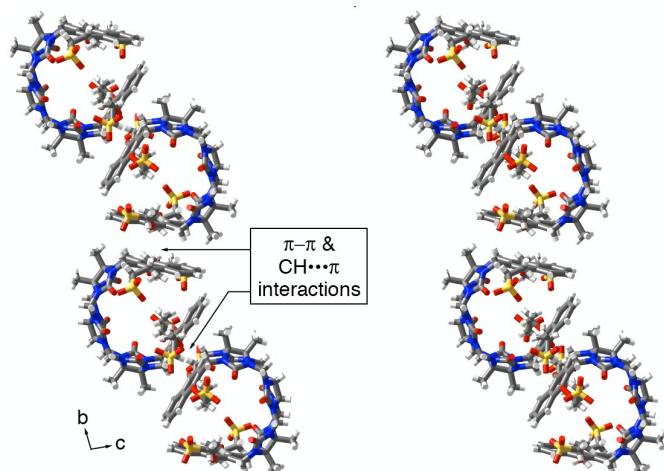
**1** feature outwardly oriented aromatic rings (35.9° interplanar angle) whereas those based on glycoluril dimers (e.g. relative to **2**) feature aromatic rings that are close to parallel to one another (18.3° interplanar angle). In contrast, the x-ray crystal structure of **4b** reported previously shows an 113.3° angle between the naphthalene rings and direct CH- $\pi$  interactions which helps to define a hydrophobic box.

The packing of **3b** in the crystal is intriguing (Figure 5). Analogous to what is observed for molecular clips based on glycoluril or glycoluril dimers,<sup>28</sup> the individual molecules of **3b** interact with one another via CH- $\pi$  and  $\pi$ - $\pi$  interactions between their naphthalene sidewalls in a head-to-tail fashion to yield linear tape like assemblies. The distance between the mean planes of the naphthalene rings is averages 3.66 Å (range 3.60 to 3.78 Å). These tapes extend along both the b-axis and the c-axis; they are alternately arranged in a criss-cross fashion reminiscent of building method of a log cabin home as one extends along the a-axis. The channels defined by the packing



of the linear assemblies are filled with the solubilizing arms and solvating water molecules.

**Inherent Solubility of 1 – 4.** Given our interest in assessing the performance of **1 – 3** as solubilizing excipients for insoluble drugs we first sought to measure their inherent solubility. For this purpose, we stir an excess of container with 20 mM phosphate buffered D<sub>2</sub>O and readjust the pD to 7.4 until equilibrium is reached and then remove excess insoluble container by centrifugation and filtration. An aliquot of the filtrate is diluted by a known factor and combined with a solution of benzene-1,3,5-tricarboxylic acid as internal standard (1.00 mM); the relative integrals of diagnostic resonances in the <sup>1</sup>H NMR spectrum for the container (**1a**: 6.87 ppm, **1b**: 7.56 ppm, **2a**: 6.99 ppm, **2b**: 7.84 ppm, **3a**: 7.02 ppm, **3b**: 7.95 ppm) versus those of the internal standard (8.38 ppm) were used to determine the inherent solubility of each container. The results are summarized in Table 1. As can be readily seen, the solubility of all the containers bearing dialkoxy-*o*-xylylene sidewalls is higher than 100 mM which is advantageous for their use as solubilizing excipients. In contrast, the solubility of containers with naphthalene sidewalls are variable. Containers **2b** and **3b** display high solubility (> 300 mM) whereas **1b** and **4b** are modest (38 and 14 mM, respectively).



**Figure 5.** Illustration of the packing of molecules of **3b** into linear assemblies along the b-axis. Color code: C, gray; H, white; N, blue; O, red; S, yellow.

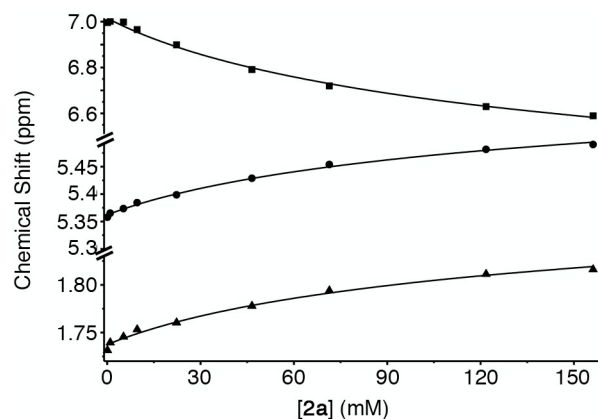
**Table 1.** Inherent solubility values of **1 – 4** and their self-association constant  $K_s$  determined in 20 mM sodium phosphate buffer, pD 7.4.

	<b>1a</b>	<b>1b</b>	<b>2a</b>	<b>2b</b>	<b>3a</b>	<b>3b</b>	<b>4a</b> <sup>a)</sup>	<b>4b</b> <sup>a)</sup>
Solub. (mM)	466	38	396	343	102	336	105	14
$K_s$ (M <sup>-1</sup> )	30	92	12	6	3	49	47	624

<sup>a)</sup> Values from the literature.<sup>21</sup>

**Containers 1 – 3 Do Not Self-associate Strongly.** In order for molecular containers to have high potential for use as solubilizing excipients they must not be strongly self-associated which would reduce their ability to form container•drug complexes. Accordingly, we studied the self-association of **1 –**

**3** by preparing solutions of different concentrations of **1 – 3** and monitoring the changes in the <sup>1</sup>H NMR chemical shifts. The chemical shifts of the protons on the aromatic sidewall were particularly sensitive to self-association. Figure 6 shows the changes in chemical shift of H<sub>a</sub>, H<sub>b</sub>, and H<sub>c</sub> as a function of [2a]. The changes in chemical shift were fitted to the standard two-fold self-association model<sup>21,29</sup> implemented within Scientist 3.0<sup>TM</sup> (Supporting Information) which yielded a self-association constant ( $K_s$ ) of 12 M<sup>-1</sup>. Table 1 gives the self-association constants measured for **1 – 3** (Supporting Information) and also presents the known values for **4** from the literature<sup>21</sup> for comparison. As expected, the  $K_s$  values measured for acyclic CB[n]-type receptors **3a** and **3b** are quite low (< 50 M<sup>-1</sup>) which is advantageous for their use as solubilizing agents. Given the well-known propensity for glycoluril and glycoluril dimer derived molecular clips to undergo self-association,<sup>13a,26,28a,28d,30</sup> we were surprised that the  $K_s$  values for **1** and **2** were low (< 100 M<sup>-1</sup>). For purposes of comparison, the structures and self-association constants measured previously for compounds **1acid** ( $K_s = 1840$  M<sup>-1</sup>)<sup>26</sup> and **2acid** ( $K_s = 41700$  M<sup>-1</sup>)<sup>13a</sup> which differ from **1a** and **2a** in the spatial orientation of their solubilizing groups are shown in Figure 4. Because the CO<sub>2</sub><sup>-</sup> solubilizing groups of **1acid** and **2acid** are on their convex face, unfavorable carboxylate-carboxylate electrostatic interactions are avoided upon formation of dimers **1acid**<sub>2</sub> and **2acid**<sub>2</sub>. In contrast, the SO<sub>3</sub><sup>-</sup> groups of **1 – 4** are directed toward each other within the putative dimeric species **1**<sub>2</sub> – **4**<sub>2</sub> which results in unfavorable electrostatic sulfonate-sulfonate interactions which decreases the propensity of **1 – 4** to dimerize. The self-association constant of **1a** (**2a**) is 61-fold (3500-fold) lower than that measured for **1acid** (**2acid**) which amounts to a destabilization of the dimer by 2.4 (4.8) kcal mol<sup>-1</sup> which we attribute to electrostatics. The recognition of the importance of electrostatic interactions that discourage self-association of **1 – 4** provides a rationale for the superior binding constants observed previously for **4a** and **4c** relative to **4d**<sup>12g,12j</sup> which



**Figure 6.** Plot of chemical shift versus [2a]. The solid line represents the best global fit of the data to a two-fold self-association model with  $K_s = 12$  M<sup>-1</sup>. Conditions: 20 mM sodium phosphate buffered D<sub>2</sub>O, pD 7.4, room temperature. Key: H<sub>a</sub>, ■; H<sub>b</sub>, ●; H<sub>c</sub>, ▲.

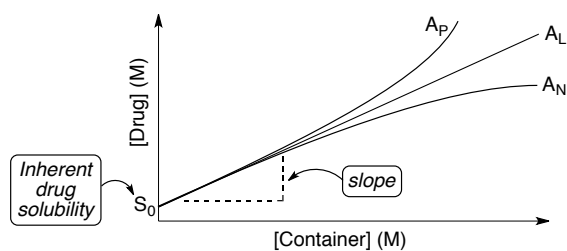


Figure 7. Idealized phase solubility diagrams.

$$K_a = \frac{\text{slope}}{S_0(1-\text{slope})} \quad (1)$$

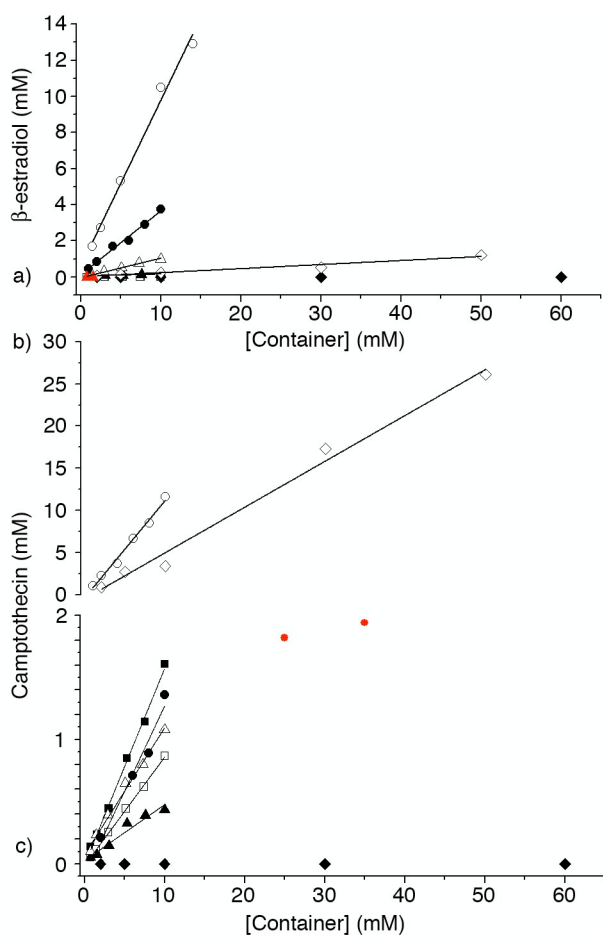


Figure 8. Phase solubility diagrams created for: a) 1 – 4 with  $\beta$ -estradiol, b) 1b and 4b with camptothecin, and c) 1a, 2, 3, and 4a with camptothecin. Conditions: 20 mM sodium phosphate buffer, room temperature, pD 7.4. Symbols: 1a,  $\blacklozenge$ ; 1b,  $\diamond$ ; 2a,  $\blacksquare$ ; 2b,  $\square$ ; 3a,  $\blacktriangle$ ; 3b,  $\triangle$ ; 4a,  $\bullet$ ; 4b,  $\circ$ . Data points colored red were not used for linear fitting.

lacks the anionic solubilizing groups which translates into the superior solubilizing abilities of 4a and 4b.<sup>23</sup>

**Construction of Phase Solubility Diagrams for 1 – 3 with Insoluble Drugs.** In order to assess the ability of 1 – 3 as solubilizing agents for insoluble drugs we created phase solubility diagrams (PSD)<sup>29,31</sup> for the six new containers 1 – 3. Phase solubility diagrams are plots of concentration of

container on the x-axis versus concentration of solubilized poorly soluble drug on the y-axis. Several types of PSDs are possible ( $A_L$ ,  $A_P$ ,  $A_N$ ; Figure 7) although linear ( $A_L$ -type) PSDs are most common for cyclodextrin molecular containers. Containers that display  $A_L$ -type PSDs behave according to equation 1 where  $S_0$  is the inherent solubility of the drug,  $K_a$  is the binding constant for the container•drug complex, and slope is the slope of the PSD.<sup>29</sup> In this paper, we generally observed  $A_L$ -type PSDs except for 2a and 2b with ziprasidone and 2a with PBS-1086 which displayed  $A_P$ -type behaviour. We consider PSDs with slopes  $\geq 0.5$  (e.g. a 50 mM solution of container solubilizes 25 mM drug) as indication that a given container is a very good solubilizing agent for a given drug. If we substitute slope = 0.5 into equation 1 then it is easy to show that  $K_a \times S_0 = 1$ .<sup>23</sup> Alternatively, if we want to solubilize a drug with inherent solubility of  $1 \times 10^{-5}$  M ( $1 \times 10^{-6}$  M) then the container must display a binding constant of  $1 \times 10^5$  M<sup>-1</sup> ( $1 \times 10^6$  M<sup>-1</sup>) to achieve a slope of 0.5.

In this section we report the phase solubility behavior of 1 – 3 with four insoluble drugs (camptothecin, PBS-1086,  $\beta$ -estradiol, and ziprasidone) which we have previously studied with 4a and 4b.<sup>21,23</sup> To create the PSDs we prepare a solution of container of known concentration and stir it with an excess of solid insoluble drug. After equilibrium is reached, the excess of insoluble drug is removed by centrifugation and filtration. The concentration of drug in the filtrate is determined by <sup>1</sup>H NMR spectroscopy after addition of benzene-1,3,5-tricarboxylic acid (1.00 mM) as a non-binding internal standard using the relative integrals of diagnostic resonances of the drug versus those of the internal standard. Figure 8a shows the PSDs for solutions of containers 1 – 4 with the insoluble drug  $\beta$ -estradiol. As can be readily seen most of the PSDs are of the  $A_L$ -type and it is therefore appropriate to perform a linear fitting of the data to determine the value of the slope. The slope values range from 0 to 0.92 for 4b which indicates that the affinity of the various containers toward  $\beta$ -estradiol differ significantly. Next, we substituted the measured slope values and the known inherent solubilities ( $S_0$ )<sup>23</sup> into equation 1 to determine the affinity constant ( $K_a$ , M<sup>-1</sup>) for the interaction of each container• $\beta$ -estradiol complex (Table 2). In Table 2, the values of slope and  $K_a$  and their uncertainty are given to two significant figures which reflects the limitations of phase solubility measurements. Similar experiments were performed for camptothecin with containers 1 – 3 and compared with the data previously reported for 4 (Figure 8b,c and Table 2).<sup>21,23</sup> Figure 8c shows that the PSD for 4a and camptothecin displays a plateau region above [4a] = 10 mM which reflects the limited solubility of the 4a•camptothecin complex. The data points shown in red (Figure 8c) are excluded from the linear fitting used to calculate slope and  $K_a$ . Using the same procedures, we generated PSDs for systems comprising containers 1 – 3 with ziprasidone and the developmental anti-cancer agent PBS-1086<sup>32</sup> and calculated  $K_a$  values (Table 1 and Supporting Information) for the container•drug complexes.

**Interpretation of the Trends in the  $K_a$  values and Solubilization Efficiency.** This section discusses the trends in

the  $K_a$  values as a function of the structural variables of the containers and the guests.

*Influence of the Number of Glycoluril Rings.* As shown in Figure 3, the crystal structures of **1** – **4** demonstrate that

**Table 2.** Inherent solubility ( $S_0$ ,  $\mu\text{M}$ ) and slope values calculated from the linear region of the PSDs for containers **1** – **4** with the four poorly soluble drugs. The corresponding  $K_a$  ( $\text{M}^{-1}$ ) values were calculated using equation 1.

		Camptothecin	Ziprasidone	PBS-1086	$\beta$ -estradiol
	$S_0$	54 $\pm$ 3.9	63 $\pm$ 3.5	4.5 $\pm$ 0.90	8.8 $\pm$ 0.42
<b>1a</b>	slope	-	-	-	-
	$K_a$	-	-	-	-
<b>1b</b>	slope	0.54 $\pm$ 0.032	-	-	0.022 $\pm$ 0.0026
	$K_a$	2.2( $\pm$ 0.16) $\times 10^4$	-	-	2.6( $\pm$ 0.32) $\times 10^3$
<b>2a</b>	slope	0.16 $\pm$ 0.0043	NL	NL	-
	$K_a$	3.5( $\pm$ 0.27) $\times 10^3$	-	-	-
<b>2b</b>	slope	0.087 $\pm$ 0.0012	NL	0.046 $\pm$ 0.0040	-
	$K_a$	1.8( $\pm$ 0.13) $\times 10^3$	-	1.1( $\pm$ 0.24) $\times 10^4$	-
<b>3a</b>	slope	0.045 $\pm$ 0.0051	0.070 $\pm$ 0.012	0.032 $\pm$ 0.0018	0.013 $\pm$ 0.0011
	$K_a$	8.7( $\pm$ 1.2) $\times 10^2$	1.2( $\pm$ 0.22) $\times 10^3$	7.4( $\pm$ 1.5) $\times 10^3$	1.5( $\pm$ 0.14) $\times 10^3$
<b>3b</b>	slope	0.10 $\pm$ 0.0051	0.38 $\pm$ 0.026	0.14 $\pm$ 0.0056	0.11 $\pm$ 0.0058
	$K_a$	2.0( $\pm$ 0.18) $\times 10^3$	9.8( $\pm$ 0.95) $\times 10^3$	3.6( $\pm$ 0.74) $\times 10^4$	1.4( $\pm$ 0.10) $\times 10^4$
<b>4a</b> <sup>a)</sup>	slope	0.14 $\pm$ 0.0070	1.1 $\pm$ 0.19	0.71 $\pm$ 0.027	0.35 $\pm$ 0.019
	$K_a$	2.9( $\pm$ 0.26) $\times 10^3$	TL	5.5( $\pm$ 1.2) $\times 10^5$	6.2( $\pm$ 0.48) $\times 10^4$
<b>4b</b> <sup>a)</sup>	slope	1.1 $\pm$ 0.059	0.43 $\pm$ 0.052	0.89 $\pm$ 0.0043	0.92 $\pm$ 0.053
	$K_a$	TL	1.2( $\pm$ 0.20) $\times 10^4$	1.9( $\pm$ 0.38) $\times 10^6$	1.3( $\pm$ 0.86) $\times 10^6$

NL = non-linear PSD; – = could not be determined because the slope is too small to measure. TL = too large to be determined from PSD. a) Lit. data.<sup>21,23</sup>

compounds **1** and **2** are molecular clips with divergent and slightly convergent aromatic sidewalls, respectively. In contrast, containers **3** and **4** are more properly defined as acyclic CB[n]-type receptors because they feature more fully formed ureidyl C=O portals and closed cavities that are fully defined by the glycoluril rings and the aromatic sidewalls. Accordingly, it is appropriate to compare the solubilization properties of **1** and **2** and separately, **3** and **4**. We find that container **1a** is uniformly unsuccessful as a solubilizing agent, whereas container **2a** is able to solubilize camptothecin, ziprasidone, and PBS-1086. We attribute the better solubilizing ability of **2a** to the more nearly parallel alignment of its aromatic walls (centroid to centroid distance = 7.40 Å) which preorganizes it to engage in  $\pi$ - $\pi$  interactions with drugs that contain aromatic rings. In contrast, the behavior of containers **1b** and **2b** toward the four drugs is drug dependent. For example, container **1b** performs better for camptothecin and  $\beta$ -estradiol but **2b** performs better for ziprasidone and PBS-1086. In this regard it is noteworthy that the PSDs for **2a** and **2b** with ziprasidone are non-linear which is indicative of higher order container $_n$ •drug complexes. The behavior of acyclic CB[n]-type containers **3** and **4** toward the four drugs exhibit clear trends. For example, container **3a** binds less strongly ( $K_a \approx 10^3 - 10^4 \text{ M}^{-1}$ ) to all four drugs than **4a** does ( $2.9 \times 10^3 < K_a < 5.5 \times 10^5 \text{ M}^{-1}$ ). We attribute this result to the larger hydrophobic cavity of **4a** relative to **3a** and the more fully formed ureidyl C=O portals of **4a** which results in stronger ion-dipole interactions with cationic drugs (e.g. ziprasidone). Similarly, container **3b** ( $2.0 \times 10^3 < K_a < 3.6 \times 10^4 \text{ M}^{-1}$ ) does not perform as well as **4b** ( $1.2 \times 10^4 < K_a < 1.9 \times 10^6 \text{ M}^{-1}$ ) as a solubilizing agent for these four drugs. Accordingly, we conclude that

container **4** is a more efficient solubilizing agent than container **3** although the relative *in vivo* efficacy of drugs formulated by the different containers will depend on the ability of the drugs to be released by dilution and competition from endogenous cationic small molecules (e.g. spermine).<sup>33</sup>

*Influence of Aromatic Sidewall.* The influence of the nature of the aromatic sidewall (e.g. benzene versus naphthalene) is clear cut for containers **1**, **3**, **4**. In most cases the containers with the longer aromatic sidewall (e.g. naphthalene) display higher  $K_a$  values toward the drugs. For example, container **1b** binds nicely ( $K_a = 2.2 \times 10^4$  and  $2.6 \times 10^3 \text{ M}^{-1}$ ) toward camptothecin and  $\beta$ -estradiol whereas the binding of **1a** to these drugs could not be detected. Similarly, the ratio of the  $K_a$  values of **3b** versus **3a** toward camptothecin (2.3), ziprasidone (8.2), PBS-1086 (4.9), and  $\beta$ -estradiol (9.3) indicate that **3b** is a significantly better host than **3a**. Containers **4b** and **4a** display a similar trend with the ratio of  $K_a$  values for **4b** versus **4a** toward camptothecin (>6.4), PBS-1086 (3.5), and  $\beta$ -estradiol (21). Interestingly, ziprasidone which is both narrow and cationic at pD 7.4 prefers to bind to the smaller cavity of container **4a** relative to **4b**. We conclude that the containers with substituted naphthalene sidewalls generally outperform those with *o*-xylylene sidewalls because they possess larger hydrophobic cavities which should increase the number of solvating  $\text{H}_2\text{O}$  molecules expelled upon binding<sup>6d,34</sup> and result in the formation of  $\pi$ - $\pi$  interactions between larger  $\pi$ -surfaces particularly for insoluble drugs that contain aromatic rings.

## Conclusions

In summary, we have reported the synthesis of a series of molecular container compounds (**1** – **3**) that differ in the number of glycoluril rings that connect the two terminal substituted *o*-xylylene or naphthalene sidewalls. Compounds **1** – **3** display very good aqueous solubility (> 38 mM) and somewhat surprisingly do not undergo significant self-association in aqueous solution ( $K_s \leq 92 \text{ M}^{-1}$ ). We trace the low values of  $K_s$  observed for **1** and **2** to unfavorable sulfonate-sulfonate electrostatic interactions (2.4 to 4.8 kcal mol<sup>-1</sup>) that would occur in the putative dimeric complexes **1**<sub>2</sub> and **2**<sub>2</sub>. The x-ray crystal structure of acyclic CB[n] type receptor **3b** shows a cavity shaped by its two naphthalene walls that do not engage in  $\pi$ - $\pi$  or CH $\cdots\pi$  interactions. PSDs were created for **1** – **3** with four insoluble drugs (camptothecin, ziprasidone, PBS-1086, and  $\beta$ -estradiol) and compared with the PSDs measured previously for **4a** and **4b**. We find that the acyclic CB[n]-type containers containing larger numbers of glycoluril rings (e.g. **4**) and the larger naphthalene sidewalls (e.g. **4a** versus **4b**) are generally superior solubilizing agents for insoluble drugs. For the molecular clip receptors **1** and **2** the results are less clear cut although the naphthalene walled compounds often display higher  $K_a$  values than the *o*-xylylene walled analogues and more often exhibit the desirable A<sub>L</sub>-type PSDs. When combined with our previous studies on the influence of the nature of the solubilizing group (e.g. anionic *versus* neutral *versus* cationic) and the aromatic sidewalls (benzene, two isomeric naphthalenes, alkylated variants), this study allows us to conclude that compounds **4a** and **4b** are most efficient as solubilizing agents for insoluble drugs and are best positioned for further development as solubilizing excipients for real world pharmaceutical applications. In this regard the higher values of  $K_a$  exhibited by acyclic CB[n]-type receptors compared to HP- $\beta$ -cyclodextrin promises to broaden the range of drugs that can be efficiently solubilized using molecular container technology and to do so at lower concentrations of container.

## Experimental

**General Experimental.** Starting materials were purchased from commercial suppliers and were used without further purification or were prepared by literature procedures. Compounds **1CE** and **2NH** were prepared according to literature procedures.<sup>21,25</sup> Melting points were measured on a Meltemp apparatus in open capillary tubes and are uncorrected. IR spectra were measured on a JASCO FT/IR 4100 spectrometer and are reported in cm<sup>-1</sup>. NMR spectra were measured on commercial spectrometers operating at 600 MHz and 400 MHz for <sup>1</sup>H and 125 MHz for <sup>13</sup>C. Mass spectrometry was performed using a JEOL AccuTOF electrospray instrument (ESI) or on a Bruker 12T Apex IV FT-ICR mass spectrometer.

**Compound 1a:** A solution of dimethylglycoluril bis(cyclic ether) **1CE** (0.650 g, 2.56 mmol) in TFA (7 mL) was mixed with compound **5** (3.96 g, 10.2 mmol). The mixture was stirred and heated at 70 °C for 3 h and then was poured into MeOH (70

mL). The solid was collected by filtration and was dried under high vacuum. The crude solid was recrystallized two times from a mixture of water and acetone (1:2, v/v, 20 mL). The solid was dissolved in water (10 mL) and adjusted to pH = 7 by adding 1 M aqueous NaOH. The solvent was removed by rotary evaporation and then the solid was further dried under high vacuum to yield compound **1a** (2.16 g, 83%) as a white solid. M.p. > 280 °C. IR (ATR, cm<sup>-1</sup>): 2925w, 1684s, 1477s, 1437m, 1355w, 1311m, 1261s, 1195s, 1095m, 1051s, 800m, 768m, 616m, 532m. <sup>1</sup>H NMR (600 MHz, D<sub>2</sub>O):  $\delta$  6.85 (s, 4H), 5.18 (d,  $J$  = 16.2, 4H), 4.14 (d,  $J$  = 16.2, 4H), 4.05 – 3.90 (m, 8H), 3.15 – 2.95 (m, 8H), 2.20 – 2.05 (m, 8H), 1.77 (s, 6H). <sup>13</sup>C NMR (125 MHz, D<sub>2</sub>O, 1, 4-dioxane as internal reference):  $\delta$  157.2, 149.4, 127.6, 114.4, 78.2, 68.2, 47.4, 34.4, 23.2, 15.0 (10 out of the 12 expected resonances are observed). High-Res MS (ESI):  $m/z$  925.1607 ([M – 4Na + 3H]<sup>+</sup>, C<sub>34</sub>H<sub>45</sub>N<sub>4</sub>O<sub>18</sub>S<sub>4</sub>, calculated for 925.1612)

**Compound 1b:** A solution of dimethylglycoluril bis(cyclic ether) **1CE** (0.650 g, 2.56 mmol) in TFA (7 mL) was mixed with compound **6** (4.57 g, 10.2 mmol). The mixture was stirred and heated at 70 °C for 3 h and then was poured into MeOH (70 mL). The solid was collected by filtration and was dried under high vacuum. The crude solid was recrystallized twice from a mixture of water and acetone (1:2, v/v, 20 mL). The solid was dissolved in water (10 mL) and adjusted to pH = 7 by adding 1 M aqueous NaOH. The solvent was removed by rotary evaporation and then the solid was further dried under high vacuum to yield compound **1b** (2.60 g, 91%) as a white solid. M.p. > 280 °C. IR (ATR, cm<sup>-1</sup>): 2939w, 2858w, 1690m, 1468s, 1426w, 1344m, 1307w, 1181s, 1047s, 1029s, 952w, 766m, 738m. <sup>1</sup>H NMR (600 MHz, D<sub>2</sub>O):  $\delta$  8.00 – 7.95 (m, 4H), 7.60 – 7.55 (m, 4H), 5.20 (d,  $J$  = 16.2, 4H), 4.39 (d,  $J$  = 16.2, 4H), 3.65 – 3.55 (m, 8H), 2.95 – 2.75 (m, 8H), 2.15 – 2.05 (m, 8H), 1.81 (s, 6H). <sup>13</sup>C NMR (125 MHz, D<sub>2</sub>O, 1, 4-dioxane as internal reference):  $\delta$  157.1, 147.8, 126.8, 125.9, 121.3, 78.2, 73.7, 47.6, 36.0, 24.6, 15.5 (11 out of the 14 expected resonances were observed). High-Res MS (ESI):  $m/z$  1091.1392 ([M – Na]<sup>+</sup>, C<sub>42</sub>H<sub>46</sub>N<sub>4</sub>Na<sub>3</sub>O<sub>18</sub>S<sub>4</sub>, calculated for 1091.1377).

**Compound 2CE:** Compound **2NH** (2.12 g, 5.81 mmol) was dissolved in TFA (58 mL). Paraformaldehyde (872 mg, 29.04 mmol) was added and the reaction mixture stirred and heated at 75-80 °C for 20 h in a pre-heated oil bath. The reaction mixture was poured into MeOH (400 mL) and the resulting precipitate was filtered and washed with MeOH. Compound **2CE** was obtained as white solid (1.04 g, 2.33 mmol, 40%). M.p. > 300 °C. IR (ATR, cm<sup>-1</sup>): 2999w, 2960w, 2875w, 1722s, 1468m, 1440s, 1376m, 1302s, 1232m, 1093m, 1067m, 1001m, 949m, 917m, 881m, 768m, 737m, 668w. <sup>1</sup>H NMR (400 MHz, DMSO-*d*<sub>6</sub>): 5.47 (d,  $J$  = 15.8, 2H), 5.15 (d,  $J$  = 11.0, 4H), 4.87 (d,  $J$  = 11.0, 4H), 4.33 (d,  $J$  = 15.8, 2H), 1.83 (s, 6H), 1.65 (s, 6H). <sup>13</sup>C NMR (125 MHz, DMSO-*d*<sub>6</sub>): 154.5, 76.4, 72.2, 70.6, 44.3, 17.9, 16.7. HR-MS (ESI):  $m/z$  449.1891 ([M + H]<sup>+</sup>, C<sub>18</sub>H<sub>24</sub>N<sub>8</sub>O<sub>6</sub>, calcd. 449.1897).

**Compound 3CE:** Compound **7** (1.196 g, 8.4 mmol) was dissolved in methane sulfonic acid (40 mL) under N<sub>2</sub>



atmosphere. The solution was cooled to 8-12 °C in an ice bath and then **1CE** (3.996 g, 15.7 mmol) was added at once. The reaction mixture was stirred at 8-12 °C for 2 h and then the ice bath was removed at the reaction was stirred at room temperature for another 2 h. The reaction was poured into precooled (5 °C) acetone (700 mL) and the resulting precipitate was obtained by filtration. The solid was washed with about 100 mL acetone and then transferred while still wet into a mixture of acetonitrile and water (1:1 (v:v), 100 mL) and sonicated. The resulting precipitate was filtered and suspended in formic acid (2 mL). Finally the solid was thoroughly dried on the frit, washed with water and methanol and dried under vacuum to give **3CE** as a white solid (204 mg, 0.332 mmol, 4%). M.p. > 300 °C. IR (ATR, cm<sup>-1</sup>): 3551w, 3455w, 3384w, 2990w, 2949w, 1718s, 1702s, 1656w, 1465m, 1425m, 1315s, 1271m, 1239s, 1181m, 1074m, 1013s, 918m, 851s, 788m, 735m, 663w. <sup>1</sup>H NMR (400 MHz, DMSO-d<sub>6</sub>, 30 °C): 5.58 – 5.52 (m, 6H), 5.16 (d, *J* = 10.9 Hz, 2H), 4.85 (d, *J* = 11.0 Hz, 4H), 4.24 (d, *J* = 15.1 Hz, 4H), 1.81 (s, 6H), 1.64 (s, 6H). <sup>13</sup>C NMR (125 MHz, DMSO-d<sub>6</sub>): δ 155.2, 154.8, 154.7, 77.1, 72.4, 70.5, 69.9, 48.5, 17.7, 15.7. HR-MS (ESI): *m/z* 625.2363 ([M + H]<sup>+</sup>), C<sub>24</sub>H<sub>30</sub>N<sub>12</sub>O<sub>8</sub>, calcd. 615.2388.

**Compound 2a:** Compound **2CE** (448 mg, 1.0 mmol) was dissolved in TFA/Ac<sub>2</sub>O (1:1 (v:v), 8.0 mL). Compound **5** (916 mg, 2.30 mmol) was added. The reaction was stirred and heated in a preheated oil bath for 3h at 70 °C. Then the mixture was poured into acetone (75 mL). The precipitate was collected by centrifugation. The solid was dissolved in water (10 mL) and precipitated by the addition of EtOH (75 mL). The precipitate was collected by centrifugation, then redissolved in water (40 mL) and reprecipitated by the addition of acetone (120 mL). The precipitate was collected by filtration, dissolved in water and the pH of the solution adjusted to 7 by addition of 1 M aqueous NaOH. The solvent was removed under reduced pressure and the residue dried under vacuum. Compound **2a** was obtained as brownish solid (533 mg, 0.475 mmol, 48%). M.p. > 300 °C. IR (ATR, cm<sup>-1</sup>): 3450w, 2946w, 2876w, 1706s, 1464s, 1391w, 1298m, 1179s, 1039s, 883w, 800m, 754m, 657w, 594m. <sup>1</sup>H NMR (400 MHz, D<sub>2</sub>O): 6.98 (s, 4H), 5.35 (d, *J* = 16.2, 2H), 5.22 (d, *J* = 16.2, 4H), 4.32 (d, *J* = 16.2, 2H), 4.11 (d, *J* = 16.2, 4H), 4.10 – 4.00 (m, 4H), 3.90 – 3.80 (m, 4H), 3.20 – 3.00 (m, 8H), 2.25 – 2.10 (m, 8H), 1.74 (s, 6H), 1.67 (s, 6H). <sup>13</sup>C NMR (125 MHz, D<sub>2</sub>O, 1,4-dioxane as internal reference): δ 156.5, 150.9, 128.9, 116.7, 79.4, 77.5, 70.3, 48.8, 44.3, 35.5, 25.3, 16.2, 16.1. HR-MS (ESI): *m/z* ([M - Na]<sup>-</sup>), 1185.1880, C<sub>42</sub>H<sub>52</sub>N<sub>8</sub>O<sub>20</sub>S<sub>4</sub>Na<sub>3</sub>, calcd. 1185.1868.

**Compound 2b:** Compound **2CE** (448.4 mg, 1.00 mmol) was dissolved in TFA/Ac<sub>2</sub>O (1:1 (v:v), 6.5 mL). Compound **6** (1.79 g, 4.00 mmol) was added and the reaction mixture stirred and heated for 3 h at 75-80 °C in a pre-heated oil bath. The solution was poured into MeOH (75 mL) and filtered. The residue was dissolved in water (10 mL) and then acetone (50 mL) was added. The precipitate was obtained by filtration and then dissolved in water. The pH of the solution was adjusted to 7 by the addition of 1 M aqueous NaOH. The solvent was removed under reduced pressure and the residue was dried in high

vacuum yielding compound **2b** as an off-white solid (752 mg, 0.57 mmol, 57%). M.p. > 300 °C. IR (ATR, cm<sup>-1</sup>): 3446m, 2945w, 2884w, 1715s, 1463s, 1344m, 1308m, 1267w, 1176s, 1098m, 1033s, 901w, 820w, 756m, 595m. <sup>1</sup>H NMR (400 MHz, D<sub>2</sub>O): 7.90 – 7.75 (m, 8H), 5.35 (d, *J* = 16.3, 2H), 5.18 (d, *J* = 16.2, 4H), 4.34 (d, *J* = 16.3, 2H), 4.23 (d, *J* = 16.2, 4H), 3.75 – 3.65 (m, 4H), 3.30 – 3.20 (m, 4H), 3.15 – 3.05 (m, 4H), 3.00 – 2.85 (m, 4H), 2.10 – 1.95 (m, 4H), 1.90 – 1.75 (m, 4H), 1.75 (s, 6H), 1.70 (s, 6H). <sup>13</sup>C NMR (150 MHz, D<sub>2</sub>O, 1,4-dioxane as internal reference): δ 156.2, 148.2, 128.2, 128.1, 127.4, 123.4, 78.8, 77.4, 74.0, 48.7, 44.0, 36.5, 25.9, 16.5, 16.4. HR-MS (ESI): *m/z* 677.0957 ([M + Na]<sup>2+</sup>), C<sub>50</sub>H<sub>56</sub>N<sub>8</sub>O<sub>20</sub>S<sub>4</sub>Na<sub>5</sub>, calcd. 677.0940.

**Compound 3a:** To a solution of compound **3CE** (0.91 g, 1.48 mmol) in TFA/Ac<sub>2</sub>O (1:1 (v:v), 20.8 mL) compound **5** (1.37 g, 3.44 mmol) was added. The mixture was stirred and heated at 75-80 °C for 3 h and then poured into MeOH (75 mL). The solid was collected by centrifugation. The residue was washed twice with MeOH (45 mL) and dried under vacuum. The off-white solid was dissolved in water and the pH was adjusted to 7 by addition of 1 M aqueous NaOH. The solvent was removed under reduced pressure. The residue was mixed with acetone (100 mL) and the solid collected by centrifugation. The solid was washed once with acetone (45 mL) and MeOH (45 mL) and then dissolved in water. The pH was checked to be at 7. The solvent was removed under reduced pressure and the residue dried under vacuum to yield compound **3a** as a yellow solid (983 mg, 0.715 mmol, 48%). M.p. > 300 °C. IR (ATR, cm<sup>-1</sup>): 3444w, 2941w, 1713s, 1466s, 1380w, 1316m, 1237m, 1183s, 1091m, 1037s, 976w, 922w, 841m, 789m, 729w, 593m. <sup>1</sup>H NMR (D<sub>2</sub>O, 400 MHz): 7.02 (s, 4H), 5.51 (d, *J* = 15.8, 4H), 5.40 (s, 2H), 5.30 (d, *J* = 16.3, 4H), 4.25 (d, *J* = 15.8, 4H), 4.19 (d, *J* = 16.3, 4H), 4.15 – 4.00 (m, 8H), 3.20 – 3.05 (m, 8H), 2.25 – 2.15 (m, 8H), 1.77 (s, 6H), 1.74 (s, 6H). <sup>13</sup>C NMR (125 MHz, D<sub>2</sub>O dioxane as internal reference): δ 157.6, 157.00, 150.9, 128.8, 116.0, 79.6, 78.3, 71.8, 69.7, 49.0, 48.9, 35.6, 25.3, 16.6, 15.8. HR-MS (ESI): *m/z* 1353.2513 ([M - Na + 2H]<sup>+</sup>), C<sub>48</sub>H<sub>60</sub>N<sub>12</sub>O<sub>22</sub>S<sub>4</sub>Na<sub>3</sub>, calcd. 1353.2521.

**Compound 3b:** Compound **3CE** (614.6 mg, 1.00 mmol) was dissolved in TFA/Ac<sub>2</sub>O (1:1 (v:v), 6.5 mL). Compound **6** (1.79 g, 4.00 mmol) was added and the reaction mixture stirred and heated for 3 h at 72-80 °C in a pre-heated oil bath. The suspension was filtered using a glass frit and the residue washed with MeOH. The solid was dissolved in water (20 mL) and precipitated by the addition of acetone (80 mL). The precipitate was obtained by filtration, and the solid was washed with acetone and then dissolved in water. The pH of the solution was adjusted to 7 by addition of 1 M aqueous NaOH. The solvent was removed under reduced pressure. Finally, the yellowish solid was dried under vacuum to yield compound **3b** as a yellowish solid (867 mg, 58.8 mmol, 59%). M.p. > 300 °C, IR (ATR, cm<sup>-1</sup>): 3441w, 2943w, 2881w, 1716s, 1465s, 1382w, 1345m, 1313m, 1177s, 1079m, 1035s, 950m, 881w, 827m, 788m, 724m, 668m. <sup>1</sup>H NMR (400 MHz, D<sub>2</sub>O): 8.00 – 7.90 (m, 8H), 5.50 (d, *J* = 15.9, 4H), 5.41 (s, 2H), 5.24 (d, *J* = 16.4, 4H), 4.30 – 4.20 (m, 8H), 4.00-3.90 (br m, 4H), 3/55-3/45 (br m,

4H), 3.08 (t,  $J = 8.0$ , 8H), 2.10-1.95 (br m, 8H), 1.78 (s, 6H), 1.76 (s, 6H).  $^{13}\text{C}$  NMR (150 MHz,  $\text{D}_2\text{O}$ , dioxane as internal reference)  $\delta$  157.5, 156.9, 148.8, 128.6, 128.5, 127.6, 123.8, 79.4, 78.1, 74.7, 71.6, 48.8, 36.9, 26.0, 16.5, 16.2 (16 of the 17 expected resonances were observed). HR-MS (ESI):  $m/z$  1453.2811 ( $[\text{M} - \text{Na} + 2\text{H}]^+$ ),  $\text{C}_{56}\text{H}_{64}\text{N}_{12}\text{O}_{22}\text{Na}_2$ , calcd. 1453.2834.

## Acknowledgements

L.I. thanks the National Institutes of Health (CA168365 to L.I.) for financial support. V.S. thanks the Czech Science Foundation (13-15576S) and the Czech Ministry of Education (LM2011028 and LO1214) for financial support. B.Z. thanks the University of Maryland for a Wylie dissertation fellowship. L.G. thanks the program of Employment of Newly Graduated Doctors of Science for Scientific Excellence (Grant No. CZ.1.07/2.3.00/30.0009), co-financed by the European Social Fund and the Czech Republic's state budget. We thank Timothy Fouts, Jeffrey Meshulam, and Kathryn Bobb (RelMD) for samples of PBS-1086.

## Notes and references

<sup>†</sup>Department of Chemistry and RECETOX, Masaryk University, Kamenice 5, 625 00 Brno, Czech Republic, <sup>‡</sup>Department of Chemistry and Biochemistry, University of Maryland, College Park, Maryland 20742, United States.

\*Please address correspondence to Lyle Isaacs (lisaacs@umd.edu) or Vladimir Sindelar (sindelar@chemi.muni.cz).

<sup>†</sup>Electronic Supplementary Information (ESI) available: Details of the synthesis and characterization of **1** – **3**, solubility determinations, and phase solubility diagrams. Crystallographic information files (.cif) for **3b** (CCDC1045907). See DOI: 10.1039/b000000x/

1) (a) C. A. Lipinski *J. Pharmacol. Toxicol. Methods* 2000, **44**, 235-249; (b) D. J. Hauss *Adv. Drug Delivery Rev.* 2007, **59**, 667-676.  
 2) (a) C. Leuner and J. Dressman *Eur. J. Pharmaceut. Biopharmaceut.* 2000, **50**, 47-60; (b) R. H. Muller and C. M. Keck *J. Biotechnol.* 2004, **113**, 151-170.  
 3) (a) A. K. Patri, J. F. Kukowska-Latallo and J. R. Baker *Adv. Drug Delivery Rev.* 2005, **57**, 2203-2214; (b) N. Blagden, M. de Matas, P. T. Gavan and P. York *Adv. Drug Delivery Rev.* 2007, **59**, 617-630; (c) A. T. M. Serajuddin *Adv. Drug Delivery Rev.* 2007, **59**, 603-616; (d) V. J. Stella and K. W. Nti-Addae *Adv. Drug Delivery Rev.* 2007, **59**, 677-694.  
 4) (a) K. Okimoto, R. A. Rajewski, K. Uekama, J. A. Jona and V. J. Stella *Pharm. Res.* 1996, **13**, 256-264; (b) R. A. Rajewski and V. J. Stella *J. Pharm. Sci.* 1996, **85**, 1142-1169; (c) V. J. Stella and R. A. Rajewski *Pharm. Res.* 1997, **14**, 556-567; (d) M. V. Rekharsky and Y. Inoue *Chem. Rev.* 1998, **98**, 1875-1917.  
 5) (a) W. A. Freeman, W. L. Mock and N.-Y. Shih *J. Am. Chem. Soc.* 1981, **103**, 7367-7368; (b) J. Kim, I.-S. Jung, S.-Y. Kim, E. Lee, J.-K. Kang, S. Sakamoto, K. Yamaguchi and K. Kim *J. Am. Chem. Soc.* 2000, **122**, 540-541; (c) A. Day, A. P. Arnold, R. J. Blanch and B. Snushall *J. Org. Chem.* 2001, **66**, 8094-8100; (d) S. Liu, P. Y. Zavalij and L. Isaacs *J. Am. Chem. Soc.* 2005, **127**, 16798-16799; (e) A. I. Day, R. J. Blanch, A. P. Arnold, S. Lorenzo, G. R. Lewis and I. Dance *Angew. Chem., Int. Ed.* 2002, **41**, 275-277; (f) X.-J. Cheng, L.-L. Liang, K. Chen, N.-N. Ji, X. Xiao, J.-X. Zhang, Y.-Q. Zhang, S.-F. Xue, Q.-J. Zhu, X.-L. Ni and Z. Tao *Angew. Chem., Int. Ed.* 2013, **52**, 7252-7255.  
 6) (a) W. L. Mock and N.-Y. Shih *J. Org. Chem.* 1986, **51**, 4440-4446; (b) S. Liu, C. Ruspici, P. Mukhopadhyay, S. Chakrabarti, P. Y. Zavalij and L. Isaacs *J. Am. Chem. Soc.* 2005, **127**, 15959-15967; (c) M. V. Rekharsky, T. Mori, C. Yang, Y. H. Ko, N. Selvapalam, H. Kim, D. Sobransingh, A. E. Kaifer, S. Liu, L. Isaacs, W. Chen, S. Moghaddam, M. K. Gilson, K. Kim and Y. Inoue

*Proc. Natl. Acad. Sci. U. S. A.* 2007, **104**, 20737-20742; (d) F. Biedermann, V. D. Uzunova, O. A. Scherman, W. M. Nau and A. De Simone *J. Am. Chem. Soc.* 2012, **134**, 15318-15323; (e) L. Cao, M. Sekutor, P. Y. Zavalij, K. Mlinaric-Majerski, R. Glaser and L. Isaacs *Angew. Chem., Int. Ed.* 2014, **53**, 988-993.  
 7) (a) L. Isaacs *Acc. Chem. Res.* 2014, **47**, 2052-2062; (b) Y. H. Ko, E. Kim, I. Hwang and K. Kim *Chem. Commun.* 2007, 1305-1315; (c) A. Hennig, H. Bakirci and W. M. Nau *Nature Methods* 2007, **4**, 629-632; (d) R. Dsouza, A. Hennig and W. Nau *Chem. Eur. J.* 2012, **18**, 3444-3459; (e) D.-W. Lee, K. Park, M. Banerjee, S. Ha, T. Lee, K. Suh, S. Paul, H. Jung, J. Kim, N. Selvapalam, S. Ryu and K. Kim *Nat. Chem.* 2011, **3**, 154-159; (f) Y. Ahn, Y. Jang, N. Selvapalam, G. Yun and K. Kim *Angew. Chem., Int. Ed.* 2013, **52**, 3140-3144; (g) Y. Miyahara, K. Abe and T. Inazu *Angew. Chem., Int. Ed.* 2002, **41**, 3020-3023; (h) J. Del Barrio, P. Horton, D. Lairez, G. Lloyd, C. Toprakcioglu and O. Scherman *J. Am. Chem. Soc.* 2013, **135**, 11760-11763.  
 8) (a) G. Hettiarachchi, D. Nguyen, J. Wu, D. Lucas, D. Ma, L. Isaacs and V. Briken *PLoS One* 2010, **5**, e10514; (b) V. D. Uzunova, C. Cullinane, K. Brix, W. M. Nau and A. I. Day *Org. Biomol. Chem.* 2010, **8**, 2037-2042; (c) R. Oun, R. S. Floriano, L. Isaacs, E. G. Rowan and N. J. Wheate *Toxicol. Res.* 2014, **3**, 447-455.  
 9) (a) N. Dong, S.-F. Xue, Q.-J. Zhu, Z. Tao, Y. Zhao and L.-X. Yang *Supramol. Chem.* 2008, **20**, 659-665; (b) N. Dong, X. Wang, J. Pan and Z. Tao *Acta Chim. Sinica* 2011, **69**, 1431-1437; (c) N. Saleh, A. L. Koner and W. M. Nau *Angew. Chem. Int. Ed.* 2008, **47**, 5398-5401; (d) S. Walker, R. Oun, F. J. McInnes and N. J. Wheate *Isr. J. Chem.* 2011, **51**, 616-624; (e) Y. J. Jeon, S.-Y. Kim, Y. H. Ko, S. Sakamoto, K. Yamaguchi and K. Kim *Org. Biomol. Chem.* 2005, **3**, 2122-2125.  
 10) (a) E. Appel, J. del Barrio, X. Loh and O. Scherman *Chem. Soc. Rev.* 2012, **41**, 6195-6214; (b) J. Zhang, R. J. Coulston, S. T. Jones, J. Geng, O. A. Scherman and C. Abell *Science* 2012, **335**, 690-694.  
 11) (a) L. Cao, G. Hettiarachchi, V. Briken and L. Isaacs *Angew. Chem., Int. Ed.* 2013, **52**, 12033-12037; (b) E. Kim, D. Kim, H. Jung, J. Lee, S. Paul, N. Selvapalam, Y. Yang, N. Lim, C. G. Park and K. Kim *Angew. Chem., Int. Ed.* 2010, **49**, 4405-4408; (c) H. Jung, K. M. Park, J.-A. Yang, E. J. Oh, D.-W. Lee, K. Park, S. H. Ryu, S. K. Hahn and K. Kim *Biomaterials* 2011, **32**, 7687-7694.  
 12) (a) M. Stancl, J. Svec and V. Sindelar *Isr. J. Chem.* 2011, **51**, 592-599; (b) L. Isaacs *Isr. J. Chem.* 2011, **51**, 578-591; (c) A. Chakraborty, A. Wu, D. Witt, J. Lagona, J. C. Fettinger and L. Isaacs *J. Am. Chem. Soc.* 2002, **124**, 8297-8306; (d) W.-H. Huang, P. Y. Zavalij and L. Isaacs *J. Am. Chem. Soc.* 2008, **130**, 8446-8454; (e) D. Lucas, T. Minami, G. Iannuzzi, L. Cao, J. B. Wittenberg, P. Anzenbacher and L. Isaacs *J. Am. Chem. Soc.* 2011, **133**, 17966-17976; (f) M. Stancl, M. Necas, J. Taraba and V. Sindelar *J. Org. Chem.* 2008, **73**, 4671-4675; (g) M. Stancl, M. Hodan and V. Sindelar *Org. Lett.* 2009, **11**, 4184-4187; (h) D. Ma, Z. Gargulakova, P. Y. Zavalij, V. Sindelar and L. Isaacs *J. Org. Chem.* 2010, **75**, 2934-2941; (i) M. Stancl, Z. Gargulakova and V. Sindelar *J. Org. Chem.* 2012, **77**, 10945-10948; (j) M. Stancl, L. Gilberg, L. Ustrnul, M. Necas and V. Sindelar *Supramol. Chem.* 2014, **26**, 168-172.  
 13) (a) L. Isaacs, D. Witt and J. Lagona *Org. Lett.* 2001, **3**, 3221-3224; (b) L. Isaacs and D. Witt *Angew. Chem., Int. Ed.* 2002, **41**, 1905-1907; (c) A. Wu, A. Chakraborty, J. C. Fettinger, R. A. Flowers, II and L. Isaacs *Angew. Chem., Int. Ed.* 2002, **41**, 4028-4031.  
 14) (a) J. Lagona, J. C. Fettinger and L. Isaacs *Org. Lett.* 2003, **5**, 3745-3747; (b) J. Lagona, J. C. Fettinger and L. Isaacs *J. Org. Chem.* 2005, **70**, 10381-10392.  
 15) L. Isaacs, S.-K. Park, S. Liu, Y. H. Ko, N. Selvapalam, Y. Kim, H. Kim, P. Y. Zavalij, G.-H. Kim, H.-S. Lee and K. Kim *J. Am. Chem. Soc.* 2005, **127**, 18000-18001.  
 16) (a) W.-H. Huang, S. Liu, P. Y. Zavalij and L. Isaacs *J. Am. Chem. Soc.* 2006, **128**, 14744-14745; (b) W.-H. Huang, P. Y. Zavalij and L. Isaacs *Angew. Chem., Int. Ed.* 2007, **46**, 7425-7427; (c) W.-H. Huang, P. Y. Zavalij and L. Isaacs *Org. Lett.* 2008, **10**, 2577-2580.  
 17) (a) J. Svec, M. Necas and V. Sindelar *Angew. Chem., Int. Ed.* 2010, **49**, 2378-2381; (b) V. Havel, J. Svec, M. Wimmerova, M. Dusek, M. Pojarova and V. Sindelar *Org. Lett.* 2011, **13**, 4000-4003; (c) J. Svec, M. Dusek, K. Fejfarova, P. Stacko, P. Klan, A. E. Kaifer, W. Li, E. Hudeckova and V. Sindelar *Chem. - Eur. J.* 2011, **17**, 5605-5612; (d) V. Havel, V. Sindelar, M. Necas and A. E. Kaifer *Chem. Commun.* 2014, **50**, 1372-1374; (e) A. Revesz, D. Schroder, J. Svec, M. Wimmerova and V. Sindelar *J. Phys. Chem. A* 2011, **115**, 11378-11386.  
 18) (a) L. Gilberg, M. S. A. Khan, M. Enderesova and V. Sindelar *Org. Lett.* 2014, **16**, 2446-2449; (b) L. Cao and L. Isaacs *Org. Lett.* 2012, **14**, 3072-

- 3075; (c) B. Vinciguerra, L. Cao, J. R. Cannon, P. Y. Zavalij, C. Fenselau and L. Isaacs *J. Am. Chem. Soc.* 2012, **134**, 13133-13140.
- 19) (a) J. B. Wittenberg, P. Y. Zavalij and L. Isaacs *Angew. Chem., Int. Ed.* 2013, **52**, 3690-3694; (b) M. Zhang, L. Cao and L. Isaacs *Chem. Commun.* 2014, Ahead of Print.
- 20) (a) C. A. Burnett, D. Witt, J. C. Fettinger and L. Isaacs *J. Org. Chem.* 2003, **68**, 6184-6191; (b) W.-H. Huang, P. Y. Zavalij and L. Isaacs *Org. Lett.* 2009, **11**, 3918-3921; (c) D. Ma, P. Y. Zavalij and L. Isaacs *J. Org. Chem.* 2010, **75**, 4786-4795; (d) D. Ma, B. Zhang, U. Hoffmann, M. G. Sundrup, M. Eikermann and L. Isaacs *Angew. Chem., Int. Ed.* 2012, **51**, 11358-11362; (e) T. Minami, N. A. Esipenko, B. Zhang, L. Isaacs, R. Nishiyabu, Y. Kubo and P. Anzenbacher *J. Am. Chem. Soc.* 2012, **134**, 20021-20024; (f) C. Shen, D. Ma, B. Meany, L. Isaacs and Y. Wang *J. Am. Chem. Soc.* 2012, **134**, 7254-7257; (g) T. Minami, N. Esipenko, A. Akdeniz, B. Zhang, L. Isaacs and P. Anzenbacher *J. Am. Chem. Soc.* 2013, **135**, 15238-15243.
- 21) D. Ma, G. Hettiarachchi, D. Nguyen, B. Zhang, J. B. Wittenberg, P. Y. Zavalij, V. Briken and L. Isaacs *Nat. Chem.* 2012, **4**, 503-510.
- 22) B. Zhang, P. Y. Zavalij and L. Isaacs *Org. Biomol. Chem.* 2014, **12**, 2413-2422.
- 23) B. Zhang and L. Isaacs *J. Med. Chem.* 2015, **58**, 10.1021/jm501276u.
- 24) R. P. Sijbesma, A. P. M. Kentgens, E. T. G. Lutz, J. H. van der Maas and R. J. M. Nolte *J. Am. Chem. Soc.* 1993, **115**, 8999-9005.
- 25) J.-J. Zhou, X. Yu, Y.-C. Zhao, X. Xiao, Y.-Q. Zhang, Q.-J. Zhu, S.-F. Xue, Q.-J. Zhang, J.-X. Liu and Z. Tao *Tetrahedron* 2014, **70**, 800-804.
- 26) L. Isaacs, D. Witt and J. C. Fettinger *Chem. Commun.* 1999, 2549-2550.
- 27) D. Witt, J. Lagona, F. Damkaci, J. C. Fettinger and L. Isaacs *Org. Lett.* 2000, **2**, 755-758.
- 28) (a) Z.-G. Wang, B.-H. Zhou, Y.-F. Chen, G.-D. Yin, Y.-T. Li, A.-X. Wu and L. Isaacs *J. Org. Chem.* 2006, **71**, 4502-4508; (b) N.-F. She, X.-G. Meng, M. Gao, A.-X. Wu and L. Isaacs *Chem. Commun.* 2008, 3133-3135; (c) N.-F. She, M. Gao, X.-G. Meng, G.-F. Yang, J. A. A. W. Elemans, A.-X. Wu and L. Isaacs *J. Am. Chem. Soc.* 2009, **131**, 11695-11697; (d) A. Wu, P. Mukhopadhyay, A. Chakraborty, J. C. Fettinger and L. Isaacs *J. Am. Chem. Soc.* 2004, **126**, 10035-10043; (e) S. Ghosh, A. Wu, J. C. Fettinger, P. Y. Zavalij and L. Isaacs *J. Org. Chem.* 2008, **73**, 5915-5925.
- 29) K. A. Connors *Binding constants*; John Wiley & Sons: New York, 1987,
- 30) (a) A. E. Rowan, J. A. A. W. Elemans and R. J. M. Nolte *Acc. Chem. Res.* 1999, **32**, 995-1006; (b) J. N. H. Reek, J. A. A. W. Elemans, R. de Gelder, P. T. Beurskens, A. E. Rowan and R. J. M. Nolte *Tetrahedron* 2002, **59**, 175-185.
- 31) T. Higuchi and K. A. Connors *Adv. Anal. Chem. Inst.* 1965, **4**, 117-212.
- 32) (a) C. Fabre, N. Mimura, K. Bobb, S.-Y. Kong, G. Gorgun, D. Cirstea, J. Hu, J. Minami, H. Ohguchi, J. Zhang, J. Meshulam, R. D. Carrasco, Y.-T. Tai, P. G. Richardson, T. Hideshima and K. C. Anderson *Clin. Cancer Res.* 2012, **18**, 4669-4681; (b) J. Zhang, D. R. Sliskovic and C. E. Ducker (Profectus BioSciences, Inc., USA), 7-oxabicyclo[4.1.0]heptenyl heteroarylamine derivatives as inhibitors of nf-kb useful for treatment of cancer, inflammation, auto-immune diseases, diabetes, infections, cardiovascular diseases and ischemia-reperfusion injuries. WO 2010111460, 2010.
- 33) V. J. Stella, V. M. Rao, E. A. Zannou and V. Zia *Adv. Drug Delivery Rev.* 1999, **36**, 3-16.
- 34) W. M. Nau, M. Florea and K. I. Assaf *Isr. J. Chem.* 2011, **51**, 559-577.