

Nanoscale

Accepted Manuscript



This is an *Accepted Manuscript*, which has been through the Royal Society of Chemistry peer review process and has been accepted for publication.

Accepted Manuscripts are published online shortly after acceptance, before technical editing, formatting and proof reading. Using this free service, authors can make their results available to the community, in citable form, before we publish the edited article. We will replace this *Accepted Manuscript* with the edited and formatted *Advance Article* as soon as it is available.

You can find more information about *Accepted Manuscripts* in the [Information for Authors](#).

Please note that technical editing may introduce minor changes to the text and/or graphics, which may alter content. The journal's standard [Terms & Conditions](#) and the [Ethical guidelines](#) still apply. In no event shall the Royal Society of Chemistry be held responsible for any errors or omissions in this *Accepted Manuscript* or any consequences arising from the use of any information it contains.

Interface formation of two- and three-dimensionally bonded materials in the case of GeTe-Sb₂Te₃ superlattices

Jamo Momand^{1,}, Ruining Wang², Jos E. Boschker², Marcel A. Verheijen³, Raffaella Calarco², Bart J. Kooi^{1,*}*

¹Zernike Institute for Advanced Materials, University of Groningen, Nijenborgh 4, 9747 AG Groningen, The Netherlands

²Paul-Drude-Institut für Festkörperelektronik, Hausvogteiplatz 5-7, 10117 Berlin, Germany

³Eindhoven University of Technology, Department of Applied Physics, NL-5600 MB Eindhoven, The Netherlands

*E-mail: j.momand@rug.nl, b.j.kooi@rug.nl

Abstract

GeTe-Sb₂Te₃ superlattices are nanostructured phase-change materials which are under intense investigation for non-volatile memory applications. They show superior properties compared to their bulk counterparts and significant efforts exist to explain the atomistic nature of their functionality. The present work sheds new light on the interface formation between GeTe and Sb₂Te₃, contradicting previously proposed models in the literature. For this purpose [GeTe(1nm)-Sb₂Te₃(3nm)]₁₅ superlattices were grown on passivated Si(111) at 230 °C using molecular beam epitaxy and they have been characterized particularly with cross-sectional HAADF scanning transmission electron microscopy. Contrary to the previously proposed models, it is found that the ground state of the film actually consists of van der Waals bonded layers (i.e. a van der Waals heterostructure) of Sb₂Te₃ and rhombohedral GeSbTe. Moreover, it is shown by annealing the film at 400 °C, which reconfigures the superlattice into bulk rhombohedral GeSbTe, that this van der Waals layer is thermodynamically favored. These results are explained in terms of the bonding dimensionality of GeTe and Sb₂Te₃ and the strong tendency of these materials to intermix. The findings debate the previously proposed switching mechanisms of superlattice phase-change materials and give new insights in their possible memory application.

Keywords

GeTe-Sb₂Te₃ superlattice, phase-change memory, 2D materials, van der Waals epitaxy, van der Waals heterostructures

Introduction

Phase-Change Materials (PCMs) based on Ge, Sb and Te (GeSbTe) are some of the most promising candidates for next-generation data-storage applications^{1,2}. Due to their unique combination of functional properties, they are currently under intense investigation for non-volatile random-access memory. Recently, a new concept of nanostructured PCMs has been developed based on GeTe-Sb₂Te₃ superlattices, referred to as Interfacial Phase-Change Material or Chalcogenide Superlattice (CSL)^{3,4}. This type of material shows strongly improved switching properties compared to its bulk counterparts, as well as new possibilities for multi-level switching⁵ and magnetic functionality⁶⁻⁸. Initially it was proposed that the switching was due to the amorphous-crystalline phase-transition of the separate relatively thick superlattice sublayers, where the improved performance was attributed to the reduced thermal conductivity of the superlattice structure^{4,5}. However, it was demonstrated that the CSL kept functioning while the GeTe sublayer thickness was narrowed down to ≤ 1 nm, equivalent to two or three bilayers (BLs) GeTe, and that CSL had higher thermal conductivity compared with bulk GeSbTe. It was concluded that the phase-change occurred within the crystalline state, as was verified with transmission electron microscopy (TEM), not requiring the melt-quench cycle and thereby inherently acquiring improved properties and stability³.

Despite these advances, the crystal structure and switching mechanism of CSL is currently not clearly understood. As both GeTe and Sb₂Te₃ are based on abc-stacking of close-packed atomic planes, with repeating units (Ge-Te)_m and (Te-Sb-Te-Sb-Te)_n, CSL is being modeled for simplicity as (GeTe)₂(Sb₂Te₃)₁ with stacking sequences as shown in Fig. 1a. The structure by Kooi et al. corresponds experimentally best to the stable phase of Ge₂Sb₂Te₅⁹ (rhombohedral Ge₂Sb₂Te₅), the prototype conventional PCM, which is consistent with ab-initio calculations at

zero temperature. However, at elevated temperatures of 180 °C and above these calculations suggest that the Kooi et al. phase becomes progressively unfavorable and therefore the other sequences dominate^{8,10,11}. Based on these results, two competing switching models were derived, which originate from the understanding of the Ge umbrella-flip mechanism in PCMs^{12,13}. Tominaga et al. propose that the two phases of CSL correspond to the Ferro low-resistance state and inv. Petrov high-resistance state with a single GeTe umbrella flip as shown in Fig. 1b^{8,10}, while Ohyanagi et al. propose the Petrov low-resistance state and inv. Petrov high-resistance state with a double GeTe umbrella flip as shown in Fig. 1c¹⁴.

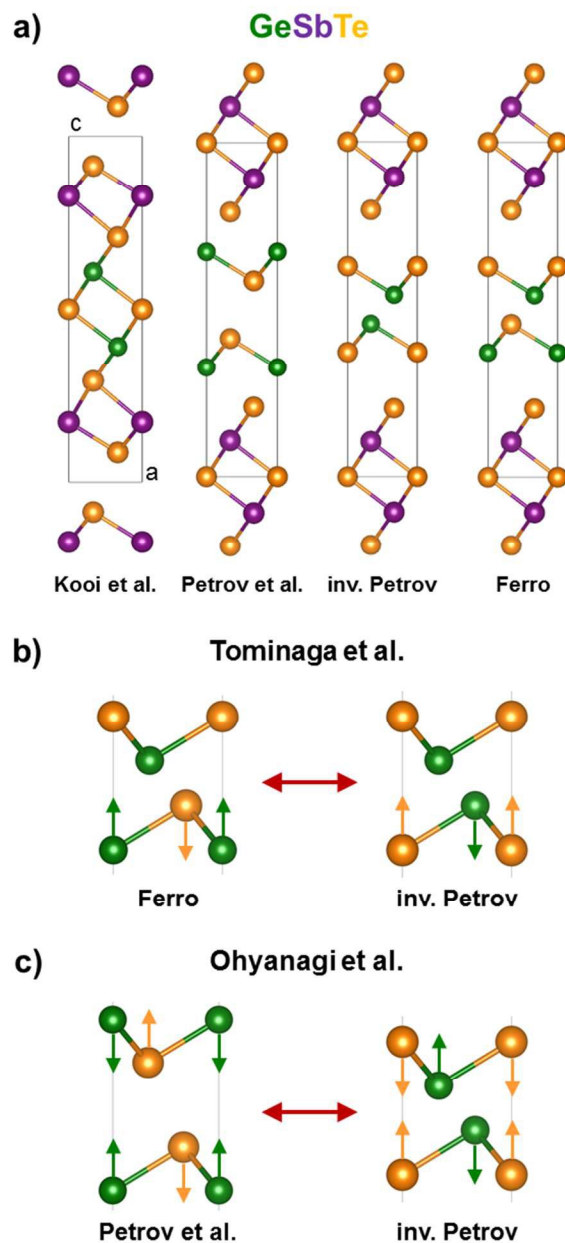


Fig. 1: Models of GeTe-Sb₂Te₃ superlattices considered in the literature. a) Simple CSL stacking sequences in case of (GeTe)₂(Sb₂Te₃)₁; b) CSL switching model proposed by Tominaga et al. considering a single Ge umbrella flip^{8,10}; c) CSL switching model proposed by Ohyanagi et al. considering a double Ge umbrella flip¹⁴; Note that in both cases of Fig. 1b and Fig. 1c the switching cannot be the result of only a vertical flip of Ge atoms (because this would disagree with the abc-type stacking)¹¹.

There are several problems with these models that need to be addressed to progress the understanding of CSL operation. Bulk GeTe and Sb₂Te₃ are three-dimensionally (3D) and two-dimensionally (2D) bonded solids, respectively, where the Te-Te bond of the latter is of van der Waals (vdW) type^{15,16}. This implies that vdW-surfaces of “entire” quintuple layers (QLs) Sb₂Te₃, written schematically as (Te-Sb-Te-Sb-Te-vdW-), are passive and do not prefer to bind with dangling bonds of GeTe. In this respect the experimental structure by Kooi et al. best satisfies this condition, as the GeTe BLs are intercalated within the Sb₂Te₃ block where the bonding is 3D, while the other models do not properly match the GeTe and Sb₂Te₃ bonding types. Moreover, since it is known from experiments that stable Ge₂Sb₂Te₅ contains mixed Ge/Sb atomic layers¹⁷, lowering the free energy of the PCM at higher temperatures due to configurational entropy, it is debatable whether modelling CSL with pure Ge or Sb atomic planes as in Fig.1 is justified. Hence, it is not clear why the structures in Fig. 1, other than the experimentally accepted one based on Ref. 9 and 17 would be thermodynamically stable, and why, therefore, the proposed switching mechanisms would be correct.

These problems are addressed in the present work, where the previously found switching models of CSL are challenged and an alternative ground state structure is presented. By using highly controlled Molecular Beam Epitaxy (MBE), which has shown in our previous work to produce high-quality Sb₂Te₃¹⁵ and GeTe¹⁶ thin films and GeSbTe memory devices¹⁸, [GeTe(1nm)-Sb₂Te₃(3nm)]₁₅ superlattices have been grown on the Sb-passivated surfaces of Si(111), ($\sqrt{3}\times\sqrt{3}$)R30°-Sb, at a substrate temperature of 230 °C as described in Experimental. The crystal structure of the films is resolved using various characterization techniques, including X-Ray Diffraction (XRD), Energy Dispersive X-ray spectroscopy (EDX) and High-Angle Annular Dark Field Scanning Transmission Electron Microscopy (HAADF-STEM). Contrary to the previously

proposed models, it is demonstrated that the structure of the films corresponds to van der Waals bonded layers (i.e. a van der Waals heterostructure¹⁹) of Sb_2Te_3 and rhombohedral GeSbTe , in agreement with expectation based on models proposed by Kooi et al.⁹ and Matsunaga et al.¹⁷. Moreover, preliminary memory characterization shows that similar MBE grown films indeed display clear CSL memory behavior with for instance a reduction of the programming current by a factor three in comparison to the same devices containing bulk GeSbTe . The present results therefore indicate that the models for CLS switching as depicted in Fig. 1b and 1c are unlikely and that a revision of the switching mechanism is required.

Results

The average XRD, XRR and EDX results in the Supplementary Information (SI) demonstrate that $[\text{GeTe}(1\text{nm})\text{-Sb}_2\text{Te}_3(3\text{nm})]_{15}$ has been grown with a clear, well-defined and stoichiometrically consistent superlattice feature. The structure of this CSL is then studied with HAADF-STEM, of which an overview is shown in Fig. 2a. The Si substrate at the bottom of the image appears darker than the film due to Z-contrast and the dark horizontal lines in the film correspond to the vdW type Te-Te bonds, referred to as vdW gaps. Since Sb_2Te_3 and GeTe have 2D and 3D bonding, respectively^{15,16}, the formation of vdW gaps is expected to be at least between adjacent QLs of Sb_2Te_3 . The superlattice feature of the film can then be recognized in this image by (i) Z-contrast of Ge with respect to Sb and Te (having approximately equal Z) and (ii) the 2D bonded Sb_2Te_3 QLs, which are separated by vdW gaps. Hence, the periodicity of the alternating $\text{GeTe-Sb}_2\text{Te}_3$ block is indicated on the left in the figure, pointing each time roughly to the Sb_2Te_3 sublayers.

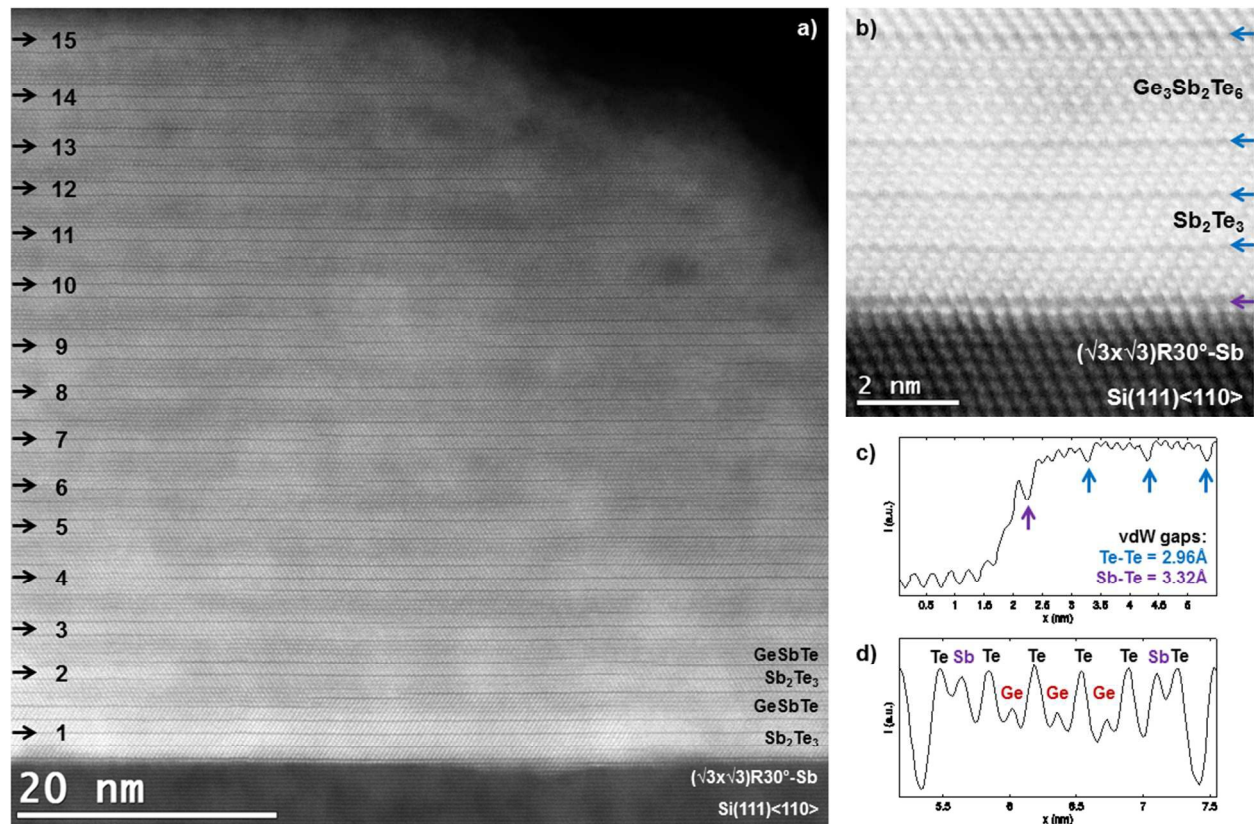


Fig. 2: HAADF-STEM measurements on the as-deposited superlattice. a) Overview micrograph of the $[GeTe(1nm)-Sb_2Te_3(3nm)]_{15}$ CSL grown by MBE; b) Close-up of the Si(111)-Sb-Sb₂Te₃ interface and GeSbTe layer formation, which is deduced to be Ge₃Sb₂Te₆ from Fig. 2d; c) Intensity linescan corresponding to the Si(111)-Sb-Sb₂Te₃ interface in Fig. 2b; d) Intensity linescan corresponding to the GeSbTe layer in Fig. 2b.

Two observations can be made from the overview image in Fig. 2a. First, it is deduced by the number of vdW gaps that typically 1 or 2 instead of the expected 3 QLS Sb₂Te₃ are formed, where the vdW-layer thicknesses are 1 QL or larger. The reason is that the vdW-layers consist of entire QLS Sb₂Te₃, while for GeTe rather the formation of (GeTe)_n+Sb₂Te₃ or rhombohedral GeSbTe occurs. This is why almost exclusively vdW layers of odd number atomic planes are formed. Second, various stacking and layering faults are seen in the image, particularly double-

plane defects in between the odd-numbered atomic plane vdW layers, which is a consequence of the fact that the film is not perfectly deposited plane by plane. However, the clear occurrence of vdW gaps and their special extension affirms the smoothness of growth achieved with MBE, reflecting its high-quality layer by layer growth. Also, twinning and twin-boundaries are observed as the crystal is viewed along $\text{Si}\langle 1\bar{1}0\rangle$ or $\text{Sb}_2\text{Te}_3\langle 11\bar{2}0\rangle$, where the abc-stacking becomes apparent. From φ -scans around the $\text{Sb}_2\text{Te}_3(220)$, shown in SI Fig. S4, it is found that an approximately equal number of opposite twin-domains exist in the crystal. This is also seen in previous work on the growth of Sb_2Te_3 and can be attributed to the weak bonding in between the vdW-layers¹⁵.

The high-resolution image of the substrate-film interface is shown in Fig. 2b. From this image it becomes apparent that the substrate and film are crystallographically aligned along the hexagonal basis vectors in these planes. In the corresponding linescan in Fig. 2c the vdW gap and structure formation can be studied in more detail. Since the deposition of the film is initiated by passivating the $\text{Si}(111)-(7\times 7)$ surface with $(\sqrt{3}\times\sqrt{3})R30^\circ\text{-Sb}$, the first bright atomic layer on the substrate is Sb, where each of the trivalent Sb atoms bonds to 3 Si dangling bonds and thereby remove the (7×7) surface reconstruction¹⁵. The subsequent surface is then of vdW type and vdW epitaxy²⁰ of Sb_2Te_3 on Si can be achieved, as evidenced by the subsequent deposition of 3 Sb_2Te_3 QLs. Interestingly, it is measured from Fig. 2c that the Sb-Te distance at the interface is larger than the Te-Te distances in the film, 0.332 nm and 0.296 nm, respectively. This can be explained by the fact that in Sb_2Te_3 the atomic planes are close-packed on top of each other and thus the Te-Te atomic planes have a distance of close-packed vdW-bond radii of Te atoms. For the substrate-film interface however, there is the $\sim 11\%$ lattice mismatch, which impedes the close-packing of Sb-Te. The distance of 0.332 nm is nevertheless smaller than the $0.296/\sqrt{2/3} =$

0.363 nm close-packing factor, indicative of some degree of bonding. Note also that in this respect, where the atomic planes have a close-packed configuration and also do not have interplanar dangling bonds, the vdW gap is a different object than an actual vacancy layer, as sometimes is used without distinction in the literature.

On top of the 3 QLs Sb_2Te_3 in Fig. 2b an 11-layered vdW structure has been formed of which the corresponding intensity linescan is shown in Fig. 2d. By viewing the HAADF-intensities of the atomic columns in the layer and taking into account that the Te atomic plane is alternated with Sb/Ge atomic planes, it is deduced that the stacking is of the form (Te-Sb-Te-Ge-Te-Ge-Te-Ge-Te-Sb-Te-vdW-). This linescan also demonstrates the atomic precision of the MBE growth by showing that almost pure Ge and Sb atomic planes have been formed during deposition with little intermixing of the Ge/Sb planes, as expected for the alloy¹⁷. Hence, the deposition of 1 nm (or 3 BLs) of GeTe has resulted in the formation of a natural or rhombohedral $\text{Ge}_3\text{Sb}_2\text{Te}_6$ layer and is labeled accordingly. There is an inherent asymmetry between the beginning and the end of the GeSbTe layer in the superlattice, which can be attributed to the growth direction and thus has a kinetic origin. The formation of the (-vdW-Te-Sb-Te-) stacking sequence is surprising in this respect, as Sb_2Te_3 growth actually occurs in entire 1 nm QLs^{15,21}. This shows that during this layered Sb_2Te_3 growth, after the flux transition from Sb to Ge, the film already has a strong tendency to reconfigure itself to form this type of surface and stacking sequence, rather than forming the proposed (inv.) Petrov or Ferro interfaces in Fig. 1a.

The naturally occurring stacking faults and layering disorder in the deposited superlattice seem inconsistent with the high quality that should be achievable with MBE, but this is another signature that the artificially grown CSL reconfigures into a lower energy state. Moreover, the stacking disorder is quite useful for characterization of different types of structures formed. In

this way many different vdW layers can be observed, eliminating the necessity for many depositions and sample analyses. Fig. 3 shows parts of the film where layers of different number of atomic planes are formed, namely 5-, 7-, 9-, 11- and 13-layered vdW systems. Starting from the 5-layered system in Fig. 3a and counting forward, it can be seen that the intensity lowering is particularly happening in the center of the vdW layer, confirming the results described above that pure Ge does not bind near the vdW gaps. The 5-layered system is just a QL Sb_2Te_3 with equal intensity maxima, while the 7-layered system has a single Ge mixed plane with considerable amount of Sb at the center of the layer. The expected stacking sequences occur for 9-, 11- and 13 layers, where almost pure Ge atomic planes are formed, and they already show evidence for Ge intermixing in the Sb layer near the vdW gap. These findings thus confirm that the vdW gap is formed after the -Te-Sb-Te termination of the stack, such as in Sb_2Te_3 , and that the GeTe is thus intercalated within the Sb_2Te_3 block, where its 3D bonding is matched. Note that this is in contrast to phases richer in Sb than Sb_2Te_3 where Sb bilayers are intercalated within the vdW gaps of Sb_2Te_3 ^{15,22}. Hence, the present results lead to the conclusion that the structure of the as-deposited GeTe- Sb_2Te_3 superlattice is a vdW heterostructure of Sb_2Te_3 and rhombohedral GeSbTe.

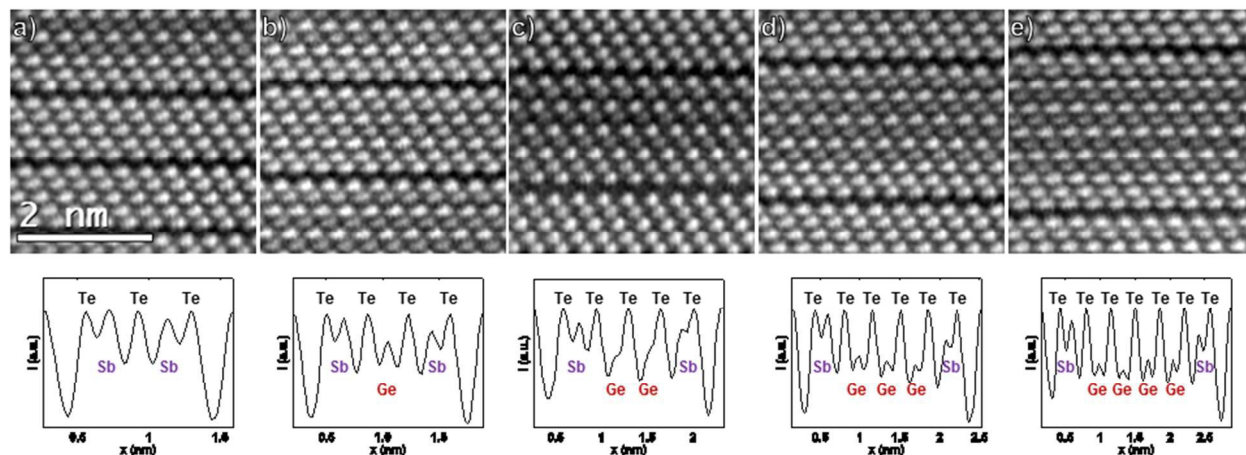


Fig. 3: Variety of vdW layers formed in the as-deposited superlattice. The intensity linescans corresponding to the HAADF-STEM micrographs cover larger regions than shown in the representative images. a) 5-layer; b) 7-layer; c) 9-layer; d) 11-layer; e) 13-layer; In the linescans the low intensity dips correspond to vdW gaps and the peaks to the Ge, Sb and Te atomic columns. Note that several atomic columns already show evidence of Ge/Sb intermixing.

To monitor the direction of chemical diffusion in the superlattice, another piece of the as-deposited sample has been annealed at 400 °C for 30 min and has undergone the same characterization procedures. A drastic transformation can be observed by comparing XRD acquired on the sample before and after annealing. As shown Fig. 4, after annealing, all the peaks attributed to Sb_2Te_3 at $Q_z = 2.4, 3.09, \text{ and } 4.26 \text{ \AA}^{-1}$ disappear and the CSL satellite peak at $Q_z = 3.46 \text{ \AA}^{-1}$, characteristic for the superlattice structure, vanishes as well. The new spectrum displays peaks spaced by $\sim 0.46 \text{ \AA}^{-1}$ which corresponds in real space to the c lattice parameter of rhombohedral GeSb_2Te_4 when described with hexagonal axes. These results show that overall Sb_2Te_3 and GeTe intermix into an ordered GeSb_2Te_4 structure after annealing and the CSL structure is lost.

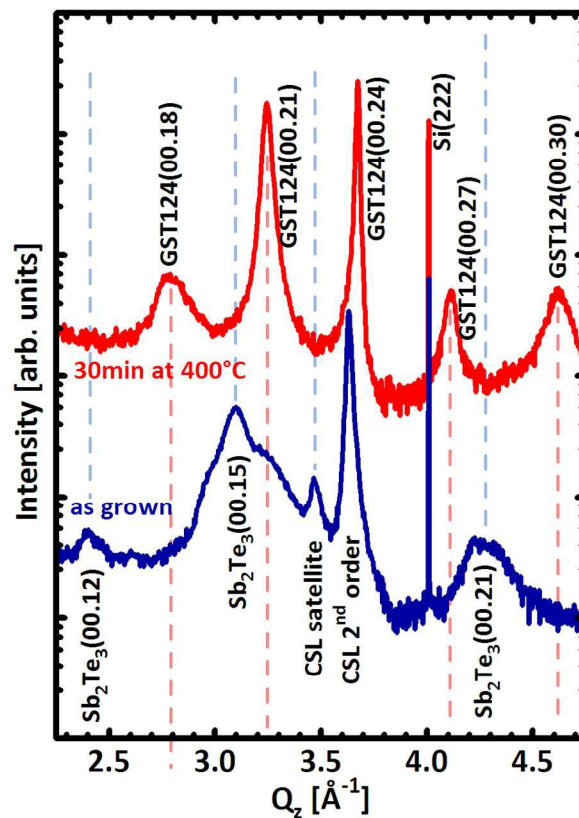


Fig. 4: Symmetric 2θ - ω scan on $[\text{GeTe}(1\text{nm})\text{-Sb}_2\text{Te}_3(3\text{nm})]_{15}$ CSL before (blue line) and after (red line) annealing at 400°C for 30min.

The cross-sectional HAADF-micrograph in Fig. 5a shows an overview of the thermally reconfigured film's microstructure, which has retained its layered vdW structure and 2D nature, as is expected for natural $\text{GeSbTe}^{9,17}$. Interestingly, it is observed that despite the large reconfiguration in the film, the Sb-monolayer terminating the Si substrate has remained intact, reflecting its stability and strong bonding. The Sb_2Te_3 QLs which were present in the superlattice stack have been dissolved, effectively destroying the superlattice structure, and the remaining film contains primarily 7- and 9-layered vdW systems with thickness of 1.36 ± 0.02 nm and 1.73 ± 0.02 nm, respectively.

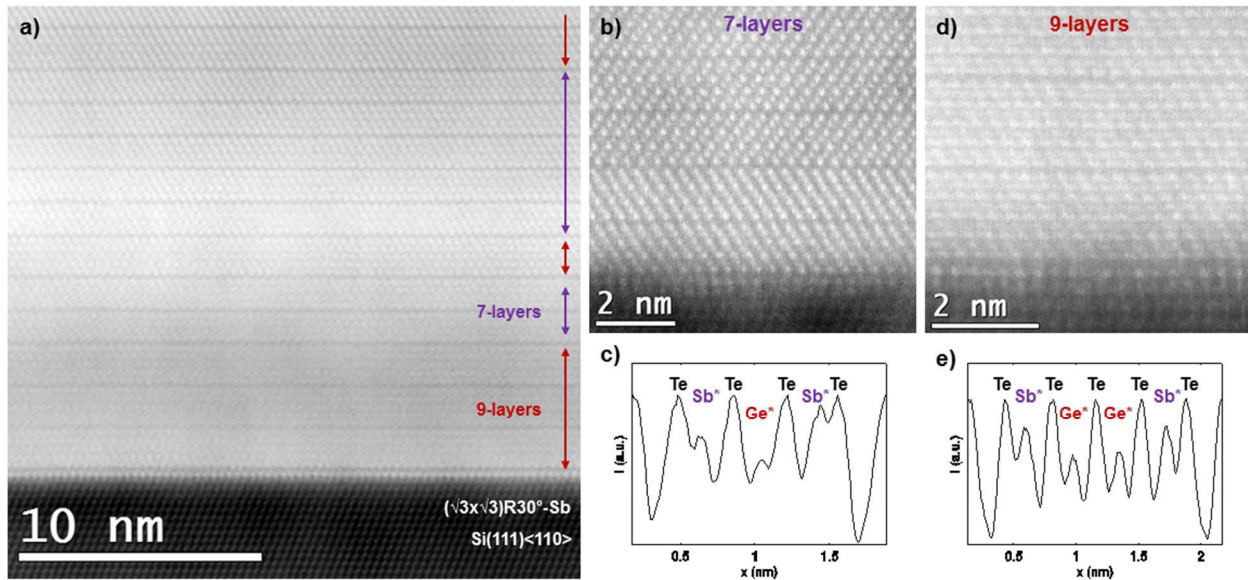


Fig. 5: HAADF-STEM measurements on the annealed superlattice. a) Overview micrograph showing that the CSL has thermally reconfigured into rhombohedral GeSbTe, consisting 7- and 9-layered vdW blocks; b) Close-up of a region consisting of 7-layered vdW blocks; c) Intensity linescan of a 7-layer shown in Fig. 5b; d) Close-up of a region consisting of 9-layered vdW blocks; e) Intensity linescan of a 9-layer shown in Fig. 5d; The asterisk in Fig. 5c and 5e indicates that the Ge and Sb atomic planes are intermixed.

Figs. 5b-c and 5d-e show the formation of 7- and 9-layered structures near the substrate with corresponding linescans, respectively. It is observed that the lowest intensity peaks of these structures, indicated by Ge* and Sb*, are again in the center of the vdW layers. Comparing this structure and the thickness of the vdW layers with literature^{9,17}, it shows that the superlattice created during growth by the alternating supply of Ge and Sb is reconfigured into bulk rhombohedral GeSbTe through the diffusion of Ge atoms. This result thus shows that the thermodynamically favored state of the system is rhombohedral GeSbTe, rather than the structures in Fig. 1a and suggests even stronger Ge intermixing in the superlattice for higher

deposition or annealing temperatures. These findings are thus consistent with the previous results on the as-deposited superlattice, which already showed such driving force. However, due to limited time and temperature during deposition complete transformation to rhombohedral GeSbTe is not possible, but screening of GeTe by -Te-Sb-Te was already achieved. Interestingly, as it is known from TEM-EDX measurements that the average composition, which has not changed after the reconfiguration, corresponds best to GeSb₂Te₄, the structure does not simply reconfigure to exclusively a 7-layered Kooi et al. structure with pure atomic planes (Te-Sb-Te-Ge-Te-Sb-Te-vdW-). In contrast, the formation of 9 layers supports the conclusion of intermixed Ge and Sb layers, as is observed in the HAADF intensities in Fig. 5c and Fig. 5e. The present results are thus fully consistent with the structure proposed for the first time in Ref.17 for stable Ge₂Sb₂Te₅ containing mixed Ge/Sb atomic layers¹⁷. They also demonstrate that the models in Fig. 1a which only consider pure Ge and Sb planes cannot be used at elevated temperatures, because they neglect the importance of configurational entropy.

Discussion

The Results section shows that the ground state of the GeTe-Sb₂Te₃ superlattices is actually a vdW heterostructure of Sb₂Te₃ and rhombohedral GeSbTe, consistent with the provided reasons in the Introduction. The -Te-Sb-Te vdW layer termination plays an important role in the pinning of vdW gaps, as is also expected and found in related compounds such as GeBiTe²³. This is in striking contradiction with the models proposed in the literature^{8,10,14}, for which the necessary (inv.) Petrov and Ferro structures do not seem to occur in experiments.

In addition, these models can hardly be compatible with actual experimental conditions to grow superlattices such as substrate temperature control and surface roughness. It is known from

previous work on bulk GeSbTe that GeTe molecules evaporate from the films between 200 °C and 250 °C during growth²⁴, narrowing the window of deposition. This is not taken into account in previous experiments¹⁴ and could play an important role in CSL growth by determining the average GeSbTe layer thickness. Concerning the ‘roughness’, all CSL memories reported in the literature have been grown with 1 nm GeTe thickness^{3,7,8,14}. These sublayers are always modelled with 2 GeTe BLs, but this is in fact incorrect, because 1 nm corresponds closely to 3 BLs and it is not clear how the structures and mechanisms generalize with such an increased sublayer thickness. When actual memories would rely very sensitively on having either 2 or 3 GeTe BLs, the whole technology becomes hardly realizable in practice.

Furthermore, the experimental evidence provided for the different states of Fig. 1b and 1c, based, as in this work, on HAADF-STEM images^{7,8}, does not include (and even shows inconsistencies with) the *Z*-contrast in these images. Moreover, these images focused on particularly small regions, making it difficult to analyze and compare the overall film structure. The TEM results in the original work by Simpson et al. on CSL memory switching³ indeed show a crystalline feature of the memory in the state which is indicated high-resistance. However, since it is known that GeSbTe can have the amorphous-crystalline transition in films down to 2 nm²⁵ and the images were captured using coherent TEM, which suffers from electron delocalization, it is not clear whether this film is partly or entirely crystalline.

The present findings thus disagree with the proposed switching mechanisms of CSL and debate whether it is proven that CSL switching is a fully crystalline-crystalline transition. On the other hand, the currently proposed ground state structure suggests that CSL switching may possibly be a limiting case of the amorphous-crystalline transition of very thin GeSbTe sublayers sandwiched between Sb₂Te₃ QLs. However, the thermal conductivity of CSL was measured to

be lower than for bulk GeSbTe in the work by Simpson et al.³, dismissing the explanation by Chong et al.^{4,5}. Hence, another mechanism for the reduced programming current should be responsible for the transition. A possible solution to resolve this issue can still be related to the pronounced interfacial and strain energy effects present in the CSLs. For instance, it has been established that that amorphous-crystalline interfaces may be of lower energy than crystalline-crystalline interfaces under certain energetic considerations²⁶, which thus would reduce the switching energy for thin GeSbTe sublayers sandwiched between crystalline spacer layers than for bulk GeSbTe. Furthermore, the effect of strain can also play a significant role as can be deduced from the a-lattice parameters of the relevant compounds, $a_{\text{GeTe}} = 0.417 \text{ nm}^{16,27,28}$, $a_{\text{Sb}_2\text{Te}_3} = 0.426^{9,15}$ and $a_{\text{Ge}_2\text{Sb}_2\text{Te}_5} = 0.422 \text{ nm}^{17,29}$, which indicate that the thicker the rhombohedral GeSbTe vdW sublayer becomes, the more it changes its constant from $a_{\text{Sb}_2\text{Te}_3}$ to a_{GeTe} . Thus, the GeSbTe vdW layer can mismatch to a maximum of $\sim 2\%$ with the Sb_2Te_3 matrix, depending on its thickness, adding the strain energy to the overall crystalline layer. Therefore, straining the rhombohedral GeSbTe layer could lower its amorphization energy and the enhanced growth speed can be explained by template growth within the crystalline Sb_2Te_3 matrix³⁰, consistent with the crystalline feature of TEM observations³. If this would be correct, a scheme would emerge to design optimal CSL stacks by introducing thin spacer layers that tailor interfacial energy and introduce sufficiently strained GeSbTe layers to lower the amorphization energy (e.g. by adjusting the GeSbTe layer thickness with proper $\text{Sb}_2\text{Te}_3/\text{GeSbTe}$ ratio), but not too strained as to facilitate sufficiently fast regrowth. Recently, it was also found that $\text{Ge}_x\text{Te}_{1-x}$ with $x \ll 0.5$ in the superlattice, which thus has Ge vacancies and therefore contains more strain of the crystal, reduced the switching energy compared with its stoichiometric $\text{Ge}_x\text{Te}_{1-x}$ with $x = 0.5$ counterpart³¹, consistent with the proposed hypothesis.

Conclusions

The present work shows that the ground state of GeTe-Sb₂Te₃ superlattices is actually a vdW heterostructure of Sb₂Te₃ and rhombohedral GeSbTe, which is in striking contradiction with the previously proposed models in the literature. These GeSbTe layers are formed due to the bonding dimensionality of the superlattice sublayers, as GeTe prefers to be 3D bonded within the Sb₂Te₃ block and not adjacent to a vdW gap. Such considerations are not taken into account when modeling superlattice PCM, which explains why the model structures are not observed experimentally. Additionally, the ab-initio modeled structures do not address the experimentally established atomic intermixing in Ge/Sb layers, omitting the configurational entropy effects on the free energy. More generally, the present results shed light on the bonding types in PCMs lying on the GeTe-Sb₂Te₃ tie-line, illustrating e.g. why metastable rock-salt GeSbTe structure reconfigures into the stable rhombohedral GeSbTe structure with Te-Te vdW bonds. This is thermodynamically favorable, which is thus also the driving force behind this crystalline order-disorder transition that changes the overall bonding from 3D to 2D. Also, the degree of vdW bonding in rhombohedral GeSbTe probably depends on the degree of Ge/Sb intermixing adjacent to the Te atomic layer at the vdW gap. An increasing mixing of this layer with Ge will then change the Te-Te bond from a passive vdW gap to an actual vacancy layer with dangling bonds, changing the coupling between adjacent GeSbTe layers and thereby probably affecting thermal and electrical conductivities. Overall the present results thus have important implications for understanding the structures and properties of GeTe-Sb₂Te₃ based CSLs, which are shown to be technologically relevant vdW heterostructures.

Experimental

MBE growth and annealing: The cleaning of the Si substrate, its introduction into the MBE system, and the preparation of the Si(111)-($\sqrt{3}\times\sqrt{3}$)R30°-Sb surface are detailed in a previous publication¹⁶. The substrate and cells are brought to the deposition temperature of 227.5 °C for the substrate, T(Ge)_{base}=1120 °C and T(Ge)_{tip}=1140 °C for the Ge cell, T(Sb)_{base}=450 °C and T(Sb)_{tip}=600 °C for the Sb cell, T(Te)_{base}=340 °C and T(Te)_{tip}=476 °C for the Te cell. According to previous flux calibration by XRR measurements on amorphous Ge, Sb, and Te films grown at room temperature, these cell temperatures correspond to a Ge flux of 0.16 nm/min, a Sb flux of 0.15 nm/min, and a Te flux of 0.45 nm/min, for a Ge/Sb/Te flux ratio of ~2/2/5. During growth, the shutter of the Te cell remained open, while the shutters of the Ge and Sb cells are alternatively opened and closed depending on the desired sublayer. The deposition time for each GeTe sublayer of 1 nm is 200 s, and 400 s for Sb₂Te₃ sublayers of 3 nm. After the deposition of the 15 repetitions, the sample is cooled down to room temperature, and prior to removal from the MBE chamber, the surface is capped with ~10 nm of Si₃N₄ by sputtering in the load-lock to prevent oxidation of the last GeTe sublayer. For the annealing experiment, a rapid thermal annealing (RTA) furnace was used. The annealing was performed on different pieces of the same sample, in less than 1 bar of nitrogen atmosphere. The temperature of 400 °C was reached from RT with a ramp of 10 °C/s.

TEM characterization: Cross-sectional TEM specimen were prepared along the Si(111)- $\langle 1\bar{1}0 \rangle$ substrate crystallographic directions by mechanical polishing, dimple grinding and low-voltage Ar⁺ ion-milling for final thinning using a Gatan PIPS II. Average EDX measurements were performed on 4 different cross-sectional specimen of the [GeTe-Sb₂Te₃]₁₅ superlattice using a

JEOL 2010 equipped with a LN₂-cooled SiLi detector. The spectra were fitted (< 1.4% error) with the Cliff-Lorimer (MBTS) correction method w/o absorbance as implemented in the NSS 2.3 software package from Thermo Scientific. HAADF-STEM measurements were carried out using a JEOL ARM200F with sub-Å point resolution settings, where the accelerating voltage was 200 kV, the semi-convergence angle was 22 mrad and ADF collecting angles were 68-280 mrad. Calibration of images is typically performed on the basis of the Si(111) interplanar distance (0.3135 nm). Image analysis was in all cases carried out on raw data using GMS 2.30 software and all linescans in this paper were normalized to the background by dividing them with a highest order unique polynomial through the Te peaks in the vdW layer + 2 neighboring Te peaks outside this layer. For better visibility, micrographs in Fig. 3 and Fig. 5a were filtered with the Average Background Subtraction Filter (ABSF) filter³², freely available at www.dmscripting.com/hrtem_filter.html.

XRD and XRR characterization: XRD and XRR characterizations were performed using a PANalytical X'Pert™ triple-axis diffractometer with Cu(K α -1) radiation ($\lambda=1.540598\text{\AA}$) and Ge(220) hybrid monochromator. The XRR fits were carried out with the specular interface model of the X'Pert reflectivity fitting software.

Visuals: The visuals in Fig. 1 were created using the freely available VESTA software package³³.

Acknowledgements

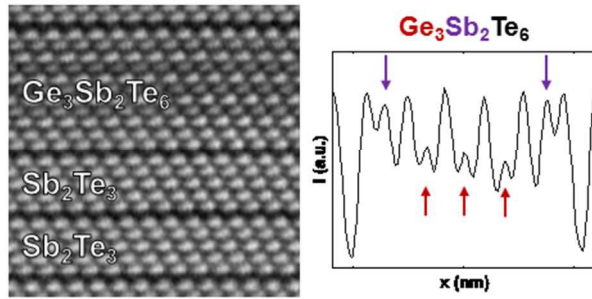
This work was supported by EU within the FP7 project PASTRY (GA 317746).

References

- 1 G. W. Burr, M. J. Breitwisch, M. Franceschini, D. Garetto, K. Gopalakrishnan, B. Jackson, B. Kurdi, C. Lam, L. A. Lastras, A. Padilla, B. Rajendran, S. Raoux, R. S. Shenoy, *J. Vac. Sci. Technol. B*, 2010, **28**, 223–262.
- 2 D. Lencer, M. Salinga and M. Wuttig, *Adv. Mater.*, 2011, **23**, 2030–2058.
- 3 R. E. Simpson, P. Fons, A. V. Kolobov, T. Fukaya, M. Krbal, T. Yagi and J. Tominaga, *Nat. Nanotechnol.*, 2011, **6**, 501–505.
- 4 T. C. Chong, L. P. Shi, R. Zhao, P. K. Tan, J. M. Li, H. K. Lee, X. S. Miao, A. Y. Du and C. H. Tung, *Appl. Phys. Lett.*, 2006, **88**, 122114.
- 5 T. C. Chong, L. P. Shi, X. Q. Wei, R. Zhao, H. K. Lee, P. Yang and A. Y. Du, *Phys. Rev. Lett.*, 2008, **100**, 136101.
- 6 J. Tominaga, R. E. Simpson, P. Fons and A. V. Kolobov, *Appl. Phys. Lett.*, 2011, **99**, 152105.
- 7 D. Bang, H. Awano, J. Tominaga, A. V. Kolobov, P. Fons, Y. Saito, K. Makino, T. Nakano, M. Hase, Y. Takagaki, A. Giussani, R. Calarco and S. Murakami, *Sci. Rep.*, 2014, **4**.
- 8 J. Tominaga, A. V. Kolobov, P. J. Fons, X. Wang, Y. Saito, T. Nakano, M. Hase, S. Murakami, J. Herfort and Y. Takagaki, *Sci. Technol. Adv. Mater.*, 2015, **16**, 014402.
- 9 B. J. Kooi and J. T. M. D. Hosson, *J. Appl. Phys.*, 2002, **92**, 3584–3590.
- 10 J. Tominaga, A. V. Kolobov, P. Fons, T. Nakano and S. Murakami, *Adv. Mater. Interfaces*, 2014, **1**, 1300027.
- 11 X. Yu and J. Robertson, *Sci. Rep.*, 2015, **5**, 12612.
- 12 A. V. Kolobov, P. Fons, A. I. Frenkel, A. L. Ankudinov, J. Tominaga and T. Uruga, *Nat. Mater.*, 2004, **3**, 703–708.
- 13 J. Tominaga, P. Fons, A. Kolobov, T. Shima, T. C. Chong, R. Zhao, H. K. Lee and L. Shi, *Jpn. J. Appl. Phys.*, 2008, **47**, 5763.
- 14 T. Ohyanagi, M. Kitamura, M. Araidai, S. Kato, N. Takaura and K. Shiraishi, *Appl. Phys. Lett.*, 2014, **104**, 252106.
- 15 J. E. Boschker, J. Momand, V. Bragaglia, R. Wang, K. Perumal, A. Giussani, B. J. Kooi, H. Riechert and R. Calarco, *Nano Lett.*, 2014, **14**, 3534–3538.
- 16 R. Wang, J. E. Boschker, E. Bruyer, D. D. Sante, S. Picozzi, K. Perumal, A. Giussani, H. Riechert and R. Calarco, *J. Phys. Chem. C*, 2014, **118**, 29724–29730.
- 17 T. Matsunaga, N. Yamada and Y. Kubota, *Acta Crystallogr. B*, 2004, **60**, 685–691.
- 18 J. E. Boschker, M. Boniardi, A. Redaelli, H. Riechert and R. Calarco, *Appl. Phys. Lett.*, 2015, **106**, 023117.
- 19 A. K. Geim and I. V. Grigorieva, *Nature*, 2013, **499**, 419–425.
- 20 A. Koma, *Thin Solid Films*, 1992, **216**, 72–76.
- 21 Y. Jiang, Y. Wang, M. Chen, Z. Li, C. Song, K. He, L. Wang, X. Chen, X. Ma and Q.-K. Xue, *Phys. Rev. Lett.*, 2012, **108**, 016401.
- 22 Y. Takagaki, A. Giussani, J. Tominaga, U. Jahn and R. Calarco, *J. Phys. Condens. Matter*, 2013, **25**, 345801.
- 23 C. S. Jung, H. S. Kim, H. S. Im, K. Park, J. Park, J.-P. Ahn, S. J. Yoo, J.-G. Kim, J. N. Kim and J. H. Shim, *Nano Lett.*, 2015, **15**, 3923–3930.
- 24 F. Katmis, R. Calarco, K. Perumal, P. Rodenbach, A. Giussani, M. Hanke, A. Proessdorf, A. Trampert, F. Grosse, R. Shayduk, R. Champion, W. Braun and H. Riechert, *Cryst. Growth Des.*, 2011, **11**, 4606–4610.

- 25 R. E. Simpson, M. Krbal, P. Fons, A. V. Kolobov, J. Tominaga, T. Uruga and H. Tanida, *Nano Lett.*, 2010, **10**, 414–419.
- 26 R. Benedictus, A. Böttger and E. J. Mittemeijer, *Phys. Rev. B*, 1996, **54**, 9109–9125.
- 27 A. Giussani, K. Perumal, M. Hanke, P. Rodenbach, H. Riechert and R. Calarco, *Phys. Status Solidi B*, 2012, **249**, 1939–1944.
- 28 J. Goldak, C. S. Barrett, D. Innes and W. Youdelis, *J. Chem. Phys.*, 1966, **44**, 3323–3325.
- 29 I. Friedrich, V. Weidenhof, W. Njoroge, P. Franz and M. Wuttig, *J. Appl. Phys.*, 2000, **87**, 4130–4134.
- 30 R. E. Simpson, P. Fons, A. V. Kolobov, M. Krbal and J. Tominaga, *Appl. Phys. Lett.*, 2012, **100**, 021911.
- 31 N. Takaura, T. Ohyanagi, M. Tai, M. Kinoshita, K. Akita, T. Morikawa, H. Shirakawa, M. Araidai, K. Shiraishi, Y. Saito and J. Tominaga, in *Electron Devices Meeting (IEDM), 2014 IEEE International*, 2014, pp. 29.2.1–29.2.4.
- 32 R. Kilaas, *J. Microsc.*, 1998, **190**, 45–51.
- 33 K. Momma and F. Izumi, *J. Appl. Crystallogr.*, 2011, **44**, 1272–1276.

Table of Contents Graphic and Synopsis



The ground state crystal structure of GeTe-Sb₂Te₃ superlattices is actually a van der Waals heterostructure of Sb₂Te₃ and rhombohedral GeSbTe.