

NJC

Accepted Manuscript



This is an *Accepted Manuscript*, which has been through the Royal Society of Chemistry peer review process and has been accepted for publication.

Accepted Manuscripts are published online shortly after acceptance, before technical editing, formatting and proof reading. Using this free service, authors can make their results available to the community, in citable form, before we publish the edited article. We will replace this *Accepted Manuscript* with the edited and formatted *Advance Article* as soon as it is available.

You can find more information about *Accepted Manuscripts* in the [Information for Authors](#).

Please note that technical editing may introduce minor changes to the text and/or graphics, which may alter content. The journal's standard [Terms & Conditions](#) and the [Ethical guidelines](#) still apply. In no event shall the Royal Society of Chemistry be held responsible for any errors or omissions in this *Accepted Manuscript* or any consequences arising from the use of any information it contains.

Cite this: DOI: 10.1039/xxxxxxxxxx

Exploring the phase explosion of water using SOM-mediated micro-bubbles

Basudev Roy, Mayukh Panja, Subhrokoli Ghosh, Supratim Sengupta, Dibyendu Nandy, and Ayan Banerjee*

Received Date

Accepted Date

DOI: 10.1039/xxxxxxxxxx

www.rsc.org/journalname

The phase explosion of water at a solid-water interface has been typically observed experimentally with the use of pulsed lasers inducing cavitation bubbles near an absorbing surface. Here we show that a tightly focused CW laser beam can be used to achieve phase explosion in a microscopic domain inside a thin film of water in contact with a specially created soft-oxometalate (SOM) coated glass surface. The laser beam induces a homogeneously nucleated micro-bubble at the water-glass (SOM-coated) interface due to high absorptivity of the SOMs at the laser wavelength, and the very high light intensity at the laser spot ($\sim 10\text{s}'$ of MW/cm^2). Increasing the laser power creates an interesting variation in the size of the bubble formed due to convective effects, until a certain power level is reached at which the bubble size increases very drastically. We demonstrate using a simulation based on a solution of the heat equation at the glass substrate-water interface, and by experimental consistency checks, that the size of the bubble essentially traces phase explosion in superheated water. The sudden increase in bubble size occurs when we approach the critical point of water beyond which it cannot exist as a liquid. The size variation of the bubble at lower laser powers also serve as a probe to the microscopic flows of water around the bubble, and could help modulate the size of SOM microbubbles in the context of controlled lithography.

1 Introduction

The critical temperature of water marks the regime where water cannot exist as a liquid under any applied pressure. Under normal boiling, this condition is rarely reached since water bubbles begin forming as a result of heterogeneous nucleation due to the presence of nucleation sites. If the heating occurs very rapidly, though, liquid water may reach a superheated state. Further heating may cause the superheated liquid to approach the spinodal line^{1,2}, and thus the critical temperature T_c , beyond which it becomes unstable, and often catastrophically relax to a two-phase liquid-vapor mixture³. However, the onset of homogeneous nucleation often prevents superheated water from reaching the spinodal line. Homogeneous nucleation⁴⁻⁷ implies the spontaneous formation of vapor bubbles *without* the presence of nucleation sites, and often prevents superheated water from reaching the point of 'explosive boiling' or 'phase explosion' - typically observed when the temperature of the superheated liquid reaches around $0.9T_c$ ⁸. Experimentally, this was first observed when Ruby laser radiation [$\lambda = 690\text{ nm}$] was incident on 100 to 200 μm colored water droplets with the energy density of the laser exceeding a threshold value⁹.

It is well known that such phase explosion often occurs in thin water films in close proximity to absorbing substrates due to strong laser pulses¹⁰, resulting in a variety of applications ranging from eye surgery^{11,12}, to steam cleaning of surfaces¹³, and laser desorption mass spectrometry¹⁴. Such phase explosion experiments are mostly conducted using pulsed lasers focused on metallic absorbing surfaces that are often specific to the wavelength of the pulsed laser. In this paper, we present a technique of investigating phase explosion in water by the use of homogeneously nucleated microbubbles in an aqueous dispersion of a soft oxometalate (SOM)^{15,16}. The SOM dispersion is taken in a glass sample chamber, where the top surface of the chamber is pre-coated in selected regions by thin layers of crystalline SOMs¹⁷. A continuous wave (CW) laser is then tightly focused to a diffraction limited spot (size $\sim \lambda$, where λ is the laser wavelength) on a SOM-coated region, so that the intensity at the focus is \sim few $10\text{s}'$ of MW/cm^2 for less than 100 mW power of the CW laser. Note that the tight focusing addresses the requirement of large light intensity as provided by pulsed lasers typically used to form homogeneously nucleated microbubbles in water. The wavelength of light is chosen based on the fact that SOMs are highly absorptive at 1064 nm¹⁷. The large laser intensity coupled with high absorption of the SOMs leads to the formation of a microbubble in the aqueous dispersion due to explosive boiling of water in the

Indian Institute of Science Education and Research, Kolkata, Mohanpur 741246, India *E-mail: ayan@iiserkol.ac.in

vicinity of the laser 'hot spot' on the glass surface. We proceed to study the size of the microbubble as a function of laser power and obtain clear signatures of phase explosion in water as we describe subsequently. Also, the process of growth of a cavitation bubble formed due to incidence of pulsed laser is an adiabatic process. However, in the presence of a continuous wave laser, the very mechanism is different since energy is exchanged with surroundings through the formation of surface tension gradients that drive Marangoni convection. The only constraint is that the temperature of the point of incidence of the laser is constant in time and so this mechanism can be called isothermal. This paper develops an approach to study the problem in such a case, and in general, helps develop a framework to allow the study of microfluidics in complex boundary conditions.

On another note, we have developed a new method of controlled lithography using thermo-optically manipulated microbubbles in an aqueous dispersion of SOMs¹⁷. The method relies on Marangoni convection that initiates due to the temperature, and resultant surface tension gradient across the bubble which has one of its ends in contact with the laser 'hot spot', and the opposite end in water at a much lower temperature. The Marangoni convection leads to flow of SOM particles in the aqueous dispersion towards the bubble that eventually adhere to the base of the bubble and undergo a phase transition to form crystalline SOMs. Manipulation of the bubble causes a continuous deposition of particles, thus creating controlled patterns¹⁷. The pattern width depends on the size of the micro bubble, which in turn is dependent on the heat dissipated from the hot spot in the aqueous dispersion. Thus, a study of the bubble size as a function of laser intensity provides valuable information about the dissipation of the heat locally, which in turn, is decided by the dynamics of the flow created by the bubble. Such a study also provides a means of manipulating the bubble size upon tuning the laser power and can be very useful for feedback protocols when trying to control the pattern widths in an automated fashion. The controlled creation of small bubbles can also be useful for manipulating the near field of light, having a significant reflectivity at the air-water interface¹⁸, and could also affect surface plasmon propagation¹⁹.

2 Experimental system

The experimental system has been described in detail in Ref.¹⁷. Here we describe it briefly. The apparatus is developed around an optical tweezers system consisting of an inverted microscope (Zeiss Axiovert.A1) with a 100X high numerical aperture (NA) objective lens (NA=1.41). The sample is taken inside a glass sample chamber constructed out of a glass microscope slide (top surface) and a cover slip (bottom surface) stuck together by a double-sided sticky tape. The top slide was pre-coated in microscopic regions with crystalline SOMs using the patterning method described in Ref.¹⁷. The sample consists of an aqueous dispersion of the SOM that was prepared by dispersing 817.6 mg of ammonium heptamolybdate tetrahydrate (from Sigma Aldrich) in 4 mL of water which was warmed until a homogeneous dispersion that scattered laser light was obtained. This led to the formation of SOM nanotube bundles, details of which can be found

in Ref.^{15,16}. The bundles are finally between 2-5 microns in size, and are rather arbitrarily shaped. This dispersion was then cooled to room temperature, and around 100 μl of it was typically taken in the sample chamber. A laser at 1064 nm (Lasever LSR1064ML) of maximum power 500 mW was coupled into the microscope using coupling optics consisting of mirrors and lenses, so that beyond the 100X objective, a focal spot of diameter around 1 μm was obtained. This spot was aligned using the microscope scanning stage on a pre-coated SOM region of the top slide of the sample chamber with the help of a camera (AxioCam) attached to the side-port of the microscope. The maximum power obtained at the focal spot was around 100 mW, which was measured with a power meter probe (Thorlabs PM100D) that was placed on the exit pupil of the objective lens. Due to the high absorption of the coated SOMs and the high laser intensity at the focal spot, a bubble was formed around the laser 'hot spot'. A schematic of the bubble grown on the top slide and the resultant convective flows is shown in Fig. 1(a). We will later go on to show why the formation of the bubble indeed marks superheating in water. The bubble was imaged by the microscope camera and its size was measured using a pixel to physical distance calibration provided in the camera software.

3 Results and Discussions

3.1 Experimental results

3.1.1 Measurement of bubble size

Our first task was to check the size of the bubble as a function of illumination time of the laser. For this, we grew bubbles at different laser powers and measured the bubble size as a function of time with the laser on. The results of that experiment are shown in Fig. 1(b). It is clear that the bubble diameter increased rapidly (in time scales faster than the camera frame rate which is 25fps), after which it became constant, and remained so over a time period of minutes. The diameter also depended on the laser power, and was larger for higher power (note that a comprehensive discussion on all the factors on which bubble size depends is provided in Ref.¹⁷). The reason for the constancy in diameter is understandable. As described earlier, and elaborated in Ref.¹⁷, the bubble leads to rapid accumulation of SOMs at its base due to high convective flows set up around it owing to Marangoni convection. Thus, a ring of SOM material is formed almost immediately tracing the circle encompassing the bubble surface in contact with the top slide, as is shown in Fig. 1(c). More and more SOM particles are deposited with time such that the thickness of the ring increases. This ring essentially prevents the flow of water towards the hot spot, thus effectively stopping further increase in the size of the bubble. It is also an interesting exercise to measure the contact angle of a bubble on the glass substrate as a function of bubble size. We perform this by a method demonstrated in Fig. 1(d) where we use simple trigonometry to determine the contact angle θ as $\arcsin AB/BO$, with AB and BO being the radius of the ring of material around the bubble (shown in dashed lines) and the radius of the bubble, respectively. We measure the two radii for different bubble sizes from images of a bubble and the ring of material assembled at its base. As expected, the contact

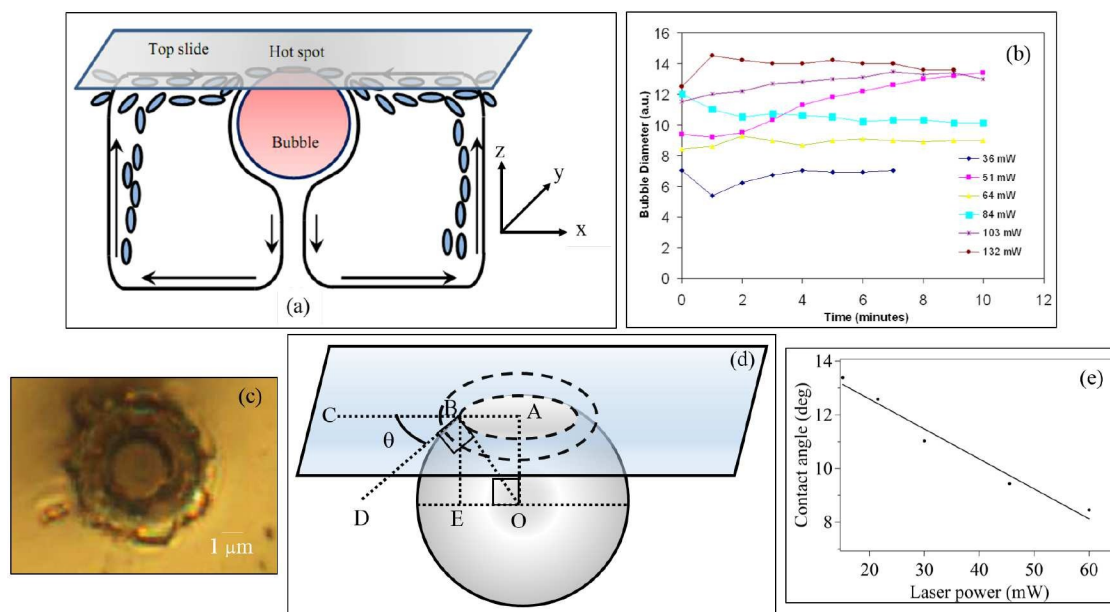


Fig. 1 (a) Schematic of bubble grown at the top slide. The onset of convection currents is depicted as arrows. The blue ovals are SOM particles converging towards the bubble base due to the flow. Figure reproduced from Ref. ¹⁷. The axes are provided to help understand the simulation for determining the temperature profile around the hot spot. (b) Growth of the bubble in a SOM suspension at different laser powers (measured at the microscope entry port). The bubble grows rapidly to a finite diameter and becomes constant as the ring of material is deposited at the base. (c) Material of crystallized SOMs deposited at the base of the bubble in the shape of an annular ring. (d) Our method to determine the contact angle of the bubble on the glass substrate. The angle θ is given by $\arcsin AB/BO$. The ring of material at the bubble base is shown in dashed lines. (e) Plot of contact angles versus bubble diameter.

angle reduces with increasing bubble size, with the variation being linear in nature as shown in the straight line fit to the data shown in Fig. 1(e).

After determining that bubbles reached their equilibrium sizes very quickly, we performed two types of experiments on the size measurement of bubbles:

Type (a): Increasing laser power for a single bubble: In this case, a single bubble was generated by the laser and the laser power was then increased gradually. The size of the bubble was measured from camera images at the different powers (the power values are at the sample plane). At each value of laser power, the bubble diameter was measured after 10 seconds, by which time it reached the equilibrium diameter. Note that, once the bubble is formed, the dissipation of heat from the hot spot in the axial (z) direction occurs through the bubble. The results for one such bubble with increasing laser power is shown in Fig. 2(a). The bubble diameter increases linearly with power. The measured slope of the straight line fit basically shows the rate of growth of the bubble diameter with laser power.

Type (b): Creating different bubbles at different laser powers: In this measurement design, the laser was used to generate new bubbles at different powers. The bubble diameter for each laser power was again measured after 10 seconds. After the measurement, the laser was turned off, and the bubble was allowed to shrink entirely. Then, the laser was turned on at a higher power to generate a new bubble, whose diameter was again measured. This procedure was repeated for different bubbles at increasing laser powers. Therefore, in these experiments, the dissipation of heat from the hot spot produced by the laser occur through the

liquid for all laser powers. The results are shown in Fig. 2(b).

We observe that in Fig. 2(b), the bubble diameter initially grows with laser power at a rate much higher than that in Fig. 2(a) (almost 4 times from a rough estimate of the respective slopes), the growth slows down at intermediate laser powers, and then increases sharply at even higher powers. In fact, we have just two points for the sharp rise of bubble diameter, since on increasing the laser power value beyond around 70 mW, the size of the bubble was too large to fit on the camera field of view. This was repeated for different sets of experiments, and the sharp rise was always obtained.

It is therefore quite clear that the increase of bubble diameter is very different with power for the experimental types (a) and (b). The rather complicated behaviour of the bubble diameter against laser power for case (b) requires a thorough analysis of the system. An explanation would require us to understand the growth of the bubble, how it is related to the hot spot temperature and particularly how heat is dissipated in the aqueous medium, as is described later.

3.1.2 Flow around the bubble

To understand the rate of heat dissipation, information is required about the convective flows set in due to the hot spot. Especially, the variation of the flow velocity with distance from the hot spot is likely to be rather critical in this regard. From the experimental data, we notice that the bubble growth rate reduces considerably after a certain laser power. As we explain subsequently, this can be attributed to convection that leads to the dissipation of heat with increasing effect as the hot spot temperature is in-

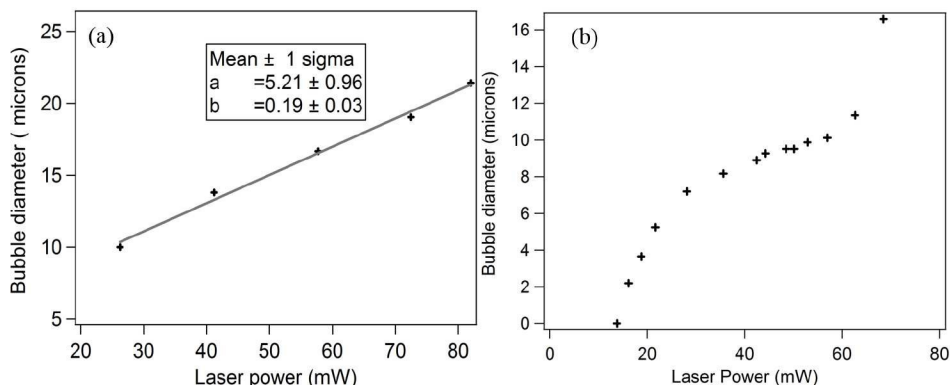
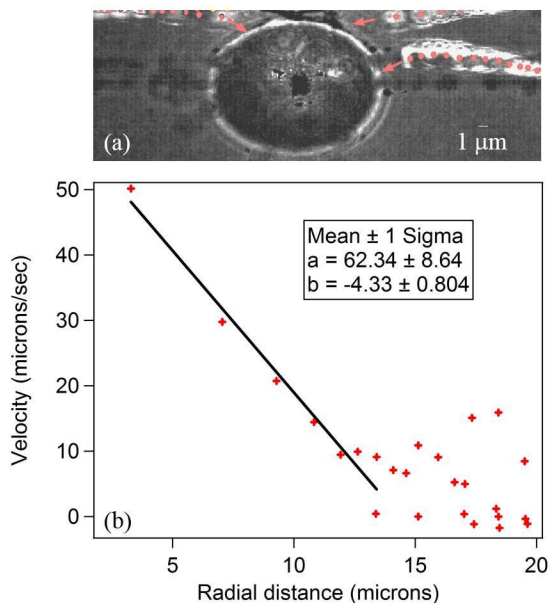


Fig. 2 Bubble diameter as a function of laser intensity at two experimental conditions: (a) Increasing the laser power for a single bubble after it is formed. The bubble diameter increases linearly. (b) Creating bubbles at different laser powers. A bubble is formed at a particular laser power, and then the laser is turned off so the bubble shrinks. The laser power is then changed and a new bubble grown. We find in (b) that there is a threshold power for bubble formation after which the diameter increases linearly with a large slope till a point where a plateau-like regime is formed. As the laser power is increased further, the bubble diameter rises very sharply.



It

Fig. 3 (a) An image of the trajectory of tracer 3 μm diameter polystyrene beads drawn by convection towards the bubble surface. The bubble diameter is around 10 μm . The particle tracking is done by running a particle tracking software on a video of beads approaching the bubble. Positions of beads approaching the bubble from different directions at different time instants are given in pink circles. The variation of radial velocity of tracer polystyrene beads as a function of distance from hot-spot generating the bubble. The initial part of the dataset has been fitted to a straight line of the form $y = a + bx$, with $b = -4.3$.

creased. Now, the bubble can be used to probe the convective flows arising due to the axial temperature gradient along its opposite ends. We attempted to measure the flow velocity by introducing polystyrene beads of diameter 3 μm in the vicinity of a bubble, and measuring their velocity. Fig. 3(a) shows the trajectories of three beads (in the form of pink circles) as they approach the bubble from a distance. The image has been generated after running a particle tracking software on a video of the beads approaching the bubble. We perform a frame by frame analysis to determine the displacement vs time data so as to find out the velocity. The accuracy in determining the velocity is quite high, and basically lies in the correct localization of the center of the bead, which requires a pixel to bead size calibration over individual frames in the video. The standard deviation in such center localization over all the frames considered in a video comes out to be around 5%. This is shown in Fig. 3, with the mean velocity of 20 beads plotted against the distance from the bubble surface. The velocity clearly increases drastically as the beads approach the bubble. We observe that, close to the bubble, the velocity fits well to a straight line with a negative slope of -4.3, which implies that the direction of flow is towards the bubble. Now, the velocity needs to be traced up to the bubble surface, which corresponds to $r = 0$, where r is the distance from the bubble surface. Note that the velocity at $r = 0$ is represented by the y-intercept of the fit to the data shown in Fig. 3, and the value of this intercept would change with for different bubble sizes. The bubble size, in turn, depends on the laser power, and thus the temperature of the hot spot. This is plotted in Fig. 4, where we have converted the laser power into temperature by a method described in detail in Section 3.2.3. Since the only method of determining the flow velocity as a function of the hot spot temperature is by a 3d solution of the Navier Stokes equation that is rather complicated, our approach here - which is backed by experimental data - is somewhat empirical. We check whether the data fits to linear and polynomial fit functions so that we can finally choose the fit that helps match simulation data with experiment the best. We observe that both fit well with similar error bars. Thus, we fit the data to a straight line of the form $y_0 = mT_H + n$ and to a polynomial of order 2 of the

form $y = k_0 + k_1x + k_2x^2$, so that finally, we have for the velocity v_x

$$v_x = -4.33x + (mT_H + n), \text{ or} \quad (1)$$

$$v_x = -4.33x + (k_0 + k_1T_H) + k_2(T_H - T_{th})^2 \quad (2)$$

Where $m = 0.18$, $n = -40$, $k_0 = 142$, $k_1 = 0.52$, and $k_2 = 0.0007$ as obtained from Fig. 4, where T_H is the temperature of the hot spot, and T_{th} is the threshold temperature for bubble formation and has been assumed to be 380 K, as we show later.

3.2 Theory and Simulations

3.2.1 Equilibrium or Critical radius of a bubble

It is well known in homogeneous nucleation theory in superheated liquids that phase bubbles nucleate and are stable only if the radius is larger than the critical radius. The critical radius is defined using the formula²⁰

$$r_c = \frac{2\gamma}{\delta p} \quad (3)$$

where the δp indicates the difference in pressure between the inside of the bubble and the outside and γ indicates the surface tension of water at a specific temperature - the values of which have been taken from standard tables²¹. The pressure of the vapor inside the bubble for a particular value of temperature was calculated from the Antoine equation²².

$$\log_{10}(P) = a - \frac{b}{c+T} \quad (4)$$

where P is the vapor pressure, T is the temperature and a , b , c are component specific constants. The pressure in the water outside the bubble was assumed to be atmospheric pressure as the sample chamber is mounted in open air. Initially, when the bubble is formed, the pressure of the vapor is large such that the critical radius is small. Thus the bubble grows. However, as it grows, the internal pressure drops till the point when the bubble radius becomes equal to the critical radius, any further growth being not allowed. We used this approach to understand the equilibrium radius of a bubble. Note that, the critical radius for a typical water bubble is 20 nm at 500 K.

To determine the equilibrium radius, we developed a model in which we considered a glass-water interface (for simplicity we ignored the SOMs adsorbed on the glass surface) where a high temperature region of 1 μm diameter is created on the glass surface due to the tightly focused trapping beam. We then proceeded to solve the heat equation to find the 3-dimensional temperature distribution inside water due to the focused laser beam assuming a certain temperature of the hot spot. We estimated the critical radius for a bubble at each value of calculated temperature away from the hot spot.

3.2.2 Numerical simulation design to find temperature distribution at the water-glass interface

The simulation was performed according to the schematic shown in Fig. 1(a). We solved the advection-diffusion equation using a finite difference method to model the spatial distribution of tem-

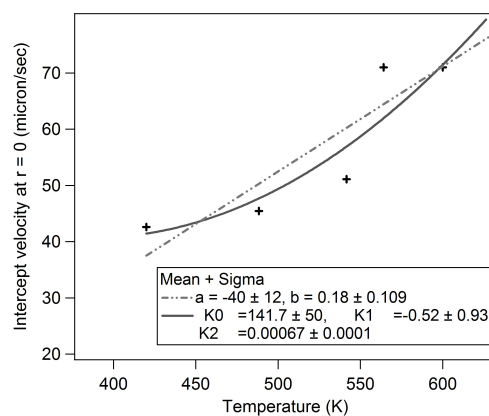


Fig. 4 This figure shows the intercept of the linear region of the velocity-radius curve as a function of hot-spot temperature. This has been fitted with two different types of fits to determine which fits better. The first fit was a straight line of the form $y = a + b x$ and the trend incorporated into eq. 1. The second trend was a quadratic of the form $y = k_0 + k_1x + k_2x^2$. Both the fits seem comparable in terms of errors, and so we applied them both to check best match of the simulations with experimental data

perature (on the glass substrate and the water below it) as a function of time. Note that the time evolution is not at real time scales at which the bubble actually grows (which is very fast, and may be assumed to be in nanoseconds), but rather demonstrate a representative growth as a function of time. We do not solve the Navier Stokes equation coupled with the advection-diffusion equation which would be computationally prohibitively expensive. We instead choose a more realistic albeit empirical approach to model the convective flows in the system, with an analytical function constructed using data from the experiment. First, we just solved the diffusion equation, excluding the advection terms to model the temperature profile on the glass surface, i.e. along the x -axis shown in Fig. 1(a). The laser spot was numerically reproduced by explicitly maintaining the value at the center of the matrix at the desired laser temperature. This solution was used as a boundary condition to model the plane vertically below the laser spot, i.e. along the $-z$ -axis shown in Fig. 1(a). This 2D treatment suffices under the assumption that the dynamics is symmetric around the z -axis²³.

The advection-diffusion partial differential equation when expressed in 2D cartesian co-ordinates is

$$\frac{\partial T}{\partial t} = D \left[\frac{\partial^2 T}{\partial x^2} + \frac{\partial^2 T}{\partial y^2} \right] - v_x \frac{\partial T}{\partial x} - v_y \frac{\partial T}{\partial y} \quad (5)$$

The equation has been discretized using the Alternate Direction Implicit method and then solved by the Tridiagonal matrix solver²⁴. It is essential that we have prior knowledge of the boundary values of the temperature for all time steps. In this particular simulation we assumed that the boundaries are at room temperature, that is 300k, at all times. The boundary conditions used are: (i) the temperature far away (100 μm) from the hot spot is the room temperature, and (ii) there is an insulating surface onto which the hot spot is created. In addition, we have assumed that the diffusion coefficient D does not have a spatial

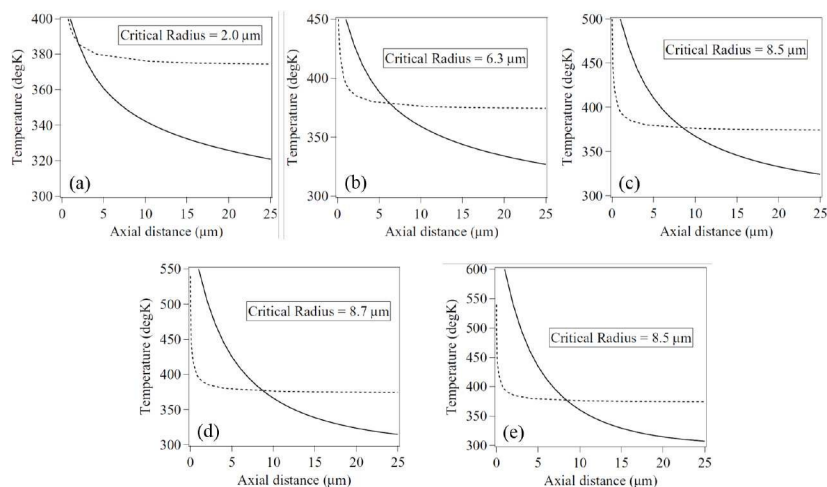


Fig. 5 This figure indicates the behaviour of the critical radius curve (dotted line) as a function of temperature of the vapor in the bubble, and the axial distribution of temperature inside the water (bold line) as a function of distance from hot-spot as heat is dissipated from it. The points at which the curves intersect is basically the critical radius of the bubble at that temperature, and predicts the radius at which the bubble would stop growing. This is then the equilibrium size of the bubble. We demonstrate different equilibrium bubble sizes at different hot spot temperatures: (a) 400, (b) 450, (c) 500, (d) 550, and (e) 600 degK. The corresponding equilibrium bubble radii are indicated in each sub-figure. Note how the radius initially grows and then basically saturates, signifying the onset of convection.

variation and only depends upon the temperature of the hot spot.

3.2.3 Numerical Simulation results

The results of the simulation model are shown in Figs. 5 and 6. The solid curve in Fig. 5 indicates the temperature distribution with axial distance obtained by numerically solving Eq. 5. Initially we ran our simulations with just the diffusive term, i.e. $v = 0$. Figs. 5(a)–(e) demonstrate the method we use to determine the bubble size for different temperatures of the hot spot (400–600 degK in intervals of 50 degK). The critical radius (dotted curve) was calculated from Eqs. 3 and 4. Let us consider Fig. 5(a). In general, a bubble nucleated with radius larger than the critical radius would be super-critical and therefore grow at this temperature. However, the temperature gradient would prevent the bubble from growing indefinitely. At around 380 K, the critical radius curve intersects the temperature curve, which implies that the axial distance corresponding to that particular temperature equals the critical radius of a bubble. Hence the bubble stops growing after its radius increases to $2 \mu\text{m}$, which corresponds to the critical radius at 380K. This is indeed the temperature T_{th} as defined in Eq. 2. Thus, with different starting temperatures of the hot spot, we obtain different equilibrium radii of the bubble, since the point of intersection of the critical radius and temperature distribution would accordingly shift to different axial distances (larger for higher hot spot temperatures). Thus, we observe that the equilibrium radius is only around $2 \mu\text{m}$ at around 400K, and increases to $8.5 \mu\text{m}$ for 500 degK, after which it seems to saturate with no increase seen even at 600 degK. This marks the onset of convection at higher hot-spot temperatures, as we shall discuss later. Here we assume, as mentioned earlier, that the hot spot is formed as soon as the heating laser is turned on and dissipates the heat through water faster than the bubble growth time scale.

The nature of bubble growth with time due to *diffusion only* are shown in Fig. 6(a)–(c). The temperature of the hot spot was

550K for this particular simulation, and the evolution of the temperature distribution with axial distance as a function of time is displayed in the figures. The calculated bubble size at each instant of time, is shown by the bold black line. But we failed to recover the behaviour for intermediate laser powers in the curve obtained from experiment, shown in Fig. 2(b). This led us to add an extra convective term in the diffusion equation to take into account the flow of water that enhances the dissipation of heat from the hot-spot. The convection velocity used for the heat dissipation simulation uses the empirical trends that we obtained from the experiment, as defined in Eqs. 1 and 2. The convective/advective term impedes the growth of the bubble with time, as is apparent from Figs 6(d)–(f). However, it is also clear that even with the advective term included, the bubble grows quite rapidly in early times (as seen in in Fig. 6(d)), which implies that in such times the bubble growth is essentially diffusion driven. At later times, as shown in Figs. 6(e) and (f), the horizontal convective flows (that are converging in nature) dominate, causing large dissipation of heat which prevent the bubble from growing further. This also explains the large value of the slope between laser powers 14–28 mW in the data for experimental condition 2 as shown in Fig. 2(b), since in this regime the equilibrium diameter of the bubbles is rather small so that the diffusion term dominates over the advective term, and the size of the bubbles thus increase rapidly as the laser power is increased.

3.2.4 Matching simulation results with experiment

Note that the simulation deals with the temperature of the hot spot, whereas experimentally, we have only the laser power that we can measure. As the aim is to match the simulation with experimental results, we need to obtain an appropriate conversion of laser power into temperature. The bubble formation begins when the hot spot temperature is 382 K (at which point the critical radius curve starts intersecting the heat distribution curve in

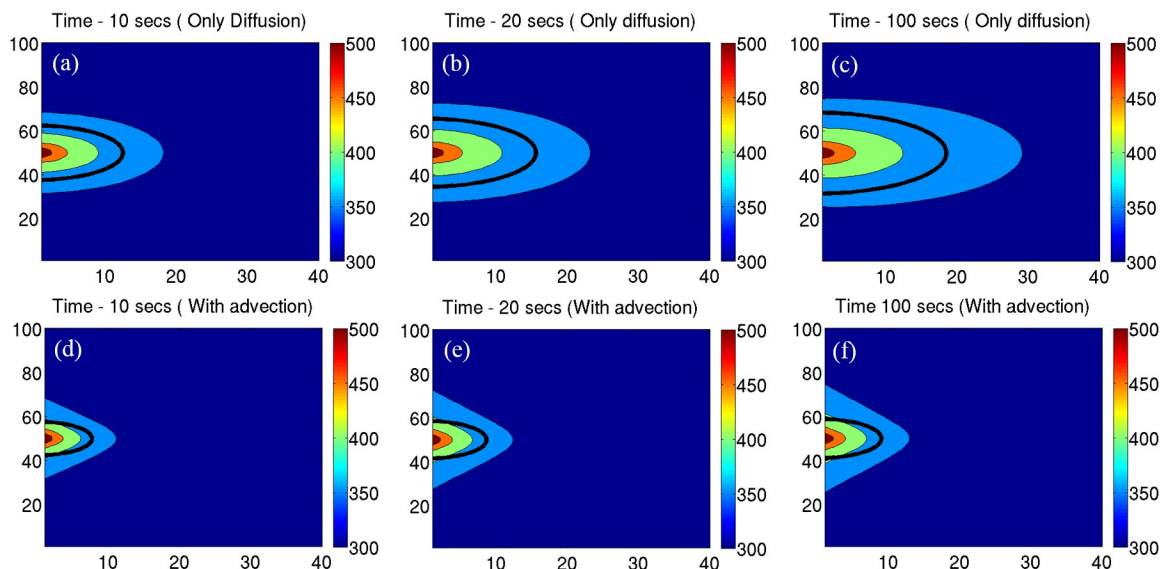


Fig. 6 Simulation results to determine the evolution of bubble size with time with only diffusion incorporated in the model (figs. (a) - (c)), and diffusion + advection (figs. (d) - (f)). The hot spot temperature is 550K. The bubble size is indicated with the black bold line in each figure. The size is determined from the intersection of the critical radius curve and axial temperature distribution due to the hot spot as described in Fig. 3. It is clear that the bubble size increases continuously in Figs. (a) - (c), while it is almost constant in Fig. (e) and (f) with advection turned on. Advection also causes a smaller bubble size at a given time due to slower heat dissipation.

Fig. 5) which corresponds to a laser power of 16 mW. Using this value of threshold laser power and assuming a linear relationship of temperature with laser power, then, with the hot spot being at room temperature (i.e. 300K) when the laser beam is turned off, the temperature of water is found to be 644 K at the laser power of 70 mW. This is the power level at which there is a sharp increase in size of the bubble (assuming 16 mW to have increased the temperature by 80K). This indeed corresponds to the critical temperature of water^{25,26} where the surface tension tends to zero, while the conductivity of water tends to infinity. Thus, we are likely to be directly observing the onset of the 'phase explosion' point in water, or the crossing of the spinodal line^{1,2} at ambient pressure such that no tensile stress is required to perform the phase transition making the bubble formation progress as explosive vaporization.

It is clear that bubble formation takes place only beyond a certain temperature of the hot spot. As this temperature is increased further, the formation of the bubble leads to convective flows which increase with the size of the bubble. This is because larger bubbles lead to larger temperature (resultantly surface tension) gradients across them, and subsequently stronger Marangoni flows. The experimental results clearly demonstrate an inward flow towards the bubble, which implies a negative sign for the flow velocity that reduces the dissipation of heat from the hot spot, thus impeding the growth of the bubble. The theoretically obtained curves are shown in Fig. 7 at different values of convective flows, (different colored continuous lines) along with the experimentally observed trend for comparison (in crosses). The red curve in Fig. 7 depicts the increase in bubble radius as a function of hot spot temperature when the convection velocity is made zero. As can be seen, there is *no* plateau-like regime formed as the radius increases monotonically.

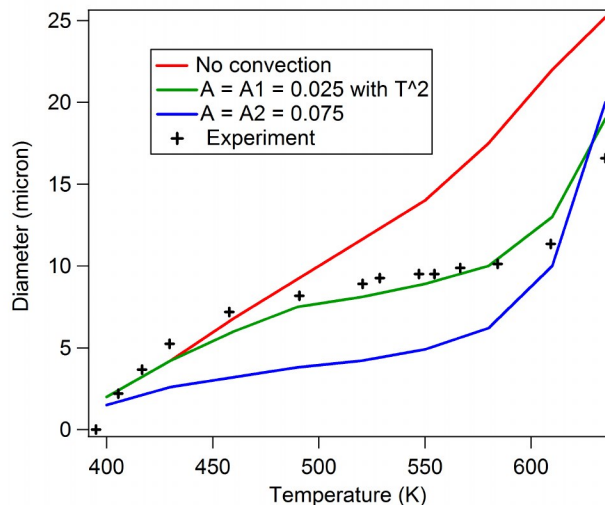


Fig. 7 This indicates the theoretically computed diameters as a function of hot spot temperature. It shows how the curve compares to the experimentally obtained curve of the size of the bubble with illumination intensity. The plateau is obtained as the convection term is introduced with the velocity given by the eq. 1. When the coefficient $A=0.025$ the plateau is obtained. When the value of A is made even larger ($A=0.075$), the radius of the bubble becomes too small in comparison to the experiment. To get a better match with the trend of the experimental curve, the intercept of the Eq. 6 has been modified to the form the Eq. 7 while having $A=0.025$.

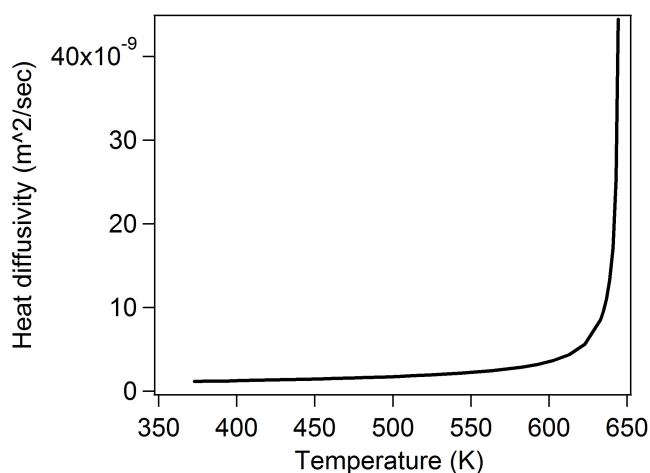


Fig. 8 This plot shows the value of the thermal diffusivity as a function of temperature. The value of the diffusivity becomes very large as the critical temperature of water is reached. The different constants used for the diffusivity of water are obtained from the engineering tables²⁷.

Note that in this particular model, we are attempting to understand the situation before the bubble reaches equilibrium, or at time scales before the bubble is formed and when it is growing. The flow velocity trends in Eqs. 1 and 2 are for bubbles under equilibrium, so that the magnitude of the velocities would be different at times prior to this. Therefore, we use a scale factor to control the magnitude of the velocity. Thus, the new equations for the velocity become:

$$v_x = A(-4.33x + (mT_H + n)), \text{ and} \quad (6)$$

$$v_x = A(-4.33x + (k_0 + k_1T_H) + k_2(T_H - T_{th})^2) \quad (7)$$

As the magnitude of convection velocity is increased to $A = 0.01$ of the velocity with the equilibrium bubble, the plateau formation is gradually observed. The radius of the bubble for $A = 0.075$ becomes too small as compared to the experiment. We observe that with a linear fit of the form as in Eq. 6 is unable to fit the intercept of the straight line in Fig. 4 is not able to reproduce the plateau formation in the radius. However, if a quadratic fit of the nature of Eq. 7 is used, the fit matches the experimental curve rather well, with $A = 0.025$. We have also used the variation of the diffusion coefficient as a function of temperature, as shown in Fig. 8, while doing the simulations. The diffusivity of water depends upon thermal conductivity, specific heat of vapor and density of water as $D = C_p / \kappa \rho$. The values of specific heat (C_p), thermal conductivity (κ) and density of water (ρ) were obtained from standard engineering tables²⁷. Thus, as the temperature approaches the critical temperature, the value of diffusivity shoots up as shown in Fig. 8, so that the size of the bubble from simulation results match quite well with that from experiments. This provides further confirmation of the fact that we do indeed approach the spinodal limit in water in our experiments of Type (b).

Thus, aided by the understanding of the results we obtained in Type (b) experiments, we are also able to fully comprehend the

results obtained for Type (a). In that case, a single bubble was formed and the laser power subsequently increased for the same bubble. The increase in laser power increases the radial (along the x-axis) temperature profile which in turn modulates the temperature distribution in the liquid leading to an increase in temperature of the liquid near the bubble surface. For that enhanced temperature, the critical radius is smaller than the radius of the bubble which therefore becomes super-critical and starts expanding. The expansion continues until the bubble-water interface temperature intersects the new critical radius curve corresponding to the enhanced laser power. Since the laser power is increased after the bubble has formed, it is clear that the air inside the bubble provides some sort of a 'shielding effect' due to its much lower thermal conductivity compared to water (almost 30 times²⁸), which prevents a larger increase in temperature near the bubble surface. The equilibrium radii of the bubble at each laser power is reached by an interplay of diffusion and convective flows, but as the laser power is subsequently increased, the bubble grows at a rate that is similar to the region where convective effects start dominating in experiments of Type (b). This can be easily seen by a quantitative comparison of the slopes of the bubble diameter vs laser power plots in Figs. 2(a) and (b). The slope of the straight line in Fig. 2(a) is much lesser than the diffusion-dominated region of Fig. 2(b) (i.e. the region between laser powers ~ 16 -30 mW), but similar to that in the region where convection sets in (i.e. between laser powers ~ 35 -60 mW). The sharp increase in diameter due to hot spot temperatures nearing the critical temperature of water is never reached in Type (a) experiments since the water is not in contact with the hot spot on the glass substrate due to the presence of the air-bubble. It can be hypothesized that the phase explosion akin to that seen in Type (b) experiments may be seen in this case as well for much higher laser powers than what we can presently achieve in our laboratory.

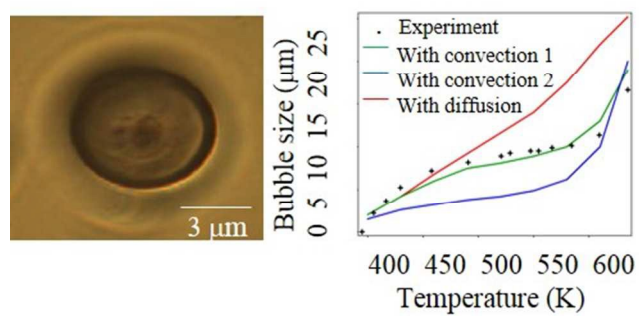
4 Conclusions

We have explored the spinodal limit in water by growing homogeneously nucleated bubbles in a soft oxometalate-water dispersion in contact with a glass substrate pre-coated with SOMs. The bubbles are grown by tightly focusing an optical tweezers laser beam at 1064 nm, where the soft oxometalates are absorbing, on the pre-coated soft oxometalates so as to create a hot spot on the glass substrate. The size of the bubble is determined by the temperature of the hot spot that is controlled by the laser power. We observe that the equilibrium size of bubbles created at different laser powers is a function of the latter. The size increases linearly at a rather fast rate initially, and then slows down remarkably with change in laser power; before it increases drastically as the power is increased further. We explain this observation by a numerical simulation of the temperature profile around the hot spot created on the glass surface, where we determine the bubble size by calculating the critical radius (i.e. the maximum allowed size of the bubble) at each axial distance with a known value of temperature. The temperature of the hot-spot is held constant in the simulation. We observe that the experimental trend can be reproduced from simulation only by considering convective flows of water set in by the formation of the bubble

- the effect of which increase as the bubble size increases, thus creating a large temperature gradient across it. The convection velocities are estimated experimentally by measuring the flow of polystyrene beads for equilibrium bubbles, and fitted to experimental data by a scale factor which we determine empirically. The simulated data matches with experiments quite well over the entire range of hot spot temperature only when we consider the values of diffusivity of water as a function of temperature, with the diffusivity increasing drastically near the critical point. This also establishes the fact that we do indeed approach the phase explosion point or spinodal limit of water. The bubble can thus serve as an efficient probe for investigating flows on a microscopic domain. The dependence of bubble diameter on laser power is also useful in a technique we have recently developed in forming controlled patterns on a glass substrate by using a thermo-optically manipulated bubble¹⁷. The pattern width depends on the bubble size, and knowing the laser power dependence of the bubble size would enable automation of the entire patterning process in the future.

References

- 1 V. Ginzburg and L. Landau, *J. Exptl. Theoret. Phys. (USSR)*, 1950, **20**, 1064–1070.
- 2 J. W. Cahn and J. E. Hilliard, *J. Chem. Phys.*, 1960, **31**, 688–699.
- 3 A. V. Kuzikovskii, *Izv. Vyssh. Uchebn. Zaved*, 1970, **5**, 89–95.
- 4 M. Volmer and A. Weber, *Z. Physikal. Chemie.*, 1925, **119**, 277–285.
- 5 R. Becker and W. Doring, *Ann. Phys.*, 1935, **24**, 719–752.
- 6 J. Frenkel, *J. Chem. Phys.*, 1939, **7**, 200–201.
- 7 J. B. Zeldovich, *Acta Physicochemica. (USSR)*, 1943, **18**, 1–3.
- 8 X. Xu, *Appl. Surf. Sci.*, 2002, **197**, 61–66.
- 9 V. Kostin, V. A. Pogodaev, S. Khmelevtsov and L. K. Chistyakova, *J. Exptl. Theoret. Phys.*, 1974, **66**, 1970–1972.
- 10 A. Vogel, N. Linz, S. Preidank and G. Paltauf, *Phys. Rev. Lett.*, 2008, **100**, 038102.
- 11 A. Vogel, J. Noack, G. Huttman and G. Paltauf, *Appl. Phys. B*, 2005, **81**, 1015–1047.
- 12 H. Soong and J. B. Malta, *Am. J. Ophthalmol.*, 2009, **147**, 189–197.
- 13 A. Tam, H. K. Park and C. P. Grigoropoulos, *Appl. Surf. Sci.*, 1998, **127**, 721–725.
- 14 Y. Dou, L. V. Zhigilei, N. Winograd and B. J. Garrison, *J. Phys. Chem. A*, 2001, **105**, 2748–2755.
- 15 S. Roy, *Comments Inorg. Chem.*, 2011, **32**, 113.
- 16 S. Roy and A. Hor, *J. Mol. Eng. Mater.*, 2014, **2**, 1402001.
- 17 B. Roy, M. Arya, P. Thomas, J. K. Jurgschat, K. V. Rao, A. Banerjee, C. Reddy and S. Roy, *Langmuir*, 2013, **29**, 14733–14742.
- 18 X. Mao, J. Waldeisen, B. Juluri and T. J. Huang, *Lab. Chip.*, 2007, **7**, 1303–1308.
- 19 C. Zhao, Y. Liu, Y. Zhao, N. Fang and T. J. Huang, *Nat. Commun.*, 2013, **4**, 2305.
- 20 C. Sagui and M. Grant, *Phys. Rev. E*, 1999, **59**, 4175–4187.
- 21 V. B. N. Vargaftik, N. B. and L. D. Voljak, *J. Phys. Chem. Ref. Data*, 1983, **12**, 817–820.
- 22 R. Reid, *Properties of Gases and Liquids*, 2nd ed., McGraw-Hill Inc., 1966.
- 23 J. M. A. Ashbourn, L. Geris, A. Gerisch and C. J. S. Young, *Proceedings of the Royal Society of London A*, 2010, **466**, 1621–1643.
- 24 W. Press, S. A. Teukolsky, T. W. Vetterling and P. B. Flannery, *Numerical Recipes in Fortran*, Cambridge University Press India Pvt. Ltd, 1998.
- 25 P. Atkins and J. d. Paula, *Physical Chemistry*, 8th Ed., W. H. Freeman, 2006, p. 21.
- 26 P. Rock, *Chemical Thermodynamics*, Macmillan, 1969, p. 123.
- 27 http://www.engineeringtoolbox.com/water-thermal-properties-d_162.html.
- 28 http://www.engineeringtoolbox.com/water-thermal-properties-d_429.html.



We study the growth of a homogeneously nucleated micro-bubble amidst convective flows in water superheated close to the critical point.