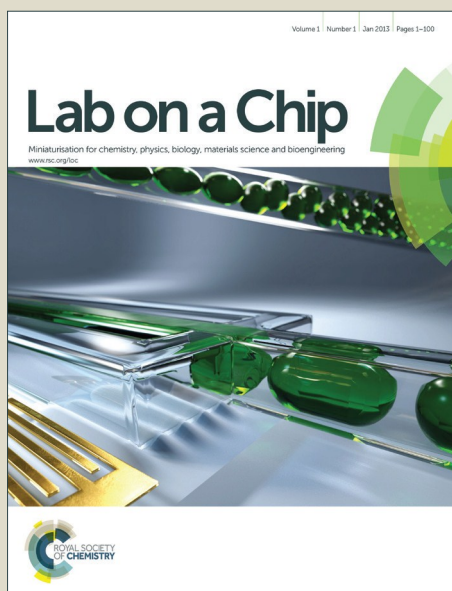


Lab on a Chip

Accepted Manuscript

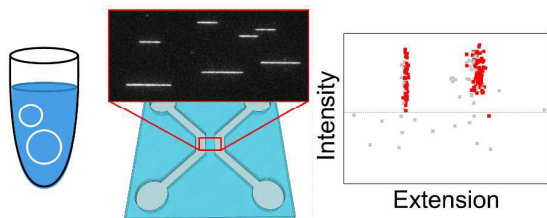


This is an *Accepted Manuscript*, which has been through the Royal Society of Chemistry peer review process and has been accepted for publication.

Accepted Manuscripts are published online shortly after acceptance, before technical editing, formatting and proof reading. Using this free service, authors can make their results available to the community, in citable form, before we publish the edited article. We will replace this *Accepted Manuscript* with the edited and formatted *Advance Article* as soon as it is available.

You can find more information about *Accepted Manuscripts* in the [Information for Authors](#).

Please note that technical editing may introduce minor changes to the text and/or graphics, which may alter content. The journal's standard [Terms & Conditions](#) and the [Ethical guidelines](#) still apply. In no event shall the Royal Society of Chemistry be held responsible for any errors or omissions in this *Accepted Manuscript* or any consequences arising from the use of any information it contains.



We demonstrate how circular bacterial plasmids can be automatically sized, and discriminated from linear DNA fragments, via stretching in nanochannels.

COMMUNICATION

Fast size-determination of intact bacterial plasmids using nanofluidic channels

Cite this: DOI: 10.1039/x0xx00000x

K. Frykholm,^a L. K. Nyberg,^a E. Lagerstedt,^b C. Noble,^{b, #} J. Fritzsche,^c N. Karami,^d T. Ambjörnsson,^b L. Sandegren,^e and F. Westerlund^a

Received 00th January 2012,

Accepted 00th January 2012

DOI: 10.1039/x0xx00000x

www.rsc.org/

We demonstrate how nanofluidic channels can be used as a tool to rapidly determine the number and sizes of plasmids in bacterial isolates. Each step can be automated at low cost opening up for general use in microbiology labs.

Antibiotic resistance in bacteria is a global and rapidly increasing threat to human health.¹ Antibacterial resistance is acquired and spread among bacterial pathogens mainly through horizontal transfer of resistance genes located on plasmids: extrachromosomal, in most cases circular, double-stranded DNA molecules capable of autonomous replication.^{2,3}

Identification and characterization of the plasmid content in bacterial samples is crucial for studies of the spread of antibacterial resistance. Two commonly used methods for characterization of the sizes of plasmids are S1 nuclease linearization of plasmid DNA in cells embedded in agarose, followed by pulsed field gel electrophoresis (S1/PFGE), enabling plasmid detection and size determination⁴, and whole-plasmid DNA sequencing with next generation sequencing techniques⁵. The latter provides basepair resolution and is the most accurate method for plasmid characterization, but is hindered by the non-trivial assembly of DNA reads from large plasmids, especially when more than one plasmid is present in the sample. Furthermore, the highly dynamic behavior of plasmids makes sequencing of all possible plasmid compositions more or less infeasible. Therefore, S1/PFGE is still the gold standard for size determination of large plasmids, but the protocols are typically lab intense, take several days to complete and the results are often of varying quality (see discussion below).

We here present nanofluidic channels as an alternative method to characterize the plasmid content in bacterial isolates by size. Nanofluidic channels, in combination with fluorescence microscopy, have become increasingly utilized for studies of fluorescently labeled single DNA molecules, including investigations of fundamental DNA polymer physics,^{6,7} optical DNA mapping⁸⁻¹² and the physical properties of protein-DNA

complexes.¹³⁻¹⁷ When confined to channels of dimensions smaller than its radius of gyration, DNA molecules are forced to stretch out along the channel. The extension of the DNA scales linearly with its contour length, enabling direct measurements of the sizes of individual DNA molecules.¹⁸ Since the DNA molecules confined to nanofluidic channels are manipulated and stretched without being attached to any handles, circular DNA, like plasmids, can be conveniently studied.¹⁹

In a recent study, we compared the physical properties of confined circular and linear DNA. We concluded two main characteristics that clearly distinguish circular DNA pieces from linear.¹⁹ First, since a circular DNA molecule is double folded in the nanochannel, its emission intensity is approximately two times higher compared to a linear DNA molecule. Second, since the local DNA concentration inside the channel is higher for circular DNA, it fluctuates less in extension than a corresponding linear DNA and hence has a lower standard deviation in extension. We here use these two observables to automatically discriminate intact circular plasmids from linear DNA fragments in a nanofluidic device.

We investigate the plasmid content of five clinical bacterial isolates (denoted 008, 033, 071, 163 and 299). First, we demonstrate how to discriminate circular DNA from linear by introducing cut-off values for the emission intensity and the standard deviation in fluctuation. Next, we show how to obtain the sizes of the selected molecules with the help of a reference plasmid of known size. The plasmids of the isolates in this study have previously been characterized by conventional molecular methods, such as S1/PFGE, and high-throughput sequencing.²⁰ All five isolates carry plasmids coding for extended spectrum beta lactamases (ESBLs), and in addition isolates 008, 033 and 299 contain additional beta-lactamases and genes encoding resistance to aminoglycosides, trimethoprim, sulphonamides and macrolides. Isolate 033 also contains genes for resistance to chloramphenicol and tetracycline.

For experiments, extracted plasmids were labeled with the fluorescent dye YOYO-1 (YOYO) and inserted into nanofluidic channels with dimensions of 150x150 nm², using pressure-driven

flow (Fig. 1A). Subsequently, 200 images were taken of each field of view (for details on the experimental procedure we refer to the Supporting Information). Fig. 1B shows a snapshot image of one of the plasmid samples (isolate 163) in the nanochannels where many individual DNA molecules are observed in the same field of view. This particular sample contains plasmids of two different sizes; examples of both are seen in the image. Furthermore, a long DNA fragment (white arrow) with weaker emission intensity is observed, suggesting that this is a linear piece of DNA.

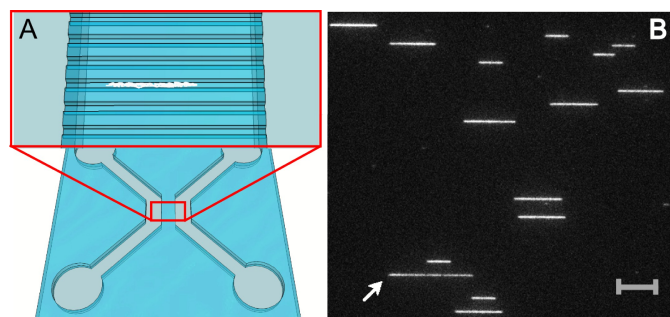


Fig. 1 (A) Schematic illustration of the design of the nanofluidic chip with four inlets connected two and two by microchannels and spanned by nanochannels. The close-up illustrates the nanochannels with an enclosed DNA molecule in white. (B) A snapshot microscopy image of one field of view of nanoconfined plasmids in $150 \times 150 \text{ nm}^2$ nanochannels. This sample (isolate 163) contains plasmids of two different sizes. Note the longer DNA fragment, most likely a linearized plasmid, with lower emission intensity (indicated by white arrow). Scale bar corresponds to $10 \mu\text{m}$.

The presence of linearized plasmids is expected since YOYO in its excited state gives rise to reactive oxygen species that cause single-strand breaks on DNA.²¹ The occurrence of two such breaks on opposite strands and in close proximity to each other, destabilizes the duplex between the breaks and results in a double-strand break and linearization of the circular DNA.¹⁹ This linearization can occur before introduction of the plasmids into the nanochannels but, importantly, also while the movie is recorded. Also, there is the possibility of finding residual linear DNA fragments from the bacterial chromosome from the preparation of the sample.

To analyze the data, a MatLab-based, in-house developed and automated program was used (described in detail in the Supporting Information). In short, the program receives the microscopy image stacks as input, and in each frame detects the edges of the DNA molecules and extracts extensions and intensities, with standard deviations, for each piece of DNA. Plasmids that break and unfold to the linear configuration while the movie is recorded are easily discarded from the data analysis, since they show a large decrease in emission intensity and simultaneous increase in extension as the movie progresses. We construct colormaps, where the average intensity of the plasmid is plotted against its average extension. The color of the symbol represents a cut-off value of 10% for the standard deviation normalized with the mean extension (Figure 2). The colormaps in Figure 2A-C show groups of molecules with the common features of a uniform size, high emission intensity and a small standard deviation of the extension. Our previous study suggests that these molecules are circular.¹⁹ We can thus set thresholds, both in intensity and fluctuations, to automatically discriminate circular DNA molecules from linear fragments in the sample. The threshold values used here can be justified by plotting the normalized standard deviation as a function of the mean extension of the plasmid, with intensities indicated by color (Supporting Information, Figure S2).

It is important to point out that the cut-offs in intensity and standard deviation in extension can be more or less strict. By using a cut-off value of 10% in extension fluctuation we discard some molecules that have a size and emission intensity that suggests that they are circular. However, we prefer this fairly strict cut-off to avoid that linear fragments are mistakenly classified as plasmids. The fact that we can separate circular DNA from linear by two parameters furthermore enables identification of intact plasmids in lower quality data, such as in Figure 2D. Finally, we note a spread in emission intensity of the plasmids, which stems from uneven staining by YOYO, a well-established fact for this DNA dye.²² Interestingly, the emission intensity does not seem to affect the extension for the plasmids, suggesting that potentially plasmids are less sensitive to the amount of dye bound than linear DNA.

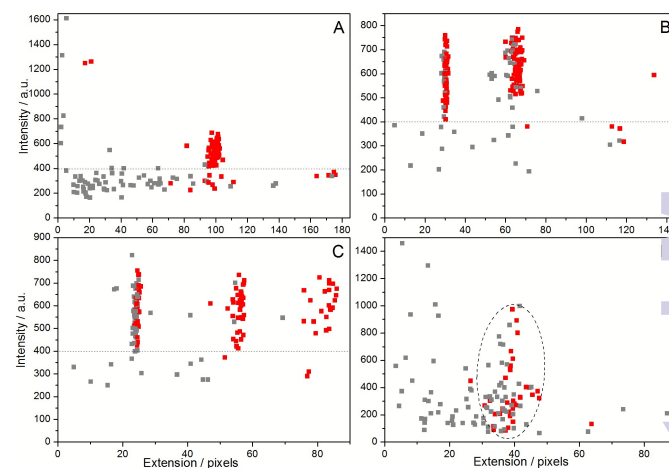


Fig. 2. Colormaps for four different plasmid samples from bacterial isolates: 033 (A), 163 (B), 008 (C) and 071 (D), showing measured fluorescence intensity versus extension. Each square represents a single molecule and red color indicates a normalized standard deviation of the extension lower than 10%. The dashed lines in (A), (B) and (C) represent a threshold in intensity above which groups of molecules with small standard deviation in extension (red squares) are observed. The isolate in (A) is shown to contain one, (B) two and (C) three plasmids of different sizes, respectively. In (D) there is no clear intensity threshold, but molecules with low standard deviation of the extension are still clustered in a narrow extension range (indicated by dashed ellipse).

The extensions of the plasmids presented in Figure 2 are given in pixels. To convert the observed molecular extensions to actual plasmid sizes in basepairs a circular reference DNA of known size is needed. Here, we have used the fully sequenced plasmid R100²³ and retrieved its size, 94.3 kbp, from the RefSeq data base (<http://www.ncbi.nlm.nih.gov/refseq/>). Under the experimental conditions used here, the average extension of R100 was determined to be 49.9 ± 3.1 pixels based on three individual experiments (in total 192 single plasmids). Using this size standard, the sizes of the plasmids in the bacterial isolates were calculated and found to be reproducible (Supporting Information, Table S1). For all isolates the sizes obtained using nanofluidics are in good agreement with what is presented in the previous study using S1/PFGE.²⁰ This is shown in Figure 3 where a linear regression of the data for the two techniques (from Table S1) yields an R^2 value of 0.9986 and a slope of 1.056. It is, however, important to remember that we at this moment cannot judge whether the largest errors are in the S1/PFGE method or in the nanochannel measurements.

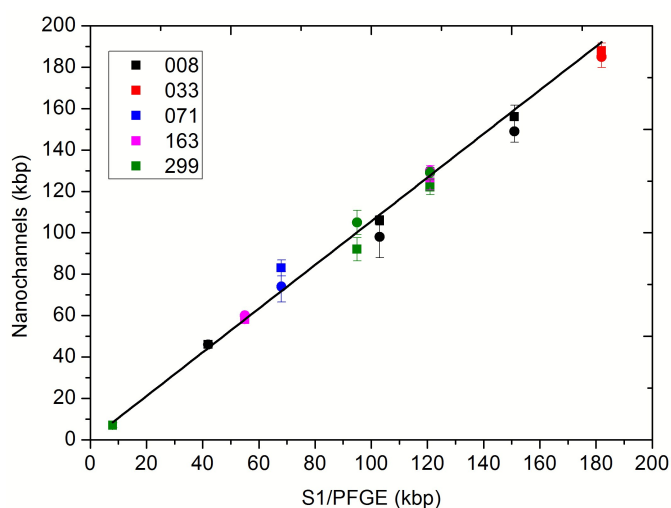


Fig. 3. A comparison of the results obtained from nanofluidics and S1/PFGE measurements. Each isolate was measured twice, indicated by circles and squares. The isolates are indicated by color with 008 in black, 033 in red, 071 in blue, 163 in magenta and 299 in green. The black line is a linear regression with $R^2 = 0.9986$ and a slope of 1.056. The data can also be found in Table S1 (Supporting Information).

There are several advantages of using nanofluidics compared to the gold standard for plasmid sizing, S1/PFGE. First, in nanofluidic channels, the extension of the DNA in the channels varies linearly with the contour length for all relevant sizes.¹⁸ This is a clear advantage for large plasmids. S1/PFGE has a non-linear separation that requires a reference ladder of DNAs with different sizes and even with the ladder it is sometimes hard to accurately interpolate the size of the plasmid. Also, the gel resolution interval requires separate conditions to be used for small and large plasmids for accurate size estimation. Plasmids can be detected up to the limit of S1/PFGE separation but with a decreasing accuracy of size determination with increasing size. With the experimental setup used here, we detected plasmids within a size range of 8–180 kbp (Figure 3) from the same field of view, where the extension of the largest plasmid corresponds to about 100 pixels out of 512 available. Hence, the upper limit of what fits into one field of view is over 900 kbp, well beyond the expected size of plasmids of interest.²⁴

Second, nanofluidic measurements are done on the single plasmid level and hence it is possible to detect “rare” plasmids that would be difficult to detect with S1/PFGE. For example, plasmids from less abundant bacteria would be rare in plasmid extracts from a mix of bacteria but still efficiently detected in our device.

Third, since we measure an independent extension of each plasmid we improve the statistics of our measurements with each additional molecule investigated. In Figure S3 (Supporting Information) we show that with the cut-offs used here, the standard error of the mean extension is in general as low as about 1%. Furthermore, as expected for independent measurements, the standard error of the mean extension decreases as approximately $1/\sqrt{N}$ for $N > 20$ (with N being the number of molecules). This is in sharp contrast to S1/PFGE measurements where all plasmids of a certain size in a sample jointly form one band in the gel.

Fourth, with nanofluidics there is no need for linearization of the plasmids. For S1/PFGE, plasmids are partially cleaved by S1 nuclease. However, if the plasmid is cut in two places it will appear as two bands and information regarding the number of plasmids in the sample and their sizes is misinterpreted. Furthermore, uncut and/or supercoiled plasmids might give false bands. In our nanofluidics experiments, on the other hand, circles are easily

distinguished from linear fragments and supercoils, ensuring that we are only measuring the sizes of intact relaxed plasmids.

Fifth, the nanofluidic assay is significantly faster, and less lab intense than S1/PFGE. After extraction of the plasmids from the bacteria, using standard microbiology kits, the only remaining step in sample preparation before loading the sample into the chip is to mix the DNA with the commercially available fluorescent dye YOYO. In the current study, the time from mixing the DNA and dye to finalized experiment is ~2–3 hours, including data analysis, which should be compared to several days for completing a S1/PFGE experiment. Furthermore, there is room for improvement: Here, insertion of the plasmids into the channels and recording of movies were performed manually, while a recent study demonstrates that nanofluidic experiments can be automated for high throughput measurements.²⁵ Importantly, the assay presented here is directly applicable to the instrument used in the study in reference 25, where the only technical difference is that we record several (200) images, whereas Cao et al. take a single snap shot of each field of view.

Sixth, our nanofluidics approach uses a significantly lower amount of sample compared to traditional techniques. In the experiments presented here we add 20 μl with a typical DNA concentration of 0.25 ng/ μl . Since we measure the lengths of single DNA molecules, we foresee that the DNA concentration can be decreased by several orders of magnitude, the only difference will be that the measurements take longer time to complete. As an outlook, the small amount of sample required implies that it will be possible to use our technique to investigate the plasmid composition of a clinical sample directly after collection, without the time-consuming procedure of culturing bacteria. This could for example be beneficial during resistance outbreaks where it is important to quickly identify if a patient is carrying a specific plasmid. The small amounts of sample needed also means that the assay is directly compatible with fully integrated Lab-on-a-Chip devices, where an ultimate goal would be to have a clinical sample loaded in one end and the plasmids sized in the other.

We foresee that an automated version of the size determination of bacterial plasmids using nanofluidics presented here has general applicability in microbiology labs around the world. The method is based on the use of fluorescence microscopy and the chemicals used are commercially available at low prices and used in extremely small amounts. Furthermore, the possibility of making disposable chips in plastic²⁶ will significantly reduce the cost compared to the nanofabricated devices used in the current version of the assay.

Conclusions

We demonstrate how nanofluidic channels can be used as a method for rapid and reliable characterization of the plasmid content in bacterial isolates. The method gives a direct indication of the diversity in plasmid content and plasmid sizes can be determined with high reproducibility in a way that opens up for future automation and general use. Our results are in good agreement with results obtained by traditionally used methods for plasmid characterization.

Acknowledgement

This project was funded by the Chalmers Area of Advance in Nanoscience and Nanotechnology, the EuroNanoMedII-project NanoDiaBac and Torsten Söderbergs Stiftelse. LS

acknowledges funding from the Swedish Research Council in Health and Medicine.

Notes and references

^a Department of Biology and Biological Engineering, Chalmers University of Technology, SE-412 96, Gothenburg, Sweden. E-mail: fredrik.westerlund@chalmers.se

^b Department of Astronomy and Theoretical Physics, Lund University, Box 43, SE-221 00 Lund, Sweden

^c Department of Applied Physics, Chalmers University of Technology, SE-412 96, Gothenburg, Sweden.

^d Department of Clinical Microbiology, Sahlgrenska University Hospital and Department of Infectious Diseases, Institute of Biomedicine, Sahlgrenska Academy of the University of Gothenburg, Gothenburg, Sweden

^e Department of Medical Biochemistry and Microbiology, Uppsala University, Box 582, SE-751 23 Uppsala, Sweden.

Current address: Department of Systems Biology, Harvard Medical School, Boston, MA 02115, USA

† Electronic Supplementary Information (ESI) available: Experimental procedure, nanofabrication, data analysis and additional Figures. See DOI: 10.1039/c000000x/

- World Health Organization, *www.who.int*.
- L. S. Frost, R. Leplae, A. O. Summers, and A. Toussaint, *Nat Rev Micro*, 2005, **3**, 722–732.
- A. Carattoli, *International Journal of Medical Microbiology*, 2013, **303**, 298–304.
- B. M. Barton, G. P. Harding, and A. J. Zuccarelli, *Analytical Biochemistry*, 1995, **226**, 235–240.
- J. Shendure and H. Ji, *Nat Biotechnol*, 2008, **26**, 1135–1145.
- S. L. Levy and H. G. Craighead, *Chem. Soc. Rev.*, 2010, **39**, 1133–1152.
- F. Persson and J. O. Tegenfeldt, *Chem. Soc. Rev.*, 2010, **39**, 985.
- L. K. Nyberg, F. Persson, J. Berg, J. Bergström, E. Fransson, L. Olsson, M. Persson, A. Stålnacke, J. Wiggenius, J. O. Tegenfeldt, and F. Westerlund, *Biochemical and Biophysical Research Communications*, 2012, **417**, 404–408.
- A. N. Nilsson, G. Emilsson, L. K. Nyberg, C. Noble, L. S. Stadler, J. Fritzsche, E. R. B. Moore, J. O. Tegenfeldt, T. Ambjörnsson, and F. Westerlund, *Nucleic Acids Research*, 2014, **42**, e118.
- W. Reisner, N. B. Larsen, A. Silahtaroglu, A. Kristensen, N. Tommerup, J. O. Tegenfeldt, and H. Flyvbjerg, *Proceedings of the National Academy of Sciences*, 2010, **107**, 13294–13299.
- K. Jo, D. M. Dhingra, T. Odijk, J. J. de Pablo, M. D. Graham, R. Runnheim, D. Forrest, and D. C. Schwartz, *Proceedings of the National Academy of Sciences*, 2007, **104**, 2673–2678.
- E. T. Lam, A. Hastie, C. Lin, D. Ehrlich, S. K. Das, M. D. Austin, P. Deshpande, H. Cao, N. Nagarajan, M. Xiao, and P.-Y. Kwok, *Nat Biotechnol*, 2012, **30**, 771–776.
- C. Zhang, D. Guttula, F. Liu, P. P. Malar, S. Y. Ng, L. Dai, P. S. Doyle, J. A. van Kan, and J. R. C. van der Maarel, *Soft Matter*, 2013, **9**, 9593–9601.
- C. Zhang, K. Jiang, F. Liu, P. S. Doyle, J. A. van Kan, and J. R. C. van der Maarel, *Lab Chip*, 2013, **13**, 2821.
- K. Jiang, C. Zhang, D. Guttula, F. Liu, J. A. Van Kan, C. Lavelle, K. Kubiak, A. Malabirade, A. Lapp, V. Arluisson, and J. R. C. Van Der Maarel, *Nucleic Acids Research*, 2015.
- K. Frykholm, M. Alizadehheidari, J. Fritzsche, J. Wiggenius, M. Modesti, F. Persson, and F. Westerlund, *Small*, 2014, **10**, 884–887.
- D. E. Streng, S. F. Lim, J. Pan, A. Karpusenka, and R. Riehn, *Lab Chip*, 2009, **9**, 2772.
- J. O. Tegenfeldt, C. Prinz, H. Cao, S. Chou, W. W. Reisner, R. Riehn, Y. M. Wang, E. C. Cox, J. C. Sturm, P. Silberzan, and R. H. Austin, *Proceedings of the National Academy of Sciences of the United States of America*, 2004, **101**, 10979–10983.
- M. Alizadehheidari, E. Werner, C. Noble, M. Reiter-Schad, L. K. Nyberg, J. Fritzsche, B. Mehlig, J. O. Tegenfeldt, T. Ambjörnsson, F. Persson, and F. Westerlund, *Macromolecules*, 2015, **48**, 871–878.
- A. Brolund, O. Franzén, Ö. Melefors, K. Tegmark-Wisell, and L. Sandegren, *PLoS ONE*, 2013, **8**, e65793.
- M. A. Tycon, C. F. Dial, K. Faison, W. Melvin, and C. J. Fecko, *Analytical Biochemistry*, 2012, **426**, 13–21.
- L. Nyberg, F. Persson, B. Åkerman, and F. Westerlund, *Nucleic Acids Research*, 2013, **41**, e184–e184.
- L. Silver, M. Chandler, E. B. de la Tour, and L. Caro, *Journal of Bacteriology*, 1977, **131**, 929–942.
- C. Smillie, M. P. Garcillán-Barcia, M. V. Francia, E. P. Rocha, and F. de la Cruz, *Microbiology and Molecular Biology Reviews*, 2010, **74**, 434–452.
- H. Cao, A. R. Hastie, D. Cao, E. T. Lam, Y. Sun, H. Huang, X. Liu, L. Lin, W. Andrews, S. Chan, S. Huang, X. Tong, M. Requa, T. Anantharaman, A. Krogh, H. Yang, H. Cao, and X. Xu, *GigaScience*, 2014, **3**, 34.
- P. Utko, F. Persson, A. Kristensen, and N. B. Larsen, *Lab Chip*, 2011, **11**, 303.