

# Dalton Transactions

Accepted Manuscript



This is an *Accepted Manuscript*, which has been through the Royal Society of Chemistry peer review process and has been accepted for publication.

*Accepted Manuscripts* are published online shortly after acceptance, before technical editing, formatting and proof reading. Using this free service, authors can make their results available to the community, in citable form, before we publish the edited article. We will replace this *Accepted Manuscript* with the edited and formatted *Advance Article* as soon as it is available.

You can find more information about *Accepted Manuscripts* in the [Information for Authors](#).

Please note that technical editing may introduce minor changes to the text and/or graphics, which may alter content. The journal's standard [Terms & Conditions](#) and the [Ethical guidelines](#) still apply. In no event shall the Royal Society of Chemistry be held responsible for any errors or omissions in this *Accepted Manuscript* or any consequences arising from the use of any information it contains.



[www.rsc.org/dalton](http://www.rsc.org/dalton)



Journal Name

ARTICLE

## Heterocyclic dithiocarbamato-iron(III) complexes: single-source precursors for aerosol-assisted chemical vapour deposition (AACVD) of iron sulfide thin films

Received 00th January 20xx,  
Accepted 00th January 20xx

DOI: 10.1039/x0xx00000x

www.rsc.org/

Sixberth Mlowe,<sup>a</sup> David J. Lewis,<sup>b</sup> Mohammad Azad Malik,<sup>a,b</sup> James Raftery,<sup>b</sup> Egid B. Mubofu,<sup>c</sup> Paul O'Brien<sup>b</sup> and Neerish Revaprasadu<sup>\*a</sup>

*Tris*-(piperidinedithiocarbamato)iron(III) (1) and *tris*-(tetrahydroquinolinedithiocarbamato)iron(III) (2) complexes have been synthesized and their single-crystal X-ray structures determined. Thermogravimetric analysis (TGA) of the complexes showed decomposition to iron sulfide. Both complexes were then used as single-source precursors for the deposition of iron sulfide thin films by aerosol-assisted chemical vapour deposition (AACVD). Energy-dispersive X-ray (EDX) spectroscopy confirmed the formation of iron sulfide films. The addition of *tert*-butyl thiol almost doubled the sulfur content in the deposited films. Scanning electron microscopy (SEM) images of the iron sulfide films from both complexes showed flakes/leaves/sheets, spherical granules and nanofibre. The sizes and shapes of these crystallites depended on the nature of the precursor, temperature, solvent and amount of *tert*-butyl thiol used. The observed optical properties are dependent upon variation of reaction parameters such as temperature and solvent. Powder X-ray diffraction (p-XRD) studies revealed that pyrrhotite, hexagonal (Fe<sub>0.975</sub>S), marcasite and smythite (Fe<sub>3</sub>S<sub>4</sub>) phases were variedly deposited.

### Introduction

Iron sulfide, the most abundant transition metal chalcogenide in the earth's crust, it is potentially significant in several applications including: biomedical and catalytic processes,<sup>1,2</sup> hydrogen generation,<sup>3,4</sup> environmental remediation,<sup>5</sup> batteries and solar cells.<sup>6-8</sup> Potentially, it has a number of advantages over many other materials including: low toxicity and cost, vacancy-dependent crystalline structures which could be useful in bandgap tuning across quantum confinement regimes, as well as interesting magnetic and electric properties.<sup>9</sup> It exists in various forms including pyrite (cubic-FeS<sub>2</sub>), marcasite (orthorhombic-FeS<sub>2</sub>), pyrrhotite (Fe<sub>1-x</sub>S), greigite (cubic spinel-Fe<sub>3</sub>S<sub>4</sub>), smythite (Fe<sub>3</sub>S<sub>4</sub>),

troilite-2H (FeS) and mackinawite (Fe<sub>1+x</sub>S).<sup>10,11</sup> The phase diagram of iron-sulfur compounds is complex, and a small variation in stoichiometry often leads to drastic changes in the structural, magnetic, electronic and physical properties of the chalcogenide formed.<sup>9,12</sup>

Iron sulfide compounds exhibit a wide range of properties, from the semiconducting FeS<sub>2</sub> to ferromagnetic Fe<sub>3</sub>S<sub>4</sub>.<sup>13</sup> In contrast to the properties of their bulk counterparts, iron sulfide thin films and nanoparticles can exist in magnetic structures with enhanced surface contributions. Amongst the iron sulfide phases, cubic-FeS<sub>2</sub> (pyrite) has attracted most interest, in particular in the development of thin-film solar cells and solid-state batteries, owing to its properties which include strong light absorption ( $\sim 5 \times 10^5 \text{ cm}^{-1}$ ) and a direct band gap of 0.95 eV.<sup>14-17</sup>

Several studies on the deposition of iron sulfide thin films using single source precursors have been reported.<sup>18-20</sup> Aerosol-assisted chemical vapour deposition (AACVD) is a versatile route for the deposition of iron sulfide thin films. The morphology, particle size

<sup>a</sup> Department of Chemistry, University of Zululand, Private Bag X1001, KwaDlangezwa, 3886, South Africa. E-mail: RevaprasaduN@unizulu.ac.za

<sup>b</sup> Schools of Chemistry and Materials, The University of Manchester, Oxford Road, Manchester, M13 9PL, United Kingdom.

<sup>c</sup> Department of Chemistry, University of Dar es Salaam, P.O. Box 35061, Dar es Salaam, Tanzania.

Electronic Supplementary Information (ESI) available: [details of any supplementary information available should be included here]. See DOI: 10.1039/x0xx00000x

and crystal-structure of the films deposited by this route can be closely controlled by the choice of a suitable solvent, deposition temperature and the nature of the precursor. We have been using single source precursors for metal chalcogenides thin films or nanoparticles and recently used complexes such as dithiocarbamates,<sup>21-24</sup> thiosemicarbazone<sup>25</sup> and thiobiurets<sup>26</sup> for the preparation of Fe-S thin films by AACVD.

Herein we report the synthesis and X-ray crystal structures of new iron(III) dithiocarbamate complexes, *tris*-(piperidinedithiocarbamato)iron(III) (**1**) and *tris*-(tetrahydroquinolinedithiocarbamato)iron(III) (**2**). These complexes have been used as single-source precursors for the deposition of iron sulfide thin films by the AACVD. Powder X-ray diffraction, scanning electron microscopy and optical measurements reveal that the structural and electronic properties of the as-prepared nanostructured iron sulfide films are strongly dependent on the sample preparation conditions such as temperature and solvent effect. The effect of temperature and solvent also played an important role in controlling surface morphology and phase chemistry of the deposited films. Structural and morphological transformations in the deposited films were also observed as a result of the change in the chemical structure of the starting materials, allowing the fabrication of rare phases of iron sulfide that have not been accessed before by AACVD. The decomposition mechanism of complex (**1**) is also proposed, based upon thermal analysis, gas chromatography mass spectroscopy (GC MS) and powder X-ray diffraction studies.

## Experimental

### Materials

Piperidine 99 %, *tert*-butylthiol, toluene, hexane, chloroform and carbon disulfide 99.5 % were purchased from Sigma-Aldrich. Iron(III) chloride 99 % and tetrahydroisoquinoline 96 % were purchased from Merck chemicals. Chemicals were used without further purification.

### Characterization of precursors

The elemental analysis of C, H, N, S and Fe was carried out on a Carlo Erba EA 1108 elemental analyser which had been calibrated with standard reference materials. Fourier Transform Infrared

spectra were recorded in the range 200 – 4000 cm<sup>-1</sup> using a Bruker FT-IR Tensor 27 spectrophotometer. Thermogravimetric analysis was carried out at 10 °C min<sup>-1</sup> heating rate using a Perkin-Elmer Pyris 6 TGA from 30 to 700 °C in a closed perforated aluminium pan under N<sub>2</sub> gas. Spray gas chromatography mass spectroscopy (GC-MS) analyses were recorded on a Kratos concept 1S instrument.

Single crystal X-ray diffraction data for the compounds were collected using graphite monochromated Cu-K<sub>α</sub> radiation ( $\lambda = 1.54178 \text{ \AA}$ ) on a Bruker APEX diffractometer. The structure was solved by direct methods and refined by full-matrix least squares on  $F^2$ . All non-H-atoms were refined anisotropically. Hydrogen atoms were included in calculated positions, assigned isotropic thermal parameters and allowed to ride on their parent carbon atoms. All calculations were carried out using the SHELXTL software package.<sup>27</sup> The crystallographic refinement parameters are detailed as follows:

X-ray experimental and structural refinement data for C<sub>18</sub>H<sub>30</sub>FeN<sub>3</sub>S<sub>6</sub> (**1**) (Fig. 2). C<sub>18</sub>H<sub>30</sub>FeN<sub>3</sub>S<sub>6</sub>, M = 536.66, Monoclinic, space group C2/c, a = 13.0387(9), b = 11.8818(9), c = 15.9260(15) Å,  $\alpha$  (°) = 90,  $\beta$  (°) = 101.292(6),  $\gamma$  (°) = 90, volume = 2419.5(3) Å<sup>3</sup>, Z = 4, D = 1.473 Mg m<sup>-3</sup>, T = 100(2) K, reflections collected = 8309/2300, unique reflections = [R(int)=0.0695], final R indices [I > 2 $\sigma$ (I)]R1 = 0.0541, wR2 = 0.1176, R indices (all data) R1 = 0.0707, wR2 = 0.1336, largest diff. peak and hole = 0.707 and -0.935 eÅ<sup>-3</sup>, GOF = 1.068. CCDC reference number 984433.

X-ray experimental and structural refinement data for C<sub>30</sub>H<sub>30</sub>FeN<sub>3</sub>S<sub>6</sub> (**2**) (Fig. 3). C<sub>30</sub>H<sub>30</sub>FeN<sub>3</sub>S<sub>6</sub>, M = 680.78, Orthorhombic, space group Pca2(1), a = 21.9551(8), b = 18.8423(6), c = 14.7741(4) Å,  $\alpha$  (°) = 90,  $\beta$  (°) = 90,  $\gamma$  (°) = 90, volume = 6111.8(3) Å<sup>3</sup>, Z = 4, D = 1.480 Mg m<sup>-3</sup>, T = 100(2) K, reflections collected = 24173/8695, unique reflections = [R(int)=0.0991], final R indices [I > 2 $\sigma$ (I)]R1 = 0.0670, wR2 = 0.1576, R indices (all data) R1 = 0.1083, wR2 = 0.1784, largest diff. peak and hole = 1.034 and -0.614 eÅ<sup>-3</sup>, GOF = 1.027. CCDC reference number 1008838.

### Characterization of iron sulfide thin films

Powder XRD diffraction studies were performed on a Bruker AXS D8 diffractometer using Cu-K<sub>α</sub> radiation ( $\lambda = 1.54178 \text{ \AA}$ ) at 40 kV, 40

mA, room temperature. The samples were mounted flat and scanned between 20 to 70° in a step size of 0.05 with a count of 10 sec. Scanning electron microscopy (SEM) was carried out using a Philips XL30 FEG SEM. Energy-dispersive analysis of X-rays (EDX) spectroscopy was performed using a DX4 detector. All samples were carbon coated using Edwards coating system E306A prior to SEM analysis. Atomic force microscopy (AFM) analysis of the iron sulfide thin films was carried using a Bruker Multimode 8 instrument operating in Peakforce QNM mode. A Perkin Elmer Lambda 1050 UV-Vis NIR spectrometer was used to carry out the optical absorbance measurements of the iron sulfide thin films in the wavelength range 200 – 3000 nm.

### Synthesis and characterization of iron(III) heterocyclic dithiocarbamate complexes

Organic salts of sodium piperidine and/tetrahydroquinolinedithiocarbamate ligands were prepared according to procedures reported in literature<sup>28</sup> and were then converted to the corresponding iron(III) complexes by salt metathesis. A brief description of the synthesis of complexes is given below.

To an aqueous solution of FeCl<sub>3</sub> (0.82 g, 5.0 mmol) (25 mL), was added drop-wise an aqueous solution of the ligand, NaC<sub>10</sub>NS<sub>2</sub>H<sub>10</sub> (3.482 g, 15.0 mmol) dissolved in a minimal amount of water, with vigorous stirring. The reaction mixture was stirred for a further 1 h before being filtered. The black-coloured solids were washed with deionized water and dried under vacuum overnight. The compound was found to be soluble in solvents such as chloroform and dichloromethane and solubility in toluene is enhanced at elevated temperatures. The complexes were recrystallized from chloroform and hexane (1:1) by the diffusion method, to obtain crystals of complex (1) C<sub>18</sub>H<sub>30</sub>FeN<sub>3</sub>S<sub>6</sub>. Complex (2) C<sub>30</sub>H<sub>30</sub>FeN<sub>3</sub>S<sub>6</sub> was prepared in a similar manner.

Yield 79.7 %. Elemental analysis for C<sub>18</sub>H<sub>30</sub>FeN<sub>3</sub>S<sub>6</sub>: Calc: C, 40.28; H, 5.63; N, 7.83; S, 35.85; Fe, 10.41. Found: C, 40.32; H, 5.73; N, 7.94; S, 35.34; Fe, 9.55. IR (cm<sup>-1</sup>): 1422 (C=N), 965 (C=S), 365 (Fe-S).

Yield 62.4 %. Elemental analysis for C<sub>30</sub>H<sub>30</sub>FeN<sub>3</sub>S<sub>6</sub>: Calc: C, 52.93; H, 4.54; N, 6.17; S, 28.26; Fe, 8.20. Found: C, 53.19; H, 4.99; N, 6.42; S, 27.76; Fe, 7.81. IR (cm<sup>-1</sup>): 1440 (C=N), 978 (C=S), 383 (Fe-S).

### Deposition of iron sulfide thin films by AACVD

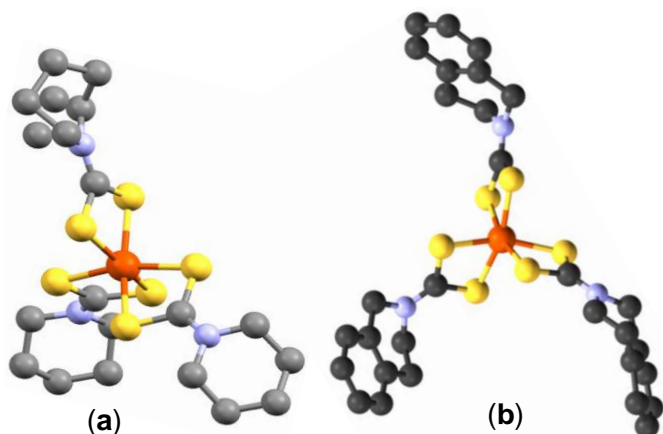
Iron sulfide thin films were deposited on glass substrates using AACVD and precursors (1) and (2); the AACVD assembly is similar to that described in literature.<sup>21</sup> The glass substrates were ultrasonically cleaned in distilled water and acetone and then, finally stored in ethanol, prior to use. In a typical deposition procedure, aerosols of the desired complex from its 46 mM solution (8 mL) (chloroform or toluene, as suitable solvents) are generated at room temperature using an ultrasonic humidifier operating at 50 Hz frequency. Argon was used as a carrier gas for the aerosols to be transported to the reactor chamber, at a flow rate of 160 mL min<sup>-1</sup>. Deposition experiments were conducted for 30 min and 2 hours for chloroform and toluene solutions, respectively. Table 1 provides a summary of results obtained from deposition of iron sulfide films using complex (1) and (2).

## Results and discussion

### Single source precursors

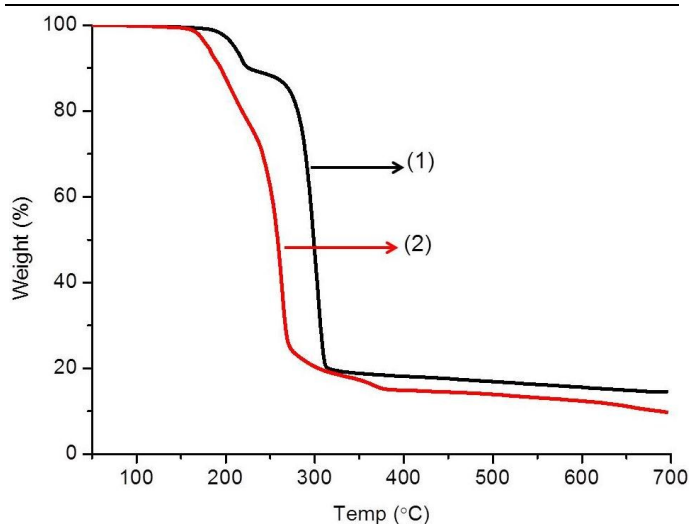
The single crystal X-ray structure of *tris*-(piperidinedithiocarbamato)iron(III) (1), is shown in Fig. 1(a). The X-ray structure has an octahedral iron cation coordinated by six sulfur atoms from the three bidentate piperidinedithiocarbamate ligands. The bond distances of Fe-S range from 2.2920 to 2.3067 Å. Structural refinement data are given in the experimental; selected bond angles and lengths are presented in the caption to Fig. 3(a).

The single crystal X-ray structure of *tris*-(tetrahydroisoquinolinedithiocarbamato)iron(III) (2) is shown in Fig. 1(b). The structure also shows a distorted octahedral environment with the Fe-S distances between 2.293 to 2.316 Å, longer than those of complex (1). The Fe-S bond lengths from both complex (1) and (2) are closer to those observed in our previous work.<sup>29</sup> The bite angles 75.20°, 75.78° and 75.86° of S1-Fe1-S2, S3-Fe1-S4 and S5-Fe1-S6, respectively further reveals the distorted octahedral geometry on iron(III). Structural refinement data are given in the experimental section; selected bond angles and lengths are presented in the caption to Fig. 1(b).



**Fig. 1(a)** The X-ray single crystal structure of  $C_{18}H_{30}FeN_3S_6$  (CCDC 984433) (Red = Fe, Yellow = S, Blue = N and Black = C). Selected bond lengths (Å) and bond angles ( $^\circ$ ): Fe(1)-S(1) 2.2920 (13), Fe(1)-S(1) #1 2.2920 (13), Fe(1)-S(3) #1 2.3003 (13), Fe(1)-S(3) 2.3003 (13), Fe(1)-S(2) 2.3067 (13), Fe(1)-S(2) #1 2.3067 (13), S(1)-Fe(1)-S(1) #1 99.40 (7), S(1)-Fe(1)-S(3) #1 93.87 (4), S(1) #1-Fe(1)-S(3) #1 162.84 (5), S(1)-Fe(1)-S(3) 162.84 (5), S(1) #1-Fe(1)-S(3) 93.88 (4), S(3) #1-Fe(1)-S(3) 75.46 (6), S(1)-Fe(1)-S(2) 75.81 (5), S(1) #1-Fe(1)-S(2) 94.62 (5), S(3) #1-Fe(1)-S(2) 99.17 (5), S(3)-Fe(1)-S(2) 92.41 (5), S(1)-Fe(1)-S(2) #1 94.62 (5), S(1) #1-Fe(1)-S(2) #1 75.81 (5), S(3) #1-Fe(1)-S(2) #1 92.41 (5), S(3)-Fe(1)-S(2) #1 99.17 (5), S(2)-Fe(1)-S(2) #1 165.37 (8). **(b)** The X-ray single crystal structure of  $C_{30}H_{30}FeN_3S_6$  (CCDC 1008838) (Red = Fe, Yellow = S, Blue = N and Black = C). Selected bond lengths (Å) and bond angles ( $^\circ$ ): Fe(1)-S(6) 2.293 (3), Fe(1)-S(2) 2.299 (3), Fe(1)-S(3) 2.307 (3), Fe(1)-S(5) 2.308 (3), Fe(1)-S(4) 2.309 (3), Fe(1)-S(1) 2.316 (3), S(6)-Fe(1)-S(2) 95.56 (11), S(6)-Fe(1)-S(3) 163.17 (12), S(2)-Fe(1)-S(3) 96.38 (11), S(6)-Fe(1)-S(5) 75.86 (10), S(2)-Fe(1)-S(5) 163.44 (12), S(3)-Fe(1)-S(5) 95.21 (11), S(6)-Fe(1)-S(4) 91.27 (11), S(2)-Fe(1)-S(4) 95.70 (11), S(3)-Fe(1)-S(4) 75.78 (10), S(5)-Fe(1)-S(4) 98.59 (10), S(6)-Fe(1)-S(1) 99.53 (11), S(2)-Fe(1)-S(1) 75.20 (10), S(3)-Fe(1)-S(1) 94.97 (11), S(5)-Fe(1)-S(1) 92.06 (10), S(4)-Fe(1)-S(1) 166.42 (12).

Thermogravimetric analysis (TGA) of complex **(1)** showed a two step decomposition pattern with a rapid weight loss of 15.6 % and 65.5 % at 210 °C and 304 °C, respectively (Fig. 2a). The weight of the remaining residue is 15.7 %, which corresponds to FeS (calculated percentage 16.4 %). The thermogram of complex **(2)** shows an ill-defined three-step decomposition pattern with weight loss of 28.0 %, 44.3 % and 7.1 % at 207 °C, 257 °C and 351 °C, respectively; the final weight of 11.8 % (calculated 12.9 %) is assumed to be a residue of iron sulfide material, which is sulfur deficient (Fig. 2b). The thermogram of complex **(2)** seems to continue changing on approaching 700 °C, possibly due to residual carbonaceous species in the films, or sublimation of the iron sulfide product, perhaps leading to sulfur deficient phases. Another possibility is that oxide phases form; Fe is very oxophilic and the nitrogen in the TGA is probably not that dry or oxygen free.

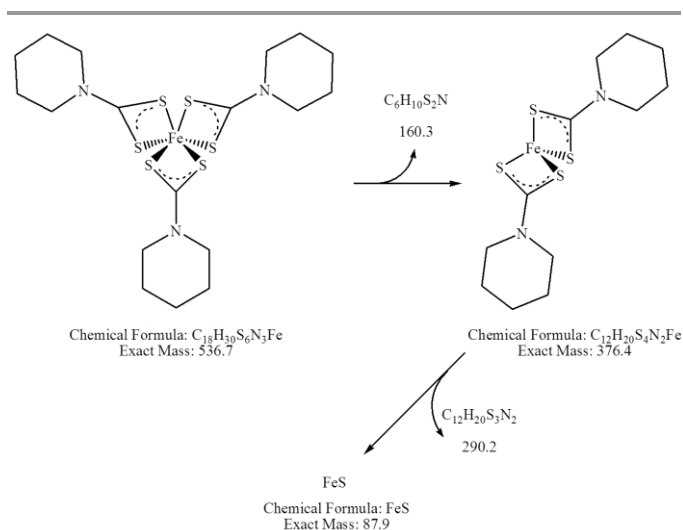


**Fig. 2** Thermogravimetric analysis (TGA) of complexes **(1)** and **(2)** at a heating rate of 10 °C min<sup>-1</sup> under nitrogen with a flow rate of 10 cm<sup>3</sup> min<sup>-1</sup>.

The decomposition mechanism of complex **(1)** was investigated using thermogravimetric analysis (TGA), gas chromatography mass spectroscopy (GC/MS) and powder X-ray diffraction (p-XRD). Thermal studies show that the decomposition of the complex **(1)** proceeds through two major steps: (i) detachment of one of the three dithiocarbamate ligands in the six coordinated *tris*-(piperidinedithiocarbamato)iron(III) complex, thus forming an intermediate four coordinated complex, and lastly (ii) final decomposition/elimination (304 °C) of the four coordinated dithiocarbamate complex of iron to afford materials of either FeS or indefinite Fe-S composition (Fig. 3). The first weight loss of 15.6 % is smaller than the weight of the anticipated release of only one piperidine dithiocarbamate ligand (~29 %). Thus, the first step may involve partial decomposition, rearrangement of the complex and/or reduction to Fe(II) complex. The GC mass spectrum of complex **(1)** also confirmed complete decomposition of the complex via two steps (ESI Fig. 1): (i) elimination of one piperidinyldithiocarbamate ligand ( $m/z$  160), followed by (ii) complete removal of the remaining organic components ( $m/z$  290) thus affording FeS as the final product ( $m/z$  86).

**Table 1.** Summary of iron sulfide thin films obtained from complex (1) and (2) under different reaction conditions.

Precursor	Reaction conditions	Morphology	Phase
Complex (1)	Toluene, 350-450 °C, 2 hrs	Leaf, flake, sheet	Hexagonal (Fe <sub>0.975</sub> S), marcasite (FeS <sub>2</sub> )
	Chloroform, 350-450 °C, 30 minutes	Fiber	Hexagonal (Fe <sub>0.975</sub> S), smythite (Fe <sub>3</sub> S <sub>4</sub> )
	<i>Tert</i> -butyl thiol, 450 °C, 2 hrs	Flower, spherical-globular	Greigite (Fe <sub>3</sub> S <sub>4</sub> )
Complex (2)	Toluene, 350-450 °C, 2 hrs	Leaf, flake, Sheet	Pyrrhotite (Fe <sub>0.95</sub> S <sub>1.05</sub> ), hexagonal (Fe <sub>0.975</sub> S)
	Chloroform, 350-450 °C, 30 minutes	Fiber	Hexagonal (Fe <sub>0.975</sub> S)
	<i>Tert</i> -butyl thiol, 450 °C, 2 hrs	Spherical and flake	Greigite (Fe <sub>3</sub> S <sub>4</sub> )

**Fig. 3** Proposed decomposition mechanism of complex (1) C<sub>18</sub>H<sub>30</sub>FeN<sub>3</sub>S<sub>6</sub>.

A separate study which aimed at identifying the existence of temperature-dependent phase transformation in the iron sulfide materials was carried out. The progress of this experiment was monitored using powder X-ray diffractometry. Diffraction studies (ESI Fig. 2) were carried out at a heating rate of 2.5 °C h<sup>-1</sup>, where complex (1) was the starting material heated from 180 °C to 310 °C under N<sub>2</sub> flow. A total of 27 diffraction patterns were collected. Hexagonal phase (card number 01-080-1032) of iron sulfide and mackinawite (card number 04-003-6935) became prominent with an increase in temperature, with few peaks unassigned. The observed temperatures for the occurrence of Fe-S phases are lower than those established from phase diagrams, probably due to the prolonged time of the diffraction analysis and heating.

### Deposition of iron sulfide thin films using toluene solution

Thin films of iron sulfide were deposited on glass substrates by AACVD at three different temperatures: 350, 400 and 450 °C using either chloroform or toluene (sonicated at 70 °C) as solvents. The films produced were characterized by scanning electron microscopy (SEM), energy dispersive X-ray (EDX) spectroscopy, powder X-ray diffraction (p-XRD), optical absorbance spectroscopy and atomic force microscopy (AFM).

The SEM images of iron sulfide films in Fig. 4 deposited using complex (1) in toluene solvent, show the growth of sheet-like structures at 350 °C and nano-leaf/flake like crystallites at 400 °C and 450 °C. The films size increased with an increase in deposition temperature; an increase in film size of 0.6 - 1.0 μm was observed when the temperature was increased to 400 °C and 450 °C. Some microstructures on the surfaces were also observed. The morphology obtained from this study is reasonably similar to that of our recently reported iron sulfide thin films deposited using iron thiobiuret and diethyldithiocarbamate complexes.<sup>21,27</sup> EDX spectroscopy on five different areas of the films showed that the compositions are slightly sulfur deficient, a trend that increased at elevated temperature (Table 2).

A similar trend was observed when complex (2) was used as single source precursor to deposit a pyrrhotite film (Fig. 5a and b). The images illustrate formation of typical nanosheet-like structures. A slight morphological transformation is observed, as a result of the change in the chemical structure of the starting materials.

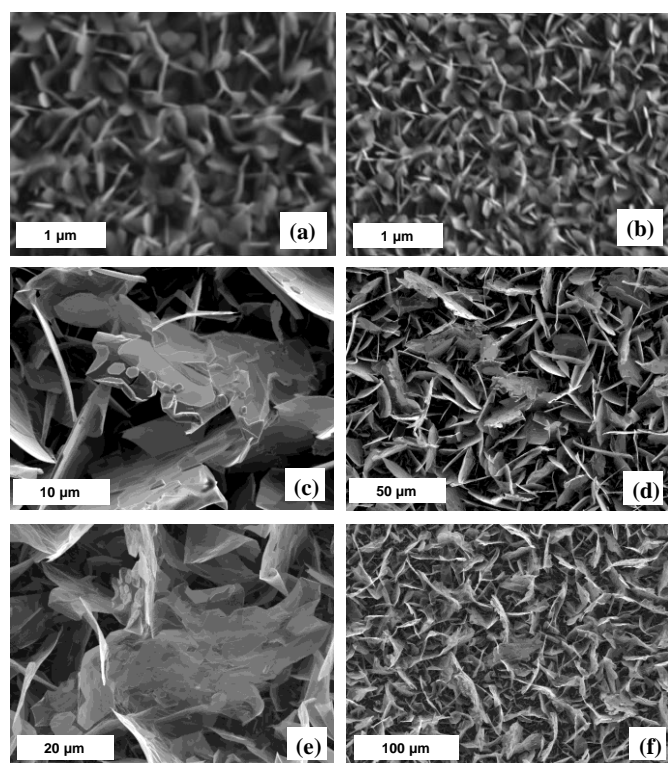


Fig. 4 Representative secondary electron SEM images of the iron sulfide thin films deposited at (a and b) 350 °C, 400 °C (c and d) and (e and f) 450 °C using complex (1).

Table 2. Elemental composition found by EDX spectroscopy of Fe and S in the thin films deposited using complex (1).

Temp (°C)	Fe (%)	S (%)	Ratio (Fe:S)
350	57.3	42.7	Fe <sub>(1+x)</sub> S, x=0.3
400	60.8	39.2	Fe <sub>(1+x)</sub> S, x=0.5
450	66.3	33.7	Fe <sub>2</sub> S

The back-scattered electron (BSE) SEM image (which provide Z contrast) of iron sulfide films, show small particles with bright contrast embedded into flakes of darker contrast. Point scanning EDX spectroscopy revealed that the white spots (chunks) were S-rich (Fe 53.7 % and S 46.3 %), while the opposite is observed for the black spots (flakes) which are Fe-rich (Fe 66.9 % and S 33.1 %) (Fig. 5c). This phenomenon validates that Fe and S atoms in an iron sulfide thin film are unevenly distributed on a substrate, strongly suggestive of the formation of an overall S-deficient film. The darkness of the iron rich area suggests that there is a lighter element such as carbon in this area of the film that tends to darken the contrast compared to the small crystallites observed which appear white.

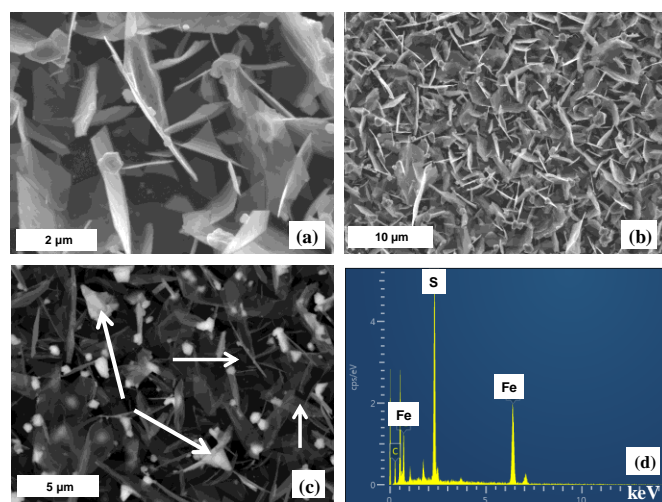
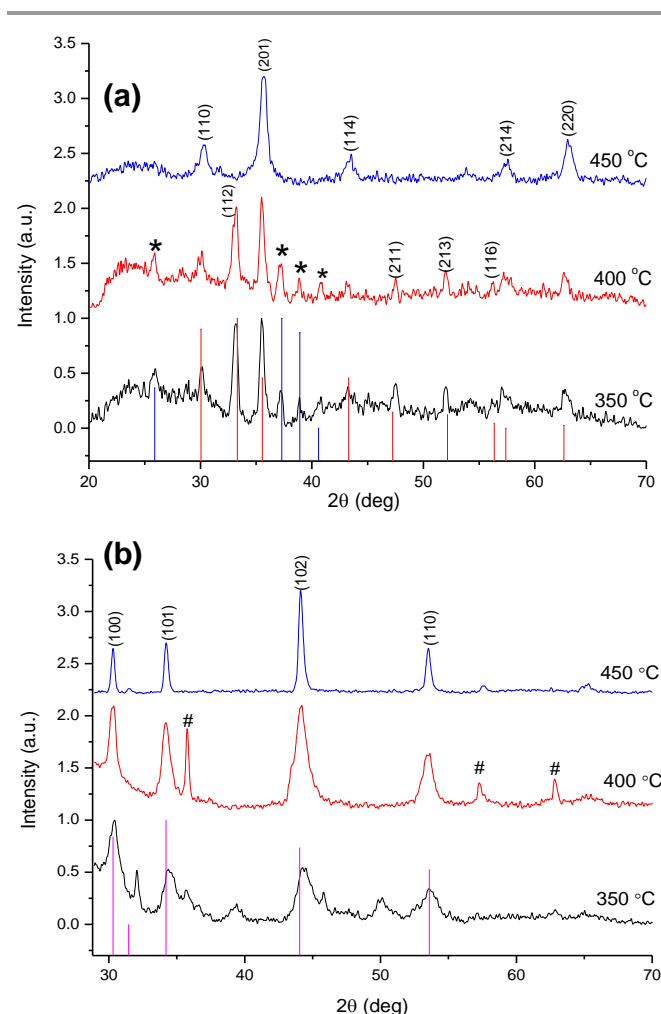


Fig. 5 Representative secondary electron SEM images of the iron sulfide thin films deposited at (a and b) 450 °C and backscattered electron SEM image (c) and a representative EDX spectrum (d) when complex (2) was used.

The *p*-XRD patterns of the as-deposited films from complex (1) show hexagonal-phase iron sulfide (Fe<sub>0.975</sub>S) (card number: 01-080-1032), dominating at the higher temperature of 450 °C (Fig. 6(a)). The reflection (*hkl*) planes of (110), (201) (114) (214) and (220) corresponding to the Fe<sub>0.975</sub>S phase were observed at 450 °C. At the deposition temperatures of 350 °C and 400 °C, the XRD patterns showed mixed phases of marcasite (FeS<sub>2</sub>) and iron sulfide (Fe<sub>0.975</sub>S) phases. The reflections at 25.97°, 37.38°, 38.89° and 40.59° were indexed to the (110), (111), (120) and (200) planes of marcasite FeS<sub>2</sub> (card number: 03-065-2567). Mixed phases of marcasite (FeS<sub>2</sub>) and hexagonal iron sulfide (Fe<sub>0.975</sub>S) coexist at 350 °C and 400 °C, while the latter are predominantly obtained in its pure phase at 450 °C. The transformation of iron sulfide compounds into different phases is possible under certain conditions such as high temperature or pressure.<sup>30-32</sup>

A comparison *p*-XRD pattern for the iron sulfide film deposited from complex (2) by AACVD at 350, 400 and 450 °C is presented in Fig. 6(b). A pure hexagonal-pyrrhotite 1T (Fe<sub>0.95</sub>S<sub>1.05</sub>) phase is formed at 450 °C (card number: 01-075-0600), while at 350 and 400 °C some additional peaks are observed (denoted by a symbol #) which matched a hexagonal iron sulfide phase (Fe<sub>0.975</sub>S) (card number 01-080-1032). These results suggest that the mechanism at which the complexes decompose are different. Intergrowth involving different pyrrhotite types are known,<sup>33-35</sup> and the degree of such intergrowths (micron to submicron) makes analysis difficult and therefore information on accurate Fe:S ratios and

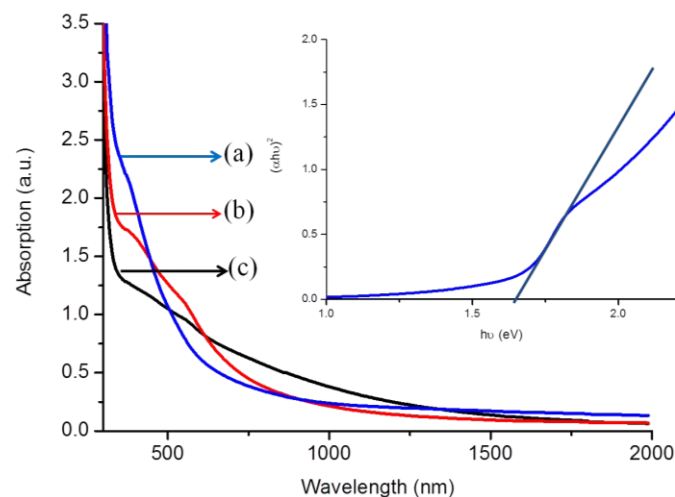
concentration of impurity are relatively incomplete for the pyrrhotite in this study. These results are similar to our recent reports,<sup>21,22</sup> where formation of pyrrhotite phase were observed at 400 and 450 °C when alkylldithiocarbamateiron(III) complexes were used as single source precursors to deposit films by AACVD.



**Fig. 6(a).** Powder XRD of iron sulfide ( $\text{Fe}_{0.975}\text{S}$ , red sticks) thin films deposited from toluene solutions of complex (1) at various temperatures. The asterisk symbol (\*) denotes the marcasite phase ( $\text{FeS}_2$  represented by blue sticks). **(b).** Powder XRD of Fe-S thin films deposited from toluene solution of complex (2). (Purple sticks represent standard pattern for hexagonal-pyrrhotite 1T ( $\text{Fe}_{0.95}\text{S}_{1.05}$ ) phase) The symbol # denotes the iron sulfide ( $\text{Fe}_{0.975}\text{S}$ ) phase (card number: 01-080-1032).

The UV-vis NIR absorption spectrum of the iron sulfide thin film deposited at 350, 400 and 450 °C is shown in Fig. 7. The as-deposited iron sulfide thin films absorb light in the visible and near-infrared spectral regions. Deposition from complex (1) at 350 °C displays a sharp absorption band gap of 1.63 eV, estimated from Tauc plots (Inset Fig. 7).<sup>36</sup> The films deposited at 400 and 450 °C exhibited red shifted absorption properties (~1.25 – 1.34 eV) compared to that of 350 °C. The large blue shift observed for the absorption spectra, may reveal the formation of surface defects

free<sup>37</sup> and hence high optical performance activeness of the films in the visible and infrared region. The optical behaviour of the deposited films reveals that the absorption properties are temperature, size and structure dependent.



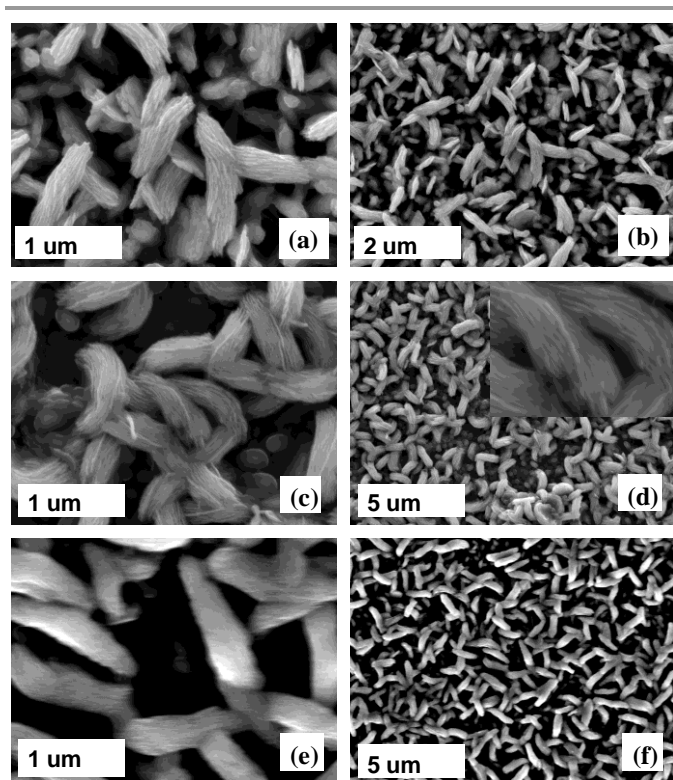
**Fig. 7** UV-Vis-NIR absorption spectra of Fe-S thin films deposited at (a) 350 (b) 400 and (c) 450 °C from toluene solution of complex (1). Inset: A representative Tauc plot showing the estimated direct optical band gap of Fe-S film deposited at 350 °C.

#### Deposition of iron sulfide thin films from solution in chloroform

The role of a solvent in the formation of thin films by AACVD can be significant and has been described on the physical basis of the enthalpy heat of combustion and vaporization, nature of bonding between precursor and solvent molecules in aerosol droplets as well as the coordinating ability of the solvent, which in one way or another may influence the nucleation by changing the enthalpy of the system.<sup>38,39</sup> Chloroform has lower heat of combustion and vaporization (473.2 and 31.4 kJ mol<sup>-1</sup>, respectively), thus evaporates faster, causing homogeneous nucleation. On the other hand, the higher heat of combustion and vaporization (3910.3 and 38.06 kJ mol<sup>-1</sup>, respectively) of toluene facilitates both homogeneous and heterogeneous nucleation growth of the particles. Indeed, the iron sulfide films deposited from chloroform aerosols were observed to be significantly different from those deposited from the toluene aerosols. The representative SEM images of iron sulfide thin films deposited at various temperatures are shown in Fig. 8. Irregular, bundles of nanofibers structures are observed when complex (1) was deposited at 350 °C with particle sizes ranging between 400 – 450 nm. No significant morphological changes were observed when the temperature was increased (Fig. 8 (c) and (d)). However, a considerable increase in particle sizes to 530 – 580 nm and 600 –

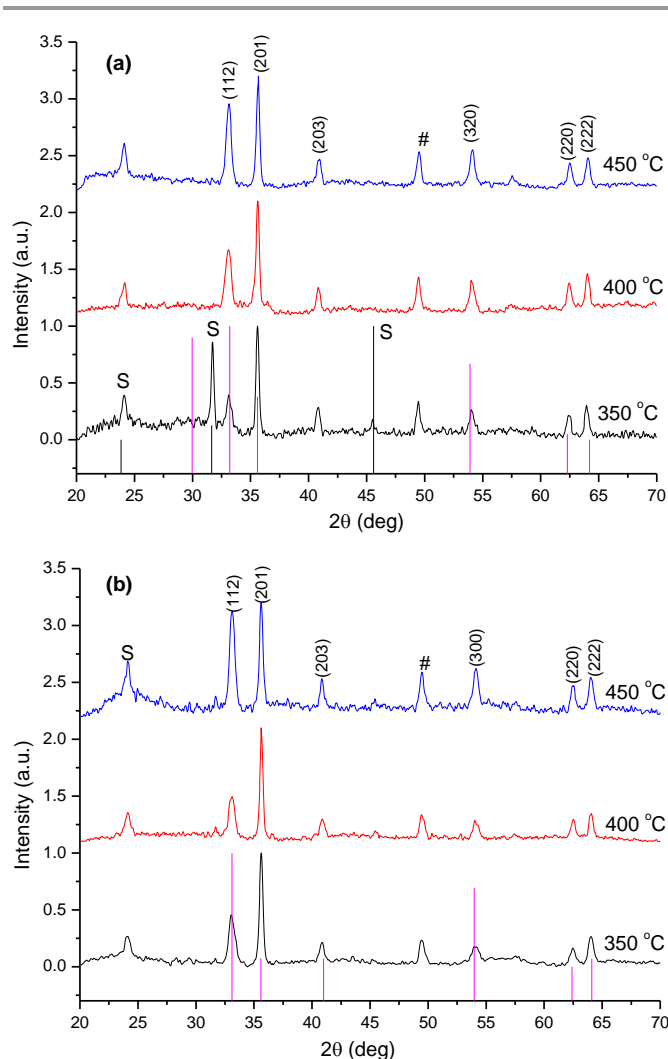


650 nm are observed at 400 and 450 °C, respectively. A similar morphological trend was observed for complex (2); Fig. 8 (e and f) showing a representative bundle of nanofiber-like structures obtained at 450 °C with sizes between 525 – 575 nm.



**Fig. 8** Representative secondary electron SEM images of the iron sulfide thin films deposited at (a and b) 350 °C and 450 °C (c and d) for complex (1) and (e and f) 450 °C using complex (2) using chloroform solvent. Inset: a zoomed in high magnification image showing more structural features of the bundle of fibrous.

The *p*-XRD patterns of iron sulfide films grown from chloroform solutions of complex (1) at all temperatures (Fig. 9(a)) showed (112), (201), (203), (320), (220) and (222) reflections which correspond to hexagonal-phase iron sulfide ( $\text{Fe}_{0.975}\text{S}$ ) (card number: 01-080-1032). Some minor peaks can be attributed to smyhtite phase ( $\text{Fe}_3\text{S}_4$ ) (Card number 04-007-2189) are observed at 350 °C, while a pure hexagonal phase is observed at temperatures 400 °C and 450 °C. Furthermore, the intensity of the (112) reflection increases as a function of temperature. The growth of a hexagonal phase-iron sulfide ( $\text{Fe}_{0.975}\text{S}$ ) from complex (2) dominates at all deposition temperatures (Fig. 9(b)). UV-Vis-NIR absorbance spectroscopy of a representative sample (350 °C for complex (1)) showed a broad absorption with the absorption maxima at around 1300 nm (0.95 eV) at 350 °C (ESI Fig. 3), bathochromically shifted compared with films produced using toluene solvent. These results reveal that the solvent plays an important role in the reaction pathway.



**Fig. 9(a)**. Powder XRD of Fe-S thin films deposited from complex (1) using chloroform as the solvent. (Purple and black sticks represent standard card for hexagonal phase ( $\text{Fe}_{0.975}\text{S}$ ) and , smyhtite ( $\text{S} = \text{Fe}_3\text{S}_4$ ) and # = Mackinawite ( $\text{FeS}$ )). **(b)**. Powder XRD of Fe-S thin films deposited from complex (2) using chloroform as the solvent. (Purple sticks represent standard pattern for hexagonal phase ( $\text{Fe}_{0.975}\text{S}$ ), S = smyhtite ( $\text{Fe}_3\text{S}_4$ ) and # = Mackinawite ( $\text{FeS}$ )).

### Effect of *tert*-butyl thiol (*t*-BuSH)

The composition and structure of Fe-S films have been described in terms of  $\text{Fe}_x\text{S}_y$  phases which are mainly temperature-dependent.<sup>30,31</sup> There exist six sulfur atoms for each iron atom in compounds (1) and (2), seemingly sufficient to produce sulfur-rich phases such as pyrite. It is also known that higher temperature syntheses result in the formation of sulfur-deficient films. Therefore, an attempt was carried out to increase the sulfur content during the deposition experiments. A series of AACVD experiments were carried out by adding 1 mL (8.87 mmol) of *tert*-butyl thiol (*t*-BuSH). In this regard, toluene solutions of both complexes were used and depositions were conducted at 350, 400 and 450 °C. High quality representative results for the deposition temperature of 450 °C are described.

Addition of *t*-BuSH to the precursor mix had a strong influence on the morphologies of the deposited iron sulfide films. SEM images (Fig. 10 a & b) of iron sulfide films deposited using complex (1) at 450 °C, showed formation of flower-like bundles of spherical-to-globular shaped crystallites with particle sizes ranging from 500 to 600 nm. Complex (2) deposited double-layered films: the bottom one a relatively compact layer is composed of spherical shaped particles (~500 nm), and a loose top layer is composed of mainly flake shaped crystallites (900 nm) (Fig. 10c & d). A significant increase in the sulfur content (S 53.8 % and Fe 46.2 %) was observed as a result of using *t*-BuSH. The p-XRD patterns of deposited iron sulfide samples reveals two sharp reflections at 32° and 45.8° which we could not assign (ESI Fig. S4).

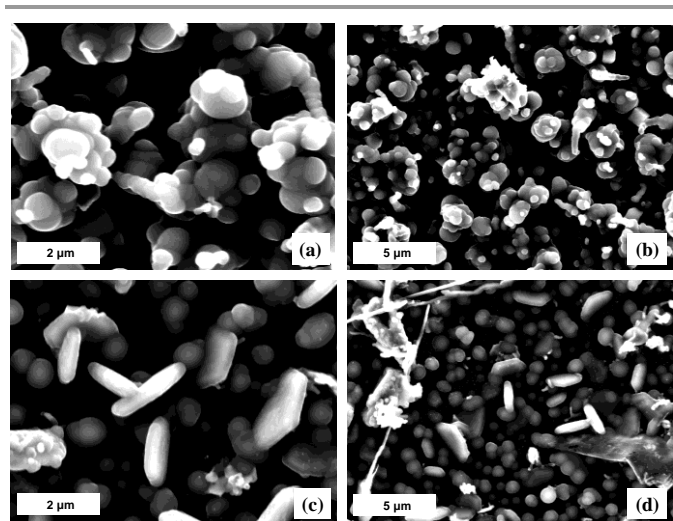


Fig. 10 SEM images of the iron sulfide thin films deposited at 450 °C using (a and b) complex (1) and (c and d) complex (2).

Topological analysis of the films was performed using atomic force microscopy (AFM), and revealed the formation of uniform films (ESI Fig. S5). The room temperature UV-Vis NIR absorption spectra in ESI (Fig. S6) of iron sulfide thin film deposited using complex (1) and (2) both showed absorption edge approx. 1.7 – 2.0 eV, a hypsochromic shift as compared with reported values of iron sulfide.<sup>40,41</sup> This blue shift phenomenon confirms the enrichment of the Fe-S film by sulfur, as a result of *t*-BuSH addition. It has been reported that sulfur vacancies and impurities are potentially responsible in lowering the band gap of iron sulfide particles.<sup>37,42</sup> Additionally, bulk sulfur vacancies are also responsible for nonconstant charge distribution resulting in poor optical properties and photo conversion efficiency.

## Conclusions

We have successfully synthesized *tris*-(piperidinedithiocarbamato)iron(III) (1) and *tris*-(tetrahydroquinolinedithiocarbamato)iron(III) (2) complexes and determined their X-ray crystal structures. Both complexes have been used as single source precursors for the deposition of iron sulfide thin films on glass substrates by aerosol assisted chemical vapor deposition technique. Thermogravimetric and powder X-ray diffraction studies revealed the formation of iron sulfide(s). A mechanism for the decomposition of complex (1) was studied using thermogravimetric analysis, X-ray diffraction and gas chromatography mass spectroscopy. The mechanism showed that the decomposition of complex (1) proceeds through two steps; firstly detachment of one piperidiny dithiocarbamate ligand, followed by complete removal of the remaining organic moiety. Different deposition parameters such as temperature and solvent were used and correlated with the morphological, structural and optical properties of the resultant deposited films. The morphology of the iron sulfide films has been found to be strongly dependent on the solvent and the amount of *tert*-butyl thiol added to the precursor mixture. X-ray diffraction studies revealed the formation of mixed phase and/or pure phase iron sulfide films, an effect which was found to be temperature dependent. Toluene and chloroform precursor solutions mainly formed pyrrhotite and hexagonal phases of iron sulfide thin films at elevated temperatures. Optical measurements revealed the formation of blue shifted (0.95 – 2.0 eV) Fe-S films which were solely influenced by the structure and morphologies. The experimental conditions that we used allowed us to access iron sulfide in new ways by AACVD using dithiocarbamate precursors.

## Acknowledgements

The authors are grateful to the National Research Foundation (NRF), South Africa, Royal Society Leverhulme Africa Award and Royal Society DFID Africa Capacity Building Initiative for financial support. The author also acknowledges the University of Zululand Research Office for financial support and the POB group of the University of Manchester for facilitating this research.

## Notes and references

- 1 P. A. Janick and L. M. Siegel, *Biochem.*, 1982, **21**, 3538.
- 2 W. O. Gillum, L. E. Mortenson, J. S. Chen and R. H. Holm, *J. Am. Chem. Soc.*, 1977, **99**, 584.
- 3 C. Di Giovanni, W.-A. Wang, S. Nowak, J.-M. Grenèche, H. Lecoq, L. Mouton, M. Giraud and C. Tard, *ACS Catal.*, 2014, **4**, 681.
- 4 D. Kong, J. J. Cha, H. Wang, H. R. Lee and Y. Cui, *Energy Environ. Sci.*, 2013, **6**, 3553.
- 5 E.-J. Kim, J.-H. Kim, A.-M. Azad and Y.-S. Chang, *ACS Appl. Mater. Interfaces*, 2011, **3**, 1457.
- 6 G. L. Henriksen and D. R. Vissers, *J. Power Sources*, 1994, **51**, 115.
- 7 H. Geng, L. Zhu, W. Li, H. Liu, L. Quan, F. Xi and X. Su, *J. Power Sources*, 2015, **281**, 204.
- 8 H. Chen, L. Zhu, H. Liu and W. Li, *J. Power Sources*, 2014, **245**, 406.
- 9 H. Wang and I. Salveson, *Phase Transform*, 2005, **78**, 547.
- 10 S. A. Kissin and S. D. Scott, *Econ. Geol.*, 1982, **77**, 1739.
- 11 D. J. Vaughan and J. R. Craig, (1978) *Minerals Chemistry of Metal Sulfides*. Cambridge University Press. Cambridge.
- 12 X. F. Qian, X. M. Zhang, C. Wang, Y. Xie, W. Z. Wang and Y. T. Qian, *Mater. Sci. Eng.*, 1999, **B64**, 170.
- 13 D. Hobbs and J. Hafner, *J. Phys: Condens Matter*, 1999, **11**, 8197.
- 14 S. Shukla, N. H. Loc, P. P. Boix, T. M. Koh, R. R. Prabhakar, H. K. Mulmudi, J. Zhang, S. Chen, C. Fan Ng, C. H. A. Huan, N. Mathews, T. Sritharan and Q. Xiong, *ACS Nano*, 2014, **8**, 10597.
- 15 J. Xia, J. Jiao, B. Dai, W. Qiu, S. He, W. Qiu, P. Shen and L. Chen, *RSC Adv.*, 2013, **3**, 6132.
- 16 L. Li, M. Cabán-Acevedo, S. N. Girard and S. Jin, *Nanoscale*, 2014, **6**, 2112.
- 17 D. Liang, M. Cabán-Acevedo, N. S. Kaiser and S. Jin, *Nano Lett.*, 2014, **14**, 6754.
- 18 R. Morrish, R. Silverstein and C. A. Wolden, *J. Am. Chem. Soc.*, 2012, **134**, 17854.
- 19 V. G. Bessergenev, R. J. F. Pereira and A. M. B. do Rego, *Surf. Coat. Technol.*, 2007, **201**, 9141.
- 20 M. J. Almond, H. Redman and D. A. Rice, *J. Mater. Chem.*, 2000, **10**, 2842.
- 21 M. Akhtar, A. L. Abdelhady, M. A. Malik and P. O'Brien, *J. Cryst. Growth*, 2012, **346**, 106.
- 22 S. Khalid, E. Ahmed, M. A. Malik, D. J. Lewis, S. A. Bakar, Y. Khan and P. O'Brien, *New J. Chem.*, 2015, **39**, 1013.
- 23 S. Saeed, R. Hussain and R. J. Butcher, *J. Coord. Chem.*, 2014, **67**, 1693.
- 24 P. O'Brien, D. J. Otway and J.-H. Park, *Mat. Res. Soc. Symp. Proc.*, 2000, **606**, 133.
- 25 S. D. Disale and S. S. Garje, *Appl. Organometal. Chem.*, 2010, **24**, 734.
- 26 K. Ramasamy, M. A. Malik, M. Helliwell, F. Tuna and P. O'Brien, *Inorg. Chem.*, 2010, **49**, 8495.
- 27 G. M. Sheldrick, A short history of SHELX, *Acta Crystallographica, Section A, Foundations of Crystallography*, International Union of Crystallography, 2008, **64**, 112.
- 28 L. D. Nyamen, V. S. R. Pullabhotla, A. A. Nejo, P. Ndifon and N. Revaprasadu, *New J. Chem.*, 2011, **35**, 1133.
- 29 M. Akhtar, J. Akhter, M. A. Malik, P. O'Brien, F. Tuna, J. Raftery and M. Helliwell, *J. Mater. Chem.*, 2011, **21**, 9737.
- 30 O. Kubaschewski, (1982) "Iron-Sulfur", *Iron-Binary Phase Diagrams*, Springer-Verlag, Berlin, 125.
- 31 D. J. Vaughan and A. R. Lennie, *Scientific Progress (Edinburgh)*, 1991, **75**, 371.
- 32 R. A. Berner, *Science*, 1962, **137**, 669.
- 33 C. A. Francis and J. R. Craig, *Amer. Mineral.*, 1976, **61**, 21.
- 34 D. F. Shriver, P. W. Atkins, T. L. Overton, J. P. Rourke, M. T. Weller and F. A. Armstrong, (2006) "Inorganic Chemistry" W. H. Freeman, New York, USA.
- 35 W. W. Barker and T. C. Parks, *Geochimica et Cosmochimica Acta*, 1986, **50**, 2185.
- 36 J. Tauc, (1966) *Optical Properties of Solids*. Academic Press, New York, USA.
- 37 M. Cabán-Acevedo, N. S. Kaiser, C. R. English, D. Ling, B. J. Thompson, H.-E. Chen, K. J. Czech, J. C. Wright, R. J. Hamers and S. Jin, *J. Am. Chem. Soc.*, 2014, **136**, 17163.
- 38 A. A. Tahir and K. G. U. Wijayantha, *J. Photochem. Photobiol. A-Chem.*, 2010, **216**, 119.
- 39 C. Piccirillo, R. Binions and I. P. Parkin, *Chem. Vap. Depos.*, 2007, **13**, 145.
- 40 J. P. Wilcoxon, P. P. Newcomer and G. A. Samara, *Solid State Commun.*, 1996, **98**, 581.
- 41 A. M. Karguppikar and A. G. Vedeshwar, *Phys. Status Solidi A*, 1988, 109, 549.
- 42 C. Wadia, Y. Wu, S. Gul, S.K. Volkman, J. Guo and A. P. Alivisatos, *Chem. Mater.*, 2009, **21**, 2568.

### Graphical abstract

A series of iron(III) heterocyclic dithiocarbamate complexes were synthesized, characterized and their crystal Structures elucidated. The complexes were used as single source precursors to deposit iron sulfide thin films by aerosol assisted chemical vapour deposition technique.

