

PCCP

Accepted Manuscript



This is an *Accepted Manuscript*, which has been through the Royal Society of Chemistry peer review process and has been accepted for publication.

Accepted Manuscripts are published online shortly after acceptance, before technical editing, formatting and proof reading. Using this free service, authors can make their results available to the community, in citable form, before we publish the edited article. We will replace this *Accepted Manuscript* with the edited and formatted *Advance Article* as soon as it is available.

You can find more information about *Accepted Manuscripts* in the [Information for Authors](#).

Please note that technical editing may introduce minor changes to the text and/or graphics, which may alter content. The journal's standard [Terms & Conditions](#) and the [Ethical guidelines](#) still apply. In no event shall the Royal Society of Chemistry be held responsible for any errors or omissions in this *Accepted Manuscript* or any consequences arising from the use of any information it contains.

The effect of hydrostatic pressure on model membrane domain composition and lateral compressibility

Cite this: DOI: 10.1039/x0xx00000x

Received 00th January 2012,
Accepted 00th January 2012

DOI: 10.1039/x0xx00000x

www.rsc.org/

H.M.G. Barriga*, R. V. Law, J. M. Seddon, O. Ces and N.J. Brooks*

Phase separation in ternary model membranes is known to occur over a range of temperatures and compositions and can be induced by increasing hydrostatic pressure. We have used small angle X-ray scattering (SAXS) to study phase separation along pre-determined tie lines in dioleoylphosphatidylcholine (DOPC), dipalmitoylphosphatidylcholine (DPPC) and cholesterol (CHOL) mixtures. We can unequivocally distinguish the liquid ordered (L_o) and liquid disordered (L_d) phases in diffraction patterns from biphasic mixtures and compare their lateral compressibility. The variation of tie line endpoints with increasing hydrostatic pressure was determined, at atmospheric pressure and up to 100 MPa. We find an extension and shift of the tie lines towards the DOPC rich region of the phase diagram at increased pressure, this behaviour differs slightly from that reported for decreasing temperature.

Introduction

Biological membranes are highly dynamic systems comprised of a broad range of lipids and proteins. Globally, the most abundant lipids in biological membranes are phospholipids,¹ however, cholesterol is also an extremely important component, with concentrations *in-vivo* thought to reach as high as 30-40 mol% in the plasma membrane.² A key aspect of the ability of biological membranes to self-regulate is their propensity for clustering and lateral organisation which is thought to facilitate a range of processes from membrane trafficking to cell signalling.^{3,4} Examples include immunoglobulin E signalling during the allergic immune response,⁵ T-cell antigen receptor signalling and increased local concentrations of ceramide being linked to cell apoptosis.^{6,7} There has been much debate on the origins, sizes and relative timescales of these different processes highlighting the complexities of biological membranes.^{8,9,10,11}

Model membranes provide a useful tool for understanding how small changes in physical parameters can alter the interactions within simple lipid systems and drive phase separation. This has been extensively studied in both bulk¹² and vesicular based lipid systems,^{13,14,15,16,17,18} which generally correspond well to each other. These model membranes are commonly ternary mixtures composed of cholesterol, a lipid with a high melting temperature (T_m) and a low T_m lipid, under suitable conditions such mixtures can phase separate into two

coexisting fluid phases – a liquid ordered phase (L_o) and a liquid disordered phase (L_d). The L_o phase is usually rich in cholesterol and the high T_m lipid, and exhibits increased conformational order in the hydrocarbon chain region.^{19,20} The compositional differences between the L_o and L_d phases result in a different bilayer thickness for each phase.²¹ Previous studies have shown the effects of bilayer thickness on membrane protein activity and conformation.^{22,23,24} An exciting potential application of switchable phase separated systems is the potential for changing bilayer thickness to control membrane protein conformation and hence activity.

Interestingly, hydrostatic pressure can be used both to control phase separation in ternary lipid mixtures^{18,25} and to change the thickness of lipid bilayers.²⁶ Moderate pressures (up to several hundred MPa) usually do not significantly change the structure of proteins.

The phase behaviour of mixtures containing dioleoylphosphatidylcholine (DOPC), dipalmitoylphosphatidylcholine (DPPC) and cholesterol (CHOL) has been extensively mapped both in temperature and compositional space. Broadly the phase diagram at 25°C consists of a two phase region (liquid ordered (L_o) – liquid disordered (L_d)) coexistence bounded by single phases.¹⁴ A region of three phase coexistence has also been reported including a solid ordered phase.²⁷ The boundary of the two phase region is known to be strongly influenced by both temperature and composition,²⁸ however much less is known

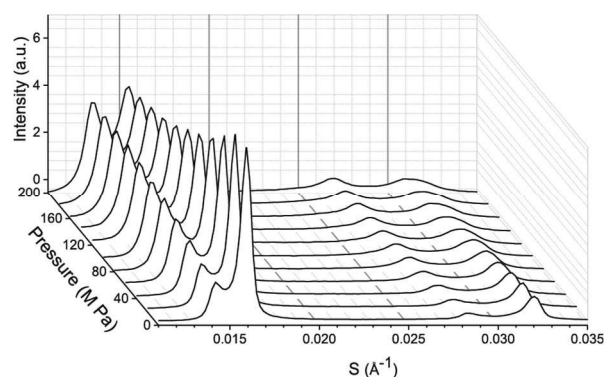


Figure 1. Example diffraction patterns from DOPC:DPPC:CHOL 60:29:11 at 25°C from 0–200 MPa in 20 MPa steps. Note the change in the diffraction pattern is reversible upon releasing the pressure and allowing the sample to re-equilibrate.

about the influence of pressure on the two phase region. The boundary of this region can be mapped by finding the endpoints of tie lines within the two phase region. Along a tie line, the compositions of the L_o and L_d phases are invariant, with only the relative amounts of the two phases changing. Recent work using lamellar lipid mesophases has shown that the L_o and L_d domains in phase separated mixtures tend to align between bilayers creating ‘stacks’ of L_o and L_d phases.^{12,21} This long range alignment, enables their characterisation using small angle X-ray diffraction (SAXS) as two distinct repeat distances can be detected when phase separation occurs in these systems.

While SAXS data from phase separated lipid systems show two distinct sets of lamellar diffraction peaks and hence two lattice parameters, assigning the peaks to the L_o and L_d phases can be difficult. Previously, Uppamoochikkal et al. determined the lattice parameters of oriented bilayers of DOPC:DPPC:CHOL at differing hydrations to find mixtures situated along the same tie lines.²¹ The L_o and L_d lattice parameters were assigned based on the relative intensities of the two sets of diffraction peaks and the position of the mixtures within the phase diagram. However, Jeworrek et al.²⁵ determined the variation of the two lattice parameters with increasing pressure and assigned these to the L_o and L_d phases based on the expected compressibility of the L_o and L_d phases, assuming that the L_d phase is likely to be more compressible than the L_o phase, due to the increased chain ordering within the L_o phase. Notably, these two approaches give different assignments of the L_o and L_d lattice parameters.

We have combined these approaches to assign the L_o and L_d lattice parameters using samples prepared along known tie lines, determined the response of these structures to hydrostatic pressure and so mapped changes in the tie line endpoints with pressure.

Pressure is a useful tool for studying the phase behaviour of lipid systems.^{29,26} Often, phase transitions induced by a decrease in temperature can be triggered by an increase in pressure. Pressure has been used extensively to study the mechanisms and kinetics of lipid phase transitions involving

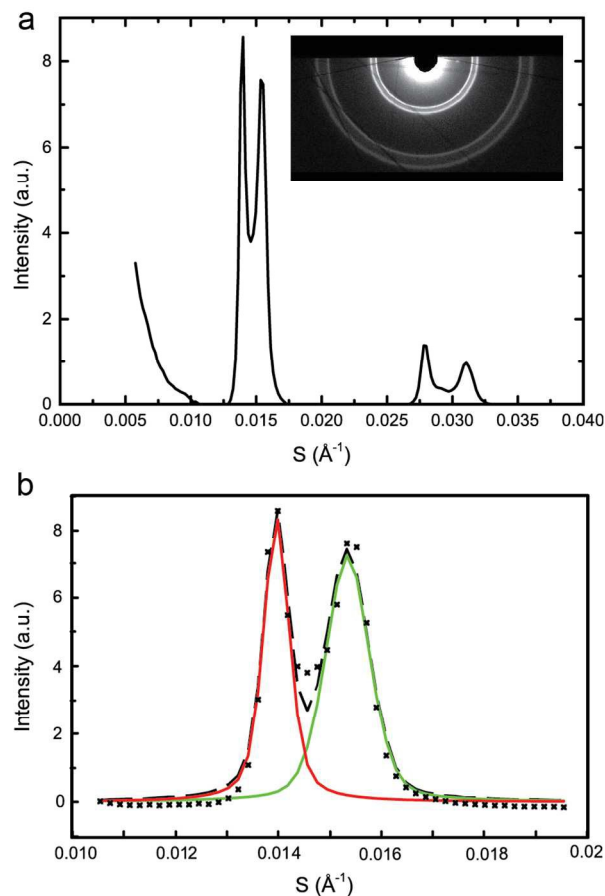


Figure 2. DOPC:DPPC:CHOL 42.5:42.5:15 mol% at 25°C, 0MPa showing (a) integrated diffraction pattern with the raw image (inset) (b) double pseudo-Voigt fitting of first order peak of the diffraction pattern with (x) raw data, (---) fit, (solid line) individual peak fits.

changes in interfacial curvature³⁰ and there has been some previous work investigating the effects of pressure on the more subtle lipid structural transitions involved in liquid – liquid phase separation within ternary lipid bilayer systems.^{18,25} However it is important to note that the effects of temperature and pressure are not directly opposite; decreasing temperature decreases the proportion of chains that can access higher rotameric energy levels, while increasing pressure increases the energy gap between rotameric levels, reducing the occupancy of higher energy levels.³¹ Increasing hydrostatic pressure on lipid model membranes increases the conformational order in the hydrocarbon chain region. The bulk modulus (volume compressibility) of the lipid chains is relatively high, so there is little variation in the chain volume at the pressures used here and the overall effect of pressure is to cause a lateral compression and longitudinal extension of the lipid chains, and so a thickening of the bilayer.^{29,32}

Recently, Heftberger et al.³³ have determined the structure and fluctuation of L_o – L_d phases and the effects on tie lines at different temperatures, however, while increasing hydrostatic pressure is known to trigger L_o – L_d phase separation, there is little known about changes of the L_o – L_d phase composition

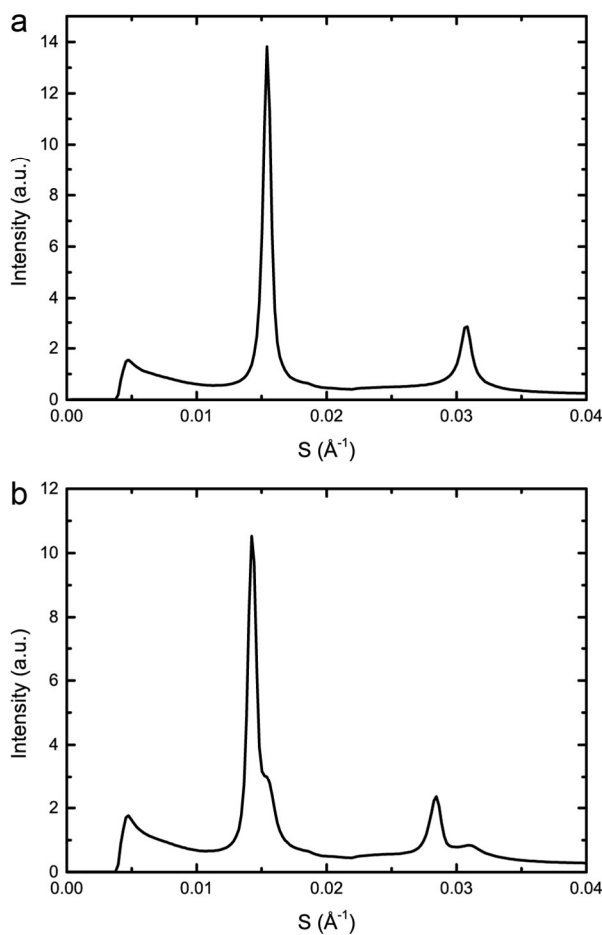


Figure 3. Example diffraction patterns of DOPC:DPPC:CHOL 40:40:20 mol% at 43°C and (a) 0 MPa (b) 200 MPa, showing phase separation upon increased pressure.

with pressure. We have been able to assign the two sets of SAXS diffraction peaks from randomly oriented phase separated lamellar lipid mixtures to the L_o and L_d phases by measuring the diffraction intensities from samples prepared along tie lines previously determined for ternary mixtures of DOPC:DPPC:CHOL.²⁷ We have subsequently been able to measure the change in lattice parameter of the L_o and L_d phases in response to hydrostatic pressure and map the change in the tie line end points over a range of pressures from atmospheric pressure to 100 MPa.

Experimental

Materials

1,2-dioleoyl-sn-glycero-3-phosphocholine (DOPC), 1,2-dipalmitoyl-sn-glycero-3-phosphocholine (DPPC) and cholesterol (ovine, wool) (chol) were purchased from Avanti Polar Lipids (AL, USA) as lyophilised powders. The lipids had a purity of >98% and were used without further purification, but were lyophilised for 12 hours before use to ensure they were fully dry.

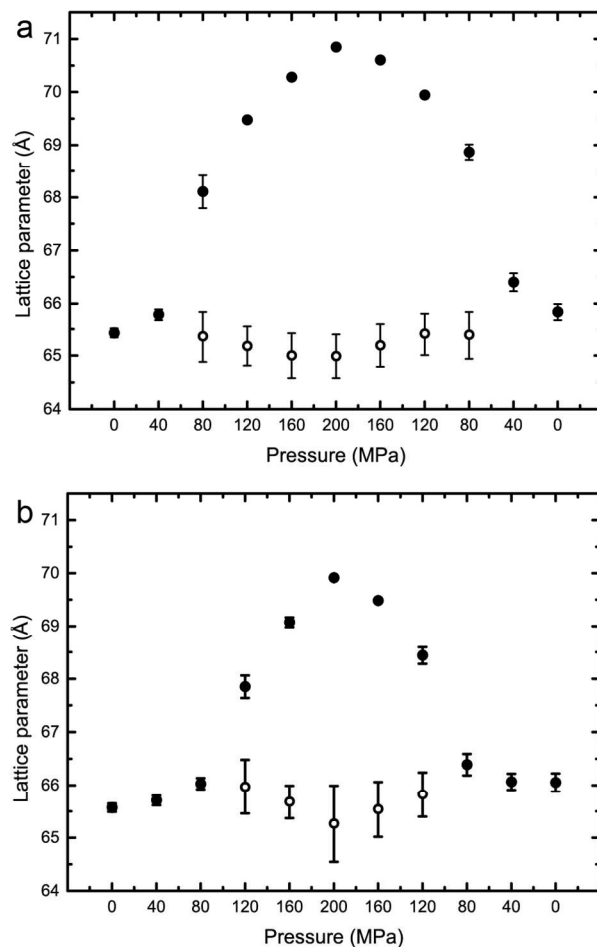


Figure 4. Lattice parameters for DOPC:DPPC:CHOL 40:40:20 mol% at (a) 43°C (b) 53°C. Note where only one lattice parameter is shown at any particular pressure, denotes a single mixed phase.

Lipid mixture preparation

Lipid mixtures were prepared by co-dissolving appropriate masses of lipid in chloroform (Sigma Aldrich, Gillingham, UK). The mixtures were dried under a stream of nitrogen gas for 3 hours and then under vacuum for a minimum of 12 hours, after which they were sealed and stored at -20°C before use. Samples were hydrated in HPLC grade water (VWR, UK) to 70 wt% water. After hydration, each sample was heat cycled (between approximately -200°C and 60°C) a minimum of ten times.

Small angle X-ray diffraction (SAXS)

SAXS patterns were measured at Diamond Light Source using beamline I22. Diffraction patterns were collected using an X-ray wavelength of 0.69 Å and a sample to detector distance of 1.2 m. Samples were contained in Teflon sample holders with mylar windows and then pressurised using the custom built high pressure cell available at beamline I22.³⁴ The phase separation of the samples was mapped at 25 °C between atmospheric pressure and 200 MPa for samples containing DOPC:DPPC:CHOL with molar ratios of 42.5:42.5:15,

26.03:52.07:21.9, 57:34:9, 16:58:26, 40:40:20, 60:29:11, 15:55:31 and at 43 °C, 55 °C and 0-200 MPa for the sample containing DOPC:DPPC:CHOL 40:40:20. Molar ratios were selected based on existing tie line data from Veatch et al.²⁷ A sample set of diffraction patterns showing the variation in peak intensity with pressure is shown for DOPC:DPPC:CHOL 60:29:11 at 25 °C in Figure 1.

Data Fitting

SAXS data was analysed using AXcess (an in house developed software package) to find lattice parameters³⁰ and a custom built LabVIEW based programme was used to fit single or double pseudo-Voigt functions to the diffraction peaks as appropriate. The pseudo-Voigt fits enabled accurate mapping of the diffraction peak areas as a function of DOPC, DPPC and CHOL concentration at each pressure and temperature studied. The normalised peak areas from samples lying along the same tie line were used to determine the ‘zero diffraction intensity’ composition for each phase (which correspond to the tie line end points) by linear extrapolation of the composition – peak intensity data (see ESI for full details). Figure 2a shows an example diffraction pattern for sample DOPC:DPPC:CHOL 42.5:42.4:15 mol%, with the corresponding double pseudo-Voigt fit shown in Figure 2b. We assume that the directions of the tie lines do not change significantly within the pressure range studied here. Previous studies on the effects of increasing temperature have shown an approximately 2° change in the orientation of the tie line of a ternary mixture of DOPC, DPPC and cholesterol between 15°C and 30°C. The majority of these changes occur between 25°C and 30°C with little change seen between 15°C and 20°C. Based on this we assume that a pressure increase of 100 MPa is unlikely to lead to more than a few degrees change in the tie line orientation.²¹ This is significant but as calculated previously,³³ unlikely to affect the endpoints of the tie lines more than +/- 3%, hence the assumption that the tie line orientation remains constant with increasing pressure.

Plots demonstrating the errors in the tie line endpoint compositions have been included in the ESI (Fig. S2). These show a clear trend in the pressure range 0-100 MPa. At 100 MPa, the tie lines have reached the edge of the phase diagram and the doublets become more difficult to resolve at the endpoints, leading to an increase in the errors. For lattice parameter determination, both the first and second order diffraction peaks were used, however for the tie line endpoint calculations only the first order diffraction peaks were used due to their significantly higher intensity relative to the second order peaks.

Results

The effects of increasing hydrostatic pressure on single phase and phase separated ternary mixtures of DOPC:DPPC:CHOL was determined using high-pressure SAXS under phase separated conditions. Using AXcess, the diffraction peaks for each sample were indexed for phase assignment and to

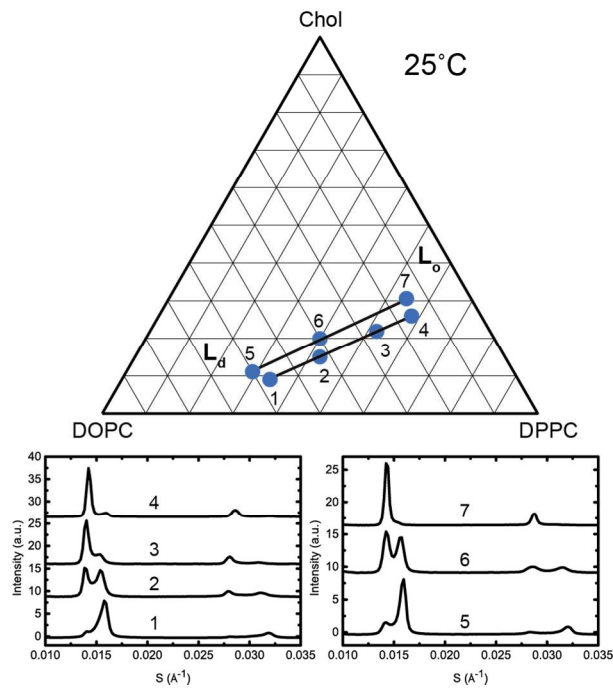


Figure 5. Diffraction patterns of samples at 25°C along two individual tie lines (below, left and right) with the samples shown on a phase diagram with the tie lines drawn in as a guide (above)

determine the lattice parameter. All samples exhibited a lamellar morphology and hence bilayer structure. The lattice parameters of the L_o and L_d phases were assigned by comparing compositions along known tie lines.

DOPC:DPPC:CHOL 40:40:20 mol%, exhibits phase separation at 25°C but shows a single phase at 43°C, however, increasing the pressure induced phase separation at 43°C, as shown in Figure 3. Increasing pressure in 40 MPa steps from 0 to 200 to 0 MPa showed induction of phase separation in this mixture at 40-80 MPa at 43°C and 80-120 MPa at 53°C as shown in Figure 4. At pressures where phase separation is observed, there are two distinct sets of diffraction peaks and so two lattice parameters. One of these lattice parameters shows an increase of ~5 Å at 43°C between 80 and 200 MPa and ~4 Å at 53°C between 120 and 200 MPa, with the other showing little variation with pressure at both temperatures. Notably this phase separation is reversible. However, this data was not sufficient to assign these lattice parameters to the L_o and L_d phases.

To assign the L_o and L_d lattice parameters, the relative intensities of the two sets of diffraction peaks from phase separated mixtures known to lie along tie lines previously determined at 25°C and 0 MPa were characterised. Diffraction peaks from the L_o and L_d phases (which are cholesterol rich and poor respectively), varied significantly in intensity along the tie lines enabling assignment of the peaks as shown in Figure 5. The diffraction patterns for samples 4 and 7 show two first order peaks, one with high intensity at ~0.014 Å⁻¹ and one with lower intensity at ~0.016 Å⁻¹, corresponding to lattice parameters of ~70 Å and 63 Å respectively.

At the opposite ends of the tie lines, samples 1 and 5 show peaks in the same position but with the intensities reversed. The

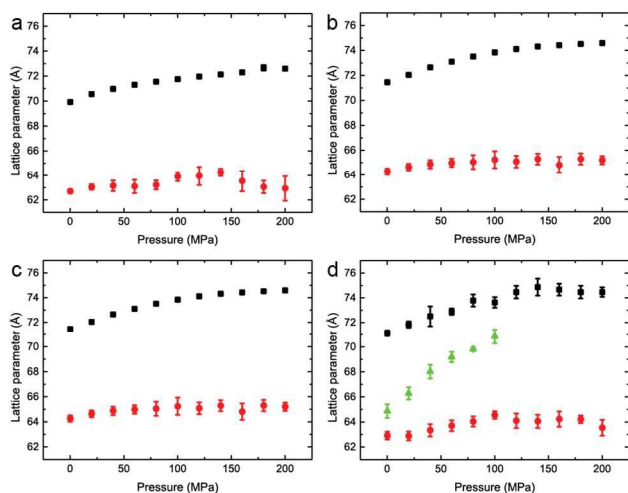


Figure 6. Lattice parameters for phase separated mixtures of DOPC:DPPC:CHOL at 25°C and 0-200 MPa (samples 1-4) in (a) 57:34:9 mol% (b) 42.5:42.5:15 mol% (c) 26.03:52.07:21.9 mol% (d) 16:58:26 mol%

cholesterol rich L_o phase must give rise to the diffraction peak with the highest intensity at the cholesterol rich end of the tie line (samples 4 and 7) and hence can be assigned to the 70 Å lattice parameter. Conversely, the 63 Å lattice parameter must correspond to the L_d phase. Notably in Figure 5, sample 1 shows evidence of a third phase being present. Using AXcess, sample 1 was indexed to 3 distinct lamellar phases observed as a peak broadening in the first order diffraction peaks and resolved as three individual peaks in the second order diffraction peaks. This has previously been identified as the solid ordered phase²⁷ and the assigned lattice parameter is in good agreement with previous literature.²⁵ We attribute the presence of this third phase to having just crossed over into the three component phase region which lies below the two phase region and where the solid ordered (s_o) phase exists in coexistence with the L_o and L_d phases. Because of this, sample 1 was excluded from the tie line endpoint determination fits.

The variation of the lattice parameters in samples 1-7 at 25°C and pressures between 0 and 200 MPa is shown in Figures 6 and 7. All samples showed phase separation at 25°C with sample 1 (Figure 6d) showing three phases. This third phase was not observed at higher pressures, this may be due to a subtle change in shape of the three phase region at higher pressure, or because of the relatively weak intensity of the s_o peak falling below the detection limit of the experiment.

Interestingly, the L_o phase shows an increase in lattice parameter of 3-5 Å over a 200 MPa increase at 25°C, whilst the L_d phase only shows an increase of 1 Å. This is even more pronounced in Figure 4 where the phase separation is induced using pressure; the L_d phase shows little change in lattice parameter after phase separation while the L_o phase shows an increase of ~5 Å after phase separation.

The changes in the tie line endpoints at high pressure were calculated using the experimental peak intensities and sample compositions. The results are shown in Figure 8 with the

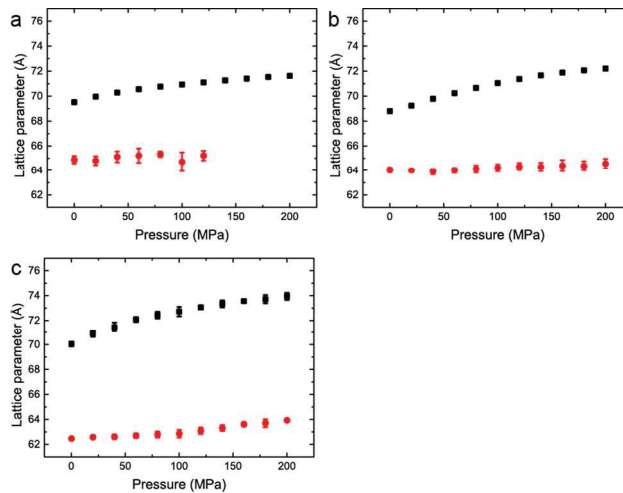


Figure 7. Lattice parameters for phase separated mixtures of DOPC:DPPC:CHOL at 25°C and 0-200 MPa (samples 5-7) in (a) 60:29:11 mol% (b) 40:40:20 mol% (c) 15:55:31 mol%

absolute numbers calculated shown in the ESI in tables S1 and S2. As the pressure increases from 0 to 200 MPa, there is an extension of the L_d end of the tie lines towards higher DOPC compositions, whilst the L_o end exhibits little change, with only a small movement towards increased DOPC. Previous studies on the variation of the two phase region with temperature have found a decrease in the area of the two phase region with increasing temperature.²⁷ Again, the major movement of the two phase boundary is from the DOPC rich L_d side, however there is a small movement of the L_o side towards higher DOPC at increased temperature. Interestingly the effects of increasing pressure and reducing pressure are similar for the L_d end of the tie lines but subtly different for the L_o end.

Discussion

In this ternary system the L_o phase has a larger lattice parameter than the L_d phase, despite the fact the L_o phase at 25°C, atmospheric pressure is rich in DPPC which has shorter hydrocarbon chains than DOPC. The L_d phase is DOPC rich and contains significantly less cholesterol than the L_o phase. Cholesterol is well known for increasing the ordering of hydrocarbon chains^{19,20,35} and has been observed to cause bilayer thickening.²⁶ The higher lattice parameter of the L_o phase compared to the L_d phase, implies that its higher degree of chain ordering is sufficient for the DPPC 16 carbon chains to exceed the length of the DOPC 18 carbon chains. The chain length in DOPC and DPPC only differs by two carbons and if this mismatch were greater (for example replacing DPPC with DMPC which has a 14 carbon chain), the increase in ordering may not be sufficient for the L_o phase to still exhibit the larger lattice parameter.

Previous work²⁵ has suggested that the liquid disordered (L_d) lipid phase would be expected to have a larger lateral compressibility (and so show greater bilayer thickening under

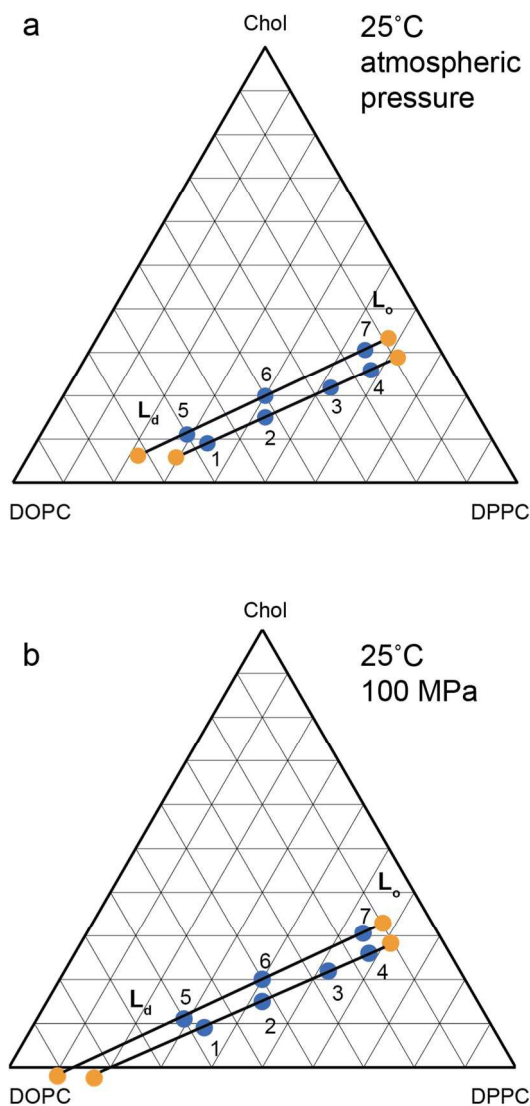


Figure 8. Calculated tie line endpoints at (a) atmospheric pressure (b) 100 MPa with numbered points denoting independent samples measured and tie line endpoints marked in orange with tie lines drawn as a guide. Errors are of the order of $\pm 5\text{mol}\%$ (Full details ESI Fig S2.)

pressure) than the L_o phase due to its greater hydrocarbon chain disorder. We find that with a pressure increase of 200 MPa, the lattice parameter of the L_o phase increases by 5\AA , in contrast to the L_d phase which shows a relatively small increase (approximately 1\AA) over the same pressure range. The lattice parameters are the sum of the bilayer thickness and the interstitial water layer and therefore, these results could imply that the L_o bilayer regions increase in thickness more than the L_d regions. The effects of increasing pressure are often qualitatively compared to decreasing temperature and at a phase transition can be described by the Clapeyron equation.³⁶ This system is not at a phase boundary and therefore the free energy for a structural change is not zero so temperature and pressure cannot be quantitatively compared, however a general rule of thumb indicates that changes in the lattice parameter observed

over a 100 MPa pressure increase are comparable to a change in temperature of approximately 22°C .²⁶

Previous work has shown a small increase in both the bilayer thickness and water layer thickness of the L_o phase with decreasing temperature.³³ However, over the same temperature range there was no clear trend for the bilayer thickness of the L_d phase and a small decrease in water layer thickness. Small changes in the area per lipid in the L_o and L_d phases as a function of temperature were also observed. This highlights the need for extensive investigation to decouple the water rearrangement and bilayer thickness in the L_o and L_d phases with increasing pressure which this is the subject of a separate investigation. However, the changes in water layer thickness described as a function of temperature³³ are smaller than those reported here, suggesting a change in bilayer thickness in addition to the water rearrangement.

Generally, an increase in pressure, increases ordering in the hydrocarbon chain region increasing the lattice parameter. However, recent studies³⁷ have shown that the effects of pressure on lattice parameters can be a complex interplay between different interactions within the membrane. The incorporation of cholesterol led to a greater decrease in lattice parameter with increasing pressure in a ternary lipid system containing monoolein, a charged lipid and cholesterol. This was attributed initially to cholesterol decreasing the sensitivity of the hydrocarbon chains to hydrostatic pressure,^{38,39} followed by a change in electrostatics. Here, no such electrostatic interactions are present and the lattice parameter change is not curvature driven, hence the potential differences in compressibility between the L_o and L_d phases must be solely due to their compositional differences and how these lipids interact with cholesterol. DOPC contains two double bonds in the hydrocarbon chain region, whilst the DPPC is fully saturated. This will lead to a significant difference in the steric volume of the two chain regions and also their ability to pack. Previously reported values for the area per lipid and also volume per lipid show that the area and volume of DOPC in the fluid lamellar phase is larger than that for DPPC, despite their identical headgroups.⁴⁰ Simulations of DOPC with cholesterol⁴¹ and DPPC with cholesterol⁴² have also shown that cholesterol causes a larger reduction in the molecular area of DPPC than DOPC, implying a greater ability to pack and hence potentially a greater lateral compressibility as observed here.

The change in the length of the tie lines with increasing pressure, shows an extension towards the L_d region (increased DOPC and decreased DPPC compositions with little change in the L_o end. Whilst it is possible that the orientation of the tie lines may vary with pressure, the small variation in the L_d and L_o lattice parameters between samples on prepared on the same atmospheric pressure tie line indicates that any changes are small. While the changes in the L_o phase composition are small, the effect of increasing pressure differs subtly from that observed with decreasing temperature; increasing pressure causes incorporation of more DOPC into the L_o phase, decreasing temperature causes the L_o phase to become richer in DPPC and cholesterol.

Conclusions

We have demonstrated the effects of hydrostatic pressure on tie lines of ternary lipid mixtures. Increasing pressure from 0 to 100 MPa increased the size of the two phase region, with an extension towards higher DOPC concentrations. By assigning the L_o and L_d lattice parameters, we have shown that the L_o phase is more laterally compressible than the L_d phase; the L_o phase shows a significant increase in lattice parameter with increasing pressure whereas the L_d phase shows little variation. This offers the exciting potential of using pressure to induce phase separation in model membranes and subsequently tuning the bilayer thickness of the different phases to influence protein conformation.

Acknowledgements

This work was supported by EPSRC Programme grant EP/J017566/1. We acknowledge Diamond Light Source for provision of synchrotron beamtime and we would like to thank Dr. Andy Smith for assistance using beamline I22.

Notes and references

^a Department of Chemistry, Imperial College London

* nicholas.brooks@imperial.ac.uk; hanna.barriga@imperial.ac.uk

Electronic Supplementary Information (ESI) available: Further details of tie line endpoint determination See DOI: 10.1039/b000000x/

- H. T. McMahon and J. L. Gallop, *Nature*, 2005, **438**, 590-596.
- G. Van Meer, *Annual Review of Cell Biology*, 1989, **5**, 247-275.
- K. Simons and E. Ikonen, *Nature*, 1997, **387**, 569-572.
- M. Edidin, *Annual Review Biophysics and Biomolecular Structure*, 2003, **32**, 257-283.
- K. Simons and D. Toomre, *Nature Reviews Molecular Cell Biology*, 2000, **1**, 31-39.
- B. Stancevic and R. Kolesnick, *FEBS letters*, 2010, **584**, 1728-1740.
- B. J. Pettus, C. E. Chalfant and Y. A. Hannun, *Biochimica et biophysica acta*, 2002, **1585**, 114-125.
- E. Sezgin, I. Levental, M. Grzybek, G. Schwarzmann, V. Mueller, A. Honigmann, V. N. Belov, C. Eggeling, U. Coskun, K. Simons and P. Schwille, *Biochimica et biophysica acta*, 2012, **1818**, 1777-1784.
- T. Bhatia, P. Husen, J. H. Ipsen, L. A. Bagatolli and A. C. Simonsen, *Biochimica et biophysica acta*, 2014, **1838**, 2503-2510.
- A. Honigmann, V. Mueller, H. Ta, A. Schoenle, E. Sezgin, S. W. Hell and C. Eggeling, *Nature communications*, 2014, **5**, 5412.
- D. A. Brown and E. London, *Annual Review of Cell and Developmental Biology*, 1998, **14**, 111-136.
- L. Tayebi, Y. Ma, D. Vashaee, G. Chen, S. K. Sinha and A. N. Parikh, *Nature materials*, 2012, **11**, 1074-1080.
- J. V. Busto, A. B. Garcia-Arribas, J. Sot, A. Torrecillas, J. C. Gomez-Fernandez, F. M. Goni and A. Alonso, *Biophysical journal*, 2014, **106**, 621-630.
- S. L. Veatch and S. L. Keller, *Biophysical journal*, 2003, **85**, 3074-3083.
- S. L. Veatch and S. L. Keller, *Biochimica et biophysica acta*, 2005, **1746**, 172-185.
- Y. Z. Yoon, J. P. Hale, P. G. Petrov and P. Cicuta, *Journal of Physics Condensed Matter*, 2010, **22**, 062101.
- T. Baumgart, A. T. Hammond, P. Sengupta, S. T. Hess, D. A. Holowka, B. A. Baird and W. W. Webb, *Proceedings of the National Academy of Sciences USA*, 2007, **104**, 3165-3170.
- N. L. C. McCarthy, O. Ces, R. V. Law, J. M. Seddon and N. J. Brooks, *Chemical communications*, 2015, **51**, 8675-8678.
- I. V. Polozov and K. Gawrisch, *Biophysical journal*, 2006, **90**, 2051-2061.
- J. A. Clarke, J. M. Seddon and R. V. Law, *Soft Matter*, 2009, **5**, 369.
- P. Uppamoochikkal, S. Tristram-Nagle and J. F. Nagle, *Langmuir*, 2010, **26**, 17363-17368.
- J. D. Pilot, J. M. East and A. G. Lee, *Biochemistry*, 2001, **40**, 8188-8195.
- A. M. Powl, J. M. East and A. G. Lee, *Biophysical journal*, 2007, **93**, 113-122.
- A. R. Curran, R. H. Templer and P. J. Booth, *Biochemistry*, 1999, **38**, 9328-9336.
- C. Jeworrek, M. Puhse and R. Winter, *Langmuir*, 2008, **24**, 11851-11859.
- R. Winter and C. Jeworrek, *Soft Matter*, 2009, **5**, 3157.
- S. L. Veatch, O. Soubias, S. L. Keller and K. Gawrisch, *Proceedings of the National Academy of Sciences USA*, 2007, **104**, 17650-17655.
- J. H. Davis and M. L. Schmidt, *Biophysical journal*, 2014, **106**, 1970-1978.
- N. J. Brooks, O. Ces, R. H. Templer and J. M. Seddon, *Chemistry and physics of lipids*, 2011, **164**, 89-98.
- J. M. Seddon, A. M. Squires, C. E. Conn, O. Ces, A. J. Heron, X. Mulet, G. C. Shearman and R. H. Templer, *Philosophical Transactions Series A Mathematical Physical and Engineering Sciences*, 2006, **364**, 2635-2655.
- T. Y. Tang, N. J. Brooks, C. Jeworrek, O. Ces, N. J. Terrill, R. Winter, R. H. Templer and J. M. Seddon, *Langmuir*, 2012, **28**, 13018-13024.
- S. Purushothaman, P. Cicuta, O. Ces and N. J. Brooks, *The Journal of Physical Chemistry B*, 2015, **Just accepted**.
- P. Heftberger, B. Kollmitzer, A. A. Rieder, H. Amenitsch and G. Pabst, *Biophysical journal*, 2015, **108**, 854-862.
- N. J. Brooks, B. L. Gauthe, N. J. Terrill, S. E. Rogers, R. H. Templer, O. Ces and J. M. Seddon, *Review of Scientific Instruments*, 2010, **81**, 064103.
- V. Cherezov, J. Clogston, Y. Misquitta, W. Abdel-Gawad and M. Caffrey, *Biophysical journal*, 2002, **83**, 3393-3407.
- S. Purushothaman, P. Cicuta, O. Ces and N. J. Brooks, *The Journal of Physical Chemistry B*, 2015, **119**, 9805-9810.
- H. M. Barriga, A. I. Tyler, N. L. McCarthy, E. S. Parsons, O. Ces, R. V. Law, J. M. Seddon and N. J. Brooks, *Soft Matter*, 2015, **11**, 600-607.
- O. Reis, R. Winter and T. W. Zerda, *Biochimica et biophysica acta*, 1996, **1279**, 5-16.
- L. F. Braganza and D. L. Worcester, *Biochemistry*, 1986, **25**, 7484-7488.
- J. F. Nagle and S. Tristram-Nagle, *Biochimica et biophysica acta*, 2000, **1469**, 159-195.
- M. Alwarawrah, J. Dai and J. Huang, *The Journal of Physical Chemistry B*, 2010, **114**, 7516-7523.
- S. W. Chiu, E. Jakobsson, R. J. Mashl and H. L. Scott, *Biophysical journal*, 2002, **83**, 1842-1853.