

# PCCP

Accepted Manuscript



This is an *Accepted Manuscript*, which has been through the Royal Society of Chemistry peer review process and has been accepted for publication.

*Accepted Manuscripts* are published online shortly after acceptance, before technical editing, formatting and proof reading. Using this free service, authors can make their results available to the community, in citable form, before we publish the edited article. We will replace this *Accepted Manuscript* with the edited and formatted *Advance Article* as soon as it is available.

You can find more information about *Accepted Manuscripts* in the [Information for Authors](#).

Please note that technical editing may introduce minor changes to the text and/or graphics, which may alter content. The journal's standard [Terms & Conditions](#) and the [Ethical guidelines](#) still apply. In no event shall the Royal Society of Chemistry be held responsible for any errors or omissions in this *Accepted Manuscript* or any consequences arising from the use of any information it contains.

# Two-photon absorption of fluorescent protein chromophores incorporating non-canonical amino acids: TD-DFT screening and classical dynamics†

M. Alaraby Salem<sup>a</sup> and Alex Brown<sup>a\*</sup>

Received Xth XXXXXXXXXXXX 20XX, Accepted Xth XXXXXXXXXXXX 20XX

First published on the web Xth XXXXXXXXXXXX 200X

DOI: 10.1039/b000000x

Two-photon spectroscopy of fluorescent proteins is a powerful bio-imaging tool characterized by deep tissue penetration and little damage. However, two-photon spectroscopy has lower sensitivity than one-photon microscopy alternatives and hence a protein with a large two-photon absorption cross-section is needed. We use time-dependent density functional theory (TD-DFT) at the B3LYP/6-31+G(d,p) level of theory to screen twenty-two possible chromophores that can be formed upon replacing the amino-acid Tyr66 that forms the green fluorescent protein (GFP) chromophore with a non-canonical amino acid. A proposed chromophore with a nitro substituent was found to have a large two-photon absorption cross-section (29 GM) compared to other fluorescent protein chromophores as determined at the same level of theory. Classical molecular dynamics are then performed on a nitro-modified fluorescent protein to test its stability and study the effect of the conformational flexibility of the chromophore on its two-photon absorption cross-section. The theoretical results show that the large cross-section is primarily due to the difference between the permanent dipole moments of the excited and ground states of the nitro-modified chromophore. This large difference is maintained through the various conformations assumed by the chromophore in the protein cavity. The nitro-derived protein appears to be very promising as a two-photon absorption probe.

## 1 Introduction

Fluorescent proteins (FPs) are the family of homologues of the green fluorescent protein (GFP) of *Aequorea victoria* initially discovered in the 1960s.<sup>1</sup> FPs found great utility as spectroscopic tools after the cloning of the GFP gene<sup>2</sup> and the demonstration that they can be expressed in other organisms while maintaining their fluorescent properties.<sup>3,4</sup> The unique light-absorbing and fluorescence ability for FPs is due to the formation of a chromophore by a post-translational modification of three precursory amino acids within the protein shell (Fig. 1).<sup>5,6</sup> The coarse tuning of the colour of fluorescence is generally mediated by the alteration of the precursory amino acids which lead to different chromophores upon maturation.

<sup>a</sup>Department of Chemistry, University of Alberta, Edmonton, Alberta T6G 2G2 Canada. Fax: 780-492-8231; Tel: 780-492-1854; E-mail: alex.brown@ualberta.ca

† Electronic Supplementary Information (ESI) available: Coordinates of optimized chromophore structures (Table S1), parameters used for the chromophores in the MD simulation (Tables S2 and S3 and following text), input files for the MD simulation,  $\delta^{TPA}$  values (Table S4), comparison of bond lengths from MD simulations, DFT, and, for EGFP, crystal structure (Tables S5 and S6), comparison of PCM and gas-phase TD-DFT results for selected chromophores (Table S7), 3D plot for the variation of energy with the studied angles in the conformational analysis (Figure S1), z-matrix used to generate various conformers in the conformational analysis (Table S8), TD-DFT results for the conformational analysis (Table S9). See DOI: 10.1039/b000000x/

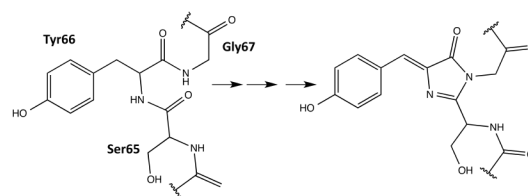


Fig. 1 Chromophore maturation in GFP.

Changes in the micro-environment of the chromophore can also strongly affect the colour of the fluorescence, as seen in some yellow variants of the GFP.<sup>7</sup> In addition to fluorescence wavelength, the protein environment generally offers fine tuning for all photophysical properties of the FP. A full palette spanning red to blue fluorescent proteins has been synthesized<sup>8,9</sup> with the red-shifted chromophores being of great interest due to their lower cell-toxicity.<sup>10</sup>

Two-photon microscopy of FPs offers many advantages over its conventional one-photon counterpart. It is less phototoxic, as photons of longer wavelength (and less energy) are absorbed and provides better focus and less out-of-focus bleaching enabling it to have deeper penetration into thick tissues.<sup>11,12</sup> These advantages arise because the two-photon absorption (TPA) probability, the so-called TPA cross-section, is

directly proportional to the square of incident light intensity. This property, however, causes TPA to have less sensitivity compared to its one-photon counterpart. Thus, fluorophores with large TPA cross-sections are preferred - a major motivation for this work. TPA is governed by different quantum mechanical selection rules as compared to one-photon absorption (OPA) and so structural modifications in the protein environment can significantly affect the TPA of a FP with minimal effect on its OPA. For example, in the series of red FPs, their measured TPA cross-sections range from 15 GM (for mTangerine<sup>13</sup>) to 119 GM (for tdTomato<sup>13</sup>) for the lowest-energy excitation although they all share the same chromophore.<sup>14</sup>

In addition to the known general difficulty of measuring absolute TPA cross-sections,<sup>15</sup> measurements in biological systems like FPs are more challenging due to the need for additional calibration. Drobizhev et al. comprehensively explained and cited the discrepancies in the reported absolute TPA cross-sections of FPs.<sup>14</sup> Generally, the TPA spectrum of a FP has two regions of strong absorption: one is at (approximately) double the wavelength of the OPA peak and an additional (strong) band of absorption corresponds to a shorter wavelength. In the FPs with anionic chromophores, the TPA peak is blue-shifted with respect to the corresponding OPA peak (at half the wavelength). This has been rationalized by the enhancement of a vibronic transition in the two-photon process.<sup>16–19</sup> The additional band that is absent from the corresponding OPA spectrum was first theoretically predicted<sup>20</sup> to be present in the TPA spectra of all FPs and later confirmed through experimental measurements.<sup>14</sup> Theoretical investigations showed that the peak at longer wavelength is caused by the excitation to the first excited state ( $S_0$  to  $S_1$ ), while the other short-wavelength peak is due to a transition to a higher electronic level ( $S_0$  to  $S_n$ ). TPA corresponding to the higher-energy transitions has been shown to be amplified due to a resonance enhancement effect.<sup>20–22</sup> Being in the near-IR region, the  $S_0$  to  $S_1$  absorptions are of more practical relevance and thus are the focus of the present work.

Some theoretical studies of the TPA properties of FPs include the whole protein via combined quantum mechanics/molecular mechanics (QM/MM) approaches. List et al. studied the steric factors and chromophore protein-interactions that result in the enhancement of the TPA peak corresponding to the  $S_0$ - $S_1$  transition in DsRED,<sup>23</sup> a red FP.<sup>19</sup> They attributed the TPA enhancement to the increase in the difference between the permanent dipole moments of the excited and ground states. Another study on GFP succeeded in qualitatively reproducing most of the experimental features of the TPA spectrum.<sup>24</sup> Although the TPA cross-section of a chromophore can be largely altered by the protein environment, studying the isolated chromophore can be a good starting point to predict or understand the TPA properties of the protein.<sup>20</sup> A study of the chromophore and close-by residues

of a yellow variant of GFP employed RICC2 and TD-DFT with CAM-B3LYP to discern the effect of  $\pi$ - $\pi$  stacking on TPA.<sup>25</sup> Although there was good qualitative agreement between the two methods, the values of TPA cross-sections had to be scaled for comparison. In a benchmark study, Salem and Brown evaluated the use of several functionals by comparing the TPA of isolated FP chromophores as computed via TD-DFT to averaged experimental data and higher-level CC2 computations.<sup>22</sup> Results showed that the B3LYP functional can provide a semi-quantitative description of the major TPA peaks. Recently, equation-of-motion coupled-cluster with single and double substitutions (EOM-CCSD)<sup>26,27</sup> was formulated for TPA and applied to chromophores of GFP and photoactive yellow protein.<sup>28</sup> TPA transition moment values computed with this method are comparable to TD-DFT values for similar model chromophores. These studies support the use of computation to design rationally new chromophores.

While many FPs have been engineered and a subset scrutinized computationally, they have, in general, been built from the canonical 20 amino acids. However, the protein engineering toolbox has been rapidly expanding as protein chemists have developed methods for incorporating non-canonical amino acids (ncAAs) into proteins.<sup>29–33</sup> Incorporating ncAAs can generate proteins with novel properties. A number of FPs containing ncAAs, which have been incorporated into the chromophore, have been engineered and experimentally characterized for their OPA and fluorescence properties;<sup>34–42</sup> to the best of our knowledge, TPA has not been explored for FPs containing ncAAs. A notable example for OPA is the Gold FP (GdFP),<sup>36</sup> which is represented by model 20 in Figure 2 where Trp57 and Trp56 in enhanced cyan FP (ECFP) have been replaced by 4-amino-Trp. These substitutions lead to a strongly red-shifted emission compared to ECFP. Site-specific substitutions of ncAAs for Tyr66 in GFP have also lead to novel chromophore structures with spectral properties notably different from the wild-type GFP.<sup>35,38</sup> As examples for residue-specific mutations, two tyrosine analogues (3-amino-L-tyrosine and 3-fluoro-L-tyrosine) have been incorporated into the DsRed-Monomer FP, leading to shifts in fluorescence wavelengths but, more importantly, increases in quantum yield.<sup>39</sup> While incorporation of ncAAs can directly influence the chromophore structure, ncAAs inserted outside the central chromophore can indirectly change its excitation and/or emission behavior.<sup>43</sup> Although using ncAAs in FP design clearly opens up new possibilities, the use of ncAAs is difficult. Thus, any newly designed FP must function better or differently than one that can be engineered using the 20 canonical amino acids. In this work, we use TD-DFT to screen a variety of possible chromophores that can result from the replacement of the Tyr residue of the tripeptide precursor with one of the ncAAs previously used in protein synthesis. The property at focus is the TPA of the chromophore. The

most promising candidate is further simulated in a proposed protein environment using molecular dynamics (MD) to study the protein stability and the steric effects of the protein on the TPA of the chromophore.

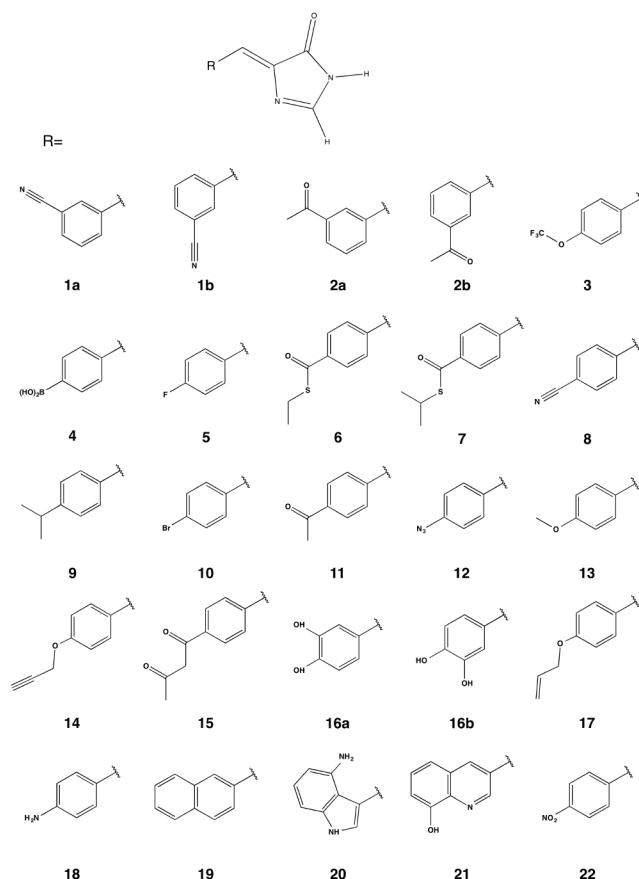
## 2 Computational Methods

### 2.1 Chromophores

A template chromophore model was obtained from GFP by breaking the chromophore connections to the rest of the protein and capping with H-atoms. The  $\pi$ -conjugated system necessary for TPA is preserved. Our previous work showed that methyl capping is only crucial when the chromophore has an extended conjugation beyond that in the GFP chromophore.<sup>22</sup> Since we only include chromophores derived from a GFP-chromophore template, capping with hydrogen atoms in this present study yields nearly the same TPA values as with methyl groups. We selected candidate amino acids from those compiled by Liu et al.<sup>30</sup> based on the following two criteria: (1) Having an aromatic ring that is necessary for extended conjugation. (2) Excluding bulkier systems that are less likely to fit in the chromophore cavity (without engineering the protein to accommodate the larger sized moiety), or that may not have enough flexibility to mature into the chromophore. For comparison, however, we considered 2 models (19 and 21) with two-cyclic rings that are comparable to that in the GdFP (model 20). The protein with the 2-naphthyl moiety (Model 19) was previously shown to be non-fluorescent probably because the cavity needed to be further manipulated to accommodate the chromophore, as suggested by the authors.<sup>35</sup> Assuming a point mutation at Tyr 66, the phenol ring of the chromophore is replaced with the corresponding moiety in the given ncAA yielding the chromophore models in Figure 2. For chromophores 1, 2 and 16, both the E and the Z isomers were considered and labelled a and b, respectively.

### 2.2 Ab initio computations

Following a previous protocol,<sup>22</sup> the chromophore models were optimized in the gas phase using the PBE0 functional<sup>44,45</sup> (optimized coordinates are given in Table S1, ESI†). Excited-states properties were computed with TD-DFT<sup>46</sup> within the response theory framework using the B3LYP functional<sup>47</sup> and the conductor-like polarizable continuum model (commonly referred to as PCM)<sup>48-51</sup> with parameters for water - except where noted. The basis set 6-31+G(d,p)<sup>52-56</sup> in cartesian form, i.e., 6 d-functions, was used in all computations. OPA oscillator strengths (and similarly the transition dipole moments from ground to excited states) were computed via linear response<sup>57</sup> while the two-photon transition matrix elements and the transition dipole



**Fig. 2** Chromophore models built from the parent GFP chromophore by replacing the phenol of Tyr-66 with the corresponding moiety in a ncAA.

moments between excited states were evaluated from the single and double residues of the quadratic response function,<sup>58-61</sup> respectively. Dipole moment elements not involving the ground state ( $\langle n|\mu|n\rangle$  and  $\langle n|\mu|m\rangle$ , where  $n, m \neq 0$ ) were computed via the DALTON<sup>62</sup> software package in the gas phase. All other computations were done with GAMESS-US<sup>63</sup> (the May-2013 version). For computations with PCM, default parameters in the GAMESS code were utilized.

For linearly polarized light, the transition moment for TPA is

$$\delta^{TPA} = \frac{1}{15} \sum_{\alpha\beta} [S_{\alpha\alpha} S_{\beta\beta}^* + 2S_{\alpha\beta} S_{\alpha\beta}^*], \quad (1)$$

where the elements of the two-photon transition matrix are given by:

$$S_{\alpha\beta} = \sum_n \left[ \frac{\langle 0|\mu_\alpha|n\rangle \langle n|\mu_\beta|f\rangle}{\omega_n - \omega} + \frac{\langle 0|\mu_\beta|n\rangle \langle n|\mu_\alpha|f\rangle}{\omega_n - \omega} \right]. \quad (2)$$

In Eq. 2  $\mu_\alpha$  and  $\mu_\beta$  refer to the dipole moment operator in a given cartesian direction ( $\alpha, \beta = x, y$  and  $z$ ),  $\omega_n$  is the energy

gap from the ground state,  $|0\rangle$ , to a given state  $|n\rangle$ ,  $\omega$  is the photon energy and  $|f\rangle$  is the final excited state.

From the TPA transition moment and excitation energies ( $\omega_f$ ) produced by GAMESS, the TPA cross-section is calculated in macroscopic units by:

$$\sigma_{TPA} = \frac{4\pi^2 a_0^5 \alpha \omega^2}{c \Gamma} \delta_{TPA}, \quad (3)$$

where  $\alpha$  is the fine structure constant,  $a_0$  is the Bohr radius,  $c$  is the speed of light,  $\omega$  is the photon energy ( $=\frac{\omega_f}{2}$ ) and  $\Gamma$  is the broadening factor derived from a Lorentzian function and chosen to be 0.1 eV, as previously employed<sup>20,22,64</sup> for comparison with experiment. The choice of the conversion equation (Eq. 3) and the broadening factor,  $\Gamma$ , affect the resulting values of the TPA cross-sections. In a recent study, Beerepot et al.<sup>65</sup> discussed the various forms of Eq. 3 and gave recommendations on presenting TPA for computational studies.

### 2.3 Molecular Dynamics Simulation

To test the stability of a protein upon the introduction of a selected ncAA, MD trajectories were generated following the same protocol for two FPs: (1) a reference EGFP (PDB ID: 2Y0G) with the corresponding anionic chromophore which we refer to as *control* and (2) the same protein after replacing the chromophore with Model 22 (see Figure 2) that is assumed to be formed by replacing Tyr 66 with a Tyrosine-derived ncAA. We refer to this modified protein as *nitro*.

The crystal structure for the *control* and its modified *nitro* version were prepared using the `pdb4amber` and `reduce` programs<sup>66</sup> in `Ambertools` 14. The 2Y0G crystal structure is missing 12 residues from the protein termini and hence these are unlikely to affect the dynamics of the  $\beta$ -barrel or the chromophore environment. The missing residues are not considered and the protein is renumbered, so that the chromophore is formed by residue 63. The all-atom forcefield AMBER ff12SB<sup>67,68</sup> was used to parameterize both protein models except for the chromophore residue. The chromophore in both cases includes all atoms between the LEU 62 and the VAL 64 so that more linker atoms are considered than in the attenuated models used for DFT screening (see Tables S2 and S3, ESI†). Although previously validated parameters are available for the *control* chromophore,<sup>69</sup> we adopted a general procedure to parameterize both *nitro* and *control* chromophores and it can be easily extended to test other residues of interest. The parameters generated here serve the purpose of determining the protein stability and conformational freedom of the chromophore. We used ANTECHAMBER<sup>70</sup> to generate parameters for the *nitro* chromophore that are consistent with the General Amber Force Field (GAFF).<sup>71</sup> We assigned similar parameters to the *control* chromophore. Charges were derived using the online R.E.D. server development tool<sup>72</sup> following

the default scheme for amino acid fragments. All parameters are given in the ESI† (see Tables S2 and S3 for atom types and charges). All crystallographic water molecules were removed, including those in the vicinity of the chromophore to enable extra conformational freedom. Each protein model was solvated with approximately 71,000 TIP3P water molecules in a cuboid solvation box with edge length of 20 Å. To neutralize the negatively charged protein, 7 Na<sup>+</sup> ions were added to each model followed by 64 Na<sup>+</sup> and Cl<sup>-</sup> ions to reach a salt concentration of 0.15 M.

The MD simulation was done with the AMBER Molecular Dynamics package<sup>73</sup> following a standard protocol that consists of minimization, heating, density equilibration and production. Minimization was done first with restraints on the protein atoms and then repeated without restraints. Heating was applied gradually for 20 ps with restraints on the protein atoms. Density equilibration was achieved in four 50-ps runs gradually relieving the restraint. This was followed by a production run at constant pressure for 99 ns. Langevin dynamics were employed globally throughout the simulation. Details of the simulation are provided in terms of Amber input files in the ESI†. Trajectories were analyzed via CPPTRAJ.<sup>74</sup>

## 3 Results and Discussion

Computing the TPA of FPs involves several levels of complexity. In addition to the intrinsic nature of the chromophore, there are other factors that affect the TPA of a FP. One factor is that the protein shell can change the conformation of the chromophore to enhance or diminish its two-photon absorption cross-section.<sup>19,22</sup> This factor can be accounted for via TD-DFT which can capture the change in TPA associated with various conformers in a semi-quantitative fashion.<sup>22</sup> Another level of complexity is added by the protein-chromophore interactions, or the electric field due to the protein around the chromophore, which can greatly influence the TPA cross-section.<sup>14,19</sup> In the present work, we compute TPA cross-sections for isolated chromophores ignoring the protein shell (Section 3.1). We then account for part of the influence of the protein shell by running a classical MD simulation for an EGFP-based protein with the chromophore predicted to have the largest cross-section (*nitro*) and compare it to an analogous simulation for its native form (*control*). The motivation is to obtain insight into the relative stability of the protein after introducing the new moiety (Section 3.2) and to account for part of the influence of the protein shell on the chromophore, through studying its flexibility over the trajectory and computing TPA for different conformations of the isolated chromophore (Section 3.3).

### 3.1 TPA cross-sections

The TPA cross-sections for the lowest-energy transition ( $S_0$ - $S_1$ ) of all the GFP-derived chromophores with natural amino acids have been previously computed.<sup>22</sup> Their TPA cross-sections at the B3LYP/6-31G+(d,p) level of theory in PCM H<sub>2</sub>O range from 1 GM (for the BFP<sup>75,76</sup> chromophore) to 7 GM (for the CFP<sup>76</sup> chromophore) when scaled according to Eq. 3 in the present study. As discussed by Beerepot et al.<sup>65</sup>, the TPA values reported previously<sup>22</sup> are too large by a factor of 4. An equivalent range of TPA cross sections is determined for molecules 5 through 18 in this study. TPA cross-sections, as computed from Eq. 3, are given in Table 1 while  $\delta^{TPA}$  values are given in Table S4 in the ESI†. Proteins with bromo, methoxy and amino substituted chromophores (models 10,13 and 18, respectively) have been previously synthesized and shown to be fluorescent.<sup>35</sup> Their measured OPA energies are: 3.31 eV, 3.15 eV and 2.85 eV, respectively.<sup>35</sup> Compared to the values 3.37 eV, 3.29 eV and 3.14 eV in Table 1, TD-DFT using B3LYP/6-31+G(d,p) captures the proper trend within the expected error. For model 20, the computed energy of 2.69 eV is very close to the measured absorption peak at 2.66 eV for the corresponding GdFP<sup>36</sup>. The trend in Table 1 looks very promising because, in general, the chromophores with the largest computed TPA cross-sections are the most red-shifted ones.

Although the computation was done in the response theory framework, comparison to a truncated sum-over-states expression gives insight into the factors contributing to the TPA cross section. In a 2-level model (2LM) approximation, the TPA cross-section is proportional to the square of the difference between the permanent dipole moments of the excited and ground states ( $(\langle 1|\mu|1\rangle - \langle 0|\mu|0\rangle)^2$ ) and that of the transition dipole moment from the ground to the excited state ( $(\langle 0|\mu|1\rangle)^2$ ). The dipole elements for the chromophore models were determined in the gas phase, as the corresponding PCM computation were difficult to converge in DALTON. This change in medium does not affect the analysis, as the trend of TPA cross-sections for the first bright transition is the same whether computed with PCM or in the gas phase (Table S7, ESI†). The dipole elements and the corresponding cross-sections ( $\sigma_{2LM}$ ) calculated directly using Eqs. 1 - 3 are given in Table 2 for the models where the first gas-phase excitation corresponds to the first PCM one. There is a significant discrepancy between the absolute  $\sigma$  values computed via response theory (see Table S7, ESI†) and the corresponding 2LM ones (Table 2). However, the trend is the same (with the exchange of order for models 16a and 18). Since all studied molecules are nearly planar (symmetry was not enforced during geometry optimization), there is no contribution from dipole elements along the  $z$ -axis. Most of the contribution comes from the dipole moments along the  $x$ -axis which runs through the  $\pi$ -conjugated system.

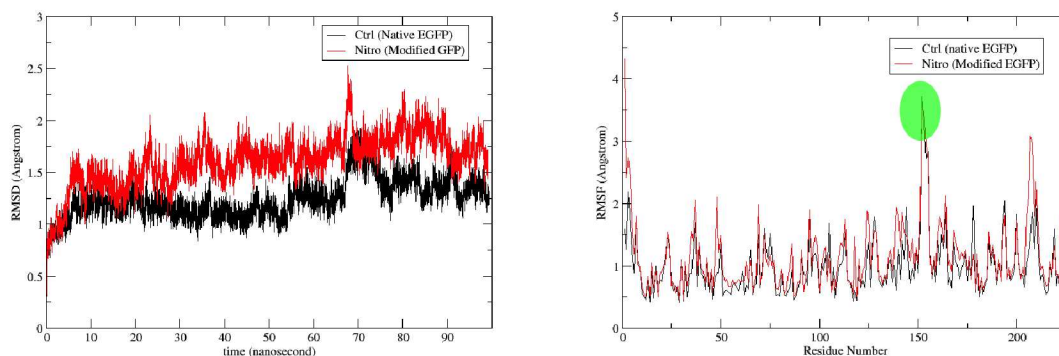
Model	Energy (eV)	OS	TPA (GM)
1a	3.455	0.640	0
2a	3.468	0.679	0
1b	3.473	0.652	0
2b	3.452	0.557	0
3	3.463	0.705	0
4	3.387	0.787	0
5	3.467	0.704	1
6	3.197	0.912	1
7	3.200	0.927	1
8	3.304	0.796	2
9	3.403	0.841	3
10	3.369	0.848	3
11	3.256	0.812	4
12	3.210	0.984	5
13	3.289	0.853	7
14	3.310	0.894	7
15	3.222	0.837	7
16a	3.218	0.577	8
16b	3.260	0.711	7
17	3.284	0.901	8
18	3.137	0.927	9
19	3.138	0.553	11
20	2.689	0.363	15
21	2.985	0.298	17
22	2.965	0.638	29

**Table 1** One-Photon Excitation Energies, OPA oscillator strengths (OS) and TPA Cross-sections for the Transition to  $S_1$  as determined at the B3LYP/6-31G+(d,p) Level of Theory in PCM with parameters for H<sub>2</sub>O.

The nitro-derivative, molecule 22, has both large dipole difference and transition dipole moment which explains the large cross-section obtained via response theory computation.

### 3.2 Protein Stability

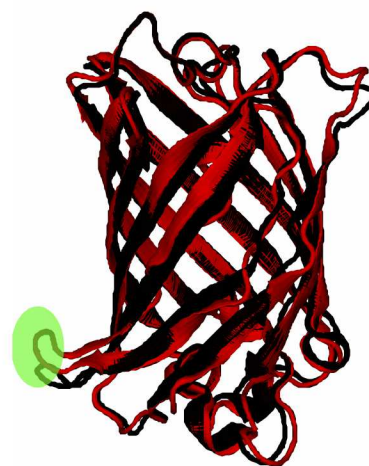
The root-mean-square deviation (RMSD) for the backbone atoms and the root-mean-square fluctuation (RMSF) for the protein residues are shown for the two trajectories in Figure 3. As expected due to the modification introduced to the *nitro* model, its RMSD is larger than the *control*. The RMSD deviation, however, is still within range of the crystal-structure resolution of 1.5 Å. A comparison of the average bond lengths in the chromophores from the MD simulations with the DFT-optimized values, and, for the *control*, those from Xray crystallography show no significant deviations (see Tables S5 and S6 in ESI†). Figure 4 shows a superposition of an average structure for each model generated from the trajectory between 60 and 99 ns. Residue 153 with the largest RMSF is a loop residue outside the  $\beta$ -barrel structure and thus is more



**Fig. 3** The RMSD of the protein in reference to the original minimized structure (left) and the RMSF of the protein residues (right) over the simulation period of 99 ns. Fluctuation for residue 153 is highlighted (see Fig. 4).

Model	$(\Delta\mu_x)^2$	$(\Delta\mu_y)^2$	$\mu_{x01}^2$	$\mu_{y01}^2$	$\sigma_{2LM}$
6	0.0	0.1	9.8	0.1	1
7	0.1	0.1	9.9	0.1	1
12	0.6	0.0	10.5	0.0	5
13	0.8	0.0	8.7	0.0	6
14	0.8	0.0	9.3	0.1	6
16a	5.2	0.0	5.0	0.2	22
18	1.2	0.0	9.6	0.0	10
19	8.8	0.1	4.0	0.1	31
20	10.6	0.7	3.8	0.1	34
22	7.0	0.0	7.6	0.0	46

**Table 2** The (non-zero) dipole elements (in atomic units squared) of the 2-state model computed at the B3LYP/6-31G+(d,p) level in the gas phase.  $\Delta\mu_\alpha$  is the  $\alpha$ -component of the difference between the permanent dipole moment of the first excited and the ground states, i.e.,  $\langle 1|\mu_\alpha|1\rangle - \langle 0|\mu_\alpha|0\rangle$ .  $\mu_{\alpha 01}$  is the  $\alpha$ -component of the transition dipole moment for the transition from the ground state to the first excited state.  $(\Delta\mu_z)^2$  and  $\mu_{z01}^2$  are zero (0.0) for all models.  $\sigma_{2LM}$  is the TPA cross-section determined via the 2LM directly from the corresponding elements for each chromophore.

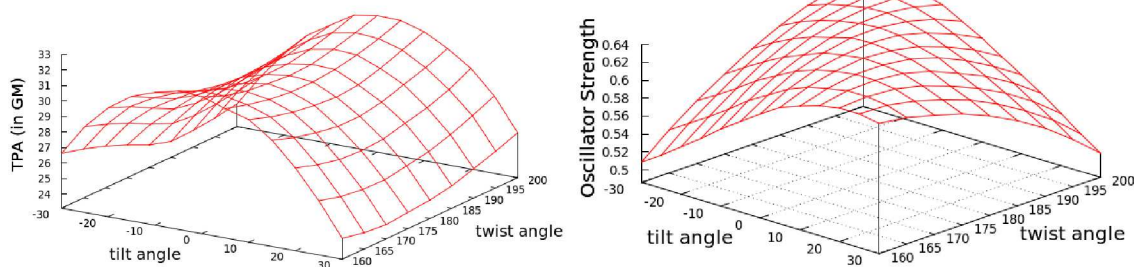


**Fig. 4** An overlay of average structures of *nitro* (red) and *control* (black) models generated from the interval between 60 and 99 ns. Residue 153 (highlighted green) is the non-terminus residue with the largest RMSF fluctuations.

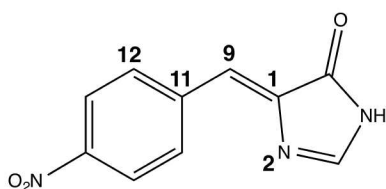
flexible than the residues composing the  $\beta$ -sheets (see Fig. 4). In addition to the duly conserved 3D structure in the modified model of the protein, the unique neutral form of the nitro chromophore should make it, in principal, less sensitive to changes in the surrounding micro-environment.

### 3.3 Conformational Analysis of The Chromophore

We monitored the conformational flexibility of the chromophore using three characteristic angles: the angle corresponding to the methine bridge, as well as the tilting and the twisting angles of the nitro-benzylidene moiety with respect to the imidazolinone ring (see Figure 5). The three angles were



**Fig. 6** The variation of TPA cross-section (left) and OPA oscillator strength (right) with the tilt and twist angles while fixing the methine bridge at  $134^\circ$  (see Figure 5 for the definition of the angles). The tabulated values are given in Table S9 in the ESI†



**Fig. 5** The *nitro* chromophore model showing the three angles monitored in the conformational study: the methine bridge is the angle between atoms 11 - 9 - 1, the tilt angle is the dihedral between atoms 11 - 9 - 1 - 2 and the twist is the dihedral between atoms 12 - 11 - 9 - 1. The full z-matrix is given in Table S8 in the ESI†.

recorded for 49511 snapshots over the course of 99 ns. The minimum, maximum and average values for these angles are shown in Table 3. The methine bridge shows the least flexi-

	Methine Bridge	tilt	twist
minimum	$123^\circ$	$-49^\circ$	$152^\circ$
maximum	$145^\circ$	$60^\circ$	$207^\circ$
average	$134^\circ$	$-6^\circ$	$178^\circ$

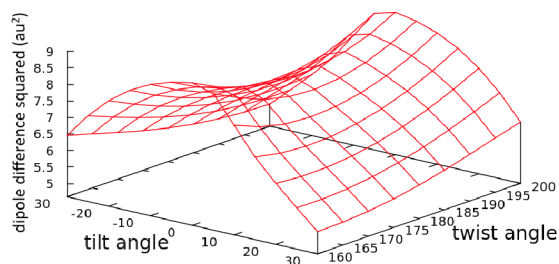
**Table 3** Minimum, maximum and average values for the three angles defined in Figure 5 determined from 49511 snapshots of the full simulation trajectory.

bility with more than 14% of the snapshots having the average angle of  $134^\circ$  and 95% of the snapshots having an angle within  $129^\circ$  and  $139^\circ$ . The twisting and tilting angles show more flexibility where 6.5% and less than 3.5% snapshots have the average angles for each, respectively. In 95% of the snapshots, the twist angle ranges from  $160^\circ$  to  $200^\circ$  and the tilt angle ranges from  $-30^\circ$  to  $30^\circ$ . Hence, we generated 117 conformers by varying the twist and tilt angles by  $5^\circ$  within these ranges and fixing the methine bridge at the average angle of  $134^\circ$ . For each conformer, we computed the first excitation energy, OPA

and TPA at the same level of theory used in screening the chromophore models, that is, TD-B3LYP/6-31+(d,p) in PCM with parameters for  $\text{H}_2\text{O}$ . The trends for the TPA cross-section and OPA oscillator strength are illustrated in Figure 6.

The trend in the excitation energy is similar to that for the TPA cross-section. Nevertheless, the TPA trend is *not* driven by the change in energy, as the largest energy difference in the set of conformers is less than 0.1 eV (Fig. S1, ESI†). Further, the same TPA trend is generated even if the same excitation energy is used to calculate the TPA cross-section for all conformers. For the OPA oscillator strength, a uniform parabola can be noticed when the tilt angle is fixed to the planar value,  $0^\circ$ , and the twist is varied, or the twist is fixed to  $180^\circ$  and the tilt is varied. In such cases, the oscillator strength decreases upon deviation from planarity. The decrease is the same whether the tilt or the twist is varied. As the fixed angle deviates from the planar value, the curve is skewed. On the other hand, the TPA cross-section increases when the twist angle deviates from  $180^\circ$  and decreases when the tilt angle deviates from a planar or near-planar value. The TPA value is significantly more sensitive to the tilt angle than it is to the twist angle. To further investigate the reason for such trends in the TPA cross-sections, we computed the difference between the first excited state permanent dipole moment and the ground state dipole moment for each conformer ( $\langle 1|\mu|1\rangle - \langle 0|\mu|0\rangle$ ) at the TD-B3LYP/6-31G+(d,p) level of theory in the gas phase. The square of the x-components of the dipole difference are plotted in Figure 7. The resemblance in trend and the magnitude of the difference as the tilt and twist angles change strongly confirm that the TPA cross-section variation is driven by the difference between permanent dipoles. These results could further guide the protein engineering of the chromophore cavity to optimize its TPA, where a (near) planar value is needed for the tilt angle and deviation of the twist angle from planarity is desirable.





**Fig. 7** The effect of changing the tilt and twist angles while fixing the methine bridge at  $134^\circ$  (see Figure 5) on the square of the difference between the x-components of the permanent dipoles of the first excited and the ground states ( $\langle 1|\mu_x|1\rangle - \langle 0|\mu_x|0\rangle$ ) of the nitro chromophore (model 20) computed at the TD-B3LYP/6-31G+(d,p) level of theory in the gas phase. The tabulated values are given in Table S9 in the ESI†.

## 4 Conclusion

A group of 22 proposed FP chromophore models derived from ncAAs are screened for their TPA cross-sections. TD-DFT employing the B3LYP functional was used in the screening. Most of the studied molecules exhibited poor intrinsic TPA cross-sections similar to the naturally occurring GFP-derived chromophore models. Molecules with multiple rings, as expected due to the extended conjugation, showed relatively large TPA cross-sections. The chromophore with the largest cross-section, however, was the one derived from a nitro-based ncAA. Two-state model analysis suggests that the increase in TPA is due to both its large transition dipole moment ( $\langle 0|\mu|1\rangle$ ) and the significant difference between the permanent dipole moments of its first excited and ground state ( $\langle 1|\mu|1\rangle - \langle 0|\mu|0\rangle$ ).

To investigate this model further, MD simulations were run on both a native EGFP (*control*) and a nitro-derived EGFP (*nitro*). Comparison with the *control* showed that the protein was stable after the replacement of the hydroxyl group with the nitro substituent. A conformational analysis was then performed to study the change of TPA with a range of the conformations visited by the chromophore in the protein cavity. Results show that a large TPA cross-section (24–32 GM) is maintained through the various conformations and that the TPA fluctuation is, again, driven by the change in the difference between the permanent dipole moments of its first excited state and its ground state ( $\langle 1|\mu|1\rangle - \langle 0|\mu|0\rangle$ ).

In this proposed model, we accounted for two degrees of complexity, that is, the nature of the chromophore and the effect of the protein environment on the chromophore conformation. There still remains the consideration of the chromophore-protein interactions and the electric field due

to the protein shell; both can affect the TPA cross-section. The sensitivity to the surrounding electrostatic environment of the chromophore is due to the dependence of the TPA cross-section on  $\langle 1|\mu|1\rangle - \langle 0|\mu|0\rangle$ . The red FPs share the same chromophore that has an intrinsic TPA cross-section of about 5 GM, as computed previously at the same level of theory used in the present work (TD-B3LYP/6-31+G(d,p)).<sup>22</sup> However, due to the protein shell, some red FP proteins reach an experimental TPA cross-section of 139 GM;<sup>14</sup> a 27-fold amplification. This amplification has been attributed to the sensitivity of the difference between permanent dipoles ( $\langle 1|\mu|1\rangle - \langle 0|\mu|0\rangle$ ) to the electric field of the protein.<sup>14</sup> The *nitro* model, having most of its TPA driven by a large difference between permanent dipoles, seems to be a promising FP target especially if properly engineered to amplify its large intrinsic cross-section.

## 5 Acknowledgements

This work was supported by the Natural Sciences and Engineering Council of Canada (NSERC Discovery Grant to A.B.). This research was enabled in part by support provided by Westgrid (www.westgrid.ca) and Compute/Calcul Canada (www.computecanada.ca).

## References

- O. Shimomura, F. H. Johnson and Y. Saiga, *J. Cell. Comp. Physiol.*, 1962, **59**, 223–229.
- D. C. Prasher, V. K. Eckenrode, W. W. Ward, F. G. Prendergast and M. J. Cormier, *Gene*, 1992, **111**, 229–233.
- M. Chalfie, Y. Tu, G. Euskirchen, W. W. Ward and D. Prasher, *Science*, 1994, **263**, 802–805.
- S. Inouye and F. I. Tsuji, *FEBS Lett.*, 1994, **341**, 277–280.
- M. Ormo, A. B. Cubitt, K. Kallio, L. A. Gross, R. Y. Tsien and S. Remington, *Science*, 1996, **273**, 1392–1395.
- F. Yang, L. G. Moss and G. Phillips, *Nat. Biotechnol.*, 1996, **14**, 1246–1251.
- R. M. Wachter, M. A. Elsliger, K. Kallio, G. T. Hanson and S. J. Remington, *Structure*, 1998, **6**, 1267–1277.
- R. Nifosi and V. Tozzini, *Fluorescent Proteins I*, Springer Berlin Heidelberg, 2012, vol. 11, pp. 3–40.
- N. C. Shaner, P. A. Steinbach and R. Y. Tsien, *Nat. Methods*, 2005, **2**, 905–909.
- R. Weissleder, *Nat. Biotechnol.*, 2001, **19**, 316–317.
- C. Xu, W. Zipfel, J. B. Shear, R. M. Williams and W. W. Webb, *Proc. Natl. Acad. Sci. U.S.A.*, 1996, **93**, 10763–10768.
- W. R. Zipfel, R. M. Williams and W. W. Webb, *Nat. Biotechnol.*, 2003, **21**, 1369–1377.
- N. C. Shaner, R. E. Campbell, P. A. Steinbach, B. N. G. Giepmans, A. E. Palmer and R. Y. Tsien, *Nat. Biotechnol.*, 2004, **22**, 1567–1572.
- M. Drobizhev, N. S. Makarov, S. E. Tillo, T. E. Hughes and A. Rebane, *Nat. Methods*, 2011, **8**, 393–399.
- D. Oulianov, I. Tomov, A. Dvornikov and P. Rentzepis, *Opt. Comm.*, 2001, **191**, 235–243.
- Y. Ai, G. Tian and Y. Luo, *Mol. Phys.*, 2013, **111**, 1316–1321.
- E. Kamarchik and A. I. Krylov, *J. Phys. Chem. Lett.*, 2011, **2**, 488–492.

- 18 M. Drobizhev, N. S. Makarov, S. E. Tillo, T. E. Hughes and A. Rebane, *J. Phys. Chem. B*, 2012, **116**, 1736–1744.
- 19 N. H. List, J. M. H. Olsen, H. J. A. Jensen, A. H. Steindal and J. Kongsted, *J. Phys. Chem. Lett.*, 2012, **3**, 3513–3521.
- 20 R. Nifosi and Y. Luo, *J. Phys. Chem. B*, 2007, **111**, 14043–14050.
- 21 M. Drobizhev, N. S. Makarov, T. Hughes and A. Rebane, *J. Phys. Chem. B*, 2007, **111**, 14051–14054.
- 22 M. A. Salem and A. Brown, *J. Chem. Theory Comput.*, 2014, **10**, 3260–3269.
- 23 L. A. Gross, G. S. Baird, R. C. Hoffman, K. K. Baldrige and R. Y. Tsien, *Proc. Natl. Acad. Sci. U.S.A.*, 2000, **97**, 11990–11995.
- 24 A. H. Steindal, J. M. H. Olsen, K. Ruud, L. Frediani and J. Kongsted, *Phys. Chem. Chem. Phys.*, 2012, **14**, 5440–5451.
- 25 M. T. P. Beerepoot, D. H. Friese and K. Ruud, *Phys. Chem. Chem. Phys.*, 2014, **16**, 5958–5964.
- 26 J. F. Stanton and R. J. Bartlett, *J. Chem. Phys.*, 1993, **98**, 7029–7039.
- 27 R. J. Bartlett, *Mol Phys.*, 2010, **108**, 2905–2920.
- 28 K. D. Nanda and A. I. Krylov, *J. Chem. Phys.*, 2015, **142**, 064118.
- 29 N. Budisa, *Angew. Chem., Int. Ed.*, 2004, **43**, 6426–6463.
- 30 C. C. Liu and P. G. Schultz, *Ann. Rev. Biochem.*, 2010, **79**, 413–444.
- 31 J. A. Johnson, Y. Y. Lu, J. A. V. Deventer and D. A. Tirrell, *Curr. Op. Chem. Biol.*, 2010, **14**, 774–780.
- 32 M. G. Hoessl and N. Budisa, *Curr. Op. Biotechnol.*, 2012, **23**, 751–757.
- 33 R. B. Quast, D. Mrusek, C. Hoffmeister, A. Sonnabend and S. Kubick, *FEBS Lett.*, 2015, **589**, 1703–1712.
- 34 M. Taki, T. Hohsaka, H. Murakami, K. Taira and M. Sisido, *FEBS Lett.*, 2001, **507**, 35–38.
- 35 L. Wang, J. Xie, A. A. Deniz and P. G. Schultz, *J. Org. Chem.*, 2003, **68**, 174–176.
- 36 J. H. Bae, M. Rubini, G. Jung, G. Wiegand, M. H. Seifert, M. Azim, J.-S. Kim, A. Zumbusch, T. A. Holak, L. Moroder, R. Huber and N. Budisa, *J. Mol. Biol.*, 2003, **328**, 1071–1081.
- 37 P. P. Pal, J. H. Bae, M. K. Azim, P. Hess, R. Friedrich, R. Huber, L. Moroder and N. Budisa, *Biochem.*, 2005, **44**, 3663–3672.
- 38 D. Kajihara, T. Hohsaka and M. Sisido, *Protein Eng. Des. Sel.*, 2005, **18**, 273–278.
- 39 A. Goulding, S. Shrestha, K. Dria, E. Hunt and S. K. Deo, *Protein Eng. Des. Sel.*, 2008, **21**, 101–106.
- 40 F. Wang, W. Niu, J. Guo and P. G. Schultz, *Angew. Chem., Int. Ed.*, 2012, **51**, 10132–10135.
- 41 M. S. Padilla and D. D. Young, *Bioorg. Medicinal Chem. Lett.*, 2015, **25**, 470–473.
- 42 S. Chen, Z.-J. Chen, W. Ren and H.-W. Ai, *J. Am. Chem. Soc.*, 2012, **134**, 9589–9592.
- 43 S. M. Kuhn, M. Rubini, M. A. Müller and A. Skerra, *J. Am. Chem. Soc.*, 2011, **133**, 3708–3711.
- 44 J. P. Perdew, K. Burke and M. Ernzerhoff, *Phys. Rev. Lett.*, 1996, **77**, 3865–3868 [Erratum] *Phys. Rev. Lett.* **1996**, **78**, 1396.
- 45 C. Adamo and V. Barone, *J. Chem. Phys.*, 1999, **110**, 6158–6169.
- 46 E. Runge and E. K. U. Gross, *Phys. Rev. Lett.*, 1984, **52**, 997–1000.
- 47 A. D. Becke, *J. Chem. Phys.*, 1993, **98**, 5648–5652.
- 48 V. Barone and M. Cossi, *J. Phys. Chem. A*, 1998, **102**, 1995–2001.
- 49 M. Cossi, N. Rega, G. Scalmani and V. Barone, *J. Comput. Chem.*, 2003, **24**, 669–681.
- 50 J. Tomasi, B. Mennucci and R. Cammi, *Chem. Rev.*, 2005, **105**, 2999–3094.
- 51 M. Cossi and V. Barone, *J. Chem. Phys.*, 2001, **115**, 4708–4717.
- 52 R. Ditchfield, W. J. Hehre and J. A. Pople, *J. Chem. Phys.*, 1971, **54**, 724–728.
- 53 W. J. Hehre, R. Ditchfield and J. A. Pople, *J. Chem. Phys.*, 1972, **56**, 2257–2261.
- 54 M. M. Francl, W. J. Pietro, W. J. Hehre, J. S. Binkley, M. S. Gordon, D. J. DeFrees and J. A. Pople, *J. Chem. Phys.*, 1982, **77**, 3654–3665.
- 55 P. Hariharan and J. Pople, *Theor. Chim. Acta*, 1973, **28**, 213–222.
- 56 T. Clark, J. Chandrasekhar, G. W. Spitznagel and P. V. R. Schleyer, *J. Comput. Chem.*, 1983, **4**, 294–301.
- 57 M. E. Casida, *Recent Advances in Density Functional Methods, Part I*, World Scientific, Singapore, 1995, ch. 5, pp. 155–192.
- 58 P. Salek, O. Vahtras, J. Guo, Y. Luo, T. Helgaker and H. Ågren, *Chem. Phys. Lett.*, 2003, **374**, 446–452.
- 59 L. Frediani, Z. Rinkevicius and H. Ågren, *J. Chem. Phys.*, 2005, **122**, 244104.
- 60 S. Tretiak and V. Chernyak, *J. Chem. Phys.*, 2003, **119**, 8809–8823.
- 61 J. Olsen and P. Jørgensen, *J. Chem. Phys.*, 1985, **82**, 3235–3264.
- 62 "Dalton, a molecular electronic structure program, Release DALTON2013.2, see "http://www.daltonprogram.org".
- 63 M. W. Schmidt, K. K. Baldrige, J. A. Boatz, S. T. Elbert, M. S. Gordon, J. H. Jensen, S. Koseki, N. Matsunaga, K. A. Nguyen, S. J. Su, T. L. Windus, M. Dupuis and J. A. Montgomery, *J. Comput. Chem.*, 1993, **14**, 1347–1363.
- 64 P. Cronstrand, Y. Luo and H. Ågren, *Adv. Quantum Chem.*, 2005, **50**, 1.
- 65 M. T. P. Beerepoot, D. H. Friese, N. H. List, J. Kongsted and K. Ruud, *Phys. Chem. Chem. Phys.*, 2015, **17**, 19306–19314.
- 66 J. Word, S. C. Lovell, J. S. Richardson and D. C. Richardson, *J. Mol. Biol.*, 1999, **285**, 1735–1747.
- 67 W. D. Cornell, P. Cieplak, C. I. Bayly, I. R. Gould, K. M. Merz, D. M. Ferguson, D. C. Spellmeyer, T. Fox, J. W. Caldwell and P. A. Kollman, *J. Am. Chem. Soc.*, 1995, **117**, 5179–5197.
- 68 V. Hornak, R. Abel, A. Okur, B. Strockbine, A. Roitberg and C. Simmerling, *Proteins: Structure, Function, and Bioinformatics*, 2006, **65**, 712–725.
- 69 N. Reuter, H. Lin and W. Thiel, *J. Phys. Chem. B*, 2002, **106**, 6310–6321.
- 70 J. Wang, W. Wang, P. A. Kollman and D. A. Case, *J. Mol. Graphics Modell.*, 2006, **25**, 247–260.
- 71 J. Wang, R. M. Wolf, J. W. Caldwell, P. A. Kollman and D. A. Case, *J. Comput. Chem.*, 2004, **25**, 1157–1174.
- 72 E. Vanqualef, S. Simon, G. Marquant, E. Garcia, G. Klimerak, J. C. Delepine, P. Cieplak and F.-Y. Dupradeau, *Nucleic Acids Research*, 2011, **39**, W511–W517.
- 73 D. Case, T. Darden, T. Cheatham III, C. Simmerling, J. Wang, R. Duke, R. Luo, R. Walker, W. Zhang, K. Merz, B. Roberts, S. Hayik, A. Roitberg, G. Seabra, J. Swails, A. Goetz, I. Kolossváry, K. Wong, F. Paesani, J. Vanicek, R. Wolf, J. Liu, X. Wu, S. Brozell, T. Steinbrecher, H. Gohlke, Q. Cai, X. Ye, J. Wang, M. Hsieh, G. Cui, D. Roe, D. Mathews, M. Seetin, R. Salomon-Ferrer, C. Sagui, V. Babin, T. Luchko, S. Gusarov, A. Kovalenko and P. Kollman, *AMBER 12*, 2012, University of California, San Francisco.
- 74 D. R. Roe and T. E. Cheatham, *J. Chem. Theory Comput.*, 2013, **9**, 3084–3095.
- 75 R. M. Wachter, B. a. King, R. Heim, K. Kallio, R. Y. Tsien, S. G. Boxer and S. J. Remington, *Biochemistry*, 1997, **36**, 9759–9765.
- 76 R. Heim, D. C. Prasher and R. Y. Tsien, *Proc. Natl. Acad. Sci. U.S.A.*, 1994, **91**, 12501–12504.