

PCCP

Accepted Manuscript



This is an *Accepted Manuscript*, which has been through the Royal Society of Chemistry peer review process and has been accepted for publication.

Accepted Manuscripts are published online shortly after acceptance, before technical editing, formatting and proof reading. Using this free service, authors can make their results available to the community, in citable form, before we publish the edited article. We will replace this *Accepted Manuscript* with the edited and formatted *Advance Article* as soon as it is available.

You can find more information about *Accepted Manuscripts* in the [Information for Authors](#).

Please note that technical editing may introduce minor changes to the text and/or graphics, which may alter content. The journal's standard [Terms & Conditions](#) and the [Ethical guidelines](#) still apply. In no event shall the Royal Society of Chemistry be held responsible for any errors or omissions in this *Accepted Manuscript* or any consequences arising from the use of any information it contains.



PCCP

ARTICLE

Deformation twinning and the role of amino acids and magnesium in calcite hardness from molecular simulation

A. S. Côté^a, R. Darkins^a and D. M. Duffy^aReceived 00th June 2015,
Accepted 00th July 2015

DOI: 10.1039/x0xx00000x

www.rsc.org/

We employ classical molecular dynamics to calculate elastic properties and to model the nucleation and propagation of deformation twins in calcite, both as a pure crystal and with magnesium and aspartate inclusions. The twinning is induced by applying uniaxial strain to the crystal and relaxing all stress components except the uniaxial component. A detailed analysis of the atomistic processes reveal that the twinning mechanism involves small displacements of the Ca ions and cooperative rotations of the CO₃ ions. The volume of the twinned region expands under increased uniaxial strain via the propagation of steps along the twin boundaries. The energy cost of the twin boundaries is compensated by the reduced hydrostatic stress and strain energy. The presence of biogenic impurities is shown to decrease the strain required to induce twin formation in calcite and, thus, the yield stress. This increased propensity for twinning provides a possible explanation for the increased hardness and penetration resistance observed experimentally in biominerals.

1. Introduction

Biomaterials produced by living organisms exhibit remarkable mechanical properties, rivalling those of engineered ceramics at high temperatures and pressures.¹⁻³ Understanding the mechanisms involved in the superior mechanical properties of biominerals is essential for the design of new materials that reproduce these properties, and has been the aim of several studies over the past few decades.⁴⁻⁷ One of the most widely studied biominerals is calcite, the most stable polymorph of CaCO₃. Apart from being a rock-forming mineral abundant in the Earth's crust, calcite is also biogenic. It often forms part of the skeleton or exoskeleton of invertebrates, where exceptional hardness and toughness are required for protection and support. These mechanical properties are strongly influenced by a range of additives, including inorganic ions and organic macromolecules.⁸⁻¹¹ These composite structures can effectively distribute stress and control crack propagation through the material, achieving the required toughness and penetration resistance.¹²⁻¹⁴ One way that this is achieved is deformation twinning, as was recently shown using nanoindentation on a biomineralised calcite exoskeleton.¹⁵

Deformation twinning is a mechanism which occurs in some crystals when they are subjected to a sufficiently large shear stress. Crystalline twins are characterised by the

formation of a mirror plane which separates the original "parent" and "twinned" regions. The highly co-ordinated atomic movement that leads to the twin boundary formation has been extensively studied for metals and minerals.^{16,17} Twinning has a very important role in a range of physical properties of crystals, as well as growth and phase transformations. It has been shown that, at the nanoscale, twin boundaries increase hardness in the same way as grain boundaries^{18,19} by inhibiting dislocation motion, while gliding of dislocations along densely distributed twin boundaries increases fracture toughness. This was recently exemplified by the creation of nanotwinned diamond with exceptional hardness and thermal stability.²⁰

Most of the computational simulations of twinning have focused on metals; to our knowledge there have been no previous studies that follow the formation and growth of twins in minerals, but only simulations that analyse pre-formed twins.²¹⁻²⁴ In this study we examine twinning in calcite using molecular dynamics. We analyse the formation and development of the twin boundaries that are created by the application of a uniaxial strain and calculate the resulting stress-strain curve. We repeat the simulations in the presence of biogenic impurities known to affect mechanical properties (Mg ions and aspartate),²⁵⁻²⁷ in order to investigate the superior mechanical properties of biogenic calcite.

2. Twinning in calcite

There are four well-identified twin planes in calcite crystals, $e=\{018\}$, $r=\{104\}$, $f=\{012\}$ and $c=\{001\}$, introduced either by

^a University College London, Department of Physics & Astronomy, Gower Street, London WC1E 6BT, United Kingdom

deformation or as defects during crystal growth. *e* and *r* are the most common deformation twinning planes, depicted in Fig. 1. It should also be noted that the *r*-plane is the usual slip plane. The *e*-twin is the one most commonly observed experimentally, and it can be easily introduced by indentation.^{15,28}

Since the late nineteenth century there have been numerous studies on naturally and experimentally deformed calcite, confirming the above twin planes.²⁹⁻³² Other carbonate minerals, such as dolomite $\text{CaMg}(\text{CO}_3)_2$, have also been analysed in terms of their twin structure and necessary shearing directions to produce twins.^{33,34} However, the atomistic mechanism of nucleation and propagation of twin boundaries in calcite has not been studied computationally and this is one of the aims of the current study.

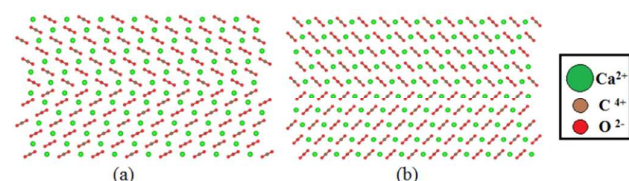


Figure 1. (a) $e=\{018\}$ and (b) $r=\{104\}$ twins viewed along the $\langle 010 \rangle$ direction.

3. Computational method

Molecular dynamics calculations were performed in the DL_POLY Classic code (v. 1.9),³⁵ using a rigid ion version of the interatomic potential by Pavese et al.^{36,37} This potential was found to reproduce the mechanical properties of calcite better than the more recent potential by Raiteri et al.,^{38,39} which is unsurprising since it was specifically fitted to elastic and vibrational data.

The periodic supercell used in the simulations was a $7 \times 4 \times 3$ multiplication of the conventional orthorhombic cell of calcite, containing 1008 CaCO_3 units, and with the *z*-axis corresponding to the *c*-axis of the crystal. The electrostatics were handled by the Ewald summation method and the short-range potentials had a cutoff of 10.1 Å. The simulation timestep was 1 fs, using the Nosé-Hoover thermostat at 300K with a 100 fs relaxation time. The initial system was relaxed to equilibrium using the NoT ensemble with a 1 ps barostat, for a duration of 1 ns.

Small concentrations of impurities were added to the supercell to examine their effect on the elasticity and deformation twinning. We added 5 and 10 mol % Mg in our supercell by random substitution of Ca^{2+} ions, and modelled the Mg interactions with the potential by de Leeuw for MgCO_3 .⁴⁰ We repeated the simulations with 0.4 and 0.8 mol % aspartate (Asp). The zwitterionic form of aspartate (Asp^{1-}) was used ($^+\text{H}_3\text{N}-\text{CH}(\text{CH}_2\text{CO}_2^-)-\text{CO}_2^-$), and its potential was generated with AMBER.⁴¹ The interactions between aspartate and calcite were fitted using the methods described in ref 42. The configuration, in this case, was obtained by using

metadynamics to drive the crystallisation of disordered calcium carbonate that contained the aspartate molecules. The resulting structure is shown in figure 2 where it can be seen that the amino group in the aspartate takes the place of a Ca ion in the calcite lattice, while the two carboxylic acid groups replace two carbonate groups, hence the aspartate fits in the calcite lattice with minimal disruption.

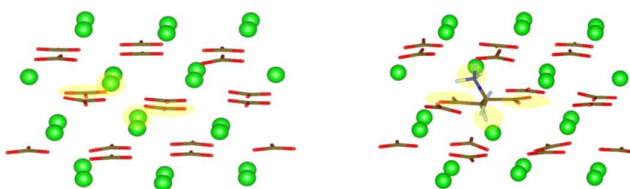


Figure 2. Snapshots before (left) and after (right) the inclusion of Asp in the calcite lattice. The positions of the substituted ions are shaded.

3.1 Elastic properties

We used the small strain method to calculate the six independent elastic constants ($C_{11}, C_{33}, C_{44}, C_{12}, C_{13}, C_{14}$) of calcite, with and without Mg and Asp impurities. Small (up to $\pm 1\%$) tensile, compressive and shear strains were applied to the equilibrium lattice vectors, and the resulting stresses calculated.⁴³ This was repeated for 20 strain increments close to the equilibrium vectors, with each strain direction corresponding to one or more elastic constants. Specifically, given an initial orthorhombic calcite supercell with axes *a*, *b* and *c*, the three matrices chosen to define the axes of the deformed supercell were the following, with an increment $\delta = 0.001 \text{ \AA}$:

$$\begin{pmatrix} (1+\delta)a & 0 & 0 \\ 0 & b & 0 \\ 0 & 0 & c \end{pmatrix}, \begin{pmatrix} a & 0 & 0 \\ 0 & b & 0 \\ 0 & 0 & (1+\delta)c \end{pmatrix}, \text{ and } \begin{pmatrix} a & \delta a & 0 \\ \delta b & b & 0 \\ 0 & 0 & c \end{pmatrix}$$

from which all the elastic constants were obtained.

The elastic constants were extracted by a linear fit to the stress-strain data ($\sigma_i = C_{ij}\epsilon_j$). This is possible because the strain is sufficiently small that the deformation stays in the linear regime. The stresses were calculated by sampling the canonical ensemble for 0.2 ns after each strain increment. The bulk and shear moduli were calculated from the elastic constants using the Voigt-Reuss-Hill averaging scheme.⁴⁴

3.2 Deformation twinning

A similar method was used to deform the supercell along the *z*-direction, i.e. the *c*-axis of the unstrained and relaxed unit cell. The implementation of the NoT ensemble in DL_POLY was modified in order to constrain the deformation in the *z* direction only. All other components of the cell vectors were relaxed to relieve all stress components except σ_z . Thus, in general, all components of the strain vector are finite and all

components of the stress vector are zero except σ_z . We are effectively simulating an experimental setup in which only ε_z is constrained.

The supercell, including the atomic coordinates, was stretched in small incremental steps at a rate of 0.15 m/s, up to ~30% strain. The strain increase at each step was 0.28% and a 100 ps constant strain simulation at 300 K was carried out after each step. The final configurations of these 100 ps simulations were stretched and used as the starting configuration for the next step. The z-component of the stress – the only non-zero component – was calculated after each strain increment by averaging over the final 98 ps of the 100 ps constant strain simulations. The calculated values were used to plot the uniaxial stress-strain curve. The atomistic configuration was also captured after each strain increment and the atomic motion involved in twin formation and growth was studied in detail.

3.3 Calculation of local stress field

In addition to calculating the average uniaxial stress for the simulation cell, we calculated the local hydrostatic stress distribution throughout the cell. This gives information about the stress distribution near the twin boundaries and the stress introduced by the impurities. We also use this to compare the stress distribution in the simulation cell before and after twinning.

A method for calculating stress fields in ionic crystals from molecular dynamics was introduced by Branicio and Srolovitz⁴⁵ and applied by Darkins et al.⁴⁶ The continuous stress field is derived from the time-averaged atomic virials, $\langle W_i^{\alpha\beta} \rangle$, using

$$\Pi^{\alpha\beta}(r) = \sum_{i \in X} P(r - r_i) W_i^{\alpha\beta} \quad (1)$$

where all species X and atoms i are summed, and $P(r)$ is a three-dimensional normalised Gaussian of the form

$$P(r) = \frac{27}{R^3 (2\pi)^{3/2}} \exp(-9r^2/2R^2), \quad (2)$$

where R parametrises the size of the Gaussian and is equivalent to three standard deviations. In our calculations R was set to 4 Å. α and β take on values x, y, z to generate the components of the virial stress tensor. The supercell is divided into a grid, and the hydrostatic stress field $\text{Tr}(\Pi(r))/3$, which is a scalar field equivalent to the negative of the pressure field, is calculated at every grid point using eq. 1. By using a dense grid of 1 Å divisions, we can examine the stress distribution throughout our system, both before and after deformation. The calculations were performed at a very low temperature (10 K) to reduce thermal noise.

4. Results and discussion

4.1 Elastic properties

The calculated elastic constants of calcite, with and without Mg and Asp impurities, are presented in table 1. The calculated values are in good agreement with both the values calculated previously with a different methodology³⁷ and the measured values. These values give us confidence that the potentials we use are appropriate for modelling the mechanical properties of calcite.

The addition of Mg makes calcite stiffer – the 10 mol.% impurity caused a 2% increase in C_{11} . This increase in stiffness is in agreement with studies on dolomite, which has considerably higher elastic moduli compared to calcite.⁴⁷ Asp has the opposite but larger effect, achieving approximately the same change by including only 0.8 mol.% of impurity. As the concentrations used here were small, the symmetry of the elastic matrix remained unaffected.

4.2 Deformation twinning

The calculated stress-strain curve for pure calcite up to a uniaxial strain of 25% is shown in figure 3. The curve is linear up to 2% strain and the gradient gives a tensile modulus of 66.4 ± 0.2 GPa, which is in excellent agreement with the value calculated from the elastic constants in section 4.1 above. The curve is close to linear up to a strain of 10.8%, at which point there is a sharp drop in stress, signalling the formation of a pair of {104} twin boundaries separated by 2-3 atomic layers.

The stress at which the stress-strain curve deviates significantly from linear behaviour, the yield stress, was found to be 7.7 GPa. We note that the calculated yield stress and strain are much higher than would be achieved in a real calcite crystal since, in our model, there are no surfaces, cracks or other flaws that would usually serve as nucleation sites for such failure.

The atomistic configuration of the simulation cell immediately after the formation of the pair of deformation twins is shown in the second snapshot of figure 3. The twinned volume between the two twins is two or three atomic layers thick and has a different crystallographic orientation to the original (parent) crystal. The change in the number of layers is the result of “steps” in each of the twin boundaries. There can be one or more steps in each twin, and their number increases with strain. We repeated this experiment using a simulation cell that was 1.5 times smaller in each direction, and we found that r-twins formed at the same stress/strain values as in the original cell; the only difference was that the twin boundaries spanned the entire cell, contrary to the ones shown in figure 3, which end part way through.

4.3 Twin propagation

The stages of deformation were identified by analysing the trajectories of each simulation. The motion of the twin

	C_{11}	C_{33}	C_{44}	C_{12}	C_{13}	C_{14}	K_{VRH}	G_{VRH}	Y_{zz}
Pure calcite	156.6 (149.4)	92.1 (85.2)	35.1 (34.1)	57.9 (57.9)	52.6 (53.5)	-12.2 (-20.0)	78.4 (76.1)	37.6 (32.8)	66.3 (57.6)
+5% Mg	157.7	92.2	35.2	58.1	52.3	-11.6	78.5	38.2	66.8
+10% Mg	159.8	93.6	35.2	59.3	52.7	-11.3	79.5	38.6	68.2
+0.4% Asp	155.1	90.6	34.3	56.9	52.3	-12.5	77.5	36.9	64.8
+0.8% Asp	152.7	89.4	33.6	55.9	52.0	-12.4	76.6	36.2	63.5

Table 1. Calculated elastic constants of pure calcite and with Mg and Asp impurities. The values in brackets are the experimental values for pure calcite from Chen et al.⁴⁷

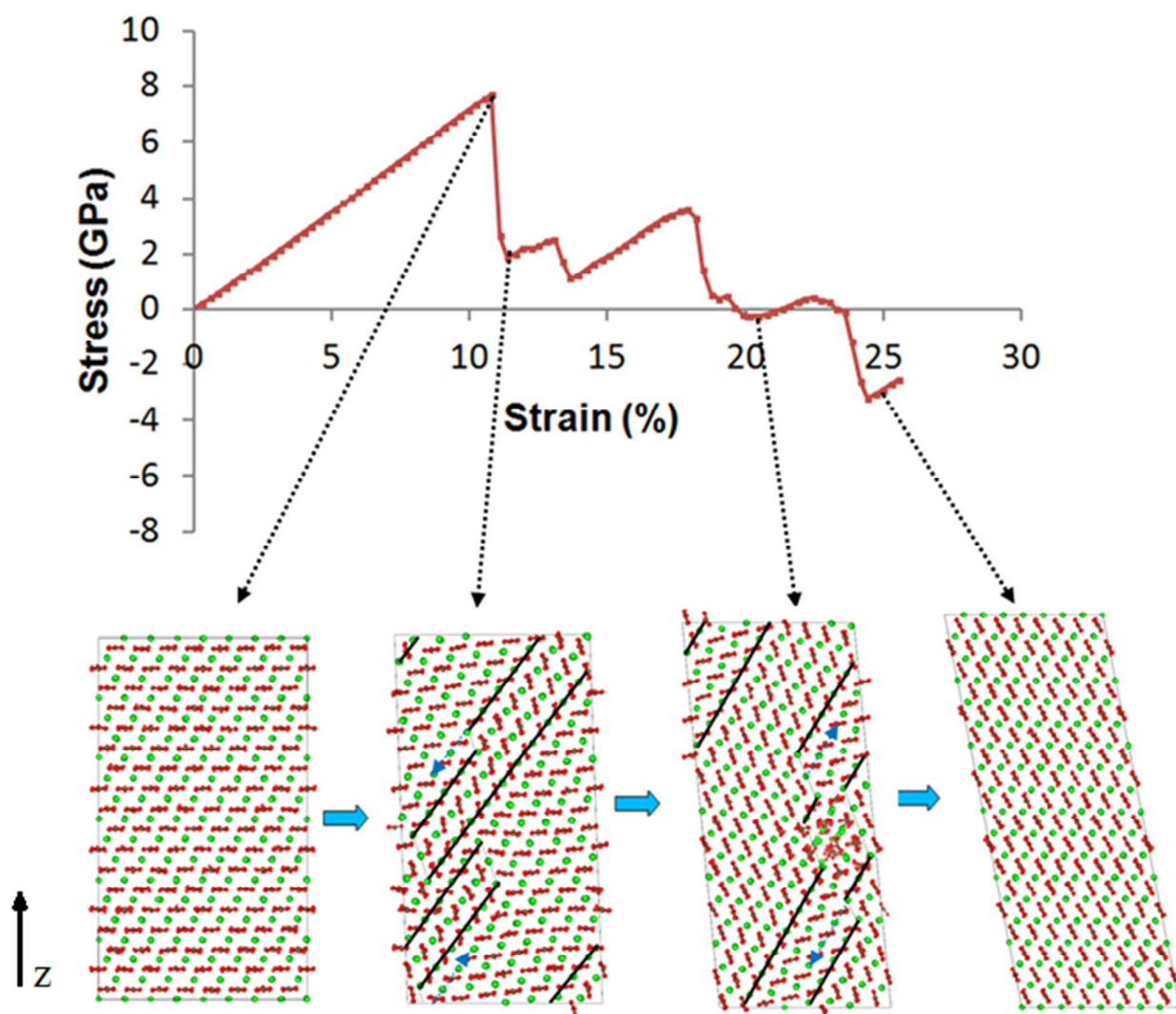


Figure 3. Deformation twinning and widening of the twinned region caused by tensile strain along the z-axis of the calcite supercell. The stress-strain relationship and four configurations are shown between 11% and 25% strain. The final configuration has entirely adopted the crystallographic orientation of the twinned region. The dashed blue arrows show the direction of step propagation, which results in widening of the twinned volume. The thin dashed lines denote the end of the twinned region, as well as the steps in the boundaries.

boundary steps results in widening of the twinned region, with increased tensile strain. As the lattice is strained further, the steps move along the boundary, making the twinned region

wider with respect to the parent region. When the step reaches the end of the twin boundary, a step nucleates on the opposite side of the twinned region and continues to

propagate, further widening the twin region. Steps may also form spontaneously at the end of the twin boundaries. When two steps meet, the two twinned areas join, and in this instance, due to the periodic boundary conditions, the “parent” region is finally consumed and the entire structure adopts the crystallographic orientation of the “twin” region. In the pure calcite lattice this happens at $\sim 25\%$ strain. The α angle of the supercell also gradually changes to accommodate the new periodic structure, from 90° to 101° . Snapshots of the process are illustrated in figure 3, together with the corresponding stress-strain relationship. Whenever the steps move a large distance or annihilate, we notice a corresponding drop in stress. Interestingly, near 25% strain, when the parent regions disappear completely, the structure is in a compressed state (negative stress). The energy cost of the twin boundaries is larger than that of a twin-free lattice with stored elastic energy. Specifically, using the initial unstrained lattice as reference, the energy per unit volume drops from 237 MJ/m^3 to 64 MJ/m^3 , before and after the disappearance of the twins.

We repeated the simulations with low concentrations of Mg (5 mol %) and Asp (0.4 mol %) impurities. The twin boundaries that formed following the initial drop in stress are shown in figure 4.

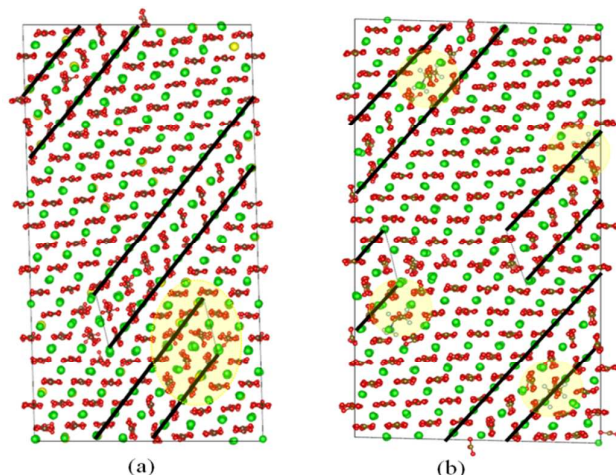


Figure 4. (a) $\{104\}$ twins in calcite with 5 mol % Mg. The shaded regions show the area with the largest Mg^{2+} concentration. The twin nucleates from that area. Mg^{2+} ions are coloured yellow. (b) $\{104\}$ twins with Asp^{1-} ; here the shaded circles mark the position of the Asp^{1-} molecules

In the Mg case, the twin boundaries started forming in the region of the supercell where the Mg concentration was higher than the cell average, around 9% . Similarly, in the simulation with Asp impurities, the twinned region initially formed close to the amino acid molecules. We attribute this to high localised stress fields around the impurities and we discuss this further in section 4.4.

The calculated stress-strain curves for calcite with Mg and Asp impurities are shown in figure 5. The curve for pure calcite is included for comparison. We note that the initial twin formation occurs at lower strain (9.7% for Mg, 9.4% for Asp)

and stress (6.7 GPa for Mg, 6.1 GPa for Asp) values in the presence of impurities. This is an important result as it implies that impurities enhance twin boundary formation and, consequently, reduce the yield stress of calcite.

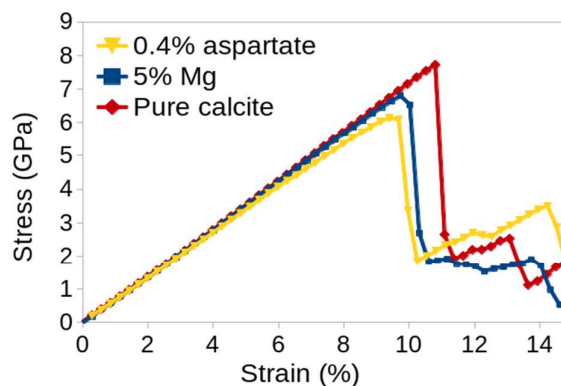


Figure 5. Comparison of the stress-strain relationship between the system with 5% Mg, 0.4% Asp, and the pure calcite system. Twinning occurs at lower stress when impurities are introduced in the calcite lattice.

4.4 Stress field

We calculated the hydrostatic stress fields in our supercells with both Mg and Asp impurity ions. A volumetric representation of the stress field in the 5 mol % Mg supercell, just before and just after the twin boundaries form, are shown in figure 6. As expected, the volume with the highest local stress before deformation is the volume with the largest impurity concentration.

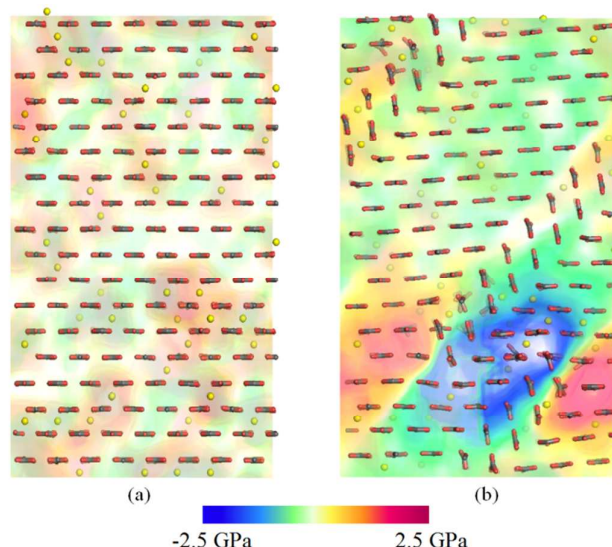


Figure 6. Volume rendering of hydrostatic stress (a) before and (b) after deformation twinning. Calcium ions are not shown for clarity; magnesium ions are shown in yellow. The deformed structure on the right corresponds to Fig. 5(a).

The Mg^{2+} ions, being smaller than the Ca^{2+} ions they substituted, cause a compressive stress around them in the lattice. When there is a high localised impurity concentration, the stress in that volume is higher and the deformation twin nucleates close to that region in order to relieve the stress. The compressive (positive) stress around the Mg^{2+} ions at the moment just before twinning is visible in figure 6. After the twin has formed, the previously-compressed region is now replaced by a pocket of negative stress. The same effect was observed when Asp was the impurity; the twins form near the impurities and act to relieve the local accumulation of stress.

Conclusions

We have used molecular dynamics to calculate the stress-strain curve for calcite and to observe the process of deformation twinning induced by uniaxial strain in the (001) direction. We observe elastic deformation up to a strain of around 10%. We note that this is much higher than would be expected in an experimental sample where grain boundaries and other defects introduce stress concentrations that initiate failure. Our simulations are instead representative of a perfect calcite crystal and provide detailed information about intrinsic deformation mechanisms.

At a strain of 10.8%, and a stress of 7.7 GPa, a pair of {104} twin boundaries form by small displacements of the Ca ions and displacement and cooperative rotation of the CO_3 ions. The twin boundaries are initially separated by two to three crystal layers with a different orientation to the original crystal, with steps in the twin boundaries separating the two- and three-layer regions. As the strain is increased further, the volume of the twinned region expands by propagation of the steps along the boundaries, further reducing the uniaxial stress.

We repeated the simulations with Mg and aspartate impurities, which are additives commonly found in biogenic calcite. The calculated stress-strain curves for the impure calcite crystals were similar to that for pure calcite. However, the initial drop in stress, corresponding to the formation of the pair of twin boundaries, occurred at significantly lower strains and stresses (9.7% and 6.7 GPa for Mg and 9.4% and 6.1 GPa for Asp). The twin boundaries formed initially close to the regions with the highest impurity concentration and analysis of the local stress distribution around the impurities before and after twin formation showed that twin formation affects the local stress associated with the defects.

The fact that impurities enhance deformation twinning may explain the enhanced hardness and penetration resistance of biogenic calcite in nanoindentation experiments.^{15,48} The inclusion of impurity ions, amino acids and proteins will result in a higher density of twin boundaries in response to the application of stress. The twin boundaries, in turn, will inhibit dislocation motion and nano-crack propagation, increasing both hardness and penetration resistance. Deformation twinning may therefore prove to be a key mechanism in the effort to engineer biomimetic minerals with superior mechanical properties.

In summary, we have used molecular dynamics to investigate the response of calcite to uniaxial strain, with and without added impurities. We have found that plastic deformation occurs via the formation of pairs of {104} twin boundaries and proceeds via the motion of steps along these boundaries. Added impurities reduce the stress and strain required for twin formation, which may contribute to the enhanced hardness of biogenic calcite.

Acknowledgements

This work was supported by the Engineering and Physical Sciences Research Council (grant no. EP/I001514/1). This programme grant funds the Materials Interface with Biology (MiB) consortium. R.D. acknowledges funding from the EPSRC under the Molecular Modelling and Materials Science Industrial Doctorate Centre and from the Pacific Northwestern National Laboratory.

Notes and references

- 1 S. Mann, Biomineralization: the form(id)able part of bioinorganic chemistry! , *J. Chem. Soc., Dalton Trans.*, 1997, 3953-3962.
- 2 S. Weiner, P.M. Dove, An overview of biomineralization processes and the problem of vital effect., *Rev. Mineral. Geochem.*, **54**, 2003, 1-31.
- 3 E. Beniash, Biominerals--hierarchical nanocomposites: the example of bone, *Wiley Interdiscip. Rev. Nanomed. Nanobiotechnol.* **3**, 2011, 47-69.
- 4 M. Sarikaya, Biomimetics: Materials fabrication through biology, *Proc. Nat. Acad. Sci.*, **96**, 1999, 14183-14185.
- 5 P. Fratzl, Biomimetic materials research: what can we really learn from nature's structural materials?, *J. R. Soc. Interface* **4**, 2007, 637-642.
- 6 A.K. Nair, F. Libonati, Z. Qin, L.S. Dimasand, M.J. Buehler, Mechanical and interface properties of biominerals: Atomistic to coarse grain modeling., in: L. Gower (Ed.), *Biomineralization Sourcebook*, CRC Press, 2014, pp. 337-351.
- 7 O.S. Bello, K.A. Adegoke, R.O. Oyewole, Biomimetic materials in our world: A review., *IOSR J. Appl. Chem.*, **5**, 2013, 22-35.
- 8 J. Aizenberg, S. Weiner, L. Addadi, Coexistence of amorphous and crystalline calcium carbonate in skeletal tissues., *Connect. Tissue Res.* **44**, 2003, 20-25.
- 9 F.C. Meldrum, Calcium carbonate in biomineralisation and biomimetic chemistry., *Int. Mater. Rev.* **48**, 2003, 187-224.
- 10 F.C. Meldrum, H. Cölfen, Controlling mineral morphologies and structures in biological and synthetic systems, *Chem. Rev.*, **108**, 2008, 4332.
- 11 N.A.J.M. Sommerdijk, G. de With, Biomimetic CaCO_3 mineralization using designer molecules and interfaces, *Chem. Rev.*, **108**, 2008, 4499-4550.
- 12 F. Barthelet, Biomimetics for next generation materials., *Phil. Trans. R. Soc. A.*, **365**, 2007, 2907-2919.
- 13 P. Fratzl, R. Weinkamer, Nature's hierarchical materials., *Prog. Mater. Sci.*, **52**, 2007, 1263-1334.
- 14 C. Li, D.L. Kaplan, Biomimetic composites via molecular scale self-assembly and biomineralization, *Curr. Opin. Solid State Mater. Sci.*, **7**, 2003, 265-271.

- 15 L. Li, C. Ortiz, Pervasive nanoscale deformation twinning as a catalyst for efficient energy dissipation in a bioceramic armour, *Nature*, **13**, 2014, 1-7.
- 16 J.W. Christian, S. Mahajan, Deformation twinning, *Progress in Materials Science*, **39**, 2000, 1-157
- 17 Y.T. Zhu, X.Z. Liao, X.L. Wu, Deformation twinning in nanocrystalline materials, *Progress in Materials Science*, **57**, 2012, 1-62.
- 18 D. Wolf, V. Yamakov, S.R. Phillpot, A. Mukherjee, H. Gleiter, Deformation of nanocrystalline materials by molecular-dynamics simulation: relationship to experiments?, *Acta Materialia*, **53**, 2005, 1-40.
- 19 T. Zhu, H. Gao, Plastic deformation mechanism in nanotwinned metals: An insight from molecular dynamics and mechanistic modeling., *Scripta Materialia* **66**, 2012, 843-848.
- 20 Q. Huang, D. Yu, B. Xu, W. Hu, Y. Ma, Y. Wang, Z. Zhao, B. Wen, J. He, Z. Liu, Y. Tian, Nanotwinned diamond with unprecedented hardness and stability, *Nature*, **510**, 2014, 250-253.
- 21 M. Bruno, F.R. Massaro, M. Rubbo, M. Prencipe, D. Aquilano, (10.4), (01.8), (01.2), and (00.1) Twin Laws of Calcite (CaCO₃): Equilibrium Geometry of the Twin Boundary Interfaces and Twinning Energy, *Cryst. Growth Des.*, **10**, 2010, 3102-3109.
- 22 A. Toru, N. Kohji, I. Tomonori, Effects of Atomic Arrangements on Structural Stability and Electronic Structures of Twin Boundary Interfaces in CaCO₃ Calcite, *J. Phys. Chem C*, **116**, 2012, 987-993.
- 23 D. Aquilano, M. Bruno, M. Rubbo, P. L., F.R. Massaro, Twin Laws and Energy in Monoclinic Hydroxyapatite, Ca₅(PO₄)₃(OH), *Cryst. Growth Des.*, **15**, 2015, 411-418.
- 24 B. Li, K.M. Knowles, Molecular dynamics simulation of albite twinning and pericline twinning in low albite, *Modelling Simul. Mater. Sci. Eng.* **21**, 2013, 05501.
- 25 A.J. Andersson, F.T. Mackenzie, N.R. Bates, Life on the margin: implications of ocean acidification on Mg-calcite, high latitude and cold-water marine calcifiers., *Marine Ecology Progress Series*, **22**, 2008, 4216.
- 26 S. Borukhin, L. Bloch, T. Radlauer, A.H. Hill, A.N. Fitch, B. Pokroy, Screening the incorporation of amino acids into an inorganic crystalline host: The case of calcite, *Adv. Funct. Mater.* **22**, 2012, 4216.
- 27 W.-T. Hou, Q.-L. Feng, Morphologies and Growth Model of Biomimetic Fabricated Calcite Crystals Using Amino Acids and Insoluble Matrix Membranes of *Mytilus edulis*, *Crystall Growth & Design*, **6**, 2006, 1086-1090.
- 28 K. Chen, M. Kunz, N. Tamura, H.-R. Wenk, Deformation twinning and residual stress in calcite studied with synchrotron polychromatic X-ray microdiffraction, *Phys Chem Minerals*, **38**, 2011, 491-500.
- 29 F.J. Turner, Nature and dynamic interpretation of deformation lamellae in calcite of three marbles, *Am. J. Sci.* **251**, 1953, 276-298.
- 30 M. Burkhard, Calcite twins, their geometry, appearance and significance as stress-strain markers and indicators of tectonic regime: a review, *J. Struct. Geol.*, **15**, 1993, 351-368.
- 31 J.H.P. De Bresser, C.J. Spiers, High temperature deformation of calcite single crystals by r+ and f + slip, in *Deformation Mechanisms, Rheology and Tectonics*, *Geol. Soc. London Spec.*, **54**, 1990, 285-298.
- 32 B. Pokroy, M. Kapon, F. Marin, N. Adir, E. Zolotoyabko, Protein-induced, previously unidentified twin form of calcite, *Proc. Nat. Acad. Sci.* **104**, 2007, 7337-7341.
- 33 W.F. Bradley, J.F. Burst, D.L. Graf, Crystal chemistry and differential thermal effects of dolomite, *Am. Mineralogist*, **38**, 1953, 207-217.
- 34 D.J. Barber, H.R. Wenk, Deformation twinning in calcite, dolomite, and other rhombohedral carbonates., *Phys. Chem. Mineral.*, **5**, 1979, 141-165.
- 35 I.T. Todorov, W. Smith, K. Trachenko, M.T. Dove, DL_POLY_3: new dimensions in molecular dynamics simulations via massive parallelism, *J. Mater. Chem.* **16**, 2006, 1911-1918.
- 36 A. Pavese, M. Catti, G.D. Price, R. Jackson, Interatomic potentials for CaCO₃ polymorphs (calcite and aragonite), fitted to elastic and vibrational data, *Physics and Chemistry of Minerals* **19**, 1992, 80-87.
- 37 A. Pavese, M. Catti, S.C. Parker, A. Wall, Modelling of the thermal dependence of structural and elastic properties of calcite CaCO₃, *Physics and Chemistry of Minerals*, **23**, 1996, 89-93.
- 38 P. Raiteri, J.D. Gale, D. Quigley, P.M. Rodger, Derivation of an accurate force-field for simulating the growth of calcium carbonate from aqueous solution: a new model for the calcite-water interface, *J. Phys. Chem. C.*, **114**, 2010, 5997-6010.
- 39 P. Raiteri, J.D. Gale, Water Is the Key to Nonclassical Nucleation of Amorphous Calcium Carbonate, *Journal of the American Chemical Society*, **132**, 2010, 17623-17634.
- 40 N.H. De Leeuw, Molecular dynamics simulations of the growth inhibiting effect of Fe²⁺, Mg²⁺, Cd²⁺, and Sr²⁺ on calcite crystal growth, *J. Phys. Chem B*, **106**, 2002, 5241-5249.
- 41 W.D. Cornell, P. Cieplak, C.I. Bayly, I.R. Gould, K.M.J. Merz, D.M. Ferguson, D.C. Spellmeyer, T. Fox, J.W. Caldwell, P.A. Kollman, A Second Generation Force Field for the Simulation of Proteins, Nucleic Acids, and Organic Molecules, *J. Am. Chem. Soc.* **117**, 1995, 5179-5197.
- 42 C.L. Freeman, J.H. Harding, D.J. Cooke, J.A. Elliott, J.S. Lardge, D.M. Duffy, New Forcefields for Modeling Biomineralization Processes, *J. Phys. Chem. C.*, **111**, 2007, 11943-11951.
- 43 A.M. Walker, The effect of pressure on the elastic properties and seismic anisotropy of diopside and jadeite from atomic scale simulation, *Phys. Earth. Planet. Inter.* **192**, 2012, 81-89.
- 44 R. Hill, The elastic behaviour of a crystalline aggregate, *Proc. Phys. Soc. London, Sect. A*, **65**, 1952, 349-354.
- 45 P. S. Branicio and D. J. Srolovitz, Local stress calculation in simulations of multicomponent systems, *J. Comput. Phys.*, **228**, 2009, 8467-8479.
- 46 R. Darkins, M.L. Sushko, J. Liu, D.M. Duffy, Stress in titania nanoparticles: an atomistic study., *Phys Chem Chem Phys.*, **16**, 2014, 9441-9447.
- 47 C.-C. Chen, C.-C. Lin, L.-G. Liu, S.V. Sinogeikin, J.D. Bass, Elasticity of single-crystal calcite and rhodochrosite by Brillouin spectroscopy, *Amer. Mineral.*, **86**, 2001, 1525-1529.
- 48 Y.-Y. Kim, L. Ribeiro, F. Maillot, O. Ward, S. Eichhorn, F. Meldrum, Bio-Inspired Synthesis and Mechanical Properties of Calcite-Polymer Particle Composites, *Adv. Mater.* **22**, 2010, 2082.