

PCCP

Accepted Manuscript



This is an *Accepted Manuscript*, which has been through the Royal Society of Chemistry peer review process and has been accepted for publication.

Accepted Manuscripts are published online shortly after acceptance, before technical editing, formatting and proof reading. Using this free service, authors can make their results available to the community, in citable form, before we publish the edited article. We will replace this *Accepted Manuscript* with the edited and formatted *Advance Article* as soon as it is available.

You can find more information about *Accepted Manuscripts* in the [Information for Authors](#).

Please note that technical editing may introduce minor changes to the text and/or graphics, which may alter content. The journal's standard [Terms & Conditions](#) and the [Ethical guidelines](#) still apply. In no event shall the Royal Society of Chemistry be held responsible for any errors or omissions in this *Accepted Manuscript* or any consequences arising from the use of any information it contains.

Gas Molecule Scattering & Ion Mobility Measurements for Organic Macro-ions in He versus N₂ Environments

Carlos Larriba-Andaluz^{1*}, Juan Fernandez-Garcia², Michael A. Ewing³, Christopher J. Hogan Jr.¹, and David E. Clemmer³

¹University of Minnesota, Mechanical Engineering Department, Minneapolis, MN, 55455

²Yale University, Mechanical Engineering Department, PO Box 208286, New Haven, CT 06520-8286

³Indiana University, Department of Chemistry, Bloomington, IN 55455

ABSTRACT: A pending issue in linking ion mobility measurements to ion structures is that the collision cross section (CCS, the measured structural parameter in ion mobility spectrometry) of an ion is strongly dependent upon the manner which gas molecules effectively impinge and are reemitted from ion surfaces (when modeling ions as fixed structures). To directly examine gas molecule impingement and reemission processes and their influence, we measured the CCSs of positively charged ions of room temperature ionic liquids 1-ethyl-3-methylimidazolium dicyanamide (EMIM-N(CN)₂) and 1-ethyl-3-methylimidazolium tetrafluoroborate (EMIM-BF₄) in N₂ using a differential mobility analyzer-mass spectrometer (DMA-MS) and in He using a drift tube mobility spectrometer-mass spectrometer (DT-MS). Cluster ions, generated via electrosprays, took the form (AB)_N(A)_z, spanning up to z = 20 and with masses greater than 100kDa. As confirmed by molecular dynamics simulations, at the measurement temperature (~300 K), such cluster ions took on globular conformations in the gas phase. Based upon their attained charge levels, in neither He nor N₂ did the ion-induced dipole potential significantly influence gas molecule-ion collisions. Therefore, differences in the CCSs measured for ions in the two different gases could be primarily attributed to differences in gas molecule behavior upon collision with ions. Overwhelmingly, through comparison of predicted CCSs with selected input impingement-reemission laws to measurements, we find that in N₂, gas molecules collide with ions diffusely- they are reemitted at random angles relative to the gas molecule incoming angle- and inelastically. Meanwhile, in He, gas molecules collide specularly and elastically and are emitted from ion surfaces at deterministic angles. Results can be rationalized on the basis of the momentum transferred per collision; in the case of He, individual gas molecule collisions minimally perturb the atoms within a cluster ion (internal motion), while in the case of N₂, individual gas molecules have sufficiently large momentum to alter internal motion in organic ions.

INTRODUCTION

Ion Mobility Spectrometry (IMS) is widely used for the characterization of sub-nanometer to micrometer sized charged entities (ions), including biomolecules [1-9], explosives [10], polymers [11-15], ambient aerosol particles [16, 17], and metal [18] and metal oxide [19] nanoparticles. Despite the increasing use of IMS in laboratory, clinical [20, 21], and environmental [16] settings, there remain difficulties in understanding the manner in which ions interact with gas molecules as they drift through the separation regions of IMS devices. A linearized solution for the mobility of ion (Z_p), referred to as the Mason-Schamp equation [22] and which is approximately valid for ions moving at low speed relative to the bath gas mean thermal speed, states that under constant gas conditions of temperature and pressure, and large mean free path relative to ion size, the ion mobility is proportional to the ratio of the ion's charge state (z) to its collision cross section (CCS), Ω :

$$Z_p = \sqrt{\frac{9\pi}{128m_{red}n_{gas}kT}} \frac{ze}{\Omega}, \quad (1)$$

where k is the Boltzmann constant, T is the gas temperature, n_{gas} is the gas molecule number concentration, m_{red} is the reduced mass of the ion-gas molecule system, and e is the unit elementary charge. In contrast to the other easily defined parameters on the right-hand side of equation (1), the CCS (also referred to as the first collision integral) is a very intricate parameter, quantifying the extent to which

momentum is transferred from gas molecules to ions upon close approach [23-32]; hence it is dependent on ion-gas molecule interactions. There is considerable interest in calculating the CCS for model ion structures in both gases in which measurements are made, which enables the application of IMS not only for ion separation, but approximate identification of ion structure in the gas phase [13, 33-40]. However, ambiguities in modeling gas molecule-ion dynamics can hinder the possibility of linking ion structure to the CCS (and measured mobilities). Although in prior studies the CCS has been equated with averaged oriented physical cross section of an ion in the gas phase [41, 42], the collision cross section is also dependent on parasitic effects that increase its value beyond an ion's projected area and which are in many instances difficult to describe *a priori*. Of particular difficulty are modeling multiple gas molecule scattering influences [24] (i.e. the enhancement of the CCS caused by multiple collisions that occur from the same gas molecule) coupled with:

- 1) The exchange of energy between vibration and translational degrees of freedom of the atoms inside the ion and those of the gas molecule. [27-30]
- 2) Both short and long range potential energy changes (including Lennard-Jones and ion-induced dipole potentials). [23, 27]
- 3) The change in "gas molecule-gas molecule" collision dynamics brought about by the presence of a sufficiently large ion. [43]
- 4) Changes to the ion structure which may be brought about by gas molecule close approach and impingement.

For complex, corrugated ion structural models (i.e. all-atom structural models as well as coarse-grained models of large ions with polyatomic base units [2, 44]), Monte Carlo algorithms are the most tractable approach for CCS calculation, in which gas molecules are seeded with an initial velocity near an ion, and each gas molecule's trajectory is monitored to infer the rate of momentum transfer (which leads to the drag force on the ion as well as its CCS). A number of such algorithms have been developed for this purpose [7, 23-28, 31, 32, 42, 44, 45]. In all developed CCS calculations algorithms to date, several simplifications are made, the most important of which is that the atoms/base units within the ion remain fixed. While this choice significantly speeds up calculations, particularly when hard-sphere interactions are used, it invariably leads to the need to choose a reemission law defining the manner (angle and speed) in which gas molecules are released from the ion surface upon collision. Regrettably, there is, up to this date, no widely accepted reemission law which can be invoked universally for all ions and all bath gases [29, 30].

At present, there are two employed reemission laws in CCS calculations, the elastic specular hard sphere scattering model (EHSS) [24] and the inelastic diffuse hard sphere scattering model (DHSS) [27, 28]. In the former, momentum transferring collisions are assumed to be between a "frozen" ion and moving, spherical gas molecules. EHSS model collisions are thus regarded as completely specular (with deterministic reemission angles) as well as elastic. In this instance, the CCS enhancement over the projected area of the ion only arises from reiterative collisions of a spherical gas molecule with different atoms of the structure (multiple collision events). This type of scattering therefore increases the CCS by an amount which depends only on the roughness of the structure in comparison to the size of the gas molecule. The assumptions of the EHSS model (specular, elastic collisions) are further implicit in CCS calculations where Lennard-Jones potential interactions are modeled between all atoms within an ion and the gas molecule (i.e. so-called trajectory methods). Conversely, in DHSS models, though the atoms in the ion structure still remain fixed, a semi-empirical law after gas molecule impingement is brought forth to mimic how the collisions would behave if the atoms involved were vibrating and rotating, i.e. non-modeled degrees of freedom in both the ion and the gas molecule are considered in energy conservation. While a number of DHSS models can be developed [46], in the most common one, chosen to match a number of experimental results [13, 47-52], gas molecule velocities post-collision are sampled from a Maxwell-Boltzmann distribution at the ion temperature (mimicking maximal exchange between ion internal energy and gas molecule translational energy) and the angle of reemission is sampled randomly. The DHSS model therefore leads to an increase in CCS over the projected area due to not only multiple gas molecule scattering collisions, but also to the diffuse and inelastic nature each individual collision.

When using all-atom models of ion structures, the EHSS model (and related trajectory methods with implicitly assumed specular-elastic collisions) has been and continues to be the most commonly used approach for CCS calculation. However, from a theoretical point of view, it is clear that EHSS model is not rigorously valid for any ion in any bath

gas, as to maintain thermal equilibrium between the ion and gas molecule there must be some degree of thermal energy exchange upon collision. With that said, in terms of CCS calculations the question becomes how important are the effects of energy exchange on CCSs and to what extent must they be considered in calculations. A number of studies find reasonable agreement between EHSS model predictions and CCSs inferred from measurements in He of small (< 1000 Da) ions [6, 23-25, 32, 53], suggesting that, in this instance, internal energy exchange on a per collision basis minimally influences gas molecule momentum transfer to an ion. Conversely, in N₂ and air and for larger organic and inorganic ions (>1000 Da), DHSS model predictions find better agreement with experimental measurements [13, 28, 49, 50, 54-56]. However, recent work examining iodide salt cluster ions in air highlights that neither the EHSS model nor the DHSS model can be universally applied in CCS calculations [29]. Further, with incorporation of Lennard-Jones potential parameters (with ad-hoc parameters to match experimental measurements), prior work [7] has adapted trajectory method calculations developed for He (with assumed specular collisions) to find reasonable agreement with measurements of small ions in N₂.

There is hence remaining ambiguity in how to perform CCS calculations to compare model structures to measurements, particularly in diatomic gases [57]. Aside from the arduous task of coupling Molecular Dynamics (MD) to CCS calculations (wherein all atomic motion in gas molecules and ions is incorporated), a practical way to examine these scattering effects is by comparing experimental results with numerical calculations of simple ions whose structures can be inferred with little uncertainty from MD calculations. Along these lines the purpose of this work is to attempt to resolve ambiguities in how to practically perform CCS calculations for large organic ions in both helium and nitrogen, with an emphasis on examining how different reemission rules influence calculations. We specifically focus on large organic ions because of the considerable interest in using IMS for biomolecular analysis [1-3, 58, 59], and the previously attained results for inorganic ions [29] which do not yet yield a universal reemission law to employ. As model ions, we examine multiply charged cluster ions generated from two different room temperature ionic liquids (RTILs), 1-ethyl-3-methylimidazolium dicyanamide (EMIM-N(CN)₂) and 1-ethyl-3-methylimidazolium tetrafluoroborate (EMIM-BF₄), and measure their mobilities in helium and diatomic nitrogen, with subsequent mass analysis (IMS-MS experiments). Important advantages of RTILs in this effort are that (1) they are of low volatility, minimizing often observed dissociation post IMS analysis and prior to MS analysis [60], (2) when electrosprayed in high enough concentration, RTILs arrange themselves as globular aggregates with sizes ranging between 1 and ~9 nm, which consist of hundreds to several thousands of atoms [50, 61-63], and with charge states varying from 1 upwards of 20+ charges, (3) they, as liquids, cannot adopt highly stretched/linear structures (as compared to highly charged proteins or polymers [13, 14]) and, in the size range of interest, they have density close to known bulk values [50, 62, 63], (4) large data sets for the mobilities of ions of known chemical composition are attained using only one experiment (the relation between characteristic ion mobilities is thus not affected by variations of temperature or pressure of the

instrument between experiments), and (5) the contribution of the ion induced dipole potential to CCS calculations (which can be large for small ions in nitrogen bath gas) is minimized, as the charge on RTIL cluster ions has a ceiling defined by either the Rayleigh limit or ion evaporation kinetics [61]. Collectively, this suggests that the difference CCSs measured in different gases will be primarily due to the extent to which collisions are elastic or inelastic for these ions. The sections that follow describe in detail the generation of RTIL cluster ions and their measurement via IMS-MS, the development of structural models for the analyzed ions, and the comparison of measured collision cross sections to theoretical predictions with different assumed gas molecule impingement-reemission rules invoked.

EXPERIMENTAL SETUP AND METHODS

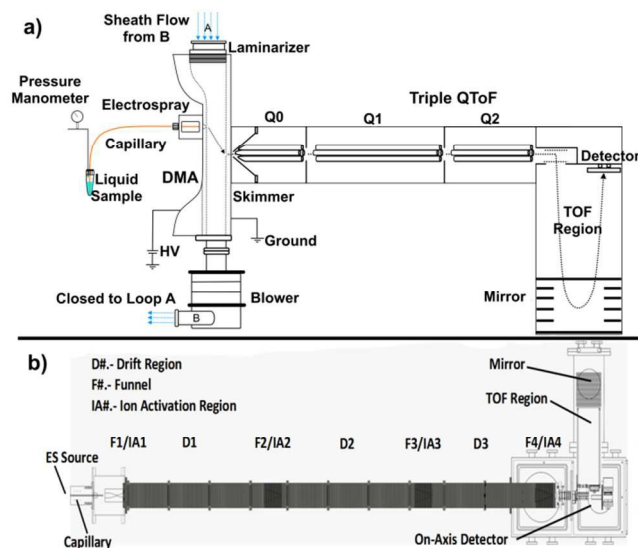


Figure 1. Depictions of the two IMS-MS setups used, relying either on (a.) a differential mobility analyzer, DMA, or (b.) a 3 m drift tube.

Two distinct ion mobility spectrometers were used for measurements: (1) a parallel-plate Differential Mobility Analyzer (DMA; model P4 SEADM; resolution near 60) [64] coupled to a QSTAR XL time-of-flight (TOF) mass spectrometer (DMA-MS), and (2) a custom built 3 meter drift tube ion mobility spectrometer coupled to a mass spectrometer (DT-MS, resolution in excess of 100). Though different setups were employed, we remark that the use of these two different instruments does not alter in any way the results or conclusions shown herein for the following reasons:

- 1) Both instruments used follow the same principle. That is, a constant electric field pulls charged particles or ions through a gas medium separating such ions through their ability to traverse this medium.
- 2) The results presented in this work for comparison between He and N₂ are not presented as raw collision cross sections (CCS) comparisons between gases but ratios of CCSs to their Average Projected Areas, as well as how the CCS to projected area ratio scales with ion size (diameter). Comparison made in this manner largely mitigates influences of different instrument setups, and further diminishes the influence of different calibration approaches.

Both experimental setups are depicted in Figure 1, and a limited overview of each of the systems is provided here, including specific details on the RTIL cluster ion generation techniques employed. Further explanation of the operation of the ion mobility spectrometers is provided in prior work for the DMA-MS [61, 64] and DT-MS [65] respectively.

Differential Mobility Analyzer-Mass Spectrometer (DMA-MS)

DMA are mobility filters which transmit continuous beams of ions with mobilities falling within a certain narrow band, the width of which is defined by the DMA resolution [66]. Analogous to the operation of a quadrupole mass filter, mobility spectra can be measured by varying DMA operational settings (applied voltage and sheath gas flowrate). As DMAs typically operate near atmospheric pressure, they can be installed on the front end of nearly any mass spectrometer which utilizes an atmospheric pressure ionization (API) source, provided the DMA outlet is properly integrated with the MS inlet to facilitate high ion transmission. Accordingly, a flat parallel plate DMA has been installed in front of a MD Sciex QSTAR triple quadrupole TOF mass spectrometer (*m/z* range ~40000; resolving power ~10000) and used for measurements here. Dry Nitrogen gas was used as the sheath flow (with the recirculating sheath flowrate maintained with a Domel Vacuum blower) at a pressure of ~1 atmosphere and a temperature of 35° C, which was measured at the entrance of the DMA with a thermocouple. At the DMA inlet (on the front plate electrode), for each experiment a solution of either 10-20mM EMIM-N(CN)₂ or EMIM-BF₄ in methanol or acetonitrile was electrospayed from a Polymicro silica capillary (inner diameter: 40 μm, outer diameter: 360 μm). Each solution was introduced into the capillary by placing it in a 1.5 ml polypropylene vial; the vial was pressurized above atmospheric pressure as to permit a flow of liquid to be pushed through a capillary, and through a platinum wire in the vial the liquid was raised to a potential ~2 kV above the front plate of the DMA using an EMCO high voltage power supply. At its outlet, the outer diameter of the silica capillary was carefully tapered down to ~80 micrometers to facilitate better anchoring of the meniscus of the electrospay cone, which lowers the onset voltage needed for electrospay. The capillary tip was aligned with the inlet of the DMA at a distance of around ~2 mm away from the slit, and a counterflow of 0.1-0.2 l min⁻¹ was used to prevent any non-charged species from entering the DMA.

For a mean sheath flow velocity, *U*, as well as applied potential *V*_{DMA}, the mobility of an ion transmitted from DMA inlet to outlet is given by the equation:

$$Z_p = \frac{U\delta^2}{LV_{DMA}} \quad (2)$$

where δ is the distance between DMA electrodes and *L* is the axial distance (along the plates) from inlet to outlet). However, since the velocity was not measured directly, a calibrant, the tetraheptylammonium (THA) bromide dimer, (THABr)THA⁺, with an atmospheric pressure mobility of 0.984 cm²/V*s at 31° C was used to infer a reference value for *V*_{DMA} [62]. For the EMIM-BF₄ spectra, the dimer appeared at 1600V while for the EMIM-N(CN)₂ the tetralkylammonium dimer was used to calibrate the 62⁺⁴ cluster (*m/z* =2857.9

Thomsons) with a reduced mobility of 0.5966 cm²/Vs at 20C occurring at 2419V .

Upon exiting the DMA, the ions enter the mass spectrometer through an inlet wherein the pressure is reduced orders of magnitude, from one atmosphere to ~1 torr. As noted in prior studies, in this region cluster ions may partially dissociate, losing one or several neutral cation-anion (AB) pairs [60], or a positively charged (for positive ions) cluster composed of two cations and one anion (AB)A⁺ [61]. This effect is enhanced when the declustering potentials are applied at the inlet. For this reason, we chose to keep declustering potentials set to 0 volts. Tandem mass-mobility spectra were gathered by measuring a time-of-flight mass spectrum for each selected value of V_{DMA} (in steps of 10 V), with constant DMA sheath flowrate. For each electrosprayed sample, a two dimensional *m/z* vs. *Z_p* spectrum was produced by assigning a color coded dimension to the logarithm of the ion signal intensity. Data were then post-processed using MATLAB.

Drift Tube Ion Mobility Spectrometry-Mass Spectrometry (DT-MS)

The drift tube employed consisted of a 3m long low pressure (~3 torr) He tube cell (Bloomington, Indiana) [67-69]. In it, a constant decrease in voltage through equally spaced resistors led to a constant electric field, *E*, which directed ions along the tube's length *L_d* while separating them in drift time *t_D* according to their inverse mobility:

$$Z_p = \frac{L_D}{t_D E} \quad (3)$$

The drift tube was interfaced with a custom-made TOF mass spectrometer, which was synchronized with the bursts of ions that were introduced to it from the drift tube by a pulsating gate. For every pulse of ions introduced into the drift tube, which required several milliseconds to traverse the tube, several hundred of pulses at drift-time-defined intervals were used to release ions into the mass spectrometer at the drift tube outlet. In this manner, tandem mass-mobility spectra were collected. To reach appreciably high signal-to-noise ratios, spectra were integrated over multiple drift tube measurements. As with DMA calibration, the mobility of examined ions was not inferred directly from instrument dimensions, but was instead inferred from measurement of a calibrant ion, in this instance a doubly charged bradykinin ion, which has a collision cross section of 246 Å² in helium [70].

To introduce cluster ions into the drift tube, a methanol solution of 0.1-0.3% by volume EMIM-(CN)₂ or EMIM-BF₄ was electrosprayed from a polyamide coated silica capillary (OD: 360µm; ID: 100µm, reduced to approximately 40µm at the tip). The solution was driven through the capillary using a syringe pump (kdScientific) and a 500µl syringe (Hamilton) at a rate of approximately 8µl/hr. A Bertan high voltage power supply floating 2.2kV was used to form stable electrosprays. Just prior to the ion funnel trap in the drift tube IMS-MS, there was a drop of pressure from 1 atmosphere to 3 torr, wherein similar to the high pressure drop region of the DMA-MS system, cluster ion dissociation reactions may have occurred. However, as in the DT-MS system this region was upstream of the mobility measurement, such reactions would not have been detectable in mass-mobility spectra. Similar to mass-mobility

spectra from DMA-MS measurements, DT-MS *m/z* vs. *Z_p* spectra were processed with MATLAB, and for plotting purposes a color code was assigned to the logarithm of the measured signal intensity.

Molecular Dynamics Simulations

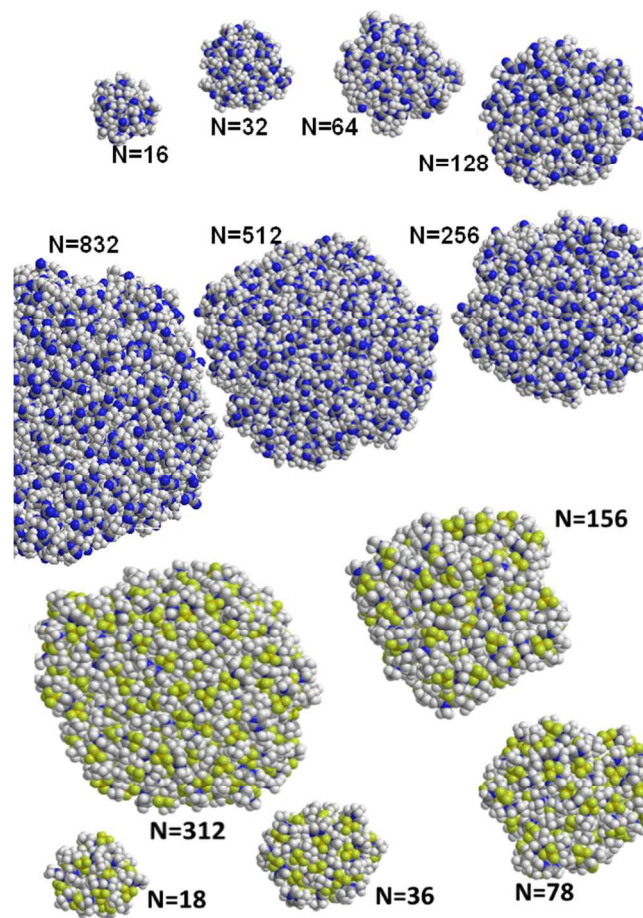


Figure 2. Depictions of candidate cluster ion structures resulting from molecular dynamic simulations of EMIM-N(CN)₂ (top) and EMIM-BF₄ (bottom). *N* denotes the number of pairs used in each model. The resulting structures were globular regardless of the initial position of the neutral pairs utilized.

Molecular dynamics simulations were used to generate EMIM-N(CN)₂ and EMIM-BF₄ cluster ion candidate structures, which in turn were used for CCS predictions and comparison to measurements (as described in the *Results & Discussion* section). In all calculations, the MM2 force-field [71] was applied. The structures analyzed were composed of a specific number of neutral cation-anion pairs *N*, with the cation as EMIM⁺ and the anion as N(CN)₂⁻ or BF₄⁻, depending on which RTIL was modeled. *N* = 16, 32, 64, 128, 256, 512 and 832 (~20000 atoms) were modeled for EMIM-N(CN)₂, while *N* = 18, 36, 50, 78, 156 and 312 were modeled for EMIM-BF₄. The smallest *N* simulations were initiated by adding neutral ion pairs in random locations, and allowing all atom positions to evolve in time. Initial conditions for larger *N* structures were then constructed by doubling structures obtained for smaller systems. In all instances, independent of initial configuration, globular configurations were obtained within several picoseconds of simulation time. After obtaining such structures, several cycles of simulated

annealing were performed, in which the simulation temperature was raised, and then cooled, to ensure a structure near the global energy minimum structure was obtained. Structures were then allowed to stabilize at 300K, close to the measurement temperature. In selected instances, several excess cations (EMIM^+) were added to structures to examine if such excess charges led to deformation of structures. However, it was found that for experimentally attainable excess charge levels, excess cations did not alter the physical cross sections of structures obtained in simulations.

Depictions of cluster ion structures resulting from simulations are provided in Figure 2 for both RTILs. Prior to incorporating structures into collision cross section calculations, we remark that it is essential that the overall size of structures be correctly scaled by comparison to reference values; molecular dynamics simulations give rise to structures whose physical dimensions are strongly dependent on the input potentials (which govern resulting interatomic distances). As the physical size on an ion is one of the largest contributors to its CCS, incorrectly sized structures must be rescaled for accurate CCS predictions. Fortunately, for the largest RTILs clusters examined, there is strong evidence that structures will have densities close to that of bulk RTILs [49, 50], and further near room temperature the densities of

EMIM-BF_4 and $\text{EMIM-N}(\text{CN})_2$ are known to be 1290 Kg/m^3 and 1111 Kg/m^3 , respectively [72]. To scale structures in accordance with these values we calculated the Solvent Accessible Volume (with a 1.4 \AA probe) of the largest simulated $\text{EMIM-N}(\text{CN})_2$ and EMIM-BF_4 , with $N = 832$ and $N = 312$, respectively. As the mass of these clusters is known exactly, volume calculation enabled direct determination of the density. In both cases, we observed that the density was underestimated, by 11.7% for $\text{EMIM-N}(\text{CN})_2$ and by $\sim 10.7\%$ for EMIM-BF_4 , similar to findings for polyethylene glycol structures obtained from simulations using the same force field [28]. Based on this result, all obtained structures from molecular dynamics were rescaled, such that their volumes were reduced by 11.7% and 10.7% for $\text{EMIM-N}(\text{CN})_2$ and EMIM-BF_4 cluster ions, respectively.

RESULTS AND DISCUSSION

Collision Cross Section Inference from Measurements

Figure 3 displays contour plots of measured signal intensity (depicted by color, with blue as low intensity and red as high intensity) versus the raw measured parameter proportional to inverse mobility (inverse mobility itself, $1/Z$, for DMA-MS and drift time for DT-MS) and m/z , for both $\text{EMIM-N}(\text{CN})_2$ and EMIM-BF_4 .

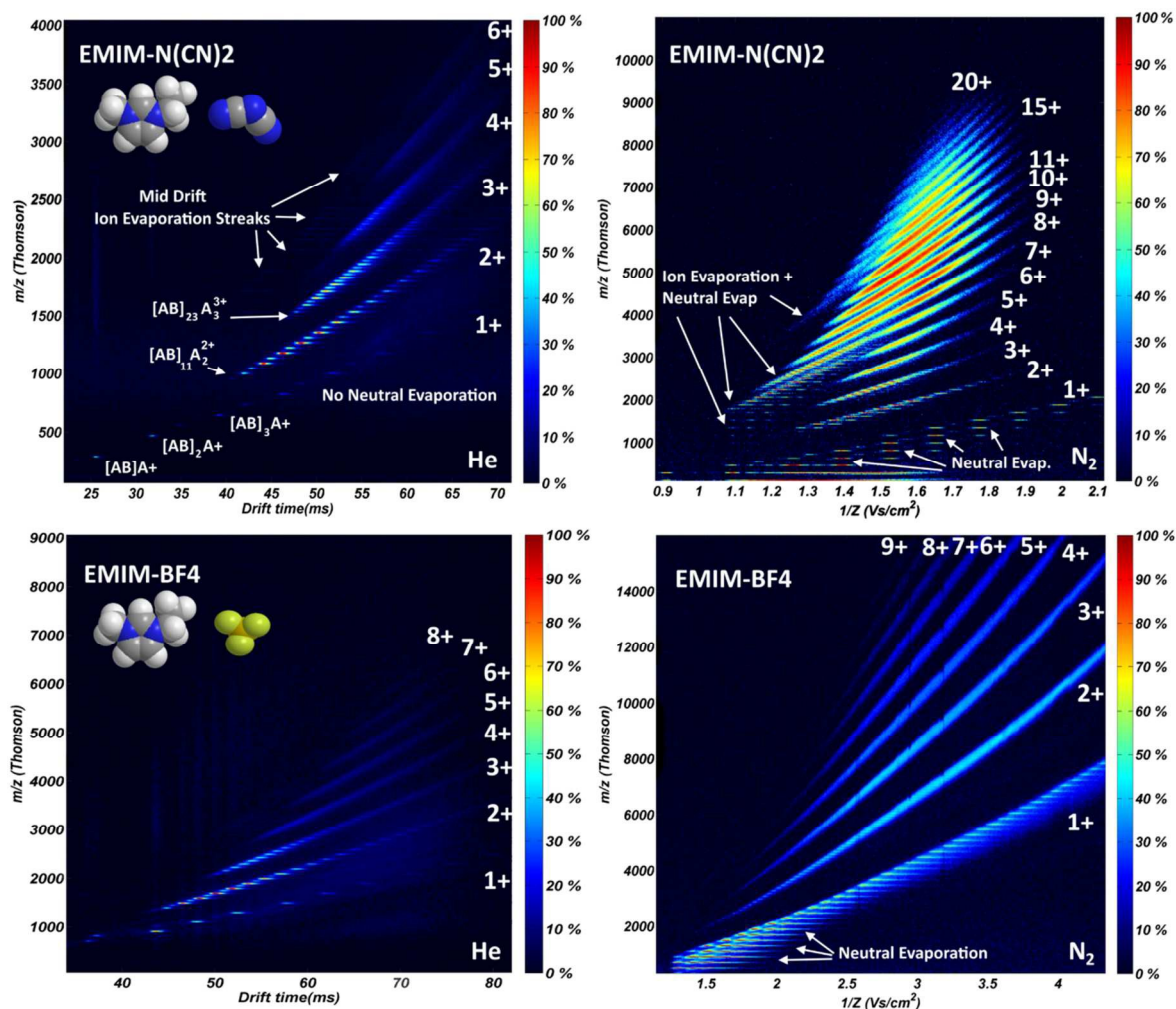


Figure 3. Mass-mobility contour plots for $\text{EMIM-N}(\text{CN})_2$ (top) and EMIM-BF_4 (bottom) cluster ions measured in two different gases: He (left, measured by DT-MS) and N_2 (right, measured by DMA-MS). Charge states (z) are labeled for identifiable bands. Selected species are labeled noting the number of neutral pairs and excess cations: $[\text{AB}]_N\text{A}^{z+}$.

DMA-MS measurements in N_2 are shown on the right side of figure, while DT-MS measurements in He are provided on the left side. Depictions of the cation (A) and anion (B) in both RTILs are provided in the figure as well. We first remark on several features evident in these spectra followed by discussion of conversion of measurements to CCSs for mass identified structures, leading to direct comparison of CCS predictions for simulated candidate structures, and finally the implications of the reported measurements.

All collected cluster ion spectra are similar to one another; as has been noted in prior work [28, 29, 60-63], cluster ions produced via positive mode electrospray have the chemical formula $(AB)_N A^+_{z_s}$, and in mass-mobility contour plots (such as those in Figure 3) each detected cluster ion leads to a line segment whose thickness (in the vertical direction) is determined by the mass spectrometer resolution and degree of mass averaging, while the width (in the horizontal direction) is governed by the resolution of the mobility spectrometer. As higher N cluster ions also have higher z, line segments for all ions of a specific z are grouped into identifiable bands in contour plots, with larger z bands appearing at progressively higher m/z ratios. The increase in m/z between neighboring line segments within the same band represents the mass of one cation-anion pair, hence line segments in higher z bands are closer to one another. Eventually, the attachment of impurities to ions prevents clear identification of line segments; for example, although the resolution in m/z should be sufficient to distinguish $z > 5$ species in all circumstances, only for several specific cluster ions is it possible. Nonetheless, because of the known band structure for cluster ions of a specific z in mass-mobility contour plots, it is possible to identify cluster ions with z up to 6 in all circumstances, and upwards of 20 for EMIM-N(CN)₂ cluster ions in DMA-MS measurements.

Also in DMA-MS contour plots, there is evidence for several dissociation reactions occurring for some clusters ions as they transited between the differential mobility analyzer and mass spectrometer. These reactions likely occur in the high pressure drop interface region, thus they are not detected in DT-MS analysis [14]; they would have occurred prior to both mobility and mass analysis. For charge state $z = 1$, several line segments appear spanning identical inverse mobility ranges, but differing in mass by successive AB units. Such line segments are the result of neutral pair evaporation/dissociation [29, 60]. Therefore, the line segments appear at an inverse mobility corresponding to the inverse mobility of the parent ion only; they are not evidence of multiple conformers of singly charged cluster ions. Similar to neutral evaporation, several clusters undergo ion evaporation between the DMA and MS, where the cluster $(AB)_N A^+$ typically dissociates once or several times. Ion evaporation events lead to progeny ions whose mass to charge ratio is higher than the parent ion (due to the loss of charge), but with the same mobility (unless ion evaporation occurs within the DMA itself, leading to mobilities intermediate from the parent and progeny ions' mobilities [61]). In several instances, ion evaporation is coupled with neutral evaporation, leading to progeny ions which have lost a net amount $(AB)_m A^+$, where $m < N$. Again, without consideration of such reactions, line segments resulting from ion evaporation may be erroneously interpreted as evidence of multiple conformers for certain cluster ions. However, when both neutral and ion

evaporation are accounted for, only a single line segment, identifying clearly m/z and Z_p for cluster ions, remains. Therefore, with proper instrument calibration, CCS values are inferable for a large number of cluster ions of known m/z and z through use of equation (1).

Comparison to Gas Molecule Scattering Calculations

Of primary interest in this work is the comparison of the CCS to the physical cross section (i.e. the orientationally averaged projected area, PA), both in measurements and in calculations, to examine the extent to which various impingement-remission rules lead to CCSs in agreement with measured CCSs in N_2 and He. Therefore, measured CCSs are normalized by projected areas, yielding for each ion the momentum scattering parameter $\Omega/PA = \xi$. The projected area was determined for each ion by modeling it as a sphere, inferring a mass diameter d_i from the ion's density, ρ_{ion} , and then using the equation [73]:

$$PA = \frac{\pi}{4} (d_i + d_g)^2 \quad (4)$$

where d_g is the gas molecule diameter, taken as 3.1 Å for N_2 and 2.4 Å for He. For each cluster, ρ_{ion} was inferred from the bulk density ρ_{bulk} , applying a correction factor for compressibility effects [73, 74]:

$$\rho_{ion} = \frac{\rho_{bulk}}{1 - \frac{\Delta P}{K_0 + k_s \Delta P}}, \quad (5)$$

where K_0 is the bulk modulus and k_s is a pressure correction factor which are taken to be 3 GPa and 5 GPa, respectively, for both RTILs [72]. ΔP is the Laplace pressure, which, when accounting for electrostatic forces (necessary when $z > 1$), is given by the equation:

$$\Delta P = \frac{4\gamma}{d_i} - \frac{z^2 e^2}{2\pi^2 \epsilon_0 d_i^4}, \quad (6)$$

where γ is the surface tension (0.059 N m⁻¹ at 295 K for EMIM-N(CN)₂ and 0.052 N m⁻¹ at 295 K for EMIM-BF₄ [75]) and ϵ_0 is the permittivity of free space (8.854 x 10⁻¹² F m⁻¹). While considered in all calculations, the increase in density resulting from equation (5) is at most 3% above the bulk density in the examined $z > 1$ ions. We elected not to compare $z = 1$ ions to calculations, as such clusters cannot be approximated by spheres, but note that for these cluster ions, equation (5) predicts substantial increases in ion densities.

To calculate CCSs for simulated cluster ion structures, we used the program IMoS (freely available from the corresponding author, and described in detail previously [27, 28, 29]), which enables CCS determination from direct calculation of the rate of momentum transfer from gas molecules to candidate structures. Excess charges during the calculations were placed on the surface or in the center observing negligible differences. Similarly in analogous calculations, +1 and -1 charges were placed in every cation/anion finding minor differences with respect to just using excess charges. We specifically used 5 separate sets of impingement-remission rules and ion-gas molecule potential interactions, denoted as follows. :

TEHSS (*trajectory-elastic hard sphere scattering*): Gas molecule impingement and reemission is modeled as elastic and specular, with both the gas molecule and atoms within cluster ions modeled as hard spheres, but with the ion-induced dipole potential considered. For brevity, only the results using the polarizability of He ($\alpha = 0.2073\text{\AA}^3$) with a gas radius of 1.2 \AA (equivalent to that of He) are reported with this method.

TDHSS (*trajectory-diffuse hard sphere scattering*): Gas molecule impingement and reemission is modeled as inelastic and diffuse, with both the gas molecule and atoms within cluster ions modeled as hard spheres, but with the ion-induced dipole potential considered. The gas molecule is reemitted instantly after collision, with its speed sampled from a Maxwell-Boltzmann distribution with a most probable speed that is 8% less than expected at the surface temperature of the cluster ion, at a random angle from the cluster ion surface. As shown elsewhere [28], this reemission choice will lead to $\xi = 1.36$ when applied to a spherical gas molecule and a smooth spherical ion, in the absence of potentials. For brevity, results are only shown for the N_2 model, in which the gas molecule is a sphere of radius 1.5 \AA and the polarizability is $\alpha = 1.7\text{\AA}^3$.

DHSS (*diffuse hard sphere scattering*): This method is identical to the TDHSS method, only with the ion induced dipole potential neglected.

TMLJHe (*trajectory method- Lennard-Jones-Helium*): Lennard-Jones potentials (4-6-12) are employed in monitoring gas molecule trajectories, which leads to the implicit assumption of specular-elastic collisions. The Lennard-Jones pairs applied have been taken from the optimized values for He used by Campuzano et al [7]. Since the values for Boron were unknown, $\sigma = 3.043\text{\AA}$ and $\epsilon = 1.34$ meV were used as an initial approximation, but were not optimized.

TMLJN2 (*trajectory method- Lennard-Jones-Nitrogen*): This method is similar to the TMLJHe method, but with the optimized Lennard-Jones pairs for N_2 provided by Campuzano et al. [7] employed. Values of $\sigma = 3.5\text{\AA}$ and $\epsilon = 2.60$ meV were used for Boron. Again, specular-elastic gas molecule scattering is implicitly assumed in this method.

For the TEHSS, TDHSS, and DHSS methods, atomic radii were taken from the values provided by Larriba & Hogan [28]; for boron and fluorine atoms the van der Waals radii were utilized. We remark, however, that for structures in the size range examined, the CCS is not a strong function of the atomic radii applied in calculations. All calculated CCSs are also normalized by PA, leading to ξ_{TEHSS} , ξ_{TDHSS} , ξ_{DHSS} , ξ_{TMLJHe} , and ξ_{TMLJN2} .

Additional comparison between measurement and theory is performed to examine the applicability of equations typically used to analyze mobility measurements in aerosol science and atmospheric chemistry. While in macromolecular and biomolecular analysis, most researchers opt to analyze mobility measurements via the Mason-Schamp equation (equation (1)), and compare the resulting CCS to predictions for a structural model [23, 24, 42] (as is performed here), in the study of aerosols, it is commonplace [76] to model measured ions (particles) as spheres and employ the

experimentally derived Stokes-Millikan (S-M) equation to compare the mobility Z_p with the particle diameter d_i [49, 77]:

$$Z_p = \frac{ze}{3\pi\mu(d_i+d_g)} \left(1 + \frac{2\lambda}{d_i+d_g} \left(A_1 + A_2 e^{-\frac{A_3(d_i+d_g)}{\lambda}} \right) \right), \quad (7)$$

where μ is the gas dynamic viscosity, λ is the gas molecule mean free path, and A_1 , A_2 and A_3 are dimensionless constants that have been inferred from multiple experiments (notably the work of Millikan [47], which leads to $A_1 = 1.257$, $A_2 = 0.4$, and $A_3 = 1.1$) and agree well with direct simulation Monte Carlo modeling of non-continuum drag on particles [43]. This equation, which depends on the Knudsen number (Kn , the ratio of twice the surrounding gas mean free path to the sum of the particle and gas molecule diameters), can only be equivalent to (1) in the so-called free molecular regime ($Kn \gg 1$), as the Mason-Schamp equation only applies in this limit. Equating (1) and (7) with $Kn \rightarrow \infty$ leads to the relationship:

$$\Omega_s = \frac{\pi}{4} \xi (d_p + d_g)^2 = \xi PA. \quad (8)$$

With the values of A_1 and A_2 provided, $\xi = 1.36$ in equation (8), which has been used almost without exception [5, 16, 18, 50, 54-56, 59, 61-63, 78-81] with the Stokes-Millikan equation (for measurements in air and N_2). While Epstein [46] originally made arguments that $\xi = 1.36$ could arise if 91% of gas molecule-ion collisions were DHSS-like, with the remaining 9% EHSS-like, recently, we have shown that this argument only applies for smooth spherical ions with smooth spherical gas molecules [30], and have further argued that it is not reasonable that gas molecules segregate themselves into two distinct populations, one colliding specularly and elastically and the second diffusely and inelastically, when both have the same speed distribution [28]. Therefore, the value $\xi = 1.36$, simply arises from empirical observation. Nonetheless, we include it in comparison to measurements because of its prevalent use.

By directly transforming Figure 3 contour plots, experimentally inferred values of ξ are plotted as functions of the square root of the cluster ion diameter in Figure 4 (Upper: EMIM- $\text{N}(\text{CN})_2$ cluster ions; Lower: EMIM- BF_4 cluster ions. Bands of specific charge states are still identifiable in plots, and are hence labelled. Calculation results are overlaid on Figure 4 plots, and are additionally provided in Table I. Immediately apparent is that for both RTILs, higher values of ξ are found for N_2 than in He, and that while ξ values in N_2 vary little with mass diameter (oscillating between 1.35-1.44) or charge state, there is a clear increase in ξ with mass diameter in He (from 1.05 to 1.25 for the measured mass diameter range). Further evident is that for both RTILs, the calculated ξ values of using TDHSS, DHSS, and TMLJN2 agree extremely well with N_2 gas experimental counterparts, and the predictions of the $Kn \rightarrow \infty$ limit of the Stokes-Millikan equation ($\xi = 1.36$) are in close agreement with measurements. Given that diffuse-inelastic gas-molecule reemission is employed in the TDHSS & DHSS methods, and noting that in prior work it has been shown that diffuse-inelastic scattering models do lead to relatively size invariant values of ξ 1.35-1.40 [27-29, 43], the agreement in this instance is somewhat expected. The strong agreement between the TDHSS & DHSS method results shows that for the ions

examined, the induced-dipole potential negligibly affects the CCS. More surprising is the mass diameter invariant value of ξ obtained by the TMLJN2 method, which utilizes optimized Lennard-Jones potentials. It appears that the use of such potentials leads to diffuse-like scattering, perhaps doing so by perturbing gas molecule trajectories such that they are reemitted from angles differing substantially from the hard-sphere specular angle due to the effect that the empirically-adapted strong potential wells of neighboring atoms has on the reemission of the gas molecules. Clearly, future work will be needed to resolve how this method reaches agreement with hard-sphere diffuse-inelastic methods over such a wide mass diameter range.

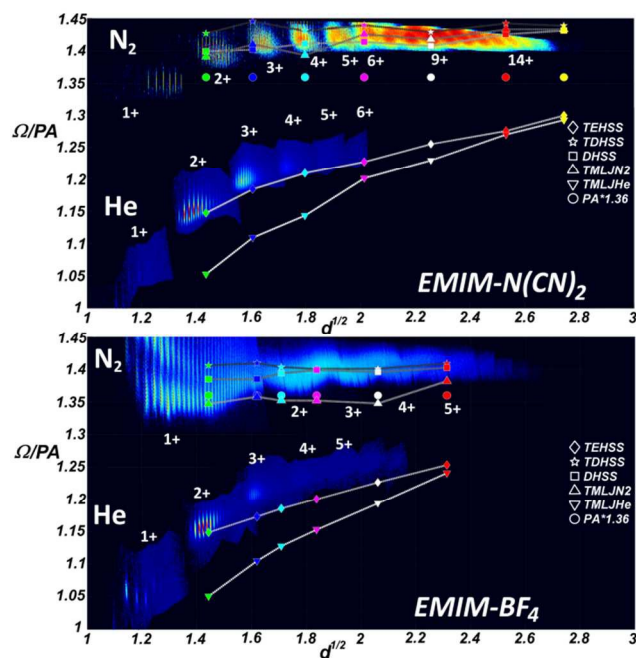


Figure 4. Plot of the parameter $\xi = \Omega/PA$ as a function of the square root of the mass diameter $d^{1/2}$ (where d is reported in nanometers) for EMIM-N(CN)₂ (top) and EMIM-BF₄ (bottom). Calculated CCSs are overlaid over the experimental results for selected potentials and impingement-reemission rules: TEHSS: specular-elastic (4-∞ potentials)- Diamonds; TDHSS: diffuse-inelastic (4-∞ potentials)- Stars; DHSS: diffuse-inelastic (hard sphere potentials)- Squares; TMLJN2: N₂ Lennard-Jones potentials (4-6-12 potentials)- Upright Triangles; TMLJHe: He Lennard-Jones potentials (4-6-12 potentials)- Downward Triangles; PA*1.36: Orientationally averaged projected area times 1.36- Circles.

Equally interesting is the agreement found for TEHSS and TMLJHe methods with experimental results in He. This suggests that the drag enhancement effect brought about by multiple scattering (gas molecules impinging more than once) alone is sufficient to describe the increase in ξ above unity for organic ions in He experiments, while it alone cannot explain the value of ξ in diatomic N₂. Experimental and theoretical evidence for differences in the manner in which gas molecules impinge and are reemitted from organic ions in these two gases can also be inferred from prior studies [2, 5, 29, 82]. However, to our knowledge, this is the only study which clearly displays these differences for ions with easily identifiable structure over a wide mass diameter range, and

uses a variety of gas molecule scattering calculations for comparison to measurements.

While only subtly detected in measurements, we are also able to examine changes in ξ for ions of a specific charge state, z . In the case of EMIM-N(CN)₂ cluster ions in N₂, for each charge state there was a decrease in ξ with increasing mass diameter, which can be attributed to a reduced influence of the ion-induced dipole potential (which increases ξ when present [27, 29, 30, 62, 63]). However, for EMIM-BF₄ cluster ions in N₂, a minimum in ξ for each charge state is observed at a specific mass diameter, beyond which the ion-induced dipole potential is negligible and ξ starts to increase. This different observed behavior suggests that although in N₂ both RTIL cluster ions have similar values of ξ , the manner in which gas molecules are reemitted from them upon collision is not necessary the same; there is no unique reemission angle distribution or velocity distribution which must apply to both ion types (or to any ion type). In the case of He, since the polarizability of the gas is an order of magnitude less than N₂, such effect is negligible and only a steady rise in ξ is observed for a fixed charge state.

Finally, as a side note, the fact that both TMLJN2 and TMLJHe results in the case of the EMIM-BF₄ are slightly lower relative to measurements than they are relative to EMIM-N(CN)₂ measurements suggests that the choice of the Lennard-Jones parameters for the Boron atom were slightly smaller than optimal.

Measurement Interpretation & Implications

Measurements show clearly that gases used in this study have distinct mechanisms of reemission from organic ions, which directly influences the CCSs of such ions in these gases. He atoms appear to collide specularly and elastically, while diatomic N₂ appears to collide diffusely and inelastically. As a first approximation, there is a simple explanation for the differences observed in both gases. He is a light monoatomic atom (4 Da) with a high translational velocity (mean thermal speed of ~1500m/s near 300 K), while N₂ is a heavier diatomic gas (28 Da) with a more modest translational velocity (~500m/s near 300 K). When a gas molecule impingement occurs upon a specific atom in an ion, which itself is vibrating, the momentum transferred (mass times velocity) by the N₂ gas molecule is much larger than that of the He atom. Given that most atoms in the cluster have less mass than that of the diatomic molecule, this invariably leads to a high probability for change in atomic trajectories (i.e. atomic internal energy) within ions. He atoms, conversely, are sufficiently light and fast, that their impingement does not disturb heavier atoms in an ion, leaving the reemission trajectories as specular and elastic. This argument is additionally supported by recent measurements of the CCS of metal iodide salts in air; the closer the metal cation mass to N₂ and O₂, the larger the value of ξ observed. [29]

The differences in the Mason-Schamp and Stokes-Millikan equations can also be addressed through our results. Results suggest that the Stokes-Millikan equation remains valid in N₂ down to ~1 nm in mass diameter and is equivalent to Mason-Schamp's equation in this instance. However, the Stokes-Millikan $Kn \rightarrow \infty$ limit does not appear to be applicable to ions

measured in He spanning the entire mass diameter range examined here. As ξ increases with mass diameter, it presumably reaches an asymptotic value in better agreement with Stokes-Millikan predictions.

Not addressed here, a correction factor would need to be introduced into the Stokes-Millikan equation for smaller or more highly charged species in diatomic gases, as in its conventional form the influences of the ion-induced dipole

potential are ignored (in equation 4). Further, for lower molecular weight ions composed of cation-anion pairs, local electrostatic interactions between gas molecules and cations/anions may additionally influence CCSs.

Table 1. Calculated collision cross sections for all cases studied. Cluster ions are composed of N number of neutrals appearing on the first column for both RTILs, and with a charge state, z, in parenthesis. All CCS are given in Å^2 , while ξ values are dimensionless. ξ Results for calculations matching N_2 measurements are provided in the left ξ columns, while results matching He measurements are provided in the ξ columns on the right.

$EMIM-N(CN)_2$	$TMLIN_2$	$DHSS$	$TDHSS$	PA_{N_2}	ξ_{TMLIN_2}	ξ_{DHSS}	ξ_{TDHSS}	$TMLJHe$	$TEHSS$	PA_{He}	ξ_{TMLJHe}	ξ_{EHSS}
16(2)	615.3	618.9	631.6	442.3	1.39	1.40	1.43	440.0	479.5	418	1.05	1.15
32(3)	902.3	897.2	925	639.9	1.41	1.40	1.45	677.8	723.6	611.2	1.11	1.18
64(4)	1325	1342	1362	950.8	1.39	1.41	1.43	1035	1095	906.2	1.14	1.21
128(6)	2107	2090	2128	1478	1.43	1.41	1.44	1725	1763	1437	1.20	1.23
256(9)	3180	3157	3205	2243	1.42	1.41	1.43	2670	2725	2172	1.23	1.25
512(14)	4959	4934	5004	3461	1.43	1.43	1.45	4279	4298	3370	1.27	1.28
832(18)	7503	7578	7616	5295	1.42	1.43	1.44	6769	6793	5228	1.29	1.30
$EMIM-BF_4$	$TMLIN_2$	$DHSS$	$TDHSS$	PA_{N_2}	ξ_{TMLIN_2}	ξ_{DHSS}	ξ_{TDHSS}	$TMLJHe$	$TEHSS$	PA_{He}	ξ_{TMLJHe}	ξ_{EHSS}
18(1)	602.4	619.3	628.7	447.2	1.35	1.38	1.41	443.0	484.2	421.6	1.05	1.15
36(2)	938.9	957.6	974.6	691.4	1.36	1.38	1.41	731.4	776.4	661.9	1.10	1.17
50(2)	1137	1172	1180	840.6	1.35	1.39	1.40	908.8	955.3	805.9	1.13	1.19
78(2)	1438	1488	1490	1064	1.35	1.40	1.40	1184	1233	1027	1.15	1.20
156(3)	2226	2305	2314	1651	1.35	1.40	1.40	1909	1961	1599	1.19	1.23
312(5)	3453	3505	3521	2499	1.38	1.40	1.41	3025	3055	2438	1.24	1.25

CONCLUSIONS

The CCSs of RTIL cluster ions, generated by positive mode electrospray, have been measured in N_2 and He by DMA-MS and DT-MS respectively. Measured CCSs were normalized by the calculated physical cross sections of ions (PA, projected area), yielding the parameter $\xi = \Omega/PA$. ξ values were similarly estimated for candidate structures generated via molecular dynamics simulations, using gas molecule scattering calculations with a variety of impingement-reemission laws and gas molecule-ion potential interactions. Based on this study, we conclude:

- 1) Diatomic N_2 collides non-specularly and inelastically with RTIL ions (with ions modeled as frozen structures), evidenced by measured CCSs found to be in agreement with gas molecule scattering calculations utilizing hard sphere potentials, but wholly diffusive-inelastic, gas molecule impingement and reemission rules.
- 2) Monoatomic He appears to collide almost perfectly specularly and elastically with the same ions, as measurements agree with elastic hard sphere scattering models.
- 3) The difference in measured CCSs between the two gases cannot be attributed to gas molecule polarization, or to gas molecule size effects.

4) Interestingly, trajectory methods to adjusted Lennard-Jones potentials can be used to mimic diffuse-inelastic gas molecule scattering calculations; specifically, trajectory method calculations using the potentials provided by Campuzano et al [7] agree well with TDHSS and DHSS calculations.

5) The difference in gas molecule impingement-reemission between the two gases can be rationalized as arising from the larger amount of momentum transferred per collision with N_2 as compared to He.

AUTHOR INFORMATION

Corresponding Author

* Correspondence and reprint requests should be addressed to clarriba@umn.edu 111 Church st. RM 2101A Minneapolis MN, 55455

ACKNOWLEDGMENT

C. L. A. acknowledges support from a Ramon-Areces Fellowship. The authors additionally thank Prof. Juan Fernandez de la Mora (Yale University) for enlightening teaching and discussions on the nature of gas molecule-ion collisions.

REFERENCES

- (1) T. L. Pukala, B. T. Ruotolo, M. Zhou, A. Politis, R. Stefanescu, J. A. Leary, C. V. Robinson, *Structure* **2009**, *17*, 1235-1243.
- (2) B. T. Ruotolo, J. L. P. Benesch, A. M. Sandercock, S. J. Hyung, C. V. Robinson, *Nat Protoc* **2008**, *3*, 1139-1152.
- (3) B. C. Bohrer, S. I. Merenbloom, S. L. Koeniger, A. E. Hilderbrand, D. E. Clemmer, *Annu Rev Anal Chem* **2008**, *1*, 293-327.
- (4) M. F. Bush, Z. Hall, K. Giles, J. Hoyes, C. V. Robinson, B. T. Ruotolo, *Anal Chem* **2010**, *82*, 9557-9565.
- (5) M. T. Bowers, *Int J Mass Spectrom*, **2014**, *370*, 75-95.
- (6) B. S. Kinnear, D. T. Kaleta, M. Kohtani, R. R. Hudgins, M. F. Jarrold, *J Am Chem Soc* **2000**, *122*, 9243-9256.
- (7) I. Campuzano, M. F. Bush, C. V. Robinson, C. Beaumont, K. Richardson, H. Kim, H. I. Kim, *Anal Chem* **2012**, *84*, 1026-1033.
- (8) Z. Hall, A. Politis, M. F. Bush, L. J. Smith, C. V. Robinson, *J Am Chem Soc* **2012**, *134*, 3429-3438.
- (9) K. Thalassinou, S. E. Slade, K. R. Jennings, J. H. Scrivens, K. Giles, J. Wildgoose, J. Hoyes, R. H. Bateman, M. T. Bowers, *Int J Mass Spectrom* **2004**, *236*, 55-63.
- (10) M. Tam, H. H. Hill, *Anal Chem* **2004**, *76*, 2741-2747.
- (11) S. Trimpin, D. E. Clemmer, *Anal Chem* **2008**, *80*, 9073-9083.
- (12) S. Trimpin, M. Plasencia, D. Isailovic, D. E. Clemmer, *Anal Chem* **2007**, *79*, 7965-7974.
- (13) C. Larriba, J. Fernandez de la Mora, *J Phys Chem B* **2012**, *116*, 593-598.
- (14) C. Larriba, J. Fernandez de la Mora, D. E. Clemmer, *J Am Soc Mass Spectrom* **2014**, *25*, 1332-1345.
- (15) J. Gidden, T. Wyttenbach, A. T. Jackson, J. H. Scrivens, M. T. Bowers, *J Am Chem Soc* **2000**, *122*, 4692-4699.
- (16) J. Jiang, J. Zhao, M. Chen, F. Eisele, J. H. Scheckman, B. J. Williams, C. Kuang, P. H. McMurry, *Aerosol Sci Technol* **2011**, *45*, ii-v.
- (17) M. Ehn, H. Junninen, S. Schobesberger, H. E. Manninen, A. Franchin, M. Sipilä, T. Petaja, V. M. Kerminen, H. Tammet, A. Mirme, S. Mirme, U. Horrak, M. Kulmala, D. R. Worsnop, *Aerosol Sci Technol* **2011**, *45*, 522-532.
- (18) A. Kumar, S. Kang, C. Larriba-Andaluz, H. Ouyang, C. J. Hogan, R. M. Sankaran, *Nanotechnology* **2014**, *25*, 385601.
- (19) J. Fang, Y. Wang, M. Attoui, T. S. Chadha, J. R. Ray, W.-N. Wang, Y.-S. Jun, P. Biswas, *Anal Chem* **2014**, *86*, 7523-7529.
- (20) M. Westhoff, P. Litterst, L. Freitag, W. Urfer, S. Bader, J.-I. Baumbach, *Thorax* **2009**, *64*, 744-748.
- (21) S. Armenta, M. Alcalá, M. Blanco, *Anal. Chim. Acta* **2011**, *703*, 114-123.
- (22) E. W. McDaniel, E. A. Mason, *The Mobility and Diffusion of Ions in Gases*. Wiley, New York, **1973**.
- (23) M. F. Mesleh, J. M. Hunter, A. A. Shvartsburg, G. C. Schatz, M. F. Jarrold, *J Phys Chem-Us* **1996**, *100*, 16082-16086.
- (24) A. A. Shvartsburg, M. F. Jarrold, *Chem Phys Lett* **1996**, *261*, 86-91.
- (25) A. A. Shvartsburg, B. Liu, M. F. Jarrold, K. M. Ho, *J Chem Phys* **2000**, *112*, 4517-4526.
- (26) A. A. Shvartsburg, S. V. Mashkevich, K. W. M. Siu, *J Phys Chem A* **2000**, *104*, 9448-9453.
- (27) C. Larriba, C. J. Hogan, *J Comput Phys* **2013**, *251*, 344-363.
- (28) C. Larriba, C. J. Hogan, *J Phys Chem A* **2013**, *117*, 3887-3901.
- (29) H. Ouyang, C. Larriba-Andaluz, D. R. Oberreit, C. J. Hogan, *J Am Soc Mass Spectrom* **2013**, *24*, 1833-1847.
- (30) H. Kim, H. I. Kim, P. V. Johnson, L. W. Beegle, J. L., Beauchamp, W. A. Goddard, I. Kanik, *Anal. Chem.* **2008**, *80*, 1928.
- (31) Y. Alexeev, D. G. Fedorov, A. A. Shvartsburg, *J Phys Chem A* **2014**, *118*, 6763-6772.
- (32) A. A. Shvartsburg, B. Liu, K. W. M. Siu, K. M. Ho, *J Phys Chem A* **2000**, *104*, 6152-6157.
- (33) B. T. Ruotolo, K. Giles, I. Campuzano, A. M. Sandercock, R. H. Bateman, C. V. Robinson, *Science* **2005**, *310*, 1658-1661.
- (34) C. J. Hogan, B. T. Ruotolo, C. V. Robinson, J. Fernandez de la Mora, *J Phys Chem B* **2011**, *115*, 3614-4621.
- (35) J. Fernandez de la Mora, R. Borrajo, Z.-G. M., *J Phys Chem B* **2012**, *116*, 9882-9898.
- (36) S. H. Chen, L. X. Chen, D. H. Russell, *J Am Chem Soc* **2014**, *136*, 9499-9508.
- (37) S. Vahidi, B. B. Stocks, L. Konermann, *Anal Chem* **2013**, *85*, 10471-10478.
- (38) A. R. Johnson, J. M. Dilger, M. S. Glover, D. E. Clemmer, E. E. Carlson, *Chem Commun* **2014**, *50*, 8849-8851.
- (39) H. L. Shi, D. E. Clemmer, *J. Phys. Chem. B* **2014**, *118*, 3498-3506.
- (40) F. Lanucara, S. W. Holman, C. J. Gray, C. E. Eyers, *Nat. Chem.* **2014**, *6*, 281-294.
- (41) E. van Duijn, A. Barendregt, S. Synowsky, C. Versluis, A. J. R. Heck, *J Am Chem Soc* **2009**, *131*, 1452-1459.
- (42) A. A. Shvartsburg, S. V. Mashkevich, E. S. Baker, R. D. Smith, *J Phys Chem A* **2007**, *111*, 2002-2010.
- (43) C. Zhang, T. Thajudeen, C. Larriba, T. E. Schwartzentruber, C. J. Hogan, *Aerosol Sci and Technol* **2012**, *46*, 1065-1078.
- (44) D. W. Mackowski, *J Aerosol Sci* **2006**, *37*, 242-259.
- (45) H. I. Kim, H. Kim, E. S. Pang, E. K. Ryu, L. W. Beegle, J. A. Loo, W. A. Goddard, I. Kanik, *Anal Chem* **2009**, *81*, 8289-8297.
- (46) P. S. Epstein, *Phys Rev* **1924**, *23*, 710-733.
- (47) R. A. Millikan, *Phys Rev* **1923**, *22*, 1-23.
- (48) J. H. Kim, G. W. Mulholland, S. R. Kukuck, D. Y. H. Pui, *J Res Natl Inst Stan* **2005**, *110*, 31-54.
- (49) B. K. Ku, J. Fernandez de la Mora, *Aerosol Sci and Technol* **2009**, *43*, 241-249.
- (50) C. Larriba, C. J. Hogan, M. Attoui, R. Borrajo, J. Fernandez-Garcia, J. Fernandez de la Mora, *Aerosol Sci and Technol* **2011**, *45*, 453-467.
- (51) M. D. Allen, O. G. Raabe, *Aerosol Sci and Technol* **1985**, *4*, 269-286.
- (52) H. Jung, K. Han, G. W. Mulholland, D. Y. H. Pui, J. H. Kim, *J Aerosol Sci* **2013**, *65*, 42-48.
- (53) P. Dugourd, R. R. Hudgins, M. F. Jarrold, *Chem Phys Lett* **1997**, *267*, 186-192.
- (54) B. K. Ku, J. Fernandez de la Mora, D. A. Saucy, J. N. Alexander, *Anal Chem* **2004**, *76*, 814-822.
- (55) D. A. Saucy, S. Ude, I. W. Lenggono, J. Fernandez de la Mora, *Anal Chem* **2004**, *76*, 1045-1053.
- (56) Z. G. Li, H. Wang, *Phys Rev E* **2003**, *68*.
- (57) C. Larriba-Andaluz, C. J. Hogan, *J Chem Phys* **2014**, *141*, 194107.
- (58) N. L. Zakharova, C. L. Crawford, B. C. Hauck, J. K. Quinton, W. F. Seims, H. H. Hill, A. E. Clark, *J Am Soc Mass Spectrom* **2012**, *23*, 792-805.
- (59) D. Hewitt, E. Marklund, D. J. Scott, C. V. Robinson, A. J. Borysik, *J Phys Chem B* **2014**, *118*, 8489-8495.
- (60) C. J. Hogan, J. Fernandez de la Mora, *J Am Soc Mass Spectrom* **2010**, *21*, 1382-1386.
- (61) C. J. Hogan, J. Fernandez de la Mora, *Phys Chem Chem Phys* **2009**, *11*, 8079-8090.
- (62) J. Fernández-García, J. Fernández de la Mora, *J Am Soc Mass Spectrom* **2013**, *24*, 1872-1889.
- (63) J. Fernández-García, J. Fernández de la Mora, *Phys Chem Chem Phys* **2014**, *16*, 20500-20513.
- (64) J. Rus, D. Moro, J. A. Sillero, J. Royuela, A. Casado, F. Estevez-Moliner, J. Fernandez de la Mora, *Int J Mass Spectrom* **2010**, *298*, 30-40.
- (65) J. Fernandez de la Mora, L. de Juan, T. Eichler, J. Rosell, *Trac-Trend Anal Chem* **1998**, *17*, 328-339.
- (66) P. Dugourd, R. R. Hudgins, D. E. Clemmer, M. F. Jarrold, *Rev. Sci. Instrum.* **1997**, *68*, 1122-1129.
- (67) S. L. Koeniger, S. I. Merenbloom, S. J. Valentine, M. F. Jarrold, H. R. Udseth, R. D. Smith, D. E. Clemmer, *Anal Chem* **2006**, *78*, 4161-4174.
- (68) S. I. Merenbloom, S. L. Koeniger, S. J. Valentine, M. D. Plasencia, D. E. Clemmer, *Anal Chem* **2006**, *78*, 2802-2809.
- (69) C. S. Hoaglund, S. J. Valentine, C. R. Sporleder, J. P. Reilly, D. E. Clemmer, *Anal Chem* **1998**, *70*, 2236-2242.
- (70) A. E. Counterman, S. J. Valentine, C. A. Srebalus, S. C. Henderson, C. S. Hoaglund, D. E. Clemmer, *J Am Soc Mass Spectrom* **1998**, *9*, 743-759.

(71) *Ionic Liquid Database*. Available from:
<http://ilthermo.boulder.nist.gov/>.

(72) N. L. Allinger, *J Am Chem Soc* **1977**, *99*, 8127-8134.

(73) P. G. Tait *Scientific papers, Vol. II.*; The Cambridge University Press., Cambridge **1900**.

(74) A. T. J. Hayward, *Br J Appl Phys* **1967**, *18*, 965-977.

(75) C. Larriba, Y. Yoshida, J. Fernández de la Mora, *J Phys Chem B* **2008**, *112*, 12401-12407.

(76) H. Tammet, *J Aerosol Sci* **1995**, *26*, 459-475.

(77) C. N. Davies, *Proc Phys Soc* **1945**, *57*, 259-270.

(78) D. R. Oberreit, P. H. McMurry, C. J. Hogan, *Phys Chem Chem Phys* **2014**, *16*, 6968-6979.

(79) A. Maiber, V. Premnath, A. Ghosh, T. A. Nguyen, M. Attoui, C. J. Hogan, *Phys Chem Chem Phys* **2011**, *13*, 21630-21641.

(80) A. J. Borysik, C. V. Robinson, *Phys Chem Chem Phys* **2012**, *14*, 14439-14449.

(81) Z. Li, H. Wang, *Phys Rev E* **2003**, *68*, 061206.

(82) F. A. Fernandez-Lima, C. Becker, K. Gillig, W. K. Russell, M. A. C. Nascimento, D. H. Russell, *J Phys Chem A* **2008**, *112*, 11061-11066.

GRAPHICAL ABSTRACT

