

ChemComm

Accepted Manuscript



This is an *Accepted Manuscript*, which has been through the Royal Society of Chemistry peer review process and has been accepted for publication.

Accepted Manuscripts are published online shortly after acceptance, before technical editing, formatting and proof reading. Using this free service, authors can make their results available to the community, in citable form, before we publish the edited article. We will replace this *Accepted Manuscript* with the edited and formatted *Advance Article* as soon as it is available.

You can find more information about *Accepted Manuscripts* in the [Information for Authors](#).

Please note that technical editing may introduce minor changes to the text and/or graphics, which may alter content. The journal's standard [Terms & Conditions](#) and the [Ethical guidelines](#) still apply. In no event shall the Royal Society of Chemistry be held responsible for any errors or omissions in this *Accepted Manuscript* or any consequences arising from the use of any information it contains.

Phosphorescent columnar hybrid material containing polyionic inorganic nanoclusters

Received 00th January 20xx,
Accepted 00th January 20xx

S. K. Nayak,^a M. Amela-Cortes,^a M. M. Neidhardt,^b S. Beardsworth,^b J. Kirres,^b M. Mansueto,^b S. Cordier,^a S. Laschat^{*b} and Y. Molard^{*a}

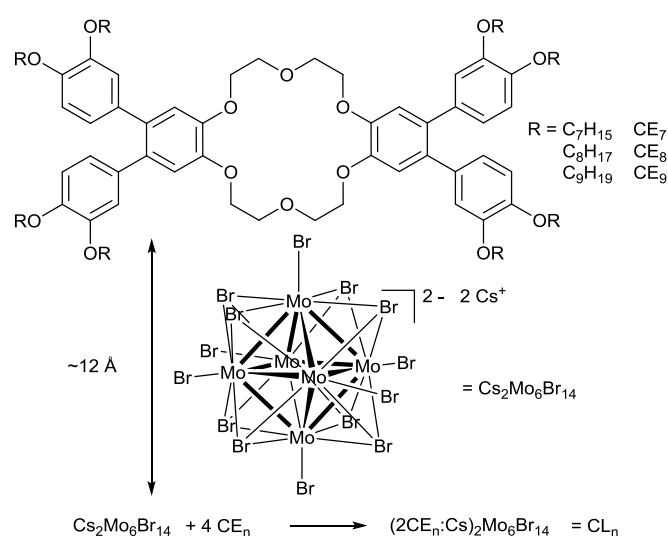
DOI: 10.1039/x0xx00000x

www.rsc.org/

Ternary polyionic inorganic compound $\text{Cs}_2\text{Mo}_6\text{Br}_{14}$ and 18-crown-6 ethers bearing two *o*-terphenyl units have been combined to design phosphorescent columnar liquid crystalline hybrid materials. The obtained host-guest complexes are very stable even at high temperatures. Depending on their surrounding atmosphere, these hybrids switch reversibly from a high to a low luminescent state and show a very stable emission intensity up to 140°C.

Columnar liquid crystals (CLC) have attracted much interest in materials chemistry since 1977 when Chandrasekhar discovered them during his studies of discotic benzene hexaalkanoates.¹ These materials self-organise spontaneously usually into columns, show self-healing properties and have shown to be useful in the design of many devices including photovoltaic solar cells, field effect transistors, one dimensional conductors and light emitting diodes.² It was also found that non disk-shaped molecules can form columnar mesophases. Recently, they were also used to organise small amounts of bulky inorganic components such as gold nanoparticles,³ gold nanorods,⁴ or quantum dots over wide ranges.⁵ Adding new functionalities to CLC, like *e.g.* phosphorescence, appears then particularly appealing in terms of application prospects but still remains very challenging in terms of LC phase or emission stability. We present herein the first hybrid CLC containing up to 34.4 wt% of polyionic, bulky, transition metal cluster (TMC) salts. TMC are aggregates of metal atoms linked by metal-metal bonds.⁶ In particular, octahedral TMC based compounds of the general formula $\text{A}_n\text{M}_6\text{X}_i^a\text{X}^a_6$ where A = alkali cation, M = Mo or Re, X^i = halogen or chalcogen, X^a = halogen or organic ligands are known for their phosphorescence with evidenced dual emission

for $\text{Cs}_2\text{Mo}_6\text{Br}_{14}$.⁷ We recently developed three strategies to integrate these isotropic emitters in smectic or nematic and cholesteric LC.^{8, 9} However, up to now, TMC containing CLC remain unknown. To design such self-assembling materials, we present herein a supramolecular approach in which the nanocluster alkali counter cations are complexed within the cavity of 18-crown-6 ether derivatives CE_n that were previously used by some of us to design CLC (**Scheme 1**).¹⁰ Indeed, although the LC properties of CE_n ligands and their respective complexes with monocharged species have been studied,¹¹ we report for the first time the use and the influence of bulky polyionic inorganic species on the mesomorphic properties of CE_n as well as the surprising influence of the supramolecular organization on the hybrids luminescence properties. The dibenzo[18]crown-6 derivatives CE_n with two lateral tetraalkyloxy *o*-terphenyl units, as well as the $\text{Cs}_2\text{Mo}_6\text{Br}_{14}$ cluster ternary salt, were prepared according to the reported procedure with conforming analytical data.^{10,12}



Scheme 1. Representation of CE_n ligands, $\text{Cs}_2\text{Mo}_6\text{Br}_{14}$ and reaction leading to CL_n complexes.

^a Université de Rennes 1 – CNRS UMR 6226 “Institut des Sciences Chimiques de Rennes”, Campus de Beaulieu, CS 74205, 35042 Rennes Cedex, France; yann.molard@univ-rennes1.fr

^b Institute of Organic Chemistry, University of Stuttgart, Pfaffenwaldring 55, 70569, Stuttgart, Germany; Sabine.Laschat@oc.uni-stuttgart.de
Electronic Supplementary Information (ESI) available: experimental details, DSC traces, POM micrographs, SAXS and WAXS patterns, temperature dependent emission spectra, video of CL_n under irradiation with alternatively a air or inert atmosphere. See DOI: 10.1039/x0xx00000x

This TMC salt was chosen for its high thermal stability, a prerequisite for developing new classes of clusters containing thermotropic hybrid materials. Complexes were obtained by mixing 1 equivalent of $\text{Cs}_2\text{Mo}_6\text{Br}_{14}$ dissolved in acetone with 4 equivalents of CE_n dissolved in dichloromethane. The reaction mixture was then stirred at 50°C for 14 hours. After solvents evaporation, the residue was taken up in dichloromethane to remove, by filtration through a microfilter, any traces of unreacted TMC, and heated under high vacuum to yield the respective dry complexes $(2\text{CE}_n:\text{Cs})_2\text{Mo}_6\text{Br}_{14} = \text{CL}_n$. Their purity was verified by elemental analysis (ESI). ^1H NMR experiments performed on free CE_n and their respective complexes CL_n did not reveal many changes due to the Cs^+ complexation within the crown ether cavity (ESI, Fig S1 and S2). Only a slight upfield shift of signals corresponding to the methylene groups of the crown ring from 4.26 ppm to 3.96 ppm was observed upon complexation. This shift could be due to 1) a small decrease in the dihedral angle of the $\text{OCH}_2\text{CH}_2\text{O}$ fragment upon ion complexation to accommodate the bulky Cs^+ cation and 2) an electric field caused by the presence of the salt. It is noteworthy that the complexation of smaller ions such as K^+ within the macrocyclic cavity induced the opposite effect.¹¹ As previously observed,⁹ it is mandatory to keep a $\text{Cs}:\text{CE}_n$ ratio of 1:2 in order to maintain a full homogeneity of the cluster salt/ CE_n complex. The LC properties of hybrids were studied by polarized optical microscopy (POM), differential scanning calorimetry (DSC, ESI fig S4-S6) and, small and wide angle X-ray scattering (SAXS, WAXS, ESI fig S7-S14), the results of which are shown in **Table 1**. All complexes show enantiotropic LC phases extending over a wide temperature range. This behaviour largely contrasts with the native CE_n precursor, for which LC phases were observed at lower temperatures and over narrower ranges. However, the increase in the mesophase stability as compared to the parent CE_n precursor is similar to the one encountered when soft anions such as iodide, or bridging anions such as hexafluorophosphate or thiocyanate were used to counterbalance the positive charge of a potassium cation embedded within the crown cavity.¹¹ This unexpected result is of particular interest as host-guest complexes between the small 18-crown-6 cavity and the sterically demanding Cs^+ cation are usually supposed to be weak. It could eventually be attributed to the polyionic character of the TMC salt and the strong interactions existing between the complexed Cs^+ and $[\text{Mo}_6\text{Br}_{14}]^{2-}$ dianion which insure a better stability of the supramolecular assemblies upon heating. Surprisingly, the DSC thermogram of CL_8 reveals, upon heating, the formation of two LC phases, whereas on cooling, only one first order transition corresponding to the isotropic-to-LC phase transition is observed (ESI, Fig. S5). **Figure 1** shows the optical fan-shaped focal conic textures observed upon cooling for all samples, which are typical indicators of columnar mesophases. Heating CL_8 from 100°C up to 160°C did not lead to a noticeable change in the observed textures. Irradiating the samples with UV light illustrates their excellent homogeneity thanks to the well-known red NIR emission of TMC (*vide infra*). The same experiments performed at 200°C also reveal a very good homogeneity showing that the interactions between the crown

centre and Cs^+ cations are strong enough to maintain the complex's integrity even at very high temperatures (ESI, Fig S3)). SAXS and WAXS patterns recorded at 127°C, 119°C and 131°C for CL_7 , CL_8 and CL_9 respectively, contained sharp and intense reflections in the small angle region. We first analysed the XRD data, to investigate possible lamello-columnar packings, examples of which were independently reported by Donnio, Ziessel and Marcellis for metallomesogens,¹³ donor-acceptor-triads,¹⁴ side-chain LC polymers¹⁵ or triazines with pendant triphenylenes.¹⁶ We first checked whether sharp Bragg reflections indicating a smectic order were present for complexes CL_n . However, neither characteristic layer reflections in the SAXS diffractogram, nor the second halo in the wide angle region were visible. Thus, a lamello-columnar phase or a coexisting lamellar and columnar packing could be ruled out.

Table 1. Thermodynamic and X-ray diffraction data for CL_n compounds

	Transition	T / °C	$\Delta C_p / \Delta H$	Mesophase	Lattice spacing [Å]
CL_9	Cr→Col _r	129.8	7.28 ^b	Col _r 131°C p2mm	a = 66.3 b = 44.4 h = 4.0 Z = 1
	Col _r →I	150.8 (148.7) ^c	2.36 ^b		
CL_8	g→Col _r	91.6	0.43 ^a	Col _r 119°C p2mm	a = 62.5 b = 43.8 h = 4.5 Z = 1
	Col _r →Col _h	146.6	2.54 ^b	Col _h 150°C p6mm	a = 35.5 h = 4.5 Z = 1
	Col _h →I	164.4 (162.2) ^c	2.50 ^b		
CL_7	g→Col _r	96.8 (96.9)	0.141 ^a	Col _r 127°C p2mm	a = 63.1 b = 43.0 h = 4.4 Z = 1
	Col _r →I	159.2 (147.9) ^c	2.19 ^b		

[a] in $\text{kJ mol}^{-1} \text{K}^{-1}$. [b] in kJ mol^{-1} [c] observed on cooling from the isotropic state; Cr: crystalline state, Col_r: columnar rectangular; Col_h: columnar hexagonal; I: isotropic state

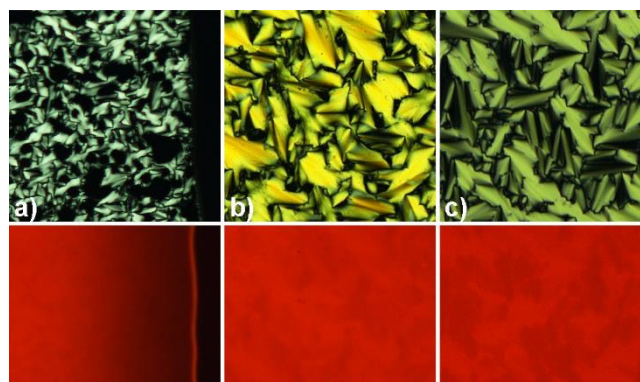


Figure 1. Polarized Optical Micrographs of a) CL_9 (T = 150°C), b) CL_8 (T = 163°C) and c) CL_7 (T = 150°C) under white light (top) and UV irradiation (bottom)

Hence, the indexations of observed patterns allowed the identification of a rectangular columnar phase with $p2mm$ symmetry for the three complexes (see Table S1-S4 for a full indexation). All WAXS patterns contained a broad and large signal around 4.4 Å arising from the fluid-like behaviour of the molten alkyl chains and from the stacking of the aromatic units within the columns confirming the liquid crystalline nature of all complexes. For **CL₈**, additional measurements were performed at 150°C to characterize the unexpected second mesophase detected via DSC upon heating. Three signals with reciprocal d-spacings in the ratio 1:1/√3:1/2 were observed in the SAXS pattern and are in good accordance with the formation of a 2D hexagonal lattice with a $p6mm$ symmetry (Col_h). In this case, the unit cell parameter ($a = 35.5$ Å) was calculated by looking at the (10) reflection. Comparison of previously published XRD data for metal-free crown ether **CE₁₁**¹⁷ with those for **CL_n** (Table 1) revealed that the symmetry of the Col_r lattice changed upon complexation. While the lattice parameter a remains relatively unaffected, i.e. 66.1 Å (**CE₁₁**) vs. 66.3 Å (**CL₉**) despite the difference of 2 CH₂ units in the side chain, the b values almost doubled from 25.1 Å (**CE₁₁**) to 44.4 Å (**CL₉**). Halos were in a similar range (4.6 Å vs. 4.0 Å). To rationalize these results, we propose that the nanocluster, because of its bulkiness, cannot be accommodated within the $c2mm$ lattice of **CE_n**, resulting in a $p2mm$ lattice with elongated b axis, so that the cluster fits in the centre of the unit cell and is surrounded by 4 stacks of crown ethers **CE₉** with intracolumnar distance of 4 Å (Figure 2). This, results in a height of 12 Å for the unit cell and the (1 : 4) cluster/**CE₉** stoichiometry is maintained. In that case the inorganic moieties volumic fraction is around 9 vol%. For the corresponding Col_h phase of **CL₈**, the observed a value should allow a hexagonal packing of the discotic crowns **CE₈**, while each $Mo_6Br_{14}^{2-}$ unit is encapsulated by three crowns and leads to a volumic fraction of 22 vol% for $Cs_2Mo_6Br_{14}$.

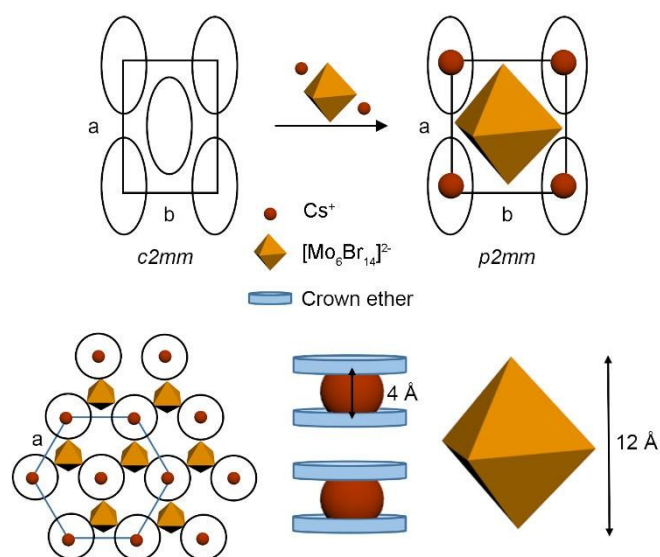


Figure 2 Proposed packing models of **CL_n** compounds in the Col_r (top, $n = 7-9$) and Col_h (bottom, $n = 8$) mesophase. Repartition of Cs^+ is statistical.

As expected, the emission properties of $[Mo_6Br_{14}]^{2-}$ are retained within the hybrid materials (see ESI Fig S15).¹⁸ Photoluminescence spectra ($\lambda_{exc} = 380$ nm) show a broad and intense band extending from 550 nm up to 950 nm. The influence of the hybrid nanostructures on the inorganic emitter emission was investigated by temperature-dependent luminescence studies. Samples were heated up to the isotropic state and slowly cooled to reach a nanostructured glassy or crystalline state at 25°C prior to measurements. The phosphorescence signals were collected at every degree on heating (see ESI fig S16-S17). As previously reported,¹⁹ if the emission intensity variation upon heating is only due to an increase of non-radiative deactivation processes, it should follow an exponential law of the type: $I(T) = I_0 \exp(-A/T)$ where A is constant and I_0 the emission intensity at a given temperature. Thus, reporting $\ln(I/I_{300}) = f(1/T)$ should give a straight line and this is what is observed for $Cs_2Mo_6Br_{14}$ (Figure 3). Surprisingly, increasing the temperature from 25°C up to 140°C does not have much effect on the hybrid materials' ability to emit light as only an emission intensity loss of less than 10% was recorded (the intensity loss at 140°C is about 77% for $Cs_2Mo_6Br_{14}$ in its powder form). At higher temperatures, the obtained curves significantly deviate from the straight line with a similar behaviour for **CL₇** and **CL₉**. The separation of clusters from each other by isolating triangular arrays of crown ethers might be the reason for the increased luminescence intensity of **CL₈** in the high temperature Col_h phase as compared to the low temperature Col_r phase. Presumably, the crown ethers act as an isolating matrix for luminescent clusters, making these hybrids attractive alternatives regards to polymers for applications requiring temperatures around 100°C.²⁰ Thus, the columnar nanostructures have a strong influence on the hybrids emissive ability despite the isotropic nature of the inorganic emitter. Let us emphasize that such unprecedented high stability of the emission intensity vs temperature is particularly rare and has never been reported so far for TMC or TMC-containing hybrid materials.

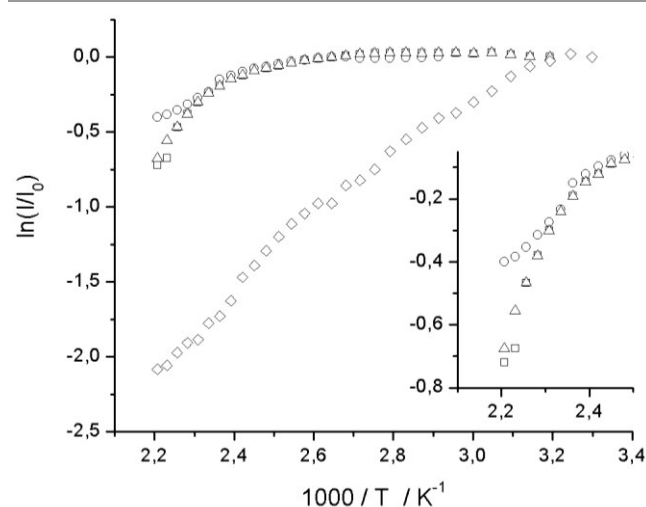


Figure 3. Evolution of luminescence intensity at 700 nm with temperature for $Cs_2Mo_6Br_{14}$ (diamond), **CL₉** (triangle), **CL₈** (circle) and **CL₇** (square). Inset: zoom of the high temperature area for hybrids.

As illustrated by absolute quantum yield measurements performed in air or N₂ atmosphere, the emission intensity can also be modulated by modifying the local atmosphere of the material. In all cases, a reversible and instantaneous switch from 0.05 or 0.07 in air up to 0.20, 0.26 or 0.30 in N₂ atmosphere was measured for **CL**₇, **CL**₈ and **CL**₉, respectively, (Figure S18 and video S1). This phenomenon which shows that these materials might be used as efficient oxygen sensors, is due to the O₂ permeability of CL_n and is based on the ability of the phosphorescent metal clusters excited states to be quenched by molecular triplet oxygen, thus creating singlet oxygen.²¹ Although we demonstrated recently the same effect when nanoclusters are introduced in gas-permeable polymer matrices,²² this is the first time that such behaviour is reported in a liquid crystalline material.

In conclusion, we show herein, that nanometric luminescent transition metal cluster compounds are easily integrated in a CLC hybrid material by using a supramolecular approach. In these materials, Cs⁺ cluster unit counter cations are complexed within the cavity of crown ether derivatives functionalized by *o*-terphenyl units that are well known to generate columnar liquid crystalline phases. We show that the introduction of cluster salts results in columnar rectangular phases of *p2mm* symmetry and that their thermal stability is largely enhanced as compared to the parent crown ether **CE**_n. Surprisingly, a second columnar hexagonal phase was observed on heating for **CL**₈. Luminescence studies reveal that the red NIR clusters emission stability upon heating is unexpectedly largely enhanced as compared to its precursor namely Cs₂Mo₆Br₁₄. Moreover, we demonstrate for the first time that modifying the atmosphere surrounding the LC hybrids with an inert gas induces a large, instantaneous and reversible increase of its emission efficiency thanks to the good O₂ permeability of the LC matrix. The columnar mesophases observed for these novel clustomesogens in combination with their luminescence properties makes them promising candidates for oxygen sensors, optoelectronic or photovoltaic devices. As a further step towards such applications, the mesophase temperature ranges need to be lowered by molecular design. Work towards this goal is currently in progress.

This work has been done in the frame of ANR Clustomesogen : ANR-13-BS07-0003-01 and a Marie Curie International Incoming Fellowship within the 7th European Community Framework Program. Both organizations are gratefully acknowledged. The authors also wish to thank Dr. F. Camerel for DSC access and the Fonds der Chemischen Industrie (Kekulé fellowship for S. B) for generous financial support.

References

1. S. Chandrasekhar, B. K. Sadashiva and K. A. Suresh, *Pramana*, 1977, **9**, 471-480.
2. J. W. Goodby, P. J. Collings, T. Kato, C. Tschierske, H. F. Gleeson, P. Raynes and Editors, *Handbook of Liquid Crystals, Volume 8: Applications of Liquid Crystals, 2nd Edition*, Wiley-VCH Verlag GmbH & Co. KGaA, 2014.
3. S. Kumar and V. Lakshminarayanan, *Chem. Commun.*, 2004, DOI: 10.1039/b403794d, 1600-1601.
4. X. Feng, L. Sosa-Vargas, S. Umadevi, T. Mori, Y. Shimizu and T. Hegmann, *Adv. Funct. Mater.*, 2015, **25**, 1180-1192.
5. S. Kumar and L. K. Sagar, *Chem. Commun.*, 2011, **47**, 12182-12184; M. Kumar and S. Kumar, *RSC Adv.*, 2015, **5**, 1262-1267.
6. F. A. Cotton, *Inorg. Chem.*, 1964, **3**, 1217-1220.
7. T. G. Gray, C. M. Rudzinski, D. G. Nocera and R. H. Holm, *Inorg. Chem.*, 1999, **38**, 5932-5933; A. W. Maverick and H. B. Gray, *J. Am. Chem. Soc.*, 1981, **103**, 1298-1300; K. Costuas, A. Garreau, A. Bulou, B. Fontaine, J. Cuny, R. Gautier, M. Mortier, Y. Molard, J.-L. Duvail, E. Faulques and S. Cordier, *Phys. Chem. Chem. Phys.*, 2015, DOI: 10.1039/C5CP03960F.
8. M. Prevot, M. Amela-Cortes, S. k. Manna, S. Cordier, T. Roisnel, H. Folliot, L. Dupont and Y. Molard, *J. Mater. Chem. C*, 2015, **3**, 5152-5161; S. M. Wood, M. Prévôt, M. Amela-Cortes, S. Cordier, S. J. Elston, Y. Molard and S. M. Morris, *Adv. Optical Mater.*, 2015, **3**, 1368-1372; Y. Molard, A. Ledneva, M. Amela-Cortes, V. Circu, N. G. Naumov, C. Meriadec, F. Artzner and S. Cordier, *Chem. Mater.*, 2011, **23**, 5122-5130; Y. Molard, F. Dorson, V. Circu, T. Roisnel, F. Artzner and S. Cordier, *Angew. Chem. Int. Ed. Engl.*, 2010, **49**, 3351-3355.
9. S. K. Nayak, M. Amela-Cortes, C. Roiland, S. Cordier and Y. Molard, *Chem. Commun.*, 2015, **51**, 3774-3777.
10. A. Schultz, S. Laschat, A. Saipa, F. Giesselmann, M. Nimtz, J. L. Schulte, A. Baro and B. Miehl, *Adv. Funct. Mater.*, 2004, **14**, 163-168.
11. M. Kaller, S. Tussetschlaeger, P. Fischer, C. Deck, A. Baro, F. Giesselmann and S. Laschat, *Chem. Eur. J.*, 2009, **15**, 9530-9542.
12. K. Kirakci, S. Cordier and C. Perrin, *Z. Anorg. Allg. Chem.*, 2005, **631**, 411-416.
13. M. Stepien, B. Donnio and J. L. Sessler, *Chem. - Eur. J.*, 2007, **13**, 6853-6863; T. Cardinaels, K. Driesen, T. N. Parac-Vogt, B. Heinrich, C. Bourgogne, D. Guillon, B. Donnio and K. Binnemans, *Chem. Mater.*, 2005, **17**, 6589-6598; R. Ziessel, L. Douce, A. El-Ghayoury, A. Harriman and A. Skoulios, *Angew. Chem., Int. Ed.*, 2000, **39**, 1489-1493; A. El-Ghayoury, L. Douce, A. Skoulios and R. Ziessel, *Angew. Chem., Int. Ed.*, 1998, **37**, 1255-1258.
14. K.-Q. Zhao, L.-L. An, X.-B. Zhang, W.-H. Yu, P. Hu, B.-Q. Wang, J. Xu, Q.-D. Zeng, H. Monobe, Y. Shimizu, B. Heinrich and B. Donnio, *Chem. - Eur. J.*, 2015, **21**, 10379-10390.
15. I. Tahar-Djebbar, F. Nekelson, B. Heinrich, B. Donnio, D. Guillon, D. Kreher, F. Mathevet and A.-J. Attias, *Chem. Mater.*, 2011, **23**, 4653-4656.
16. C. P. Umesh, A. T. M. Marcelis and H. Zuilhof, *Liquid Crystals*, 2015, **42**, 1450-1459.
17. M. Kaller, C. Deck, A. Meister, G. Hause, A. Baro and S. Laschat, *Chem. Eur. J.*, 2010, **16**, 6326-6337.
18. S. Cordier, Y. Molard, K. A. Brylev, Y. V. Mironov, F. Grasset, B. Fabre and N. G. Naumov, *J. Cluster Sci.*, 2015, **26**, 53-81; S. Cordier, F. Grasset, Y. Molard, M. Amela-Cortes, R. Boukherroub, S. Ravaine, M. Mortier, N. Ohashi, N. Saito and H. Haneda, *J. Inorg. Organomet. Polym. Mater.*, 2015, **25**, 189-204; M. Amela-Cortes, A. Garreau, S. Cordier, E. Faulques, J.-L. Duvail and Y. Molard, *J. Mater. Chem. C*, 2014, **2**, 1545-1552.
19. S. Suarez, O. Mamula, D. Imbert, C. Pigué and J. C. G. Bunzli, *Chem. Commun.*, 2003, 1226-1227.
20. M. Shi, Y. Guan, J. Zhang and X. Wang, *RSC Adv.*, 2015, **5**, 34900-34907.
21. J. A. Jackson, M. D. Newsham, C. Worsham and D. G. Nocera, *Chem. Mater.*, 1996, **8**, 558-564; J. A. Jackson, C. Turro, M. D. Newsham and D. G. Nocera, *J. Phys. Chem.*, 1990, **94**, 4500-4507.
22. M. Amela-Cortes, S. Paofai, S. Cordier, H. Folliot and Y. Molard, *Chem. Commun.*, 2015, **51**, 8177-8180.