

ChemComm

Accepted Manuscript



This is an *Accepted Manuscript*, which has been through the Royal Society of Chemistry peer review process and has been accepted for publication.

Accepted Manuscripts are published online shortly after acceptance, before technical editing, formatting and proof reading. Using this free service, authors can make their results available to the community, in citable form, before we publish the edited article. We will replace this *Accepted Manuscript* with the edited and formatted *Advance Article* as soon as it is available.

You can find more information about *Accepted Manuscripts* in the [Information for Authors](#).

Please note that technical editing may introduce minor changes to the text and/or graphics, which may alter content. The journal's standard [Terms & Conditions](#) and the [Ethical guidelines](#) still apply. In no event shall the Royal Society of Chemistry be held responsible for any errors or omissions in this *Accepted Manuscript* or any consequences arising from the use of any information it contains.

The Crystalline Sponge Method: MOF Terminal Ligand Effects

 Timothy R. Ramadhar,^a Shao-Liang Zheng,^b Yu-Sheng Chen^c and Jon Clardy^{*a}

 Received 00th January 20xx,
Accepted 00th January 20xx

DOI: 10.1039/x0xx00000x

www.rsc.org/

Bromide and chloride analogs of the commonly used zinc iodide-based metal organic framework for the crystalline sponge method were synthesized and evaluated. Inclusion of (1R)-(-)-menthyl acetate into these MOFs was analysed using third-generation synchrotron radiation, and the effects and potential benefits of varying the MOF terminal ligand are discussed.

The applicability of single crystal X-ray diffraction (SC-XRD) for structural analysis is limited by its requiring a single crystal of the material to be analysed. Fujita and co-workers have recently described a method that could bypass this requirement by using a crystal of a metal organic framework (MOF) to orient host molecules in a preformed MOF crystal. Their approach is called the crystalline sponge method,¹ and the most widely used MOF sponge is $\{[(ZnI_2)_3(\text{tris}(4\text{-pyridyl})\text{-}1,3,5\text{-triazene})_2] \cdot x(\text{solvent})\}_n$ (**1a**) (Figure 1).² In addition to providing a crystalline host for difficult to crystallize guests, this sponge's heavy atoms allow for the absolute stereochemical determination of chiral guests with only light atoms through anomalous dispersion using MoK α radiation – an important feature for the structure determination of naturally occurring small molecules. The original report was met with enthusiasm³ and subsequent studies illustrated its utility,⁴ but the approach's crystallographic quality, as highlighted by the incorrect stereochemical determination of miyakosyne A,⁵ has also been criticized.⁶ We previously reported an improved MOF synthetic procedure and the establishment of crystallographic guidelines that were derived from probing the systems with high-flux synchrotron radiation.⁷

Thus far, all prior crystalline sponge reports have typically used a zinc-based MOF with an iodide terminal ligand (**1a**).^{1,4,7} The

crystallographic data to be analysed contains contributions from both the host and guest, and the host makes the greatest contribution. We were interested in knowing whether changing the terminal ligand from iodide to bromide (**1b**)⁸ or chloride (**1c**), would simplify locating and modelling guest molecules since the lower electron count for bromide and chloride would increase the relative contribution of the guest, and other benefits would generally be imparted such as a reduction in X-ray absorption and lower diffuse scattering contribution to the background. Herein we communicate the synthesis, effects, and potential benefits of varying the crystalline sponge terminal ligand.

MOF crystals **1b** and **1c** were synthesized through a derivative procedure,⁷ where ZnBr₂ and ZnCl₂, respectively, was used in place of ZnI₂. The crystals were grown in a bilayer of CHCl₃ and MeOH for 7 days in order to maximize crystal yield. This procedure led to the synthesis of high-quality MOF crystals and yielded a higher proportion of prismatic crystals versus those grown using ZnI₂ where more thin sheets and twinned microcrystals were present.⁷ Crystals of **1b** and **1c** with CHCl₃ solvent ("blank crystals") exhibited weaker diffraction compared to the analogous crystals of **1a**; thus, use of high-flux synchrotron radiation is beneficial for full data collection. Unit cell measurements for the **1b** and **1c** blank crystals were obtained on an in-house diffractometer, and in a similar manner to the **1a** blank crystals,⁷ **1b** and **1c** exhibited a centrosymmetric monoclinic C2/c space group and the unit cell dimensions were also similar.

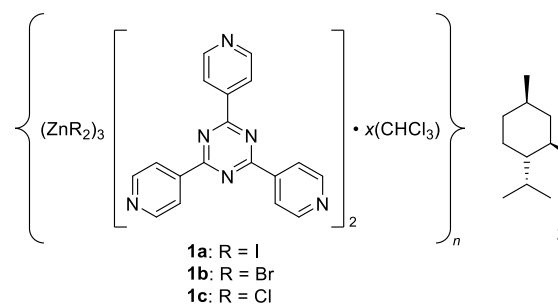


Figure 1. Crystalline sponges with various terminal halide ligands and (1R)-(-)-menthyl acetate guest employed in the current study.

^a Department of Biological Chemistry and Molecular Pharmacology, Harvard Medical School, 240 Longwood Avenue, Boston, Massachusetts, 02115, USA. E-mail: jon_clardy@hms.harvard.edu; Fax: +1-617-432-3790

^b Department of Chemistry and Chemical Biology, Harvard University, 12 Oxford Street, Cambridge, Massachusetts, 02138, USA.

^c ChemMatCARS, Center for Advanced Radiation Sources, The University of Chicago c/o Advanced Photon Source, Argonne National Laboratory, 9700 South Cass Avenue, Argonne, Illinois, 60439, USA.

† Electronic Supplementary Information (ESI) available: Experimental and crystallographic procedures, and data tables. CCDC 1063685, 1063686. For ESI and crystallographic data in CIF see DOI: 10.1039/x0xx00000x

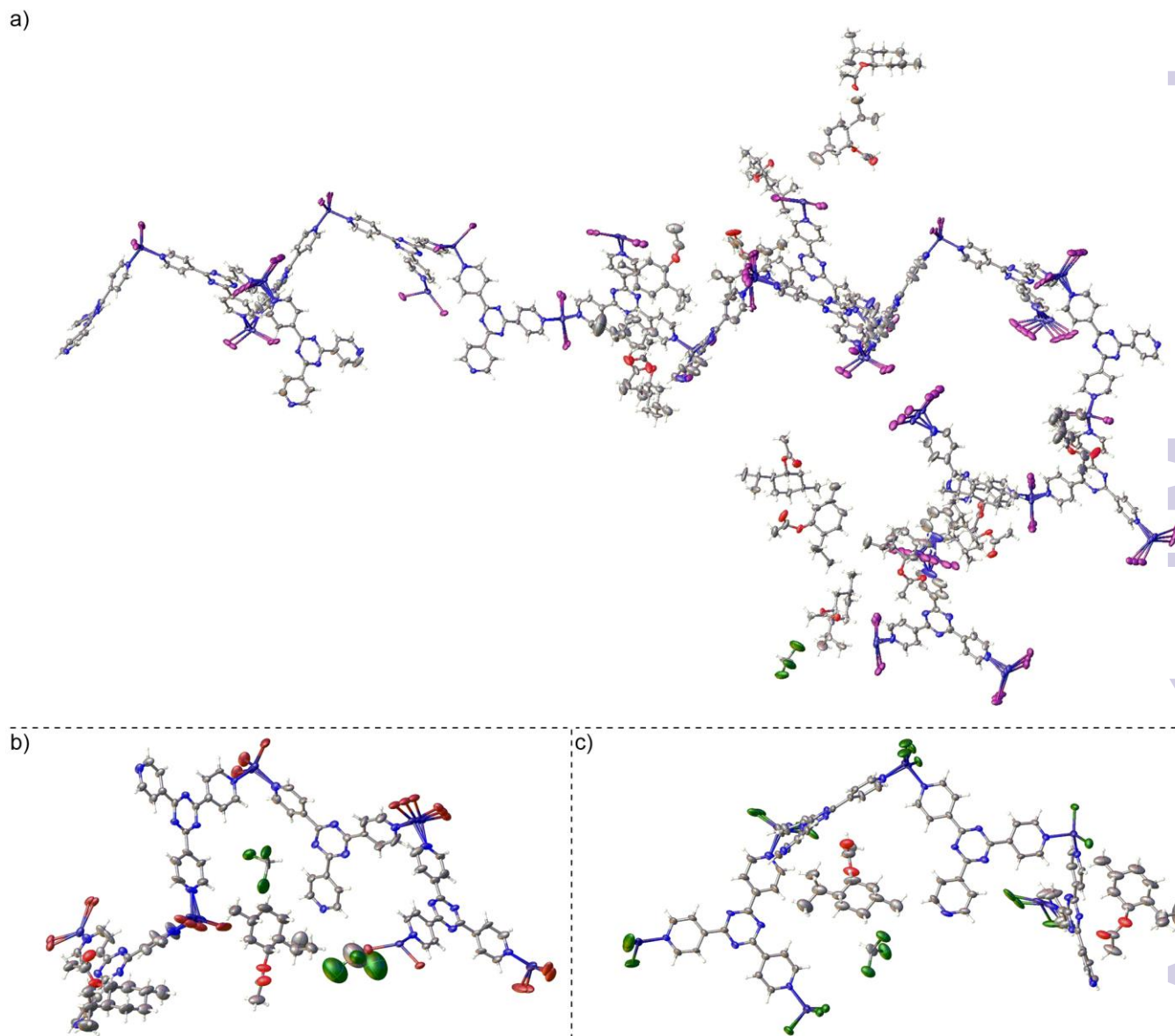


Figure 2. Asymmetric unit for host-guest complexes (a) **1a2** containing 601 non-H atoms (ref. 7, CCDC 1007930), (b) **1b2** containing approximately 140 non-H atoms (CCDC 1063685), and (c) **1c2** containing approximately 142 non-H atoms (CCDC 1063686)

We then performed the inclusion experiment with chiral target *1R*-(-)-menthyl acetate (**2**), which was also used in our previous study with **1a** to afford host-guest complex **1a2** (Figure 2a).⁷ The soaking experiment for the **1b** and **1c** blank crystals with **2** was performed in the same manner as with the **1a** blank crystals, where neat guest was added to submerge the crystals for 2 d at ambient temperature. The resulting host-guest complexes **1b2** and **1c2** were then subjected to SC-XRD using high-flux synchrotron radiation with an irradiation wavelength of ~ 0.41 Å (as an aside, X-ray fluorescence was also observed). In our original study in which **2** was introduced into **1a**, the unit cell *c*-axis of the sponge approximately doubled to 66.990(6) Å and the space group symmetry decreased from *C2/c* to non-centrosymmetric monoclinic *P2₁* affording 601 non-H atoms in the asymmetric unit including disorder (**1a2**).⁷ However, inclusion of **2** within **1b** and **1c** did not

lead to a similar unit cell expansion. Furthermore the space group symmetry decreased less as non-centrosymmetric monoclinic *C2/c* for **1b2** and **1c2** was afforded versus *P2₁* for **1a2**. It should be noted that the combined figure of merit (CFOM) based upon the statistical distribution of the normalised structure factors ($\langle |E^2-1| \rangle$) for **1b2** slightly favoured the space group choice of *C2/c* versus *C2*; thus, it was necessary to force data processing in the latter space group and respective point group.

The combined result of not expanding the unit cell and a high space group symmetry led to asymmetric units containing approximately 140 and 142 non-H atoms for **1b2** and **1c2** respectively, versus 601 non-H atoms for **1a2**,⁷ with all cases involving disorder (Figure 2). The quantity of combined geometric and anisotropic displacement parameter restraints invoked for **1b2** and **1c2** are 95 and 80, respectively, versus 1137 for **1a2**. The

absolute configuration parameters based upon anomalous dispersion for **1b2** and **1c2** unambiguously confirm the absolute stereochemistry of **2** (**1b2**: Flack $x = 0.054(19)$, Hooft $y = 0.026(19)$; **1c2**: Flack $x = 0.05(2)$, Hooft $y = 0.031(19)$).^{10,11} Furthermore, solvent accessible void electron density was not treated in **1b2** or **1c2** using PLATON/SQUEEZE¹² or the Olex2 solvent mask.¹³ While the use of programs such as PLATON/SQUEEZE to treat residual density in solvent accessible voids affords lower refinement statistics in these systems, the analogous statistics without treating the residual density pass validation tests (no level A/B checkCIF alerts were afforded in this regard). Furthermore, previously reported guidelines for the crystalline sponge method state that a more realistic chemical representation of the system is afforded if residual density is not treated and that the use of these programs on these systems are best avoided if the R_1 and wR_2 refinement statistics are reasonable.⁷ Residual density from highly-disordered guest and solvent molecules are expected for the crystalline sponge systems by nature of the method.

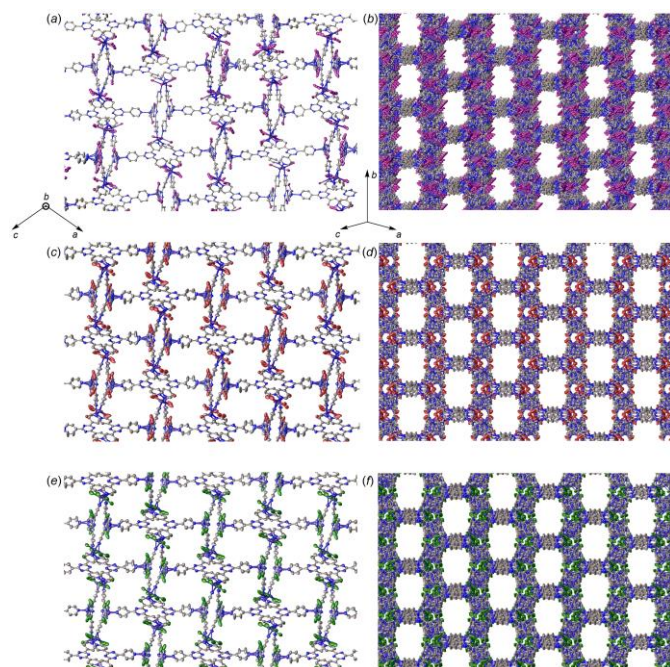


Figure 3. Views of the pores from different orientations within **1a2** (a), (b) (directly reproduced from ref. 7), **1b2** (c), (d), and **1c2** (e), (f). Hydrogen atoms and guest molecules are hidden for clarity.

In both **1b2** and **1c2**, two partially occupied guest molecules of **2** and residual chloroform solvent molecules (two in **1b2**, one in **1c2**) were observed in the asymmetric unit whereas 14 partially occupied target **2** and one residual chloroform was observed in **1a2**.⁷ Disorder of the terminal halide and zinc was observed and modelled on the host framework of **1b2** and **1c2**. The R_1 and wR_2 refinement statistics for **1b2** ($R_1 = 7.10\%$, $wR_2 = 22.98\%$) and **1c2** ($R_1 = 8.47\%$, $wR_2 = 27.30\%$) are comparable to **1a2** ($R_1 = 6.19\%$, $wR_2 = 19.09\%$) albeit slightly larger. Since the host framework in **1b2** and **1c2** has proportionally lower contribution to the structure factors compared to **1a2**, guest and residual solvent electron density is more readily observed, and modelling of the well-defined guests

was straightforward with minimal soft restraints. However, residual electron density from severely disordered guest and solvent molecules that is readily visible but cannot be reasonably modelled as per previously reported guidelines,⁷ will inflate the R_1 and wR_2 refinement statistics, and lead to slightly larger absolute configuration parameters. Conversely, proportionally greater scattering contributions from the host in **1a2** originating from the higher electron count of the iodine atoms leads to highly disordered guest and residual solvent becoming more easily lost.

The differences in single-crystal-to-single-crystal transformation¹⁴ for **1a**, **1b**, and **1c** upon inclusion of **2** is particularly intriguing. Unit cell expansion leading to **1a2** yielded a challenging scenario that required ample computational resources to perform least-squares refinement and weeks from initial solution to a structure ready for publication,⁷ which is highly undesirable from a practical standpoint. Moreover, long unit cell axes present a well-known crystallographic challenge that can ultimately affect data quality.¹⁵ Larger detector distances are required to resolve overlapping reflections; however, this leads to substantially weaker reflection intensities, especially in the high-angle shells. Use of longer irradiation wavelengths is an alternate strategy; however, this can make absorption correction difficult if strong absorbers such as iodide are present (and further exacerbated if the crystal habit is a plate or needle), and requires longer collection time to achieve sufficient completeness and redundancy due to a smaller sphere of reflection, spaced reflections, and detector size limitations requiring additional scans with multiple detector offsets. In the case of **1b2** and **1c2**, the lack of both major unit cell expansion and reduction to $P2_1$ symmetry allowed a refinement time of a few hours instead of weeks. The exact origin of this effect in **1b2** and **1c2** is unclear. Since all datasets were collected using synchrotron radiation, determination of systematically absent reflections should be reliable. Visual comparison of the pores within all complexes after guest inclusion shows similar pore geometries albeit with some differences (Figure 3), and void calculation using CalcVoid in Olex2¹³ indicates that the structural component **2** occupies a similar percentage within the unit cell (**1a2**: 36.52%, **1b2**: 35.97%, **1c2**: 35.35%). It is possible that inclusion of **2** within **1b** and **1c** induces a structural framework change that does not necessitate unit cell expansion and a drop to $P2_1$ symmetry.

As the crystalline sponge method undergoes further refinements, a small library of generally but not universally useful sponges will emerge, and this report highlights the utility of varying the terminal ligand. The presented halide analogues can be easily prepared using the method described here, and their ability to affect both the single-crystal-to-single-crystal transformation upon introducing the guest and the concomitant data collection and analysis strategies have been discussed.

We are grateful for financial support through the US National Institutes of Health (U19-AI109673 to J.C. and F32-GM108415 to T.R.R.). ChemMatCARS Sector 15 is principally supported by the Divisions of Chemistry (CHE) and Materials Research (DMR), National Science Foundation, under grant number NSF/CHE-1346572. Use of the Advanced Photon Source, an Office of Science User Facility operated for the US Department of Energy (DOE) Office of Science by Argonne National Laboratory, was supported by the US DOE under Contract No. DE-AC02-06CH11357.

Notes and references

- 1 Y. Inokuma, S. Yoshioka, J. Ariyoshi, T. Arai, Y. Hitora, K. Takada, S. Matsunaga, K. Rissanen and M. Fujita, *Nature*, 2013, **495**, 461.
- 2 K. Biradha and M. Fujita, *Angew. Chem. Int. Ed.*, 2002, **41**, 3392.
- 3 (a) P. Stallforth and J. Clardy, *Nature*, 2013, **495**, 456; (b) E. Callaway, *Nat. News.*, 2013, <http://www.nature.com/news/taking-the-crystals-out-of-x-ray-crystallography-1.12699>; (c) B. Halford, *Chem. Eng. News*, 2013, <http://cen.acs.org/articles/91/i13/Crystal-Free-Crystallography.html>
- 4 (a) Y. Inokuma, S. Yoshioka, J. Ariyoshi, T. Arai and M. Fujita, *Nat. Protoc.*, 2014, **9**, 246; (b) E. V. Vinogradova, P. Müller and S. L. Buchwald, *Angew. Chem. Int. Ed.*, 2014, **53**, 3125; (c) A. G. O'Brien, A. Maruyama, Y. Inokuma, M. Fujita, P. S. Baran and D. G. Blackmond, *Angew. Chem. Int. Ed.*, 2014, **53**, 11868; (d) S. Yoshioka, Y. Inokuma, M. Hoshino, T. Sato and M. Fujita, *Chem. Sci.*, 2015, DOI: 10.1039/C5SC01681A; (e) V. Richards, *Chem. World*, 2015, <http://www.rsc.org/chemistryworld/2015/05/crystal-free-x-ray-crystallography-axial-planar-chirality>.
- 5 Y. Inokuma, S. Yoshioka, J. Ariyoshi, T. Arai, Y. Hitora, K. Takada, S. Matsunaga, K. Rissanen and M. Fujita, *Nature*, 2013, **501**, 262.
- 6 (a) E. Callaway, *Nat. News*, 2013, <http://www.nature.com/news/revolutionary-method-for-probing-molecular-structure-unravels-1.13798>; (b) B. Halford, *Chem. Eng. News*, 2013, <http://cen.acs.org/articles/91/i38/Crystal-Free-Crystallization-Loses-Lustre.html>; (c) A. Extnance, *Chem. World*, 2014, <http://www.rsc.org/chemistryworld/2014/05/mechanism-study-seeks-clear-x-ray-crystalline-flask-cloud>; (d) B. Halford, *Chem. Eng. News*, 2015, <http://cen.acs.org/articles/93/i7/Crystalline-Sponges-Catching-Chemists.html>
- 7 T. R. Ramadhar, S.-L. Zheng, Y.-S. Chen and J. Clardy, *Acta Cryst.*, 2015, **A71**, 46.
- 8 J. Martí-Rujas, N. Islam, D. Hashizume, F. Izumi, M. Fujita, M. Kawano, *J. Am. Chem. Soc.*, 2011, **133**, 5853.
- 9 S. R. Batten and R. Robson, *Angew. Chem. Int. Ed.*, 1998, **37**, 1460.
- 10 S. Parsons, H. D. Flack and T. Wagner, *Acta Cryst.*, 2013, **B69**, 249.
- 11 R. W. W. Hoof, L. H. Straver and A. L. Spek, *J. Appl. Cryst.*, 2008, **41**, 96.
- 12 A. L. Spek, *Acta Cryst.*, 2015, **C71**, 9.
- 13 O. V. Dolomanov, L. J. Bourhis, R. J. Gildea, J. A. K. Howard and H. Puschmann, *J. Appl. Cryst.*, 2009, **42**, 339.
- 14 J.-P. Zhang, P.-Q. Liao, H.-L. Zhou, R.-B. Lin and X.-M. Chen, *Chem. Soc. Rev.*, 2014, **43**, 5789.
- 15 Z. Dauter, *Acta Cryst.*, 1999, **D55**, 1703.