

ChemComm

Accepted Manuscript



This is an *Accepted Manuscript*, which has been through the Royal Society of Chemistry peer review process and has been accepted for publication.

Accepted Manuscripts are published online shortly after acceptance, before technical editing, formatting and proof reading. Using this free service, authors can make their results available to the community, in citable form, before we publish the edited article. We will replace this *Accepted Manuscript* with the edited and formatted *Advance Article* as soon as it is available.

You can find more information about *Accepted Manuscripts* in the [Information for Authors](#).

Please note that technical editing may introduce minor changes to the text and/or graphics, which may alter content. The journal's standard [Terms & Conditions](#) and the [Ethical guidelines](#) still apply. In no event shall the Royal Society of Chemistry be held responsible for any errors or omissions in this *Accepted Manuscript* or any consequences arising from the use of any information it contains.

COMMUNICATION

Kinetics of Intramolecular Chemical Exchange by Initial Growth Rates of Spin Saturation Transfer Difference Experiments (SSTD NMR)

Cite this: DOI: 10.1039/x0xx00000x

Received 00th January 2012,
Accepted 00th January 2012M. Teresa Quirós,^[a] Jesús Angulo*^[b] and María Paz Muñoz*^[a]

DOI: 10.1039/x0xx00000x

We report here the Initial Growth Rates SSTD NMR method, as a new powerful tool to obtain the kinetic parameters of intramolecular chemical exchange in challenging small organic and organometallic molecules.

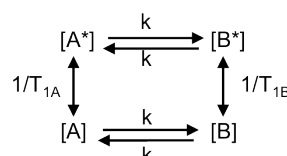
Intramolecular chemical exchange is a common phenomenon in organic molecules, and an important process when studying molecular dynamics.¹ The chemical exchange rate is as useful as any other chemical kinetic parameter, as it is related to the thermodynamics of the barrier of the exchange process. Examples of chemical exchanges in organic chemistry are atropisomerism (e.g. ring flip in biphenyl systems), conformational isomerism in aliphatic compounds or rings, rotation around conjugated bonds (e.g. butadienes), tautomerism, hindered internal rotation (e.g. amide bonds), or redistribution and ligand exchange in metal complexes.

Kinetics of chemical exchange in small molecules have been studied by NMR using mainly two different methods: (i) line-shape analysis,² and (ii) spin saturation transfer experiments (SST).³ Both of them have, however, a number of drawbacks. Line-shape analysis at very high magnetic field can be experimentally of limited applicability, as the coalescence temperature exceeds the boiling points of most solvents.⁴ SST experiments require a steady state saturation transfer between the exchanging sites (very long saturation time), and the experimental determination of the longitudinal relaxation time constant, T_1 , of the monitored spin. The latter measurement can be hampered in spectral regions with significant peak overlap.⁵

Here we propose a new NMR protocol for the easy determination of the kinetics of molecular systems undergoing mutual-site exchange, based on the SST experiment, but avoiding the need to assure steady state conditions and the determination of T_1 values. The method uses difference spectroscopy to measure transient spin saturation transfer along increasing saturation times (build-up curve), and the kinetic rate constant is easily determined from the initial slope from a single set of experiments. The pulse sequence corresponds to that used for protein-ligand interactions by STD NMR spectroscopy.⁶ On these grounds we have called the experiment spin saturation transfer difference (SSTD NMR).

The mutual-site exchange kinetics for two spins A and B (two-site exchange) can be depicted as in Scheme 1 where [A] and [A*], as well as [B] and [B*], are the lower and upper spin-state populations

of spins A and B, respectively, T_{1A} and T_{1B} are the longitudinal relaxation time constants of spins A and B, and k is the mutual-site exchange rate constant.⁷



Scheme 1. Two-site exchange kinetics.

The rate equation for the magnetization of spin A under saturation of spin B (Scheme 1), taking into account both processes of population exchange, relaxation and chemical exchange, is given by:⁷

$$\frac{dM_A}{dt} = -k \cdot M_A + \frac{M_{0A} - M_A}{T_{1A}} \quad (1)$$

Where $M_A = [A] - [A^*]$, $M_B = 0$, and M_{0A} is the magnetization of spin A at thermal equilibrium. Spin saturation of B, carried out by selective low power irradiation centred at its chemical shift, leads to the disappearance of its ^1H NMR signal in the spectrum. Over time, if internal rotation around a single bond leads to site exchange between spins A and B (e.g. *N,N*-dimethylacetamides, see below), saturation is transferred to spin A by chemical exchange, and a decrease in ^1H intensity of spin A will be observed, with a magnitude depending on the time we irradiate spin B (saturation time). For very long saturation times, spin A will reach a steady state in which the spin saturation transfer process is compensated by longitudinal relaxation.

Traditionally, SST experiments have relied on the condition of steady state saturation of spin A, i.e. $dM_A/dt = 0$ (classical “noediff” experiment). Under these conditions, the exchange rate constant, k , is determined using the following equation:⁷

$$k = \frac{1}{T_{1A}} \left(\frac{M_{0A}}{M_A} - 1 \right) \quad (2)$$

This equation shows similarities to the simplified treatment of STD NMR experiments for protein-ligand interactions proposed by Claridge *et al.*⁸ Therefore, SST methodology requires two distinct sets of experiments to be carried out, one saturation experiment with saturation of spin B long enough to reach the saturated steady state of spin A, and a set of inversion-recovery experiments to determine the longitudinal relaxation time constant T_{1A} .

We realized that the method can be reduced to only one type of experiment if we determine the difference spectrum (“equilibrium – saturated” intensity of A) and calculate the fraction of saturation transferred ($M_{0A} - M_A$) over the equilibrium intensity of spin A (M_{0A}). The time evolution of that ratio is given by (see SI for details):

$$\frac{M_{0A} - M_A}{M_{0A}} = \frac{k}{(1/T_{1A} + k)} (1 - \exp(-(1/T_{1A} + k) \cdot t)) \quad (3)$$

We have called this ratio the “spin saturation transfer difference (SSTD) factor”, $\eta_{SSTD} = M_{0A} - M_A / M_{0A}$, by analogy to the STD factor defined in protein-ligand interaction studies by STD NMR spectroscopy. The main difference between SSTD NMR and STD NMR spectroscopy is that in the first case we directly saturate one of the sites in the mutual-site exchange, and that saturation is transferred exclusively by chemical exchange, in contrast to the latter experiment in which, besides the chemical exchange, the existence of dipole-dipole interactions (protein-ligand intermolecular NOE) is a mandatory requisite for the saturation to be transferred, as none of the two states, bound or free, of the ligand protons are directly irradiated.

The evolution of η_{SSTD} for spin A, as a function of the saturation time of spin B is then given by:

$$\eta_{SSTD} = \eta_{SSTD}^{MAX} (1 - \exp(-\delta \cdot t)) \quad (4)$$

Where η_{SSTD}^{MAX} is the η_{SSTD} value at infinite saturation time (steady state of spin A saturation), and δ is a factor that defines how fast that steady state is reached. We have called this factor the dynamic constant, as it corresponds to the addition of the relaxation rate constant and the kinetics rate constant ($1/T_{1A} + k = R_{1A} + k$).

Equation 4 suggests a more direct way of determining the mutual-site exchange rate constant. The initial slope of the curve of η_{SSTD} vs. t is given by:

$$\left. \frac{d\eta_{SSTD}}{dt} \right|_{t=0} = \eta_{SSTD}^{MAX} \cdot \delta = k / \delta \cdot \delta = k \quad (5)$$

Where we have made use of $\eta_{SSTD}^{MAX} = k / \delta$. That is, the initial slope is exactly the rate constant, k .

We then propose to use the evolution of the transient saturation transferred to spin A as a function of time to get the kinetic parameters for chemical exchange processes, instead of using the steady state saturation. In this way, the build-up curve of the SSTD factor (η_{SSTD}) is mathematically fitted to equation 4, and the fit will yield the parameters η_{SSTD}^{MAX} and δ . As stated in equation 5, the product $\eta_{SSTD}^{MAX} \cdot \delta$ will directly yield the desired rate constant. Additionally, the longitudinal relaxation time constant T_{1A} could also be obtained from these experiments, as $\delta = R_{1A} + k$. Our method improves old transient saturation transfer experiments that involved calibration of a selective 180° pulse, and the measurement of both signals M_A and M_B .⁹

Here we demonstrate the applicability of the SSTD NMR method as a powerful and convenient approach to obtain kinetic parameters of intramolecular chemical exchange in small organic molecules and, of particular interest, its straightforward application to organometallic compounds.

One of the most studied chemical exchange process is the rotational barrier in the hindered rotation of *N,N*-dimethylamides, where the amide bond has partial double bond character developed in the resonance structure (Figure 1).¹⁰ Different NMR methods have been used to study the multi-site exchange kinetics (each methyl is replaced by an equivalent one) on these compounds in different

solvents, and much data regarding activation energy, enthalpy and entropy for rotation in many derivatives is available for comparison with our method.^{7, 11} We choose *N,N*-dimethylacetamide **1** as our model compound, and comparison of the data obtained for **1** with our method and other reported methods is given in Table 1 (see SI).

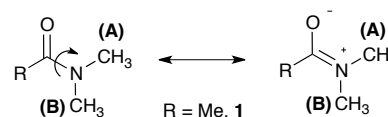


Figure 1. Resonance structure of *N,N*-dimethylamides showing the hindered rotation around the amide bond.

Table 1. Activation parameters for the internal rotation of *N,N*-dimethylacetamide **1** using different NMR methods for analysis.

Method/ Solvent	SSTD- NMR (This work)/ Tol- d_8	SST- NMR ^a / Tol- d_8	Line- shape analysis (¹ H NMR) ^{11a} / CCl ₄	Line- shape analysis (¹ H NMR) ^{11b} / (CD ₃) ₂ CO	Line- shape analysis (¹³ C NMR) ^{11c} /neat
E_a (KJ mol⁻¹)	79.7 ± 0.1	73.1 ± 1.4	70.5 ± 1.7	82.0 ± 1.3	79.5 ± 0.4
ΔH[‡] (KJ mol⁻¹)	77.2 ± 0.1	70.6 ± 1.4	68.0	79.5 ± 0.4	76.6 ± 0.4
ΔS[‡] (J mol⁻¹ K⁻¹)	11.5 ± 0.4	- 10.5 ± 5.0	- 15.0 ± 5.1	13 ± 8	3 ± 4
ΔG[‡]₂₉₈ (KJ mol⁻¹)	73.8 ± 0.1	73.7 ± 2.0	72.5	75.3 ± 0.4	75.7 ± 0.4

Our results are in excellent agreement with the reported data using spin-saturation transfer techniques and line-shape analysis.¹² It is worthy to note that ΔS^\ddagger is very difficult to measure by NMR methods hence the wide range of values reported.⁷

Given the good results obtained for the model compound **1**, we decided to test the method in more challenging substrates in organic and organometallic chemistry.

As a challenging compound we decided to analyse 4-*N,N*-dimethylamido[2.2]paracyclophane **2**,¹³ in which one of the signals of interest is overlapped with the signals from the methylene groups of the paracyclophane system (Figure 2. Note that at least one of the exchanging resonances should be isolated). As mentioned before, the existence of signal overlap usually makes the analysis of the rotational barriers by SST experiments more complicated, as the T_1 is difficult to measure. Using our method, at any saturation time in the difference spectrum, we only observe the exchanging signals and all the other overlapping signals cancel out, making it possible to obtain the k value directly and also the T_1 in the same experiment.

In **2**, the interconversion of the *N*-methyl groups takes place through rotation around the amide bond. Since the signal of one of the methyl groups (Me^A in Figure 2) overlaps with other signals in the spectra, the signal chosen for the selective saturation was that corresponding to the isolated methyl group (signal at 2.17 ppm, Me^B in Figure 2). The expansions in Figure 2 show the spectra without (a), and with (b) saturation of the Me^B signal, as well as the difference spectrum (c). As it can be observed in expansion (b), after saturation of Me^B its signal disappears, and, due to the saturation transfer process, the signal of Me^A decreases its intensity. NOE effects were absent (See SI for details).

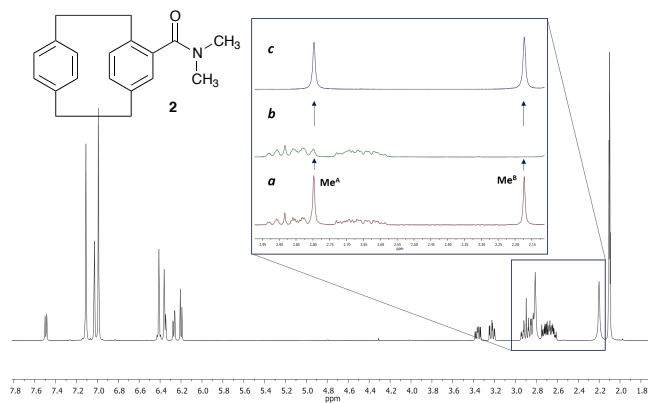


Figure 2. Structure and ^1H NMR spectra of 4-*N,N*-dimethylamido[2.2]paracyclophane **2** at 12 °C in toluene- d_8 . a) ^1H NMR expansion of the region from 2.15 to 2.95 ppm before irradiation. b) Same region after the irradiation of the methyl group at 2.17 ppm (Me^{B}). c) Difference spectrum [a] - b)].

The η_{SSTD} factor was calculated dividing the value of the integral of Me^{A} in the SSTD NMR spectrum (c) by the value of the integral of the Me^{B} in spectra (a). The values of η_{SSTD} were obtained for different saturation times at each temperature and their plot versus saturation time gave exponential curves in which a plateau was reached at long saturation times. The exponential fit allowed us to obtain the values of the rate constants of the process at the different temperatures (see SI for details). The values of the rate constants, although obtained at lower temperatures, are higher in this compound than those obtained for the *N,N*-dimethylamide **1** (See SI), suggesting in a first approach, that the rotation through the amide bond is faster in **2**. The data obtained was used to calculate the thermodynamic parameters using the Eyring equation ($\Delta\text{H}^\ddagger = 60.0 \pm 0.1 \text{ kJ mol}^{-1}$; $\Delta\text{S}^\ddagger = -22.0 \pm 0.4 \text{ J mol}^{-1} \text{ K}^{-1}$; $E_{\text{a}}(298 \text{ K}) = 62.5 \pm 0.1 \text{ kJ mol}^{-1}$; $\Delta\text{G}^\ddagger(298 \text{ K}) = 66.5 \pm 0.1 \text{ kJ mol}^{-1}$). The values of enthalpy, activation energy and Gibbs energy are lower in **2** than in **1** (compare with values in Table 1). This is in agreement with the weaker double-bond character of the amide functionality in **2**, due to further conjugation of the carbonyl group with the aromatic system, which makes the rotation of the amide bond easier.¹⁴

The interest of our group in organometallic chemistry and mechanistic investigations led us to demonstrate the applicability of this new methodology in metal-allene chemistry.¹⁵ We used as model compound a platinum-allene complex, already described in the literature and relevant to our current investigations, $\text{PtCl}_2(\text{dimethylallene})(\text{pyridine})$ **3** (Figure 3).¹⁶ In this complex, the platinum is coordinated with the terminal double bond of the allene (less substituted) in an η^2 fashion and the substituents in both terminal positions of the allene are perpendicular to each other. The two methyl substituents therefore are non equivalent, being one closer to the platinum and the other in the opposite face of the allene plane. As a result, in the ^1H NMR spectra, both methyl groups appear as different signals (Figure 3). The chemical exchange in this complex occurs due to the π -face exchange of the coordinated allene around the metal. According to this rotation, the metal could be at the “top” or at the “bottom” of the allene and both methyl groups interconvert between them.

The study of the rotational movement of platinum-allene complexes has been attempted using line-shape analysis for complex **3** and the analogous tetramethylallene-platinum

complex.¹⁶ Although values for the rate constants could be obtained for the tetramethylallene derivative,¹⁷ complex **3** showed a much slower rotation in CDCl_3 , and no kinetic data could be extracted.

We also observed slow rotation in complex **3**, which made the study impossible in the most common deuterated solvents (CDCl_3 , $\text{Tol-}d_8$, $\text{THF-}d_8$). The best solvent was 1,1,2,2-tetrachloroethane- d_2 , which allowed us to study the process at higher temperatures. However, in this solvent, the chemical shift of the signals of the two methyl groups did not change with temperature, with the coalescence temperature too high and in the range of the complex decomposition temperature. This is in agreement with the previous study,^{16a} and it is the reason why analysis of this compound with the line-shape analysis method is not possible. However, the spin saturation transfer process is still efficient enough in the range of temperatures where the complex is stable, which allowed us to apply our SSTD NMR methodology successfully in this challenging system.

The expansion in Figure 3 shows the spectra of **3** without (a) and with (b) saturation, as well as the difference spectrum (c). The saturation of Me^{B} led to the disappearance of its signal in the ^1H NMR, and to the decrease in the intensity of the signal of Me^{A} due to the saturation transfer process (b, Figure 3). NOE effects were absent (See SI for details).

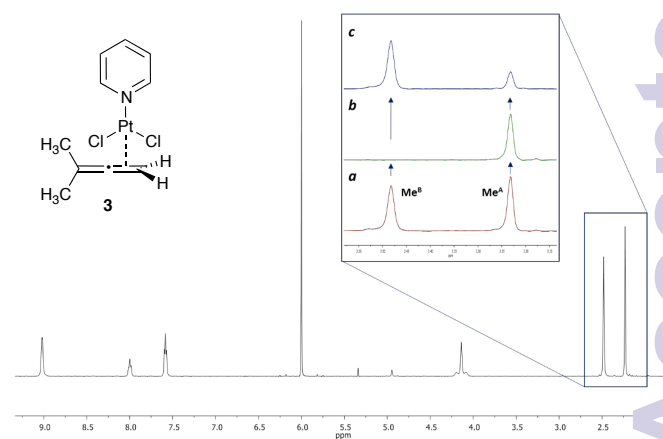


Figure 3. Structure and ^1H NMR of $\text{PtCl}_2(\text{dimethylallene})(\text{pyridine})$ **3** at 76 °C in 1,1,2,2-tetrachloroethane- d_2 . a) ^1H NMR expansion of the region from 2.15 to 2.55 ppm before irradiation. b) Same region after the irradiation of the methyl group at 2.48 ppm (Me^{B}). c) Difference spectrum [a] - b)].

Since the signal of the methyl group under observation, Me^{A} , is isolated from the other signals of the complex, the analysis can be performed by comparing the intensity of its signals in spectra (c) and (a). The values of η_{SSTD} were obtained and plotted versus the saturation times, and the exponential fit of these curves allowed us to obtain the values of the rate constants of the process at the different temperatures (Figure 4). The final values for the thermodynamic parameters were calculated using the Eyring equation ($\Delta\text{H}^\ddagger = 77.7 \pm 0.4 \text{ kJ mol}^{-1}$; $\Delta\text{S}^\ddagger = -36.0 \pm 1 \text{ J mol}^{-1} \text{ K}^{-1}$; $E_{\text{a}}(298 \text{ K}) = 80.2 \pm 0.4 \text{ kJ mol}^{-1}$; $\Delta\text{G}^\ddagger(298 \text{ K}) = 88.4 \pm 0.4 \text{ kJ mol}^{-1}$). These values are in agreement with a slow rotational movement of the allene on an axis passing through the centre of the coordinated double bond linked to the platinum, as suggested previously.^{16a, 17} Application of this method to an in-depth study of the dynamic behaviour of platinum-allene complexes, including the study of

intermolecular exchange processes, is being carried out in our group and will be reported in due course.

In summary, the Initial Growth Rates SSTD NMR method described here is very robust, and easy to use (it is based on the well-known STD NMR pulse sequence). It presents additional advantages over traditional approaches, and we envision that it will be of wide interest amongst the organic and organometallic community, and that it will be applied in the study of many chemical exchange processes in challenging compounds.¹⁹

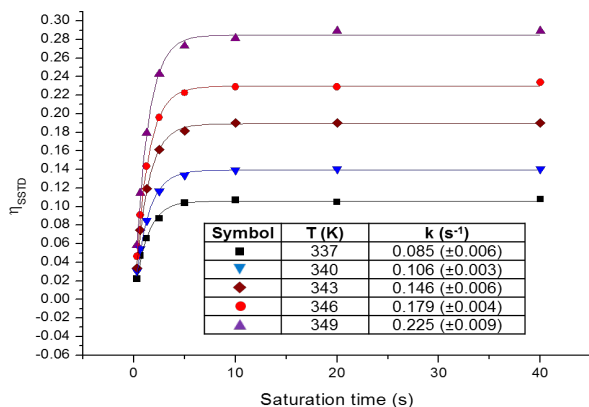


Figure 4. Plots of the η_{SSTD} vs. saturation time at different temperatures for $\text{PtCl}_2(\text{dimethylallene})(\text{pyridine})$ **3**, and table with the obtained rate constants.

Authors thank Dr C. J. Richards and R. Arthurs (UEA) for a pure sample of amide **2**, and Dr C. Macdonald for his help with the NMR experiments. Funding by the University of East Anglia and the EPSRC (EP/L012855/1) is gratefully acknowledged (MTQ). This work was supported by the A-I Chem Channel program, selected by the European INTERREG IV A France (Channel) – England Cross-border cooperation Programme, co-financed by ERDF.

Notes and references

^a Dr M. P. Muñoz,* Dr M. T. Quirós

School of Chemistry

University of East Anglia, Earlham Road, NR4 7TJ, Norwich, UK

E-mail: m.munoz-herranz@uea.ac.uk

^b Dr J. Angulo*

School of Pharmacy

University of East Anglia, Earlham Road, NR4 7TJ, Norwich, UK

E-mail: j.angulo@uea.ac.uk

† Electronic Supplementary Information (ESI) available. See DOI: 10.1039/c000000x/

- (a) A. D. Bain, *Prog. Nuc. Mag. Res. Spect.*, 2003, **43**, 63-103. (b) A. D. Bain, *Modern Magnetic Resonance*, 2006, 421-427. (c) A. D. Bain, *Ann. Rep. NMR Spect.*, 2008, **63**, 23-48, and references therein.
- (a) L. Reeves, R. Shaddick and K. Shaw, *Can. J. Chem.*, 1971, **49**, 3683-3691. (b) T. Drakenberg, K. Dahlqvist and S. Forsen, *J. Phys. Chem.*, 1972, **76**, 2178-2183. (c) F. Fujiwara and C. Airolidi, *J. Phys. Chem.*, 1984, **88**, 1640-1642. (d) H. S. Gutowsky and C. H. Holm, *J. Chem. Phys.*, 1956, **25**, 1228-1234.
- (a) S. Forsen and R. A. Hoffman, *Acta Chem. Scand.*, 1963, **6**, 1787-1788. (b) S. Forsen and R. A. Hoffman, *J. Chem. Phys.*, 1963, **39**, 2892-2901.
- J. Sandstrom, *Dynamic NMR Spectroscopy*, Academic: New York, 1982.

- L. Castanar, P. Nolis, A. Virgili and T. Parella, *J. Magn. Reson.*, 2014, **244**, 30-35.
- (a) M. Mayer and B. Meyer, *Angew. Chem. Int. Ed.*, 1999, **38**, 1784-1788. (b) M. Mayer and B. Meyer, *J. Am. Chem. Soc.*, 2001, **123**, 6108-6117. (c) J. Angulo, P. M. Enriquez-Navas and P. M. Nieto, *Chem. Eur. J.*, 2010, **16**, 7803-7812.
- (a) R. L. Jarek, R. J. Flesher and S. K. Shin, *J. Chem. Ed.*, 1997, **74**, 978-982. (b) H. M. McConnell, *J. Chem. Phys.*, 1958, **28**, 430. (c) I. Ugurbil, *J. Magn. Reson.*, 1985, **64**, 207-219. (d) S. F. Bellon, D. Chen and E. R. Johnston, *J. Magn. Reson.*, 1987, **73**, 168-173.
- S. Kemper, M. K. Patel, J. C. Errey, B. G. Davis, J. A. Jones and D. W. Claridge, *J. Magn. Reson.*, 2010, **203**, 1-10.
- F. W. Dahlquist, K. J. Longmuir and R. B. Du Vernet, *J. Magn. Reson.*, 1975, **17**, 406-410.
- W. E. Stewart and T. H. Siddall, III, *Chem. Rev.*, 1970, **70**, 517-551.
- (a) L. W. Reeves, R. C. Shaddick and K. N. Shaw, *Can. J. Chem.*, 1971, **49**, 3684-3691. (b) T. Drakenberg, K.-I. Dahlqvist and S. Forsen, *J. Phys. Chem.*, 1972, **76**, 2178-2183. (c) F. Y. Fujiwara and C. Airolidi, *J. Phys. Chem.*, 1984, **88**, 1640-1642. (d) T. Drakenberg, K.-I. Dahlqvist and S. Forsen, *Acta Chem. Scand.*, 1970, **24**, 694-702. (e) M. T. Rogers and J. C. Woodbrey, *J. Phys. Chem.*, 1961, **66**, 540-546. (f) R. C. Neuman, Jr. and V. Jonas, *J. Am. Chem. Soc.*, 1968, **90**, 1970-1975. (g) R. C. Neuman, Jr., W. R. Woolfenden and V. Jonas, *J. Phys. Chem.*, 1969, **73**, 3177-3180. (h) K. F. Morris and L. E. Erikson, *J. Chem. Ed.*, 1996, **73**, 471-473. (i) M. Rabinovitz and A. Pines, *J. Chem. Soc.*, B 1968, 1110-1111. (j) M. Rabinovitz and A. Pines, *J. Am. Chem. Soc.*, 1969, **91**, 1585-1589.
- The T_1 values obtained with this method (see SI for details) are in agreement with those obtained with the inversion-recovery experiment. The small differences in the values are due to the different magnetic fields of the spectrometers used (see ref 7a).
- N. Dendele, F. Bisaro, A.-C. Gaumont, S. Perrio and C. J. Richards, *Chem. Commun.*, 2012, **48**, 1991-1993.
- For amide dissociation enthalpies calculated by DFT, see: I. J. Marochkin and O. V. Dorofeeva, *Comp. Theor. Chem.*, 2012, **99**, 182-191.
- (a) M. P. Muñoz, M. C. de la Torre and M. A. Sierra, *Adv. Synth. Catal.*, 2010, **352**, 2189-2194. (b) M. P. Muñoz, M. C. de la Torre and M. A. Sierra, *Chem. Eur. J.*, 2012, **18**, 4499-4504. (c) C. Hurtado-Rodrigo, S. Hoehne and M. P. Muñoz, *Chem. Commun.*, 2011, **50**, 1494-1496.
- (a) K. Vrieze, H. C. Volger, M. Gronert and A. P. Praat, *J. Organometal. Chem.*, 1969, **16**, P19-P22, (b) K. Vrieze, H.C. Volger and A. P. Praat, *J. Organometal. Chem.*, 1970, **21**, 467-475.
- A value of $k = 30 \text{ s}^{-1}$ was observed for the tetramethylallene analogue in CDCl_3 at -46°C .
- Line-shape analysis has been applied in the study of the dynamic behaviour of gold-allene complexes in solution: T. J. Brown, A. Sugie, M. G. D. Leed and R. A. Widenhoefer, *Chem. Eur. J.*, 2002, **18**, 6959-6971. For a general review, see: W. Yang and S. K. Hashmi, *Chem. Soc. Rev.*, 2014, **43**, 2941-2955.
- This method can be extended to multi-site exchange and unequal populations, as long as the equations are properly modified, see: S. Forsen and R. A. Hoffman, *J. Chem. Phys.*, 1964, **40**, 1189-1196.