

Analytical Methods

Accepted Manuscript



This is an *Accepted Manuscript*, which has been through the Royal Society of Chemistry peer review process and has been accepted for publication.

Accepted Manuscripts are published online shortly after acceptance, before technical editing, formatting and proof reading. Using this free service, authors can make their results available to the community, in citable form, before we publish the edited article. We will replace this *Accepted Manuscript* with the edited and formatted *Advance Article* as soon as it is available.

You can find more information about *Accepted Manuscripts* in the [Information for Authors](#).

Please note that technical editing may introduce minor changes to the text and/or graphics, which may alter content. The journal's standard [Terms & Conditions](#) and the [Ethical guidelines](#) still apply. In no event shall the Royal Society of Chemistry be held responsible for any errors or omissions in this *Accepted Manuscript* or any consequences arising from the use of any information it contains.



Analytical Methods

ARTICLE

Comparison of GC-MS, HPLC-MS and SIFT-MS in Conjunction with Multivariate Classification for the Diagnosis of Crohn's Disease in Urine

Received 00th January 20xx,
Accepted 00th January 20xx

DOI: 10.1039/x0xx00000x

www.rsc.org/

M. Cauchi^{a*}, D. P. Fowler^b, C. Walton^b, C. Turner^c, R. H. Waring^d, D. B. Ramsden^d, J. O. Hunter^e, P. Teale^f, J. A. Cole^d and C. Bessant^g

The developed world has seen an alarming increase in the incidence of gastrointestinal diseases, among the most common of which is Crohn's disease (CD) in the young. The current "gold standard" techniques for diagnosis are often costly, time consuming, inefficient, invasive, and offer poor sensitivities and specificities. This paper compares the performances of three hyphenated instrumental techniques that have been suggested as rapid methods for the non-invasive diagnosis of CD from urine. These techniques are gas chromatography-mass spectrometry (GC-MS), high performance liquid chromatography-mass spectrometry (HPLC-MS) and selected ion flow tube mass spectrometry (SIFT-MS). Each of these techniques is followed by multivariate classification to provide a diagnosis based on the acquired data. The most promising results for potentially diagnosing CD was via HPLC-MS. An overall classification accuracy of 73% (74% specificity; 73% sensitivity) was achieved for differentiating CD from healthy controls, statistically significant at 95% confidence.

Introduction

The incidences of patients in the developed world being diagnosed with gastrointestinal diseases have been increasing in recent years. This may be attributable to a combination of life-style traits, particularly unhealthy diet involving foods high in saturated fat, starch and sugar, and lack of fruit and vegetables normally rich in anti-oxidants¹. This has led to an increased interest in research into the causes, prevention and possible cure of these diseases². Further to this are cases of food intolerance which could be due to abnormal fermentation processes occurring within the gut³ or a drastic change in diet leading to increased incidences of Crohn's disease⁴.

Crohn's disease (CD) is a debilitating inflammatory bowel disease (IBD) causing inflammation of the mucosal lining in the gut⁵⁻⁷. It is known that CD can affect any part of the gastrointestinal tract, whereas ulcerative colitis (UC) – another IBD – typically only

affects the large colon. The presenting symptoms of CD and UC (chiefly abdominal pain and diarrhoea) are similar making differential diagnosis of these two conditions challenging. This is very important because the treatment required is different⁸. There have been occasions in which a patient deemed to be suffering from UC is later diagnosed with CD. This is in conjunction with the discovery of new therapeutic agents employed to treat IBD^{9,10}.

Colonoscopy and sigmoidoscopy are the current "gold standard" methods of diagnosing CD (and UC)^{11,12}. Sigmoidoscopy permits a direct 5-20 minute examination of the lining of the rectum and the lower part of the colon by using a fibre-optic scope attached to a camera enabling the examiner to observe the lining for any irregularities. Colonoscopy makes use of a probe of greater length which is able to extend up to the ileum¹³. The duration of the procedure can be 30 minutes in which it is necessary for the patient to be sedated. This tends to be a more accurate diagnostic technique than sigmoidoscopy^{8,11}. The two techniques are however highly invasive and expensive to perform.

An alternative approach is the determination of chemical biomarkers such as faecal calprotectin¹⁴⁻¹⁷. However, the diagnostic performance of these tests is limited, which has led to the investigation of analytical approaches to the non-invasive diagnosis and monitoring of these conditions¹⁸. More recently, analytical techniques incorporating mass spectrometric methods have been used to capture metabolic profiles of clinical samples. These can either analyse metabolites in solution¹⁹ or those in the vapour phase, so called volatile organic compounds (VOCs). These have advantages in that analysis can be non-invasive if urine, faeces, breath and some other fluids are analysed, reducing the need for invasive procedures which are uncomfortable and costly.

^a School of Aerospace, Transport and Manufacturing (SATM), Cranfield University, Bedfordshire MK43 0AL, UK.

^b School of Energy, Environment and Agrifood (SEEA), Cranfield University, Bedfordshire MK43 0AL, UK.

^c The Department of Life, Health and Chemical Sciences, Open University, Milton Keynes, MK7 6AA, UK.

^d School of Biosciences, University of Birmingham, Birmingham B15 2TT, UK.

^e Gastroenterology Research Unit, Box 262, Addenbrooke's Hospital, Cambridge CB2 0QQ, UK.

^f LGC Ltd, Newmarket Rd, Fordham, Cambridgeshire CB7 5WW, UK.

^g School of Biological and Chemical Sciences, Queen Mary University of London, Mile End Road, London E1 4NS, UK.

† Footnotes relating to the title and/or authors should appear here.

Electronic Supplementary Information (ESI) available: [details of any supplementary information available should be included here]. See DOI: 10.1039/x0xx00000x

High performance liquid chromatography coupled with mass spectrometry (HPLC-MS) is routinely employed in proteomics²⁰, and gas chromatography mass spectrometry (GC-MS) techniques have been employed for many years for the detection of metabolites²¹ including the possible diagnosis of gastrointestinal diseases^{22, 23}. HPLC-MS is also being employed in the study of metabolomics data such as the determination of the changes in the human urinary metabolome after the consumption of certain nuts, e.g. almonds^{24, 25}, and the study of the age and strain-related differences in the Zucker rat^{26, 27}. It has also been used in conjunction with proton nuclear magnetic resonance (¹H NMR) for the analysis of biofluid samples²⁸⁻³⁰.

The relatively new technique of selected ion flow tube mass spectrometry (SIFT-MS) is also being employed in metabolomics³¹⁻³⁶. Rapid and quantitative analysis of VOCs can be achieved using SIFT-MS. This employs a fast flow tube to study the reaction of precursor ions with sample molecules in gas or vapour form. The flow tube technology, along with the quantitative mass spectrometry, allows selected precursor ions (H₃O⁺, NO⁺, and O₂⁺) to react in turn with the sample molecules to produce product ions through chemical ionisation (CI). These product ions are separated in a downstream quadrupole and are then detected and quantified. A kinetic database is used to quantify the concentrations of various molecules present in the sample. The particular precursor ions are chosen because they have slow reaction rates with the components of air, but react quickly with trace gases and vapours that may be used in research. This technology, unlike most CI techniques, is able to use all three reagents rapidly in turn on the same instrument³². SIFT-MS is being widely employed for the real time analysis of volatile compounds originating from biological systems in medical applications³³ and clinical diagnosis³⁴. A key advantage of SIFT-MS is the ability to distinguish between different isomers via the use of the three precursor ions mentioned previously³⁷.

These analytical techniques all have the capability of producing large amounts of data about metabolites present, and therefore sophisticated techniques are needed in analysis. Multivariate classification is a pattern recognition technique which determines which samples belong to a designated class²¹. One approach is partial least squares discriminant analysis (PLS-DA)^{38, 39} and is termed a supervised method leading to the separation of samples into different classes, for example healthy and diseased. Although there exist more advanced techniques such as support vector machines⁴⁰ and artificial neural networks⁴¹, PLS-DA permits the direct identification of statistically significant features that may be related to potential biomarkers by visual inspection of the PLS loadings^{39, 42}. A recent study reported the use of GC-MS in conjunction with PLS-DA for the diagnosis of gastrointestinal diseases including Crohn's disease in a series of matrices (faeces, breath, blood and urine)⁴³. This study found that only CD could be diagnosed in the presence of the other diseases and healthy controls. This was achieved using faecal material. Very good accuracy was also attained for CD by analysing urine, but the sensitivity was below 50% and thus of no diagnostic benefit.

In looking at diagnostic or screening tests, the ease of sample acquisition and use is an important consideration. Faecal samples are generally harder to collect and process, not least of which is due to the subjects' reluctance to provide samples. Blood is also

occasionally problematic due to the invasive nature of the sampling, and the discomfort caused to patients by venepuncture. For this reason, and the ease of collection and storage, urine is considered to be a better matrix to use, which is the reason why it was investigated in this study.

The present article describes the application of multivariate classification to GC-MS, HPLC-MS and SIFT-MS data acquired from the same urine samples which were employed in our previous paper⁴³. This was carried out in order to determine whether the greater sensitivity and overall accuracy was achieved compared with the results obtained using GC-MS data, the overall objective being to distinguish patients suffering from CD from those with IBS and UC and from healthy individuals.

Experimental

Reagents

Unless otherwise stated, analytical grade reagents and solvents were employed.

Sampling

Selection of candidates

Volunteers were recruited from patients attending the Gastroenterology Department at Addenbrooke's Hospital (Cambridge, UK). There were an initial total of 57 candidates of which 18 were diagnosed with Crohn's disease (CD), 8 with ulcerative colitis (UC), 18 with irritable bowel syndrome (IBS) and 13 who were deemed healthy. Each candidate gave oral and written consent. They were issued with a urine sample container bearing their individual code. This was to ensure patient confidentiality in accordance with the Data Protection Act (1998).

The study had been ethically approved by the National Research Ethics Service in Leeds in July 2007 (07/Q1205/39).

Instrumental measurements

GC-MS

The samples were aspirated into thermal desorption tubes and 50ng of deuterated (D8)-toluene were added subsequently as an internal standard (IS). These tubes were loaded on to an automated thermal desorption gas chromatography mass spectrometer (ATD-GC-MS) and analysed. A more detailed account of the instrumental parameters and conditions are provided elsewhere⁴³.

HPLC-MS

Samples were prepared using a simple dilution approach (1 in 10 in water containing deuterated (D6)-caffeine (100ng/ml) as IS. This was executed by placing 900µl of water/IS in a standard LC-MS injection vial using a repeating pipette and adding 100µl of sample (aspirated from the top of the sample tube without mixing to avoid picking up solids). The LC vials were then capped and vortex-mixed. All sample preparation and analysis was carried out in a single process. Samples were analysed using a 7 minute LC-MS run in positive ion mode on an Orbitrap Discovery system running at 30,000 resolution. The injection volume was 10µl. A more detailed

Journal Name

account of the instrumental parameters and conditions are listed in Table SM1 of the Supplementary Material.

SIFT-MS

Urine (2.5 ml) was placed in a sample bag made from 65mm diameter Nalophan NA tubing (Kalle UK). The bags were sealed and then filled with hydrocarbon-free air and equilibrated in an incubator at 40°C to generate a vapour headspace. One end of each sample bag was connected via a Swagelok fitting directly to the SIFT-MS capillary inlet for analysis of the urine headspace, and VOCs in the sample were analysed in each sample after equilibration. The SIFT-MS was a Profile 3 model manufactured by Instrument Science (UK).

The sample VOCs react with one of three precursor ions (H_3O^+ , NO^+ or O_2^+) to generate product ions, which are then separated via a quadrupole and counted (in counts per second) at the detector. Thus the data obtained are in the form of counts per second determined over a 30 second period at each mass to charge ratio (m/z), from m/z 10 to m/z 140. The data thus obtained represent the amount of product ion formed using each of the three precursor ions. Using this instrument, whole volatile profiles of samples may be generated very rapidly, offering real time instantaneous results as opposed to GC-MS and HPLC-MS which can only offer “snapshots” of instances in a particular time and space.

Data pre-processing**GC-MS**

The raw GC-MS files produced by the ATD-GC-MS instrument were imported into MATLAB (R2011a, MathWorks Inc., USA) in the NetCDF (.CDF) format. During the importation of each file, which corresponded to one sample, the intensity values pertaining to the retention times and mass-to-charge (m/z) ratios were normalised against the deuterated (D8)-toluene, and then summed across the m/z values to produce a data matrix whose order was the number of samples and the number of retention time values. This effectively forms a matrix of total ion count (TIC) chromatograms. Exploratory data analysis techniques were employed to identify any specific trends and sample outliers. These were principal components analysis (PCA)⁴⁴ in conjunction with Hotelling's T^2 statistic⁴⁵ and hierarchical cluster analysis (HCA)⁴⁶. This is necessary because the presence of outlying samples will affect the performance of the chromatographic peak alignment detailed below. No samples were identified to be outlying.

Correlation optimised warping (COW)⁴⁷ was employed to align the chromatograms. This has the advantage of requiring minimum user input especially as the two main parameters (segment and slack) are determined automatically. A *segment* contains a fixed number of retention time ranges which contain peaks to be shifted. The extremity of the shifting is determined by the *slack*. A reference chromatogram must first be determined via a number of options such as the mean, median, maximum or the correlation coefficients. It is also possible to employ a PCA loading (typically PC1) as a reference chromatogram⁴⁸. The latter was employed here. After the segment and slack parameters were automatically determined, they were employed to align the respective chromatograms within the data matrix.

HPLC-MS

The raw HPLC-MS data files were converted to ASCII text format (.MLT) by the HPLC-MS software (MassTransit by Palisade). The contents of the text file were a column containing the total ion counts (TICs), a column containing the retention times, and a data matrix containing the single ion counts (SICs) ranging from m/z 80 to m/z 850. The text file was imported into MATLAB in its entirety. The single ion count (SIC) chromatogram for deuterated caffeine was extracted at the mass-charge (m/z) value of 201 in conjunction with the naturally occurring internal standard of creatinine⁴⁹ at the m/z value of 114, and all intensity values in each sample matrix were normalised against them. The normalised SICs in each sample were summed to form a total ion count (TIC) chromatogram for each sample. All samples were combined into a data matrix in which the dimensions were the number of samples by the number of retention time values.

Principal components analysis (PCA) and correlation optimised warping (COW) was employed as for GC-MS.

SIFT-MS

The raw SIFT-MS data files (three for each sample resulting from the three precursor ions employed) were processed by “SIFT-MS Software” (v4.300.231.1396, © Patrik Spänell, 1996-2006), combined and exported to an Excel file, which was imported into MATLAB. Data pre-processing involved normalisation of the m/z values against the relevant precursor ions (e.g. normalised against m/z 19, the H_3O^+ precursor), followed by removal of the precursor and associated ions prior to subsequent analysis; these were: 19, 21, 30, 32, 34, 37, 39, 48, 55, 57, 66, 73, 75 and 91. Lastly, any m/z values where zero abundance was recorded in all samples were removed. PCA was performed as described for GC-MS leading to the identification of one outlying sample – a UC sample, which was removed due to having relatively very high abundances compared to all other samples.

Data analysis**Multivariate classification**

Multivariate classification was carried out in MATLAB also using functions from the PLS Toolbox (v3.5, Eigenvector Research Inc., USA). Partial least squares discriminant analysis (PLS-DA)³⁸ was employed to construct models relating the acquired data for each sample to the sample class. It employs the SIMPLS algorithm⁵⁰ to reduce the response profiles (chromatograms for GC-MS and HPLC-MS, or mass spectra for SIFT-MS) into latent variables which capture the maximum amount of covariance. This is achieved using a two-step nested process which simultaneously optimises and evaluates the respective models via a heuristic bootstrapping approach in which leave-one-out cross-validation (LOO-CV) is employed for model optimisation. Bootstrapping is used to get meaningful performance metrics. This is described below.

Validation and performance metrics

Validation is usually performed to ensure that the classification models generated are robust in terms of their ability to generalise to newly acquired data⁵¹. Our approach has three nested stages which are an evaluation stage, an inner optimisation stage and an outer optimisation stage. The evaluation stage tests the performance of the optimal model suggested by the two optimisation stages. In this work 150 evaluations were performed. The average overall accuracy, specificity, and sensitivity over all evaluations are calculated. The area under the receiver operating characteristic (AUROC) curve is also determined from the sensitivity and specificity values via the *trapezoid rule*⁵². ROC curves are employed in the medical field to determine whether a diagnostic test is sufficient in deducing whether an individual is healthy or has a particular disease/condition⁵³.

The overall success of classification is determined in conjunction with the specificity and sensitivity. Specificity determines how well the healthy (control) samples were classified whilst sensitivity determines how well the target case (diseased) samples were classified.

Permutation testing

A permutation test was performed in order to determine whether the performance of the classification models were statistically significant or due to chance^{51, 54}. This was achieved by the random assignment of the target cases (e.g. healthy controls and CD) to each sample while maintaining the number of healthy and diseased samples actually observed, followed by classification using the heuristic bootstrapping approach described previously. This was repeated 300 times which ensured that a smooth distribution was attained. The distribution of the permutations ($n_1=300$) was compared visually against the distribution of the evaluations ($n_2=150$), and the statistical two-sampled two-tailed z-test was calculated ($\alpha=0.05$) at the 95% confidence limit in order to determine the statistical significance⁵⁵.

Results and discussion

Table 1 summarises the results attained for the classification of Crohn's disease against the healthy control in the urine sample matrix for GC-MS, HPLC-MS and SIFT-MS.

Table 1. Comparison of the optimum PLS-DA classification results for CD versus healthy controls in urine. The significance of the result for each combination of sample matrix and disease is determined from the permutation testing results using a z-test.

Instrument	% CC (%) ^a	SPEC (%) ^a	SENS (%) ^a	AUROC ^b	p value from z-test ($\alpha=0.05$)
GC-MS	52.3	62.8	34.7	0.45	0.502
HPLC-MS	73.3	73.7	73.1	0.79	< 0.001
SIFT-MS	48.2	55.7	42.6	0.43	0.093

Figure 1 displays the permutation test⁵¹ results comparing both the distribution of the permutations and the evaluations.

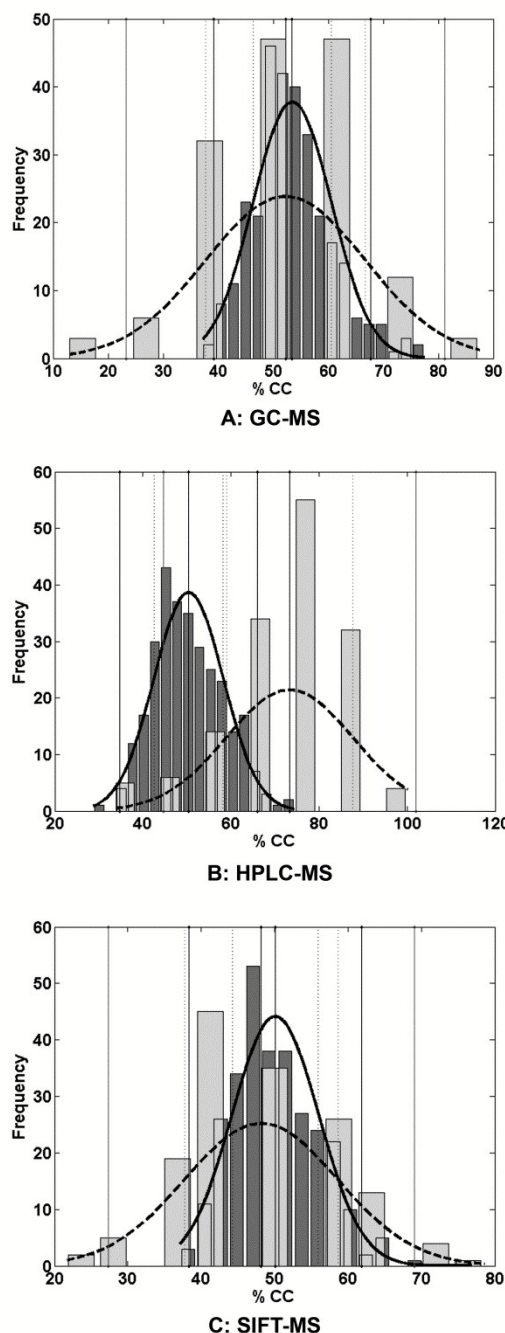


Figure 1. Distributions of the overall percentage classified for the 150 evaluations (light grey) and after randomised assignment of classes for the 300 permutations (dark grey) for CD versus control in urine. %CC denotes the percent correctly classified.

Table 1 and Figure 1 show that, using urine as the analyte matrix, HPLC-MS in conjunction with multivariate classification is the best of the three methods for differentiating CD patients from healthy controls.

Table 2. Comparison of the optimum PLS-DA classification results for Crohn's disease versus healthy controls and other disease cases in urine. The significance of the result for each combination of sample matrix and disease is determined from the permutation testing results using a z-test

Instrument	% CC (%) ^a	SPEC (%) ^a	SENS (%) ^a	AUROC ^b	p value from z-test ($\alpha=0.05$)
GC-MS	70.8	72.8	65.9	0.78	< 0.001
HPLC-MS	68.2	75.7	54.6	0.61	< 0.001
SIFT-MS	62.6	77.9	30.2	0.52	< 0.001

Key as for Table 1

This is supported by the comparison of the means of the two distributions in which the calculated z-values were statistically significant for HPLC-MS but insignificant for both GC-MS and SIFT-MS.

In clinical practice, the presenting symptoms are similar for a range of conditions. The data analysis was therefore repeated in order to differentiate CD in the presence of other diseases (IBS and UC) in addition to healthy controls. The results are summarized in Table 2. Figure 2 shows the permutation test results for CD versus the healthy controls and other disease states comparing both the distribution of the permutations and the evaluations.

These results show that the discrimination of CD against healthy controls and other target cases is more challenging than separating CD from healthy controls only. This is evident in the sensitivities reported in Table 2 for HPLC-MS and SIFT-MS. By comparison, increased sensitivity was observed in the GC-MS data with overall classification accuracy (%CC) over 70% being attained. The specificities shown in Table 2 exceed 70%. This may be attributed to the imbalance of the respective datasets, resulting from combining the data from the other diseases (IBS and UC) with those of the healthy controls to form one "healthy" dataset. As a consequence the PLS-DA model is better trained to recognize the "healthy" class. However the sensitivity for GC-MS reported earlier in Table 1 was very low (~35%), suggesting failure to distinguish the target case (CD) from the healthy controls. To investigate this phenomenon, the misclassification of IBS, UC and healthy controls as CD was investigated (Table 3).

Table 3 suggests that for GC-MS, 30% of control samples were misclassified as CD samples, whilst 26% and 25% of IBS and UC samples respectively were misclassified as CD. This explains why the sensitivity of ~35% was attained for CD versus control only (Table 1), which was due to the difficulty in GC-MS distinguishing between controls and CD.

Table 3. Illustration of the ability of the models developed for CD v healthy controls and other disease cases for each instrumental technique to classify the samples. Numerical values in columns represent the percentage of samples (pertaining to each case) classified as CD.

Case	Instrument		
	GC-MS	HPLC-MS	SIFT-MS
CD	66	55	30
IBS	26	25	22
UC	25	26	20
CTRL	30	23	25

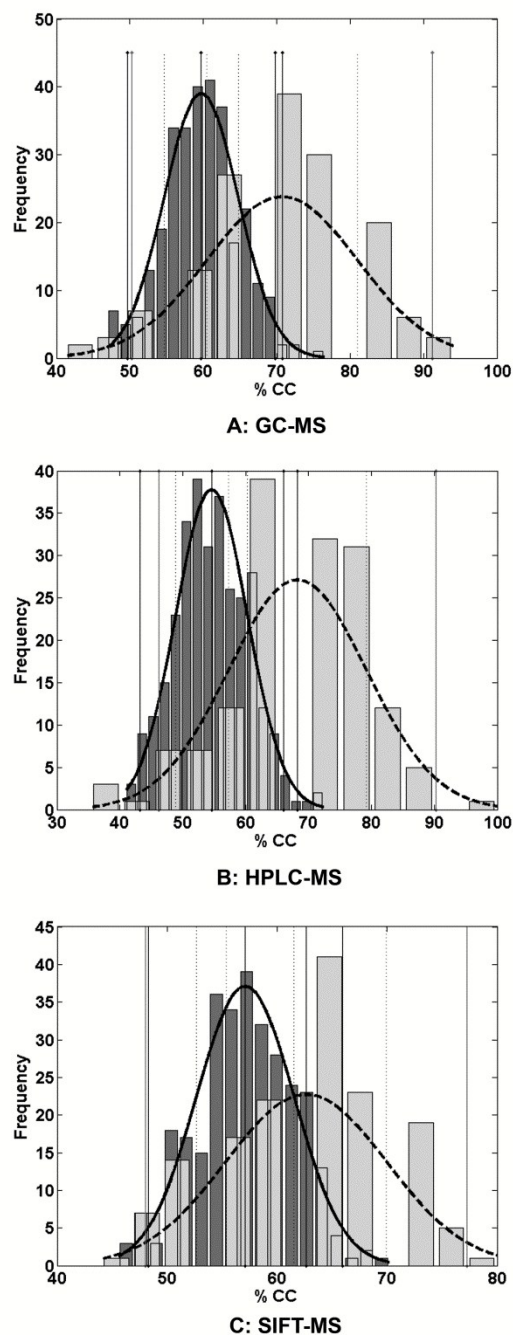


Figure 2. Distribution of the overall percentage classified for the 150 evaluations (light grey) and after randomised assignment of classes for the 300 permutations (dark grey) for CD versus control and other disease cases in urine. %CC denotes the percent correctly classified.

This is also apparent for SIFT-MS, because 25% of control samples were misclassified as CD, and only 30% of CD samples were correctly classified. In contrast, fewer control samples were misclassified as CD via HPLC-MS. Furthermore, 26% of UC samples were misclassified as CD, confirming the difficulty in distinguishing between CD and UC^{9,10}.

Further interrogation of the loadings extracted from the PLS-DA model pertaining to the CD versus control dataset for HPLC-MS, resulted in a number of compounds being identified via the

MassBank website (<http://www.massbank.jp>). These were Moracin-C, 3-(3-hydroxyphenyl) propionic acid, Chalcomoracin, dimethyl azelate, nonanedioic acid dimethyl ester and 9-hydroxyimino-6-methyl-4-oxo-6,7,8,9-tetrahydro-4H-pyrido(1,2-A) pyrimidine-3-carboxylic acid ethyl ester ("HMOTPPCAEE"). However, Moracin-C and Chalcomoracin were found to be antibacterial compounds and could be as a result of drugs taken by CD and IBS sufferers⁵⁶. Moracin-C was also found in IBS versus control. Of great interest, 3-(3-hydroxyphenyl) propionic acid, dimethyl azelate, nonanedioic acid dimethyl ester and "HMOTPPCAEE" could be potential biomarkers for CD (in urine via HPLC-MS) since no occurrences were identified in the control, IBS and UC samples.

Propionic acid had also been observed to be statistically significant in the faecal samples of patients presenting with CD⁵⁷ which suggests that this could be a key metabolite since observed in both urine and faecal samples. There had also been increases in the concentrations of alcohol and ester derivatives of indole and some short-chain fatty acids such as 3-methyl butanoic acid in CD compared to UC and IBS⁵⁷.

Furthermore, a key problem is in differentiating between Crohn's disease and ulcerative colitis. They present similarly but have different treatments. These metabolic profiling techniques should be used in conjunction with clinical symptoms. Other common conditions of the gastro-intestinal tract such as IBS may also be differentiated^{43, 57} but generally have less severe symptoms. Moreover, many gastrointestinal diseases have similar symptoms such as pain, diarrhoea and weight loss, but very different pathology which may be reflected in separate biomarkers which are thus of potential diagnostic value. Lastly, a study in 2013 further illustrated that 25% of cases of CD do not get a diagnosis until two years have elapsed⁵⁸ therefore highlighting the need for a more rapid diagnosis.

Conclusions

The comparison of the three instrumental techniques for the diagnosis of Crohn's disease (CD) using urine as the analyte matrix indicated that HPLC-MS was the best for distinguishing CD sufferers from healthy controls. Nevertheless when IBS and UC patients were included into the subject matrix together with healthy controls, GC-MS appeared to be the best method. However, the misclassification of the IBS, UC and healthy controls was taken into consideration (Table 3), it is possible that HPLC-MS is superior. SIFT-MS and GC-MS analyses were not sufficiently accurate, with unacceptably low sensitivities. These methods analyse VOCs, whereas HPLC-MS analyses metabolites in solution. The results obtained using HPLC-MS imply that the metabolites in solution are better indicators of CD than the volatile compounds present in urine headspace. Previous work has shown that VOCs in the headspace of faecal samples may be used in differentiating CD from UC and other IBDs^{43, 57}, but use of urine headspace is less efficient as a means of classification.

The typical accuracy of the "gold-standard method" of colonoscopy at the time of writing was 79%. Though the overall classification accuracies reported in this work did not exceed this value (e.g. 73% via HPLC-MS for CD v healthy

control) it does suggest that urine could become a suitable matrix for the non-invasive diagnosis of CD. The gold standard for all gastrointestinal diseases remains endoscopy and the histological examination of tissue biopsies. Detection of specific biomarkers may help focus accurately the investigations required saving both time and expense.

This manuscript covered the potential for using this combination of analytical instrumentation with multivariate statistics for disease diagnosis. Further work would concentrate on validating this technology, and then the diagnostic potential would be in rolling this approach out in clinics, where it is often difficult to diagnose Crohn's disease except via endoscopy or sigmoidoscopy.

Acknowledgements

We gratefully acknowledge the Wellcome Trust for funding the work (project 080238/Z/06/Z).

We also gratefully acknowledge the following persons for their valuable contribution to the work: Bruce Bolt, Philip Spratt, Wenjing Jia, Hao Bai, Claire Dawson, Lesley Griffiths and Rebekah Whitehead.

References

1. S. Bengmark, *Clinical Nutrition*, 2004, **23**, 1256-1266.
2. J. G. Williams, S. E. Roberts, M. F. Ali, W. Y. Cheung, D. R. Cohen, G. Demery, A. Edwards, M. Greer, M. D. Hellier, H. A. Hutchings, B. Ip, M. F. Longo, I. T. Russell, H. A. Snooks and J. C. Williams, *Gut*, 2007, **56**, 1-113.
3. J. O. Hunter, *The Lancet*, 1991, **338**, 495-496.
4. R. Shoda, K. Matsueda, S. Yamato and N. Umeda, *The American Journal of Clinical Nutrition*, 1996, **63**, 741-745.
5. R. M. Nakamura, M. Matsutani and M. Barry, *Clinica Chimica Acta*, 2003, **335**, 9-20.
6. P. von Stein, N. Kouznetsov, A. Gielen, A. Å-st, O. von Stein and R. Lofberg, *Journal of Crohn's and Colitis Supplements*, 2007, **1**, 12.
7. P. von Stein, R. Lofberg, N. V. Kuznetsov, A. W. Gielen, J.-O. Persson, R. Sundberg, K. Hellstrom, A. Eriksson, R. Befrits, A. Ost and O. D. von Stein, *Gastroenterology*, 2008, **134**, 1869-1881.
8. D. E. Deutsch and A. D. Olson, *Journal of Pediatric Gastroenterology and Nutrition*, 1997, **25**, 26-31.
9. B. Moum, A. Ekbo, V. M. H., E. Aadland, J. Sauar, I. Lygren, T. Schulz, N. Stray and O. Fausa, *Gut*, 1997, **40**, 328-332.
10. E. Seidman and C. Deslandres, *Pitfalls in the diagnosis and management of pediatric IBD*, Kluwer Academic Publishing, Lancaster, 1997.
11. D. S. Fefferman and R. J. Farrell, *Clinical Gastroenterol Hepatol*, 2005, **3**, 11-24.
12. G. Manes, V. Imbesi, S. Ardizzone, A. Cassinotti, M. Bosani, A. Massari and G. Bianchi Porro, *Digestive and Liver Disease*, 2009, **41**, 653-658.
13. Anonymous, health-cares.net, Editon edn., 2005.

14. I. Angriman, M. Scarpa, R. D'Inca, D. Basso, C. Ruffolo, L. Polese, G. C. Sturniolo, D. F. D'Amico and M. Plebani, *Clinica Chimica Acta*, 2007, **381**, 63-68.
15. J. L. Mendoza and M. T. Abreu, *Gastroentérologie Clinique et Biologique*, 2009, **33**, S158-S173.
16. M. Moscandrew and E. Loftus, *Current Gastroenterology Reports*, 2009, **11**, 488-495.
17. F. v. R. Patrick, V. Els Van de and F. Vaclav, *BMJ*, 2010, **341**.
18. C. Turkay and B. Kasapoglu, *Clinics*, 2009, **65**, 221-231.
19. J. F. Xiao, B. Zhou and H. W. Resson, *TrAC Trends in Analytical Chemistry*, 2012, **32**, 1-14.
20. P. Alex, M. Gucek and X. Li, *Inflammatory Bowel Diseases*, 2009, **15**, 616-629.
21. K. K. Pasikanti, P. C. Ho and E. C. Y. Chan, *Journal of Chromatography B*, 2008, **871**, 202-211.
22. C. E. Garner, S. Smith, P. K. Bardhan, N. M. Ratcliffe and C. S. J. Probert, *Transactions of the Royal Society of Tropical Medicine and Hygiene*, 2009, **103**, 1171-1173.
23. C. S. J. Probert, I. Ahmed, T. Khalid, E. Johnson, S. Smith and N. Ratcliffe, *Journal of Gastrointestinal and Liver Diseases*, 2009, **18**, 337-344.
24. R. Llorach, I. Garrido, M. a. Monagas, M. Urpi-Sarda, S. Tulipani, B. Bartolome and C. Andres-Lacueva, *Journal of Proteome Research*, 2010, **9**, 5859-5867.
25. S. Tulipani, R. Llorach, O. J. Juregui, P. L. Lopez-Uriarte, M. Garcia-Aloy, M. n. Bullo, J. Salas-Salvadore and C. Andres-Lacueva, *Journal of Proteome Research*, 2011, **10**, 5047-5058.
26. J. H. Granger, R. Williams, E. M. Lenz, R. S. Plumb, C. L. Stumpf and I. D. Wilson, *Rapid Communications in Mass Spectrometry*, 2007, **21**, 2039-2045.
27. R. E. Williams, E. M. Lenz, J. A. Evans, I. D. Wilson, J. H. Granger, R. S. Plumb and C. L. Stumpf, *Journal of Pharmaceutical and Biomedical Analysis*, 2005, **38**, 465-471.
28. J. M. Garcia-Manteiga, S. Mari, M. Godejohann, M. Spraul, C. Napoli, S. Cenci, G. Musco and R. Sitia, *Journal of Proteome Research*, 2010, **10**, 4165-4176.
29. R. E. Williams, E. M. Lenz, J. S. Lowden, M. Rantalainen and I. D. Wilson, *Molecular BioSystems*, 2005, **1**, 166-175.
30. I. D. Wilson, R. Plumb, J. Granger, H. Major, R. Williams and E. M. Lenz, *Journal of Chromatography B*, 2005, **817**, 67-76.
31. N. G. Adams and D. Smith, *International Journal of Mass Spectrometry and Ion Physics*, 1976, **21**, 349-359.
32. P. Španěl and D. Smith, *Medical and Biological Engineering and Computing*, 1996, **34**, 409-419.
33. P. Španěl and D. Smith, *European Journal of Mass Spectrometry*, 2007, **13**, 77-82.
34. D. Smith and P. Španěl, *Mass Spectrometry Reviews*, 2005, **24**, 661-700.
35. P. Španěl and D. Smith, *Mass Spectrometry Reviews*, 2011, **30**, 236-267.
36. K. Hopes, M. Cauchi, C. Walton, H. MacQueen, W. Wassif and C. Turner, *Analyst*.
37. D. Smith, K. n. Sovovji and P. Španěl, *International Journal of Mass Spectrometry*, 2012, **319-320**, 25-30.
38. M. Barker and W. Rayens, *Journal of Chemometrics*, 2003, **17**, 166-173.
39. S. Wiklund, E. Johansson, L. Sjöström, E. J. Mellerowicz, U. Edlund, J. P. Shockcor, J. Gottfries, T. Moritz and J. Trygg, *Analytical Chemistry*, 2007, **80**, 115-122.
40. M. Sattlecker, C. Bessant, J. Smith and N. Stone, *Analyst*, 2010, **135**, 895-901.
41. M. T. Hagan, H. B. Demuth and M. Beale, *Neural Network Design*, International Thompson Publishing, Boston, 1996.
42. J. Trygg, E. Holmes and T. r. Lundstedt, *Journal of Proteome Research*, 2007, **6**, 469-479.
43. M. Cauchi, C. Walton, D. Fowler, C. Turner, W. Jia, W. Rebekah, L. Griffiths, C. Dawson, R. Waring, D. B. Ramsden, J. A. Cole, C. Bessant and J. O. Hunter, *Metabolomics*, 2014, **8**.
44. S. Wold, K. Esbensen and P. Geladi, *Chemometrics and Intelligent Laboratory Systems*, 1987, **2**, 37-52.
45. H. Hotelling, *Annals of Mathematics and Statistics*, 1931, **2**, 360-378.
46. M. Otto, *Chemometrics: Statistics and Computer Applications in Analytical Chemistry*, Wiley-VCH, Germany, 1999.
47. G. Tomasi, F. van den Berg and C. Andersson, *Journal of Chemometrics*, 2004, **18**, 231-241.
48. T. Skov, F. van den Berg, G. Tomasi and R. Bro, *Journal of Chemometrics*, 2006, **20**, 484-497.
49. N. Takahashi, G. Boysen, F. Li, Y. Li and J. A. Swenberg, *Kidney Int*, 2006, **71**, 266-271.
50. S. de Jong, *Chemometrics and Intelligent Laboratory Systems*, 1993, **18**, 251-263.
51. R. G. Brereton, *Chemometrics for Pattern Recognition*, John Wiley & Sons, Chichester, UK, 2009.
52. Q. Rahman and G. Schmeisser, *Numerische Mathematik*, 1990, **57**, 123-138.
53. M. H. Zweig and G. Campbell, *Clinical Chemistry*, 1993, **39**, 561-577.
54. J. Westerhuis, H. Hoefsloot, S. Smit, D. Vis, A. Smilde, E. van Velzen, J. van Duijnhoven and F. van Dorsten, *Metabolomics*, 2008, **4**, 81-89.
55. M. J. Campbell and D. Machin, *Medical Statistics: A Common Sense Approach*, 3rd Edition edn., John Wiley & Sons Ltd., Chichester, UK., 1999.
56. Y. J. Kim, M.-J. Sohn and W.-G. Kim, *Biological and Pharmaceutical Bulletin*, 2012, **35**, 791-795.
57. C. Walton, D. P. Fowler, C. Turner, W. Jia, R. N. Whitehead, L. Griffiths, C. Dawson, R. H. Waring, D. B. Ramsden, J. A. Cole, M. Cauchi, C. Bessant and J. O. Hunter, *Inflammatory Bowel Diseases*, 2013, **19**, 2069-2078.
58. A. M. Schoepfer, M.-A. Dehlavi, N. Fournier, E. Safroneeva, A. Straumann, V. Pittet, L. Peyrin-Biroulet, P. Michetti, G. Rogler and S. R. Vavricka, *Am J Gastroenterol*, 2013, **108**, 1744-1753.

Comparison of GC-MS, HPLC-MS and SIFT-MS in Conjunction with Multivariate Classification for the Diagnosis of Crohn's Disease in Urine

M. Cauchi*, D. P. Fowler, C. Walton, C. Turner, R. H. Waring, D. B. Ramsden, J. O. Hunter, P. Teale, J. A. Cole and C. Bessant

