

Journal of Materials Chemistry C

Accepted Manuscript



This is an *Accepted Manuscript*, which has been through the Royal Society of Chemistry peer review process and has been accepted for publication.

Accepted Manuscripts are published online shortly after acceptance, before technical editing, formatting and proof reading. Using this free service, authors can make their results available to the community, in citable form, before we publish the edited article. We will replace this *Accepted Manuscript* with the edited and formatted *Advance Article* as soon as it is available.

You can find more information about *Accepted Manuscripts* in the [Information for Authors](#).

Please note that technical editing may introduce minor changes to the text and/or graphics, which may alter content. The journal's standard [Terms & Conditions](#) and the [Ethical guidelines](#) still apply. In no event shall the Royal Society of Chemistry be held responsible for any errors or omissions in this *Accepted Manuscript* or any consequences arising from the use of any information it contains.

Electron transport in crystalline PCBM-like fullerene derivatives: a comparative computational study[†]

Julien Idé,^{a,‡} Daniele Fazzi,^b Mosè Casalegno,^a Stefano Valdo Meille,^a and Guido Raos^{*,a}

Received Xth XXXXXXXXXXXX 20XX, Accepted Xth XXXXXXXXXXXX 20XX

First published on the web Xth XXXXXXXXXXXX 200X

DOI: 10.1039/b000000x

We present an extensive study of electron transport (ET) in several crystal forms of phenyl-C₆₁-butyric acid methyl ester (PCBM) and 1-thienyl-C₆₁-butyric acid methyl ester (ThCBM) fullerene derivatives. Our calculations are based on a localized representation of the electronic states. Orbital couplings, site energies and reorganization energies have been calculated using various density functional and semi-empirical techniques and used within the Landau-Zener, Marcus and Marcus-Levich-Jortner expressions to evaluate electron transfer rates. Electron mobilities have been then estimated by kinetic Monte Carlo (KMC) simulations. The adiabaticity of electron transfer directions within the different crystal structures has also been verified using the Landau-Zener expression. Finally, the role of low energy virtual orbitals of the fullerene molecules has been investigated using charge transport networks of increasing complexities. Our results show that these molecules may form one-, two- or three-dimensional percolation networks and that their higher energy orbitals often participate to ET. The highest mobility values were obtained for the crystal structure of ThCBM and are comparable to experimental values.

1 Introduction

The synthesis of [6,6]phenyl-C₆₁-butyric acid methyl ester (PCBM) was first reported by Wudl and coworkers in 1995¹. Today, after almost two decades, PCBM is still the most popular *n*-type (*i.e.* electron transporting) material in organic electronics, often in combination with an electron donor polymer such as poly(3-hexylthiophene) (P3HT), as used inside the active layer of organic photovoltaic cells^{2–5}. It is likely that this enduring success would have surprised even PCBM's creators since, according to their original statements,¹ at that time they were simply aiming at a soluble fullerene derivative which could be produced easily and cheaply, and be readily adapted for a variety of purposes through further functionalization reactions. Several attempts have been made to find good alternatives to PCBM^{6–8}, sometimes using relatively sophisticated

“molecular design” approaches (including *ab initio* calculations, for example, to select candidates with suitable electron affinities), but none of them has really taken hold. As a result, it is still very pertinent to ask: what makes PCBM special? Liu and Troisi have recently come up with one possible answer to this question:⁹ unlike most other *n*-type materials, fullerene derivatives such as PCBM have anions with low lying excited states which may take part in charge separation at the interface with the donor polymer (exciton dissociation). This is interesting and useful, as it readily suggests a wide array of potential replacements for this material. On the other hand, this or any other design rule based on single-molecule properties cannot account for the full story, as they neglect all aspects related to molecular interactions and solid state organization, which are obviously crucial for properties such as processing and long-term stability, as well as charge and energy transport.¹⁰

Several experimental studies have evidenced that the structural organization of PCBM in photoactive blends ranges from largely amorphous, to nanocrystalline, to highly crystalline structures,^{11–14} in which the solvent is thought to be absent.¹⁵ The relationship between the structural organization of PCBM molecules and their charge transport properties (electron mobilities, in this case) clearly represents a key issue. A typical approach would be to address it by computational methods, by first carrying out extensive molecular dynamics (MD) simulations, extracting atomistic models from them and finally computing these properties by simulating the drift-diffusion motion of the charge carriers.^{16–18} Indeed, in a previous study,¹⁹ we addressed the first part of

[†] Electronic Supplementary Information (ESI) available: A pdf file containing mathematical derivation of the free energy barriers and rate expressions, numerical data on the Huang-Rhys factors, results for the Marcus and Marcus-Levich-Jortner rate expressions, a discussion of the electric-field dependence of the mobility. An archive file containing one WebGL folder for each crystal structure allowing 3D-visualization (with any HTML5 web browser) of the hopping probabilities derived from the Landau-Zener expression (F3-network). See DOI: 10.1039/b000000x/

^a Dipartimento di Chimica, Materiali e Ingegneria Chimica “G. Natta”, Politecnico di Milano, via Mancinelli 7, IT-20131 Milano, Italy. Fax: +39-02-23993180; Tel: +39-02-23993051; E-mail: guido.raos@polimi.it

[‡] Present address: Laboratory for Chemistry of Novel Materials, University of Mons, Belgium.

^b Max-Planck-Institut für Kohlenforschung, Kaiser-Wilhelm-Platz 1, D-45470 Mülheim an der Ruhr, Germany.

this program by MD simulations of the structural organization of PCBM. Starting from the only two experimental crystal structures which were available at the time,²⁰ respectively for a 1:1 co-crystal with ortho-dichlorobenzene (DCB) and a 2:1 co-crystal with monochlorobenzene (MCB), we developed several models for amorphous, solvent-free PCBM by means of different combinations of solvent abstraction, heating and cooling. On the basis of these simulations, we concluded that a key property of PCBM is that, even in the amorphous state, it can form well-developed three-dimensional networks of electronically coupled fullerene molecules. Later on, Tummala et al.²¹ extended this study by carrying out further MD simulations and computing electron mobilities by kinetic Monte Carlo (KMC) simulations. More recently, other crystal structures have been added to the original pool, including the first solvent-free PCBM structure reported so far^{22,23} (these two papers discuss the same crystal structure, obtained respectively from powder and single-crystal X-ray diffraction) and that of the closely related ThCBM (1-thienyl-C₆₁-butyric acid methyl ester)²⁴, which is obtained from PCBM by replacing the phenyl with a thienyl group (see Figure 1). Our group has identified also other PCBM polymorphs, including one containing dichloromethane (DCM).²⁵ In parallel with these structural investigations, other authors have performed computational studies of the transport properties of fullerene-based materials. MacKenzie et al.²⁶ combined MD and KMC simulations, demonstrating that longer side chains tend to interfere with electron transport. More recently, some authors have cast doubt on the applicability of the hopping models, arguing that the charge-localized picture which underlies this model is in fact inadequate for PCBM. Cheung and Troisi²⁷ highlighted an unusual distribution of thermally accessible localized and delocalized states, which cannot be mapped onto standard models of transport in disordered media. Blumberger and coworkers²⁸ computed electron transfer (ET) rates using a semi-classical rate expression including an adiabatic correction, and pointed out that the activation free energy for hopping can vanish for some strongly coupled fullerenes.

The general aim of the present work is to contribute to the understanding of the relationship between the solid-state organization and the charge transport properties of fullerene derivatives. Are electron mobilities within these fullerene-based materials highly sensitive to the formation of a specific polymorph? Is charge transport more anisotropic in some forms than in others? Could this be hampered by the possible inclusion of solvent molecules? Do the low-lying virtual orbitals characterizing these materials play a role in charge transport? As our starting point, we have taken all the presently available experimental crystal structures of PCBM and ThCBM, which may or may not include solvent molecules. The latter is not as widely used as PCBM, but it is nonetheless very important from our point of view because

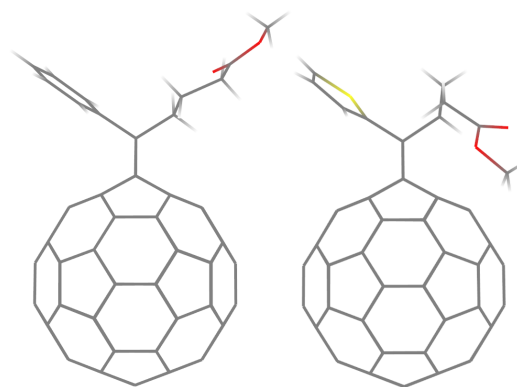


Fig. 1 Molecular structures of PCBM (left) and ThCBM (right).

of its high electron mobility ($2 \text{ cm}^2 \text{ V}^{-1} \text{ s}^{-1}$ along one direction), as measured by time-resolved microwave conductivity on the same single crystals used for its structural determination.²⁴ Electron mobilities have been evaluated using different versions of the hopping model for charge transport, despite its known limitations for fullerene-based materials.^{27,28} Compatibly with these general aims and approach, we have tried to be as thorough as possible by checking the effect of different variables and computational assumptions. In particular, we have investigated: (1) the level of theory in the calculation of the electronic couplings (density functionals with different basis sets and semiempirical methods), (2) the intramolecular reorganization energies of different derivatives, (3) the effect of surrounding molecules on the site energies, (4) the adiabaticity of the electron hopping events, and (5) the complexity of the percolation network entering the KMC simulations, including the contribution of the fullerenes' low-lying virtual orbitals to ET.

2 Computational approach

We have adopted the approach of ref. 28 for the evaluation of the ET rates. On the basis of localized electronic states, we computed ET rates within different crystal structures using the same semi-classical rate expression and verified the non-adiabatic character of the different ET directions by calculating activation free energies. Note that the crystal structures were “frozen”, with all atoms at their experimental (average) positions. The inclusion of thermal fluctuation effects would have required extensive MD simulations of each crystal polymorph. The so-calculated ET rates were then used to perform KMC simulations to derive electron mobilities. For these simulations, percolation networks of various complexity were considered, including higher energy unoccupied orbitals on the fullerene derivatives.

2.1 Electron transfer rates

The ET rates were calculated²⁹ using the following semi-classical rate expression based on the Landau-Zener (LZ) treatment of non-adiabatic transitions^{28,30} (see the ESI[†] for a mathematical derivation):

$$k_{LZ} = \kappa_{el} v_{eff} \exp(-\beta(\Delta E_{na}^{\ddagger} - \Delta)) \quad (1)$$

with

$$\Delta E_{na}^{\ddagger} = \frac{(\lambda + \Delta E_{if})^2}{4\lambda} \quad (2)$$

and

$$\Delta = H_{if} + \frac{\lambda + \Delta E_{if}}{2} - \sqrt{\frac{(\lambda + \Delta E_{if})^2}{4} + H_{if}^2} \quad (3)$$

In this expression, κ_{el} is the electronic transmission coefficient, v_{eff} is the effective nuclear frequency, ΔE_{na}^{\ddagger} is the non-adiabatic energy barrier and Δ is a correction factor relating ΔE_{na}^{\ddagger} to the adiabatic energy barrier ($\Delta E_{ad}^{\ddagger} = \Delta E_{na}^{\ddagger} - \Delta$). H_{if} and $\Delta E_{if} = E_f - E_i$ are respectively the electronic coupling and site energy difference between the initial and final electronic states involved in the ET reaction, and λ is the total reorganization energy. β is $1/k_B T$, where k_B is the Boltzmann constant and T the absolute temperature.

We shall see that under specific conditions these equations predict negative adiabatic “barriers”. In such cases, we have still applied Eq.(1) even though it can lead to ET which are faster than the vibrational time scale. This is an unphysical outcome of the localized hopping description, which however cannot be easily avoided at present.

The LZ approach was chosen to check the adiabaticity of ET directions, via the calculation of adiabatic barriers, consistently with other theoretical work on PCBM.²⁸ However, as many other workers in the field adopt the Marcus (non-adiabatic limit of the LZ expression) or the Marcus-Levich-Jortner (MLJ, quantum-mechanical treatment of non-adiabatic transfer reactions including tunneling effects) expressions, we also computed ET rates using them. In order to keep our discussion mainly focused on the comparison of the different crystal structures, the explicit expressions and the numerical results obtained with these rates are given in the ESI[†]. Overall, we can say that the electron mobilities deriving from the different expressions are comparable in magnitude and they tend to be in the order $\mu_{Marcus} < \mu_{LZ} < \mu_{MLJ}$. The reasons for this are also discussed in the ESI[†]. Thus, even though it would be hard to say whether the LZ approach is really superior to the other two, it has at least the additional advantage of interpolating between them.

2.2 Electron transport simulations

KMC simulations were performed adopting the Bortz-Kalos-Lebowitz (BKL)³¹ algorithm to propagate a single charge car-

rier within the different crystal structures. For this purpose, we have developed an R-package³² for KMC simulations of charge transport, which has been released on “Comprehensive R Archive Network” (CRAN).²⁹ The package also computes the necessary rate constant (LZ, Marcus or MLJ) from their basic quantum chemical ingredients. The mobility tensor $\vec{\mu}$ for each structure was calculated from the expression $\vec{v} = -\vec{\mu}\vec{F}$, in which \vec{F} and \vec{v} are the applied electric field ($|\vec{F}| = 10^6 \text{ V cm}^{-1}$) and drift velocity vectors. The minus sign accounts for the fact that the charge carriers are negatively charged. Our choice for the electric field strength is discussed in the ESI[†], which contains some numerical results for the field-dependence of the mobility in one of the crystal structures. Independent simulations with the electric field along the positive and negative x -, y - and z -directions were performed to build the mobility tensors. Each simulation lasted 10^7 hopping events and was repeated sixteen times with different random numbers (implying different initial positions of the charge). All our simulations were conducted by assuming that hopping events are restricted to neighbouring fullerene molecules, neglecting hopping to/from solvent molecules since these were found to display very high reorganization and site energies. Average hopping probabilities between each pair of molecules were extracted from these simulations and visualized.

The LUMO (L0), LUMO+1 (L1) and LUMO+2 (L2) orbitals are degenerate in C₆₀ and they are relatively close in energy also in its derivatives PCBM and ThCBM. For both of them, $\Delta E_{L0L1} \approx 0.06 \text{ eV}$ and $\Delta E_{L1L2} \approx 0.22 \text{ eV}$, while $\Delta E_{L2L3} \approx 0.9 \text{ eV}$ (B3LYP/6-31G* calculations). Since the thermal energy is $k_B T = 0.026 \text{ eV}$ at room temperature, in principle they could also participate to the electron transport. Somewhat loosely, we may speak of “excited state conduction”, even though L1 and L2 are just one-electron functions which do not correspond to any true excitation of the molecules or their anions. In our view, their true role is to provide some additional flexibility in the description of the electrons’ motion. We shall see that this partly compensates for the lack of thermal fluctuations in our structural models, by allowing some hopping events also among molecular pairs which would be forbidden on the basis of the L0 orbitals.

In our KMC simulations, for each neighbouring pair of molecules (defined on the basis of the coordination numbers reported in Table 1), an electron can be transferred along nine different pathways, related to the interaction between different orbitals centered on each fullerene (L0L0, L0L1, L0L2, L1L0, L1L1, L1L2, L2L0, L2L1 and L2L2). The results from this “F3-network” (where F indicates the Full set of fullerenes, and 3 the number of orbitals per molecule) represent our standard for comparison with other, more approximate mobility simulations. First and foremost, they can be compared with more conventional KMC simulations based on a smaller net-

work containing only the L0 orbitals of all molecules (“F1-network”). Within the lower-symmetry triclinic structures (see below), non-equivalent molecular sites can display significantly different L0, L1 and L2 energies. To determine to what extent the higher energy molecules contribute to ET, two further Reduced percolation networks have been considered in the KMC simulations. The R3-network contains only the lower energy molecules, keeping all their three orbitals. The R1-network contains the same reduced set of molecules, keeping only their L0 orbital.

2.3 Electronic couplings and site energy differences

The electronic couplings and site energies were calculated by the fragment orbital approach described in references 33 and 34, using the ORCA³⁵ and cclib³⁶ packages. In this approach, for a single calculation the entire system is reduced to a dimer and the charge localization is mimicked by using the frontier orbitals of two isolated molecular fragments. In the case of an electron (hole) transfer, the Hamiltonian of the system is built in the basis of the LUMOs (HOMOs) of the monomers constituting the dimer. After re-orthogonalization³⁷, the site energies and transfer integral can be extracted respectively from the diagonal and off-diagonal terms of the transformed Hamiltonian. Thus, we extracted dimers for each ET direction within the different crystal structure and, using neutral state fragment-orbitals, electronic couplings and site energies were calculated at the DFT or semiempirical levels. We point out that, according to a recent paper with high-level hole transfer calculations on a series of small dimers,³⁸ such fragment-based approaches can be expected to underestimate the electronic couplings by 20-30%.

In the approach described above, site energies are calculated on molecular pairs and, since these depend on the dimer used for the calculation, they cannot be considered as true site properties. Furthermore, a calculation based only on dimers will tend to underestimate polarization effects³⁹. Another possible route may consist in using micro-electrostatic (ME) methods, as recently done to investigate energetics at the P3HT/PCBM interfaces⁴⁰ and at the interface between donor-acceptor discotic liquid crystals⁴¹. However, for the present work, ME methods cannot be used as site energies have to be computed for different virtual orbitals. Thus, to obtain better defined and more realistic values, we considered larger clusters centered on each site. To calculate the L0, L1 and L2 energies on a given molecule, we generalized the fragment orbital procedure by building a Hamiltonian for a cluster made up of that molecule with its L0, L1 and L2 orbitals, and its first coordination sphere with its L0 orbital. These site energies will be compared to those from pair calculations in the result section.

2.4 Reorganization energies

The total reorganization energy involved in the electron transfer event investigated here is composed of an intra-molecular contribution λ_i and an outer sphere contribution λ_s arising from the change in the environment's polarizability and medium relaxation due to charge transfer¹⁰:

$$\lambda = \lambda_i + \lambda_s \quad (4)$$

The intra-molecular contributions associated with the transfer of one electron were evaluated by using the adiabatic potential (AP) approach, which is also known as the “four point method”. The outer sphere contribution cannot be so easily estimated for charge transport processes in solid state media. In the past few years, some efforts have been done in this direction by the groups of Bredas⁴², Troisi⁴³ and Andrienko⁴⁴, who evaluated λ_s by hybrid QM/MM methods. However, only the class of acenes compounds has been studied in depth. The use of continuum theory is another possible route, which has been followed by Gajdos *et al.*²⁸. According to their evaluations, λ_s in PCBM crystals turns out to be in the range of 25-36 meV. In our study λ_s has been taken equal to 36 meV, the upper limit of this range, thus enhancing charge localization.

Another important parameter entering Eqn. (1) is the effective nuclear frequency. To access this parameter, the Huang-Rhys (HR) factors S_j (electron-phonon coupling terms) have been computed from the displacement parameters (see the ESI[†]) as in references 45 and 46. Since low-frequency vibrations can be described to a good approximation in classical terms, and because of their possible anharmonicity⁴⁷ (they are typically associated with large-amplitude librations around single bonds), the contributions for vibrational modes below 250 cm⁻¹ were not included in the evaluation of the effective nuclear frequencies of PCBM and ThCBM. This cutoff falls below the lowest vibrational frequency of C₆₀, so that all vibrations associated with the fullerene cage are treated quantum mechanically, and all the low-frequency “classical” vibrations are associated with the side groups. The effective nuclear frequency can then be written as:

$$\nu_{eff} = \sum_j^{harmonic} \nu_j \frac{S_j}{\sum_k S_k} \quad (5)$$

where ν_j are the normal mode frequencies above the cutoff and S_j are the associated HR factors.

For the evaluation of λ_i and ν_{eff} , the hybrid B3LYP DFT functional and the double split 6-31G** basis set have been considered. The equilibrium geometries of the neutral and anionic states of the different species have been fully optimized, and the respective vibrational force fields have been evaluated to compute the HR factors. These calculations involved a standard, single-determinant representation of the electron density. In principle, a multi-configuration approach would have

been more accurate (with an appropriate choice of the active space!) and consistent with our ET simulations including the low-lying L1 and L2 orbitals, but presently such calculations are still too demanding for molecules of this size. All these calculations have been carried out with the Gaussian09 program.⁴⁸

3 Results and discussions

Overall, we have investigated six crystal structures. Four are PCBM co-crystals obtained by crystallization from dichloromethane (DCM)²⁵, monochlorobenzene (MCB)²⁰, ortho-dichlorobenzene (DCB)²⁰ and CS₂²⁴, all of which contain guest solvent molecules. One is the solvent free structure (*n*-PCBM) recently described by our group²² (related to the one obtained from DCB) and the last one is a co-crystal of ThCBM, recently obtained from CS₂ by Choi *et al.*²⁴. Table 1 summarizes the space group, the number of solvent molecule per unit cell as well as the PCBM (ThCBM) coordination numbers for each crystal structure (the latter can be defined as the number of fullerene molecules directly adjacent to a given one). Histograms (not shown) of the fullerene-fullerene distances were computed to determine a reliable cutoff (1.1 nm) for the definition of the first nearest-neighbours for each crystal structure. Four of the structures are monoclinic ($P2_1/c$ or $P2_1/n$ space groups). Their unit cells contain four PCBM molecules, all of which are related by symmetry. The two remaining structures are triclinic ($P\bar{1}$ space group) and they contain two non-equivalent pairs of symmetry-related fullerene molecules. In the triclinic structures we report two coordination numbers, respectively for the first and second set of non-equivalent molecules, which in one case (ThCBM/CS₂) are different from each other.

Table 1 Structural information of the different crystal structures

Names	Space groups	Coordination numbers	Solvent molecules	Refs
PCBM/DCM	$P2_1/c$	7	2	25
PCBM/CS ₂	$P2_1/c$	7	2	24
PCBM/DCB	$P2_1/n$	6	4	20
<i>n</i> -PCBM	$P2_1/n$	8	-	22
PCBM/MCB	$P\bar{1}$	7/7	2	20
ThCBM/CS ₂	$P\bar{1}$	7/10	5	24

In the following section we: (a) report the calculation of the reorganization energies and effective mode frequencies of PCBM and ThCBM and compare then with those of C₆₀, (b) discuss the electronic couplings and site energies, including the effects of theory level and solvent molecules, and identify the conditions for the possible breakdown of the hopping model, (c) report and rationalize the mobility tensors corre-

sponding to percolation networks of various complexities for each crystal structure.

3.1 Reorganization energies

Table 2 AP intra-molecular reorganization energy and associated effective mode energy/frequency for C₆₀, PCBM and ThCBM

	λ_i /eV	$h\nu_{eff}$ /eV	ν_{eff} /cm ⁻¹
C ₆₀	0.1356	0.1108	894
PCBM	0.1496	0.1612	1300
ThCBM	0.1510	0.1798	1450

The AP intra-molecular reorganization energy for C₆₀ (used as a reference system for comparison), PCBM and ThCBM are reported in Table 2. Values for C₆₀ and PCBM agree with literature data^{27,30,49} while for ThCBM this is, to the best of the authors' knowledge, the first evaluation of λ_i . C₆₀ features the lowest reorganization energy among all the compounds, since the extra electron is fully delocalized over in the π -electron carbon cage. PCBM and ThCBM show slightly higher reorganization energies (> 0.015 eV) due to the phenyl and thienyl lateral groups which change locally the π -electronic structure of the fullerene and introduce extra vibrational modes in the charge relaxation process.

To better understand the role of the local electron-phonon coupling parameters upon charge transfer, λ_i has been decomposed over all the vibrational normal modes of the neutral and charged species and both contributions (i.e. projection of the neutral geometry on the anion state and viceversa) are reported in Figure 2 for each compound (numerical values are in the ESI[†]). We can observe that the introduction of the phenyl (PCBM) and thienyl (ThCBM) lateral group on the C₆₀ carbon cage perturb the local electron-phonon couplings changing those normal modes sensitive to the electron transfer process. Overall, the values of S_j terms are higher for PCBM or ThCBM with respect to the C₆₀ case. PCBM and ThCBM present a few normal modes very sensitive (i.e. high reorganization) to the charge transfer process, showing HR factors of the order of 0.1. In particular, for PCBM we have the 903 cm⁻¹ ($S = 0.12$), 1490 cm⁻¹ ($S = 0.09$) and 1800 cm⁻¹ ($S = 0.06$) active vibrations, while for ThCBM the 902 cm⁻¹ ($S = 0.28$), 1490 cm⁻¹ ($S = 0.095$) and 1827 cm⁻¹ ($S = 0.16$). These vibrations represent C=C/C-C oscillations of the C₆₀ cage and C=O stretching of the carbonyl bond.

On the basis of these HR factors we computed the ν_{eff} values compiled in Table 2. The high effective frequencies obtained for PCBM and ThCBM reflect not only the higher reorganization energy with respect to C₆₀ but also the high anharmonicity of low energy normal modes introduced by the side groups. The λ_i and ν_{eff} values reported in this section have

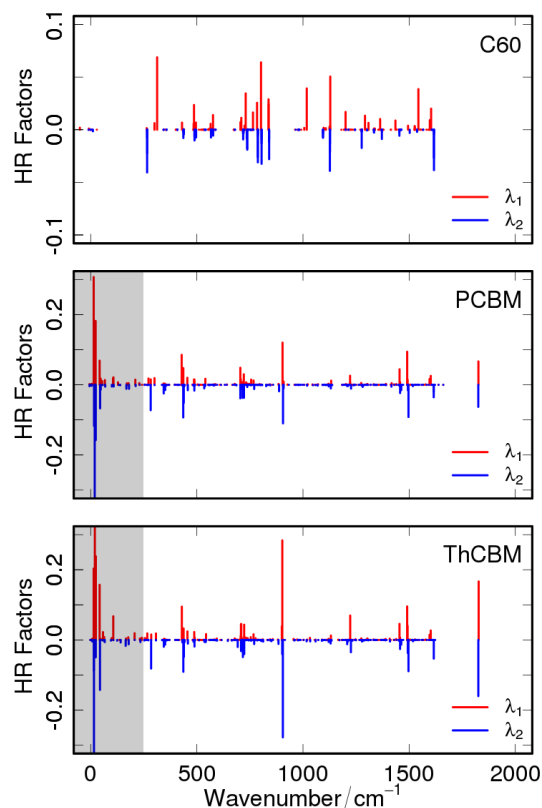


Fig. 2 Computed B3LYP/6-31G** Huang-Rhys factors ($|S_j|$) for C₆₀ (upper panel), PCBM (middle panel) and ThCBM (bottom panel). The grey area indicate the anharmonic region. Red and blue bins correspond respectively to the contributions of the neutral (λ_1) and negatively charged (λ_2) species

been used in Eqn. (1), with the other ET parameters, for the evaluation of the rates.

3.2 Electronic properties and adiabaticity

Electronic couplings were calculated at the DFT level using the B3LYP functional and the 3-21G basis set. This choice was made on the basis of preliminary calculations on seven different PCBM dimers. The couplings between their L0, L1 and L2 orbitals were computed at the DFT level using the B3LYP and BLYP functionals and the 6-311G**, 6-31G*, 3-21G and STO-3G basis sets, and at the semi-empirical level using the ZINDO/S, AM1 and PM3 parameterizations.

Figure 3 shows a correlation diagram of these electronic couplings which demonstrates the substantial agreement among the DFT calculations, with the exception of those using a minimal basis set. The latter provide couplings which are intermediate between the non-minimal DFT and

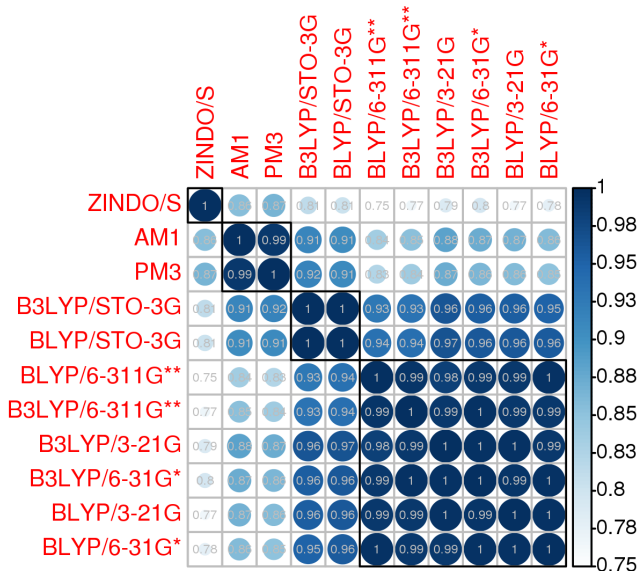


Fig. 3 Correlation diagram (obtained with the “corrplot” library⁵⁰ of the R project³²) of the electronic couplings calculated between the L0, L1 and L2 orbitals of seven different PCBM dimers at different DFT and semi-empirical levels

the rescaled AM1 or PM3 calculations (the correlations represented in Figure 3 are independent of such scaling). It is also interesting to point out that, even if the ZINDO/S electronic couplings are comparable in magnitude to the DFT calculations (this is well known, and is one reason why they have been frequently used^{17,26,27}), Figure 3 indicates that ZINDO/S results don’t correlate so well with DFT results. The scaling factor between the semi-empirical results and the DFT results obtained with the largest basis set (6-311G**) have been computed by linearly fitting the data obtained at each level of calculation plotted as a function of each other (not shown). The scaling factors (the slope of the linear fits) reported in Table 3 confirm that the ZINDO/S electronic couplings are closer to the DFT than the AM1 or PM3.

Site energies were estimated at the semiempirical level using the AM1 parameterization. This choice was dictated by the need to maintain reasonable computational times even for large clusters of fullerene and solvent molecules, which are responsible for sizeable polarization effects. A correlation diagram similar to Figure 3 has been included in the ESI[†] (see Figure S4) for the site energy differences. It demonstrates that, even though there are some differences among the computational levels, these are much more limited than for the couplings, since the correlation coefficients obtained from the dimer calculations are always comprised between 0.94 and 1.

The scaling factors in Table 3 support our choice, as the AM1 parameterization is the one which provide the best fitting of the DFT results.

Table 3 Scaling factors for the semi-empirical (AM1, PM3 and ZINDO/S) results to produce electronic couplings (top) and site energy differences (bottom) fitting with the DFT (B3LYP and BLYP) results obtained with the largest basis set (6-311G**)

		AM1	PM3	ZINDO/S
H_{ij}	B3LYP/6-311G**	4.37	6.63	2.43
	BLYP/6-311G**	3.73	5.66	2.07
ΔE_{ij}	B3LYP/6-311G**	1.12	0.97	1.19
	BLYP/6-311G**	0.98	0.85	1.04

Figure 4 collects the site energies for all crystal structures, in the cases with (a) isolated fullerene molecules, (b) fullerenes surrounded by their nearest neighbors, excluding the solvent molecules and (c) fullerenes with their nearest neighbors, including the solvent. In the latter case, when the solvent molecules have some positional/orientational disorder (PCBM/DCM and PCBM/MCB), site energies were calculated for all possible configurations. Finally, for the sake of comparison, we also give (d) the site energies extracted from the dimer calculations (i.e., those used for the evaluation of the electronic couplings).

The position of the L0, L1 and L2 levels calculated on isolated molecules depend on the crystal structure because of subtle differences in the PCBM (ThCBM) molecular geometries. In particular, the conformation of the PCBM and ThCBM side chains can lead to specific intra-molecular interactions which shift these levels. For the same reason, non-equivalent molecules in triclinic structures also present slightly different L0, L1 and L2 energies. The L0L0, L1L1 and L2L2 site energy differences between non-equivalent sites may be neglected when considering isolated molecules, but they become much larger when including polarization effects from neighbouring fullerene derivatives (b). Thus, the L0 and L1 as well as the L1 and L2 levels of non-equivalent sites may become very close in energy and they actually cross each other in the case of the ThCBM/CS₂ structure (i.e., the L1 level of one molecule is lower than the L0 level of another, and similarly for the L2/L1 levels). The smallness of L0L1 and L1L2 site energy differences points to the possible contribution of the higher energy virtual orbitals to ET in the triclinic structures. At the same time, the site energies for the monoclinic structures suggest that only L0 contributes to ET. These indications have been checked by explicit KMC simulations, to be discussed below.

The inclusion of the solvent molecules in the coordination spheres (c) produces an additional shift of the fullerene levels. This shift appears to be more pronounced for the po-

lar solvents. Indeed, when comparing the PCBM/DCM and PCBM/CS₂ structures, which belong to the same space group and have very similar lattice parameters, we find that the levels of the PCBM/CS₂ structure are almost unchanged while those of the PCBM/DCM structure are slightly shifted toward higher or lower energy, depending on the positions/orientations of the solvent molecules. This effect is even more pronounced for the PCBM/MCB structure, as the levels obtained for the different positions/orientations of the solvent molecules are spread to the point that they form a near-continuum structure. This is due partly to the polarity of MCB, partly to the fact that there are three solvent molecules surrounding each PCBM in this structure (DCM is also polar, but there are only two solvent molecules adjacent to the PCBM in the PCBM/DCM structure).

The calculations in case (c) show that, even though solvent molecules do not directly participate to charge transport (they have high energy orbitals and large reorganization energies), they might have an indirect effect by producing a spread in the fullerene orbital energies. However, the importance of this energy spread depends also on the solvent dynamics. For slow solvent reorientational motions, the electron would “see” a static distribution of energy levels whereas, for fast solvent motions, it would feel an effective, narrower distribution centered about the average value. It turns out that the structure with the wider distribution (PCBM/MCB) is also the structure which, according to our previous MD simulations¹⁹, has the fastest solvent rotations. For this reason, and for the sake of simplicity, we have neglected the solvent contribution to the site energies and used those from the (b) case in our KMC simulations.

The results of (d) case calculations on the fullerene dimers are rather far both from the isolated molecules and from the molecules within a large cluster. This confirms that the site energies from the dimer calculations are ill-defined and they cannot be used reliably in a KMC simulation.

Figure 5 contains level plots of ΔE_{ad}^{\ddagger} as a function of the orbital couplings and energy differences, for each crystal structure (in principle, the barrier depends also on the reorganization energies, but these are fixed parameters here). For some specific transport directions, we obtain negative adiabatic barriers for ET (points within the grey regions in the Figure). This was observed also by Blumberger *et al.*²⁸, who justified this result on the basis of the inter-orbital couplings (for large couplings, an electron cannot be considered localized, as it spreads over strongly coupled molecules). However, these authors restricted their analysis to the L0L0 transfers and neglected the effect of site energy differences, even for the triclinic crystal structures with non-equivalent fullerene molecules. Our results for the sign of ΔE_{ad}^{\ddagger} are somehow different from theirs, due to smaller electronic couplings and to the fact that our calculations include the effect of site en-

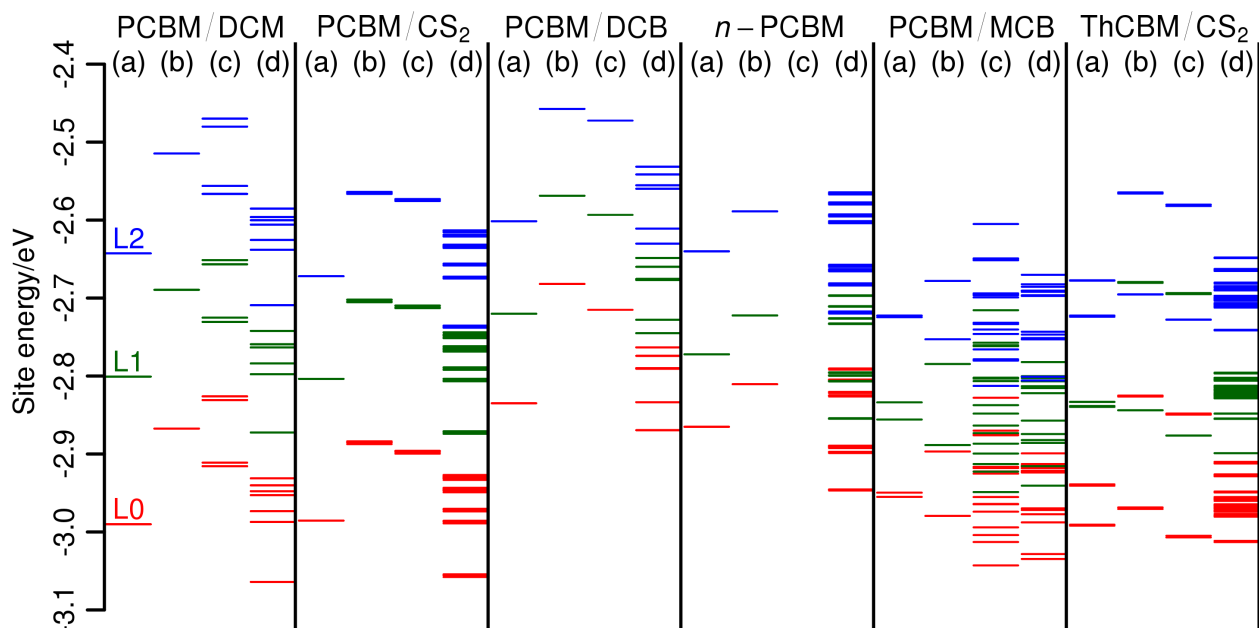


Fig. 4 Site energies (L0 in red, L1 in green and L2 in blue) within the different crystal structures as calculated on (a) isolated fullerenes (b) fullerenes surrounded by their first coordination spheres, removing solvent molecules (c) fullerenes surrounded by their first coordination sphere, including solvent molecules (d) fullerene dimers

ergy differences. These cannot be neglected, both because we consider three orbitals instead of one, and because some of our crystal structures (the triclinic ones) include PCBM or ThCBM molecules which are unrelated by symmetry.

Three different types of ET can be distinguished in Figure 5: “flat” (L0L0, L1L1, L2L2; green symbols), “upward” (L0L1, L1L2, L0L2; blue symbols) and “downward” (L1L0, L2L1, L2L0; red symbols). For the monoclinic structures, as no positional disorder has been introduced in our model, the flat, upward and downward ETs are respective athermal ($\Delta E_{if} = 0$), endothermic ($\Delta E_{if} > 0$) and exothermic ($\Delta E_{if} < 0$). For the triclinic structures, for which the L0, L1 and L2 levels of non-equivalent sites can cross each other, the sign of the site energy difference cannot be related any more to the type of ET (for example, there can be upward but exothermic L0L1 electron transfers).

It appears that for the monoclinic structures the ET pathways within the F1-networks defined in section 2.2 (light green squares in the first four panels) never reach the negative region of the maps. This suggests that the hopping model is acceptable for these percolation networks including only LUMO-LUMO transitions. However, looking at the F3-networks (all red, green and blue points), a major part of the exothermic pathways (red points) display negative ΔE_{ad}^{\ddagger} .

For the triclinic structures, even the F1-networks display some negative barriers (light green squares in the last two panels), corresponding to ET between non-equivalent sites with different LUMO energies.

To summarize, in our model ΔE_{ad}^{\ddagger} can be negative for two distinct reasons: (i) large electronic couplings, leading to charge delocalization as proposed by Blumberger and coworkers²⁸, but also (ii) large site energy differences, preventing charge localization on high energy sites even for fairly small electronic couplings. In principle, low energy fullerene sites may act as shallow traps driving ET. The KMC simulations will allow us to check this hypothesis.

3.3 Percolation networks

Using the electronic couplings, site energies and reorganization energies described in the previous sections, ET rates have been evaluated for each crystal structure according to the LZ expression (see the ESI[†] for the Marcus and MLJ rates). Rather than presenting large tables of numbers, which would be of limited interest due to the approximations in our calculations, we will resort to graphical representations produced with the “Rpdb”⁵¹ and “rgl”⁵² packages. These serve better our main purpose, that is to get a feeling for the consequences

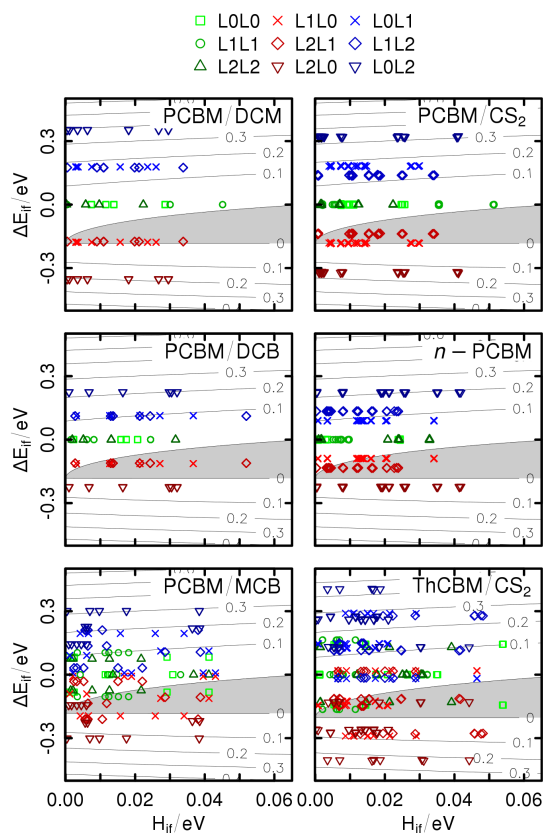


Fig. 5 Level plot (in the $[H_{if}, \Delta E_{if}]$ plane) of the adiabatic free energy barriers (in eV) for the different crystal structures. The grey area indicates the negative region of the plot. The green, red and blue symbols indicate respectively the flat, downward and upward ET directions

of molecular packing on the ET properties of these fullerene derivatives.

Figure 6 presents the ET rates which define the F1-network for each crystal structure. The rates are represented by orange cones, whose tips point towards one molecule and whose bases are proportional to the rate to that molecule (i.e., the radius is proportional to the square root of the rate). The reader may think of them as funnels, channeling electrons towards their destination site. Note that the scaling factor connecting the size of the cones to the ET rates is the same of all crystal structures. Therefore, they provide a clear representation of the dimensionality of the percolation networks (one-, two- or three-dimensional transport), of the main electron transport directions, and of the relative ET rates within different crystal structures.

The cones in Figure 6 show that the ET pathways within

PCBM/DCM and PCBM/CS₂ form a well-developed three-dimensional network, with a certain preference for the *a*-axis. Note the strong similarity between transfer networks in these two crystals, which reflects the analogy in their fullerene packings. Upon closer scrutiny, it turns out that the ET rates along *a* are actually 1.3 times larger in PCBM/DCM, in agreement with the slightly lower value of this lattice parameter. The two other monoclinic structures have lower dimensionality percolation networks. PCBM/DCB is essentially two-dimensional, in agreement with the alternation of PCBM and solvent layers along the $(1\ 0\ \bar{1})$ direction. Surprisingly, the *n*-PCBM network is the one with the lowest connectivity. The graphical representation of the rates indicates that the electrons may zig-zag comfortably only along the *b*-axis. A very short contact distance (2.9 Å) between PCBM molecules along that direction is at the origin of these zig-zag. Finally, the ET networks of the triclinic structures are more complex due to the presence of two distinct sets of non-equivalent fullerenes. The hopping rate from one to the other set can be one order of magnitude (or more) larger than the opposite one, and this is borne out by the very asymmetric double cones connecting them. It is difficult to decide on the dimensionality of their percolation networks by looking at these figures. In principle, the fullerenes at the end of the thickest cones might dominate charge transport.

The ET rates represented in Figure 6 correspond to the L0L0 transitions forming the F1-networks. It is extremely difficult to obtain and interpret a similar representation of the F3-networks, which include transitions to/from the L1 and L2 orbitals (there are actually 18 such transitions between any pair of neighbouring fullerenes!). To understand the role of the higher energy orbitals and to answer some of the questions raised above, we carried out the KMC simulations described in the following section.

3.4 Electron transport simulations

To confirm and extend our previous conclusions on the charge transport properties of the crystals, which were based on the rates for the L0L0 transfers, we carried out KMC simulations on the F1- and F3-networks. For the triclinic structures, the role of high energy molecules was also investigated by constrained KMC simulations on the R1- and R3-networks. The numerical results for the electron mobilities have been collected in Table 4 and, for the F1- and F3-networks, they are also represented graphically in Figure 7.

Figure 7 illustrates both the mobility tensors (ellipsoids) and the recorded probabilities of the electron hops between neighbouring molecules in the F1- and F3-networks (respectively on the left and right part of the figure). For the probabilities, we use again a representation in terms of cones, but now the area at the base of each cone is proportional to the number of hops towards a given site. Note that the pair of

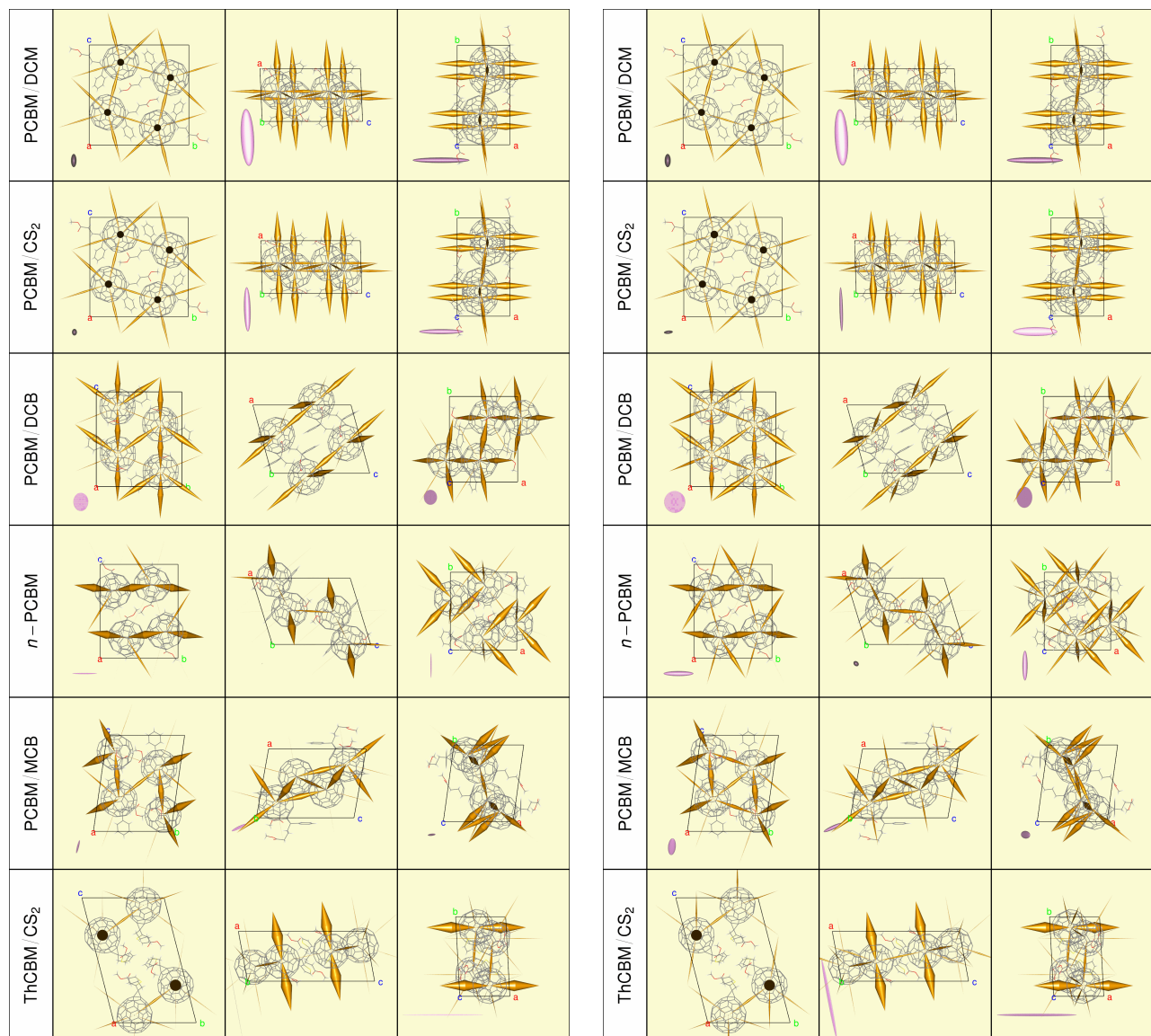


Fig. 7 Effective hopping probabilities (cones) and associated mobility tensors (ellipsoids) within the F1-networks (left) and F3-networks (right), obtained for the KMC simulations with the LZ rates.

Table 4 Eigenvalues ($\text{cm}^2\text{V}^{-1}\text{s}^{-1}$) and eigenvectors of the mobility tensors calculated considering either the F1-, F3-, R1- or R3-networks (using the LZ rates) for each crystal structure

PCBM/DCM					PCBM/CS ₂				
	Eigenvalues	Eigenvectors			Eigenvalues	Eigenvectors			
		x	y	z		x	y	z	
F1	1.03	-1.00	0.00	0.01	0.80	1.00	0.00	-0.01	
	0.24	0.01	0.00	1.00	0.12	0.00	0.02	1.00	
	0.10	0.00	-1.00	0.00	0.09	0.00	1.00	-0.02	
F3	1.02	-1.00	0.00	0.01	0.80	1.00	0.00	0.00	
	0.24	0.01	0.00	1.00	0.16	0.00	0.99	0.17	
	0.11	0.00	-1.00	0.00	0.06	0.00	-0.15	0.99	
PCBM/DCB					<i>n</i> -PCBM				
	Eigenvalues	Eigenvectors			Eigenvalues	Eigenvectors			
		x	y	z		x	y	z	
F1	0.37	-0.43	0.00	-0.90	0.45	0.00	1.00	0.00	
	0.27	0.00	-1.00	0.00	0.02	-0.59	0.00	-0.81	
	0.00	0.90	0.00	-0.43	0.01	-0.80	0.00	0.60	
F3	0.44	-0.43	0.00	-0.90	0.54	0.00	-1.00	0.00	
	0.38	0.00	1.00	0.00	0.11	0.81	0.00	-0.58	
	0.00	-0.90	0.00	0.43	0.08	-0.61	0.00	-0.79	
PCBM/MCB					ThCBM/CS ₂				
	Eigenvalues	Eigenvectors			Eigenvalues	Eigenvectors			
		x	y	z		x	y	z	
F1	0.30	-0.62	-0.19	-0.76	1.49	1.00	0.00	0.00	
	0.05	-0.74	0.50	0.46	0.02	0.00	-1.00	-0.08	
	0.05	0.53	-0.81	-0.24	0.00	0.00	0.00	1.00	
F3	0.36	0.59	0.10	0.80	1.48	1.00	0.00	-0.01	
	0.15	-0.11	-0.98	0.15	0.07	0.00	0.50	0.87	
	0.08	0.82	-0.15	-0.55	0.03	0.00	0.92	-0.40	
R1	0.07	1.00	0.00	0.00	1.45	1.00	0.00	0.00	
	0.00	0.01	1.00	0.00	0.00	0.00	-0.18	-0.98	
	0.00	-0.03	-0.18	0.98	0.00	0.00	-0.93	0.37	
R3	0.08	1.00	0.00	0.00	1.44	-1.00	0.00	0.00	
	0.00	0.01	1.00	0.00	0.00	0.00	0.18	0.98	
	0.00	0.00	0.84	0.54	0.00	0.00	-0.99	0.11	

cones connecting two fullerenes is symmetric, even in the triclinic structures with high- and low-energy molecules. The reason is the compensation between site-occupancies (P_i) and hopping probabilities (π_{ij}), which follows from the detailed balance condition: $P_i\pi_{ij} = P_j\pi_{ji}$.

We first discuss the KMC results for the F1-networks, which neglect the effect of higher energy orbitals (Figure 7 left). First of all, the dimensionality of the electron transport networks is confirmed for all monoclinic structures (3D for PCBM/DCM and PCBM/CS₂, 2D for PCBM/DCB, 1D for *n*-PCBM). The simulations confirm also the similarity between the first two structures. Their mobility ellipsoids are strongly oriented along the short *a*-axis, but they have non-negligible components also in the orthogonal directions. Like the hopping rates, the ratio of their long axes is close to 1.3 (see Table 4). The two other monoclinic structures forbid electron transport along one or two directions, as indicated by the presence of near-zero mobility components. Going to the triclinic structures, PCBM/DCB is the one with the lowest mobilities. Transport is three-dimensional, but even the largest component is relatively small. Strikingly, in this structure, both high- and low-energy molecule contribute to transport, as confirmed by comparison with the reduced R1-network (the largest mobility is reduced by a factor of four, and its two orthogonal components become exactly zero). Instead, the F1 and R1 mobilities are very similar in the ThCBM/CS₂ structure. Thus, only low energy fullerene molecules contribute to charge transport, which is strongly one dimensional and oriented along the *a*-axis, in agreement with experiment.²⁴ Here the “electron channels” are perfectly linear, unlike those of *n*-PCBM which appear to be zig-zag-like. The large mobility associated with these channels ($1.48 \text{ cm}^2\text{V}^{-1}\text{s}^{-1}$) is in good agreement with the experimental value ($2 \text{ cm}^2\text{V}^{-1}\text{s}^{-1}$), considering the approximations in our electron hopping model and the neglect of thermal motions. We also found for the ThCBM crystal structure a very large anisotropic factor as experimentally observed by Fukuzumi *et al.*²⁴

The analysis of the site energies reported above suggested that triclinic should be more sensitive than monoclinic structures to the inclusion of higher energy orbitals (F3-networks, see the right-hand-side of Figure 7). Indeed, it has only little effect on the first two monoclinic structures but it does have an effect on the other two. While the two non-zero mobility components of the PCBM/DCB structure are increased by 20-30% and transport remains two-dimensional; the *n*-PCBM structure switches from almost perfectly one-dimensional to a highly anisotropic three-dimensional transport. Similarly, the higher energy orbitals increase the average value as well as the isotropy of the mobility within the PCBM/DCB crystal. Instead, relatively minor effects are observed in the ThCBM structure which remains the most efficient but one-dimensional electron transporter. This is also confirmed by

the R3-network simulations.

The individual ET rates can vary between 10^4 and 10^{13} s^{-1} , with significant differences among the different crystal structures. Their values are given in the form of histograms in Figure 8. They are decomposed according to whether they involve only the F1-network (LOLO transitions), they lead from the F1-network to some higher energy orbital (LOL1 and LOL2 transitions), or otherwise (L1L1, L2L2, L1L2, L2L1, L2L0, L1L0 transitions; the ESI[†] contains further histograms with a complete decomposition by type of transition). The structures which are insensitive to the L1 and L2 orbitals (PCBM/DCM and PCBM/CS₂) have an order-of-magnitude separation between the LOLO transitions and the LOL1 and LOL2 ones. Thus, the higher energy orbitals are irrelevant and transport is confined to the F1-network. In the other structures, there is some overlap between the distributions of these type of transitions, implying a competition between ground- and excited-state transport. The low sensitivity of the ThCBM/CS₂ structure despite this overlap is due to a particular connectivity of its networks which confine the transport to the R1-network.

4 Summary and conclusions

Progress in organic electronics and photovoltaics requires a thorough understanding of structure-property relationships. These include not just molecular structure and properties, which from a computational point of view can be now tackled by standard quantum chemical methods, but also supramolecular aspects arising from intermolecular interactions. These are much harder to approach by purely computational methods and, as result, it is almost imperative to combine computational and experimental data on well-defined systems. We have taken such an approach in this study, which has focussed on the relationship between molecular structure, intermolecular packing and electron transport properties for PCBM — currently the most widely used *n*-type material — and ThCBM — a new, closely related fullerene derivative.

We have considered all the available experimental crystal structures of these compounds and applied a hopping model based on a Landau-Zener estimate of the charge transfer rates. Mobility tensors were evaluated by KMC simulations which, in some cases, included the possibility of electron transfer events to/from higher-than-LUMO orbitals. Our results can be summarized as follows:

- PCBM-like molecules may crystallize in different polymorphs forming one-, two- or three-dimensional percolation networks.
- The dimensionality of the electron percolation networks depends on the distribution of the inter-fullerene distances. High electron mobility directions are typically

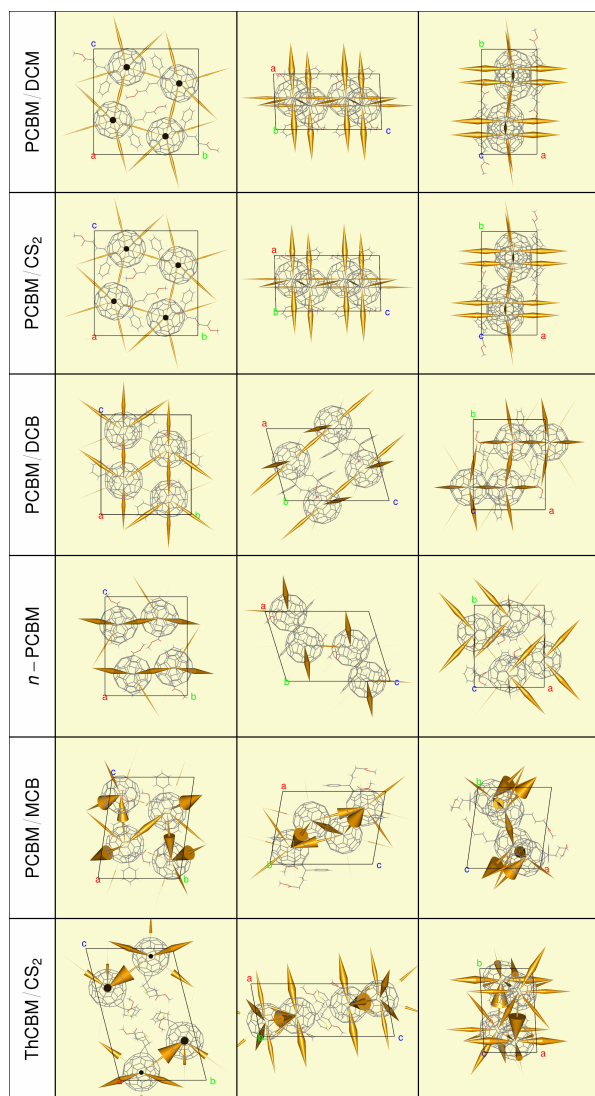


Fig. 6 Representation of the Landau-Zener ET rates for the L0L0 transitions (cones with bases proportional to the rates, pointing towards the destination fullerene), forming the F1-networks

associated with short inter-fullerene distances. For this reason, crystal structures with a short lattice vector display high electron transporting linear channels along that direction.

- The fullerenes' LUMO+1 and LUMO+2 orbitals may participate to electron transport. This is especially important for triclinic structures with non-equivalent fullerene molecules as, for example, the LUMO+1 orbital on one molecule may be degenerate with the LUMO on another. By extrapolation, we expect this "excited state conduction" to be even more important for amorphous struc-

tures, where each molecule has a different geometry and environment.

- The highest mobility value has been obtained for a particular direction of the ThCBM/CS₂ structure, in which electron transport is highly anisotropic because of perfectly aligned channels presenting high electron transfer rates. We find a mobility of $1.48 \text{ cm}^2 \text{ V}^{-1} \text{ s}^{-1}$ associated to that direction which is in good agreement with the experimental mobility value recently reported by Fukuzumi *et al.* ($2.0 \text{ cm}^2 \text{ V}^{-1} \text{ s}^{-1}$). ThCBM molecules which dominate charge transport are actually in a low coordination environment (coordination number = 7), while there is a second set of molecules with a higher coordination (10) which make a minor contribution to the mobility.

Further work is currently in progress in order to identify and characterize other crystalline forms of PCBM and new fullerene derivatives.²⁵ The availability of further structural and mobility data on well-defined crystal forms will provide a useful testing ground for current charge transport models. Indeed, there is a real need for new models and computational approaches, overcoming the picture of discrete hopping events among localized electronic states.^{53,54} Its fundamental inadequacy, which for PCBM already been pointed out by others,^{27,28} emerges here from the fact that some of our calculated ET rates ($10^{13} \text{ s}^{-1} \simeq 300 \text{ cm}^{-1}$) are comparable with the vibrational frequencies of the fullerene cage. As a result, the time scale separation assumed by transition-state-type approaches simply does not apply. Suitable extensions of a recently proposed coarse-grained quantum-chemical model of these materials⁵⁵ may prove to be useful in this context.

5 ACKNOWLEDGEMENTS

This work was supported by the the Fondazione Cariplo (PLENOS project, ref. 2011-0349) and by Regione Lombardia and CINECA through a LISA supercomputer grant (SIPONS project). We thank Jérôme Cornil and Yoann Olivier from the University of Mons for helpful discussions on the electric field dependency of the electron mobility.

References

- 1 J. Hummelen, B. Knight, F. LePeq, F. Wudl, J. Yao and C. A. Wilkins, *The Journal of Organic Chemistry*, 1995, **60**, 532–538.
- 2 B. C. Thompson and J. M. J. Fréchet, *Angewandte Chemie International Edition*, 2008, **47**, 58–77.
- 3 G. Dennler, M. C. Scharber and C. J. Brabec, *Advanced Materials*, 2009, **21**, 1323–1338.
- 4 R. Po, M. Maggini and N. Camaioni, *The Journal of Physical Chemistry C*, 2010, **114**, 695–706.
- 5 M. T. Dang, L. Hirsch and G. Wantz, *Advanced Materials*, 2011, **23**, 3597–3602.

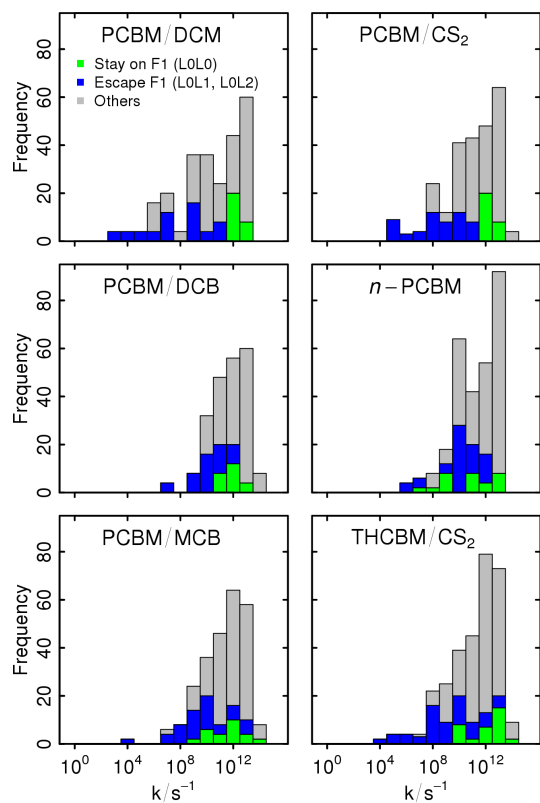


Fig. 8 Decomposition of the LZ ET rates distributions of the different crystal structures. Green and blue bins are respectively the contributions of transitions forming the F1-network (L0L0) and those allowing to escape from it (L0L1 and L0L2).

- 6 F. G. Brunetti, R. Kumar and F. Wudl, *Journal of Materials Chemistry*, 2010, **20**, 2934.
- 7 A. M. López, A. Mateo-Alonso and M. Prato, *Journal of Materials Chemistry*, 2011, **21**, 1305–1318.
- 8 J. S. Moore, *Journal of the American Chemical Society*, 2008, **130**, 12201–12203.
- 9 T. Liu and A. Troisi, *Advanced Materials*, 2013, **25**, 1038–1041.
- 10 J.-L. Brédas, D. Beljonne, V. Coropceanu and J. Cornil, *Chemical Reviews*, 2004, **104**, 4971–5003.
- 11 K. H. Lee, P. E. Schwenn, A. R. G. Smith, H. Cavaye, P. E. Shaw, M. James, K. B. Krueger, I. R. Gentle, P. Meredith and P. L. Burn, *Advanced Materials*, 2011, **23**, 766–770.
- 12 N. D. Treat, M. A. Brady, G. Smith, M. F. Toney, E. J. Kramer, C. J. Hawker and M. L. Chabiny, *Advanced Energy Materials*, 2011, **1**, 82–89.
- 13 J. Zhao, A. Swinnen, G. Van Assche, J. Manca, D. Vanderzande and B. V. Mele, *The Journal of Physical Chemistry B*, 2009, **113**, 1587–1591.
- 14 C. Müller, T. A. M. Ferenczi, M. Campoy-Quiles, J. M. Frost, D. D. C. Bradley, P. Smith, N. Stingelin-Stutzmann and J. Nelson, *Advanced Materials*, 2008, **20**, 3510–3515.
- 15 X. Yang, J. K. J. van Duren, M. T. Rispens, J. C. Hummelen, R. A. J.

- Janssen, M. A. J. Michels and J. Loos, *Advanced Materials*, 2004, **16**, 802–806.
- 16 J. Nelson, J. J. Kwiatkowski, J. Kirkpatrick and J. M. Frost, *Accounts of Chemical Research*, 2009, **42**, 1768–1778.
- 17 M. Schrader, R. Fitzner, M. Hein, C. Elschner, B. Baumeier, K. Leo, M. Riede, P. Bäuerle and D. Andrienko, *Journal of the American Chemical Society*, 2012, **134**, 6052–6056.
- 18 S. Yin, L. Li, Y. Yang and J. R. Reimers, *The Journal of Physical Chemistry C*, 2012, **116**, 14826–14836.
- 19 F. Frigerio, M. Casalegno, C. Carbonera, T. Nicolini, S. V. Meille, and G. Raos, *Journal of Materials Chemistry*, 2012, **22**, 5434–5443.
- 20 M. T. Rispens, A. Meetsma, R. Rittberger, C. J. Brabec, N. S. Sariciftci and J. C. Hummelen, *Chemical Communications*, 2003, 2116–2118.
- 21 N. R. Tummala, S. Mehraeen, Y.-T. Fu, C. Risko and J.-L. Brédas, *Advanced Functional Materials*, 2013, n/a–n/a.
- 22 M. Casalegno, S. Zanardi, F. Frigerio, R. Po, C. Carbonera, G. Marra, T. Nicolini, G. Raos and S. V. Meille, *Chemical Communications*, 2013, **49**, 4525–4527.
- 23 G. Paterno, A. J. Warren, J. Spencer, G. Evans, V. G. Sakai, J. Blumberger and F. Cacialli, *J. Mater. Chem. C*, 2013, **1**, 5619–5623.
- 24 J. H. Choi, T. Honda, S. Seki and S. Fukuzumi, *Chemical Communications*, 2011, **47**, 11213–5.
- 25 T. Nicolini and S. V. Meille, Manuscript in preparation.
- 26 R. C. I. Mackenzie, J. M. Frost and J. Nelson, *The Journal of chemical physics*, 2010, **132**, 064904.
- 27 D. L. Cheung and A. Troisi, *The Journal of Physical Chemistry C*, 2010, **114**, 20479–20488.
- 28 F. Gajdos, H. Oberhofer, M. Dupuis and J. Blumberger, *The Journal of Physical Chemistry Letters*, 2013, **4**, 1012–1017.
- 29 J. Idé and G. Raos, *ChargeTransport: Charge Transfer Rates and Charge Carrier Mobilities*, 2014.
- 30 H. Oberhofer and J. Blumberger, *Physical Chemistry Chemical Physics*, 2012, **14**, 13846–13852.
- 31 A. B. Bortz, M. H. Kalos and J. L. Lebowitz, *Journal of Computational Physics*, 1975, **17**, 10–18.
- 32 R Core Team, *R: A Language and Environment for Statistical Computing*, R Foundation for Statistical Computing, Vienna, Austria, 2012.
- 33 B. Baumeier, J. Kirkpatrick and D. Andrienko, *Physical Chemistry Chemical Physics*, 2010, **12**, 11103–11113.
- 34 E. F. Valeev, V. Coropceanu, D. A. da Silva Filho, S. Salman, and J.-L. Brédas, *Journal of the American Chemical Society*, 2006, **128**, 9882–9886.
- 35 F. Neese, *WIREs Computational Molecular Science*, 2012, **2**, 73–78.
- 36 N. M. O’Boyle, A. L. Tenderholt and K. M. Langner, *Journal of Computational Chemistry*, 2008, **29**, 839–845.
- 37 P.-O. Lowdin, *Journal of Chemical Physics*, 1950, **18**, 365–375.
- 38 A. Kubas, F. Hoffmann, A. Heck, H. Oberhofer, M. Elstner and J. Blumberger, *The Journal of chemical physics*, 2014, **140**, 104105.
- 39 E. F. Valeev, V. Coropceanu, D. A. da Silva Filho, S. Salman and J.-L. Brédas, *Journal of the American Chemical Society*, 2006, **128**, 9882–9886.
- 40 G. D’Avino, S. Mothy, L. Muccioli, C. Zannoni, L. Wang, J. Cornil, D. Beljonne and F. Castet, *The Journal of Physical Chemistry C*, 2013, **117**, 12981–12990.
- 41 J. Idé, R. Méreau, L. Ducasse, F. Castet, H. Bock, Y. Olivier, J. Cornil, D. Beljonne, G. D’Avino, O. M. Roscioni, L. Muccioli and C. Zannoni, *Journal of the American Chemical Society*, 2014, **136**, 2911–2920.
- 42 J. E. Norton and J. L. Brédas, *J. Am. Chem. Soc.*, 2008, **130**, 12377–12384.
- 43 D. P. McMahon and A. Troisi, *J. Phys. Chem. Lett.*, 2010, **1**, 941–946.
- 44 V. Rühle, A. Lukyanov, F. May, M. Schrader, T. Vehoff, J. Kirkpatrick, B. Baumeier and D. Andrienko, *Journal of Chemical Theory and Compu-*

- tation, 2011, **7**, 3335–3345.
- 45 M. Malagoli, V. Coropceanu, D. A. da Silva Filho and J.-L. Brédas, *Journal of Chemical Physics*, 2004, **120**, 7490–7496.
- 46 F. Negri and G. Orlandi, *Journal of Chemical Physics*, 1995, **103**, 2412–2419.
- 47 D. Fazzi, C. Castiglioni and F. Negri, *Phys. Chem. Chem. Phys.*, 2010, **12**, 10–1609.
- 48 M. J. Frisch, G. W. Trucks, H. B. Schlegel, G. E. Scuseria, M. A. Robb, J. R. Cheeseman, G. Scalmani, V. Barone, B. Mennucci, G. A. Petersson, H. Nakatsuji, M. Caricato, X. Li, H. P. Hratchian, A. F. Izmaylov, J. Bloino, G. Zheng, J. L. Sonnenberg, M. Hada, M. Ehara, K. Toyota, R. Fukuda, J. Hasegawa, M. Ishida, T. Nakajima, Y. Honda, O. Kitao, H. Nakai, T. Vreven, J. A. Montgomery, Jr., J. E. Peralta, F. Ogliaro, M. Bearpark, J. J. Heyd, E. Brothers, K. N. Kudin, V. N. Staroverov, R. Kobayashi, J. Normand, K. Raghavachari, A. Rendell, J. C. Burant, S. S. Iyengar, J. Tomasi, M. Cossi, N. Rega, J. M. Millam, M. Klene, J. E. Knox, J. B. Cross, V. Bakken, C. Adamo, J. Jaramillo, R. Gomperts, R. E. Stratmann, O. Yazyev, A. J. Austin, R. Cammi, C. Pomelli, J. W. Ochterski, R. L. Martin, K. Morokuma, V. G. Zakrzewski, G. A. Voth, P. Salvador, J. J. Dannenberg, S. Dapprich, A. D. Daniels, O. Farkas, J. B. Foresman, J. V. Ortiz, J. Cioslowski and D. J. Fox.
- 49 J. J. Kwiatkowski, J. M. Frost and J. Nelson, *Nano Letters*, 2009, **9**, 1085–1090.
- 50 T. Wei, *corrplot: Visualization of a correlation matrix*, 2013.
- 51 J. Idé, *Rpdb: Read, write, visualize and manipulate PDB files*, 2014.
- 52 D. Adler, D. Murdoch and others, *rgl: 3D visualization device system (OpenGL)*, 2013.
- 53 S. Stafstrom, *Chem. Soc. Rev.*, 2010, **39**, 2484–2499.
- 54 A. Troisi, *Chem. Soc. Rev.*, 2011, **40**, 2347–2358.
- 55 G. Raos, M. Casalegno and J. Idé, *Journal of Chemical Theory and Computation*, 2014, **10**, 364–372.