

Soft Matter

Accepted Manuscript



This is an *Accepted Manuscript*, which has been through the Royal Society of Chemistry peer review process and has been accepted for publication.

Accepted Manuscripts are published online shortly after acceptance, before technical editing, formatting and proof reading. Using this free service, authors can make their results available to the community, in citable form, before we publish the edited article. We will replace this *Accepted Manuscript* with the edited and formatted *Advance Article* as soon as it is available.

You can find more information about *Accepted Manuscripts* in the [Information for Authors](#).

Please note that technical editing may introduce minor changes to the text and/or graphics, which may alter content. The journal's standard [Terms & Conditions](#) and the [Ethical guidelines](#) still apply. In no event shall the Royal Society of Chemistry be held responsible for any errors or omissions in this *Accepted Manuscript* or any consequences arising from the use of any information it contains.

ARTICLE

Microgel-like aggregates of isotactic and atactic poly(methacrylic acid) chains in aqueous alkali chloride solutions as evidenced by light scattering

Cite this: DOI: 10.1039/x0xx00000x

Simona Sitar,^a Vladimir Aseyev^b and Ksenija Kogej*^a

A comparative light scattering study of isotactic and atactic poly(methacrylic acid), iPMA and aPMA, respectively, in aqueous solutions with added alkali chlorides, XCl (X = Li, Na, Cs), at 25 °C and XCl concentration of 0.1 mol/L demonstrates that both PMA isomers are strongly associated at low degrees of neutralization, α_N ($= 0$ for aPMA and 0.25 for iPMA), in the presence of all XCl. The shape parameter ρ and the scattering functions suggest that aggregates have characteristics of microgel particles with a dense core surrounded by a less dense shell. The extent of aggregation depends on the stereoregular structure of the polymer and on the type of the added cation. Li^+ and Na^+ ions better support aggregation than do Cs^+ ones. Besides, iPMA chains are stronger aggregated than aPMA ones and form particles with a denser core. A model of the aggregation process is suggested for iPMA. At high α_N , a slow diffusive process (so called extraordinary or anomalous mode in diffusion of polyelectrolytes) arising from electrostatic interactions between charged chains is observed for both PMAs. Results suggest that under the same experimental conditions iPMA is effectively more charged than aPMA. The role of ions in the slow mode phenomenon is less pronounced than in aggregation.

Received 00th January 2012,
Accepted 00th January 2012

DOI: 10.1039/x0xx00000x

www.rsc.org/

Introduction

Polyelectrolytes often self-organize into large scale structures by electrostatic and other forces that can be directed by various parameters, *e.g.* by polyion charge, the presence of other charged species in solution (from small and more mobile ions to surfactant ions and colloids), temperature, solvent, etc. The ability to control intermolecular association between polyelectrolyte chains is of great importance in nature and in various applications. A recent themed issue of Soft Matter on polyelectrolytes in biology and soft matter¹ discusses the current state of the art in this field from various aspects. Although natural polyelectrolytes (DNA and RNA) are in the focus of research in the last years, synthetic polyelectrolytes with simpler structures still help to identify mechanisms on the molecular level and aid in understanding complex phenomena.

Among synthetic polyelectrolytes, the weak ones, like poly(methacrylic acid), PMA,² are good candidates to study aggregation/association phenomena due to the fact that their charge can easily be varied by changing the pH of the medium. Furthermore, mere variation of the stereochemical structure of the polymer chain may have a strong effect on intermolecular interactions, aggregation, and on solution properties in general.³

PMA is one of the simplest synthetic polymers for which solution and aggregation behaviors depend significantly on the chain tacticity.^{2,4-7} It has been demonstrated, for example, that the pH induced conformational transition is reversible for so-called conventional or atactic PMA, aPMA,^{2,8} but irreversible for the structurally highly ordered isotactic PMA, iPMA.^{4,8} The underlying molecular reasons for such behavior are far from being satisfactorily explained.

In the past, research interest in PMA was mostly related to the fact that the PMA chain adopts a compact conformation at low pH (low degrees of neutralization, α_N) and undergoes a conformational transition upon increasing pH (*i.e.* α_N), which takes place on the intramolecular level. Less attention, however, was devoted to the ability of PMA to form intermolecular aggregates in aqueous solutions at low α_N , even though Eliassaf *et al.*^{9,10} demonstrated already in the 1960s that the unneutralized aPMA ($\alpha_N = 0$) is capable of forming gel networks in concentrated aqueous solutions. Gel formation was induced either by heating⁹ or by shearing¹⁰ of solutions. The interpretation of the shear induced association was that physical cross-links between the aPMA chains are more likely to be formed in flow than in a system at rest, as demonstrated both in concentrated¹⁰ and later also in more dilute conditions.¹¹⁻¹³ On

the other hand, the structurally more ordered iPMA has received considerably less attention, although it exhibits some very obvious differences in comparison with aPMA. In addition to the above mentioned irreversible conformational transition, iPMA is insoluble in water when $\alpha_N < \sim 0.2$ ^{5,6,14} and exhibits a high tendency to form aggregates in aqueous solutions.^{6,7,13} Van den Bosch et al.⁶ have demonstrated that a 10 w/w% iPMA solution with $\alpha_N = 0.28$ very rapidly forms an elastic gel when cooled below 0 °C, whereas an opposite behavior was reported for aPMA:⁹ a sample of aPMA ($\alpha_N = 0$) with a rather high molar mass formed a gel network in concentrated solution when heated above 47 °C. Pronounced intermolecular association was revealed also by studies in very dilute iPMA solutions.⁷

It is well-known that properties of polyelectrolytes depend also on the nature of ions that are present in solution. The effect of ions on properties of proteins was recognized more than 100 years ago by Hofmeister^{15,16} who ranked ions in a specific series (the Hofmeister series) according to their ability to induce precipitation of proteins from water. Collins¹⁷⁻¹⁹ proposed a simple law of matching water affinities, LMWA, which relates these phenomena to the tendency of oppositely charged ions (groups) to form so-called contact ion-pairs. These are formed if the affinity of oppositely charged ions for water, manifested through the ion's hydration enthalpy, is similar.^{17,19-22} When it comes to polyelectrolytes, the interaction of simple ions with charged macromolecular surfaces has to be considered. Thus, in relation to PMA, Strauss²³ showed that volume changes accompanying interactions of PMA with alkali metal ions depend on the ion's hydration radius. In line with the later proposed LMWA, this was attributed to the competition between hydrating water molecules and the PMA's carboxylate groups for a given cation. However, the ion-specific effects were until now not investigated systematically with PMA, in particular not in relation to chain tacticity. Since the carboxylate functional group is widespread in biology and in colloid chemistry, PMA may serve as a study example of the effect of ions on the stability and structure in solutions of such macromolecules.

In this contribution, we investigate the effect of alkali metal ions on aggregation/association phenomena in aqueous PMA solutions. We present static, SLS, and dynamic light scattering, DLS, study of both PMA isomers, isotactic and atactic, in dilute aqueous solutions at 25 °C and at increasing α_N in the presence of LiCl, NaCl, and CsCl. The main objectives of the study are to identify the nature of the aggregates between PMA chains and the function of alkali metal cations in aggregation (the low α_N case) and additionally to reveal their role in intermolecular interactions at increasing polyion charge (the higher α_N cases). In order to achieve the first objective we determine the hydrodynamic radius, R_h , and when possible the radius of gyration, R_g , of particles in solution and therefrom their shape parameter, ρ ($= R_g/R_h$). To realize the second goal, light scattering, LS, studies are extended to higher α_N values (up to $\alpha_N = 1$) where electrostatic repulsion between polyions prevents aggregate formation, but leads to so-called anomalous diffusion

of polyions (a diffusive mode in DLS). This phenomenon is described by various terms in the literature, as an extraordinary mode,²⁴ slow mode,^{25,26} polyelectrolyte effect,²⁷ or as multimacroion domain or cluster formation,^{25,28-31} and still presents a major challenge in investigations of polyelectrolyte behavior in solutions. The slow mode stems from electrostatic repulsion between similarly charged polyions and manifests itself as an apparent diffusion coefficient in correlation functions measured by DLS. Therefore, we will use the term *slow mode* for this feature within this manuscript. We address all these issues in relation to chain tacticity.

Experimental section

Materials

aPMA (Polymer Source, Inc., sample no. P14096-MAA, with weight and number average molar masses $M_w = 189000$ g/mol and $M_n = 165000$ g/mol, respectively) and iPMA ($M_w = 32000$ g/mol, $M_n = 11000$ g/mol) were the ones used previously.¹³ The stereoregular composition of both PMAs was determined from the NMR spectrum of the methylated forms of polyacids. The aPMA sample is rich in syndiotactic triads and the iPMA one contains around 93 % of isotactic triads. Stereoregular compositions of both PMAs are reported in Table S1 (Electronic Supplementary Information, ESI).

LiCl, NaCl and CsCl (all from Merck KGaA) were used to prepare aqueous 0.1 M XCl solutions. Solid LiOH monohydrate (Fluka, Biochemica), aqueous NaOH (Fixanal, Merck KGaA) and aqueous CsOH (Riedel-de Haen) were used to prepare LiOH, NaOH and CsOH solutions, respectively. The concentration of all hydroxide solutions was determined by neutralization potentiometric titration using a standardized HCl solution.

Preparation of solutions

aPMA is soluble in water at any α_N , whereas iPMA is insoluble unless ≈ 20 % of COOH groups are ionized. The critical value of α_N , denoted as $\alpha_{N,crit}$, at which iPMA dissolves in water at 25°C is $\alpha_{N,crit} \approx 0.2$.^{5,6,14} Different procedures were therefore used to prepare aPMA and iPMA solutions with various α_N values as reported previously¹³ and described in detail in ESI. For setting the α_N of PMAs, the XOH solution with the same cation as in 0.1 M XCl (X) was used.

Methods

Light Scattering. LS experiments were conducted using the 3D cross-correlation spectrometer from LS Instruments GmbH (Fribourg, Switzerland), which is based on the 3D technology specially designed to filter out multiple scattering from the total scattering.³² For this purpose, two coherent incident light beams are generated with a 20 mV He-Ne laser (Uniphase JDL 1145P, operating at 632.8 nm), are focused into the same volume in the sample, and the intensity of two scattered beams is measured simultaneously. The instrument is equipped with a laser attenuation system combined with an online incident laser

intensity detector that allows for the normalization of the LS intensity (see also ESI).

LS measurements were performed in cylindrical quartz cells. Solutions were gently filtered directly into the measuring cell through hydrophilic Millex-HV filters with a pore size of 0.22 μm and diameter of 13 mm. The initial few μL of the filtered solution were discarded. No significant loss of the polymer was observed due to filtration, which was verified by checking the intensity of scattered light from unfiltered and filtered solutions. The samples were allowed to equilibrate for 20 min before the measurement was initiated. Intensity of scattered light was collected in the angular range from 40° to 150°. All LS studies were performed at 25°C.

Methodological aspects of DLS and SLS can be found elsewhere.^{33,34} At low α_N ($\alpha_N = 0$ and 0.25 for aPMA and iPMA, respectively), the measured correlation functions were analyzed with the program CONTIN and two well-separated peaks were obtained in the distribution of the correlation times. The calculated distributions were used to split the total scattering intensity into two contributions. The resulting dynamic modes were analyzed individually in order to obtain the corresponding diffusion coefficients (and from those the hydrodynamic radii) and the radii of gyration in case of large particles. The correlation functions for $\alpha_N \geq 0.4$ (iPMA) and $\alpha_N = 1$ (aPMA) also exhibited two dynamic modes, a fast and a slow (extraordinary) one (for more details see Results and Discussion). In iPMA solutions, the relaxation time distributions were overlapping and CONTIN analysis was difficult. The bi-exponential fit was used instead to obtain the relaxation times for both modes. No such problem was encountered with aPMA. Details on all these procedures are described in the literature^{35,36} and in the ESI accompanying this paper. Examples of data analysis are shown in Figs. S1-S3. Representative correlation functions are given in Figs. S4 a and b.

Determination of the Refractive Index Increment. A Wyatt Optilab rEX differential refractometer (operating at 632.8 nm) was used to determine the dependence of the refractive index, n , on c_p , from which the refractive index increment, dn/dc_p , was determined for aPMA and iPMA in aqueous 0.1 M XCl solutions at 25 °C. The dn/dc_p values were measured for α_N values in the range 0-1 (aPMA) and 0.25-1 (iPMA) and for c_p values in the range 0.5-4 g/L (aPMA) and 0.8-8 g/L (iPMA). The dilutions from the stock solution were performed one day before the measurements were carried out. No effort was put into the determination of the dn/dc_p values at a constant chemical potential, $(dn/dc_p)_\mu$. In the case of polyelectrolytes, the dn/dc_p and the $(dn/dc_p)_\mu$ values may differ. For example, Schweins *et al.*³⁷ have determined up to 10 % difference (depending on polymer's M_w) for sodium poly(acrylate) solutions in 0.1 M NaCl at 543.5 nm and 25 °C. However, since our dn/dc_p data were used only for the evaluation of the size parameters from the optical contrast of

the studied PMA isomers and not for the determination of their absolute M_w values, this difference was ignored.

Results

The refractive index increment

The measured dn/dc_p values are reported in Table 1 and plotted in Fig. 1 in dependence on α_N for visual appreciation. For aPMA in 0.1 M LiCl and NaCl they increase linearly with increasing α_N , whereas in 0.1 M CsCl they decrease in the range $0 < \alpha_N < 0.5$ and increase for $\alpha_N \geq 0.5$. The highest dn/dc_p ($= 0.193 \text{ mL/g}$) at $\alpha_N = 0$ is detected in 0.1 M CsCl. For $\alpha_N > 0.2$, the ranking of dn/dc_p values according to the counterion present in aPMA solutions is $\text{Na}^+ > \text{Li}^+ > \text{Cs}^+$.

The α_N dependence of the dn/dc_p values for iPMA in 0.1 M CsCl is very similar to the one found for aPMA in 0.1 M CsCl, with a minimum at $\alpha_N \approx 0.5$, and almost constant values for α_N larger than that. In 0.1 M NaCl and LiCl, however, it is clearly different: in contrast to the linear increase in the whole α_N region in the aPMA case, the dn/dc_p values for iPMA are more or less constant ($dn/dc_p \approx 0.22$ in 0.1 M NaCl and $dn/dc_p \approx 0.24$ in 0.1 M LiCl for $\alpha_N \leq 0.6$) and clearly increase only in 0.1 M LiCl for $\alpha_N \geq 0.6$. Note also that the ranking of ions is different in comparison with aPMA: the largest dn/dc_p values in the whole α_N range are measured in 0.1 M LiCl, leading to the sequence $\text{Li}^+ > \text{Na}^+ > \text{Cs}^+$ for iPMA solutions.

The literature data on α_N dependence of dn/dc_p in aqueous PMA solutions are scarce and reported only for aPMA, sometimes called conventional PMA. Heitz *et al.*³⁸ report a linear dependence in 0.05 M NaCl and at a lower wavelength (488 nm). The dn/dc_p value for the acid form in that work applies to water without added NaCl. This dependence is given by a dashed red line in Fig. 1b. In our case, the line is shifted to lower values, which is expected due to a longer wavelength (633 nm) of light used in our measurements.³⁹ To our knowledge, no literature data on dn/dc_p are available for iPMA.

In spite of the fact that the parameter dn/dc_p does not affect the determination of R_h and R_g , it gives important information on the optical contrast of the studied PMA isomers in aqueous solutions of alkali chlorides. Obviously, the optical contrast depends strongly on the stereoregular structure of PMA and on the type of the added cation. As discussed by Schweins *et al.*,³⁷ one may picture polyelectrolyte-simple salt solutions as two phase systems, *i.e.* domains of polyelectrolyte chains with an ion-atmosphere of counterions and coions and the polyion-free part of the solution, which contains only the simple (small) ions. The concentration of simple ions is not the same in these domains, which is known as the Donnan effect. Large differences in dn/dc_p dependence on α_N (*i.e.* on optical contrast between the polyion domains and the salt containing solvent) could be explained either by significantly different single chain conformations, and consequently different distribution of counterions, or by the presence of other species,

Table 1 The refractive index increment, dn/dc_p (in mL/g), in aqueous iPMA and aPMA solutions at 25 °C as a function of the degree of neutralization, α_N . The concentration of added XCl ($X = \text{Na}, \text{Li}, \text{Cs}$) is $c_s = 0.1 \text{ M}$ and the wave length is 633 nm.

iPMA						aPMA			
LiCl		NaCl		CsCl		LiCl	NaCl	CsCl	
α_N	dn/dc_p	α_N	dn/dc_p	α_N	dn/dc_p	α_N	dn/dc_p		
/		/		/		0	0.148	0.158	0.193
0.25	0.246	0.25	0.223	0.27	0.194	0.25	0.162	0.173	0.129
0.35	0.256	0.34	0.208	0.36	0.183	/			
0.45	0.246	/		0.45	0.162	/			
0.5	0.240	0.48	0.224	/		0.5	0.183	0.197	0.113
0.57	0.239	0.58	0.213	0.58	0.135	/			
0.6	0.240	/		/		/			
0.75	0.265	0.75	0.219	0.75	0.147	0.75	0.201	0.214	0.137
1.0	0.288	1	0.229	1	0.139	1.0	0.226	0.246	0.156

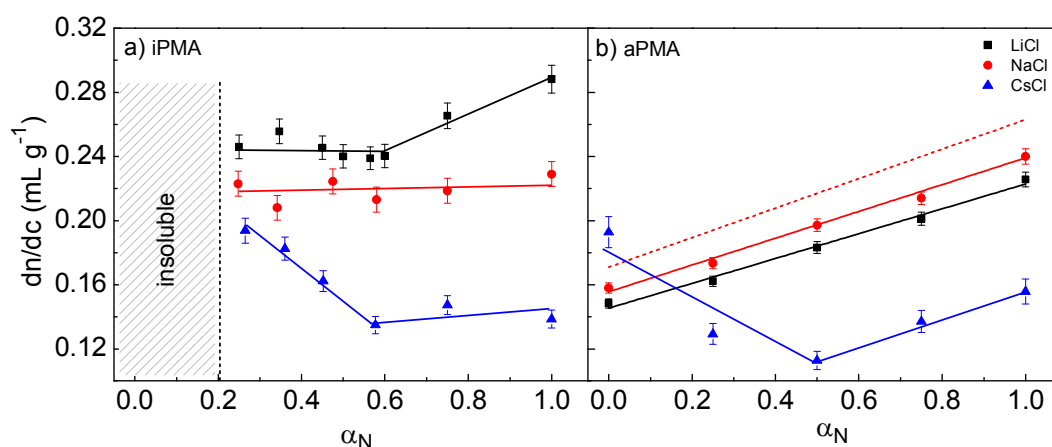


Fig. 1 The dependence of dn/dc_p on degree of neutralization, α_N , in aqueous iPMA (a) and aPMA solutions (b) in the presence of 0.1 M LiCl (black squares), NaCl (red circles), and CsCl (blue triangles) at 633 nm. The dashed red line in Fig. 1b is based on the equation for the dn/dc_p dependence on α_N of aPMA solutions in 0.05 M NaCl at 488 nm as reported in ref. 36. The solid lines are merely guidance for eyes.

e.g. aggregates, in solution. In relation to counterion distribution, it has been shown that binding of Na^+ ions is somewhat stronger by iPMA,⁷ but this difference vanishes with decreasing α_N . We therefore propose that the most important contribution to the optical contrast in PMA solutions, in particular at low α_N values, is provided by the interchain aggregates. Qualitatively, dn/dc_p data suggest that the state of hydrated iPMA chains is different from that of hydrated aPMA ones. This will become evident also from LS results discussed in the following.

Concentration dependence

The size of single polymer chains in solution generally depends on the polymer concentration. Consequently, we start with a discussion of the effect of c_p on the measured D . We first discuss the low α_N ($= 0$ for aPMA and 0.25 for iPMA)

conditions, where multi-molecular aggregates are present in solution in equilibrium with individual coils. Afterwards, the case of $\alpha_N = 1$ is investigated, where intermolecular association is absent, but so called polyelectrolyte mode sets in (for details on the discrimination between aggregation and slow mode see discussion in the following section). The polymer concentration range for studies of concentration dependency was 1-3 g/L, which is below the overlap concentration, c_p^* , in all cases (as estimated by DLS, the smallest c_p^* in our studies was ≈ 40 g/L). These studies were conducted only in 0.1 M NaCl.

Low α_N . The diffusion coefficients of individual chains, D_1 , at $\alpha_N = 0$ (aPMA) and 0.25 (iPMA) were independent of c_p (Fig. 2a; the data in 0.1 M LiCl and CsCl at $c_p = 2\text{g/L}$ are added for comparison), implying that the value of the second virial coefficient, A_2 , for both PMAs in 0.1 M NaCl at 25 °C is close to 0. This is in agreement with the literature data for aPMA in

aqueous NaCl.^{12,38,40} Consequently, $R_{h,1}$ values measured at finite concentrations are close to those extrapolated to $c_p = 0$ and may be mutually compared. $R_{h,1}$ of aPMA ($\alpha_N = 0$) was from 11 to 13 nm and that of iPMA ($\alpha_N = 0.25$) was somewhat smaller, from 8 to 10 nm, irrespective of the nature of the cation.

The small $R_{h,1}$ values of individual chains are expected, knowing that PMA chains adopt a coiled conformation for $\alpha_N < \sim 0.3$. The size of an ideal coil of a polymer chain with the same degree of polymerization as aPMA ($DP \approx 2200$) or iPMA ($DP \approx 370$) would have to be around 10 and 4 nm, respectively, which suggests that the determined size of iPMA is too large. Likely reasons for this are more chain rigidity of the stereoregular iPMA and its non-zero α_N value.

In contrast to $R_{h,1}$, c_p has a significant effect on the hydrodynamic radius of the aggregates, $R_{h,2}$. As expected, the extent of aggregation, so as the size of the aggregates, increases with increasing c_p from 90 to 122 nm (250 to 340 nm) at $c_p = 1.5$ and 2.5 g/L for iPMA and aPMA, respectively. However, the shape parameter $\rho (= R_{g,2}/R_{h,2})$, which will be discussed in detail below, is independent of c_p ($\rho \approx 0.60$ and 0.73 for iPMA and aPMA, respectively), showing that the aggregates remain self-similar. On the basis of this we propose that the interpretation of aggregation phenomena in dilute PMA solutions at low α_N is not affected by the polymer concentration as long as solutions are sufficiently dilute (well below c_p^*).

High α_N . At higher α_N , however, charge interactions between polyions strongly affect their dynamic behaviour in solution. In addition to the fast diffusion, a considerably slower diffusive process (in the Introduction highlighted as the *slow mode*) appears due to the electrostatic repulsion between polyions. It has been shown by Förster *et al.*^{27,28} that the prime

parameter in the appearance of the slow mode is the ratio of the polyion-charge, c_{pc} , to the added salt concentration, c_s , denoted by the authors as parameter $\lambda (= c_{pc}/c_s)$, and not the absolute polymer or salt concentrations. Three regimes were identified in polyelectrolyte solutions in relation to the value of λ : (i) a “dilute lattice” regime ($\lambda \ll 1$; excess of salt) with a single diffusion coefficient related to coupled diffusion of individual polyions and bound counterions, (ii) a transition regime ($\lambda \approx 1$), where the slow mode gradually appears, and (iii) a “semidilute lattice” regime ($\lambda \gg 1$; excess of polyion charges), where electrostatic forces between polyions lead to formation of a transient network (sometimes called multimacroion domains³⁰), which is detected in LS measurements as this slow mode.

In our study, c_s was constant ($c_s = 0.1$ M) and λ was varied via α_N , which affects c_{pc} ($c_{pc} = \alpha_N c_p$). The maximum value of λ was 0.235 for fully ionized polyions ($\alpha_N = 1$), meaning that the conditions in PMA solutions correspond to the transient or possibly the “dilute lattice” regime. The D_1 values for $\alpha_N = 1$ in 0.1 M NaCl are plotted in dependence on c_p in Fig. 2b and are comparable in magnitude to those of weakly charged PMA chains at $c_s = 0.1$ M (compare Fig. 2a and 2b). However, in contrast to the low α_N conditions, D_1 values increase with increasing c_p , pointing to a positive value of A_2 for both PMAs at $\alpha_N = 1$, which is expected for fully charged polyions dissolved in an aqueous medium. The calculated $R_{h,1}$ values of aPMA (iPMA) chains decrease from around 18 (12) nm at $c_p = 1$ g/L to around 11 (7) nm at $c_p = 3$ g/L.

Further experiments were performed at a constant polymer concentration of $c_p = 2$ g/L. As it will become evident below, the slow diffusion process (slow mode) in PMA solutions in this polyion concentration regime depends primarily on the polyion charge, its tacticity and the type of the added cation.

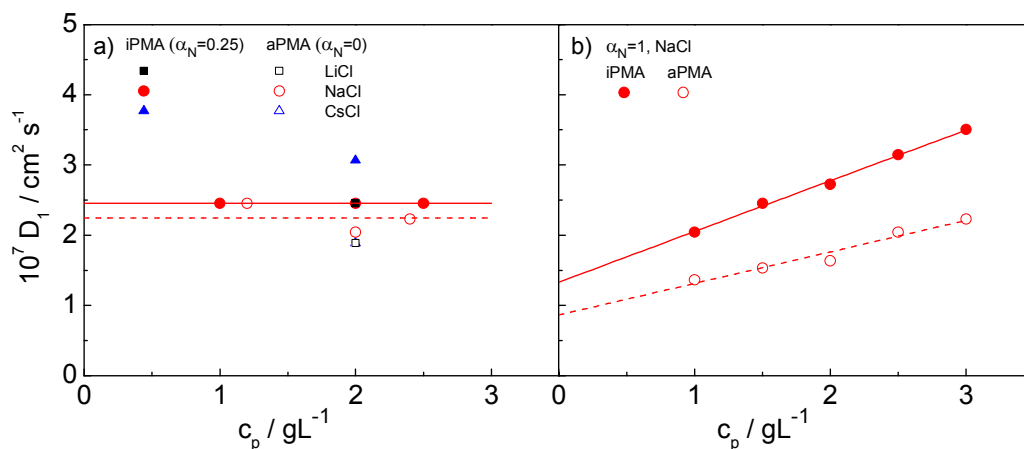


Fig. 2 The dependence of the diffusion coefficient of individual chains, D_1 , on polymer concentration, c_p , in 0.1 M NaCl: (a) iPMA at $\alpha_N = 0.25$ and aPMA at $\alpha_N = 0$ (for comparison, values in 0.1 M LiCl and CsCl at $c_p = 2$ g/L are also shown) and (b) both PMAs at $\alpha_N = 1$ in 0.1 M NaCl. Lines in Fig. 2a only apply to the data in 0.1 M NaCl.

Aggregation at $\alpha_N = 0$ (aPMA) and 0.25 (iPMA) and the nature of aggregates

The presence of aggregates in both, iPMA and aPMA solutions, at low α_N is clearly manifested in the plot of the LS intensity in absolute units, $\Delta R_{\theta=0}$ ($= (R - R_0)_{\theta=0}$, where R is the Rayleigh ratio of the solution and R_0 that of the solvent and index “ $\theta=0$ ” denotes extrapolation to zero angle), as a function of α_N shown in Fig. 3. The $\Delta R_{\theta=0}$ values are plotted as relative values, *i.e.* they are divided by $(\Delta R_{\theta=0})^{\alpha_N=1}$, a value obtained at $\alpha_N = 1$. The calculated relaxation time, τ , distribution functions are shown in Fig. 4.

Clearly, the total LS intensity is very high at $\alpha_N = 0$ for aPMA and at $\alpha_N = 0.25$ for iPMA and drops by 1-2 orders of magnitude at higher α_N . The calculated distributions at the lowest α_N are bimodal in both cases. The fast relaxation time, resulting in a smaller size, $R_{h,1}$, is associated with individual chains, whereas the slow relaxation process, resulting in a bigger size, $R_{h,2}$, is attributed to multi-chain aggregates. The evidence that the slow relaxation process is due to aggregates is given by the high LS intensity at these α_N conditions. Data in Fig. 3 demonstrate that the intensity drops sharply with increasing α_N . Thus, the ratio $\Delta R_{\theta=0}/(\Delta R_{\theta=0})^{\alpha_N=1}$ is close to 1 already at $\alpha_N = 0.1$ (0.3) for aPMA (iPMA), suggesting the

disintegration of the aggregates in a very narrow region of α_N values (the same conclusions are obtained also by considering separately the contribution of the aggregates to the total LS

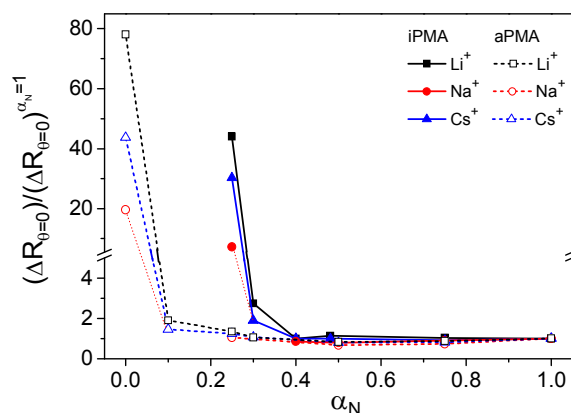


Fig. 3 The total LS intensity, $(\Delta R_{\theta=0}) / (\Delta R_{\theta=0})^{\alpha_N=1}$, plotted versus α_N in aqueous iPMA and aPMA solutions: 0.1 M LiCl (black squares), NaCl (red circles) and CsCl (blue triangles); $c_p = 0.023$ M. The solubility limit of iPMA is at $\alpha_N \approx 0.2$.

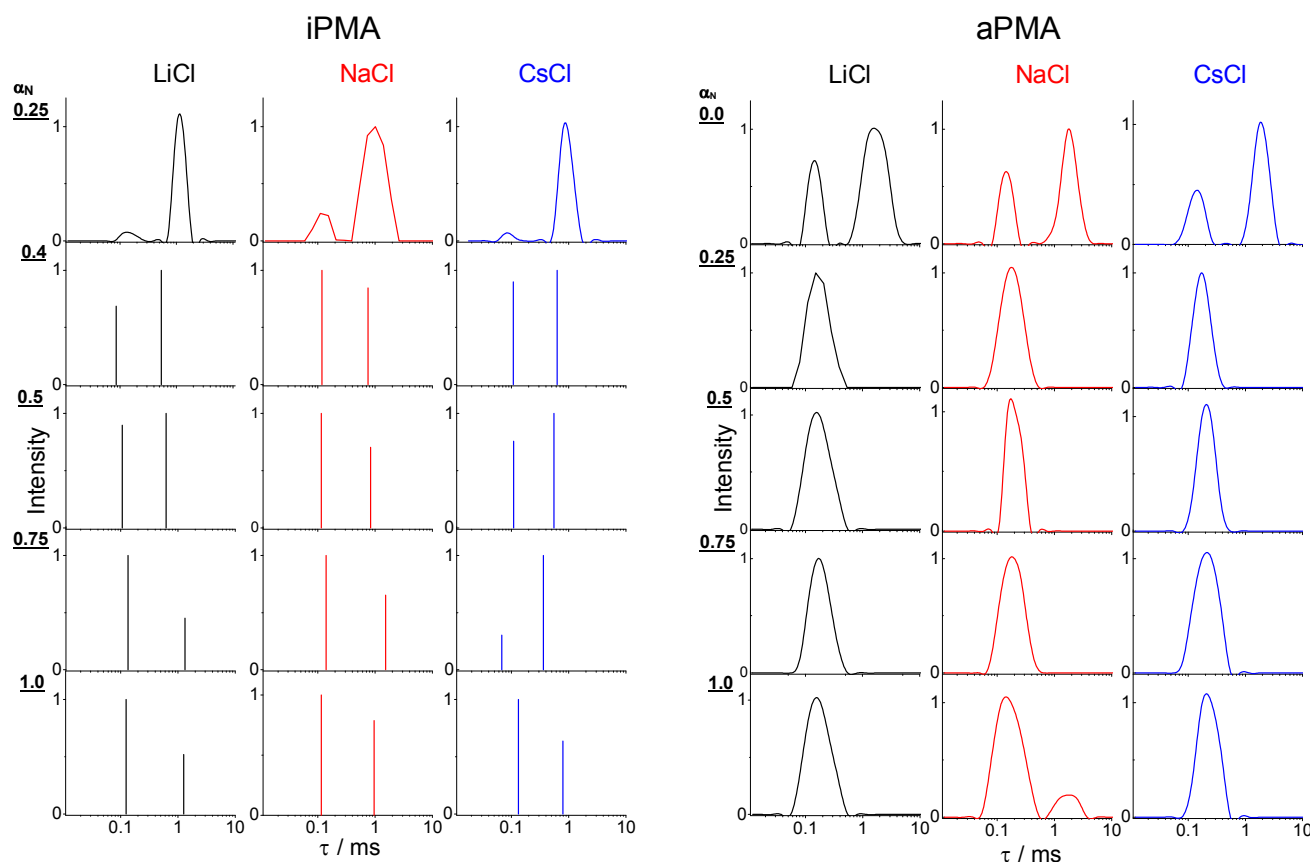


Fig. 4 The relaxation time, τ , distribution functions obtained at $\theta = 90^\circ$ for aqueous aPMA and iPMA solutions of various α_N values in 0.1 M LiCl (black), 0.1 M NaCl (red) and 0.1 M CsCl (blue). Note that the distributions for all iPMA solutions with $\alpha_N \geq 0.4$ were estimated using a biexponential fit (Origin 8.0 Software), whereas the others were obtained using the CONTIN program (see ESI).

intensity). We conclude that the aggregation ceases abruptly with increasing α_N with both PMAs.

The $R_{h,2}$ values of aggregates were obtained from the measured diffusion coefficients extrapolated to zero angle (see Fig. S5a) and are reported in Table 2. They clearly depend on the type of the cation. $R_{h,2}$ ranges from 90 to 115 nm for iPMA and from 230 to 290 nm for aPMA and points to extensive aggregation between chains. In view of the fact that aggregates are large in size in comparison to the wavelength of light, the radius of gyration, $R_{g,2}$, could be determined from the angular dependence of LS intensity (see Fig. S5b) and from that the shape parameter ρ ($= R_{g,2}/R_{h,2}$) was calculated. The resulting ρ values are around 0.63 for iPMA and around 0.75 for aPMA (Table 2), which is both lower than ρ for a hard sphere ($\rho = 0.78$).

Table 2 $R_{h,1}$, $R_{h,2}$, $R_{g,2}$ (all in nm), and the shape parameter ρ ($= R_{g,2}/R_{h,2}$) obtained from SLS and DLS measurements in 0.1 M XCl solutions of iPMA and aPMA ($c_p = 0.023$ M) at 25 °C: $\alpha_N \approx 0.25$ (iPMA) and $\alpha_N = 0$ (aPMA).

iPMA					aPMA					
XCl	α_N	$R_{h,1}$	$R_{h,2}$	$R_{g,2}$	ρ	α_N	$R_{h,1}$	$R_{h,2}$	$R_{g,2}$	ρ
LiCl	0.25	10±1	115±2	73±2	0.63±0.02	0	13±1	263±4	195±3	0.74±0.02
NaCl	0.25	10±1	110±2	64±2	0.58±0.02	0	12±1	292±5	221±3	0.76±0.02
CsCl	0.27	7±1	90±2	60±2	0.67±0.03	0	13±1	231±4	173±3	0.75±0.02

In view of these small ρ values, we tried to classify the aggregate structure by comparing the scattering data with theoretically predicted scattering functions for some typical particle topologies.³⁹ For this purpose, the angular dependence of scattered light was followed and intensities were split into contributions of small and large particles as demonstrated in ESI. The data for the large particles (aggregates) are presented in Fig. 5 in the form of a Kratky plot (*i.e.* the dependence of $(qR_g)^2 P(q)$ on qR_g). The experimental points are compared with six selected particle topologies, ranging from rigid rod to hard sphere. It can be seen that the majority of data points for iPMA remain in the range of low q -values (corresponding to $qR_g < 1.5$) where most of the topologies (except spherical) fit. The aggregates of aPMA are sufficiently big to exceed this limit. Thus, the corresponding data extend to higher qR_g and can clearly be approximated with the Debye-Bueche scattering function (for details of these fits see also Fig. S5b). As is seen in Fig. 5, the iPMA aggregates are too small to resolve their internal structure using the Kratky plot. However, it appears that the calculated points correspond to the aPMA series.

The Debye-Bueche scattering function is reported in the literature for the description of hyperbranched flexible chain molecules and microgels from chemically cross-linked flexible chains.^{41,42} On the basis of this, and of the low ρ values, we propose that iPMA and aPMA aggregates can be characterized as microgel-like particles, *i.e.* spherical solvent-draining particles with a higher polymer density in the centre and a

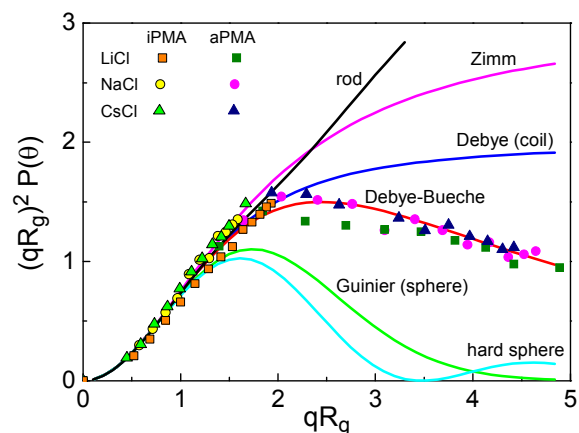


Fig. 5 The Kratky plot for six selected topologies (solid lines; for details see ref. 39) and the experimental data for iPMA (■, ●, ▲) and aPMA (■, ●, ▲) at $\alpha_N = 0.25$ and 0, respectively, in 0.1 M LiCl (squares), NaCl (circles), and CsCl (triangles). The LS data in this figure apply to the slow diffusive process, thus only representing the multi-molecular aggregates.

lower one towards the outer surface (shell). The “cross-links” connecting the PMA chains are physical rather than chemical.

According to the higher ρ value (around 0.75, irrespective of the added cation), the aggregates of aPMA chains have a more loose structure that allows easier penetration of solvent in the interior, whereas aggregates of a highly regular iPMA with a lower ρ are considerably denser with a more compact core, allowing only the outer shell to be drained by water. In addition, the dn/dc_p data indicate that the surface of the aggregates (providing the optical contrast in scattering) is also different for iPMA aggregates in comparison with the aPMA ones. This may partly come from the different extent of ion binding, but predominately it is attributed to different polarity of the aggregate surface.

The idea on different compactness and surface polarity of the iPMA aggregates becomes plausible if one takes into account that the iPMA chains adopt a partly helical conformation in solution.^{5,6,43} Such ordered conformation would promote association through a very efficient hydrogen bonding between parallel arranged helices. It was proposed by van den Bosch et al.⁶ that hydrogen bonding in iPMA solutions may be strongly cooperative. For the cooperativity to be truly effective, the distribution of dissociated and un-dissociated carboxyl groups should not be random, as usually thought. On the contrary, we propose that the un-dissociated carboxyl groups (COOH) are concentrated in the helical regions and the dissociated (COO⁻) ones in the disordered regions of the chains. In this way, it becomes reasonable to suggest that domains are formed, within which uncharged portions of iPMA chains are strongly hydrogen-bonded to neighbouring chains in a cooperative manner. Water may be largely excluded from these regions (the cores of the particles). The water exposed regions of the aggregate surface are made up of less ordered chain portions with hydrophilic COO⁻ groups and comprise the

shell around the core. The comparison of results for aPMA and iPMA imply that the affinity of charged/polar groups for water (in our case either COO^- or COOH) depends considerably on the particular distribution of other hydrophilic and hydrophobic groups in a certain chain conformation. The hydration/dehydration effects are thus crucial in aggregation between PMA chains, as discussed recently also by Burrows *et al.*⁴⁴ for another anionic polyelectrolyte, poly(vinyl sulfate), in that case with trivalent counterions. There exists only a narrow window of α_N , in which the described association in PMA solutions can be observed.

A sketch of the proposed model for aggregation of iPMA chains is presented in Fig. 6. The first step in this model is the disorder-to-order (coil-to-helix) transition and the second one is the side by side aggregation of helices. A similar cooperative mechanism was reported previously for intermolecular association between even more hydrophobic poly(ethacrylic acid) chains in water⁴⁵ and for synthetic polymers in organic solvents, *e.g.* for isotactic poly(methylmethacrylate) in 2-butanone⁴⁶ or syndiotactic poly(styrene) in bromoform.⁴⁷ The majority of the ionized carboxyl groups in this aggregate are exposed to the solvent and the hydrophobic methyl ones are mostly hidden in the hydrophobic core. Thus, the dielectric constant of the hydrophobic core is lower than that of the surrounding shell, as proven by fluorescence measurements.⁵ The charges on the iPMA chains together with their counterions only exist in the shell of the aggregates, which is therefore swollen with water due to the osmotic pressure effects.

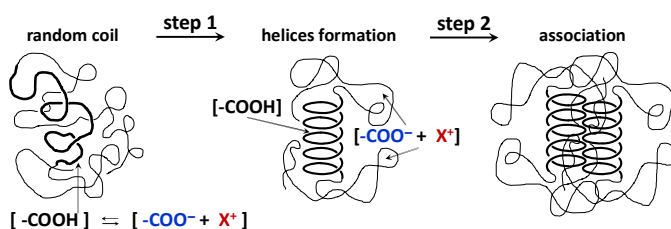


Fig. 6 A model of the association process in iPMA solutions at $\alpha_N = 0.25$.

On the other hand, aPMA chains have a random distribution of carboxyl groups along the chain and at $\alpha_N = 0$ only a very small part (a few %) is charged due to self-ionization. The COOH groups are capable of forming intermolecular hydrogen bonds, but presumably in a less cooperative manner due to aPMA's irregular structure. Consequently, the core of aPMA aggregates is less dense in comparison with iPMA ones and at the same time the surface has a considerably lower charge. Besides, it was demonstrated previously by pyrene based fluorescence measurements that the interior of the compact form of aPMA at $\alpha_N = 0$ is actually more hydrophobic than that of iPMA, because the methyl groups can be more efficiently buried in it,⁵ whereas the surface has to be more hydrophilic. This is finally demonstrated also in a different optical contrast. Responsibility for the stability of aPMA aggregates in solutions at rest comes largely from the hydrophobic effect associated with the methyl side groups, and not so much from the

hydrogen-bonding, as is with iPMA. However, we have to stress that the probably of the hydrogen bond formation between aPMA chains strongly increases in the field of flow as confirmed in several publications,^{9,11,13} which is not the case with iPMA.¹³

Generally aggregation is more favourable for neutral polymers and increases with increasing M_w . Thus, our results suggest that iPMA, which is ionized to a non-negligible degree ($\alpha_N = 0.25$) and has a 6-times lower M_w than aPMA, is much more inclined towards intermolecular association than aPMA.

Effect of ions on aggregation

The sequence of ions in relation to the size of the aggregates is $\text{Li}^+ > \text{Na}^+ > \text{Cs}^+$ for iPMA and $\text{Na}^+ > \text{Li}^+ > \text{Cs}^+$ for aPMA (see Table 2), the same as noticed previously for dn/dc_p values. These results show that Na^+ and Li^+ ions better support aggregation between iPMA and aPMA chains than do Cs^+ ones. This observation can be understood by taking into account the hydration radii of the investigated cations, which decrease with increasing the ionic radii, and by applying the LMWA¹⁷⁻¹⁹ for the interpretation of ion pair formation in the electrolyte solutions. The COO^- anion is strongly hydrated so as are Li^+ and Na^+ ions; they have high hydration enthalpies, ΔH_{hydr} . On the other hand, Cs^+ ion is only weakly hydrated, with a considerably lower ΔH_{hydr} . LMWA states that the closer is the ΔH_{hydr} of ions the stronger is the resulting ion pair. Thus, COO^- is expected to form the strongest ion pair with Na^+ ions, since their ΔH_{hydr} values are very close to each other ($\Delta H_{\text{hydr}} \approx -420$ kJ/mol), and the weakest one with Cs^+ ions.

Although PMA chains at low α_N are only weakly charged (a few COO^- groups are present due to self-ionization in the aPMA $\alpha_N = 0$ case, and around 25 % in the iPMA $\alpha_N \approx 0.25$ case), the LMWA seems to apply fairly well. Thus, Na^+ ions better support aggregation between PMA chains than do Cs^+ ones, so larger aggregates are formed in the former case. The observed sequence in the size of aPMA aggregates ($\text{Na}^+ > \text{Li}^+ > \text{Cs}^+$) is therefore in a perfect agreement with LMWA, although aPMA is virtually un-charged. Recent computer simulations by Hess *et al.*⁴⁸ performed on a neutral protein and on two (either positively or negatively) charged proteins show that the neutral protein followed the same series as did the charged ones with respect to ion specificity. The authors have concluded that this is probably due to the fact that carboxylates stick out of the protein surface and are fully hydrated. This is a reasonable explanation also for aPMA. On the level of an individual chain, it is widely accepted that aPMA at low α_N is in a rather compact coil conformation. Methyl groups are predominately buried in the core of such structure (the core is rather hydrophobic; see above) and polar COOH , and among them some charged COO^- groups coming from self-ionization, are facing the water solvent.

In the iPMA case, the largest aggregates are formed in the presence of LiCl , suggesting that Li^+ ions interact more strongly with carboxylates on the iPMA chain. Several factors may be responsible for this difference in comparison with aPMA. First, it is reasonable to expect that ΔH_{hydr} of an ion

depends to some extent also on structural features of the whole macromolecule. The particular placement of the COO^- groups on the isotactic chain could lead to a modified interaction of the aggregated isotactic polymer with water. Water molecules avoid contact with hydrophobic methyl groups and are pushed toward ionized COO^- groups with a high affinity for water. In this way, they may contribute to a somewhat higher ΔH_{hydr} of COO^- closer to that of Li^+ (for which $\Delta H_{\text{hydr}} = -531$ kJ/mol). Besides, it is known that also the Li^+ ion's position in the Hofmeister series shifts depending on the surrounding environment. This both together could bring around a different ordering in iPMA solutions in comparison with aPMA ones. An important implication of our results is that the cation specificity in PMA solutions is determined by the properties of the cation's hydration waters and by the ability to donate these water molecules to the polymer, which certainly depends on the polymer's state in solution.

It is worth noting that the value of ρ (see Table 2) shows no pronounced ion specific effects. The same holds also for the Kratky plot (Fig. 5). This implies that the nature (spatial mass distribution) of the aggregates is similar, irrespective of the added ion, only the extent of aggregation changes. The mass

distribution within the aggregates is affected primarily by the chemical and physical nature of the polyion.

The α_N dependence of the slow mode

We now turn our attention to the study of the slow mode as a function of α_N . Fig. 3 shows that the total LS intensity in the presence of all XCl's drops to a very low and constant value for $\alpha_N > 0$ (aPMA) or $\alpha_N > 0.25$ (iPMA). All time distribution functions for iPMA solutions with $\alpha_N > 0.25$ are bimodal, regardless of the counterion (Fig. 4). As for aPMA, bimodality is observed only for $\alpha_N = 1$ in the presence of 0.1 M NaCl. The fast mode, as before, is associated with the diffusion of individual chains (small particles). On the other hand, the slow mode at higher α_N does not represent particles, but owes to so-called polyelectrolyte effect, originating from electrostatic repulsions between the charged chains. The evidence for this is provided by the low LS intensity (*c.f.* Fig. 3) and by inspecting plots of the decay rate, Γ , in dependence on the square of the scattering vector q given in Fig. 7. An additional verification that we are dealing with an "anomalous" diffusion process is that points are rather scattered in the Kratky plot (not reported); it is impossible to claim that they follow any specific topology.

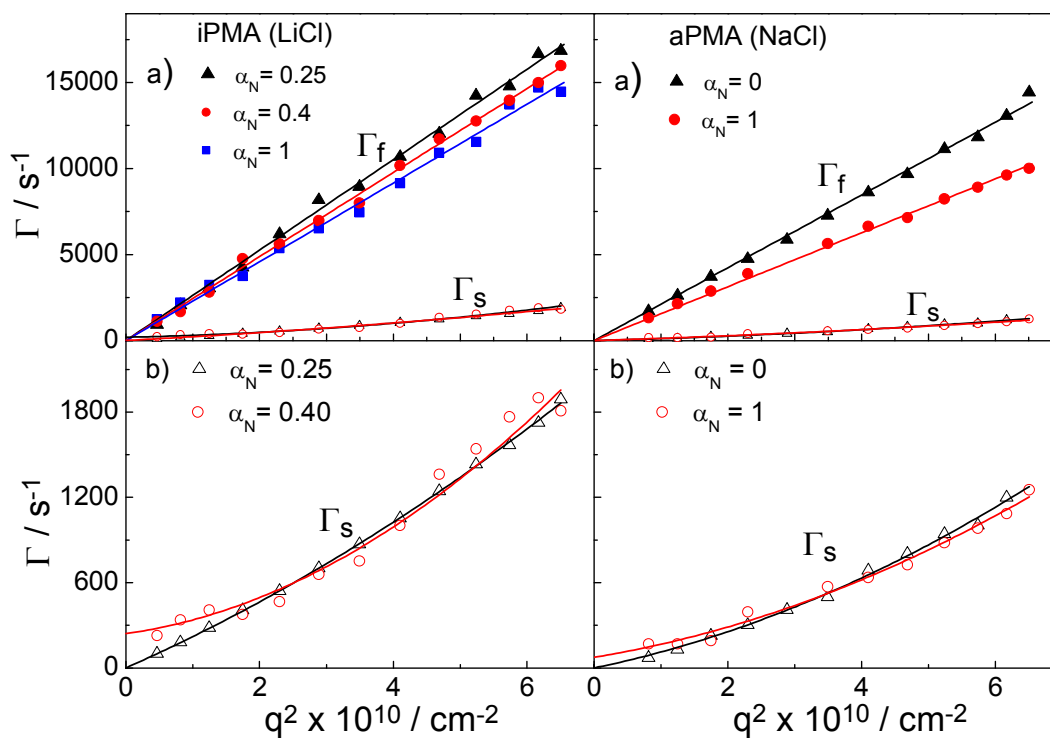


Figure 7. Decay rates, $\Gamma = \tau^{-1}$, as a function of the square of the scattering vector, q^2 , at selected α_N values for iPMA in 0.1 M LiCl and for aPMA in 0.1 M NaCl: a) fast, Γ_f (filled symbols), and slow mode, Γ_s (open symbols); b) only slow mode, Γ_s .

Curves with the high slope in Fig. 7 correspond to the fast relaxation process, characterized by the fast relaxation rate, Γ_f , and those with the low slope to a considerably slower relaxation process, characterized by the slow relaxation rate, Γ_s . In Fig. 7b, the range for Γ_s curves is enlarged. At all studied α_N and for

all XCl's, the Γ_f vs. q^2 curves were linear for both PMAs. They start from the centre of coordinates, thus representing true translational diffusion of rather monodisperse (and small) particles. Also the Γ_s vs. q^2 curves for $\alpha_N = 0$ (aPMA) or 0.25 (iPMA) start from the origin, but show positive deviations from

linearity with increasing q^2 as a consequence of polydispersity of the aggregates.

In contrast, the Γ_s curves at higher α_N do not go through the origin (c.f. lines in Fig. 7b for $\alpha_N = 0.4$ (iPMA) and 1 (aPMA) and additional curves for iPMA with $\alpha_N = 1$ in ESI, Fig. S6) and cannot be related to the translational diffusion.³⁴ They owe to the polyelectrolyte effect, often referred in the literature as the slow mode.²⁵⁻²⁸ Note that we use the notation Γ_s for both, the aggregates and the slow mode, because it signifies the slow diffusion (real or “anomalous”) characterized by a small value of D . Similar curves were reported in ref. 25 (c.f. Fig. 2 in there) for sodium poly(styrenesulfonate), NaPSS, where the slow mode was studied in detail. Our results show that the slow mode is present in the aqueous 0.1 M XCl solutions of iPMA at all $\alpha_N \geq 0.4$, whereas for aPMA it only is detected in the 0.1 M NaCl solutions at $\alpha_N = 1$. This indicates that under the investigated conditions, 0.1 M alkali chlorides do not provide efficient screening of the electrostatic forces between iPMA chains, whereas they do that for aPMA chains in all the cases except for the highest polyion charge ($\alpha_N = 1$) in 0.1 M NaCl. This difference between aPMA and iPMA agrees with the conclusions of previous investigations^{5,7} that iPMA chain has a locally higher charge density in comparison to aPMA and therefore a higher salt concentration is needed to screen electrostatic interactions efficiently. The 0.1M XCl seem to be the border case for the observance of the slow mode, at least as far as aPMA is concerned. Further investigations are in progress regarding the dependence of the slow mode in iPMA and aPMA solutions on salt concentration. One of the open issues is also the effect of ions on slow mode.

The diffusion coefficients were obtained from the initial slopes of the decay rate curves and are plotted in Fig. 8 as a function of λ . The range of λ values that can be covered by changing α_N (at constant c_p and c_s) is rather narrow ($0.01 < \lambda < 0.24$). In this λ -range, the D_f of the iPMA solutions so as of the aPMA ones (for $\lambda > 0.05$ or $\alpha_N > 0.2$) is more or less independent of α_N in all 0.1 M XCl. Somewhat higher values are obtained only for aPMA at $\alpha_N = 0$ (practically uncharged chains) for all three salts. The latter is related to the faster diffusion of the uncharged chains in comparison to the charged ones at the rather high ionic strength provided by 0.1 M XCl. In contrast to our result, Sedlak^{26,31} has reported an increasing trend of D_f with α_N (λ) up to $\alpha_N \approx 0.5$ ($\lambda \approx 0.12$), however at a

considerably higher c_p (= 36.6 g/L) and in salt free aPMA solutions. Förster *et al.*²⁷ report diffusion coefficients of quaternized poly(2-vinyl pyridine), QPVP, over a much broader range of λ values (from around 0.005 to more than 1000). Similarly to our case, no strong dependence of D_f on λ can be inferred for QPVP in the same λ -range as scanned in our work ($0.01 < \lambda < 0.24$). The slow diffusion coefficient, D_s , of PMA differs from D_f by approximately one order of magnitude, again similar to the QPVP case, and is almost constant in the whole λ range. It has to be noticed that in ref. 27 λ was varied by changing c_s and c_p and not α_N as in the PMA case reported herein.

The effect of different alkali metal ions on D_f and D_s is not as pronounced as their effect on aggregation. It may be noticed that both D_f and D_s of iPMA in 0.1 M CsCl are higher in comparison with 0.1 M LiCl and NaCl in the whole λ region, whereas with aPMA there is no obvious difference. The explanation of these subtle differences is justified only for the case of iPMA in 0.1 M CsCl and invokes the role of cations in screening of electrostatic interactions between negatively charged polyions. It is well known that polyions diffuse much faster in comparison with the equivalent neutral polymer chains due to their mutual electrostatic repulsion. If these interactions are screened, the diffusion should slow down. In the function of screening, Cs⁺ ions less effective than Li⁺ and Na⁺ ones, which stems from the effects discussed in relation to hydration/dehydration (see above). Cs⁺ ions are not so willing to release their hydration water upon binding to the carboxylate groups on PMA as are Li⁺ and Na⁺. They bind to the polyion's electrostatic atmosphere in accordance with the Coulomb forces. In the polyelectrolyte field, this type of binding is described as atmospheric binding in contrast to the site binding,²³ which involves dehydration. Therefore, Cs⁺ ions bind less strongly to PMA than do Li⁺ and Na⁺ ones and thus the diffusion of polyions with carboxylate groups is faster in CsCl solutions. This is naturally reflected both in D_f and in D_s values. As far as Li⁺ and Na⁺ ions are concerned, the mutual difference in diffusion coefficients is not significant. This finding may be related to the value of ΔH_{hydr} , which is closer for these two cations and considerably lower (by around 50 to 90 %) for the Cs⁺ ones.²¹

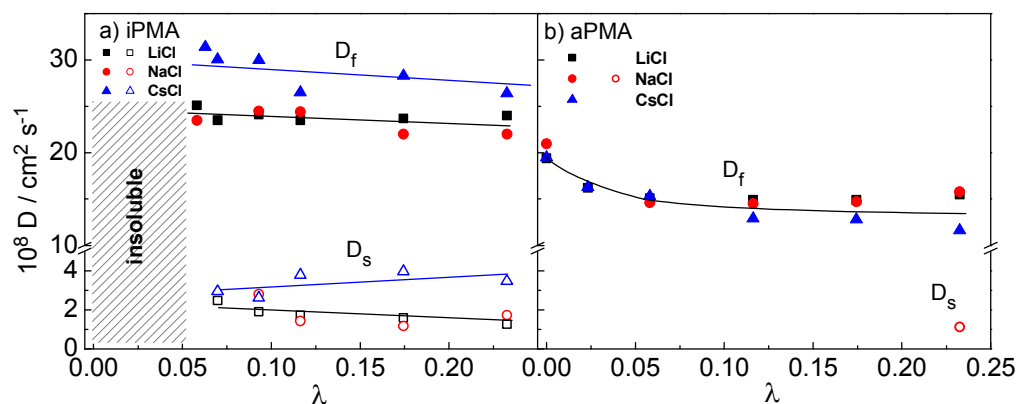


Figure 8. Fast, D_f , and slow diffusion coefficient, D_s , as a function of the parameter λ ($= \alpha_N c_p / c_s$) for a) iPMA and b) aPMA in the presence of 0.1 M LiCl (black squares), NaCl (red circles) and CsCl (blue triangles). The filled symbols denote the fast relaxation mode and the aggregates, and the open ones the slow relaxation mode.

Conclusions

In conclusion, we have shown that isotactic and atactic PMA chains aggregate in aqueous solutions at low degrees of neutralization, α_N , in the presence of 0.1 M LiCl, NaCl and CsCl. The aggregates, irrespective of the present cation, resemble spherical microgel-like particles with a core-shell structure. The density distribution between the core and the shell depends primarily on the chain tacticity and to a lesser extent on the nature of the cation. The effect of cations is revealed in the extent of aggregation. The aggregates' sizes follow the sequence (from the largest to the smallest) $\text{Na}^+ > \text{Li}^+ > \text{Cs}^+$ for aPMA and $\text{Li}^+ > \text{Na}^+ > \text{Cs}^+$ for iPMA, which was explained by the law of matching water affinities.

The iPMA chains form aggregates with a considerably denser core than the aPMA ones, as deduced from the shape parameter. Not only the density distribution, but also the outer and inner polarity of the aggregates is different. Thus, the aPMA aggregates have a more hydrophobic, although less compact, core. This was inferred from the measured optical contrast, as reflected by the refractive index increment values, and from previous fluorescence studies. The greater compactness of the iPMA aggregates was explained by proposing a model of cooperative hydrogen bond formation between chains in a helical conformation. The un-dissociated carboxyl groups are concentrated in these helical regions within the core and the dissociated ones in the disordered regions of the aggregates, *i.e.* in the corona. Such a model could also explain different sequence of cations for iPMA on one and for aPMA on the other hand (see above). It is suggested that the state of the hydrated iPMA aggregates is different from that of the hydrated aPMA ones. Consequently, the affinity of the Li^+ ions for carboxylates of the iPMA may become larger than that of the Na^+ ions.

Different chain conformations are not limited to low α_N . Investigations upon increasing α_N show that the slow mode, arising from the electrostatic interactions between the charged chains, is present for iPMA at all $\alpha_N > 0.25$ and in all 0.1 M XCl's, but for aPMA only at $\alpha_N = 1$ in 0.1 M NaCl. The most straightforward explanation of this is that the effective charge density of both PMAs is different due to different chain conformations. The helical conformation of iPMA, which also is preserved at higher α_N , leads to a locally higher charge density of iPMA in comparison with aPMA. It was concluded that the 0.1M XCl's are the border case, with respect to the ionic strength, at which the slow mode is observed in aqueous aPMA solutions. The 0.1 M concentration of XCl's is not sufficient to screen the electrostatic repulsion between iPMA chains and seems to be the border case for aPMA. Further investigations on the dependence of the slow mode on salt concentration in PMA solutions are in progress.

Acknowledgements

This work was financially supported by the Slovenian Research Agency, ARRS, through the Physical Chemistry program P1-0201. The authors are grateful to the Slovenian Research Agency, ARRS (Grants no. BI-FI/09-005, BI-FI/11-12-004), to the Academy of Finland (Grants no. 132404 and 134581), and to Finnish Society of Science and Letters (Magnus Ehrnrooth Foundation) for the financial support of the research visits.

Notes and references

^aDepartment of Chemistry and Biochemistry, Faculty of Chemistry and Chemical Technology, University of Ljubljana, Aškerčeva 5, P.O. Box 537, SI-1001 Ljubljana, Slovenia.

^bLaboratory of Polymer Chemistry, Department of Chemistry, University of Helsinki, P.O. Box 55, FIN-00014 HU, Helsinki, Finland

†Electronic Supplementary Information (ESI) available: details on solutions preparation, light scattering measurements and data treatment. See DOI: 10.1039/b000000x/

- 1 M. Rubinstein and G. A. Papoian, *Soft Matter*, 2012, **8**, 9265-9267 and papers therein.
- 2 V. Crescenzi, *Adv. Polym. Sci.*, 1968, **5**, 358-386.
- 3 K. Hatada, *J. Polym. Sci.: Part A*, 1999, **37**, 245-260.
- 4 J. C. Leyte, H. M. R. Arbouw-van der Veen and L. H. Zuiderweg, *J. Phys. Chem.*, 1972, **76**, 2559-2561.
- 5 N. Vlachy, J. Dolenc, B. Jerman and K. Kogej, *J. Phys. Chem B*, 2006, **110**, 9061-9071.
- 6 E. van den Bosch, Q. Keil, G. Filipcsei, H. Berghmans and H. Raynaers, *Macromolecules*, 2004, **37**, 9673-9675.
- 7 B. Jerman, M. Breznik, K. Kogej and S. Paoletti, *J. Phys. Chem. B*, 2007, **111**, 8435-8443.
- 8 B. Jerman and K. Kogej, *Acta Chim. Slov.*, 2006, **53**, 264-273.
- 9 J. Eliassaf and A. Silberberg, *Polymer*, 1962, **3**, 555-564.
- 10 J. Eliassaf, A. Silberberg and A. Katchalsky, *Nature*, 1955, **176**, 1119.
- 11 S. Ohoya, S. Hashiya, K. Tsubakiyama and T. Matsuo, *Polym. J.*, 2000, **32**, 133-139.
- 12 K. Kogej, H. Berghmans, H. Reynaers and S. Paoletti, *J. Phys. Chem. B*, 2004, **108**, 18164-18173.
- 13 S. Sitar, V. Aseyev and K. Kogej, *Polymer*, 2014, **55**, 848-854.
- 14 E. M. Loebl and J. J. O'Niell, *J. Polym. Sci.*, 1960, **45**, 538-540.
- 15 F. Hofmeister, *Arch. Exp. Pathol. Pharmacol.*, 1888, **24**, 247-260.
- 16 W. Kunz, J. Henle and B. W. Ninham, *Curr. Opin. Colloid Interface Sci.* 2004, **9**, 19-37.
- 17 K. Collins, *Biophys. J.* 1997, **72**, 65-76.
- 18 K. D. Collins, *Methods* 2004, **34**, 300-311.
- 19 K. Collins, G. W. Neilson and J. E. Enderby, *Biophys. Chem.* 2007, **128**, 95-104.
- 20 W. Kunz, *Curr. Opin. Colloid Interface Sci.* 2010, **15**, 34-39.
- 21 J. Kher, S. C. Flores and P. S. Cremer, *J. Phys. Chem. B* 2012, **116**, 7389-7397.
- 22 J. Heyda and J. Dzubiella, *Soft Matter*, 2012, **8**, 9338-9344.
- 23 U. P. Strauss and Y. P. Leung, *J. Am. Chem. Soc.* 1965, **87**, 1476-1480.
- 24 S. C. Lin, W. I. Lee and J. M. Schurr, *Biopolymers* 1978, **17**, 1041-1064.
- 25 R. Cong, E. Temyanko, P. S. Russo, N. Edwin and R. M. Uppu, *Macromolecules* 2006, **39**, 731-739.
- 26 M. Sedlak, Č. Konak, P. Štepanek and J. Jakeš, *Polymer* 1987, **28**, 873-879.
- 27 S. Förster, M. Schmidt and M. Antonietti, *Polymer* 1990, **31**, 781-792.
- 28 S. Förster and M. Schmidt, *Adv. Polym. Sci.* 1995, **120**, 51-133.
- 29 M. Drifford and J. P. Dalbiez, *Biopolymers* 1985, **24**, 1501-1514.
- 30 M. Sedlák, *Macromolecules* 1993, **26**, 1158-1162.
- 31 M. Sedlák, *Langmuir* 1999, **15**, 4045-4051.
- 32 C. Urban and P. Schurtenberger, *J. Colloid Interface Sci.* 1998, **207**, 150-158.
- 33 W. Schärtl, *Light Scattering from Polymer Solutions and Nanoparticle Dispersions*, Springer Verlag, Berlin, Heidelberg, 2007.
- 34 W. Brown, *Dynamic Light Scattering: The Method and Some Application*, Clarendon Press, Oxford, 1993.
- 35 E. V. Tarassova, V. Aseyev, A. Filippov and H. Tenhu, *Polymer* 2007, **48**, 4503-4510.
- 36 M. Kanao, Y. Matsuda and T. Sato, *Macromolecules* 2003, **36**, 2093-2102.
- 37 R. Schweins, J. Hollmann and K. Huber, *Polymer* 2003, **44**, 7131-7141.
- 38 C. Heitz, M. Rawiso and J. Francois, *Polymer* 1999, **40**, 1637-1650.
- 39 M. B. Huglin, *Light Scattering from Polymer Solutions*, Academic Press, New York, 1972.
- 40 A. Silberberg, J. Eliassaf and A. Katchalsky, *J. Polym. Sci.* 1957, **23**, 259-284.
- 41 G. Savin and W. Burchard, *Macromolecules* 2004, **37**, 3005-3017.
- 42 W. Burchard, *Macromolecules* 2004, **37**, 3841-3849.
- 43 U. M. Apel, R. Hentschke, and J. Helfrich, *Macromolecules* 1995, **28**, 1778-1785.
- 44 H. D. Burrows, D. Costa, M. L. Ramos, M. G. Miguel, M. H. Teixeira, A. A. C. C. Pais, A. J. M. Valente, M. Bastos and G. Bai, *Phys. Chem. Chem. Phys.*, 2012, **14**, 7950-7953.
- 45 S. Peljhan, E. Žagar, J. Cerkovnik and K. Kogej, *J. Phys. Chem. B*, 2009, **113**, 2300-2309.
- 46 K. Buyse and H. Berghmans, *Polymer* 2000, **41**, 1045- .
- 47 J. De Rudder, B. Berge and H. Berghmans, *Macromol. Chem. Phys.* 2002, **203**, 2083.
- 48 B. Hess and N. F. A. van der Vegt, *Proc. Natl. Acad. Sci.* 2009, **106**, 13296-13300.

We study the structure of aggregates formed by isotactic and atactic poly(methacrylic acid)s in aqueous solutions with added alkali chlorides using light scattering.

