

# Soft Matter

Accepted Manuscript



This is an *Accepted Manuscript*, which has been through the Royal Society of Chemistry peer review process and has been accepted for publication.

*Accepted Manuscripts* are published online shortly after acceptance, before technical editing, formatting and proof reading. Using this free service, authors can make their results available to the community, in citable form, before we publish the edited article. We will replace this *Accepted Manuscript* with the edited and formatted *Advance Article* as soon as it is available.

You can find more information about *Accepted Manuscripts* in the [Information for Authors](#).

Please note that technical editing may introduce minor changes to the text and/or graphics, which may alter content. The journal's standard [Terms & Conditions](#) and the [Ethical guidelines](#) still apply. In no event shall the Royal Society of Chemistry be held responsible for any errors or omissions in this *Accepted Manuscript* or any consequences arising from the use of any information it contains.

## ARTICLE

# Surface micro/nanotopography, wetting properties and the potential for biomimetic icephobicity of skunk cabbage *Symplocarpus foetidus*

Cite this: DOI: 10.1039/x0xx00000x

Rahul Ramachandran and Michael Nosonovsky\*

Received 00th January 2012,  
Accepted 00th January 2012

DOI: 10.1039/x0xx00000x

[www.rsc.org/](http://www.rsc.org/)

Lotus (*Nelumbo nucifera*) is known for its two remarkable properties: the superhydrophobicity and thermogenesis; however, the relationship between these two properties remains obscure. Most botanists agree that thermogenesis helps to attract pollinators, while non-wetting helps to catch pollinators and prevents contamination. Here we investigate the surface micro- and nanotopography and wetting properties of eastern skunk cabbage (*Symplocarpus foetidus*), another thermogenic plant, which is known for its ability to melt snow. The skunk cabbage leaves are hydrophobic but not superhydrophobic, and they have high contact angle hysteresis (similar to the rose petal effect). We develop a heat transfer model to relate the icephobicity with heat transfer and discuss the biomimetic potential that both thermogenic and superhydrophobic plants may have for icephobicity in soft materials.

## 1 Introduction

Superhydrophobicity, also known as the Lotus effect, has become an object of intensive studies in the past decade leading to a number of important findings and technology advances in producing self-cleaning, water-repellent, omniphobic, antifouling, and icephobic surfaces<sup>1-14</sup>. The lotus (*Nelumbo nucifera*) leaf with its hierarchical structure of papillae covered with rough wax served an initial source of inspiration for the artificial superhydrophobic surfaces. A superhydrophobic surface typically has apparent water contact angle (CA) greater than 150° and small CA hysteresis, i.e., the difference between the advancing and receding CAs. The topography of a surface affects its wetting state<sup>15,16</sup>.

The studies of hydrophilic and hydrophobic plants also revealed another interesting phenomenon, which was called the rose petal effect. The rose petal has high CA, often in the superhydrophobic region and, at the same time, strong adhesion with water and, therefore, large CA hysteresis. The observation caused a discussion of the very concept of the hydrophobicity and how it is possible for a surface to be “superhydrophobic” (meaning the strong repellence of water) simultaneously with

having strong adhesion to water<sup>8,9</sup>. An alternative term suggested for the rose petal effect in the literature is the “parahydrophobic state”<sup>17</sup>. Among the proposed answers was that water-to-solid adhesion is not characterized by a single number, such as the apparent CA. Instead, the normal and shear loading can be considered separately, presumably, with the CA and CA hysteresis being wetting characteristics during normal and shear loading. Shear and normal loads can be applied and measured independently using the centrifugal adhesion balance<sup>14</sup>. Furthermore, the very concept of static CA is not well defined since the CA may depend on how water droplet was created and does not necessarily converge with time to a single value<sup>18</sup>. It has also been shown recently that surfaces can exhibit high contact angle coupled with either low or high adhesion by virtue of just surface topography alone<sup>19</sup>.

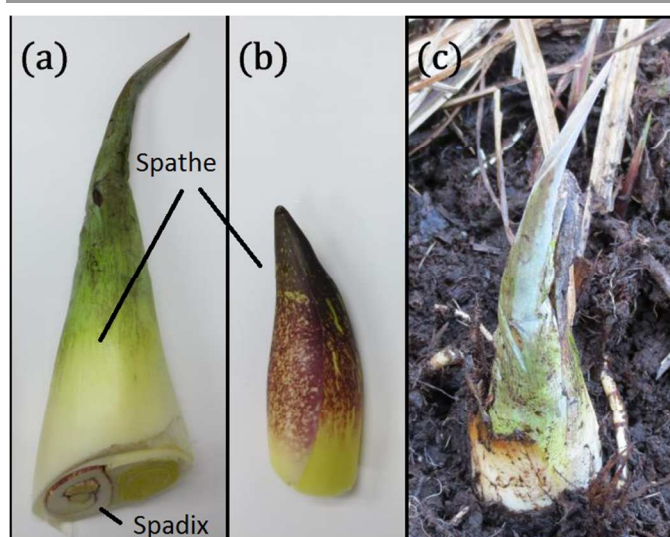
Icephobicity, or the ability to repel ice, constitutes another property related to the superhydrophobicity. The exact definition of the icephobicity remains the subject of debate, as well as its relationship with the superhydrophobicity<sup>20-26</sup>. However, given that ice will form on any surface, the parameter of practical importance is the work of adhesion between the substrate and ice<sup>26</sup>.

Besides the superhydrophobicity, another property which is unusual in lotus is the thermogenesis. Thermogenic plants, including the lotus, can raise their temperature above that of the surrounding air, sometimes exceeding the latter by 20 °C. The role of thermogenesis in plants is still debated by botanists; however, the most popular hypothesis is that heat helps to spread chemicals that attract pollinators to the plant<sup>27, 28</sup>. The heat is generated in mitochondria of the plant cells. Besides lotus, only few plants have thermogenic properties including some tropical plants, such as the voodoo lily (*Amorphophalus*), and some plants common in the northern climate including the eastern skunk cabbage (*Symplocarpus foetidus*, also referred to in literature as eastern North American skunk cabbage) and several related plants from the *Araceae* (arum) family. The skunk cabbage is known for its ability to emerge from under snow.

Apparently, there is no direct correlation between the superhydrophobicity and thermogenesis, since besides lotus there are no examples of plants which possess both properties. However, since these both properties may involve certain common features, such as the ability to repel ice, the issue requires further investigation. In this paper we study leaves of a thermogenic plant, *S. foetidus* and develop a model that can explain a link between the superhydrophobicity, thermogenesis and icephobicity.

## 2 *S. Foetidus* and icephobicity

Eastern skunk cabbage (*S. foetidus*) is a member of *Araceae* family and is of particular interest due to its peculiar thermogenic and thermoregulatory property. The plant is native to North American wetlands. It blooms in late winter or early spring, when there is still a snow cover on the ground. The ability of the plant to survive and melt through thick snow in below-freezing ambient conditions is of interest to us.



**Fig. 1** (a) the leaf of skunk cabbage enclosing spathe and spadix, and (b) the spathe. (c) Skunk cabbage as observed in its natural environment in wet land (Schlitz Audubon Nature Center, Milwaukee, WI) in the month of November.

The parts of the skunk cabbage shoot are the green leaves (Fig. 1a) and the purple modified leaves called spathes (Fig. 1b) which enclose the flowering part of the plant called spadix. It is the spadix which emits the foul smelling odor that gives the plant its name. Spadix also plays an important role in

thermogenesis. The plant is able to maintain an average spadix temperature of 15°C when the ambient temperature is -15°C<sup>29</sup>. Transpiration plays an important part in regulating the plant temperature. In hot tropical climate, thermogenic plants like lotus maintain their temperature below that of surroundings by evaporating water. Similarly, plants reduce water loss by evaporation to maintain temperatures above that of surroundings. In plants, the water loss to atmosphere and gaseous exchange occurs through openings on leaf surface called stomata. Usually leaves of terrestrial plants have stomata on their lower (abaxial) surface. Aquatic plants like lotus have stomata on their upper (adaxial) surface. Many plant leaves are usually covered by a thin wax coating called cuticle whose one of many functions is to prevent excessive water loss. The cuticle is sometimes further covered with epicuticular wax crystals of different geometries like platelets, tubules, rodlets etc.<sup>30</sup> The size and geometry of these wax crystals are some of the decisive factors in the wetting state of leaf, e.g. lotus leaf.

The thermogenesis of skunk cabbage is well documented in literature<sup>29, 31, 32</sup>. There have been studies on the heat generation at the spadix. But according to the authors' knowledge, there has been no study on regulation of heat loss through the leaves or spathe and of the plant's icephobic properties. Here we study the surface morphology of the leaves and spathe of skunk cabbage and how it may help in regulating heat loss.

### 2.1 Does it fit the definition of icephobicity?

Prior to discussing the icephobic properties of skunk cabbage we should revisit the definition of the icephobicity, since the term is often used by different authors with somewhat different meanings. The words "icephobic" and "icephobicity" have been used in the literature for some time, and the first documented use goes back to the late 1940s: "Urgently needed are coatings of one kind or another that prevent or lessen adhesion of ice to various kinds of surfaces. An engineer in the Navy Department's Bureau of Ships coined a word to succinctly describe such coatings: "icephobic." Need for such materials isn't confined to military ships, guns and planes: In war or peace ice is a problem on railroad switch frogs, electrical conductor rails or trolley wires, signal mechanisms, refrigerator freezing units, valves and other equipment exposed to wintry weather, and — of course — commercial aircrafts and marine vessels."<sup>33</sup>

The term "icephobic" is analogous to the hydrophobicity and other "-phobicities" which are common in physical chemistry (oleophobicity, lipophobicity, omniphobicity, amphiphobicity, etc). A discussion of possible thermodynamic definition of icephobicity is found in<sup>34</sup>. The extensive controversy among scholars on whether the icephobicity is related to the superhydrophobicity came to the conclusion that there is no direct correlation<sup>21, 24, 35</sup>.

There are multiple approaches to characterize icephobic surfaces. One approach uses the critical shear (or normal) stress between ice and the surface. Surfaces with shear strength between 150 kPa and 500 kPa<sup>26, 36</sup> and even as low as 15.6 kPa<sup>37</sup> are called icephobic. Another uses delay in ice nucleation and freezing. A third approach defines icephobic surfaces by their ability to repel small incoming droplets at below freezing temperatures<sup>38, 39</sup>.

The above three approaches correspond to three different, although related, properties of anti-icing surfaces, which are prevent freezing of condensing water, prevent freezing of incoming water, and have weak adhesion with any ice formed.

Mechanical properties of ice and the substrate are also of great importance since removal of ice occurs by fracture, either in the mode I (normal) or mode II (shear) cracking, so that crack concentrators are major contributors to the reduced strength. This makes the composite (solid-air-water or Cassie-Baxter) interface beneficial for the icephobicity<sup>24</sup>.

There is a certain parallelism between the definition of the icephobicity and the superhydrophobicity. The latter is defined by the high water contact angle (CA) >150° and by low CA hysteresis, although very high CA can co-exist with high CA hysteresis (the rose petal effect<sup>18</sup>). Low CA hysteresis corresponds to shear mode of loading at the solid-water interface while a high CA corresponds to the normal loading. The ability to bounce-off incoming droplets constitutes the third aspect of the superhydrophobicity<sup>40</sup>.

The ability of the skunk cabbage to repel ice formation is likely to be related with the elevated temperature of the leaves rather than with the surface structure, however, the surface microstructure should be investigated.

### 3 Experimental

A sample of the plant was collected in early November from a wet land in Milwaukee. The plant had none of its large leaves left at this time of the year. All that remained above ground was the spadix enclosed in a spathe and fresh unsprouted leaves, prepared to weather the long and frigid winter (Fig. 1c). Water contact angles (WCA) on the spathe and leaf surfaces of a freshly cut plant (within three hours after cutting) were measured using a goniometer (Ramé-Hart). The microstructures of the leaf and spathe surfaces were studied using scanning electron microscopy (SEM).

#### 3.1 SEM Sample preparation

Three different sets of samples of leaves and spathe were prepared. Biological specimens, such as cells and tissues or tissue components, must first be fixed to preserve their native structure. Chemical fixation typically uses formalin or glutaraldehyde of varying per cent concentrations in a buffer of a specific pH. The first set (S1) was air dried in a desiccator for over two days at room temperature<sup>41</sup>. The second set (S2) was prepared by chemical fixation in liquid phase. A 10 ml aqueous solution of 2.5% glutaraldehyde, 0.1M HEPES buffer (pH 7.2) and 0.02% triton X-100 was prepared and the samples were left overnight in the solution. The samples were then washed thrice with distilled water and then left overnight in an 8 ml aqueous solution of 1% osmium tetroxide. The samples were then dehydrated in a series of steps using anhydrous ethanol in 20%, 40%, 60%, 80% and 100% (thrice) solutions. This was followed by critical point drying (Blazers CPD 020) to remove ethanol from the samples.

Since triton X-100 removes all the epicuticular wax, a third set (S3) of samples were prepared using vapor phase fixation<sup>42</sup> to maintain the structure of the cells, while retaining the waxes on the surface. Samples were first exposed to vapor of 2% glutaraldehyde and then 2% osmium tetroxide both at room temperature.

All three sample sets were fixed on aluminum stubs using double sided tape. Then they were sputter coated in an Emitech K575X sputter coater with an Iridium target. The thickness of coating varied based on the fixation procedure- S1 required 4 nm while S2 required 5 nm and S3 required 8 nm. Colloidal carbon paint was applied along the edges of the samples on

stubs to further reduce charging. The paint was applied using a fine brush under an optical microscope to ensure that leaf surfaces remained intact. The samples were observed in Hitachi S-4800 FE-SEM.

### 4 Results

The surfaces of both the leaf and spathe were seen to be hydrophobic (Fig. 2(a,b)). The leaf surface showed an average WCA of 92° and the spathe surface showed an average WCA of 97°. The surfaces also showed extremely high adhesion, with the water droplet not rolling off the vertical surface (Fig. 2(c)). The advancing and receding CAs on the leaf surface was 110° and 83° respectively with a CA hysteresis of 27°. This is similar to the rose-petal effect where the droplet is usually thought to be in the Cassie-Baxter impregnating wetting state. On the other hand, Marmur showed that the contact area of a drop with the solid in the Wenzel state can be higher by orders of magnitude compared with the Cassie-Baxter state, for the same contact angle<sup>43</sup>. It is therefore possible that a high contact angle and "adhesive" drop indicate the Wenzel "parahydrophobic" state<sup>17</sup>.

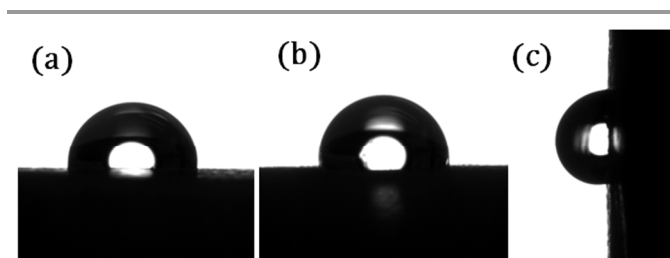


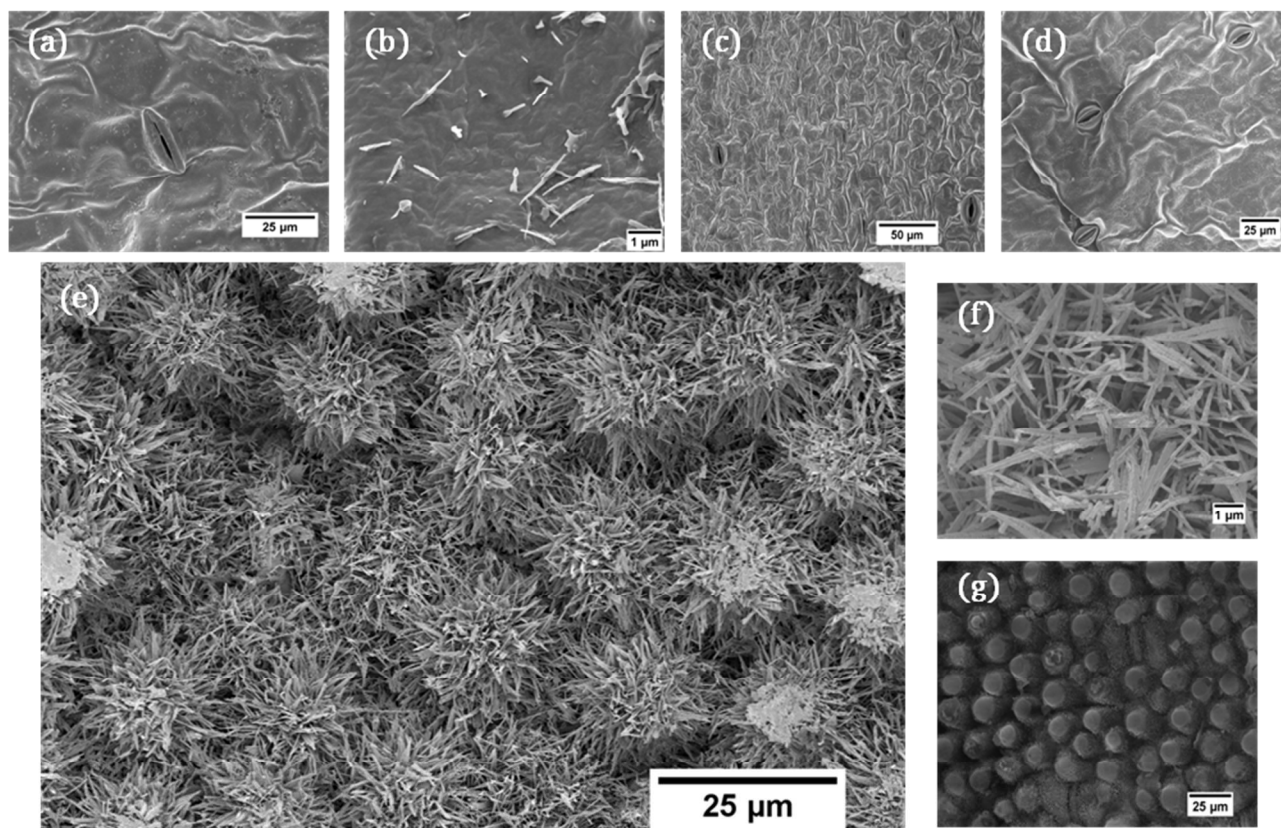
Fig. 2 Water droplets on (a) leaf (b) spathe (c) an adherent water droplet on the vertical surface of leaf

It was seen that vapor phase fixation procedure (sample set S3) yielded the best scanning electron micrograph results while preserving the structure of the epicuticular wax crystals. The sample sets S1 and S2 did not preserve the wax crystals. But S2 provided insight into the underlying microstructure. The scanning electron micrographs of the adaxial and abaxial surfaces of both the leaf and the spathe are shown in Fig. 3. The abaxial surface of the leaf showed pillars (~10 μm diameter) coated with wax rodlets (Fig. 3(e,f,g)). The adaxial surface of the leaf displayed a different surface texture with lack of pillar like structures and visibly far less density of wax rodlets (Fig. 3(a,b)). The adaxial and abaxial surfaces of the spathe also showed an absence of pillar like structures and dense wax rodlets (Fig. 3(c,d)). Interestingly, the adaxial surface of the leaf and the adaxial and abaxial surfaces of the spathe carried stomata, with the spathe showing a denser distribution of stomata. But the stomata on the abaxial surface of the leaf lay beneath the dense canopy of wax rodlets.

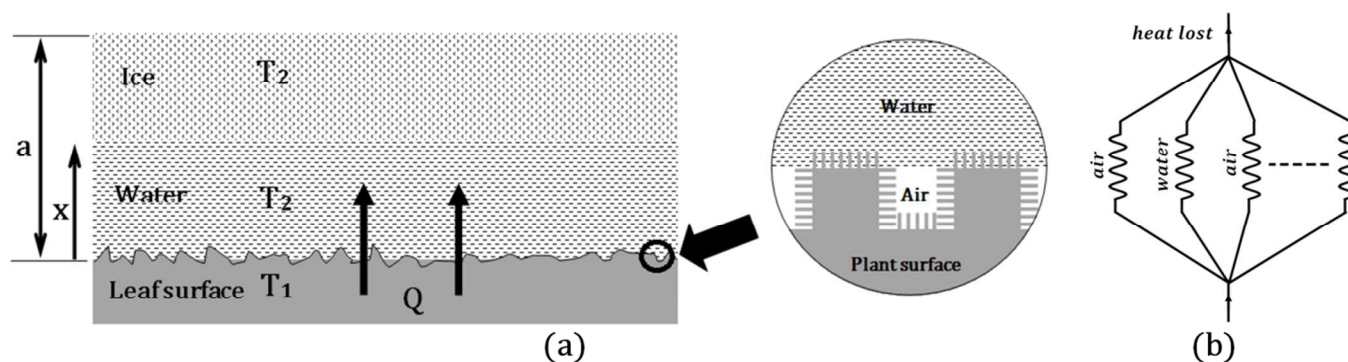
Skunk cabbage is known to survive the sub-zero temperatures of winter and bloom in late winter or early spring. The abaxial surface of the leaf is all that covers the spathe and spadix of the plant during the extremely cold winters. Therefore, from the stand point of conserving heat, it seems logical to have fewer numbers of stomata on the surface exposed to the outside weather. Stomata directly connect the interstitial spaces below the epidermis to the environment for transpiration. Reduced transpiration means, minimal heat loss to the surroundings.

The abaxial surface showed hierarchical roughness with high adhesion<sup>44</sup>. This may be similar to high contact angle coupled with high hysteresis seen in leaves of plants like garlic and scallion of genus *Allium*. Such leaves have a rough surface covered with epicuticular wax which results in high contact angle. But they also have strong smelling diallyl disulphide, a hydrophobic defect which causes contact line pinning, and thus high contact angle hysteresis<sup>45</sup>. Skunk cabbage is known to have dimethyl disulphide which is known to volatilize and cause the peculiar smell associated with the plant<sup>46</sup>. The dimethyl disulphide might be acting as hydrophobic defects on the skunk cabbage leaf resulting in high adhesion coupled with hydrophobicity.

In addition, a freezing test was performed. A small piece (2 x 2 cm) of skunk cabbage leaf was cut and a water droplet was placed on it. After that, the leaf was placed in a freezer of a kitchen refrigerator (temperature -5 °C). Several hours later, after the water droplet froze, the leaf was removed.



**Fig. 3** Scanning electron micrographs of skunk cabbage leaf and spathe surfaces. (a) Vapor phase fixed adaxial leaf surface, (b) scarcely distributed wax rodlets on the adaxial leaf surface, (c) adaxial surface of vapor phase fixed spathe showing stomata (d) abaxial surface of vapor phase fixed spathe showing stomata, (e) vapor phase fixed abaxial leaf surface showing pillars covered with wax rodlets, (f) the wax rodlets, and (g) liquid phase fixed abaxial surface of leaf showing the pillars tops void of wax rodlets.



**Fig. 4** (a) Heat transfer at composite interface on the leaf surface resulting in melting of ice and an advancing water-ice interface (b) equivalent electrical circuit showing thermal resistances at the composite interface.

The ice droplet was stuck to the leaf surface demonstrating relatively strong adhesion and thus no icephobic property of the cut leaf was found.

## 5 Discussion

The above results show that the leaf has complex micro- and nanotopography which affects its wetting properties. The leaf is hydrophobic, however, no superhydrophobic properties were found. A cut leaf demonstrates strong adhesion to ice. This implies that the living leaf repels ice / snow due to its

thermogenic properties. Below we suggest a simple model which related the heat flow to the surface structure and wetting properties.

Consider a leaf surface at temperature  $T_1$ , initially covered with a layer of ice at temperature  $T_2$  and thickness 'a'. It is assumed that the leaf surface maintains a steady temperature and the heat loss to the surrounding air is neglected. The leaf surface is rough and forms a solid-liquid-vapor composite interface as shown in Fig. 4(a). When  $T_1 > T_2$ , heat flows from the plant surface to ice and it melts to form water. At any time  $t$ , let the water-ice interface be located at a distance 'x' from the

plant surface. The heat flow from the leaf to ice can be written as

$$Q = LA \frac{dx}{dt} \quad (1)$$

where  $L$  is the latent heat of fusion of ice,  $A$  is the projected area of the leaf surface and  $\frac{dx}{dt}$  is the velocity at which the water-ice interface advances. In order to reach the water-ice interface, this heat has to flow through the water, as well as the leaf-water interface. Therefore

$$Q = h_W A (T_i - T_2) \quad (2)$$

and

$$Q = \frac{T_1 - T_i}{R_{th}} \quad (3)$$

where  $T_i$  is the leaf-water interface temperature,  $h_W$  is the heat transfer coefficient of water and  $R_{th}$  is the thermal resistance of the composite interface. From eq. 2 and 3,

$$Q = \frac{T_1 - T_2}{\frac{1}{h_W} + R_{th}} \quad (4)$$

The thermal resistance of the composite interface can be represented as electrical resistors connected in parallel as shown in Fig. 4(b). If  $f_{WA}$  is the fractional flat area of the water-air interface,

$$1/R_{th} = h_A f_{WA} + h_W A (1 - f_{WA}) \quad (5)$$

Combining eq. 1, 4 and 5 we get,

$$\left( \frac{1}{h_W} + \frac{1}{h_A f_{WA} + h_W (1 - f_{WA})} \right) dx = (T_1 - T_2) dt \quad (6)$$

Integrating,  $\frac{L}{(T_1 - T_2)} \left( \frac{1}{h_W} + \frac{1}{h_A f_{WA} + h_W (1 - f_{WA})} \right) \int_0^a dx = \int_0^t dt$ , we get the time required to melt an ice layer of thickness 'a',

$$t = \frac{La}{(T_1 - T_2)} \left( \frac{1}{h_W} + \frac{1}{h_A f_{WA} + h_W (1 - f_{WA})} \right) \quad (7)$$

If the water-air interface has a roughness factor  $r_f$ , then

$$t = \frac{La}{(T_1 - T_2)} \left( \frac{1}{h_W} + \frac{1}{h_A f_{WA} + h_W r_f (1 - f_{WA})} \right) \quad (8)$$

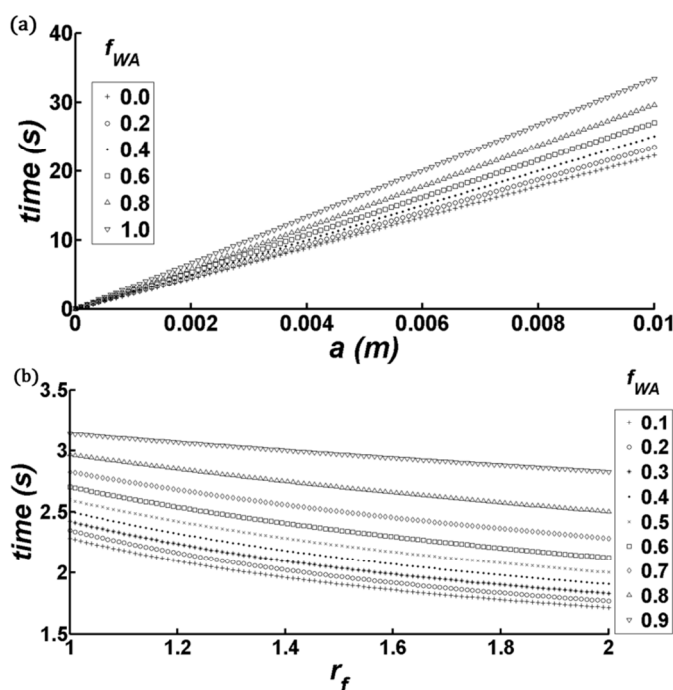


Fig. 5 (a) Time for melting of ice layer (thickness,  $a$ ) at different fractional flat area of the water-air interface (b) time for melting an ice layer 1mm thick at different fractional flat area of the water-air interface ( $f_{WA}$ ) and roughness factors ( $r_f$ ).

The plots in Fig. 5 are obtained using nominal values of  $h_A = 10 \text{ W/m}^2\text{K}$ ,  $h_W = 20 \text{ W/m}^2\text{K}$ ,  $L = 334 \text{ kJ/kg}$ ,  $T_1 = 15 \text{ }^\circ\text{C}$

and  $T_2 = 0^\circ\text{C}$ . As the wetted area of the leaf surface decreases, the longer it takes for the heat transfer to occur (Fig. 5(a)). Therefore more the air pockets on leaf surface, the longer the heat is retained. Fig. 5(b) shows that as the surface becomes rougher, the heat loss speeds up. It is also seen that roughness is a predominant factor for heat loss only when the fractional flat area of the water-air interface ( $f_{WA}$ ) is low. As  $f_{WA}$  increases, the effect of  $r_f$  on heat loss wanes.

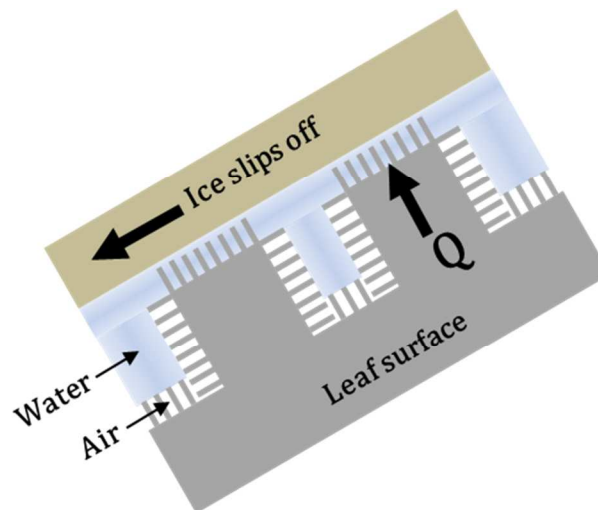


Fig. 6 The heat produced by the skunk cabbage plant in tandem with the high adhesion can maintain a slippery layer of water on the leaf surface. Thus the ice slips off the leaf surface.

From the above discussion, it is clear that changing the surface texture ( $r_f$  and  $f_{WA}$ ) can either help to conserve heat in extreme cold, or melt the ice cover. In the case of skunk cabbage leaf, water droplets are in a Cassie-Baxter impregnating wetting state with high adhesion possibly due to hydrophobic defects. The heat produced by the plant should be able to maintain a thin impregnated layer of liquid water and air pockets between the leaf surface and surrounding ice (Fig. 6). This ensures minimal adhesion between ice and leaf surface, and ice readily slips off under its own weight. This process can be thought of as similar to the Nepenthes pitcher plant inspired slippery liquid-infused porous surfaces<sup>13, 47</sup>. Also, maintaining a water-air composite interface is conducive to heat conservation because water and air have thermal conductivities of  $0.56 \text{ W/mK}$  and  $0.02 \text{ W/mK}$  (at  $275 \text{ K}$ ,  $1 \text{ atm}$ ) respectively, while ice has a thermal conductivity of  $2.2 \text{ W/mK}$  (at  $273 \text{ K}$ ). Note also that the skunk cabbage plant is able to produce heat with the output up to  $1 \text{ W}$ <sup>28</sup>. Given the latent heat of melting of ice  $334 \text{ J/g}$ , such heat output is sufficient to melt one gram of ice in 334 seconds.

Taking inspiration from the skunk cabbage plant, surfaces with Cassie-Baxter impregnating wetting state can be used in tandem with a heat source as functional icephobic surfaces. Such surfaces meet one of the definitions of icephobicity i.e., low adhesion between the surface and ice. The heat and the surface topography should ensure a slippery water layer on the surface. Also, the Cassie-Baxter impregnating wetting state helps to reduce heat loss compared to Wenzel wetting state. Thus by controlling the wetting state of a surface we can control not only contact angle and contact angle hysteresis, but also other surface properties like local heat transfer coefficient, ice adhesion and rate of corrosion<sup>48</sup>.

## 6 Conclusion

We studied wetting properties of the thermogenic skunk cabbage. The water contact angle was found to be  $92^\circ$  with very

high adhesion displaying rose-petal like or “parahydrophobic” effect. The microstructure of the leaf was bumpy with hair like wax rodlets, indicating the possibility of Cassie-Baxter impregnated wetting state with air pockets trapped between the surface and water. Experiment with ice (on a cut leaf) showed strong adhesion of ice to the surface. It is therefore likely that elevated temperature is responsible for ice repellence in the living plant. The leaf’s microstructure could maintain a slippery water layer on it, reducing ice adhesion. Also, the composite interface can minimize heat loss. As far as the biomimetic potential of the plant, we conclude that the rose-petal effect-like structure can be used to decrease ice contact area for icephobic surfaces.

### Acknowledgements

The authors would like to thank M. Smith at the Schlitz Audubon Nature Center, Milwaukee, WI for helping to collect the sample of skunk cabbage. The authors would also like to thank H. Owen at Biological Sciences, University of Wisconsin Milwaukee (UWM) for discussions and guidance on SEM sample preparation and imaging. We also acknowledge the partial support of the UWM Research Grant Initiative grant 101X245 and National Science Foundation grant IUCRC FRP 1331532.

### Notes and references

\*College of Engineering & Applied Science, University of Wisconsin-Milwaukee, Milwaukee, WI 53211, U.S.A. E-mail: nosonovs@uwm.edu, Tel.: +1-414-229-2816, Fax: +1-414-229-6958.

- 1 C. W. Extrand, *J. Colloid Interface Sci.*, 1998, **207**, 11-19.
- 2 A. Marmur, *Langmuir*, 2003, **19**, 8343-8348.
- 3 A. Marmur, In *A Guide to the Equilibrium Contact Angles*, CRC Press, 2009, pp.3-18.
- 4 E. Bormashenko, Y. Bormashenko, T. Stein, G. Whyman and R. Pogreb, *Langmuir*, 2007, **23**, 4378-4382.
- 5 E. Bormashenko, Y. Bormashenko, G. Whyman, R. Pogreb, A. Musin, R. Jager and Z. Barkay, *Langmuir*, 2008, **24**, 4020-4025.
- 6 E. Bormashenko, T. Stein, R. Pogreb and D. Aurbach, *Journal of Physical Chemistry C*, 2009, **113**, 5568-5572.
- 7 E. Bormashenko, *Wetting of Real Surfaces*, De Gruyter, Berlin, Boston, 2013.
- 8 W. Li and A. Amirfazli, *Adv Mater*, 2007, **19**, 3421-3422.
- 9 S. Wang and L. Jiang, *Adv Mater*, 2007, **19**, 3423-3424.
- 10 R. Tadmor, P. Bahadur, A. Leh, H. E. N'guessan, R. Jaini and L. Dang, *Phys. Rev. Lett.*, 2009, **103**, 266101.
- 11 R. Tadmor, *Soft Matter*, 2011, **7**, 1577-1580.
- 12 M. Nosonovsky and B. Bhushan, *Current Opinion in Colloid & Interface Science*, 2009, **14**, 270-280.
- 13 M. Nosonovsky, *Nature*, 2011, **477**, 412-413.
- 14 H. E. N'guessan, A. Leh, P. Cox, P. Bahadur, R. Tadmor, P. Patra, R. Vajtai, P. M. Ajayan and P. Wasnik, *Nature Communications*, 2012, **3**, 1242.
- 15 W. Xu, R. Leeladhar, Y. T. Kang and C. Choi, *Langmuir*, 2013, **29**, 6032-6041.
- 16 J. V. I. Timonen, M. Latikka, O. Ikkala and R. H. A. Ras, *Nature Communications*, 2013, **4**, 2398.
- 17 A. Marmur, *Soft Matter*, 2012, **8**, 6867-6870.
- 18 B. Bhushan and M. Nosonovsky, *Philosophical Transactions of the Royal Society A-Mathematical Physical and Engineering Sciences*, 2010, **368**, 4713-4728.
- 19 S. Peng, D. Tian, X. Miao, X. Yang and W. Deng, *J. Colloid Interface Sci.*, 2013, **409**, 18-24.
- 20 A. J. Meuler, G. H. McKinley and R. E. Cohen, *Acs Nano*, 2010, **4**, 7048-7052.
- 21 S. A. Kulinich, S. Farhadi, K. Nose and X. W. Du, *Langmuir*, 2011, **27**, 25-29.
- 22 V. Bahadur, L. Mishchenko, B. Hatton, J. A. Taylor, J. Aizenberg and T. Krupenkin, *Langmuir*, 2011, **27**, 14143-14150.
- 23 P. Guo, Y. Zheng, M. Wen, C. Song, Y. Lin and L. Jiang, *Adv Mater*, 2012, **24**, 2642-2648.
- 24 M. Nosonovsky and V. Hejazi, *ACS Nano*, 2012, **6**, 8488-8491.
- 25 L. B. Boinovich and A. M. Emelyanenko, *Mendeleev Communications*, 2013, **23**, 3-10.
- 26 A. J. Meuler, J. D. Smith, K. K. Varanasi, J. M. Mabry, G. H. McKinley and R. E. Cohen, *Acs Applied Materials & Interfaces*, 2010, **2**, 3100-3110.
- 27 R. S. Seymour and P. Schultze-Motel, *Nature*, 1996, **383**, 305-305.
- 28 R. S. Seymour and P. Schultze-Motel, *Philosophical Transactions of the Royal Society of London Series B-Biological Sciences*, 1998, **353**, 935-943.
- 29 R. S. Seymour and P. Schultze Motel, *Endeavour*, 1997, **21**, 125-129.
- 30 W. Barthlott, C. Neinhuis, D. Cutler, F. Ditsch, I. Meusel, I. Theisen and H. Wilhelm, *Bot. J. Linn. Soc.*, 1998, **126**, 237-260.
- 31 S. Camazine and K. J. Niklas, *Am. J. Bot.*, 1984, **71**, 843-850.
- 32 K. Ito, T. Ito, Y. Onda and M. Uemura, *Plant and Cell Physiology*, 2004, **45**, 257-264.
- 33 *Chemical Industries*, 1950, **67**, 559.
- 34 V. Hejazi, K. Sobolev and M. Nosonovsky, *Scientific Reports*, 2013, **3**, 2194.
- 35 S. Jung, M. Dorrestijn, D. Raps, A. Das, C. M. Megaridis and D. Poulidakos, *Langmuir*, 2011, **27**, 3059-3066.
- 36 R. Menini and M. Farzaneh, *Surface and Coatings Technology*, 2009, **203**, 1941-1946.
- 37 P. Kim, T. Wong, J. Alvarenga, M. J. Kreder, W. Adorno-Martinez and J. Aizenberg, *ACS Nano*, 2012, **6**, 6569-6577.
- 38 L. Zheng, Z. Li, S. Bourdo, K. R. Khedir, M. P. Asar, C. C. Ryerson and A. S. Biris, *Langmuir*, 2011, **27**, 9936-9943.
- 39 R. Shabani and H. J. Cho, *Microfluidics and Nanofluidics*, 2013, **15**, 587-597.
- 40 M. Nosonovsky and B. Bhushan, *Journal of Physics-Condensed Matter*, 2008, **20**, 395005.
- 41 A. K. Pathan, J. Bond and R. E. Gaskin, *Micron*, 2008, **39**, 1049-1061.
- 42 K. W. Kim, *Micron*, 2008, **39**, 976-984.
- 43 A. Marmur, *Langmuir*, 2004, 3517-3519.
- 44 K. L. Cho, A. H. - Wu, I. I. Liaw, D. Cookson and R. N. Lamb, *Journal of Physical Chemistry C*, 2012, **116**, 26810-26815.
- 45 F. Chang, S. Hong, Y. Sheng and H. Tsao, *Appl. Phys. Lett.*, 2009, **95**, 064102.
- 46 E. N. Kozen, Master of Science, Indiana University of Pennsylvania, 2013.



- 47 T. Wong, S. H. Kang, S. K. Y. Tang, E. J. Smythe, B. D. Hatton, A. Grinthal and J. Aizenberg, *Nature*, 2011, **477**, 443-447.
- 48 F. Zhang, L. Zhao, H. Chen, S. Xu, D. G. Evans and X. Duan, *Angew. Chem. -Int. Edit.*, 2008, **47**, 2466-2469.