

# Soft Matter

Accepted Manuscript



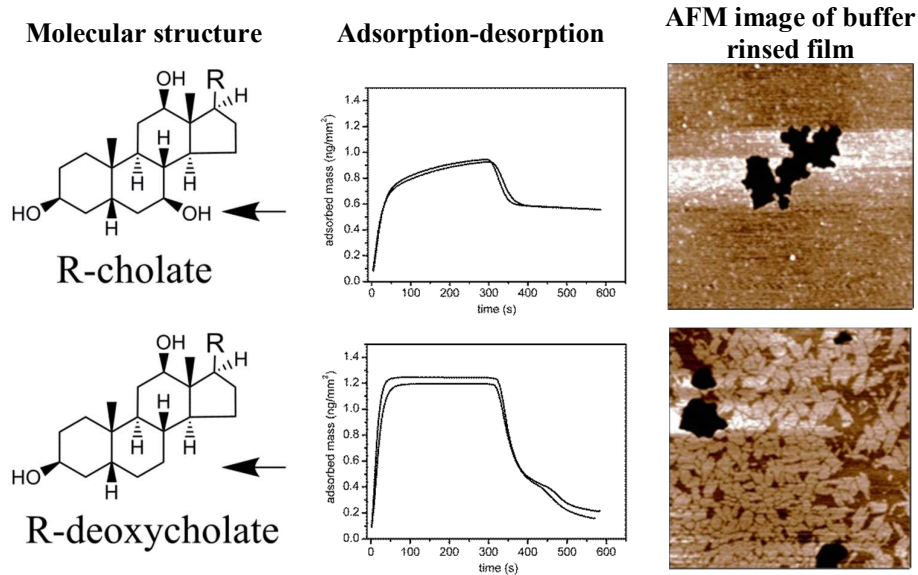
This is an *Accepted Manuscript*, which has been through the Royal Society of Chemistry peer review process and has been accepted for publication.

*Accepted Manuscripts* are published online shortly after acceptance, before technical editing, formatting and proof reading. Using this free service, authors can make their results available to the community, in citable form, before we publish the edited article. We will replace this *Accepted Manuscript* with the edited and formatted *Advance Article* as soon as it is available.

You can find more information about *Accepted Manuscripts* in the [Information for Authors](#).

Please note that technical editing may introduce minor changes to the text and/or graphics, which may alter content. The journal's standard [Terms & Conditions](#) and the [Ethical guidelines](#) still apply. In no event shall the Royal Society of Chemistry be held responsible for any errors or omissions in this *Accepted Manuscript* or any consequences arising from the use of any information it contains.

**The adsorption-desorption behaviour of bile salts on hydrophobic interfaces is sensitive to molecular structure and influences the interfacial behaviour of colipase**



## ARTICLE

## The adsorption-desorption behaviour and structure function relationships of bile salts

Cite this: DOI: 10.1039/x0xx00000x

Roger Parker,<sup>a</sup> Neil M. Rigby,<sup>a</sup> Michael J. Ridout,<sup>a</sup> A. Patrick Gunning<sup>a</sup> and Peter J. Wilde<sup>a</sup>

Received 00th May 2014,  
Accepted 00th xxx 2014

DOI: 10.1039/x0xx00000x

www.rsc.org/

The digestion of dietary components in the human gastrointestinal (GI) tract is a complex dynamic, inherently heterogeneous process. A key aspect of the digestion of lipid in the GI tract is the combined action of bile salts, lipase and colipase in hydrolysing and solubilising dispersed lipid. The bile salts are a mixture of steroid acid conjugates with surfactant properties. In order to examine whether the different bile salts have different interfacial properties their dynamic interfacial behaviour was characterised. Differences in the adsorption behaviour to solid hydrophobic surfaces between different bile salt species were studied using dual polarisation interferometry and atomic force microscopy (AFM) under physiological conditions. Specifically, the cholates adsorbed more slowly and a significant proportion were irreversibly adsorbed following buffer rinsing. Whereas the deoxycholates and chenodeoxycholates adsorbed more rapidly and desorbed to a greater extent following buffer rinsing. The different conjugating groups (taurine, glycine) did not influence the behaviour. AFM showed that the interfacial structures that remained following buffer rinsing were also different between these two groups. In addition, the adsorption-desorption behaviour affected the adsorption of colipase to a solid surface. This supports the idea that cooperative adsorption occurs between certain bile salts and colipase to facilitate the adsorption and activity of pancreatic lipase in order to restore lipolytic activity in the presence of bile salts. This study provides insights into how differences in bile salt structure could affect lipase activity and solubilisation of lipolysis products and other lipid-soluble bioactive molecules.

### Introduction

In order to develop foods which may modulate the rate and location at which they deliver digestion products within the gastrointestinal tract it is necessary to have a deeper understanding of the digestion process. In particular, the small intestinal processing of lipids occurs through the mixing of the food with pancreatic secretions, bile from the liver and bicarbonate from the epithelium (e.g. from Brunner's glands). Lipase catalyses the hydrolysis of triacylglycerides to fatty acids, diglycerides and monoglycerides which form mixed micelles with other surface active species from which they can be absorbed into the intestinal epithelium. Bile salts, major components of bile, are surface active and play a key role at interfaces in combination with lipase and colipase. Their role is to displace existing surface active material, promote the adsorption of lipase and colipase, facilitate the removal of lipolysis product from the interface and form part of the mixed micelles which solubilise the lipolysis products.<sup>1-3</sup>

Bile typically contains 25 - 35% w/w bile salts.<sup>4</sup> Bile salts are conjugates of bile acids (derived by cholesterol oxidation in the

liver) with the amino acids glycine and taurine. Whereas the cholates (NaTC, NaGC) and the chenodeoxycholates (NaTCDC and NaGCDC) are synthesised in the liver and are termed primary bile salts, the deoxycholates (NaTDC and NaGDC) are formed by the dehydroxylation of the cholate largely in the colon. All the bile salts are susceptible to deconjugation to bile acids in the small intestine. Measurements have shown that 95% of the bile acids are reabsorbed before leaving the ileum (the lower part of the small intestine) from where they travel back to the liver via the hepatic portal vein and are retransformed to the original mix of conjugated bile salts ready for resecretion into the duodenum either directly from the liver or after storage in the gall bladder. This cycling is known as the "enterohepatic circulation". The bile salts have different abundances in bile and an average composition<sup>5</sup> is given in Table 1. The glycoconjugates form about 70% of the mixture and the tauroconjugates 30%. The cholates and chenodeoxycholates each comprise about 41-43%, the deoxycholates comprise about 12% and minor bile acids make up the remaining 5%.

The micellar properties of the bile salts were recently reviewed by Madenci and Egalhaaf,<sup>6</sup> Table 1. The glycoconjugates have well

defined critical micelle concentrations in the range 1 – 4 mM and aggregation numbers ranging from 9 -16. In contrast, the tauroconjugate cmc's are less well defined and occur at higher concentrations, particularly taurocholate (3 – 18 mM) and, to a lesser extent, taurochenodeoxycholate (0.9 – 7 mM) and they have correspondingly smaller aggregation numbers.

In the small intestine triglycerides are hydrolysed by pancreatic lipase. However, the presence of bile salts, necessary to remove lipolysis products and polar lipids from the interface, also inhibit pancreatic lipase activity.<sup>7</sup> Therefore, pancreatic lipase requires the cofactor colipase in order to act effectively in the presence of bile salts.<sup>7, 8</sup> Colipase has a molecular mass about 10 kDa with 93 amino acids. Its structure is stabilised by five disulphide bonds. X-ray<sup>9, 10</sup> and NMR<sup>11</sup> studies identified a four fingered structure of surface loops tipped with non-polar residues which lead to its adsorption at triglyceride-water interfaces. It also forms a 1:1 complex with lipase, tethering it to the triglyceride-aqueous phase interface and holding its "lid" domain open allowing the substrate access to its catalytic site.<sup>12</sup>

From an interface chemistry perspective, the process of pancreatic lipolysis is intriguing, particularly the action of the bile salts. Their chief function is the removal of material from the surface to enable lipase to access the interface, and to remove lipolysis product. In contrast, in the presence of colipase, they also promote the adsorption of the enzyme and its cofactor. It seems unlikely that a single surfactant could perform these two very different roles in a self-assembled system. However, the fact that there are several different forms of bile salt could help address this issue, allowing different bile salts to perform different roles during the duodenal lipid digestion process.

Therefore it was the aim of this study to determine whether the structure of individual bile salts influences their interfacial behaviour and interaction with the lipase cofactor colipase. We determined the adsorption-desorption properties of individual bile salts and the lipase cofactor colipase at a model hydrophobic solid-liquid interface. Dual polarisation interferometry (DPI) with a C18-modified silicon oxide sensor was used. DPI is an optical technique which is very sensitive to adsorbed mass, and rapid solvent exchange allows adsorption / desorption kinetics to be quantified. Firstly the behaviours of the individual pure bile salts were studied, to determine any structure-function relationships, followed by a study of the various interactions of the bile salts with co-lipase in order to understand whether the structure of the different bile salts could be

responsible for the multi-functionality of the bile. The micro- and nanoscale structural changes resulting from adsorption and desorption of bile salts from a molecularly-smooth hydrophobic surface were also imaged using atomic force microscopy (AFM).

## Material and methods

### Materials

Sodium taurocholate (NaTC), sodium glycocholate (NaGC), sodium taurodeoxycholate (NaTDC), sodium glycodeoxycholate (NaGDC), sodium taurochenodeoxycholate (NaTCDC) and sodium glycochenodeoxycholate (NaGCDC) were obtained from Sigma (See Fig. 1 for structures). Porcine co-lipase was from Roche. Bis-tris, sodium chloride, calcium chloride, ethanol, propanol and SDS were also from Sigma. The solutions were made up in pH 7.0, 2 mM bis-tris buffer containing 150 mM NaCl and 0, 1 or 10 mM CaCl<sub>2</sub>. Water was from a SG Labostar water purification system (Siemens) fed with deionised water.

### Dual polarisation interferometry (DPI)

A dual polarisation interferometer from Biolin (formerly Farfield Scientific, model Analight Bio200) determines the mass and thickness of a film adsorbed onto the surface of an optical sensor. The sensor is a waveguide, and the adsorbed films properties are interrogated by the evanescent wave resulting from reflections from the internal surface of the waveguide. Changes in the resulting interference pattern with a reference waveguide are used to calculate the adsorbed layer thickness, mass and density. Measurements are interpreted using a model which assumes the adsorbed molecules form a layer of uniform thickness and refractive index. The results have been processed assuming a refractive index increment, dn/dc, of 0.20 mL/g. The calculation uses the average of the refractive indices of the solvent, the refractive index of the adsorbed layer and the refractive index increment to calculate the mass concentration (mg/mL) in the adsorbed layer. With the thickness this allows mass adsorbed per unit area to be calculated. Refractive index increments were determined using a refractive index detector (Shodex RI-71, Showa Denko) with solutes dissolved in the running buffer at concentrations between 0 – 2.5 mg/mL. The precision of the measurement technique was checked using sucrose and NaCl solutions and was found to be within 3% of literature values.

**Table 1** The main bile salt abundance in gall bladder bile from Rossi *et al.*<sup>5</sup> and critical micelle concentration (cmc) and aggregation number ( $N_{agg}$ ) from Madenci and Egelhaaf.<sup>6</sup>

Bile salt (all sodium)	Abbreviation	Mol/%	Cmc/mM	$N_{agg}$
Taurocholate	NaTC	10.9	3-18	3-7
Glycocholate	NaGC	25.6	4	9
Taurochenodeoxycholate	NaTCDC	12.8	0.9 - 7	5 – 26
Glycochenodeoxycholate	NaGCDC	25.7	1-2	15
Taurodeoxycholate	NaTDC	4.7	2 - 3	12 - 19
Glycodeoxycholate	NaGDC	11.1	1 - 2	13 – 16

A bile salt adsorption-desorption experiment was performed by first establishing a baseline response in the running buffer flowing at 15  $\mu\text{L}/\text{min}$ , injecting the bile salt solution for 300 s at 15  $\mu\text{L}/\text{min}$  followed by a running buffer rinse for 300 s at 15  $\mu\text{L}/\text{min}$ . This was followed by a 40% w/w ethanol-water cleaning step (120 s, 50  $\mu\text{L}/\text{min}$ ) prior to the next experiment 240 s later.

Colipase-bile salt adsorption-desorption experiments comprised two stages, firstly a series of injections of increasing concentrations of colipase (300 s at 15  $\mu\text{L}/\text{min}$  followed by 300 s at 15  $\mu\text{L}/\text{min}$  buffer rinse) followed by a series of injections of bile salts at increasing concentrations.

Colipase-bile salt coadsorption-desorption experiment comprised three stages: (1) the colipase-bile salt mixture was injected at 15  $\mu\text{L}/\text{min}$  for 300 s, then the flow was stopped and the injection valve closed for 60 s during which time the loop was filled with bile salt solution at the same concentration; (2) the injection valve was opened and the flow restarted at 15  $\mu\text{L}/\text{min}$  for 600 s to rinse the adsorbed layer with bile salt solution; (3) finally the injection valve was closed allowing a 600 s buffer rinse.

### Atomic Force Microscopy (AFM)

The atomic force microscope used was an MFP-3D BIO (Asylum Research, Santa Barbara, CA, USA). Images were acquired in AC mode in air using AC160TS cantilevers (Olympus, Japan) oscillated 10% below their fundamental resonant frequency (typically around 320 kHz). The feedback loop set-point was typically around 8% damping of the free amplitude, to minimise the force exerted on the sample. The scan rate was 1 Hz. The experiments were performed on highly oriented pyrolytic graphite (HOPG) to satisfy the twin requirements of a hydrophobic surface sufficiently flat to allow visualisation of the bile salts at monolayer resolution. Adsorption of

the bile salts onto the HOPG and subsequent rinsing was performed in a sealed flow cell: the HOPG was incubated in bile salt solutions (10 mM in the bis-tris buffer described above) for 8 min at 21  $^{\circ}\text{C}$ , and then the cell was rinsed by passing 7.5 volumes of buffer through, followed by 6 volumes of ultrapure water (18.2  $\text{M}\Omega\text{ cm}$ ). The final rinse was required to eliminate crystallisation of the buffer salts on the surface of the HOPG. The sample was removed from the cell and any excess water tipped off the HOPG surface and left for 30 min to fully dry before imaging.

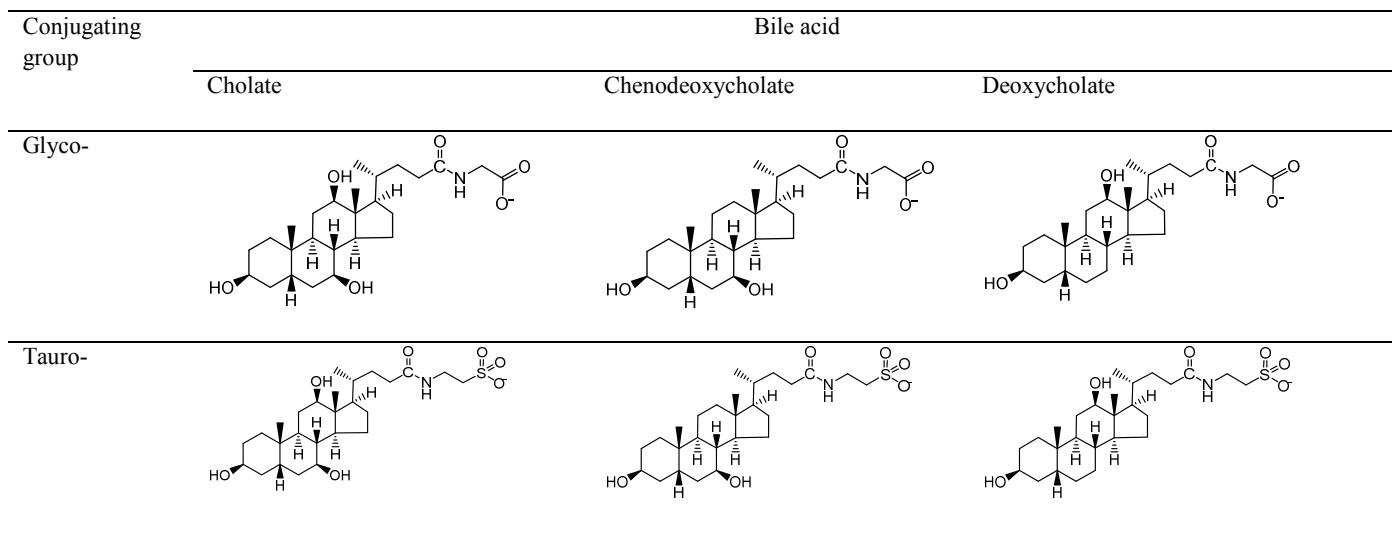
## Results and discussion

### Bile salt adsorption-desorption

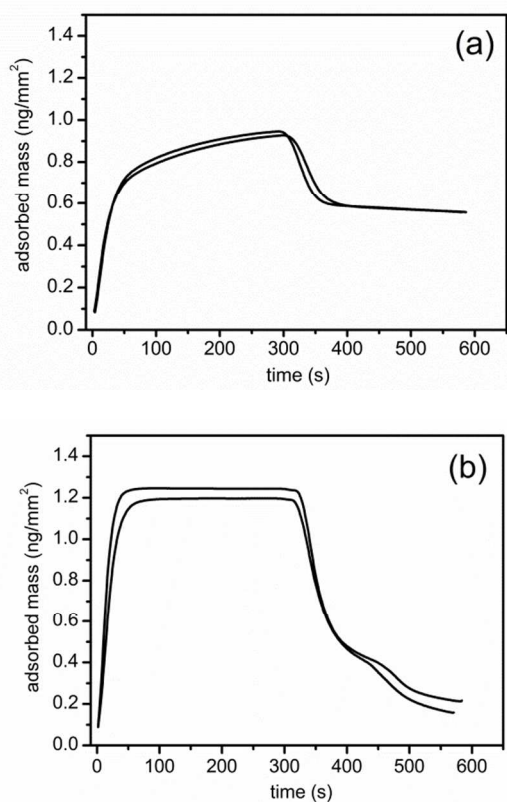
Fig. 2 shows duplicate runs of a adsorption-desorption experiment in which a C18 chip is exposed to 3 mM NaTC (A) and NaGDC (B) solution in standard buffer for 300 s (flow rate 15  $\mu\text{L}/\text{min}$ ) followed by running buffer rinsing for 300 s at the same flow rate before cleaning the chip for the next experiment.

The adsorption of the two bile salts show contrasting behaviour. The measurement cell takes about 70 s to completely exchange with sample at this flow rate. The adsorption of the NaTC continues to increase after complete exchange indicating some slow process within the adsorbed layer which allows increasing adsorption. After the 300 s injection, during the rinsing phase, a proportion of the adsorbed layer desorbs within the cell exchange time but a large proportion of the material is retained on the chip surface. In contrast the NaGDC adsorption is complete within the cell exchange time and the adsorption peak is flat topped indicating that adsorption has reached steady state within the cell exchange time. In the rinsing phase over 80% of the adsorbed NaGDC is lost indicating the adsorption is largely reversible over this timescale.

**Fig. 1** Bile salt structures

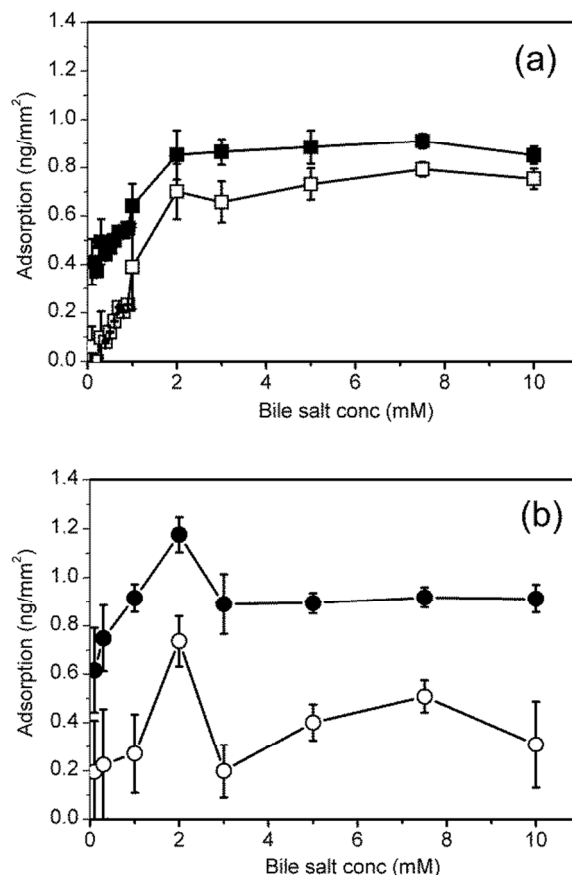


The hydroxyls are at positions 3 (on left), 7 (bottom right) and 12 (uppermost) on the bile acid



**Fig. 2** Adsorption-desorption of bile salts on a C18 surface measured with a dual polarisation interferometer. Bile salts: (a) NaTC; (b) NaGDC; concentration, 3 mM; pH, 7.0; buffer: 2 mM bis-tris 150 mM NaCl, 10 mM CaCl<sub>2</sub>; flow rate, 15  $\mu$ L/min; temperature, 37.0  $^{\circ}$ C; duplicate measurements.

The adsorption-desorption processes were investigated over a wider range of bile salt concentrations from 0.1 mM to 10 mM. Fig. 3 shows the mass adsorbed after 300 s adsorption and after 300 s rinsing for (a) NaTC and (b) NaGDC. The onset of the NaTC adsorption irreversibility is at low concentration at about 0.2 – 0.3 mM and occurs up to the highest concentration studied. The more reversible adsorption of the NaGDC was observed throughout the concentration range with the exception of the 2 mM solution. This solution showed a higher level of adsorption, a sustained increase in adsorption similar to that exhibited by NaTC in Figure 2(a) and was not wholly removed by the standard 40% w/w ethanol-water rinse. However on increasing the NaGDC concentration to 3 mM more reversible behaviour was again observed. The lack of complete desorption was an unexpected result, as soluble, micelle forming surfactants are normally expected to fully desorb from surfaces following a rinsing step.<sup>13-15</sup> This is because, as the subphase is rinsed, the surfactant concentration drops below the cmc and the surfactant will begin to desorb to maintain equilibrium with the bulk solution, until all the solute is removed and the surfactant completely desorbs.<sup>16</sup> Only polymeric surfactants such as proteins will irreversibly adsorb to surfaces, with only limited desorption following rinsing.<sup>14, 15, 17</sup>



**Fig. 3** Bile salt adsorption isotherms on a C18 surface. Bile salts: (a) NaTC; (b) NaGDC. Filled symbols represent the amount adsorbed at end of the adsorption step; open symbols represent the amount adsorbed at the end of the rinsing step.

Duan *et al.* recently reported the results of a study of the adsorption-desorption behaviour of the sodium dodecyl sulphate (SDS) using dual polarisation interferometry.<sup>18</sup> The variation of mass adsorbed with surfactant concentration has the same qualitative features as NaGDC (Fig. 3(b)). In both cases the peak in adsorption is close to the critical micelle concentration. The Duan *et al.* study includes a detailed description of the form of the adsorption behaviour both above and below the cmc. For the compositions above the cmc there is a rapid adsorption phase followed by a plateau, as in Fig. 2 (b). This indicates that the micellar structure in the bulk is having an influence on the adsorption process. Similarly the initial rapid desorption of NaGDC (Fig. 2(b)) may be due to the transient shedding of micelles as the surface is rinsed with bile-free buffer. At bulk concentrations in a range below the cmc SDS adsorbs on hydrophobic surfaces and forms hemimicelles.<sup>18</sup> In this concentration range the SDS adsorption behaviour is similar to Fig 2 (a), NaTC, with a slow adsorption phase after the initial rapid increase in adsorption suggesting this may be a general type of adsorption behaviour for surfactants below their cmc.

The above studies have used a standard buffer: 2 mM pH 7.0 bis-tris with 150 mM NaCl and 10 mM CaCl<sub>2</sub> and two representative bile salts. In order to examine the effects of molecular structure and calcium level all six bile salts (Table 1) were tested at three levels of calcium i.e. 0 mM, 1 mM and 10 mM. The variation of the phase angle measured with transverse magnetic polarized light on channel 1 of the sensor chip is shown in Fig. 4 with results of the three calcium concentrations superimposed for a bile salt concentration of 3 mM.

Fig. 4 shows that the mode of adsorption-desorption is dependent upon the bile acid (the unconjugated part of the bile salt) i.e. both the taurocholate and glycocholate show high retention on rinsing with running buffer. In contrast both deoxycholates showed essentially reversible behaviour and the chenodeoxycholates showed intermediate behaviour with the taurine conjugate showing retention while the glycine conjugate show reversibility. This is an interesting observation, since a major difference in structure, namely the conjugation with either taurine or glycine has little effect on adsorption-desorption behaviour, whilst minor structural changes in the main part of the structure have a much bigger impact on behaviour. For example the difference between the cholate and deoxycholate forms is a single hydroxyl at position 7 (Fig. 1). Nevertheless, this small change tends to lead to a lower cmc and higher aggregation number in the deoxycholate forms (Table 1)<sup>6</sup> which could also influence the interaction with the interface, and any surface aggregation which may occur.

It appears that, in these experiments, the essential surface active character of the bile salts is determined by the bile acid portion of the conjugate. As the bile acids are facial amphiphiles with the opposite faces of the planar steroidal fused ring structure being hydrophilic and hydrophobic, these intimately-linked portions of the structure are able to dominate behaviour. The polar/ionic taurine and glycine conjugating groups are attached through a flexible four carbon chain meaning they are separated from the main amphiphilic group. At pH 7.0 and 150 mM NaCl we anticipate glycine will be

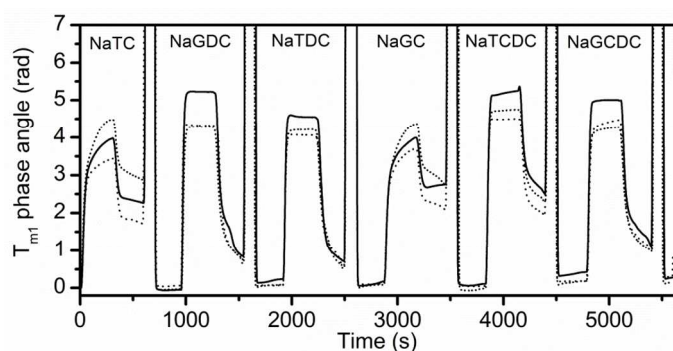
fully charged as will the strongly acidic taurine though ionic interactions will be screened by the salt. These conjugating groups serve to increase the aqueous solubility of the bile salts but do so in a similar way so maintaining the dominant role of the bile acid group.

The rates of adsorption and desorption are quantified at the midpoint of the injection and the rinse for the adsorption-desorption experiment with the bile salts containing 10 mM CaCl<sub>2</sub> in Table 2. This clearly demonstrates the range of behaviour. At this time point the cholates have finite on-rates and conversely zero off-rates whereas the deoxycholates have zero on-rates and finite off-rates. The chenodeoxycholates are most similar to the deoxycholates though they have finite but small on-rates. In summary there is a correlation between the sustained adsorption (finite on-rates) and slow desorption (zero off-rates).

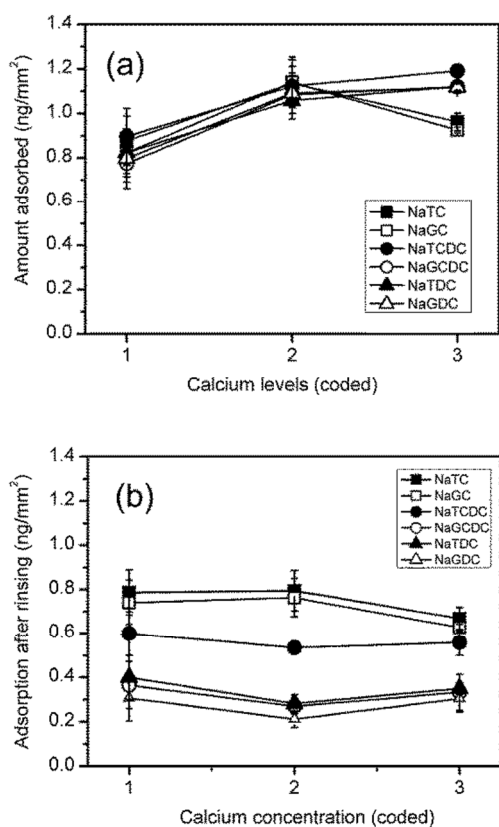
**Table 2** Bile salt on- and off-rates at midpoint of injection (150 s) and rinse (450 s). Standard conditions and 10 mM CaCl<sub>2</sub>

Bile salt	dm/dt (10 <sup>-6</sup> ng/mm <sup>2</sup> s <sup>-1</sup> )	
	On-rate	Off-rate
NaTC	1160 ± 150	-250 ± 210
NaGC	1140 ± 140	-150 ± 220
NaTCDC	100 ± 90	-3000 ± 2000
NaGCDC	240 ± 40	-1600 ± 420
NaTDC	-80 ± 70	-2600 ± 600
NaGDC	-20 ± 100	-2200 ± 340

Quantitative data showing the effects of calcium on bile salt adsorption and retention after buffer rinsing is shown in Fig. 5(a) and (b), respectively. Initial addition of calcium to 1 mM results in a 25 – 40% increase in bile salt adsorption. A further increase in calcium to 10 mM results in a decrease in adsorption for the two cholates resulting in a net increase of about 10% as compared with the calcium free buffer. The adsorption of the other bile salts is little altered at the highest calcium concentration.



**Fig. 4** Phase angle variation for transverse magnetic component of light during sequential injection of six different bile salts (3 mM). Each bile salt adsorption experiment is terminated by a 2 min ethanol-water cleaning injection (40% w/w)(signal offscale). Standard buffer with varying calcium chloride concentration (solid line, 0 mM; dashed line, 1 mM; dotted line, 10 mM)



**Fig. 5** Effect of calcium concentration of bile salt adsorption on a C18 surface. (a) Adsorption at end of adsorption step (300 s); (b) Adsorption at end of buffer rinsing step. Calcium concentrations (coding): 1, 0 mM; 2, 1 mM; 3, 10 mM. Bile salts: ■, NaTC; □, NaGC; ●, NaTDC; ○, NaGDC; ▲, NaTDC; △, NaGDC.

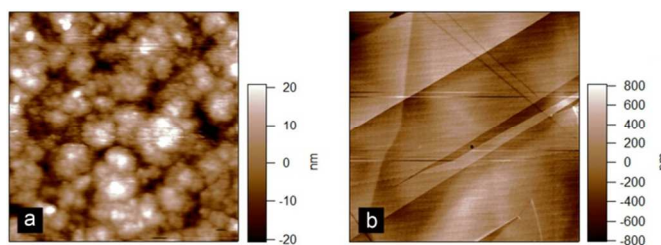
The effects of calcium level on the levels of adsorption after rinsing are relatively small. The initial addition of calcium results in a 25 – 30% reduction in the amount adsorbed for NaGDC, NaTDC and NaGC. At the highest concentration of 10 mM calcium the largest net effect is for NaTC and NaGC which are about 15% lower than their calcium free values.

Therefore, for the bile salts alone, there is a fundamental difference in the adsorption – desorption behaviour of the different bile salts, controlled mainly by the structure of the unconjugated part of the molecule. Even for the bile salts that appear to desorb more readily (i.e. NaTDC, NaGDC, NaGDC), there is still a significant amount of adsorbed material remaining after rinsing compared to studies with more conventional surfactants.<sup>13, 14</sup> This suggests that the overall structure of the bile salts is affecting the rate and extent of desorption. Bile salts differ in their structure to a conventional hydrocarbon based surfactant which have a hydrocarbon, aliphatic chains and a polar headgroup whereas bile salt molecules possess a planar steroidal fused-ring structure with hydrophobic and a hydrophilic faces. This means that the adsorption, orientation and molecular interactions at interfaces will be completely different between the two classes of surface active molecule.

In order to try and elucidate the mechanism underpinning the adsorption-desorption behaviour of the bile salts AFM imaging was used. Imaging the C18 modified silica surfaces used for the DPI measurements showed they were relatively rough (rms roughness approximately 9 nm) at the molecular length scale which would make it difficult to resolve adsorbed bile salts on its surface (Fig. 6 (a)). Highly oriented pyrolytic graphite (Fig. 6 (b)) offers a hydrophobic and atomically flat surface with an rms roughness of approximately 0.25 nm as compared with the bile salts which have approximate longest dimension 2 nm and thickness 0.5 nm.<sup>19</sup> Comparing the images note that graphite colour scale ranges from -800 to 800 pM (Fig. 6 (b)) whereas that on the DPI chip (Fig. 6 (a)) ranges from -20 to 20 nm, a factor of 40 greater. Furthermore the surface of the DPI chip varies continuously in the x and y directions whereas the graphite has areas which are relatively smooth separated by clearly defined steps. AFM images of NaTC and NaGDC adsorbed to a graphite surface were obtained after buffer rinsing.

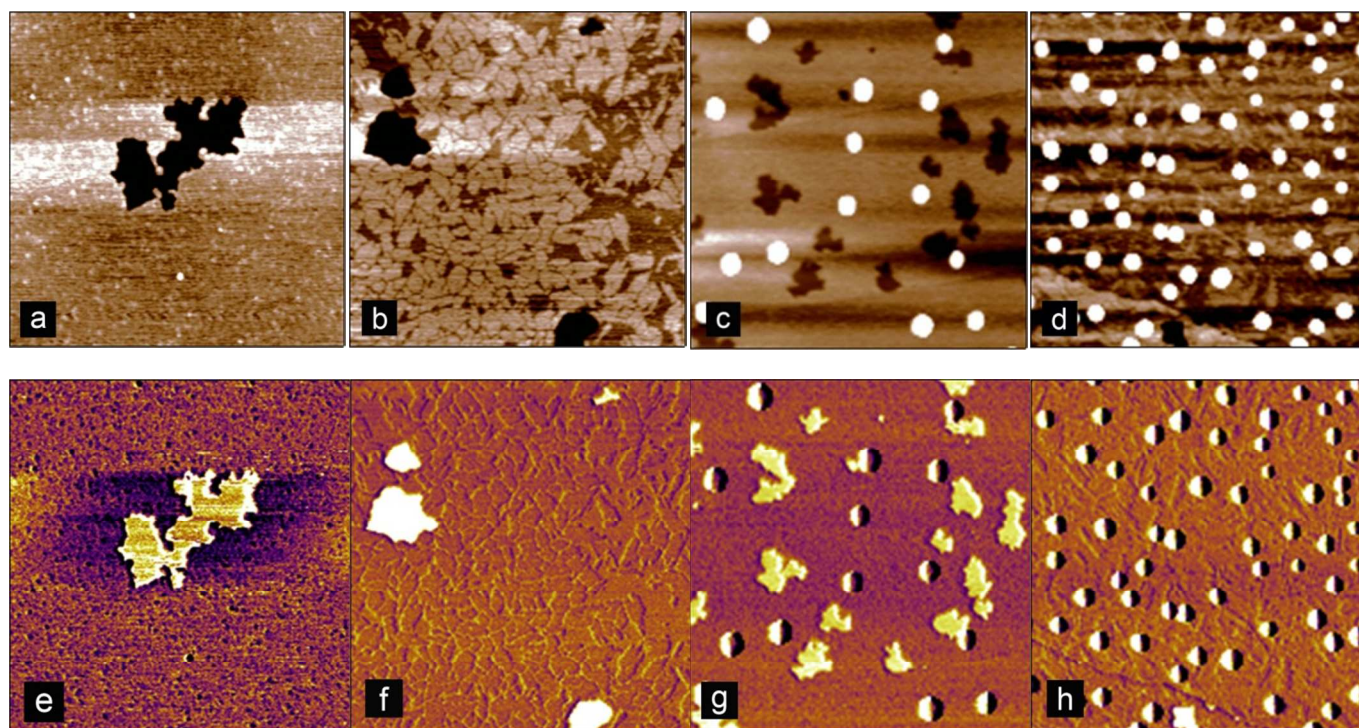
Fig. 7 shows some typical images obtained from numerous scans from several separate adsorption experiments. Fig. 7 (a) and (b) show NaTC and NaGDC respectively, following adsorption and rinsing. Occasional holes were found in the film (black areas) which allowed measurement of the film thickness. NaTC films were approximately 2 nm thick, and formed a continuous film with a granular texture (granule diameter about 0.5 nm), between any holes or defects. The granular structure is also evident around the edge of the hole. In contrast, NaGDC formed a more coarsely structured film, forming small “sheets” of about 100 nm across, and 0.8 nm thick. The sheets were arranged in layers, of mainly one or two sheets, but sometimes three sheets in thickness. Certainly, the NaGDC adsorbed appeared to have been more disrupted by the rinsing / desorption step. These observations have to be taken into context, as the adsorption was onto a very different surface than the DPI measurements. Nevertheless, significant differences in the morphology of the adsorbed films were observed.

In addition, on certain regions of the substrate, micelle-like structures were observed for both the NaTC (Fig. 7 (c)) and NaGDC (Fig. 7 (d)). These structures were of similar sizes between the two bile salts and were between 6 and 15 nm in height. There didn't appear to be any significant difference between the two bile salts in regard to the number and appearance of these structures, but it demonstrates that such supramolecular structures occur in these adsorbed-rinsed films.



**Fig. 6** Atomic force images of (a) C18 modified silicon oxide DPI chip and (b) highly oriented pyrolytic graphite. Scan size = 3  $\mu$ m.





**Fig. 7** Atomic force microscopy images of bile salts adsorbed onto HOPG after rinsing in buffer. (a) and (b) show NaTC and NaGDC, respectively. Black regions are holes in the adsorbed layer. (c) and (d) show NaTC and NaGDC respectively, in a region where micelle-like structures were observed. Scan size = 1.2  $\mu\text{m}$  in all images. Height ranges: (a) 1.2 nm; (b) 1.6 nm; (c) 4.0 nm; (d) 1.5 nm. Figs (e) – (h) are the corresponding phase images.

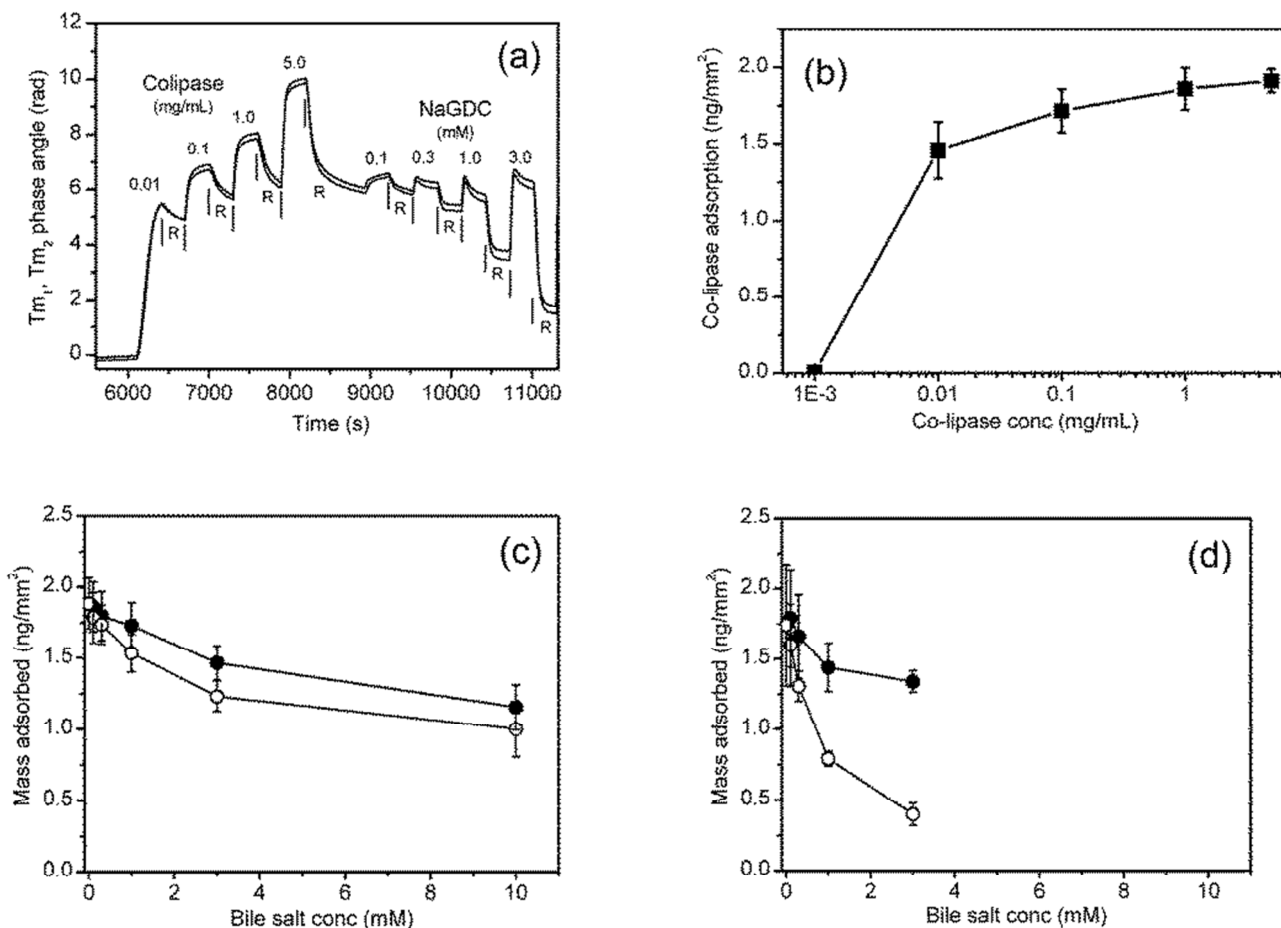
#### Bile salt-colipase adsorption-desorption on a C18 chip.

In the human small intestine bile salts interact with pancreatic lipase and colipase to digest triglyceride emulsions. Here these bile-protein interactions are examined using the cofactor colipase, which has long been known to bind to bile salts.<sup>7</sup> Before describing coadsorption experiments the results of a sequential adsorption experiment in which increasing amounts of colipase are first adsorbed onto the C18 chip followed by rinsing with increasing concentrations of bile salts are described.

Fig. 8 (a) shows the raw data from the DPI for the transverse magnetic signal. In the first half of the experiment the C18 chip is exposed to increasing concentrations of colipase. Comparing the shape of the adsorption peaks between Fig. 8 (a) (colipase) and Fig. 4 (bile salts) shows that, at the lowest colipase concentration (0.01 mg/ml) the adsorption process is relatively slow and, from the buffer rinsing, largely irreversible. At higher colipase concentrations (0.1 – 5 mg/mL) the signal increase slows after the first 60 s (about the cell exchange time) indicating that adsorption is relatively rapid and close to steady state. Fig. 8 (b) shows the adsorption of colipase onto the C18 functionalised chip in the absence of any bile salts. The adsorption at the end of the adsorption phase is plotted prior to buffer rinsing. At the highest concentration studied (5 mg/mL) the adsorption is approaching a constant value of about 1.9  $\text{ng}/\text{mm}^2$ , the mean optical thickness was 2.6 nm and concentration 0.74  $\text{g}/\text{mL}$ .

The adsorption increases strongly between 1 and 10  $\mu\text{g}/\text{mL}$  reaching 76% of its final value at 10  $\mu\text{g}/\text{mL}$ .

In the second half of the experiment (Fig. 8 (a)) the adsorbed colipase layer is rinsed with increasing concentrations of bile salts. The profile of the adsorption peak changes at 0.3 mM NaGDC indicative of a desorption process occurring during the adsorption phase once the cell is fully exchanged. This effect is more pronounced in the 1.0 mM and 3.0 mM NaGDC injections. However the largest reductions in adsorbed mass occurs during the buffer rinsing i.e. the rinsing of the mixed colipase-NaGDC layer with running buffer results in extensive desorption from the chip surface. The results of the rinsing experiments are summarised in Figs. 8 (c) for NaTC and (d) for NaGDC. The bile salt rinsing of the adsorbed colipase layer reflects the differences in the bile salts observed in Figs. 2 – 5. The amounts adsorbed after buffer rinsing can be compared quantitatively at 3 mM. In the case of the pure bile salts (Figs 3 (a) and (b)) the amounts adsorbed after buffer rinsing (3 mM bile, 10 mM  $\text{CaCl}_2$ ) are 0.66 and 0.29  $\text{ng}/\text{mm}^2$  for NaTC and NaGDC, respectively, whereas for the mixed colipase-bile layers the amounts adsorbed after buffer rinsing are 1.23 and 0.40  $\text{ng}/\text{mm}^2$ , respectively. That is, with NaTC, the mixed layers retain about 0.6  $\text{ng}/\text{mm}^2$  extra material after buffer rinsing as compared with NaGDC which only retains 0.1  $\text{ng}/\text{mm}^2$  extra material. Therefore, NaGDC is more efficient than NaTC at solubilising colipase from the surface when used in combination with buffer rinsing.



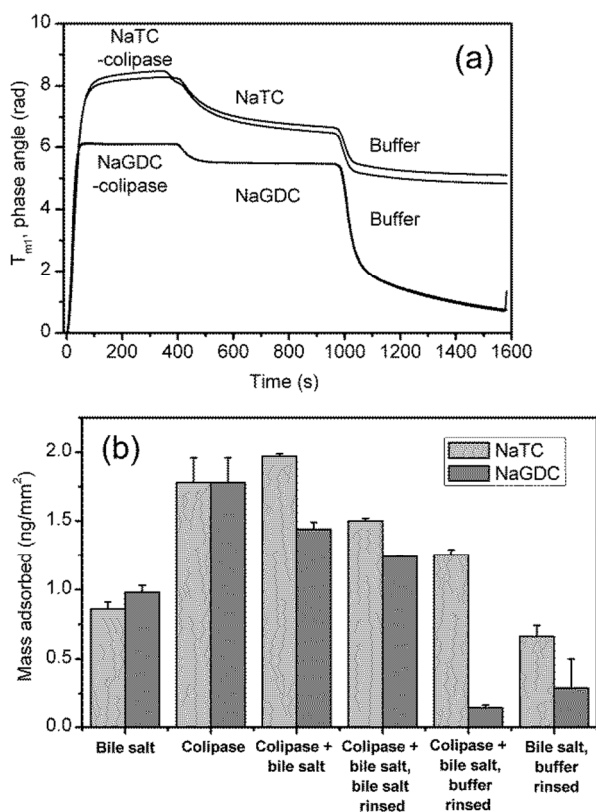
**Fig. 9** Colipase adsorption and subsequent bile salt rinsing on C18 DPI chip. Raw data (a). The colipase is dissolved in 2 mM pH 7.0 bis-tris buffer containing 150 mM NaCl and 10 mM CaCl<sub>2</sub>. The bile salt rinsing is achieved with a series of 300 s injections of increasing concentration each separated by 300 s rinsing with the running buffer all at a flowrate of 15  $\mu$ L/min. Colipase adsorption at the end of each adsorption step (b). Mass adsorbed on rinsing with bile salts: (c) NaTC; (d) NaGDC. Filled symbol denote the mass at end of bile rinsing step and open symbol the mass at the end of the buffer rinsing step.

However, in order to more closely reflect the processes in the human small intestine, it is necessary to study the coadsorption of colipase and bile salts and the effect of rinsing with bile salts rather than running buffer. Results from experiments to investigate this are shown in Fig. 9. Figs. 9 (a) and (b) show the combined adsorption of colipase and bile salt is greater for NaTC than for NaGDC and, while there are greater losses in adsorption for the NaTC on rinsing with the bile salt solution, a difference of 20% is maintained. Fig. 9 (b) summarises the quantitative adsorption data including separate bile salt and colipase adsorption for comparison. The coadsorption experiment shows that the colipase and bile salts coadsorb but the extent of adsorption while greater than just bile salt is similar to the amount of adsorption for colipase. However, the coadsorption with NaTC is significantly greater than the coadsorption with NaGDC.

## Discussion

Studies of the self-association properties of bile salts have shown that they have a range of behaviours in terms of critical micelle concentrations and aggregation numbers (Table 1). The present study shows that the individual bile salts have contrasting adsorption-desorption behaviour on C18-functionalised hydrophobic surfaces. Broadly the behaviour of the bile salts split into two groups, those which have largely reversible adsorption behaviour (NaGDC, NaTDC and NaGCDC) and those which show a significant degree of irreversibility (NaTC, NaGC and NaGCDC). This grouping correlates with the self-association behaviour i.e. the reversibly adsorbed NaGDC, NaTDC and NaGCDC have the lower cmc's and larger aggregation numbers whereas the irreversibly adsorbed NaTC, NaGC and NaGCDC have higher cmc's and tend to aggregate into smaller micelles. This behaviour is finely tuned by the

structure of the component bile acid, as they only differ by a single hydroxyl



**Fig. 9** Bile salt-colipase coadsorption, bile salt rinsing and buffer rinsing on C18 functionalised chip measured with DPI. Bile salt concentration, 3 mM; co-lipase concentration, 0.1 mg/mL; buffer 2 mM pH 7.0 bis-tris with 150 mM NaCl and 10 mM CaCl<sub>2</sub>. B. Results summary including bile adsorption (Fig. 3) and colipase adsorption (Fig. 6 (a)).

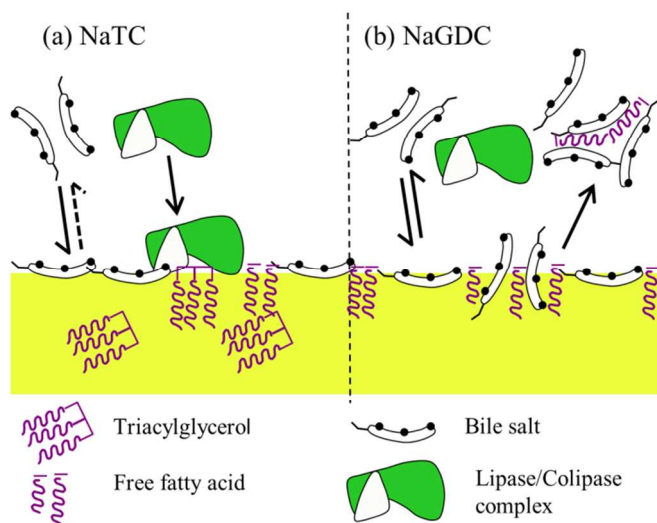
groups (Fig. 1) on C12 for the chenodeoxycholate and on C7 for the deoxycholate. Furthermore this behaviour is insensitive to calcium levels which vary with dietary intake (Fig. 5). Although we refer to the adsorption behaviours as reversible or irreversible, as pointed out earlier, compared to freely soluble surfactants, even the reversible bile salts still have a proportion of the adsorbed fraction which remained adsorbed after rinsing. This was particularly noticeable at around 2mM (Fig. 3 (b)). However, the duration of these experiments is quite short (though physiologically relevant), and it can be clearly seen from Fig. 5, that the desorption of NaGDC, NaTDC and NaGCDC is still continuing and persists to long times (3000 s, data not shown). Nevertheless, there is clearly a difference in the adsorption/desorption behaviour between the two sets of bile salts, with the bile salts which are slower to adsorb having a greater proportion of irreversibly adsorbed material. The correlation with the aggregation behaviour may suggest that aggregation / dissociation process of the bile salt “micelles”. It was hoped that imaging the structure of the interfaces occupied by the bile salts may reveal whether they were in the form of

aggregates at the interface. Fig. 6 showed that although the amount of adsorbed material appeared to be similar between the two bile salts, there were clear differences between the two in terms of the morphology. NaTC appeared to form an “amorphous” structure at the surface, with occasional holes, and evidence of adsorbed micelle-like structures. NaGDC though seemed to form more ordered, layered structures. It was not possible to image the bile salts on the DPI chip surface, as it was too rough. Although the HOPG graphite is hydrophobic, the surface chemistry is quite different. Nevertheless, the images shown in Fig. 6 clearly shows that there was a difference in the adsorbed layer morphology between the two bile salts studied, which might help explain the differences in the adsorption-desorption behaviour.

In order to start to investigate whether these contrasting behaviours relate to physiological situations the interaction of these bile salts with colipase was also investigated. The reasoning behind this was based on the fact that bile salts are necessary to remove insoluble lipolysis products (monoacylglycerol, free fatty acid) from the interface. This is because the accumulation of lipolysis product at the interface inhibits lipase activity, as the enzyme can no longer access the substrate<sup>3, 20</sup>. Removal of the product thus allows lipase access to the interface, however, the surface activity of the bile salts also inhibits the lipase. Therefore the cofactor colipase is present to facilitate the adsorption of lipase, and hence its activity, in the presence of bile salts. Colipase appears to interact with each of the other components: interface, lipase and bile. It is thought that it interacts with bile salts to aid adsorption of colipase to the interface. In turn, it binds strongly to lipase through its C-terminal which results in the complex having a sufficiently large hydrophobic footprint to remain adsorbed at the interface even in the presence of bile salts<sup>8, 21</sup>. Furthermore, colipase binding also appears to stabilise the lipase “lid” conformation in the open position<sup>8, 21</sup>, exposing the active site.

The present experiments show the interactions of three of the species present i.e. interface, bile salts and colipase. Fig. 9(b) summarises the adsorption data of species when they are adsorbed singly or simultaneously. The species and their interactions are shown schematically in Fig. 10. A comparison of the simultaneous adsorption of colipase and a bile salt with the adsorption of a bile salt alone confirms that colipase can adsorb extensively in the presence of bile salts, thus supporting the idea of a cooperative adsorption process. However, the cooperativity appears to be greater for NaTC, than for NaGDC. Furthermore the results for the effect of buffer rinsing of the coadsorbed layer show that the colipase adsorption is largely irreversible in the presence of NaTC which is consistent with its role during lipolysis. Yet in the presence of NaGDC, there has been significant desorption of both bile salt and colipase. These results support the premise that the differing adsorption/desorption behaviours of the bile salt species could positively influence different phases of the lipolysis process. Specifically, NaTC-like behaviour would promote the adsorption and residence time of the colipase-lipase complex, and bile salts behaving like NaGDC would favour the displacement and

solubilisation of lipolytic products from the interfacial region into the micellar phase.



**Fig. 10** Diagrammatic representation of the proposed action of bile salts. (a) NaTC adsorbs strongly, but only partially desorbs, leading to a longer residence time at the interface which facilitates the adsorption of lipase/colipase to the lipid surface, thus promoting lipolysis. In contrast, NaGDC (b) exchanges readily with the interface, which reduces the residence time at the interface, this may decrease adsorption but increase turnover of lipase/colipase. This behaviour may also facilitate the displacement of lipolytic products and their incorporation into mixed micelles.

The C18 functionalised surfaces represent a simplified model of a fat droplet surface with a layer of tethered 18 carbon alkyl chains. While the model provides hydrophobic chains to interact with the bile salts other details of a fat droplet undergoing lipolysis are absent e.g. the glycerol and carboxylic acid head groups of the triacylglycerols, monoacylglycerols and fatty acids. These species add to the complexity of the system both in terms of the molecular interactions (polar and charge) and in terms of the insoluble phases which they form. The approaches used in the present study rely on techniques employing solid-liquid interfaces which complement studies on the more complex hydrolysing liquid-liquid emulsion systems.

The results of the buffer rinsing of the coadsorbed layer are most relevant to conditions lower down the gastrointestinal tract. As part of the enterohepatic circulation almost all the bile salts are absorbed from the intestinal lumen and so their concentration will fall to low levels. Under these conditions while NaTC will tend remain adsorbed to hydrophobic interfaces the NaGDC will be released. However it is known that the colonic flora both deconjugate and dehydroxylate the bile salts, that is, they are biotransformed into other species low in the gastrointestinal tract. Therefore the ability of the bile salt species to remain adsorbed to surfaces may affect the bile salt population exposed to the colonic microflora.

## Conclusions

Differences in the adsorption behaviour to solid surfaces between different bile salt species were observed. Specifically, the cholates adsorbed more slowly and a significant proportion were irreversibly adsorbed following buffer rinsing. Whereas the deoxycholates and chenodeoxycholates adsorbed more rapidly and desorbed to a greater extent following buffer rinsing. AFM showed that the interfacial structures that remained following buffer rinsing were also different between these two groups. In addition, the adsorption desorption behaviour affected the adsorption of colipase to a solid surface. This supports the idea that cooperative adsorption occurs between certain bile salts and colipase to facilitate the adsorption and activity of pancreatic lipase in order to restore lipolytic activity in the presence of bile salts. Further work is required to understand how these subtle differences in bile salt structure affect lipase activity and solubilisation of lipolysis products and other lipid-soluble bioactive molecules.

## Acknowledgements

The authors would like to thank the BBSRC for their support through Institute Strategic Programme Grant – Food and Health at the Institute of Food Research, Norwich.

## Notes and references

<sup>a</sup> Institute of Food Research, Norwich Research Park, Colney, Norwich, NR4 7UA, UK. Corresponding author email: roger.parker@ifr.ac.uk

- H. I. Friedman and B. Nylund, *American Journal of Clinical Nutrition*, 1980, **33**, 1108-1139.
- P. Reis, H. Watzke, M. Leser, K. Holmberg and R. Miller, *Biophys. Chem.*, 2010, **147**, 93-103.
- P. J. Wilde, in *Encyclopedia of Human Biology*, Elsevier, 3rd edn., 2015, pp. 1-7.
- C. Lentner, ed., *Geigy Scientific Tables* 8th edn., Ciba-Geigy, 1981.
- S. S. Rossi, J. L. Converse and A. F. Hofmann, *Journal of Lipid Research*, 1987, **28**, 589-595.
- D. Madenci and S. U. Egelhaaf, *Current Opinion in Colloid & Interface Science*, 2010, **15**, 109-115.
- B. Borgstrom, C. Erlansonalbertsson and T. Wieloch, *J. Lipid Res.*, 1979, **20**, 805-816.
- M. E. Lowe, *Annual Review of Nutrition*, 1997, **17**, 141-158.
- M. P. Egloff, F. Marguet, G. Buono, R. Verger, C. Cambillau and H. Vantilbeurgh, *Biochemistry*, 1995, **34**, 2751-2762.
- M. P. Egloff, L. Sarda, R. Verger, C. Cambillau and H. Vantilbeurgh, *Protein Science*, 1995, **4**, 44-57.
- J. N. Breg, L. Sarda, P. J. Cozzone, N. Rugani, R. Boelens and R. Kaptein, *European Journal of Biochemistry*, 1995, **227**, 663-672.
- D. C. Whitcomb and M. E. Lowe, *Digestive Diseases and Sciences*, 2007, **52**, 1-17.
- D. A. Woods, J. Petkov and C. D. Bain, *Journal of Physical Chemistry B*, 2011, **115**, 7353-7363.
- V. B. Fainerman, M. E. Leser, M. Michel, E. H. Lucassen-Reynders and R. Miller, *Journal of Physical Chemistry B*, 2005, **109**, 9672-9677.
- T. F. Svitova, M. J. Wetherbee and C. J. Radke, *J. Colloid Interface Sci.*, 2003, **261**, 170-179.

- 16 J. Brinck, B. Jonsson and F. Tiberg, *Langmuir*, 1998, **14**, 5863-5876.
- 17 A. Ash, M. J. Ridout, R. Parker, A. R. Mackie, G. R. Burnett and P. J. Wilde, *Colloids and surfaces. B, Biointerfaces*, 2013, **102**, 546-553.
- 18 M. Duan, H. Wang, S. Fang and Y. Liang, *Journal of Colloid and Interface Science*, 2014, **417**, 285-292.
- 19 A. R. Campanelli, S. C. Desantis, A. A. Darchivio, E. Giglio and L. Scaramuzza, *Journal of Inclusion Phenomena and Molecular Recognition in Chemistry*, 1991, **11**, 247-256.
- 20 P. J. Wilde and B. S. Chu, *Advances in Colloid and Interface Science*, 2011, **165**, 14-22.
- 21 F. Carriere, C. Withers-Martinez, H. van Tilberugh, A. Roussel, C. Cambillau and R. Verger, *Biochimica Et Biophysica Acta-Reviews on Biomembranes*, 1998, **1376**, 417-432.