

RSC Advances



This is an *Accepted Manuscript*, which has been through the Royal Society of Chemistry peer review process and has been accepted for publication.

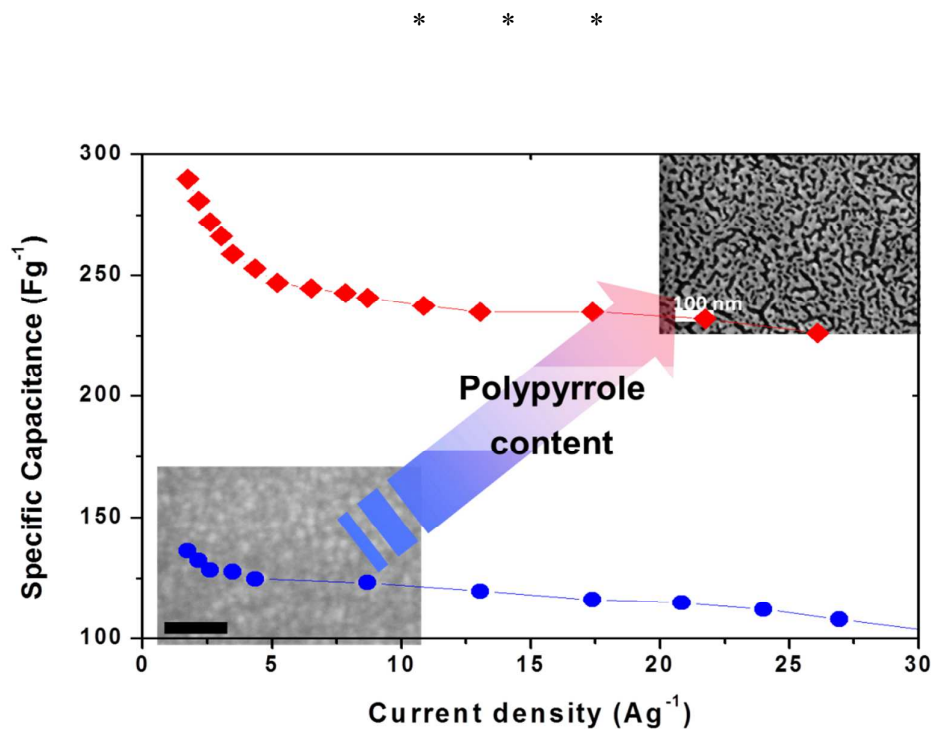
Accepted Manuscripts are published online shortly after acceptance, before technical editing, formatting and proof reading. Using this free service, authors can make their results available to the community, in citable form, before we publish the edited article. This *Accepted Manuscript* will be replaced by the edited, formatted and paginated article as soon as this is available.

You can find more information about *Accepted Manuscripts* in the [Information for Authors](#).

Please note that technical editing may introduce minor changes to the text and/or graphics, which may alter content. The journal's standard [Terms & Conditions](#) and the [Ethical guidelines](#) still apply. In no event shall the Royal Society of Chemistry be held responsible for any errors or omissions in this *Accepted Manuscript* or any consequences arising from the use of any information it contains.

Laponite/polypyrrole nanocomposite electrodes for energy storage applications

Mohamed Fatnassi and Mohammed Es-Souni*



A one-pot synthesis of nanocomposites of clay nanomaterial laponite and polypyrrole conductive polymer using aqueous solutions and drying temperatures below 100°C leads to film formation with nanoscale phase separation that results in clay nanodomains interconnected with meandering polypyrrole. The films can be used as electrodes for supercapacitor applications with specific capacitance of up to 350 Fg^{-1} , approaching that of plain polypyrrole, but with the advantages of low cost and higher mechanical and electrochemical robustness,

ARTICLE

Nanoscale Phase Separation in Laponite/Polypyrrole Nanocomposites. Application to Electrodes for Energy Storage

Cite this: DOI: 10.1039/x0xx00000x

Mohamed Fatnassi, and Mohammed Es-Souni*

Received 00th January 2012,
Accepted 00th January 2012

DOI: 10.1039/x0xx00000x

www.rsc.org/

Nanocomposites of the smectite clay nanomaterial laponite and the conductive polymer polypyrrole are processed from aqueous solutions using dip-coating of a substrate. With increasing polypyrrole content from 2 to 20% evidence of phase separation at the nanoscale is obtained. Based on morphology observation polypyrrole is thought to graft on laponite face thus serving to glue the laponite coins face-to-face with excess polymer being rejected to the interface between the laponite nanodomains. This results in interconnecting polypyrrole nanodomains that meander throughout film thickness towards substrate surface. This particular nanocomposite structure is explored for supercapacitor applications because of its high surface area and the interconnecting conductive polymer phase. Supercapacitor electrodes with specific capacitances of up to 360F/g, high retention rate and long-term durability are obtained. The main advantage of these new electrodes lies in their high materials efficiency because the clay material acts as support for the active polymer component that may be down-scaled to 10% with little trade-off on properties. Because processing can be achieved in aqueous solutions and temperatures below 100°C are sufficient to cure the films the electrodes are environmentally friendly and have low carbon foot-print.

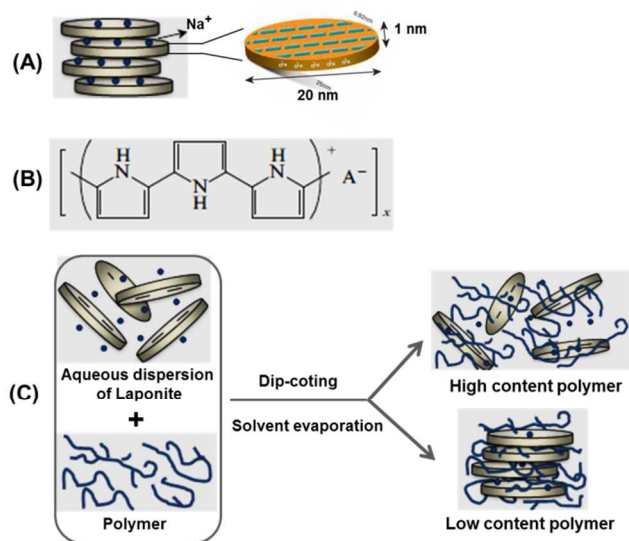
Introduction

Polymer-clay nanocomposites based on the assembly of polymers and layered nano-sized clays have received considerable worldwide attention over the last twenty years.¹ In such materials, the synergistic interaction between the organic and inorganic phases may give rise to materials with new texture and properties that are not present in the individual pristine parts. The polymer-clays interaction at nanoscale is mainly promoted by the high interfacial area between them, leading to composite materials with enhanced properties such as increased mechanical properties, improved thermal stability, scratch and damage resistance.

Clays play an important role in industrial processes,² and more recently they have emerged as promising high-tech nanomaterials for drug delivery,^{3,4} catalyst and catalyst supports,⁵⁻⁷ soil and water waste purification,⁸ and as additives to polymeric materials to tune their physical properties.⁹ The proclivity of clays to malleability, both at the macroscopic and molecular level, originates from their layered silicate structure that is common to all clay types. Clays are abundant in nature, and are low-cost versatile materials with a large spectrum of

properties that make them very attractive from the technological-industrial and research viewpoints. The family of clay materials encompasses seven groups depending on their chemistry, structure and net charge. In the following the so-called smectite group will be introduced with emphasis on laponite nanomaterial that constitutes one of the components in the present study. Laponite a is synthetic smectic clay with the general formula $\text{Na}^{+}_{0.7}[(\text{Si}_8\text{Mg}_{5.5}\text{Li}_{0.3})\text{O}_{20}(\text{OH})_4]^{-0.7}$; its structure, displayed in Scheme 1, consists of parallel sheets of tetrahedrally coordinated silica and octahedrally coordinated magnesium oxide sandwiched between them.¹⁰ A fraction of divalent magnesium is substituted by monovalent Li which results in a net negative charge on the surface; Na^{+} ions in the interlayer structure ensure the electrostatic cohesion of the layered structure. Laponite is available as nanosized particles in nearly monodisperse quality (Laponite RD[®]). The cylindrical nanoparticles resemble flat coins with a diameter of approximately 25 nm and 1 nm thickness (Scheme 1). Laponite is easily modified by intercalating molecules such as silanes to generate additional properties such as hydrophobicity and affinity for adsorbents,^{11,12} eventually the intercalated

molecules can expand the layered structure to such a degree that exfoliation occurs (separation of the individual layers) subsequently yielding functionalized leaflets with high surface area.



Scheme 1. (A) Schematic structure of synthetic laponite clay; (B) oxidized state of polypyrrole; (C) different types of nanocomposites formed by combining polymer and clay particles.

The second component in our nanocomposite is Polypyrrole (PPy), a well-known conjugated polymer that is conductive in the doped, oxidized state schematically shown in Scheme 1. This conductive polymer has attracted tremendous interest because of its wide range of applications spanning electrodes for lithium ion batteries to microactuators.^{13,14} PPy is available in different conducting grades, is dispersible in water and can be processed as thin film via spin or dip-coating;¹⁴ films can also be processed by electro-polymerization but this is beyond the scope of the present paper. The electrochemical behaviour of PPy has been extensively studied in different types of electrolytes, and it has been shown that faradaic processes consisting of a reversible redox reaction dominate the current-voltage (CV) characteristics with a specific capacity of up to 400 F/g in aqueous electrolytes.¹³

Nanocomposites of laponite and polymers have received considerable attention, but mostly focussing on mechanical properties. In particular it has been shown that laponite was effective in improving the stiffness of elastomeric polymers.⁹

The present paper extends our preliminary note¹⁵ that focused on the use of laponite as active electrode material for electrochemical double layer capacitors. The specific capacitance of these laponite film electrodes were even further boosted by intercalating an organo-silane.¹⁵ Herein we propose nanocomposites of laponite-PPy (Lp-PPy), intending to take advantage from the functional properties of both components in order to build robust thin film electrodes for electrochemical energy storage.

Because green energy is due to take a formidable share in near future, and the issue of energy storage is still not fully solved despite the huge ongoing research activities, devising bottom-

up solutions that could yield high energy storage capacities while maintaining low cost and low carbon foot-print may contribute to efficiently harness and exploit surplus green energy. We will show in the course of this paper that Lp-PPy nanocomposites can yield highly cost-effective, environmentally friendly and versatile supercapacitor electrodes.

Results and discussion

Structure characterization

The XRD patterns of Lp powder, Lp and Lp-PPy films are displayed in Fig. 1. The diffraction pattern of the Lp- powder is consistent with a hectorite-type powder pattern showing some disorder in the clay.¹⁶ When Lp is dispersed in water and deposited by dip-coting, the clay platelets form a film with the (00L) basal plane oriented parallel to the substrate surface, and the diffraction patterns show a well-defined and intense 001 diffraction peak at $2\theta = 6.28^\circ$. The full width at half-maximum (FWHM) of the 001 peak is 4.29° for the Lp-powder and decreases to 3.29° for the Lp- film; the calculated interplanar d-spacing is 1.41 nm, and is often referred to as the basal plane spacing.

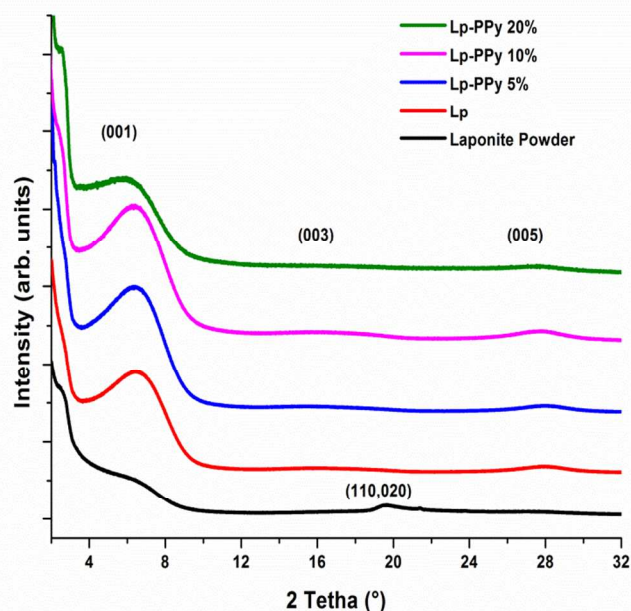


Fig. 1. X-ray diffractograms of Lp powder, Lp film and Lp-PPy nanocomposite films.

The XRD patterns of the Lp-PPy nanocomposites containing different PPy contents (2 to 20 wt %) show that with increasing PPy content up to 10% the intensity of the 001 peak slightly increases without noticeable change in FWHM. For the 20% PPy sample the intensity of this peak decreases and its FWHM increases suggesting increasing disorder of the Lp-particles. Further a slight shift in the basal plane diffraction peak to higher d-spacing with increasing PPy concentration is noticed, which indicates an increasing of layer spacing, although this shift is difficult to assess due to the large value of the FWHM of 001 peak. Using the Bragg's equation, the corresponding d_{001} increase is from 1.41 nm for the Lp-film to

1.57 nm in the nanocomposite sample, suggesting that the 001 plane of Lp is slightly affected by the presence of PPy (see below for discussion).

Additional information about the chemical structure of the synthesized Lp-PPy nanocomposites can be obtained using Raman spectroscopy. Fig. 2 shows the Raman spectra of Lp-powder, Lp-film and Lp-10%PPy nanocomposite as well as pure PPy. In the low energy region, the spectrum shows one band at 682 cm^{-1} assigned to Si-O-Si vibration and one band at 359 cm^{-1} assigned to Si-O bending vibration.¹⁷

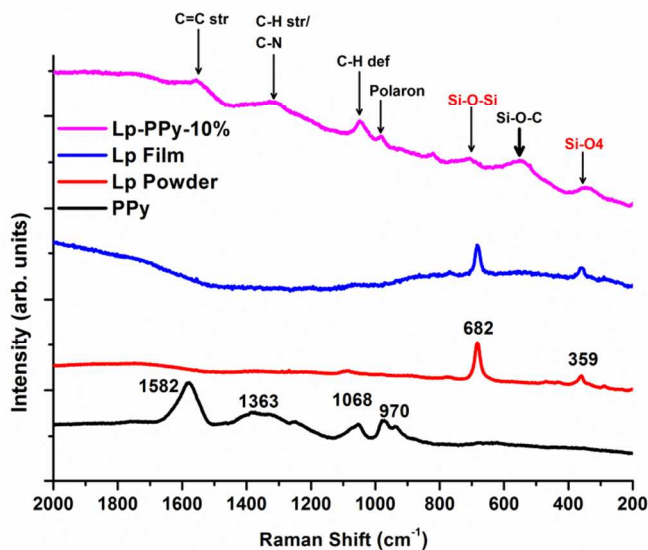


Fig. 2. Raman Spectra of dried PPy, Lp powder and Lp-PPy films (see main text for discussion).

Characteristic peaks of PPy (obtained by measuring a drop of pure PPy) appear in the range between 2000 cm^{-1} and 900 cm^{-1} ; they are attributed to C-H stretching and deformation vibration (1068 cm^{-1} and 1363 cm^{-1}). A sharp peak at 1582 cm^{-1} is ascribed to C=C stretching vibration. The nanocomposite shows in principle the same vibrations of the Lp film in addition to the characteristic vibrations of PPy. But additional peaks are also obtained, the origin of which may be speculated upon as pertaining to Si-O-C vibration. Early work on IR and Raman spectra of some silicon compounds, including substituted disililacetylene, by Kriegsmann and Beyer¹⁸ had shown that Si-O-C Raman deformation vibration was situated at approximately 507 cm^{-1} which is close to the somewhat broad peak centred at 540 cm^{-1} . However, it can also be noticed that the valence vibrations attributed to Si-O are somewhat displaced with respect to the values reported by Kriegsmann and Beyer. An explanation may be found in the different materials under investigation. On the basis of these data we may surmise grafting of PPy on Lp via C-O-Si- bonds.

Morphology observation

The top-view SEM micrograph (Fig. 3a) shows homogeneous, nanocrystalline morphology of the Lp film with elongated grains in the size range from 30 to 80 nm. The arrangement of the nanoparticles in the film is probably of the well-known T-type, or edge-to-face bonds^{19,20} as it arises from the electrostatic interaction between the positively charged particle rim and the

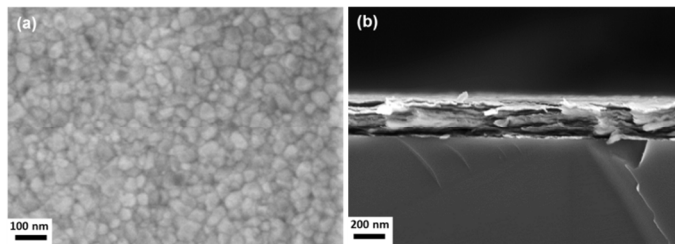


Fig. 3. Morphology of the Lp film: (a) top view showing the arrangement of the particles on the surface; (b) cross section that shows that the films are made-up of leaflet stacks parallel to the substrate surface.

negatively charged surface. The scanning transmission electron micrograph (Supporting Information, Fig. S2a) obtained on thin film areas prepared on a Ni-TEM grid suggests this kind of arrangement.

The addition of small amounts of PPy (2wt%) leads to drastic refinement of the microstructure (Fig. 4a), with no evidence of phase separation, at least to the resolution available for this work. This suggests a different arrangement of the Lp-particles, and indeed close examination of the cross-section micrograph of Fig. 4b reveals that the particles arrange in form of leaflets in which individual elements are glued face-to-face with their edges nearly perpendicular to the substrate surface. This arrangement suggests that PPy grafts on Lp-face (see Raman spectra above) and acts in a similar way to a glue between particles which on film deposition will form leaflet domains.

With increasing PPy content the SEM micrographs (Fig. 4c, and e) strongly suggest phase separation with the formation of PPy and Lp-rich nanodomains that appear to be interconnected throughout the surface. This phase separation can be observed through film thickness in Fig. 4d and more clearly for Lp-PPy-20% (Fig 4f). The high-resolution electron backscatter micrograph (Supporting Information, Fig. S2b) where atomic number contrast depicts PPy (dark) and Lp rich-domains (bright) confirms the nanoscale phase separation. More evidence of this phase separation can also be found in the AFM-micrographs using the force modulation modus of the AFM (Supporting Information, Fig. S3) that traces differences in the elastic properties of the participating materials.

The results above strongly suggest that the addition of PPy to Lp dispersion leads to a particular arrangement of the Lp-particles in the film with excess PPy being rejected to the interface of the Lp-domains. Due to the specific arrangement of the Lp-domains in the film excess PPy is thought to meander between the domains throughout film thickness. In general, according to Okamoto *et al.*²¹ a colloidal suspension of Lp and polymer may give rise to three general types of morphology (scheme 1) : (1) Intercalated clay composites formed by the insertion of one or more molecular layers of the organic compound into the clay host galleries. (2) Exfoliated clay composites or (3) Conventional composites containing clay with the layers no-intercalated in a face-to-face aggregation with segregation between clays and polymer. The results above rather suggest a mechanism of film formation based on grafting of a small fraction of polymer chains on the edges or faces of the Lp particles with excess polymer segregation between the laponite domains thus resulting in phase separation at the nanoscale.

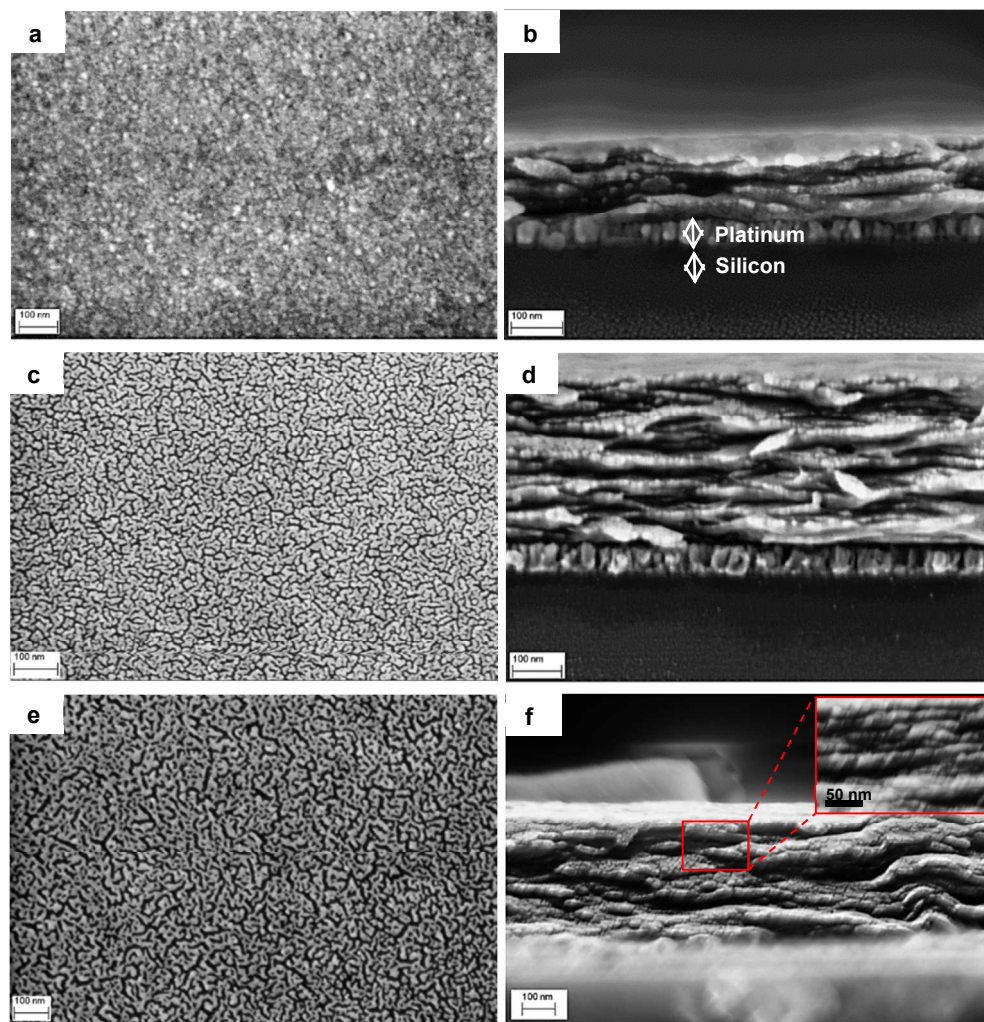


Fig.4. Morphology of Lp-PPy nanocomposites : top views and cross sections of Lp-PPy-2% (a,b), Lp-PPy-10% (c, d) and Lp-PPy-20% (e, f). Notice the fine structure in (a) that is barely resolved in comparison to Fig. 3a. The arrangement of the Lp nanoparticles (edge nearly perpendicular to substrate surface) is well seen in the cross-section micrographs. In (c and d) the phase separation at the nanoscale is evident: bright nanodomains are LP-rich, the dark, worm-like structure is PPy rich. In (f) one can notice the phase separation in the cross section and the shape of the Lp-platelets in the inset.

Electrochemical properties

The microstructure depicted above affords a high density of interfaces with a conducting phase (PPy) that meanders between Lp-rich domains throughout film thickness. This structure may therefore be particularly suitable for electrochemical supercapacitors. Because only a small fraction of the film consists of PPy the cost of such supercapacitor films may be kept low. The capacitive performance of the Lp and Lp-PPy film electrodes was electrochemically tested using cyclic voltammetry (CV) measurements in the potential window from 0 to 0.9 V at various scan rates. It is well-known that PPy behaves as pseudocapacitor following a well-known redox reaction²² in the negative voltage range, using non-aqueous electrolytes. Because the electrolyte used in this work is an aqueous solution of KCl we have deliberately opted for the voltage range above and avoided negative voltages where hydrogen evolution is set to take place which would and interfere with our results, e.g. through redox-reactions of the Pt-layer of the substrate. Bearing the latter in mind, the CV behaviour of the nanocomposite is exemplarily shown for Lp-PPy20% electrode in Fig. 5a where only the last curve of 50

cycles that are necessary for stabilization is depicted. The curves have nearly rectangular shape that indicates a good double-layer capacitive behaviour under the measured scan rates, and quick dynamics of charge propagation (for the plain film, see Supporting Information, Fig. S4a). With increasing scan rate, the CV curves gradually deviate from rectangular shape. This behaviour may be explained with the charge-discharge process of composites in KCl aqueous electrolyte, which is associated with the insertion of K^+ into the hybrid material and release of Na^+ to the electrolyte as reported by He *et al.*²³ At a low scan rate (e.g. 1 mV s^{-1}), the ions have enough time (the mean ionic penetration depth is generally proportional to the square root of time) to diffuse into most of accessible spaces of the hybrid composite, but at higher scan rates, e.g. of 100 mV s^{-1} , the K^+ ions can only reach the outer surface of the nanocomposite material and the internal part has little contribution to the electrochemical capacitive behaviour. The specific capacitance of Lp, PPy and Lp-PPy electrodes is calculated from the CVs (Supporting Information, Fig. S4) following the procedure outlined in the experimental section, and the dependence of the specific capacitance on the scan rate

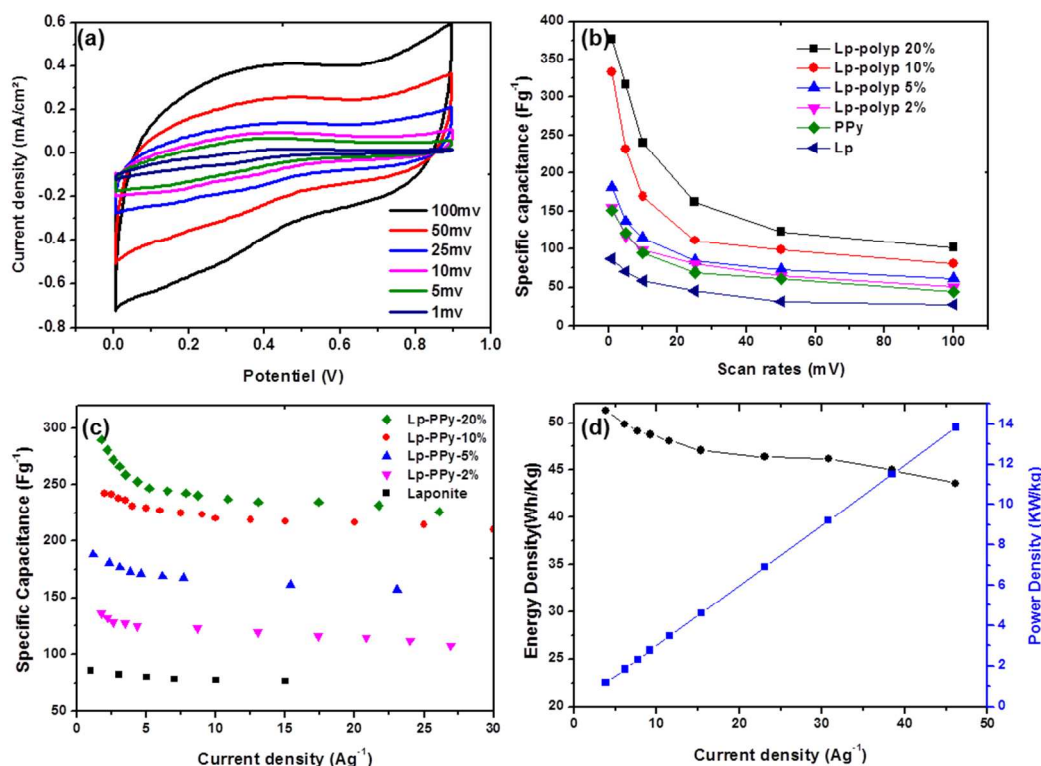


Fig. 5. (a) CVs curves of Lp-PPy-20% at different scan rates in 1 M KCl, (b) Plot of the specific capacitance versus scan rate. (c) Specific capacitance at different current densities. (d) Energy and power densities with various charge/discharge current densities of Lp-PPy-10% sample.

Table 1 Properties of the Lp-PPy nanocomposites films

Sample	Lp powder	Lp	Lp-Polyp 2	Lp-PPy 5	Lp-PPy 10	Lp-PPy 20
Composition						
PP/Lp (Wt:Wt)%	-	0	2	5	10	20
Thickness (nm)^a						
	-	370	350	320	320	400
XRD / 001peak						
2 θ (°)	6.33	6.31	6.25	6.18	5.9	5.65
d ₀₀₁ (nm)	1.41	1.39	1.42	1.44	1.49	1.57
FWHM (°)	5.5	3.43	3.4	3.46	4.15	4.9
Electrochemical						
Capacitance (Fg ⁻¹) ^b	-	87	154	181	320	350

^aEstimated from SEM micrographs

^bSpecific Capacitance at 1 mVs⁻¹

is depicted in Fig. 5b that shows the well-known downward trend with increasing scan rate. At 1 mV s⁻¹, the specific capacitance obtained for the nanocomposite increased with increasing Lp/PPy ratio from 87F/g for the Lp film to 350 F/g for Lp-PPy20% (Table1). These values are higher than the range of values reported for carbon-based materials, including carbon nanotubes, and are very similar to those reported for plain PPy electrodes.^{13, 24, 25}

The cause for this higher capacitance could be attributed to the higher conductivity pertaining to the PPy phase and the larger surface that arises from the nanoscale phase separation. The electronic charge path is thought to the meandering PPy phase throughout film thickness to the collector electrode.

In this respect the higher value of specific capacitance obtained for Lp-PPy20% may be attributed to a combination of higher conductivity and large surface area accessible to ionic species, because it is well know that double layer capacitance per unit of external surface area is strongly dependent on surface morphology and porosity.^{26,27} For practical applications, the galvanostatic charging–discharging behavior is more appropriate to describe the performance of the electrode. Fig 5c shows the charging–discharging curves at 3Ag⁻¹ for the different electrodes investigated in the potential range from 0 to 0.6 V. The charging–discharging curves are triangular in shape with linear charging–discharging behaviour that is characteristic for double layer capacitors, and denotes good charge–discharge reversibility and an ideal capacitive behaviour (Supporting Information, Fig. S4b). The specific capacitance can then be obtained from the slope of the charge–discharge curve according to the procedure described in the experimental section. Fig. 5c shows that the specific capacitance is nearly constant for all current densities investigated, with values ranging from 80 F/g for the plain Lp film and from 136 to 290 F/g for increasing PPy content from 2 to 20%. The long term behaviour was investigated at 3Ag⁻¹ for 500 cycles without noticeable change in the specific capacitance (Supporting Information, Fig. S5). Energy density and power density are additional important factors that characterize the performance of the capacitor electrode. Using the galvanostatic charge/discharge curves, the energy and power densities can be calculated using Equations (3) and (4) as follows:

$$De=1/2 CV^2 \quad (3)$$

$$Dp=De/At \quad (4),$$

where De is the energy density, C is the specific capacitance, V is the potential window of charge-discharge, Dp is the power density, and Δt is the discharge time in the potential window. Fig. 5d shows exemplary on Lp-PPy10% the values of De and Dp as function of discharge current density. De decreases from 51 W h kg^{-1} to 42 W h kg^{-1} while Dp increases from 0.3 kW kg^{-1} to 16.5 kW kg^{-1} , as the discharge current density increases from 2 A g^{-1} to 50 A g^{-1} . Based on these properties the power density measured can reach the power target of the Partnership for a New Generation of Vehicles (PNGV, 15 kW kg^{-1}),²⁸ suggesting that such composite is a promising electrode material for components in hybrid vehicle systems. In addition to cyclic voltammetry, the capacitive behaviour of the Lp and Lp-PPy nanocomposite films is further investigated using electrochemical impedance spectroscopy (EIS) in three-electrode cell measurements in KCl electrolyte.

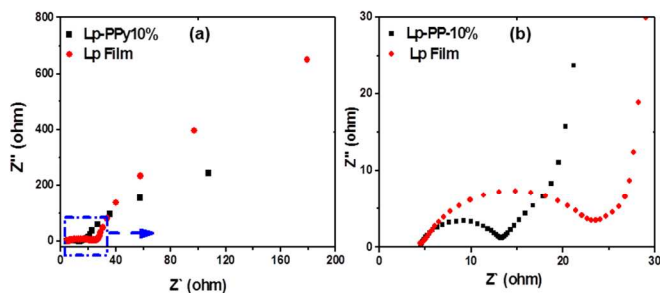


Fig. 6. (a) Nyquist plots of the EIS for Lp and Lp-PPy-10% sample (b) the magnified part of the semicircles.

Fig. 6 presents the Nyquist plots of the Lp and Lp-PPy10% samples tested in 1M KCl. The Nyquist plot represents the behaviour of an electrical double layer capacitor, which can be easily described by a series resistance (R_s) related to the bulk electrolyte and to the involved faradic process^{29,30} and a double layer capacitance (C_{dl}) related to the charge accumulation at the electrode/electrolyte interface.

From the Nyquist plot, a charge transfer resistance can be obtained from the diameter of the semicircle. At high frequency (i.e. at low resistance Z' values), the impedance implies the conductivity of both active materials and electrolyte. The high-to-medium frequency region shows pseudocharge transfer resistance, which is associated with the porous structure of the nanocomposite. The low frequency range (i.e. at high resistance Z' values), of the impedance characterizes pure capacitive behaviour. Theoretically, an ideal double layer capacitor should display a parallel line to the imaginary axis of the Nyquist plot. However, in our case, the plot shows a line with an inclined angle between 45° and 90° against the real axis, denoting the existence of pseudocapacitive processes³¹ that are probably related to the redox reactions of PPy the electrode.³²

From the diameters of the semicircle, the charge-transfer resistance of Lp and Lp-PPy10% was calculated to be 15 and 7Ω , respectively. The high resistance of the pristine Lp sample indicates its poor conductive property. The relatively low resistance obtained for Lp-PPy10% may be explained by the particular nanoscale structure discussed above that affords efficient pathways for charge transport.

Experimental section

Materials

Laponite RD, synthetic smectic clay with a density of 2.65 g cm^{-3} , was obtained from Southern Clay Products and used as received without any further purification. Doped Polypyrrole, high-conductivity grade, dispersed in water was purchased from Aldrich (Germany). Deionized water was used to prepare aqueous solutions.

Preparation of Laponite/Polypyrrole solutions

Lp/PPy mixture was prepared as follows. First 1% of well-dispersed clay suspension that was prepared by adding 0.5 g of Lp nanoparticles into 50 mL of water (at a pH of 9.6). The dispersion was stirred at room temperature overnight. A dispersion of PPy (5% in water), was then added to Lp sol in various weight ratios to obtain the clay/polymer mixture in its final aqueous form. The mixture was stirred for 24 hours at room temperature and ultrasonicated for around 15 minutes before use.

Lp/PPy films elaboration

Large particles were removed from the solution by filtration ($1.2 \mu\text{m}$ filter) before coating. The films were deposited by dip-coating in a glove box onto cleaned substrates with a withdrawal speed of 100 mm/min . Platinized silicon wafers were used as substrates. The coating layer is dried at 80°C for 15 hours. High quality transparent films are obtained and studied at room temperature. The film thickness was in the range from 320 to 400 nm , determined from SEM cross section. Sample series were fabricated via dip coating for electrochemical tests and structural characterization. The first consisted of pure Lp films, the second of Lp-PPy of various percentages of PPy. Samples were designated Lp-xPPy where x is the PPy/Lp ratio (wt:wt).

Materials characterization

Morphology: Top-views and cross-sections of the film morphology were obtained with a high-resolution scanning electron microscope (SEM), equipped with a scanning transmission electron microscopy (STEM) detector and an energy dispersive spectroscopy (EDS) detector (Ultra Plus, Zeiss, Oberkochen, Germany, and Oxford INCA, UK). Atomic force microscope (AFM, Nano wizard, JPK Instruments, Berlin) images were obtained in tapping mode using super-sharp silicon tips (Nanosensors, Neuchatel, Switzerland).

Structure: X-ray diffraction (X'Pert Pro system, PANalytical, Almelo, The Netherlands) data was obtained in grazing incident geometry with fixed angle of 1.5° and 2θ step of 0.05° using monochromatic Cu K α radiation ($\lambda=1.5418\text{\AA}$). The d-spacings (d_{001}) and the full width at half maximum (FWHM) were calculated from the angular 2θ positions after the modelling of the diffractograms.

A Bruker Raman microscope (SINTERRA, Bruker, Germany) was used to acquire Raman scattering spectra over a range of $70\text{--}3600 \text{ cm}^{-1}$, with a spectral resolution of $3\text{--}5 \text{ cm}^{-1}$, using a backscattering configuration with a $20\times$ objective excited with a 532 nm laser diode. Data were collected on numerous spots on the sample and recorded with a fully focused laser power of 20 mW . Each spectrum was accumulated four times with an integration time of 10 s . The Raman signal was recorded using a CCD camera. Silicon substrate Raman peak position (520 cm^{-1}) was used to calibrate spectral frequency.

Electrochemical characterization: The electrochemical performance of the film electrodes was studied with cyclic voltammetry (CV), galvanostatic charge–discharge and electrochemical impedance spectroscopy (EIS) techniques. The electrochemical experiments were performed at room temperature in a standard three-electrode cell. CVs and EIS were obtained using an electrochemical workstation (ZAHNER IM6e, Kronach, Germany), and charging–discharging tests were performed using Source Meter 2400 (Keithley, Cleveland, OH, USA). A Pt mesh and hydroflex (H₂ reference electrode) were used as counter and reference electrodes, respectively. All potentials are referred to the standard hydrogen electrode (SHE).

To measure the capacitance of the electrodes, CVs were recorded in an aqueous electrolyte containing 1 M KCl between 0 V and 0.9 V at different scan rates. The charge–discharge behaviour at different current densities and long-term cycling stability were tested in 1 M KCl. Before each electrochemical experiment, N₂ was bubbled in the electrolyte for 30 min. The electrochemical experiments were conducted on a minimum of three to five samples each. The specific capacitances were calculated from the CVs using the equation given below³³:

$$C = I/(2 \cdot V \cdot S \cdot m) \quad (1),$$

where C is the specific capacitance (F/g), I the integrated area (VA) of the CV curve in one complete cycle, V the potential window (V), S the scan rate (V/s), and m the mass (g) of the film estimated from the mass of non-volatile species present in the solution. The mass value was confirmed using film thickness and PPY/Lp volume fraction obtained from SEM micrographs and *ImageJ* software (Supporting Information, Fig. S1).

From the slope of the charge–discharge curve, the specific capacitance can then be deduced according to the following:

$$C = I \cdot t / (V \cdot m) \quad (2),$$

where I is the applied current I (A) and t the discharge time (s).

Conclusions

In the present work Lp-PPy nanocomposites containing 2 to 20% of PPy were investigated. With increasing PPy content evidence of a phase separation at the nanoscale is obtained with the formation of Lp and PPy rich nanodomains. The PPy phase appears to meander through film thickness down to substrate surface. The high surface area obtained through the nanoscale phase separation together with the well-known conductivity of the polypyrrole phase affords promising nanocomposite electrodes for supercapacitor application. The electrodes combine high specific capacitance with promising retention rate and long term stability. More important advantages may be seen in the robustness of the nanocomposite and its cost-effectiveness because: i) the Lp-nanomaterial acts as reinforcing component for the polymer; ii) the amount of the expensive PPy phase is reduced to few tens of percent. Moreover, because processing is from aqueous suspensions at ambient atmosphere and curing temperatures are below 90°C the films are environmentally friendly. Further they can be deposited on electroded polymer sheets in a continuous process, thus allowing electrode coils to be fabricated, and therefore making industrial up-scaling an easy issue.

Acknowledgements

Financial support of this work is provided by the EU-program INTERREG IVA-Southern Denmark-Schleswig-K.E.R.N.-Project# 111-1.2-12 “SuperCap”
M. Fatnassi and M. Es-Souni contributed equally to this work.

Notes and references

Institute for Materials & Surface Technology, University of Applied Sciences Kiel, Germany. E-Mail: me@fh-kiel.de.

Electronic Supplementary Information (ESI) available: See DOI: 10.1039/b000000x/

- a) C. Sanchez, P. Belleville, P. M. Popall, L. Nicole, *Chem. Soc. Rev.*, 2011, **40**, 696 ; b) G. M. Nascimento, V. R. L. Constantino, R. Landers, M. L. A. Temperini, *Macromolecules*, 2004, **37**, 9373.
- M. I. Carretero, M. Pozo, *Appl. Clay Sci.*, 2010, **47**, 171.
- V. Rives, M. del Arco, C. Martin, *Appl. Clay Sci.*, 2014, **88–89**, 239.
- J. I. Dawson, R.O. C. Oreffo, *Adv. Mater.*, 2013, **25**, 4069.
- Z.P. Xu, J. Zhang, M. O. Adebajo, H. Zhang, Ch. Zhou, *Appl. Clay Sci.*, 2011, **53**, 139.
- S. Navalon, M. Alvaro, H. Garcia, *Appl. Catal. B: Environ.*, 2010, **99**, 1.
- C. Belver, P. Aranda, E. Ruiz-Hitzky, *J.Mater.Chem.A*, 2013, **1**, 7477.
- S. M. Lee, D. Tiwari, *Appl. Clay Sci.*, 2012, **59**, 84.
- S. M. Liff, N. Kumar, G. H. MCKinley, *Nature Mater.*, 2007, **6**, 76.
- V. L. Reena, C. Pavithran, V. Verma, J. D. Sudha, *J. Phys. Chem. B*, 2010, **114**, 2578.
- S. Letaïef, A. Martín-Luengo, P. Aranda, E. Ruiz-Hitzky, *Adv. Funct. Mater.*, 2006, **16**, 401.
- H. He, Q. Tao, J. Zhu, P. Yuan, W. Shen, Sh. Yang, *Appl. Clay Sci.*, 2013, **71**, 15.
- T. V. Vernitskaya, O. N. Efimov, *Russ. Chem. Rev.*, 1997, **66**, 443.
- E. Smela, J. Micromech. *Microeng.*, 1999, **9**, 1.
- M. Fatnassi, C.H. Solterbeck, M. Es-Souni, *RSC Adv.*, 2014, **87**, 46976.
- H. Van Olphen, J.J. Fripiat, Data Handbook of Clay Materials and Other Non-metallic Minerals OECD and Clay Minerals Society, Pergamon Press, New York 1979.
- Y. Sekine, T. Ikeda-Fukazawa, *J. Chem. Phys.*, 2009, **130**, 034501.
- H. Kriegsmann, H. Beyer, *Z. anorg. Allg. Chemie*, 1961, **311**, 180.
- H. van Olphen, An Introduction to Clay Colloid Chemistry, Wiley, New York, 1977.
- M. Dijkstra, J-P. Hansen, P.A. Madden, *Phys. Rev. E.*, 1997, **55**, 3044.
- S. Ray, M. Okamoto, *Prog. Polym. Sci.*, 2003, **28**, 1539.
- A F Diaz, J I Castillo, J A Logan, W-Y Lee, *J. Electroanal. Chem.*, 1981, **129**, 115.
- J. Zhu, J. He, *ACS Appl. Mater. Interfaces*, 2012, **4**, 1770
- T. Chen, L. Dai, *Mater. Today*, 2013, **16**, 272.
- D.N. Futaba, K. Hata, T. Yamada, T. Hiraoka, Y. Hayamizu, Y.Kakudate, O. Tanaïke, H. Hatori, M. Yumura, S. Iijima, *Nature Mater.*, 2006, **5**, 987.
- H.Shi, *Electrochim. Acta.*, 1996, **41**, 1633.

- 27 N. Brun, S.R.S. Prabaharan, C. Surcin, M. Morcrette, H. Deleuze, M. Birot, O. Babot, M.-F. Achard, R. Backov, *J. Phys. Chem. C*, 2012, **116**, 1408.
- 28 D.W. Wang, F. Li, M. Liu, G.Q. Lu, H.M. Cheng, *Angew. Chem. Int. Ed.*, 2008, **47**, 373.
- 29 K. Liang, X. Tang, W. Hu, *J. Mater. Chem.*, 2012, **22**, 11062.
- 30 G. Han, Y. Liu, E. Kan, J. Tang, L. Zhang, H. Wang, W. Tang, *RSC Adv.*, 2014, **4**, 9898.
- 31 L. Cui, J. Li and X. G. Zhang, *J. Appl. Electrochem.*, 2009, **39**, 1871.
- 32 H. Liu, P. He, Z. Li, Y. Liu and J. Li, *Electrochim. Acta*, 2006, **51**, 1925.
- 33 KW Nam, KB Kim. *J. Electrochem. Soc.*, 2002, **149**, 346.