

# RSC Advances

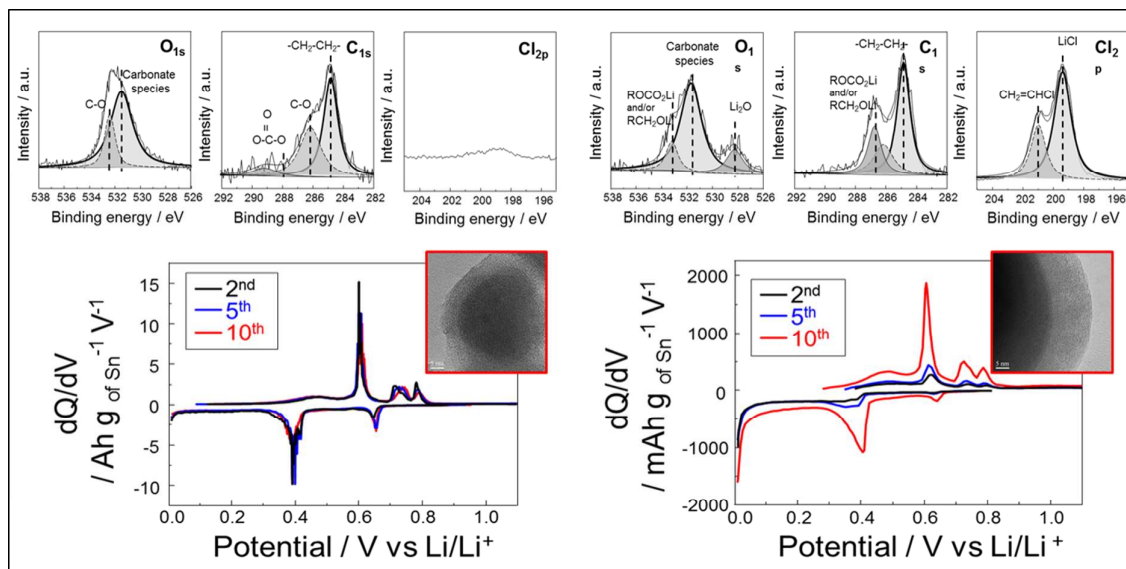


This is an *Accepted Manuscript*, which has been through the Royal Society of Chemistry peer review process and has been accepted for publication.

*Accepted Manuscripts* are published online shortly after acceptance, before technical editing, formatting and proof reading. Using this free service, authors can make their results available to the community, in citable form, before we publish the edited article. This *Accepted Manuscript* will be replaced by the edited, formatted and paginated article as soon as this is available.

You can find more information about *Accepted Manuscripts* in the [Information for Authors](#).

Please note that technical editing may introduce minor changes to the text and/or graphics, which may alter content. The journal's standard [Terms & Conditions](#) and the [Ethical guidelines](#) still apply. In no event shall the Royal Society of Chemistry be held responsible for any errors or omissions in this *Accepted Manuscript* or any consequences arising from the use of any information it contains.



### Influence of the diffusion-layer thickness during electrodeposition on the synthesis of the nano core/shell Sn-O-C composite as an anode of lithium secondary batteries

Moongook Jeong, Tokihiko Yokoshima, Hiroki Nara, Toshiyuki Momma, Tetsuya Osaka

Electrodeposition of nano core/shell Sn-O-C composite anodes for lithium secondary batteries and improvement of cycle performances by simple agitation technique.

# Influence of the diffusion-layer thickness during electrodeposition on the synthesis of the nano core/shell Sn-O-C composite as an anode of lithium secondary batteries

Cite this: DOI: 10.1039/x0xx00000x

Received 00th month year,  
Accepted 00th month year

DOI: 10.1039/x0xx00000x

www.rsc.org/

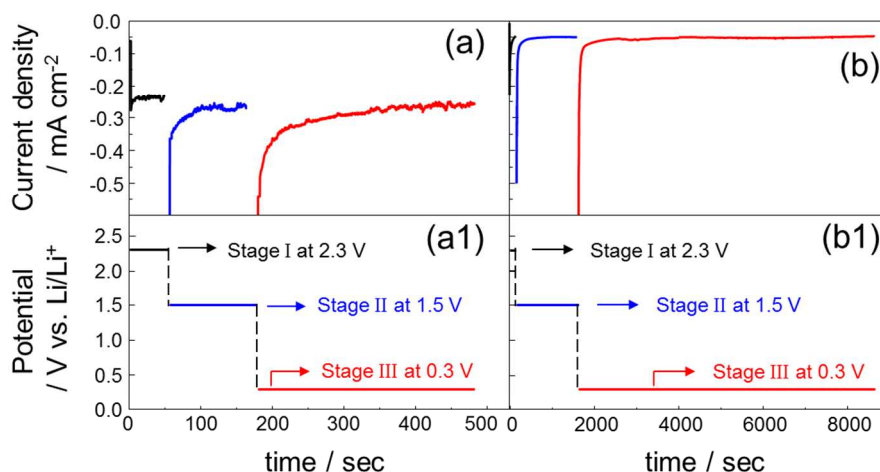
Moomgook Jeong,<sup>a</sup> Tokihiko Yokoshima,<sup>b</sup> Hiroki Nara,<sup>b</sup> Toshiyuki Momma<sup>ab</sup> and Tetsuya Osaka<sup>\*ab</sup>

Electrodeposition was conducted from organic carbonate solvent via the potentiostatic technique through three consecutive steps in order to synthesize the Sn-O-C composite, which delivered a discharge capacity of 596 mAh g<sub>of Sn</sub><sup>-1</sup> after 50th cycles. However, the composite anode suffered from a significantly low initial discharge capacity, delivering a discharge capacity of 79 mAh g<sub>of Sn</sub><sup>-1</sup> until the 5th cycle. It was deduced that the improbably low initial capacity was induced from the deposition of Li-rich compounds, which were formed by electrolyte decomposition accompanied by the reduction product of supporting electrolyte salts during the electrodeposition process, on the surface layer. In order to improve the poor initial capacity, we modified the chemical composition of the surface layer by means of implementing the agitation of the electrolyte during the deposition process. This gave rise to varying the diffusion-layer thickness during the deposition process due to the enhancement of convection by movement of the electrolyte itself. As a result, we achieved improvement of the initial discharge capacity, delivering 572 mAh g<sub>of Sn</sub><sup>-1</sup> at the 1st cycle and 586 mAh g<sub>of Sn</sub><sup>-1</sup> at the 50th cycle. It was revealed that the surface layer was composed of a decomposition product of the organic carbonate solvent. Furthermore, a smaller particle size of the Sn-O-C composite was obtained via electrolyte agitation, giving rise to homogeneous shell formation on the Sn compound core. Herein, we thoroughly examined the influence of varying diffusion-layer thickness during the deposition process on the properties of the Sn-O-C composites from an electrochemical standpoint.

## Introduction

Recently, researches on tin-based material for an Li-alloying anode of lithium ion batteries (LIBs) have been accelerated due to its higher theoretical capacity (Li<sub>4.4</sub>Sn; 993 mAh g<sup>-1</sup>) than that of a commercial graphite anode (LiC<sub>6</sub>; 372 mAh g<sup>-1</sup>), which has been considered as one of solutions for the development of energy resources for electric vehicles.<sup>1</sup> In spite of the high energy density of tin-based materials for an anode of LIBs, the material has a significant shortcoming to attain a stable cycle life due to its drastic volume change (250–400 %) during the charge/discharge cycle. Once the volume has been changed, it creates a mechanical crack and pulverization in the active material with repeated cycles. Consequently, it suffers from electrical isolation and disintegration, causing rapid

capacity failure within initial cycles.<sup>2, 3</sup> Therefore, enduring volume change by controlling material properties is a challenging task to achieve stable cycle life. To solve the abovementioned problems, diverse strategies have been attempted, such as through a Sn nanostructure<sup>4–6</sup>, an embedded matrix buffer<sup>7–13</sup>, or a mesoporous structure<sup>14–17</sup>. The Sn nanostructure can reduce mechanical stress induced during the electrochemical cycles by minimizing Sn particles. A suitably embedded buffer matrix, such as a carbon composite or non-active inter-metallic compound, can endure the massive volume changes by acting as a buffer matrix and absorbing the drastic volume changes. The porous space of mesoporous Sn anodes can avoid aggregation and pulverization during cycling.



**Fig. 1** Current transient curves (a, b) on potentiostatic deposition with three steps and their applied potentials (a1, b1) at each step. (a, a1) deposition with bath agitation by simple magnetic stirring and (b, b1) without bath agitation.

Meanwhile, understanding on the passivating layer between an electrode and electrolyte after cycling has been impressively undertaken as an important phenomenon in the chemistry of LIBs, which is the so-called solid electrolyte interphase (SEI)<sup>18</sup>. The importance of SEI has been well recognized in a number of reports<sup>18-22</sup>. Decomposition of organic electrolytes arises on both the anode and cathode mostly during the several initial several cycles causing SEI formation. The decomposed solvent and Li salt generate a passivating layer, behaving as an electronic insulation while also as a conductor for Li<sup>+</sup> ions to pass. The electronic insulation behaviour is a significant characteristic of SEI since it suppresses further decomposition of electrolytes during the following cycles, causing SEI thickening, which increases internal resistance, the self-discharge and low faradaic efficiency<sup>23</sup>. Furthermore, high Li<sup>+</sup> ion conductivity is essential for the SEI layer to avoid an increase in overpotential during cycling. Thus, the SEI layer determines the performance of LIBs, such as cycle life, durability and even safety<sup>24</sup>.

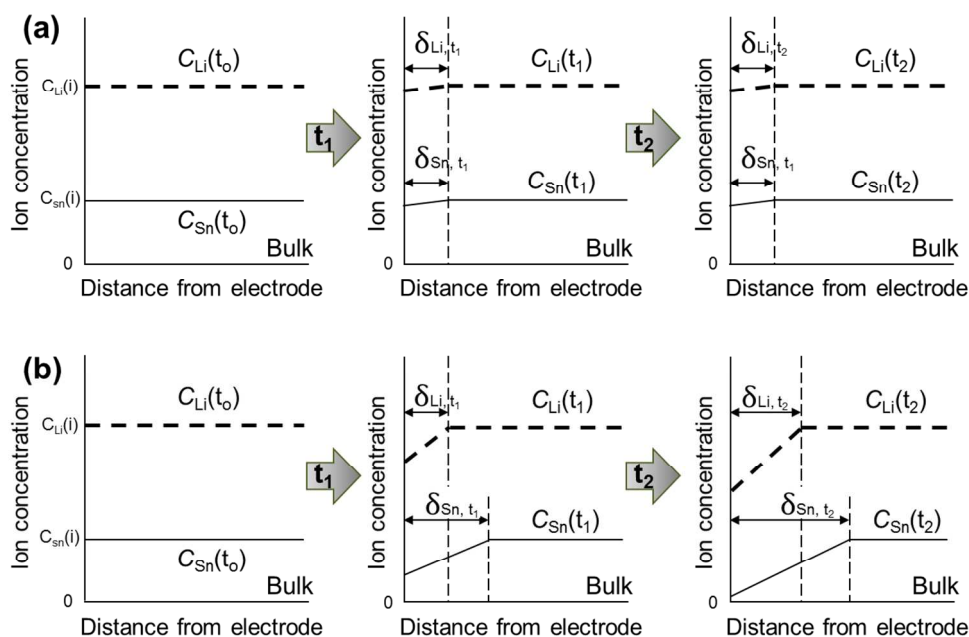
In our previous work, we accomplished the electrodeposition of the Sn-O-C composite anode from an organic carbonate solvent showing a discharge capacity of 465 mAh g<sup>-1</sup> of Sn<sup>-1</sup> after 100 cycles, which was synthesized by the galvanostatic deposition technique<sup>25</sup>. It was clarified that the Sn deposition and electrolyte decomposition were simultaneously carried out during the electrodeposition process, giving rise to an inorganic/organic composite with a structure of polycrystalline Sn metal surrounded by SEI formation. The stable cycle life was derived from the inorganic/organic composite acting as a buffer matrix against stress for volume change. We also thoroughly examined the electrodeposition mechanism showing three different deposition steps that emulated a trace of the potential transient profile during the galvanostatic deposition, as revealed in our previous report. The results revealed that the deposition mechanism was composed of multi-stages including 2.3, 1.5 and 0.3 V vs Li/Li<sup>+</sup> for Sn deposition, catalytic decomposition of the organic carbonate solvent, and a reaction between Li<sup>+</sup> ions and deposited Sn,

respectively<sup>26</sup>. The cycle performances of the Sn-O-C composite as an anode material were strongly influenced by the method of controlling the duration on the specific step where different electrochemical reactions have occurred.

In the present work, we attempted to deposit the Sn-O-C composite from an organic carbonate solvent via the potentiostatic technique with three consecutive steps including 2.3, 1.5 and 0.3 V vs Li/Li<sup>+</sup> as the deposition mechanism, which was suggested in our previous work. Consequently, the Sn-O-C composite with a nano core/shell structure was synthesized. We confirmed that the chemical composition of the shell layer strongly influenced on the cycle performances, such as poor initial capacity and coulombic efficiency of the Sn-O-C composite. To improve the improbable initial performances, we implemented electrolyte agitation through simple magnetic stirring. Herein, we comprehensively examined the effects of the electrolyte agitation during the deposition process with electrochemical standpoints by comparing them with the characteristics of the deposited composites without electrolyte agitation. Furthermore, the influence of agitation on the morphological characteristics and chemical compositions of the deposited Sn-O-C composites accompanied by their cycle performances were also closely investigated as a candidates of anode materials for lithium secondary batteries. Hereafter, the Sn-O-C composites electrodeposited with electrolyte agitation and without electrolyte agitation are simply referred to as “a composite deposited with bath agitation” and “a composite deposited without bath agitation”, respectively.

## Results and discussion

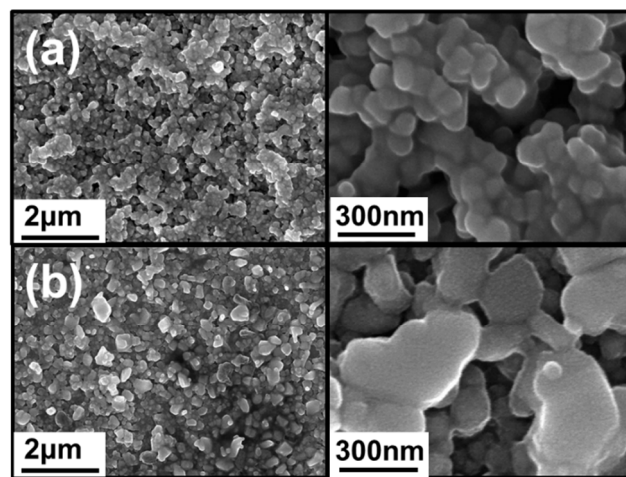
The influence of electrolyte agitation through simple magnetic stirring was electrochemically analysed and the results are shown in Fig. 1 as curves of the current transient on potentiostatic deposition with three steps accompanied by the corresponding applied potentials. This result indicated a rapid decrease in the current density during the initial few seconds,



**Scheme 1** Schematic diagrams illustrating variation on diffusion-layer thickness dependent on deposition time, (a) deposition with bath agitation by simple magnetic stirring and (b) without bath agitation.

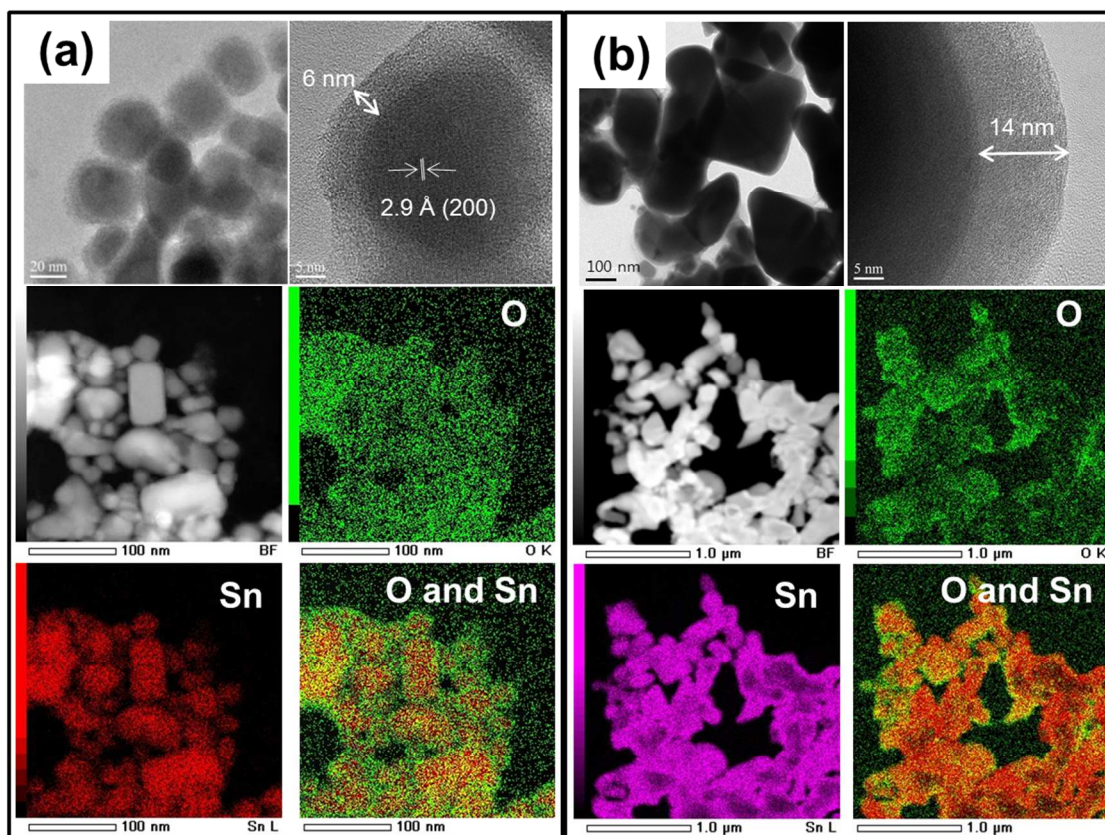
which was obtained with each current transient of the three potentiostatic steps for both composites deposited with and without bath agitation. The sharp decrease in initial current density was followed by a fairly constant value, implying that nucleation mostly occurred during the initial process at the each deposition step. In Fig. 1a, constant values of the current transient of the composite deposited with bath agitation obtained unstable transient curves of ca.  $-0.23$ ,  $-0.25$  and  $-0.26$   $\text{mA cm}^{-2}$  from the potentiostatic three steps at 2.3, 1.5 and 0.3 V vs Li/Li<sup>+</sup>, respectively. However, the composite deposited without bath agitation attained a remarkably lower and more stable current density value of ca.  $-0.046$ ,  $-0.048$  and  $-0.052$   $\text{mA cm}^{-2}$  obtained from the potentiostatic three steps at 2.3, 1.5 and 0.3 V vs Li/Li<sup>+</sup>, respectively (Fig. 1b). These are typical effects of electrolyte agitation during the deposition process, since the movement of the bulk solution by electrolyte agitation generally results in an enhancement on the convection, giving rise to the vigorous delivery of metal ions to the cathode surface<sup>27</sup>. According to the electrochemical standpoint, it is thought that there are three basic mechanisms of mass transport: diffusion, migration and convection. The contribution of migration for the delivery of metal ions is insignificant<sup>27, 28</sup>. Therefore, it is supposed that the main driving forces contributing to electrodeposition are derived from a concentration gradient (diffusion) and movement of the reacting species, themselves (convection). Scheme 1a and b are the schematic illustrations accounting for variations on diffusion-layer thickness dependent on deposition time. To begin with a consideration of the deposition without bath agitation (Scheme 1b), in general, the metal ion concentration on the cathode surface is reduced after a certain deposition time of  $t_1$ . Afterward, a decrease in the metal ion concentration

continuously rises with a further deposition time of  $t_2$ . Consequently, the diffusion layer become thickened with an increase in deposition time. Meanwhile, the metal ion concentration for the deposition with bath agitation (Scheme 1a) also decreases after a certain deposition time of  $t_1$ . However, it is assumed that the continuous decrease in the metal ion concentration does not occur with a further deposition time of  $t_2$  due to the enhanced mass transport behaviour from the contribution of the convection caused by bath agitation. As a result, a thinner diffusion layer can be generated, which can be electrochemically explained with limiting current density ( $i_L$ ) expressed as



**Fig. 2** Low and high magnification FE-SEM images of the as-prepared Sn-O-C composite deposited with (a) and without (b) bath agitation.





**Fig. 3** FE-STEM images with EDS element mapping of the as-prepared Sn-O-C composite deposited with (a) and without (b) bath agitation.

$$i_L = zFD \frac{c_\infty}{\delta_N} \quad [1]$$

where  $z$  is the number of electrons of a metal ion,  $F$  is Faraday's constant,  $D$  is the diffusion coefficient,  $C_\infty$  is the ion concentration of a bulk solution and  $\delta_N$  is the diffusion-layer thickness<sup>29</sup>. The terms of  $z$ ,  $F$  and  $D$  are constant, and an identical value of the ion concentration was used for both depositions with and without bath agitation. Thus, herein, the diffusion-layer thickness is the only factor influencing the limiting current density, which corresponds to the results of current transients indicated in Fig. 1a and b. The influence of varying  $\text{Li}^+$  ion concentrations and overpotential will be thoroughly discussed in the latter section.

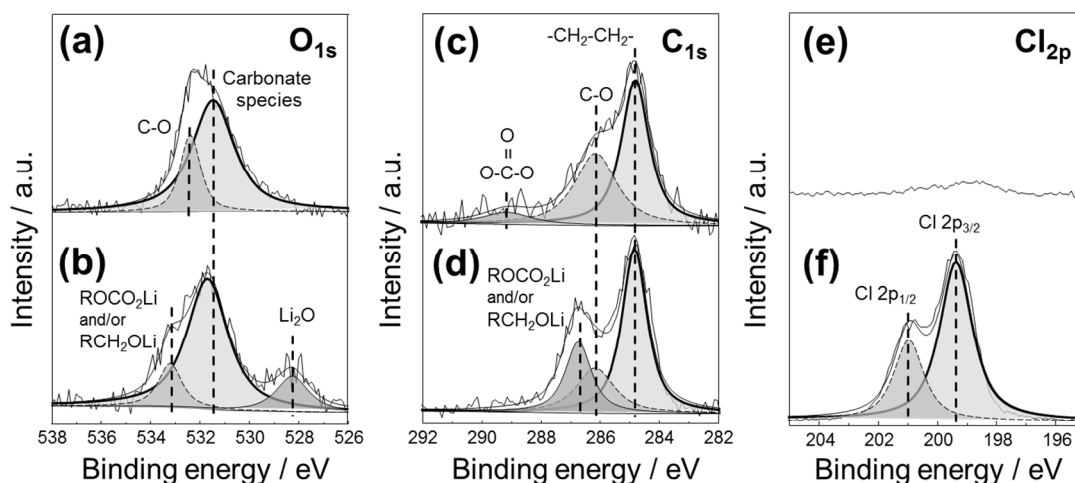
Morphologies of the as-prepared Sn-O-C composites deposited with and without bath agitation are shown in Fig. 2 with low and high magnification FE-SEM images. Both Sn-O-C composites showed small particles on a nano-sized scale. It was also observed that inter-particle void spaces were formed by randomly overlapped particles in both composites deposited with and without bath agitation. In Fig 2a, the composite deposited with bath agitation indicated many aggregated structures composed of small particles with a size of 50-90 nm, causing the formation of clustered particles with a size of 400-500 nm. The inter-particle void space was produced by aggregation of the particle clusters, not of individual small

particles. However, the morphologies of the composite deposited without bath agitation indicated relatively large particles with a size of 400-500 nm. The particle size from the electrochemical standpoint was defined as the relationship between the rate of nucleation and the growth of crystals<sup>29</sup>. From morphological observation, it was thought that the composite deposited with bath agitation was mainly carried out by a high rate of nucleation and slow growth, resulting in the formation of a small particle structure. On the other hand, the composite deposited without bath agitation showed a comparably larger particle size, which was derived from the growth of nuclei during the deposition process. In general, the particle size can be explained as the critical radius of the nucleus,  $r_c$ , which is a function of overpotential,  $\eta$ <sup>30</sup>;

$$r_c = \frac{s\varepsilon}{ze\eta} \quad [2]$$

where  $s$  is the area occupied by one atom on the surface of the nucleus, and  $\varepsilon$  is the edge energy. From this equation,  $r_c$  is inversely proportional to the overpotential  $\eta$ . The overpotential can be classified by two terms: a complex function of the charge transfer kinetics, so-called activation overpotential,  $\eta_{act}$ , and a function of the mass transport limitations, so-called concentration overpotential,  $\eta_{conc}$ , as shown below.

$$\eta_{tot} = \eta_{act} + \eta_{conc} \quad [3]$$



**Fig. 4** XPS spectra of the as-prepared Sn-O-C composite deposited with (a), (c), (e) and without (b), (d), (f) bath agitation.

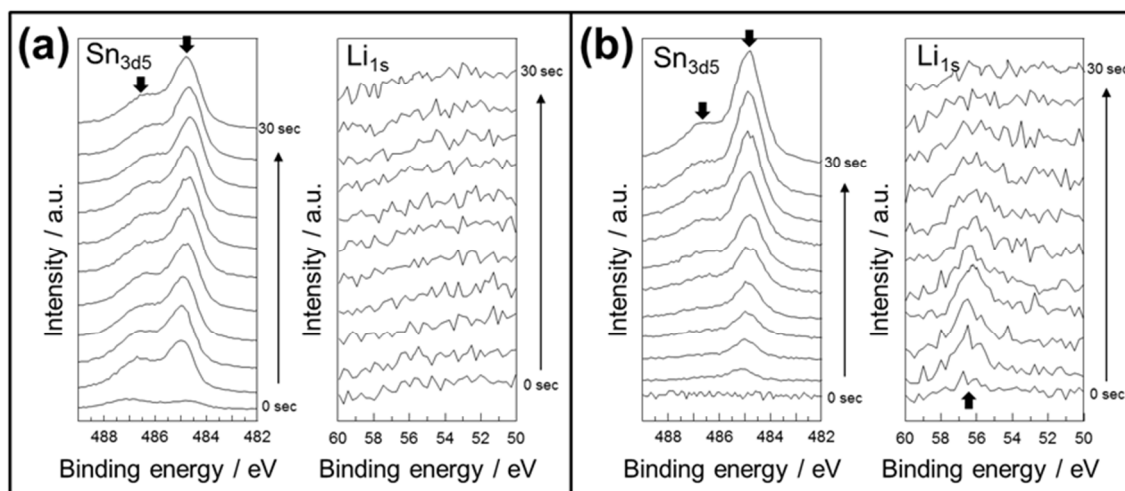
Herein, the electrodeposition was conducted by a potentiostatic deposition technique. In other words, the  $\eta_{tot}$  was identically constant for both deposition processes at the individual stages. However, the  $\eta_{conc}$  of deposition with bath agitation was smaller than that of the deposition without bath agitation due to movement of the reacting species themselves by enhancement on convection caused by magnetic stirring. Thus, the  $\eta_{act}$  of the deposition with bath agitation became larger than that of the deposition without bath agitation, resulting in the relationship between the rate of nucleation and the growth of crystals, as aforementioned.

To investigate the structure of the as-prepared composites, FE-STEM images with EDS element mapping were observed. The FE-STEM images of the composite deposited with bath agitation (Fig. 3a) indicated that a particle consisted of a dark part covered by a thin amorphous layer with a thickness of ca. 6 nm, showing a core/shell structure. The core showed lattice fringes of the (200) planes, which corresponded to the d-spacing value of 2.9 Å of the tetragonal tin. Another particle also verified the lattice fringes of the (101) planes corresponding to a d-spacing value of 2.7 Å (ESI†, Fig. S1a). Furthermore, the selected area electron diffraction (SAED) pattern (ESI†, Fig. S1b) showed point and ring patterns, indicating the presence of single and polycrystalline planes, which was assigned to (101), (200), (211) and (400) planes of the tetragonal Sn. These results implies that the core of the particle consisted of a single crystal of tin and the particles were aggregated with other particles, causing a polycrystalline structure with various ring patterns corresponding to different planes of the tetragonal Sn. EDS element mapping of tin and oxygen were respectively indicated as having a red and green colour with a particle size of less than 100 nm. The overlapped mapping image of the two elements revealed that oxygen homogeneously covered tin particles, implying that oxygen was one of the elements composing the amorphous shell layer. The chemical state and bonding to other elements of oxygen will be closely discussed latter with the XPS results. In Fig. 3b, the composite deposited without bath agitation also showed a tin

core covered by an amorphous layer with a thickness of ca. 14nm and an irregular particle size of 100-500 nm. The d-spacing value of its core tin was not clearly shown, probably since the particles were too large for an electron beam to transmit throughout. An overlapped EDS mapping image of tin and oxygen indicated that the oxygen shell layer inhomogeneously covered the tin core. This inhomogeneous coating layer was also shown in another HR-TEM image (ESI†, Fig. S1c). It is believed that the large particle size hindered the homogeneous formation of the oxygen shell layer during the electrodeposition process without bath agitation.

The crystalline structure of the tin core in the as-prepared composites was also analysed by GIXRD patterns (ESI†, Fig. S2). Strong peaks at 30.6, 32.0, 43.8 and 44.9 that were assigned to 200, 101, 220 and 211 crystal planes and weak peaks at 55.3, 62.5, 63.7, 64.5, 72.4, 73.1, 79.4 and 89.4 that were assigned to 301, 112, 400, 321, 420, 411, 312 and 501 crystal planes, respectively, of the tetragonal phase tin were observed (JCPDS # 04-0673). The results validated that the core of both composite particles were composed of  $\beta$ -tin. Meanwhile, peaks at 23.1 and 35.5 appeared in Fig. S2b although they were not able to be assigned to stable phases of Sn.

In Fig. 4, XPS was analysed to examine the surface chemical state and the composition of the shell layer of as-prepared composites. O 1s spectra of the composites deposited with and without bath agitation showed deconvoluted curves with two and three main peaks, respectively (Fig. 4a and b). The identical peaks corresponding to oxygen atoms in carbonate and organic species at 531.7 eV were obtained from both composites<sup>22, 31, 32</sup>. The peak at 532.2 eV was attributed to the oxygen atom in O-C<sup>31</sup>. However, the deconvolution peaks assigned to 528.2 and 533.2 eV indicating Li<sub>2</sub>O and lithium alkyl carbonate (ROCO<sub>2</sub>Li) and/or lithium alkoxide (RCH<sub>2</sub>OLi) were obtained with only the composite deposited without bath agitation<sup>22, 33, 34</sup>. Similar result was constantly indicated by the C 1s spectra of both composites (Fig. 4c and d). The spectra were deconvoluted into three peaks. Among them, two peaks



**Fig. 5** XPS spectra of Sn 3d5 and Li 1s of the as-prepared Sn-O-C composite deposited with (a) and without (b) bath agitation. Ar ion etching was conducted for 30 sec with 3 sec interval.

assigned to an identical position at 284.8 and 286.2 eV, indicating carbon bonding in CH<sub>2</sub>-CH<sub>2</sub> and C-O, respectively, were obtained from both composites. However, a carbon atom that bonded to three oxygen atoms in the carbonate species that was assigned to 289.3 eV was indicated by only the composite deposited with bath agitation<sup>31,32</sup>. The carbon atom in lithium alkyl carbonate (ROCO<sub>2</sub>Li) and/or lithium alkoxide (RCH<sub>2</sub>OLi) assigned at 286.6 eV was also shown with only the composite deposited without bath agitation<sup>31-33</sup>. Fig. 4e and f indicated the XPS spectra of Cl 2p core peaks. A negligible peak with low intensity was shown in the result of the composite deposited with bath agitation. On the other hand, the composite deposited without bath agitation obviously showed two strong deconvoluted curves assigned to 199.4 and 201.1 eV indicating LiCl of Cl 2p<sub>3/2</sub> and Cl 2p<sub>1/2</sub>, respectively<sup>35</sup>. From these results, it is suggested that the shell layer of the Sn-O-C composite was produced by electrolyte decomposition during the deposition process, causing SEI formation. In particular, the SEI formation consisting of decomposition species of an organic carbonate solvent was obtained from the composite deposited with bath agitation, herein EC and PC. Conversely, the shell formation of the composite deposited without bath agitation was composed of not only decomposition species of an organic carbonate solvent but also inorganic compounds derived from reduction products of LiClO<sub>4</sub>, used as a supporting electrolyte, such as Li<sub>2</sub>O, lithium alkyl carbonate (ROCO<sub>2</sub>Li), lithium alkoxide (RCH<sub>2</sub>OLi) and LiCl. As discussed with morphological and structural characteristics, it was assumed that the chemical compositions of the deposits were also strongly affected by the bath agitation that enhanced mass transfer of the metal ion.

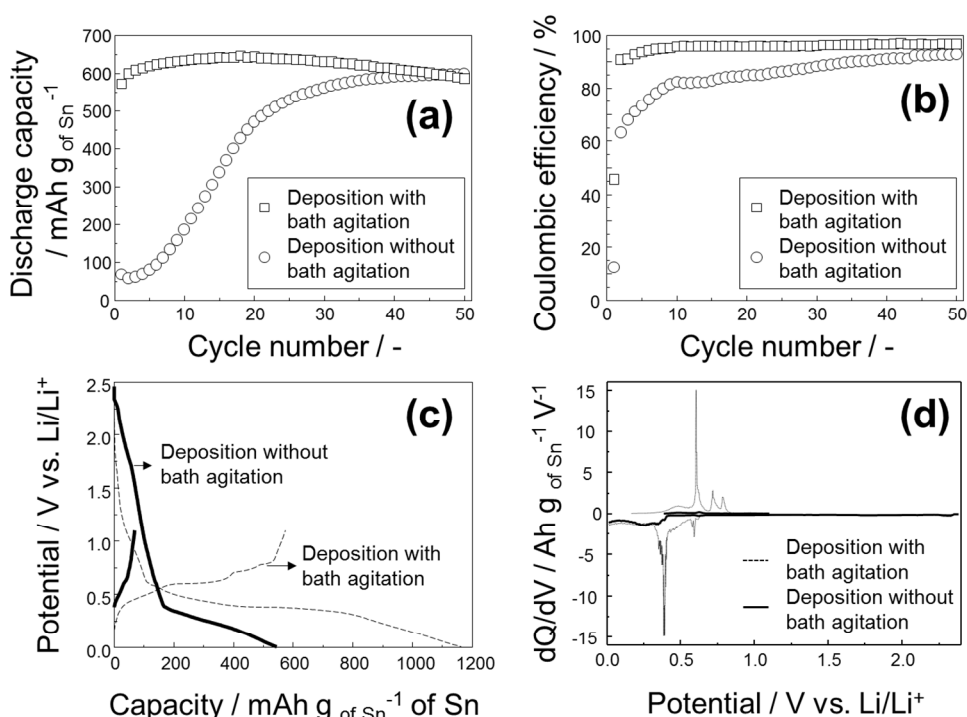
To summarize the structures of the composites, the core/shell structure of both Sn-O-C composites consisted of a Sn compound core with SEI formation of a shell layer that was derived from the electrolyte decomposition process. The chemical composition of the shell layer was differed by the deposition process either with or without bath agitation (i.e.,

decomposition compounds of an organic carbonate solvent for the composite deposited with bath agitation as opposed to decomposition compounds of an organic carbonate solvent accompanied by a reduction product of LiClO<sub>4</sub>), forming Li-rich compounds for the composite deposited without bath agitation.

For further investigation of the chemical structure and composition on the surface of the as-prepared composites, XPS spectra of Sn 3d5 and Li 1s were examined with Ar ion etching for a 30 sec with 3 sec intervals. In Fig. 5a, the composite deposited with bath agitation showed a strong peak of Sn 3d5 assigned to 484.8 eV, indicating metallic Sn (0) after the first Ar ion etching. Small satellite peaks at 486.6 eV corresponding to Sn (IV) were also shown during Ar ion etching for 30 sec<sup>31, 36, 37</sup>. However, Li 1s peak was not obtained during Ar ion etching for 30 sec. On the other hand, the composite deposited without bath agitation indicated a Sn 3d5 peak assigned to 484.8 eV showing a low peak intensity during the initial Ar ion etching time followed by a gradual increase with a further Ar ion etching time. A similar tendency was also obtained with a small satellite peak assigned to 486.6 eV. Furthermore, XPS spectra of Li 1s showed a strong peak during initial Ar ion etching, assigned to 56.2 eV indicating a Li atom in Li<sub>2</sub>O<sup>38</sup>. The intensity of this peak gradually decreased with the Ar ion etching time and finally disappeared after 30 sec of Ar ion etching. This result suggested that the Li-rich compounds existed on the surface of the Sn-O-C composite deposited without bath agitation.

To discuss the different chemical compositions of the as-prepared Sn-O-C composites, we need to recall the variations in ion concentrations and diffusion-layer thicknesses during the deposition process as discussed in Scheme 1. In our previous work, we reported that both Sn and Li ions were involved in the electrodeposition process at 0.3 V vs Li/Li<sup>+</sup><sup>26</sup>. Thus, it is required to take the diffusion-layer thickness variations of a Li ion into account along with those of the Sn ion. In the case of the deposition process without bath agitation, the diffusion-



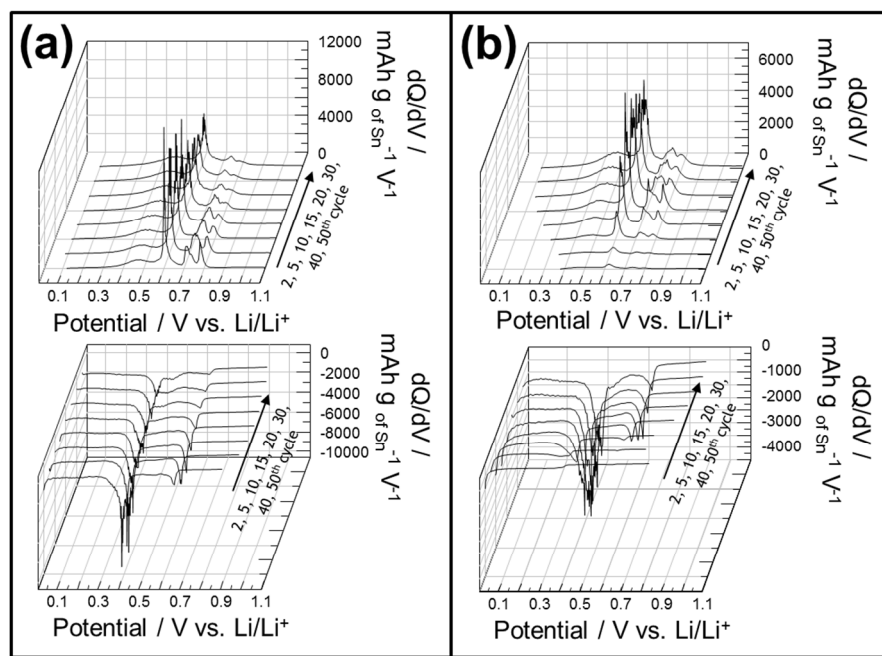


**Fig. 6** Plots of (a) charge/discharge capacity against the number of cycles, (b) their coulombic efficiency, (c) potential profile and (d) differential capacity plot at the 1st cycle.

layer would gradually thicken with deposition time, as discussed in Scheme 1b. The Sn ion concentration would decrease faster than that of the Li ion due to its low concentration in deposition bath and higher standard reduction potential. Consequently, the thicker diffusion-layer probably formed with the Sn ion rather than the Li ion. Thus, the Li ion could easily take part in the electrochemical reaction, resulting in a shell layer with SEI formation including reduction products of LiClO<sub>4</sub> forming Li-rich compounds, such as Li<sub>2</sub>O, lithium alkyl carbonate (ROCO<sub>2</sub>Li), lithium alkoxide (RCH<sub>2</sub>OLi) and LiCl as discussed with the XPS results. On the other hand, in the case of the deposition process with bath agitation, a constant diffusion-layer thickness of both metal ions could be conducted due to an enhanced convection by simple magnetic stirring, as discussed in Scheme 1a. Thus, a sufficient amount of Sn ion can be constantly supplied from the bulk electrolyte, giving rise to a more preferable electrochemical reduction of the Sn ion than that of the Li ion, which attained a chemical composition of the SEI layer mainly containing a decomposed organic solvent without Li-rich compounds derived from reduction products of LiClO<sub>4</sub>.

Both composites were electrochemically tested to investigate the influence of the distinct core/shell structure on the anode performance for lithium secondary batteries. Fig. 6a and b indicated cycle performances and coulombic efficiencies of both composites. In Fig. 6a, a high initial discharge capacity of 572 mAh g<sub>of Sn</sub><sup>-1</sup> at the 1st cycle was obtained from the composite deposited with bath agitation. A constant capacity value was prolonged with the highest discharge capacity of 646 mAh g<sub>of Sn</sub><sup>-1</sup> at the 18th cycle and 586 mAh g<sub>of Sn</sub><sup>-1</sup> at the 50th

cycle. On the other hand, cycle performances of the composite deposited without bath agitation delivered a poor initial capacity. The variation on the discharge capacity against the cycle number seems to be divided in to three stages: (i) a significantly low initial discharge capacity of 67 mAh g<sub>of Sn</sub><sup>-1</sup> from the 1st cycle until the 5th cycle, delivering a discharge capacity of 79 mAh g<sub>of Sn</sub><sup>-1</sup>; (ii) a gradually increase in the first stage to a discharge capacity of 560 mAh g<sub>of Sn</sub><sup>-1</sup> at the 30th cycle; (iii) and a stable stage up to the 50th cycle, delivering discharge capacity of 596 mAh g<sub>of Sn</sub><sup>-1</sup>. Low coulombic efficiencies of 45.9% and 12.4% were obtained at the 1st cycle from the composites deposited with and without bath agitation, and they increased up to 90.8% and 63.2% at the 2nd cycle, respectively. The considerably low coulombic efficiency at the 1st cycle was probably due to SEI formation and further reduction of the remaining oxide states of the active material<sup>25, 26, 39-43</sup>. The composite deposited with bath agitation indicated a coulombic efficiency of higher than 90% after the 2nd cycle and finally reached 96.8% at the 50th cycle. Conversely, a comparably low coulombic efficiency was obtained from the composite deposited without bath agitation showing a value higher than 90% after the 35th cycle followed by a gradual increase up to 93% at the 50th cycle. It is assumed that the Li-rich compounds in the SEI shell layer, such as Li<sub>2</sub>O, lithium alkyl carbonate (ROCO<sub>2</sub>Li), lithium alkoxide (RCH<sub>2</sub>OLi) and LiCl may be related to the low initial capacity along with retarded coulombic efficiency. It has been reported that a Li ion can pass through a media under two driving forces, such as an externally applied electric field and a concentration gradient of Li ion<sup>44</sup>. During lithiation, the positively charged ions move via



**Fig. 7** DCPs of the 2, 5, 10, 15, 20, 30, 40 and 50th charge/discharge cycles of the Sn-O-C composite deposited with (a) and without (b) bath agitation.

migration and diffusion through the electrolyte towards active material where they react and lithiate into a solid phase of active material particles. Then, the solid-state diffusion of Li ions is conducted with a driving force of a Li concentration gradient in the active material particles<sup>45</sup>. On the basis of this assumption, it is suggested that the Li-rich components in the shell layer of the composite deposited without bath agitation caused difficulty in the diffusion of the Li ion in the solid-state media, resulting in a low initial capacity. Thus, it is believed that the remarkably enhanced the initial capacity and coulombic efficiency of the composite deposited with bath agitation was achieved due to the compositions in its shell layer without Li-rich compounds, which allows Li ions to easily diffuse within the solid-state phase by a high Li concentration gradient<sup>46</sup>.

Figure 6c shows the potential profiles of the composites deposited with (dot line) and without (bold solid line) bath agitation. It is easily recognized that the composite deposited with bath agitation showed distinctive plateaus, indicating multi-electrochemical reactions during the charge/discharge cycle. However, the unclear plateaus were shown in the potential profile of the composite deposited without bath agitation. Furthermore, these results also indicated a high initiating potential of the delithiation process obtained at ca. 0.4 V, which assumed that the Li ion had difficulty completely diffusing into the solid-state of the active material, as aforementioned. To discuss the detailed investigation on the effects of distinctive composition in the shell layer on the electrochemical reaction between Li<sup>+</sup> ions and deposited Sn during cycling, differential capacity plots (DCPs) were analysed with the Sn-O-C composite deposited with and without bath agitation. The results are indicated in Fig. 6d along with the 1st charge/discharge cycle. The composite deposited

with bath agitation distinguishably showed a small cathodic peak at 0.6-0.7 V and a strong, sharp peak at 0.35 V derived from the phase transition of the Li<sub>x</sub>Sn alloying reaction. Four broad and sharp anodic peaks were also obviously shown at 0.5, 0.6, 0.7 and 0.8 V, implying the multistep nature of this phase change<sup>47, 48</sup>. However, the peaks corresponding to the phase transition of Li<sub>x</sub>Sn were scarcely recognizable with the composite deposited without bath agitation, which reveals that the electrochemical reaction during the 1st cycling was significantly suppressed. The 1st cycle of DCPs was enlarged by the selected y axis range [ESI†, Fig. S3], indicating several peaks of the composite deposited without bath agitation, which are hardly recognizable in Fig. 6d. Small and broad cathodic peaks at 0.6 and 0.3-0.4 V were obtained with four anodic peaks at 0.5-0.8 V, respectively, which implies that the phase transition reaction was carried out in spite of a significantly weak peak intensity compared to that of the composite deposited with bath agitation.

For further examination of the electrochemical reaction during cycling, the DCPs were plotted with the 2, 5, 10, 15, 20, 30, 40 and 50th charge/discharge cycles (Fig. 7). As discussed previously, distinctive cathodic and anodic peaks of DCPs for charge/discharge cycles were shown at the 2nd cycle and continued up to the 50th cycle from the composite deposited with bath agitation. The obvious peaks at the selected cycle indicated that the electrochemical reaction could be kinetically carried out during initial cycles with the composite deposited with bath agitation. Small peaks at 0.65 V for the charge process and 0.7, 0.8 V for the discharge process began to form a broad and indistinct peak, which was presumably attributed to the partially remaining alloy state of Li<sub>x</sub>Sn without complete delithiation after several tens of cycles<sup>25, 47, 48</sup>. Meanwhile, the

DCPs of the composite deposited without bath agitation showed significantly indistinct cathodic and anodic peaks during the 2nd and 5th charge/discharge cycles. Afterward, the DCPs indicated the gradual increase in peak intensity attained by the 10th, 15th and 20th cycles followed by a constant value at the 30th, 40th and 50th cycles. These results affirm improvement on the kinetics of the electrochemical reaction of the composite deposited without bath agitation with further cycling. These results also suggest that its electrochemical reaction during the 1st stage was probably suppressed by an inorganic passivating compound and Li-rich compounds in the shell layer. Furthermore, the larger particle size would lengthen the Li ion diffusion length. Nevertheless, the volume change of the active material may have undergone repeated charge/discharge cycles, causing the formation of cracks on the surface layer. Consequently, the electrolyte was able to permeate into the inner layer of active material, allowing the inside flesh Sn phases to react with the Li ions. Finally, a stable cycle performance was achieved after several tens of cycles (See Fig. S4, showing an increase in cracks with further cycles).

## Conclusions

We electrodeposited the Sn-O-C composite with a core/shell structure from an organic carbonate solvent via the potentiostatic technique with three consecutive steps including 2.3, 1.5 and 0.3 V vs Li/Li<sup>+</sup>. The Sn-O-C composite delivered a low initial discharge capacity of 67 mAh g<sub>of Sn</sub><sup>-1</sup> at the 1st cycle, which continued until the 5th cycle, delivering a discharge capacity of 79 mAh g<sub>of Sn</sub><sup>-1</sup> with 12.4% and 73.4% of coulombic efficiencies, respectively. After the 50th cycle, a discharge capacity of 596 mAh g<sub>of Sn</sub><sup>-1</sup> with a 93% of coulombic efficiency was obtained. The significantly poor initial capacity was derived from the deposition of Li-rich compounds such as Li<sub>2</sub>O, lithium alkyl carbonate (ROCO<sub>2</sub>Li), lithium alkoxide (RCH<sub>2</sub>OLi) and LiCl at the shell layer. In order to improve the low initial capacity and poor coulombic efficiency, modification of the chemical composition of the shell layer was conducted by implementing the agitation of the electrolyte with simple magnetic stirring during the electrodeposition process. It was suggested that a constant diffusion-layer thickness during the deposition process was attained from the enhancement of the convection by movement of the electrolyte itself. As a result, the shell layer consisting of a decomposition product from an organic carbonate solvent and a smaller particle size of the Sn-O-C composite was attained, delivering a discharge capacity of 572 mAh g<sub>of Sn</sub><sup>-1</sup> and 586 mAh g<sub>of Sn</sub><sup>-1</sup> at the 1st cycle and 50th cycle, respectively, with improved coulombic efficiency.

## Experimental

All the chemical reagents were purchased with an analytical grade and used as supplied. The electrodeposition bath was prepared by dissolving 2.5 mmol L<sup>-1</sup> SnCl<sub>2</sub> (Sigma-Aldrich) into 1.0 mol L<sup>-1</sup> of LiClO<sub>4</sub> in ethylene carbonate (EC) :

propylene carbonate (PC) (1 : 1 (v/v), Kishida, H<sub>2</sub>O content < 20 ppm).

A Ni plate with a dimension of 10 × 10 mm was used as a substrate for the electrodeposition of the Sn-O-C composite after ultra-sonication in trichloroethylene and ethanol followed by acid treatment with 10% HCl. A tin metal was used as a counter electrode. A lithium metal and EC:PC solution containing 1.0 mol L<sup>-1</sup> LiClO<sub>4</sub> were sealed in a glass tube by a glass flit to serve as a reference electrode.

All processes for the electrodeposition were performed in an argon-filled glove box at a dew point lower than -100 °C. The Sn-O-C composites were synthesized via a potentiostatic deposition technique with three consecutive steps at 2.3, 1.5 and 0.3 V vs Li/Li<sup>+</sup> by passing a charge quantity of 0.01, 0.04 and 0.21 C cm<sup>-2</sup>, respectively, using a potentiostat (Hokuto Denko, HZ-5000). The electrodeposition process was carried out either with or without electrolyte agitation using simple magnetic stirring at a rate of 700 rev. min<sup>-1</sup>. All the characteristics of the Sn-O-C composites electrodeposited either with or without electrolyte agitation were closely compared with each other.

The morphological observation and the crystalline structure analysis of the electrodeposited Sn-O-C composites were characterized by field emission scanning electron microscopy (FE-SEM, Hitachi, S-4500), grazing incidence X-ray diffraction (GIXRD, Rigaku, Rint-Ultima III) and field emission scanning transmittance electron microscopy (FE-STEM, JEOL, JEM-2100F) with energy dispersive X-ray spectroscopy (EDS, JEOL, JED-2300T) for element mapping. The surface chemical state was analysed by X-ray photoelectron spectroscopy (XPS, Physical Electronics, PHI 5000 VersaProbe) with Ar ion etching for 30 sec performed at a 3 sec intervals using 5 kV ion beam voltage. The C 1s hydrocarbon peak was set at 284.8 eV to correct binding energy. For the XPS measurement, the sample was taken in a transfer vessel in the glove box; afterward, it was moved and placed directly into the preparation chamber under vacuum conditions without contacting any atmosphere. The galvanostatic charge/discharge test of the Sn-O-C composite anodes deposited with or without bath agitation were conducted with a loading current of C/10, between 0.01 and 1.1 V vs Li/Li<sup>+</sup> using a charge/discharge unit (Hokuto Denko, HJ-1010M). A three-electrode system containing 1.0 mol L<sup>-1</sup> LiClO<sub>4</sub> in EC:PC (1 : 1 v/v) (Kishida, H<sub>2</sub>O content < 20 ppm) as an electrolyte and lithium foils as counter and reference electrodes was used.

## Acknowledgements

This work was partially supported by Advanced Low Carbon Technology Research and Development Program (JST-ALCA) Special Priority Research Area "Next-generation Rechargeable Battery".

## Notes and references

## ARTICLE

<sup>a</sup> Graduate School of Advanced Science and Engineering, Waseda University 3-4-1, Okubo, Shinjuku-ku, Tokyo 169-8555, Japan

<sup>b</sup> Faculty of Science and Engineering, Waseda University 3-4-1, Okubo, Shinjuku-ku, Tokyo 169-8555, Japan

Corresponding author:

Tel: +81-3-5286-3202, Fax: +81-3-3205-2074

e-mail: osakatets@waseda.jp (T.O.)

† Electronic Supplementary Information (ESI) available: [Detailed information of HR-TEM, SAED pattern, GIXRD, DCPs]. See DOI: 10.1039/b000000x/

- 1 K. T. Lee, Y. S. Jung and S. M. Oh, *J. Am. Chem. Soc.*, 2003, **125**, 5652.
- 2 Y. Yu, L. Gu, X. Lang, C. Zhu, T. Fujita, M. Chen and J. Maier, *Adv. Mater.*, 2011, **23**, 2443.
- 3 X. Li and C. Wang, *J. Mater. Chem. A*, 2013, **1**, 165.
- 4 D. D. Vaughn II, O. D. Hentz, S. Chen, D. Wang and R. E. Schaak, *Chem. Comm.*, 2012, **48**, 5608.
- 5 X. Zhao, M. Cao and C. Hu, *RSC Adv.*, 2012, **2**, 11737.
- 6 J. S. Chen, M. F. Ng, H. B. Wu, L. Zhang and X. W. Lou, *CrystEngComm*, 2012, **14**, 5133.
- 7 H. Mukaibo, T. Sumi, T. Yokoshima, T. Momma and T. Osaka, *Electrochem. Solid-State Lett.*, 2003, **6**, A218.
- 8 H. Mukaibo, T. Momma, M. Mohamedi and T. Osaka, *J. Electrochem. Soc.*, 2005, **152**, A560.
- 9 J. Chen, S.-J. Bull, S. Roy, H. Mukaibo, H. Nara, T. Momma, T. Osaka and Y. Shacham-Diamand, *J. Phys. D: Appl. Phys.*, 2008, **41**, 13.
- 10 S.-H. Ng, S.-Y. Chew, J.-Z. Wang, J. Chen, S.-X. Doua and H.-K. Llua, *Dalton Trans.*, 2009, 723.
- 11 H. Zhang, H. Song, X. Chen, J. Zhou and H. Zhang, *Electrochim. Acta*, 2012, **59**, 160.
- 12 W. Yue, S. Yang, Y. Ren and X. Yang, *Electrochim. Acta*, 2013, **92**, 412.
- 13 X. Li, Y. Zhong, M. Cai, M. P. Balogh, D. Wang, Y. Zhang, R. Li and X. Sun, *Electrochim. Acta*, 2013, **89**, 387.
- 14 Y. Xu, J. Guo and C. Wang, *J. Mater. Chem.*, 2012, **22**, 9562
- 15 H. Nara, Y. Fukuhara, A. Takai, M. Komatsu, H. Mukaibo, Y. Yamauchi, T. Momma, K. Kuroda and T. Osaka, *Chemistry Letters*, 2008, **37** (2), 142.
- 16 X. Li, X. Meng, J. Liu, D. Geng, Y. Zhang, M. N. Banis, Y. Li, J. Yang, R. Li, X. Sun, M. Cai and M. W. Verbrugge, *Adv. Funct. Mater.*, 2012, **22**, 1647.
- 17 X. Li, A. Dhanabalan, L. Gu and C. Wang, *Adv. Energy Mater.*, 2012, **2**, 238.
- 18 E. Paled, *J. Electrochem. Soc.*, 1979, **126** (12), 2047.
- 19 K. Kanamura, S. Shiraishi and Z.-I. Takehara, *J. Electrochem. Soc.*, 1994, **141** (9), L108.
- 20 D. Aurbach, I. Weissman, A. Schechter and H. Cohen, *Langmuir*, 1996, **12**, 3991.
- 21 K. Okita, K.-I. Ikeda, H. Sano, Y. Iriyama and H. Sakaebe, *J. Power Sources*, 2011, **196**, 2135.
- 22 B. Philippe, R. Dedryvère, J. Allouche, F. Lindgren, M. Gorgoi, H. Rensmo, D. Gonbeau and K. Edström, *Chem. Mater.*, 2012, **24**, 1107.
- 23 P. B. Balbuena and Y. Wang, *Lithium ion secondary batteries solid-electrolyte interphase*, Imperial College Press, 2004.
- 24 A. Funabiki, M. Inaba, T. Abe and Z. Ogumi, *J. Electrochem. Soc.*, 1999, **146** (7), 2443.
- 25 T. Momma, M. Jeong, T. Yokoshima, H. Nara, A. Toyoda and T. Osaka, *J. Power Sources*, 2013, **242**, 527.
- 26 M. Jeong, T. Yokoshima, H. Nara, T. Momma and T. Osaka, *J. Electrochem. Soc.*, 2014, **161**, D3025.
- 27 W. Chen, Y. He and W. Gao, *J. Electrochem. Soc.*, 2010, **157** (8), E122.
- 28 N. Kanani, *Electroplating: Basic Principles, Processes and Practice*, Elsevier Advanced Technology, Oxford, 2004.
- 29 Y. D. Gamburg and G. Zangari, *Theory and Practice of Metal Electrodeposition*, Springer, 2011.
- 30 M. Paunovic and M. Schlesinger, *Fundamentals of Electrochemical Deposition*, Wiley-Interscience, 2006.
- 31 J.-T. Li, J. Światowska, V. Maurice, A. Seyeux, L. Huang, S.-G. Sun and P. Marcus, *J. Phys. Chem. C*, 2011, **115**, 7012.
- 32 J. Światowska, V. Maurice, S. Zanna, L. Klein and P. Marcus, *Electrochim. Acta*, 2007, **52**, 5644.
- 33 S. Malmgren, K. Cioseka, M. Hahlina, T. Gustafssona, M. Gorgoi, H. Rensmo and K. Edström, *Electrochim. Acta*, 2013, **97**, 23.
- 34 L. Martina, H. Martinez, D. Poinot, B. Pecquenard and F. L. Cras, *J. Phys. Chem. C*, 2013, **117**, 4421.
- 35 J. F. Moulder, W. F. Stickle, P. E. Sobol and K. D. Bomben, *Handbook of X-ray photoelectron spectroscopy*, ULVAC-PHI, Inc., 1995.
- 36 B. Zhang, Y. Yu, Z. Huang, Y.-B. He, D. Jang, W.-S. Yoon, Y.-W. Mai, F. Kang and J.-K. Kim, *Energy Environ. Sci.*, 2012, **5**, 9895.
- 37 H. Zhang, H. Song, X. Chen and J. Zhou, *J. Phys. Chem. C*, 2012, **116**, 22774.
- 38 R. Younesi, S. Urbonaitė, K. Edström and M. Hahlin, *J. Phys. Chem. C*, 2012, **116**, 20673.
- 39 D. Aurbach, A. Nimberger, B. Markovsky, E. Levi, E. Sominski and A. Gedanken, *Chem. Mater.*, 2002, **14**, 4155.
- 40 J.-S. Bridel, S. Grugeon, S. Laruelle, J. Hassoun, P. Reale, B. Scrosati and J.-M. Tarascon, *J. Power Sources*, 2010, **195**, 2036.
- 41 T. Momma, S. Aoki, H. Nara, T. Yokoshima and T. Osaka, *Electrochem. Commun.*, 2011, **13**, 969.
- 42 H. Nara, T. Yokoshima, T. Momma and T. Osaka, *Energy Environ. Sci.*, 2012, **5**, 6500.
- 43 H. Nara, T. Yokoshima, M. Otaki, T. Momma and T. Osaka, *Electrochim. Acta*, 2013, **110**, 403.
- 44 M. Parka, X. Zhanga, M. Chunga, G. B. Lessa and A. M. Sastry, *J. Power Sources*, 2010, **195**, 7904.
- 45 K. Smith and C.-Y. Wang, *J. Power Sources*, 2006, **161**, 628.
- 46 J.-I. Lee, J.-H. Park, S.-Y. Lee and S. Park, *Phys. Chem. Chem. Phys.*, 2013, **15**, 7045.
- 47 M. Noh, Y. Kwon, H. Lee, J. Cho, Y. Kim and M. G. Kim, *Chem. Mater.*, 2005, **17**, 1926.
- 48 S.-L. Chou, X.-W. Gao, J.-Z. Wang, D. Wexler, Z.-X. Wang, L.-Q. Chend and H.-K. Liu, *Dalton Trans.*, 2011, **40**, 12801.