

NJC

Accepted Manuscript



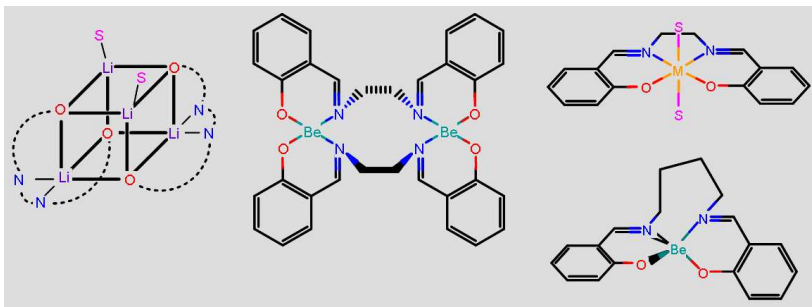
This is an *Accepted Manuscript*, which has been through the Royal Society of Chemistry peer review process and has been accepted for publication.

Accepted Manuscripts are published online shortly after acceptance, before technical editing, formatting and proof reading. Using this free service, authors can make their results available to the community, in citable form, before we publish the edited article. We will replace this *Accepted Manuscript* with the edited and formatted *Advance Article* as soon as it is available.

You can find more information about *Accepted Manuscripts* in the [Information for Authors](#).

Please note that technical editing may introduce minor changes to the text and/or graphics, which may alter content. The journal's standard [Terms & Conditions](#) and the [Ethical guidelines](#) still apply. In no event shall the Royal Society of Chemistry be held responsible for any errors or omissions in this *Accepted Manuscript* or any consequences arising from the use of any information it contains.

The structure of $(\text{BeSalen})_2$ is reported. The incompatibility of the geometry of beryllium with the inflexibility of the Salen gives rise to a rare dimeric motif.



Tetradentate Schiff base Beryllium complexes.

John Reglinski, Alan R. Kennedy and Graham Steel

Cite this: DOI: 10.1039/x0xx00000x

Received 00th January 2012,
Accepted 00th January 2012

DOI: 10.1039/x0xx00000x

www.rsc.org/

The structure of (BeSalen)₂ is reported. The incompatibility of the geometry of the beryllium with the inflexibility of the Salen ligand gives rise to a rare dimeric bis-didentate motif.

Symmetric tetradentate ligands such as Salen are typically used to occupy the four coordination sites of the meridial plane of a given metal centre.¹⁻³ Of all the structures in the CCDC database involving a Salen moiety remarkably few (~6) have the ligand coordinated bis-didentate to two metal centres. The ability to coax Salen out of its natural planar tetradentate motif requires a partner metal which is limited in its geometric preferences. Over 50 years ago two studies indicated that beryllium and Salen might have just such an interesting relationship.^{4,5} Considering our interest in the structures of complexes which arise from a mismatch of the geometric preferences of the ligand and metal we have chosen to re-visit the synthesis of beryllium Schiff bases and structurally characterise the compound first described over 50 years ago.⁴⁻⁷

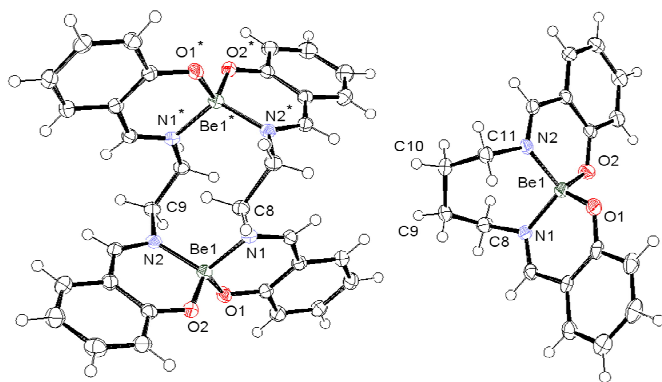


Fig. 1. X-ray structures of (BeSalen)₂ and BeSalbut. The thermal ellipsoids are drawn at 50%. Crystallographic data can be found in the table 1.

Abbreviations

Salen: N,N'-Bis(salicylidene)ethylenediamine
Salbut: N,N'-Bis(salicylidene)butylenediamine
BeSalen: Bis(salicylidene)ethylenediamine beryllium
BeSalbut: Bis(salicylidene)butylenediamine beryllium

Department of Pure and Applied Chemistry, WestChem University of Strathclyde, Glasgow G1 1XL, UK. Email: j.reglinski@strath.ac.uk

(BeSalen)₂ and BeSalbut were prepared from beryllium sulphate as previously described.^{4,5} Both compounds were crystallised and subjected to analysis by XRD methods (Fig. 1). The structure of (BeSalen)₂ obtained confirmed that the species is dimeric in nature. The tetrahedral nature of beryllium forces the Salen ligand to re-arrange such that the two phenolate/imine pairs coordinate to different metal centres. This simple motif is extremely rare and has only been observed in species where groups are present which affect the ability of the ligand to occupy the meridial plane.¹⁻³ Consistent with previous studies extending the di-imine chain to four carbons affords the ligand freedom to generate a tetrahedral environment thus allowing it to satisfy the needs of a single metal centre (Fig. 1).

The characterisation of these species completes a structural profile of Salen with the early metals (Fig.2). The Salen complexes of lithium and sodium are based on a M₄O₄ core.⁸ For divalent beryllium a simpler dimeric structure is obtained (Fig. 1). With the larger group II metals or by affording the ligand greater flexibility (e.g. BeSalbut) we observe a move to monomeric behaviour.⁹ In short we see clusters and cages giving way to polymers and dimers, concluding with simple monomeric species.

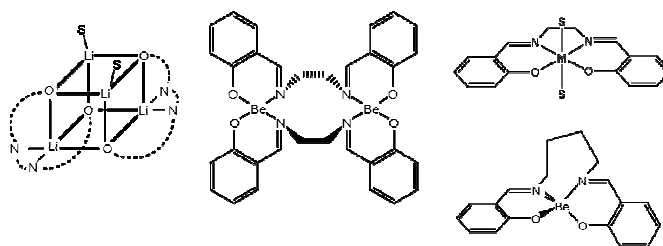


Fig. 2. An overview of the structural progression of simple Salen complexes.

The metrical parameters for the two tetradentate Schiff base compounds show great uniformity between the two structures and with other beryllium didentate Schiff base compounds (Table 1, Fig. 2).¹¹⁻¹³ The flexibility of Salbut allows the ligand to position itself in a tetrahedral motif. Salen achieves the same result by adopting a di-dentate motif with the ligands operating in concert.

In an attempt to understand the stability of the various forms of BeSalen (dimer vs monomer) we subjected the compound to analysis by *ab-initio* DFT calculations. We used the isolated dimer (Fig. 1) as a model of the dimeric form. On refinement

Bond distances $d/\text{\AA}$	(BeSalen) ₂	BeSalbut	CASDIK	CASDIP	NETCIY	QAQFIY	QAQFOE	SEWPAN	(BeSalen) ₂ Calc	BeSalen Calc
Be-O1	1.5794(17)	1.582(4)	1.560	1.564	1.583	1.598	1.572	1.573	1.593	1.591
Be-O2	1.5861(18)	1.583(4)	1.578	1.573	1.570	1.598	1.575	1.573	1.589	1.591
Be-N1	1.7331(18)	1.722(4)	1.754	1.748	1.777	1.698	1.726	1.747	1.755	1.750
Be-N2	1.7413(18)	1.727(4)	1.750	1.744	1.776	1.698	1.730	1.747	1.746	1.750
Bond angles (°)										
O1-Be-O2	113.60(10)	113.7(2)	116.07	116.31	115.12	115.28	117.86	114.33	117.56	110.77
O1-Be-N1	106.25(10)	106.2(2)	105.63	105.36	104.32	103.87	103.54	104.52	105.09	102.15
O1-Be-N2	110.63(10)	112.0(2)	112.02	112.10	109.93	110.59	109.08	111.17	106.69	125.92
O2-Be-N1	108.24(10)	115.5(2)	111.20	111.81	108.05	110.59	110.71	111.17	107.99	125.91
O2-Be-N2	105.62(10)	105.4(2)	103.92	105.4	104.55	103.87	104.00	104.52	105.27	102.15
N1-Be-N2	112.62(9)	103.8(2)	107.86	107.19	115.21	112.93	111.83	111.30	114.60	90.89

Table S2 The bond distances ($d/\text{\AA}$) and angles (°) for (BeSalen)₂, BeSalbut, Beryllium didentate Schiff base complexes and the calculated BeSalen species.¹¹⁻¹³

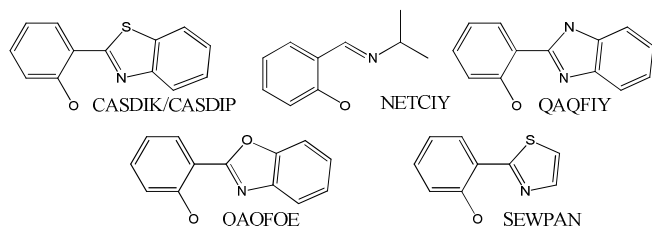


Fig. 2. Ligand motifs of the structurally characterised beryllium Schiff base compounds.¹¹⁻¹³

the total energy of (BeSalen)₂ was calculated to be -1786.16016811 a.u. Two monomers were also constructed. A tetrahedral form, M_T, was generated from the XRD structure of BeSalbut (Fig. 1). For this model the two carbons (C9, C10) were deleted in Gauss-View and C8 & C11 connected and moved to a distance commensurate with a single bond. A second, planar model (M_p) was constructed from the XRD structure of NiSalen, using the atomic coordinates obtained from the ccdc (FEYWEM) and by subsequently replacing the nickel by beryllium.¹⁴ These two models represent the geometric extremes of BeSalen. The two monomers, M_T and M_p, both refined to an identical tetragonally distorted structure (table 1) of total energy -893.06173121 a.u. For the necessary comparison the value of the energy obtained for the (BeSalen)₂ must be halved (i.e. -893.08008405 a.u.) to reflect the number of atoms present in the monomer. After this adjustment we can see that the observed dimeric structure is preferred over the monomeric form by 11.52 kcal/mole.

Experimental

Synthesis: Salen, Salbut, (BeSalen)₂ and BeSalbut were prepared using established methods.^{4,5,15}

BeSalbut crystallised directly from the cooling filtrate and was analysed as received. Expected for C₁₈H₁₈N₂BeO₂·H₂O: C, 67.28; H, 6.27; N 8.71% Found: C, 67.60; H, 6.13; N 9.27% ESI-MS [(BeSalbut)Na]⁺: 526 (90%), [(BeSalbut)₂H]⁺: 304 (100%), [(BeSO₄)₂]⁺: 210 (30%). ¹H NMR spectrum [400 MHz, DMSO, 25 °C] δ: 1.47 (br m, 2H, -CH₂), 2.08 (br m, 2H, -CH₂), 3.59 (br m, 4H, N-CH₂), 6.60 (br d 2H, arom J = 8 Hz: Influence of the ⁹Be centre: 100% abundant, I = 3/2), 6.64 (dt, 2H, arom J = 7 Hz; 1 Hz), 7.31 (dt, 2H, arom, J = 7.6 Hz; 2 Hz) 7.40 (dd, 2H, arom, J = 7.6 Hz; 2 Hz), 8.52 (s, 2H, -CH=N), XRD data: Monoclinic c1c1, a = 7.6771(10) Å, b = 17.9229(10) Å, c = 11.3182(12) Å, β = 98.385(14)°, V (Å³) 1540.69(32), Z = 4, r_{obs} = 0.0445, wR₂ = 0.0932.

(BeSalen)₂ was obtained directly from the cooling filtrate as a powder and was analysed as received. Crystals were grown from the slow evaporation of a dilute solution of (BeSalen)₂ in DMF. Expected for C₃₂H₂₈N₄Be₂O₄·H₂O: C, 67.60; H, 5.32; N 9.85% Found: C, 68.33; H, 5.36; N 9.93% ESI-MS [(BeSalen)₂Na]⁺: 573 (40%), [(BeSO₄)₃]⁺: 315

(100%), [(BeSalen)₂Na]⁺: 298 (25%), [(BeSalen)]⁺: 276 (15%). XRD data: Triclinic P-1, a = 8.5367(6) Å, b = 8.8067(6) Å, c = 10.1596(7) Å, α = 106.505(6)°, β = 92.538(6)°, γ = 97.889(6)°, V (Å³) 772.60(16), Z = 1, r_{obs} = 0.0361, wR₂ = 0.0935. Solubility insufficient for ¹H NMR spectroscopy

All DFT calculations were performed using the Gaussian09 program¹⁶ employing the B3LYP^{17, 18} functional using the 6-31++G(d, p) basis set. Geometry optimisations were performed with no symmetry constraints and vibrational mode analysis used to confirm the ground state of the monomeric species.

Notes and References

The reader is reminded of the toxicity of Beryllium (LD₅₀ 80 mg/kg in mice or rats as a sulfate).^{19, 20} Great care should be taken to avoid the production of dusts and aerosols (PEL 2 μg/m³).²⁰

The authors would like to acknowledge the EPSRC national crystallography service at the University of Southampton for data collection on (BeSalen)₂. Crystallographic data in CIF format is available from <http://ccdc.cam.ac.uk> on request quoting depository numbers ccdc 1031706 and 1031707.

- S. Mizukami, H. Houjou, K. Sugaya, E. Koyama, H. Tokuhisa, T. Sasaki and M. Kanesato, *Chem. Mater.*, 2005, **17**, 50.
- H. Torayama, T. Nishide, H. Asada, M. Fujiwara and T. Matsushita, *Polyhedron*, 1998, **17**, 105.
- M. R. Bernejo, A. Castineiras, J. C. Garcia-Monteagudo, M. Rey, A. Sousa, M. Watkinson, C. A. McAuliffe, R. G. Pritchard and R. L. Beddoes, *J. Chem. Soc. Dalton Trans.*, 1996, 2935
- R. W. Green and P. W. Alexander, *Aust. J. Chem.*, 1965, **18**, 1297.
- G. E. Batley and D. P. Graddon, *Aust. J. Chem.* 1968, **19**, 267.
- A. Mustapha, J. Reglinski, A. R. Kennedy, *Inorg. Chem. Commun.*, 2010, **13**, 464
- A. Mustapha, C. Busche, J. Reglinski and A. R. Kennedy, *Polyhedron*, 2011, **30**, 1530.
- S. C. Ball, I. Cragg-Hine, M. G. Davidson, R. P. Davies, M. I. Lopez-Solera, P. R. Raithby, D. Reed, R. Snaith and E. M. Vogl, *Chem. Commun.*, 1995, 2147
- A. Erxleben and D. Schumacher, *Eur. J. Inorg. Chem.*, 2001, 3039.
- Y-P. Tong, S-L. Zheng and X-M. Chen, *Inorg. Chem.*, 2005, **44**, 4270.
- Y-P. Tong, *Acta Crystallogr. E.*, 2005, **61**, m1472.
- F. Ceconi, E. Chinea, C. A. Ghilardi, S. Midollini and A. Orlandini, *Inorg. Chim. Acta*, 1997, **260**, 77.
- C. S. Oh, C. W. Lee and J. Y. Lee, *Chem. Commun.* 2013, **49**, 3875.
- X-L. Cheng, S. Gao, L-H. Huo and S. W. Ng, *Acta Crystallogr. Sect. E*, 2005, **61**, m385.
- J. Reglinski, S. Morris and D. E. Stevenson, *Polyhedron* 2002, **21**, 2167.
- Frisch, M. J.; et al Gaussian 09, Gaussian, Inc.: Wallingford, CT, USA, 2009.
- Becke, A. D., *J. Chem. Phys* 1993, **98**, 5648.
- Lee, C.; Yang, W.; Parr, R. G., *Phys. Rev. B* 1988, **37**, 785.
- L. A. Sazhina, *Gig. Sanit.*, 1965, **30**, 169.
- NIOSH publications and products. Centers for Disease Control and Prevention, Atlanta, USA www.cdc.gov/niosh/idlh/7440417.html

Journal Name

RSCPublishing

COMMUNICATION

New Journal of Chemistry Accepted Manuscript