

PCCP

Accepted Manuscript



This is an *Accepted Manuscript*, which has been through the Royal Society of Chemistry peer review process and has been accepted for publication.

Accepted Manuscripts are published online shortly after acceptance, before technical editing, formatting and proof reading. Using this free service, authors can make their results available to the community, in citable form, before we publish the edited article. We will replace this *Accepted Manuscript* with the edited and formatted *Advance Article* as soon as it is available.

You can find more information about *Accepted Manuscripts* in the [Information for Authors](#).

Please note that technical editing may introduce minor changes to the text and/or graphics, which may alter content. The journal's standard [Terms & Conditions](#) and the [Ethical guidelines](#) still apply. In no event shall the Royal Society of Chemistry be held responsible for any errors or omissions in this *Accepted Manuscript* or any consequences arising from the use of any information it contains.

Visible-Light Sensitization of Boron-Doped Nanocrystalline Diamond through Non-covalent Surface Modification

Hana Krysova^a, Zuzana Vlckova-Zivcova^a, Jan Barton^b, Vaclav Petrak^c, Milos Nesladek^d, Petr Cigler^{b*}, and Ladislav Kavan^{a*}

^a*J. Heyrovský Institute of Physical Chemistry, v.v.i. Academy of Sciences of the Czech Republic, Dolejskova 3, 18223 Prague 8, Czech Republic. E-mail: kavan@jh-inst.cas.cz*

^b*Institute of Organic Chemistry and Biochemistry, v.v.i. Academy of Sciences of the Czech Republic, Flemingovo nam. 2, 166 10 Prague 6, Czech Republic. E-mail: cigler@uochb.cas.cz*

^c*Institute of Physics, v.v.i. Academy of Sciences of the Czech Republic, Na Slovance 2, 182 21, Prague 8, Czech Republic*

^d*IMEC, IMOMECE Division, University Campus Hasselt, Wetenschapspark 1, B-3590 Diepenbeek, Belgium*

Abstract

Novel simple and versatile synthetic strategy is developed for the surface modification of boron-doped diamond. In a two-step procedure, polyethyleneimine is adsorbed on hydrogenated diamond surface and subsequently modified with a model light-harvesting donor- π -bridge-acceptor molecule (coded **P1**). The sensitized diamond exhibits stable cathodic photocurrents under visible-light illumination in aqueous electrolyte solution with dimethylviologen serving as electron mediator. In spite of the simplicity of the surface sensitization protocol, the photoelectrochemical performance is similar or better compared to that of other sensitized diamond electrodes which were reported in previous studies (2008-14).

INTRODUCTION

The sensitization of wide band-gap semiconductors to visible light is intensively studied in the area of n-doped electrode materials, such as TiO₂, where it makes a basis of the dye-sensitized solar cell (DSC), also called Graetzel cell.¹ The DSCs with titania photoanode and graphene cathode provided the solar conversion efficiencies as high as 13 %, which is the current record for this kind of devices.² Graphene is attractive for its optical transmittance, electrical conductivity and electrocatalytic activity in DSCs, where it successfully replaces the traditional cathode materials, such as platinum.²⁻⁶ However, both Pt and graphene represent the 'photoelectrochemically silent' cathodes, which means that they serve solely for the dark electron-transfer towards the electrolyte mediator, e.g. the I₃⁻/I⁻ or Co^{3+/2+} - complexes.

Attempts to replace this passive cathode in DSC by photoelectrochemically active p-type semiconductors are less frequently encountered in the literature, and the reported efficiencies are still low, compared to those of the classical (n-type) DSCs. The most successful material for an active photocathode is p-doped NiO, but the highest so far obtained efficiency of the p-DSC is

only 1.3 %.^{7,8} The final goal of these efforts is obviously a tandem device (p,n-DSC) in which both electrodes are the photoactive semiconductors. The tandem cells are attractive by their enhanced voltage, which is not controlled by the redox potential of the mediator anymore,⁹ but these cells cannot rival the efficiencies of the optimized n-DSCs at the moment.

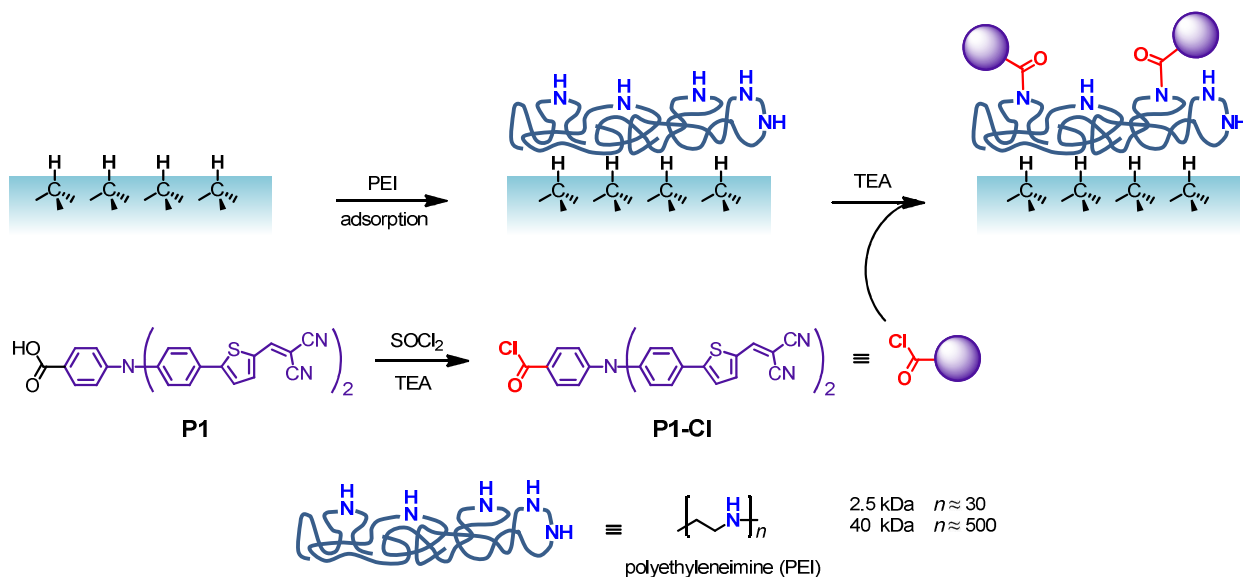
Among alternative photocathode materials, the B-doped nanocrystalline diamond (BDD) can be considered a promising replacement of p-NiO. Diamond films made by CVD are attractive by their excellent chemical and electrochemically stability, optical transparency and favorable electrical properties. The electrochemical inertness of BDD is beneficial in view of the corrosive nature of certain electrolyte solutions using, e.g. the I_3^-/I^- redox couple as the mediator, although the large charge-transfer resistance of BDD might be an issue.¹⁰ BDD has high hole diffusion coefficient (2-30 cm^2/s)¹¹, which compares auspiciously to the values for p-NiO (4×10^{-8} cm^2/s).¹² BDD is better optically transparent than p-NiO, approaching the optical quality of indium-tin oxide (ITO) at certain levels of doping.^{13,14}

Zhong et al.¹⁵ pioneered the spectral sensitization of BDD via a covalent functionalization by dicyanovinyl-bithiophene and C_{60} -bithiophene through Suzuki coupling to a H-terminated BDD. These electrodes provided photocurrents of ca 120 nA/cm^2 under white light (150 W halogen lamp) illumination in aqueous electrolyte solution containing dimethylviologen as the electron carrier. Later on, photocurrents of ca. 4-6 $\mu\text{A}/\text{cm}^2$ were observed in similar systems under 1 sun illumination (AM1.5G; 100 mW/cm^2).¹⁴ The same group reported on organic solar cells with poly(3-hexylthiophene) in which the O-terminated BDD successfully replaced the hole transporting layers such as PEDOT:PSS.¹³ Petkov et al.¹⁶ grafted manganese phthalocyanine on nanocrystalline BDD, and obtained photocurrents of several tens of nA/cm^2 upon monochromatic illumination with 770 nm light, but the currents were anodic (h^+ were assumed to be transferred to LUMO of the excited dye). For the same system, Bechter et al.¹⁷ observed cathodic photocurrent, as it is expected for the p-type BDD.

Recently, Yeap et al.¹⁸ functionalized the H-terminated BDD by a popular ruthenium dye, $\text{Ru}(\text{SCN})_2(\text{pbca})_2$ (pbca = 2,2'-bipyridine, 4,4'-dicarboxylate) which is commonly coded N3. They used a synthetic route with Suzuki coupling, and found a steady-state photocurrent of ca. 25 nA/cm^2 under white light illumination, 150 mW/cm^2 . Alternative photochemical synthetic protocol of surface grafting of Ru-complexes to BDD was developed by Hamers et al.^{10,19} However, the ruthenium dyes, which are excellent for sensitization of n- TiO_2 , do not seem to be optimal for the sensitization of BDD; one of the reasons might be that HOMO of these Ru-complexes lies too below the valence band edge of BDD.¹⁰ In another recent work, Yeap et al.²⁰ modified the diamond surface with thiophene derivatives through a combination of diazonium electrografting and Suzuki cross-coupling and observed photocurrents of ca. 150 nA/cm^2 under white light illumination, 15 mW/cm^2 .

A search for alternative dyes for sensitization of BDD points at the logical option of using molecules, which were previously successful in the sensitization of p-NiO.^{21,22} Here we explore the behavior of 4-(bis-{4-[5-(2,2-dicyano-vinyl)-thiophene-2-yl]-phenyl}-amino)-benzoic acid, coded as **P1**. This dye represents a donor- π -bridge-acceptor molecule, in which the triphenylamine unit acts as the electron donor, malononitrile unit as the electron acceptor and a thiophene moiety as the π -bridge (see Scheme 1 for the structure). Moreover, we address the

question whether a functional device can be created without direct covalent linkage of dye molecules to the H-terminated BDD surface. We therefore introduce a new sensitization approach based on non-covalent adsorption of polyethyleneimine (PEI). It is modified *in situ* by a reactive, amide-forming derivative of the **P1** dye which is coded **P1-Cl** (Scheme 1). An obvious advantage of this synthetic strategy is that it avoids the complicated multi-step surface chemistry, as well as the often observed poor yield of direct covalent anchoring of dyes.^{15-18,20}



Scheme 1: Non-covalent approach to sensitization of BDD surface. A PEI polymer is first adsorbed on hydrogenated BDD surface. The polymer is then functionalized using an acylchloride derivative of **P1** dye (coded **P1-Cl**) which reacts *in situ* with amine groups, forming amide linkages. TEA = triethylamine. Molecular weight is stated for PEI hydrochlorides.

EXPERIMENTAL SECTION

Preparation and characterization of BDD layers

Deposition of 0.5 μm thick BDD films was carried out in an ASTeX 5010 (Seki Technotron, Japan) Microwave Plasma Enhanced Chemical Vapor Deposition (MW PECVD) reactor. Fused silica substrates were nucleated with colloidal suspension of NanoAmando (NanoCarbon Research Institute Co., Japan) detonation diamond. Temperature during deposition was monitored by a Williamson Pro92 dual-wavelength pyrometer. The films were grown in conventional CH_4/H_2 plasma with pressure of 50 mBar. To decrease the amount of sp^2 carbon impurities, methane concentration was adjusted to be 1%. The substrate temperature was 720 $^\circ\text{C}$. Doping was induced by addition of trimethyl boron gas $\text{B}(\text{CH}_3)_3$ with a 4000 ppm B/C ratio in the gas phase, which translates into the B concentration in the bulk material of ca. $3 \cdot 10^{21}$ at/cm^3 .^{23,24} The film's conductivity was 345 S/cm (van der Pauw method). To ensure hydrogen termination, films were exposed to hydrogen plasma for 5 minutes and cooled down under hydrogen flow. The surface morphology of prepared samples was evaluated by tapping mode atomic force microscopy (AFM; Dimension ICON, Bruker) using silicon probes (OTESPA, Bruker, USA) with nominal force constant $k = 42$ N/m and a nominal resonant frequency $f = 320$

kHz. A typical AFM picture is shown in Fig. 1. The X-ray photoelectron spectroscopy (XPS) spectra were recorded using Omicron Nanotechnology instrument equipped with a monochromatized AlK α source (1486.7 eV) and a hemispherical analyzer operating in constant analyzer energy mode with a multichannel detector. The CasaXPS program was used for spectra analysis. Raman spectra were measured using a Renishaw InVia Raman Microscope, interfaced to an Olympus microscope (objective 50x) with an excitation wavelength of 725 nm. The spectrometer was calibrated by the F_{1g} mode of Si at 520.2 cm⁻¹.

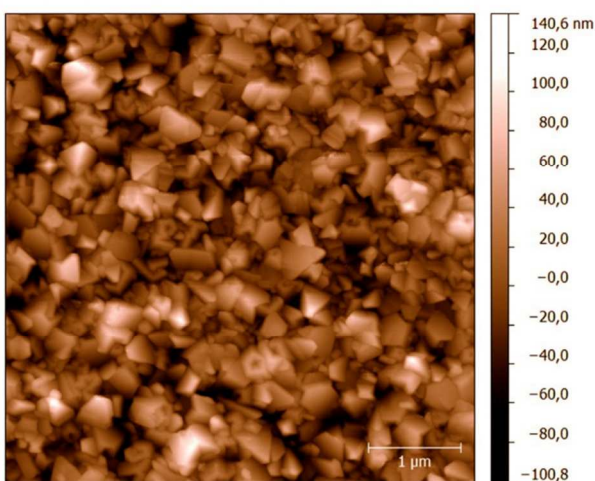


Figure 1. AFM picture of the used boron doped diamond (BDD) electrode.

Chemical syntheses

The **P1** dye was purchased from Dyenamo AB, Sweden. Linear polyethyleneimines “MAX” 2.5 kDa and 40 kDa (molecular weight is stated for hydrochlorides) were purchased from Polysciences, Inc. Other chemicals were supplied by Sigma-Aldrich and used as received. MilliQ water was used in all synthetic steps, and organic solvents were dried before use.

4-[bis[4-[5-(2,2-dicyanoethenyl)-2-thienyl]phenyl]amino]-benzoyl chloride (**P1-Cl**).

This molecule was synthesized as follows: **P1** (40.2 mg, 0.066 mmol) was dried for 30 minutes in vacuum in a 50 mL dry flask with magnetic stirrer. Under Ar atmosphere, 10 mL of dry dichloromethane (DCM) was added, followed by triethylamine (23.1 μ L, 0.166 mmol, 2.5 eq) and SOCl₂ (9.64 μ L, 0.133 mmol, 2 eq). The reaction mixture was stirred for 3 hours at room temperature. The solvent was evaporated and the solids were dispersed in 4 mL of dry tetrahydrofuran (THF). This dispersion was used directly in the next reaction step.

Modification of BDD films

The films (further coded **PEI 2.5** and **PEI 40**) were prepared from PEI of molecular weights 2.5 kDa and 40 kDa, respectively. The BDD sample was immersed into the aqueous solution of a PEI hydrochloride (200 mg/mL) and the film was left to rinse overnight at room temperature on a gel rocker. The film was washed with water (3x, then left in water for 20 min and washed once again) and dried under vacuum for 2 h at 70 °C. The dried film was immersed into 1 mL of dry THF containing 15 μ L of triethylamine. The dispersion of **P1-Cl** obtained in the previous step

was added (2 mL) and left rinse overnight at room temperature under Ar atmosphere on a gel rocker. The film was then washed with THF (3x, then left in THF for 20 minutes and washed once again), then with DCM (1x) and finally cleaned by a stream of air.

Electrochemistry

Electrochemical experiments were carried out in a one-compartment cell using Autolab PGstat-302N equipped with the FRA module (Ecochemie) controlled by a GPES-4 software. The BDD film was used as a working electrode (Ag contact with Au wire insulated by TorrSeal epoxy coating), platinum mesh was used as counter electrode and Ag/AgCl electrode (sat. KCl) was the reference electrode. Electrochemical impedance spectra were measured in the frequency range from 100 kHz to 0.1 Hz at varying bias voltages. All electrochemical measurements were performed in Ar atmosphere. Impedance spectra were evaluated using Zview (Scribner) software. For photoelectrochemical experiments, the cell was equipped with quartz optical window, and the electrode was illuminated by a white light source (Oriel Xenon lamp, model 6269) which was, in certain cases, monochromatized using the Newport $\frac{1}{4}$ m grating monochromator (model 77200). The light intensity was measured by a standard Si photodiode (PV Measurements, Inc. USA). Photoelectrochemical measurements were performed in an Ar-saturated 0.1 M Na₂SO₄ solution containing 5 mM dimethylviologen (MV²⁺), pH \approx 7. The counter electrode was platinum and the reference electrode was Ag/AgCl (sat. KCl). The photoelectrochemical cell was placed in a dark room and controlled by a potentiostat (micro-AutolabIII, Ecochemie, B.V. with GPES-4 software).

RESULTS AND DISCUSSION

The hydrogenated BDD surface provides several possibilities for its chemical modification.²⁵ Direct C–C bond has been explored as a stable link between molecules and the BDD surface.^{10,14,15,18-20,26-28} Reduction of diazonium salts^{14,15,18,20} and photochemically mediated addition of alkenes^{19,26-28} are among the most common procedures leading to the formation of C–C bond between the diamond surface and the corresponding molecule(s). We focused here on an alternative approach: a creation of thin layer of polymer adsorbed from a solution followed by an attachment of selectively reactive sensitizing dye.

A linear polymer PEI was selected, because it provides a convenient reactive platform for further modifications by amine-reactive dyes (see Scheme 1). Zhou et al.²⁹ found that a thin (1-10 nm) film of PEI could be physisorbed from solutions on various substrates. Specifically on BDD electrodes,³⁰ a thin (\approx 5 nm) polymer layer is adsorbed after dipping into an 1% aqueous solution of linear PEI (MW = 25 kDa). These experimental conditions are similar to ours (see Experimental Section). The adsorbed PEI layer can be further used for anchoring of other molecules, like DNA.^{30,31}

We took advantage of this type of modification, and prepared in a single step an acylchloride from the commercially available dye **P1**. Subsequently, we coupled the corresponding acylchloride, **P1-Cl** in the presence of triethylamine to PEI, yielding a non-covalently sensitized BDD surface. The corresponding samples are coded BDD-PEI 2.5-P1 or BDD-PEI 40-P1 for the films with PEI polymer carriers of different molecular weights (see Experimental Section).

The consecutive surface modification was followed by X-ray photoelectron spectroscopy (XPS) analysis (Table S1 and Figure S1 in Supplementary Information). The surface of blank BDD contains small amount of oxygen, but nitrogen is not detectable. In contrast, the spectra of both the PEI hydrochloride-modified samples (BDD-PEI 2.5-P1 and BDD-PEI 40-P1) show a significant N1s peak originating from PEI and Cl(2s, 2p) peaks originating from Cl⁻ as counterion for the PEI-amino groups. The intensity of N1s peak further reflects the molecular weight of the polymer: a stronger signal is observed for higher molecular weight. After modification with **P1** dye, the presence of S(2s, 2p) peaks was observed, indicating a successful incorporation of the dye in the polymer layer. The XPS analysis demonstrates that PEI can be efficiently anchored on BDD surface by a simple adsorption from solution and confirms the ability to functionalize the PEI using the **P1-Cl** reagent. Obviously, our approach can be used as a model protocol for simple attachment of other dyes with carboxylic groups, which are widely available.

Cyclic voltammetry of a blank BDD electrode shows solely the capacitive-like voltammogram in the electrochemical window between ca. -1 V and 1 V vs. Ag/AgCl (Figure 2). This is expected, considering the high overvoltages of both oxygen and hydrogen evolution in aqueous electrolyte solutions.³²

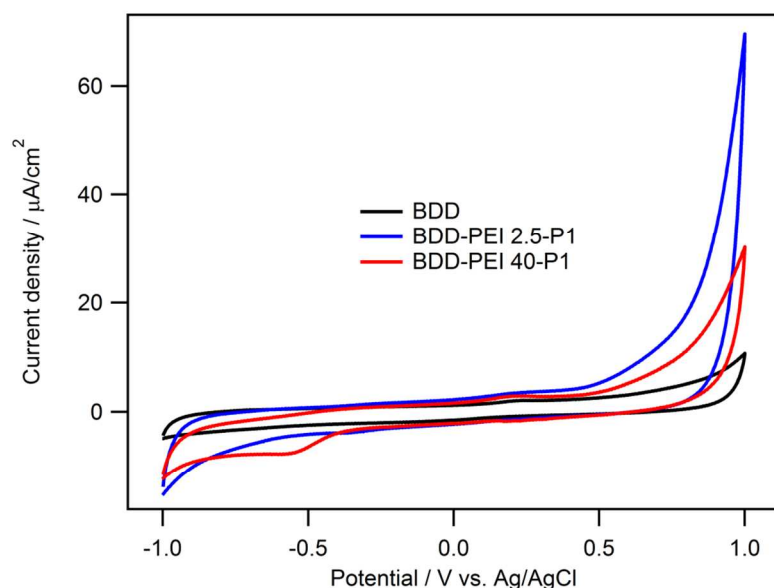


Figure 2. Cyclic voltammograms of the boron doped diamond (BDD) electrodes modified by the surface attachment of **P1** dye through two different PEI polymers. Electrolyte solution: phosphate buffer (pH 7), scan rate 100 mV/s.

For purely capacitive double-layer charging, the voltammetric current scales with the first power of scan rate²⁴:

$$i = dQ/dt = C dE/dt = C\nu, \quad (1)$$

Q is the voltammetric charge, C is capacitance and dE/dt is the scan rate, v . From the data in Figure 2, the capacitance C equals $11 \mu\text{F}/\text{cm}^2$, which is 3.7 times larger than the literature value of the double-layer capacitances of a flat surface of single crystal diamond (ca. $3 \mu\text{F}/\text{cm}^2$)³², but similar to values reported by others for polycrystalline BDD (ca. $10 \mu\text{F}/\text{cm}^2$)³³. The diamond grain size, film's roughness and the sp^2 impurity content are known to vary with methane concentration and the other parameters of the CVD deposition process.²⁴ The root mean square (RMS) surface roughness equals 29 nm from the AFM image shown above (Figure 1). Raman spectroscopy (Figure S2 in Supplementary information) confirms that content of sp^2 impurities is low. Our spectrum is well-comparable to that of the high-quality BDD films presented in Ref.²⁴

Anchoring of PEI 2.5-P1 and PEI 40-P1 to BDD does not significantly change the electrode capacitance, but causes strong enhancement of the currents near the limiting voltages in our voltammograms. In aprotic medium, the **P1** dye exhibits two distinct faradaic processes, corresponding to the oxidation of triphenylamine moiety and the thiophene ring, respectively. Qin et al.²¹ reported the oxidation and reduction potentials of **P1** to be: 1.375 V and -0.767 V, respectively vs. SHE (which is ca. 1.18 V and -0.97 V vs. Ag/AgCl). The corresponding redox waves of **P1** cannot be traced in Fig. 2, because they are located outside the vertex potentials of our voltammograms.

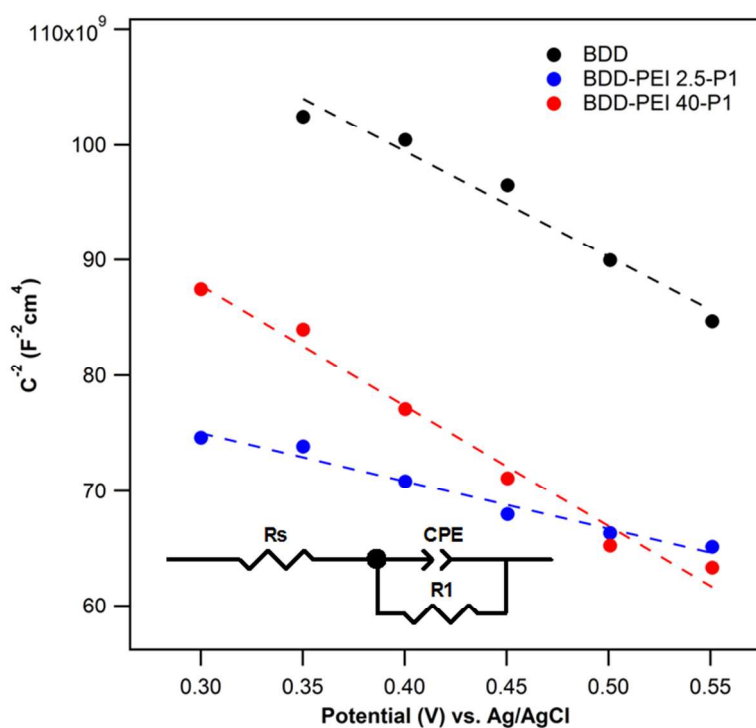


Figure 3. Mott-Schottky plots from electrochemical impedance spectra of the boron doped diamond (BDD) electrodes modified by the surface attachment of PEI polymer and **P1** dye. Electrolyte solution: phosphate buffer, pH 7. Inset shows the equivalent circuit used for fitting of the impedance spectra.

Further insight into electrochemical properties of our electrodes follows from the impedance spectroscopy. The spectra were fitted to the Randles-type equivalent circuit, which is shown in Figure 3 (inset). This circuit is a simplified version of the general model in which the Helmholtz capacitance and its corresponding parallel resistor are neglected.³²⁻³⁶ In our equivalent circuit, R_s is the ohmic resistance of electrolyte solution, electrodes, contacts etc. and the space charge capacitance is represented by a constant phase element, CPE with its associated charge-transfer resistance (R_1). The CPE is used here instead of pure capacitor^{33,37} because CPE describes more accurately the electrochemical interface on porous electrodes.^{34,35,38} These circuits were sometimes upgraded by adding the Warburg element to account for slow adsorption/desorption of ions at the diamond/electrolyte interface.³⁶ The impedance of a CPE equals:

$$Z_{\text{CPE}} = B(i\omega)^{-\beta} \quad (2)$$

where ω is the EIS frequency and B , β are the frequency-independent parameters of the CPE ($0 \leq \beta \leq 1$). The value of capacitance, C is obtained from Z_{CPE} as follows:

$$C = \frac{(R_1 \cdot B)^{1/\beta}}{R_1} \quad (3)$$

An obvious advantage of this evaluation protocol is that it removes the virtual ‘frequency dispersion’ of Mott-Schottky plots.^{39,40} This dispersion was often reported on various diamond electrodes,^{36,38,41,42} including the diamond electrodes which were modified by light-harvesting dyes.¹⁷ For the equivalent circuit shown in Figure 3 (inset), the capacitance C is equal to the capacitance of space-charge layer in the diamond electrode, that is $C = C_{\text{sc}}$.

Figure 3 shows the Mott-Schottky plots for blank BDD and for BDD modified by PEI-P1 assemblies. The Mott-Schottky equation used to analyze the data is:

$$\frac{1}{C_{\text{sc}}^2} = \left(\frac{2}{e\epsilon_0\epsilon_r N_A} \right) \left(\varphi - \varphi_{\text{FB}} - \frac{kT}{e} \right) \quad (4)$$

where C_{sc} is the capacitance of the space-charge (accumulation) region normalized to the electrode physical surface area, e is the electron charge, ϵ_0 is the permittivity of free space, ϵ_r is the dielectric constant of the electrode material (for diamond $\epsilon_r \approx 5.5$), N_A is the number of acceptors per unit volume, φ is the applied voltage, φ_{FB} is the flatband potential, k is Boltzmann’s constant and T is the temperature. The acceptor concentration in blank BDD equals $3.1 \cdot 10^{20} \text{ cm}^{-3}$, which is smaller than the assumed B-concentration from the synthetic conditions ($3 \cdot 10^{21} \text{ at/cm}^3$ see Experimental Section). The found smaller N_A value supports the observation by Ascheulov et al.²³ In this work, the concentration of holes, determined by Hall effect measurements, was also smaller than the B-concentration, and was tentatively attributed to the occurrence of B_2 dimers in the lattice. However, preferential enrichment of boron at defect sites should also be taken into account.⁴³ The found N_A values classify our BDD material to be at the border between semiconducting and quasi-metallic regime.^{23,32} Similar B-concentrations were used also in some earlier works aiming at BDD sensitization,^{13,14,18,20} but a narrow space charge region is assumed to exist even on these heavily-doped BDD electrodes.⁴⁴ If $\Delta\varphi$ is the potential difference across the space charge region, its thickness equals:

$$W = \left(\frac{2\Delta\phi\epsilon\epsilon_0}{eN_A} \right)^{1/2} \quad (5)$$

Eq. (5) gives $W = 2$ nm for our BDD electrode and $\Delta\phi = 1$ V. The chemically modified electrodes show the acceptor concentrations of $6.7 \cdot 10^{20} \text{ cm}^{-3}$ and $2.7 \cdot 10^{20} \text{ cm}^{-3}$ for the BDD-PEI 2.5-P1 and BDD-PEI 40-P1, respectively (Fig. 2). The flat band potential, ϕ_{FB} of blank BDD equals 1.5 V vs. Ag/AgCl which is a typical value for diamond electrodes found by electrochemical impedance³² and by other techniques, such as photocurrent onset measurement.⁴⁴ This flatband potential moves to 2.1 V and 1.1 V for the modified electrodes, BDD-PEI 2.5-P1 and BDD-PEI 40-P1, respectively. Qualitatively, we note that the high-molecular-weight polymer does not alter significantly the interfacial electron energetics, while the low-molecular-weight polymer does, but we skip further discussion of the difference.

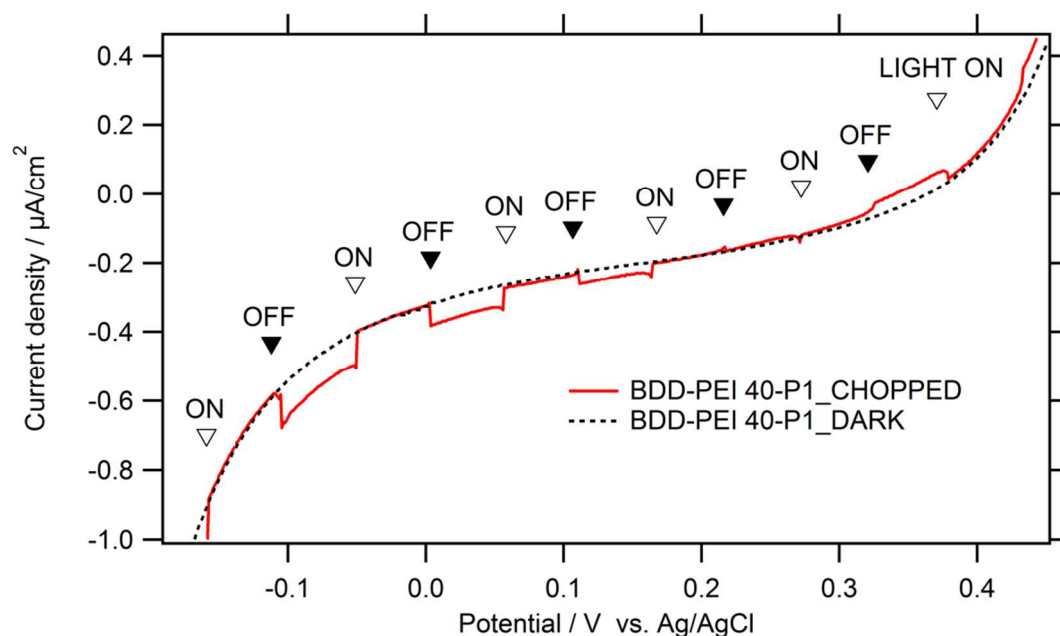


Figure 4. Current density/voltage plot for a BDD electrode sensitized with **P1** anchored to the PEI polymer. Electrolyte solution 0.1 M Na_2SO_4 containing 5 mM dimethylviologen. Illumination with chopped white light from a Xe-lamp (18 mW/cm^2). Scan rate 5 mV/s.

Figure 4 shows an example I-V plot for our sensitized BDD electrode in dark and upon illumination with chopped white light. The light intensity was 18 mW/cm^2 , which is roughly 18 % of the solar radiation intensity (AM 1.5 G). The test was carried out in aqueous electrolyte solution containing dimethylviologen (MV^{2+}) as an electron carrier. This electrolyte solution was chosen to match the typical experimental conditions which were used in the earlier tests of sensitized diamonds.^{15,17,18,20,45} We observe cathodic photocurrents occurring at potentials negative to ca. 0.2 V, superimposed on a large dark current. At potentials positive to ca. 0.3 V, the photocurrents switch to anodic for unknown reasons. Similar switching between

anodic/cathodic photocurrents seems to be expressed also with the BDD electrode sensitized by bithiophene, but this effect was not commented in the source work.¹⁴ The occurrence of anodic photocurrents has been occasionally observed even on the blank BDD, but again their origin remains uncertain.⁴⁴

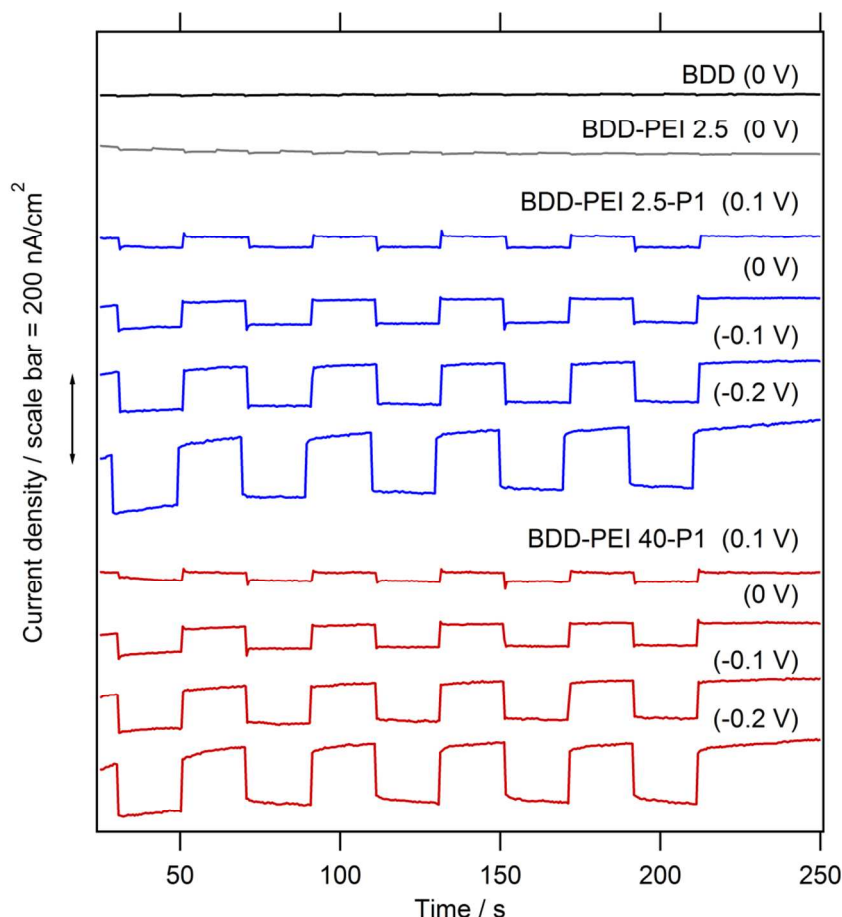


Figure 5. Chronoamperometric plot at various bias voltages (indicated in labels in V vs. Ag/AgCl) for BDD electrodes sensitized with **P1** which was anchored through two different PEI polymers. The blank BDD and BDD covered solely with PEI (without P1) were also tested for reference, and the corresponding plots are shown on top of the chart. Electrolyte solution 0.1 M Na₂SO₄ containing 5 mM dimethylviologen. Illumination with chopped white light (18 mW/cm²). Curves are offset for clarity, but the current density scale is identical in all cases.

The occurrence of cathodic photocurrent confirms the standard light harvesting mechanism typical for the sensitized p-semiconductors. More specifically, the light excitation generates electron-hole pairs in the donor- π -bridge-acceptor molecules (**P1**). Subsequently, the exciton dissociates efficiently thanks to the favorable molecular structure of **P1**, and the separated electrons flow to the MV²⁺ (dimethylviologen) electron carrier which is present in the electrolyte solution. In turn, the photoexcited holes move to the cathode surface and are injected into the valence band of BDD.^{15,17,18,20,45} It is certainly notable that the polymer carrier (PEI), which is assumed to be an electronic insulator, does not impede the hole-injection from **P1** into the

diamond electrode. Presumably, the polymer layer is either so thin that the hole tunneling can occur, or the specific structure of PEI-P1 assembly allows that certain **P1** molecules can approach the surface and contact it directly (cf. Scheme 1).

Figure 5 shows details of the response of our electrodes to white light (18 mW/cm²) at various bias voltages. In contrast to the previously discussed experiment, the plot in Fig. 5 is chronoamperometric, i.e. the voltage is constant, and the light is chopped in approx. 20 s intervals. At the used experimental conditions, the blank BDD shows almost no photocurrents (note slightly faster chopping for better visualization in this case). Closer inspection of Fig. 5 reveals cathodic photocurrents of ca. 5-10 nA/cm² at the blank BDD, in accord with the earlier study.²⁰ The existence of cathodic photocurrent under sub-bandgap illumination of blank BDD has been previously ascribed to either sp² impurities or to specific states related to B in the lattice.⁴⁴ In spite of its unclear origin, the onset of cathodic photocurrent transients allows the determination of flatband potential including its pH-dependence and the effects of surface oxidation.⁴⁴

The blank BDD covered by a pure PEI polymer (without P1) exhibits similarly small photocurrents like the bare BDD. Hence, PEI does not induce any additional photoelectrochemical activity to the BDD surface, but it serves as an intermediate layer for chemical anchoring of P1 (Scheme 1). Furthermore, PEI film is known to decrease the work function of various substrates, such as metals, metal oxides, conducting polymers and graphene.²⁹ Recently, this effect on ITO (indium tin oxide) was used for engineering of the electron-extraction interfaces in the perovskite solar cell.⁴⁶ The lowering of work function would impede the hole injection, but further discussion of the BDD-PEI interaction is beyond the scope of this work.

The surface sensitization with PEI-P1 conjugate gives rise to stable photocurrents of ca. 100-150 nA/cm² at -0.2 V bias. These photocurrents are by an order of magnitude larger than those of the reference blank electrodes (BDD and BDD-PEI) which confirms that sensitization with P1 does occur. Our results compare favorably to those reported recently for the N3-sensitized diamond.¹⁸ In spite of the fact that our light intensity is here ca. 8 times smaller, we trace photocurrents, which are ca. 5 times larger than those in Ref.¹⁸ Furthermore, our photocurrent response exhibits good stability, which again outperforms the behavior of the N3-sensitized diamond.¹⁸ Similar response, both in terms of stability and photocurrent values, was observed for the diamond sensitized by molecular wires with bithiophene and cyclopentadithiophene moieties anchored by Suzuki cross-coupling reactions.²⁰

Figure 6 shows the plot of incident photon-to-current conversion efficiency (IPCE) of our electrodes. It is defined by the equation:

$$IPCE = \frac{i_{ph} h\nu}{Pe} \quad (6)$$

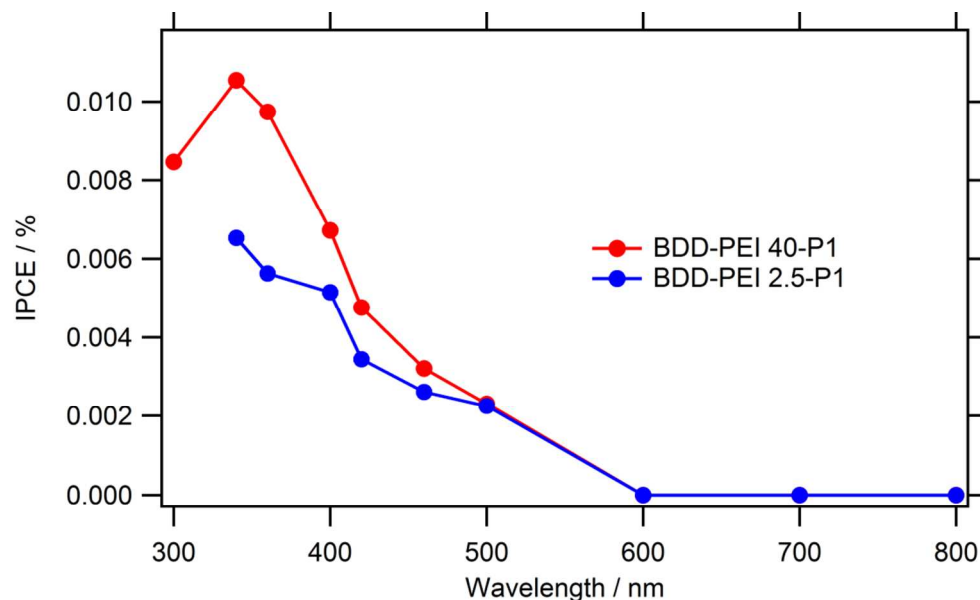


Figure 6: IPCE spectrum at -0.2 V bias for BDD electrodes sensitized with **P1** anchored via two different PEI polymers. Electrolyte solution 0.1 M Na₂SO₄ containing 5 mM dimethylviologen.

where i_{ph} is the photocurrent density, h is Planck's constant, ν is the photon frequency, P is the incident light power and e is electron charge. For a flat sensitized surface, the maximum accessible *IPCE* is a product of quantum yield of hole injection (or electron injection in the case of n-semiconductors) from the photoexcited dye, η_{inj} and the light-harvesting efficiency, which is given by the dye extinction coefficient ϵ and the dye surface coverage Γ .

$$IPCE = \eta_{inj} (1 - 10^{-\Gamma \epsilon}) \quad (7)$$

For instance, the N3 dye has $\epsilon = 1.27 \cdot 10^7$ cm²/mol at $\lambda_{max} = 530$ nm, and $\Gamma \approx 0.55$ molecules/nm² for a monolayer coverage, which provides the theoretical *IPCE* = 0.27% on a flat surface assuming $\eta_{inj} = 100\%$ (Eq. 7). Experimental value for a single crystal TiO₂ anatase was 0.11%.⁴⁷ Our BDD films also show quite flat surface, and we can estimate the roughness factor of ca. 4 from the double-layer capacitance, *vide infra*. Our experimental *IPCE* (Fig. 6) is ca. 10 times smaller despite the extinction coefficient of **P1** is larger. (**P1** has two absorption bands with peaks at 345 and 468 nm, and the extinction coefficient, $\epsilon_{468} = 5.8 \cdot 10^7$ cm²/mol.) The difference can be attributed to smaller surface coverage of our electrodes and/or to some other imperfections existing on the diamond surface, but we leave this point open at this stage of our research. Qualitatively, our spectrum in Fig. 6 resembles the *IPCE* plot for the **P1**-dye sensitized p-NiO.²¹ In the latter case, an onset was observed at ca. 650 nm with a broad maximum between 550 to 450 nm extending to 350 nm.²¹

Our *IPCEs* and photocurrents are similar or better to those, observed by others for the sensitized BDD electrodes.^{14-16,18} Furthermore, they compare favorably to values, which were reported in the pioneering works on the sensitization of TiO₂. More specifically, Goodenough et al.^{48,49} anchored Ru(bipy)₂(bpc) complex (similar to N3) to the flat surface of titania and reported

photocurrents of several nA under white light ($450 < \lambda / \text{nm} < 650$) illumination from a 150 W Xe-lamp.⁴⁸ Obviously, three decades of research on the optimization of this system provided the current performance of ca. 20 mA/cm² under 1 sun illumination¹, in spite of the fact, that the surface chemistry of the state-of-art DSCs and of these early systems are quite similar. We believe, that systematic optimization of the solar cells with the BDD photocathodes will bring adequate improvement, too. This optimization should focus both at the electrode surface morphology, enhancement of the dye-coverage per projected area, and the fine tuning of interfacial electronic and electrochemical properties. The palette of tasks includes both the electrolyte/mediator optimization and tuning of electronic properties (e.g. doping level) of the BDD electrode.

CONCLUSIONS

Novel simple and versatile synthetic strategy was developed for the surface modification of boron-doped diamond with a model light-harvesting donor- π -bridge-acceptor molecule (coded **P1**). The synthetic protocol is based on the use of adsorbed polyethyleneimine (PEI) as a carrier efficiently connecting the diamond surface with the **P1** dye.

The **P1**-sensitized diamond exhibits stable cathodic photocurrents of ca. 100-150 nA/cm² at small cathodic bias (-0.2 V vs. Ag/AgCl) and white light illumination (18 mW/cm²) in aqueous electrolyte solution with dimethylviologen serving as electron mediator. However, the found IPCEs ($\approx < 0.01$ %) are still far below those, expected for a monolayer of **P1** on the flat surface.

This is ascribed to a low roughness factor of the diamond surface causing limited surface coverage by the sensitizer molecules and to the non-optimized electrolyte/mediator system. Nevertheless, our P1-PEI-sensitized diamond exhibits a photoelectrochemical performance, which is similar or better compared to that reported in most other studies of covalently sensitized diamond electrodes (2008-14) and in the pioneering works on the n-TiO₂ sensitization.

ACKNOWLEDGEMENT

This work was supported by the Grant Agency of the Czech Republic (contract No. 13-31783S).

Electronic Supplementary Information (ESI) available:
X-ray photoelectron and Raman spectra of BDD electrodes

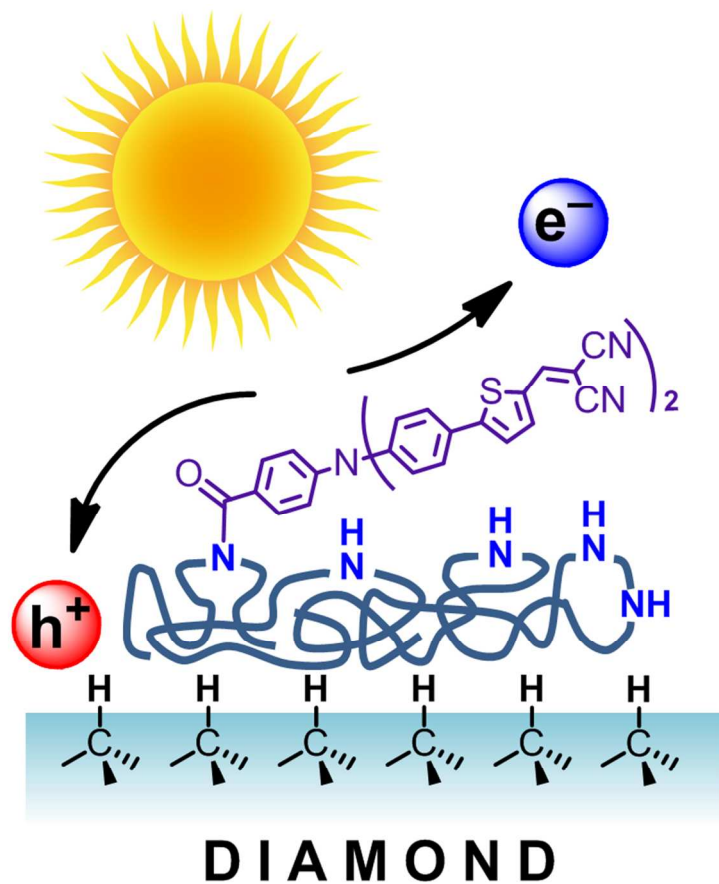
References

1. A. Hagfeldt, G. Boschloo, L. Sun, L. Kloo and H. Pettersson, *Chem. Rev.* 2010, **110**, 6595.
2. S. Mathew, A. Yella, P. Gao, R. Humphry-Baker, B.F.E. Curdoch, N.A. Astani, I. Tavernelli, U. Rothlisberher, M.K. Nazeeruddin and M. Grätzel, *Nat. Chem.* 2014, **6**, 242.
3. S. Ahmad, E. Guillen, L. Kavan, M. Grätzel and M.K. Nazeeruddin, *Energy Environ. Sci.* 2013, **6**, 3439.
4. L. Kavan, J.-H. Yum and M. Grätzel, *Electrochim. Acta* 2014, **128**, 349.
5. L. Kavan, J.-H. Yum and M. Grätzel, *ACS Appl. Mater. Interfaces* 2012, **4**, 6999.
6. L. Kavan, *Top. Curr. Chem.* 2014, **348**, 53.
7. H. Tian, J. Oscarsson, E. Gabrielsson, S.K. Eriksson, R. Lindblad, B. Xu, Y. Hao, G. Boschloo, E.M.J. Johansson, J.M. Gardner, A. Hagfeldt, H. Rensmo and L. Sun, *Sci. Rep.* 2014, **4**, 4282.
8. S. Powar, T. Daeneke, M.T. Ma, D. Fu, N.W. Duffy, G. Goetz, M. Weideler, A. Mishra, P. Baeuerle, L. Spiccia and U. Bach, *Angew. Chem. Int. Ed.* 2013, **52**, 602.
9. A. Nattestad, A.J. Mozer, M.K.R. Fischer, Y.B. Cheng, A. Mishra, P. Baeuerle and U. Bach, *Nat. Mater.* 2010, **9**, 31.
10. I. Zegkinoglou, P.L. Cook, P.S. Johnson, W. Yang, J. Guo, D. Pickup, R. Gonzalez-Moreno, C. Rogero, R.E. Ruther, M.L. Rigsby, J.E. Ortega, R.J. Hamers and F.J. Himpsel, *J. Phys. Chem. C* 2012, **116**, 13877.
11. S.D. Janssens, P. Pobodinskas, J. Vacik, V. Petrikova, B. Ruttens, J. D'Haen, M. Nesladek, K. Haenen and P. Wagner, *New. J. Phys.* 2011, **13**, 083008.
12. S. Mori, S. Fukuda, S. Sumikura, Y. Takeda, Y. Tamaki, E. Suzuki and T. Abe, *J. Phys. Chem. C* 2008, **112**, 16134.
13. C.H.Y.X. Lim, Y.L. Zhong, S. Janssens, M. Nesladek and K.P. Loh, *Adv. Funct. Mater.* 2010, **20**, 1313.
14. Y.L. Zhong, A. Midya, Z. Ng, Z.K. Chen, M. Daenen, M. Nesladek and K.P. Loh, *J. Am. Chem. Soc.* 2008, **130**, 17218.
15. Y.L. Zhong, K.P. Loh, A. Midya and Z.K. Chen, *Chem. Mater.* 2008, **20**, 3137.
16. C. Petkov, U. Glebe, E. Petkov, A. Pasquarelli, C. Pietzka, M. Veres, L. Himics, R. Merz, W. Kulisch, U. Siemeling, J.P. Reithmaier and C. Popov, *Phys. Stat. Sol. A* 2013, **210**, 2048.
17. J. Bechter, C. Pietzka, C. Petkov, P. Reintanz, U. Siemeling, C. Popov and A. Pasquarelli, *Phys. Stat. Sol. (a)* 7-1-2014, DOI 10.1002/pssa.201431223, n/a.
18. W.S. Yeap, X. Liu, D. Bevk, A. Pasquarelli, L. Lutsen, M. Fahlman, W. Maes and K. Haenen, *ACS Appl. Mat. Interfaces* 2014, **6**, 10322.
19. R.E. Ruther, M.L. Rigsby, J.B. Gerken, S.R. Hogendoorn, E.C. Landis, S.S. Stahl and R.J. Hamers, *J. Am. Chem. Soc.* 2011, **133**, 5692.
20. S.W. Yeap, D. Bevk, X. Liu, H. Krysova, A. Pasquarelli, D. Vanderzande, L. Lutsen, L. Kavan, M. Fahlman, W. Maes and K. Haenen, *RCS Adv.* 2014, **4**, 42044.
21. P. Qin, H. Zhu, T. Edvinsson, G. Boschloo, A. Hagfeldt and L. Sun, *J. Am. Chem. Soc.* 2008, **130**, 8570.
22. P. Qin, J. Wiberg, E.A. Gibson, M. Linder, L. Li, T. Brinck, A. Hagfeldt, B. Albinsson and L. Sun, *J. Phys. Chem. C* 2010, **114**, 4738.

23. P. Ascheulov, J. Sebera, A. Kovalenko, V. Petrak, F. Fendrych, M. Nesladek, A. Taylor, Z. Vlckova-Zivcova, O. Frank, L. Kavan, M. Dracinsky, P. Hubik, J. Vacik, I. Kraus and I. Kratochvilová, *Eur. Phys. J. B* 2013, **86**, 443.
24. Z. Vlckova-Zivcova, O. Frank, V. Petrak, H. Tarabkova, J. Vacik, M. Nesladek and L. Kavan, *Electrochim. Acta* 2013, **18**, 518.
25. S. Szunerits and R. Boukherroub, *J. Solid State Electrochem.* 2008, **12**, 1205.
26. A. Härtl, E. Schmich, J.A. Garrido, J. Hernando, S.C.R. Catharino, S. Walter, P. Feulner, A. Kromka, D. Steinmüller and M. Stutzmann, *Nature Mat.* 2004, **3**, 736.
27. W. Yang, O. Auciello, J.E. Butler, W. Cai, J.A. Carlisle, J. Gerbi, D.M. Gruen, T. Knickerbocker, T.L. Lasseter, J. Russell, L.M. Smith and R.J. Hamers, *Nature Mat.* 2002, **1**, 253.
28. X. Wang, P.E. Colavita, J.A. Streifer, J.E. Butler and R.J. Hamers, *J. Phys. Chem. C* 2010, **114**, 4067.
29. Y. Zhou, C. Fuentes-Hernandez, J. Shim, J. Meyer, A.J. Giordano, H. Li, P. Winget, T. Papadopoulos, H. Cheun, J. Kim, M. Fenoll, A. Dindar, W. Haske, E. Najafabadi, T.M. Khan, H. Sojoudi, S. Barlow, S. Graham, J.L. Bredas, S.R. Marder, A. Kahn and B. Kippelen, *Science* 2012, **336**, 327.
30. J. Weng, J. Zhang, H. Li, L. Sun, C. Lin and Q. Zhang, *Anal. Chem.* 2008, **80**, 7075.
31. X.Q. Zhang, M. Chen, R. Lam, X. Xu, E. Osawa and D. Ho, *ACS Nano* 2009, **3**, 2609.
32. Fujishima, A., Einaga, Y., Rao, T. N., and Tryk, D. A., *Diamond Electrochemistry*, Elsevier, Tokyo,, 2005.
33. J. Scharpf, A. Denisenko, C. Pietzka and E. Kohn, *Diamond Rel. Mater.* 2011, **20**, 1250.
34. W. Yang, J.E. Butler, J. Russell and R.J. Hamers, *Langmuir* 2004, **20**, 6778.
35. H. Gu, X.D. Su and K.P. Loh, *J. Phys. Chem. B* 2005, **109**, 13611.
36. J.A. Garrido, S. Nowy, A. Hartl and M. Stutzmann, *Langmuir* 2008, **24**, 3897.
37. Y. Pleskov, Y. Evstefeeva, M.D. Krotova, V.Y. Mishuk, V.A. Laptev, Y. Palyanov and Y. Borzdov, *J. Electrochem. Soc.* 2002, **149**, E260-E264.
38. M.D. Krotova, Y.V. Pleskov, A.A. Khomich, V.G. Ralchenko, D.N. Sovyk and V.A. Kazakov, *Russ. J. Electrochem.* 2014, **50**, 101.
39. L. Kavan, M. Zukalova, O. Vik and D. Havlicek, *Chemphyschem* 2014, **15**, 1056.
40. L. Kavan, N. Tetreault, T. Moehl and M. Grätzel, *J. Phys. Chem. C* 2014, **118**, 16408.
41. G. Pastor-Moreno and D.J. Riley, *Electrochim. Acta* 2002, **47**, 2589.
42. L. Boonma, T. Yano, D.A. Tryk, K. Hashimoto and A. Fujishima, *J. Electrochem. Soc.* 1997, **144**, L142-L145.
43. Y.G. Lu, S. Turnaer, J. Verbeeck, S.D. Janssens, P. Wagner, K. Haenen and G. Van Tendeloo, *Appl. Phys. Lett.* 2012, **101**, 041907.
44. S.J. Green, L.S.A. Mahe, D.R. Rosseinsky and C.P. Winlove, *Electrochim. Acta* 2013, **107**, 111.
45. N.C.D. Nath, S. Sarker, A.J.S. Ahammad and J.J. Lee, *Phys. Chem. Chem. Phys.* 2012, **14**, 4333.
46. H. Zhou, Q. Chen, G. Li, S. Luo, T.B. Song, H.S. Duan, Z. Hong, J. You, Y. Liu and Y. Yang, *Science* 2014, **345**, 542.
47. L. Kavan, M. Grätzel, S.E. Gilbert, C. Klemenz and H.J. Scheel, *J. Am. Chem. Soc.* 1996, **118**, 6716.
48. M.P. Dare-Edwards, J.B. Goodenough, A. Hamnett, K.R. Seddon and R.D. Wright, *Discuss. Farad. Soc.* 1980, **70**, 285.

49. S. Anderson, E.C. Constable, M.P. Dare-Edwards, J.B. Goodenough, A. Hamnett, K.R. Seddon and R.D. Wright, *Nature* 1979, **280**, 571.

TOC Graphic



TOC Text: Boron-doped diamond electrode is efficiently sensitized by a light-harvesting molecule using facile and versatile synthetic method.