

# CrystEngComm

Accepted Manuscript



This is an *Accepted Manuscript*, which has been through the Royal Society of Chemistry peer review process and has been accepted for publication.

*Accepted Manuscripts* are published online shortly after acceptance, before technical editing, formatting and proof reading. Using this free service, authors can make their results available to the community, in citable form, before we publish the edited article. We will replace this *Accepted Manuscript* with the edited and formatted *Advance Article* as soon as it is available.

You can find more information about *Accepted Manuscripts* in the [Information for Authors](#).

Please note that technical editing may introduce minor changes to the text and/or graphics, which may alter content. The journal's standard [Terms & Conditions](#) and the [Ethical guidelines](#) still apply. In no event shall the Royal Society of Chemistry be held responsible for any errors or omissions in this *Accepted Manuscript* or any consequences arising from the use of any information it contains.

# Conformational adaptations of acyclic receptor templated by weakly coordinating anions

Cite this: DOI: 10.1039/x0xx00000x

I. Đilović<sup>a,\*</sup> and K. Užarević<sup>b,c,\*</sup>

Received 00th January 2012,

Accepted 00th January 2012

DOI: 10.1039/x0xx00000x

www.rsc.org/

Crystallization from methanol solutions resulted in new supramolecular complexes of a flexible polyamine receptor *N,N'*-3-azapentane-1,5-bis[3-(1-aminoethylidene)-6-methyl-3*H*-pyran-2,4-dione] (**L**) with spherical ( $\text{Br}^-$  and  $\text{I}^-$ ), linear ( $\text{SCN}^-$ ) or pyramidal ( $\text{ClO}_3^-$ ) anions. The recognition and self-assembly processes yielded five solids: solvated (**1a**) and non-solvated (**1b**) forms of  $\text{HL}:\text{SCN}^-$  complex with quite different receptor conformations, a supramolecular complex with  $\text{ClO}_3^-$  anion (**3**), which is isoskeletal to **1b**, and a  $\text{HL}:\text{Br}^-$  (**2**) and  $\text{HL}:\text{I}^-$  complexes which are isoskeletal to **1a**. It is shown that the rich coordinating potential of the anions investigated arises not only from their geometry, but also from their ambivalent accepting functionalities. The divergence in the way binding occurs is reflected on supramolecular synthons stabilizing crystal structures as well as on the physicochemical properties of the obtained solids. In these systems anion binding could be interpreted as a competition between two „solvation spheres“, one provided by the solvent molecules and the other dominated by high-order supramolecular receptors built from HL molecules. This behaviour is related to previously reported complexes of HL with trigonal, tetrahedral and octahedral anions, emphasizing the receptor's conformational adaptability for providing the most favourable surrounding for guest inclusion in the rigid environment of a crystal.

## Introduction

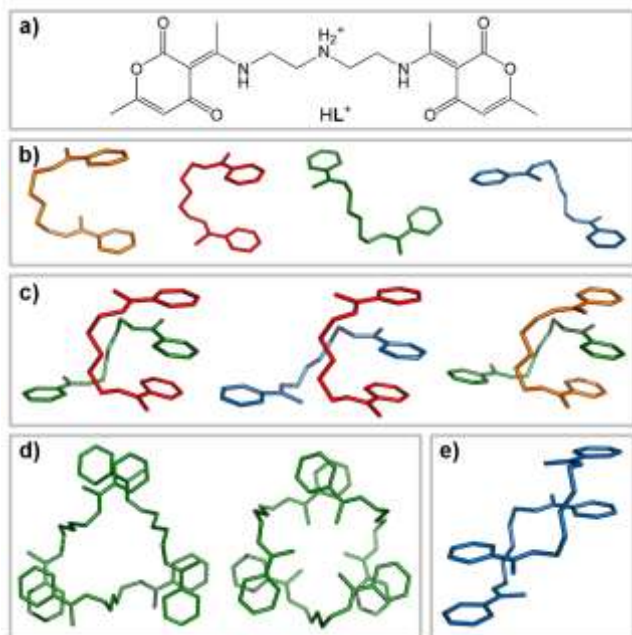
The design of artificial receptors which are able to recognize, to bind, to sense and/or to transport guest molecules is attracting increasing attention.<sup>1</sup> A great variety of preorganized and rigid anion receptors has been studied, as these systems often display high peak-selectivity in solution.<sup>2</sup> The second class of often studied receptors comprises those with the ability to change their conformation in order to respond to the specific demands of the anionic template (geometry, charge density, pH dependent behaviour etc.).<sup>3</sup> These receptors often have lower binding constants in contrast to their rigid analogues, but they showed strong potential in the development of various functional supramolecular systems,<sup>4</sup> from sensors and signallers<sup>5</sup> to more effective rigid receptors.<sup>6</sup> In this context, the study of the interaction modes between the flexible receptor and flexible or multifaceted anions (such as linear thiocyanate or pyramidal chlorate) could prove especially interesting, and lead to further developments in the field.

In our recent studies of binding of environmentally relevant anions, flexible polyamine receptor HL (Scheme 1a) was found to display a remarkable adaptability towards diverse inorganic or organic anions, with high peak-selectivity for hydrogenmaleate, sulphate and nitrate.<sup>11-13</sup> Two principal sets of the receptor conformations were observed in obtained crystal structures, denoted as *C*- and *Z*- conformers (Scheme 1b). Occasionally, a single HL molecule served as a receptor for a single anion (hydrogenmaleate or *o*-phthalate), but more often, HL cations assembled to supramolecular receptors, in order to achieve complementarity for specific anion(s). The observed

supramolecules include discrete *CZ*-dimers, various *Z*-trimers and supramolecular polymers (Scheme 1c-e). Hydrophilic anions (trigonal  $\text{NO}_3^-$  and tetrahedral  $\text{SO}_4^{2-}$ ) were excluded from the competitive mixtures by a self-assembly of three HL molecules into a pseudo-macrocyclic, with the anion encapsulated inside the formed receptor supramolecule by 12 strong N–H...O hydrogen bond interactions (Scheme 1d, left).<sup>11</sup> On the other hand, perchlorate anion ( $\text{ClO}_4^-$ ), which is geometrically identical to sulphate but with lower charge density, templates the self-assembly of three HL cations into a new supramolecular receptor with vacant interior, and the binding is achieved by weak C–H donor groups (Scheme 1d, right).<sup>12a</sup> The same binding mode was found for other hydrophobic anions ( $\text{HSO}_3^-$ ,  $\text{IO}_4^-$ ,  $\text{PF}_6^-$ ,  $\text{SbF}_6^-$ ) which were encapsulated in similar hydrophobic pockets of the emerged crystal structure.<sup>12a</sup> In the systems studied,<sup>11-12</sup> HL proved highly sensitive to the geometry and charge density of the anionic guest. Selectivity in separation has usually been achieved only upon crystallization, emphasizing the importance of intermolecular interactions in rigid crystal environment which lock the conformation of the host. The same supramolecular concept was also transferred to solvent-free mechanochemical discrimination between isomeric organic acids.<sup>13</sup>

Herein we study the complexation modes of the receptor HL with spherical ( $\text{Br}^-$  and  $\text{I}^-$ ) and multifaceted linear ( $\text{SCN}^-$ ) or pyramidal ( $\text{ClO}_3^-$ ) anions. The structural investigations on two forms of  $\text{HL}:\text{SCN}^-$  complexes (**1a** and **1b**) have shown that neither anion geometry nor the overall charge are decisive for the final folding-mode of the receptor. The results indicate that

the type of accepting groups on anion also plays an important role in the occurring type of complex. The interplay between anion coordination ambivalence and receptor conformational/binding versatility results in different host-guest interactions and supramolecular architectures, where the receptor molecules assemble to polymeric chains (as in **1a** and **2** – with  $\text{SCN}^-$ ,  $\text{Br}^-$  and  $\text{I}^-$ ) or dimers (**1b** and **3** – with  $\text{SCN}^-$  and  $\text{ClO}_3^-$ ). To rationalize our structural observations, detailed overview of Cambridge Structural Database (CSD)<sup>14</sup> and Protein Data Bank (PDB)<sup>15</sup> was made and the results were compared with already known host/protein and  $\text{SCN}^-$  supramolecular complexes.



**Scheme 1.** a) Protonated polyamine receptor HL. b) In complexes with anions HL adopts different conformers depending of the relative orientation of methyl groups – *syn-C* (orange), *anti-C* (red), *syn-Z* (green) and *anti-Z* (blue). The conformers assemble in high-order supramolecular receptors [as in c) or d)] or supramolecular polymers [in e)]. Hydrogen atoms and anions were omitted for clarity.

## Results and discussion

Crystalline products **1a** and **1b** were obtained from self-assembly between **L** and ammonium thiocyanate in acidified methanol (both **1a** and **1b**) or ethanol (**1b** exclusively) solutions. From methanol, occurrence of respective phase was related with time needed for crystallization. The slow evaporation and prolonged duration of crystallization resulted in exclusive occurrence of the solvated phase, **1a**, whereas the fast crystallization from highly concentrated methanol solutions yielded **1b**. From ethanol, crystallization would proceed swiftly (in a matter of minutes) and **1b** was harvested in all cases. Reactions were also attempted in acetonitrile and acetone, where the ligand,  $\text{NH}_4\text{SCN}$  and *p*-toluenesulfonic acid are readily soluble. However, from these solvents solid ammonium *p*-toluenesulfonate was yielded. Complexes with bromide and

chlorate anions, **2** and **3** respectively, were yielded by reacting equimolar amounts of **L** and HBr or  $\text{HClO}_3$  in methanol. Colourless crystals of forms **1a**, **2** and **3** desolvated and fell apart in air while **1b** was stable, even on 80 °C. Complex of HL with iodide anions was prepared by the procedure similar to **1a**, but obtained crystals were not suitable to conduct a thorough structural analysis and will therefore be excluded from detailed discussion. However, the derived structural model was sufficient to establish the unit cell parameters and the arrangement of the receptor molecules, which is very similar to that of the bromide complex **2** and the **1a** form of  $\text{SCN}^-$  complex. The IR spectra of bromide and iodide complexes are in a good agreement, further suggesting that the same supramolecular synthon is present in the solid phase (for more details please refer to Supplementary Information).

### Crystal Structure Description.

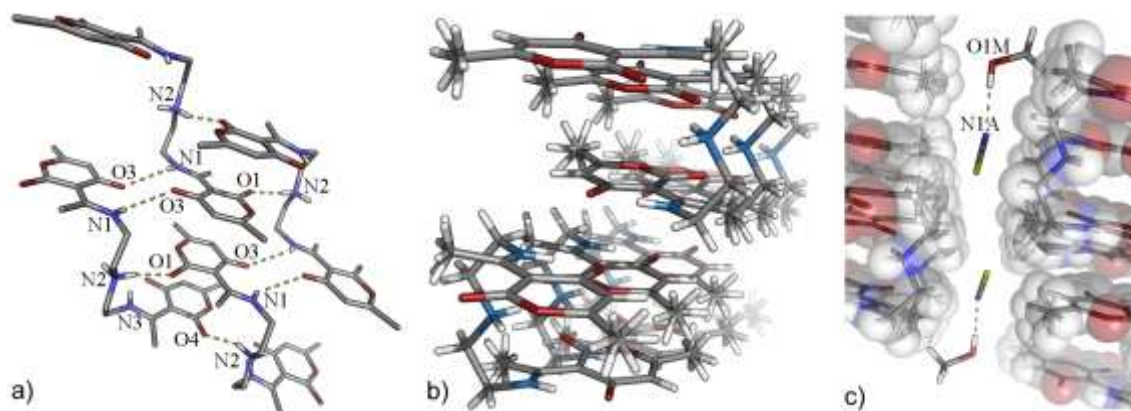
In four crystal structures, three distinguishable HL conformers were found. In **1b** and **3**, *syn-C* and *syn-Z* conformers assemble to CZ-dimers which serve for anion binding [Scheme 1c (far right) and Figure 2]. In **1a** and **2**, on the other hand, *syn-Z* conformers occur exclusively, building [*syn-Z*...*syn-Z*]<sub>n</sub> supramolecular polymers through the rich pattern of noncovalent interactions. The key structural parameters (bond lengths, hydrogen-bonding geometry) are given in Tables S1–S8 in the Supplementary Information.

**Supramolecular polymers for anion exclusion.** In complexes with  $\text{SCN}^-$  (**1a**) and  $\text{Br}^-$  (**2**), exclusively *syn-Z* conformers self-assemble to a new kind of polymeric host for a complexation of  $\text{SCN}^-$  and  $\text{Br}^-$  anions (Figure 1). Central amino  $-\text{NH}_2^+$  group acts as a HB-bridge between two distinct pyrone oxygen atoms [O1 and O4, 2.715(4) and 2.698(4) Å, respectively] in a one-dimensional chain. Neighbouring chains are further connected by the N1–H1...O3 [3.042(4) Å] and N2–H2...O6 [3.091(4) Å] hydrogen bonds [ $R^2_2(12)$  type] and pyrone  $\pi$ ... $\pi$  interactions [3.454(2) and 3.265(2) Å]. This layer-like arrangement of HL molecules saturates the strong N–H donors and creates large C–H rich “walls”, parallel to the crystallographic *ac* plane, in which the anions are accommodated. These hydrophobic regions are also habited by the solvent methanol molecules which anchor the  $\text{SCN}^-$  by the strong hydrogen bonds [O1M–H1M...N1A, 2.837(5) Å]. The other side of  $\text{SCN}^-$  is coordinated using preferentially weaker C–H...S1A and C–H...C1A interactions from HL. A picture emerges in which anion binding could be interpreted as a competition between two „solvation spheres“, one provided by the solvent molecule and the other dominated by a highly ordered supramolecular receptors built from HL cations. The bromide complex **2** is isostructural to **1a** (for the details check the experimental section).

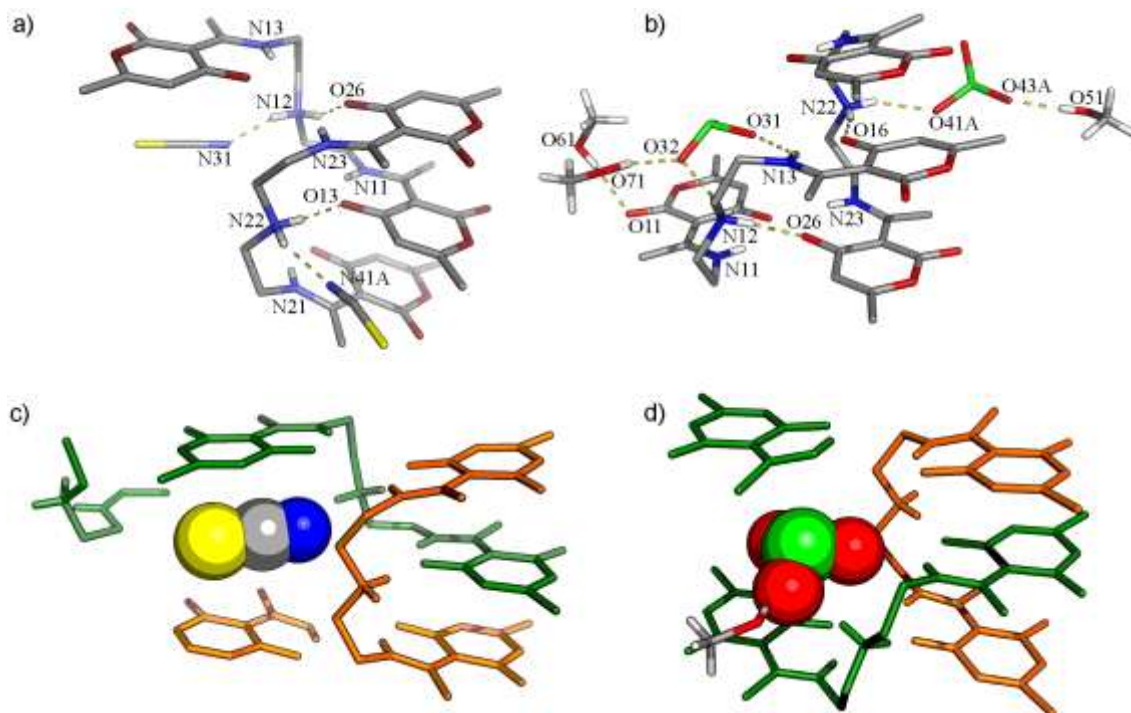
**Anion encapsulation by CZ-dimers.** In both crystal structures **1b** and **3**, dimers are made of *syn-C* and *syn-Z* conformers constructing interpenetrating chains (mutually held by C–H...O and C–H... $\pi$  interactions) which are capable to encapsulate anions in the emerged voids (Figure 2). In a single chain of **1b**, *syn-C* conformers act as a  $\pi$ -molecular tweezer for a *syn-Z*

conformers, which are anchored by a strong charge-assisted hydrogen bond [N22–H22A $\cdots$ O13, 2.792(3) Å]. It seems again<sup>13</sup> that the formation of tweezers is advantageous for planar HB-acceptors. Central  $\text{–NH}_2^+$  group is the best donor and with the best acceptor (pyrone O13-atom) forms a short intermolecular hydrogen bond, while the receptor supermolecule is completed through a pyrone  $\pi\cdots\pi$  interactions [3.56(1) and 3.55(1) Å]. In **1b** second hydrogen atom of  $\text{–NH}_2^+$  group acts as a bifurcated hydrogen bond donor towards the nitrogen atom of  $\text{SCN}^-$  [2.914(15) Å] and O11 [2.889(3) Å] of the other *Z*-conformer. In the *Z*-conformers, the central  $\text{–NH}_2^+$

group forms hydrogen bonds with O26 [2.881(3) Å] atoms from *C*-conformers and nitrogen atoms (N31) of other  $\text{SCN}^-$  anions [2.688(3) Å]. It is also important to address how  $\text{SCN}^-$ , particularly S-atomic part, of the  $\text{SCN}^-$ , are accommodated in highly complementary environment within the crystal, i.e. in *C*–H rich surfaces inside the crystal structure. The other sulphur atom of crystallographically independent  $\text{SCN}^-$ , in addition to *C*–H region, is embraced by the  $\pi$ -systems of two neighbouring pyrone moieties [3.36(1) Å from *Z*- and 3.34(1) Å from *C*-conformer, Figure 4].



**Figure 1.** a) Main hydrogen bonding motif in **1a** and **2**; b) two arrays of HL molecules are exposing their *C*–H surface to the voids in which c)  $\text{SCN}^-$  (in **1a** are shown) or  $\text{Br}^-$  (**2**) anions and methanol molecules are placed (a perspective view). Hydrogen atoms which are not participating in the hydrogen-bonding are omitted for clarity.



**Figure 2.** Hydrogen bonding scheme in CZ-dimers complexing a)  $\text{SCN}^-$  (**1b**) and b)  $\text{ClO}_3^-$  (**3**) anions. A part of the symmetrically related molecules is shown to depict the environment of encapsulated c)  $\text{SCN}^-$  and d)  $\text{ClO}_3^-$  anion. Hydrogen atoms which are not participating in the hydrogen-bonding are omitted for clarity.

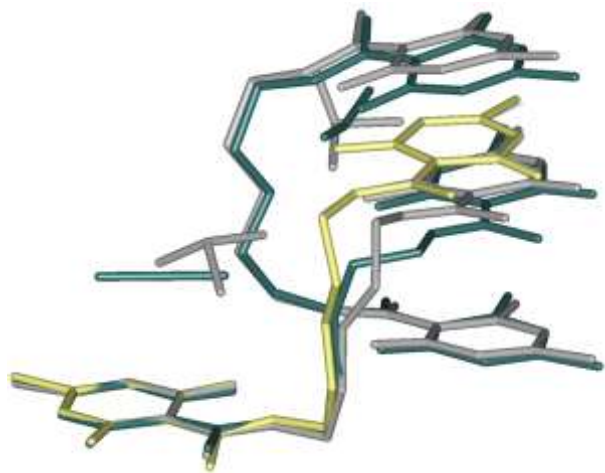
It is interesting to notice, when the main interaction of the receptor is with the weaker hydrogen-bonding acceptor group of the thiocyanate, the receptor self-assembles to form a high-ordered supramolecule (polymer) in order to saturate its strong hydrogen-bonding donor groups and uses only weaker C–H donors for anion binding. When the receptor binds the thiocyanate guest over the strong hydrogen-bonding acceptor, its conformation is adapted to accomplish the binding with strong N–H donor groups.

**Conformational analysis.** In a great extent the crystal structure **3** resembles to **1b**, except having three methanol molecules per CZ-dimer. Aliphatic chains torsion angle analysis for all conformers shows fine details in conformational adaptability of the receptor for the specific anion (Table 1, Figure 3). For both C-conformers in **1b** and **3** torsion angle values fall within a very narrow angular window. The Z-conformers, roughly, could be divided into two pairs, depending on the distance between the centres of two pyrone rings. More compact ones are almost the same and are used as building blocks in **1a** and **2** {new polymers of a [*syn-Z*···*syn-Z*]<sub>n</sub> type}. The others found in CZ-dimers show significant differences.

**Table 1.** Aliphatic chain torsion angles (absolute values) in °.

—	<i>syn-Z</i> ( <b>1a</b> )	<i>syn-Z</i> ( <b>1b</b> )	<i>syn-C</i> ( <b>1b</b> )	<i>syn-Z</i> ( <b>2</b> )	<i>syn-Z</i> ( <b>3</b> )	<i>syn-C</i> ( <b>3</b> )
$\varphi_1$	56.9(4)	65.6(3)	72.9(3)	56.4(7)	53.6(4)	74.9(3)
$\varphi_2$	174.2(3)	87.2(3)	171.5(2)	174.5(5)	161.3(3)	173.0(3)
$\varphi_3$	173.5(3)	171.7(2)	171.7(2)	172.9(5)	177.9(3)	176.6(3)
$\varphi_3$	54.2(4)	51.5(3)	71.7(3)	53.4(7)	55.9(4)	71.6(3)

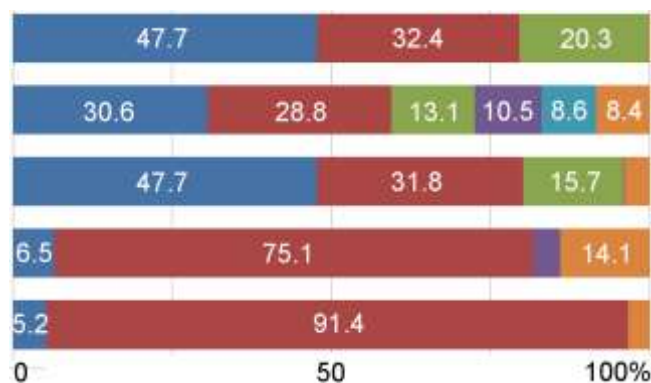
$\varphi_1 \equiv \text{N11-C19-C110-N12}$ ;  $\varphi_2 \equiv \text{C19-C110-N12-C111}$ ;  $\varphi_3 \equiv \text{C110-N12-C111-C112}$ ;  $\varphi_4 \equiv \text{C12-C111-C112-N13}$



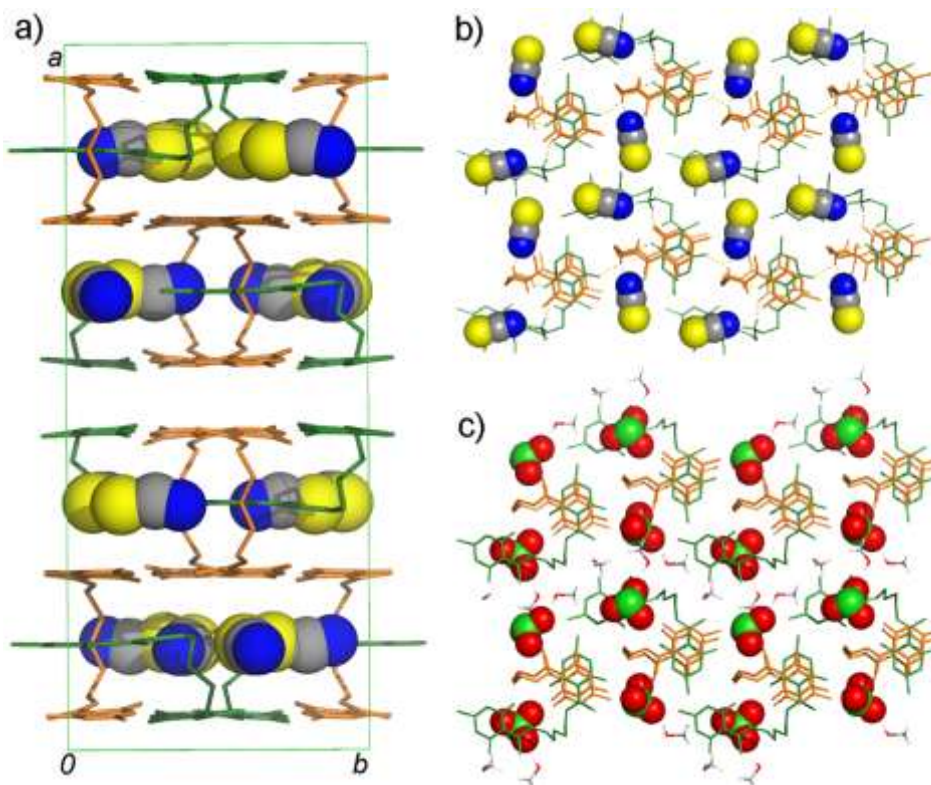
**Figure 3.** Overlay of the molecular structures from **1a** (yellow), **1b** (dark grey), **2** (light blue) and **3** (grey). Hydrogen atoms are not shown.

Thiocyanate is placed almost parallel to the line defined by the centres of pyrone and RAHB-ring giving rise to aromatic interactions. Although it is as close to Z-conformer as  $\text{SCN}^-$ ,  $\text{ClO}_3^-$  simply needs more space which causes the slight shift in the upper part of the aliphatic chain (as in Figure 3) so that „tweezed“ pyrone moiety maintains the same position. To encapsulate a pyramidal  $\text{ClO}_3^-$  anion, the distance between two Z-conformers must be greater (in **3**, it is longer for about 0.3 Å than in **1b**). This opening results in an additional space which becomes populated by methanol molecules. Accommodated solvent molecules provide a source of HB-donors for remaining oxygen atoms of the chlorate. Crystal packing of forms **1b** and **3** are shown in Figure 4.

**Hirshfeld surface analysis.** Differences in the anion environment and the details of intermolecular hydrogen bonding) in the structures **1a**, **1b** and **3** can be extracted from decomposed two-dimensional fingerprint plots.<sup>16</sup> Scheme 2 shows the contribution (in %) to the Hirshfeld surface area for a distinct type of intermolecular contact for  $\text{SCN}^-$  and  $\text{ClO}_3^-$  anions in the HB-networks **1a**, **1b** and **3**. S···H contacts are making 47.7% of surface area in **1a** and **1b** (Z-conformers) and 30.6% in **1b** (C-conformer). For C-conformer, the contribution of N···H contacts to the total surface area is smaller. This is largely compensated with the increase of the surface area involved in the  $\pi$ ··· $\pi$  interactions. In **3**, anions are mostly connected to the hydrophilic amino and hydroxyl groups. One  $\text{ClO}_3^-$  anion is additionally placed between two  $\pi$ -systems from  $\text{HL}^+$  molecules giving rise to the anion··· $\pi$  interactions.



**Scheme 2.** Relative contributions (> 5%) to the Hirshfeld surface (for different type of intramolecular contacts: S or Cl···H blue; N or O···H red; C···H green; S(Cl)···C purple; C···C turquoise; other contacts orange). The data was derived from the fingerprint plots for  $\text{SCN}^-$  and  $\text{ClO}_3^-$  in HB-networks (from top): **1a**, **1b** [conformers C and Z] and **3** [conformer C and Z].



**Figure 4.** a) Crystal packing in **1b** viewed down the crystallographic *c*-axis. Layers of CZ-dimers and encapsulated anions viewed down the crystallographic *a*-axis b) in **1b** and c) in **3**. Hydrogen atoms which are not participating in the hydrogen-bonding are omitted for clarity. HL and methanol molecules are shown as sticks; anions are shown in the CPK-mode.

### IR spectroscopy.

In spectra of all complexes, the sharp N–H band at  $3123\text{ cm}^{-1}$  disappears upon complexation, indicating that the central amino group now participates in hydrogen bonding. For **1a**, where the  $\text{SCN}^-$  nitrogen atom is an acceptor of the strong hydrogen bond from the methanol hydroxyl group [ $\text{O}(\text{methanol})\cdots\text{N}(\text{SCN}^-)$  the distance amounts  $2.837\text{ \AA}$ ], the band corresponding to  $\text{C}\equiv\text{N}$  stretching vibration is a sharp band found at  $2054\text{ cm}^{-1}$ . For **1b**, where two crystallographically independent  $\text{SCN}^-$  ions are hydrogen bonded by protonated amino groups of the *C*- and *Z*-conformers of the host [with  $\text{N}(\text{amino})\cdots\text{N}(\text{SCN}^-)$  distances of  $2.698\text{ \AA}$  and  $2.926\text{ \AA}$ , respectively], this band can be found at  $2053\text{ cm}^{-1}$  with a wide shoulder around  $2037\text{ cm}^{-1}$ . However, regardless of the anion present in the structure, the band pattern in the range  $1700\text{--}500\text{ cm}^{-1}$  depends largely on the specific type of host conformation or supramolecular self-assembly.

**1a** and **2** (as well as in  $\text{HL}:\text{I}^-$  complex) have almost identical arrangement of the host cations, where HL is exclusively in *syn-Z* conformation and builds chains along the crystallographic *a*-axis. The lactone oxo-group in these chains is involved in the strong hydrogen bond from the central protonated amino group of other HL, resulting in the shift of the corresponding band from  $1690\text{ cm}^{-1}$  in **L** to  $1683\text{ cm}^{-1}$  in these complexes. In **1b**, where the HL assembles to *syn-C* – *syn-Z* dimer, the same band can be found at  $1700\text{ cm}^{-1}$ . Other

bands, corresponding to  $\text{C}=\text{C}$ ,  $\text{C}=\text{O}$  and  $\text{C}=\text{N}$  vibrations are found at  $1654$ ,  $1602$ ,  $1571$  (broad doublet) and  $1480\text{ cm}^{-1}$  in **1a** and **1b**. In **1b**, these bands are shifted to  $1653$ ,  $1612$ ,  $1569$  (sharp singlet) and  $1474\text{ cm}^{-1}$ . The band pattern in **1b** was compared to the previously observed complex of HL with hydrogenfumarate, where the HL was assembled in an almost identical *syn-C*–*syn-Z* dimer.<sup>13</sup> The investigated bands in this complex are identical to those from **1b**, with slight differences assigned to bonded fumarate (Figures S1 and S2).

For the  $\text{ClO}_3^-$  complex **3**, the lactone oxo-group band can be observed at  $1699\text{ cm}^{-1}$ , and the IR pattern for  $\text{C}=\text{C}$ ,  $\text{C}=\text{O}$  and  $\text{C}=\text{N}$  vibration resembles that from **1b**. All four characteristic vibration modes for  $\text{ClO}_3^-$  anion are clearly visible in the spectrum, the Cl–O symmetric stretch at  $939\text{ cm}^{-1}$  as a moderately strong band, Cl–O asymmetric stretch at  $980\text{ cm}^{-1}$  as a broad and strong band, and the “umbrella” vibration at the  $607\text{ cm}^{-1}$ . The broadening of the signals can be tentatively assigned to the presence of two differently bonded  $\text{ClO}_3^-$  anions in the structure and the overlapping of their vibration bands. The inspection of the infrared spectra for the obtained forms revealed that for these systems this technique could be extremely informative not only for establishing the composition of the supramolecular complex and primary interactions between host and guest on the molecular level,<sup>19</sup> but also for establishing the mode of the folding and self-organization between the HL cations. Each of the observed conformers or

supramolecular assembly types of **HL** has a unique spectrum. Since the majority of these compounds are air-sensitive solvates, PXRD data is often ambiguous. IR spectra can thus provide a quick insight in the arrangement of the host molecules.

### Thermal behaviour.

The solvated form of thiocyanate complex, **1a**, was submitted to DSC and TGA measurements prior to the crystalline methanol loss. The laboratory was cooled to 10 °C and the crystals in their mother liquid were kept at 4 °C. Crystals of **1a** were taken from their mother liquid and immediately dried in methanol vapours, in order to remove methanol from their surface and to prevent egress of methanol from the crystal structure. The prepared sample was put in 40 µL aluminium crucibles and sealed with perforated aluminium cover. The DSC curve revealed two thermal events just before 130 °C which are followed by a stronger endotherm at 190 °C (melting). We collected a sample at 140 °C and analysed it by a PXRD and IR. No significant changes were observed in IR spectra, and the PXRD diffractogram showed a partial amorphization of the compound. However, no thermally induced transformation of **1a** to **1b** was observed. Compound **2** showed almost identical thermal behaviour to **1a**. Compound **1b** was stable below 195 °C (onset), where the strong endotherm was ascribed to the melting. For complex **3** no thermal measurements were performed due to its potential explosive properties.

### Conclusions

We have demonstrated how geometrically simple anions such as SCN<sup>-</sup> and ClO<sub>3</sub><sup>-</sup> can serve as versatile templates for building of divergent hydrogen-bonding networks. The complex coordinating potential of these anions arises primarily from their ambivalent hydrogen-bond or π-accepting properties. Depending on the available anion accepting group (e. g. S- or N-atoms in SCN<sup>-</sup>), the flexible **HL** molecules respond by adopting different conformers or self-organization modes, to provide rigid and complementary environment for the most efficient binding in the formed crystal architecture. In form **1a**, SCN<sup>-</sup> uses a sulphur atom as an acceptor and all strong hydrogen bond donors of the **HL** become (coordinatively) saturated by interactions with the oxo-functionalities from other **HL** molecules, so only the weaker directional binding groups are accessible for anion binding. On the other hand, when SCN<sup>-</sup> uses a nitrogen atom as a hydrogen-bonding acceptor (form **1b**) then **HL** changes its geometry in order to employ strong donor groups for optimal binding of SCN<sup>-</sup>. In terms of number of potential hydrogen bond acceptors, chlorate anion is more demanding. Hydrogen bonding saturation is completed through interaction with solvent molecules in **3**. Although it is hard to expect control over the local geometry in the solid state, the results show how multifaceted anions can be used as complex anionic templates for building of new and diverse supramolecular systems.

### Experimental

**Materials.** All chemicals (Aldrich) used for the syntheses were at least of analytical grade and used as purchased. Solvents (Kemika) were distilled before use.

**General synthetic procedures.** **L** was synthesized by the method described in the literature.<sup>20</sup> The purity of the sample was checked by IR and UV-Vis analyses. Complexes **1a**, **1b** and **2** were obtained by self-assembly processes in the methanol solutions. All syntheses were conducted at room temperature. Complex **1a** was prepared by addition of NH<sub>4</sub>SCN (0.1 mmol) to the methanol solution of **L** (0.062 mmol in 4 mL of methanol) acidified by equimolar amount of *p*-toluenesulfonic acid (yield, based on **L** = 67 %). Colourless prisms readily loose crystalline solvent after a short exposure to air. Complex **1b** was prepared by identical procedure with only difference that KSCN was used as a source of SCN<sup>-</sup> anions (yield = 82 %). The same product was obtained by reaction of NH<sub>4</sub>SCN and **L** in acidified methanol (0.062 mmol in 2 mL, yield = 76 %) or as a microcrystalline product from EtOH (yield = 90 %). **1b** crystallizes as colourless plates, which are stable upon exposure to air. Crystals of **1a** and **1b**, appropriate for diffraction studies were obtained from mother liquids. Complex **2** was obtained by addition of an equimolar amount of HBr to the methanol solution of **L** (0.062 mmol in 2.4 mL of methanol). Colourless prisms were obtained after a day standing at room temperature (87 %). Crystals appropriate for diffraction studies were collected from diluted methanol solution (0.062 mmol of starting compounds in 8 mL of methanol). The iodide complex was obtained by reaction of equimolar amounts of **L** and tetrabutylammonium iodide in acidified methanol solution (0.062 mmol *p*-toluenesulfonic acid in 3 mL of methanol). Complex **3** was obtained by the following procedure: Ba(ClO<sub>3</sub>)<sub>2</sub> (0.040 mmol) was dissolved in 3 mL of methanol and the sulphuric acid (0.07 mmol) was added to reaction mixture. The white precipitate (BaSO<sub>4</sub>) was filtered. Then, 0.062 mmol of **L** was dissolved in 3 mL of methanol and was added to the clear filtrate. The colourless crystals, which would decompose when dried were obtained from their mother liquid after 7 days standing at RT (yield = 37 %). The crystals were suitable for diffraction studies.

**IR spectroscopy.** IR spectra were recorded on PerkinElmer *Spectrum RXI* FT-IR spectrometer (KCl pellet technique, 4000–400 cm<sup>-1</sup> range, 2 cm<sup>-1</sup> step). **L**: 3432 (broad) (ν<sub>N-H</sub>, RAHB); 3366 (sharp) (ν<sub>N-H</sub>, central) 1688, 1656, 1636, 1574, 1472 (all vs, mixed C=O, C=C). **1a**: 3466, 3353 (br) (ν<sub>N-H</sub>, hydrogen bonded); 2052 (ν<sub>C=N</sub>); 1682, 1652, 1601, 1571 (all vs, mixed C-O, C=C). **1b**: 3440 (br) (ν<sub>N-H</sub>, hydrogen bonded); 2053 (ν<sub>C=N</sub>); 1700, 1655, 1612, 1567 (all vs, mixed C-O, C=C). **2**: 3440 (br) (ν<sub>N-H</sub>, hydrogen bonded); 1676, 1640, 1576 (all vs, mixed C-O, C=C), 843 (s) (ν<sub>P-F</sub>).

**TGA and DSC experiments.** Thermogravimetric analyses were performed on a Mettler-Toledo TGA/SDTA851e thermobalance using aluminium crucibles under nitrogen stream with the heating rate of 5 °C min<sup>-1</sup>. The results were processed with the Mettler STARe 9.01 software. DSC measurements were performed under the nitrogen stream on the Mettler-Toledo DSC823e calorimeter with STARe SW 9.01 (5 °C min<sup>-1</sup>).

**Single crystal X-ray crystallography.** The compounds **1a**, **1b**, **2** and **3** were obtained from methanol as colourless prismatic crystals at room temperature. Each single-crystal was mounted on a glass fibre and used for measurements of unit cell parameters and intensity data collection. Diffracted intensities were collected on an Oxford Diffraction Xcalibur 3 CCD diffractometer using graphite-monochromated MoK $\alpha$  (0.71073 Å) radiation at 120, 150 and 293 K. The CrysAlis<sup>21</sup> program package was used for data collection, cell refinement and data reduction. Multi-scan empirical absorption corrections were applied using spherical harmonics, implemented in SCALE3 ABSPACK scaling algorithm of CrysAlis. Structures were solved by direct methods (SHELXS<sup>22</sup>) and refined with full-

matrix least-squares on  $F^2$  (SHELXL-97 and 2014<sup>22</sup>), using the WinGX<sup>23</sup> program package. All non-hydrogen atoms were refined anisotropically. All hydrogen atoms were assigned calculated positions and allowed to ride on their carrier atoms. There are two versions of the structure **2**, one with modelled disordered molecules (presented only in Supplementary Information and the other one in which the electron contribution of the non-modelled molecules was therefore subtracted from the diffraction data using the PLATON/SQUEEZE<sup>24</sup> procedure. The non-modelled molecules were found to occupy 297 Å<sup>3</sup> or 22% of the unit cell. A summary of crystal data is presented in Table 1. Programs PLATON<sup>24</sup> and PyMOL were used for analysis of the structure and drawings preparation. Supplementary crystallographic data sets for the structures **1a**, **1b**, **2** (squeezed) and **3** are available through the Cambridge Structural Data base with deposition numbers 978263-978265 and 1035947. The second, non-squeezed model of HL:Br<sup>-</sup> complex is available quoting CCDC number 1051952. Copy of this information may be obtained free of charge from the director, CCDC, 12 Union Road, Cambridge, CB2 1EZ, UK (fax: +44 1223 336 033; e-mail: [deposit@ccdc.cam.ac.uk](mailto:deposit@ccdc.cam.ac.uk) or <http://www.ccdc.cam.ac.uk>).

**Table 2.** Crystal data and structure refinements parameters for **1a**, **1b**, **2** and **3**

	<b>1a</b>	<b>1b</b>	<b>2</b>	<b>3</b>
Formula	C <sub>22</sub> H <sub>30</sub> N <sub>4</sub> O <sub>7</sub> S	C <sub>21</sub> H <sub>26</sub> N <sub>4</sub> O <sub>6</sub> S	C <sub>20</sub> H <sub>26</sub> N <sub>3</sub> O <sub>6</sub> Br	C <sub>43</sub> H <sub>64</sub> Cl <sub>2</sub> N <sub>6</sub> O <sub>21</sub>
Crystal size (mm <sup>3</sup> )	0.15×0.12×0.10	0.21×0.18×0.15	0.30×0.10×0.03	0.25×0.22×0.13
Space group	<i>P</i> -1	<i>C</i> 2/ <i>c</i>	<i>P</i> -1	<i>P</i> 2 <sub>1</sub> / <i>n</i>
Temperature (K)	120	293	150	293
Unit cell dimensions				
<i>a</i> (Å)	8.0072(5)	33.554(7)	7.9370(5)	15.9465(6)
<i>b</i> (Å)	11.8432(9)	13.996(3)	12.8236(10)	18.9851(4)
<i>c</i> (Å)	13.3307(9)	18.645(4)	13.4836(10)	17.1610(7)
$\alpha$ (°)	96.449(6)	90.00	79.804(6)	90.00
$\beta$ (°)	106.07(6)	100.54(3)	76.806(6)	111.55(1)
$\gamma$ (°)	97.869(6)	90.00	78.841(6)	90.00
Volume (Å <sup>3</sup> )	1188.2(1)	8608(3)	1298.1(1)	4862.2(3)
<i>Z</i>	2	16	2	4
<i>D</i> <sub>calc</sub> (g cm <sup>-3</sup> )	1.382	1.428	1.249	1.473
$\mu$ (mm <sup>-1</sup> )	0.187	0.198	1.669	0.223
<i>F</i> (000)	524	3904	478	2264
Refl. collected/independent	8861/4543	20162/8419	10549/2847	54110/8464
No. observed refl. [ <i>I</i> >2 $\sigma$ ( <i>I</i> )]*	2443	4099	1566	6653
No. restraints/No. parameters	0/309	0/595	0/275	6/668
<i>R</i> / <i>wR</i> [ <i>I</i> >2 $\sigma$ ( <i>I</i> )]*	0.0732/0.1353	0.0481/0.0749	0.1041/0.3058	0.0665/0.1859
<i>R</i> / <i>wR</i> [all data]	0.1560/0.1589	0.0872/0.1291	0.1452/0.3386	0.0816/0.1971
Goodness-of-fit on $F^2$	0.970	0.841	1.161	1.033
Largest diff. peak and hole (e Å <sup>-3</sup> )	0.639, -0.387	0.297, -0.322	1.146, -0.902	1.192, -0.538

$$*R = \frac{\sum \|F_o\| - |F_c|}{\sum F_o}, w = 1/[\sigma^2(F_o^2) + (g_1 P)^2 + g_2 P] \text{ where } P = (F_o^2 + 2F_c^2)/3; S = \frac{\sum [w(F_o^2 - F_c^2)^2]}{(N_{\text{obs}} - N_{\text{param}})}^{1/2}.$$



### Structural data studies

The study of the thiocyanate complexation modes using selected structural criteria was conducted using Cambridge Structural Database (CSD 5.24 + 2 updates) for small molecules and Protein Data Bank (PDB) for macromolecules. The obtained data was compared and discussed in terms of geometrical features of our system structures. The available data for chlorate were insufficient to make a reliable conclusion.

**CSD search.** The analysis of the  $\text{SCN}^-$  geometry in supramolecular complexes provided a main set of 238 structures that satisfied the given criteria (3D coordinates determined, not disordered, no errors, not covalently bound or coordinated to the metal ions, not polymeric and with  $R$ -factor  $< 0.075$ ; bond lengths and angles were constrained to 1.00–1.25 Å for C–N distance, 1.50–1.75 Å for C–S distance and  $170^\circ$ – $180^\circ$  for S–C–N angle), among 85 structures that did not contain metal ions. Considering the importance of  $\text{SCN}^-$  it is a surprisingly low number of structures, suggesting information deficiency about precise coordinative properties of this ambivalent ion.<sup>7</sup> The analyzed hydrogen bonds included N, O and C atoms as donors and S or N( $\text{SCN}^-$ ) atoms as acceptors. In the selected set, 114 structures contained at least one N–H donor group and 92 structures with at least one O–H group. The distances between O and N donor atoms and N( $\text{SCN}^-$ ) atom were limited to 3.6 Å [C(donor)⋯N distance is limited to 3.95 Å] and distances between donor atoms and S( $\text{SCN}^-$ ) atom were limited to 3.9 Å (except for C–H⋯S bond where the C⋯S distance was limited to 4.0 Å).

In all cases the hydrogen bond angle was in the  $90^\circ$ – $180^\circ$  range. In the main set, N( $\text{SCN}^-$ ) atom was identified as a hydrogen-bonding acceptor in 174 structures. However, in many structures these interactions overlap and there is a combination of more than one donor group (in 88 cases, N–H group acts as a donor; 48 structures with O–H donor group; 120 structures with C–H donor group). C–H is an exclusive donor for N( $\text{SCN}^-$ ) in 46 (of 120) structures, but only in the structures where no N–H donor group is present. A combination of N–H and C–H donors with N( $\text{SCN}^-$ ) acceptor atom is present in 82 structures and in combination with O–H group in 5 structures. Combination of O–H and C–H donor groups is present in 19 structures. Out of 177 structures, where X–H⋯ $\text{SCN}^-$  hydrogen bond is observed (X = N, O or C atom), in 108 of 149 of them C–H group is an exclusive donor. In only 60 structures the donor group for S( $\text{SCN}^-$ ) atom is the N–H group and in 23 structures the donor role was given to the O–H group.

Thiocyanate is a known bridging ligand, with N and S groups serving as a donor for coordination to metal cations, resulting in polynuclear coordination compounds. In previous analyses of coordinative abilities of the  $\text{SCN}^-$  anion, the possibility of  $\text{SCN}^-$  as S, N chelating ligand was suggested.<sup>7</sup> However, by inspecting the data in our research, no evidence of the chelating S, N donors were found, but many of the structures in our search contain  $\text{SCN}^-$  as a bridging ligand, simultaneously accepting hydrogen bonds by S and N terminal atoms. It could be concluded that the N-terminal side of thiocyanate is in

favour of stronger hydrogen-bonding donors, while the S-terminal side is in favour of more hydrophobic interactions with C–H donors. Although simple in geometry and relatively small, this anionic specie is far from being a simple building block in the crystal structure architecture.

**PDB search.** Binding properties of thiocyanate anions in the structures of biological macromolecules were retrieved from the Protein Data Bank. It was found that 217 records contain at least one  $\text{SCN}^-$  molecule per asymmetric unit, out of which 24 structures (with 41  $\text{SCN}^-$  ions present) were determined using X-ray diffraction with resolution above 1.5 Å. A set of 34 free thiocyanate ions, not bound to the metal centres, was used for the interactions analysis. RCSB Ligand explorer<sup>17</sup> v4.1.0 was used to visualize the interactions and to determine distances between the  $\text{SCN}^-$  ion and the surrounding amino acids/ions/molecules that are within 4 Å range. The thresholds were as it follows: 3.3 Å for the hydrogen bonding interactions, 3.9 Å for the hydrophobic interactions, 3.3 Å for the bridging hydrogen bonding interactions, and 3.5 Å for the metal interactions.

In the vast majority of  $\text{SCN}^-$  ions (28), a nitrogen atom was found as an acceptor of strong hydrogen bond donors, water molecules (27 interactions of the N⋯H–O–H type) or amide hydrogen atom (12 interactions of the N⋯H–N type). A total of 47 interactions with the C atom ( $\pi$ -system) was observed in 29 ions: 44 of the C–H⋯C( $\pi$ ) type and 3 of C( $\pi$ )⋯C( $\pi$ ) type. The remaining ions did not satisfy the threshold range. The sulphur atom binding pocket chemical character was inspected manually in PyMOL.<sup>18</sup> In 31 of 34  $\text{SCN}^-$  ions the sulphur atom preferred hydrophobic pockets (22 were exclusively hydrophobic), while in only three ions exclusively hydrophilic interactions were observed. The thiocyanate binding behaviour/preference in small molecule and macromolecule crystal structures are in good agreement. The results of this analysis can serve as assistance in thiocyanate modelling in macromolecules.

### Acknowledgements

The authors thank the Ministry of Science, Education and Sports of the Republic of Croatia for financial support (grant numbers 119-1191342-1082 and 119-1193079-1084). We are grateful to Prof Dubravka Matković-Čalogović, Dr Mirna Rubčić and Miss Mia Vrbanac Užarević for critical discussions.

### Notes and references

Authors contributed equally to this work.

<sup>a</sup> Department of Chemistry, Faculty of Science, University of Zagreb, Horvatovac 102a, 10000 Zagreb (Croatia). E-mail: [idilovic@chem.pmf.hr](mailto:idilovic@chem.pmf.hr)

<sup>b</sup> Ruder Bošković Institute, Division of Physical Chemistry, Bijenička 54, 10002 Zagreb (Croatia). E-mail: [Krunoslav.Uzarevic@irb.hr](mailto:Krunoslav.Uzarevic@irb.hr)

<sup>c</sup> Current address: McGill University, Department of Chemistry, 801 Sherbrooke St. West, Montreal, Qc H3A 0B8.

- (a) P. A. Gale, *Chem. Soc. Rev.*, 2010, **39**, 3746–3771. (b) A. Basu and G. Das, *Dalton Trans.*, 2012, **41**, 10792–10802. (c) A. Basu and G. Das *Chem. Commun.*, 2013, **49**, 3997–3999. (d) L. Trembleau, T.

- A. D. Smith and M. H. Abdelrahman, *Chem. Comm.* DOI: 10.1039/c3cc43019g. (e) R. Custelcean, *Chem. Soc. Rev.*, 2010, **39**, 3675-3685.
- 2 (a) P. D. Beer and P. A. Gale, *Angew. Chem. Int. Ed.* 2001, **40**, 486-516; (b) F. P. Schmidtchen, *Chem. Soc. Rev.* 2010, **39**, 3916-3935; (c) F. P. Schmidtchen and M. Berger, *Chem. Rev.* 1997, **97**, 1609-1646; (d) (Ed.: R. Vilar), *Top. Curr. Chem.* 2008, **129**; (e) F. P. Schmidtchen, *Top. Curr. Chem.* 2005, **255**, 1-29. (f) R. Custelcean and P. Remy, *Cryst. Growth Des.*, 2009, **9**, 1985-1989.
- 3 (a) R. Vilar, *Angew. Chem. Int. Ed.* 2003, **42**, 1460-1477; (b) N. Gimeno and R. Vilar, *Coordination Chemistry Reviews*, 2006, **250**, 3161-3189. (c) M. H. Filby and J. W. Steed, *Coordination Chemistry Reviews*, 2006, **250**, 3200-3218. (d) M. R. Sambrook, P. D. Beer, J. A. Wisner, R. L. Paul and A. R. Cowley, *J. Am. Chem. Soc.*, 2004, **126**, 15364-15365. (e) M. D. Lankshear and P. D. Beer, *Acc. Chem. Res.*, 2007, **40**, 657-668. (f) R. Sekiya, M. Fukuda and R. Kuroda, *J. Am. Chem. Soc.*, 2012, **134**, 10987-10997.
- 4 K. Ariga and T. Kunitake, *Supramolecular Chemistry – Fundamentals and Applications*, Springer-Verlag, Berlin Heidelberg 2006.
- 5 (a) A. P. Umali, S. E. LeBouef, R. W. Newberry, S. Kim, L. Tran, W. A. Rome, T. Tian, D. Taing, J. Hong, M. Kwan, H. Heymann and E. V. Anslyn, *Chem. Sci.*, 2011, **2**, 439-445; (b) A. T. Wright and E. A. Anslyn, *Chem. Soc. Rev.*, 2006, **35**, 14-28.
- 6 R. Custelcean, *Chem. Commun.*, 2013, **49**, 2173-2182.
- 7 (a) L. Tchertanov and C. Pascard, *Acta Cryst. B*, 1996, **52**, 685-690; (b) L. Tchertanov, *Supramolecular Chemistry*, 2000, **12**, 67-91.
- 8 (a) M. Kabešová, R. Boča, M. Melník, D. Valigura and M. Dunaj-Jurčo *Coordination Chemistry Reviews*, 1995, **140**, 115-135; (b) D.A. Buckingham, *Coordination Chemistry Reviews*, 1994, **135-136**, 587-621.
- 9 (a) H. Zhang, X. Wang, K. Zhang and B. K. Teo, *Coordination Chemistry Reviews*, 1999, **183**, 157-195; (b) L. Li, L. Zhu, Z.-C. Yue, W.-L. Zhang, B. Zhang, Y.-Y. Niu and H.-W. Hou, *CrystEngComm*, 2013, DOI: 10.1039/C3CE41430B. (c) R. Custelcean, *Chem. Commun.*, 2013, **49**, 2173-2182.
- 10 Y. Inokuma, S. Yoshioka, J. Ariyoshi, T. Arai, Y. Hitora, K. Takada, S. Matsunaga, K. Rissanen and M. Fujita, *Nature* 2013, **495**, 461-466.
- 11 K. Užarević, I. Đilović, D. Matković-Čalogović, D. Šišak and M. Cindrić, *Angew. Chem. Int. Ed.* 2008, **47**, 7022-7025.
- 12 (a) K. Užarević, I. Đilović, N. Bregović, V. Tomišić, D. Matković-Čalogović and M. Cindrić, *Chem Eur. J.* 2011, **17**, 10889-10897; (b) N. Bregović, N. Cindro, L. Frkanec, K. Užarević and V. Tomišić, *Chem Eur. J.* 2014, **20**, 15863-15871.
- 13 K. Užarević, I. Halasz, I. Đilović, N. Bregović, M. Rubčić, D. Matković-Čalogović and V. Tomišić, *Angew. Chem. Int. Ed.* 2013, **125**, 5614-5618.
- 14 F. H. Allen, *Acta Cryst. B*, 2002, **58**, 380-388.
- 15 H. M. Berman, J. Westbrook, Z. Feng, G. Gilliland, T. N. Bhat, H. Weissig, I. N. Shindyalov and P. E. Bourne, *Nucleic Acids Research*, 2000, **28**, 235-242.
- 16 M. A. Spackman and D. Jayatilaka, *CrystEngComm*, 2009, **11**, 19-32.
- 17 J. L. Moreland, A. Gramada, O. V. Buzko, Q. Zhang and P. E. Bourne, *BMC Bioinformatics* 2005, **6**, 21
- 18 The PyMOL Version 0.99rc6 Schrödinger, 2006 DeLano Scientific LLC.
- 19 A. Mukherjee, S. Tothadi, S. Chakraborty, S. Ganguly and G. R. Desiraju, *CrystEngComm*, 2013, **15**, 4640-4654.
- 20 (a) S. Liu, S. J. Rettig and C. Orvig, *Inorg. Chem.*, 1991, **30**, 4915-4919; (b) P. Gilli, V. Bertolasi, V. Ferretti and G. Gilli, *J. Am. Chem. Soc.* 2000, **122**, 10405-10417.
- 21 Oxford Diffraction, CrysAlis Software System, Version 1.171.31, 2006.
- 22 (a) G. M. Sheldrick, *Acta Cryst. A*, 2008, **64**, 112-122. (b) G. M. Sheldrick, *SHELXS-2014, Program for Crystal Structure Solution*, University of Göttingen, 2014; (c) G. M. Sheldrick, *SHELXL, Version 2014/7, Program for Crystal Structure Refinement*, University of Göttingen, 2014.
- 23 L. J. Farrugia, *J. Appl. Crystallogr.* 1999, **32**, 837.
- 24 (a) P. van der Sluis and A. L. Spek, *Acta Crystallogr. A*, 1990, **46**, 194; (b) A. L. Spek, *J. Appl. Crystallogr.* 2003, **36**, 7.