

Analyst

Accepted Manuscript



This is an *Accepted Manuscript*, which has been through the Royal Society of Chemistry peer review process and has been accepted for publication.

Accepted Manuscripts are published online shortly after acceptance, before technical editing, formatting and proof reading. Using this free service, authors can make their results available to the community, in citable form, before we publish the edited article. We will replace this *Accepted Manuscript* with the edited and formatted *Advance Article* as soon as it is available.

You can find more information about *Accepted Manuscripts* in the [Information for Authors](#).

Please note that technical editing may introduce minor changes to the text and/or graphics, which may alter content. The journal's standard [Terms & Conditions](#) and the [Ethical guidelines](#) still apply. In no event shall the Royal Society of Chemistry be held responsible for any errors or omissions in this *Accepted Manuscript* or any consequences arising from the use of any information it contains.

1
2
3
4
5
6
7
8
9
10
11
12
13
14
15
16
17
18
19
20
21
22
23
24
25
26
27
28
29
30
31
32
33
34
35
36
37
38

Desalting Protein Ions in Native Mass Spectrometry Using Supercharging Reagents

Catherine A. Cassou and Evan R. Williams*

Department of Chemistry, University of California, Berkeley, California 94720-1460

Submitted to *Analyst*

June 16, 2014

39
40
41
42
43
44
45
46
47
48
49
50
51
52
53
54
55
56
57
58
59
60

*Address reprint requests to Prof. Evan R. Williams:

Department of Chemistry
University of California, Berkeley
B42 Hildebrand Hall
Berkeley, CA 94720
Phone: (510) 643-7161
E-mail: erw@berkeley.edu

Abstract

Effects of the supercharging reagents *m*-NBA and sulfolane on sodium ion adduction to protein ions formed using native mass spectrometry were investigated. There is extensive sodium adduction on protein ions formed by electrospray ionization from aqueous solutions containing millimolar concentrations of NaCl, which can lower sensitivity by distributing the signal of a given charge state over multiple adducted ions and can reduce mass measuring accuracy for large proteins and non-covalent complexes for which individual adducts cannot be resolved. The average number of sodium ions adducted to the most abundant ion formed from ten small (8.6-29 kDa) proteins for which adducts can be resolved is reduced by 58% or 80% on average, respectively, when 1.5% *m*-NBA or 2.5% sulfolane are added to aqueous solutions containing sodium compared to without the supercharging reagent. Sulfolane is more effective than *m*-NBA at reducing sodium ion adduction and at preserving non-covalent protein-ligand and protein-protein interactions. Desalting with 2.5% sulfolane enables detection of several glycosylated forms of 79.7 kDa holo-transferrin and NADH bound to the 146 kDa homotetramer LDH, which are otherwise unresolved due to peak broadening from extensive sodium adduction. Although sulfolane is more effective than *m*-NBA at protein ion desalting, *m*-NBA reduces salt clusters at high *m/z* and can increase the signal-to-noise ratios of protein ions by reducing chemical noise. Desalting is likely a result of these supercharging reagents binding sodium ions in solution, thereby reducing the sodium available to adduct to protein ions.

Introduction

The effects that different salts can have on protein stability have been known since the late 1800's, when Franz Hofmeister reported an ordering of cations and anions based on their

1
2
3 ability to salt in or salt out proteins,¹ and both non-specific and specific salt-protein interactions
4
5 can strongly influence protein structure and function.¹⁻⁸ Phosphate and Tris buffers as well as
6
7 sodium chloride are often added to aqueous protein solutions in order to stabilize native or
8
9 native-like protein structure by mimicking the environment inside the cell, which has an ionic
10
11 strength of ~150 mM.⁹ Specific salts and other small molecules are essential in the enzyme-
12
13 cofactor or protein-ligand interactions in such varied and vital processes as electron transport,¹⁰
14
15 ¹¹ ion pumping across cell membranes,^{12, 13} and drug interactions.^{14, 15}
16
17
18
19

20 Some protein structural methods, such as X-ray crystallography and NMR, are not
21
22 adversely affected by high salt concentrations, whereas high salt concentrations can be
23
24 detrimental to the performance of electrospray ionization (ESI) and to a lesser extent matrix-
25
26 assisted laser desorption ionization (MALDI) mass spectrometry (MS). Salts can increase
27
28 baseline noise due to the formation of ionic clusters and can cause ion suppression.¹⁶⁻²¹ For
29
30 example, alcohol dehydrogenase tetramer ions formed by nanoelectrospray ionization (nESI)
31
32 from 50 mM ammonium acetate can be measured with excellent signal-to-noise ratios (S/N),
33
34 whereas the tetramer is undetectable from the same solution with 10 mM Tris or HEPES
35
36 buffers.¹⁶ Similarly, addition of 10 mM CsCl to solutions of lysozyme in 1:1 methanol:water
37
38 decreases the total ion abundance for the protein by 130-fold.¹⁷ Salt adduction to protein ions
39
40 distributes the protein signal over multiple adducted ions, reducing the S/N of each protein ion,
41
42 and broadens mass spectral peaks of large proteins and protein complexes for which individual
43
44 adducts cannot be resolved.^{19, 21-25} Peak broadening decreases mass measurement accuracy for
45
46 these large proteins and can also inhibit the identification of covalent (glycosylations,
47
48 phosphorylation, or other post-translational modifications) or non-covalent (specific ion or
49
50 ligand binding) protein modifications.²³ McLuckey and coworkers found that the extent of
51
52
53
54
55
56
57
58
59
60

1
2
3 sodium ion adduction on a protein ion formed by ESI is related to the protein pI, solution pH,
4 and charge state.^{18, 26} There is more sodium ion adduction to low charge states,^{18, 21, 25-27} but
5
6
7 there is more adduction of trivalent metal ions to high charge states.²⁸
8
9

10 To reduce the adverse effects of many salts on MS performance, salts are often removed
11 by dialysis,^{29, 30} ion exchange chromatography,^{16, 31} or diafiltration³²⁻³⁴ prior to analysis by MS,
12 and a myriad of products for fast filtration and online chromatographic desalting of protein
13 solutions have been developed. However, removing even low concentrations of salts can
14 significantly change the structure of some proteins and protein complexes. For example, NtrC4
15 (a σ activator protein from *Aquifex aeolicus*) requires millimolar concentrations of certain salts,
16 e.g., Mg^{2+} , BeF_3^- , and ADP, in order to assemble into an active hexamer.^{35, 36} Several techniques
17 for reducing sodium ion adduction to proteins in ESI have been developed that do not require
18 removal of the salts from solution prior to ion formation. Buffer loading,^{21, 22} in which high
19 concentrations of a volatile buffer, typically ammonium acetate, is added to solution, reduces
20 sodium ion adduction to proteins and reduces the number of salt ion clusters formed. The
21 addition of 7 M ammonium acetate to aqueous solutions containing 20 mM NaCl results in an
22 increase in the S/N of the most abundant ion of cytochrome *c* and ubiquitin by more than 6-fold
23 and 11-fold, respectively, compared to solutions without the buffer added.²¹ Buffer loading also
24 works well for proteins that require high concentrations of salt to function or assemble, like
25 concanavalin A.²² Other ammonium buffer salts can also effectively reduce sodium ion
26 adduction to proteins, and can do so at much lower concentrations. For example, 25 mM
27 ammonium bromide added to an aqueous 1 mM NaCl solution containing ubiquitin decreases the
28 average number of sodium ions adducted to the most abundant charge state of the protein from
29 6.0 to 0.4 and increases the S/N of this ion by a factor of 66.^{25, 27} The ability of different salts to
30
31
32
33
34
35
36
37
38
39
40
41
42
43
44
45
46
47
48
49
50
51
52
53
54
55
56
57
58
59
60

1
2
3 desalt proteins in the ESI droplet is related to the proton affinities of the anions, where anions
4
5 with low proton affinities lead to less sodium adduction.²⁷ However, anions with low proton
6
7 affinities also tend to adduct to the protein as an acid molecule and form ion clusters,²⁷ which can
8
9 decrease the protein ion signal. Konermann and coworkers suggested that some salts, such as
10
11 citrate and tartrate, may chelate ions in solution, such as calcium, that can non-specifically
12
13 adduct to proteins.³⁷
14
15

16
17 Supercharging reagents can be used to produce high charge-state ions by ESI from both
18
19 denaturing³⁸⁻⁴⁵ and native solutions.⁴⁶⁻⁵⁵ Supercharging reagents are high-boiling point
20
21 compounds that are typically added in small amounts (1-2%) to sample solutions prior to ESI.³⁸⁻
22
23
24
25
26
27
28
29
30
31
32
33
34
35
36
37
38
39
40
41
42
43
44
45
46
47
48
49
50
51
52
53
54
55
56
57
58
59
60

Supercharging reagents can also increase protein charging from denaturing solutions in which the protein is initially unfolded,³⁸⁻⁴⁵ a result attributable to many factors, including the high surface tension of supercharging reagents compared to water-methanol-acid solutions.⁴⁰ Droplets with higher surface tension can support more charge, and this high charge density can result in the formation of high charge-state ions. Loo and coworkers showed that the presence of *m*-NBA or sulfolane in the spray solvent in desorption electrospray ionization (DESI) experiments performed on HPLC column effluents containing trifluoroacetic acid (TFA)

1
2
3 decreases TFA cluster ion intensity and increases protein S/N compared to when no
4
5 supercharging reagent is in the DESI solvent.²⁰ The authors suggested that this result is likely
6
7 due to the supercharging reagent binding to TFA anions, thereby inhibiting TFA cluster
8
9 formation, or preventing TFA dissociation into TFA anion and a free proton in solution, reducing
10
11 the amount of free TFA anion in solution.²⁰
12
13

14
15 Here, we show that *m*-NBA and sulfolane, two of the most common supercharging
16
17 reagents, reduce sodium adduction to protein ions formed by nESI from native solutions.
18
19 Sulfolane is more effective than *m*-NBA at reducing sodium ion adduction while still preserving
20
21 non-covalent protein-protein and protein-ligand interactions. However, the use of *m*-NBA to
22
23 desalt protein ions can lead to up to a 7-fold increase in protein ion S/N as a result of fewer
24
25 clusters and lower chemical noise. This new method for desalting protein ions in nESI can
26
27 improve the mass measuring accuracy for large proteins and protein complexes and can be used
28
29 to resolve different glycoforms or ligand-adducted forms of proteins that are otherwise obscured
30
31 by peak broadening resulting from extensive sodium adduction. *m*-NBA and sulfolane bind to
32
33 sodium ions, suggesting that sodium sequestration by supercharging reagents may be the origin
34
35 of the desalting effect of these supercharging reagents.
36
37
38
39
40
41
42

43 **Experimental**

44
45 Experiments were performed using a Waters Quadrupole-Time-of-Flight (Q-TOF)
46
47 Premier (Waters, Milford, MA) mass spectrometer. Protein ions were formed by
48
49 nanoelectrospray from borosilicate capillaries (1.0 mm o.d./0.78 mm i.d., Sutter Instruments,
50
51 Novato, CA, USA) that were pulled to a tip i.d. of ~1 μm with a Flaming/Brown micropipette
52
53 puller (Model P-87, Sutter Instruments, Novato, CA, USA) and positioned ~2 mm from the
54
55
56
57
58
59
60

1
2
3 capillary inlet to the Q-TOF instrument. Nanoelectrospray was initiated by applying a potential
4
5 of about +1.0 kV to a 0.127 mm diameter platinum wire inserted into the capillary and in contact
6
7 with the sample solution. The nanoelectrospray potential was adjusted to optimize protein ion
8
9 S/N for each tip. Values of the average number of sodium ions adducted are from four replicate
10
11 measurements using four different nanospray emitters to account for tip-to-tip variation in
12
13 adduction levels. All comparative S/N measurements were made using the same
14
15 nanoelectrospray capillary to eliminate tip-to-tip variability, and the capillary was washed with
16
17 methanol and water between each solution. All proteins were purchased as lyophilized powders
18
19 from Sigma except for barnase and barstar, which were expressed in *E. coli* and purified as
20
21 described previously.⁵⁶ Ammonium bicarbonate, sodium chloride, platinum wire, and
22
23 supercharging reagents were obtained from Sigma (St. Louis, MO, USA).
24
25
26
27
28
29
30
31

32 Results and Discussion

33
34 **Effects of supercharging reagents on protein charge and sodium ion adduction.** The
35
36 average charge of ubiquitin ions formed by nESI from 5 μ M ubiquitin in 10 mM ammonium
37
38 bicarbonate and 1 mM sodium chloride (pH 7.8) is $5.33 \pm 0.01+$ (Figure 1a). There is extensive
39
40 sodium ion adduction to the 5+ - 7+ charge states, with more adduction on lower charge states.
41
42 The average number of sodium ions adducted to these charge states are 3.5 ± 0.1 , 3.5 ± 0.1 , and
43
44 2.0 ± 0.4 , respectively (Table 1 and Table S-1). Mass spectra obtained from the same solution
45
46 with either 1.5% *m*-NBA or 2.5% sulfolane are shown in Figures 1b and 1c, respectively. The
47
48 average charge of ubiquitin formed from these respective solutions is $7.1 \pm 0.1+$ and $6.3 \pm 0.1+$.
49
50 The average number of sodium ions adducted to the 5+ - 7+ charge states is significantly lower
51
52 when either supercharging reagent is present. The average number of sodium ions adducted to
53
54
55
56
57
58
59
60

1
2
3 the most abundant charge state decreases from 3.5 ± 0.1 in the spectrum obtained without a
4 reagent to 1.2 ± 0.2 with *m*-NBA and 0.44 ± 0.03 with sulfolane. *m*-NBA is not soluble in
5 aqueous solution above ~1.5%, and at the concentration used for both supercharging reagents,
6 there should be little effect on the protein structure in solution prior to droplet formation by
7 nESI.^{46, 51, 52} The presence of the 1 mM sodium chloride in these protein solutions has only a
8 small effect on the charge of the protein ions formed with supercharging reagents. For example,
9 the average charge of ubiquitin ions produced by nESI from solutions containing both added
10 sodium chloride and *m*-NBA is only about one charge lower compared to that with the same
11 amount of *m*-NBA but without sodium chloride added. The slightly lower charging with sodium
12 chloride is likely due to stabilization of folded protein structure in the ESI droplet as a result of
13 the higher ionic strength.
14
15
16
17
18
19
20
21
22
23
24
25
26
27
28

29 The same experiments were performed with nine other proteins for which sodium adducts
30 could be resolved. The results are given in Table 1 for the most abundant charge state in each
31 spectrum and in Table S-1 for every charge state. The presence of *m*-NBA or sulfolane in
32 aqueous solutions containing sodium decreases the average number of sodium ions adducted to
33 both the most abundant charge state and any given charge state in the mass spectra for *all*
34 proteins. For these ten proteins, the number of sodium ions adducted to the most abundant
35 charge state decreases by an average of 58% with *m*-NBA, and by 80% with sulfolane compared
36 to solutions without supercharging reagents. Thus, adding small quantities of supercharging
37 reagents is an effective way to desalt protein ions in aqueous solutions containing sodium and
38 also increases the average charge state of protein ions formed from these native solutions.
39
40
41
42
43
44
45
46
47
48
49
50
51
52
53
54
55
56
57
58
59
60

1
2
3 nESI is protein-dependent. However, the extent of adduct reduction with supercharging reagents
4
5 does not correlate well with any of several protein characteristics, such as protein size, pI, or
6
7 number of disulfide bonds (Table 1).
8
9

10 With 2.5% sulfolane, the average charge of the proteins increases by an average of 1.0+
11
12 from solutions containing no supercharging reagent, whereas with 1.5% *m*-NBA, the average
13
14 charge increases by 2.5+. This result is consistent with previous results that showed that
15
16 sulfolane, on a per volume basis, is a less effective supercharging reagent than *m*-NBA, and
17
18 therefore likely disrupts native protein structure to a lesser extent than *m*-NBA.⁵¹
19
20
21

22 The effectiveness of sulfolane at protein ion desalting without extensively perturbing
23
24 protein structure is important for desalting non-covalent protein-protein or protein-ligand
25
26 complexes. Nano electrospray of myoglobin (Figure 2, Table 1), which contains a non-
27
28 covalently bound heme group, from an aqueous solution with 10 mM ammonium bicarbonate
29
30 and 1 mM NaCl results in 100% holo-myoglobin ions. Only 48% of the ion population is holo-
31
32 myoglobin with 1.5% *m*-NBA, and the charge-state distribution is bimodal, indicating that some
33
34 of the myoglobin is unfolded in the nESI droplet. In contrast, holo-myoglobin is 83% of the ion
35
36 population observed with 2.5% sulfolane, and the monomodal charge-state distribution indicates
37
38 that there is less perturbation of the folded form of the protein in the nESI droplet.
39
40
41
42

43 Protein-protein complexes, such as the 22 kDa heterodimer barnase-barstar (Figure 3,
44
45 Table 2), are also preserved better with 2.5% sulfolane than with 1.5% *m*-NBA. A nESI mass
46
47 spectrum of a 6:5 molar ratio mixture of barstar and barnase in sodiated ammonium bicarbonate
48
49 solution shows the 8+ through 10+ charge-state ions of the barnase-barstar complex and ions of
50
51 barstar, which is the excess reagent (Figure 3a). Because the barnase-barstar complex has a very
52
53 low dissociation constant (25 ± 5 pM in aqueous ammonium bicarbonate solution, pH 7.2, 1%
54
55
56
57
58
59
60

glycerol⁵⁷), nearly all of the barnase, the limiting reagent, is present in the complex, and ions of free barnase are not observed in the mass spectrum. The most abundant charge state of the complex is 9+, and there is an average of 4.0 sodium ions adducted. In a mass spectrum of the same solution containing 1.5% *m*-NBA (Figure 3b), the charge-state distribution is shifted to higher charge, and the appearance of barnase ions indicates that some solution-phase unfolding and partial dissociation of the complex occur in the nESI droplet. The most abundant charge state of the complex shifts to 11+ (an average of 0.4 sodium ions adducted), and only 38% of the complex remains intact. In comparison, the charge of the most abundant ion of the complex increases to only 10+, and 84% of the barnase-barstar complex remains intact in the mass spectrum of the same solution with sodium and 2.5% sulfolane (Figure 3c). The average number of sodium ions adducted to the most abundant charge state with sulfolane is 0.6, similar to that obtained from the *m*-NBA solution. The examples of myoglobin and barnase-barstar illustrate that using sulfolane as a desalting agent can be particularly useful in native nESI experiments where measurement of ions from the intact complex is desired, such as when complex stoichiometry or the presence of ligand binding is being determined, although caution in interpreting these data is necessary owing to destabilization and possible dissociation of the complexes in the nESI droplet.

Improving mass accuracy for large proteins and protein complexes. The charge-state distributions of large proteins and protein complexes in native ESI shift to higher m/z with increasing molecular weight.⁵⁸ The inability to resolve individual sodium ion adducts at high m/z can reduce mass measuring accuracy and obscure the presence of different populations of covalently and non-covalently modified forms of the protein. Robinson and coworkers showed that retention of solvent and buffer molecules by large proteins and protein complexes in ESI

1
2
3 results in measured masses much higher than calculated masses. For example, the measured
4 mass of the 685 kDa 20S proteasome lacking an α -subunit is ~7 kDa higher than the calculated
5 mass.²³
6
7
8
9

10 A native nESI mass spectrum of human holo-transferrin (79.7 kDa) in 10 mM ammonium
11 bicarbonate with no sodium salt added is shown in Figure 4a. Four peaks corresponding to four
12 different glycoforms of the protein are evident in the 18-20+ charge states. These glycoforms
13 were determined from the masses measured from a denaturing solution of the protein (Figure S-
14 1) to correspond well with the two oligosaccharide (one diantennary and one triantennary)
15 glycosylations to this protein that were identified by van Halbeek and coworkers⁵⁹ both with and
16 without a fucosylation site on the oligosaccharide. The glycoforms are labelled as **A**) two
17 diantennary oligosaccharides; **B**) **A** with one fucosylation; **C**) one di- with one triantennary
18 oligosaccharide; and **D**) **C** with one fucosylation. The average masses measured for each of
19 these four glycoforms formed by nESI from native solution (Figure 4a, Table 3) are on average
20 ~6 Da higher than the measured masses of these ions formed from denaturing solution (the
21 calculated m/z is indicated by the dashed lines in Figure 4), indicating that on average, less than
22 one sodium ion is adducted to the protein. With 1 mM NaCl in the same solution (Figure 4b),
23 the centroids of each peak shift to higher m/z so that the masses of ions **A** and **C** increase by
24 ~168 Da and ~189 Da, respectively. This additional mass corresponds to an average of 8.3 and
25 9.3 sodium ions adducted to these two glycoforms, respectively, and the peak widths in the
26 spectrum are broad due to sodium adduction such that the fucosylated ions **B** and **D** are no longer
27 evident in the mass spectrum. Sodium adducts also lead to a significant increase in the baseline
28 at higher m/z . With 1.5% *m*-NBA (Figure 4c), the charge-state distribution is shifted to higher
29 charge, the most abundant charge state being 22+, and all of the peaks in the ion distribution are
30
31
32
33
34
35
36
37
38
39
40
41
42
43
44
45
46
47
48
49
50
51
52
53
54
55
56
57
58
59
60

1
2
3 still broad as a result of sodium adduction. The fucosylated ions **B** and **D** are not resolved, and
4
5 even ion **C** is evident only as a shoulder on the main **A** peak. Ions **A** and **C** have masses that are
6
7 ~230 Da and ~300 Da higher than those formed from nESI from aqueous solutions without
8
9 sodium, and ~62 Da and ~111 Da higher than those from aqueous solutions with sodium. The
10
11 higher mass of these ions compared to those formed from solutions containing sodium without
12
13 supercharging reagents may be due to *m*-NBA adduction to the protein, which has been observed
14
15 before by Loo and coworkers for smaller proteins.⁴⁶ With 2.5% sulfolane (Figure 4d), the most
16
17 abundant charge state is 20+, and *all* glycosylated ions are evident in the mass spectrum, with
18
19 ions A, C, and D resolved, and ion B distinguishable as a shoulder on the peak of ion A. The
20
21 increase in mass for each glycosylated form of the protein is \leq ~69 Da, or ~3 sodium ions. Thus,
22
23 addition of sulfolane not only enables a more accurate mass measurement from a solution
24
25 containing sodium, but it also reveals two additional fucosylated species present in solution that
26
27 were unresolvable in the mass spectrum from this same solution without sulfolane present
28
29 (Figure 4b).
30
31
32
33
34
35

36 A mass spectrum of the 146 kDa homotetramer of rabbit lactate dehydrogenase (LDH)
37
38 formed by nESI from 10 mM ammonium bicarbonate is shown in Figure 5a (dashed lines are the
39
40 calculated m/z values). The measured mass of the tetramer is $146,004 \pm 18$ Da, which is close to
41
42 the calculated mass of 145,996 Da based on the monomer mass determined from a spectrum of
43
44 LDH obtained under denaturing conditions (Figure S-2). The 8 Da mass difference corresponds
45
46 to an average of ~0.4 sodium ions adducted. There is also a distribution of LDH tetramer with a
47
48 mass of $146,619 \pm 14$ Da corresponding to bound NADH, a cofactor of LDH that has a mass of
49
50 664 Da.⁶⁰ With NaCl added at 5 mM concentration to this solution (Figure 5b), the LDH
51
52 tetramer peaks are broader due to sodium ion adduction, and the NADH adduct is unresolved.
53
54
55
56
57
58
59
60

1
2
3 The measured mass of the tetramer is $146,521 \pm 23$ Da, and corresponds to a mass increase of
4
5 ~ 525 Da, or an average of ~ 23.9 sodium ions adducted. The peaks in a mass spectrum of rabbit
6
7 LDH in the same solution containing NaCl but with 2.5% sulfolane (Figure 5c) are significantly
8
9 narrower compared to spectra without the supercharging reagent (Figure 5b). The non-
10
11 covalently bound NADH is clearly resolved on all of the tetramer peaks, except for the lowest
12
13 charge state, and no dissociation of the NADH from the complex or increase in the average
14
15 charge of the protein complex is evident, indicating that sulfolane does not significantly disrupt
16
17 the structure of this protein complex. The addition of sulfolane also reduces the error in mass
18
19 measurement associated with sodium adduction. The measured masses for the tetramer with and
20
21 without NADH bound are $146,025 \pm 26$ Da and $146,763 \pm 13$ Da, respectively, with sulfolane,
22
23 ~ 29 Da and ~ 103 Da higher than the calculated mass, corresponding to an average of only ~ 1.3
24
25 and ~ 4.7 sodium ions adducted, respectively. There is no data shown for LDH with 1.5% *m*-
26
27 NBA because the protein precipitates out of solution upon addition of the supercharging reagent
28
29 as evidenced by solution clouding, suggesting that the stabilities of some proteins can be affected
30
31 by even low concentrations of supercharging reagents.
32
33
34
35
36
37
38

39 **Effects on S/N and detection limits.** Loo and coworkers reported binding of *m*-NBA to
40
41 ammonium and sodium cations at low *m/z*, but no protonated *m*-NBA was observed.⁴⁶ It is
42
43 possible that supercharging reagents reduce sodium ion adduction to proteins by binding to
44
45 sodium ions in solution. Mass spectra of 5 μ M barstar formed by nESI from aqueous solutions
46
47 containing 10 mM ammonium bicarbonate and 1 mM NaCl with and without supercharging
48
49 reagents are shown in Figure 6. In the expanded region below *m/z* = 700, many clusters
50
51 containing sodium, chloride, bicarbonate, and ammonium are observed without supercharging
52
53 reagents (Figure 6a), resulting in significant chemical noise at high *m/z* where protein ion signal
54
55
56
57
58
59
60

1
2
3 is often observed (Table S-3). This can lower the protein ion S/N (Table S-3). With *m*-NBA
4
5 (Figure 6b), the dominant low m/z ions are ammonium and sodium ions complexed with one or
6
7 two *m*-NBA molecules, but there are also some low abundance ions containing sodium, chloride,
8
9 bicarbonate, and ammonium, as well as sodium chloride and sodium bicarbonate cluster ions
10
11 bound to *m*-NBA. Thus, *m*-NBA appears to inhibit the formation of salt cluster ions. There are
12
13 no clusters above $m/z \sim 700$ (Figure 6b, inset), resulting in very low chemical noise in the higher
14
15 m/z region of the spectrum where barstar ions are observed (Table S-3). With sulfolane, sodium
16
17 and ammonium complexed to one, two, or three sulfolane molecules are most abundant (Figure
18
19 6c). Clusters extend to $m/z \sim 1600$, resulting in high chemical noise in the region where protein
20
21 ions are often observed that is similar to the chemical noise without supercharging reagents
22
23 (Figure 6a and c insets; Table S-3).
24
25
26
27
28

29 Dearden and coworkers⁶¹ showed that alkali cations can be removed from peptides and
30
31 small protein ions in the gas phase by crown ether molecules, leading to a concomitant decrease
32
33 in the peptide or protein charge as the cations are removed. The average charge of protein ions
34
35 formed from solutions containing *m*-NBA and sulfolane with sodium chloride is typically the
36
37 same or higher than that obtained without these reagents. This indicates that protein desalting
38
39 with *m*-NBA and sulfolane is not solely due to these supercharging reagents stripping sodium
40
41 ions from proteins in the gas phase. Supercharging reagents must be influencing the amount of
42
43 sodium ion adduction to proteins in solution, most likely in the nESI droplet, where enrichment
44
45 of both sodium ions and supercharging reagent occurs. It is likely that sequestration of sodium
46
47 ions by supercharging reagents is the cause of the reduced sodium ion adduction to protein ions
48
49 observed with *m*-NBA and sulfolane. Other groups have reported adduction of supercharging
50
51 reagents to protein ions,^{46, 54, 62} although no obvious adduction was observed in our study. It is
52
53
54
55
56
57
58
59
60

1
2
3 plausible that the supercharging reagents may also block sites on the protein where sodium ions
4
5 bind.
6
7

8 Addition of *m*-NBA or sulfolane to aqueous solutions containing sodium substantially
9
10 increases the S/N of some protein ions owing to reduced chemical noise and fewer sodiated
11
12 species over which protein signal is spread (Table S-3, Figure S-3). For example, the S/N of the
13
14 most abundant ion of barstar formed from a 5 μ M solution is 7-fold higher with *m*-NBA than
15
16 without this supercharging reagent, and there is a 2-fold enhancement with sulfolane (Table S-3).
17
18 Supercharging reagents can also decrease the limit of detection (LOD) for these protein ions
19
20 formed from solutions containing sodium. The LOD for barstar from sodiated solutions,
21
22 determined from protein concentration dependent measurements, is almost an order of magnitude
23
24 lower with *m*-NBA than without (0.02 μ M versus 0.12 μ M) (Table S-3). However, the effect of
25
26 supercharging reagents on the S/N and detection limit is protein dependent, and an improvement
27
28 was not observed for all proteins (Table S-3). This may be due to differences in the chemical
29
30 and salt impurities in the protein samples.
31
32
33
34
35
36
37
38

39 **Conclusions**

40
41 Supercharging reagents can increase the charge of protein ions formed by nESI from both
42
43 native and denaturing solutions, but they also have the added benefit of effectively reducing
44
45 sodium ion adduction to protein and protein complex ions formed from aqueous solutions.
46
47 Addition of <3% of *m*-NBA or sulfolane to aqueous solutions containing millimolar
48
49 concentrations of sodium can reduce sodium adduction to protein ions by an average of ~58%
50
51 and ~80%, respectively. The presence of *m*-NBA in protein solutions containing sodium reduces
52
53 chemical noise caused by clusters, resulting in up to a factor of 7 enhancement in S/N for some
54
55
56
57
58
59
60

1
2
3 protein ions, whereas the presence of sulfolane has little effect on protein ion S/N due to salt
4
5 cluster formation that extends to high m/z . Sodium adduction to both *m*-NBA and sulfolane
6
7 occurs, and this may sequester a sufficient number of sodium ions such that sodium adduction to
8
9 proteins is significantly reduced. In the future, it would be interesting to investigate whether the
10
11 use of supercharging reagents for desalting protein ions formed by nESI is effective for other
12
13 ions that commonly bind nonspecifically to proteins, such as potassium and calcium, or for
14
15 anions, such as sulfate and phosphate, which are often added as buffers to native protein
16
17
18
19 solutions.
20
21
22
23

24 **Acknowledgements**

25
26
27 The authors thank the National Institutes of Health (Grant No. R01GM097357) and the National
28
29 Science Foundation (Graduate Research Fellowship for CAC; Grant No. DGE1106400) for
30
31 financial support.
32
33
34
35
36
37
38
39
40
41
42
43
44
45
46
47
48
49
50
51
52
53
54
55
56
57
58
59
60

References

1. F. Hofmeister, *Archiv f. experiment. Pathol. u. Pharmakol*, 1888, **24**, 247-260.
2. P. Lo Nostro and B. W. Ninham, *Chem. Rev.*, 2012, **112**, 2286-2322.
3. R. L. Baldwin, *Biophys. J.*, 1996, **71**, 2056-2063.
4. E. T. J. van den Bremer, W. Jiskoot, R. James, G. R. Moore, C. Kleanthous, A. J. R. Heck and C. S. Maier, *Protein Sci.*, 2002, **11**, 1738-1752.
5. M. M. Zhu, D. L. Rempel, J. Zhao, D. E. Giblin and M. L. Gross, *Biochemistry*, 2003, **42**, 15388-15397.
6. W. Maret, *J. Inorg. Biochem.*, 2012, **111**, 110-116.
7. G. Fritz, in *Calcium-Binding Proteins and RAGE*, ed. C. W. Heizmann, Humana Press, 2013, vol. 963, ch. 6, pp. 87-97.
8. Y. Zhang and P. S. Cremer, *Annu. Rev. Phys. Chem.*, 2010, **61**, 63-83.
9. T. E. Creighton, *Proteins: Structures and Molecular Properties*, W. H. Freeman and Co., New York, 2nd edn., 1993.
10. K. A. Weber, L. A. Achenback and J. D. Coates, *Nat. Rev. Micro.*, 2006, **4**, 752-764.
11. F. Hannemann, A. Bichet, K. M. Ewen and R. Bernhardt, *Biochim. Biophys. Acta*, 2007, **1770**, 330-344.
12. C. Toyoshima and H. Nomura, *Nature*, 2002, **418**, 605-611.
13. G. Gamba, *Physiol. Rev.*, 2005, **85**, 423-493.
14. J. Ghuman, P. A. Zunszain, I. Petitpas, A. A. Bhattacharya, M. Otagiri and S. Curry, *J. Mol. Biol.*, 2005, **353**, 38-52.
15. M. G. McCammon, D. J. Scott, C. A. Keetch, L. H. Greene, H. E. Purkey, H. M. Petrassi, J. W. Kelly and C. V. Robinson, *Structure*, 2002, **10**, 851-863.

- 1
2
3
4
5
6
7
8
9
10
11
12
13
14
15
16
17
18
19
20
21
22
23
24
25
26
27
28
29
30
31
32
33
34
35
36
37
38
39
40
41
42
43
44
45
46
47
48
49
50
51
52
53
54
55
56
57
58
59
60
16. H. Hernández, Robinson, C.V., *Nat. Protocols*, 2007, **2**, 715-726.
 17. G. Wang and R. B. Cole, *Anal. Chem.*, 1994, **66**, 3702-3708.
 18. P. Pan and S. A. McLuckey, *Anal. Chem.*, 2003, **75**, 5468-5474.
 19. U. A. Mirza and B. T. Chait, *Anal. Chem.*, 1994, **66**, 2898-2904.
 20. Y. Liu, Z. Miao, R. Lakshmanan, R. R. O. Loo, J. A. Loo and H. Chen, *Int. J. Mass Spectrom.*, 2012, **325–327**, 161-166.
 21. A. T. Iavarone, O. A. Udekwu and E. R. Williams, *Anal. Chem.*, 2004, **76**, 3944-3950.
 22. H. J. Sterling, J. D. Batchelor, D. E. Wemmer and E. R. Williams, *J. Am. Soc. Mass Spectrom.*, 2010, **21**, 1045-1049.
 23. A. R. McKay, B. T. Ruotolo, L. L. Ilag and C. V. Robinson, *J. Am. Chem. Soc.*, 2006, **128**, 11433-11442.
 24. J. Freeke, C. V. Robinson and B. T. Ruotolo, *Int. J. Mass Spectrom.*, 2010, **298**, 91-98.
 25. T. G. Flick, C. A. Cassou, T. M. Chang and E. R. Williams, *Anal. Chem.*, 2012, **84**, 7511-7517.
 26. P. Pan, H. P. Gunawardena, Y. Xia and S. A. McLuckey, *Anal. Chem.*, 2004, **76**, 1165-1174.
 27. T. Flick, S. Merenbloom and E. Williams, *J. Am. Soc. Mass Spectrom.*, 2011, **22**, 1968-1977.
 28. T. Flick and E. R. Williams, *J. Am. Soc. Mass Spectrom.*, 2012, **23**, 1885-1895.
 29. K. Benkestock, P.-O. Edlund and J. Roeraade, *Rapid Commun. Mass Spectrom.*, 2002, **16**, 2054-2059.
 30. F. Xiang, Y. Lin, J. Wen, D. W. Matson and R. D. Smith, *Anal. Chem.*, 1999, **71**, 1485-1490.

- 1
2
3
4
5
6
7
8
9
10
11
12
13
14
15
16
17
18
19
20
21
22
23
24
25
26
27
28
29
30
31
32
33
34
35
36
37
38
39
40
41
42
43
44
45
46
47
48
49
50
51
52
53
54
55
56
57
58
59
60
31. Y. Jiang and S. A. Hofstadler, *Anal. Biochem.*, 2003, **316**, 50-57.
32. M. Borges-Alvarez, F. Benavente, J. Barbosa and V. Sanz-Nebot, *Rapid Commun. Mass Spectrom.*, 2010, **24**, 1411-1418.
33. M. L. DeMarco and C.-A. D. Burnham, *Am. J. Clin. Path.*, 2014, **141**, 204-212.
34. M. Prodanov, I. Garrido, V. Vacas, R. Lebrón-Aguilar, M. Dueñas, C. Gómez-Cordovés and B. Bartolomé, *Anal. Chim. Acta*, 2008, **609**, 241-251.
35. J. D. Batchelor, H. J. Sterling, E. Hong, E. R. Williams and D. E. Wemmer, *J. Mol. Biol.*, 2009, **393**, 634-643.
36. J. D. Batchelor, M. Doucleff, C.-J. Lee, K. Matsubara, S. De Carlo, J. Heideker, M. H. Lamers, J. G. Pelton and D. E. Wemmer, *J. Mol. Biol.*, 2008, **384**, 1058-1075.
37. J. Pan, K. Xu, X. Yang, W.-Y. Choy and L. Konermann, *Anal. Chem.*, 2009, **81**, 5008-5015.
38. A. T. Iavarone, J. C. Jurchen and E. R. Williams, *Anal. Chem.*, 2001, **73**, 1455-1460.
39. A. T. Iavarone and E. R. Williams, *Int. J. Mass Spectrom.*, 2002, **219**, 63-72.
40. A. T. Iavarone and E. R. Williams, *J. Am. Chem. Soc.*, 2003, **125**, 2319-2327.
41. A. T. Iavarone and E. R. Williams, *Anal. Chem.*, 2003, **75**, 4525-4533.
42. S. K. Sze, Y. Ge, H. Oh and F. W. McLafferty, *Proc. Natl. Acad. Sci. U. S. A.*, 2002, **99**, 1774-1779.
43. J. A. Madsen and J. S. Brodbelt, *J. Am. Soc. Mass Spectrom.*, 2009, **20**, 349-358.
44. F. Kjeldsen, A. M. B. Giessing, C. R. Ingrell and O. N. Jensen, *Anal. Chem.*, 2007, **79**, 9243-9252.
45. S. M. Miladinović, L. Fornelli, Y. Lu, K. M. Piech, H. H. Girault and Y. O. Tsybin, *Anal. Chem.*, 2012, **84**, 4647-4651.

- 1
2
3
4
5
6
7
8
9
10
11
12
13
14
15
16
17
18
19
20
21
22
23
24
25
26
27
28
29
30
31
32
33
34
35
36
37
38
39
40
41
42
43
44
45
46
47
48
49
50
51
52
53
54
55
56
57
58
59
60
46. S. H. Lomeli, I. X. Peng, S. Yin, R. R. O. Loo and J. A. Loo, *J. Am. Soc. Mass Spectrom.*, 2010, **21**, 127-131.
 47. S. H. Lomeli, S. Yin, R. R. O. Loo and J. A. Loo, *J. Am. Soc. Mass Spectrom.*, 2009, **20**, 593-596.
 48. H. J. Sterling, A. F. Kintzer, G. K. Feld, C. A. Cassou, B. A. Krantz and E. R. Williams, *J. Am. Soc. Mass Spectrom.*, 2012, **23**, 191-200.
 49. H. J. Sterling, C. A. Cassou, M. J. Trnka, A. L. Burlingame, B. A. Krantz and E. R. Williams, *Phys. Chem. Chem. Phys.*, 2011, **13**, 18288-18296.
 50. H. J. Sterling, J. S. Prell, C. A. Cassou and E. R. Williams, *J. Am. Soc. Mass Spectrom.*, 2011, **22**, 1178-1186.
 51. H. J. Sterling, M. P. Daly, G. K. Feld, K. L. Thoren, A. F. Kintzer, B. A. Krantz and E. R. Williams, *J. Am. Soc. Mass Spectrom.*, 2010, **21**, 1762-1774.
 52. H. J. Sterling and E. R. Williams, *Anal. Chem.*, 2010, **82**, 9050-9057.
 53. H. J. Sterling and E. R. Williams, *J. Am. Soc. Mass Spectrom.*, 2009, **20**, 1933-1943.
 54. C. J. Hogan, R. R. O. Loo, J. A. Loo and J. F. de la Moraa, *Phys. Chem. Chem. Phys.*, 2010, **12**, 13476-13483.
 55. E. B. Erba, B. T. Ruotolo, D. Barsky and C. V. Robinson, *Anal. Chem.*, 2010, **82**, 9702-9710.
 56. S. R. Krishnaswamy, E. R. Williams and J. F. Kirsch, *Protein Sci.*, 2006, **15**, 1465-1475.
 57. R. W. Hartley, *Methods Enzymol.*, 2001, **341**, 599-611.
 58. J. F. de la Mora, *Anal. Chim. Acta*, 2000, **406**, 93-104.
 59. D. Fu and H. van Halbeek, *Anal. Biochem.*, 1992, **206**, 53-63.
 60. J. W. Burgner and W. J. Ray, *Biochemistry*, 1984, **23**, 3636-3648.

- 1
2
3
4 61. R. M. Pope, N. Shen, S. A. Hofstadler and D. V. Dearden, *Int. J. Mass Spectrom.*, 1998,
5
6 **175**, 179-186.
7
8 62. K. Douglass and A. Venter, *J. Am. Soc. Mass Spectrom.*, 2012, **23**, 489-497.
9
10
11
12
13
14
15
16
17
18
19
20
21
22
23
24
25
26
27
28
29
30
31
32
33
34
35
36
37
38
39
40
41
42
43
44
45
46
47
48
49
50
51
52
53
54
55
56
57
58
59
60

Table 1. Average charge and average number of sodium ions adducted to the most abundant protein charge state formed by nESI from aqueous solutions containing 5 μ M protein, 10 mM ammonium bicarbonate, and 1 mM NaCl with no supercharging reagent, with 1.5% *m*-NBA, or with 2.5% sulfolane.

Protein	Average charge	Average # Na adducts to (most abundant charge state)	Protein size	Protein pI	# Disulfide bonds
Ubiquitin	5.33 \pm 0.01	3.5 \pm 0.1 (5+)	8.6 kDa	6.6	0
<i>m</i> -NBA	7.1 \pm 0.1	1.2 \pm 0.2 (7+)			
sulfolane	6.3 \pm 0.1	0.44 \pm 0.03 (6+)			
Barstar	5.5 \pm 0.1	3.5 \pm 0.4 (5+)	10.2 kDa	4.7	0
<i>m</i> -NBA	7.1 \pm 0.1	1.4 \pm 0.2 (7+)			
sulfolane	5.7 \pm 0.1	1.0 \pm 0.4 (6+)			
Cytochrome c	6.5 \pm 0.1	2.5 \pm 0.2 (7+)	12.3 kDa	9.6	0
<i>m</i> -NBA	9.42 \pm 0.04	0.93 \pm 0.01 (9+)			
sulfolane	8.6 \pm 0.2	0.17 \pm 0.01 (9+)			
Ribonuclease A	6.9 \pm 0.1	4.5 \pm 0.2 (7+)	13.7 kDa	9.6	4
<i>m</i> -NBA	9.16 \pm 0.03	1.2 \pm 0.2 (9+)			
sulfolane	7.7 \pm 0.1	0.5 \pm 0.1 (8)			
α-Lactalbumin	6.8 \pm 0.1	3.3 \pm 0.5 (7+)	14.2 kDa	4.8	4
<i>m</i> -NBA	8.9 \pm 0.1	1.7 \pm 0.1 (9+)			
sulfolane	7.2 \pm 0.2	1.0 \pm 0.3 (8+)			
Lysozyme	7.5 \pm 0.1	1.7 \pm 0.1 (8+)	14.3 kDa	11.4	4
<i>m</i> -NBA	9.9 \pm 0.1	0.60 \pm 0.03 (10+)			
sulfolane	8.8 \pm 0.3	0.4 \pm 0.1 (9+)			
holo-Myoglobin	8.2 \pm 0.1	3.9 \pm 0.4 (8+)	17.6 kDa	7.4	0
<i>m</i> -NBA	11.2 \pm 0.2	0.79 \pm 0.02 (11+)			
sulfolane	9.8 \pm 0.4	0.3 \pm 0.1 (10+)			
apo-Myoglobin	--	--	17.0 kDa	7.4	0
<i>m</i> -NBA	12.4 \pm 0.6	0.71 \pm 0.04 (11+)			
sulfolane	9.2 \pm 0.3	0.28 \pm 0.01 (9+)			
β-lactoglobulin	8.13 \pm 0.04	4.0 \pm 0.2 (8+)	18.3 kDa	4.8	3
<i>m</i> -NBA	10.41 \pm 0.03	2.88 \pm 0.03 (10+)			
sulfolane	8.5 \pm 0.2	1.9 \pm 0.2 (9+)			
Carbonic Anhydrase	9.8 \pm 0.1	4.5 \pm 0.6 (10+)	29.0 kDa	6.4	0
<i>m</i> -NBA	13.5 \pm 0.3	3.0 \pm 0.5 (13+)			
sulfolane	11.7 \pm 0.1	0.7 \pm 0.2 (12+)			

Table 2. Average charge state, average number of sodium adducts to the most abundant charge state, and fractional population of barnase-barstar and free barnase formed by nESI from aqueous solutions containing 6 μ M barstar, 5 μ M barnase, 10 mM ammonium bicarbonate, and 1 mM NaCl with no supercharging reagent, with 1.5% *m*-NBA, or with 2.5% sulfolane.

Protein	Average charge	Average # Na adducts to most abundant charge state	% Total protein ion population
Barnase-Barstar	8.8+	4.0	100%
+ <i>m</i>-NBA	11.0+	0.4	38%
+ sulfolane	9.6+	0.6	84%
Free Barnase	--	--	0%
+ <i>m</i>-NBA	6.4+	0.7	62%
+ sulfolane	5.7+	0.3	16%

Table 3. Measured masses and average sodium ion adduction for four different glycoforms of holo-transferrin formed by nESI from aqueous solutions containing 10 mM ammonium bicarbonate (ABC) and 1 mM NaCl with no supercharging reagent, with 1.5% *m*-NBA, or with 2.5% sulfolane.

Protein mass (Da)					
Protein glycoforms	10 mM ABC	10 mM ABC 1 mM NaCl	+1.5% <i>m</i> -NBA	+2.5% sulfolane	Calculated mass
A	79,714 ± 4	79,882 ± 21	79,944 ± 12	79,764 ± 5	79,700 Da
B	79,848 ± 10			79,910 ± 15	79,846 Da
C	80,372 ± 7	80,561	80,675 ± 21	80,425 ± 10	80,356 Da
D	80,505 ± 12			80,567 ± 20	80,502 Da
Average # Na adducts					
	10 mM ABC	10 mM ABC 1 mM NaCl	+1.5% <i>m</i> -NBA	+2.5% sulfolane	
A	0.6 ± 0.2	8.3 ± 1.0	11.1 ± 0.6	2.9 ± 0.2	
B	0.1 ± 0.5			2.9 ± 0.7	
C	0.7 ± 0.3	9.3	14.5 ± 1.0	3.1 ± 0.5	
D	0.1 ± 0.6			3.0 ± 0.9	

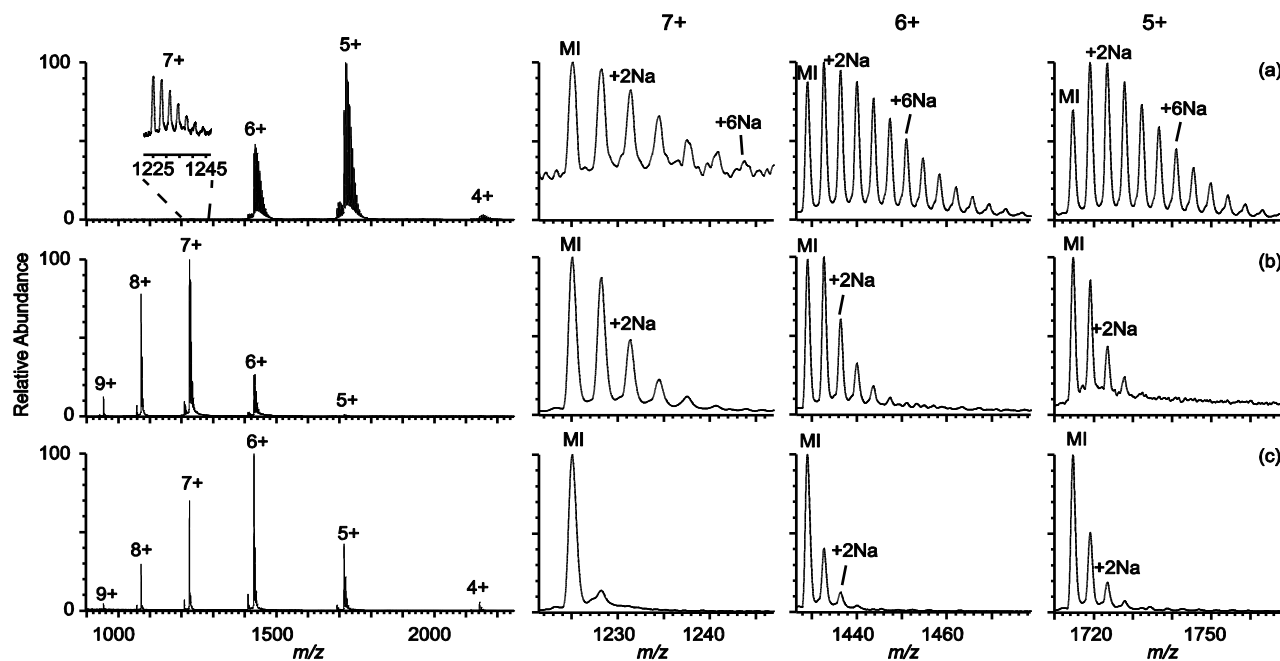


Figure 1. Mass spectra of ubiquitin (5 μ M) formed by nESI from aqueous solutions containing 10 mM ammonium bicarbonate and 1 mM NaCl (a) with no supercharging reagent, (b) with 1.5% *m*-NBA, and (c) with 2.5% sulfolane. Expansions showing adduction of sodium ions to the 5-7+ molecular ions are shown on the right; MI indicates the protonated molecular ion, $(M+nH)^{n+}$.

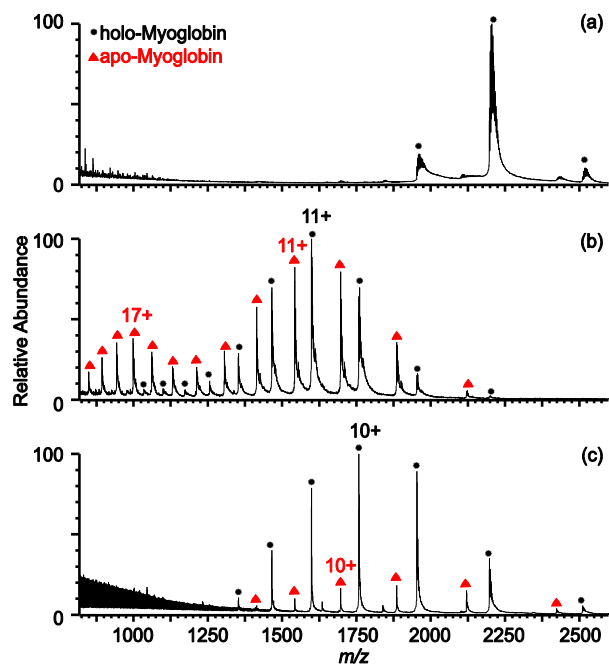


Figure 2. Mass spectra of myoglobin (5 μ M) formed by nESI from aqueous solutions containing 10 mM aqueous ammonium bicarbonate and 1 mM NaCl (a) with no supercharging reagent, (b) with 1.5% *m*-NBA, and (c) with 2.5% sulfolane.

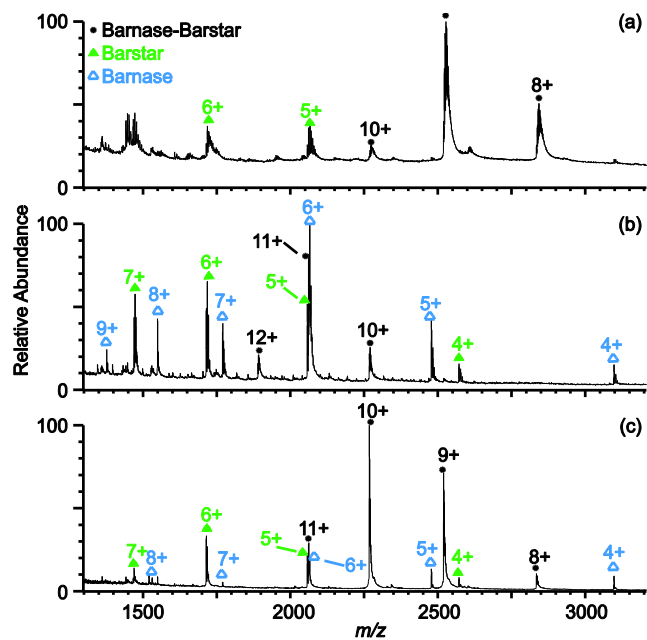


Figure 3. Mass spectra of barnase-barstar (5 μ M) with excess barstar formed by nESI from aqueous solutions containing 10 mM ammonium bicarbonate and 1 mM NaCl (a) with no supercharging reagent, (b) with 1.5% *m*-NBA, and (c) with 2.5% sulfolane.

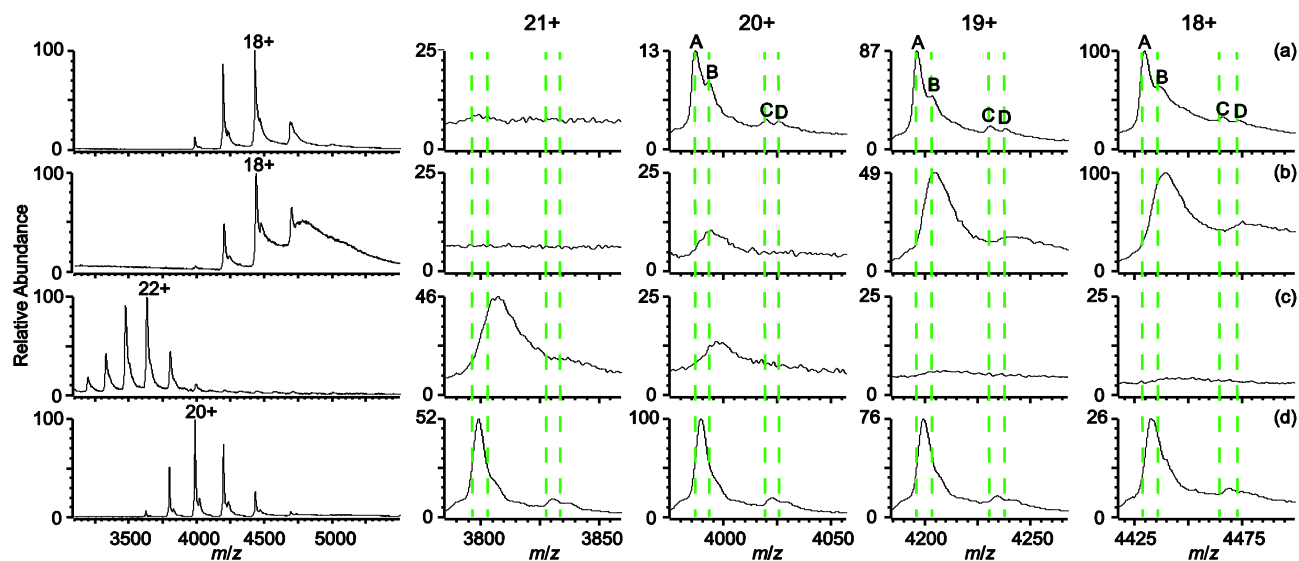


Figure 4. Mass spectra of human holo-transferrin (79.7 kDa) formed by nESI from aqueous solutions containing 10 mM ammonium bicarbonate with (a) no additional salt added, (b) 1 mM NaCl, (c) 1 mM NaCl with 1.5% *m*-NBA, and (d) 1 mM NaCl with 2.5% sulfolane. Expansions of the 18-21+ charge states are shown to the right. Dashed lines indicate the calculated average m/z for each glycoform without adducts.

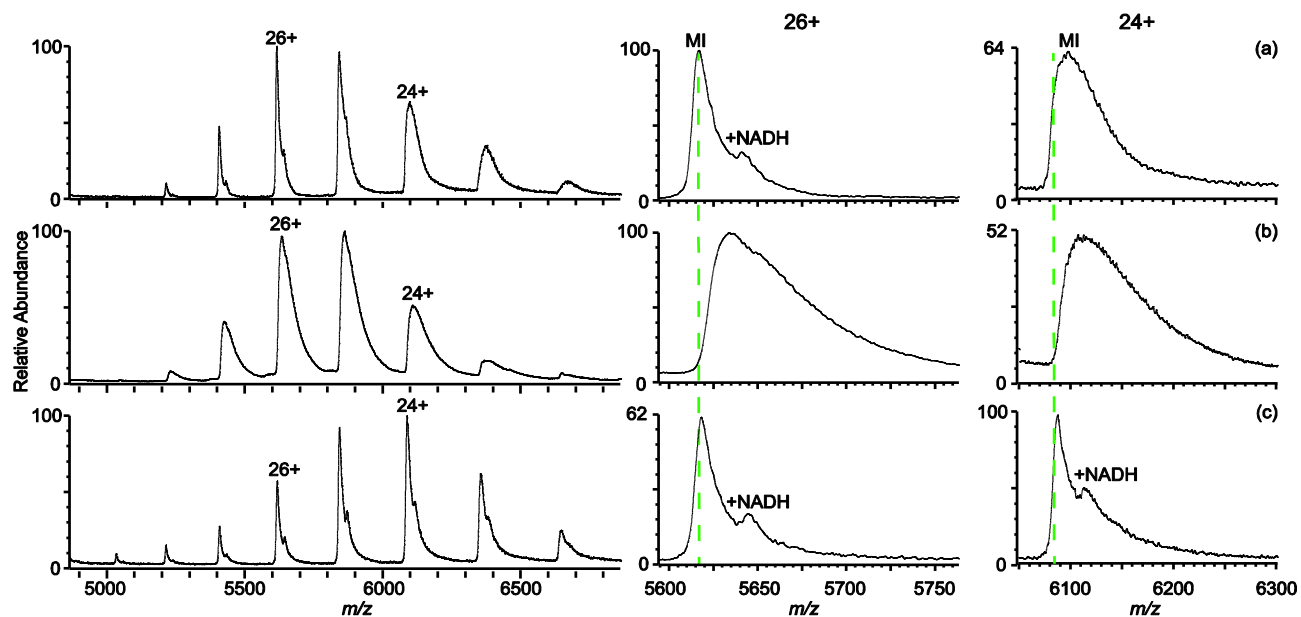


Figure 5. Mass spectra of rabbit LDH tetramer (146 kDa) formed by nESI from aqueous solutions containing 10 mM ammonium bicarbonate with (a) no additional salt added, (b) 5 mM NaCl, and (c) 5 mM NaCl with 2.5% sulfolane. Expansions of the 26+ and 24+ charge states are shown to the right. Dashed lines indicate the calculated average m/z of the tetramer without adducts.

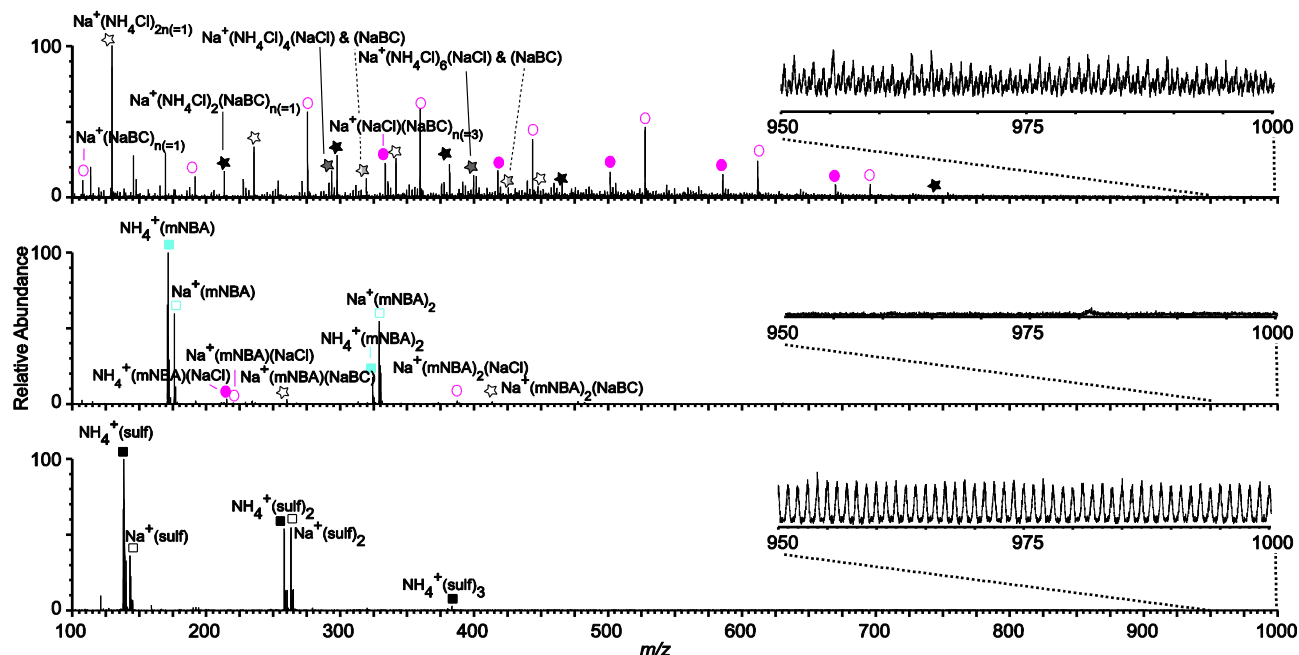


Figure 6. Mass spectra of barstar (5 μ M) formed by nESI from aqueous solutions containing 10 mM ammonium bicarbonate and 1 mM NaCl (a) with no supercharging reagent, (b) with 1.5% *m*-NBA, and (c) with 2.5% sulfolane. The low m/z region of the spectra are expanded. Spectra are normalized to the most abundant ion, but insets are on the same absolute scale for comparison.

Table of Contents Entry

Low concentrations of supercharging reagents *m*-NBA (1.5%) and sulfolane (2.5%) effectively desalt protein ions produced by electrospray ionization from aqueous solutions, improving mass measuring accuracy for large proteins.

