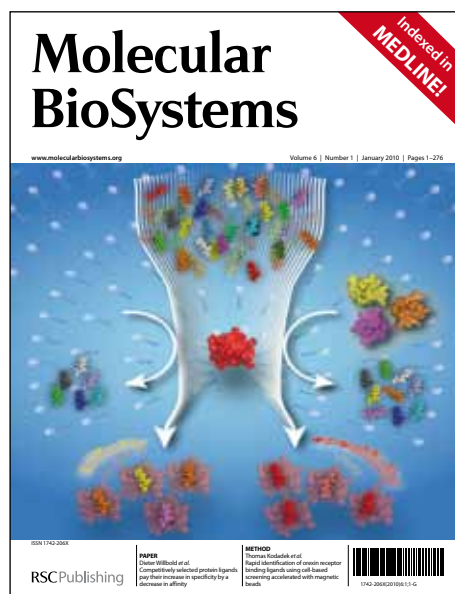


Molecular Biosystems

Accepted Manuscript



This is an *Accepted Manuscript*, which has been through the RSC Publishing peer review process and has been accepted for publication.

Accepted Manuscripts are published online shortly after acceptance, which is prior to technical editing, formatting and proof reading. This free service from RSC Publishing allows authors to make their results available to the community, in citable form, before publication of the edited article. This *Accepted Manuscript* will be replaced by the edited and formatted *Advance Article* as soon as this is available.

To cite this manuscript please use its permanent Digital Object Identifier (DOI®), which is identical for all formats of publication.

More information about *Accepted Manuscripts* can be found in the [Information for Authors](#).

Please note that technical editing may introduce minor changes to the text and/or graphics contained in the manuscript submitted by the author(s) which may alter content, and that the standard [Terms & Conditions](#) and the [ethical guidelines](#) that apply to the journal are still applicable. In no event shall the RSC be held responsible for any errors or omissions in these *Accepted Manuscript* manuscripts or any consequences arising from the use of any information contained in them.

Cite this: DOI: 10.1039/c0xx00000x

www.rsc.org/xxxxxx

ARTICLE TYPE

E88, a new cyclic-di-GMP class I Riboswitch aptamer from *Clostridium tetani* has a similar fold to the prototypical class I riboswitch, Vc2, but differentially binds to c-di-GMP analogs

Yiling Luo, Bin Chen, Jie Zhou, Herman O. Sintim*, T. Kwaku Dayie*

Received (in XXX, XXX) Xth XXXXXXXXX 20XX, Accepted Xth XXXXXXXXX 20XX
 DOI: 10.1039/b000000x

C-di-GMP has emerged as a ubiquitous second messenger, which regulates the transition between sessile and motile lifestyles and virulence factor expression in many pathogenic bacteria using both RNA riboswitch and protein effectors. We recently showed that two additional class I c-di-GMP riboswitch aptamers (Ct-E88 and Cb-17B) bound c-di-GMP with nanomolar affinity, and that Ct-E88 RNA bound 2'-F-c-di-GMP 422 times less tightly than class I Vc2 RNA. Based on sequence comparison, it was concluded that the global folds of Ct-E88 and Vc2 RNAs were similar and that differences in ligand binding were probably due to differences in binding site architectures. Herein, we utilized EMSA, aptamer sensing SPINACH modules, SAXS and 1D NMR titration to study the conformational transitions of Ct-E88. We conclude that whereas the global folds of the bound states of Vc2 and Ct-E88 RNAs are similar, the unbound states are different and this could explain differences in ligand affinities between these class I c-di-GMP riboswitches.

Introduction

Until recently, the cytoplasmic bacterial second messenger Bis-(3'-5')-cyclic guanosine monophosphate (c-di-GMP) was thought to regulate various physiological processes such as motility reduction, expression of acute virulence genes, formation of adhesins and exopolysaccharides, and cell cycle progression using protein effectors.¹⁻⁹ High levels of c-di-GMP in the cell are associated with biofilm formation and inhibition of virulent gene expression. Conversely, low levels of c-di-GMP allow bacteria to express virulence factors conducive for motile lifestyle and survival. In response to various extracellular signals, diguanylate cyclases (DGCs) containing Gly-Gly-Asp-Glu-Phe (GGDEF) domains synthesize c-di-GMP from two GTP molecules, and phosphodiesterases (PDEs) containing either Glu-Ala-Leu (EAL) or His-Asp-Gly-Tyrosine-Proline (HDGYP) domains cleave c-di-GMP eventually into two molecules of GMP. Various effector proteins, discovered as potential regulators of c-di-GMP, could not fully explain how the second messenger controls transcription and translation of specific mRNA transcripts important for global cellular regulation.^{5, 7-15} Breaker and co-workers, using computational searches, expanded this effector family to two classes of riboswitch RNAs found in the 5'-untranslated regions of mRNAs associated with DGC and PDE genes involved in c-di-GMP metabolism and regulation.^{16, 17} Appropriately, these riboswitch RNAs fold into an aptamer domain that recognizes metabolites, and a conformational change in the aptamer domain is then relayed to downstream elements that control gene expression at the level of transcription, splicing, or translation. Approximately 500 examples of class I and 45 examples of class

II riboswitches have thus far been computationally identified in a variety of bacteria including many pathogens such as *Bacillus anthracis*, *Clostridium tetani*, *Clostridium difficile*, and *Vibrio cholera*.^{16, 17}

Out of all these computationally predicted riboswitch families, the 3D structure was solved and the nature of the interaction with c-di-GMP experimentally validated for only one riboswitch RNA from each class: c-di-GMP-I riboswitch associated with the *tfoX* gene of *Vibrio cholera*, hereafter referred to as Vc2 RNA-I riboswitch¹⁷; and class II riboswitch aptamer from *Clostridium acetobutylicum*, hereafter referred to as CdA RNA-II riboswitch.¹⁶ Both Vc2 RNA-I and CdA RNA-II riboswitches bind c-di-GMP with dissociation constants ranging from 200 pM to 2 nM.¹⁶ These affinities are substantially tighter than those of known protein receptors.^{18, 19}

In addition to these binding studies, two crystallographic structures of the aptamer domain of the Vc2 RNA-I riboswitch in complex with c-di-GMP were solved independently by two groups, and the structures revealed an h- or a y-shaped overall architecture with a ligand recognition pocket framed by three paired helical fragments (P1, P2, and P3) held together by interhelical linker regions (J1/2, J2/3, and J3/1).^{20, 21} Here we use the notation and nomenclature suggested by Smith et al from a well-defined X-ray structure with higher resolution than the other one.²⁰

Building on the insights from the structural and binding studies, the research groups of D'Amare and Rueda used single molecule fluorescence resonance energy transfer (smFRET) experiments and SAXS data to show that, in the absence of c-di-GMP, the Vc2-I RNA does not adopt a side-by-side docking.

Rather a key GNRA (G=guanosine, N=any nucleotide, R=purine, and A=adenosine) tetraloop (GT)-tetraloop receptor (TR) interaction and a long-range C44-G83 base pairing become unglued in the presence of physiological Mg^{2+} , and only adopt a bound conformation in the presence of the ligand.²²

Despite these extensive studies on the Vc2-I RNA, very little is known about other members of the class I riboswitch RNAs. Using equilibrium microdialysis and gel shift assays, we recently showed that a riboswitch from *Clostridium tetani* E88 (hereafter Ct-E88 RNA) and Vc2-I RNAs bound c-di-GMP with the same nanomolar affinity but were both unable to bind a c-di-GMP analog with a 2'-methoxy group (2'-OMe-c-di-GMP), suggesting it belonged to the same class I family as Vc2 (Fig. 1).²³ Nonetheless, Vc2-I RNA bound a c-di-GMP analog with a 2'-fluoro group (2'-F-c-di-GMP) with nanomolar affinity, whereas Ct-E88 bound this analog with ~422 fold loss in affinity.²³

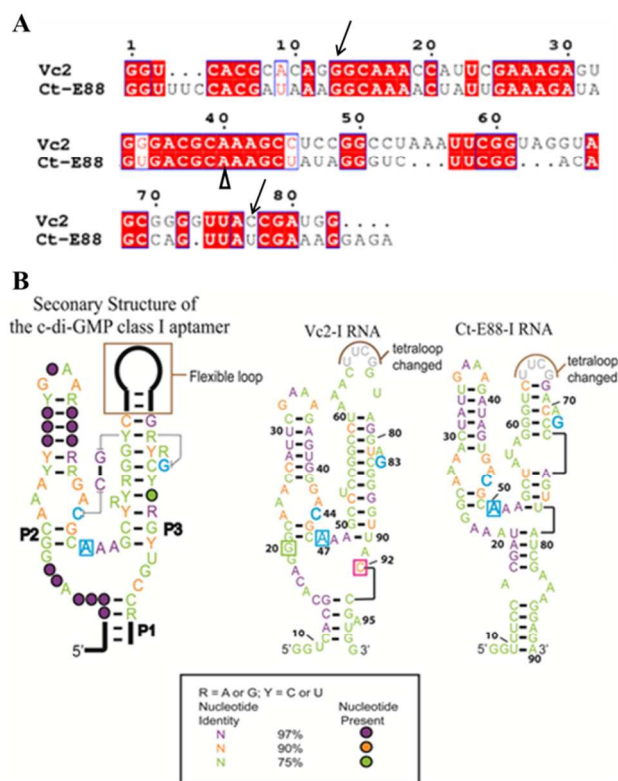


Fig. 1 (A) Alignment of predicted c-di-GMP riboswitch sequences of Vc2-I and Ct-E88. Alignment was done using Clustal W²⁴ and ESPr²⁵. The nucleotides indicated by unfilled arrow below are correlated to the nucleotides in blue in (B) and the nucleotides indicated by arrow are equivalent to G20 and C92 in Vc2-I in (B). (B) Predicted secondary structures of the selected c-di-GMP riboswitch aptamers based on a structure model of the c-di-GMP class I aptamer.²⁰ Cytidine within the P2 stem (in blue) and guanine within the P3 stem (in blue) are expected to form a long range inter-helical Watson-Crick base pairing in the ligand bound structure and adenosine in blue is expected to intercalate between two bases of c-di-GMP in the bound form. In Vc2-I structure, cytidine and guanosine indicated in the boxes are the two important nucleotides that base pair with the two bases of c-di-GMP.

From the alignment (Fig 1A), Vc2-I and Ct-E88 RNAs share many conserved nucleotides. While such high conservation is suggestive of similar global architecture, this has not been experimentally verified. Herein, we use various techniques,

including native gel electrophoretic mobility shift assay, SPINACH detection, small-angle X-ray scattering (SAXS) and solution NMR analysis to delineate the nature of the conformational changes that take place during second messenger c-di-GMP induced folding of this newly validated Ct-E88 RNA.

Materials and Methods

RNA preparation and purification

The c-di-GMP riboswitch RNAs used in this study are the UUCG-tetraloop modifications of the P3 helix. A pUC57 plasmid containing each target sequence, including phage T7 RNA polymerase promoter sequence, was constructed by GenScript [Piscataway, NJ] and RNAs were transcribed and purified using methods established in our group.^{23, 26, 27}

Electrophoretic mobility shift assay (EMSA)

To explore the conformational change between the free and bound forms of Ct-E88 RNA, EMSA was performed. 10 μ M of RNA was folded by heating to 70°C for 3 min and slow cooled in folding buffer (20 mM KCl, 6 mM $MgCl_2$, and 10 mM sodium cacodylate, pH 6.8) in the presence of twice the ligand concentration. The reaction mixtures were incubated overnight at 25°C, and the samples resolved on a 10% native polyacrylamide gel with running buffer (100 mM Tris/HEPES pH7.5, 0.1 mM EDTA) supplemented with 1 mM $MgCl_2$. The gels were stained with ethidium bromide and images were scanned using STORM phosphorImager (GE Healthcare).

Preparation of RNA sensors

To investigate how the P1 stem transduces signal into adjacent structural elements, we created a c-di-GMP sensor using stem-loop 2 of the spinach RNA replaced with the putative P1 stem of Ct-E88 as reported recently for Vc2-I RNA.^{28, 29} The c-di-GMP-I aptamer was fused to the spinach module by a transducer module (Fig. 2), and secondary structure prediction was performed using Mfold.³⁰ The following conditions were used to test the sensitivity of the fluorescent c-di-GMP riboswitch sensor to sequence variation in P1 stem of Ct-E88: [c-di-GMP] = 10 μ M, [RNA] = 1 μ M, [DFHBI] = 10 μ M (0.05 % DMSO); and 100 mM HEPES (pH 6.8) buffer containing 100 mM NaCl, 100 mM KCl, 6 mM $MgCl_2$. RNA in the absence of $MgCl_2$ was heated to 70°C and kept at 70°C for 3 min. Then $MgCl_2$ and c-di-GMP were added and cooled to room temperature (24°C) over ~10 min. The mixture was then left at 24°C for 12 h. DFHBI was subsequently added and fluorescence monitored (Ex. 469 nm, Em. 501 nm) at 24°C until fluorescence plateaued after 6 min.

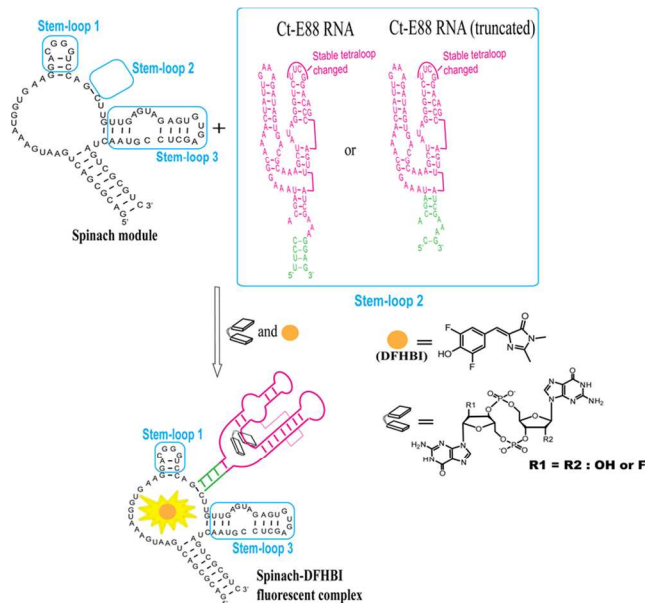


Fig. 2 A modular aptamer strategy to detect c-di-GMP, using a fusion of c-di-GMP aptamer as a recognition module and DFHBI aptamer as a sensing module. Transducer module is shown in green.

Small angle X-ray scattering experiments and data analysis

To explore Ct-E88 RNA global conformational change as a function of MgCl_2 and metabolites, small angle X-ray scattering (SAXS) and wide angle X-ray scattering (WAXS) data were collected at beam line 12-ID of the Advanced Photon Source (APS), Argonne National Laboratory. The wavelength, λ , of the X-ray radiation was set to 1.033 Å. The detailed protocols of SAXS measurement was described previously.^{26, 31} In brief, the Ct-E88 RNA was dissolved in buffer A (100 mM HEPES and 100 mM NaCl, pH 8.0). The sample was heated at 90 °C for 2 min followed by cooling at room temperature for 10 min. MgCl_2 , or MgCl_2 and c-di-GMP were added to buffer A to prepare additional RNA buffer conditions: buffer B (Buffer A and 3 mM MgCl_2), and buffer C (Buffer A, 3 mM MgCl_2 and saturating amount of c-di-GMP [ligand/RNA \approx 2]). Three concentrations of RNA samples (0.5, 1.0 and 3.0 mg/mL) were prepared for each of the three buffer conditions, making a total of 9 sample conditions for the SAXS/WAXS data collection.

The q-range used for data analysis was between 0.002 and 0.300 Å⁻¹ and the quality of the SAXS data was evaluated by the linearity of Guinier plot using IGOR PRO (WaveMetrics) software. GNOM software was also used to confirm the radius of gyration (R_g) and to analyze pair distance distribution function (PDDF) as described earlier.^{26, 32}

Low resolution *ab initio* model reconstructions of Ct-E88 aptamer

The low resolution *ab initio* model reconstructions of Ct-E88 aptamer RNA under the three solution conditions described above were obtained by ATSAS 2.4 suite of programs including GNOM,³² DAMMIN³³ and DAMAVER³⁴ using methods established in our group.²⁶

NMR sample preparation and NMR experiments of Ct-E88 RNA

To further corroborate the global changes in structure, simple ¹H NMR experiments were performed as described earlier^{26, 27, 35} using an NMR sample with RNA concentration of \sim 1 mM and c-di-GMP concentration of \sim 2 mM. NMR experiments were performed on a Bruker Avance 600 MHz spectrometer equipped with actively shielded z-axis gradient triple resonance probe. NMR spectra were recorded at a various temperatures using the WATERGATE module for water suppression.³⁶ All spectra were processed and analyzed using Bruker's TOPSPIN 2.1.

RESULTS AND DISCUSSION

Native gel mobility shift assay

Native PAGE is a useful tool to ascertain RNA folding and conformational changes in response to the presence of metal ions or specific metabolites that trigger the RNA's conformational changes. If alternative states of the RNA are present after interacting with the metal ions or ligands, then bands with different migration rates can be observed provided the exchange between the different states is slow relative to the migration rate of the RNA through the gel. Otherwise, a single band of average mobility is observed.^{26, 37} From our EMSA results, both Vc2-I and Ct-E88 RNAs formed a homogenous band and both RNAs migrate faster on the native PAGE in the presence of c-di-GMP and Mg^{2+} ion than in their absence (Fig. 3). Thus both RNAs likely adopt a more compact conformation in the presence of the ligand. Intriguingly, 2'-H-c-di-GMP did not cause any band shift for either Vc2-I or Ct-E88 RNA, whereas 2'-F-c-di-GMP induced a band shift for Vc2-I but not Ct-E88 (Fig. 3). These different mobilities on the native gel imply Vc2-I and Ct-E88 likely undergo different levels of conformational changes with 2'-F-c-di-GMP. These observations are consistent with the results of equilibrium microdialysis and K_d measurement on Vc2-I and Ct-E88 RNA in the presence of the ligand and several different analogs.²³ Thus the native gel shift assay provides a hint that Ct-E88 RNA most likely undergoes large conformational changes in the presence of the second messenger but not in the presence of the c-di-GMP analogs modified at the 2'-position.

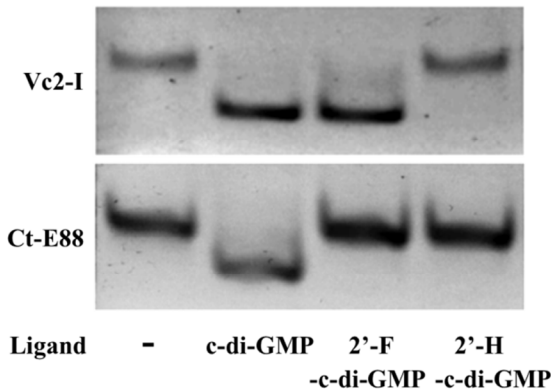


Fig. 3 Electrophoretic mobility shift assay of Vc2-I and Ct-E88 RNA in the presence of the ligand c-di-GMP and two different ligand analogs, including 2'-F-c-di-GMP and 2'-H-c-di-GMP.

SPINACH

We tested the hypothesis that the stability of the P1 stem is enhanced by ligand binding to the P1 stem attached via a transducer element to a spinach recognition module. As we and others have shown recently, the formation of transducer module stem 2 is critical for the ability of the spinach module to activate the fluorescence of DFHBI.^{29, 38} Therefore transducer elements that are stabilized in the presence of small molecule binding would allosterically regulate the spinach RNA structure. By linking the aptamer domain of the either Vc2-I or Ct-E88 RNA to the spinach domain via a transducer linker, c-di-GMP analog binding to the aptamer is expected to fold up the shared critical stem required for the binding of DFHBI to the spinach RNA, thus leading to fluorescence (Fig. 2).

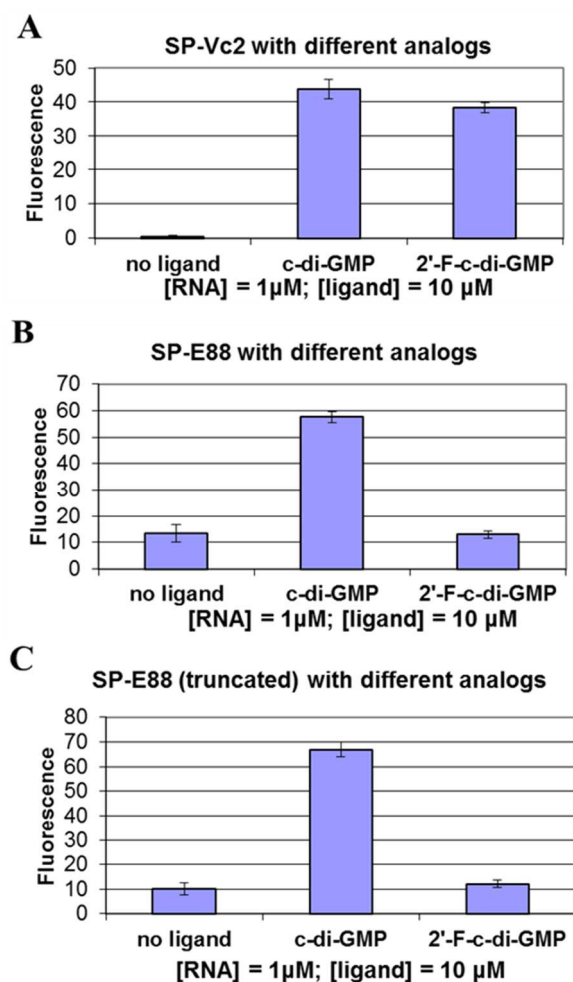


Fig. 4 (A) Differential binding of c-di-GMP and 2'-F-c-di-GMP to fluorescent spinach-Vc2-I. (B) Differential binding of c-di-GMP and 2'-F-c-di-GMP to fluorescent spinach-Ct-E88. (C) Differential binding of c-di-GMP and 2'-F-c-di-GMP to fluorescent spinach-Ct-E88 (truncated).

Consistent with our native gel shift data and microdialysis assay, Vc2-I binds both c-di-GMP and 2'-F-c-di-GMP to allosterically regulate the spinach RNA structure leading to enhanced fluorescence (Fig. 4).²³ However, Ct-E88 RNA is able to use only c-di-GMP and not 2'-F-c-di-GMP to allosterically regulate the spinach RNA structure inducing increased fluorescence (Fig. 4). Intriguingly, truncation of P1 stem (by

removing residues 10-13 and 87-90 that appear pre-folded in the absence of magnesium ions and metabolite) does not impair the ability of Ct-E88 to transduce fluorescence enhancement (Fig. 4).

Thus residues 10-13 and 87-90 are dispensable for Ct-E88 riboswitch function, and further the P1 stem might actually start with the closing base pair C14-G86.

Following the conformational changes of Ct-E88 aptamer induced by c-di-GMP and Mg^{2+} ion with SAXS

The results from native gel shift assay and microdialysis suggest that both Vc2-I and Ct-E88 RNAs bind c-di-GMP tightly and that Vc2-I but not Ct-E88 is able to recognize a ligand analog with a 2'-fluoro group (2'-F-c-di-GMP) with high affinity. Thus it is not clear if Vc2-I and Ct-E88 RNAs would share similar global architecture. We therefore tested the nature of the structural response elicited by Mg^{2+} and c-di-GMP using SAXS, which would provide more information on the global shape of the RNA in the free or bound forms. Solution scattering profiles were collected on Ct-E88 aptamer in the absence or presence of Mg^{2+} and c-di-GMP. The three overlaid scattering curves exhibited significant differences, suggesting the existence of at least three possible conformational states along the RNA-folding pathway (U, I and B states) (Fig. 5A). Fig. 5B shows the low angle scattering data extrapolated to zero concentration with straight lines highlighted by the black squares as fitting regions. Radii of gyration, R_g , were obtained from a Guinier analysis from these regions using the linear, first-order Guinier approximation: $\ln[I(q)] \cong \ln[I(0)] - R_g^2 q^2/3$. The data indicate that R_g of Ct-E88 aptamer changes dramatically only in the presence of both Mg^{2+} and c-di-GMP (Table 1). In the absence of Mg^{2+} and c-di-GMP (U state), Ct-E88 aptamer RNA adopts an extended conformation with an R_g of 29.5 Å. In the presence of 3 mM Mg^{2+} (I state), R_g decreases slightly to 28.9 Å well within the error limit. In the presence of both Mg^{2+} and c-di-GMP (B state), the RNA is significantly compacted to an R_g of 24.3 Å. To further highlight the degree of RNA compaction, the SAXS data is transformed into the Kratky representation (Fig. 5C), where the scattering intensity is weighted by the square of the momentum transfer (q). The scattering curve of RNA in the U state exhibits a flattened plateau with scattering intensity falling slightly at large angle. Although it is different from an upward rising scattering intensity representative of a completely denatured conformation according to Porod's law, this U state is consistent with a partially 'folded state' with an extended conformation.³⁹ Compared to the U and I states, the B state has a pronounced concave peak indicative of a folded structure. To gain further insight into the shape and maximum intramolecular distance of the particles, the pair distance distribution function (PDDF or P(r)) plots were compared (Fig. 5D).^{40, 41} The RNA in U and I states (Table 1) has relative larger maximum intramolecular distance D_{max} than the c-di-GMP bound state of the RNA (B). Thus the RNA undergoes a marked ligand-induced compaction only in the presence of both Mg^{2+} and c-di-GMP. A similar study for Vc2 indicate

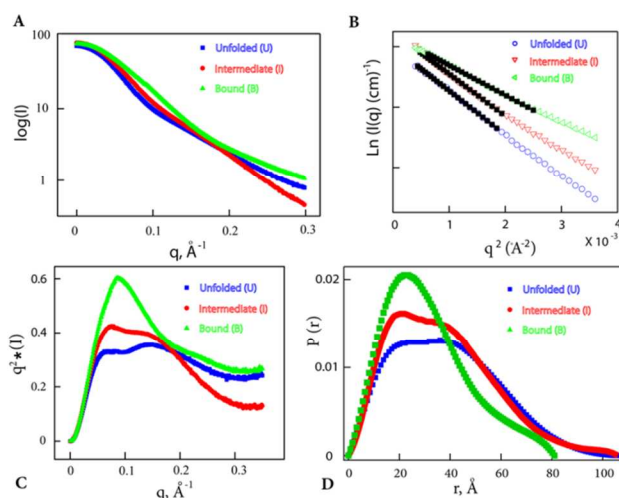


Fig. 5 SAXS analysis of Ct-E88 RNA under three different conditions. (A) Comparison of experimental scattering profiles of Ct-E88 RNA. (B) Guinier approximation analyses of the low q data and Guinier fits (black solid squares) of the RNA. The ranges of the solid squares indicate the fitting range. (C) Comparison of the SAXS data in Kratky representation for Ct-E88 RNA under the three states. (D) Comparison of $P(r)$ plot determined from experiments using GNOM for the three different conditions.

Table 1 Structural properties of Ct-E88 RNA under different conditions

States	Conditions	R_g (Å) ^a	D_{max} (Å) ^b	NSD ^c
Unfolded (U)	Buffer	29.5 ± 0.2	106	0.95 ± 0.02
Intermediate (I)	Buffer + 3 mM Mg^{2+}	28.9 ± 0.1	106	0.74 ± 0.04
Bound (B)	Buffer + Mg^{2+} + c-di-GMP	24.3 ± 0.1	81	0.60 ± 0.03

Parameters and quality indicators derived from the scattering data for the Ct-E88 aptamer under different conditions.

^a The radius of gyration (R_g) values were obtained from Guinier analysis of the low angle scattering data.

^b The maximum intramolecular distances (D_{max}) were obtained using

GNOM program

^c The normalized spatial discrepancy (NSD) values of three low resolution reconstruction models were generated from DAMAVER program.

Low resolution *ab initio* modeling of Ct-E88 RNA

To gain further insight into the nature of the Mg^{2+} and c-di-GMP induced conformational change, we constructed 20 independent low resolution *ab initio* models of Ct-E88 RNA based on the SAXS data using the program DAMMIN.³³ The program package DAMAVER³⁴ was used to average the resulting 20 models for each sample condition. The final low-resolution reconstruction obtained was the average molecular envelope of the ensemble (Fig. 6). The normalized spatial discrepancy (NSD), which provides a quantitative estimate of similarity between models, was also computed. Identical models give NSD values at zero, similar models give NSD values around one and models with different shapes give NSD values greater than one (Table 1).⁴² Here the average NSDs for the three reconstructions were 0.95, 0.74 and 0.60 (each NSD was <1) (Table 1), indicating good convergences in both individual DAMMIN fits and overall bead model ensembles for Ct-E88 RNA. B state had the lowest

average NSD value, consistent with the most rigid and folded state.

The low resolution models corresponding to the three states of Ct-E88 RNA indicate that the unfolded (in the absence of both Mg^{2+} ion and metabolite) and intermediate (in low Mg^{2+} ion and the absence of metabolite) states both have the same D_{max} of 106 Å, whereas the bound state (in the presence of both Mg^{2+} ion and metabolite) has a much smaller D_{max} of 81 Å. Thus the shape of the envelope of the bound state is distinctly different from the other two states. Given the obvious low resolution limitation of SAXS, detailed interpretation of the envelope for the states can be ambiguous, and information of the location and orientation of helices is not available. Nonetheless, both unfolded and intermediate states exhibit two prominent arms absent in the bound state, suggestive of lack of side-by-side packing of helices P2 and P3, or lack of complete folding of helix P1, or both.

However at this low resolution, the nature of this unbound and intermediate state is still unclear from the SAXS data: is helix P1 partially unfolded, and how are helices P2 and P3 packed? For these and other structural questions detailed high resolution multidimensional NMR spectroscopy will be better suited as we recently showed for the SAM-II riboswitch²⁶ and will be the focus of future studies by our group. However to gain insight into the global conformational changes that are revealed by imino proton NMR we present data for three conditions: free, Mg^{2+} ion-bound, and Mg^{2+} ion and metabolite-bound Ct-E88 aptamer RNA (see below).²⁶

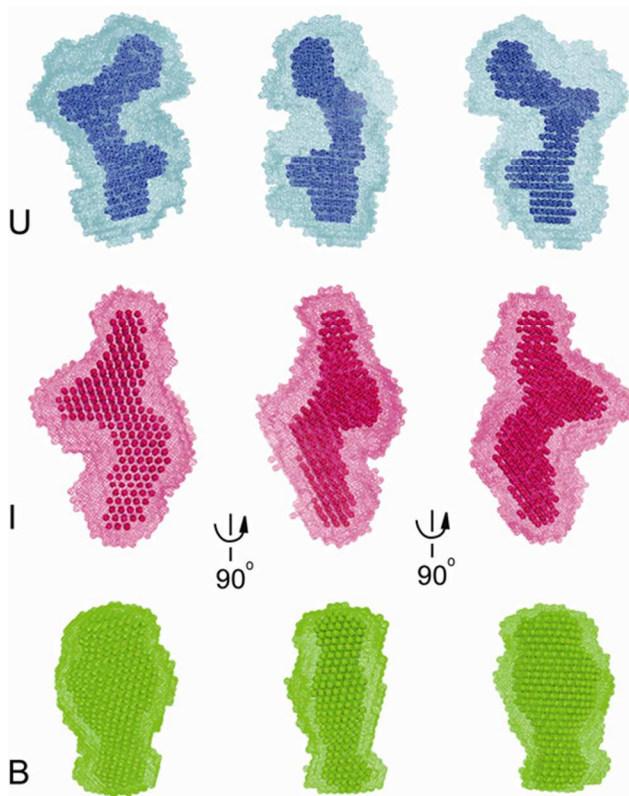


Fig. 6 Low-resolution *ab initio* models of Ct-E88 aptamer under three different folding states (U state in blue, I state in red and B state in green). Three different views are shown for the final consensus models (molecular envelope) as mesh representatives with 'filtered' models aligned inside.

NMR study of Ct-E88 RNA with c-di-GMP

NMR chemical shift perturbation experiments are ideally suited for probing characteristic imino proton chemical shifts found in both canonical and non-canonical Watson-Crick configurations as well as monitoring the formation and breakage of these base pairs in RNAs to define conformational change upon interacting with metabolites or metal ions. To corroborate the SAXS data analysis that indicated that the magnesium ion bound form of Ct-E88 aptamer RNA has conformation similar to the free form, NMR titration experiments were performed to determine whether the Mg^{2+} or the metabolite or both induced structural rearrangements with resultant changes of secondary structural elements.²⁶

We first tested the effect of temperature on the NMR experiments and found the optimal temperature to be ~298 K (data not shown). Titration of the riboswitch with Mg^{2+} ion in the absence of metabolite reveals no chemical shift perturbation of the existing imino peaks and no appearance of any strong new signals, indicating that addition of Mg^{2+} ion does not induce any base pairing interactions within the imino region (Fig. 7). However the titration of Ct-E88 RNA with c-di-GMP in the presence of Mg^{2+} ion revealed significant chemical shift perturbations of existing imino peaks and appearance of some strong new peaks marked by arrows (Fig. 7), where the peaks in the region of 12-15 ppm are usually indicative of canonical Watson-Crick base pairs (A:U and G:C base pairings) and peaks in the region of 10-12 ppm are often indicative of noncanonical base pairs (G:U, G:A and G:G base pairings). These results indicate that addition of the ligand indeed triggers changes of secondary structure and folding of the RNA.

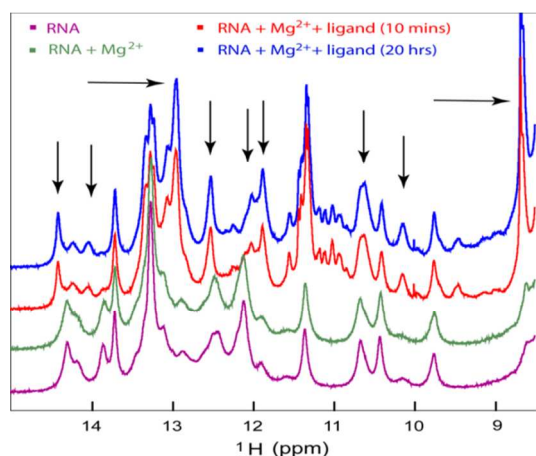


Fig. 7 1D NMR titration study of the RNA with the ligand. The imino region of 1D 1H NMR spectra of Ct-E88 RNA, with 3 mM Mg^{2+} or with both Mg^{2+} ion and saturating amount of c-di-GMP.

Conclusions

We recently demonstrated that c-di-GMP analogs bind differently to the known class I Vc2 and our new experimentally verified Ct-E88 RNA.²³ We now show that even though both Vc2-I and Ct-E88 RNA attain compact global folds in the

presence of both Mg^{2+} ion and c-di-GMP, they do so differently. For example previous work on Vc2-I indicated modest compaction in the presence of physiologic (2.5 mM) Mg^{2+} (from 32 Å to 28.5 Å) with further compaction to 23.9 Å in the presence of c-di-GMP. Our results indicate that Ct-E88, unlike Vc2, undergoes negligible compaction in the presence of physiologic (2.5 mM) Mg^{2+} . Furthermore SAXS and NMR all further indicated that c-di-GMP ligand was more critical than Mg^{2+} for inducing Ct-E88 RNA folding and secondary structure formation. In addition, the fluorescence spinach assay indicated that the last three base pairs in helix P1 of Ct-E88 RNA are not as important for binding affinity and signal transduction as observed for Vc2. In the future, very high resolution structural analysis would be necessary to fully elucidate this intriguing difference between these class I riboswitch RNAs Ct-E88 and Vc2. Insights from understanding these differences might form the basis for the design of small molecules that selectively target different bacteria that harbor different class I c-di-GMP riboswitches in a polymicrobial system, and also enable the design of riboswitches as macromolecular logic gate switches with potential applications in biotechnology.

Acknowledgements

We thank Dr. Xiaobing Zuo at Argonne National Laboratory for help with collection of the scattering data. Funding for this work was provided by the National Science Foundation (CHE1307218 to HOS), (CHE1213668 to TKD and HOS), Maryland Biotechnology Award (TKD), American Heart Association (11PRE7890040 fellowship to JZ), UMD Dean's graduate fellowship (JZ), Camille Dreyfus Foundation (HOS) and Jenny T. Sih Endowed Memorial Scholarship (YL).

Notes and references

Department of Chemistry and Biochemistry, University of Maryland, College Park, MD 20742
davie@umd.edu; hsintim@umd.edu

† Electronic Supplementary Information (ESI) available: [details of any supplementary information available should be included here]. See DOI: 10.1039/b000000x/

‡ Footnotes should appear here. These might include comments relevant to but not central to the matter under discussion, limited experimental and spectral data, and crystallographic data.

1 A. Name, B. Name and C. Name, *Journal Title*, 2000, **35**, 3523; A. Name, B. Name and C. Name, *Journal Title*, 2000, **35**, 3523.

References

- D. Kalia, G. Merey, S. Nakayama, Y. Zheng, J. Zhou, Y. Luo, M. Guo, B. T. Roembke and H. O. Sintim, *Chem Soc Rev*, 2013, **42**, 305-341.
- T. Petters, X. Zhang, J. Nesper, A. Treuner-Lange, N. Gomez-Santos, M. Hoppert, U. Jenal and L. Sogaard-Andersen, *Mol Microbiol*, 2012, **84**, 147-165.

3. J. R. Tuckerman, G. Gonzalez and M. A. Gilles-Gonzalez, *J Mol Biol*, 2011, **407**, 633-639.
4. S. Rakshe, M. Leff and A. M. Spormann, *Appl Environ Microbiol*, 2011, **77**, 2196-2198.
- 5 5. J. L. Leduc and G. P. Roberts, *J Bacteriol*, 2009, **191**, 7121-7122.
6. R. Hengge, *Nat Rev Microbiol*, 2009, **7**, 263-273.
7. A. Duerig, S. Abel, M. Folcher, M. Nicollier, T. Schwede, N. Amiot, B. Giese and U. Jenal, *Genes Dev*, 2009, **23**, 93-104.
8. J. W. Hickman and C. S. Harwood, *Mol Microbiol*, 2008, **69**, 376-389.
- 10 9. V. T. Lee, J. M. Matewish, J. L. Kessler, M. Hyodo, Y. Hayakawa and S. Lory, *Mol Microbiol*, 2007, **65**, 1474-1484.
10. D. Srivastava, R. C. Harris and C. M. Waters, *J Bacteriol*, 2011, **193**, 6331-6341.
- 15 11. P. V. Krasteva, J. C. Fong, N. J. Shikuma, S. Beyhan, M. V. Navarro, F. H. Yildiz and H. Sondermann, *Science*, 2010, **327**, 866-868.
12. P. D. Newell, R. D. Monds and G. A. O'Toole, *Proc Natl Acad Sci U S A*, 2009, **106**, 3461-3466.
13. J. T. Pratt, R. Tamayo, A. D. Tischler and A. Camilli, *J Biol Chem*, 2007, **282**, 12860-12870.
- 20 14. J. Benach, S. S. Swaminathan, R. Tamayo, S. K. Handelman, E. Folta-Stogniew, J. E. Ramos, F. Forouhar, H. Neely, J. Seetharaman, A. Camilli and J. F. Hunt, *EMBO J*, 2007, **26**, 5153-5166.
- 25 15. D. Amikam and M. Y. Galperin, *Bioinformatics*, 2006, **22**, 3-6.
16. E. R. Lee, J. L. Baker, Z. Weinberg, N. Sudarsan and R. R. Breaker, *Science*, 2010, **329**, 845-848.
17. N. Sudarsan, E. R. Lee, Z. Weinberg, R. H. Moy, J. N. Kim, K. H. Link and R. R. Breaker, *Science*, 2008, **321**, 411-413.
- 30 18. Y. Luo, J. Zhou, S. K. Watt, V. T. Lee, T. K. Dayie and H. O. Sintim, *Mol Biosyst*, 2012, **8**, 772-778.
19. P. Ross, R. Mayer, H. Weinhouse, D. Amikam, Y. Huggirat, M. Benziman, E. de Vroom, A. Fidder, P. de Paus, L. A. Slidregt and et al., *J Biol Chem*, 1990, **265**, 18933-18943.
- 35 20. K. D. Smith, S. V. Lipchok, T. D. Ames, J. Wang, R. R. Breaker and S. A. Strobel, *Nat Struct Mol Biol*, 2009, **16**, 1218-1223.
21. N. Kulshina, N. J. Baird and A. R. Ferre-D'Amare, *Nat Struct Mol Biol*, 2009, **16**, 1212-1217.
22. S. Wood, A. R. Ferre-D'Amare and D. Rueda, *ACS Chem Biol*, 2012, **7**, 920-927.
- 40 23. Y. Luo, J. Zhou, J. Wang, T. K. Dayie and H. O. Sintim, *Mol Biosyst*, 2013.
24. M. A. Larkin, G. Blackshields, N. P. Brown, R. Chenna, P. A. McGettigan, H. McWilliam, F. Valentin, I. M. Wallace, A. Wilm, R. Lopez, J. D. Thompson, T. J. Gibson and D. G. Higgins, *Bioinformatics*, 2007, **23**, 2947-2948.
- 45 25. P. Gouet, E. Courcelle, D. I. Stuart and F. Metoz, *Bioinformatics*, 1999, **15**, 305-308.
26. B. Chen, X. Zuo, Y. X. Wang and T. K. Dayie, *Nucleic Acids Res*, 2012, **40**, 3117-3130.
- 50 27. M. Seetharaman, N. V. Eldho, R. A. Padgett and K. T. Dayie, *RNA*, 2006, **12**, 235-247.
28. J. Zhou, D. A. Sayre, J. Wang, N. Pahadi and H. O. Sintim, *Molecules*, 2012, **17**, 13376-13389.
- 55 29. S. Nakayama, Y. Luo, J. Zhou, T. K. Dayie and H. O. Sintim, *Chem Commun (Camb)*, 2012, **48**, 9059-9061.
30. M. Zuker, *Nucleic Acids Res*, 2003, **31**, 3406-3415.
31. Y. X. Wang, X. Zuo, J. Wang, P. Yu and S. E. Butcher, *Methods*, 2010, **52**, 180-191.
- 60 32. D. I. Svergun, *Journal of Applied Crystallography*, 1992, **25**, 495-503.
33. D. I. Svergun, *Biophys J*, 1999, **76**, 2879-2886.
34. V. V. Volkov and D. I. Svergun, *Journal of Applied Crystallography*, 2003, **36**, 860-864.
- 65 35. K. T. Dayie, *J Biomol NMR*, 2005, **32**, 129-139.
36. M. Piotto, V. Saudek and V. Sklenar, *J Biomol NMR*, 1992, **2**, 661-665.
37. J. R. Cann, *Electrophoresis*, 1996, **17**, 1535-1536.
38. J. S. Paige, T. Nguyen-Duc, W. Song and S. R. Jaffrey, *Science*, 2012, **335**, 1194.
- 70 39. J. Lipfert and S. Doniach, *Annu Rev Biophys Biomol Struct*, 2007, **36**, 307-327.
40. X. Zuo, J. Wang, T. R. Foster, C. D. Schwieters, D. M. Tiede, S. E. Butcher and Y. X. Wang, *J Am Chem Soc*, 2008, **130**, 3292-3293.
- 75 41. S. Doniach, *Chem Rev*, 2001, **101**, 1763-1778.
42. M. B. Kozin and D. I. Svergun, *Journal of Applied Crystallography*, 2001, **34**, 33-41.
- 80