

Sensors & Diagnostics

rsc.li/sensors

The Royal Society of Chemistry is the world's leading chemistry community. Through our high impact journals and publications we connect the world with the chemical sciences and invest the profits back into the chemistry community.

IN THIS ISSUE

ISSN 2635-0998 CODEN SDEIAR 5(6) 751-886 (2026)



Cover
Image created by Chong Ahn.
Image reproduced by
permission of Chong Ahn.

PROFILE

757

Contributors to the *Sensors & Diagnostics* Emerging Investigators Collection 2025

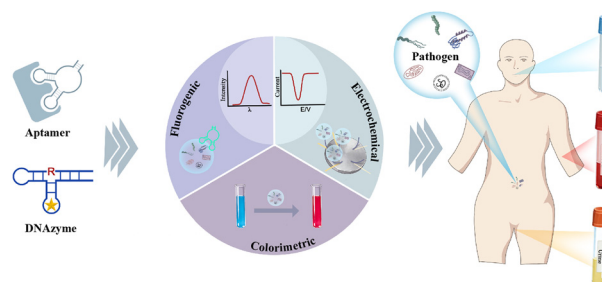


CRITICAL REVIEWS

761

Aptamer- and DNAzyme-based biosensors for pathogen detection: diagnostic strategies and clinical applications

Yunting Fan, Ruiqin Jiang, Hongyan Liu, Wei Tian, Meng Liu* and Zijie Zhang*





EES Solar

Exceptional research on solar energy and photovoltaics

Part of the EES family

Join | Publish with us
in | rsc.li/EESolar

Registered charity number: 207890

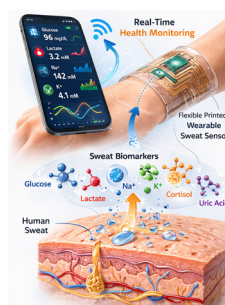


CRITICAL REVIEWS

783

Fabrication methods and applications of printed wearable sensors for real-time sweat analysis: a comprehensive review

Pegah Bavafa, Yahya Sorkhe, Lia A. Stanciu and Aytekin Uzunoglu*



TUTORIAL REVIEW

813

Non-enzymatic sweat-based glucose sensors: progress, difficulties, and prospects

P. Kirubha, B. S. Sreeja and S. Fouziya Sulthana*

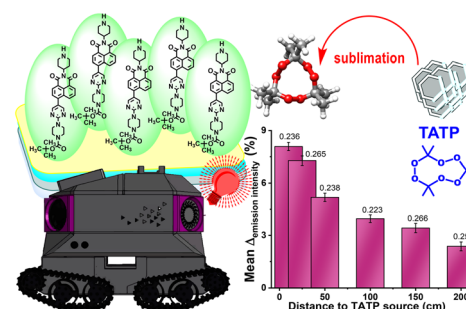


PAPERS

828

A multilayer fluorogenic material for the ultrasensitive detection of TATP in air, suitable for implementation on a mechanized semi-autonomous robotic platform

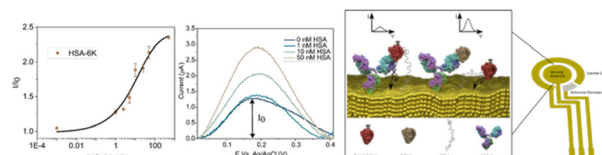
Irene Abajo-Cuadrado, Andrea Revilla-Cuesta, Ricardo Fernández-Ordóñez, J. Rafael Santana-Tejada, Yeray Moreno-Macías, Cristian Almeida-Estévez, Carla Hernando-Muñoz, José García-Calvo, Manuel Avella and Tomás Torroba*



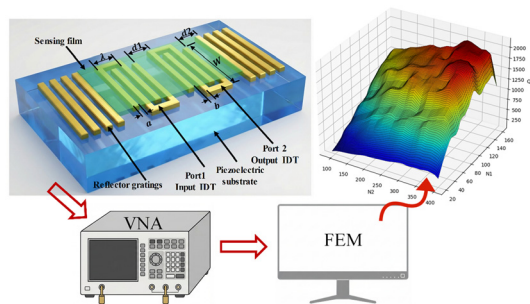
837

A molecular switch framework for reagentless electrochemical detection of proteins

Erfan Shirzadi,* Yue Xu, Mara Jenkins, Jianwen Wang, Sunandan Tandon, Gyorgy Jaics, Zoya Leonenko and Mahla Poudineh*



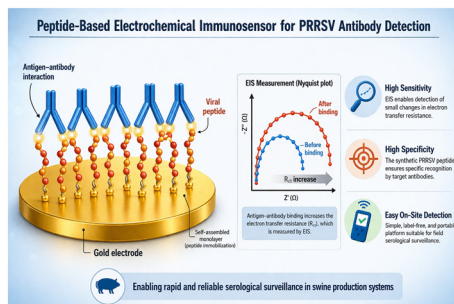
848



Measurement-aligned finite element modeling for predictive design of dual-port SAW resonators

Hongyang Guo, Xiaojing Zhang, Xinxin Li, Ping Wang,* Hao Jia* and Liuqing Zhuang*

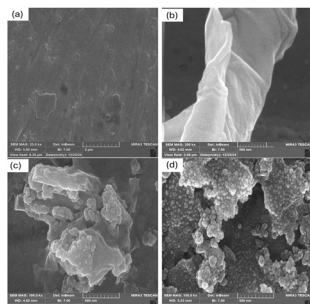
858



Establishment of a peptide-based electrochemical immunosensor for detecting antibodies against the GP5 protein from the porcine reproductive and respiratory syndrome virus

Luis Enrique Franco-Correa, Luis A. Ortiz-Frade, Alejandro Bravo Patiño, Francisco Perez-Duran, Fernando Calderón-Rico, Alicia Gabriela Zamora-Avilés, Martha Leticia Jiménez-González, Gabriel Espinosa, Daniel Durand-Herrera, Ricarda Cortés-Vieyra and Rosa Elvira Nuñez-Anita*

868



A novel label-free EC aptasensor for early detection of H9N2 influenza using FFT-square wave voltammetry and validated by molecular docking

Negar Heidari, Nogol D. Moghaddam, Sharmin Kharrazi, Jahan B. Ghasemi, Melika F. Aghdam, Mahdi Amrollahi Bioyki, Ebrahim Ghafar-Zadeh* and Parviz Norouzi*

