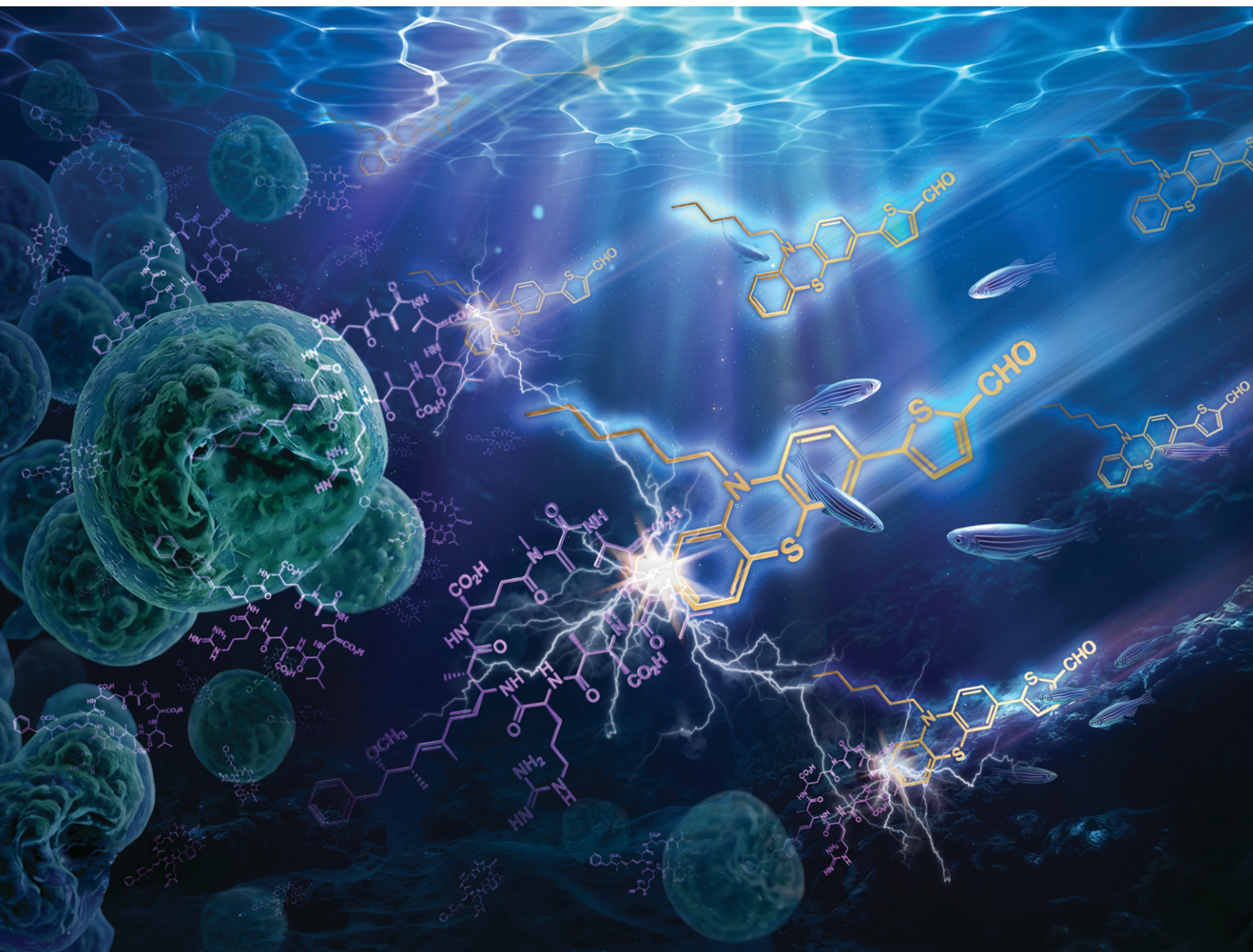


Sensors & Diagnostics

rsc.li/sensors



ISSN 2635-0998

PAPER

Xiao Yao and Zhuwu Jiang *et al.*
Design and mechanistic study of a high-sensitivity
small-molecule fluorescent probe for the detection
of microcystin-LR

GOLD
OPEN
ACCESS

EES Solar

Exceptional research on solar
energy and photovoltaics

Part of the EES family

Join
in | Publish with us
rsc.li/EESolar