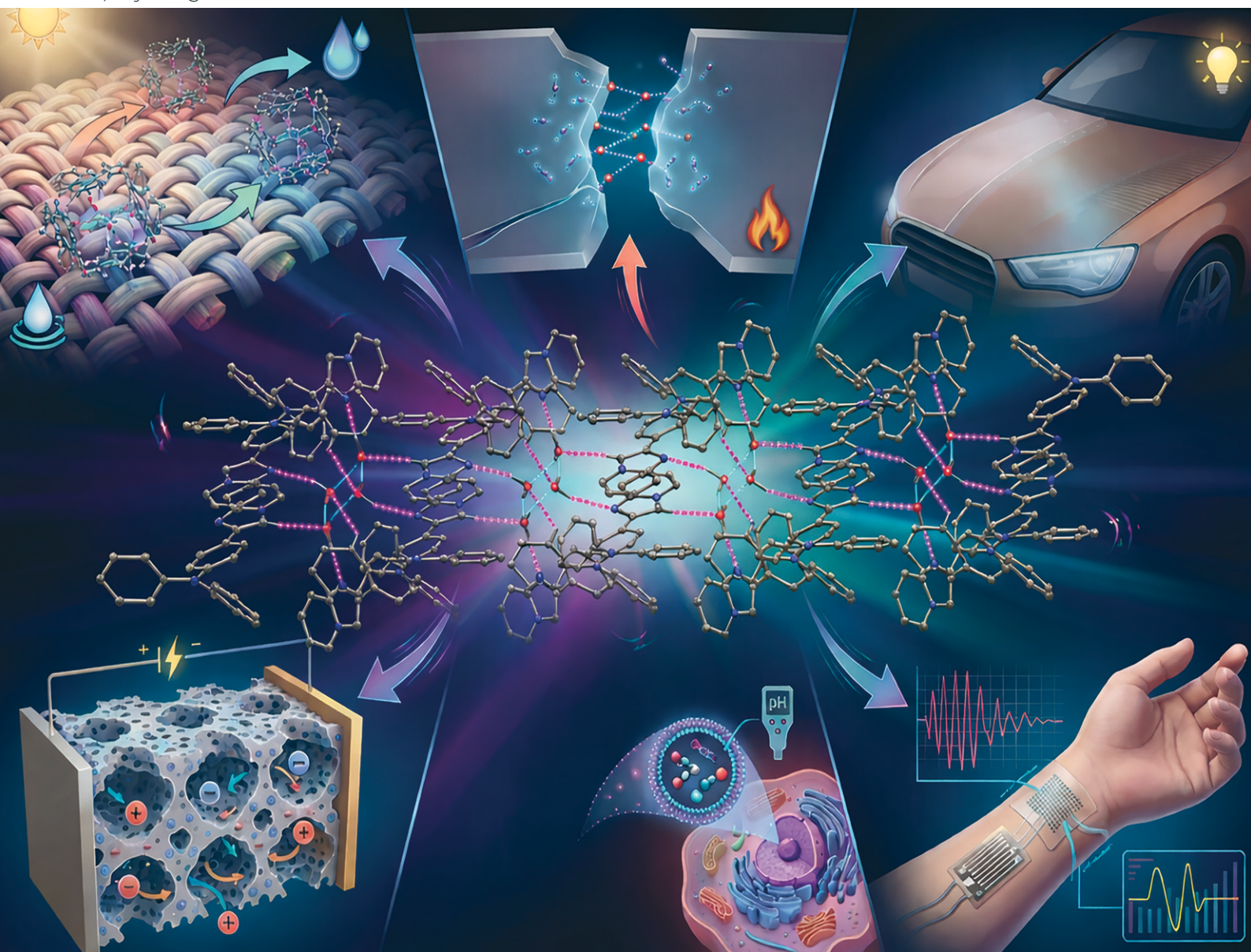


# CrystEngComm

rsc.li/crystengcomm



ISSN 1466-8033

## HIGHLIGHT

Jayaraman Pitchaimani and Vedichi Madhu  
Recent advancements in multi-stimuli-responsive organic  
and inorganic materials: crystallographic insights into  
structure–function relationships

# RSC Applied Interfaces

GOLD  
OPEN  
ACCESS

Interfacial and surface research  
with an applied focus

Interdisciplinary and open access

[rsc.li/RSCApplInter](https://rsc.li/RSCApplInter)

Fundamental questions  
Elemental answers