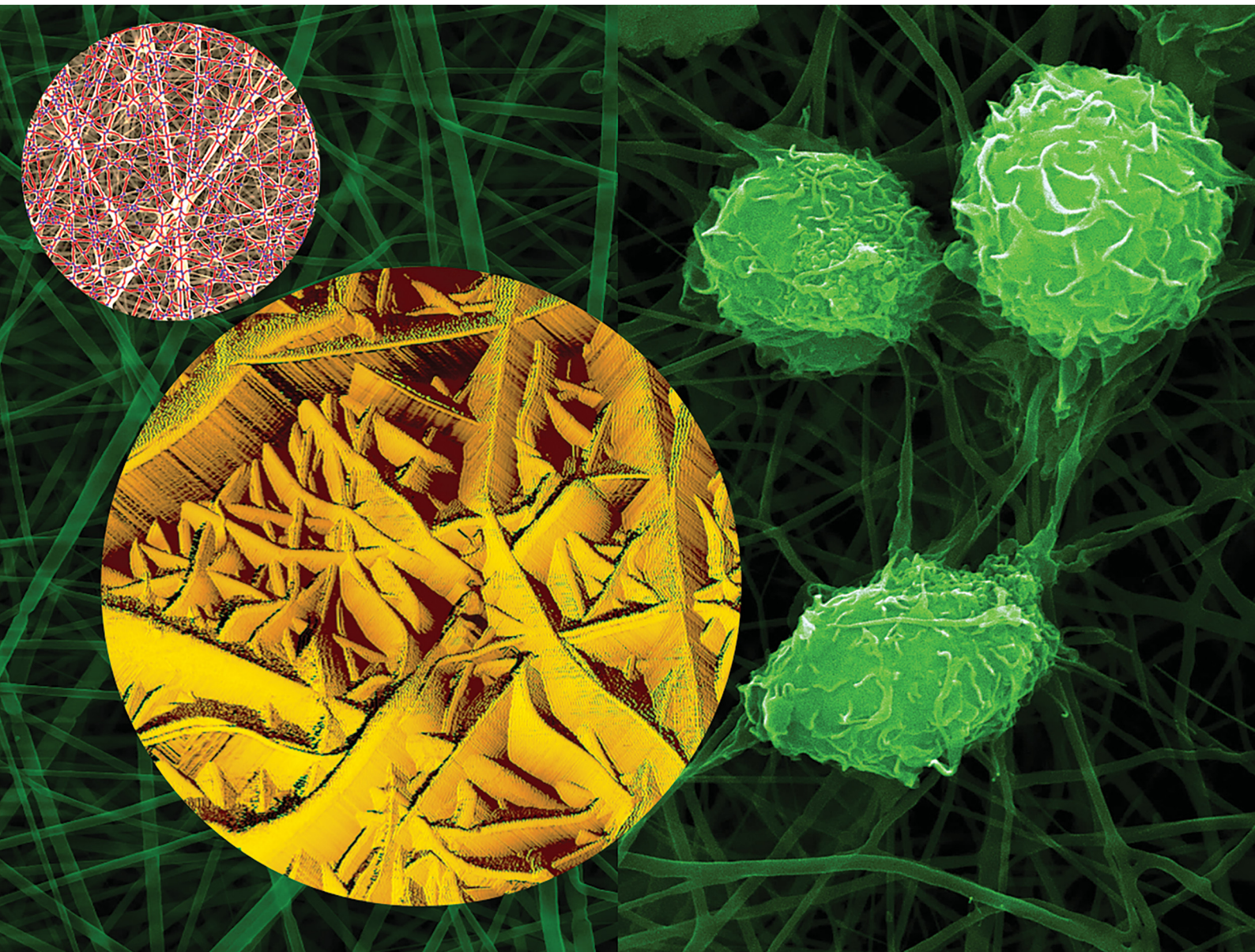


# Journal of Materials Chemistry B

Materials for biology and medicine

[rsc.li/materials-b](https://rsc.li/materials-b)



ISSN 2050-750X

**PAPER**

Archana Bhaw-Luximon *et al.*  
Predicting inflammatory response of biomimetic nanofibre  
scaffolds for tissue regeneration using machine learning and  
graph theory

GOLD  
OPEN  
ACCESS

# EES Solar

Exceptional research on solar  
energy and photovoltaics

Part of the EES family

**Join**  
**in** | Publish with us  
[rsc.li/EESolar](https://rsc.li/EESolar)