

# RSC Applied Polymers

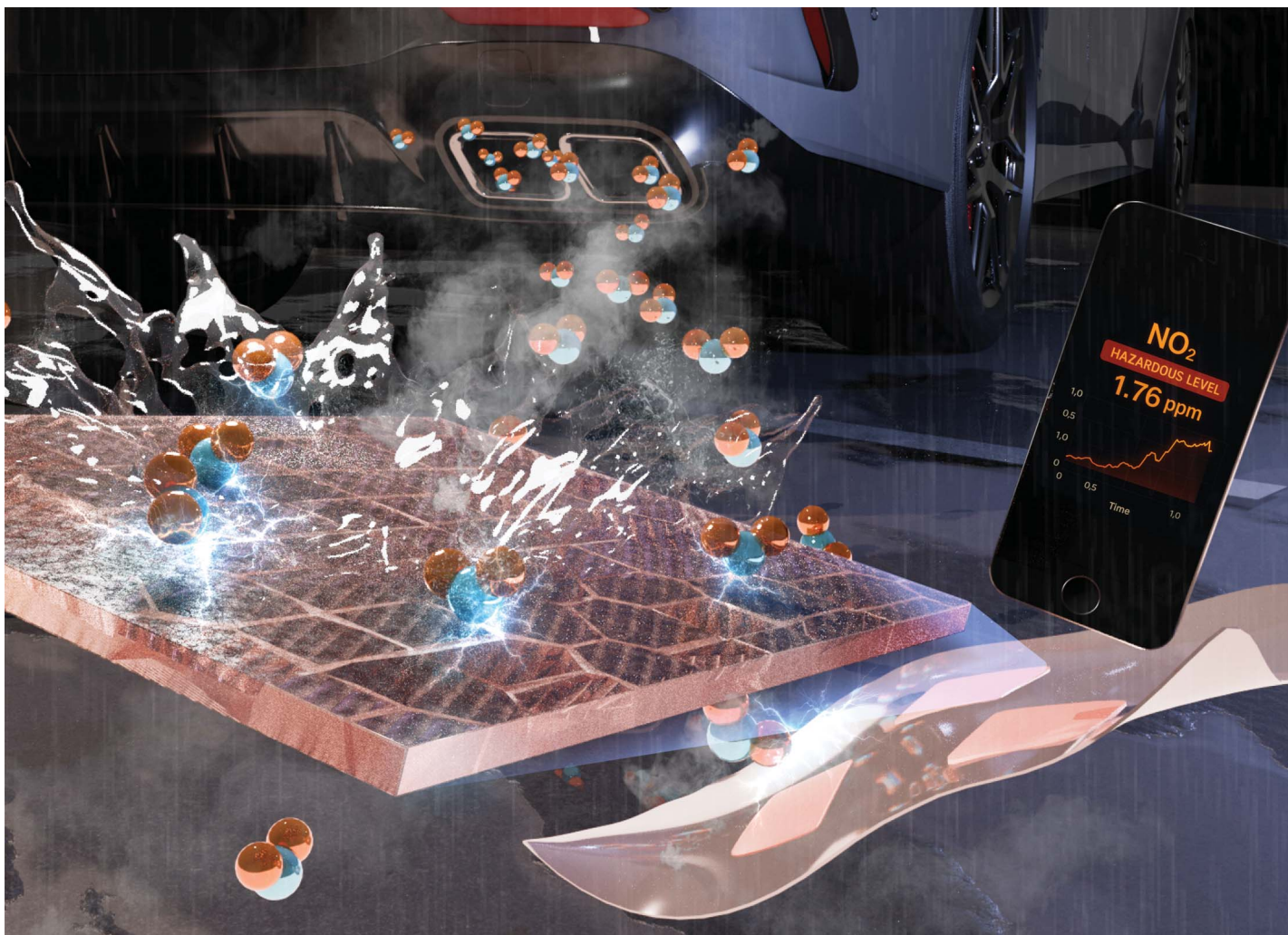
**The application of polymers,  
both natural and synthetic**

**Interdisciplinary and open access**

**[rsc.li/RSCApplPolym](https://rsc.li/RSCApplPolym)**

**Fundamental questions  
Elemental answers**





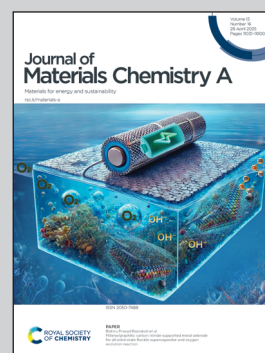
Showcasing research from Professor Junwoo Lee's laboratory, Department of Molecular Science and Technology, Ajou University, Suwon 16499, Republic of Korea.

Enhancing NO<sub>2</sub> sensing performance and stability: low-crystallinity conjugated polymers with localized aggregates *via* ethylene glycol pendants

Conjugated polymers are vital for detecting harmful gases, but balancing gas diffusion and crystallinity is challenging. We demonstrate an ethylene glycol-based low crystallinity design that enhances NO<sub>2</sub> sensing and stability.

Image reproduced by permission of Ji-Soo Jang and Junwoo Lee from *J. Mater. Chem. A*, 2025, **13**, 11323.

### As featured in:



See Ji-Soo Jang, Junwoo Lee *et al.*, *J. Mater. Chem. A*, 2025, **13**, 11323.