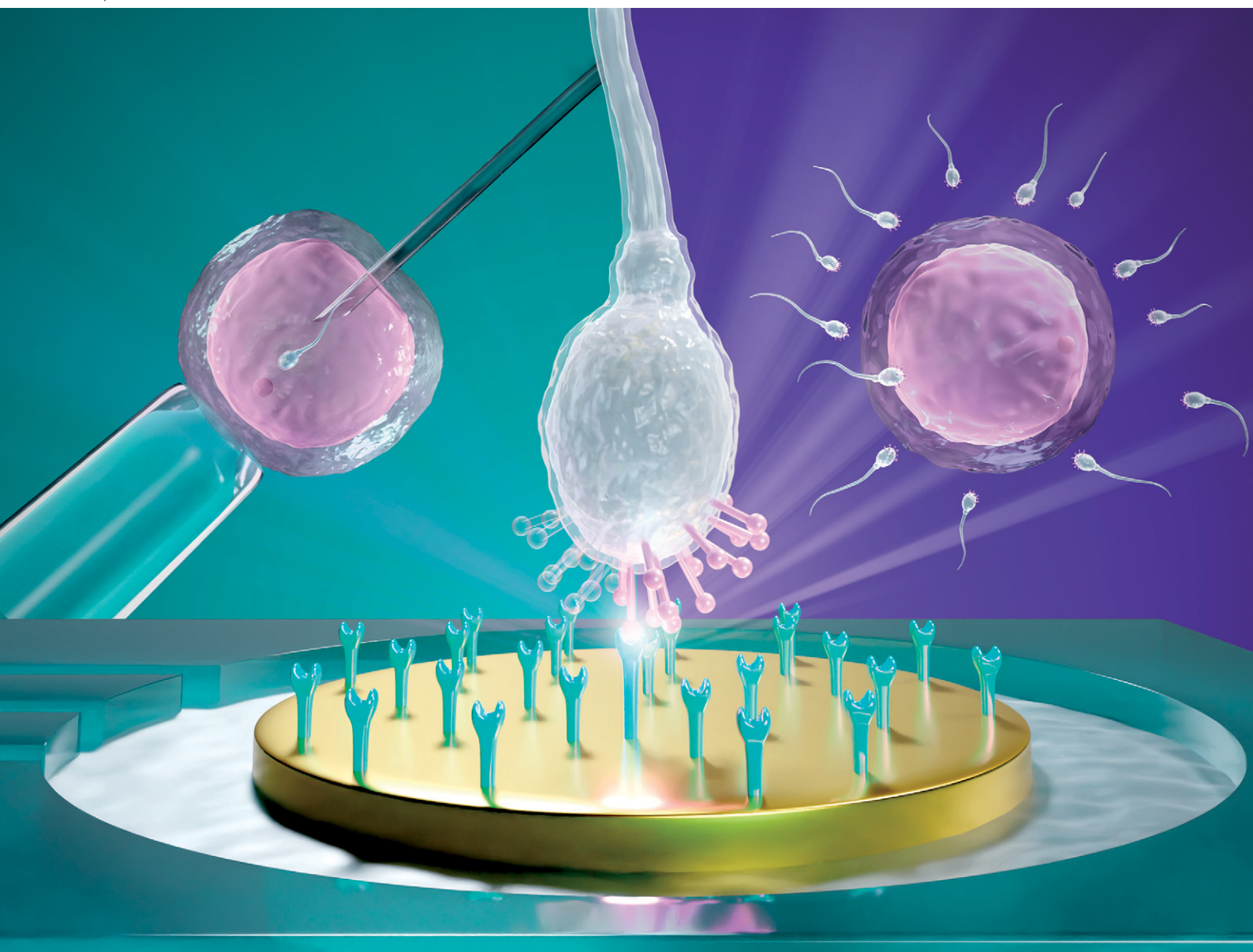


# Sensors & Diagnostics

rsc.li/sensors



ISSN 2635-0998

**PAPER**

Jaime Castillo-León, Jae Shin *et al.*  
JUNO-Checked – a live cell electrochemical biosensor for  
sperm function diagnostics

# Industrial Chemistry & Materials

GOLD  
OPEN  
ACCESS

Focus on industrial chemistry  
Advance material innovations  
Highlight interdisciplinary feature

Innovative.  
Interdisciplinary.  
Problem solving

APCs currently waived

Learn more about ICM  
Submit your high-quality article

 **@IndChemMater**

 **@IndChemMater**

**rsc.li/icm**