


Cite this: *Nanoscale*, 2025, 17, 21875

Correction: Carbon dots with tunable dual emissions: from the mechanism to the specific imaging of endoplasmic reticulum polarity

E. Shuang,^a Quan-Xing Mao,^{a,b} Jian-Hua Wang^a and Xu-Wei Chen^{*a}

DOI: 10.1039/d5nr90182k

rsc.li/nanoscale

Correction for 'Carbon dots with tunable dual emissions: from the mechanism to the specific imaging of endoplasmic reticulum polarity' by E. Shuang *et al.*, *Nanoscale*, 2020, 12, 6852–6860, <https://doi.org/10.1039/C9NR10982J>.

The authors regret an error in Fig. 1 in the original article. In the previously published Fig. 1, the particle size distribution diagram of CDs-3 (panel k of Fig. 1) was presented as the same diagram as CDs-2 by mistake. The new Fig. 1 provided below replaces the originally published figure and contains the correct diagram. This error does not affect the experimental data, results analysis or conclusions of the work.

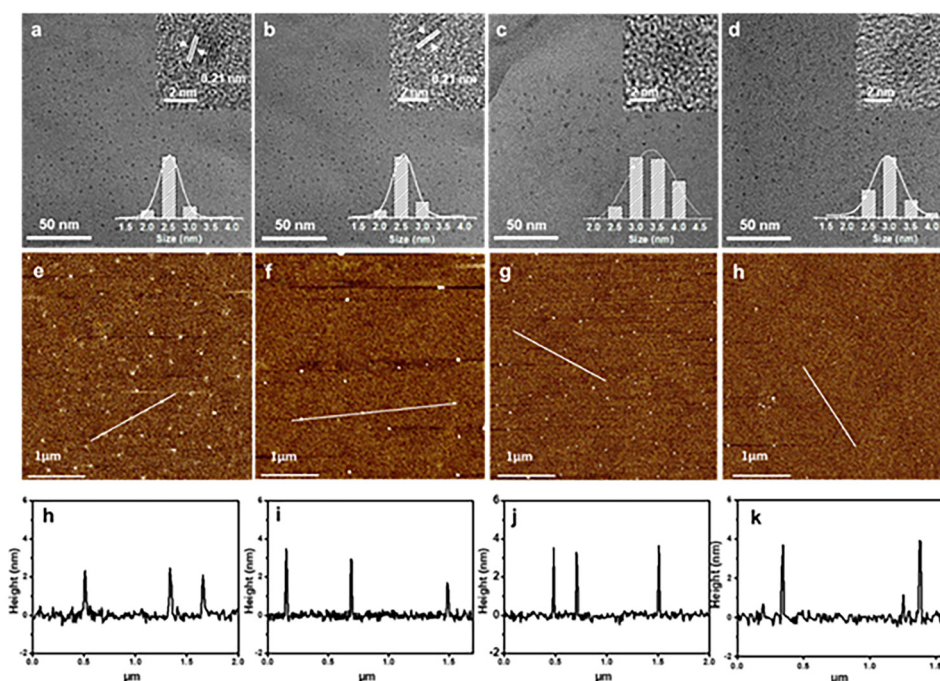


Fig. 1 TEM and HRTEM images (inset) of CDs-0 (a), CDs-1 (b), CDs-2 (c) and CDs-3 (d). AFM images of CDs-0 (e), CDs-1 (f), CDs-2 (g) and CDs-3 (h). Particle size distribution diagrams of CDs-0 (h), CDs-1 (i), CDs-2 (j) and CDs-3 (k).

^aResearch Center for Analytical Sciences, Department of Chemistry, College of Sciences, Northeastern University, Box 332, Shenyang 110819, China.
E-mail: chenxuwei@mail.neu.edu.cn; Fax: +86 24 83676698; Tel: +86 24 83688944

^bCollege of Chemistry, Liaoning University, Shenyang 110036, China



An independent expert has viewed the corrected image and has concluded that they are consistent with the discussions and conclusions presented.

The Royal Society of Chemistry apologises for these errors and any consequent inconvenience to authors and readers.

