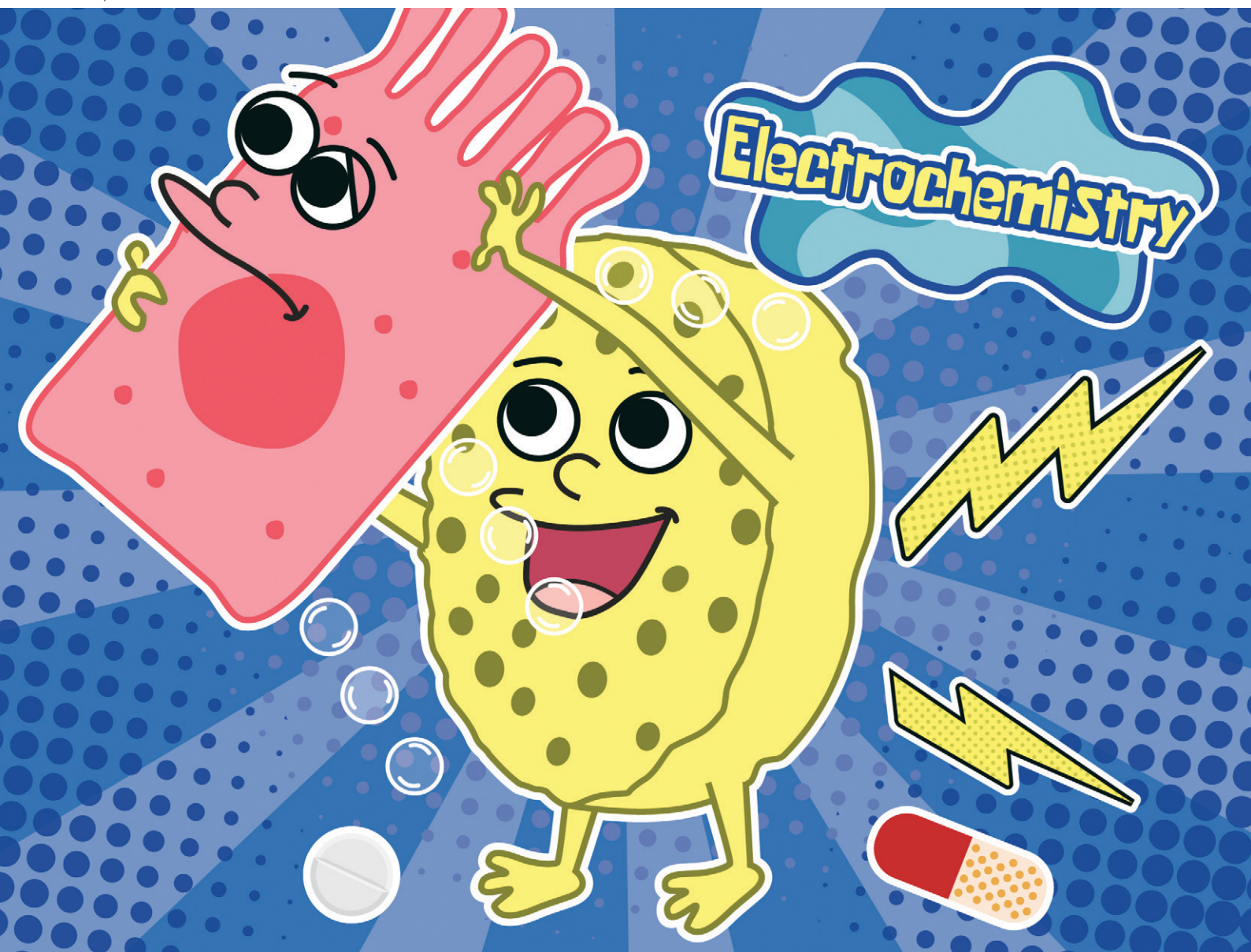


# Lab on a Chip

Devices and applications at the micro- and nanoscale

rsc.li/loc



ISSN 1473-0197

**PAPER**

Kosuke Ino, Yoshinobu Utagawa *et al.*  
*In situ* electrochemical measurement of alkaline phosphatase  
activity in engineered gut models using a porous membrane  
electrode device