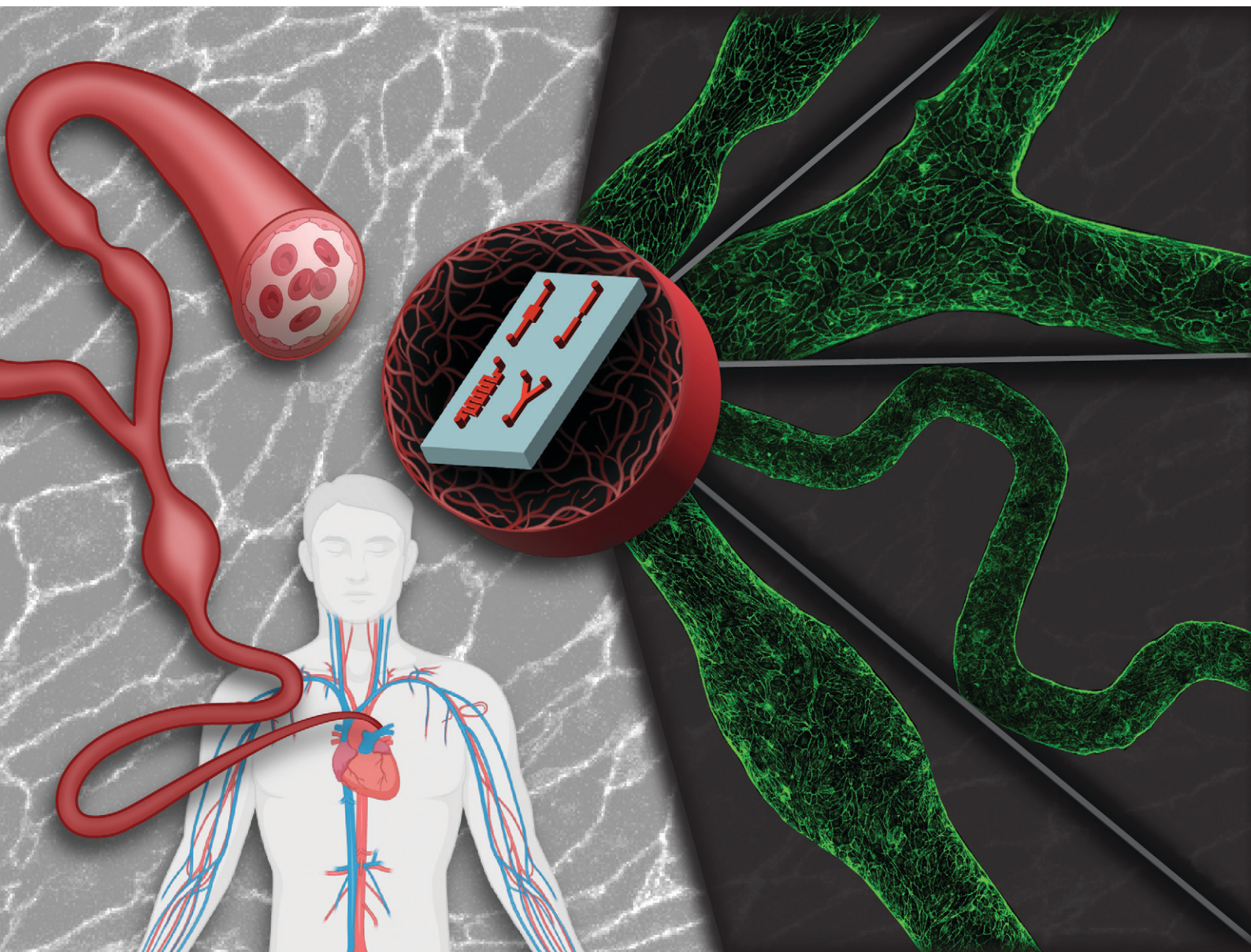


Lab on a Chip

Devices and applications at the micro- and nanoscale

rsc.li/loc



ISSN 1473-0197

PAPER

Tanmay Mathur, Abhishek Jain *et al.*
Vascular architecture-on-chip: engineering complex blood
vessels for reproducing physiological and heterogeneous
hemodynamics and endothelial function