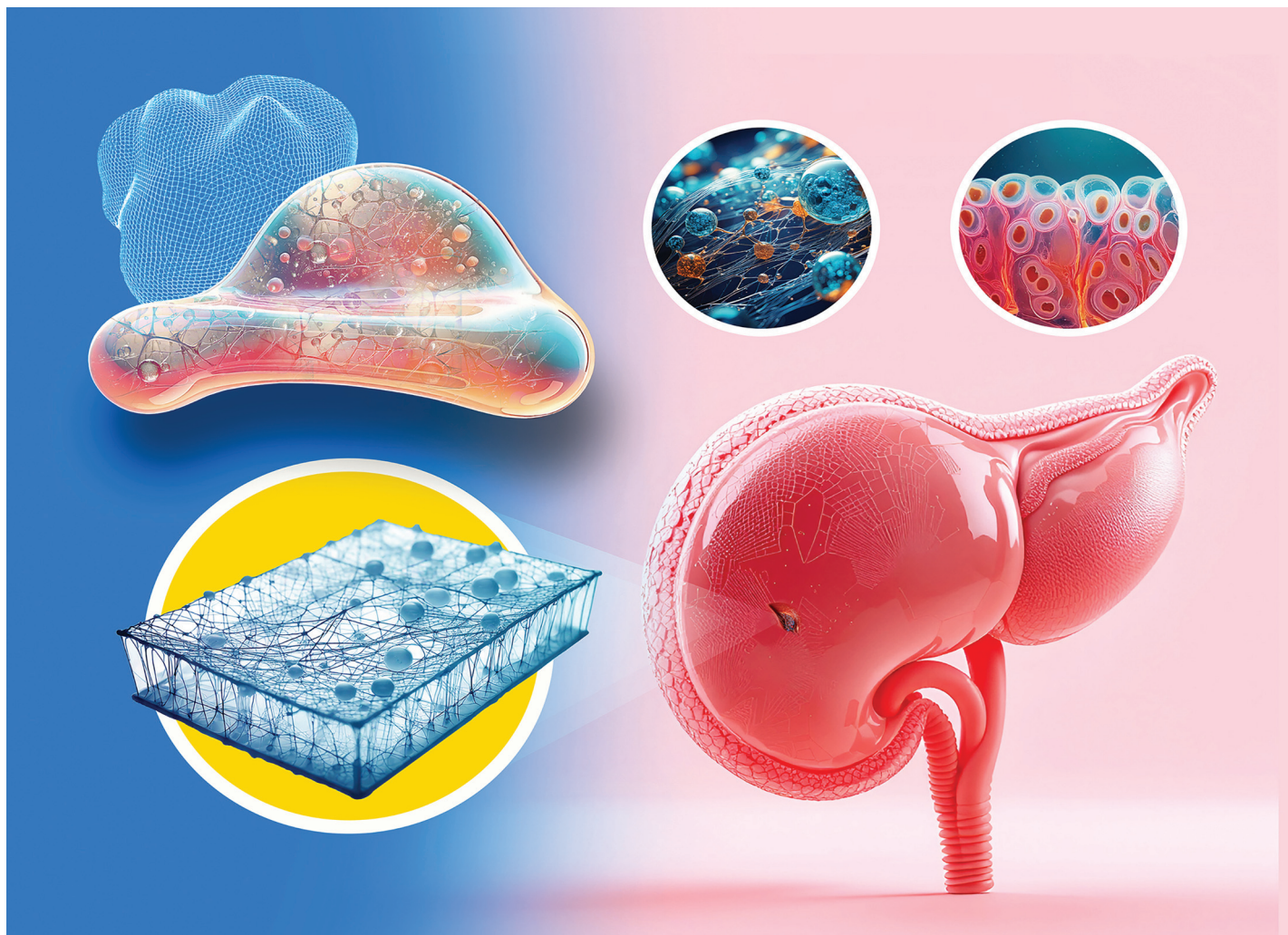


EES Solar

**Exceptional research on solar
energy and photovoltaics**

Part of the EES family

**Join
in** | Publish with us
rsc.li/EESolar



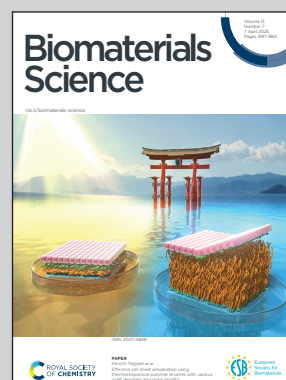
Showcasing joint research from Professor Mendoza-Novelo laboratory, Division of Science and Engineering, University of Guanajuato at Leon, Mexico; the Centre for Optics Research, Mexico; and the Centre for Biomedical Technology, Technical University of Madrid, Spain.

Pericardial bioscaffold coated with ECM gels and urothelial cells for the repair of a rabbit urinary bladder defect

Gpe. Hortensia Luevano, Birzabith Mendoza, *et al.* report a urothelial cell seeding technique based on the use of a gel composed of collagen and oligourethanes that provide a scaffolding network for cellular repopulation of ECM constructs for urinary bladder reconstructive surgery.

Image reproduced by permission of Birzabith Mendoza-Novelo from *Biomater. Sci.*, 2025, **13**, 1671.

As featured in:



See Birzabith Mendoza-Novelo *et al.*, *Biomater. Sci.*, 2025, **13**, 1671.