

CORRECTION

View Article Online
View Journal | View Issue



Cite this: *J. Mater. Chem. B*, 2024, 12, 9420

DOI: 10.1039/d4tb90146k

rsc.li/materials-b

Correction: Near-infrared light triggered photothermal therapy and enhanced photodynamic therapy with a tumor-targeting hydrogen peroxide shuttle

Bing Wang,^{*a} Weiming Lin,^a Zhengwei Mao^{*b} and Changyou Gao^b

Correction for 'Near-infrared light triggered photothermal therapy and enhanced photodynamic therapy with a tumor-targeting hydrogen peroxide shuttle' by Bing Wang *et al.*, *J. Mater. Chem. B*, 2018, **6**, 3145–3155, <https://doi.org/10.1039/C8TB00476E>.

The authors regret errors in two figures in the published article: the Ki67 images of groups “1” and “4” in Fig. 9e, and the H&E images of liver in Fig. 10b were incorrect. The corrected images for Fig. 9 and 10 are shown here (the captions remain unchanged). The authors declare that these errors do not impact the overall findings and conclusions of the article.

^a Department of Polymer Materials, Zhejiang Sci-Tech University, Hangzhou 310018, China. E-mail: wbing388@163.com

^b MOE Key Laboratory of Macromolecular Synthesis and Functionalization, Department of Polymer Science and Engineering, Zhejiang University, Hangzhou 310027, China. E-mail: zwmao@zju.edu.cn



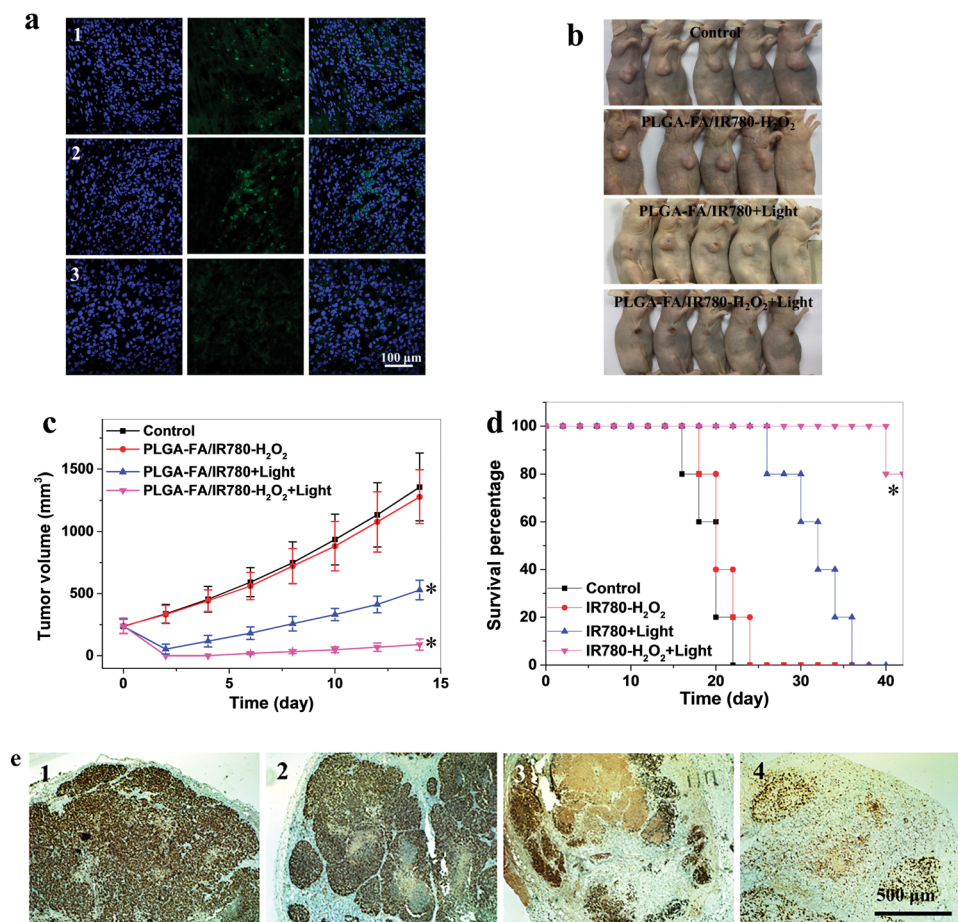


Fig. 9 (a) HIF-1 α staining of tumor tissues collected from mice in different groups: (1) saline, (2) PLGA-FA/IR780 + 3 min irradiation, and (3) PLGA-FA/IR780-H₂O₂ + 3 min laser irradiation. First column: blue fluorescence of DAPI; second column: green immunofluorescence staining with HIF-1 α antibody; third column: overlay images. (b) Photo images of tumor bearing mice 14 d post treatment. (c) Average tumor volume of the mice intravenously injected with (1) 200 μ L physiological saline, (2) 200 μ L 5 mg mL⁻¹ PLGA-FA/IR780-H₂O₂ NPs, (3) 200 μ L 5 mg mL⁻¹ PLGA-FA/IR780 NPs + 3 min laser irradiation, (4) 200 μ L 5 mg mL⁻¹ PLGA-FA/IR780-H₂O₂ NPs + 3 min laser irradiation. (d) Kaplan-Meier plots showing the percentage of animals remaining in the study as a function of time. * indicates significant difference at the $p < 0.05$ level. (e) Ki-67 staining of the tumour tissues from each group.



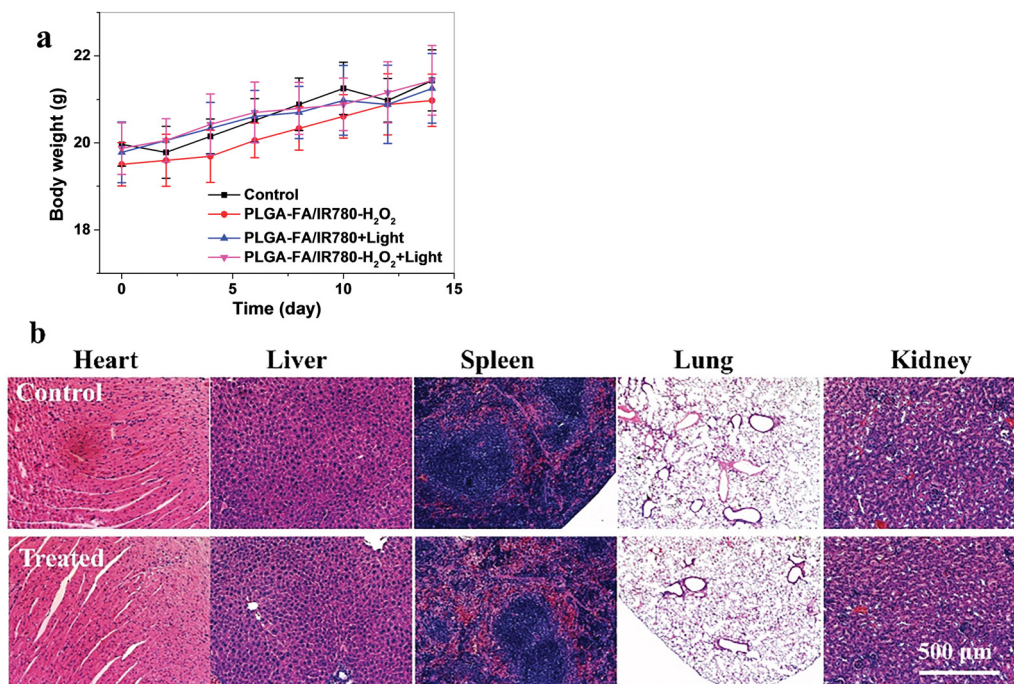


Fig. 10 (a) Body weight of mice in different groups as a function of time. (b) Photo images of H&E staining sections of the major organs (heart, liver, spleen, lung, and kidney) in the saline treated control group and PLGA-FA/IR780-H₂O₂ NPs + 3 min laser irradiation group, respectively.

The Royal Society of Chemistry apologises for these errors and any consequent inconvenience to authors and readers.