

Food & Function

rsc.li/food-function

The Royal Society of Chemistry is the world's leading chemistry community. Through our high impact journals and publications we connect the world with the chemical sciences and invest the profits back into the chemistry community.

IN THIS ISSUE

ISSN 2042-650X CODEN FFOUAI 15(1) 1–428 (2024)



Cover
See Di Wang, Changtian Li
et al., pp. 79–95.

Image reproduced by
permission of Di Wang from
Food Funct., 2024, **15**, 79.



Inside cover
See Liang Song et al.,
pp. 96–109.

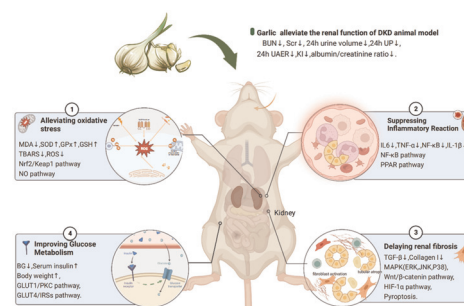
Image reproduced by
permission of Liang Song
from *Food Funct.*,
2024, **15**, 96.

REVIEWS

12

Evidential support for garlic supplements against diabetic kidney disease: a preclinical meta-analysis and systematic review

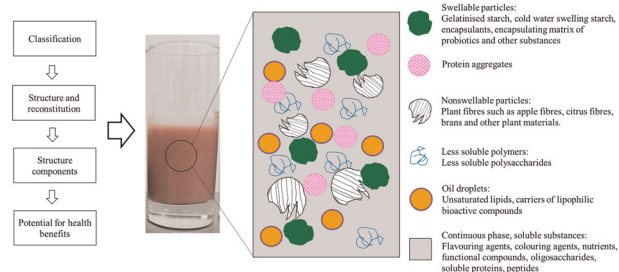
Yayi Jiang, Zihan Li, Rensong Yue,* Guojie Liu,
Maoyi Yang, Caiyi Long and Dawei Yan



37

Ingredients, structure and reconstitution properties of instant powder foods and the potential for healthy product development: a comprehensive review

Yi Ren, Fuhuai Jia and Duo Li*



RSC Advances

**At the heart of open access for
the global chemistry community**

Editor-in-chief

Russell J Cox

Leibniz Universität Hannover, Germany

We stand for:



Breadth We publish work in all areas of chemistry and reach a global readership



Quality Research to advance the chemical sciences undergoes rigorous peer review for a trusted, society-run journal



Affordability Low APCs, discounts and waivers make publishing open access achievable and sustainable



Community Led by active researchers, we publish quality work from scientists at every career stage, and all countries

Submit your work now

rsc.li/rsc-advances

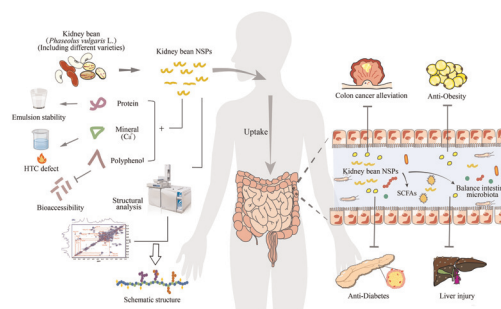
[@RSC_Adv](#)

REVIEWS

62

Non-starch polysaccharides from kidney beans: comprehensive insight into their extraction, structure and physicochemical and nutritional properties

Chunli Kong, Caiping Duan, Yixuan Zhang, Yiyang Wang, Zheng Yan* and Sumei Zhou*

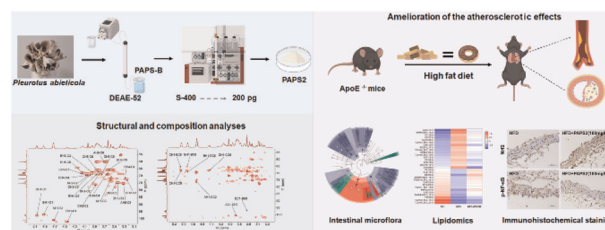


PAPERS

79

The amelioration of a purified *Pleurotus abieticola* polysaccharide on atherosclerosis in ApoE^{-/-} mice

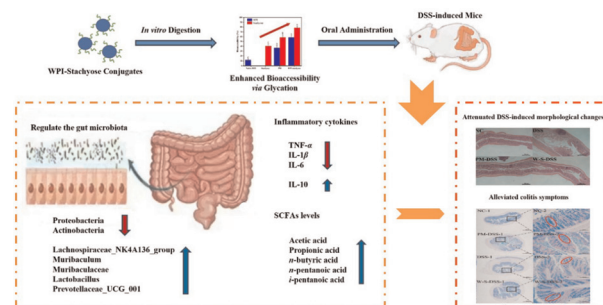
Lei Xing, Fange Kong, Chunxia Wang, Lanzhou Li, Shichao Peng, Di Wang* and Changtian Li*



96

Targeting DSS-induced ulcerative colitis: evaluating the therapeutic potential of WPI–stachyose conjugates

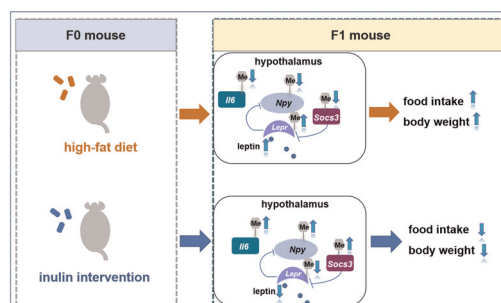
Zi-han Wang, Guang-yao Zhang, Cong Sun, Shu-xin Ning, Da-yong Zhou and Liang Song*



110

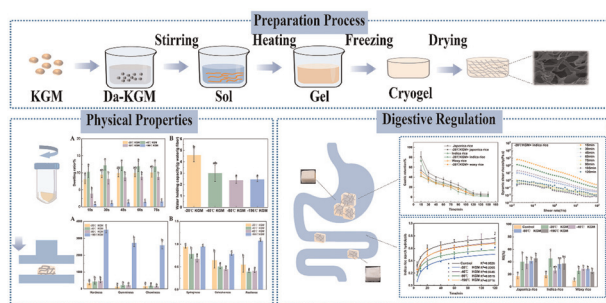
Maternal inulin alleviates high-fat diet-induced lipid disorder in offspring by epigenetically modulating hypothalamus feeding circuit-related genes

Qian Zhang, Xinhua Xiao,* Jia Zheng, Ming Li, Miao Yu, Fan Ping and Tong Wang



PAPERS

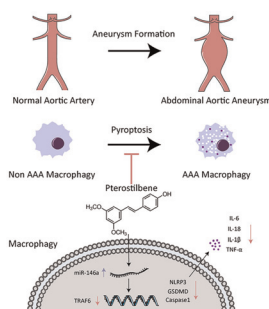
125



Preparation of a novel expandable konjac fiber at different freezing temperatures and exploration of its digestion regulation functions

Sha Li, Longchen Shang, Yuanyuan Chen, Rong Song, Jing Li and Bin Li*

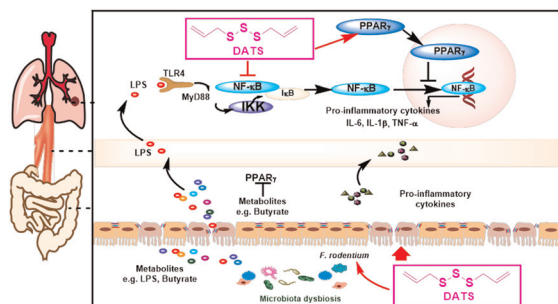
139



Pterostilbene alleviates abdominal aortic aneurysm via inhibiting macrophage pyroptosis by activating the miR-146a-5p/TRAFF6 axis

Huoying Cai, Lin Huang, Mingshan Wang, Ruiming Liu, Jiacong Qiu, Yuansen Qin, Xi Yao, Shenming Wang,* Chen Yao,* Zuojun Hu* and Yu Zhou*

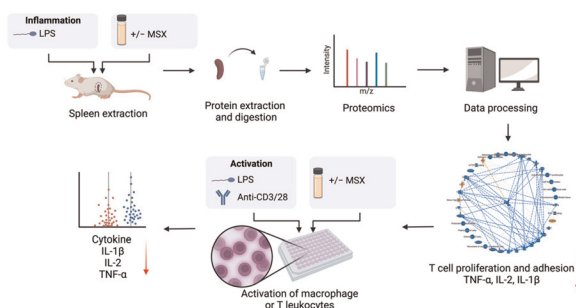
158



Diallyl trisulfide inhibits 4-(methylnitrosamino)-1-(3-pyridyl)-1-butanone-induced lung cancer via modulating gut microbiota and the PPAR γ /NF- κ B pathway

Zhuo Qu, Jiahui Tian, Jiachen Sun, Ying Shi, Jianqiang Yu, Wannian Zhang and Chunlin Zhuang*

172



Exploring immunoregulatory properties of a phenolic-enriched maple syrup extract through integrated proteomics and *in vitro* assays

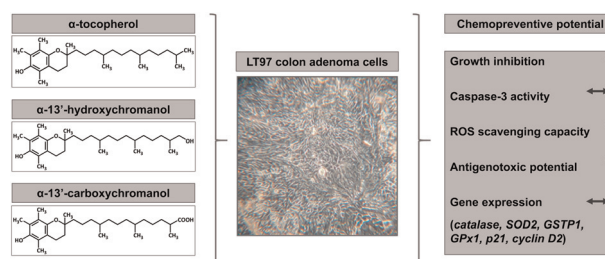
Tess Puopolo, Ying Chen, Hang Ma, Chang Liu* and Navindra P. Seeram*



183

Chemopreventive effects of α -tocopherol and its long-chain metabolites α -13'-hydroxy- and α -13'-carboxychromanol in LT97 colon adenoma cells

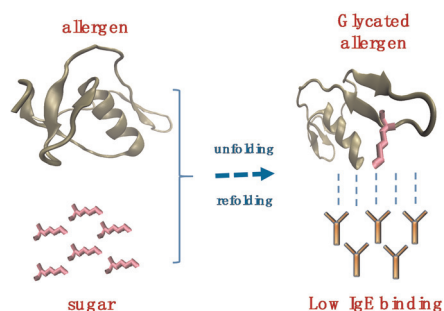
Wiebke Schlörmann,* Sijia Liao, Tülin Dinc, Stefan Lorkowski, Maria Wallert and Michael Glei



196

Effects of unfolding treatment assisted glycation on the IgE/IgG binding capacity and antioxidant activity of ovomucoid

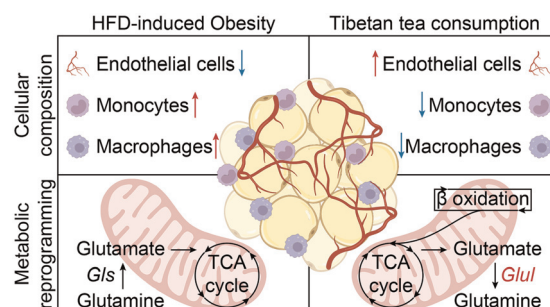
Xian Xia, Jiangdong Li, Rui Liang, Yi Li, Xiaojuan Ma,* Ying Yang and Daniel Lozano-Ojalvo



208

Tibetan tea consumption prevents obesity by modulating the cellular composition and metabolic reprogramming of white adipose tissue

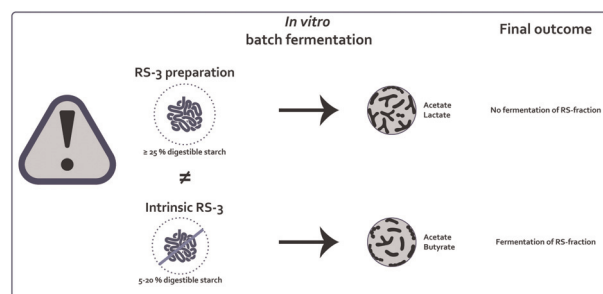
Songqi Duan, Hongyu Li, Ziqi Wang, Junqi Li, Weimin Huang, Zhengfeng Fang, Cheng Li, Zhen Zeng,* Baofa Sun and Yuntao Liu*



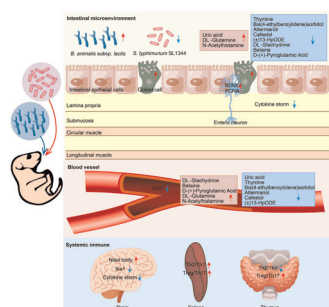
223

Presence of digestible starch impacts *in vitro* fermentation of resistant starch

Cynthia E. Klostermann, Martha F. Endika, Dimitrios Kouzounis, Piet L. Buwalda, Paul de Vos, Erwin G. Zoetendal, Johannes H. Bitter and Henk A. Schols*



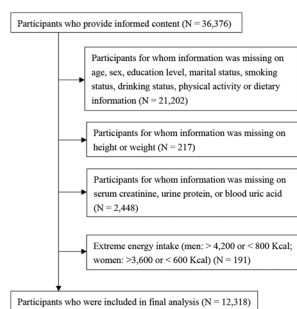
236



Bifidobacterium animalis subsp. *lactis* boosts neonatal immunity: unravelling systemic defences against *Salmonella*

Chunxiu Lin, Yugui Lin, Shunhe Wang, Jialiang Wang, Xuhua Mao, Yonghua Zhou, Hao Zhang, Wei Chen and Gang Wang*

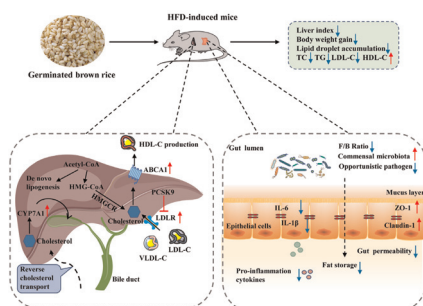
255



Association between dietary patterns and chronic kidney disease combined with hyperuricemia

Mengrui Luo, Tiancong Liu, Hao Ju, Yang Xia, Chao Ji* and Yuhong Zhao*

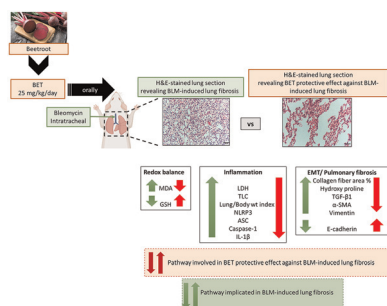
265



Whole grain germinated brown rice intake modulates the gut microbiota and alleviates hypertriglyceridemia and hypercholesterolemia in high fat diet-fed mice

Shuai Han, Xiuxiu Wu, Lingfeng Zhu, Han Lu, Xuke Ling, Yi Luo, Zuomin Hu, Yaping Zhou, Yiping Tang and Feijun Luo*

284



Betanin protects against bleomycin-induced pulmonary fibrosis by regulating the NLRP3/IL-1 β /TGF- β 1 pathway-mediated epithelial-to-mesenchymal transition

Nesma A. Abd Elrazik* and Sahar A Helmy

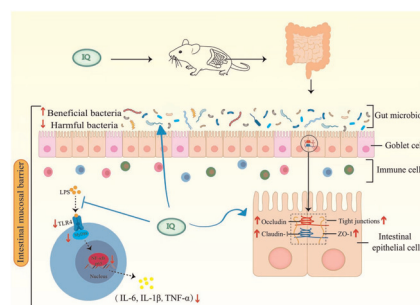


PAPERS

295

Isoquercitrin alleviates lipopolysaccharide-induced intestinal mucosal barrier damage in mice by regulating TLR4/MyD88/NF- κ B signaling pathway and intestinal flora

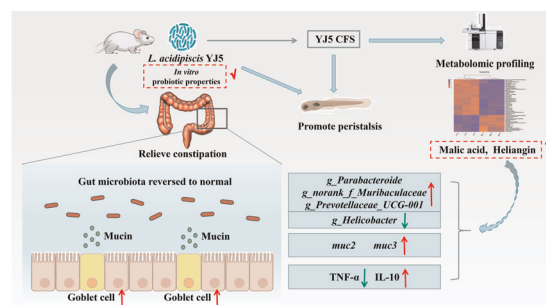
Enhui Tang, Tong Hu, Zhaokang Jiang, Xiaojun Shen, Huan Lin, Haiyan Xian and Xinlan Wu*



310

Ligilactobacillus acidipiscis YJ5 modulates the gut microbiota and produces beneficial metabolites to relieve constipation by enhancing the mucosal barrier

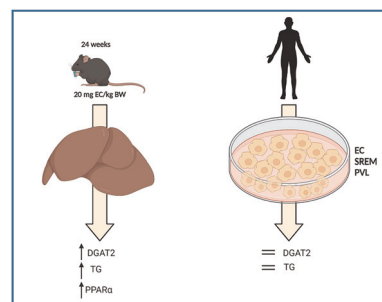
Fei Shen, Qianqian Wang, Sami Ullah, Ya Pan, Minjie Zhao, Jing Wang, Ming Chen, Fengqin Feng* and Hao Zhong*



326

Effects of (–)-epicatechin on hepatic triglyceride metabolism

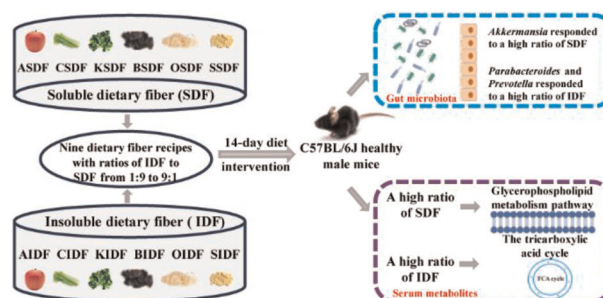
Zahra Mostofinejad, Eleonora Cremonini, Jiye Kang and Patricia I. Oteiza*



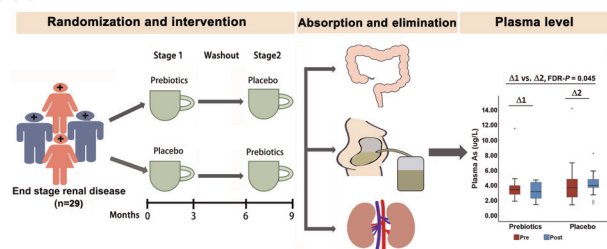
338

Insoluble/soluble fraction ratio determines effects of dietary fiber on gut microbiota and serum metabolites in healthy mice

Yanli Zhang, Jielun Hu, Yadong Zhong, Shuai Liu, Liandi Liu, Xinyi Mu, Chunhua Chen, Shenji Yang, Guohao Li, Duoduo Zhang, Xinru Huang, Jinrui Yang, Xiaojun Huang, Shuigen Bian and Shaoping Nie*



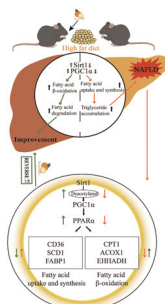
355



The arsenic-lowering effect of inulin-type prebiotics in end-stage renal disease: a randomized crossover trial

Li Li, Jing Zhao, Jinxue Wang, Qianqian Xiong, Xuechun Lin, Xiaolei Guo, Fan Peng, Wangqun Liang, Xuezhi Zuo* and Chenjiang Ying*

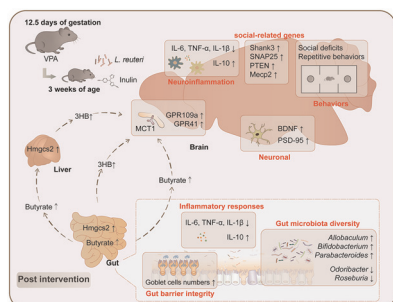
372



The promotion of fatty acid β -oxidation by hesperidin via activating SIRT1/PGC1 α to improve NAFLD induced by a high-fat diet

Tong Nie, Xin Wang, Aqun Li, Anshan Shan and Jun Ma*

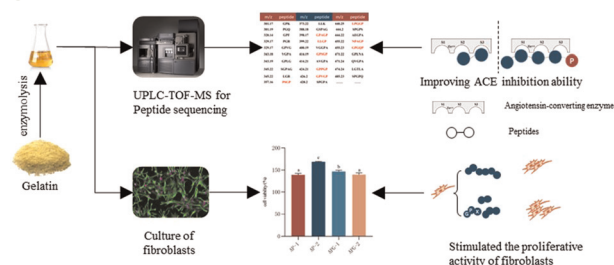
387



A synbiotic formulation of *Lactobacillus reuteri* and inulin alleviates ASD-like behaviors in a mouse model: the mediating role of the gut–brain axis

Chuanchuan Wang, Weixuan Chen, Yishan Jiang, Xiao Xiao, Qianhui Zou, Jiarui Liang, Yu Zhao, Qianxu Wang, Tian Yuan, Rui Guo,* Xuebo Liu* and Zhigang Liu*

401



The targeted development of collagen-active peptides based on composite enzyme hydrolysis: a study on the structure–activity relationship

Xinnuo Hu, Yanjun Yang,* Cuihua Chang,* Junhua Li, Yujie Su and Luping Gu

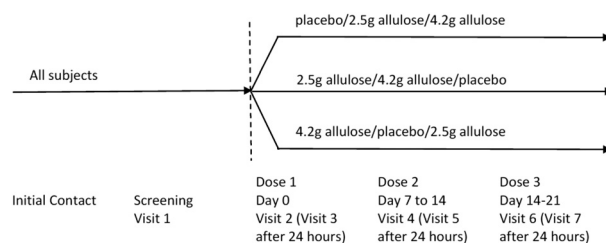


PAPERS

411

Gastrointestinal tolerance of D-allulose in children: an acute, randomised, double-blind, placebo-controlled, cross-over study

Davide Risso,* Gillian DunnGalvin, Sameer Saxena, Andrea Doolan, Lisa Spence and Kavita Karnik



419

Effect of shape, gluten, and mastication effort on *in vitro* starch digestion and the predicted glycemic index of pasta

Xinying Suo, Anna Baggio, Nicoletta Pellegrini, Silvia Vincenzetti and Elena Vittadini*

