

Environmental Science: Atmospheres

rsc.li/esatmospheres

The Royal Society of Chemistry is the world's leading chemistry community. Through our high impact journals and publications we connect the world with the chemical sciences and invest the profits back into the chemistry community.

IN THIS ISSUE

ISSN 2634-3606 CODEN ESANC9 4(3) 285–426 (2024)



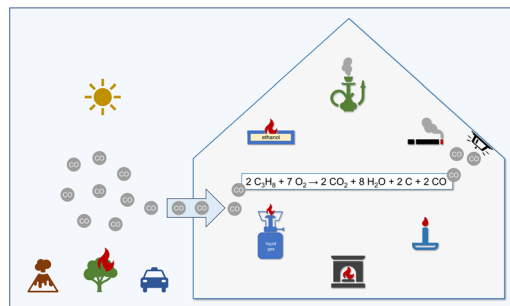
Cover
© Jack Yen Joy
Photography/Getty Images.

CRITICAL REVIEW

291

Carbon monoxide as an indicator of indoor air quality

Tunga Salthammer*



PAPERS

306

Performance of Vehicle Add-on Mobile Monitoring System $\text{PM}_{2.5}$ measurements during wildland fire episodes

Ashley S. Bittner,* Amara L. Holder,
Andrew P. Grieshop, Gayle S. W. Hagler
and William Mitchell



Environmental Science journals

One impactful portfolio for
every exceptional mind

Harnessing the power of interdisciplinary
science to preserve our environment

rsc.li/envsci

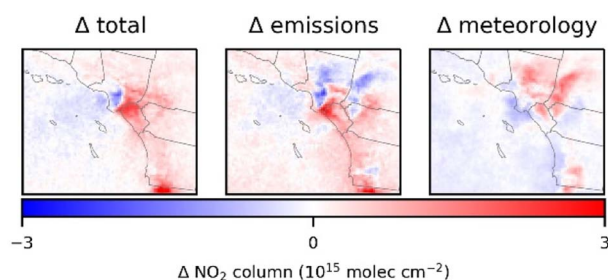
Fundamental questions
Elemental answers



321

Local scale air quality impacts in the Los Angeles Basin from increased port activity during 2021 supply chain disruptions

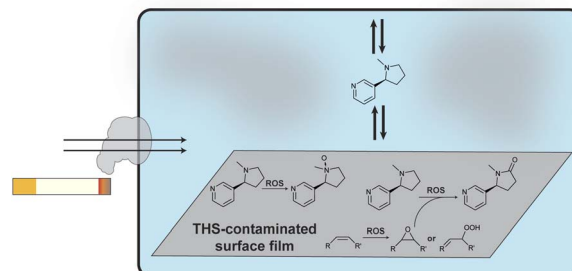
T. Nash Skipper, Jennifer Kaiser, M. Talat Odman, Sina Hasheminassab and Armistead G. Russell*



330

Temporal changes in thirdhand cigarette smoke film composition and oxidation of co-existing surface film chemicals

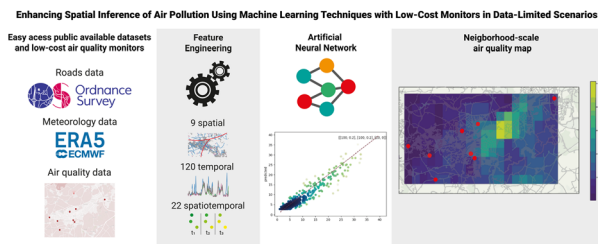
April M. Hurlock and Douglas B. Collins*



342

Enhancing spatial inference of air pollution using machine learning techniques with low-cost monitors in data-limited scenarios

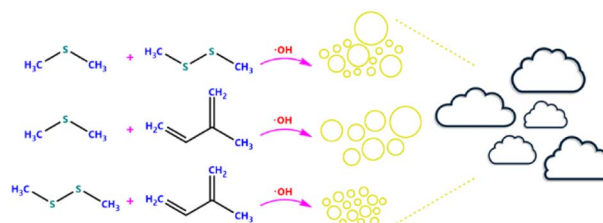
Leonardo Y. Kamigauti,* Gabriel M. P. Perez, Thomas C. M. Martin, Maria de Fatima Andrade and Prashant Kumar



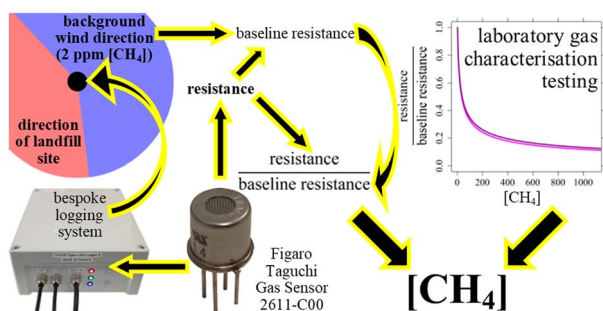
351

Secondary aerosol formation from mixtures of marine volatile organic compounds in a potential aerosol mass oxidative flow reactor

Alexia N. Moore, Lucia Cancelada, Ke'La A. Kimble and Kimberly A. Prather*



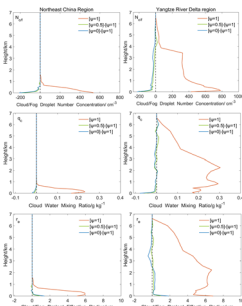
362



Determining methane mole fraction at a landfill site using the Figaro Taguchi gas sensor 2611-C00 and wind direction measurements

Adil Shah,* Olivier Laurent, Grégoire Broquet, Carole Philippon, Pramod Kumar, Elisa Allegrini and Philippe Ciais

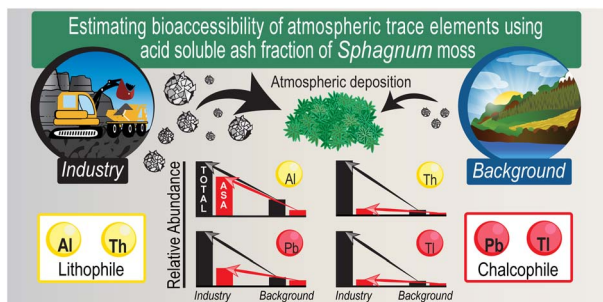
387



Modeling study of the effects of entrainment-mixing on fog simulation in the chemistry–weather coupling model GRAPES_Meso5.1/CUACE CW

Yang Zhao, Hong Wang,* Xiaoqi Xu, Wenjie Zhang, Chen Han, Yue Peng and Chunsong Lu*

408



Estimating the bioaccessibility of atmospheric trace elements within the Athabasca bituminous sands region using the acid soluble ash fraction of *Sphagnum* moss

Na Chen, Fiorella Barraza, René J. Belland, Muhammad B. Javed, Iain Grant-Weaver, Chad W. Cuss and William Shotyk*

