

Cite this: *Digital Discovery*, 2024, 3, 1038Received 15th January 2024  
Accepted 22nd March 2024

DOI: 10.1039/d4dd00023d

rsc.li/digitaldiscovery

# Towards equilibrium molecular conformation generation with GFlowNets†

Alexandra Volokhova,<sup>‡\*</sup> Michał Koziarski,<sup>‡\*</sup> Alex Hernández-García,<sup>‡\*</sup> Cheng-Hao Liu,<sup>b</sup> Santiago Miret,<sup>c</sup> Pablo Lemos,<sup>d</sup> Luca Thiede,<sup>e</sup> Zichao Yan,<sup>a</sup> Alán Aspuru-Guzik<sup>a</sup> and Yoshua Bengio<sup>f</sup>

Sampling diverse, thermodynamically feasible molecular conformations plays a crucial role in predicting properties of a molecule. In this paper we propose to use GFlowNets for sampling conformations of small molecules from the Boltzmann distribution, as determined by the molecule's energy. The proposed approach can be used in combination with energy estimation methods of different fidelity and discovers a diverse set of low-energy conformations for drug-like molecules. We demonstrate that GFlowNets can reproduce molecular potential energy surfaces by sampling proportionally to the Boltzmann distribution.

## 1 Introduction

Molecules exist in the three-dimensional space as a distribution of atomic positions, referred to as conformations. Given the temperature of the system, the probability of each conformation to occur is defined by its formation energy, and follows a Boltzmann distribution.<sup>1</sup> In many computational drug-discovery processes, it is crucial to know the set of most probable, *i.e.* low-energy, conformations to predict properties of interest.<sup>2,3</sup> In addition, exploring the potential energy surface by sampling proportionally to the Boltzmann distribution can give key chemical insights such as transition pathways and electron transfer.<sup>4,5</sup>

Among computational chemistry methods, molecular dynamics simulation is the standard approach, where methods such as CREST have shown feasibility to accurately access numerous low-energy conformations.<sup>6</sup> However, it remains computationally expensive for high throughput applications and large compounds. Faster alternatives with knowledge-based algorithms, such as distance-geometry methods like ETKDG,<sup>7</sup> cannot sample in accordance to the Boltzmann distribution and quickly deteriorate with increasing molecular size.

Machine learning (ML) generative models shown great promise for conformation generation of molecules.<sup>8–10</sup> However, they are traditionally focused on maximum likelihood training

with a fixed dataset, which does not guarantee sampling proportionally to the Boltzmann distribution. Several recent works such as Boltzmann generators are approaching this problem,<sup>10–13</sup> but none of them has yet demonstrated sufficient generality (see Section 2 for more details).

In this paper, we use generative flow networks (GFlowNets) for sampling molecular equilibrium conformations from the Boltzmann distribution. We focus on sampling torsion angles of a molecule, as they contain most of the variance of the conformation space while bond lengths and angles can be efficiently generated by fast rule-based methods. A recent work on continuous GFlowNets<sup>14</sup> presented a proof of concept to demonstrate the capability of GFlowNet to sample from a distribution defined on a two-dimensional torus. Here, we extend this work to a more realistic setting of an arbitrary number of torsion angles. Furthermore, we train GFlowNets with several energy estimation methods of varying fidelity. We experimentally demonstrate that the proposed approach can sample molecular conformations from the Boltzmann distribution, producing diverse, low-energy conformations for a wide range of drug-like molecules with varying number<sup>2–12</sup> of torsion angles.

## 2 Related works

### 2.1 Conventional approaches

The most accurate way to get a set of low-energy conformers is based on molecular-dynamics (MD) simulation,<sup>15</sup> which is a computational method for studying the time evolution of physical systems. This method integrates a Newtonian equation of motion with forces obtained by differentiating the potential energy function of the system and employs metadynamics to discover multiple minima of the energy landscape. However, this accuracy comes with high computational costs, despite simplifications of

<sup>a</sup>Mila, Université de Montréal, Canada. E-mail: alexandra.volokhova@mila.quebec; michal.koziarski@mila.quebec

<sup>b</sup>Mila, McGill University, Canada

<sup>c</sup>Intel Labs, USA

<sup>d</sup>Mila, Université de Montréal, Ciela Institute, Flatiron Institute, Canada

<sup>e</sup>Vector Institute, University of Toronto, Canada

<sup>f</sup>Mila, Université de Montréal, CIFAR Fellow, Canada

† AI for Materials Design Workshop at 37th Conference on Neural Information Processing Systems (Neurips 2023).

‡ Equal contribution.



the energy function, making this method not suitable for high-throughput applications and large molecules.<sup>16</sup>

Alternatively, cheminformatics methods are a fast and popular approach for conformer generation. They utilize structures from experimental reference datasets, chemical rules and heuristics to generate plausible 3D structures given a molecular graph. While significantly faster than MD simulations, these methods tend to lack accuracy and generalization. ETKDG is the most widely used cheminformatics method for conformer generation<sup>7</sup> implemented in the open-source library RDKit. OMEGA<sup>17</sup> is a popular commercial software implementing cheminformatics methods.

## 2.2 Machine learning and reinforcement learning approaches

Several deep learning approaches have been developed for conformer generation. Recent advancements include GeoMol,<sup>8</sup> GeoDiff,<sup>9</sup> and Torsional Diffusion.<sup>10</sup> These methods show good results on the popular benchmark of drug-like molecules GEOM,<sup>16</sup> demonstrating a decent performance and allowing for faster generation than MD simulations. However, a recently proposed simple clustering algorithm on top of the conformations generated by RDKit outperforms many of these approaches.<sup>18</sup> Notably, these machine learning methods are mainly trained for maximizing the likelihood of the conformations present in the training dataset and therefore not suitable for sampling proportionally to the Boltzmann distribution. In contrast, the GFlowNet framework utilizes information about the Boltzmann weights of the conformations by querying the reward function and allows for generating conformations proportionally to the Boltzmann distribution.

Another promising avenue in the realm of conformer generation is the application of machine learning to model the force fields.<sup>19–22</sup> This approach involves training a machine learning model for predicting forces in the system. Then, molecular dynamics equations are unrolled to sample conformations from the local minima of the energy function based on the forces (gradients of the energy) provided by the model. Machine learning models allow for faster computation of the forces giving a speed advantage compared to MD with an energy function based on the first principles. However, molecular dynamics integration with estimated force fields presents significant stability challenges due to the error accumulation during integration,<sup>23</sup> which limits the applicability of this approach.

Reinforcement learning (RL) is another class of machine learning algorithms which cast the generation of molecular structures into a Markov decision process. Well-known examples include TorsionNet<sup>24</sup> which sequentially alters the molecular conformation *via* updating all torsion angles at every step. The algorithm employs proximal policy optimization<sup>25</sup> and learns by querying a force-fields energy estimation. While TorsionNet and other RL methods do not rely on existing molecular conformation dataset—a setup similar to our method—they lack the theoretical guarantee of exploring the broader ensemble space of molecular conformation, and indeed,<sup>26</sup> shows that they fail at recovering a diverse set of conformations.

## 2.3 Boltzmann generators

A closely relevant direction of work is Boltzmann generators<sup>11,12</sup> – machine learning models aimed at generating samples from the Boltzmann distribution. Many of the existing approaches are based on normalising flows,<sup>11,12</sup> which are known to have limited expressivity and require training a separate model for each molecular graph. The torsional diffusion model<sup>10</sup> incorporated annealed importance sampling into the training of the diffusion model allowing for sampling from the target distribution. However, importance sampling brings additional variance into the gradients and becomes challenging with higher dimensions which limits applicability of this approach. Recent work by<sup>13</sup> also attempted to make diffusion models sample from the Boltzmann distribution. Authors pretrained the score model, constraining it to both follow the Fokker–Plank equation and match the energy gradient and then trained it on the dataset of conformations with the standard maximum-likelihood objective. This approach allows to incorporate information about energies into the model but does not have theoretical guarantees for sampling from the Boltzmann distribution. Another recent approach<sup>27</sup> approximates Boltzmann distribution as a product of independent distributions for each intrinsic coordinate (a mixture of von-Mises distribution for each torsion angle, unimodal Gaussian distribution for bond lengths and angles). This work shows promising results on the molecules with up to 64 atoms, but the independence assumption can be limiting for modeling larger molecules with long-range interactions.

## 3 GFlowNet for conformation generation

GFlowNets were originally introduced as a learning algorithm for amortized probabilistic inference in high-dimensional discrete spaces<sup>28</sup> and a generalisation to continuous or hybrid spaces was recently introduced.<sup>14</sup> The method is designed for sampling from an unnormalised probability density which is often represented as a reward function  $R(x)$  over the sample space  $x \in X$ .

As shown in Fig. 1, the sampling process starts from a source state  $s_0$  and continues with a trajectory of sequential updates  $\tau = (s_0 \rightarrow s_1 \rightarrow \dots \rightarrow s_n = x)$  according to a trainable forward policy  $p_F(s_t|s_{t-1}; \theta)$ , which defines probability of the forward transition  $s_{t-1} \rightarrow s_t$ . Once the termination transition  $s_{n-1} \rightarrow x$  is sampled, the reward function  $R(x)$  provides a signal for computing the training objective. In addition to the trainable forward policy, GFlowNet can learn a backward policy  $p_B(s_{t-1}|s_t; \theta)$  for modelling the probability of the backward transitions  $s_t \rightarrow s_{t-1}$ . It gives additional flexibility to the forward policy  $p_F$  allowing to model a rich family of distributions over  $X$ .

In this paper, we propose the use of GFlowNets as a generative model to sample molecular conformations in the space of torsion angles. Formally, we can describe the space of  $d$  torsion angles of a molecule as the hyper-torus defined in  $X = [0, 2\pi)^d$ . To sample trajectories  $\tau$  with GFlowNets that satisfy the



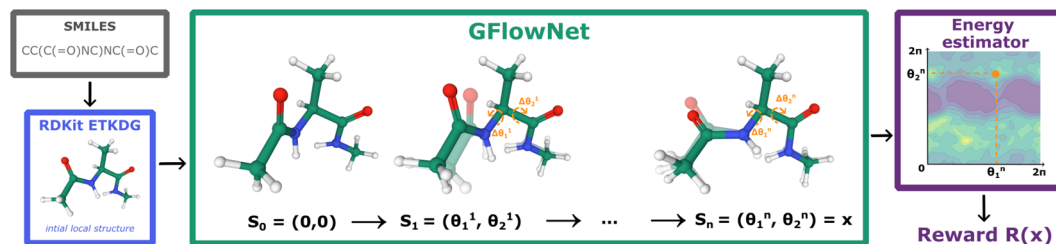


Fig. 1 GFlowNet for molecular conformation generation. First, RDKit samples the initial conformation given the molecular graph encoded as a SMILES string. Then, we fix bond lengths and angles and set initial values of rotatable torsion angles to zero. Finally, GFlowNet sequentially updates rotatable torsion angles providing the final sample according to the Boltzmann reward (eqn (2)).

required theoretical assumptions,<sup>14</sup> we establish a fixed number of steps  $n$  and include the step number into the state. This yields a state space  $S = \{s_0\} \cup [0, 2\pi]^d \times \{1, 2, \dots, n\}$ . In order to learn expressive distributions on the hyper-tori, we parameterized independently the forward and backward policies  $p_F$  and  $p_B$  and trained the GFlowNets with the Trajectory Balance objective<sup>29</sup> defined as:

$$L_{TB}(\tau; \theta) = \left( \log \frac{Z_\theta \prod_{t=1}^n p_F(s_t | s_{t-1}; \theta)}{R(s_n) \prod_{t=1}^n p_B(s_{t-1} | s_t; \theta)} \right)^2. \quad (1)$$

In eqn (1),  $Z_\theta$  is the (trainable) partition function and  $R(s_n)$  is the reward function, evaluated on the terminating states of the trajectories,  $s_n = x \in X$ .

Both forward and backward policies are parameterized with a multilayer perceptron (MLP) which outputs parameters for a mixture of von Mises distribution. Note that in this setting we need to train an individual GFlowNet for every molecule as different molecules may have different numbers of torsion angles. We discuss possibility to generalise this approach in the Section 5.

In order to sample from the Boltzmann distribution, we define the reward function using the energy of the molecular conformation in the following way:

$$R(x) = e^{-E(C(x))\beta}, \quad (2)$$

where  $E(C(x))$  is the potential energy of the molecular conformation  $C(x)$  in vacuum and  $C(x)$  is defined by the sampled torsion angles  $x$ . Other parameters of the conformation  $C$  such as bond lengths and angles are sampled with RDKit ETKDG<sup>7</sup> and fixed during the GFlowNet training. The positive scalar  $\beta$  corresponds to the inverse temperature of the molecule, but we treat it as a hyper-parameter of the method for the scope of this work.

The energy function is computed as an approximation of quantum mechanical density-functional theory (DFT) and we consider several estimators of different fidelity in our experiments. We use the molecule's potential energy in vacuum for the scope of our work, but the method can be applied to any energy function of interest.

## 4 Empirical evaluation

We conducted an experimental study aimed at addressing several research questions: whether the proposed approach can sample conformations proportionally to the Boltzmann distribution; its capacity to generate diverse low-energy conformations; and how the choice of the energy estimator impacts the performance. Additionally, we examined how the proposed approach scales with an increasing number of torsion angles. Firstly, we conducted experiments on molecules with only two considered torsion angles to perform a more in-depth analysis of the results which was not possible in higher dimensions. Then, we scaled up our study, considering a broader range of molecules with varying numbers of torsion angles. Training details can be found in Appendix A.1.

### 4.1 Set-up

Conformation generation is conditioned for an input molecular graph encoded as a SMILES string. We first process SMILES with RDKit library<sup>30</sup> which uses ETKDG to generate an initial conformation. This defines bond lengths and angles and non-rotatable torsion angles. Then, GFlowNet generates rotatable torsion angles and their values are updated accordingly in the conformation (see Fig. 1).

**4.1.1 Energy estimation.** We consider a representative set the existing approaches to energy estimation with different trade-offs between accuracy and computational costs. The most accurate of the considered methods is a semiempirical quantum chemical method, GFN2- $\chi$ TB,<sup>31</sup> which is designed for estimating energies of molecular systems for accurate conformation generation. We also employ a faster and less precise force-field approach, GFN-FF.<sup>32</sup> Finally, we consider TorchANI,<sup>33</sup> which implements a neural network potential called ANI<sup>34</sup> for energy estimation of organic molecules. Its computational cost is comparable to GFN-FF, but applicability is limited to the specific domain of molecules it was trained on.

**4.1.2 Data.** In the two-dimensional setting, we used alanine dipeptide, ibuprofen and ketorolac molecules. All of them have two main torsion angles largely affecting their energy. For experiments with multiple torsion angles, we used molecules from the GEOM-DRUGS dataset,<sup>16</sup> a popular benchmark containing low-energy conformations of 304k drug-like molecules, which were generated with meta-dynamics simulation of



potential energy estimated by GFN2-xTB.<sup>6</sup> The average number of rotatable torsion angles for GEOM-DRUGS molecules is 7.9 and 92.8% of them have less than 13 rotatable torsion angles (Appendix A.2).

**4.1.3 Non-rotatable torsion angles.** Torsion angles between the triplets of adjacent bonds defines the shape of the molecule together with bond lengths and angles. Due to the chemical constraints, some torsion angles do not vary between different conformations and can be accurately identified from a SMILES string by rule-based methods together with the bond lengths and angles.<sup>7</sup> Specifically, torsion angles corresponding to non-single bonds and torsion angles within the rings are considered as non-rotatable. In our study we kept these torsion angles fixed and did not sample them with the GFlowNet.

## 4.2 Two-dimensional setting

We begin by investigating the performance of GFlowNet in simple, well-studied molecular systems in two dimensions: alanine dipeptide, ibuprofen, and ketorolac.<sup>35,36</sup> In this experiment, we aim to assess how well the proposed approach can

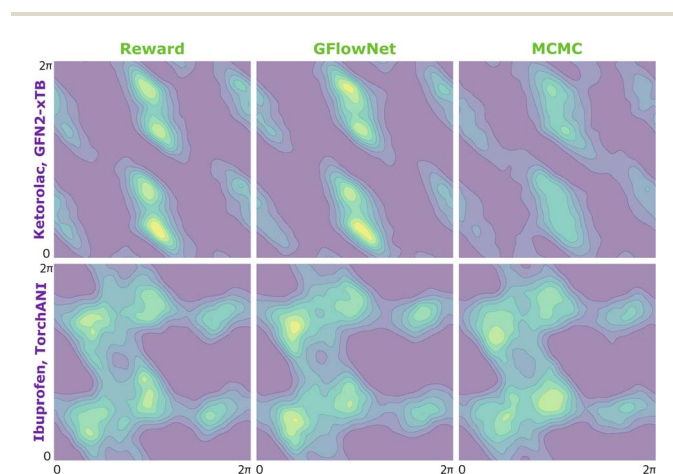


Fig. 2 KDE on samples from the reward function (left), GFlowNet (centre) and MCMC (right) for two molecules and two different proxies: ketorolac from GFN2-xTB (top) and ibuprofen from TorchANI (bottom).

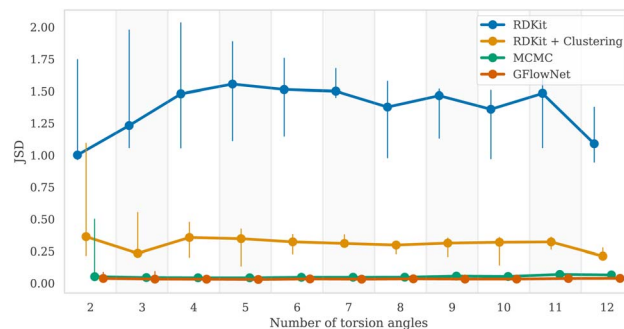


Fig. 4 Estimated Jensen–Shannon divergence (JSD) (lower is better) between Boltzmann distribution (with GFN2-xTB energy function) and distributions of samples from GFlowNet and other methods. The markers indicate the median out of five molecules and the vertical lines show the range between minimum and maximum values.

learn to sample from the target distribution and analyze the impact of the energy estimator.

The low dimensionality allows us to visualize the kernel density estimation and evaluate the performance numerically using an unbiased estimation of the Jensen–Shannon divergence (JSD). We used nested sampling<sup>37</sup> to produce reference ground-truth energy surfaces, and compared the proposed approach with MCMC as an example of an unamortized method for sampling from an unnormalized probability distribution.

In Fig. 2, we present the obtained potential energy surfaces of ketorolac and ibuprofen. Comparable analysis for all three molecules and proxies, as well as the computed JSD values, can be found in Appendix A.5 Fig. 8–10 and Table 1. As can be seen, while the choice of the energy estimator can influence the overall shape of the energy surface, both considered methods accurately reproduce the ground truth energy surface for all estimators. Interestingly, GFlowNet outperformed MCMC in some cases, producing energy surfaces more closely resembling the ground truth.

## 4.3 Scaling to multiple torsion angles

We then examined a setting with a higher number of torsion angles, up to 12. For each number of torsion angles we selected 5

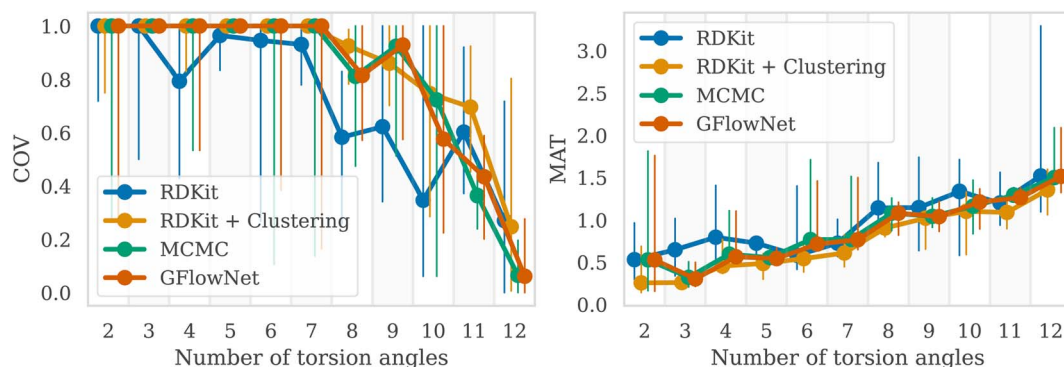


Fig. 3 COV (higher is better) and MAT (lower is better) metrics for samples from GFlowNet, RDKit, RDKit + clustering, MCMC. The markers indicate the median out of five molecules and the vertical lines the range between minimum and maximum values.





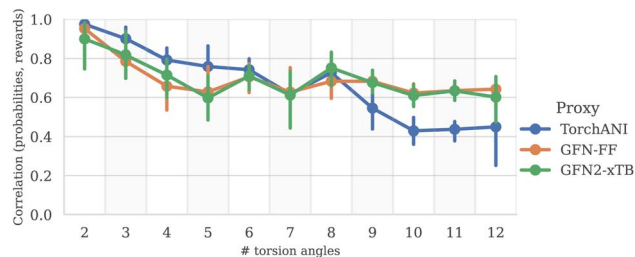


Fig. 5 Correlation between estimated sample probability and its reward, as a function of the number of torsion angles (higher is better).

different molecules from the GEOM-Drugs dataset, and trained GFlowNet using GFN2- $\chi$ TB energy estimator separately for each one of them. We compared our method with several baselines: MCMC, RDKit ETKDG,<sup>7</sup> as well as a recent approach combining ETKDG with clustering,<sup>18</sup> which has shown to outperform many of the existing machine learning methods in the low energy conformation generation task. Note that both ETKDG-based approaches perform a qualitatively different task of generating optimized, low-energy conformers, whereas GFlowNet and MCMC aim at sampling from the underlying Boltzmann distribution. In this experiment, we investigate whether diverse low-energy conformations are present among the GFlowNet samples.

In Fig. 3, we report the COV and MAT metrics (Appendix A.3.1), which evaluate the proportion of the reference conformations among samples (COV) and the proximity of the sampled conformations to the reference ones (MAT). We use a set of 1000 generated conformations for all methods to compute the metrics. We repeated experiment five times with different molecules for each number of torsion angles. As can be seen, GFlowNet outperforms vanilla RDKit, and achieves performance comparable to MCMC and RDKit-clustering, indicating that it can sample low-energy conformations that closely match the ground-truth dataset. In this experiment, both GFlowNet and MCMC use GFN2- $\chi$ TB energy estimator.

#### 4.4 Sampling from the Boltzmann distribution

To measure the discrepancy between model sampling distribution and the target distribution, we estimated Jensen-Shannon divergence (JSD) between sampling and Boltzmann distribution given by GFN2- $\chi$ TB energy function (see Appendix A.3.2 for more details). As one can see from the Fig. 4 and 6, both GFlowNet and MCMC samples are much closer to the Boltzmann distribution compared to RDKit and RDKit + clustering methods. In this experiment, both GFlowNet and MCMC use GFN2- $\chi$ TB energy estimator.

Finally, to provide additional evaluation of GFlowNet's scalability to higher dimensions, we examined the correlation between the estimated probability to sample a conformation with a GFlowNet (Appendix A.4) and its energy. We performed this analysis for GFlowNet exclusively because other methods do not provide a straightforward way for estimating sample probability. For the sake of this comparison, we considered all TorchANI, GFN-FF and GFN2- $\chi$ TB energy estimators. The results are presented in Fig. 5. As can be seen, while the correlation declines with the increasing number of torsion angles, it remains relatively high throughout the considered range, serving as a further indication that the proposed approach sample according to the Boltzmann distribution in the high dimensions. Interestingly, the higher correlation in higher dimensions with GFN2- $\chi$ TB and GFN-FF may suggest that their energy landscape is easier to learn than TorchANI, possibly because of the more accurate modelling of the energy surface.

## 5 Discussion and future work

In this paper, we have proposed a method for sampling molecular conformations using GFlowNet, which samples proportionally to the Boltzmann distribution. We experimentally evaluated the proposed approach and demonstrated that it can sample diverse, low-energy conformations, can be used in combination with energy estimators of different fidelity, and scales well to a higher number of torsion angles.

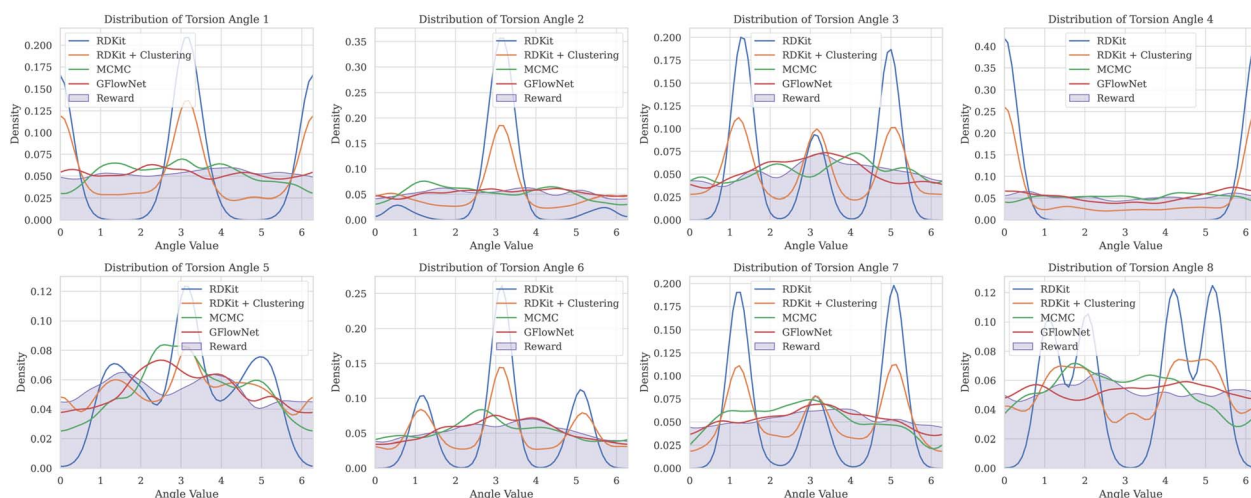


Fig. 6 Marginal distributions over the torsion angles for O=C1Coc2ccc(C(=O)COC(=O)CCSc3ccccc3)cc2N1 molecule. Notably, GFlowNet and MCMC distributions are much closer to the reward distribution compared to other methods.



While the proposed method still requires training individually for every molecule, the described work can be treated as a stepping stone towards developing a generalised GFlowNet model, which could be trained on a large data set of molecules and sample torsion angles for an arbitrary molecule conditioned on its molecular graph. This can potentially allow us to amortize the computational costs of sampling proportionally to the Boltzmann distribution.

## Code and data availability

The code used to carry out the experiments of this paper, alongside with instructions for their reproduction, is open-sourced and available on the GitHub repository <https://github.com/GFNORG/conf-gfn>. The GEOM dataset used in this work is publicly available at <https://github.com/learningmatter-mit/geom>.

## Conflicts of interest

The authors declare no conflicts of interests relevant to this research.

## A Appendix

### A.1 Experimental details

**A.1.1 Energy computation.** We performed energy normalization and clamping for all of the considered energy estimation methods to facilitate training of the model. Specifically, for every molecule we computed 10 000 random conformations, based on them estimated the minimum and maximum energy values, and normalized all of the estimated energy values to a [0; 1] range. Furthermore, to remove outliers we clamped the values between 1st and 99th quantile of the energy values observed in the initial random sample.

**A.1.2 GFlowNet training.** GFlowNet used separate MLP for forward and backward policy, both consisting of 5 hidden layers with 512 neurons each, and using leaky ReLU activation function. Policy input torsion angles vector was modified using positional encoding, with every torsion angle encoded by 10 different values using trigonometric functions. Policy output consisted of predicted von Mises distribution parameters, with 5 separate components per torsion angle. Trajectories of length 5 were used, meaning that every sample was constructed by making 5 separate steps, sampled from the predicted distribution parameters. Minimum concentration of 4 was used for the von Mises distribution. GFlowNet was trained using Boltzmann reward function with  $\beta = 32$ . Training of a single molecule lasted 40 000 iterations, and used Adam optimizer with learning rate of 0.0001 for the policy and 0.01 for  $Z_\theta$ . Batches consisted of 80 on-policy trajectories with probability of random sampling equal to 0.1, and 20 trajectories from replay buffer of best trajectories seen so far, with a total buffer capacity of 1000.

**A.1.3 MCMC sampling.** For the Markov-Chain Monte Carlo (MCMC) experiments, we run a Metropolis-Hastings algorithm, with a self-tuning covariance matrix for the proposal step. We use the publicly available Cobaya implementation.<sup>38,39</sup> We use 4 randomly initialized walkers, and run until reaching a Gelman-

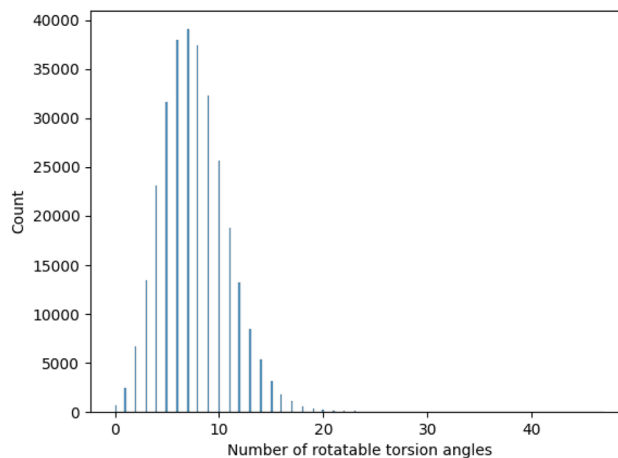


Fig. 7 Distribution of torsion angles for molecules in GEOM-DRUGS.

Rubin<sup>40</sup> statistic  $R - 1 < 0.01$ . We then burn-in the first 20% of the chains, and randomly select 1000 samples from the remaining set.

### A.2 GEOM-DRUGS torsion angle distribution

One important consideration for the experimental study was the range of evaluated torsion angles. To choose an appropriate range we analysed the distribution of torsion angles for molecules contained in GEOM-DRUGS, as presented in Fig. 7. As can be seen, the considered range of 2 to 12 torsion angles faithfully represents the dataset, with majority of molecules contained in it.

### A.3 Evaluation

**A.3.1 COVMAT metrics.** Root Mean Square Deviation (RMSD) is a metric for evaluating the difference between 3D positions of two conformations, typically computed after first aligning the molecules using a function  $\Phi$ . Formally, for two molecules  $\mathbf{R}$ ,  $\hat{\mathbf{R}}$  it can be defined as:

$$\text{RMSD}(\mathbf{R}, \hat{\mathbf{R}}) = \min_{\phi} \left( \frac{1}{n} \sum_{i=1}^n \|\Phi(\mathbf{R}_i) - \hat{\mathbf{R}}_i\|^2 \right)^{\frac{1}{2}} \quad (3)$$

Coverage (COV) and matching (MAT) are two metrics incorporating RMSD. Given a set of reference low-energy conformations  $S_r$ , they measure to what extent generated samples  $S_g$  cover the reference dataset (COV), and how closely do they resemble the reference conformations (MAT):

$$\text{COV}(S_g, S_r) = \frac{|\{\mathbf{R} \in S_r \mid \text{RMSD}(\mathbf{R}, \hat{\mathbf{R}}) < \delta, \hat{\mathbf{R}} \in S_g\}|}{|S_r|}, \quad (4)$$

$$\text{MAT}(S_g, S_r) = \frac{1}{|S_r|} \sum_{\mathbf{R} \in S_r} \min_{\hat{\mathbf{R}} \in S_g} \text{RMSD}(\mathbf{R}, \hat{\mathbf{R}}). \quad (5)$$

Note that COVMAT metrics were traditionally used in the task of low-energy molecular conformation generation, with the assumption that all the generated conformations  $S_g$  are designed to closely approximate the local energy optima. This does not hold



when sampling from Boltzmann distribution, and can produce unfavourable results. Because of that we adjusted the procedure by sampling more conformations than typically seen in the literature, as described in the main text.

We follow the literature<sup>18,22,41</sup> and set  $\delta$  to 1.25 Å in our experiments.

**A.3.2 JSD estimation.** Estimating Jensen–Shannon divergence (JSD) between target  $q(x)$  and sampled  $p(x)$  distribution in high dimensions  $x \in X = [0, 2\pi]^d$  is computationally expensive. Therefore, we estimated JSD separately for each marginal distribution of a torsion angle and then took the average.

For estimating marginal JSD, we first discretized each dimension into  $K$  bins. Then, we sampled  $M$   $d$ -dimensional vectors of torsion angles from the uniform distribution over  $X$ . Then, we computed their Boltzmann weights  $w(x) = \exp(-\varepsilon(C(x))\beta)$  and used them to estimate Boltzmann probability for each bin:

$$q_k = \frac{1}{MC} \sum_{i=1}^M w(x_i) [x_i \in \text{bin}_k] \quad (6)$$

where  $C = \frac{1}{M} \sum_{i=1}^M w(x_i)$  and the indicator function [condition] = 1 when condition is true and [condition] = 0 otherwise. After that, we sampled  $M$  samples from the model and estimated sampling probability in each bin as a standard histogram:

$$p_k = \frac{1}{M} \sum_{i=1}^M [x_i \in \text{bin}_k] \quad (7)$$

Finally we computed discrete marginal JSD using estimated  $q_k$  and  $p_k$ :

$$\text{JSD}_{\text{marginal}} \approx \frac{1}{2} \sum_{k=1}^K q_k \log \left( \frac{2q_k}{p_k + q_k} \right) + \frac{1}{2} \sum_{k=1}^K p_k \log \left( \frac{2p_k}{p_k + q_k} \right) \quad (8)$$

And took the average over dimensions

$$\text{JSD}(q||p) \approx \frac{1}{d} \sum_{j=1}^d \text{JSD}_{\text{marginal}_j} \quad (9)$$

In our analysis, we used  $M = 1000$  and  $K = 25$ . Note that this estimation is biased as in practice torsion angles are not independent from each other.

#### A.4 Estimation of the log-likelihood of sampling a terminating state $x$

The log-probability of sampling a terminating state  $x$  according to the GFlowNet policy  $\pi(x)$  can be expressed as follows:

$$\log \pi(x) = \log \int_{\tau: s_{|\tau|-1} \rightarrow x \in \tau} \prod_{t=0}^{|\tau|-1} P_F(s_{t+1} | s_t; \theta) d\tau = \log \int_{\tau: x \in \tau} P_F(\tau) d\tau.$$

Note that we simplify notation in favour of readability in the domain of the integral of the right-most equation, which should be identical to the previous integral's. While computing the

integral (or even the corresponding sum, if the state space is discrete but very large) in the above expression is intractable in general, we can efficiently estimate it with importance sampling, by using the backward transition probability distribution  $P_B(\tau|x)$  as the importance proposal distribution. Let us recall the core aspects of importance sampling, which is a kind of Monte Carlo simulation method.

Monte Carlo simulation methods can be used to estimate integrals  $I(f) = \int_{\tau: x \in \tau} f(\tau) p(\tau) d\tau$ , as well as very large sums, by drawing  $N$  independent and identically distributed (i.i.d.) samples  $\{\tau^{(i)}\}_{i=1}^N$  and computing an estimate  $I_N(f) = \frac{1}{N} \sum_{i=1}^N f(\tau^{(i)})$  which converges to  $I(f)$  as  $N \rightarrow \infty$ . Importance sampling introduces an importance proposal distribution  $q(\tau)$  whose support includes the support of the target distribution  $p(\tau)$ , such that we can express the integral  $I(f)$  as an expectation over the proposal distribution:

$$I(f) = \int_{\tau: x \in \tau} f(\tau) \frac{p(\tau)}{q(\tau)} q(\tau) d\tau = \mathbb{E}_{q(\tau)} \left[ f(\tau) \frac{p(\tau)}{q(\tau)} \right]$$

By drawing  $N$  i.i.d. samples from the proposal distribution  $q(\tau)$  we can compute the estimate

$$\hat{I}_N(f) = \frac{1}{N} \sum_{i=1}^N f(\tau^{(i)}) \frac{p(\tau^{(i)})}{q(\tau^{(i)})}.$$

Returning to the original problem of estimating the log-probability of sampling  $x$  with a GFlowNet, we have that the target density is the forward transition probability distribution ( $p(\tau) = P_F(\tau)$ ), the importance proposal distribution is the backward transition probability distribution given  $x$  ( $q(\tau) = P_B(\tau|x)$ ), and the function under the integral is simply one ( $f(\tau) = 1$ ). Therefore:

$$\log \hat{\pi}(x) = \log \frac{1}{N} \sum_{i=1}^N \frac{P_F(\tau^{(i)})}{P_B(\tau^{(i)}|x)} = \log \sum_{i=1}^N \frac{P_F(\tau^{(i)})}{P_B(\tau^{(i)}|x)} - \log N. \quad (10)$$

#### A.5 Two-dimensional results

This section presents additional results for the experiments in section 4.2. The JSD metric reported here is estimated differently from the Section 4.4. and Appendix A.3.2. Here, it was possible to compute an unbiased estimation of the JSD due to

**Table 1** JSD between model sample distribution and reward distribution in the two-dimensional setting (two torsion angles are rotatable). For each proxy and molecule, we compare GFlowNet performance with MCMC and show the best value in bold

Method	Proxy	Alanine dipeptide	Ibuprofen	Ketorolac
MCMC	TorchANI	<b>0.0056</b>	<b>0.0055</b>	0.0172
	GFN-FF	<b>0.0076</b>	<b>0.0175</b>	0.0123
	GFN2-xTB	0.0090	<b>0.0074</b>	0.0143
GFlowNet	TorchANI	0.0077	<b>0.0055</b>	<b>0.0070</b>
	GFN-FF	0.0166	0.0182	<b>0.0078</b>
	GFN2-xTB	<b>0.0073</b>	0.0075	<b>0.0059</b>





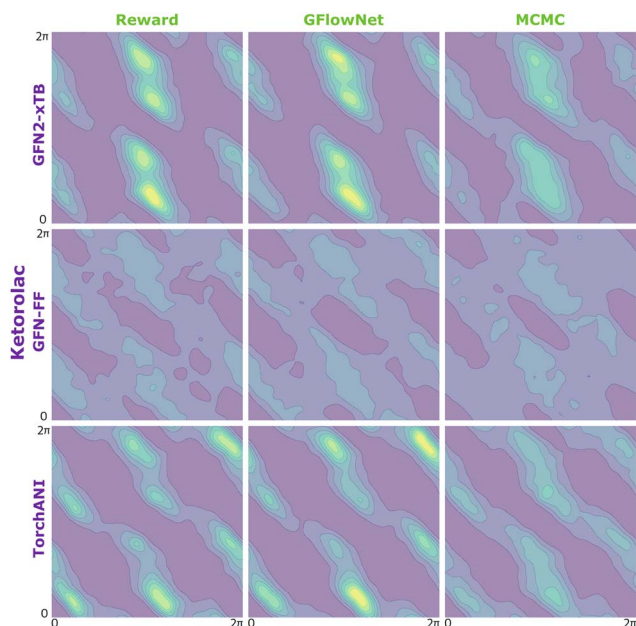


Fig. 8 KDE on samples from the reward function (left) GFlowNet (centre) and MCMC (right) for ketorolac for the three proxies: GFN2-xTB (top), GFN-FF (middle) and TorchANI (bottom).

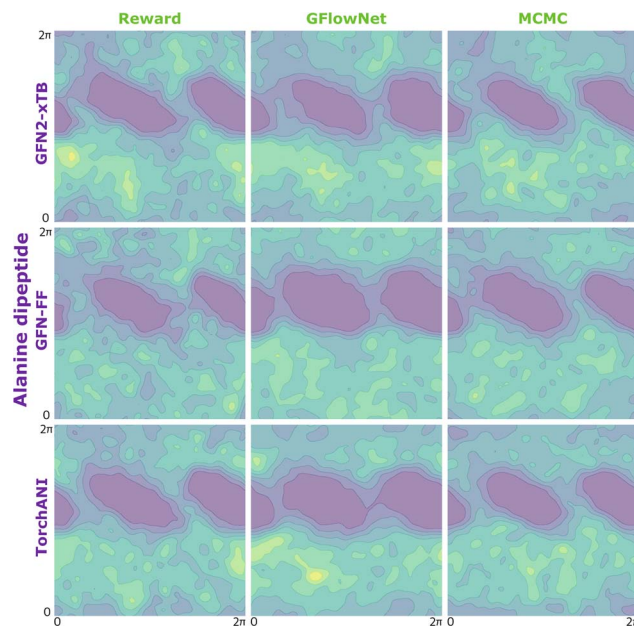


Fig. 10 KDE on samples from the reward function (left) GFlowNet (centre) and MCMC (right) for alanine dipeptide for the three proxies: GFN2-xTB (top), GFN-FF (middle) and TorchANI (bottom).

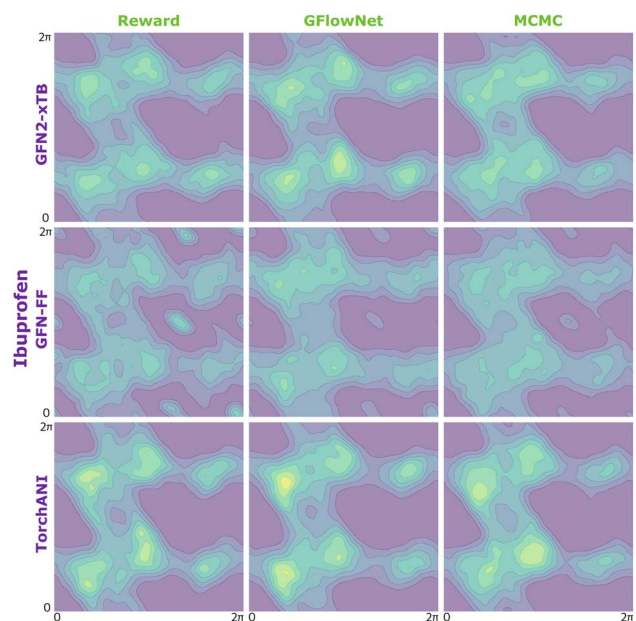


Fig. 9 KDE on samples from the reward function (left) GFlowNet (centre) and MCMC (right) for ibuprofen for the three proxies: GFN2-xTB (top), GFN-FF (middle) and TorchANI (bottom).

the low dimensionality of the problem. First, we computed kernel density estimation (KDE) on the samples from the model and on the samples from the reward distribution drawn with rejection sampling. Then, we used the obtained KDEs to compute probabilities on a dense grid of torsion angles in the interval  $[0, 2\pi)$ . Finally, we computed discrete JSD using the probabilities of the points on the grid.

## Acknowledgements

We thank Léna Néhale-Ezzine and Prudencio Tossou for their contributions to our discussions. We thank Will Hua for his contribution in the code development at the initial stages of the project. We acknowledge computational support from Intel Labs and Mila compute resources for necessary experiments. We acknowledge Mila's IDT team support. We would like to express our gratitude to the CIFAR (Canadian Institute for Advanced Research), IVADO-PRF3; Genetech-Mila partnership; Amgen-Mila partnership and Intel-Mila partnership for their generous support in funding this research project. Cheng-Hao Liu thanks Vanier Scholarship for supporting their work in this project. In addition, we acknowledge material support from NVIDIA Corporation in the form of computational resources.

## References

- 1 D. A. McQuarrie and J. D. Simon, *Physical Chemistry: A Molecular Approach*, University Science Books, Sausalito, CA, 1997, ch. 17.
- 2 D. D. Boehr, R. Nussinov and P. E. Wright, The role of dynamic conformational ensembles in biomolecular recognition, *Nat. Chem. Biol.*, 2009, 5(11), 789–796.
- 3 O. Trott and A. J. Olson, AutoDock Vina: Improving the speed and accuracy of docking with a new scoring function, efficient optimization, and multithreading, *J. Comput. Chem.*, 2010, 31(2), 455–461. Available from: <https://onlinelibrary.wiley.com/doi/abs/10.1002/jcc.21334>.
- 4 H. B. Schlegel, Exploring potential energy surfaces for chemical reactions: An overview of some practical methods, *J. Comput. Chem.*, 2003, 24(12), 1514–1527.





- Available from: <https://onlinelibrary.wiley.com/doi/abs/10.1002/jcc.10231>.
- 5 A. C. Benniston and A. Harriman, Charge on the move: how electron-transfer dynamics depend on molecular conformation, *Chem. Soc. Rev.*, 2006, **35**, 169–179, DOI: [10.1039/B503169A](https://doi.org/10.1039/B503169A).
  - 6 P. Pracht, F. Bohle and S. Grimme, Automated exploration of the low-energy chemical space with fast quantum chemical methods, *Phys. Chem. Chem. Phys.*, 2020, **22**, 7169–7192, DOI: [10.1039/C9CP06869D](https://doi.org/10.1039/C9CP06869D).
  - 7 S. Riniker and G. A. Landrum, Better informed distance geometry: using what we know to improve conformation generation, *J. Chem. Inf. Model.*, 2015, **55**(12), 2562–2574.
  - 8 O. Ganea, L. Pattanaik, C. Coley, R. Barzilay, K. Jensen, W. Green, *et al.*, Geomol: Torsional geometric generation of molecular 3d conformer ensembles, *Adv. Neural Inf. Process. Syst.*, 2021, **34**, 13757–13769.
  - 9 M. Xu, L. Yu, Y. Song, C. Shi, S. Ermon and J. Tang, Geodiff: A geometric diffusion model for molecular conformation generation, *arXiv*, 2022, preprint, arXiv:220302923, DOI: [10.48550/arXiv.2203.02923](https://doi.org/10.48550/arXiv.2203.02923).
  - 10 B. Jing, G. Corso, J. Chang, R. Barzilay and T. Jaakkola, Torsional diffusion for molecular conformer generation, *Adv. Neural Inf. Process. Syst.*, 2022, **35**, 24240–24253.
  - 11 F. Noé, S. Olsson, J. Köhler and H. Wu, Boltzmann generators: Sampling equilibrium states of many-body systems with deep learning, *Science*, 2019, **365**(6457), eaaw1147.
  - 12 J. Köhler, A. Krämer and F. Noé, Smooth normalizing flows, *Adv. Neural Inf. Process. Syst.*, 2021, **34**, 2796–2809.
  - 13 S. Zheng, J. He, C. Liu, Y. Shi, Z. Lu, W. Feng, *et al.*, Towards Predicting Equilibrium Distributions for Molecular Systems with Deep Learning, *arXiv*, 2023, preprint, arXiv:230605445, DOI: [10.48550/arXiv.2306.05445](https://doi.org/10.48550/arXiv.2306.05445).
  - 14 S. Lahlou, T. Deleu, P. Lemos, D. Zhang, A. Volokhova, A. Hernández-García, *et al.*, A theory of continuous generative flow networks, In *International Conference on Machine Learning*, PMLR, 2023, pp. 18269–18300.
  - 15 P. Pracht, F. Bohle and S. Grimme, Automated exploration of the low-energy chemical space with fast quantum chemical methods, *Phys. Chem. Chem. Phys.*, 2020, **22**(14), 7169–7192.
  - 16 S. Axelrod and R. Gomez-Bombarelli, GEOM, energy-annotated molecular conformations for property prediction and molecular generation, *Sci. Data*, 2022, **9**(1), 185.
  - 17 P. C. Hawkins, A. G. Skillman, G. L. Warren, B. A. Ellingson and M. T. Stahl, Conformer generation with OMEGA: algorithm and validation using high quality structures from the Protein Databank and Cambridge Structural Database, *J. Chem. Inf. Model.*, 2010, **50**(4), 572–584.
  - 18 G. Zhou, Z. Gao, Z. Wei, H. Zheng and G. Ke, Do Deep Learning Methods Really Perform Better in Molecular Conformation Generation?, *arXiv*, 2023, preprint, arXiv:230207061, DOI: [10.48550/arXiv.2302.07061](https://doi.org/10.48550/arXiv.2302.07061).
  - 19 J. Wang, S. Olsson, C. Wehmeyer, A. Pérez, N. E. Charron, G. De Fabritiis, *et al.*, Machine learning of coarse-grained molecular dynamics force fields, *ACS Cent. Sci.*, 2019, **5**(5), 755–767.
  - 20 M. Arts, V. G. Satorras, C. W. Huang, D. Zuegger, M. Federici, C. Clementi, *et al.*, Two for one: Diffusion models and force fields for coarse-grained molecular dynamics, *arXiv*, 2023, preprint, arXiv:230200600, DOI: [10.48550/arXiv.2302.00600](https://doi.org/10.48550/arXiv.2302.00600).
  - 21 P. Thölke and G. De Fabritiis, Equivariant transformers for neural network based molecular potentials, in *International Conference on Learning Representations*, 2021.
  - 22 C. Shi, S. Luo, M. Xu and J. Tang, Learning gradient fields for molecular conformation generation, in *International conference on machine learning*, PMLR, 2021, pp. 9558–9568.
  - 23 X. Fu, Z. Wu, W. Wang, T. Xie, S. Ketten, R. Gomez-Bombarelli, *et al.*, Forces are not enough: Benchmark and critical evaluation for machine learning force fields with molecular simulations, *arXiv*, 2022, preprint, arXiv:221007237, DOI: [10.48550/arXiv.2210.07237](https://doi.org/10.48550/arXiv.2210.07237).
  - 24 T. Gogineni, Z. Xu, E. Punzalan, R. Jiang, J. Kammeraad, A. Tewari, *et al.*, Torsionnet: A reinforcement learning approach to sequential conformer search, *Adv. Neural Inf. Process. Syst.*, 2020, **33**, 20142–20153.
  - 25 J. Schulman, F. Wolski, P. Dhariwal, A. Radford and O. Klimov, Proximal Policy Optimization Algorithms, *CoRR*, 2017, 06347.
  - 26 Y. Patel and A. Tewari, RL Boltzmann Generators for Conformer Generation in Data-Sparse Environments, *arXiv*, 2022, preprint, arXiv:221110771, DOI: [10.48550/arXiv.2211.10771](https://doi.org/10.48550/arXiv.2211.10771).
  - 27 K. Swanson, J. L. Williams and E. M. Jonas, Von mises mixture distributions for molecular conformation generation, In *International Conference on Machine Learning*, PMLR, 2023, pp. 33319–33342.
  - 28 E. Bengio, M. Jain, M. Korablyov, D. Precup and Y. Bengio, Flow network based generative models for non-iterative diverse candidate generation, *Adv. Neural Inf. Process. Syst.*, 2021, **34**, 27381–27394.
  - 29 N. Malkin, M. Jain, E. Bengio, C. Sun and Y. Bengio, Trajectory balance: Improved credit assignment in gflownets, *Adv. Neural Inf. Process. Syst.*, 2022, **35**, 5955–5967.
  - 30 G. Landrum. RDKit: open-source cheminformatics, 2016, **3**, 8, <https://www.rdkit.org/>.
  - 31 C. Bannwarth, S. Ehlert and S. Grimme, GFN2-xTB—An accurate and broadly parametrized self-consistent tight-binding quantum chemical method with multipole electrostatics and density-dependent dispersion contributions, *J. Chem. Theor. Comput.*, 2019, **15**(3), 1652–1671.
  - 32 C. Bannwarth, E. Caldeweyher, S. Ehlert, A. Hansen, P. Pracht, J. Seibert, *et al.*, Extended tight-binding quantum chemistry methods, *Wiley Interdiscip. Rev.: Comput. Mol. Sci.*, 2021, **11**(2), e1493.
  - 33 X. Gao, F. Ramezanghorbani, O. Isayev, J. S. Smith and A. E. Roitberg, TorchANI: A free and open source PyTorch-based deep learning implementation of the ANI neural network potentials, *J. Chem. Inf. Model.*, 2020, **60**(7), 3408–3415.



- 34 C. Devereux, J. S. Smith, K. K. Huddleston, K. Barros, R. Zubatyuk, O. Isayev, *et al.*, Extending the applicability of the ANI deep learning molecular potential to sulfur and halogens, *J. Chem. Theory Comput.*, 2020, **16**(7), 4192–4202.
- 35 R. Vargas, J. Garza, B. P. Hay and D. A. Dixon, Conformational Study of the Alanine Dipeptide at the MP2 and DFT Levels, *J. Phys. Chem. A*, 2002, **106**(13), 3213–3218, DOI: [10.1021/jp013952f](https://doi.org/10.1021/jp013952f).
- 36 J. Zeng, Y. Tao, T. J. Giese and D. M. York, QD $\pi$ : A quantum deep potential interaction model for drug discovery, *J. Chem. Theory Comput.*, 2023, **19**(4), 1261–1275, DOI: [10.1021/acs.jctc.2c01172](https://doi.org/10.1021/acs.jctc.2c01172).
- 37 J. Buchner, Nested sampling methods, *Statistic Surveys.*, 2023, **17**, 169–215.
- 38 J. Torrado and A. Lewis, Cobaya: Bayesian analysis in cosmology, *Astrophysics Source Code Library*, 2019, 1910.
- 39 J. Torrado and A. Lewis, Cobaya: Code for Bayesian Analysis of hierarchical physical models, *J. Cosmol. Astropart. Phys.*, 2021, **2021**(05), 057.
- 40 A. Gelman and D. B. Rubin, Inference from iterative simulation using multiple sequences, *Stat. Sci.*, 1992, **7**(4), 457–472.
- 41 M. Xu, S. Luo, Y. Bengio, J. Peng and J. Tang, Learning neural generative dynamics for molecular conformation generation, *arXiv*, 2021, preprint, arXiv:2102.10240, DOI: [10.48550/arXiv.2102.10240](https://doi.org/10.48550/arXiv.2102.10240).

