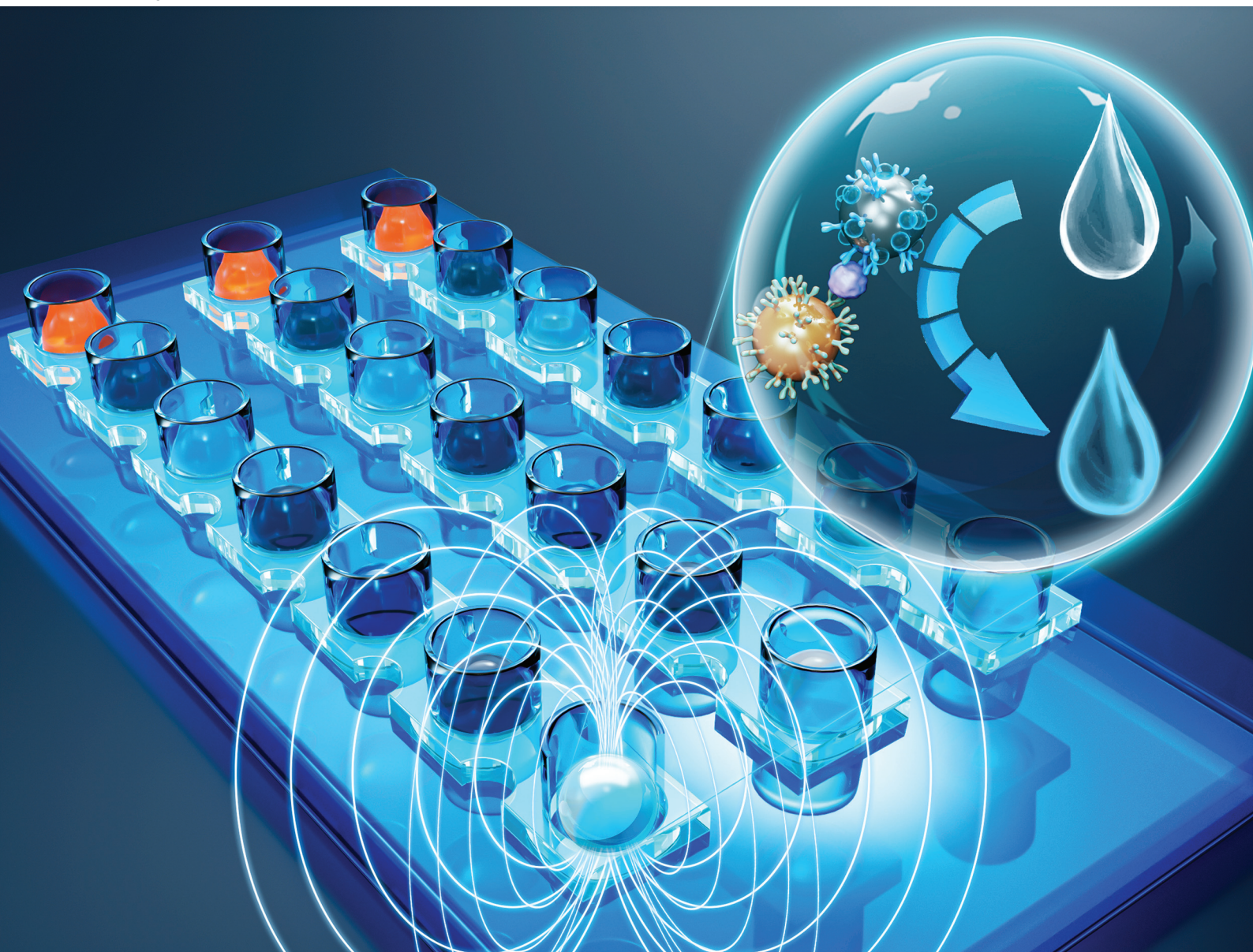


# Analyst

rsc.li/analyst



ISSN 0003-2654

**PAPER**

Shilun Feng, Bei Li *et al.*

A microfluidic immunosensor for automatic detection of carcinoembryonic antigen based on immunomagnetic separation and droplet arrays

# Advance your career in science

with professional recognition that showcases  
your **experience, expertise and dedication**

## Stand out from the crowd

Prove your commitment  
to attaining excellence in  
your field

## Gain the recognition you deserve

Achieve a professional  
qualification that inspires  
confidence and trust

## Unlock your career potential

Apply for our professional  
registers (RSci, RSciTech)  
or chartered status  
(CChem, CSci, CEnv)

## Apply now

[rsc.li/professional-development](https://rsc.li/professional-development)

