



Cite this: *J. Mater. Chem. B*, 2022, 10, 7222

Recent advances in biomaterial-assisted cell therapy

Yu Chen,^{abc} Samira Pal^a and Quanyin Hu ^{abc}*

With the outstanding achievement of chimeric antigen receptor (CAR)-T cell therapy in the clinic, cell-based medicines have attracted considerable attention for biomedical applications and thus generated encouraging progress. As the basic construction unit of organisms, cells harbor low immunogenicity, desirable compatibility, and a strong capability of crossing various biological barriers. However, there is still a long way to go to fix significant bottlenecks for their clinical translation, such as facile preparation, strict stability requirements, scale-up manufacturing, off-target toxicity, and affordability. The rapid development of biotechnology and engineering approaches in materials sciences has provided an ideal platform to assist cell-based therapeutics for wide application in disease treatments by overcoming these issues. Herein, we survey the most recent advances of various cells as bioactive ingredients and outline the roles of biomaterials in developing cell-based therapeutics. Besides, a perspective of cell therapies is offered with a particular focus on biomaterial-involved development of cell-based biopharmaceuticals.

Received 20th March 2022,
Accepted 29th April 2022

DOI: 10.1039/d2tb00583b

rsc.li/materials-b

1. Introduction

Cell therapy has been receiving increasing attention as a rapidly developing and emerging field in translational medicine.^{1,2}

Cells, the basic functional units of living organisms, are natural producers and carriers of proteins and molecules.³ By exerting complex mechanisms to avoid immune system attack, cells are highly biocompatible with the capability of low toxicity, crossing various biological barriers and homing to specific tissues, thus modulating the pathological environment.^{4,5} Compared to small molecule drugs or biologics, cell therapies can achieve more integrated and complex functions such as self-proliferation, differentiation, and direct elimination/repair of diseased cells/tissues.⁶ Also, given the natural tropism and multiple interactions between the cells and diseased microenvironment,

^a Pharmaceutical Sciences Division, School of Pharmacy, University of Wisconsin-Madison, Madison, WI 53705, USA. E-mail: qhu66@wisc.edu

^b Carbone Cancer Center, School of Medicine and Public Health, University of Wisconsin-Madison, Madison, WI 53705, USA

^c Wisconsin Center for NanoBioSystems, School of Pharmacy, University of Wisconsin-Madison, Madison, WI 53705, USA



Yu Chen

Yu Chen received his Master's degree in medicinal chemistry from China Pharmaceutical University in 2017. And he obtained his PhD degree in Pharmaceutics from Fudan University in 2021. He then worked in Dr Quanyin Hu's lab as a postdoctoral fellow at the School of Pharmacy, University of Wisconsin-Madison. His research interest is to leverage chemical biology for cell-based therapeutics.



Quanyin Hu

Quanyin Hu is an Assistant Professor at the School of Pharmacy, University of Wisconsin-Madison (UW-Madison). He received his PhD degree in biomedical engineering at the University of North Carolina at Chapel Hill (UNC-CH) and North Carolina State University. Before he joined UW-Madison, he was a postdoc associate at the Koch Institute for Integrative Cancer Research at the Massachusetts Institute of Technology (MIT). His research group focuses on drug delivery, cell therapy, immunotherapy, and personalized therapy.

cell therapies offer unique advantages in a wide range of diseases.^{2,7,8}

In recent years, numerous different types of cell therapies have gradually been developed preclinically or have been approved for clinical trials or even marketing.⁹ Stem cells and cells derived from their differentiation have become ideal models for guiding the precise treatment of diseases and have shown great potential in various structurally damaging diseases such as spinal cord injury and fibrosis.^{7,10} The cell research field has been further advanced by the success of chimeric antigen receptor (CAR)-T cell therapy, which is considered a breakthrough in immunotherapy and approved by the U. S. Food and Drug Administration (FDA) to treat hematologic tumors.¹ Genetically engineered commensal bacteria have been shown to target tumors and have been applied to treat skin cancer, including melanoma, bringing new ideas to improve cancer research.^{11,12} The efficacy of cell therapy depends primarily on the rational control and regulation of cell function and behavior in the physiological and pathological environment.¹³ To obtain therapeutic cell products nowadays, live cells extracted from the donor need to be isolated and purified, genetically modified, and massively amplified before they can be used for subsequent processing, stockpiling, and usage.⁶ Throughout the therapeutic cycle, maintenance of cell activity, consistency of function, and stability of storage and transportation become significant challenges to meet the clinical demand for cellular products.¹⁴

Rapid advances in biotechnologies and engineered materials provide directions to address major challenges in the clinical translation of cell therapies.¹⁵ Novel biomaterials can facilitate the clinical translation of cellular products by providing

reliable solutions to the obstacles mentioned above.¹⁶ With the assistance of engineered biomaterials, it is possible to mimic the *in vivo* microenvironment and provide a well-defined ecological niche for cells, thus stably producing a cellular phenotype consistent with *in vivo* function.¹⁷ Biomaterials can support specific behaviors such as homing and directed differentiation of certain cells and maintain long-term cellular activity.¹⁸ Also, corresponding biomaterials can be constructed to regulate cellular behavior with the help of cellular responsiveness to external specific environments (*e.g.*, composition, charge, stiffness, stress, *etc.*).¹⁹ It is worth emphasizing that the construction of therapeutic cell-biomaterial couples is a promising but challenging approach. During preparation, slight changes in the pH, temperature, ionic strength, and osmotic pressure may significantly affect cell viability and intrinsic function.³ Therefore, by choosing a rational strategy for modifying cells, engineered cells possess new functions conferred by biomaterials and maintain their biological activity to the maximum extent.

This review surveys the latest scientific discoveries and technological innovations in engineering and developing novel biomaterials for adjuvant cell production in various cell therapies such as stem cells, immune cells, and bacteria with detailed examples (Fig. 1). The principles of cell-centered design of adjuvant materials are summarized, including cell surface modification, cell binding, and genetic engineering. Special emphasis is given to applying biomaterials to assist cell therapy in cancer, autoimmune diseases, and tissue regeneration. The prospects and challenges of biomaterial applications in overcoming critical problems in clinical translation of cell therapies under the integration of multidisciplinary theories are also highlighted.

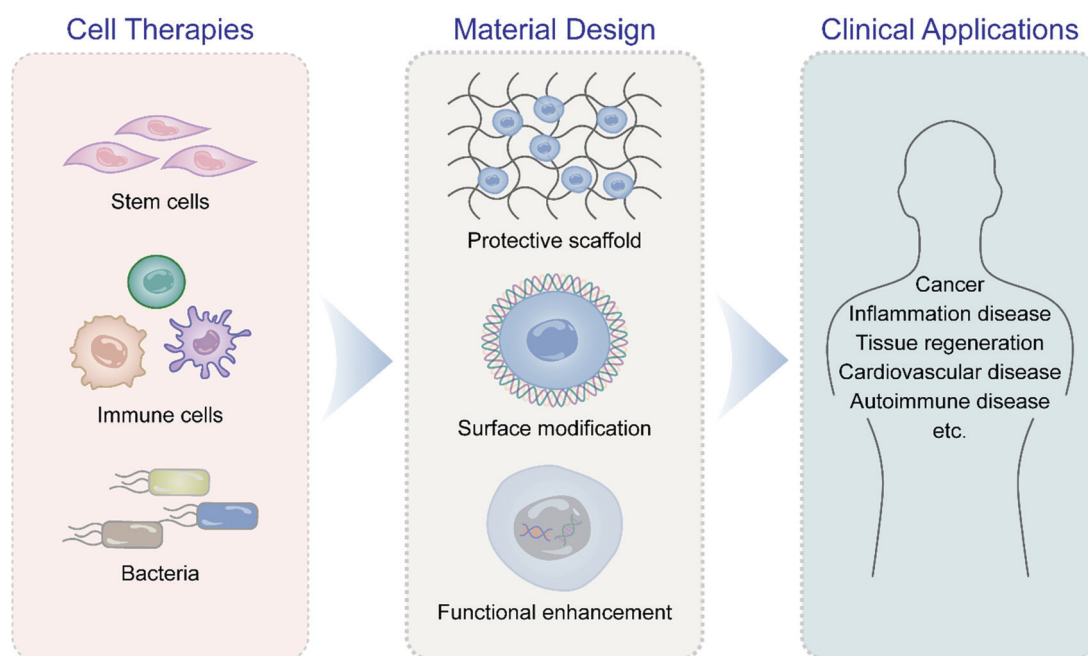


Fig. 1 Schematic illustration of biomaterial-assisted immune cell, stem cell, and bacteria therapies for cancers, inflammation diseases, tissue regeneration, cardiovascular diseases and autoimmune diseases.

2. Cell therapies

2.1 Immune cell therapies

2.1.1 T cell therapies. Cell-based immunotherapy is the most advanced treatment modality available with clinical proof of its effectiveness against cancer, infectious diseases, auto-immune diseases, allograft rejection, and cardiovascular disorders.¹³ Immune cell therapy has significantly increased in versatility and effectiveness due to advances in immunology, genetic engineering, gene editing, and synthetic biology.²⁰ T cell therapy has achieved remarkable clinical success in eliminating cancer and extending patient survival rates with a variety of adoptive T cell therapies, including tumor-infiltrating lymphocytes (TIL),²¹ CAR-T,²² T cell receptor engineered T cells (TCR-T),²³ and Treg-based therapies.¹⁴ The TILs extracted from tumors can recognize various tumor-associated antigens, while TCR-T cells and CAR-T cells are genetically engineered to target specific antigens.¹³ Their specificity led to impressive therapeutic effects on B cell leukemia,²⁴ lung cancer,²⁵ ovarian cancer,²⁶ liver cancer,²⁷ and breast cancer.²⁸ Although the FDA has approved multiple T cell-based medicines, there are still hurdles to overcome, including time-consuming manufacturing methods, cytokine release syndrome, low antigen expression, neurologic toxicity, off-target side effects, and poor cell durability.²⁹

2.1.2 Macrophage therapies. Macrophages, differentiated from circulating monocytes, are highly plastic cells that exert various effects, including tissue repairment and development, cellular debris clearance, pathogen scavenging, and modulation of inflammatory status.³⁰ The nature of the cytokine milieu and the surrounding microenvironment can drive the resultant macrophages into a wide range of phenotypes, which are generally simplified into two groups: classically activated macrophages (M1) and alternatively activated macrophages (M2).³¹ M1 macrophages boost a proinflammatory response by secreting cytokines like tumor necrosis factor (TNF), interleukin-1 (IL-1), and IL-12 and increasing the migration of inflammation-related cells to diseased sites.³² M1 macrophages also upregulate antigen processing and presentation genes and costimulatory molecules to augment T-cell responses. These functions are important in fighting against bacterial and viral infections, and they may also play a role in antitumor immunity.³³ In contrast, M2 macrophages involve in immune function normalization and homeostasis, such as initiating anti-inflammatory responses, parasite elimination, immunoregulation, wound healing, and tissue regeneration.³⁴ Tumor-associated macrophages (TAMs), a subpopulation of M2 macrophages, promote genetic instability, angiogenesis, desmoplastic process, immunosuppression, and metastasis, resulting in tumor progression.³⁵ The main focus of cell therapies has been on developing cellular therapies derived from lymphocytes. However, their effectiveness in treating certain diseases, particularly solid tumors, needs further improvement.³⁶ It has been proposed that macrophages, which accumulate in tumors and penetrate the surrounding stromal tissue, may provide a solution to the solid tumor-homing problem.³¹ Furthermore, whereas lymphocytes directly kill

tumor cells, cells in the myeloid lineage also boost the endogenous immune system by presenting antigens, providing an alternative perspective for immune cell-based therapies. In addition, because of the innate immune response and specific behavior in the tissue repair process, macrophage therapies have proven to be particularly effective in inflammation diseases and regenerative medicine. However, apart from the difficult large-scale production and quality control of universal macrophages, the inherent phenotype plasticity not only provides a promising modality for treating various pathological conditions but also poses daunting challenges in their *in vivo* applications since the therapeutics would usually cross many different physiological environments and exert functions in varied disease stages.³⁷ Moreover, given that macrophages are the primary source of many cytokines and growth factors,³⁸ a paracrine manner may compromise the treatment efficacy of macrophage-based therapies.

2.1.3 Natural killer cell therapy. Besides the primary focus on T cells, the increasing applications of other endogenous lymphocytes, such as natural killer (NK) cells, have extended the scope of immune cell therapies.² NK cells can detect and damage malignant cells without prior antigen presentation, relying on their costimulatory and inhibitory receptors. NK cells also activate innate and adaptive immune cells through the secretion of cytokines or chemokines.³ Recently, it was reported that genetically engineered NK cells expressing CAR on their cell surface exhibited extraordinary therapeutic potential in clinical trials.³⁹ This lymphocyte subset possesses innate immune functions that could enhance their therapeutic efficacy beyond standard T cells and provide an avenue toward developing allogeneic “off-the-shelf” cell products.⁴⁰ Other than T cells, NK cells possess a shorter half-life and lower cytokine secretion during circulation, mitigating the risk of a non-specific systemic immune response.⁹ Besides, NK cells that can recognize tumor-associated ligands may offer advantages over conventional T cells for CAR-directed cancer therapy.⁴¹ Such benefits enable NK cell therapies to be safer and more effective for cancer immunotherapy, providing an alternative to CAR-T cell treatment. Clinical trials involving CAR-NK cells have been initiated against solid and hematologic tumor antigens, with complete responses against CD19⁺ hematologic malignancies.⁴² Furthermore, NK cells serve as the main pathological cells in hypersensitivity reactions and autoimmune disorders, where NK cells attack the healthy tissues.⁴³ Despite their unprecedented advances, NK cell-based therapeutics still have several drawbacks that limit their widespread applications, including poor abilities crossing physiological barriers, expensive cost, and difficulties in long-term storage and transportation.⁴⁴

2.1.4 Dendritic cell therapy. Dendritic cells (DCs) are the most important antigen-presenting cells (APCs) in the immune systems. They activate the immune response through capturing, processing, and presenting antigens.⁴⁵ While immature DCs process and present antigens under normal conditions, mature DCs can further activate naive T cells after exposure to antigens.⁴⁶ Generally speaking, DCs can concomitantly process and present

antigens to T cells through the major histocompatibility complex (MHC). Meanwhile, they will upregulate the expression of costimulatory molecules like CD80, CD86, and CD40 during maturation, which is conducive to the activation of T cells. Furthermore, DCs can facilitate T cell accumulation and maintain their ability to combat infections.⁴⁶ Based on the effective antigen presentation potency and T cell-activating abilities, DC-based therapies have been applied to anticancer treatments, through which DCs are collected from patients and educated *ex vivo* to direct the immune systems against malignant cells. Despite the clinical success in cancer immunotherapy, there are still challenges hindering their wide applications, such as standardized preparation, antigen pulsing, and suitable administration route.⁴⁷

2.1.5 Regulatory T cell therapy. Regulatory T cells (Treg cells) are a small portion of immune cells responsible for maintaining homeostasis by suppressing immune overactivation.⁴⁸ Therefore, deficiencies in functions of Treg cells can cause a dysregulated immune response to normal tissues and thus induce inflammation diseases, including graft-*versus*-host disease, transplantation rejection, and autoimmune diseases.¹⁴ The multifunctional immunosuppressive abilities render Treg cells a promising therapeutic for treating inflammation disorders. Treg cell therapy has been demonstrated to be feasible, tolerable, and potentially effective in certain illness scenarios in early-phase clinical trials.⁴⁹ Meanwhile, the selectivity and functionality of Treg cells obtain significant improvements benefiting from the recent achievements in genetic engineering and other biotechnologies.⁹ As the field moves, significant challenges remain. First, practical methods are required to obtain sufficient Treg cells, given the limitation on the number of CD4⁺ T cells in circulation, especially in many autoimmune situations. Second, Treg cells possibly undergo uncontrolled expansion *in vivo*, leading to off-target immunosuppression in patients. Finally, plenty of Treg cells may raise the risk of neoplasia or compromise the efficiency of host immune systems against pathogen infections.¹⁴

2.2 Stem cell therapies

Stem cell therapies hold the potential to revolutionize healthcare by allowing for the regeneration of damaged or dysfunctional tissues, thereby providing treatments for several diseases unsolvable by conventional medicines like muscular dystrophies, diabetes, and neurodegeneration.^{50–52} Over the last couple of decades, research centered on stem cells has advanced to the use of autologous cells to generate a range of mature cell types and even tiny organs, or organoids *ex vivo*, by maximizing the regeneration potential of somatic stem cells found in specific tissues, such as bone marrow or skeletal muscle.⁵³ Researchers may currently obtain immature embryonic cells in the terminally differentiated forms by the advent of induced pluripotent stem (iPS) cells.⁵⁴ These iPS cells can be developed into any cell type found in a given tissue, enabling achievable personalized treatments. These tailored cells can be employed to repair injured tissues and evaluate appropriate medications and treatment recommendations.⁵⁵ Over the last few years, successful attempts of stem cell therapies have fueled optimism that regenerative medicine tactics would provide a promising treatment regimen

for some refractory diseases. It was reported that epidermal stem cells can repair more than 80% of the skin surface area of a young patient with a fatal blistering disorder.⁵⁶ In other cases, individuals with macular degeneration obtain significantly improved vision after transplanting retinal pigment epithelial cells derived from embryonic stem cells or patient-derived iPS cells into the eye.⁵⁷ Despite such exciting great achievements, most stem cell clinical trials have failed to receive regulatory approval and commercialization as several challenges preventing the clinical translation of stem cell therapies exist, such as maintenance of the stem cell state, reproducible large-scale expansion of stem cells, uncontrollable *in vivo* fate, potential tumor formation at the injection site, and harsh storage conditions.⁵³

2.3 Bacteria therapy

In evolution, microbiota, especially bacteria, have developed a symbiotic relationship with human beings by maintaining the homeostasis of a specific physiological environment. Due to the vital role in immunomodulation and antitumor capacities, bacterial strains involve cancer and several infectious diseases, such as inflammatory bowel disease (IBD), sepsis, and arthritis.¹¹ Besides the direct effects of their structural compositions, the bacteria also affect the pathogenesis, development, and treatment of complicated diseases by producing metabolites.⁵⁸ These characteristics endow bacteria with incomparable abilities to detect and intervene in the progress of tumors and inflammatory diseases. With a better understanding of bacteria and their habitat, using bacteria in biomedical applications has evolved. Furthermore, with the advancement of genetic engineering technology and microbiology in recent years, the application of engineered bacteria has accelerated.⁵⁹ In general, bacteria could either directly treat diseases, such as probiotics-mediated treatment against ulcerative colitis, or combine with other therapeutic agents to enhance the treatment efficacy. Bacteria-based therapies are frequently administered orally, which necessitates the protection of bacteria from the stomach's acidic pH and the harsh environment of the gastrointestinal (GI) tract, allowing bacteria to maintain viability and proliferation after reaching the desired site.⁶⁰ Additionally, mitigating the pathogenicity and immunogenicity of microorganisms is essential in preventing undesirable adverse effects.

3. Biomaterial-assisted cell therapies

Cell-based therapeutics have the potential for broad biomedical prospects due to their intrinsic capabilities to flexibly cope with dynamic pathological conditions. However, as “live” medicines, the practical applications of these functional cells are restricted by the challenges of maintaining their viability and functionality, and ensuring their efficacy that is usually restricted by the surrounding environment, which collectively pose additional requirements for designing a favorable harbor to cultivate the cell-based therapeutics at the desired sites.⁹ Recent years have witnessed explosive growth in materials science, thereby developing various sophisticated biomaterials, both synthetic and

natural, that could function as delivery carriers and protection scaffolds to enhance the retention and viability of the therapeutic cells.^{16,61} Additionally, these biomaterials could endow the cell-based therapeutics with novel functions and thus maximize their potential in disease treatments. Furthermore, with the assistance of the rationally designed biomaterials, the cell behaviors could be more precisely traced and redirected, providing new possibilities for cell therapies.⁶²

3.1 Biomaterial-assisted immune cell therapies

Despite significant progress in preclinical research of immune cell therapy and the approval of numerous FDA-approved T cell-based medicines, there are still barriers to expanding their clinical applications, such as time-consuming manufacturing methods, off-target toxicity, poor potency in specific diseased conditions, and low cell persistence.^{1,6} Emerging approaches based on genetic engineering and synthetic biology may provide the solutions to overcome these difficulties, such as removal of checkpoint molecules, upregulation of tumor-homing receptors, and expression of functional secretory proteins to modulate the microenvironment.¹⁶ While the genetic modifications facilitate T cells to overcome some challenges, other obstacles, such as expansion difficulties, on-target but off-tumor side effects, and neurotoxicities, have challenged the applications of genetically engineered immune cells.⁶³

Biomaterials have been widely used in cancer, cardiovascular disease, metabolic disorders, and tissue engineering for decades by serving as effective components or auxiliary ingredients.⁹ For example, a biomaterial structure with appropriate stiffness and shape for immune cell culture, expansion, and storage might be built using various compositions and functional motifs. Furthermore, the internal cavity may have a sufficient loading capacity, and the structural framework allows for ligand functionalization to recruit immune cells *in situ* using recruitment or induction molecules. Immune cell therapies combined with biomaterial platforms can concentrate cells, maintain cell retention, improve pharmacokinetics, and reduce side effects.

3.1.1 Biomaterial-assisted T cell therapies. In recent years, T cell therapeutics have shown remarkable success in hematologic malignancies such as B-cell acute lymphoblastic leukemia and non-Hodgkin's lymphoma.¹³ In contrast, T cell therapies for solid tumors lagged behind hematologic malignancies. Several factors can cause poor responses to T cell treatments. First, effector T cells need to infiltrate the tumor tissue, which necessitates extravasation, migration, and penetration.³¹ Indeed, engineered lymphocytes should cross the aberrant tumor vasculature with fewer adhesion molecules, resist interference from chemokines and cytokines, and overcome a dense extracellular matrix. Additionally, T cells would undergo unfavorable conditions inside the tumor microenvironment (TME), including hypoxic and acidic microenvironments, the upregulation of immune checkpoint ligands, and the abundance of immunosuppressive cells, such as TAMs, myeloid-derived suppressor cells (MDSCs), and Treg cells.^{64,65} Chronic antigen exposure can also cause T-cell exhaustion, remarkably reducing the potency. Even if the engineered cells survive in the TME, solid

tumors usually have varied surface antigen expression, resulting in recognition evasion, partial cancer cell clearance, and even recurrence from antigen-negative cancer cells.¹³ Finally, as for solid tumors, selecting specific target antigens with limited expression in normal tissue expression is also a challenge.

To obtain the effective and safe improvement of T cell therapy against solid tumors, Hao *et al.* attached a liposome containing the metabolism-modulating drug avasimibe onto the surface of the T cells without an obvious effect on their abilities through a lipid-inserting manner (Fig. 2(A)).⁶⁶ While liposomes could stably encapsulate avasimibe during circulation and extravasation, the metabolic modulator would undergo controllable release at the tumor site to upregulate the cholesterol levels of the T cell membrane, causing T cell receptor clustering long-term activation. By combining T cell therapy with metabolic intervention, this immunotherapy strategy exhibited improved efficacy against tumor resistance in mice with melanoma and glioblastoma. Furthermore, there were no clear systemic negative effects from the infusion of modified T cells. Given the ease of production and desirable safety profile, these cell-surface anchor-engineered T cells provide a promising strategy to improve the treatment efficacy of T cell therapy against solid tumors. Tang *et al.* proposed another “backpack” strategy to effectively increase the utility and functionality of T cell therapy towards solid tumors (Fig. 2(B)).⁶⁷ In this study, protein nanogels encapsulating the interleukin-15 super-agonist complex, which could sense membrane reduction potential changes after T cell activation and release the supporting protein drugs, were constructed and conjugated onto the surface of engineered T cells. By covalently coupling the nanogels to the surface of the proteins, the T cells were endowed with more potency and had enhanced function and persistence without noticeable toxicity after intravenous administration. The efficacy and safety of adoptive T cell therapy were increased by using and creating these “chemical backpacks”. Furthermore, the backpacks possess favorable biodegradability, an easy preparation process, and desirable storage stability, providing these T cell therapies with translational promises.

Compared to intravenous injection, regional administration of effector T cells could circumvent the physiologic barriers and tumor-infiltrating obstacles. Coon *et al.* proposed nitinol thin films as the micromesh implants to load CAR-T cells, realizing enhanced T cell treatment against solid tumors.⁶⁸ The resultant T cell-loaded micromesh films spatially conformed to the implantation site by which effector cells then underwent rapid proliferation, leading to abundant effector cells directly to the TME, and dramatically enhanced animal survival of mice bearing non-resectable ovarian cancer. Additionally, coating self-expandable stents with these T-cell-loaded films and placing them into subcutaneous tumors could extend the potency of the stents by delaying tumor ingrowth. Collectively, CAR-T-loaded micropatterned nitinol thin films can boost the benefits of T cell-based therapies by allowing direct access to tumors. Moreover, the stability of the film and the reproducibility of T-cell loading could be rationally adjusted by changing the pore geometry and mechanical properties of the micromeshes.

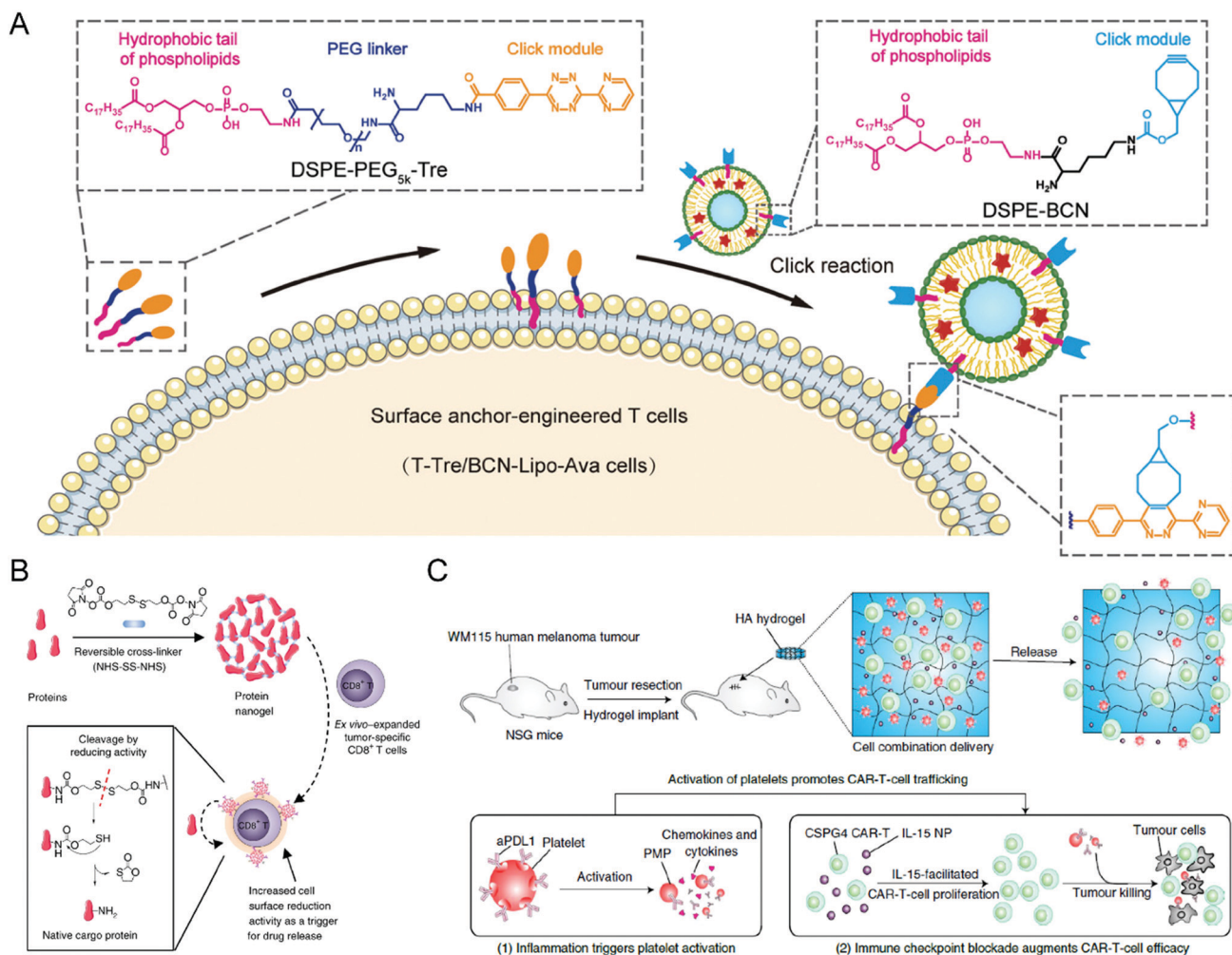


Fig. 2 (A) Schematic illustration of preparing liposome-anchored T cells. (B) Schematic illustration of protein nanogel preparation and the relevant release mechanism in response to the local reducing microenvironment. (C) Schematic illustration of the hydrogel loading with CAR-T cells and anti-PDL1-conjugated platelets inhibiting post-surgery tumor recurrence. (A) was reproduced from ref. 66 with permission from the American Association for the Advancement of Science, Copyright 2020. (B) was reproduced from ref. 67 with permission from Nature Publishing Group, Copyright 2018. (C) was reproduced from ref. 69 with permission from Nature Publishing Group, Copyright 2021.

Additionally, the thinness of micromeshes renders nutrients available to the effector cells, increasing their duration at the tumor location.

The development of novel biomaterials also provides more possibilities combined with other standard treatment modalities for T cell therapies, improving their treatment efficacy and expanding their applications. For example, Hu *et al.* designed a hydrogel containing CAR-T cells with the chondroitin sulfate proteoglycan 4 (CSPG4) antigens, which are abundantly expressed in human melanoma cells yet restricted in normal cells (Fig. 2(C)).⁶⁹ The hydrogel creates an environment so that the CAR-T cells can suppress any residual tumor cells post-surgery and prevent any future regrowth or recurrence of the tumor. Given that the inflammatory conditions can trigger the platelet activation to release platelet-derived microparticles (PMPs), the surface of platelets was conjugated with anti-PDL1 (engineered monoclonal antibodies against programmed-death ligand 1) to prepare P-aPDL1 that release aPDL1 antibodies to block PDL1 of

cancer cells under an inflammatory environment secondary to the cancer surgery, further preventing the T cell exhaustion. To promote the proliferation of the CAR-T cells, IL-15 NPs were loaded into the hydrogel and P-aPDL1. The coculture assay showed that CAR-T cells loaded in the hydrogel could undergo rapid expansion and effectively damage WM115 melanoma cells. The hydrogel demonstrated notable efficacy in controlling local tumor regrowth. Besides, Ogunnaike *et al.* proposed fibrin gels loaded with CAR-T cells to achieve slow release of the effector cells to the target region and promote higher antitumor activity than directly injecting CAR-T cells to the site.⁷⁰ A porous gel generated from human fibrinogen through thrombin-mediated enzymatic polymerization was designed to encapsulate T cells, which could gradually release the effector cells at the tumor resection cavity after *in situ* gel formation. The CAR-T cells that were deposited by the fibrin gel demonstrated effective antitumor activity in glioblastoma resection mouse models. This study is particularly advantageous for targeting tumor

recurrence, especially for brain tumors, compared to the direct injection of CAR-T cells. Ultimately, the fibrin gel loaded with CAR-T cells may prove incredibly effective when used over a long period post-surgery.

Recently, sophisticated biomaterial-assisted techniques have been developed to improve the efficacy, specificity, and safety of T cell treatments. To combat the shortcomings of T cell therapies, material-based platforms are being developed to concentrate cells, maintain cell retention, optimize pharmacokinetics, and prevent adverse effects. Co-loading T cells and other functional agents in integrated formulations gives effector cells exhaustion resistance, potentially boosting efficacy and durability in solid tumors. Furthermore, materials with TME-regulating abilities may help T cells expand or persist, resist the suppressive microenvironment, or act as a tumor-infiltrating promoter.

3.1.2 Biomaterial-assisted macrophage therapies. Macrophage therapy is another new and innovative cell-based treatment modality for cancer, inflammation disease, or tissue regeneration. As cells can constantly change, adapt, and grow, macrophages will work with the preexisting cells and the host immune system to fight against the diseases. Given that macrophages are highly plastic cells that can exert distinct functions under different phenotypes, generally speaking, a central goal of macrophage-based therapeutics is to maintain their specific phenotype in the diseased sites. Shields *et al.* designed a so-called discoidal particles-based “backpack” that can attach to the surface of macrophages and modulate their phenotypes *in vivo* (Fig. 3(A)).⁷¹ Backpacks resist phagocytosis for a couple of days and release cytokines to maintain the anticancer phenotypes of macrophages. Even in the highly immunosuppressive environment of breast cancer, the backpack-equipped macrophages showed long-lasting treatment efficacy. Compared to an equivalent dose of macrophages without cytokines, mice treated with backpack macrophages exhibited lower metastasis and suppressed tumor progression. Overall, these findings will allow a wide variety

of inflammatory diseases and disorders to be treated and have a broad range of expansions in clinical applications in the future.

Besides induction of phenotype polarization, biomaterials could extend the functions of macrophages, leading to a synergistic effect on refractory diseases. Hou *et al.* propose a macrophage-based cell therapy that overcomes sepsis-causing bacteria resistance (Fig. 3(B)).⁷² The method employs vitamin C lipid nanoparticles to transfect macrophages with antimicrobial peptides and cathepsin B (AMP-CatB) mRNA. Since the lysosome of macrophages is the targeting site for bactericidal activities, the vitamin C lipid nanoparticles enable the specific accumulation of AMP-CatB lysosomes. After transfer, the adoptive macrophages could eliminate multidrug-resistant pathogens such as *Staphylococcus aureus* and *Escherichia coli*, resulting in immunocompromised septic mice recovering completely. This study paves the way for developing nanomaterial-assisted macrophage therapy for infectious disorders and an alternate technique for combating multidrug-resistant bacteria-induced sepsis.

Material-engineered macrophages can also be used as an adjuvant treatment to combine chemotherapy, radiotherapy, and phototherapy to generate a synergistic effect, in addition to direct polarization of phenotypes and improvement of abilities. Unfortunately, the insufficient tumor-targeting capability poses challenges to macrophages to target malignant tumors, particularly metastatic cancers. However, chemically or genetically coupling targeting ligands is expected to endow engineered macrophages with metastatic tumor-targeting abilities.³ Furthermore, material-modified macrophages also serve as drug delivery systems to transport functional agents to the specific diseased site through their inherent homing effect.

3.1.3 Biomaterial-assisted NK cell therapy. The rapid progress of NK cell therapies benefits from an understanding of T cell treatments, in which biomaterial engineering techniques could significantly accelerate the development of NK cell-based therapeutics. Several studies recently demonstrated that integrating

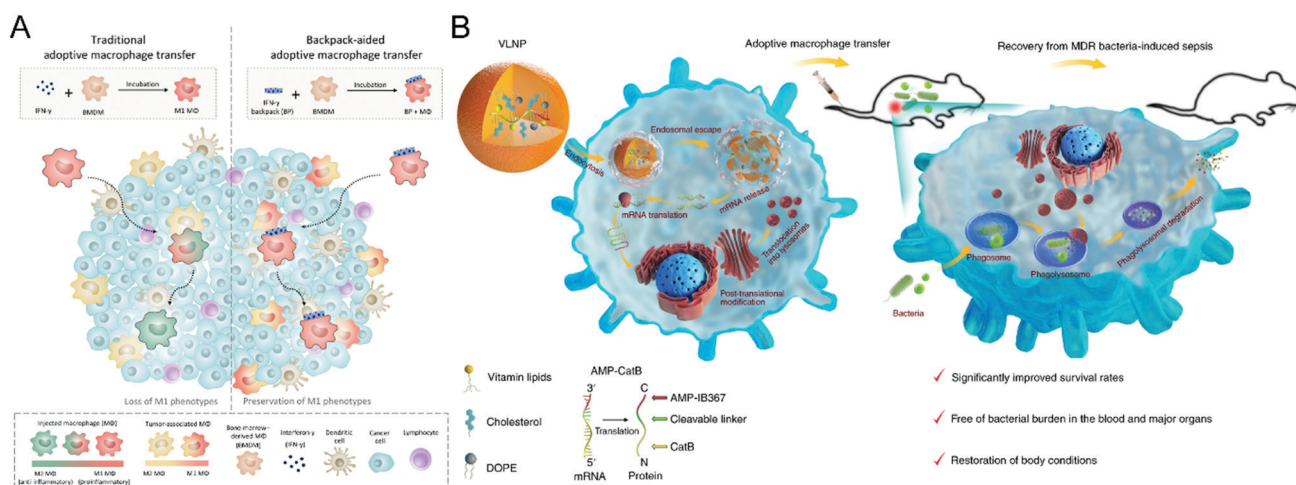


Fig. 3 (A) Schematic illustration of cellular backpack-based macrophage therapies. (B) Schematic illustration of preparing the vitamin-derived lipid nanoparticles and the action mechanism of adoptive macrophage-mediated sepsis treatment. (A) was reproduced from ref. 71 with permission from the American Association for the Advancement of Science, Copyright 2020. (B) was reproduced from ref. 72 with permission from Nature Publishing Group, Copyright 2020.

NK cell-based therapy with biomaterials can expand the generation of NK cells or boost their activity against tumors.

As for the difficulties in *ex vivo* expansion, Ahn *et al.* developed a 3D hyaluronic acid-based niche, termed 3D-ENHANCE, to culture NK cells (Fig. 4(A)).⁷³ Other than commonly used 2D methods, 3D-ENHANCE enables NK-92 cell lines and human epidermal growth factor receptor (EGFR)-specific CAR-NK cells with upregulated mRNA expression, increased cytokine secretion, rapid growth proliferation, and enhanced cancer cell-killing capacities. Moreover, the controllable biodegradability renders 3D-ENHANCE an implantable cell reservoir in the post-surgery cavity. The *in vivo* evaluation demonstrated that implanting 3D-ENHANCE into the surgical sites could reduce relapse and metastases; thus, this strategy provides a cytokine-free niche for *ex vivo* proliferation and postsurgical therapy of NK cells, which improves their low therapeutic efficiency.

To enhance the specificity of effector NK cells against cancer cells, modification with targeting ligand on their surface serves as a feasible option. Yang *et al.* incorporated the synthetic CD30-specific aptamers into the membrane of NK cells to produce aptamer-engineered NK cells (ApEn-NK) with an unnoticeable effect on genome and cell viability.⁷⁴ The resultant NK cells selectively bind to CD30-overexpressing lymphoma cells and effectively eliminate the malignant cells. Besides, based on the chemoenzymatic approach, Li *et al.* constructed antibody-modified NK-92MI cells through fucosyltransferase-mediated biomacromolecule transfer (Fig. 4(B)).⁷⁵ The Herceptin-engineered NK cells demonstrated increased abilities to eliminate HER2⁺ cancer cells, leading to a significantly improved anticancer effect on human tumor xenograft models.

A rapidly increasing number of biomaterial-based strategies have been designed for NK cell therapies. Especially, the adoptive transfer of NK cells provides a desirable option for cancer management due to the advances in *in vitro* expansion and activation approaches. However, overcoming the immunosuppressive microenvironment remains an urgent issue, which might compromise the potential of NK cell therapy for further applications.⁷⁶

3.1.4 Biomaterial-assisted DC therapy. DCs can be collected from a patient, loaded with antigens, modified for specific functions, expanded, and then administrated to treat cancer and autoimmune diseases. DC vaccines engage DCs to directly sensitize T and B cells through paracrine and antigen-presenting pathways.⁴⁶ Like other adoptive therapies, DC-based therapeutics also suffer from difficulties in expansion, insufficient targeting abilities, and poor cell persistence, which may be solved by integrating biomaterials into DCs to improve their viability, proliferation, and functionality.⁴⁷

Recently, many researchers have attempted to employ various biomaterials, such as scaffolds, polymeric particles, or hydrogels, to promote the viabilities and abilities of DCs. Srinivasan *et al.* reported a multicomponent immunomodulatory scaffold prepared by incorporating glutaraldehyde-crosslinked gelatin microparticles into an agarose matrix.⁷⁷ The resultant scaffold could create a suitable microenvironment for re-educating and generating DCs with a tolerogenic or regulatory phenotype through controllable release of granulocyte monocyte colony-stimulating factor (GM-CSF), dexamethasone (DEX), or peptidoglycan (PGN). The scaffold-treated DCs were demonstrated to suppress the proliferation of T cells. Moreover, Thomas *et al.* developed a

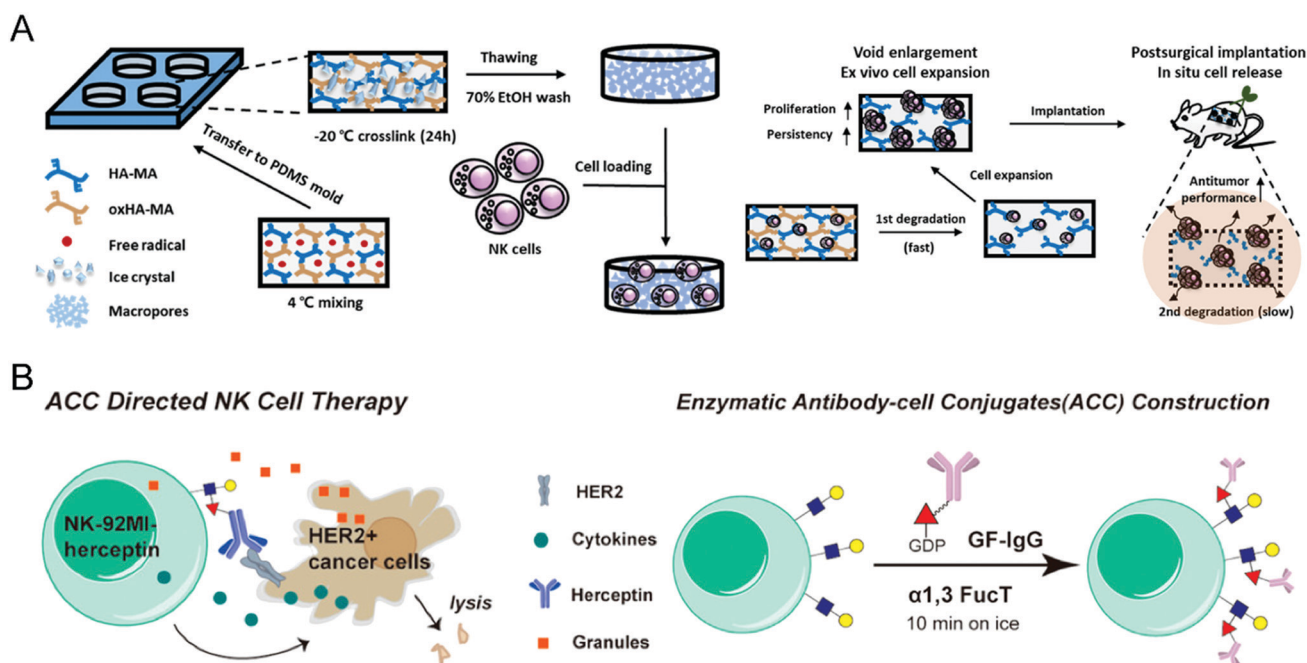


Fig. 4 (A) Schematic illustration of preparing NK cell-loaded 3D-ENHANCE and its relevant action mechanism. (B) Schematic illustration of enzymatic surface antibody modification to prepare Herceptin-conjugated NK cells. (A) was reproduced from ref. 73 with permission from Elsevier, Copyright 2020. (B) was reproduced from ref. 75 with permission from the American Chemical Society, Copyright 2018.

poly(ethylene glycol) (PEG)-based hydrogel for local transplantation of IL-10-treated DCs.⁷⁸ The DC-containing hydrogel could reprogram the immune microenvironment of the injection site, realizing prevention from the progression of sclerosis.

Surface engineering is also a practical approach to promoting the maturation and functionality of DCs. Liu *et al.* decorated the surface of DCs with polydopamine through a calcium-mediated process, thereby achieving controllable regulation of the DC maturation status.⁷⁹ While polydopamine serves as a ROS scavenger to inhibit DC maturation, the photothermal effect after irradiation with an 808 nm laser could initiate the maturation process, leading to effective activation. Yu *et al.* provided another surface modification approach to enhance the antigen presentation of DCs (Fig. 5(A)).⁸⁰ The synthetic glycopolymer modified onto the DC membrane could enhance the frequency and duration of their interaction with T cells, resulting in promoted T cell activation and increased anti-cancer efficacy. Collectively, biomaterial-based surface engineering provides a promising strategy for more efficient DC therapies.

Given their specific functions of antigen presentation and T cell activation, *in vivo* education of DCs is a simple method to

exert the treatment efficacy of DC therapies. Kim *et al.* designed an implantable microporous poly(lactide-co-glycolide) (PLG) scaffold encapsulating GM-CSF to *in vivo* recruit and enrich DCs to the pore of PLG scaffolds.⁸¹ From the same group, Shah *et al.* showed another macroporous biomaterial formed by covalent cross-linking between PEG and alginate, termed cryogel, to encapsulate acute myeloid leukemia (AML)-associated antigens, cytosine-guanosine oligodeoxynucleotide (CpG-ODN), and GM-CSF (Fig. 5(B)).⁸² After subcutaneous injection, the cryogel promotes *in situ* DC maturation and local T cell infiltration, leading to a potent anti-AML immune response. Other than the commonly used *ex vivo* education of DCs, these studies provide a new direction for DC-based treatments.

For DC therapies, many studies have been performed to maximize the therapeutic potentials of DCs through designing new biomaterials. Moreover, benefiting from the understanding of materials science, rational combination therapies can be developed to improve the treatment efficacy of DCs with other standard therapies.

3.1.5 Biomaterial-assisted Treg cell therapy. Tregs are frequently involved in the initiation and progression of allergies and autoimmune disorders, typically caused by the overactivation

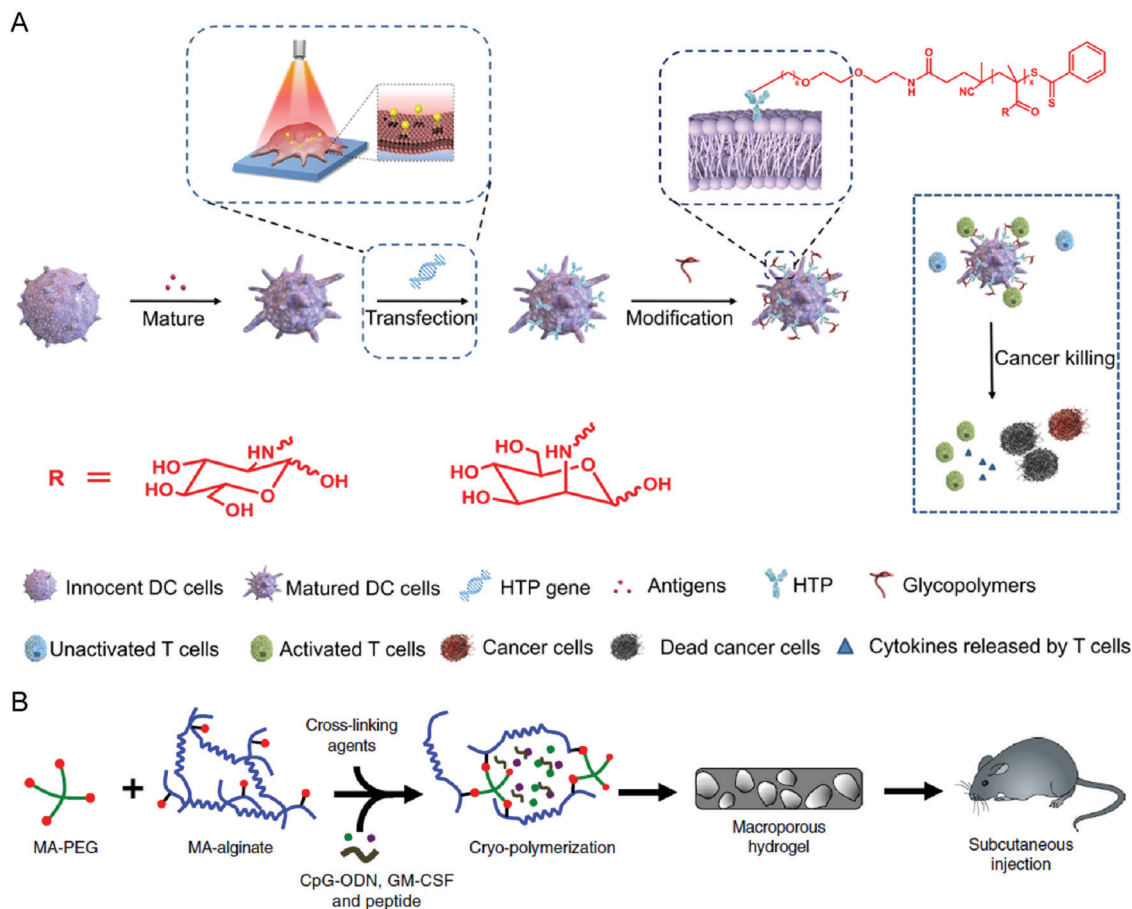


Fig. 5 (A) Schematic illustration of modifying DCs with glycopolymers. (B) Schematic illustration of preparing a cryogel loaded with immunomodulatory agents. (A) was reproduced from ref. 80 with permission from the American Association for the Advancement of Science, Copyright 2020. (B) was reproduced from ref. 82 with permission from Nature Publishing Group, Copyright 2020.

of effector T cells. It is commonly recognized that Tregs exert their immunosuppressive functions through the secretion of inhibitory cytokines and direct interaction with target proinflammatory cells.⁴⁸ These characteristics render Treg a durable therapeutic candidate to treat type 1 diabetes, psoriasis, immunological rejection, and inflammatory bowel diseases in which T cells are overactivated.¹⁴ Various biomaterials have been developed to explore the therapeutic potentials of Tregs for maintaining immune tolerance conditions.

Liu *et al.* reported an *in situ* Treg cell reprogramming strategy, employing poly(L-lactic acid) (PLLA) nanofibrous spongy microspheres as the injectable scaffold that contains PLLA/PEG-functionalized mesoporous silica nanoparticles (MSNs) and PLG microspheres (Fig. 6).⁸³ This system could enrich, expand, and educate Treg cells and thus create a local immunotolerant microenvironment. Finally, the multifunctional microspheres are demonstrated to relieve bone loss in a murine periodontitis model. In another study, Fisher *et al.* synthesized chemokine (C-C motif) ligand 22 (CCL22)-encapsulated PLG microparticles to realize immune tolerance and minimize rejection after limb transplantation.⁸⁴ After intragraft administration, the micro-particle systems could recruit Treg cells in allograft skin and promote their immunosuppressive functions with unnoticeable effects on conventional T cells. This study provides a practical approach to reducing the immunological rejection caused by transplantation.

Besides the above-mentioned *in vivo* recruitment of Treg cells, co-transplantation of organs with Treg cells is another feasible application for Treg cell therapies. Graham *et al.* employed a PLG scaffold to co-transplant Treg cells and islet grafts for protecting islets from rejection in diabetic models.⁸⁵

The resultant PLG scaffold could recruit and educate host-derived Treg cells to co-localize inside grafts, leading to long-term and systemic immunological tolerance.

With the explosive growth in biomaterials, researchers would develop increasing strategies to expand the applications and accelerate the clinical translation of cell therapies.¹⁷ As for Treg cell-based therapies, expansion and function persistence remain the major issues requiring much more effort.

3.2 Biomaterial-assisted stem cell therapies

Stem cell treatment holds great potential in tissue regeneration and functional recovery. Stem cell therapeutics exert functions after intravenous or local administration through cell replacement, cytokine secretion, and dying-cell clearance.⁵² Despite their enormous abilities, stem cell therapies suffer from several difficulties in clinical translation, including low viability in the hostile diseased microenvironment and unfavorable biodistribution, immune rejection, and uncontrollable differentiation.⁵³ As a result, developing a biomaterial-based bioengineering strategy to address the limitations is a desirable option for enhancing the clinical translation potential of stem cell therapy.

Given that multiple factors compromise the treatment efficacy of mesenchymal stromal cells (MSCs), Gonzalez-Pujana *et al.* developed a multifunctional hydrogel system with tunable mechanical properties to maximize their immunomodulatory properties (Fig. 7(A)).⁸⁶ Immunomodulatory extracellular matrix hydrogels (iECM) generated from a click functionalized-alginate and fibrillar collagen incorporated by interferon γ (IFN- γ)-loaded heparin-coated beads, which increased the expression of a wide panel of key immunomodulatory and regulatory genes in bone marrow-derived primary human MSCs (hMSCs) and enhanced the

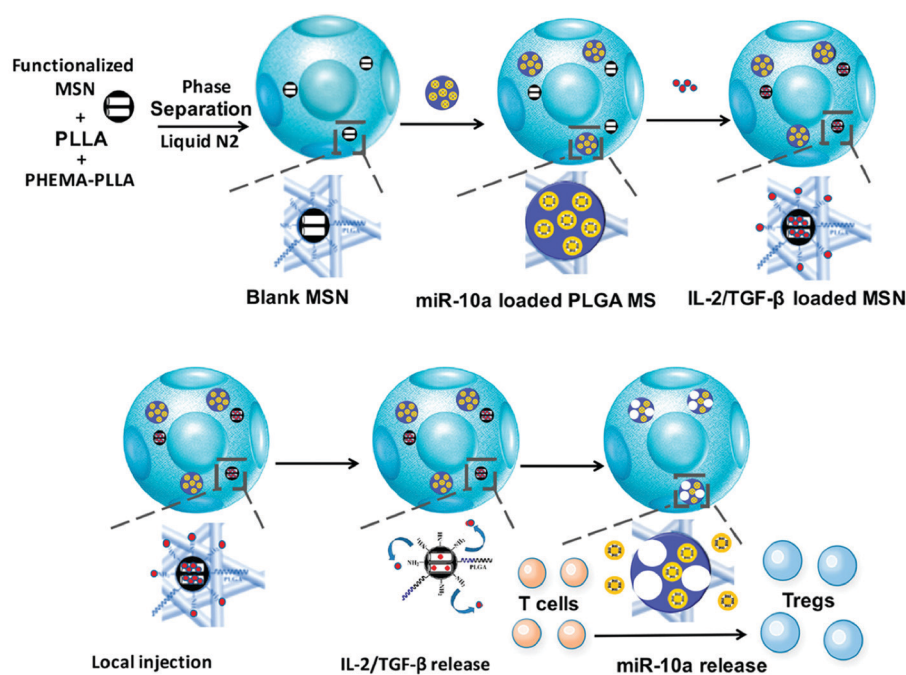


Fig. 6 Schematic illustration of preparing the multifunctional microspheres and their relevant action mechanism. Fig. 6 was reproduced from ref. 83 with permission from the American Chemical Society, Copyright 2018.

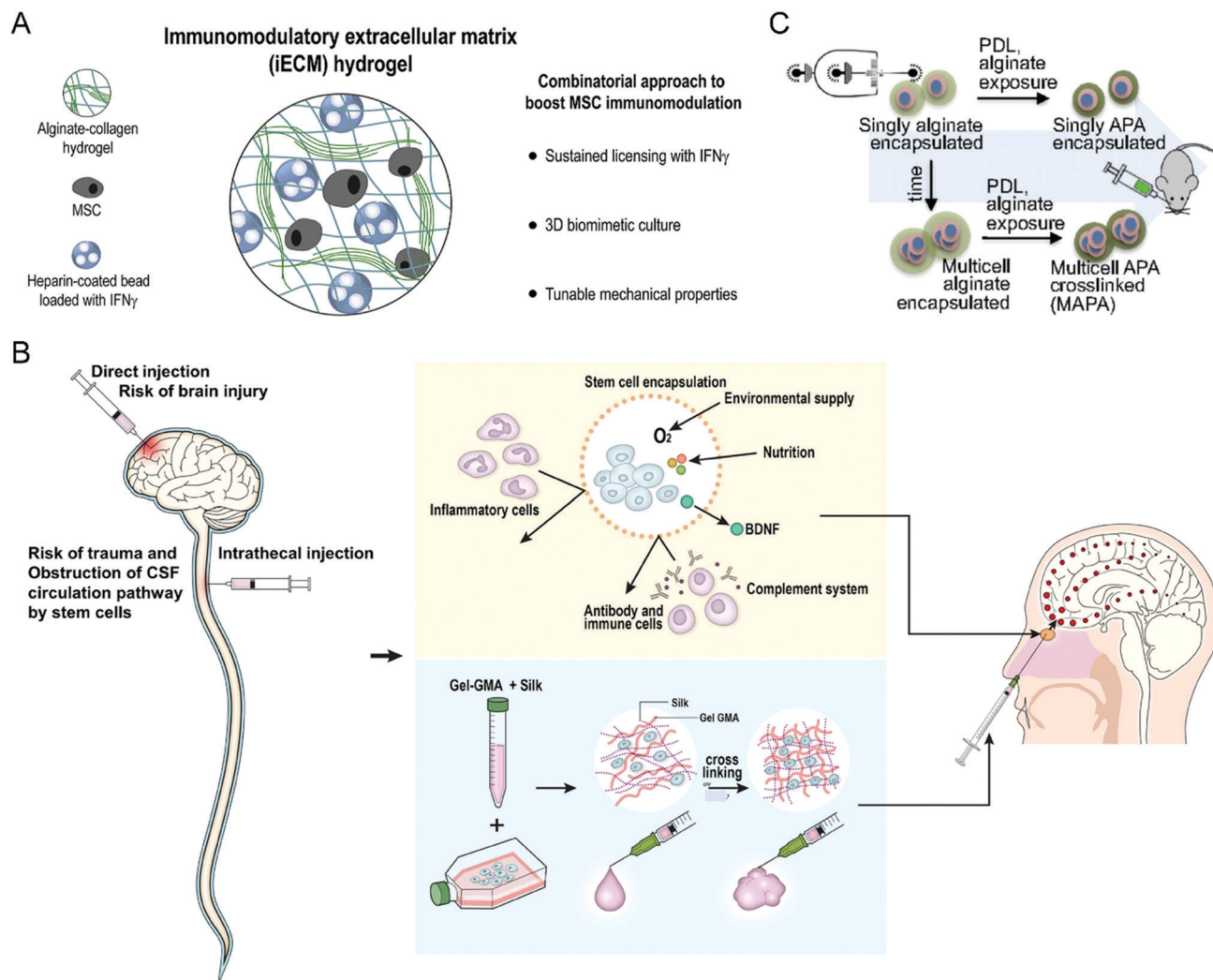


Fig. 7 (A) Schematic illustration of an iECM hydrogel for improving the immunomodulatory ability of MSCs. (B) Schematic illustration of silk fibroin-based hydrogel encapsulating hMSCs for brain injury treatment. (C) Schematic illustration of encapsulating mMSCs into alginate microgels. (A) was reproduced from ref. 86 with permission from Elsevier, Copyright 2020. (B) was reproduced from ref. 87 with permission from Elsevier, Copyright 2020. (C) was reproduced from ref. 88 with permission from the National Academy of Sciences of the United States of America, Copyright 2019.

secretion of indoleamine 2,3-dioxygenase 1 (IDO1) and galectin-9 (GAL9). Furthermore, the coculturing assay demonstrated that iECM-encapsulated hMSCs could significantly suppress the proliferation of activated human T cells, indicating enhanced immunomodulatory capabilities. Sultan *et al.* reported another kind of hydrogel system based on silk fibroin (SF) for brain injury treatment (Fig. 7(B)), which could encapsulate engineered hMSCs and facilitate the secretion of brain-derived neurotrophic factor (BDNF).⁸⁷ The SF that serves as the base for the proposed hydrogel systems is collected from the cocoons of a particular species of silk moths, *Bombyx mori*. The authors prepared multiple hydrogels with differing concentrations of SF and tested the relevant tensile strength and gel point. The results showed that SF-based hydrogels could increase the neurological function of specific brain-damaged areas in the rat model, serving as a minimally invasive alternative for treating brain injury.

Besides the hydrogel scaffold systems, Mao *et al.* encapsulated the single MSC into an alginate microgel through the

microfluidic device to maximize the therapeutic potential and overcome the short *in vivo* cell persistence and phenotype inconsistencies of stem cells (Fig. 7(C)).⁸⁸ Prior to administration, exposure to inflammatory cytokines upregulates the immunomodulatory genes in encapsulated cells. This bio-material encapsulation strategy could significantly improve the half-life of MSCs after intravenous injection due to alginate-mediated cell cluster formation and subsequent cross-linking with polylysine. Furthermore, these surface modifications are conducive to mitigating the clearance risks caused by innate and adaptive immune responses. The encapsulated stem cells finally improve the engraftment of major histocompatibility complex (MHC)-mismatched donor cells in a bone marrow transplant model, indicating that this microgel encapsulation approach is practical to prolong stem cell survival and boost their overall immunomodulatory potency.

Moreover, stem cells have been widely used to treat cardiovascular diseases. Given the poor retention of the transplanted

cells and inevitable entrapment in the lungs after intravenous injection, the Cheng group has developed various biomaterials, such as polymeric nanogels,⁸⁹ platelet nanovesicles,⁹⁰ ferumoxytol nanoparticles,⁹¹ and chemically engineered antibodies,⁹² to enhance the treatment efficacy of the stem cell-mediated heart repair. As for stem cell transplantation, Tang *et al.* attempted to encapsulate human cardiac stem cells into a thermosensitive nanogel with a porous and convoluted inner structure,⁸⁹ which protects the stems cells from the attack by immune cells but permits nutrient, oxygen, and secretion diffusion. Therefore, the resulting nanogel facilitates the repair of the heart and reduces scar sizes without systemic inflammation and local T-cell infiltration. Furthermore, given the low retention and engraftment of the transplanted cells, Tang *et al.* developed a fast, straightforward and safe engineering approach for cardiac stem cells to improve their vascular delivery (Fig. 8(A)).⁹⁰ Through fusion with platelet nanovesicles, the modified cells could express a platelet surface maker and maintain their tissue regeneration abilities, leading to selective accumulation at the injured site for exerting a repairing function. Also, Vandergriff *et al.* employed FDA-approved ferumoxytol nanoparticles to label stem cells, realizing enhanced cell engraftment and treatment efficacy through magnetically-targeted cell delivery.⁹¹ Besides, Li *et al.* proposed the biorthogonal click chemistry-mediated pretargeting strategy to redirect endogenous circulating stem cells to the injured heart (Fig. 8(B)).⁹² Especially, the affinity between platelets and endothelial progenitor cells (EPCs) could promote the binding of EPCs to the injured blood vessels, leading to effective stem cell-based heart repair. Benefiting from these tailored biomaterials, they have provided a promising prospect for stem cell-based treatments of cardiovascular disease.

Stem cell therapy has advanced at an unparalleled rate in transplantation and regenerative medicine due to its self-renewal capabilities. The versatility of stem cells enables researchers to choose matched stem cell types according to the needs of the specific disease treatment. Due to the advances in materials science, both scaffold and capsule systems can not only provide

stem cells with protection and maintenance but also regulate their development to increase therapeutic benefits. Despite their enormous potential, the immaturity of stem cell expansion and differentiation poses a big challenge to their clinical translation. In addition, carcinogenicity and mutagenicity remain the major issues to be addressed.

3.3 Biomaterial-assisted bacteria therapies

Bacteria have the potential to selectively target the diseased site by sensing the pathological cues, leading to either suppression or acceleration of the disease progression. For example, probiotics could reprogram microbial homeostasis and promote the repairment of the mucosal barrier in the GI tract to improve the IBD treatment.⁹³ In contrast, certain bacteria would deteriorate the pathological processes by blocking the immune response-mediated clearance. These essential properties render bacteria a promising therapeutic modality for specific disorders from the perspective of healthcare. However, the clinical translation of bacterium therapies is hampered by their possible toxicity and immunogenicity, indicating the requirement of biomaterials engineering. The design principles for bacteria-based therapeutics are centered on minimizing toxicity, increasing *in vivo* survivability and proliferation capabilities, and endowing bacteria with extra functionalities for improved treatment potency. The convergence of bacteria and materials science will pave the way for novel therapeutic possibilities involving engineered microbes.

Despite the extensive exploration of bacterial-mediated biotherapies for cancer treatments, the poor potency hinders their clinical application, mainly due to the low tumor-specific accumulation after administration. Geng *et al.* conjugated aptamers onto the surface of bacteria through a cyto-compatible amidation approach,⁹⁴ leading to significantly improved tumor localization following systemic injection (Fig. 9(A)). Compared to unmodified counterparts, bacteria with an optimal conjugation density of aptamers realize high accumulation at the tumor site and remarkable selectivity against tumor cells. Furthermore, the engineered *Salmonella* triggered the

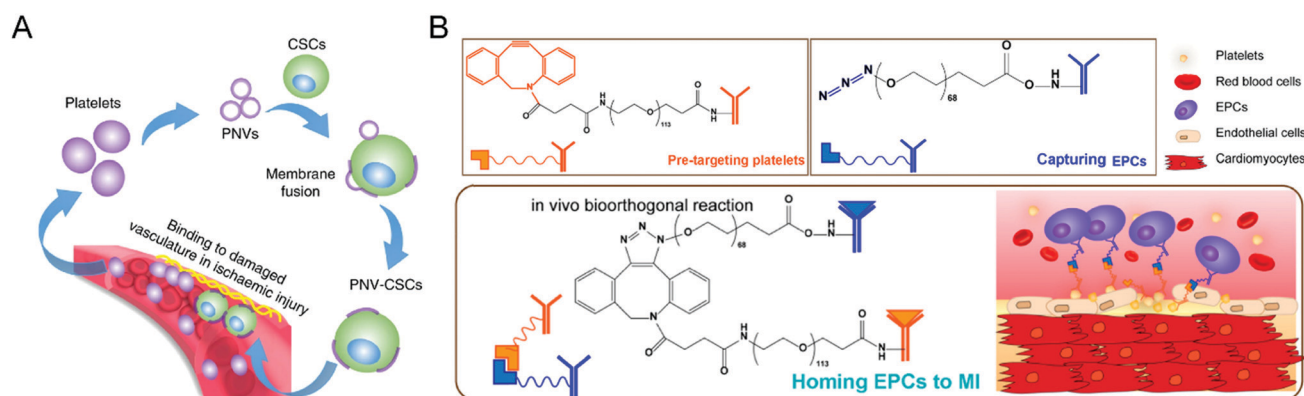


Fig. 8 (A) Schematic illustration of targeted heart injury repair mediated by stem cells decorated with platelet nanovesicles for improving the repairing capability of MSCs. (B) Schematic illustration of redirecting endogenous circulating stem cells to the injured heart through a biorthogonal click chemistry-mediated pretargeting strategy. (A) was reproduced from ref. 90 with permission from Nature Publishing Group, Copyright 2018. (B) was reproduced from ref. 92 with permission from the American Chemical Society, Copyright 2018.

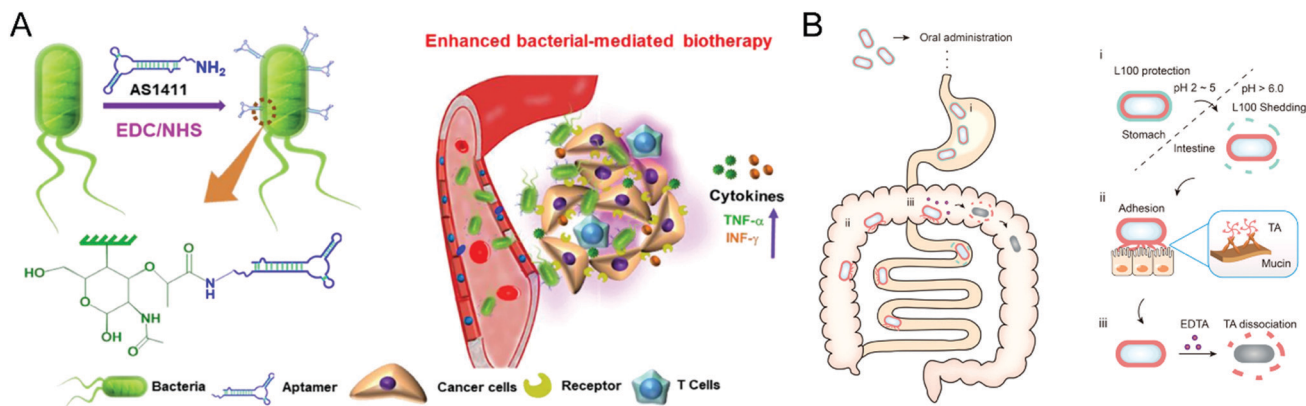


Fig. 9 (A) Schematic illustration of aptamer-modified bacteria for enhanced biotherapy. (B) Schematic illustration of the action mechanism of the double layer-coating bacteria in the GI tract. (A) was reproduced from ref. 94 with permission from Nature Publishing Group, Copyright 2021. (B) was reproduced from ref. 95 with permission from Elsevier, Copyright 2021.

anticancer immune response inside the tumor and thus exhibited improved treatment efficacy in both 4T1 and H22 murine tumor models. This study demonstrated the feasibility of surface conjugation to change the bacterial behavior and increase antitumor biotherapy.

Moreover, the surface coating serves as another common material-based engineering technique for bacteria. Considering the promise of probiotics in treating IBD by modulating gut microbiota homeostasis, Liu *et al.* developed a double-layer coating method to facilitate the resistance of probiotics against the harsh conditions in the GI tract and thus enhance the retention time of probiotics (Fig. 9(B)).⁹⁵ The coating strategy employed tannic acid (TA) and enteric L100 to encapsulate *Escherichia coli* Nissle 1917 (EcN) strain, increasing availability and persistence after oral administration. Then, the engineered EcN systems selectively released TA-EcN in the intestine through pH-responsive degradation of the outer L100 layer. The powerful mucoadhesive abilities of the TA layer prolonged the EcN retention time without a noticeable effect on the viability and proliferation of EcN, achieving potent prophylactic and treatment efficacy in murine IBD models. Furthermore, the TA layer can be eliminated by adding ethylenediaminetetraacetic acid to reduce the possible adverse reactions caused by long-term TA mucoadhesion. This coating strategy provides a practical approach for bacteria therapies to treat GI tract disorders.

Due to the interactions with intestinal microbiota and many disorders, bacterial therapies provide a novel strategy for complex diseases. However, many bacteria possess a pathogenicity and strong colonization ability. Furthermore, the immunogenicity of most bacteria would cause undesirable adverse reactions like systemic inflammatory response syndrome and the risk of sepsis. Additionally, bacteria are sensitive to hostile physiological environments, including gastric acid, which may compromise their availability after oral administration. Biomaterial-assisted techniques can facilitate bacteria to fully exert their therapeutic functions and improve *in vivo* biosafety. Synthetic polymers or biofilms can be coated on the surface of bacteria to

protect them from a harsh environment. Surface modification with antibodies or targeting ligands could also promote selective accumulation in the diseased site and treatment efficacy. Moreover, advanced material-based engineering methodologies can endow bacteria with novel functionalities, extending their clinical applications.

3.4 Biomaterial-assisted other cell therapies

The past decade has witnessed the important role of biomaterials in promoting the efficiency of immune cell, stem cell, and bacteria therapies, inspiring the applications of various biomaterials to other cell therapies. For example, Nash *et al.* developed an alginate capsule to load human ARPE-19 cells as a cytokine-producing factory (Fig. 10(A)).⁹⁶ After tumor-adjacent administration, the capsules could controllably release effector cytokines and trigger the anticancer immune response, eradicating intraperitoneal tumors without systemic toxicities. As for the treatment of diabetes, Bose *et al.* reported a retrievable and implantable microdevice constructed by a polydimethylsiloxane reservoir and polycarbonate track-etched membrane to protect xenogeneic cells from the destruction of host immune systems without affecting their therapeutic functions (Fig. 10(B)).⁹⁷ Vegas *et al.* encapsulated human embryonic stem cell-derived β cells into alginate derivatives for glycemic correction after intraperitoneal administration.⁹⁸ In another study, Bochenek *et al.* tested the immune protection of seven alginate hydrogel spheres for allogeneic pancreatic islet cells.⁹⁹ They found that a chemically modified alginate derivative, Z1-Y25, and the relevant formulation enabled long-time transplantation of pancreatic islets without the need for immunosuppression. Wang *et al.* employed a nanofiber-integrated cell encapsulation device to protect human pluripotent stem cell-derived functional β cells from immune rejection and thus realize diabetes reversal within one week (Fig. 10(C)).¹⁰⁰ Moreover, the device possesses desirable scalability and retrievability with an unnoticeable fibrotic response. Besides hydrogels, the microneedle is an emerging device for transdermal drug delivery, which could also assist cell therapies in a painless, low-invasive, and long-time manner.¹⁰¹ Ye *et al.*

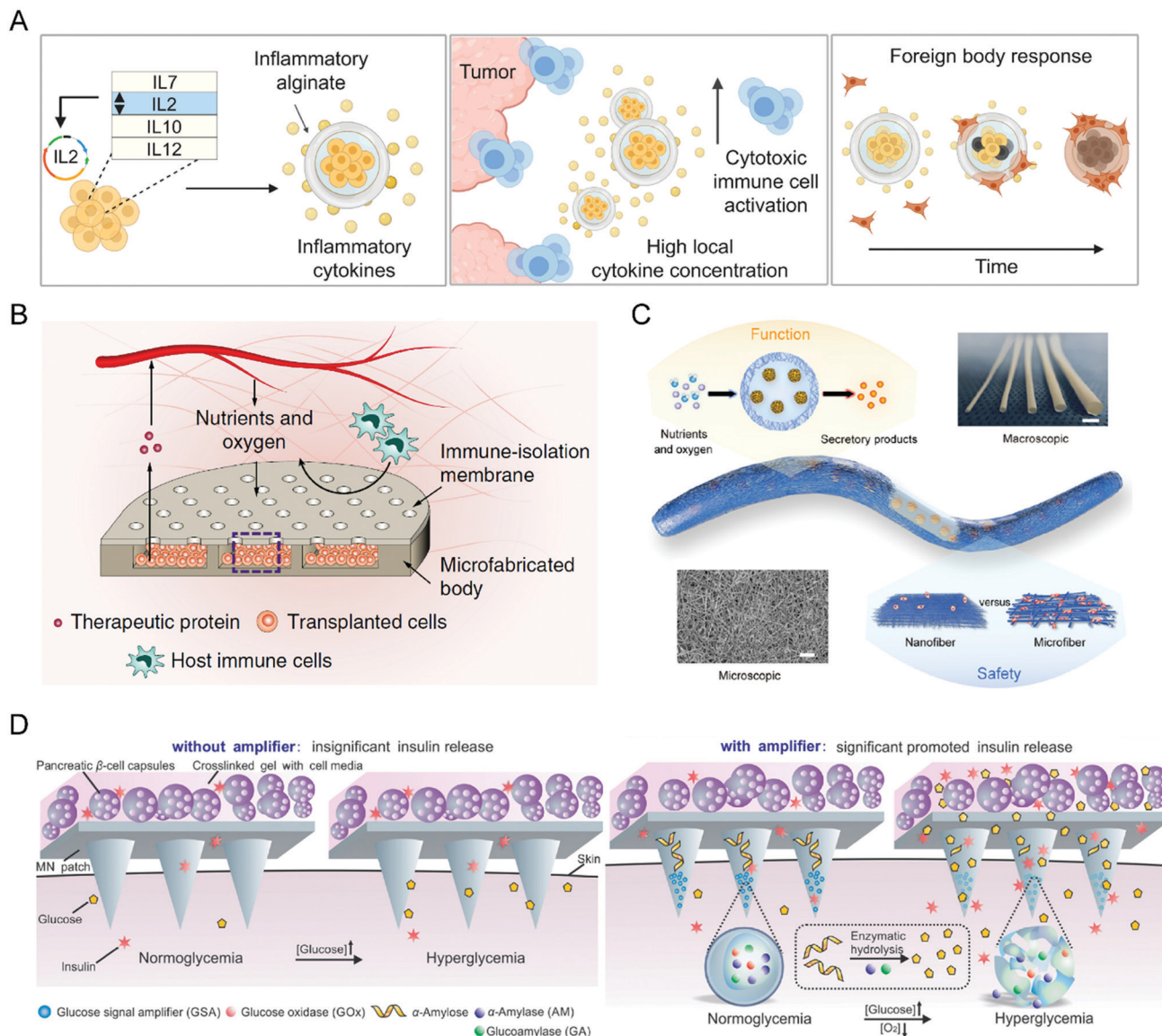


Fig. 10 (A) Schematic illustration of preparing the cytokine factory and its relevant action mechanism. (B) Schematic illustration of the device design and its relevant action mechanism. (C) Schematic illustration of the device design and structure. (D) Schematic illustration of the design of the functionalized microneedle path and its relevant action mechanism. (A) was reproduced from ref. 96 with permission from the American Association for the Advancement of Science, Copyright 2022. (B) was reproduced from ref. 97 with permission from Nature Publishing Group, Copyright 2020. (C) was reproduced from ref. 100 with permission from the American Association for the Advancement of Science, Copyright 2021. (D) was reproduced from ref. 102 with permission from Wiley-VCH Verlag GmbH & Co. KGaA, Copyright 2016.

integrated microneedles with pancreatic-cell capsules that respond to changes in blood glucose and produce insulin (Fig. 10(D)).¹⁰² Then, the microneedles were incorporated with glucose signal amplifiers, which were constructed by synthetic nanovesicles containing glucose oxidase, α -amylase, and glucoamylase and could trigger insulin release from pancreatic-cell capsules through the glucose-involved enzymatic cascade. Finally, the microneedle patch rapidly reduced blood glycemic levels in type 1 diabetic mice. Collectively, as the therapeutic cell species increase, the demands for novel biomaterials will rise; in other words, as materials science advances, more cell therapies will be developed and improved.

4. Conclusions and perspectives

The inherent ability to interact with and adapt to specific physiological processes renders cells an emerging treatment modality widely investigated for various diseases. The proliferation and differentiation potentials could be applied to tissue repair and regeneration. Due to the capacities of stimulus-responsive protein secretion, cell therapies are suitable for dynamic, long-term therapeutic administration. Biomaterials play a key role in supporting, delivering, and functionalizing the therapeutic cells to enhance their biomedical applications. Collectively, biomaterials can serve as supportive scaffolds or

protective coatings for cell-based therapeutics to maintain their viability and intrinsic functionality and induce specific cell phenotypes through educating, training, or redirecting the target cells. Also, the biomaterials frequently serve as the delivery vehicles to transport abundantly available cells to the diseased sites and increase their retention by improving the targeting effect or protecting them from environmental damages. Moreover, given the strong therapeutic abilities of “live” medicine, versatile biomaterials could equip these therapeutic cells with additional functions and thus synergistically exert treatment efficacy. Biomaterial engineering techniques have been demonstrated to accelerate the translation of therapeutic cells. However, the costs and difficulties of cell collection, expansion, and engineering may compromise applicability in the clinic. The stringent quality control and safety standards for the materials also pose additional challenges to the approval of material-based cell therapeutics. Apart from the materials already approved for the clinic, new material modification and characterization approaches and the relevant mechanisms usually require extensive evaluations, leading to high time and manufacturing costs. Overall, with the increasingly rapid growth in developing sophisticated and smart biomaterials, material-modified cells would possess various new therapeutic potentials and extensive application prospects.

Conflicts of interest

The authors declare no conflicts of interest.

Acknowledgements

Q. H. acknowledges the start-up package support from the University of Wisconsin-Madison.

References

- H. J. Jackson, S. Rafiq and R. J. Brentjens, *Nat. Rev. Clin. Oncol.*, 2016, **13**, 370–383.
- N. Shimasaki, A. Jain and D. Campana, *Nat. Rev. Drug Discovery*, 2020, **19**, 200–218.
- Z. Li, Y. Wang, Y. Ding, L. Repp, G. S. Kwon and Q. Hu, *Adv. Funct. Mater.*, 2021, **31**, 2100088.
- J. Xue, Z. Zhao, L. Zhang, L. Xue, S. Shen, Y. Wen, Z. Wei, L. Wang, L. Kong, H. Sun, Q. Ping, R. Mo and C. Zhang, *Nat. Nanotechnol.*, 2017, **12**, 692–700.
- Q. Hu, W. Sun, J. Wang, H. Ruan, X. Zhang, Y. Ye, S. Shen, C. Wang, W. Lu, K. Cheng, G. Dotti, J. F. Zeidner, J. Wang and Z. Gu, *Nat. Biomed. Eng.*, 2018, **2**, 831–840.
- C. M. Britten, A. Shalabi and A. Hoos, *Nat. Rev. Drug Discovery*, 2021, **20**, 476–488.
- S. Yamanaka, *Cell Stem Cell*, 2020, **27**, 523–531.
- L. Bagno, K. E. Hatzistergos, W. Balkan and J. M. Hare, *Mol. Ther.*, 2018, **26**, 1610–1623.
- A. L. Facklam, L. R. Volpatti and D. G. Anderson, *Adv. Mater.*, 2020, **32**, e1902005.
- J. Wu, D. Song, Z. Li, B. Guo, Y. Xiao, W. Liu, L. Liang, C. Feng, T. Gao, Y. Chen, Y. Li, Z. Wang, J. Wen, S. Yang, P. Liu, L. Wang, Y. Wang, L. Peng, G. N. Stacey, Z. Hu, G. Feng, W. Li, Y. Huo, R. Jin, N. Shyh-Chang, Q. Zhou, L. Wang, B. Hu, H. Dai and J. Hao, *Cell Res.*, 2020, **30**, 794–809.
- Z. Li, Y. Wang, J. Liu, P. Rawding, J. Bu, S. Hong and Q. Hu, *Adv. Mater.*, 2021, **33**, 2102580.
- S. Patyar, R. Joshi, D. S. Byrav, A. Prakash, B. Medhi and B. K. Das, *J. Biomed. Sci.*, 2010, **17**, 21.
- E. W. Weber, M. V. Maus and C. L. Mackall, *Cell*, 2020, **181**, 46–62.
- C. Raffin, L. T. Vo and J. A. Bluestone, *Nat. Rev. Immunol.*, 2020, **20**, 158–172.
- R. Chen, L. Li, L. Feng, Y. Luo, M. Xu, K. W. Leong and R. Yao, *Biomaterials*, 2020, **230**, 119627.
- Y. Xue, J. Che, X. Ji, Y. Li, J. Xie and X. Chen, *Chem. Soc. Rev.*, 2022, **51**, 1766–1794.
- Z. Liao, W. Zhang, H. Zheng, Y. Wang, J. Yu, H. Li and Z. Gu, *J. Controlled Release*, 2022, **344**, 272–288.
- X. Hu, Z. Xia and K. Cai, *J. Mater. Chem. B*, 2022, **10**, 1486–1507.
- A. Isser, N. K. Livingston and J. P. Schneck, *Biomaterials*, 2021, **268**, 120584.
- J. H. Esensten, J. A. Bluestone and W. A. Lim, *Annu. Rev. Phytopathol.*, 2017, **12**, 305–330.
- N. Zacharakis, H. Chinnasamy, M. Black, H. Xu, Y. C. Lu, Z. Zheng, A. Pasetto, M. Langhan, T. Shelton, T. Prickett, J. Gartner, L. Jia, K. Trebska-McGowan, R. P. Somerville, P. F. Robbins, S. A. Rosenberg, S. L. Goff and S. A. Feldman, *Nat. Med.*, 2018, **24**, 724–730.
- S. J. Schuster, J. Svoboda, E. A. Chong, S. D. Nasta, A. R. Mato, O. Anak, J. L. Brogdon, I. Pruteanu-Malinici, V. Bhoj, D. Landsburg, M. Wasik, B. L. Levine, S. F. Lacey, J. J. Melenhorst, D. L. Porter and C. H. June, *N. Engl. J. Med.*, 2017, **377**, 2545–2554.
- A. P. Rapoport, E. A. Stadtmauer, G. K. Binder-Scholl, O. Goloubeva, D. T. Vogl, S. F. Lacey, A. Z. Badros, A. Garfall, B. Weiss, J. Finklestein, I. Kulikovskaya, S. K. Sinha, S. Kronsberg, M. Gupta, S. Bond, L. Melchiori, J. E. Brewer, A. D. Bennett, A. B. Gerry, N. J. Pumphrey, D. Williams, H. K. Tayton-Martin, L. Ribeiro, T. Holdich, S. Yanovich, N. Hardy, J. Yared, N. Kerr, S. Philip, S. Westphal, D. L. Siegel, B. L. Levine, B. K. Jakobsen, M. Kalos and C. H. June, *Nat. Med.*, 2015, **21**, 914–921.
- M. Martino, C. Alati, F. A. Canale, G. Musuraca, G. Martinelli and C. Cerchione, *Int. J. Mol. Sci.*, 2021, **22**, 2150.
- S. Srivastava, S. N. Furlan, C. A. Jaeger-Ruckstuhl, M. Sarvothama, C. Berger, K. S. Smythe, S. M. Garrison, J. M. Specht, S. M. Lee, R. A. Amezcua, V. Voillet, V. Muhunthan, S. Yechan-Gunja, S. P.-S. Pillai, C. Rader, A. M. Houghton, R. H. Pierce, R. Gottardo, D. G. Maloney and S. R. Riddell, *Cancer Cell*, 2021, **39**, 193–208e110.
- A. Sarivalasis, M. Morotti, A. Mulvey, M. Imbimbo and G. Coukos, *Ther. Adv. Med. Oncol.*, 2021, **13**, 1–17.
- B. Sun, D. Yang, H. Dai, X. Liu, R. Jia, X. Cui, W. Li, C. Cai, J. Xu and X. Zhao, *Cancer Immunol. Res.*, 2019, **7**, 1813–1823.

- 28 K. Pilipow, A. Darwich and A. Losurdo, *Semin. Cancer Biol.*, 2021, **72**, 90–101.
- 29 R. C. Larson and M. V. Maus, *Nat. Rev. Cancer*, 2021, **21**, 145–161.
- 30 F. Moroni, B. J. Dwyer, C. Graham, C. Pass, L. Bailey, L. Ritchie, D. Mitchell, A. Glover, A. Laurie, S. Doig, E. Hargreaves, A. R. Fraser, M. L. Turner, J. D.-M. Campbell, N. W.-A. McGowan, J. Barry, J. K. Moore, P. C. Hayes, D. J. Leeming, M. J. Nielsen, K. Musa, J. A. Fallowfield and S. J. Forbes, *Nat. Med.*, 2019, **25**, 1560–1565.
- 31 N. R. Anderson, N. G. Minutolo, S. Gill and M. Klichinsky, *Cancer Res.*, 2021, **81**, 1201–1208.
- 32 Y. Xia, L. Rao, H. Yao, Z. Wang, P. Ning and X. Chen, *Adv. Mater.*, 2020, **32**, e2002054.
- 33 M. Najafi, N. Hashemi Goradel, B. Farhood, E. Salehi, M. S. Nashtaei, N. Khanlarkhani, Z. Khezri, J. Majidpoor, M. Abouzaripour, M. Habibi, I. R. Kashani and K. Mortezaee, *J. Cell. Biochem.*, 2019, **120**, 2756–2765.
- 34 C. D. Mills, L. L. Lenz and R. A. Harris, *Cancer Res.*, 2016, **76**, 513–516.
- 35 K. Wu, K. Lin, X. Li, X. Yuan, P. Xu, P. Ni and D. Xu, *Front. Immunol.*, 2020, **11**, 1731.
- 36 M. Martinez and E. K. Moon, *Front. Immunol.*, 2019, **10**, 128.
- 37 C. Varol, A. Mildner and S. Jung, *Annu. Rev. Immunol.*, 2015, **33**, 643–675.
- 38 F. J. van Dalen, M. van Stevendaal, F. L. Fennemann, M. Verdoes and O. Ilina, *Molecules*, 2018, **24**, 9.
- 39 Y. Gong, R. G.-J. Klein Wolterink, J. Wang, G. M.-J. Bos and W. T.-V. Germeraad, *J. Hematol. Oncol.*, 2021, **14**, 73.
- 40 M. A. Morgan, H. Buning, M. Sauer and A. Schambach, *Front. Immunol.*, 2020, **11**, 1965.
- 41 D. Bollino and T. J. Webb, *Transl. Res.*, 2017, **187**, 32–43.
- 42 E. Liu, D. Marin, P. Banerjee, H. A. Macapinlac, P. Thompson, R. Basar, L. Nassif Kerbaui, B. Overman, P. Thall, M. Kaplan, V. Nandivada, I. Kaur, A. Nunez Cortes, K. Cao, M. Daher, C. Hosing, E. N. Cohen, P. Kebriaei, R. Mehta, S. Neelapu, Y. Nieto, M. Wang, W. Wierda, M. Keating, R. Champlin, E. J. Shpall and K. Rezvani, *N. Engl. J. Med.*, 2020, **382**, 545–553.
- 43 A. Cerwenka and L. L. Lanier, *Nat. Rev. Immunol.*, 2016, **16**, 112–123.
- 44 H. Klingemann, *OncoImmunology*, 2014, **3**, e28147.
- 45 G. M. Mantia-Smaldone and C. S. Chu, *BioDrugs*, 2013, **27**, 453–468.
- 46 S. K. Wculek, F. J. Cueto, A. M. Mujal, I. Melero, M. F. Krummel and D. Sancho, *Nat. Rev. Immunol.*, 2020, **20**, 7–24.
- 47 L. E. Fisher, L. Kammerling, M. R. Alexander and A. M. Ghaemmaghani, *Curr. Opin. Biotechnol.*, 2021, **74**, 194–203.
- 48 J. A. Bluestone, *Nat. Rev. Immunol.*, 2005, **5**, 343–349.
- 49 M. Romano, G. Fanelli, C. J. Albany, G. Giganti and G. Lombardi, *Front. Immunol.*, 2019, **10**, 43.
- 50 J. Li, Q. Zhang, W. Wang, F. Lin, S. Wang and J. Zhao, *J. Neurol.*, 2020, **268**, 4095–4107.
- 51 O. Lindvall and Z. Kokaia, *Nature*, 2006, **441**, 1094–1096.
- 52 S. Chari, A. Nguyen and J. Saxe, *Cell Stem Cell*, 2018, **22**, 781–782.
- 53 J. Galipeau and L. Sensebe, *Cell Stem Cell*, 2018, **22**, 824–833.
- 54 G. Q. Daley, M. W. Lensch, R. Jaenisch, A. Meissner, K. Plath and S. Yamanaka, *Cell Stem Cell*, 2009, **4**, 200–201; author reply 202.
- 55 W. Chen, P. H. Tsai, Y. Hung, S. H. Chiou and C. Y. Mou, *ACS Nano*, 2013, **7**, 8423–8440.
- 56 R. F. Aten, A. J. Eisenfeld, N. J. MacLusky and R. B. Hochberg, *J. Steroid Biochem.*, 1982, **16**, 447–449.
- 57 M. Mandai, A. Watanabe, Y. Kurimoto, Y. Hirami, C. Morinaga, T. Daimon, M. Fujihara, H. Akimaru, N. Sakai, Y. Shibata, M. Terada, Y. Nomiyama, S. Tanishima, M. Nakamura, H. Kamao, S. Sugita, A. Onishi, T. Ito, K. Fujita, S. Kawamata, M. J. Go, C. Shinohara, K. I. Hata, M. Sawada, M. Yamamoto, S. Ohta, Y. Ohara, K. Yoshida, J. Kuwahara, Y. Kitano, N. Amano, M. Umekage, F. Kitaoka, A. Tanaka, C. Okada, N. Takasu, S. Ogawa, S. Yamanaka and M. Takahashi, *N. Engl. J. Med.*, 2017, **376**, 1038–1046.
- 58 C. D. Mohan, S. Rangappa, S. C. Nayak, R. Jadimurthy, L. Wang, G. Sethi, M. Garg and K. S. Rangappa, *Semin. Cancer Biol.*, 2021, DOI: [10.1016/j.semcancer.2021.05.006](https://doi.org/10.1016/j.semcancer.2021.05.006).
- 59 S. Zhou, *Nature*, 2016, **536**, 33–34.
- 60 S. Li, W. Jiang, C. Zheng, D. Shao, Y. Liu, S. Huang, J. Han, J. Ding, Y. Tao and M. Li, *J. Controlled Release*, 2020, **327**, 801–833.
- 61 Z. Li, Y. Ding, J. Liu, J. Wang, F. Mo, Y. Wang, T. J. Chen-Mayfield, P. M. Sondel, S. Hong and Q. Hu, *Nat. Commun.*, 2022, **13**, 1845.
- 62 A. A. Abdeen and K. Saha, *Trends Biotechnol.*, 2017, **35**, 971–982.
- 63 D. Li, X. Li, W. L. Zhou, Y. Huang, X. Liang, L. Jiang, X. Yang, J. Sun, Z. Li, W. D. Han and W. Wang, *Signal Transduction Targeted Ther.*, 2019, **4**, 35.
- 64 M. O. Li, N. Wolf, D. H. Raulet, L. Akkari, M. J. Pittet, P. C. Rodriguez, R. N. Kaplan, A. Munitz, Z. Zhang, S. Cheng and N. Bhardwaj, *Cancer Cell*, 2021, **39**, 725–729.
- 65 D. C. Singleton, A. Macann and W. R. Wilson, *Nat. Rev. Clin. Oncol.*, 2021, **18**, 751–772.
- 66 M. Hao, S. Hou, W. Li, K. Li, L. Xue, Q. Hu, L. Zhu, Y. Chen, H. Sun, C. Ju and C. Zhang, *Sci. Transl. Med.*, 2020, **12**, eaaz6667.
- 67 L. Tang, Y. Zheng, M. B. Melo, L. Mabardi, A. P. Castano, Y. Q. Xie, N. Li, S. B. Kudchodkar, H. C. Wong, E. K. Jeng, M. V. Maus and D. J. Irvine, *Nat. Biotechnol.*, 2018, **36**, 707–716.
- 68 M. E. Coon, S. B. Stephan, V. Gupta, C. P. Kealey and M. T. Stephan, *Nat. Biomed. Eng.*, 2020, **4**, 195–206.
- 69 Q. Hu, H. Li, E. Archibong, Q. Chen, H. Ruan, S. Ahn, E. Dukhovlina, Y. Kang, D. Wen, G. Dotti and Z. Gu, *Nat. Biomed. Eng.*, 2021, **5**, 1038–1047.
- 70 E. A. Ogunnaike, A. Valdivia, M. Yazdimaghani, E. Leon, S. Nandi, H. Hudson, H. Du, S. Khagi, Z. Gu, B. Savoldo, F. S. Ligler, S. Hingtgen and G. Dotti, *Sci. Adv.*, 2021, **7**, eabg5841.

- 71 C. W.-t Shields, M. A. Evans, L. L. Wang, N. Baugh, S. Iyer, D. Wu, Z. Zhao, A. Pusuluri, A. Ukidve, D. C. Pan and S. Mitragotri, *Sci. Adv.*, 2020, **6**, eaaz6579.
- 72 X. Hou, X. Zhang, W. Zhao, C. Zeng, B. Deng, D. W. McComb, S. Du, C. Zhang, W. Li and Y. Dong, *Nat. Nanotechnol.*, 2020, **15**, 41–46.
- 73 Y. H. Ahn, L. Ren, S. M. Kim, S. H. Seo, C. R. Jung, D. S. Kim, J. Y. Noh, S. Y. Lee, H. Lee, M. Y. Cho, H. Jung, S. R. Yoon, J. E. Kim, S. N. Lee, S. Kim, I. W. Shin, H. S. Shin, K. S. Hong, Y. T. Lim, I. Choi and T. D. Kim, *Biomaterials*, 2020, **247**, 119960.
- 74 S. Yang, J. Wen, H. Li, L. Xu, Y. Liu, N. Zhao, Z. Zeng, J. Qi, W. Jiang, W. Han and Y. Zu, *Small*, 2019, **15**, e1900903.
- 75 J. Li, M. Chen, Z. Liu, L. Zhang, B. H. Felding, K. W. Moremen, G. Lauvau, M. Abadier, K. Ley and P. Wu, *ACS Cent. Sci.*, 2018, **4**, 1633–1641.
- 76 S. Im, D. Jang, G. Saravanakumar, J. Lee, Y. Kang, Y. M. Lee, J. Lee, J. Doh, Z. Y. Yang, M. H. Jang and W. J. Kim, *Adv. Mater.*, 2020, **32**, e2000020.
- 77 S. Srinivasan and J. E. Babensee, *ACS Biomater. Sci. Eng.*, 2020, **6**, 4062–4076.
- 78 A. M. Thomas, N. M. Beskid, J. L. Blanchfield, A. M. Rosado, A. J. Garcia, B. D. Evavold and J. E. Babensee, *J. Biomed. Mater. Res., Part A*, 2021, **109**, 1247–1255.
- 79 Y. Liu, Y. Han, H. Dong, X. Wei, D. Shi and Y. Li, *ACS Appl. Mater. Interfaces*, 2020, **12**, 4163–4173.
- 80 L. Yu, R. Feng, L. Zhu, Q. Hao, J. Chu, Y. Gu, Y. Luo, Z. Zhang, G. Chen and H. Chen, *Sci. Adv.*, 2020, **6**, eabb6595.
- 81 J. Kim, W. A. Li, W. Sands and D. J. Mooney, *ACS Appl. Mater. Interfaces*, 2014, **6**, 8505–8512.
- 82 N. J. Shah, A. J. Najibi, T. Y. Shih, A. S. Mao, A. Sharda, D. T. Scadden and D. J. Mooney, *Nat. Biomed. Eng.*, 2020, **4**, 40–51.
- 83 Z. Liu, X. Chen, Z. Zhang, X. Zhang, L. Saunders, Y. Zhou and P. X. Ma, *ACS Nano*, 2018, **12**, 9785–9799.
- 84 J. D. Fisher, W. Zhang, S. C. Balmert, A. M. Aral, A. P. Acharya, Y. Kulahci, J. Li, H. R. Turnquist, A. W. Thomson, M. G. Solari, V. S. Gorantla and S. R. Little, *Sci. Adv.*, 2020, **6**, eaax8429.
- 85 J. G. Graham, X. Zhang, A. Goodman, K. Pothoven, J. Houlihan, S. Wang, R. M. Gower, X. Luo and L. D. Shea, *Tissue Eng., Part A*, 2013, **19**, 1465–1475.
- 86 A. Gonzalez-Pujana, K. H. Vining, D. K.-Y. Zhang, E. Santos-Vizcaino, M. Igartua, R. M. Hernandez and D. J. Mooney, *Biomaterials*, 2020, **257**, 120266.
- 87 M. T. Sultan, B. Y. Choi, O. Ajiteru, D. K. Hong, S. M. Lee, H. J. Kim, J. S. Ryu, J. S. Lee, H. Hong, Y. J. Lee, H. Lee, Y. J. Suh, O. J. Lee, S. H. Kim, S. W. Suh and C. H. Park, *Biomaterials*, 2021, **266**, 120413.
- 88 A. S. Mao, B. Ozkale, N. J. Shah, K. H. Vining, T. Descombes, L. Zhang, C. M. Tringides, S. W. Wong, J. W. Shin, D. T. Scadden, D. A. Weitz and D. J. Mooney, *Proc. Natl. Acad. Sci. U. S. A.*, 2019, **116**, 15392–15397.
- 89 J. Tang, X. Cui, T. G. Caranasos, M. T. Hensley, A. C. Vandergriff, Y. Hartanto, D. Shen, H. Zhang, J. Zhang and K. Cheng, *ACS Nano*, 2017, **11**, 9738–9749.
- 90 J. Tang, T. Su, K. Huang, P. U. Dinh, Z. Wang, A. Vandergriff, M. T. Hensley, J. Cores, T. Allen, T. Li, E. Sproul, E. Mihalko, L. J. Lobo, L. Ruterbories, A. Lynch, A. Brown, T. G. Caranasos, D. Shen, G. A. Stouffer, Z. Gu, J. Zhang and K. Cheng, *Nat. Biomed. Eng.*, 2018, **2**, 17–26.
- 91 A. C. Vandergriff, T. M. Hensley, E. T. Henry, D. Shen, S. Anthony, J. Zhang and K. Cheng, *Biomaterials*, 2014, **35**, 8528–8539.
- 92 Z. Li, D. Shen, S. Hu, T. Su, K. Huang, F. Liu, L. Hou and K. Cheng, *ACS Nano*, 2018, **12**, 12193–12200.
- 93 D. T. Rigar and P. A. Silver, *Nat. Rev. Microbiol.*, 2018, **16**, 214–225.
- 94 Z. Geng, Z. Cao, R. Liu, K. Liu, J. Liu and W. Tan, *Nat. Commun.*, 2021, **12**, 6584.
- 95 J. Liu, W. Li, Y. Wang, Y. Ding, A. Lee and Q. Hu, *Nano Today*, 2021, **41**, 101291.
- 96 A. M. Nash, M. I. Jarvis, S. Aghlara-Fotovvat, S. Mukherjee, A. Hernandez, A. D. Hecht, P. D. Rios, S. Ghani, I. Joshi, D. Isa, Y. Cui, S. Nouraein, J. Z. Lee, C. Xu, D. Y. Zhang, R. A. Sheth, W. Peng, J. Oberholzer, O. A. Igoshin, A. A. Jazaeri and O. Veiseh, *Sci. Adv.*, 2022, **8**, eabm1032.
- 97 S. Bose, L. R. Volpatti, D. Thiono, V. Yesilyurt, C. McGladrigan, Y. Tang, A. Facklam, A. Wang, S. Jhunjunwala, O. Veiseh, J. Hollister-Lock, C. Bhattacharya, G. C. Weir, D. L. Greiner, R. Langer and D. G. Anderson, *Nat. Biomed. Eng.*, 2020, **4**, 814–826.
- 98 A. J. Vegas, O. Veiseh, M. Gurtler, J. R. Millman, F. W. Pagliuca, A. R. Bader, J. C. Doloff, J. Li, M. Chen, K. Olejnik, H. H. Tam, S. Jhunjunwala, E. Langan, S. Aresta-Dasilva, S. Gandham, J. J. McGarrigle, M. A. Bochenek, J. Hollister-Lock, J. Oberholzer, D. L. Greiner, G. C. Weir, D. A. Melton, R. Langer and D. G. Anderson, *Nat. Med.*, 2016, **22**, 306–311.
- 99 M. A. Bochenek, O. Veiseh, A. J. Vegas, J. J. McGarrigle, M. Qi, E. Marchese, M. Omami, J. C. Doloff, J. Mendoza-Elias, M. Nourmohammadzadeh, A. Khan, C. C. Yeh, Y. Xing, D. Isa, S. Ghani, J. Li, C. Landry, A. R. Bader, K. Olejnik, M. Chen, J. Hollister-Lock, Y. Wang, D. L. Greiner, G. C. Weir, B. L. Strand, A. M.-A. Rokstad, I. Lacik, R. Langer, D. G. Anderson and J. Oberholzer, *Nat. Biomed. Eng.*, 2018, **2**, 810–821.
- 100 X. Wang, K. G. Maxwell, K. Wang, D. T. Bowers, J. A. Flanders, W. Liu, L. H. Wang, Q. Liu, C. Liu, A. Naji, Y. Wang, B. Wang, J. Chen, A. U. Ernst, J. M. Melero-Martin, J. R. Millman and M. Ma, *Sci. Transl. Med.*, 2021, **13**, eabb4601.
- 101 J. Yu, Y. Zhang, Y. Ye, R. DiSanto, W. Sun, D. Ranson, F. S. Ligler, J. B. Buse and Z. Gu, *Proc. Natl. Acad. Sci. U. S. A.*, 2015, **112**, 8260–8265.
- 102 Y. Ye, J. Yu, C. Wang, N. Y. Nguyen, G. M. Walker, J. B. Buse and Z. Gu, *Adv. Mater.*, 2016, **28**, 3115–3121.